

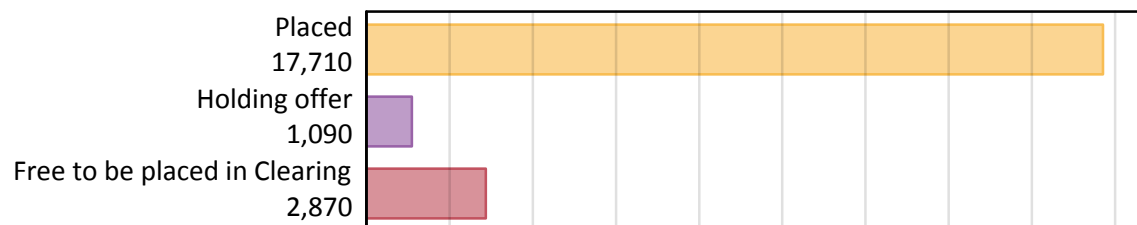
Daily Clearing Analysis: Overview

Analysis at 00:05 on Thursday 22 August 2019 (7 days after A level results day)

A.1 Applicants by type and status from Wales, 2019 cycle

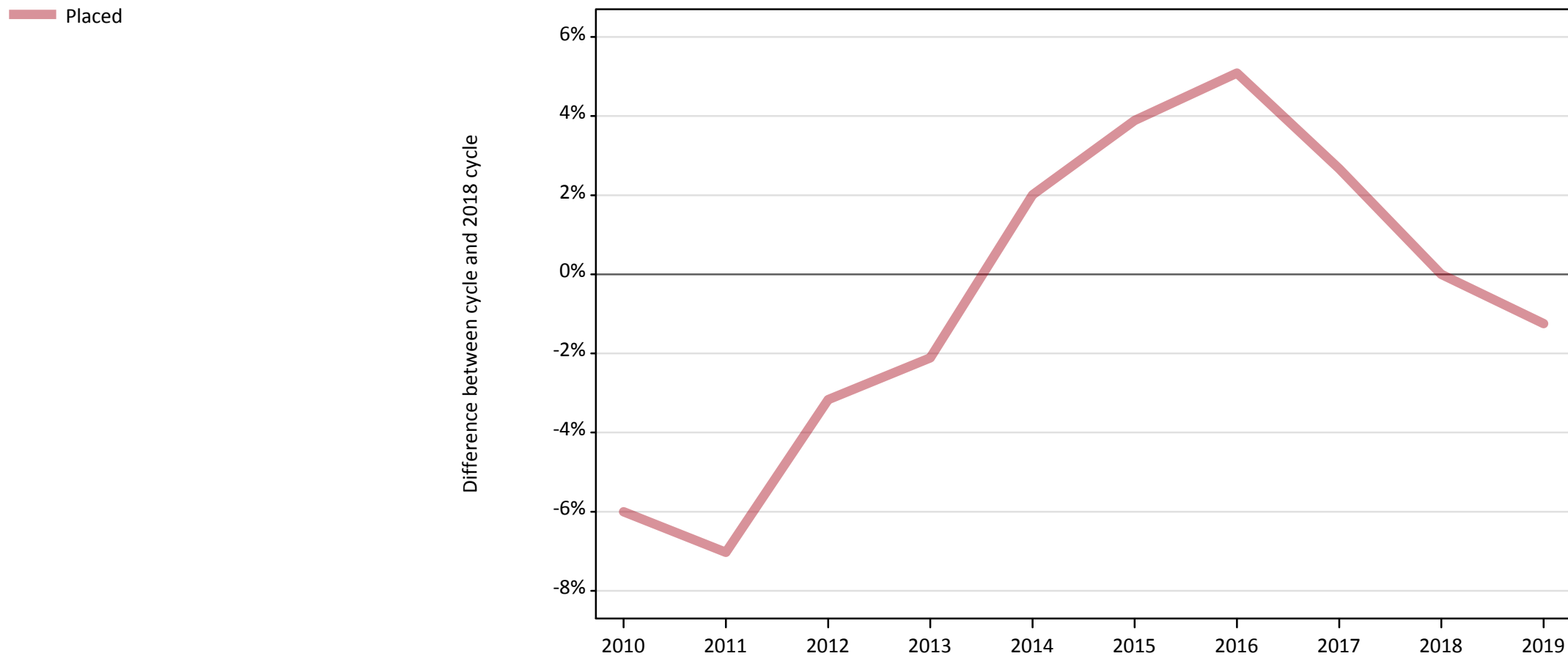
Applicant type	Status	2019
Main scheme	Placed (Clearing)	1,110
	Placed (Adjustment)	10
	Placed (Firm)	14,910
	Placed (Insurance)	800
	Placed (Other)	430
	Holding offer	1,090
	Free to be placed in Clearing	2,870
Direct to Clearing	Placed (Direct to Clearing)	440
	Other (Direct to Clearing)	300
All applicants	Placed	17,710

A.2 Summary of applicants who are placed, holding offers or free to be placed in Clearing (Wales)



A.3 All placed applicants from Wales: 7 days after A level results day

All placed applicants: difference between cycle and 2018 cycle



Note: The percentage change is not plotted in the above chart for groups with fewer than 30 placed applicants in any one cycle.

A.4 All placed applicants from Wales: 7 days after A level results day

All placed applicants: applicants at 7 days after A level results day

Applicant type	Status	2010	2011	2012	2013	2014	2015	2016	2017	2018	2019
All applicants	Placed	16,860	16,670	17,360	17,550	18,290	18,630	18,840	18,410	17,930	17,710

A.5 All placed applicants from Wales: 7 days after A level results day

All placed applicants: difference between cycle and 2018 cycle

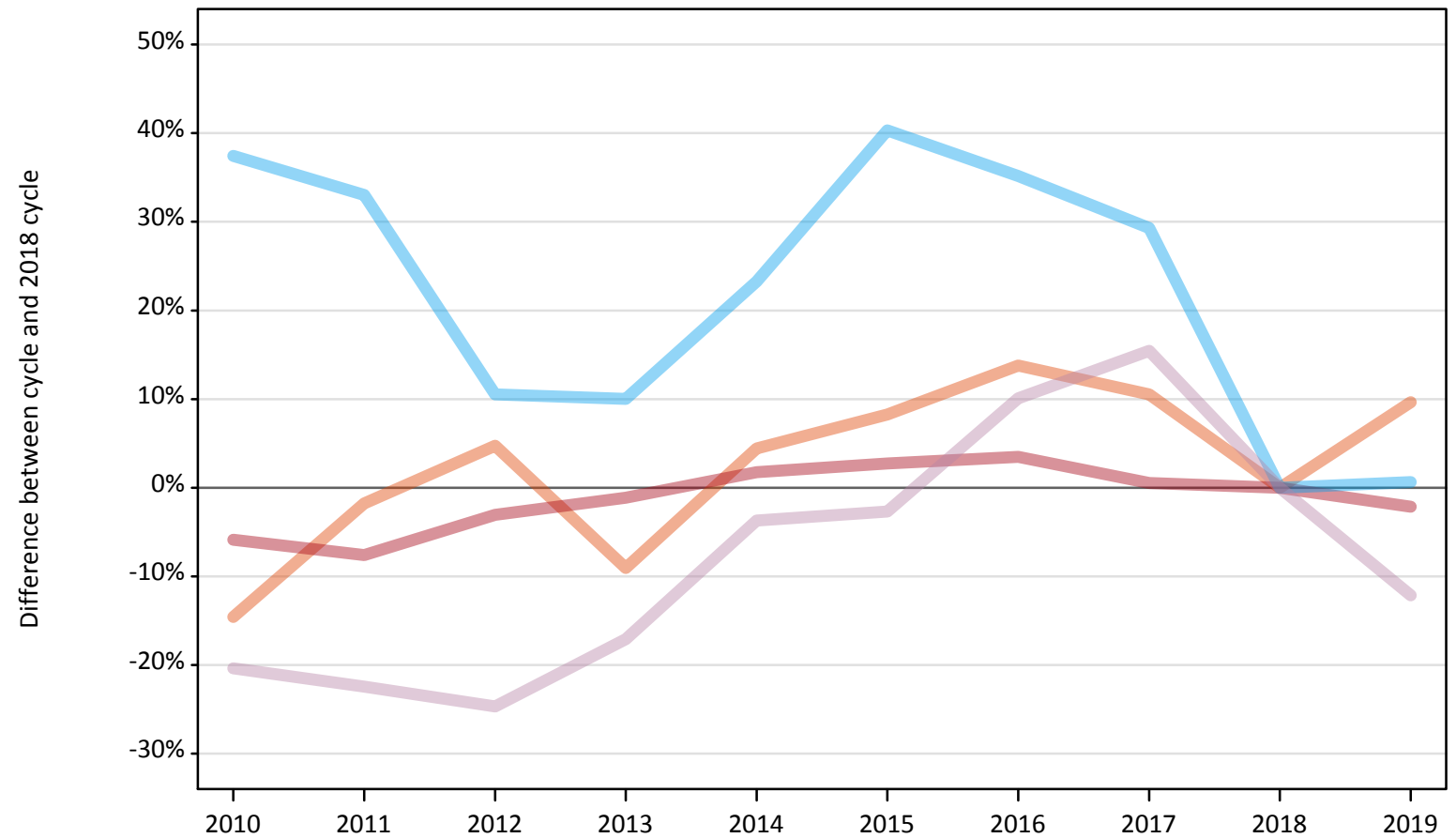
Applicant type	Status	2010	2011	2012	2013	2014	2015	2016	2017	2018	2019
All applicants	Placed	-6%	-7%	-3%	-2%	2%	4%	5%	3%	0%	-1%

Note: The percentage change is not recorded in the above table for groups with fewer than 10 placed applicants in that cycle or in the 2018 cycle.

A.6 Placed main scheme applicants from Wales: 7 days after A level results day

All Main scheme placed routes (excluding Adjustment): difference between cycle and 2018 cycle

- Placed (Clearing)
- Placed (Firm)
- Placed (Insurance)
- Placed (Other)



Note: The percentage change is not plotted in the above chart for groups with fewer than 30 placed applicants in any one cycle.

A.7 Placed main scheme applicants from Wales: 7 days after A level results day

All Main scheme placed routes (excluding Adjustment): applicants at 7 days after A level results day

Applicant type	Status	2010	2011	2012	2013	2014	2015	2016	2017	2018	2019
Main scheme	Placed (Clearing)	870	1,000	1,060	920	1,060	1,100	1,160	1,120	1,020	1,110
	Placed (Firm)	14,340	14,080	14,770	15,060	15,500	15,650	15,770	15,320	15,240	14,910
	Placed (Insurance)	1,100	1,060	880	880	990	1,120	1,080	1,030	800	800
	Placed (Other)	390	380	370	400	470	470	540	560	490	430

A.8 Placed main scheme applicants from Wales: 7 days after A level results day

All Main scheme placed routes (excluding Adjustment): difference between cycle and 2018 cycle

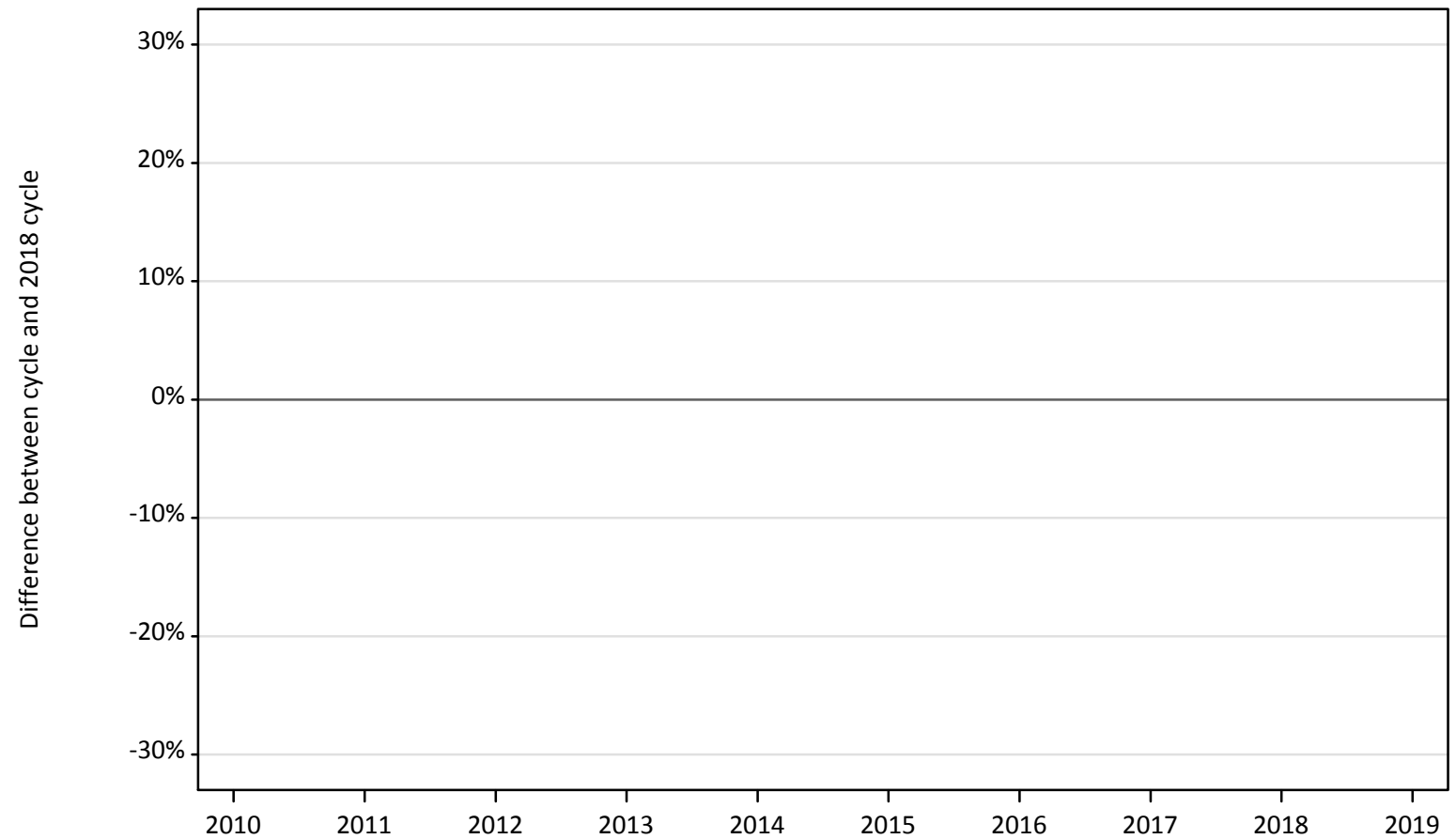
Applicant type	Status	2010	2011	2012	2013	2014	2015	2016	2017	2018	2019
Main scheme	Placed (Clearing)	-15%	-2%	5%	-9%	4%	8%	14%	11%	0%	10%
	Placed (Firm)	-6%	-8%	-3%	-1%	2%	3%	3%	1%	0%	-2%
	Placed (Insurance)	37%	33%	11%	10%	23%	40%	35%	29%	0%	1%
	Placed (Other)	-20%	-22%	-25%	-17%	-4%	-3%	10%	15%	0%	-12%

Note: The percentage change is not recorded in the above table for groups with fewer than 10 placed applicants in that cycle or in the 2018 cycle.

A.9 Main scheme applicants placed through adjustment: 7 days after A level results day

Placed through adjustment: difference between cycle and 2018 cycle

Placed (Adjustment)



Note: The percentage change is not plotted in the above chart for groups with fewer than 30 placed applicants in any one cycle.

A.10 Main scheme applicants placed through adjustment: 7 days after A level results day

Placed through adjustment: applicants at 7 days after A level results day

Applicant type	Status	2010	2011	2012	2013	2014	2015	2016	2017	2018	2019
Main scheme	Placed (Adjustment)	10	10	30	30	30	30	20	30	30	10

A.11 Main scheme applicants placed through adjustment: 7 days after A level results day

Placed through adjustment: difference between cycle and 2018 cycle

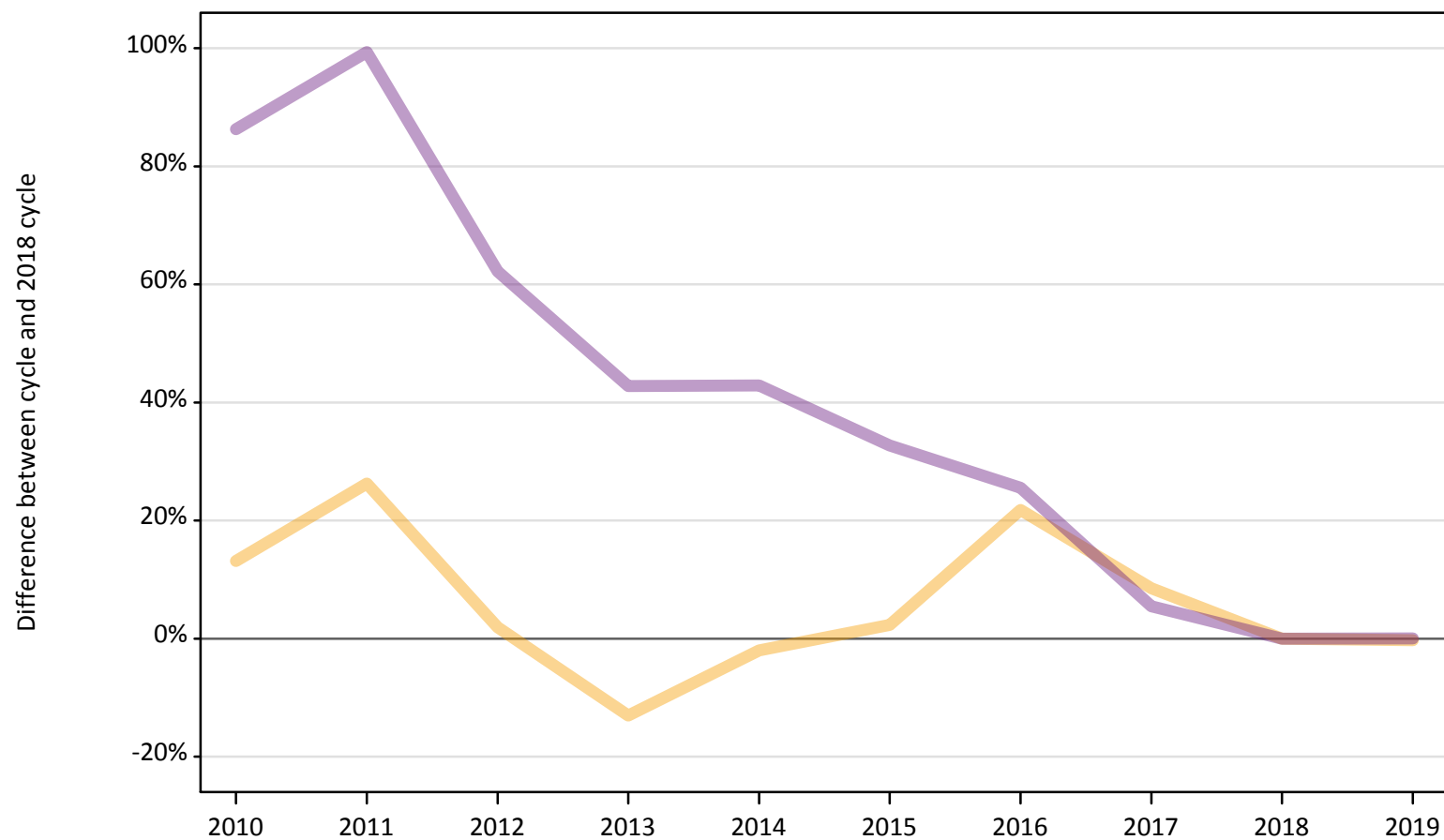
Applicant type	Status	2010	2011	2012	2013	2014	2015	2016	2017	2018	2019
Main scheme	Placed (Adjustment)	-58%	-70%	-12%	-18%	-3%	-15%	-39%	0%	0%	-61%

Note: The percentage change is not recorded in the above table for groups with fewer than 10 placed applicants in that cycle or in the 2018 cycle.

A.12 Main scheme applicants not currently placed from Wales: 7 days after A level results day

Applicants in unplaced states: difference between cycle and 2018 cycle

— Holding offer
— Free to be placed in Clearing



Note: The percentage change is not plotted in the above chart for groups with fewer than 30 unplaced applicants in any one cycle.

A.13 Main scheme applicants not currently placed from Wales: 7 days after A level results day

Applicants in unplaced states: applicants at 7 days after A level results day

Applicant type	Status	2010	2011	2012	2013	2014	2015	2016	2017	2018	2019
Main scheme	Holding offer	1,230	1,380	1,110	950	1,070	1,110	1,330	1,180	1,090	1,090
	Free to be placed in Clearing	5,340	5,720	4,650	4,090	4,100	3,810	3,600	3,020	2,870	2,870

A.14 Main scheme applicants not currently placed from Wales: 7 days after A level results day

Applicants in unplaced states: difference between cycle and 2018 cycle

Applicant type	Status	2010	2011	2012	2013	2014	2015	2016	2017	2018	2019
Main scheme	Holding offer	13%	26%	2%	-13%	-2%	2%	22%	9%	0%	-0%
	Free to be placed in Clearing	86%	99%	62%	43%	43%	33%	26%	5%	0%	0%

Note: The percentage change is not recorded in the above table for groups with fewer than 10 unplaced applicants in that cycle or in the 2018 cycle.

A.15 Direct to Clearing applicants from Wales: 7 days after A level results day

Direct to Clearing: difference between cycle and 2018 cycle



Note: The percentage change is not plotted in the above chart for groups with fewer than 30 placed applicants in any one cycle.

A.16 Direct to Clearing applicants from Wales: 7 days after A level results day

Direct to Clearing 7 days after A level results day

Applicant type	Status	2010	2011	2012	2013	2014	2015	2016	2017	2018	2019
Direct to Clearing	Placed (Direct to Clearing)	150	140	250	260	240	260	290	340	360	440
	Other (Direct to Clearing)	250	230	230	230	270	290	240	320	300	300

A.17 Direct to Clearing applicants from Wales: 7 days after A level results day

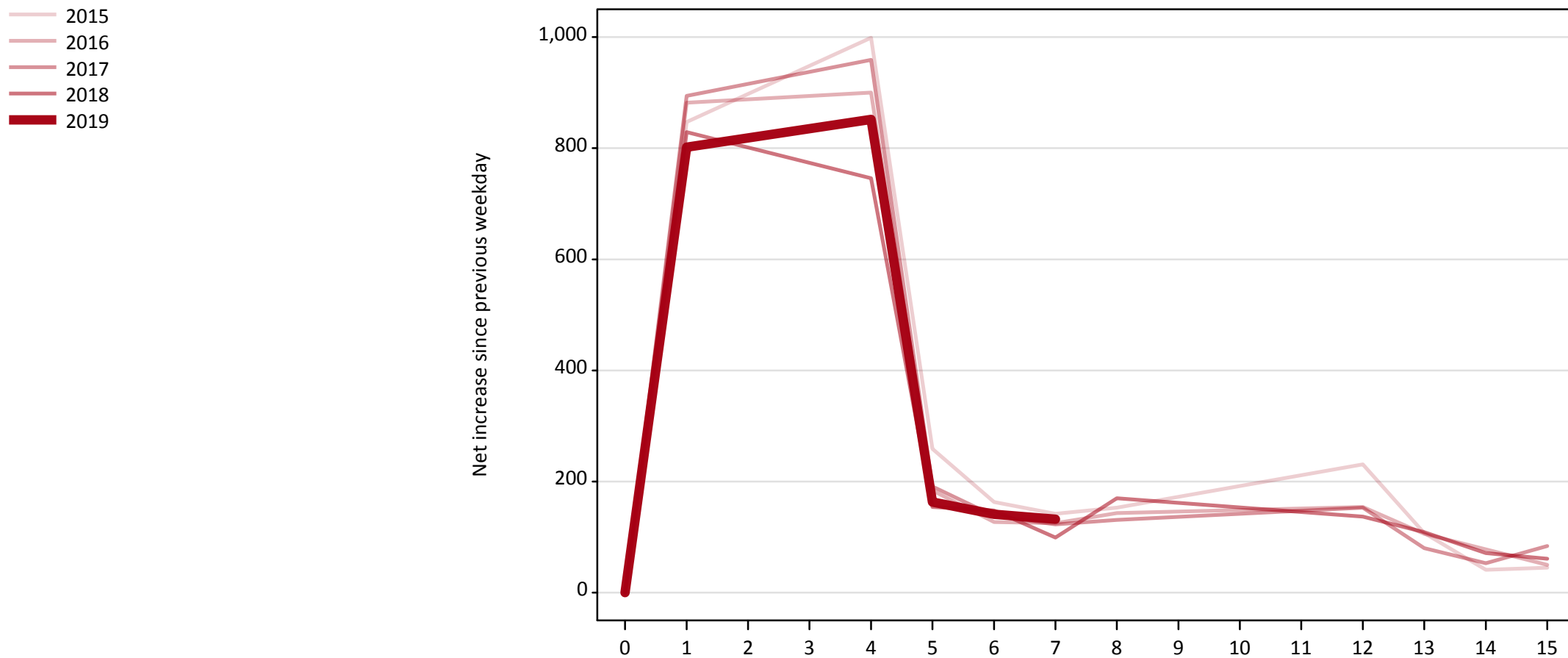
Direct to Clearing: difference between cycle and 2018 cycle

Applicant type	Status	2010	2011	2012	2013	2014	2015	2016	2017	2018	2019
Direct to Clearing	Placed (Direct to Clearing)	-59%	-60%	-30%	-29%	-33%	-30%	-21%	-5%	0%	22%
	Other (Direct to Clearing)	-17%	-22%	-23%	-22%	-10%	-4%	-18%	7%	0%	-1%

Note: The percentage change is not recorded in the above table for groups with fewer than 10 placed applicants in that cycle or in the 2018 cycle.

A.18 All Placed: Daily net change (from Wales)

Net increase since previous weekday (2019 cycle up to 7 days after A level results day)

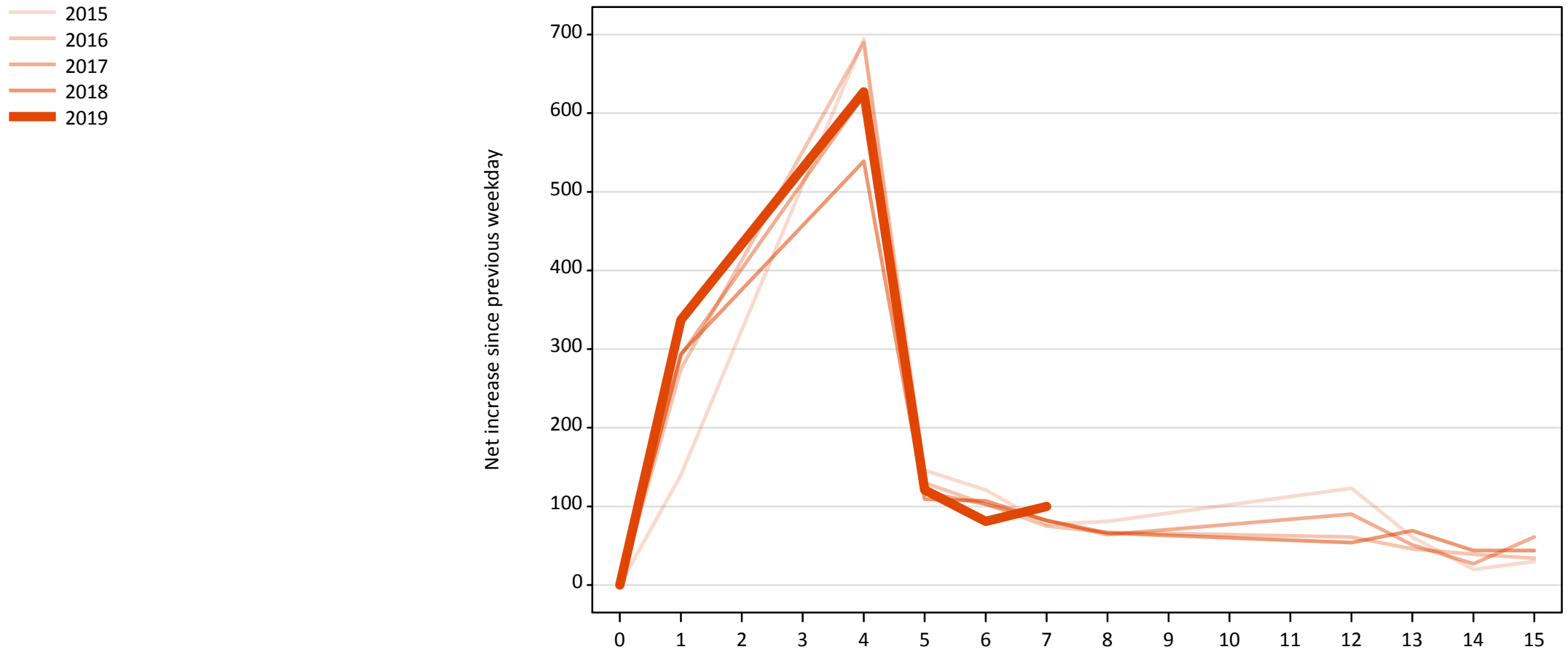


A.19 All Placed: Daily net change (from Wales)

Net increase since previous weekday (2019 cycle up to 7 days after A level results day)

Applicant status, days since A level results day		2015	2016	2017	2018	2019
All Placed	0	0	0	0	0	0
	1	850	880	890	830	800
	4	1,000	900	960	750	850
	5	260	180	190	150	160
	6	160	130	140	150	140
	7	140	130	120	100	130
	8	150	140	130	170	
	12	230	150	150	140	
	13	110	110	80	110	
	14	40	80	50	70	
	15	50	50	80	60	

A.20 Placed through Clearing only: Daily net change (from Wales)
Net increase since previous weekday (2019 cycle up to 7 days after A level results day)



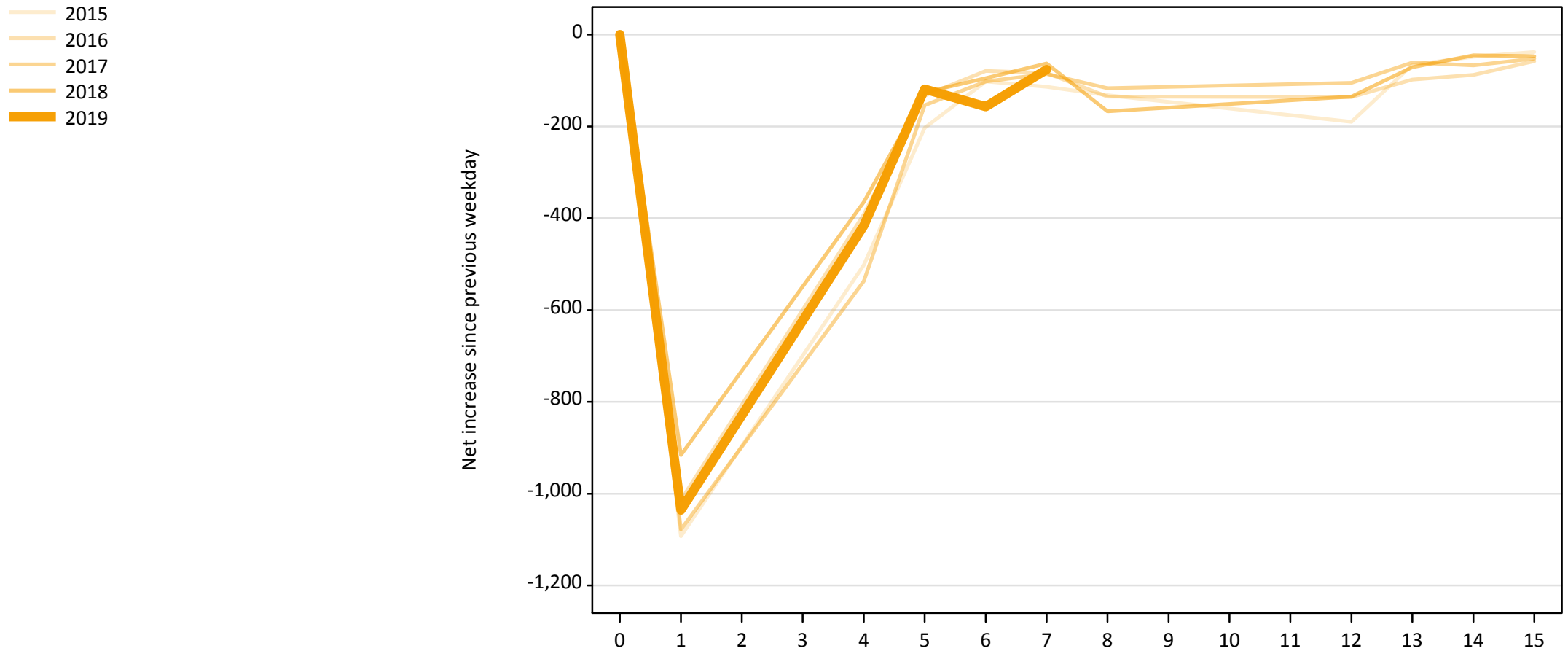
A.21 Placed through Clearing only: Daily net change (from Wales)

Net increase since previous weekday (2019 cycle up to 7 days after A level results day)

Applicant status, days since A level results day		2015	2016	2017	2018	2019
Placed through Clearing only	0	0	0	0	0	0
	1	140	280	290	290	340
	4	690	690	620	540	630
	5	150	130	120	110	120
	6	120	100	100	110	80
	7	80	80	80	80	100
	8	80	70	60	70	
	12	120	60	90	50	
	13	60	50	50	70	
	14	20	40	30	40	
	15	30	30	60	40	

A.22 Holding Offer: Daily net change (from Wales)

Net increase since previous weekday (2019 cycle up to 7 days after A level results day)



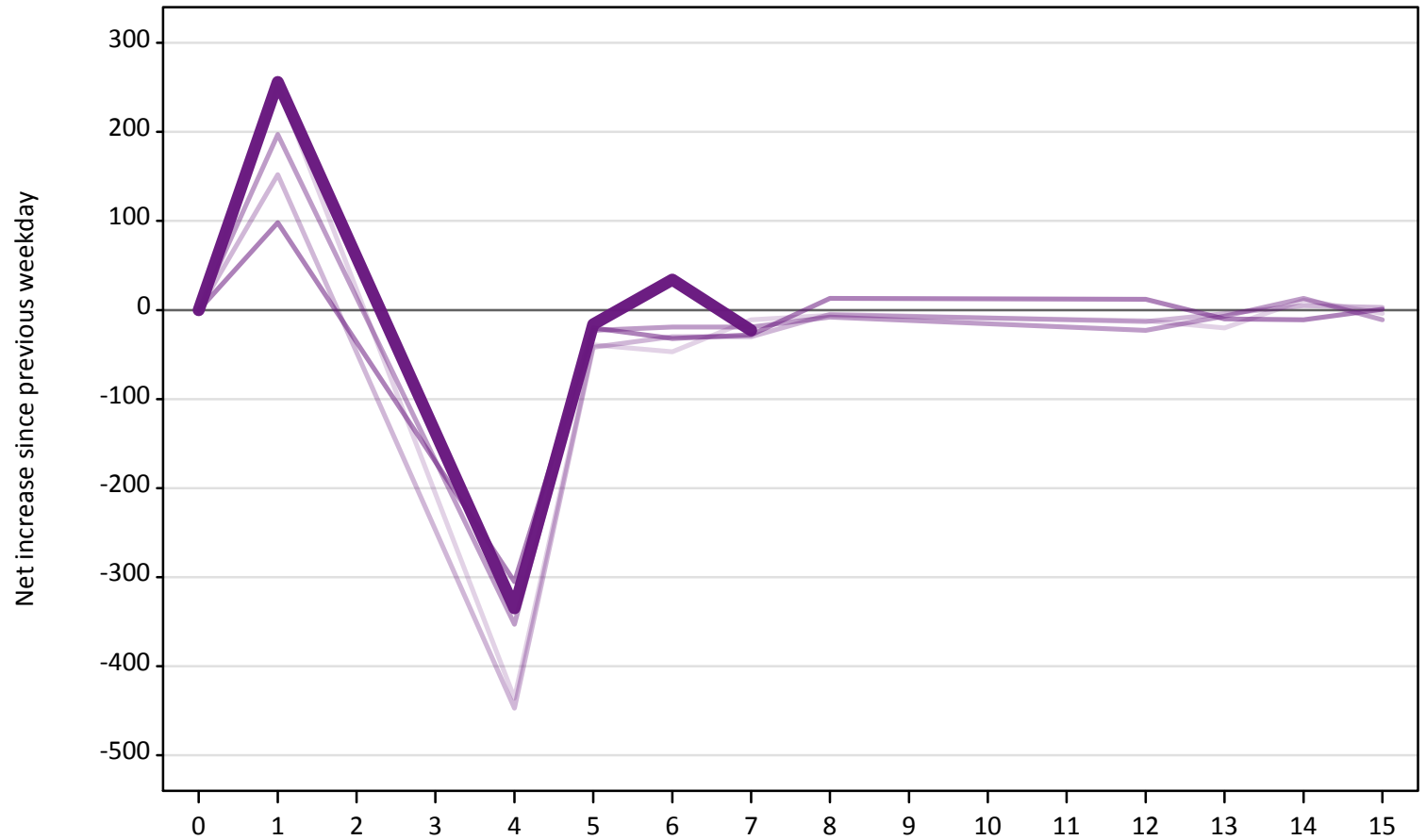
A.23 Holding Offer: Daily net change (from Wales)

Net increase since previous weekday (2019 cycle up to 7 days after A level results day)

Applicant status, days since A level results day		2015	2016	2017	2018	2019
Holding Offer	0	0	0	0	0	0
	1	-1,090	-1,010	-1,080	-920	-1,040
	4	-500	-390	-540	-370	-420
	5	-200	-130	-150	-130	-120
	6	-100	-80	-100	-100	-160
	7	-110	-80	-90	-60	-80
	8	-130	-140	-120	-170	
	12	-190	-140	-110	-140	
	13	-70	-100	-60	-70	
	14	-50	-90	-70	-50	
	15	-40	-60	-50	-50	

A.24 Free to be placed in Clearing: Daily net change (from Wales)
Net increase since previous weekday (2019 cycle up to 7 days after A level results day)

- 2015
- 2016
- 2017
- 2018
- 2019



A.25 Free to be placed in Clearing: Daily net change (from Wales)

Net increase since previous weekday (2019 cycle up to 7 days after A level results day)

Applicant status, days since A level results day		2015	2016	2017	2018	2019
Free to be placed in Clearing	0	0	0	0	0	0
	1	250	150	200	100	260
	4	-440	-450	-350	-310	-340
	5	-40	-40	-20	-20	-20
	6	-50	-30	-20	-30	30
	7	-10	-30	-20	-30	-20
	8	-10	-10	-10	10	
	12	-10	-10	-20	10	
	13	-20	0	-10	-10	
	14	10	10	10	-10	
	15	0	0	-10	0	