

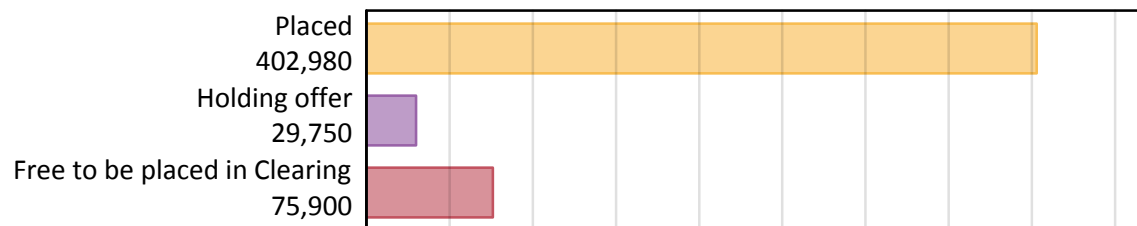
# Daily Clearing Analysis: Overview

Analysis at 00:05 on Thursday 22 August 2019 (7 days after A level results day)

## A.1 Applicants by type and status from the UK, 2019 cycle

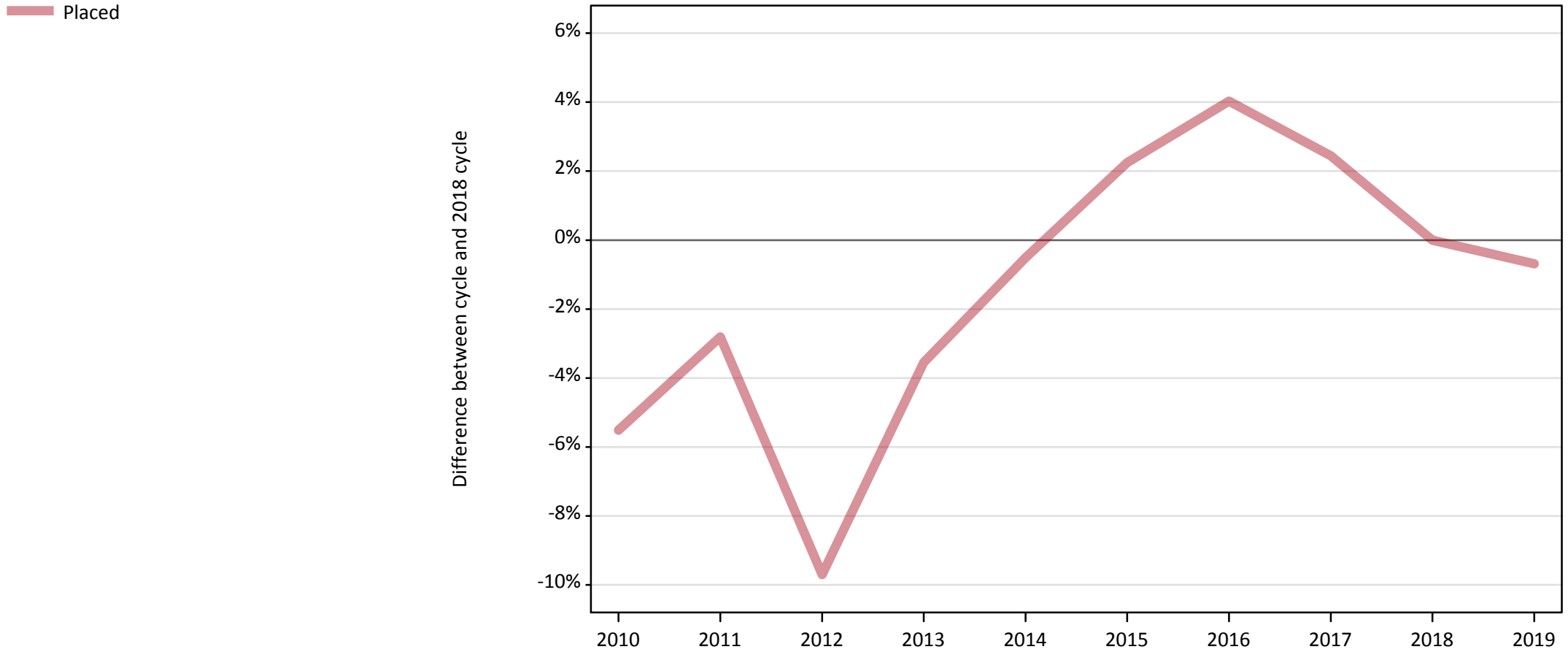
Applicant type	Status	2019
Main scheme	Placed (Clearing)	37,180
	Placed (Adjustment)	540
	Placed (Firm)	319,350
	Placed (Insurance)	27,680
	Placed (Other)	10,090
	Holding offer	29,750
	Free to be placed in Clearing	75,900
Direct to Clearing	Placed (Direct to Clearing)	8,160
	Other (Direct to Clearing)	7,550
All applicants	Placed	402,980

## A.2 Summary of applicants who are placed, holding offers or free to be placed in Clearing ( the UK )



### A.3 All placed applicants from the UK: 7 days after A level results day

All placed applicants: difference between cycle and 2018 cycle



Note: The percentage change is not plotted in the above chart for groups with fewer than 30 placed applicants in any one cycle.

#### A.4 All placed applicants from the UK: 7 days after A level results day

All placed applicants: applicants at 7 days after A level results day

Applicant type	Status	2010	2011	2012	2013	2014	2015	2016	2017	2018	2019
All applicants	Placed	383,410	394,370	366,410	391,380	403,690	414,900	422,130	415,680	405,770	402,980

#### A.5 All placed applicants from the UK: 7 days after A level results day

All placed applicants: difference between cycle and 2018 cycle

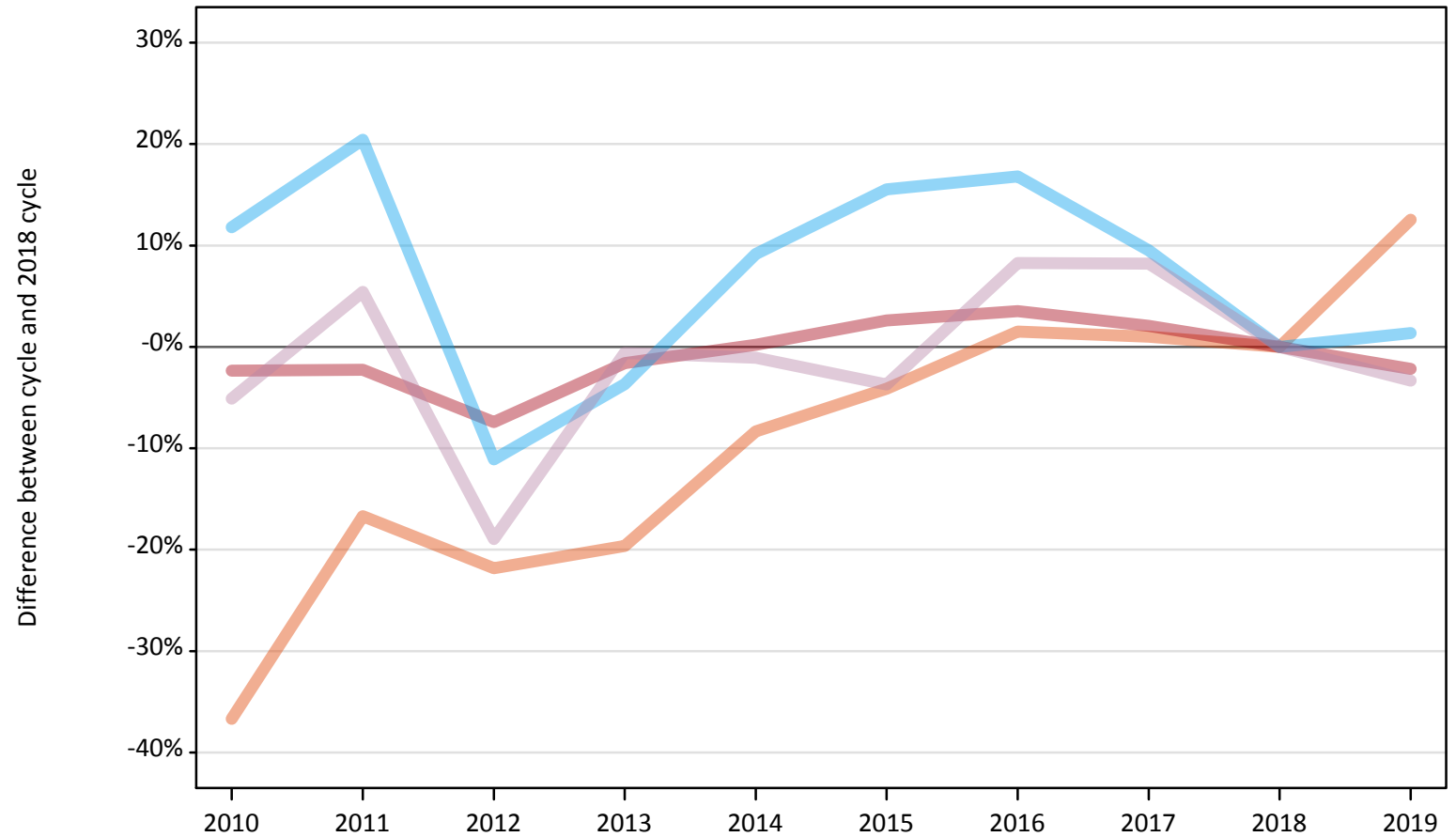
Applicant type	Status	2010	2011	2012	2013	2014	2015	2016	2017	2018	2019
All applicants	Placed	-6%	-3%	-10%	-4%	-1%	2%	4%	2%	0%	-1%

Note: The percentage change is not recorded in the above table for groups with fewer than 10 placed applicants in that cycle or in the 2018 cycle.

## A.6 Placed main scheme applicants from the UK: 7 days after A level results day

All Main scheme placed routes (excluding Adjustment): difference between cycle and 2018 cycle

- Placed (Clearing)
- Placed (Firm)
- Placed (Insurance)
- Placed (Other)



Note: The percentage change is not plotted in the above chart for groups with fewer than 30 placed applicants in any one cycle.

### A.7 Placed main scheme applicants from the UK: 7 days after A level results day

All Main scheme placed routes (excluding Adjustment): applicants at 7 days after A level results day

Applicant type	Status	2010	2011	2012	2013	2014	2015	2016	2017	2018	2019
Main scheme	Placed (Clearing)	20,910	27,520	25,830	26,550	30,280	31,670	33,530	33,370	33,040	37,180
	Placed (Firm)	318,790	319,040	302,200	321,220	327,050	334,960	337,910	333,190	326,410	319,350
	Placed (Insurance)	30,530	32,890	24,280	26,310	29,810	31,550	31,900	29,900	27,310	27,680
	Placed (Other)	9,910	11,000	8,460	10,380	10,330	10,050	11,300	11,300	10,440	10,090

### A.8 Placed main scheme applicants from the UK: 7 days after A level results day

All Main scheme placed routes (excluding Adjustment): difference between cycle and 2018 cycle

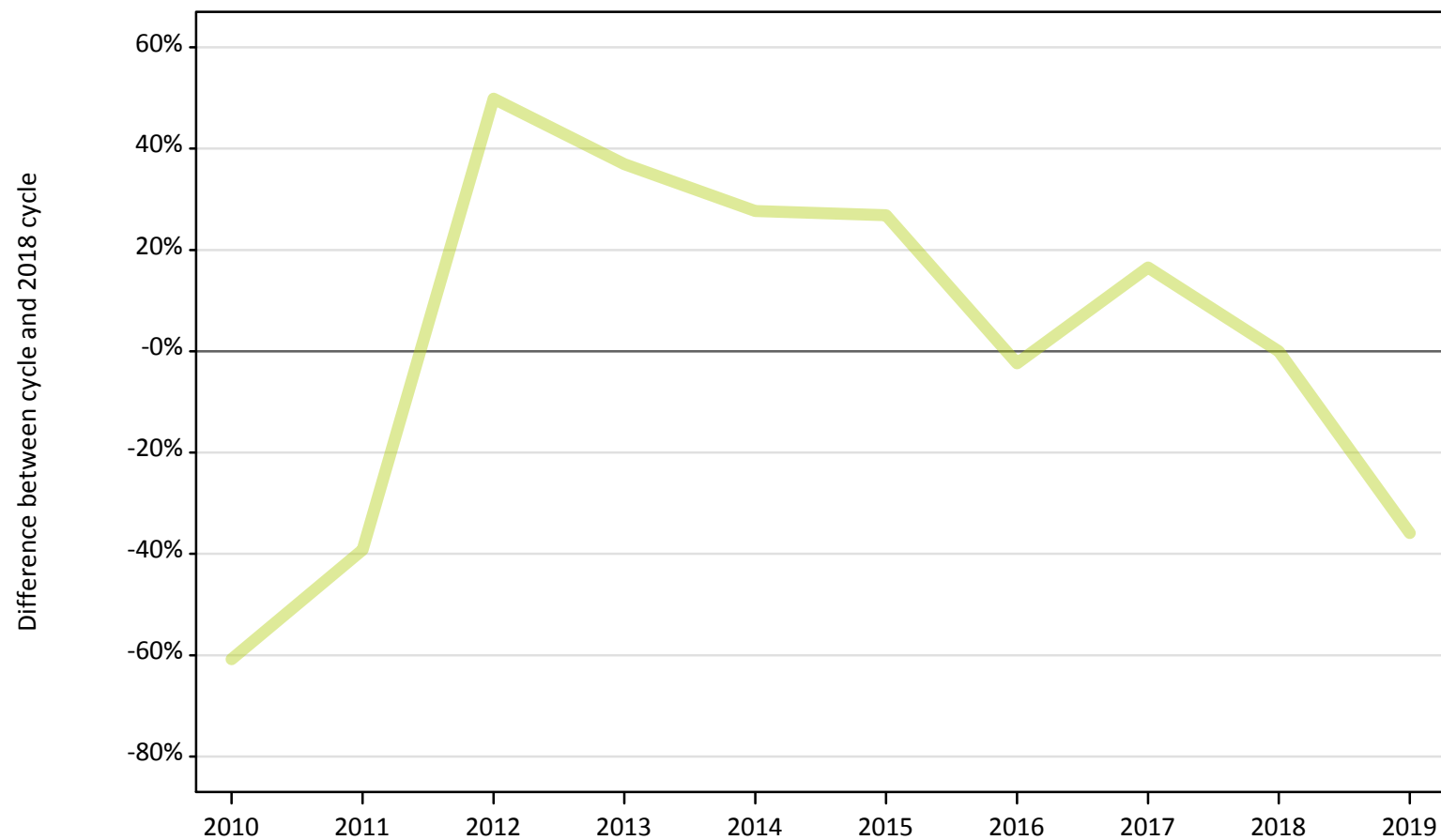
Applicant type	Status	2010	2011	2012	2013	2014	2015	2016	2017	2018	2019
Main scheme	Placed (Clearing)	-37%	-17%	-22%	-20%	-8%	-4%	1%	1%	0%	13%
	Placed (Firm)	-2%	-2%	-7%	-2%	0%	3%	4%	2%	0%	-2%
	Placed (Insurance)	12%	20%	-11%	-4%	9%	16%	17%	10%	0%	1%
	Placed (Other)	-5%	5%	-19%	-1%	-1%	-4%	8%	8%	0%	-3%

Note: The percentage change is not recorded in the above table for groups with fewer than 10 placed applicants in that cycle or in the 2018 cycle.

## A.9 Main scheme applicants placed through adjustment: 7 days after A level results day

Placed through adjustment: difference between cycle and 2018 cycle

Placed (Adjustment)



Note: The percentage change is not plotted in the above chart for groups with fewer than 30 placed applicants in any one cycle.

### A.10 Main scheme applicants placed through adjustment: 7 days after A level results day

Placed through adjustment: applicants at 7 days after A level results day

Applicant type	Status	2010	2011	2012	2013	2014	2015	2016	2017	2018	2019
Main scheme	Placed (Adjustment)	330	510	1,250	1,140	1,070	1,060	810	970	830	540

### A.11 Main scheme applicants placed through adjustment: 7 days after A level results day

Placed through adjustment: difference between cycle and 2018 cycle

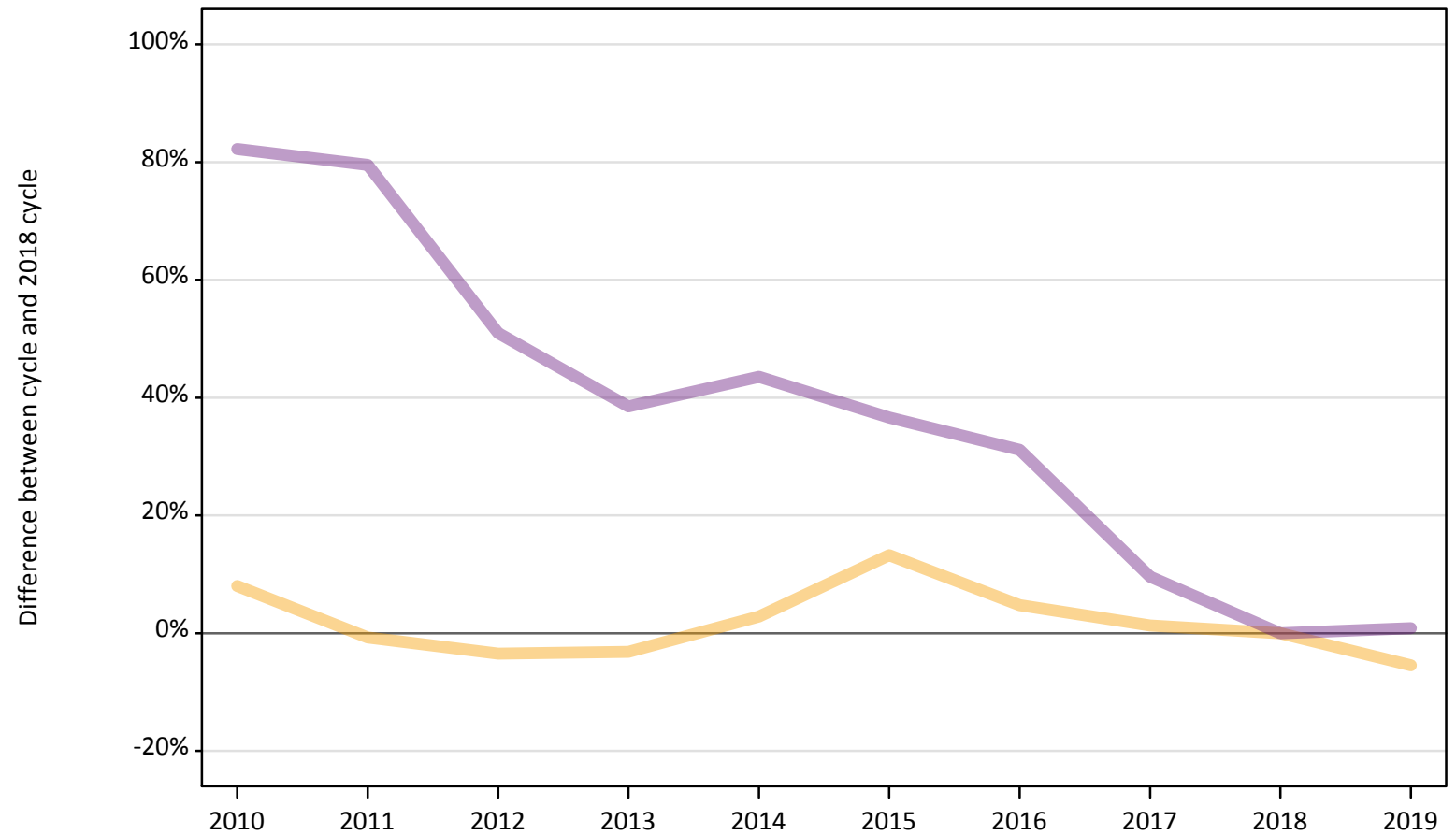
Applicant type	Status	2010	2011	2012	2013	2014	2015	2016	2017	2018	2019
Main scheme	Placed (Adjustment)	-61%	-39%	50%	37%	28%	27%	-2%	17%	0%	-36%

Note: The percentage change is not recorded in the above table for groups with fewer than 10 placed applicants in that cycle or in the 2018 cycle.

## A.12 Main scheme applicants not currently placed from the UK: 7 days after A level results day

Applicants in unplaced states: difference between cycle and 2018 cycle

— Holding offer  
— Free to be placed in Clearing



Note: The percentage change is not plotted in the above chart for groups with fewer than 30 unplaced applicants in any one cycle.



### A.13 Main scheme applicants not currently placed from the UK: 7 days after A level results day

Applicants in unplaced states: applicants at 7 days after A level results day

Applicant type	Status	2010	2011	2012	2013	2014	2015	2016	2017	2018	2019
Main scheme	Holding offer	33,970	31,230	30,370	30,460	32,350	35,620	32,950	31,870	31,460	29,750
	Free to be placed in Clearing	137,150	135,140	113,620	104,240	108,030	102,850	98,720	82,470	75,270	75,900

### A.14 Main scheme applicants not currently placed from the UK: 7 days after A level results day

Applicants in unplaced states: difference between cycle and 2018 cycle

Applicant type	Status	2010	2011	2012	2013	2014	2015	2016	2017	2018	2019
Main scheme	Holding offer	8%	-1%	-3%	-3%	3%	13%	5%	1%	0%	-5%
	Free to be placed in Clearing	82%	80%	51%	38%	44%	37%	31%	10%	0%	1%

Note: The percentage change is not recorded in the above table for groups with fewer than 10 unplaced applicants in that cycle or in the 2018 cycle.

### A.15 Direct to Clearing applicants from the UK: 7 days after A level results day

Direct to Clearing: difference between cycle and 2018 cycle



Note: The percentage change is not plotted in the above chart for groups with fewer than 30 placed applicants in any one cycle.

### A.16 Direct to Clearing applicants from the UK: 7 days after A level results day

Direct to Clearing 7 days after A level results day

Applicant type	Status	2010	2011	2012	2013	2014	2015	2016	2017	2018	2019
Direct to Clearing	Placed (Direct to Clearing)	2,940	3,410	4,400	5,790	5,160	5,600	6,680	6,940	7,750	8,160
	Other (Direct to Clearing)	7,820	7,540	6,330	7,170	6,340	7,080	6,720	6,920	6,610	7,550

### A.17 Direct to Clearing applicants from the UK: 7 days after A level results day

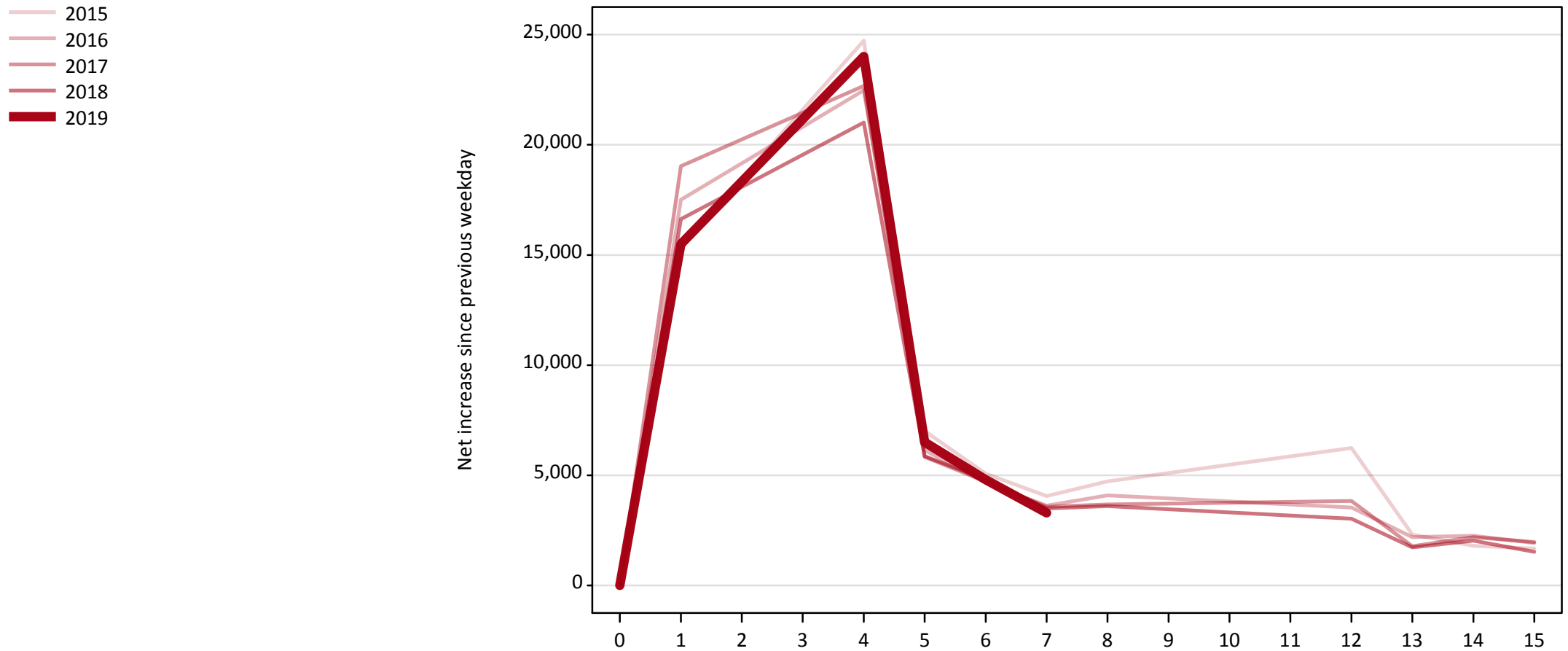
Direct to Clearing: difference between cycle and 2018 cycle

Applicant type	Status	2010	2011	2012	2013	2014	2015	2016	2017	2018	2019
Direct to Clearing	Placed (Direct to Clearing)	-62%	-56%	-43%	-25%	-33%	-28%	-14%	-10%	0%	5%
	Other (Direct to Clearing)	18%	14%	-4%	8%	-4%	7%	2%	5%	0%	14%

Note: The percentage change is not recorded in the above table for groups with fewer than 10 placed applicants in that cycle or in the 2018 cycle.

### A.18 All Placed: Daily net change (from the UK)

Net increase since previous weekday (2019 cycle up to 7 days after A level results day)

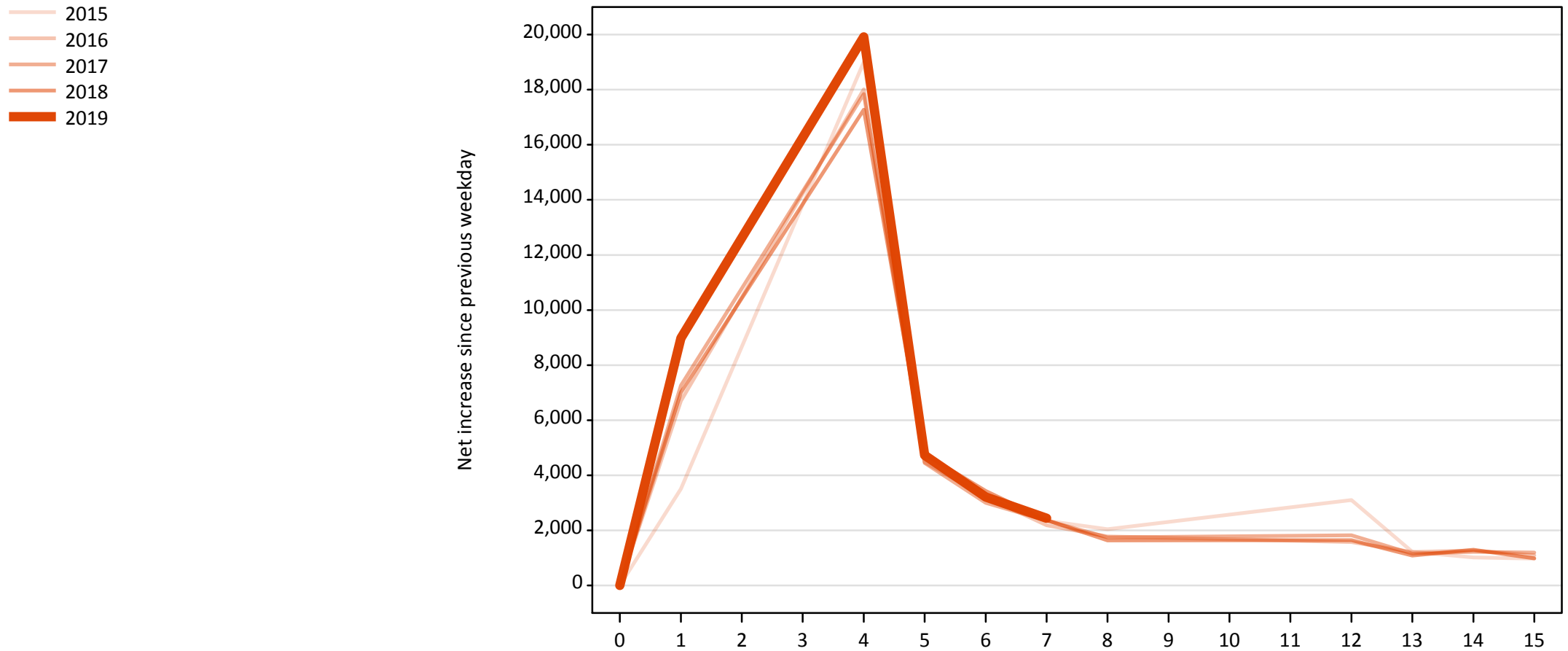


**A.19 All Placed: Daily net change (from the UK)**

Net increase since previous weekday (2019 cycle up to 7 days after A level results day)

Applicant status, days since A level results day		2015	2016	2017	2018	2019
All Placed	0	0	0	0	0	0
	1	15,350	17,510	19,030	16,620	15,490
	4	24,730	22,470	22,670	21,010	24,010
	5	7,020	6,140	5,840	5,870	6,510
	6	5,070	4,660	4,710	4,810	4,800
	7	4,060	3,630	3,570	3,500	3,300
	8	4,720	4,090	3,670	3,600	
	12	6,240	3,530	3,840	3,020	
	13	2,310	2,200	1,780	1,720	
	14	1,810	2,260	2,200	2,030	
	15	1,680	1,920	1,970	1,530	

**A.20 Placed through Clearing only: Daily net change (from the UK)**  
Net increase since previous weekday (2019 cycle up to 7 days after A level results day)

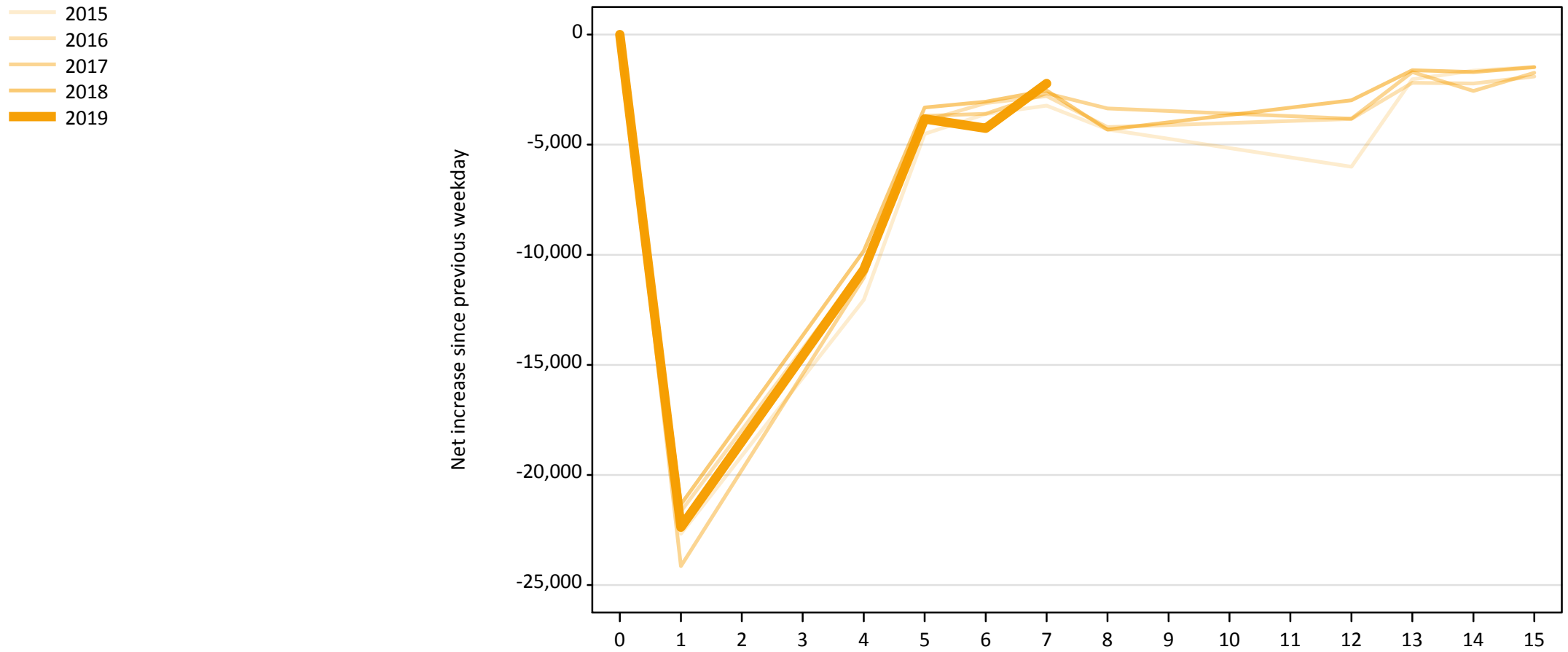


### A.21 Placed through Clearing only: Daily net change (from the UK)

Net increase since previous weekday (2019 cycle up to 7 days after A level results day)

Applicant status, days since A level results day		2015	2016	2017	2018	2019
Placed through Clearing only	0	0	0	0	0	0
	1	3,510	6,700	7,260	7,010	8,980
	4	19,000	18,010	17,840	17,270	19,910
	5	4,820	4,470	4,450	4,770	4,730
	6	3,170	3,220	3,000	3,430	3,210
	7	2,350	2,180	2,360	2,370	2,440
	8	2,040	1,780	1,740	1,640	
	12	3,100	1,570	1,820	1,640	
	13	1,220	1,210	1,150	1,080	
	14	1,020	1,270	1,220	1,300	
	15	980	1,090	1,200	980	

**A.22 Holding Offer: Daily net change (from the UK)**  
Net increase since previous weekday (2019 cycle up to 7 days after A level results day)



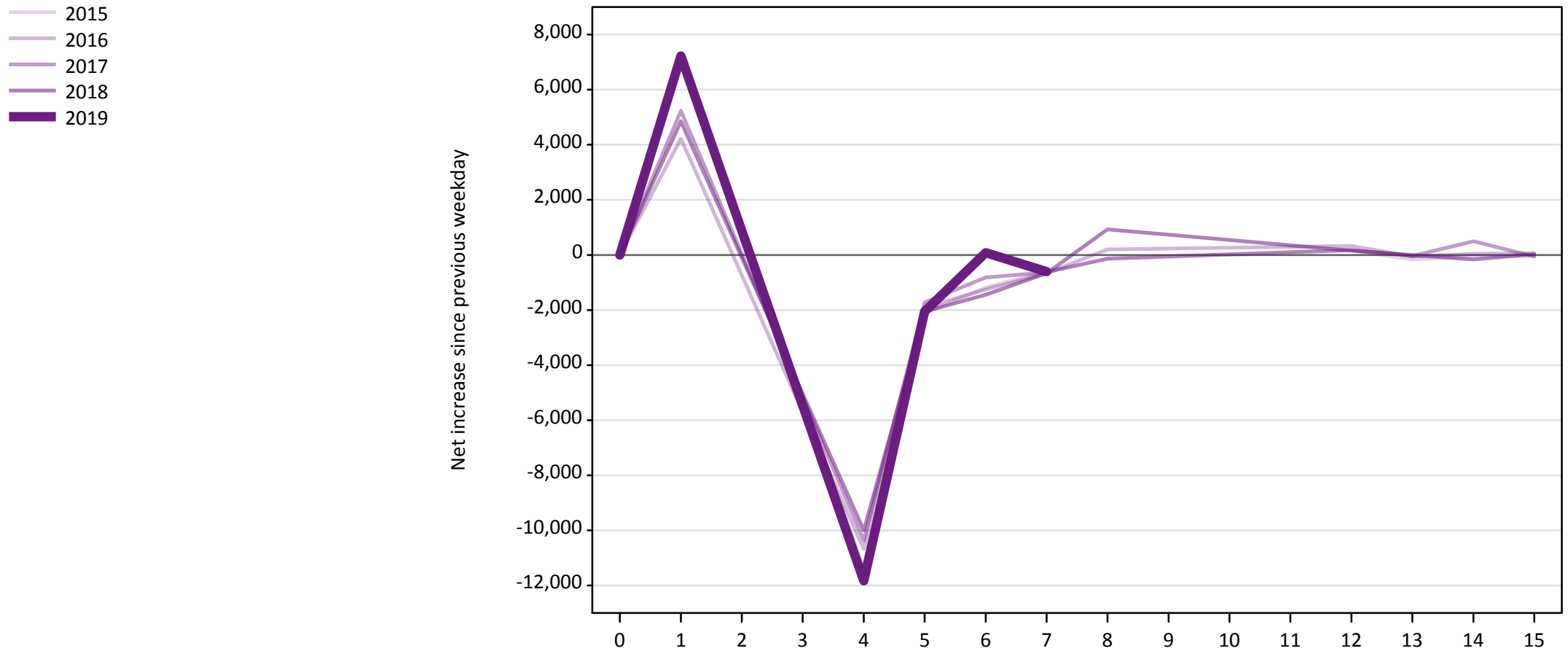


### A.23 Holding Offer: Daily net change (from the UK)

Net increase since previous weekday (2019 cycle up to 7 days after A level results day)

Applicant status, days since A level results day		2015	2016	2017	2018	2019
Holding Offer	0	0	0	0	0	0
	1	-22,670	-21,650	-24,140	-21,330	-22,370
	4	-12,050	-10,570	-11,040	-9,830	-10,670
	5	-4,510	-3,920	-3,690	-3,320	-3,840
	6	-3,610	-3,110	-3,600	-3,040	-4,250
	7	-3,230	-2,790	-2,670	-2,540	-2,220
	8	-4,310	-4,200	-3,360	-4,320	
	12	-6,000	-3,830	-3,830	-2,980	
	13	-2,030	-2,190	-1,700	-1,620	
	14	-1,640	-2,220	-2,560	-1,700	
	15	-1,470	-1,900	-1,740	-1,480	

**A.24 Free to be placed in Clearing: Daily net change (from the UK)**  
Net increase since previous weekday (2019 cycle up to 7 days after A level results day)



**A.25 Free to be placed in Clearing: Daily net change (from the UK)**

Net increase since previous weekday (2019 cycle up to 7 days after A level results day)

Applicant status, days since A level results day		2015	2016	2017	2018	2019
Free to be placed in Clearing	0	0	0	0	0	0
	1	7,260	4,220	5,230	4,850	7,220
	4	-11,400	-10,680	-10,370	-10,000	-11,830
	5	-2,100	-1,900	-1,730	-2,050	-2,060
	6	-1,180	-1,260	-820	-1,450	80
	7	-610	-660	-630	-660	-610
	8	-150	200	-130	920	
	12	150	320	190	160	
	13	-170	-50	-40	0	
	14	-50	40	500	-160	
	15	-40	60	-50	30	