

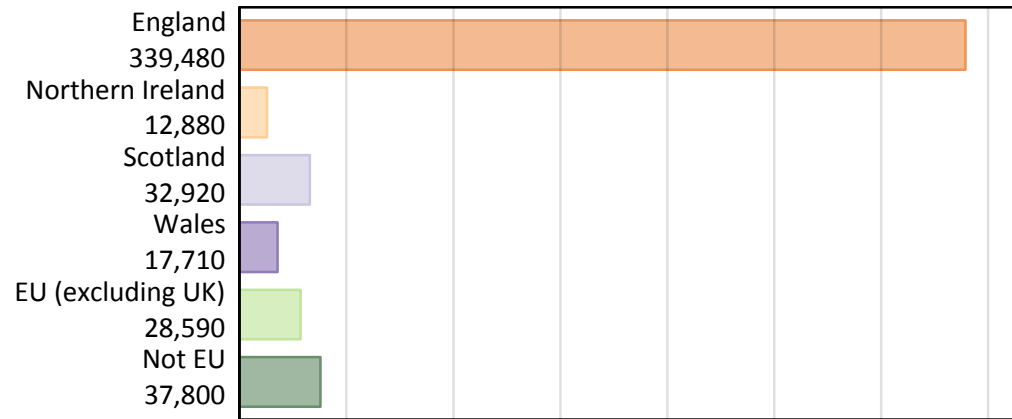
# Daily Clearing Analysis: Country

Analysis at 00:05 on Thursday 22 August 2019 (7 days after A level results day)

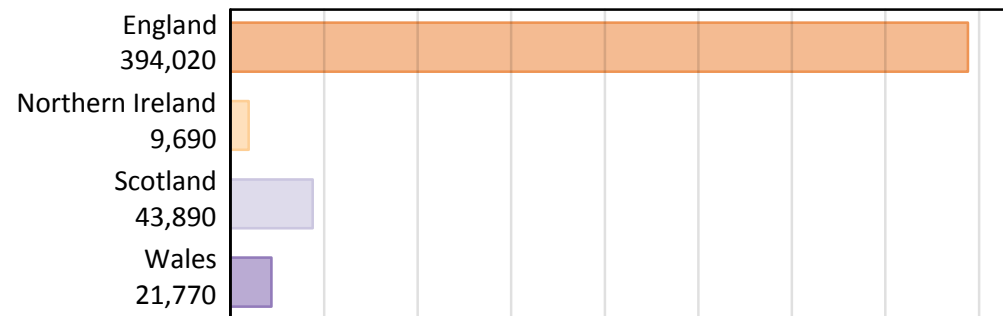
## B.1 Placed applicants by country of provider and domicile, 2019 cycle

Domicile of applicant	Country of provider				
	England	Northern Ireland	Scotland	Wales	UK
England	325,240	290	4,330	9,620	339,480
Northern Ireland	3,150	8,730	880	120	12,880
Scotland	1,460	20	31,410	40	32,920
Wales	7,660	10	130	9,910	17,710
EU (excluding UK)	23,390	410	3,840	960	28,590
Not EU	33,130	230	3,320	1,120	37,800
All	394,020	9,690	43,890	21,770	469,370

### B.2 Placed applicants by domicile group



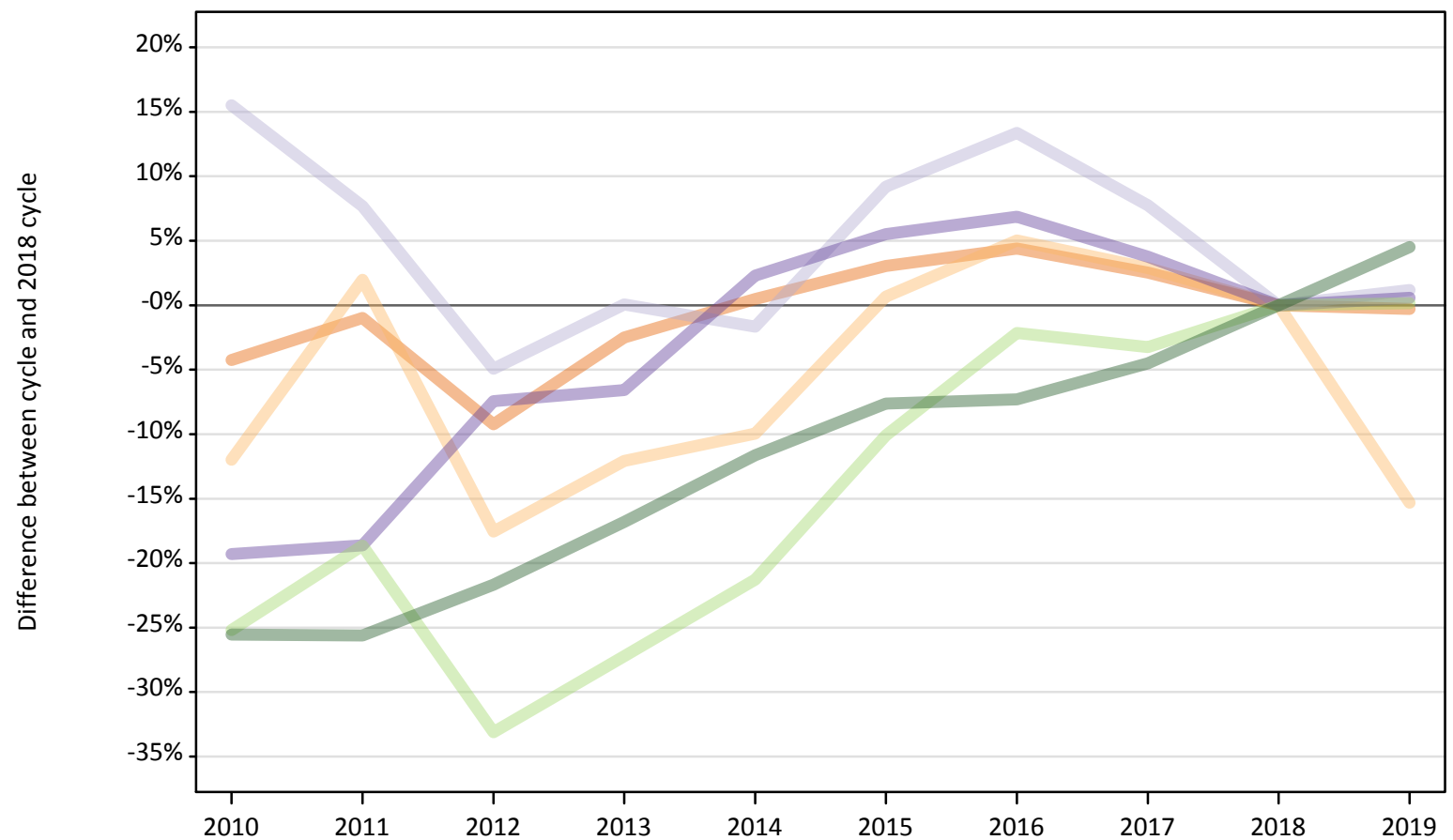
### B.3 Placed applicants by country of provider



### B.4 Placed applicants at 7 days after A level results day: providers in England

Selected applicant domiciles: difference between cycle and 2018 cycle (at 7 days after A level results day)

- England
- Northern Ireland
- Scotland
- Wales
- EU (excluding UK)
- Not EU



Note: The percentage change is not plotted in the above chart for groups with fewer than 30 placed applicants in any one cycle.

### B.5 Placed applicants at 7 days after A level results day: providers in England

Placed applicants by domicile (at 7 days after A level results day)

Domicile of applicant	2010	2011	2012	2013	2014	2015	2016	2017	2018	2019
England	312,310	322,920	296,020	318,010	327,740	336,120	340,520	334,450	326,170	325,240
Northern Ireland	3,270	3,790	3,060	3,270	3,350	3,740	3,900	3,820	3,720	3,150
Scotland	1,670	1,560	1,370	1,450	1,420	1,580	1,640	1,560	1,450	1,460
Wales	6,140	6,190	7,050	7,110	7,790	8,030	8,130	7,900	7,610	7,660
EU (excluding UK)	17,470	19,000	15,620	17,000	18,390	21,000	22,850	22,590	23,350	23,390
Not EU	23,600	23,580	24,830	26,370	28,010	29,280	29,380	30,270	31,700	33,130

### B.6 Placed applicants at 7 days after A level results day: providers in England

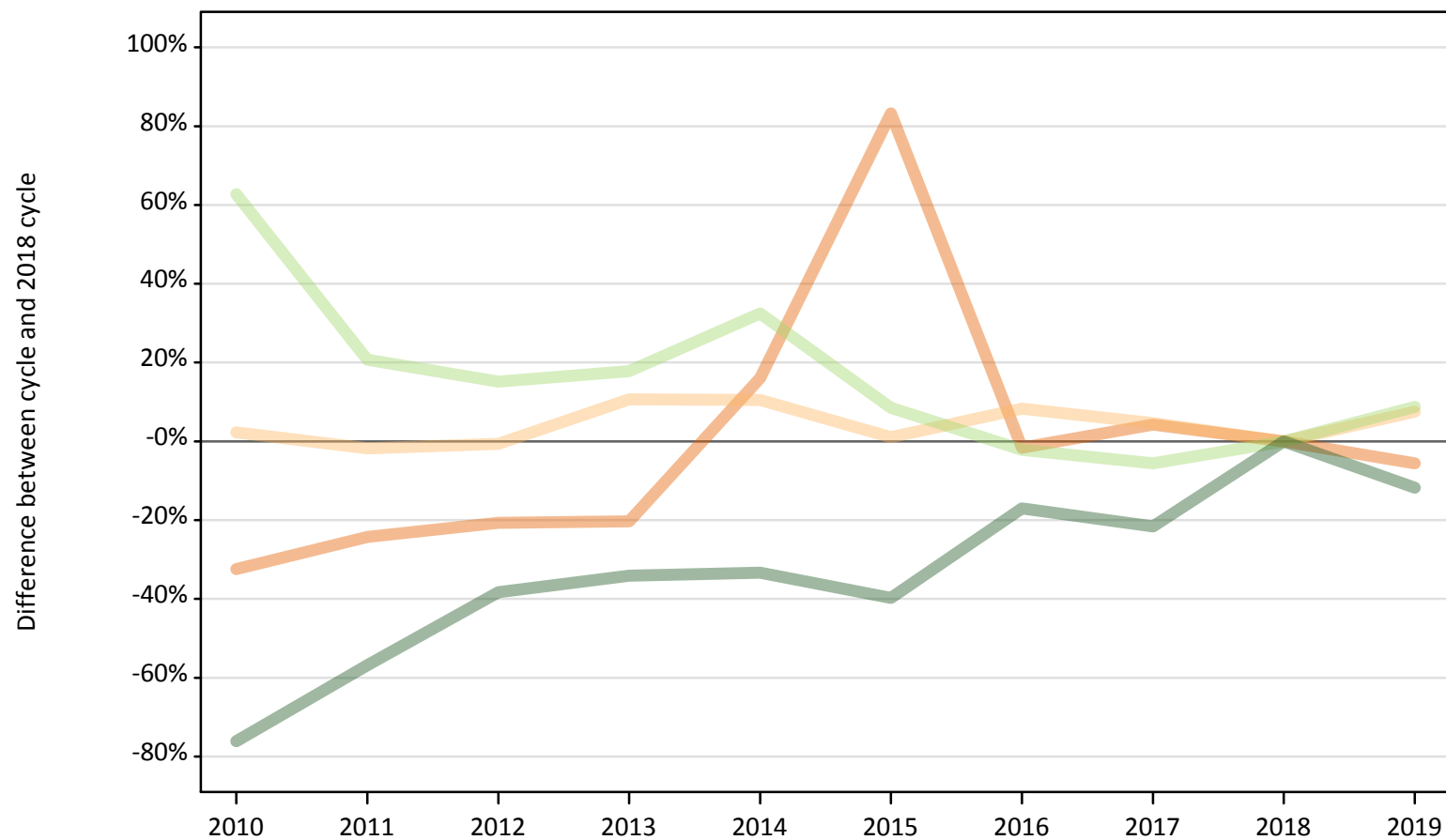
Selected applicant domiciles: difference between cycle and 2018 cycle (at 7 days after A level results day)

Domicile of applicant	2010	2011	2012	2013	2014	2015	2016	2017	2018	2019
England	-4%	-1%	-9%	-3%	0%	3%	4%	3%	0%	-0%
Northern Ireland	-12%	2%	-18%	-12%	-10%	1%	5%	3%	0%	-15%
Scotland	16%	8%	-5%	0%	-2%	9%	13%	8%	0%	1%
Wales	-19%	-19%	-7%	-7%	2%	6%	7%	4%	0%	1%
EU (excluding UK)	-25%	-19%	-33%	-27%	-21%	-10%	-2%	-3%	0%	0%
Not EU	-26%	-26%	-22%	-17%	-12%	-8%	-7%	-5%	0%	5%

Note: The percentage change is not recorded in the above table for groups with fewer than 10 placed applicants in that cycle or in the 2018 cycle.

**B.7 Placed applicants at 7 days after A level results day: providers in Northern Ireland**  
 Selected applicant domiciles: difference between cycle and 2018 cycle (at 7 days after A level results day)

- England
- Northern Ireland
- Scotland
- Wales
- EU (excluding UK)
- Not EU



Note: The percentage change is not plotted in the above chart for groups with fewer than 30 placed applicants in any one cycle.

**B.8 Placed applicants at 7 days after A level results day: providers in Northern Ireland**

Placed applicants by domicile (at 7 days after A level results day)

Domicile of applicant	2010	2011	2012	2013	2014	2015	2016	2017	2018	2019
England	210	230	240	240	350	560	300	320	310	290
Northern Ireland	8,310	7,980	8,070	8,990	8,970	8,210	8,790	8,500	8,120	8,730
Scotland	20	20	30	10	20	20	20	30	30	20
Wales	10	10	0	0	10	10	10	10	10	10
EU (excluding UK)	610	450	430	440	500	410	370	360	380	410
Not EU	60	110	160	170	180	160	220	210	260	230

**B.9 Placed applicants at 7 days after A level results day: providers in Northern Ireland**

Selected applicant domiciles: difference between cycle and 2018 cycle (at 7 days after A level results day)

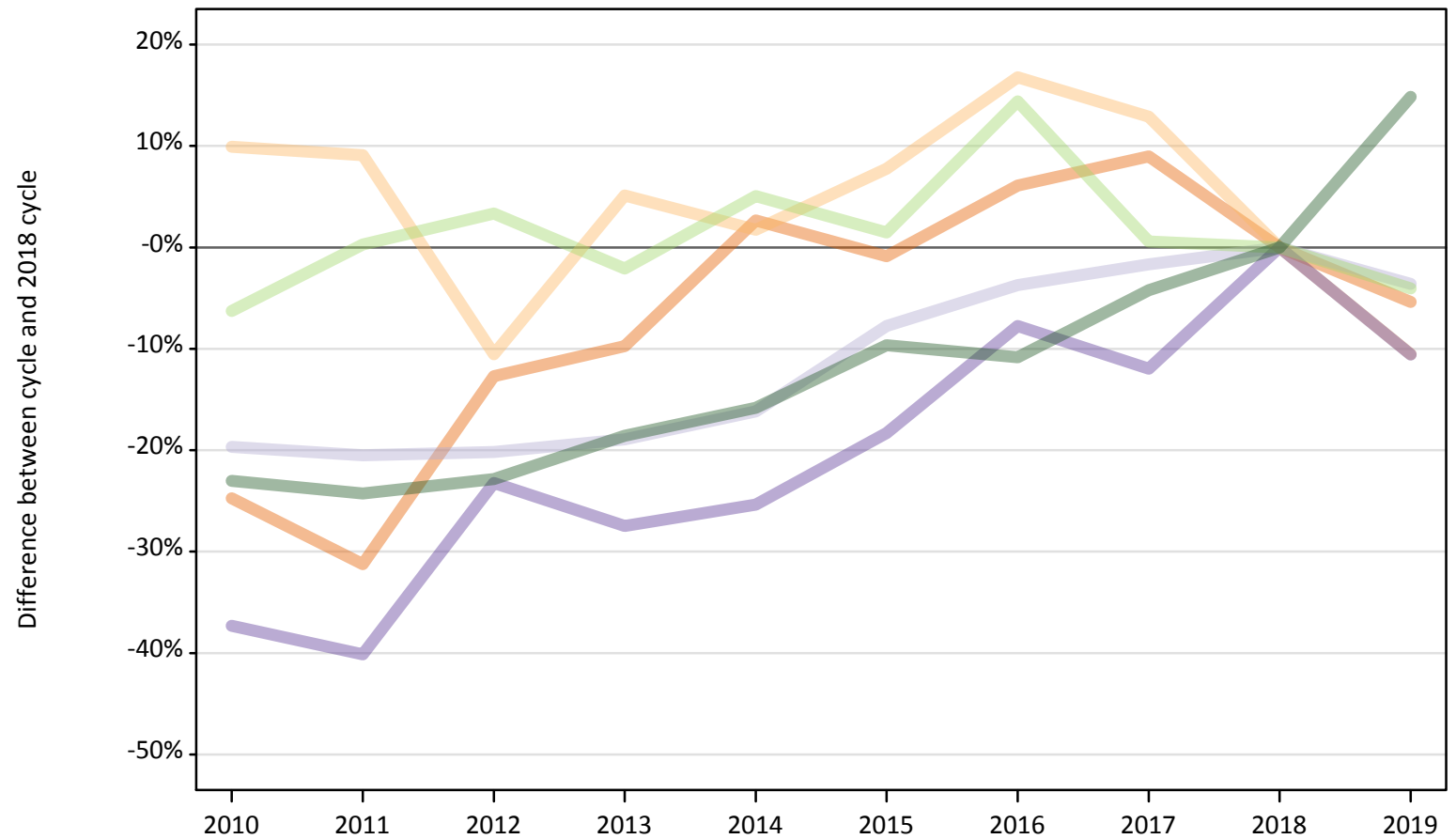
Domicile of applicant	2010	2011	2012	2013	2014	2015	2016	2017	2018	2019
England	-32%	-24%	-21%	-20%	16%	83%	-2%	4%	0%	-6%
Northern Ireland	2%	-2%	-1%	11%	10%	1%	8%	5%	0%	8%
Scotland	-8%	-31%	4%	-54%	-35%	-27%	-31%	19%	0%	-31%
Wales						10%	0%	40%	0%	20%
EU (excluding UK)	63%	21%	15%	18%	32%	9%	-2%	-6%	0%	9%
Not EU	-76%	-57%	-38%	-34%	-33%	-40%	-17%	-22%	0%	-12%

Note: The percentage change is not recorded in the above table for groups with fewer than 10 placed applicants in that cycle or in the 2018 cycle.

### B.10 Placed applicants at 7 days after A level results day: providers in Scotland

Selected applicant domiciles: difference between cycle and 2018 cycle (at 7 days after A level results day)

- England
- Northern Ireland
- Scotland
- Wales
- EU (excluding UK)
- Not EU



Note: The percentage change is not plotted in the above chart for groups with fewer than 30 placed applicants in any one cycle.

**B.11 Placed applicants at 7 days after A level results day: providers in Scotland**

Placed applicants by domicile (at 7 days after A level results day)

Domicile of applicant	2010	2011	2012	2013	2014	2015	2016	2017	2018	2019
England	3,440	3,150	3,990	4,130	4,700	4,540	4,850	4,990	4,580	4,330
Northern Ireland	1,080	1,070	880	1,030	1,000	1,050	1,140	1,100	980	880
Scotland	26,170	25,900	26,010	26,410	27,310	30,060	31,370	32,040	32,580	31,410
Wales	90	90	110	100	110	120	130	130	140	130
EU (excluding UK)	3,750	4,010	4,130	3,910	4,200	4,060	4,570	4,020	4,000	3,840
Not EU	2,230	2,190	2,230	2,350	2,430	2,610	2,580	2,770	2,890	3,320

**B.12 Placed applicants at 7 days after A level results day: providers in Scotland**

Selected applicant domiciles: difference between cycle and 2018 cycle (at 7 days after A level results day)

Domicile of applicant	2010	2011	2012	2013	2014	2015	2016	2017	2018	2019
England	-25%	-31%	-13%	-10%	3%	-1%	6%	9%	0%	-5%
Northern Ireland	10%	9%	-11%	5%	2%	8%	17%	13%	0%	-11%
Scotland	-20%	-20%	-20%	-19%	-16%	-8%	-4%	-2%	0%	-4%
Wales	-37%	-40%	-23%	-27%	-25%	-18%	-8%	-12%	0%	-11%
EU (excluding UK)	-6%	0%	3%	-2%	5%	1%	14%	1%	0%	-4%
Not EU	-23%	-24%	-23%	-19%	-16%	-10%	-11%	-4%	0%	15%

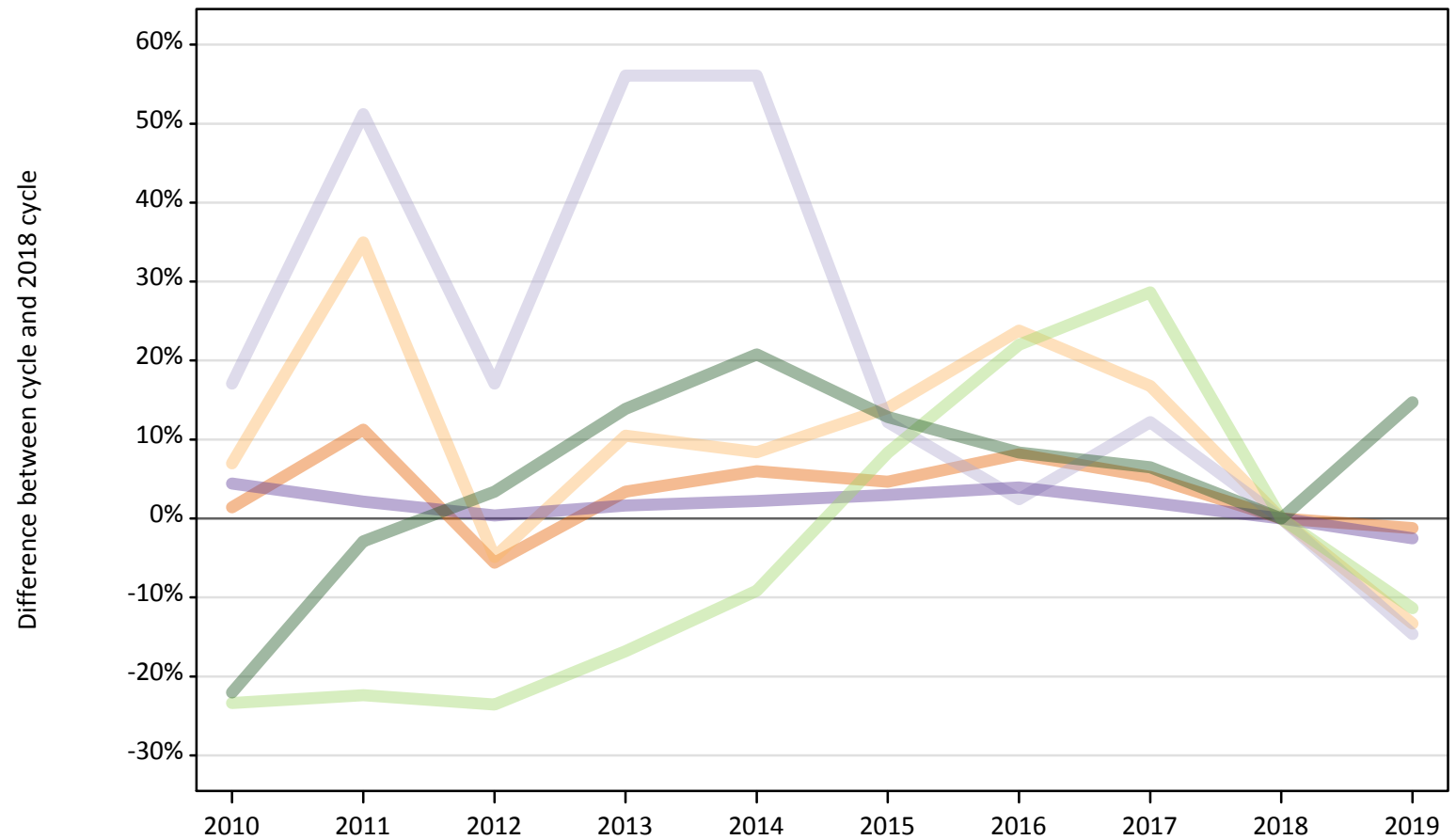
Note: The percentage change is not recorded in the above table for groups with fewer than 10 placed applicants in that cycle or in the 2018 cycle.



### B.13 Placed applicants at 7 days after A level results day: providers in Wales

Selected applicant domiciles: difference between cycle and 2018 cycle (at 7 days after A level results day)

- England
- Northern Ireland
- Scotland
- Wales
- EU (excluding UK)
- Not EU



Note: The percentage change is not plotted in the above chart for groups with fewer than 30 placed applicants in any one cycle.

**B.14 Placed applicants at 7 days after A level results day: providers in Wales**

Placed applicants by domicile (at 7 days after A level results day)

Domicile of applicant	2010	2011	2012	2013	2014	2015	2016	2017	2018	2019
England	9,880	10,840	9,200	10,070	10,330	10,190	10,530	10,250	9,740	9,620
Northern Ireland	150	190	140	160	160	160	180	170	140	120
Scotland	50	60	50	60	60	50	40	50	40	40
Wales	10,620	10,390	10,210	10,340	10,390	10,470	10,570	10,370	10,170	9,910
EU (excluding UK)	830	840	830	900	980	1,170	1,320	1,390	1,080	960
Not EU	760	940	1,010	1,110	1,170	1,100	1,050	1,040	970	1,120

**B.15 Placed applicants at 7 days after A level results day: providers in Wales**

Selected applicant domiciles: difference between cycle and 2018 cycle (at 7 days after A level results day)

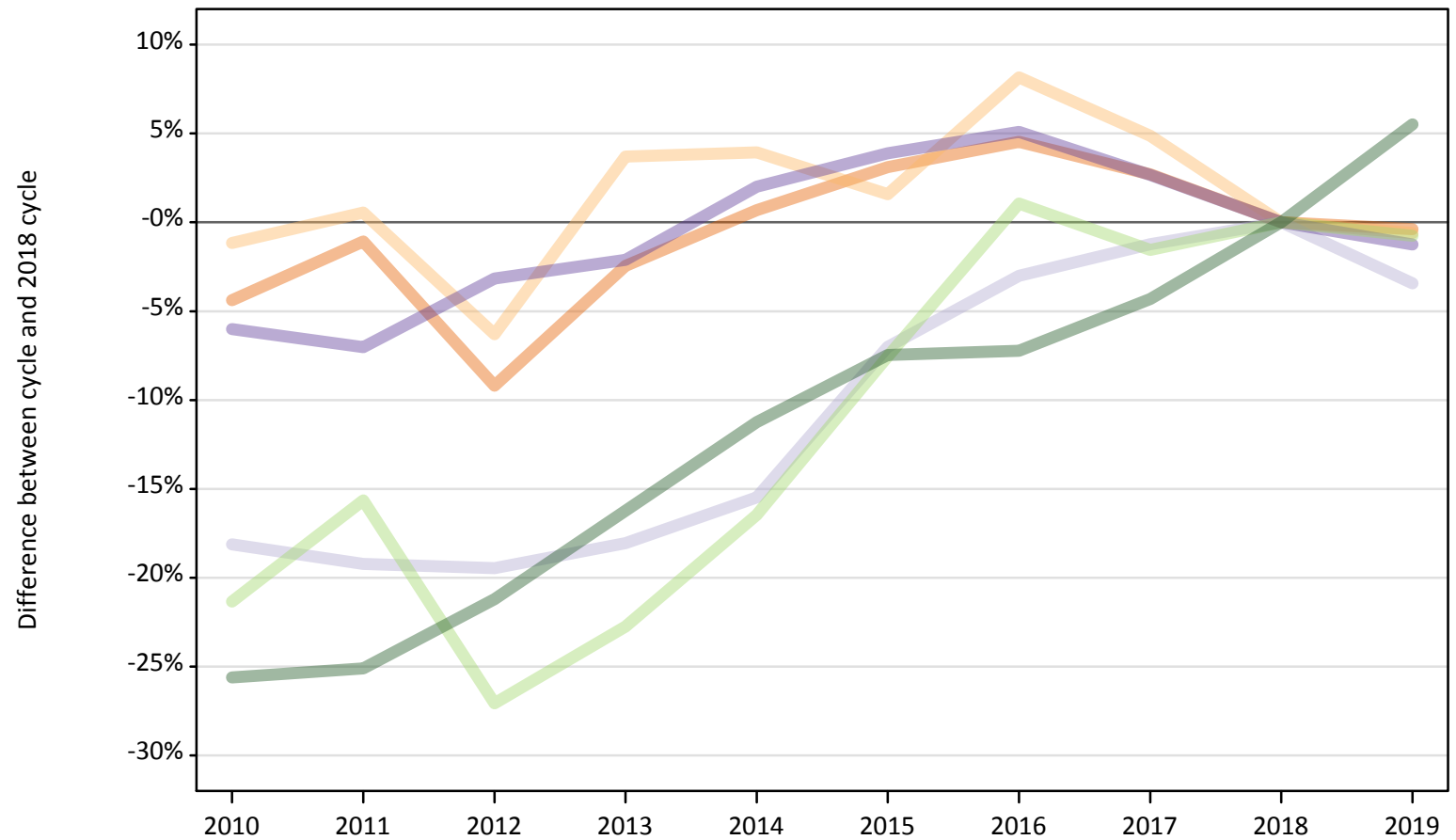
Domicile of applicant	2010	2011	2012	2013	2014	2015	2016	2017	2018	2019
England	1%	11%	-6%	3%	6%	5%	8%	5%	0%	-1%
Northern Ireland	7%	35%	-5%	10%	8%	14%	24%	17%	0%	-13%
Scotland	17%	51%	17%	56%	56%	12%	2%	12%	0%	-15%
Wales	4%	2%	0%	2%	2%	3%	4%	2%	0%	-2%
EU (excluding UK)	-23%	-22%	-24%	-17%	-9%	8%	22%	29%	0%	-11%
Not EU	-22%	-3%	3%	14%	21%	13%	8%	6%	0%	15%

Note: The percentage change is not recorded in the above table for groups with fewer than 10 placed applicants in that cycle or in the 2018 cycle.

### B.16 Placed applicants at 7 days after A level results day: providers in the UK

Selected applicant domiciles: difference between cycle and 2018 cycle (at 7 days after A level results day)

- England
- Northern Ireland
- Scotland
- Wales
- EU (excluding UK)
- Not EU



Note: The percentage change is not plotted in the above chart for groups with fewer than 30 placed applicants in any one cycle.

**B.17 Placed applicants at 7 days after A level results day: providers in the UK**

Placed applicants by domicile (at 7 days after A level results day)

Domicile of applicant	2010	2011	2012	2013	2014	2015	2016	2017	2018	2019
England	325,830	337,140	309,450	332,450	343,110	351,400	356,210	350,000	340,790	339,480
Northern Ireland	12,810	13,030	12,140	13,440	13,470	13,160	14,020	13,590	12,960	12,880
Scotland	27,910	27,540	27,460	27,940	28,810	31,700	33,060	33,670	34,090	32,920
Wales	16,860	16,670	17,360	17,550	18,290	18,630	18,840	18,410	17,930	17,710
EU (excluding UK)	22,660	24,300	21,010	22,250	24,070	26,630	29,120	28,360	28,810	28,590
Not EU	26,650	26,830	28,230	30,010	31,800	33,150	33,230	34,280	35,820	37,800

**B.18 Placed applicants at 7 days after A level results day: providers in the UK**

Selected applicant domiciles: difference between cycle and 2018 cycle (at 7 days after A level results day)

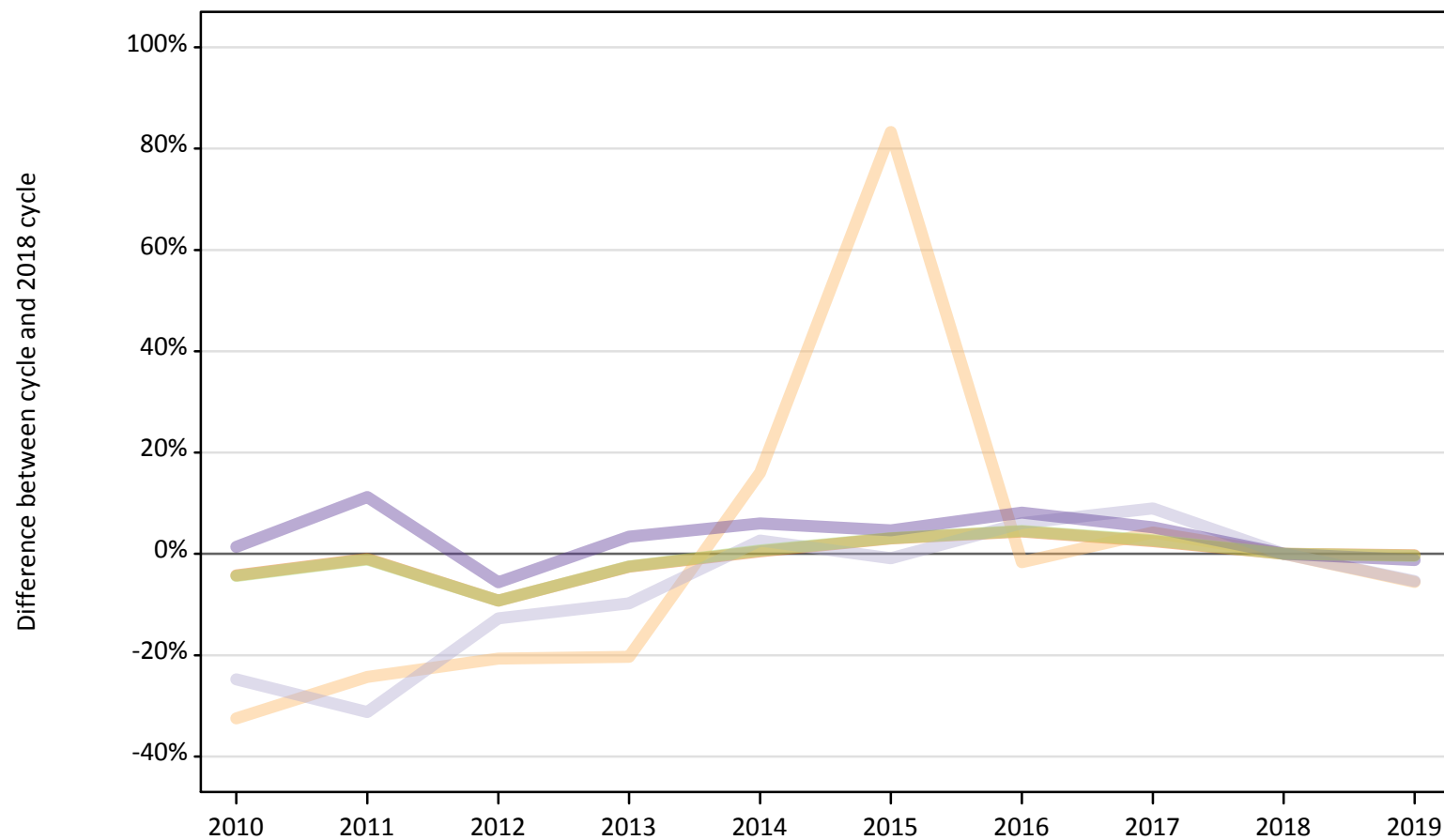
Domicile of applicant	2010	2011	2012	2013	2014	2015	2016	2017	2018	2019
England	-4%	-1%	-9%	-2%	1%	3%	5%	3%	0%	-0%
Northern Ireland	-1%	1%	-6%	4%	4%	2%	8%	5%	0%	-1%
Scotland	-18%	-19%	-19%	-18%	-15%	-7%	-3%	-1%	0%	-3%
Wales	-6%	-7%	-3%	-2%	2%	4%	5%	3%	0%	-1%
EU (excluding UK)	-21%	-16%	-27%	-23%	-16%	-8%	1%	-2%	0%	-1%
Not EU	-26%	-25%	-21%	-16%	-11%	-7%	-7%	-4%	0%	6%

Note: The percentage change is not recorded in the above table for groups with fewer than 10 placed applicants in that cycle or in the 2018 cycle.

### B.19 Placed applicants at 7 days after A level results day: domiciled in England

Selected provider countries: difference between cycle and 2018 cycle (at 7 days after A level results day)

- England
- Northern Ireland
- Scotland
- Wales
- UK



Note: The percentage change is not plotted in the above chart for groups with fewer than 30 placed applicants in any one cycle.

## B.20 Placed applicants at 7 days after A level results day: domiciled in England

Placed applicants by provider country (at 7 days after A level results day)

Country of provider	2010	2011	2012	2013	2014	2015	2016	2017	2018	2019
England	312,310	322,920	296,020	318,010	327,740	336,120	340,520	334,450	326,170	325,240
Northern Ireland	210	230	240	240	350	560	300	320	310	290
Scotland	3,440	3,150	3,990	4,130	4,700	4,540	4,850	4,990	4,580	4,330
Wales	9,880	10,840	9,200	10,070	10,330	10,190	10,530	10,250	9,740	9,620
UK	325,830	337,140	309,450	332,450	343,110	351,400	356,210	350,000	340,790	339,480

## B.21 Placed applicants at 7 days after A level results day: domiciled in England

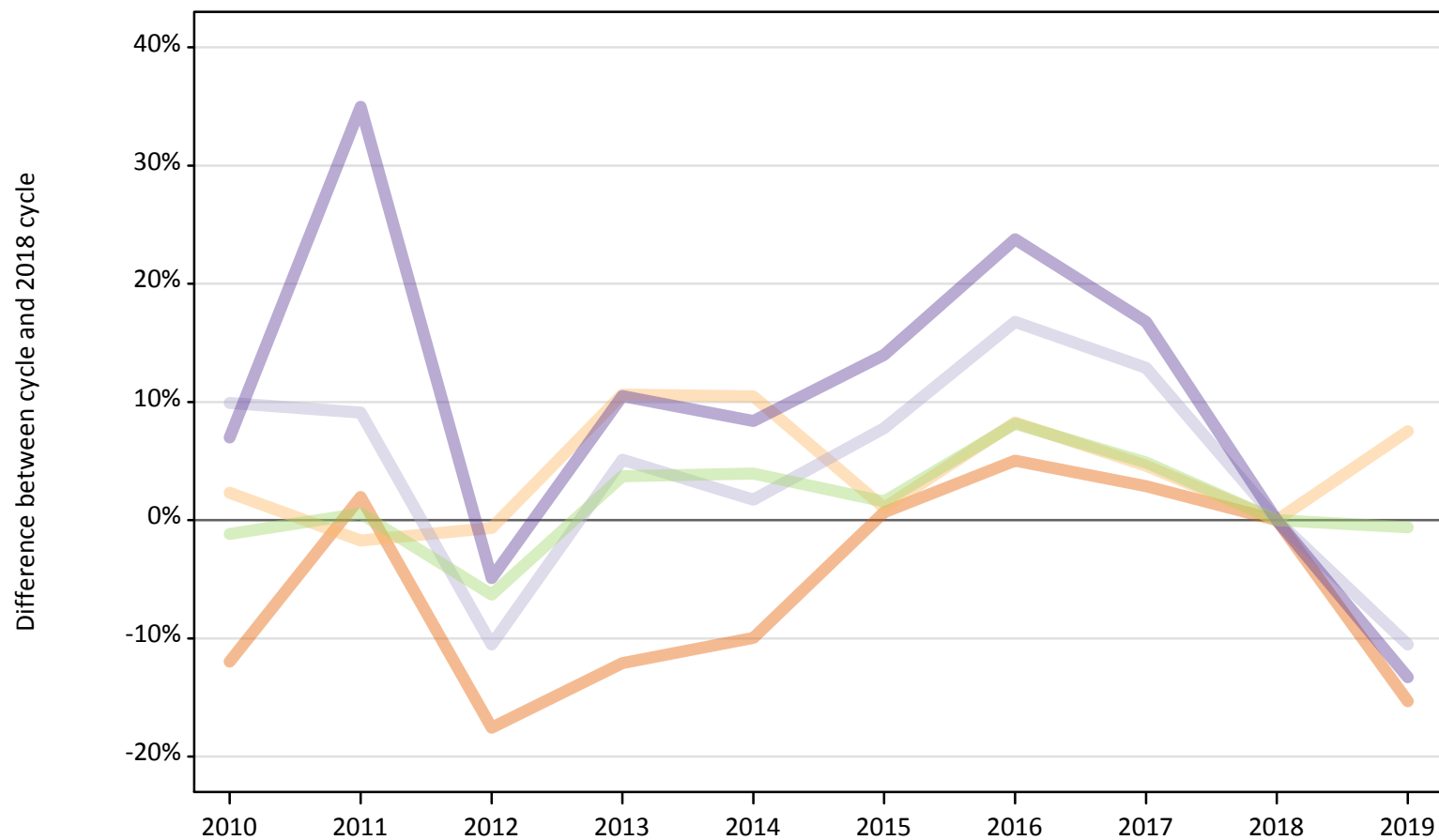
Selected provider countries: difference between cycle and 2018 cycle (at 7 days after A level results day)

Country of provider	2010	2011	2012	2013	2014	2015	2016	2017	2018	2019
England	-4%	-1%	-9%	-3%	0%	3%	4%	3%	0%	-0%
Northern Ireland	-32%	-24%	-21%	-20%	16%	83%	-2%	4%	0%	-6%
Scotland	-25%	-31%	-13%	-10%	3%	-1%	6%	9%	0%	-5%
Wales	1%	11%	-6%	3%	6%	5%	8%	5%	0%	-1%
UK	-4%	-1%	-9%	-2%	1%	3%	5%	3%	0%	-0%

Note: The percentage change is not recorded in the above table for groups with fewer than 10 placed applicants in that cycle or in the 2018 cycle.

**B.22 Placed applicants at 7 days after A level results day: domiciled in Northern Ireland**  
Selected provider countries: difference between cycle and 2018 cycle (at 7 days after A level results day)

- England
- Northern Ireland
- Scotland
- Wales
- UK



Note: The percentage change is not plotted in the above chart for groups with fewer than 30 placed applicants in any one cycle.

**B.23 Placed applicants at 7 days after A level results day: domiciled in Northern Ireland**

Placed applicants by provider country (at 7 days after A level results day)

Country of provider	2010	2011	2012	2013	2014	2015	2016	2017	2018	2019
England	3,270	3,790	3,060	3,270	3,350	3,740	3,900	3,820	3,720	3,150
Northern Ireland	8,310	7,980	8,070	8,990	8,970	8,210	8,790	8,500	8,120	8,730
Scotland	1,080	1,070	880	1,030	1,000	1,050	1,140	1,100	980	880
Wales	150	190	140	160	160	160	180	170	140	120
UK	12,810	13,030	12,140	13,440	13,470	13,160	14,020	13,590	12,960	12,880

**B.24 Placed applicants at 7 days after A level results day: domiciled in Northern Ireland**

Selected provider countries: difference between cycle and 2018 cycle (at 7 days after A level results day)

Country of provider	2010	2011	2012	2013	2014	2015	2016	2017	2018	2019
England	-12%	2%	-18%	-12%	-10%	1%	5%	3%	0%	-15%
Northern Ireland	2%	-2%	-1%	11%	10%	1%	8%	5%	0%	8%
Scotland	10%	9%	-11%	5%	2%	8%	17%	13%	0%	-11%
Wales	7%	35%	-5%	10%	8%	14%	24%	17%	0%	-13%
UK	-1%	1%	-6%	4%	4%	2%	8%	5%	0%	-1%

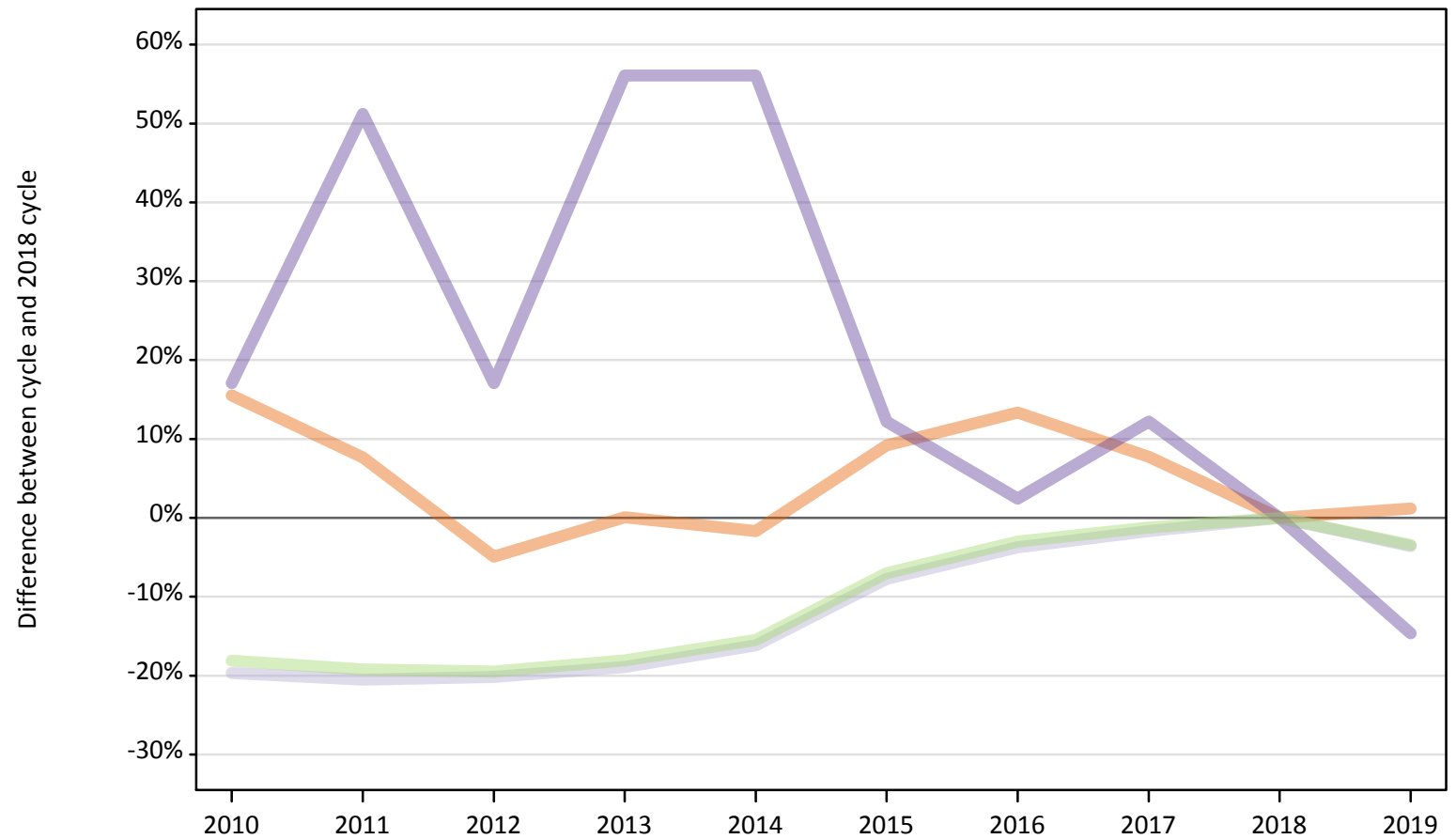
Note: The percentage change is not recorded in the above table for groups with fewer than 10 placed applicants in that cycle or in the 2018 cycle.



### B.25 Placed applicants at 7 days after A level results day: domiciled in Scotland

Selected provider countries: difference between cycle and 2018 cycle (at 7 days after A level results day)

- England
- Northern Ireland
- Scotland
- Wales
- UK



Note: The percentage change is not plotted in the above chart for groups with fewer than 30 placed applicants in any one cycle.

**B.26 Placed applicants at 7 days after A level results day: domiciled in Scotland**

Placed applicants by provider country (at 7 days after A level results day)

Country of provider	2010	2011	2012	2013	2014	2015	2016	2017	2018	2019
England	1,670	1,560	1,370	1,450	1,420	1,580	1,640	1,560	1,450	1,460
Northern Ireland	20	20	30	10	20	20	20	30	30	20
Scotland	26,170	25,900	26,010	26,410	27,310	30,060	31,370	32,040	32,580	31,410
Wales	50	60	50	60	60	50	40	50	40	40
UK	27,910	27,540	27,460	27,940	28,810	31,700	33,060	33,670	34,090	32,920

**B.27 Placed applicants at 7 days after A level results day: domiciled in Scotland**

Selected provider countries: difference between cycle and 2018 cycle (at 7 days after A level results day)

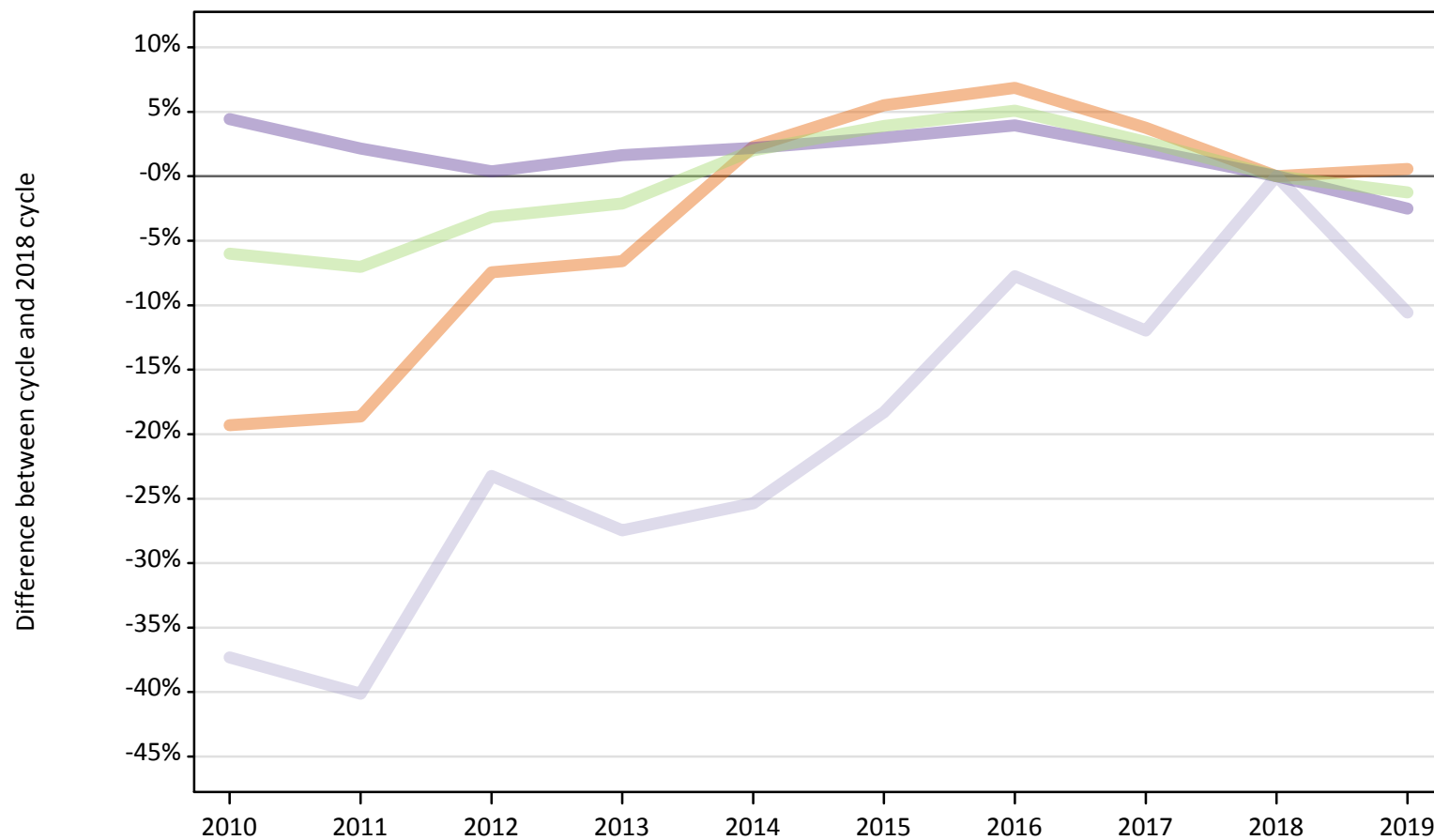
Country of provider	2010	2011	2012	2013	2014	2015	2016	2017	2018	2019
England	16%	8%	-5%	0%	-2%	9%	13%	8%	0%	1%
Northern Ireland	-8%	-31%	4%	-54%	-35%	-27%	-31%	19%	0%	-31%
Scotland	-20%	-20%	-20%	-19%	-16%	-8%	-4%	-2%	0%	-4%
Wales	17%	51%	17%	56%	56%	12%	2%	12%	0%	-15%
UK	-18%	-19%	-19%	-18%	-15%	-7%	-3%	-1%	0%	-3%

Note: The percentage change is not recorded in the above table for groups with fewer than 10 placed applicants in that cycle or in the 2018 cycle.

### B.28 Placed applicants at 7 days after A level results day: domiciled in Wales

Selected provider countries: difference between cycle and 2018 cycle (at 7 days after A level results day)

- England
- Northern Ireland
- Scotland
- Wales
- UK



Note: The percentage change is not plotted in the above chart for groups with fewer than 30 placed applicants in any one cycle.

**B.29 Placed applicants at 7 days after A level results day: domiciled in Wales**

Placed applicants by provider country (at 7 days after A level results day)

Country of provider	2010	2011	2012	2013	2014	2015	2016	2017	2018	2019
England	6,140	6,190	7,050	7,110	7,790	8,030	8,130	7,900	7,610	7,660
Northern Ireland	10	10	0	0	10	10	10	10	10	10
Scotland	90	90	110	100	110	120	130	130	140	130
Wales	10,620	10,390	10,210	10,340	10,390	10,470	10,570	10,370	10,170	9,910
UK	16,860	16,670	17,360	17,550	18,290	18,630	18,840	18,410	17,930	17,710

**B.30 Placed applicants at 7 days after A level results day: domiciled in Wales**

Selected provider countries: difference between cycle and 2018 cycle (at 7 days after A level results day)

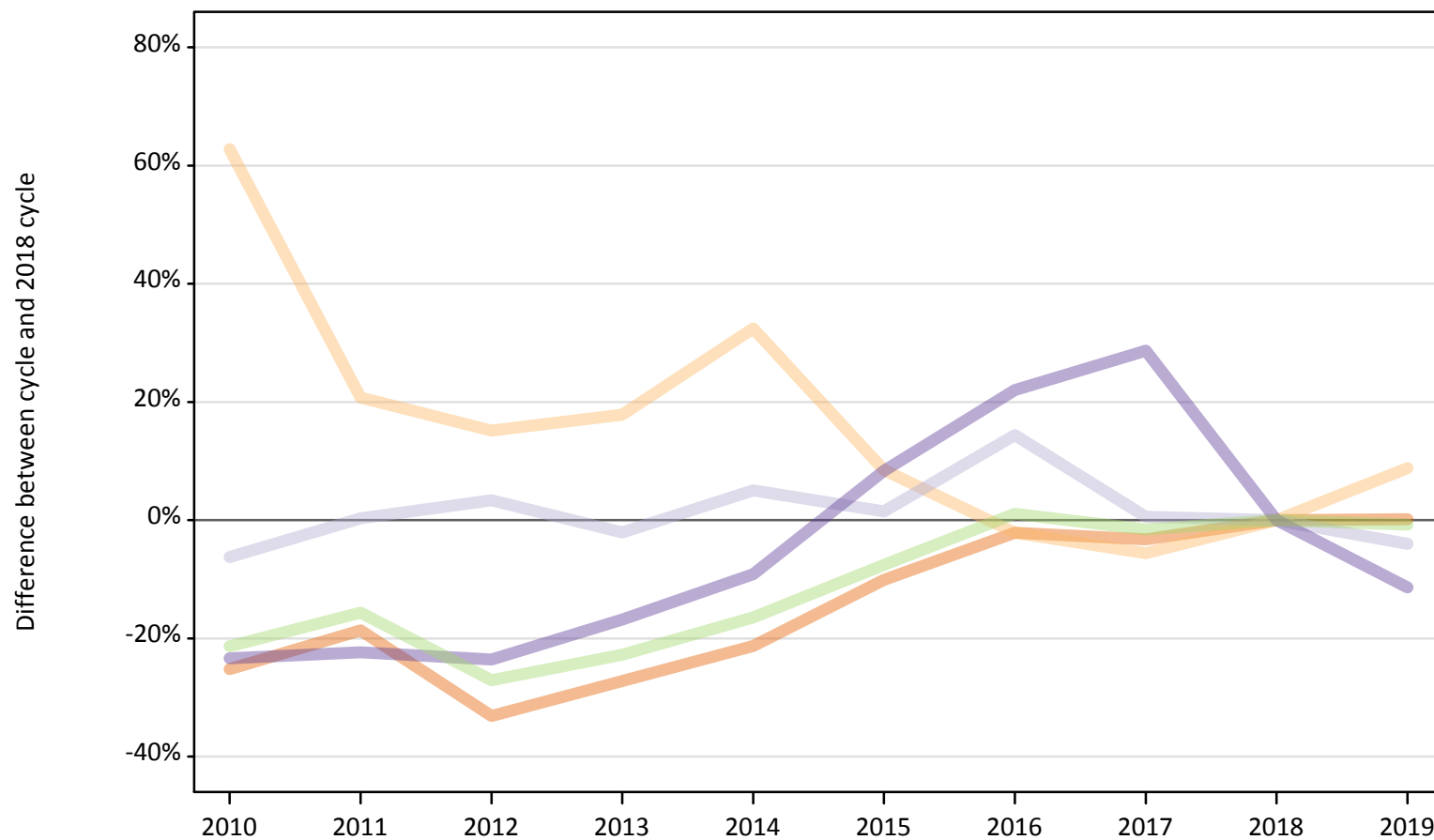
Country of provider	2010	2011	2012	2013	2014	2015	2016	2017	2018	2019
England	-19%	-19%	-7%	-7%	2%	6%	7%	4%	0%	1%
Northern Ireland						10%	0%	40%	0%	20%
Scotland	-37%	-40%	-23%	-27%	-25%	-18%	-8%	-12%	0%	-11%
Wales	4%	2%	0%	2%	2%	3%	4%	2%	0%	-2%
UK	-6%	-7%	-3%	-2%	2%	4%	5%	3%	0%	-1%

Note: The percentage change is not recorded in the above table for groups with fewer than 10 placed applicants in that cycle or in the 2018 cycle.

### B.31 Placed applicants at 7 days after A level results day: domiciled in EU (excluding UK)

Selected provider countries: difference between cycle and 2018 cycle (at 7 days after A level results day)

- England
- Northern Ireland
- Scotland
- Wales
- UK



Note: The percentage change is not plotted in the above chart for groups with fewer than 30 placed applicants in any one cycle.

### B.32 Placed applicants at 7 days after A level results day: domiciled in EU (excluding UK)

Placed applicants by provider country (at 7 days after A level results day)

Country of provider	2010	2011	2012	2013	2014	2015	2016	2017	2018	2019
England	17,470	19,000	15,620	17,000	18,390	21,000	22,850	22,590	23,350	23,390
Northern Ireland	610	450	430	440	500	410	370	360	380	410
Scotland	3,750	4,010	4,130	3,910	4,200	4,060	4,570	4,020	4,000	3,840
Wales	830	840	830	900	980	1,170	1,320	1,390	1,080	960
UK	22,660	24,300	21,010	22,250	24,070	26,630	29,120	28,360	28,810	28,590

### B.33 Placed applicants at 7 days after A level results day: domiciled in EU (excluding UK)

Selected provider countries: difference between cycle and 2018 cycle (at 7 days after A level results day)

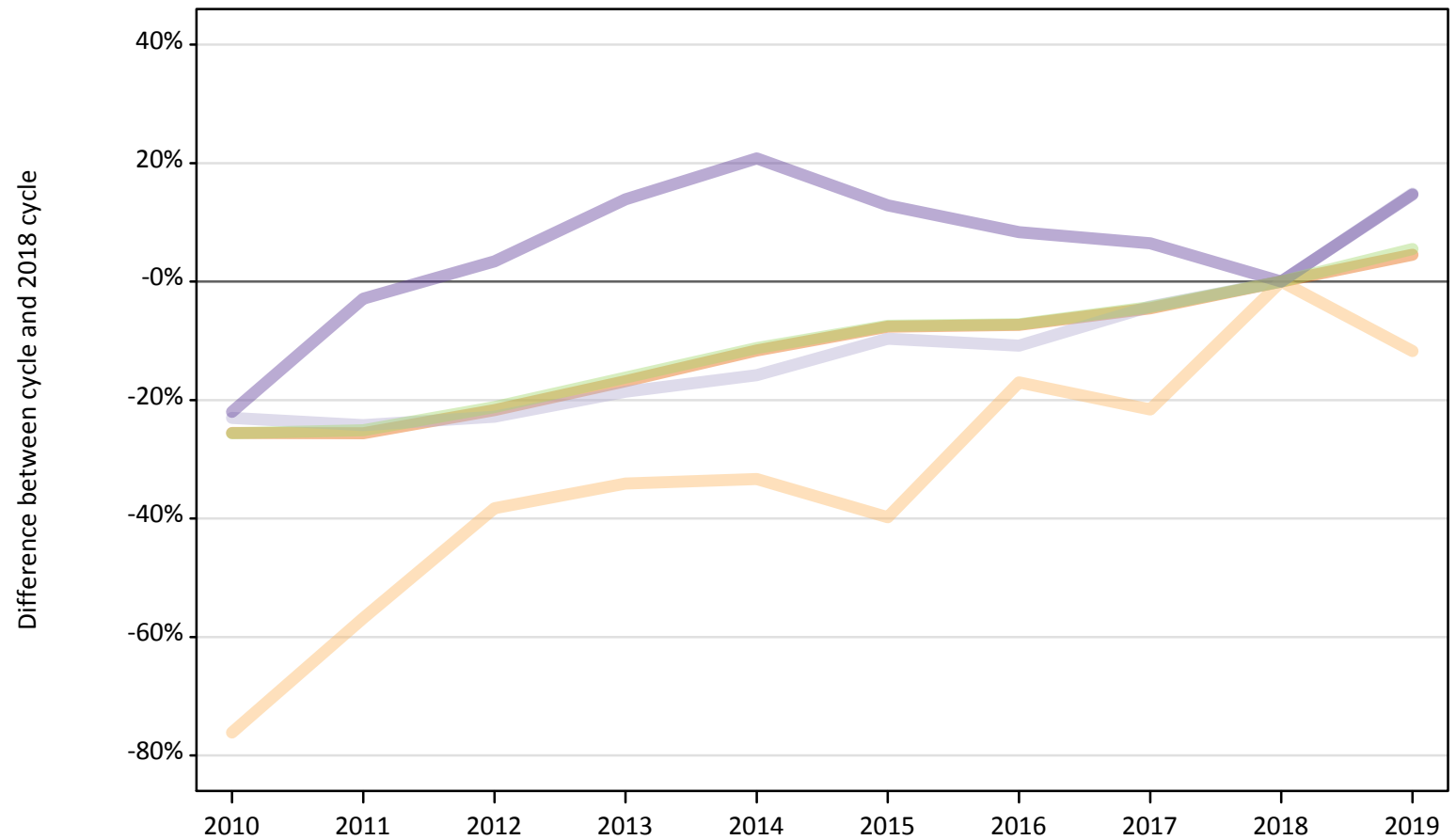
Country of provider	2010	2011	2012	2013	2014	2015	2016	2017	2018	2019
England	-25%	-19%	-33%	-27%	-21%	-10%	-2%	-3%	0%	0%
Northern Ireland	63%	21%	15%	18%	32%	9%	-2%	-6%	0%	9%
Scotland	-6%	0%	3%	-2%	5%	1%	14%	1%	0%	-4%
Wales	-23%	-22%	-24%	-17%	-9%	8%	22%	29%	0%	-11%
UK	-21%	-16%	-27%	-23%	-16%	-8%	1%	-2%	0%	-1%

Note: The percentage change is not recorded in the above table for groups with fewer than 10 placed applicants in that cycle or in the 2018 cycle.

### B.34 Placed applicants at 7 days after A level results day: domiciled in Not EU

Selected provider countries: difference between cycle and 2018 cycle (at 7 days after A level results day)

- England
- Northern Ireland
- Scotland
- Wales
- UK



Note: The percentage change is not plotted in the above chart for groups with fewer than 30 placed applicants in any one cycle.

### B.35 Placed applicants at 7 days after A level results day: domiciled in Not EU

Placed applicants by provider country (at 7 days after A level results day)

Country of provider	2010	2011	2012	2013	2014	2015	2016	2017	2018	2019
England	23,600	23,580	24,830	26,370	28,010	29,280	29,380	30,270	31,700	33,130
Northern Ireland	60	110	160	170	180	160	220	210	260	230
Scotland	2,230	2,190	2,230	2,350	2,430	2,610	2,580	2,770	2,890	3,320
Wales	760	940	1,010	1,110	1,170	1,100	1,050	1,040	970	1,120
UK	26,650	26,830	28,230	30,010	31,800	33,150	33,230	34,280	35,820	37,800

### B.36 Placed applicants at 7 days after A level results day: domiciled in Not EU

Selected provider countries: difference between cycle and 2018 cycle (at 7 days after A level results day)

Country of provider	2010	2011	2012	2013	2014	2015	2016	2017	2018	2019
England	-26%	-26%	-22%	-17%	-12%	-8%	-7%	-5%	0%	5%
Northern Ireland	-76%	-57%	-38%	-34%	-33%	-40%	-17%	-22%	0%	-12%
Scotland	-23%	-24%	-23%	-19%	-16%	-10%	-11%	-4%	0%	15%
Wales	-22%	-3%	3%	14%	21%	13%	8%	6%	0%	15%
UK	-26%	-25%	-21%	-16%	-11%	-7%	-7%	-4%	0%	6%

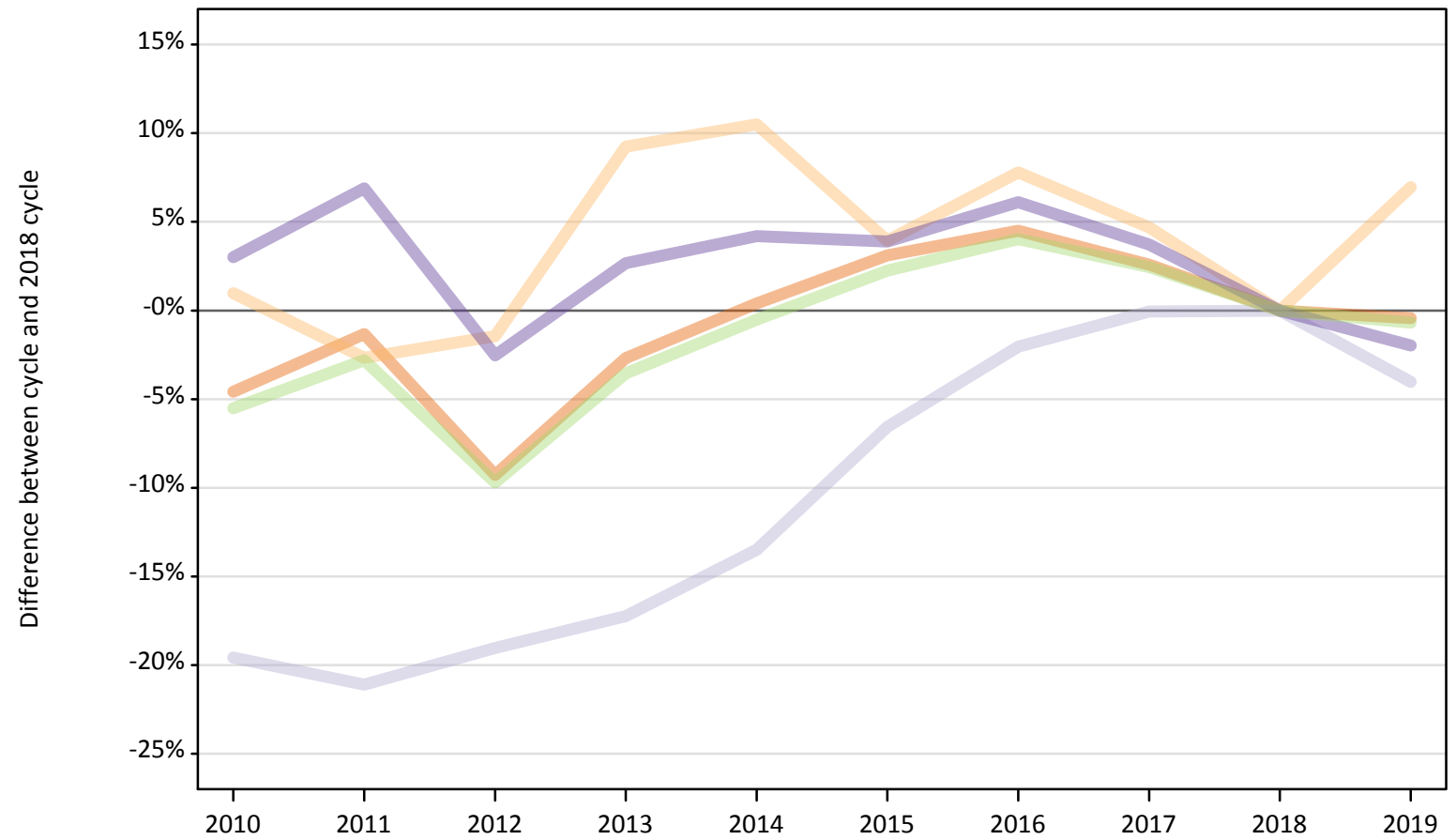
Note: The percentage change is not recorded in the above table for groups with fewer than 10 placed applicants in that cycle or in the 2018 cycle.



### B.37 Placed applicants at 7 days after A level results day: domiciled in UK

Selected provider countries: difference between cycle and 2018 cycle (at 7 days after A level results day)

- England
- Northern Ireland
- Scotland
- Wales
- UK



Note: The percentage change is not plotted in the above chart for groups with fewer than 30 placed applicants in any one cycle.

**B.38 Placed applicants at 7 days after A level results day: domiciled in UK**

Placed applicants by provider country (at 7 days after A level results day)

Country of provider	2010	2011	2012	2013	2014	2015	2016	2017	2018	2019
England	323,390	334,460	307,500	329,830	340,290	349,470	354,190	347,720	338,940	337,500
Northern Ireland	8,550	8,240	8,340	9,250	9,350	8,800	9,120	8,860	8,460	9,050
Scotland	30,780	30,200	30,980	31,670	33,110	35,760	37,490	38,250	38,270	36,740
Wales	20,700	21,480	19,590	20,630	20,940	20,870	21,320	20,840	20,090	19,700
UK	383,410	394,370	366,410	391,380	403,690	414,900	422,130	415,680	405,770	402,980

**B.39 Placed applicants at 7 days after A level results day: domiciled in UK**

Selected provider countries: difference between cycle and 2018 cycle (at 7 days after A level results day)

Country of provider	2010	2011	2012	2013	2014	2015	2016	2017	2018	2019
England	-5%	-1%	-9%	-3%	0%	3%	4%	3%	0%	-0%
Northern Ireland	1%	-3%	-1%	9%	10%	4%	8%	5%	0%	7%
Scotland	-20%	-21%	-19%	-17%	-13%	-7%	-2%	-0%	0%	-4%
Wales	3%	7%	-3%	3%	4%	4%	6%	4%	0%	-2%
UK	-6%	-3%	-10%	-4%	-1%	2%	4%	2%	0%	-1%

Note: The percentage change is not recorded in the above table for groups with fewer than 10 placed applicants in that cycle or in the 2018 cycle.