

Analysis at 00:05 on Thursday 22 August 2019 (7 days after A level results day)

C.1 Placed applicants by country of domicile and age group, 2019 cycle (7 days after A level results day)

Domicile of applicant	Age group				
	17 and under	18	19	20 to 24	25 and over
England	560	203,530	63,530	44,340	27,510
Northern Ireland	30	7,670	2,240	2,170	770
Scotland	510	14,030	4,300	7,650	6,430
Wales	20	9,800	3,240	2,670	1,980
UK	1,120	235,040	73,320	56,820	36,690

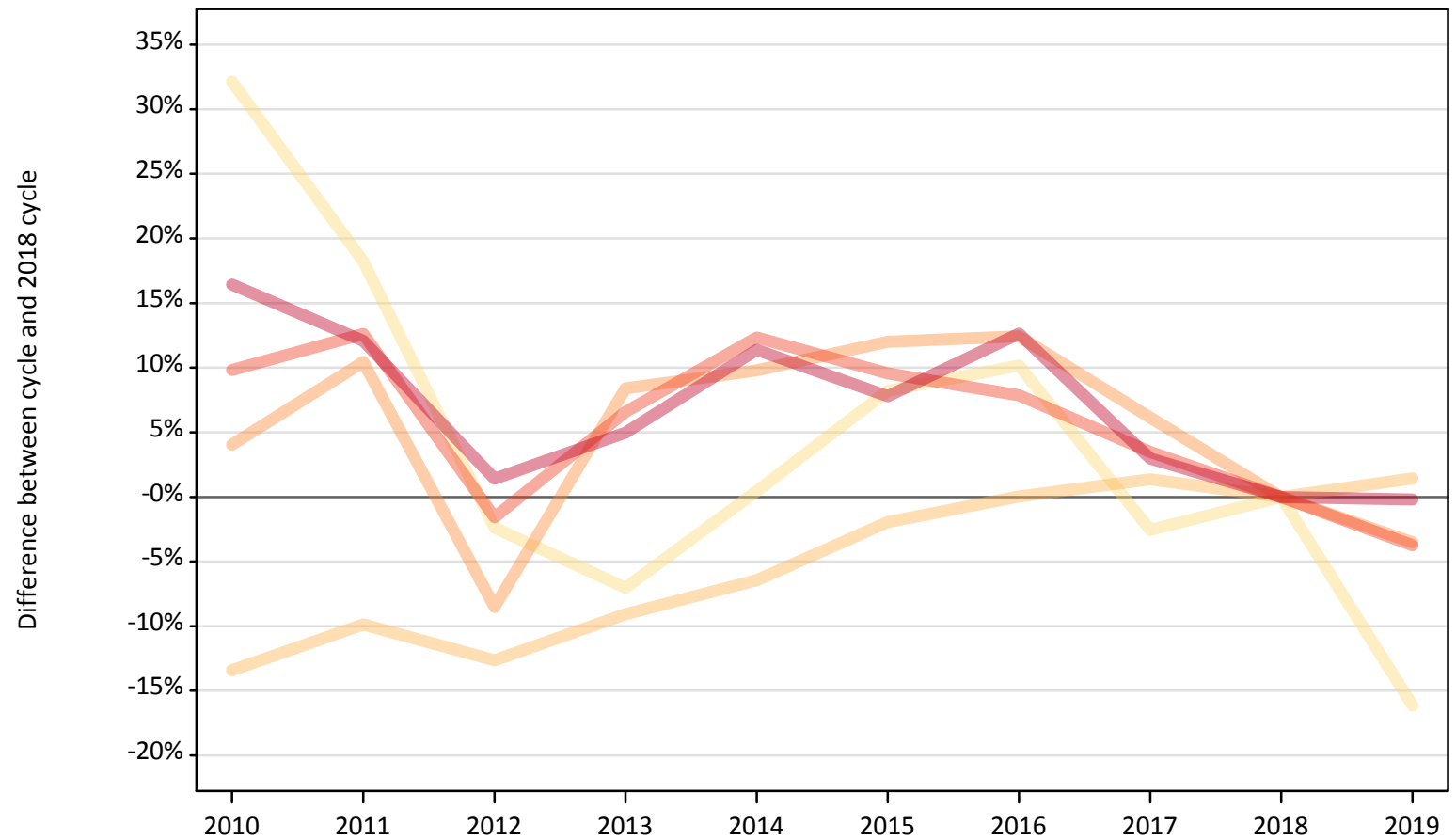
C.2 Proportion of 18 year old population placed by country of domicile, 2019 cycle (7 days after A level results day)

Domicile of applicant	Age group	2019
England	18	34.0%
Northern Ireland	18	34.2%
Scotland	18	26.1%
Wales	18	29.2%

C.3 Placed applicants from England by age group at 7 days after A level results day

Selected age groups: difference between cycle and 2018 cycle

- 17 and under
- 18
- 19
- 20 to 24
- 25 and over



Note: The percentage change is not plotted in the above chart for groups with fewer than 30 placed applicants in any one cycle.

C.4 Placed applicants from England by age group at 7 days after A level results day

All age groups

Domicile of applicant	Age group	2010	2011	2012	2013	2014	2015	2016	2017	2018	2019
England	17 and under	880	790	650	620	670	720	740	650	670	560
	18	173,750	180,850	175,270	182,420	187,710	196,750	200,710	203,410	200,650	203,530
	19	68,500	72,720	60,240	71,370	72,290	73,750	74,030	69,890	65,840	63,530
	20 to 24	50,590	51,880	45,340	49,100	51,750	50,470	49,680	47,670	46,070	44,340
	25 and over	32,100	30,900	27,950	28,940	30,700	29,720	31,050	28,380	27,570	27,510

C.5 Placed applicants from England by age group at 7 days after A level results day

Selected age groups: difference between cycle and 2018 cycle

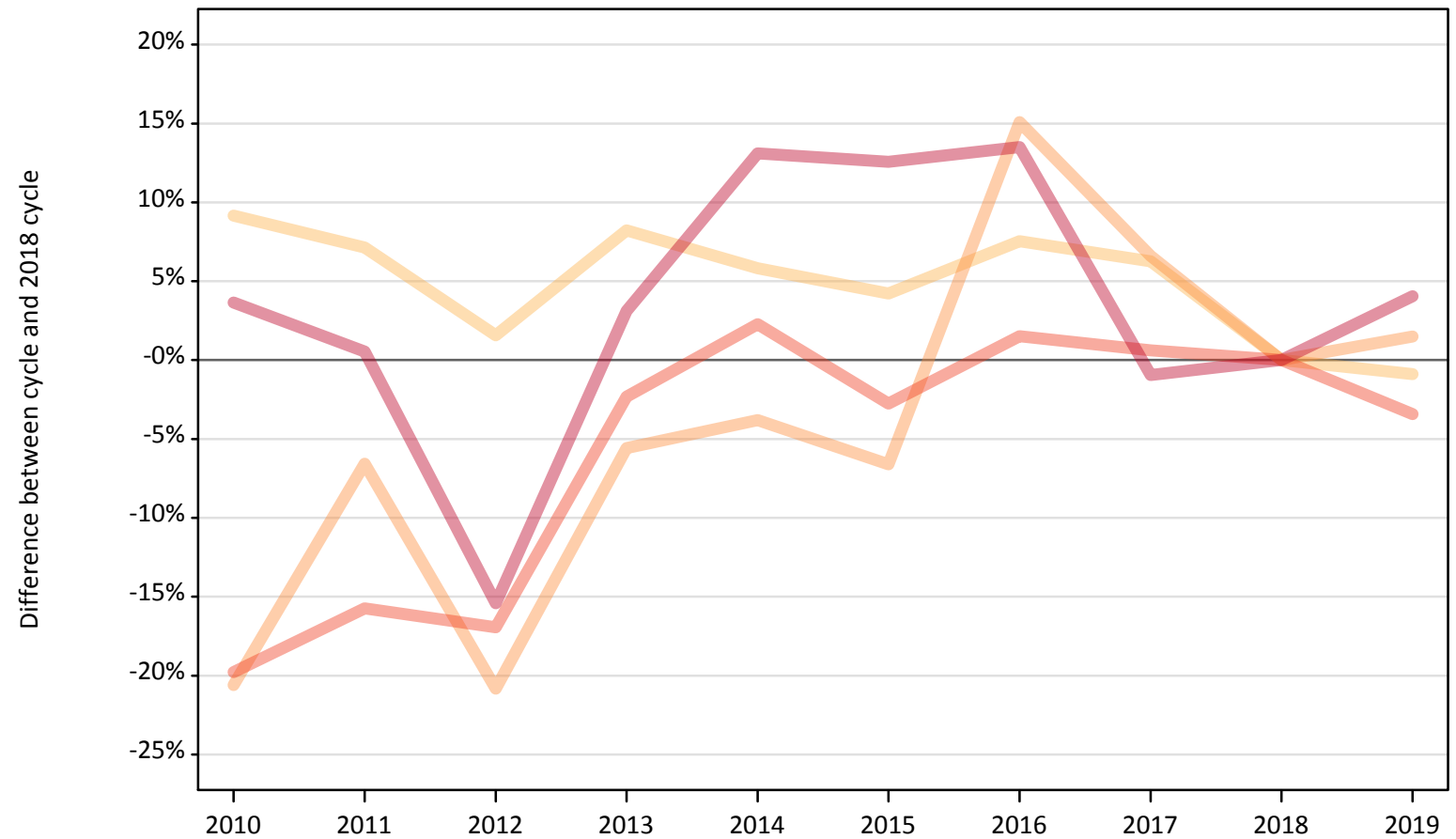
Domicile of applicant	Age group	2010	2011	2012	2013	2014	2015	2016	2017	2018	2019
England	17 and under	32%	18%	-2%	-7%	0%	8%	10%	-3%	0%	-16%
	18	-13%	-10%	-13%	-9%	-6%	-2%	0%	1%	0%	1%
	19	4%	10%	-9%	8%	10%	12%	12%	6%	0%	-4%
	20 to 24	10%	13%	-2%	7%	12%	10%	8%	3%	0%	-4%
	25 and over	16%	12%	1%	5%	11%	8%	13%	3%	0%	-0%

Note: The percentage change is not recorded in the above table for groups with fewer than 10 placed applicants in that cycle or in the 2018 cycle.

C.6 Placed applicants from Northern Ireland by age group at 7 days after A level results day

Selected age groups: difference between cycle and 2018 cycle

- 17 and under
- 18
- 19
- 20 to 24
- 25 and over



Note: The percentage change is not plotted in the above chart for groups with fewer than 30 placed applicants in any one cycle.

C.7 Placed applicants from Northern Ireland by age group at 7 days after A level results day

All age groups

Domicile of applicant	Age group	2010	2011	2012	2013	2014	2015	2016	2017	2018	2019
Northern Ireland	17 and under	40	40	40	20	20	20	30	20	20	30
	18	8,450	8,290	7,860	8,370	8,190	8,060	8,320	8,220	7,740	7,670
	19	1,750	2,060	1,750	2,090	2,120	2,060	2,540	2,350	2,210	2,240
	20 to 24	1,800	1,900	1,870	2,200	2,300	2,190	2,280	2,260	2,250	2,170
	25 and over	770	740	630	760	840	830	840	730	740	770

C.8 Placed applicants from Northern Ireland by age group at 7 days after A level results day

Selected age groups: difference between cycle and 2018 cycle

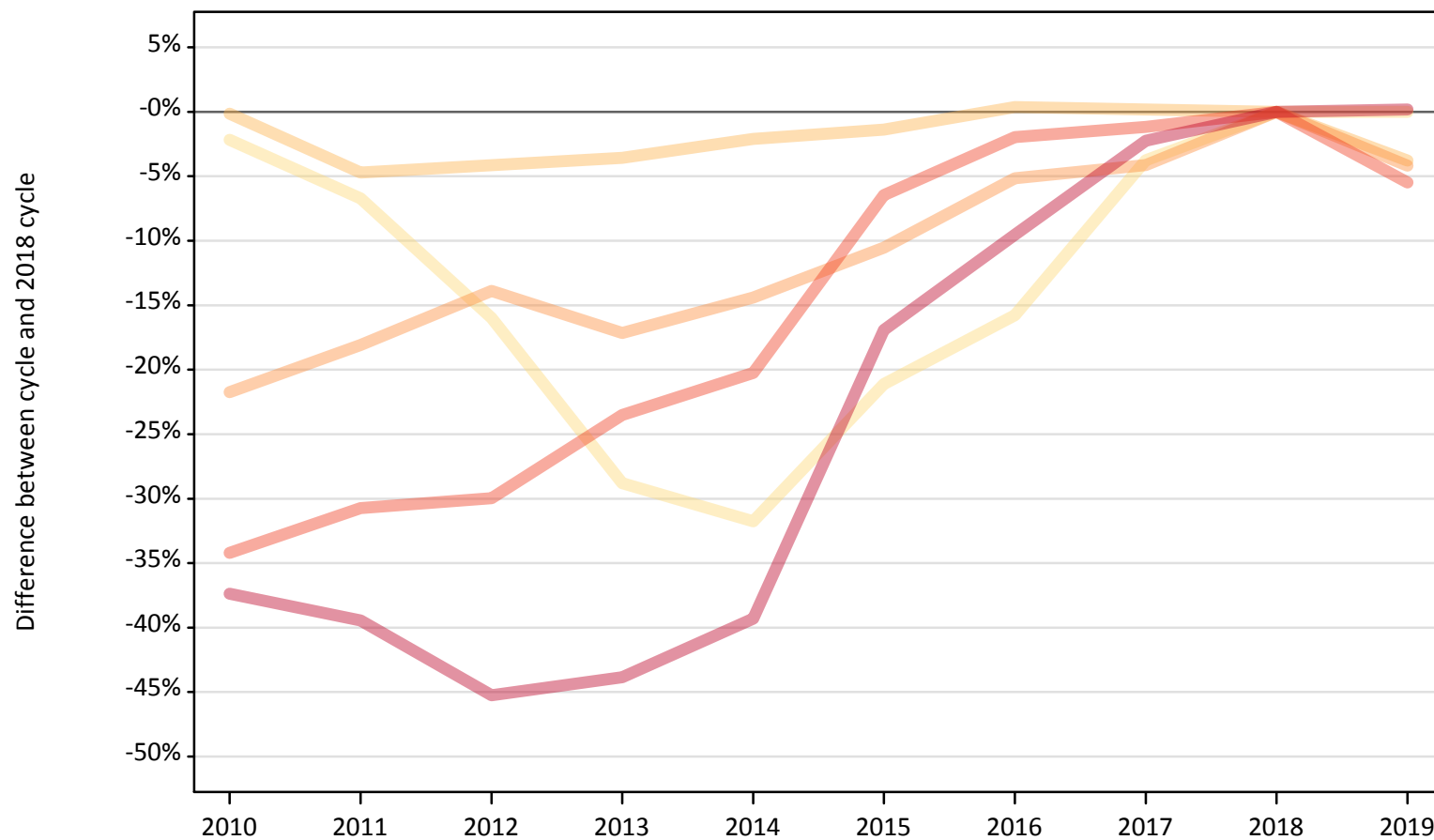
Domicile of applicant	Age group	2010	2011	2012	2013	2014	2015	2016	2017	2018	2019
Northern Ireland	17 and under	54%	58%	75%	-17%	-21%	-25%	29%	-29%	0%	13%
	18	9%	7%	2%	8%	6%	4%	8%	6%	0%	-1%
	19	-21%	-7%	-21%	-6%	-4%	-7%	15%	7%	0%	1%
	20 to 24	-20%	-16%	-17%	-2%	2%	-3%	2%	1%	0%	-3%
	25 and over	4%	1%	-15%	3%	13%	13%	14%	-1%	0%	4%

Note: The percentage change is not recorded in the above table for groups with fewer than 10 placed applicants in that cycle or in the 2018 cycle.

C.9 Placed applicants from Scotland by age group at 7 days after A level results day

Selected age groups: difference between cycle and 2018 cycle

- 17 and under
- 18
- 19
- 20 to 24
- 25 and over



Note: The percentage change is not plotted in the above chart for groups with fewer than 30 placed applicants in any one cycle.

C.10 Placed applicants from Scotland by age group at 7 days after A level results day

All age groups

Domicile of applicant	Age group	2010	2011	2012	2013	2014	2015	2016	2017	2018	2019
Scotland	17 and under	500	470	430	360	350	400	430	490	510	510
	18	14,560	13,890	13,980	14,060	14,270	14,380	14,630	14,610	14,580	14,030
	19	3,510	3,680	3,870	3,720	3,840	4,020	4,260	4,300	4,490	4,300
	20 to 24	5,320	5,600	5,670	6,190	6,450	7,570	7,930	8,000	8,090	7,650
	25 and over	4,020	3,890	3,520	3,610	3,900	5,340	5,810	6,280	6,420	6,430

C.11 Placed applicants from Scotland by age group at 7 days after A level results day

Selected age groups: difference between cycle and 2018 cycle

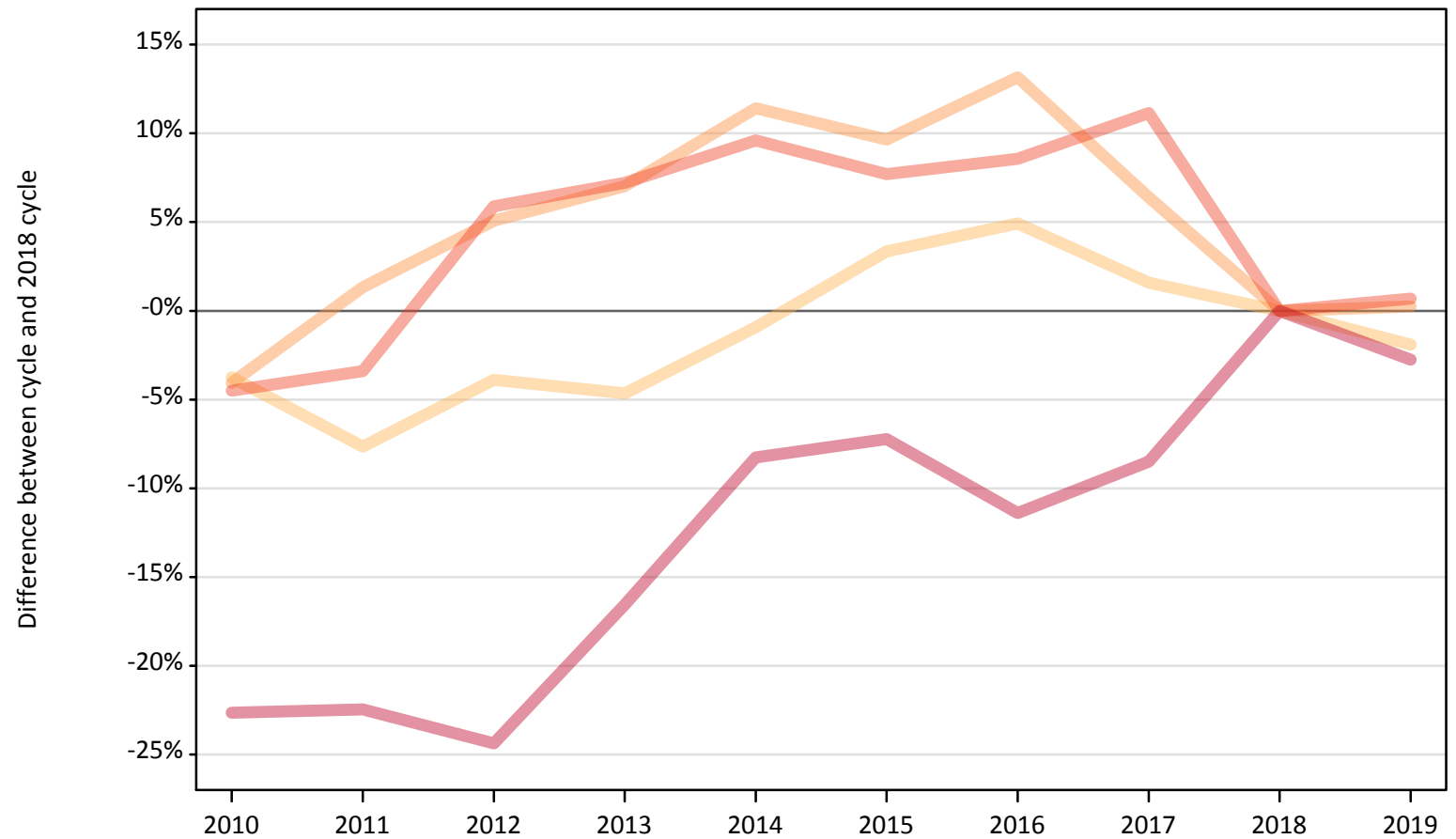
Domicile of applicant	Age group	2010	2011	2012	2013	2014	2015	2016	2017	2018	2019
Scotland	17 and under	-2%	-7%	-16%	-29%	-32%	-21%	-16%	-4%	0%	0%
	18	-0%	-5%	-4%	-4%	-2%	-1%	0%	0%	0%	-4%
	19	-22%	-18%	-14%	-17%	-14%	-11%	-5%	-4%	0%	-4%
	20 to 24	-34%	-31%	-30%	-24%	-20%	-6%	-2%	-1%	0%	-5%
	25 and over	-37%	-39%	-45%	-44%	-39%	-17%	-10%	-2%	0%	0%

Note: The percentage change is not recorded in the above table for groups with fewer than 10 placed applicants in that cycle or in the 2018 cycle.

C.12 Placed applicants from Wales by age group at 7 days after A level results day

Selected age groups: difference between cycle and 2018 cycle

- 17 and under
- 18
- 19
- 20 to 24
- 25 and over



Note: The percentage change is not plotted in the above chart for groups with fewer than 30 placed applicants in any one cycle.

C.13 Placed applicants from Wales by age group at 7 days after A level results day

All age groups

Domicile of applicant	Age group	2010	2011	2012	2013	2014	2015	2016	2017	2018	2019
Wales	17 and under	30	30	20	30	20	20	20	20	20	20
	18	9,620	9,230	9,600	9,530	9,900	10,330	10,480	10,150	9,990	9,800
	19	3,100	3,280	3,400	3,460	3,600	3,540	3,660	3,440	3,230	3,240
	20 to 24	2,530	2,560	2,800	2,840	2,900	2,850	2,880	2,940	2,650	2,670
	25 and over	1,570	1,580	1,540	1,700	1,870	1,890	1,800	1,860	2,040	1,980

C.14 Placed applicants from Wales by age group at 7 days after A level results day

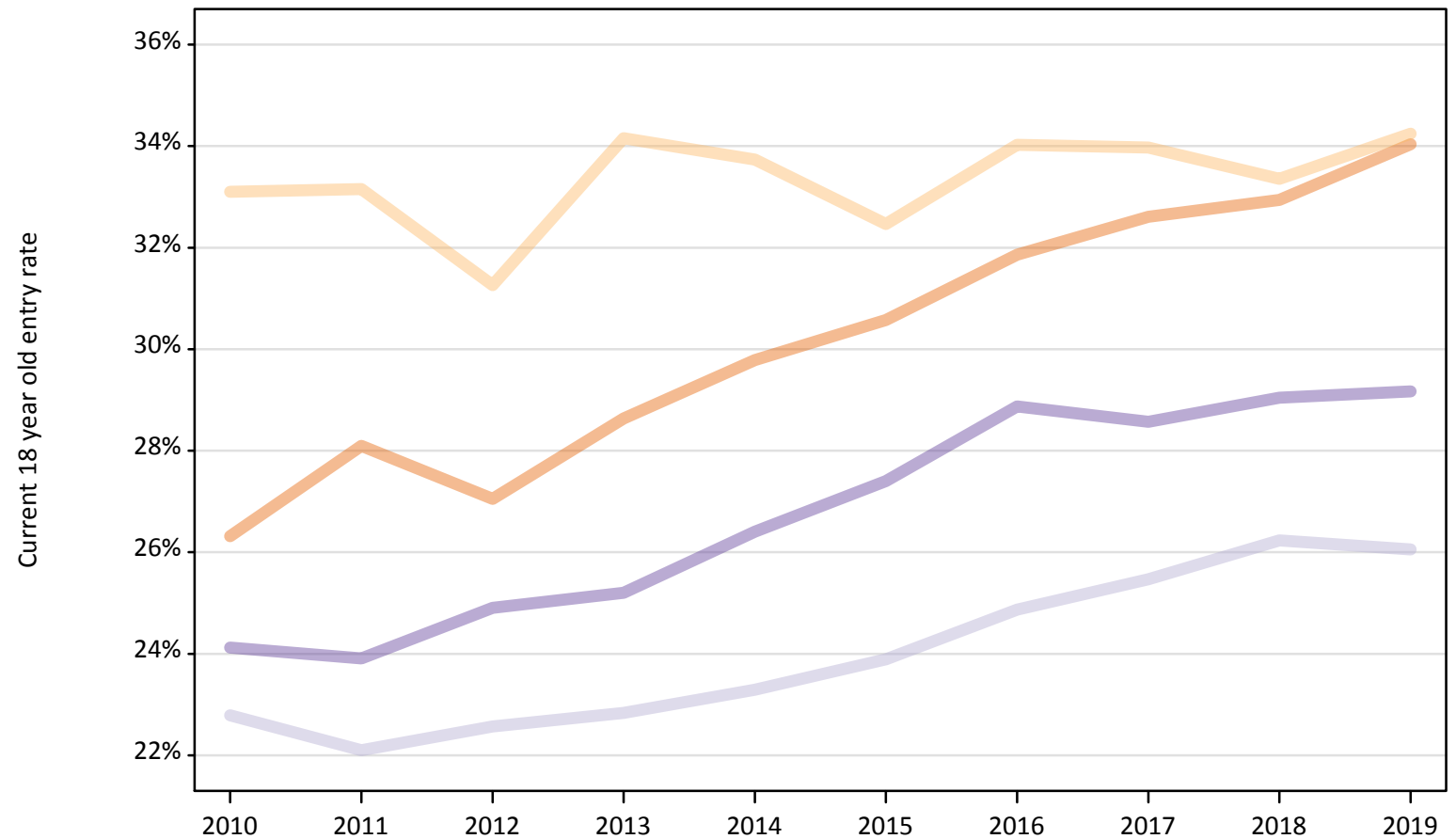
Selected age groups: difference between cycle and 2018 cycle

Domicile of applicant	Age group	2010	2011	2012	2013	2014	2015	2016	2017	2018	2019
Wales	17 and under	42%	33%	-13%	17%	-13%	-25%	0%	-33%	0%	-13%
	18	-4%	-8%	-4%	-5%	-1%	3%	5%	2%	0%	-2%
	19	-4%	1%	5%	7%	11%	10%	13%	6%	0%	0%
	20 to 24	-4%	-3%	6%	7%	10%	8%	9%	11%	0%	1%
	25 and over	-23%	-22%	-24%	-17%	-8%	-7%	-11%	-9%	0%	-3%

Note: The percentage change is not recorded in the above table for groups with fewer than 10 placed applicants in that cycle or in the 2018 cycle.

C.15 Entry rates for 18 year olds by UK country of domicile: 7 days after A level results day

Placed 18 year old applicants as a proportion of the 18 year old population



C.16 Entry rates for 18 year olds by UK country of domicile: 7 days after A level results day

Placed 18 year old applicants as a proportion of the 18 year old population

Domicile of applicant	Age group	2010	2011	2012	2013	2014	2015	2016	2017	2018	2019
England	18	26.3%	28.1%	27.1%	28.6%	29.8%	30.6%	31.9%	32.6%	32.9%	34.0%
Northern Ireland	18	33.1%	33.2%	31.3%	34.2%	33.7%	32.5%	34.0%	34.0%	33.4%	34.2%
Scotland	18	22.8%	22.1%	22.6%	22.8%	23.3%	23.9%	24.9%	25.5%	26.2%	26.1%
Wales	18	24.1%	23.9%	24.9%	25.2%	26.4%	27.4%	28.9%	28.6%	29.0%	29.2%