

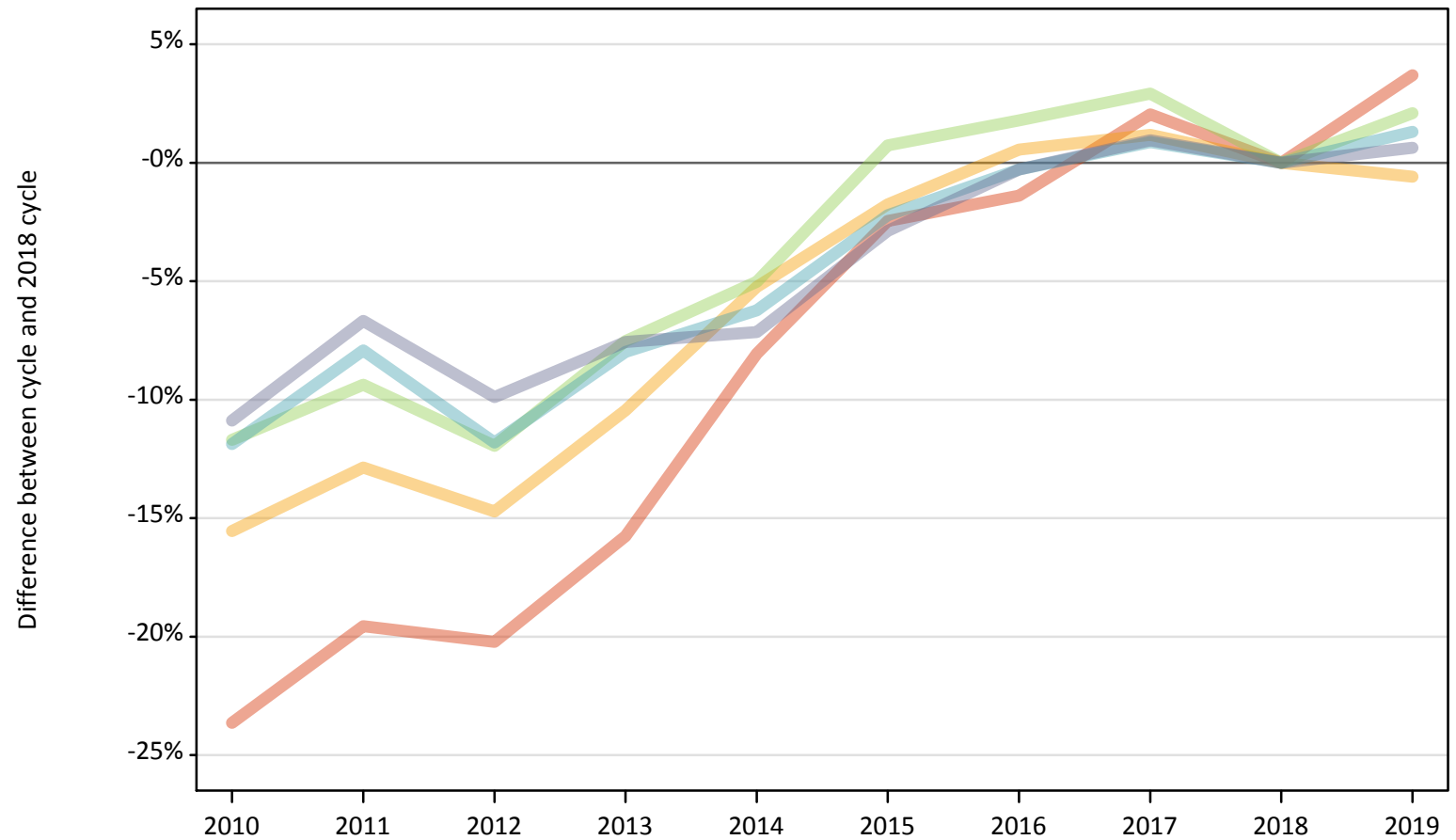
Daily Clearing Analysis: POLAR4

Analysis at 00:05 on Thursday 22 August 2019 (7 days after A level results day)

P.1 Placed 18 year old applicants from England by POLAR4 quintile: 7 days after A level results day

Placed 18 year old applicants: change relative to 2018 cycle totals

- Quintile 1
- Quintile 2
- Quintile 3
- Quintile 4
- Quintile 5



Note: The percentage change is not plotted in the above chart for groups with fewer than 30 placed applicants in any one cycle.

P.2 Placed 18 year old applicants from England by POLAR4 quintile: 7 days after A level results day

Applicant Status	POLAR4	2010	2011	2012	2013	2014	2015	2016	2017	2018	2019
Placed	Quintile 1	16,500	17,380	17,240	18,200	19,870	21,080	21,310	22,050	21,610	22,410
	Quintile 2	25,500	26,300	25,740	27,030	28,610	29,660	30,360	30,540	30,190	30,010
	Quintile 3	32,460	33,310	32,360	33,990	34,910	37,030	37,410	37,830	36,760	37,530
	Quintile 4	40,470	42,280	40,500	42,260	43,060	44,910	45,790	46,320	45,920	46,520
	Quintile 5	58,470	61,230	59,120	60,660	60,930	63,730	65,430	66,240	65,620	66,030

P.3 Placed 18 year old applicants from England by POLAR4 quintile: 7 days after A level results day

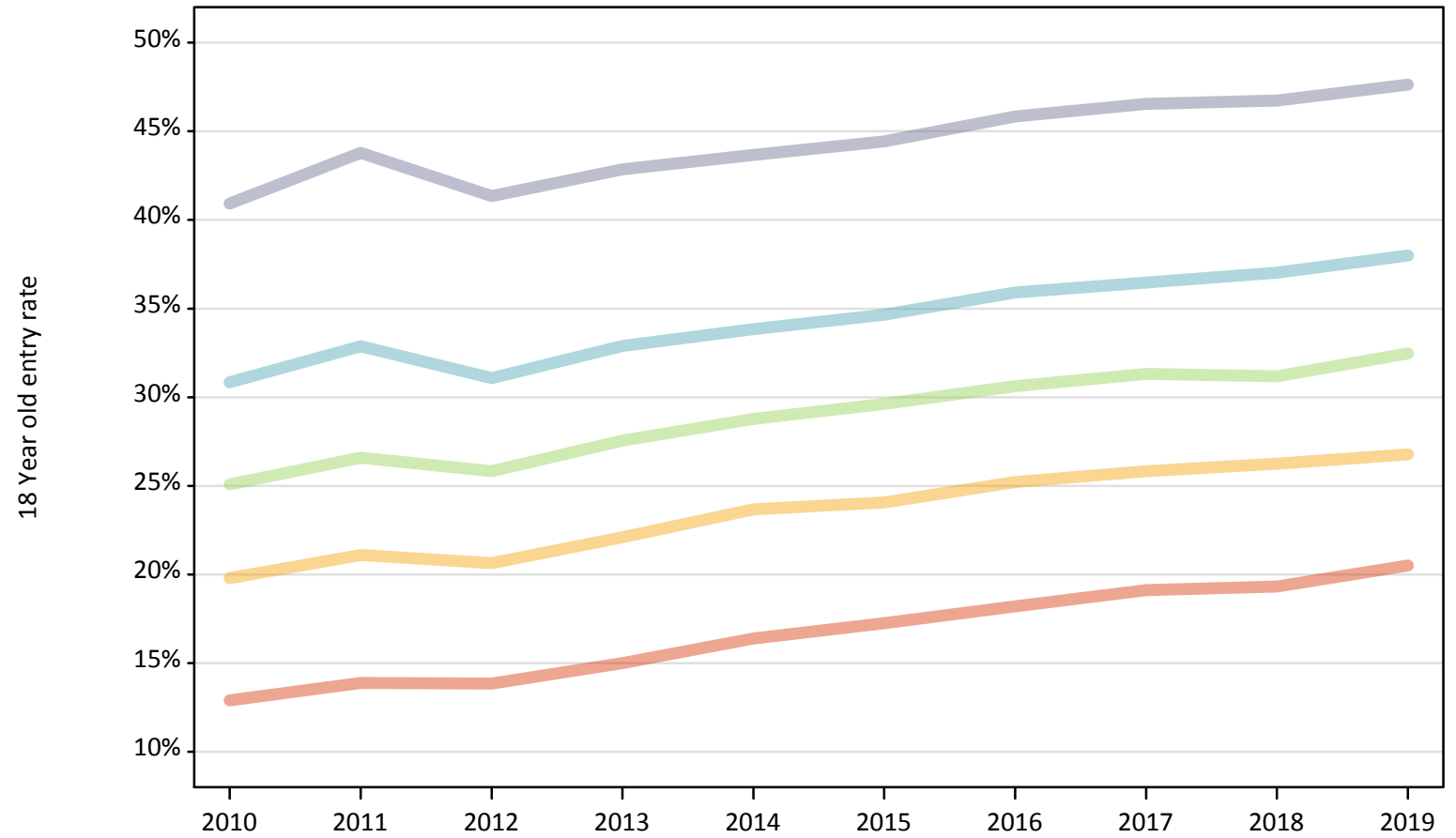
Placed 18 year old applicants: change relative to 2018 cycle totals

Applicant Status	POLAR4	2010	2011	2012	2013	2014	2015	2016	2017	2018	2019
Placed	Quintile 1	-24%	-20%	-20%	-16%	-8%	-2%	-1%	2%	0%	4%
	Quintile 2	-16%	-13%	-15%	-10%	-5%	-2%	1%	1%	0%	-1%
	Quintile 3	-12%	-9%	-12%	-8%	-5%	1%	2%	3%	0%	2%
	Quintile 4	-12%	-8%	-12%	-8%	-6%	-2%	-0%	1%	0%	1%
	Quintile 5	-11%	-7%	-10%	-8%	-7%	-3%	-0%	1%	0%	1%

Note: The percentage change is not recorded in the above table for groups with fewer than 10 placed applicants in that cycle or in the 2018 cycle.

P.4 Placed 18 year old applicants from England by POLAR4 quintile: 7 days after A level results day
Placed 18 year old applicants: entry rate

- Quintile 1
- Quintile 2
- Quintile 3
- Quintile 4
- Quintile 5



P.5 Placed 18 year old applicants from England by POLAR4 quintile: 7 days after A level results day

Placed 18 year old applicants: entry rate

Applicant Status	POLAR4	2010	2011	2012	2013	2014	2015	2016	2017	2018	2019
Placed	Quintile 1	12.9%	13.9%	13.9%	15.0%	16.4%	17.2%	18.2%	19.1%	19.3%	20.5%
	Quintile 2	19.8%	21.1%	20.6%	22.1%	23.7%	24.1%	25.2%	25.8%	26.3%	26.8%
	Quintile 3	25.1%	26.6%	25.8%	27.6%	28.8%	29.6%	30.6%	31.3%	31.2%	32.5%
	Quintile 4	30.8%	32.9%	31.1%	32.9%	33.8%	34.7%	35.9%	36.5%	37.0%	38.0%
	Quintile 5	40.9%	43.8%	41.3%	42.9%	43.7%	44.4%	45.8%	46.5%	46.7%	47.6%

P.6 Placed 18 year old applicants from England by POLAR4 quintile: 7 days after A level results day

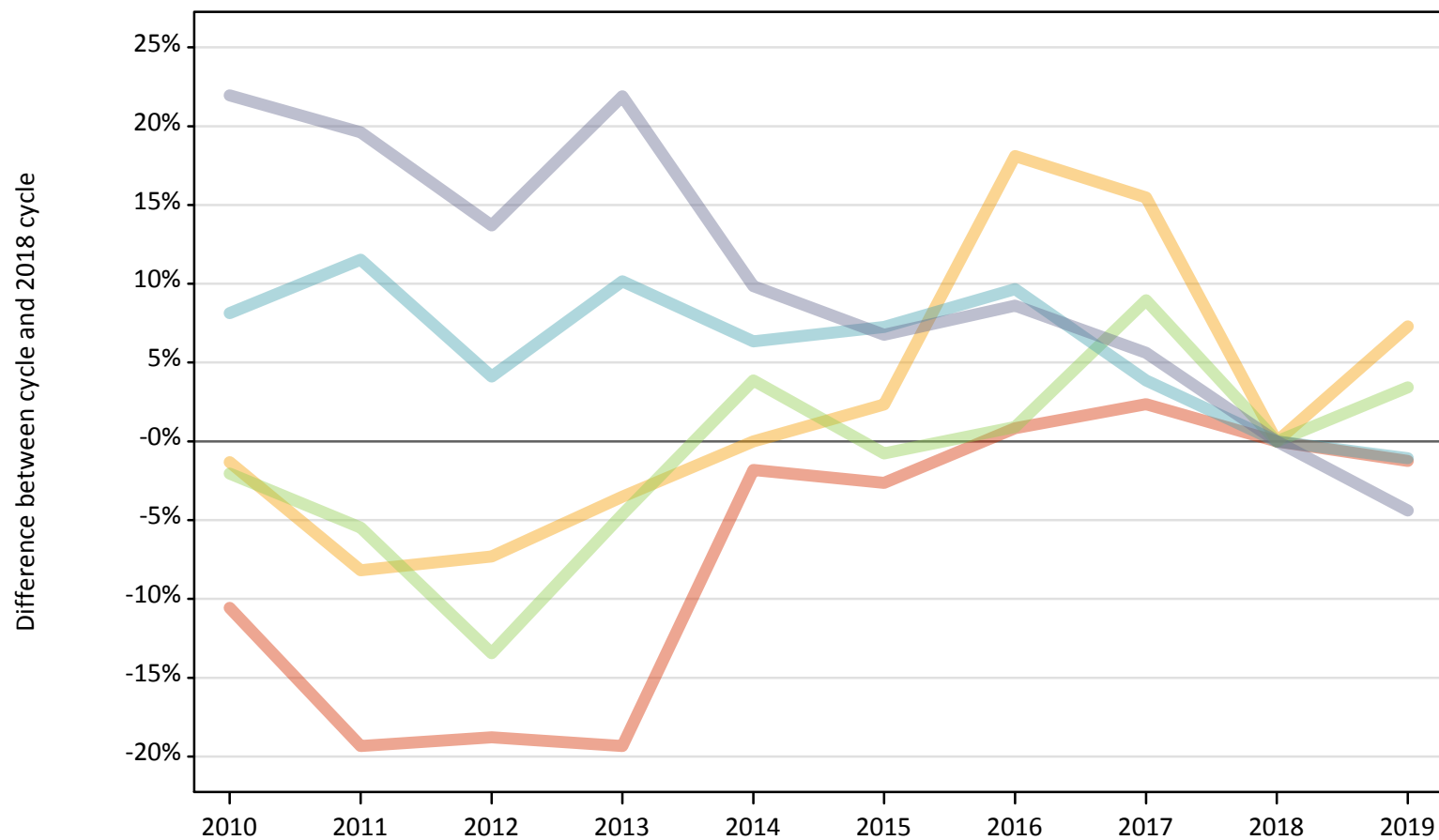
Placed 18 year old applicants: entry rate (indexed to 100 = Quintile 1)

Applicant Status	POLAR4	2010	2011	2012	2013	2014	2015	2016	2017	2018	2019
Placed	Quintile 1	100	100	100	100	100	100	100	100	100	100
	Quintile 2	153	152	149	147	144	140	139	135	136	130
	Quintile 3	194	192	186	184	176	172	168	164	161	158
	Quintile 4	239	237	224	219	206	201	197	191	192	185
	Quintile 5	317	315	298	286	266	258	252	244	242	232

P.7 Placed 18 year old applicants from Northern Ireland by POLAR4 quintile: 7 days after A level results day

Placed 18 year old applicants: change relative to 2018 cycle totals

- Quintile 1
- Quintile 2
- Quintile 3
- Quintile 4
- Quintile 5



Note: The percentage change is not plotted in the above chart for groups with fewer than 30 placed applicants in any one cycle.

P.8 Placed 18 year old applicants from Northern Ireland by POLAR4 quintile: 7 days after A level results day

Applicant Status	POLAR4	2010	2011	2012	2013	2014	2015	2016	2017	2018	2019
Placed	Quintile 1	640	580	580	580	710	700	730	740	720	710
	Quintile 2	680	630	640	660	690	700	810	790	690	740
	Quintile 3	1,290	1,250	1,140	1,260	1,370	1,310	1,330	1,440	1,320	1,360
	Quintile 4	2,130	2,200	2,050	2,170	2,090	2,110	2,160	2,040	1,970	1,950
	Quintile 5	3,690	3,620	3,440	3,690	3,330	3,230	3,290	3,200	3,030	2,900

P.9 Placed 18 year old applicants from Northern Ireland by POLAR4 quintile: 7 days after A level results day

Placed 18 year old applicants: change relative to 2018 cycle totals

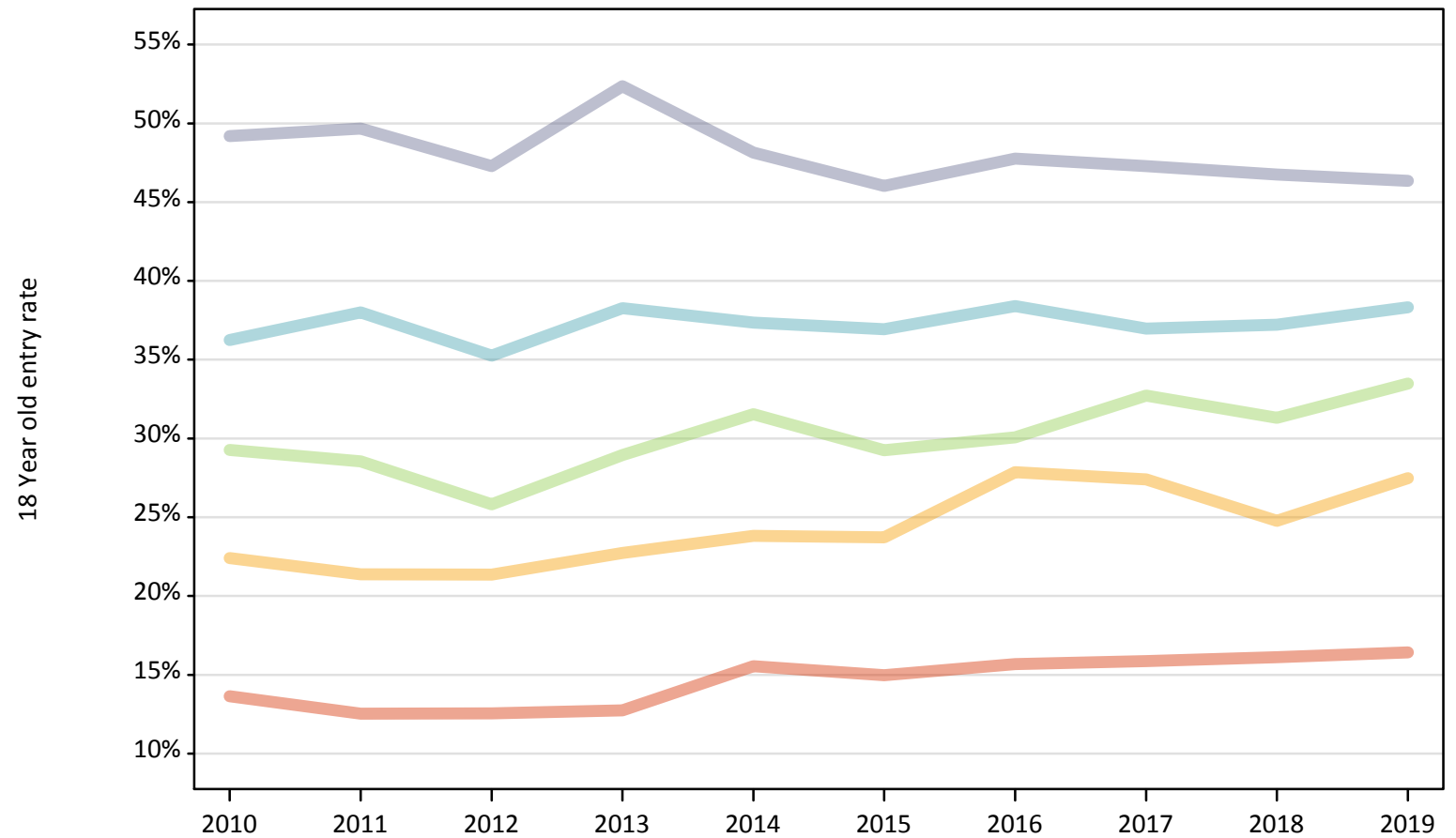
Applicant Status	POLAR4	2010	2011	2012	2013	2014	2015	2016	2017	2018	2019
Placed	Quintile 1	-11%	-19%	-19%	-19%	-2%	-3%	1%	2%	0%	-1%
	Quintile 2	-1%	-8%	-7%	-4%	0%	2%	18%	15%	0%	7%
	Quintile 3	-2%	-5%	-13%	-5%	4%	-1%	1%	9%	0%	3%
	Quintile 4	8%	12%	4%	10%	6%	7%	10%	4%	0%	-1%
	Quintile 5	22%	20%	14%	22%	10%	7%	9%	6%	0%	-4%

Note: The percentage change is not recorded in the above table for groups with fewer than 10 placed applicants in that cycle or in the 2018 cycle.

P.10 Placed 18 year old applicants from Northern Ireland by POLAR4 quintile: 7 days after A level results day

Placed 18 year old applicants: entry rate

- Quintile 1
- Quintile 2
- Quintile 3
- Quintile 4
- Quintile 5



P.11 Placed 18 year old applicants from Northern Ireland by POLAR4 quintile: 7 days after A level results day

Placed 18 year old applicants: entry rate

Applicant Status	POLAR4	2010	2011	2012	2013	2014	2015	2016	2017	2018	2019
Placed	Quintile 1	13.6%	12.5%	12.5%	12.7%	15.5%	15.0%	15.7%	15.9%	16.1%	16.4%
	Quintile 2	22.4%	21.4%	21.4%	22.7%	23.8%	23.7%	27.9%	27.4%	24.8%	27.5%
	Quintile 3	29.3%	28.6%	25.8%	29.0%	31.5%	29.2%	30.1%	32.7%	31.3%	33.5%
	Quintile 4	36.3%	38.0%	35.3%	38.3%	37.3%	36.9%	38.4%	37.0%	37.2%	38.3%
	Quintile 5	49.2%	49.7%	47.3%	52.4%	48.1%	46.0%	47.8%	47.3%	46.7%	46.4%

P.12 Placed 18 year old applicants from Northern Ireland by POLAR4 quintile: 7 days after A level results day

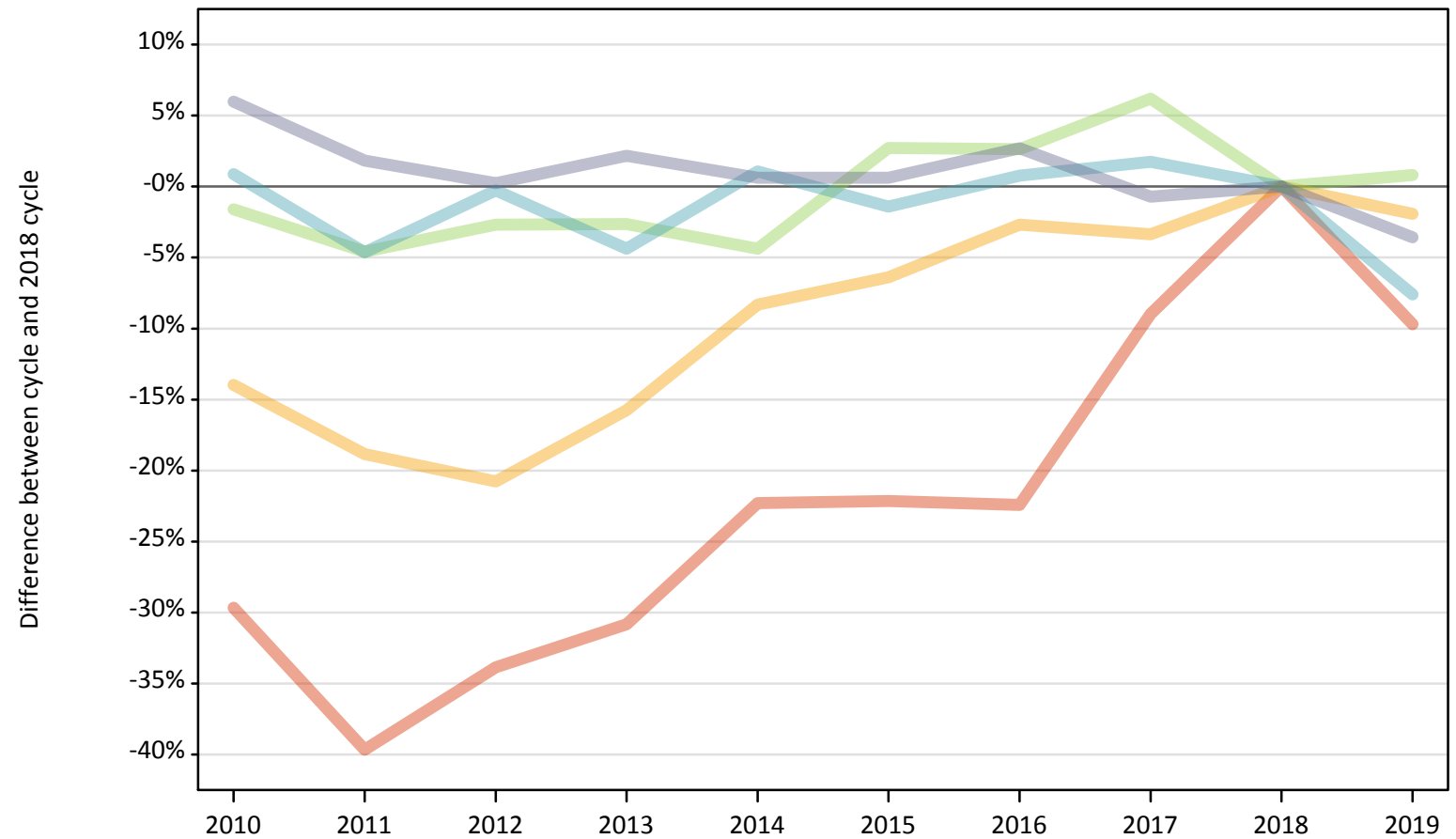
Placed 18 year old applicants: entry rate (indexed to 100 = Quintile 1)

Applicant Status	POLAR4	2010	2011	2012	2013	2014	2015	2016	2017	2018	2019
Placed	Quintile 1	100	100	100	100	100	100	100	100	100	100
	Quintile 2	164	171	170	178	153	158	178	173	154	167
	Quintile 3	214	228	206	227	203	195	192	206	194	204
	Quintile 4	266	303	281	300	240	247	245	233	231	233
	Quintile 5	360	396	377	411	310	307	305	298	290	282

P.13 Placed 18 year old applicants from Scotland by POLAR4 quintile: 7 days after A level results day

Placed 18 year old applicants: change relative to 2018 cycle totals

- Quintile 1
- Quintile 2
- Quintile 3
- Quintile 4
- Quintile 5



Note: The percentage change is not plotted in the above chart for groups with fewer than 30 placed applicants in any one cycle.

P.14 Placed 18 year old applicants from Scotland by POLAR4 quintile: 7 days after A level results day

Applicant Status	POLAR4	2010	2011	2012	2013	2014	2015	2016	2017	2018	2019
Placed	Quintile 1	490	420	460	480	540	540	540	630	690	620
	Quintile 2	1,250	1,180	1,150	1,230	1,330	1,360	1,420	1,410	1,450	1,430
	Quintile 3	2,210	2,140	2,180	2,190	2,150	2,310	2,300	2,380	2,240	2,260
	Quintile 4	3,370	3,190	3,330	3,200	3,380	3,300	3,370	3,400	3,340	3,090
	Quintile 5	7,210	6,930	6,820	6,950	6,850	6,850	6,990	6,760	6,810	6,560

P.15 Placed 18 year old applicants from Scotland by POLAR4 quintile: 7 days after A level results day

Placed 18 year old applicants: change relative to 2018 cycle totals

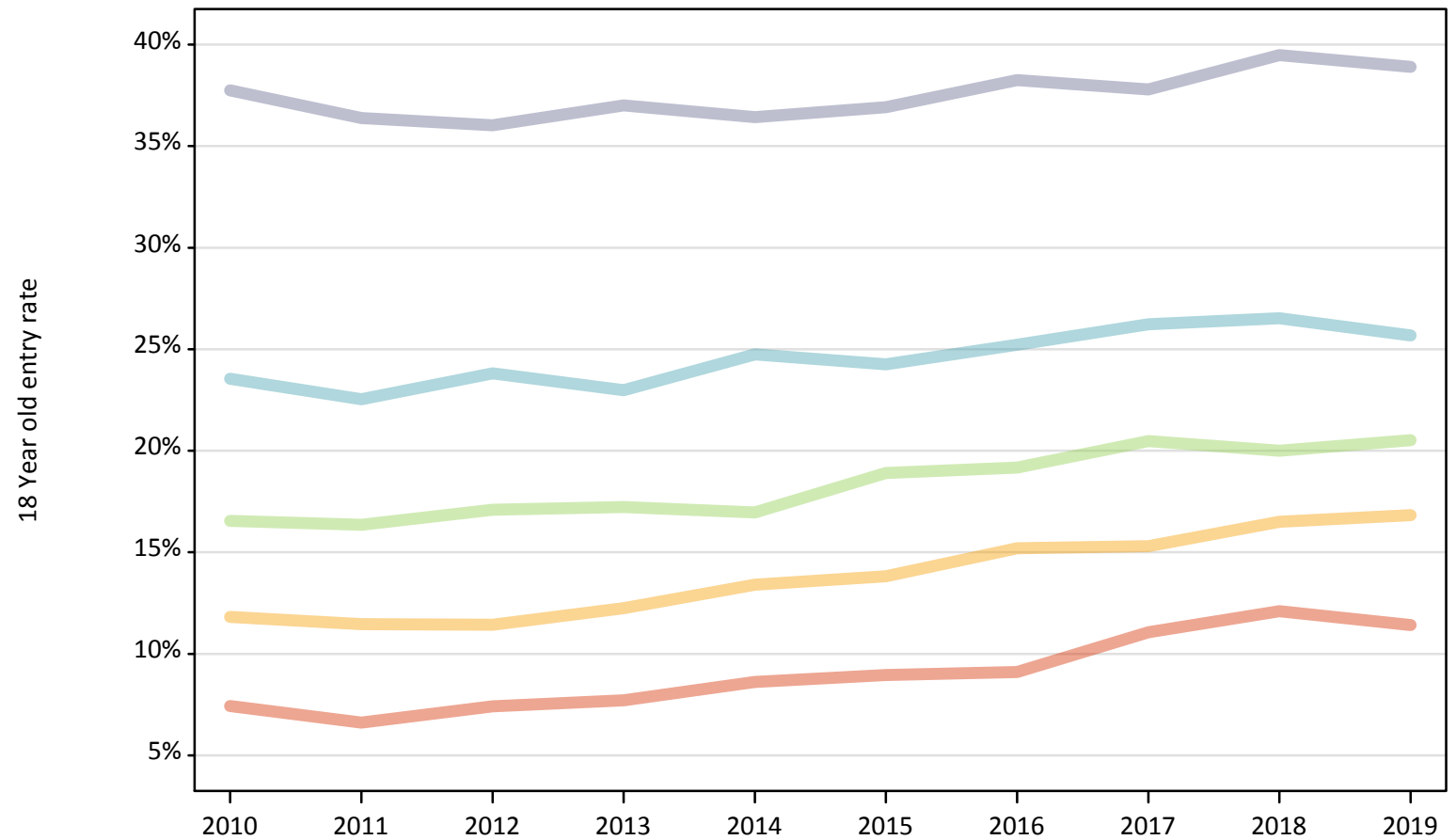
Applicant Status	POLAR4	2010	2011	2012	2013	2014	2015	2016	2017	2018	2019
Placed	Quintile 1	-30%	-40%	-34%	-31%	-22%	-22%	-22%	-9%	0%	-10%
	Quintile 2	-14%	-19%	-21%	-16%	-8%	-6%	-3%	-3%	0%	-2%
	Quintile 3	-2%	-5%	-3%	-3%	-4%	3%	3%	6%	0%	1%
	Quintile 4	1%	-5%	-0%	-4%	1%	-1%	1%	2%	0%	-8%
	Quintile 5	6%	2%	0%	2%	1%	1%	3%	-1%	0%	-4%

Note: The percentage change is not recorded in the above table for groups with fewer than 10 placed applicants in that cycle or in the 2018 cycle.

P.16 Placed 18 year old applicants from Scotland by POLAR4 quintile: 7 days after A level results day

Placed 18 year old applicants: entry rate

- Quintile 1
- Quintile 2
- Quintile 3
- Quintile 4
- Quintile 5



P.17 Placed 18 year old applicants from Scotland by POLAR4 quintile: 7 days after A level results day

Placed 18 year old applicants: entry rate

Applicant Status	POLAR4	2010	2011	2012	2013	2014	2015	2016	2017	2018	2019
Placed	Quintile 1	7.4%	6.6%	7.4%	7.7%	8.6%	9.0%	9.1%	11.1%	12.1%	11.4%
	Quintile 2	11.8%	11.5%	11.4%	12.2%	13.4%	13.8%	15.2%	15.3%	16.5%	16.8%
	Quintile 3	16.5%	16.4%	17.1%	17.2%	17.0%	18.9%	19.2%	20.5%	20.0%	20.5%
	Quintile 4	23.5%	22.5%	23.8%	23.0%	24.7%	24.3%	25.2%	26.2%	26.5%	25.7%
	Quintile 5	37.7%	36.4%	36.0%	37.0%	36.4%	36.9%	38.3%	37.8%	39.5%	38.9%

P.18 Placed 18 year old applicants from Scotland by POLAR4 quintile: 7 days after A level results day

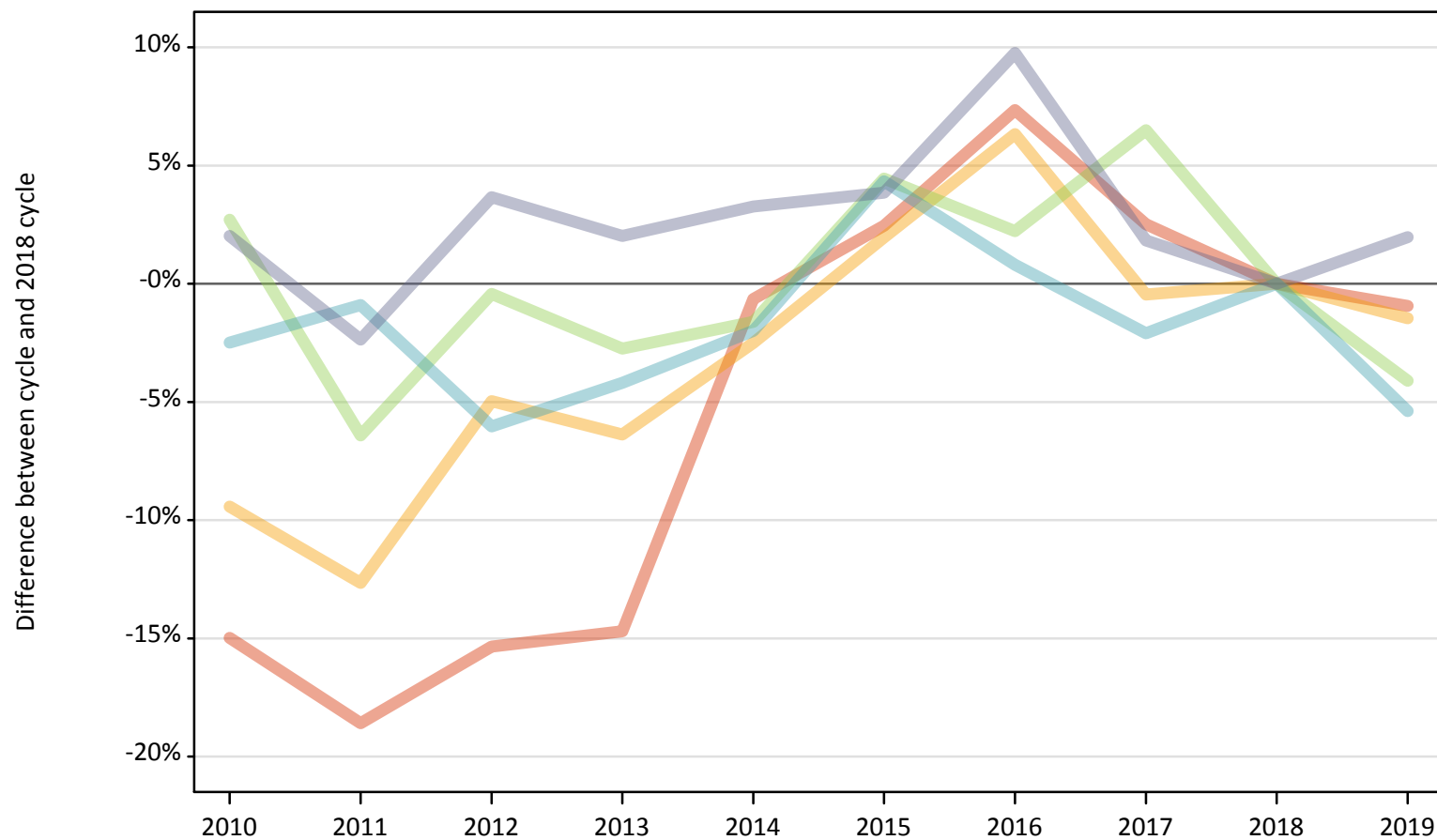
Placed 18 year old applicants: entry rate (indexed to 100 = Quintile 1)

Applicant Status	POLAR4	2010	2011	2012	2013	2014	2015	2016	2017	2018	2019
Placed	Quintile 1	100	100	100	100	100	100	100	100	100	100
	Quintile 2	159	173	154	159	155	154	167	138	136	147
	Quintile 3	223	247	230	224	197	211	211	185	165	180
	Quintile 4	317	341	321	298	287	271	277	237	219	225
	Quintile 5	508	550	486	480	422	412	420	342	326	341

P.19 Placed 18 year old applicants from Wales by POLAR4 quintile: 7 days after A level results day

Placed 18 year old applicants: change relative to 2018 cycle totals

- Quintile 1
- Quintile 2
- Quintile 3
- Quintile 4
- Quintile 5



Note: The percentage change is not plotted in the above chart for groups with fewer than 30 placed applicants in any one cycle.

P.20 Placed 18 year old applicants from Wales by POLAR4 quintile: 7 days after A level results day

Applicant Status	POLAR4	2010	2011	2012	2013	2014	2015	2016	2017	2018	2019
Placed	Quintile 1	1,180	1,130	1,180	1,180	1,380	1,420	1,490	1,420	1,390	1,380
	Quintile 2	1,990	1,920	2,090	2,060	2,140	2,240	2,340	2,190	2,200	2,160
	Quintile 3	2,350	2,150	2,280	2,230	2,260	2,390	2,340	2,440	2,290	2,200
	Quintile 4	1,960	1,990	1,890	1,920	1,970	2,090	2,020	1,960	2,010	1,900
	Quintile 5	2,120	2,030	2,160	2,120	2,150	2,160	2,280	2,120	2,080	2,120

P.21 Placed 18 year old applicants from Wales by POLAR4 quintile: 7 days after A level results day

Placed 18 year old applicants: change relative to 2018 cycle totals

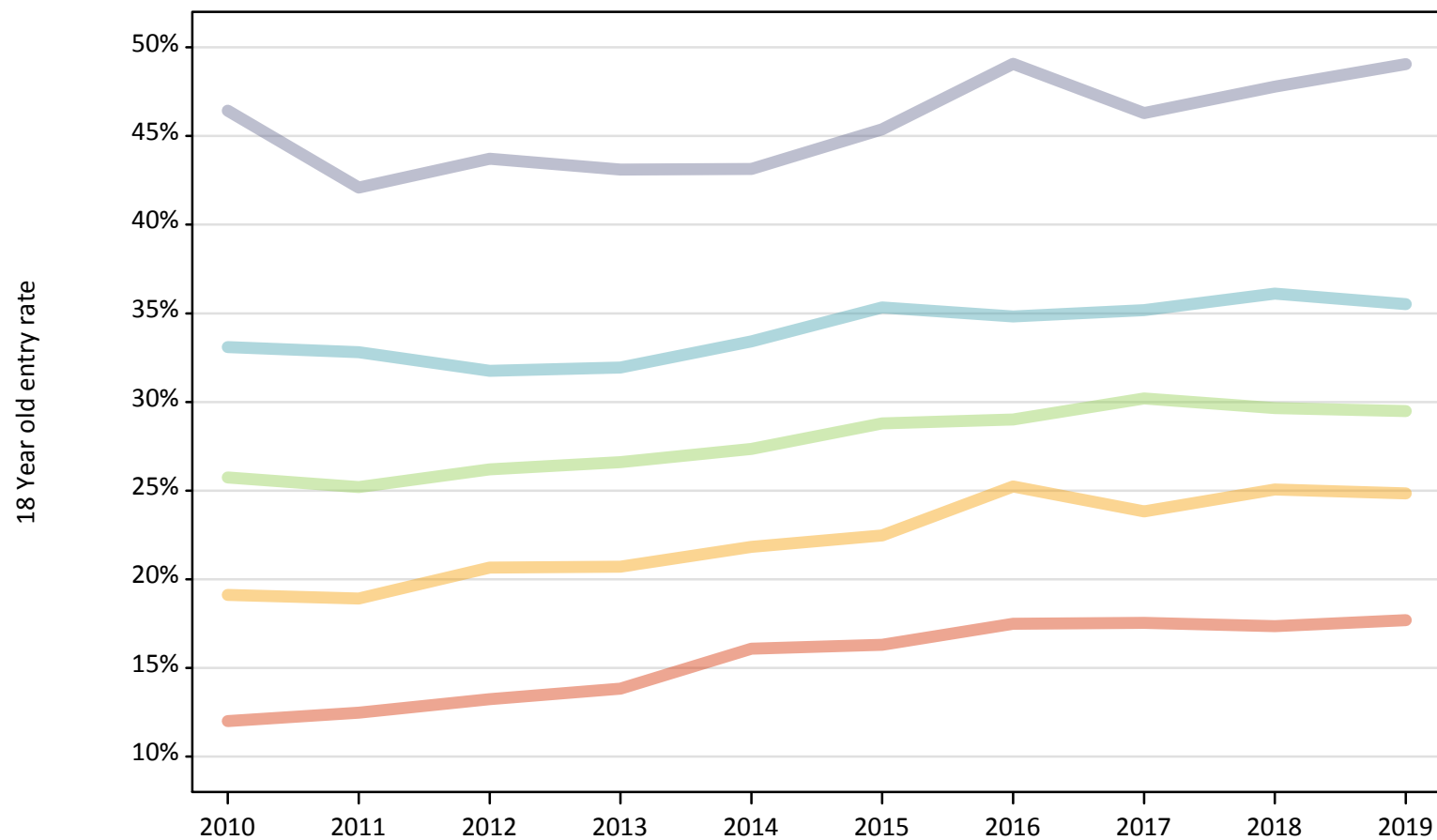
Applicant Status	POLAR4	2010	2011	2012	2013	2014	2015	2016	2017	2018	2019
Placed	Quintile 1	-15%	-19%	-15%	-15%	-1%	2%	7%	3%	0%	-1%
	Quintile 2	-9%	-13%	-5%	-6%	-3%	2%	6%	-0%	0%	-1%
	Quintile 3	3%	-6%	-0%	-3%	-2%	4%	2%	7%	0%	-4%
	Quintile 4	-2%	-1%	-6%	-4%	-2%	4%	1%	-2%	0%	-5%
	Quintile 5	2%	-2%	4%	2%	3%	4%	10%	2%	0%	2%

Note: The percentage change is not recorded in the above table for groups with fewer than 10 placed applicants in that cycle or in the 2018 cycle.

P.22 Placed 18 year old applicants from Wales by POLAR4 quintile: 7 days after A level results day

Placed 18 year old applicants: entry rate

- Quintile 1
- Quintile 2
- Quintile 3
- Quintile 4
- Quintile 5



P.23 Placed 18 year old applicants from Wales by POLAR4 quintile: 7 days after A level results day

Placed 18 year old applicants: entry rate

Applicant Status	POLAR4	2010	2011	2012	2013	2014	2015	2016	2017	2018	2019
Placed	Quintile 1	12.0%	12.5%	13.2%	13.8%	16.1%	16.3%	17.5%	17.5%	17.3%	17.7%
	Quintile 2	19.1%	18.9%	20.7%	20.7%	21.8%	22.5%	25.2%	23.8%	25.1%	24.8%
	Quintile 3	25.7%	25.2%	26.2%	26.6%	27.3%	28.8%	29.0%	30.2%	29.6%	29.5%
	Quintile 4	33.1%	32.8%	31.7%	31.9%	33.4%	35.3%	34.8%	35.2%	36.1%	35.5%
	Quintile 5	46.4%	42.1%	43.7%	43.1%	43.1%	45.4%	49.1%	46.3%	47.8%	49.1%

P.24 Placed 18 year old applicants from Wales by POLAR4 quintile: 7 days after A level results day

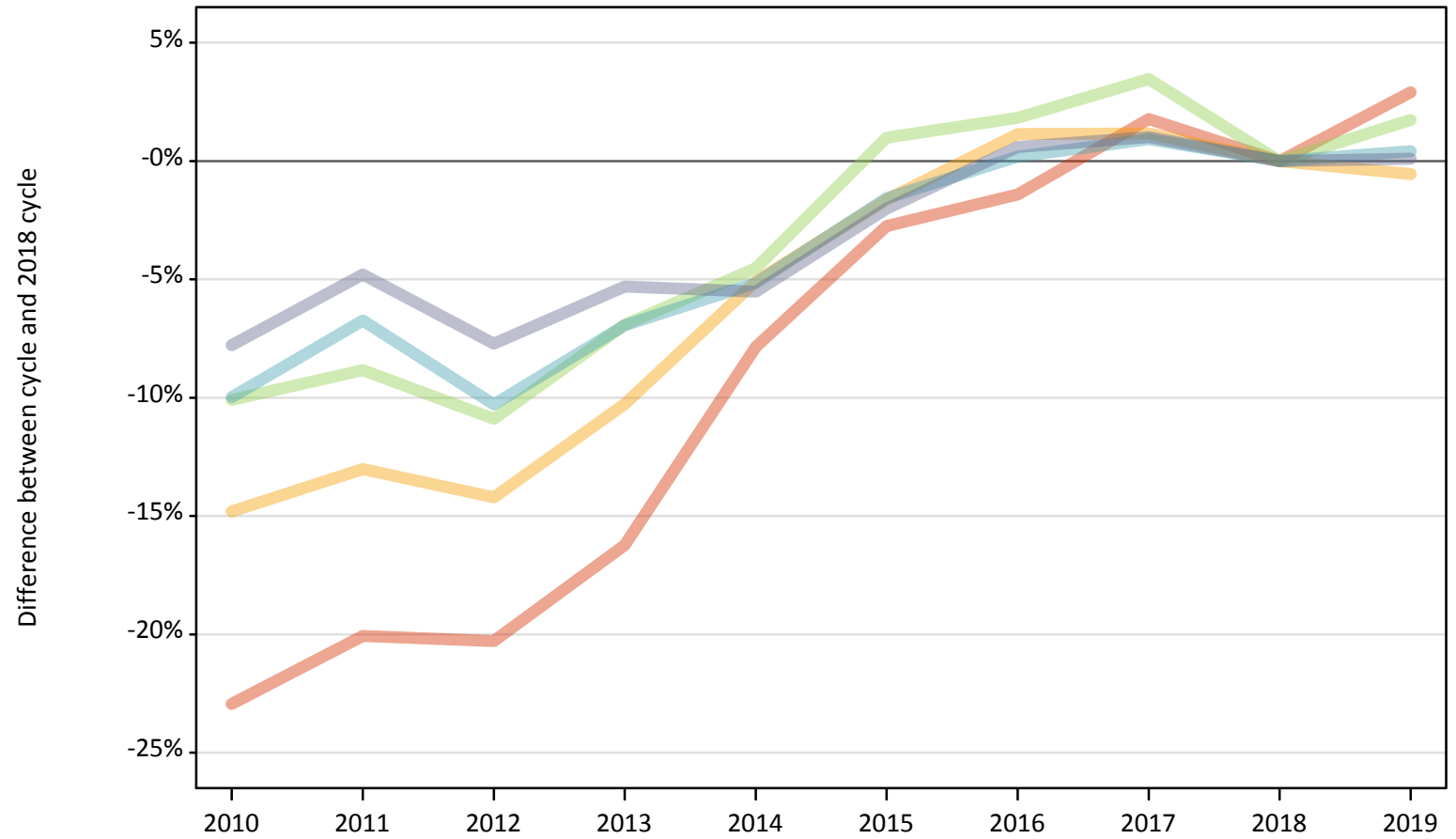
Placed 18 year old applicants: entry rate (indexed to 100 = Quintile 1)

Applicant Status	POLAR4	2010	2011	2012	2013	2014	2015	2016	2017	2018	2019
Placed	Quintile 1	100	100	100	100	100	100	100	100	100	100
	Quintile 2	159	152	156	150	136	138	144	136	144	140
	Quintile 3	215	202	198	193	170	177	166	172	171	167
	Quintile 4	276	263	240	231	208	217	199	201	208	201
	Quintile 5	387	337	330	312	268	278	281	264	275	277

P.25 Placed 18 year old applicants from the UK by POLAR4 quintile: 7 days after A level results day

Placed 18 year old applicants: change relative to 2018 cycle totals

- Quintile 1
- Quintile 2
- Quintile 3
- Quintile 4
- Quintile 5



Note: The percentage change is not plotted in the above chart for groups with fewer than 30 placed applicants in any one cycle.

P.26 Placed 18 year old applicants from the UK by POLAR4 quintile: 7 days after A level results day

Applicant Status	POLAR4	2010	2011	2012	2013	2014	2015	2016	2017	2018	2019
Placed	Quintile 1	18,810	19,510	19,460	20,450	22,490	23,740	24,060	24,840	24,410	25,120
	Quintile 2	29,410	30,030	29,620	30,970	32,770	33,960	34,910	34,920	34,520	34,330
	Quintile 3	38,310	38,850	37,970	39,660	40,680	43,030	43,390	44,090	42,610	43,350
	Quintile 4	47,930	49,650	47,760	49,540	50,500	52,400	53,340	53,730	53,240	53,460
	Quintile 5	71,500	73,810	71,540	73,420	73,250	75,970	77,990	78,310	77,530	77,610

P.27 Placed 18 year old applicants from the UK by POLAR4 quintile: 7 days after A level results day

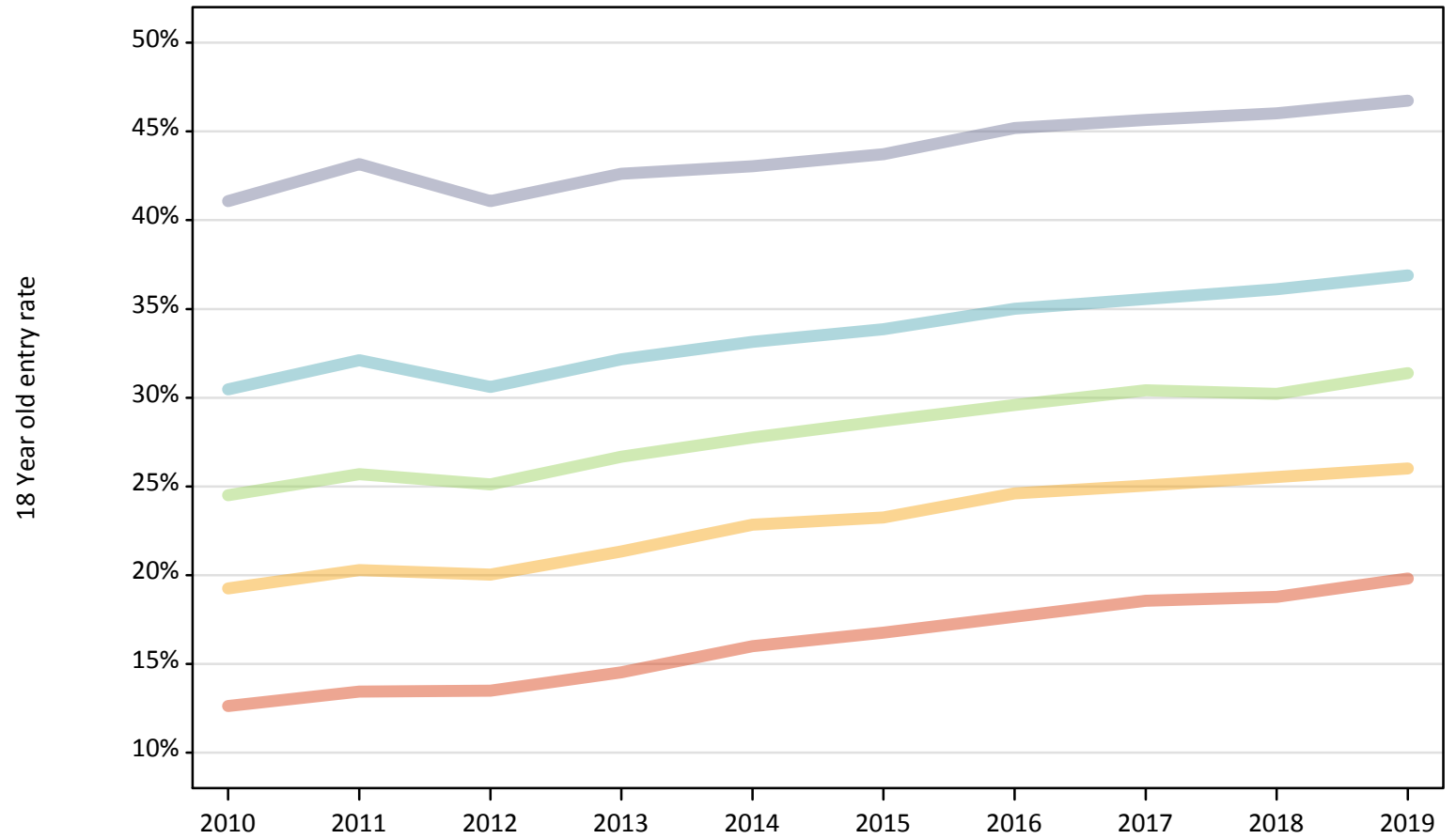
Placed 18 year old applicants: change relative to 2018 cycle totals

Applicant Status	POLAR4	2010	2011	2012	2013	2014	2015	2016	2017	2018	2019
Placed	Quintile 1	-23%	-20%	-20%	-16%	-8%	-3%	-1%	2%	0%	3%
	Quintile 2	-15%	-13%	-14%	-10%	-5%	-2%	1%	1%	0%	-1%
	Quintile 3	-10%	-9%	-11%	-7%	-5%	1%	2%	3%	0%	2%
	Quintile 4	-10%	-7%	-10%	-7%	-5%	-2%	0%	1%	0%	0%
	Quintile 5	-8%	-5%	-8%	-5%	-6%	-2%	1%	1%	0%	0%

Note: The percentage change is not recorded in the above table for groups with fewer than 10 placed applicants in that cycle or in the 2018 cycle.

P.28 Placed 18 year old applicants from the UK by POLAR4 quintile: 7 days after A level results day
Placed 18 year old applicants: entry rate

- Quintile 1
- Quintile 2
- Quintile 3
- Quintile 4
- Quintile 5



P.29 Placed 18 year old applicants from the UK by POLAR4 quintile: 7 days after A level results day

Placed 18 year old applicants: entry rate

Applicant Status	POLAR4	2010	2011	2012	2013	2014	2015	2016	2017	2018	2019
Placed	Quintile 1	12.6%	13.4%	13.5%	14.5%	16.0%	16.8%	17.7%	18.6%	18.8%	19.8%
	Quintile 2	19.2%	20.3%	20.0%	21.3%	22.8%	23.3%	24.6%	25.0%	25.5%	26.0%
	Quintile 3	24.5%	25.7%	25.1%	26.7%	27.8%	28.7%	29.6%	30.4%	30.2%	31.4%
	Quintile 4	30.5%	32.1%	30.6%	32.2%	33.1%	33.9%	35.0%	35.5%	36.1%	36.9%
	Quintile 5	41.1%	43.2%	41.1%	42.6%	43.0%	43.7%	45.2%	45.7%	46.0%	46.7%

P.30 Placed 18 year old applicants from the UK by POLAR4 quintile: 7 days after A level results day

Placed 18 year old applicants: entry rate (indexed to 100 = Quintile 1)

Applicant Status	POLAR4	2010	2011	2012	2013	2014	2015	2016	2017	2018	2019
Placed	Quintile 1	100	100	100	100	100	100	100	100	100	100
	Quintile 2	152	151	148	147	143	139	139	135	136	131
	Quintile 3	194	191	186	184	174	171	167	164	161	158
	Quintile 4	241	239	227	221	207	202	198	192	192	186
	Quintile 5	325	321	304	293	269	261	256	246	245	236