

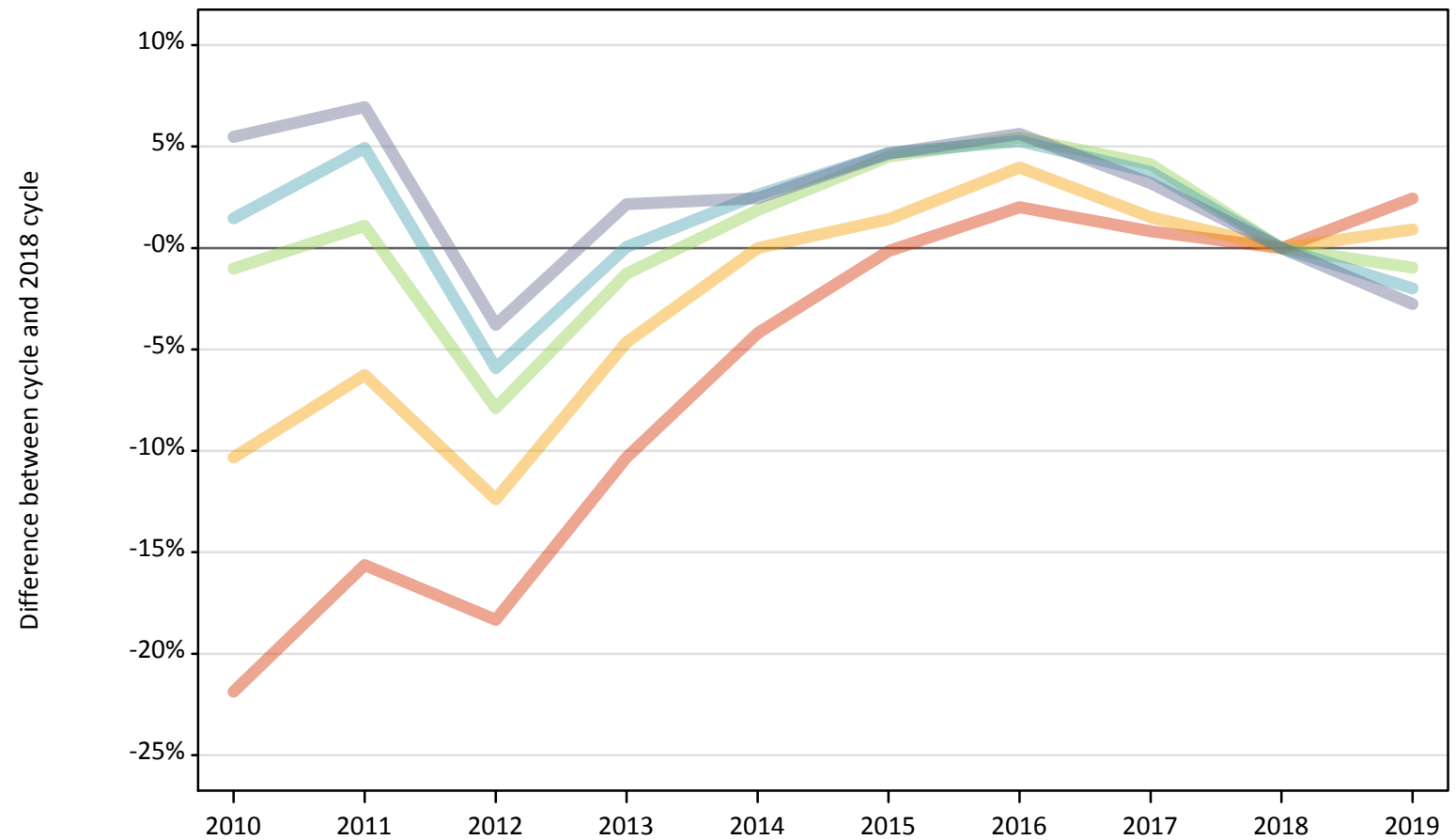
Daily Clearing Analysis: IMD2015

Analysis at 00:05 on Thursday 22 August 2019 (7 days after A level results day)

J.1 Placed applicants from England by IMD2015 quintile: 7 days after A level results day

Placed applicants: change relative to 2018 cycle totals

- Quintile 1
- Quintile 2
- Quintile 3
- Quintile 4
- Quintile 5



Note: The percentage change is not plotted in the above chart for groups with fewer than 30 placed applicants in any one cycle.

J.2 Placed applicants from England by IMD2015 quintile: 7 days after A level results day

Applicant Status IMD2015		2010	2011	2012	2013	2014	2015	2016	2017	2018	2019
Placed	Quintile 1	49,000	52,910	51,220	56,240	60,080	62,610	63,980	63,230	62,710	64,240
	Quintile 2	55,270	57,770	54,000	58,770	61,630	62,510	64,080	62,570	61,630	62,200
	Quintile 3	62,830	64,170	58,470	62,680	64,660	66,340	66,930	66,110	63,480	62,860
	Quintile 4	70,830	73,260	65,670	69,850	71,640	73,080	73,490	72,430	69,810	68,430
	Quintile 5	86,950	88,150	79,310	84,210	84,460	86,260	87,060	85,070	82,430	80,150

J.3 Placed applicants from England by IMD2015 quintile: 7 days after A level results day

Placed applicants: change relative to 2018 cycle totals

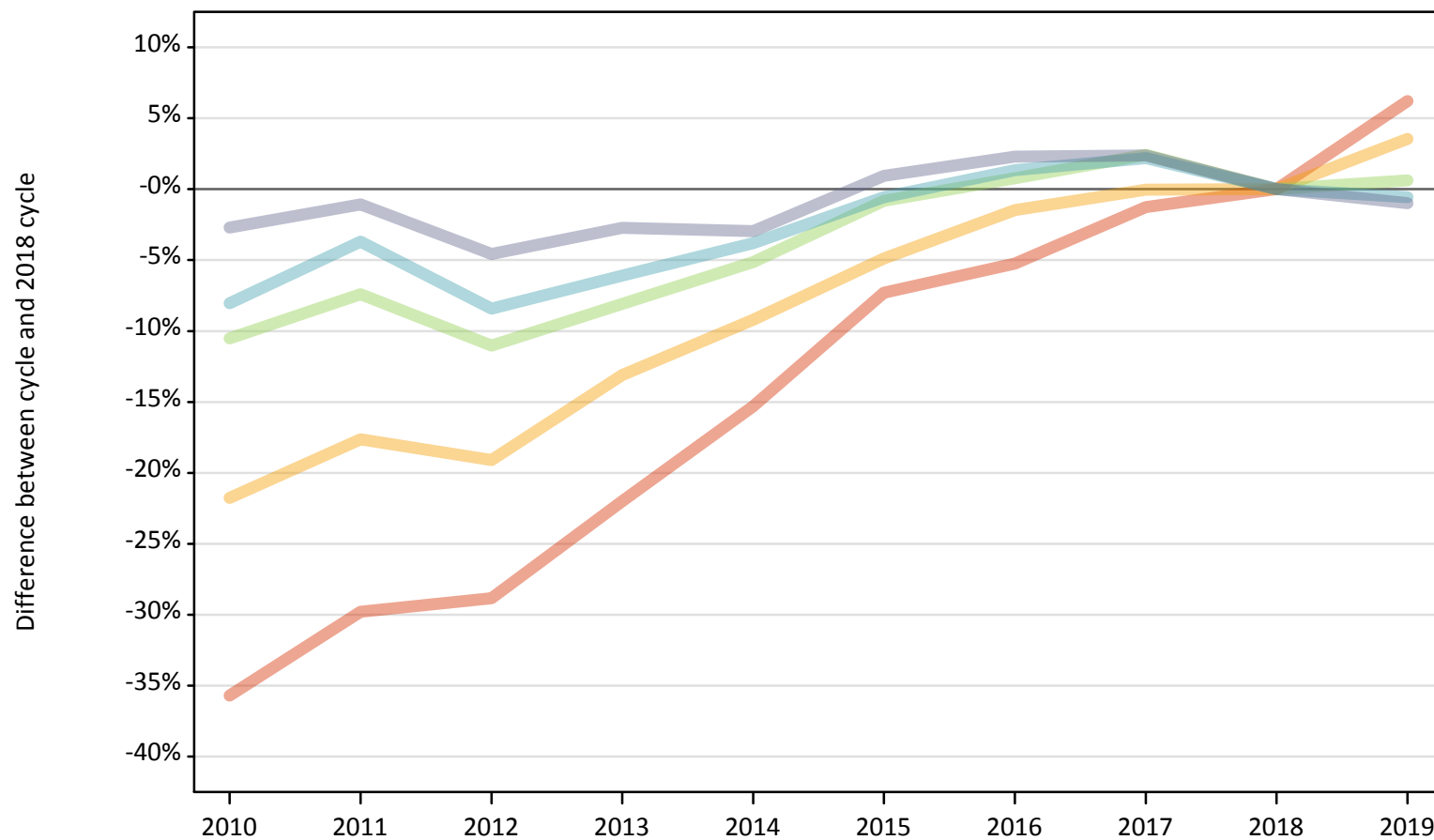
Applicant Status IMD2015		2010	2011	2012	2013	2014	2015	2016	2017	2018	2019
Placed	Quintile 1	-22%	-16%	-18%	-10%	-4%	-0%	2%	1%	0%	2%
	Quintile 2	-10%	-6%	-12%	-5%	0%	1%	4%	2%	0%	1%
	Quintile 3	-1%	1%	-8%	-1%	2%	5%	5%	4%	0%	-1%
	Quintile 4	1%	5%	-6%	0%	3%	5%	5%	4%	0%	-2%
	Quintile 5	5%	7%	-4%	2%	2%	5%	6%	3%	0%	-3%

Note: The percentage change is not recorded in the above table for groups with fewer than 10 placed applicants in that cycle or in the 2018 cycle.

J.4 Placed 18 year old applicants from England by IMD2015 quintile: 7 days after A level results day

Placed 18 year old applicants: change relative to 2018 cycle totals

- Quintile 1
- Quintile 2
- Quintile 3
- Quintile 4
- Quintile 5



Note: The percentage change is not plotted in the above chart for groups with fewer than 30 placed applicants in any one cycle.

J.5 Placed 18 year old applicants from England by IMD2015 quintile: 7 days after A level results day

Applicant Status IMD2015		2010	2011	2012	2013	2014	2015	2016	2017	2018	2019
Placed	Quintile 1	19,560	21,350	21,650	23,730	25,760	28,200	28,820	30,030	30,420	32,310
	Quintile 2	25,490	26,830	26,350	28,310	29,580	30,990	32,100	32,570	32,580	33,730
	Quintile 3	33,170	34,330	32,990	34,070	35,170	36,770	37,360	37,980	37,070	37,310
	Quintile 4	40,510	42,420	40,340	41,370	42,370	43,810	44,640	45,010	44,050	43,800
	Quintile 5	54,700	55,610	53,650	54,680	54,560	56,740	57,510	57,560	56,220	55,660

J.6 Placed 18 year old applicants from England by IMD2015 quintile: 7 days after A level results day

Placed 18 year old applicants: change relative to 2018 cycle totals

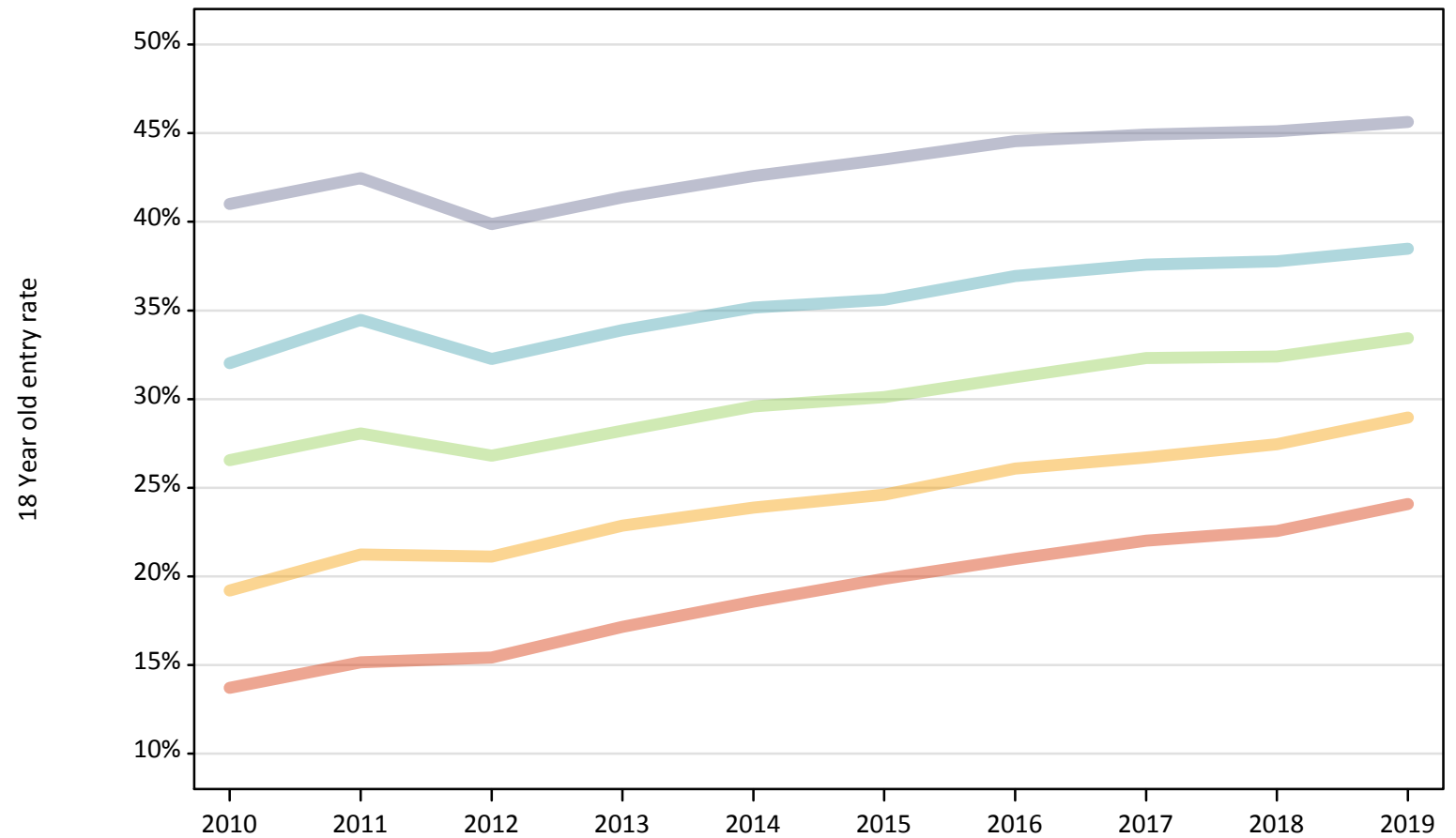
Applicant Status IMD2015		2010	2011	2012	2013	2014	2015	2016	2017	2018	2019
Placed	Quintile 1	-36%	-30%	-29%	-22%	-15%	-7%	-5%	-1%	0%	6%
	Quintile 2	-22%	-18%	-19%	-13%	-9%	-5%	-1%	-0%	0%	4%
	Quintile 3	-11%	-7%	-11%	-8%	-5%	-1%	1%	2%	0%	1%
	Quintile 4	-8%	-4%	-8%	-6%	-4%	-1%	1%	2%	0%	-1%
	Quintile 5	-3%	-1%	-5%	-3%	-3%	1%	2%	2%	0%	-1%

Note: The percentage change is not recorded in the above table for groups with fewer than 10 placed applicants in that cycle or in the 2018 cycle.

J.7 Placed 18 year old applicants from England by IMD2015 quintile: 7 days after A level results day

Placed 18 year old applicants: entry rate

- Quintile 1
- Quintile 2
- Quintile 3
- Quintile 4
- Quintile 5



J.8 Placed 18 year old applicants from England by IMD2015 quintile: 7 days after A level results day

Placed 18 year old applicants: entry rate

Applicant Status	IMD2015	2010	2011	2012	2013	2014	2015	2016	2017	2018	2019
Placed	Quintile 1	13.7%	15.2%	15.4%	17.2%	18.6%	19.9%	21.0%	22.0%	22.6%	24.1%
	Quintile 2	19.2%	21.2%	21.1%	22.9%	23.9%	24.6%	26.1%	26.7%	27.5%	29.0%
	Quintile 3	26.5%	28.1%	26.8%	28.2%	29.6%	30.1%	31.2%	32.3%	32.4%	33.4%
	Quintile 4	32.0%	34.5%	32.3%	33.9%	35.2%	35.6%	36.9%	37.6%	37.8%	38.5%
	Quintile 5	41.0%	42.5%	39.9%	41.4%	42.6%	43.5%	44.6%	44.9%	45.1%	45.6%

J.9 Placed 18 year old applicants from England by IMD2015 quintile: 7 days after A level results day

Placed 18 year old applicants: entry rate (indexed to 100 = Quintile 1)

Applicant Status	IMD2015	2010	2011	2012	2013	2014	2015	2016	2017	2018	2019
Placed	Quintile 1	100	100	100	100	100	100	100	100	100	100
	Quintile 2	140	140	137	133	129	124	124	121	122	120
	Quintile 3	194	185	174	164	159	152	149	147	144	139
	Quintile 4	234	227	209	198	189	179	176	171	167	160
	Quintile 5	299	280	259	241	229	219	212	204	200	189