

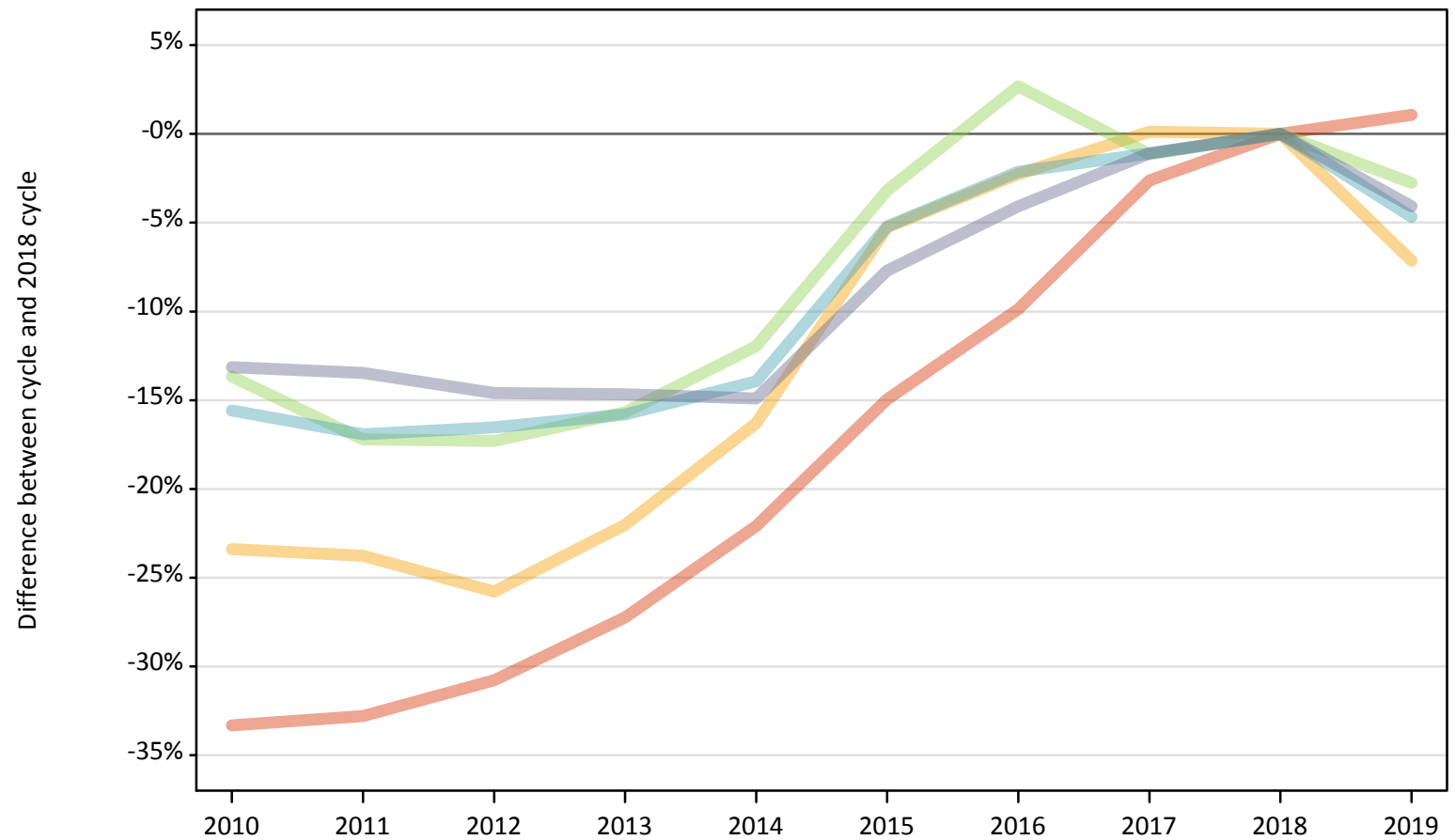
Daily Clearing Analysis: SIMD2012 2016

Analysis at 00:05 on Thursday 22 August 2019 (7 days after A level results day)

J.1 Placed applicants from Scotland by SIMD2012/2016 quintile: 7 days after A level results day

Placed applicants: change relative to 2018 cycle totals

- Quintile 1
- Quintile 2
- Quintile 3
- Quintile 4
- Quintile 5



Note: The percentage change is not plotted in the above chart for groups with fewer than 30 placed applicants in any one cycle.

J.2 Placed applicants from Scotland by SIMD2012/2016 quintile: 7 days after A level results day

Applicant Status	SIMD2012/2016	2010	2011	2012	2013	2014	2015	2016	2017	2018	2019
Placed	Quintile 1	3,330	3,360	3,460	3,640	3,890	4,250	4,500	4,870	5,000	5,050
	Quintile 2	4,060	4,040	3,940	4,130	4,440	5,020	5,180	5,310	5,300	4,920
	Quintile 3	5,350	5,130	5,120	5,220	5,450	6,000	6,360	6,120	6,190	6,020
	Quintile 4	6,480	6,370	6,400	6,460	6,600	7,270	7,510	7,590	7,670	7,310
	Quintile 5	8,520	8,490	8,380	8,370	8,350	9,060	9,410	9,710	9,810	9,410

J.3 Placed applicants from Scotland by SIMD2012/2016 quintile: 7 days after A level results day

Placed applicants: change relative to 2018 cycle totals

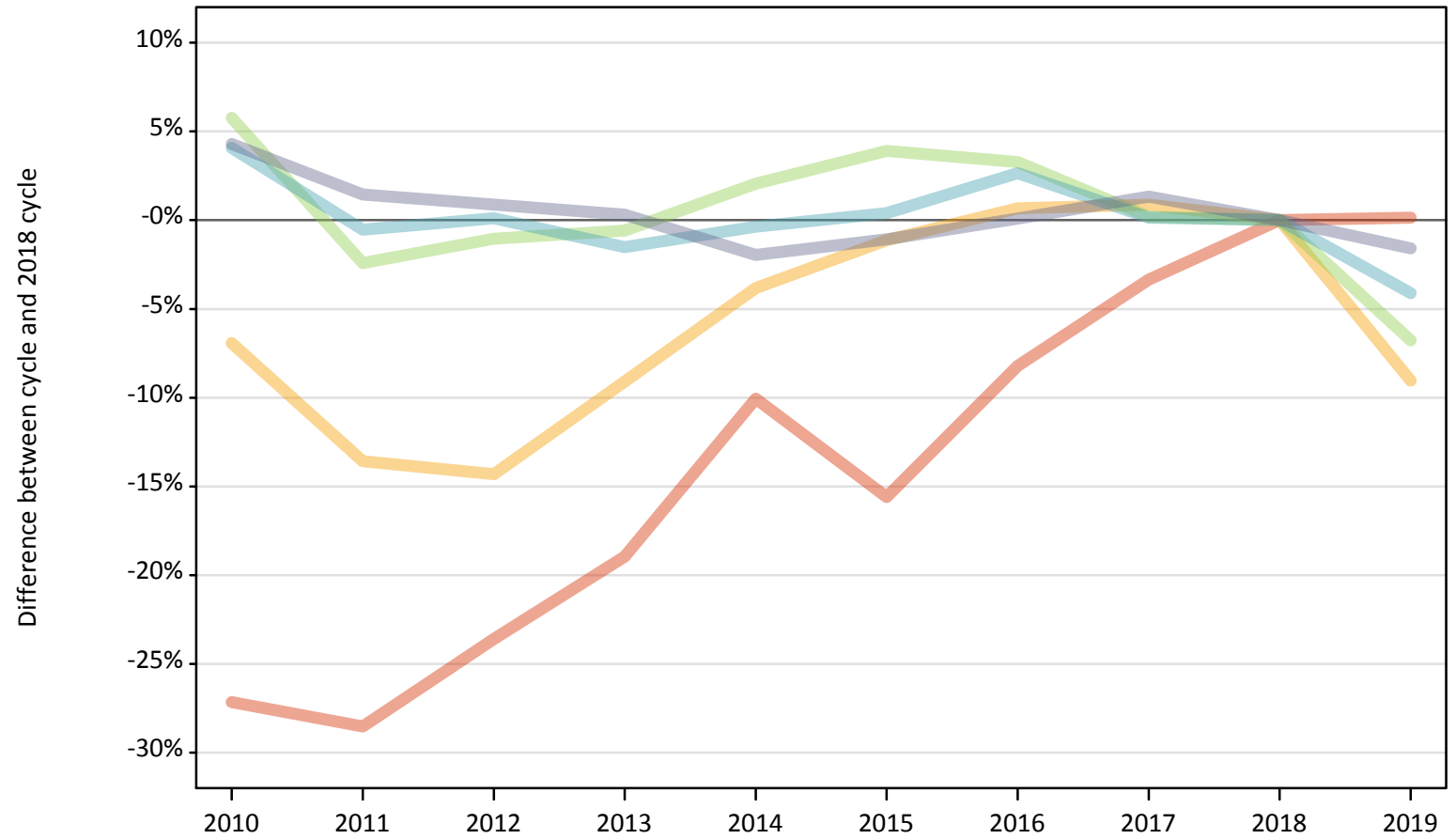
Applicant Status	SIMD2012/2016	2010	2011	2012	2013	2014	2015	2016	2017	2018	2019
Placed	Quintile 1	-33%	-33%	-31%	-27%	-22%	-15%	-10%	-3%	0%	1%
	Quintile 2	-23%	-24%	-26%	-22%	-16%	-5%	-2%	0%	0%	-7%
	Quintile 3	-14%	-17%	-17%	-16%	-12%	-3%	3%	-1%	0%	-3%
	Quintile 4	-16%	-17%	-17%	-16%	-14%	-5%	-2%	-1%	0%	-5%
	Quintile 5	-13%	-13%	-15%	-15%	-15%	-8%	-4%	-1%	0%	-4%

Note: The percentage change is not recorded in the above table for groups with fewer than 10 placed applicants in that cycle or in the 2018 cycle.

J.4 Placed 18 year old applicants from Scotland by SIMD2012/2016 quintile: 7 days after A level results day

Placed 18 year old applicants: change relative to 2018 cycle totals

- Quintile 1
- Quintile 2
- Quintile 3
- Quintile 4
- Quintile 5



Note: The percentage change is not plotted in the above chart for groups with fewer than 30 placed applicants in any one cycle.

J.5 Placed 18 year old applicants from Scotland by SIMD2012/2016 quintile: 7 days after A level results day

Applicant Status	SIMD2012/2016	2010	2011	2012	2013	2014	2015	2016	2017	2018	2019
Placed	Quintile 1	1,070	1,050	1,120	1,190	1,320	1,230	1,340	1,410	1,460	1,460
	Quintile 2	1,800	1,670	1,660	1,760	1,860	1,910	1,950	1,950	1,940	1,760
	Quintile 3	2,720	2,510	2,540	2,550	2,620	2,670	2,650	2,570	2,570	2,390
	Quintile 4	3,700	3,540	3,560	3,500	3,540	3,570	3,650	3,560	3,550	3,410
	Quintile 5	5,240	5,100	5,070	5,040	4,920	4,970	5,030	5,090	5,020	4,940

J.6 Placed 18 year old applicants from Scotland by SIMD2012/2016 quintile: 7 days after A level results day

Placed 18 year old applicants: change relative to 2018 cycle totals

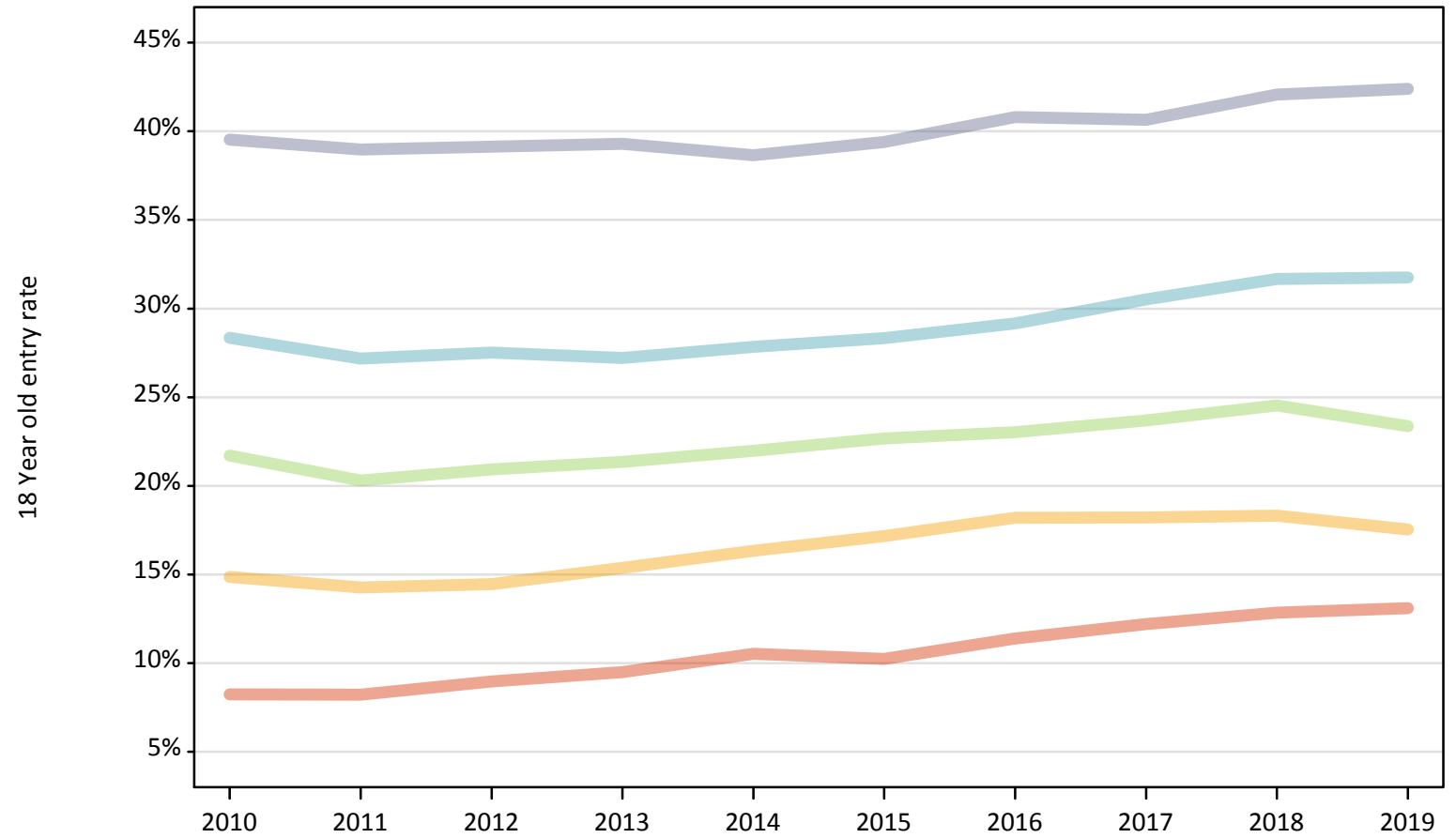
Applicant Status	SIMD2012/2016	2010	2011	2012	2013	2014	2015	2016	2017	2018	2019
Placed	Quintile 1	-27%	-29%	-24%	-19%	-10%	-16%	-8%	-3%	0%	0%
	Quintile 2	-7%	-14%	-14%	-9%	-4%	-1%	1%	1%	0%	-9%
	Quintile 3	6%	-2%	-1%	-1%	2%	4%	3%	0%	0%	-7%
	Quintile 4	4%	-1%	0%	-2%	-0%	0%	3%	0%	0%	-4%
	Quintile 5	4%	1%	1%	0%	-2%	-1%	0%	1%	0%	-2%

Note: The percentage change is not recorded in the above table for groups with fewer than 10 placed applicants in that cycle or in the 2018 cycle.

J.7 Placed 18 year old applicants from Scotland by SIMD2012/2016 quintile: 7 days after A level results day

Placed 18 year old applicants: entry rate

- Quintile 1
- Quintile 2
- Quintile 3
- Quintile 4
- Quintile 5



J.8 Placed 18 year old applicants from Scotland by SIMD2012/2016 quintile: 7 days after A level results day

Placed 18 year old applicants: entry rate

Applicant Status	SIMD2012/2016	2010	2011	2012	2013	2014	2015	2016	2017	2018	2019
Placed	Quintile 1	8.2%	8.2%	9.0%	9.5%	10.5%	10.2%	11.4%	12.2%	12.9%	13.1%
	Quintile 2	14.9%	14.3%	14.5%	15.4%	16.3%	17.2%	18.2%	18.2%	18.3%	17.5%
	Quintile 3	21.7%	20.3%	20.9%	21.4%	22.0%	22.7%	23.0%	23.7%	24.5%	23.4%
	Quintile 4	28.4%	27.2%	27.5%	27.2%	27.8%	28.3%	29.2%	30.5%	31.7%	31.8%
	Quintile 5	39.5%	39.0%	39.1%	39.3%	38.6%	39.4%	40.8%	40.6%	42.1%	42.4%

J.9 Placed 18 year old applicants from Scotland by SIMD2012/2016 quintile: 7 days after A level results day

Placed 18 year old applicants: entry rate (indexed to 100 = Quintile 1)

Applicant Status	SIMD2012/2016	2010	2011	2012	2013	2014	2015	2016	2017	2018	2019
Placed	Quintile 1	100	100	100	100	100	100	100	100	100	100
	Quintile 2	181	174	161	162	155	168	160	149	142	134
	Quintile 3	264	247	233	225	209	222	202	194	191	178
	Quintile 4	345	331	307	287	264	277	256	250	246	242
	Quintile 5	480	474	436	414	367	385	358	333	327	324