

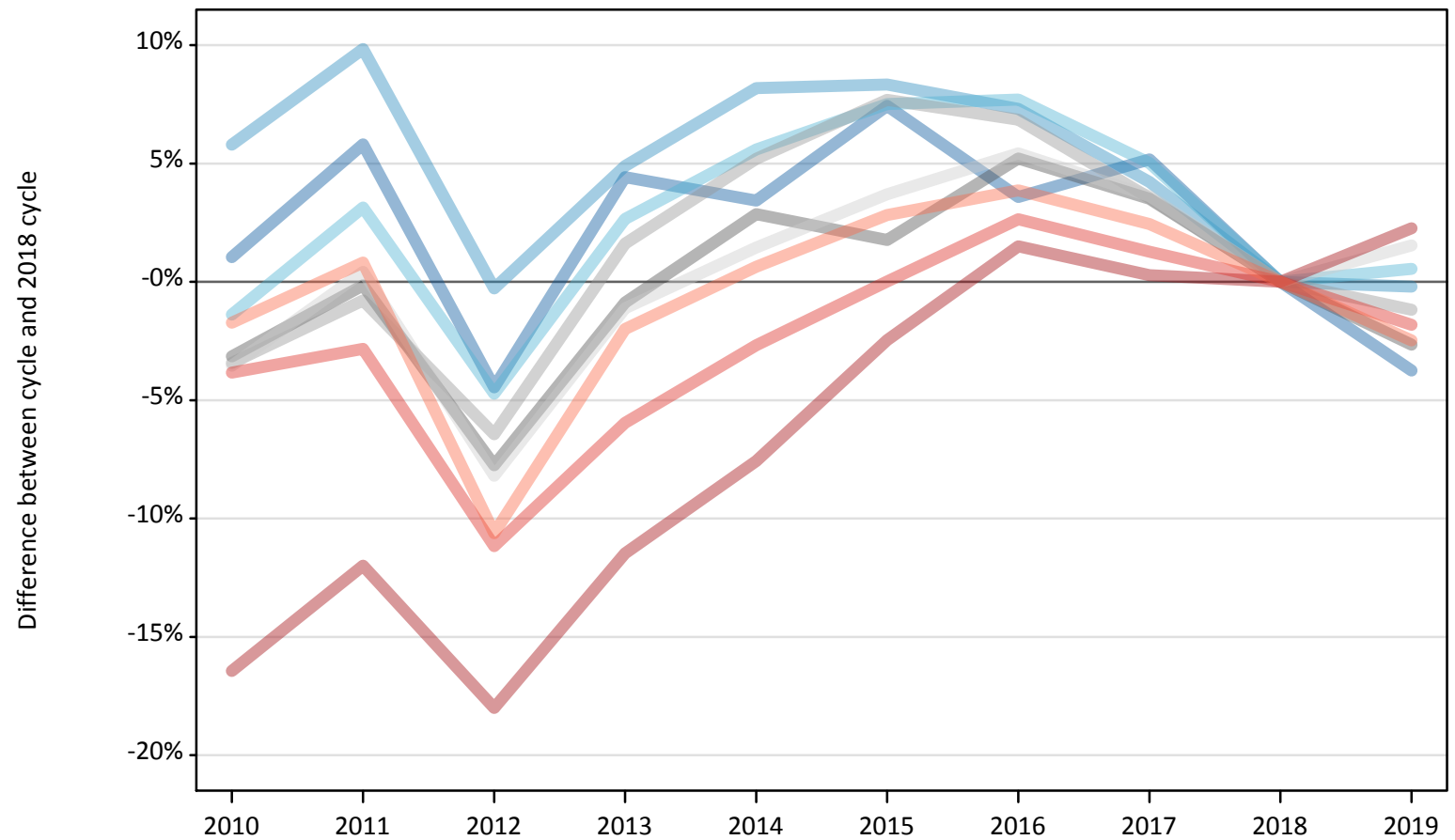
Daily Clearing Analysis: Region

Analysis at 00:05 on Thursday 22 August 2019 (7 days after A level results day)

R.1 Placed applicants by region of domicile: 7 days after A level results day

Placed applicants: change relative to 2018 cycle totals

- North East
- North West
- Yorkshire and The Humber
- East Midlands
- West Midlands
- East of England
- London
- South East
- South West



Note: The percentage change is not plotted in the above chart for groups with fewer than 30 placed applicants in any one cycle.

R.2 Placed applicants by region of domicile: 7 days after A level results day

Applicant Status	Domicile	2010	2011	2012	2013	2014	2015	2016	2017	2018	2019
Placed	North East	14,470	15,150	13,680	14,950	14,810	15,390	14,840	15,060	14,320	13,790
	North West	45,550	47,280	42,930	45,160	46,580	46,640	46,200	44,870	43,050	42,960
	Yorkshire and The Humber	29,770	31,140	28,760	30,990	31,880	32,460	32,510	31,700	30,190	30,350
	East Midlands	25,510	26,300	24,300	26,110	27,090	26,800	27,710	27,260	26,340	25,640
	West Midlands	33,840	34,770	32,790	35,610	36,870	37,740	37,440	36,290	35,040	34,630
	East of England	33,970	35,370	32,330	34,820	35,720	36,520	37,130	36,490	35,220	35,760
	London	56,750	59,780	55,690	60,130	62,780	66,250	68,940	68,120	67,920	69,460
	South East	54,920	55,490	50,730	53,710	55,580	57,120	58,620	57,840	57,110	56,070
	South West	31,060	31,870	28,250	30,980	31,810	32,500	32,830	32,380	31,610	30,820
	(England total)	325,830	337,140	309,450	332,450	343,110	351,400	356,210	350,000	340,790	339,480
	Scotland	27,910	27,540	27,460	27,940	28,810	31,700	33,060	33,670	34,090	32,920
	Northern Ireland	12,810	13,030	12,140	13,440	13,470	13,160	14,020	13,590	12,960	12,880
	Wales	16,860	16,670	17,360	17,550	18,290	18,630	18,840	18,410	17,930	17,710
	UK	383,410	394,370	366,410	391,380	403,690	414,900	422,130	415,680	405,770	402,980

R.3 Placed applicants by region of domicile: 7 days after A level results day

Placed applicants: change relative to 2018 cycle totals

Applicant Status	Domicile	2010	2011	2012	2013	2014	2015	2016	2017	2018	2019
Placed	North East	1%	6%	-4%	4%	3%	7%	4%	5%	0%	-4%
	North West	6%	10%	-0%	5%	8%	8%	7%	4%	0%	-0%
	Yorkshire and The Humber	-1%	3%	-5%	3%	6%	8%	8%	5%	0%	1%
	East Midlands	-3%	-0%	-8%	-1%	3%	2%	5%	4%	0%	-3%
	West Midlands	-3%	-1%	-6%	2%	5%	8%	7%	4%	0%	-1%
	East of England	-4%	0%	-8%	-1%	1%	4%	5%	4%	0%	2%
	London	-16%	-12%	-18%	-11%	-8%	-2%	2%	0%	0%	2%
	South East	-4%	-3%	-11%	-6%	-3%	0%	3%	1%	0%	-2%
	South West	-2%	1%	-11%	-2%	1%	3%	4%	2%	0%	-2%
	(England total)	-4%	-1%	-9%	-2%	1%	3%	5%	3%	0%	-0%
	Scotland	-18%	-19%	-19%	-18%	-15%	-7%	-3%	-1%	0%	-3%
	Northern Ireland	-1%	1%	-6%	4%	4%	2%	8%	5%	0%	-1%
	Wales	-6%	-7%	-3%	-2%	2%	4%	5%	3%	0%	-1%
	UK	-6%	-3%	-10%	-4%	-1%	2%	4%	2%	0%	-1%

Note: The percentage change is not recorded in the above table for groups with fewer than 10 placed applicants in that cycle or in the 2018 cycle.

R.4 Placed applicants by region of domicile: 7 days after A level results day

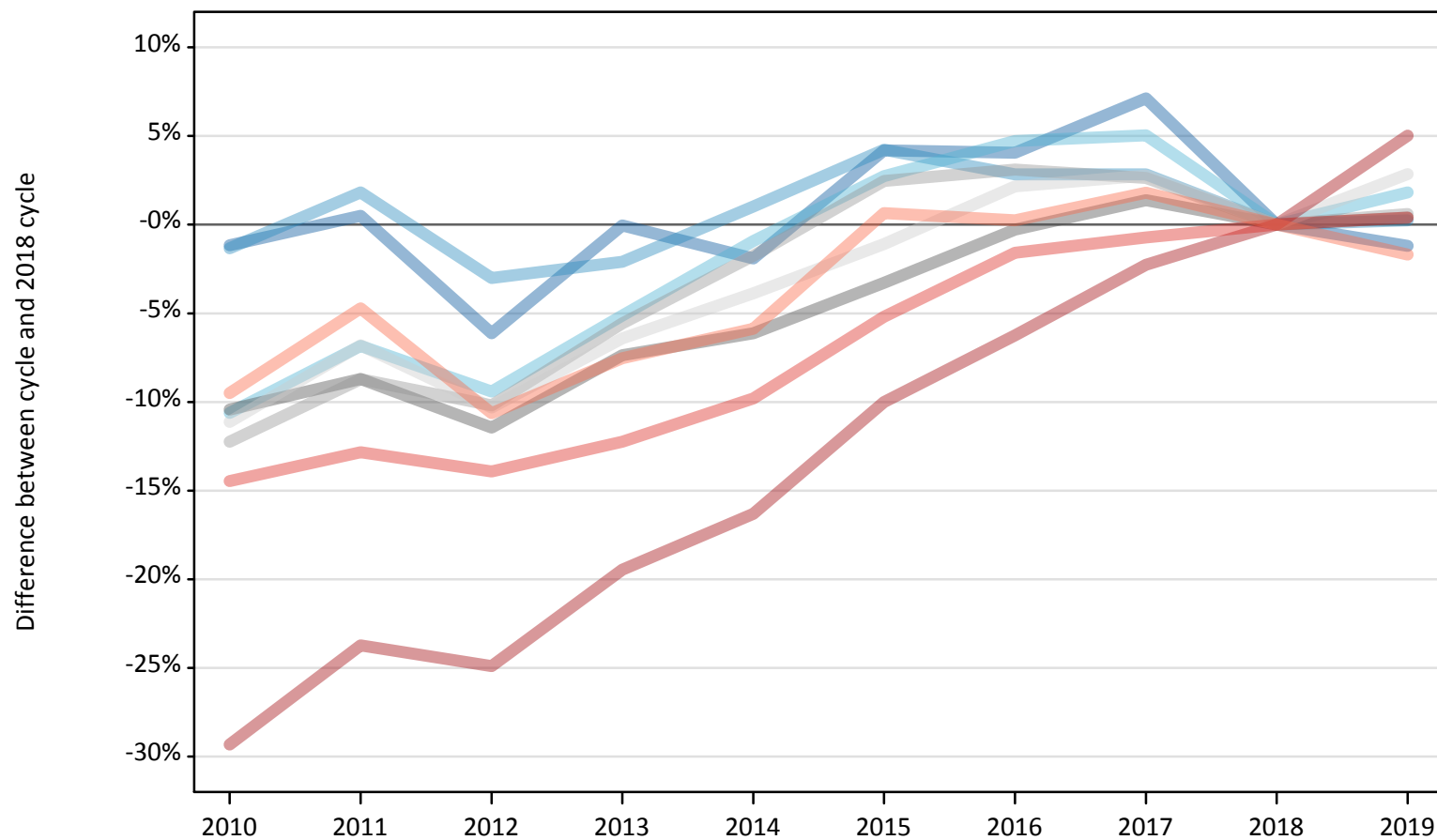
Placed applicants: absolute change relative to 2018 cycle totals

Applicant Status	Domicile	2010	2011	2012	2013	2014	2015	2016	2017	2018	2019
Placed	North East	150	830	-640	630	490	1,060	510	740	0	-540
	North West	2,500	4,230	-120	2,110	3,530	3,590	3,150	1,820	0	-90
	Yorkshire and The Humber	-420	950	-1,430	800	1,690	2,270	2,330	1,520	0	170
	East Midlands	-830	-40	-2,040	-230	750	470	1,370	920	0	-700
	West Midlands	-1,200	-280	-2,260	560	1,820	2,690	2,400	1,240	0	-410
	East of England	-1,250	150	-2,890	-390	510	1,300	1,910	1,270	0	540
	London	-11,170	-8,150	-12,230	-7,800	-5,140	-1,670	1,020	200	0	1,540
	South East	-2,190	-1,620	-6,380	-3,400	-1,530	10	1,510	730	0	-1,040
	South West	-550	260	-3,360	-630	200	890	1,220	770	0	-780
	(England total)	-14,960	-3,660	-31,340	-8,340	2,320	10,610	15,410	9,210	0	-1,320
	Scotland	-6,180	-6,550	-6,640	-6,150	-5,280	-2,390	-1,030	-420	0	-1,170
	Northern Ireland	-150	70	-820	480	510	210	1,060	630	0	-80
	Wales	-1,080	-1,260	-570	-380	360	700	910	480	0	-220
	UK	-22,360	-11,400	-39,360	-14,400	-2,090	9,120	16,360	9,900	0	-2,790

R.5 Placed 18 year old applicants by region of domicile: 7 days after A level results day

Placed 18 year old applicants: change relative to 2018 cycle totals

- North East
- North West
- Yorkshire and The Humber
- East Midlands
- West Midlands
- East of England
- London
- South East
- South West



Note: The percentage change is not plotted in the above chart for groups with fewer than 30 placed applicants in any one cycle.

R.6 Placed 18 year old applicants by region of domicile: 7 days after A level results day

Applicant Status	Domicile	2010	2011	2012	2013	2014	2015	2016	2017	2018	2019
Placed	North East	7,870	8,000	7,470	7,960	7,810	8,290	8,280	8,530	7,960	7,860
	North West	25,290	26,100	24,860	25,100	25,890	26,720	26,360	26,360	25,630	25,700
	Yorkshire and The Humber	16,100	16,780	16,320	17,090	17,850	18,510	18,860	18,920	18,010	18,340
	East Midlands	14,250	14,520	14,090	14,740	14,930	15,380	15,860	16,130	15,910	15,970
	West Midlands	17,900	18,620	18,320	19,260	20,040	20,900	21,030	20,930	20,400	20,520
	East of England	19,660	20,620	19,850	20,710	21,270	21,880	22,600	22,740	22,130	22,760
	London	27,010	29,140	28,700	30,770	31,980	34,390	35,830	37,340	38,210	40,130
	South East	30,200	30,780	30,400	30,990	31,850	33,470	34,750	35,050	35,310	35,450
	South West	15,470	16,290	15,280	15,810	16,100	17,210	17,140	17,410	17,100	16,810
	(England total)	173,750	180,850	175,270	182,420	187,710	196,750	200,710	203,410	200,650	203,530
	Scotland	14,560	13,890	13,980	14,060	14,270	14,380	14,630	14,610	14,580	14,030
	Northern Ireland	8,450	8,290	7,860	8,370	8,190	8,060	8,320	8,220	7,740	7,670
	Wales	9,620	9,230	9,600	9,530	9,900	10,330	10,480	10,150	9,990	9,800
	UK	206,380	212,260	206,710	214,380	220,070	229,520	234,150	236,390	232,960	235,040

R.7 Placed 18 year old applicants by region of domicile: 7 days after A level results day

Placed 18 year old applicants: change relative to 2018 cycle totals

Applicant Status	Domicile	2010	2011	2012	2013	2014	2015	2016	2017	2018	2019
Placed	North East	-1%	1%	-6%	-0%	-2%	4%	4%	7%	0%	-1%
	North West	-1%	2%	-3%	-2%	1%	4%	3%	3%	0%	0%
	Yorkshire and The Humber	-11%	-7%	-9%	-5%	-1%	3%	5%	5%	0%	2%
	East Midlands	-10%	-9%	-11%	-7%	-6%	-3%	-0%	1%	0%	0%
	West Midlands	-12%	-9%	-10%	-6%	-2%	2%	3%	3%	0%	1%
	East of England	-11%	-7%	-10%	-6%	-4%	-1%	2%	3%	0%	3%
	London	-29%	-24%	-25%	-19%	-16%	-10%	-6%	-2%	0%	5%
	South East	-14%	-13%	-14%	-12%	-10%	-5%	-2%	-1%	0%	0%
	South West	-10%	-5%	-11%	-8%	-6%	1%	0%	2%	0%	-2%
	(England total)	-13%	-10%	-13%	-9%	-6%	-2%	0%	1%	0%	1%
	Scotland	-0%	-5%	-4%	-4%	-2%	-1%	0%	0%	0%	-4%
	Northern Ireland	9%	7%	2%	8%	6%	4%	8%	6%	0%	-1%
	Wales	-4%	-8%	-4%	-5%	-1%	3%	5%	2%	0%	-2%
	UK	-11%	-9%	-11%	-8%	-6%	-1%	1%	1%	0%	1%

Note: The percentage change is not recorded in the above table for groups with fewer than 10 placed applicants in that cycle or in the 2018 cycle.

R.8 Placed 18 year old applicants by region of domicile: 7 days after A level results day

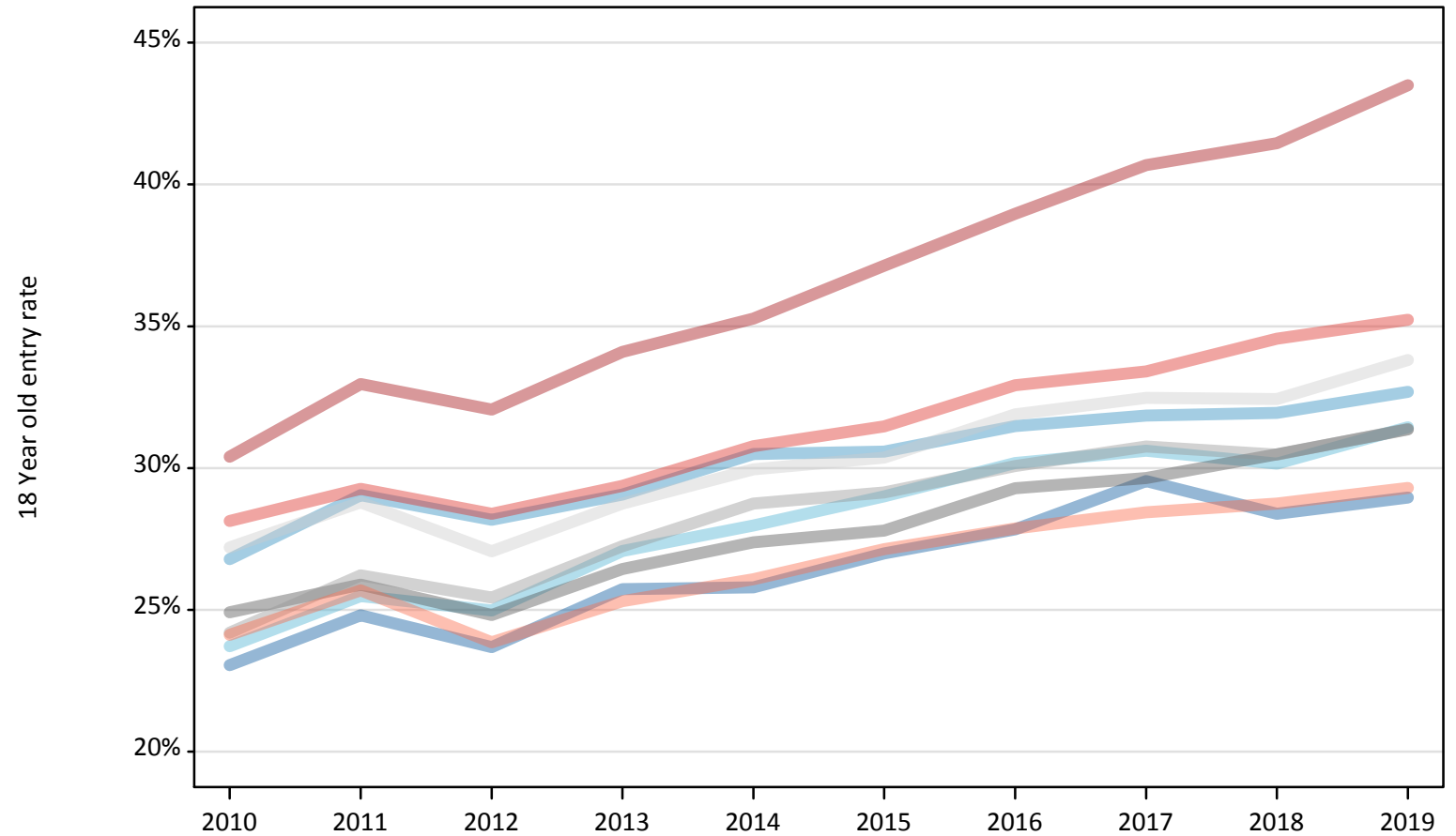
Placed 18 year old applicants: absolute change relative to 2018 cycle totals

Applicant Status	Domicile	2010	2011	2012	2013	2014	2015	2016	2017	2018	2019
Placed	North East	-90	40	-490	0	-150	330	320	570	0	-100
	North West	-340	470	-770	-540	260	1,090	730	730	0	60
	Yorkshire and The Humber	-1,910	-1,230	-1,700	-920	-170	490	850	910	0	330
	East Midlands	-1,660	-1,390	-1,820	-1,170	-970	-520	-40	220	0	60
	West Midlands	-2,500	-1,780	-2,080	-1,130	-360	500	630	540	0	120
	East of England	-2,460	-1,510	-2,280	-1,420	-860	-240	480	610	0	630
	London	-11,200	-9,070	-9,510	-7,440	-6,230	-3,820	-2,380	-870	0	1,920
	South East	-5,110	-4,530	-4,920	-4,320	-3,460	-1,840	-560	-260	0	140
	South West	-1,630	-810	-1,820	-1,290	-1,000	110	40	310	0	-290
	(England total)	-26,900	-19,800	-25,380	-18,230	-12,940	-3,900	60	2,760	0	2,880
	Scotland	-20	-690	-600	-520	-310	-200	50	30	0	-550
	Northern Ireland	710	550	120	640	450	330	580	490	0	-70
	Wales	-380	-760	-390	-460	-90	340	490	160	0	-190
	UK	-26,590	-20,700	-26,250	-18,580	-12,890	-3,440	1,190	3,430	0	2,070

R.9 Placed 18 year old applicants by region of domicile: 7 days after A level results day

Placed 18 year old applicants: entry rate

- North East
- North West
- Yorkshire and The Humber
- East Midlands
- West Midlands
- East of England
- London
- South East
- South West



R.10 Placed 18 year old applicants by region of domicile: 7 days after A level results day

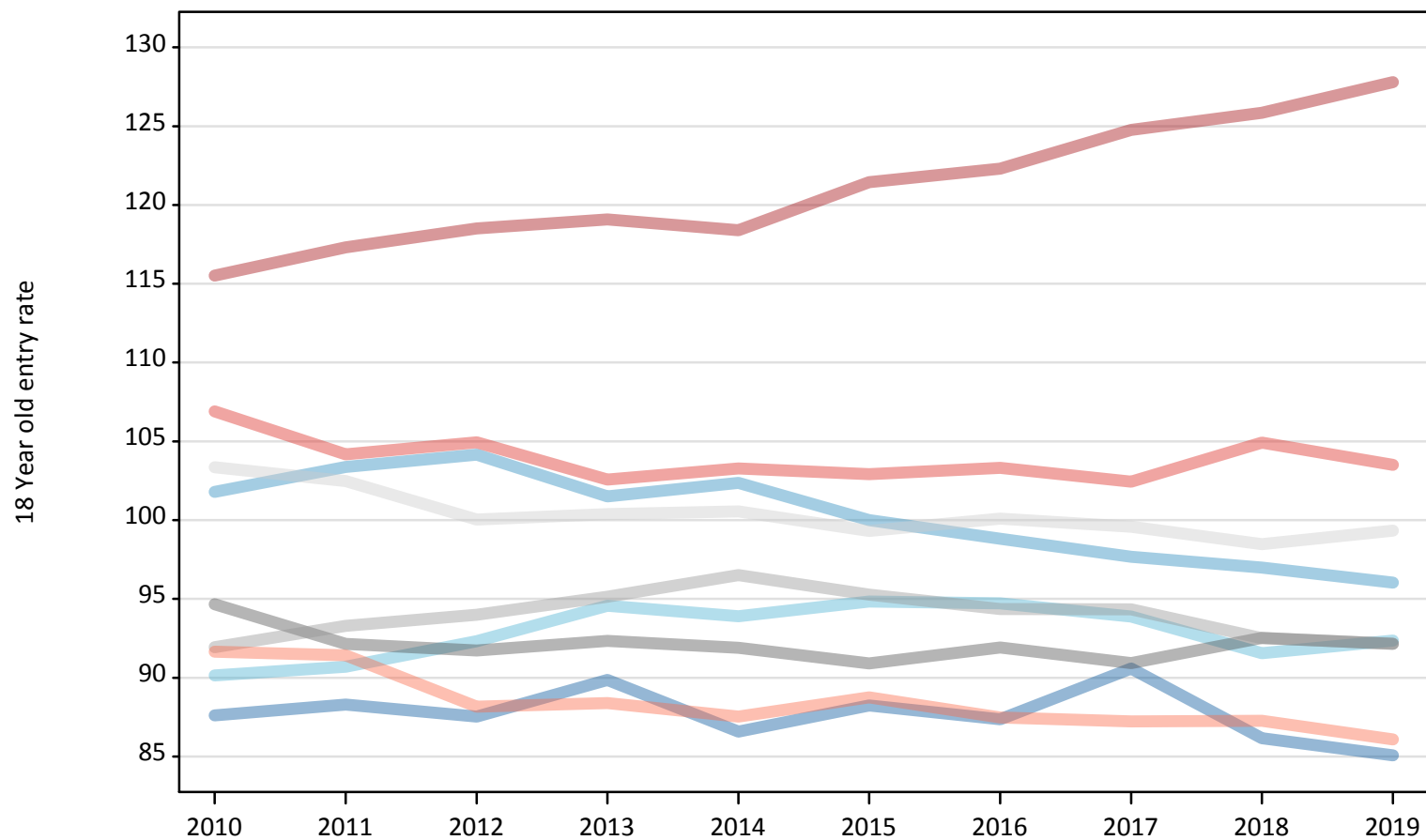
Placed 18 year old applicants: entry rate

Applicant Status	Domicile	2010	2011	2012	2013	2014	2015	2016	2017	2018	2019
Placed	North East	23.1%	24.8%	23.7%	25.7%	25.8%	27.0%	27.8%	29.5%	28.4%	29.0%
	North West	26.8%	29.0%	28.2%	29.1%	30.5%	30.6%	31.5%	31.8%	31.9%	32.7%
	Yorkshire and The Humber	23.7%	25.5%	25.0%	27.1%	28.0%	29.0%	30.2%	30.6%	30.2%	31.4%
	East Midlands	24.9%	25.9%	24.8%	26.4%	27.4%	27.8%	29.3%	29.7%	30.5%	31.4%
	West Midlands	24.2%	26.2%	25.4%	27.2%	28.8%	29.1%	30.1%	30.8%	30.5%	31.4%
	East of England	27.2%	28.8%	27.1%	28.7%	30.0%	30.4%	31.9%	32.5%	32.4%	33.8%
	London	30.4%	33.0%	32.1%	34.1%	35.3%	37.1%	39.0%	40.7%	41.5%	43.5%
	South East	28.1%	29.3%	28.4%	29.4%	30.8%	31.5%	32.9%	33.4%	34.6%	35.2%
	South West	24.1%	25.7%	23.9%	25.3%	26.1%	27.1%	27.9%	28.4%	28.7%	29.3%
	(England total)	26.3%	28.1%	27.1%	28.6%	29.8%	30.6%	31.9%	32.6%	32.9%	34.0%
	Scotland	22.8%	22.1%	22.6%	22.8%	23.3%	23.9%	24.9%	25.5%	26.2%	26.1%
	Northern Ireland	33.1%	33.2%	31.3%	34.2%	33.7%	32.5%	34.0%	34.0%	33.4%	34.2%
	Wales	24.1%	23.9%	24.9%	25.2%	26.4%	27.4%	28.9%	28.6%	29.0%	29.2%
	UK	26.1%	27.6%	26.7%	28.2%	29.2%	30.0%	31.2%	31.9%	32.3%	33.2%

R.11 Placed 18 year old applicants by region of domicile: 7 days after A level results day

Placed 18 year old applicants: entry rates (indexed to 100 = England)

- North East
- North West
- Yorkshire and The Humber
- East Midlands
- West Midlands
- East of England
- London
- South East
- South West



R.12 Placed 18 year old applicants by region of domicile: 7 days after A level results day

Placed 18 year old applicants: entry rate (indexed to 100 = England)

Applicant Status	Domicile	2010	2011	2012	2013	2014	2015	2016	2017	2018	2019
Placed	North East	88	88	88	90	87	88	87	91	86	85
	North West	102	103	104	102	102	100	99	98	97	96
	Yorkshire and The Humber	90	91	92	95	94	95	95	94	92	92
	East Midlands	95	92	92	92	92	91	92	91	93	92
	West Midlands	92	93	94	95	97	95	94	94	93	92
	East of England	103	102	100	100	101	99	100	100	98	99
	London	116	117	119	119	118	121	122	125	126	128
	South East	107	104	105	103	103	103	103	102	105	104
	South West	92	91	88	88	88	89	87	87	87	86
	(England total)	100	100	100	100	100	100	100	100	100	100