

# Daily Clearing Analysis: Country

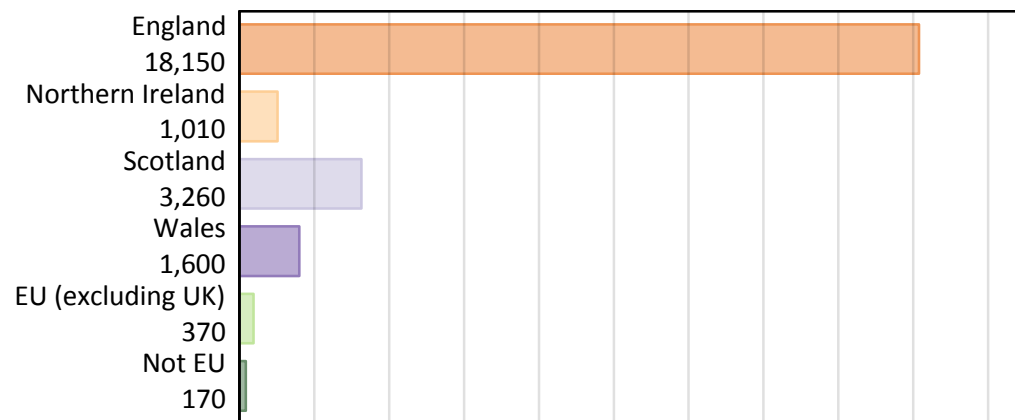
## B7 Nursing analysis at 00:05 on Thursday 22 August 2019 (7 days after A level results day)

### BB.1 Placed applicants to nursing by country of provider and domicile, 2019 cycle

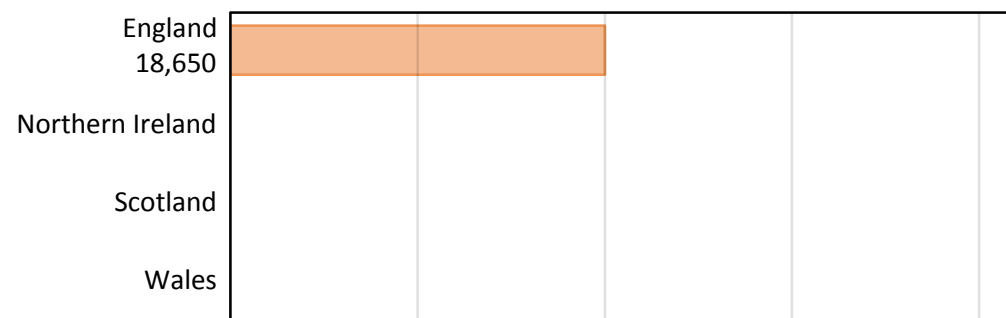
Domicile of applicant	Country of provider				
	England	Northern Ireland	Scotland	Wales	UK
England	17,900				18,150
Northern Ireland	150				1,010
Scotland	20				3,260
Wales	300				1,600
EU (excluding UK)	130				370
Not EU	150				170
All	18,650				24,560

Note that figures for providers in Northern Ireland, Scotland, and Wales are not reported here.

### BB.2 Placed applicants to nursing by domicile group



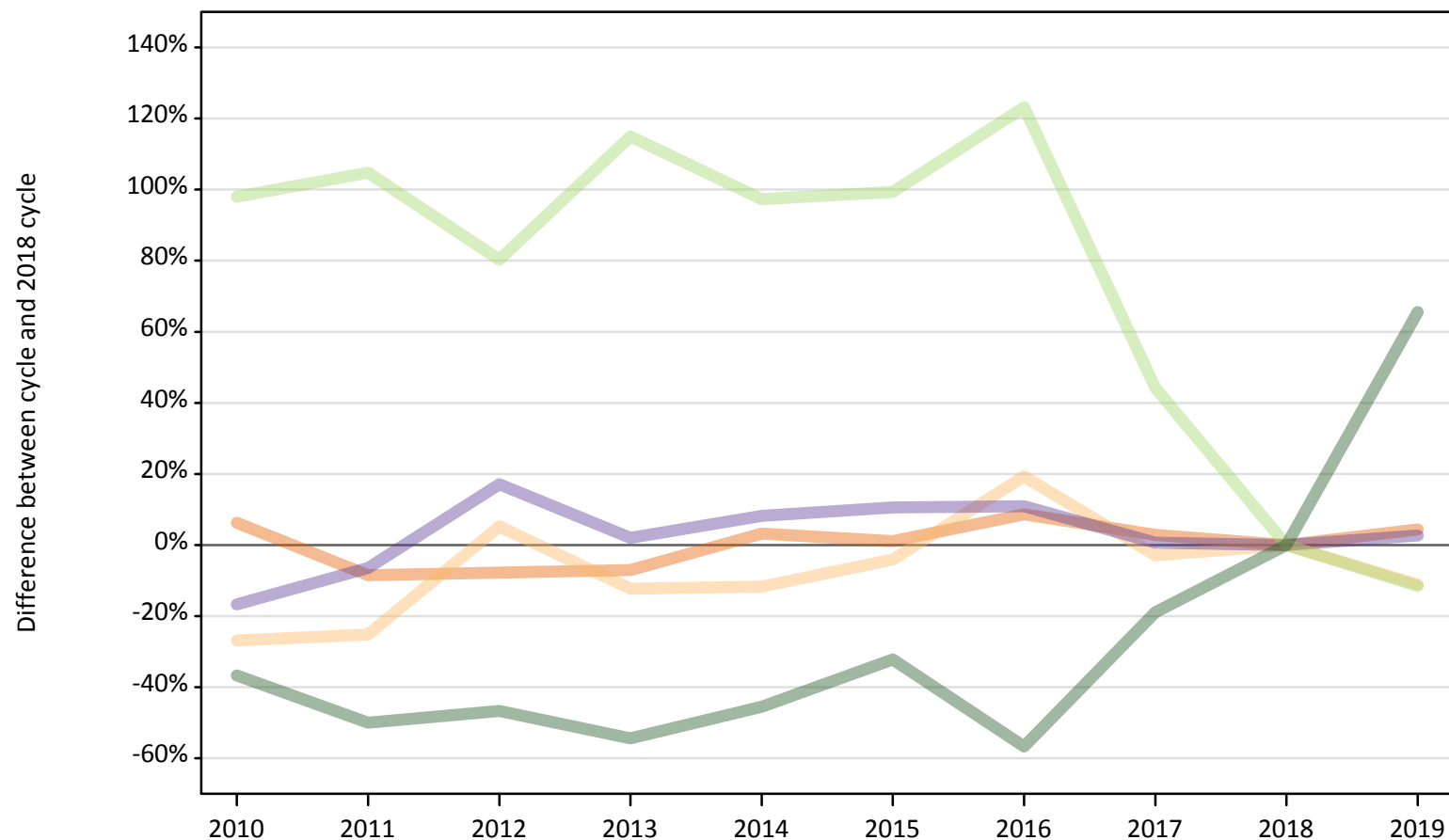
### BB.3 Placed applicants to nursing by country of provider



Note that figures for providers in Northern Ireland, Scotland, and Wales are not reported here.

**BB.4 Placed applicants to nursing at 7 days after A level results day: providers in England**  
 Selected applicant domiciles: difference between cycle and 2018 cycle (at 7 days after A level results day)

- England
- Northern Ireland
- Scotland
- Wales
- EU (excluding UK)
- Not EU



Note: The percentage change is not plotted in the above chart for groups with fewer than 30 placed applicants in any one cycle.

**BB.5 Placed applicants to nursing at 7 days after A level results day: providers in England**

Placed applicants to nursing by domicile (at 7 days after A level results day)

Domicile of applicant	2010	2011	2012	2013	2014	2015	2016	2017	2018	2019
England	18,220	15,690	15,830	15,950	17,690	17,330	18,620	17,650	17,150	17,900
Northern Ireland	130	130	180	150	150	160	200	170	170	150
Scotland	30	30	40	20	40	30	30	20	20	20
Wales	240	270	340	300	320	320	330	300	290	300
EU (excluding UK)	290	300	270	320	290	290	330	210	150	130
Not EU	60	50	50	40	50	60	40	70	90	150

**BB.6 Placed applicants to nursing at 7 days after A level results day: providers in England**

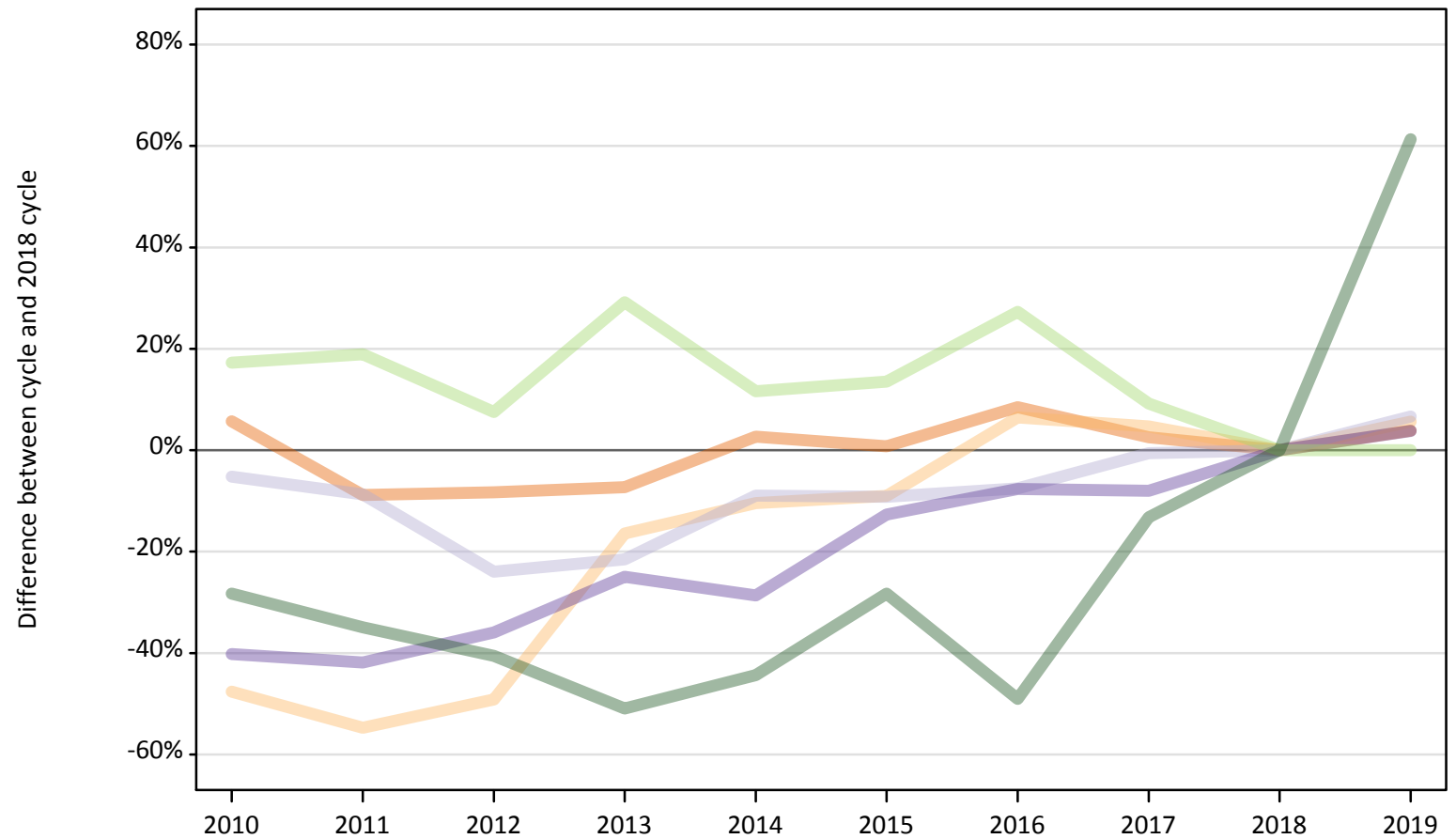
Selected applicant domiciles: difference between cycle and 2018 cycle (at 7 days after A level results day)

Domicile of applicant	2010	2011	2012	2013	2014	2015	2016	2017	2018	2019
England	6%	-8%	-8%	-7%	3%	1%	9%	3%	0%	4%
Northern Ireland	-27%	-25%	5%	-12%	-12%	-4%	19%	-3%	0%	-11%
Scotland	127%	93%	167%	40%	147%	93%	93%	40%	0%	20%
Wales	-17%	-6%	17%	2%	8%	11%	11%	1%	0%	3%
EU (excluding UK)	98%	105%	80%	115%	97%	99%	123%	44%	0%	-12%
Not EU	-37%	-50%	-47%	-54%	-46%	-32%	-57%	-19%	0%	66%

Note: The percentage change is not recorded in the above table for groups with fewer than 10 placed applicants in that cycle or in the 2018 cycle.

**BB.7 Placed applicants to nursing at 7 days after A level results day: providers in the UK**  
Selected applicant domiciles: difference between cycle and 2018 cycle (at 7 days after A level results day)

- England
- Northern Ireland
- Scotland
- Wales
- EU (excluding UK)
- Not EU



Note: The percentage change is not plotted in the above chart for groups with fewer than 30 placed applicants in any one cycle.

**BB.8 Placed applicants to nursing at 7 days after A level results day: providers in the UK**

Placed applicants to nursing by domicile (at 7 days after A level results day)

Domicile of applicant	2010	2011	2012	2013	2014	2015	2016	2017	2018	2019
England	18,480	15,940	16,020	16,200	17,950	17,620	18,960	17,930	17,480	18,150
Northern Ireland	500	430	490	800	860	870	1,020	1,000	960	1,010
Scotland	2,890	2,790	2,320	2,400	2,780	2,770	2,820	3,040	3,050	3,260
Wales	920	900	990	1,160	1,100	1,350	1,420	1,420	1,540	1,600
EU (excluding UK)	430	440	400	480	410	420	470	400	370	370
Not EU	80	70	60	50	60	80	50	90	110	170

**BB.9 Placed applicants to nursing at 7 days after A level results day: providers in the UK**

Selected applicant domiciles: difference between cycle and 2018 cycle (at 7 days after A level results day)

Domicile of applicant	2010	2011	2012	2013	2014	2015	2016	2017	2018	2019
England	6%	-9%	-8%	-7%	3%	1%	9%	3%	0%	4%
Northern Ireland	-48%	-55%	-49%	-16%	-10%	-9%	6%	5%	0%	6%
Scotland	-5%	-9%	-24%	-22%	-9%	-9%	-8%	-1%	0%	7%
Wales	-40%	-42%	-36%	-25%	-29%	-13%	-8%	-8%	0%	4%
EU (excluding UK)	17%	19%	8%	29%	12%	14%	27%	9%	0%	0%
Not EU	-28%	-35%	-41%	-51%	-44%	-28%	-49%	-13%	0%	61%

Note: The percentage change is not recorded in the above table for groups with fewer than 10 placed applicants in that cycle or in the 2018 cycle.