

## B7 Nursing analysis at 00:05 on Thursday 22 August 2019 (7 days after A level results day)

### CB.1 Placed applicants to nursing by country of domicile and age group, 2019 cycle (7 days after A level results day)

| Domicile of applicant | Age group    |       |       |          |             |
|-----------------------|--------------|-------|-------|----------|-------------|
|                       | 17 and under | 18    | 19    | 20 to 24 | 25 and over |
| England               | 0            | 4,780 | 2,180 | 3,920    | 7,270       |
| Northern Ireland      | 0            | 330   | 180   | 230      | 270         |
| Scotland              | 20           | 660   | 340   | 740      | 1,490       |
| Wales                 | 0            | 320   | 220   | 380      | 670         |
| UK                    | 30           | 6,090 | 2,920 | 5,280    | 9,700       |

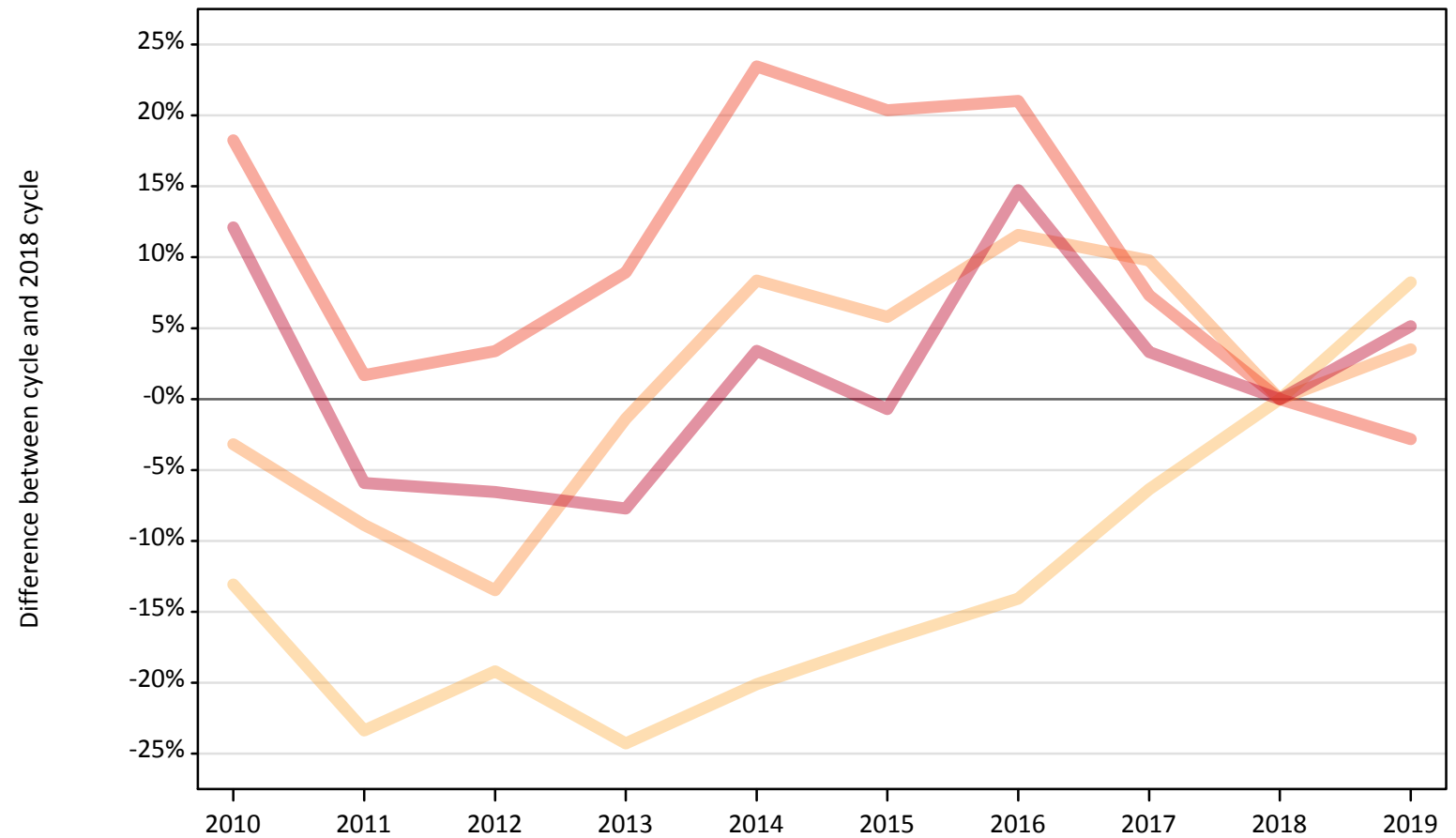
### CB.2 Proportion of 18 year old population placed to nursing by country of domicile, 2019 cycle (7 days after A level results day)

| Domicile of applicant | Age group | 2019 |
|-----------------------|-----------|------|
| England               | 18        | 0.8% |
| Northern Ireland      | 18        | 1.5% |
| Scotland              | 18        | 1.2% |
| Wales                 | 18        | 1.0% |

### CB.3 Placed applicants to nursing from England by age group at 7 days after A level results day

Selected age groups: difference between cycle and 2018 cycle

- 17 and under
- 18
- 19
- 20 to 24
- 25 and over



Note: The percentage change is not plotted in the above chart for groups with fewer than 30 placed applicants in any one cycle.

#### CB.4 Placed applicants to nursing from England by age group at 7 days after A level results day

All age groups

| Domicile of applicant | Age group    | 2010  | 2011  | 2012  | 2013  | 2014  | 2015  | 2016  | 2017  | 2018  | 2019  |
|-----------------------|--------------|-------|-------|-------|-------|-------|-------|-------|-------|-------|-------|
| England               | 17 and under | 80    | 30    | 0     | 0     | 10    | 0     | 0     | 10    | 10    | 0     |
|                       | 18           | 3,840 | 3,380 | 3,570 | 3,340 | 3,530 | 3,660 | 3,790 | 4,130 | 4,410 | 4,780 |
|                       | 19           | 2,040 | 1,920 | 1,820 | 2,080 | 2,280 | 2,230 | 2,350 | 2,310 | 2,110 | 2,180 |
|                       | 20 to 24     | 4,770 | 4,100 | 4,170 | 4,390 | 4,980 | 4,850 | 4,880 | 4,330 | 4,030 | 3,920 |
|                       | 25 and over  | 7,760 | 6,510 | 6,460 | 6,380 | 7,150 | 6,870 | 7,940 | 7,150 | 6,920 | 7,270 |

#### CB.5 Placed applicants to nursing from England by age group at 7 days after A level results day

Selected age groups: difference between cycle and 2018 cycle

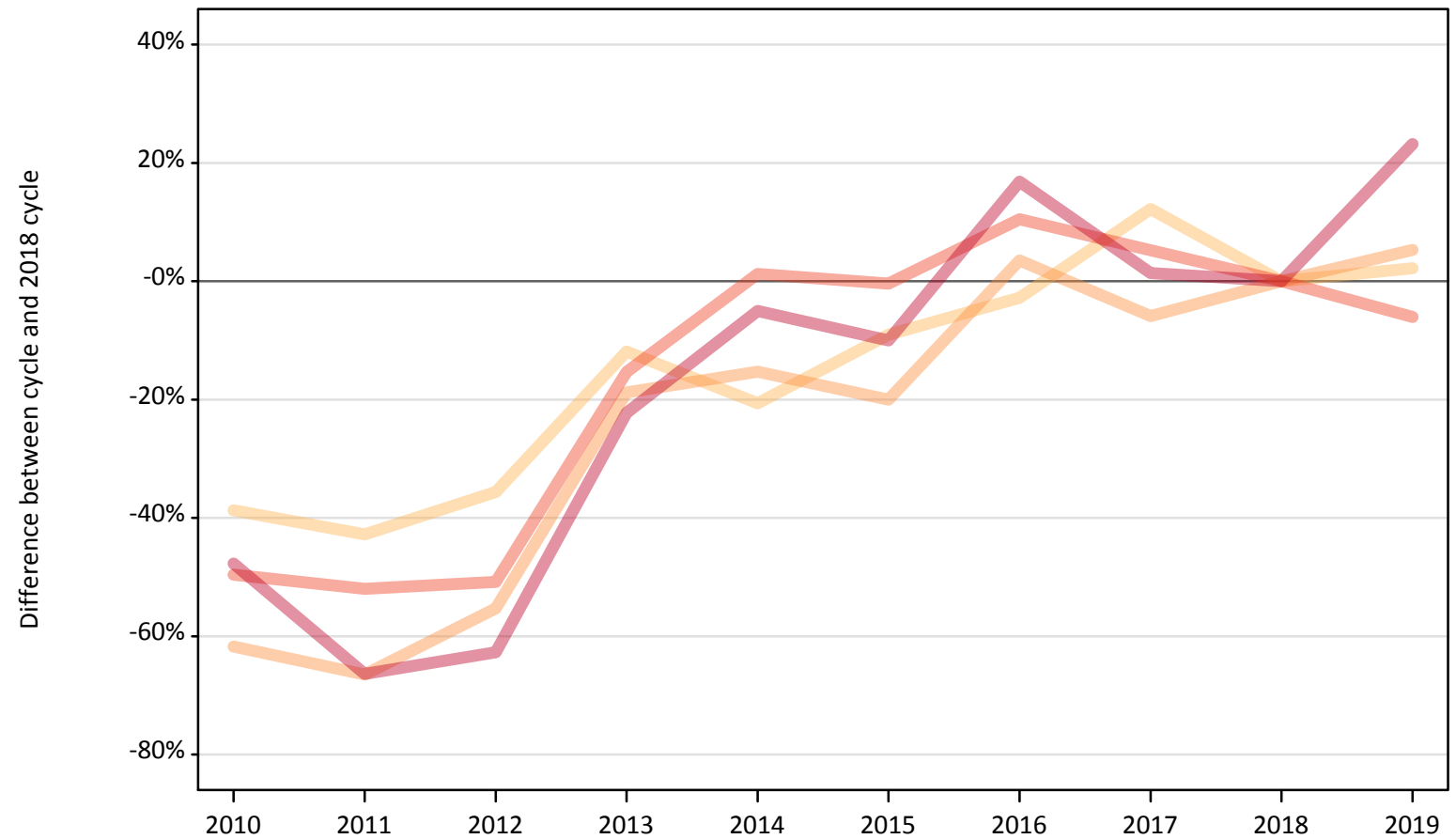
| Domicile of applicant | Age group    | 2010 | 2011 | 2012 | 2013 | 2014 | 2015 | 2016 | 2017 | 2018 | 2019 |
|-----------------------|--------------|------|------|------|------|------|------|------|------|------|------|
| England               | 17 and under |      |      |      |      |      |      |      |      |      |      |
|                       | 18           | -13% | -23% | -19% | -24% | -20% | -17% | -14% | -6%  | 0%   | 8%   |
|                       | 19           | -3%  | -9%  | -13% | -1%  | 8%   | 6%   | 12%  | 10%  | 0%   | 4%   |
|                       | 20 to 24     | 18%  | 2%   | 3%   | 9%   | 23%  | 20%  | 21%  | 7%   | 0%   | -3%  |
|                       | 25 and over  | 12%  | -6%  | -7%  | -8%  | 3%   | -1%  | 15%  | 3%   | 0%   | 5%   |

Note: The percentage change is not recorded in the above table for groups with fewer than 10 placed applicants in that cycle or in the 2018 cycle.

## CB.6 Placed applicants to nursing from Northern Ireland by age group at 7 days after A level results day

Selected age groups: difference between cycle and 2018 cycle

- 17 and under
- 18
- 19
- 20 to 24
- 25 and over



Note: The percentage change is not plotted in the above chart for groups with fewer than 30 placed applicants in any one cycle.

**CB.7 Placed applicants to nursing from Northern Ireland by age group at 7 days after A level results day**

All age groups

| Domicile of applicant | Age group    | 2010 | 2011 | 2012 | 2013 | 2014 | 2015 | 2016 | 2017 | 2018 | 2019 |
|-----------------------|--------------|------|------|------|------|------|------|------|------|------|------|
| Northern Ireland      | 17 and under | 0    | 0    | 0    | 0    | 0    | 0    | 0    | 0    | 0    | 0    |
|                       | 18           | 200  | 180  | 210  | 280  | 250  | 290  | 310  | 360  | 320  | 330  |
|                       | 19           | 70   | 60   | 80   | 140  | 140  | 140  | 180  | 160  | 170  | 180  |
|                       | 20 to 24     | 130  | 120  | 120  | 210  | 250  | 250  | 270  | 260  | 250  | 230  |
|                       | 25 and over  | 120  | 70   | 80   | 170  | 210  | 200  | 260  | 220  | 220  | 270  |

**CB.8 Placed applicants to nursing from Northern Ireland by age group at 7 days after A level results day**

Selected age groups: difference between cycle and 2018 cycle

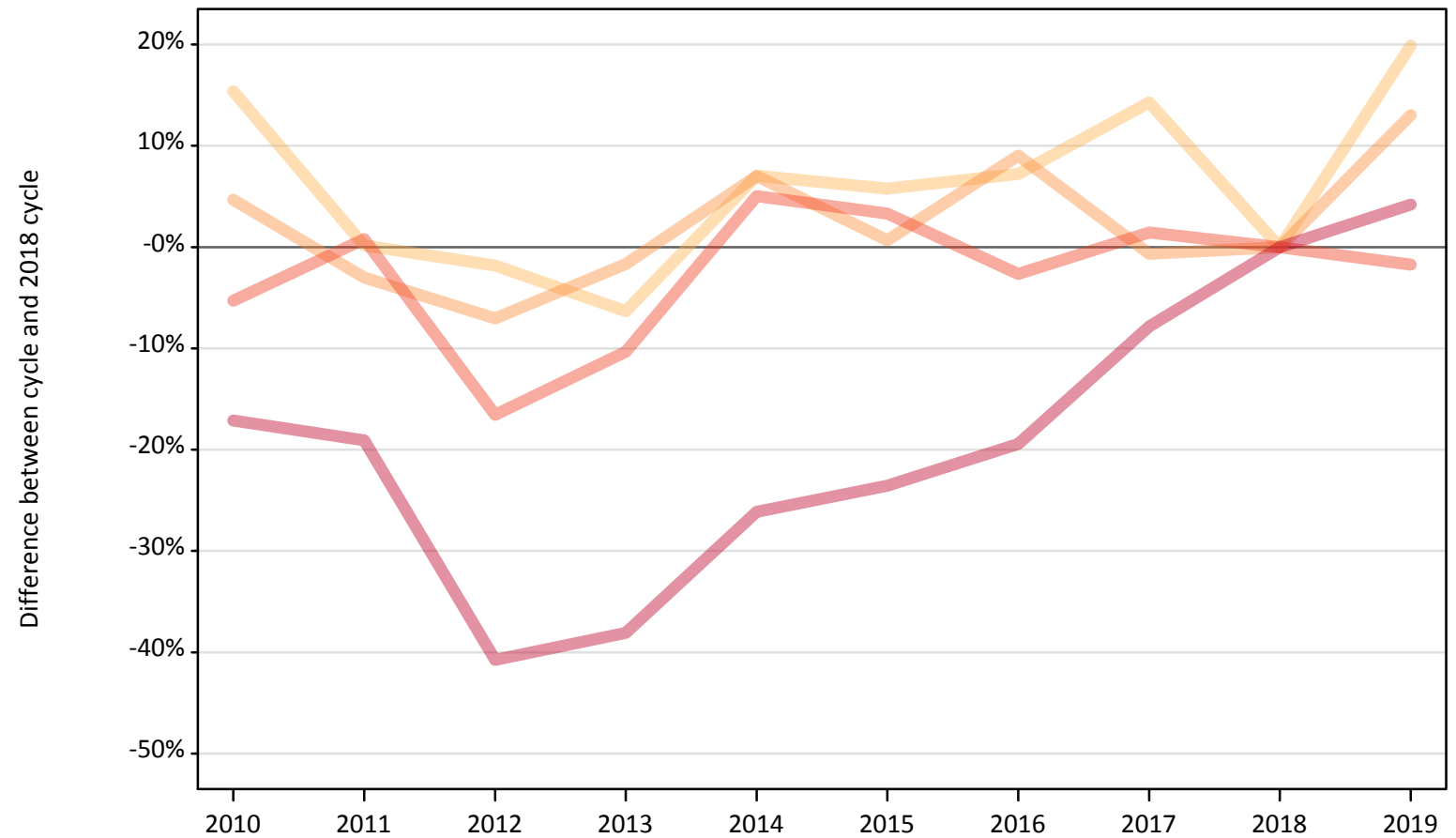
| Domicile of applicant | Age group    | 2010 | 2011 | 2012 | 2013 | 2014 | 2015 | 2016 | 2017 | 2018 | 2019 |
|-----------------------|--------------|------|------|------|------|------|------|------|------|------|------|
| Northern Ireland      | 17 and under |      |      |      |      |      |      |      |      |      |      |
|                       | 18           | -39% | -43% | -36% | -12% | -21% | -9%  | -3%  | 12%  | 0%   | 2%   |
|                       | 19           | -62% | -66% | -55% | -19% | -15% | -20% | 4%   | -6%  | 0%   | 5%   |
|                       | 20 to 24     | -50% | -52% | -51% | -15% | 1%   | -0%  | 10%  | 5%   | 0%   | -6%  |
|                       | 25 and over  | -48% | -66% | -63% | -22% | -5%  | -10% | 17%  | 1%   | 0%   | 23%  |

Note: The percentage change is not recorded in the above table for groups with fewer than 10 placed applicants in that cycle or in the 2018 cycle.

## CB.9 Placed applicants to nursing from Scotland by age group at 7 days after A level results day

Selected age groups: difference between cycle and 2018 cycle

- 17 and under
- 18
- 19
- 20 to 24
- 25 and over



Note: The percentage change is not plotted in the above chart for groups with fewer than 30 placed applicants in any one cycle.

### CB.10 Placed applicants to nursing from Scotland by age group at 7 days after A level results day

All age groups

| Domicile of applicant | Age group    | 2010  | 2011  | 2012 | 2013 | 2014  | 2015  | 2016  | 2017  | 2018  | 2019  |
|-----------------------|--------------|-------|-------|------|------|-------|-------|-------|-------|-------|-------|
| Scotland              | 17 and under | 40    | 20    | 20   | 20   | 20    | 10    | 20    | 20    | 10    | 20    |
|                       | 18           | 640   | 550   | 540  | 520  | 590   | 590   | 590   | 630   | 550   | 660   |
|                       | 19           | 310   | 290   | 280  | 290  | 320   | 300   | 330   | 300   | 300   | 340   |
|                       | 20 to 24     | 720   | 760   | 630  | 680  | 790   | 780   | 740   | 770   | 760   | 740   |
|                       | 25 and over  | 1,190 | 1,160 | 850  | 890  | 1,060 | 1,090 | 1,150 | 1,320 | 1,430 | 1,490 |

### CB.11 Placed applicants to nursing from Scotland by age group at 7 days after A level results day

Selected age groups: difference between cycle and 2018 cycle

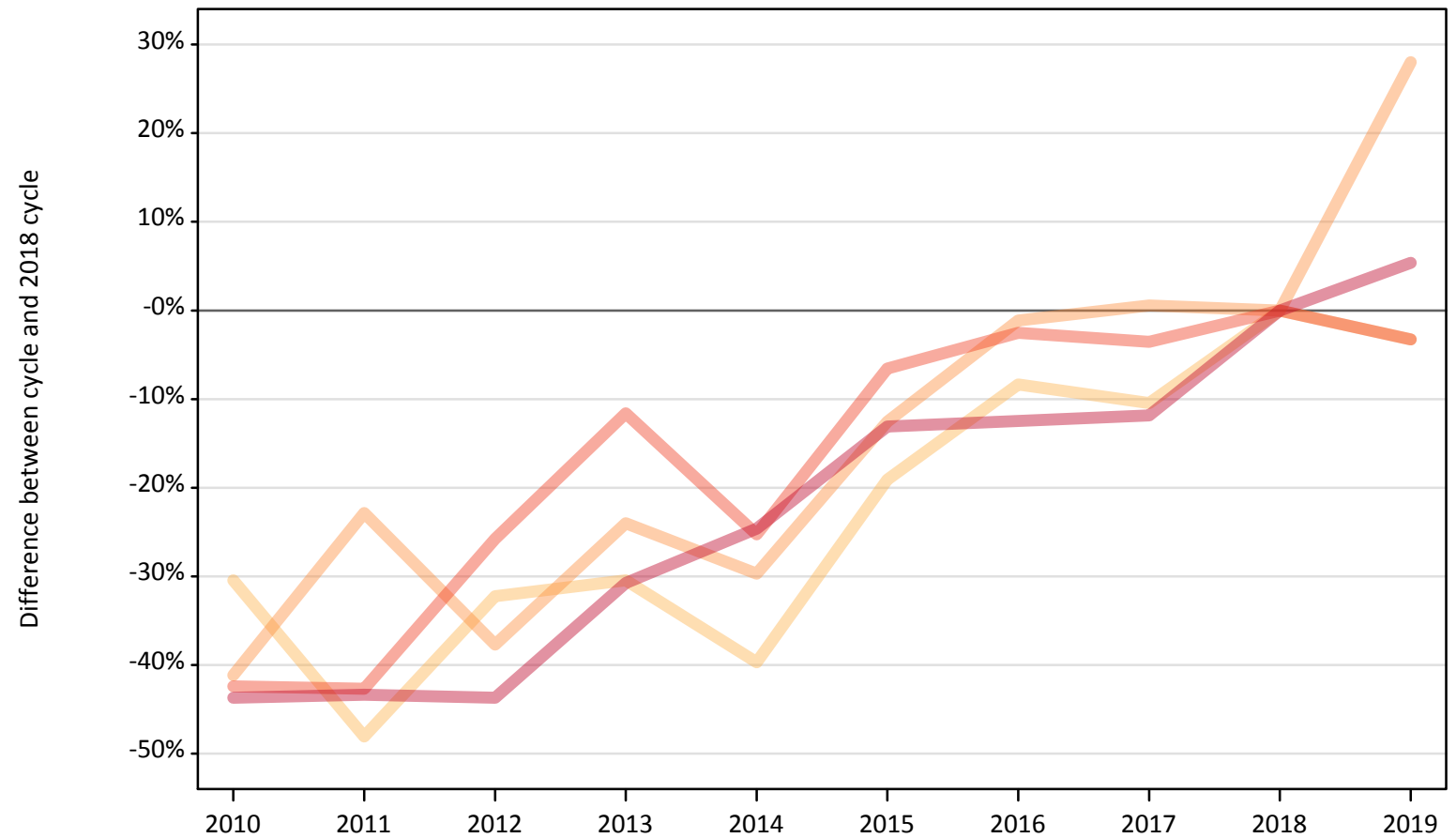
| Domicile of applicant | Age group    | 2010 | 2011 | 2012 | 2013 | 2014 | 2015 | 2016 | 2017 | 2018 | 2019 |
|-----------------------|--------------|------|------|------|------|------|------|------|------|------|------|
| Scotland              | 17 and under | 193% | 64%  | 57%  | 43%  | 21%  | -14% | 14%  | 50%  | 0%   | 50%  |
|                       | 18           | 15%  | 0%   | -2%  | -6%  | 7%   | 6%   | 7%   | 14%  | 0%   | 20%  |
|                       | 19           | 5%   | -3%  | -7%  | -2%  | 7%   | 1%   | 9%   | -1%  | 0%   | 13%  |
|                       | 20 to 24     | -5%  | 1%   | -17% | -10% | 5%   | 3%   | -3%  | 1%   | 0%   | -2%  |
|                       | 25 and over  | -17% | -19% | -41% | -38% | -26% | -24% | -19% | -8%  | 0%   | 4%   |

Note: The percentage change is not recorded in the above table for groups with fewer than 10 placed applicants in that cycle or in the 2018 cycle.

## CB.12 Placed applicants to nursing from Wales by age group at 7 days after A level results day

Selected age groups: difference between cycle and 2018 cycle

- 17 and under
- 18
- 19
- 20 to 24
- 25 and over



Note: The percentage change is not plotted in the above chart for groups with fewer than 30 placed applicants in any one cycle.



### CB.13 Placed applicants to nursing from Wales by age group at 7 days after A level results day

All age groups

| Domicile of applicant | Age group    | 2010 | 2011 | 2012 | 2013 | 2014 | 2015 | 2016 | 2017 | 2018 | 2019 |
|-----------------------|--------------|------|------|------|------|------|------|------|------|------|------|
| Wales                 | 17 and under | 0    | 0    | 0    | 0    | 0    | 0    | 0    | 0    | 0    | 0    |
|                       | 18           | 230  | 170  | 230  | 230  | 200  | 270  | 310  | 300  | 340  | 320  |
|                       | 19           | 100  | 140  | 110  | 130  | 120  | 150  | 170  | 180  | 180  | 220  |
|                       | 20 to 24     | 230  | 230  | 290  | 350  | 300  | 370  | 390  | 380  | 400  | 380  |
|                       | 25 and over  | 360  | 360  | 360  | 440  | 480  | 550  | 560  | 560  | 630  | 670  |

### CB.14 Placed applicants to nursing from Wales by age group at 7 days after A level results day

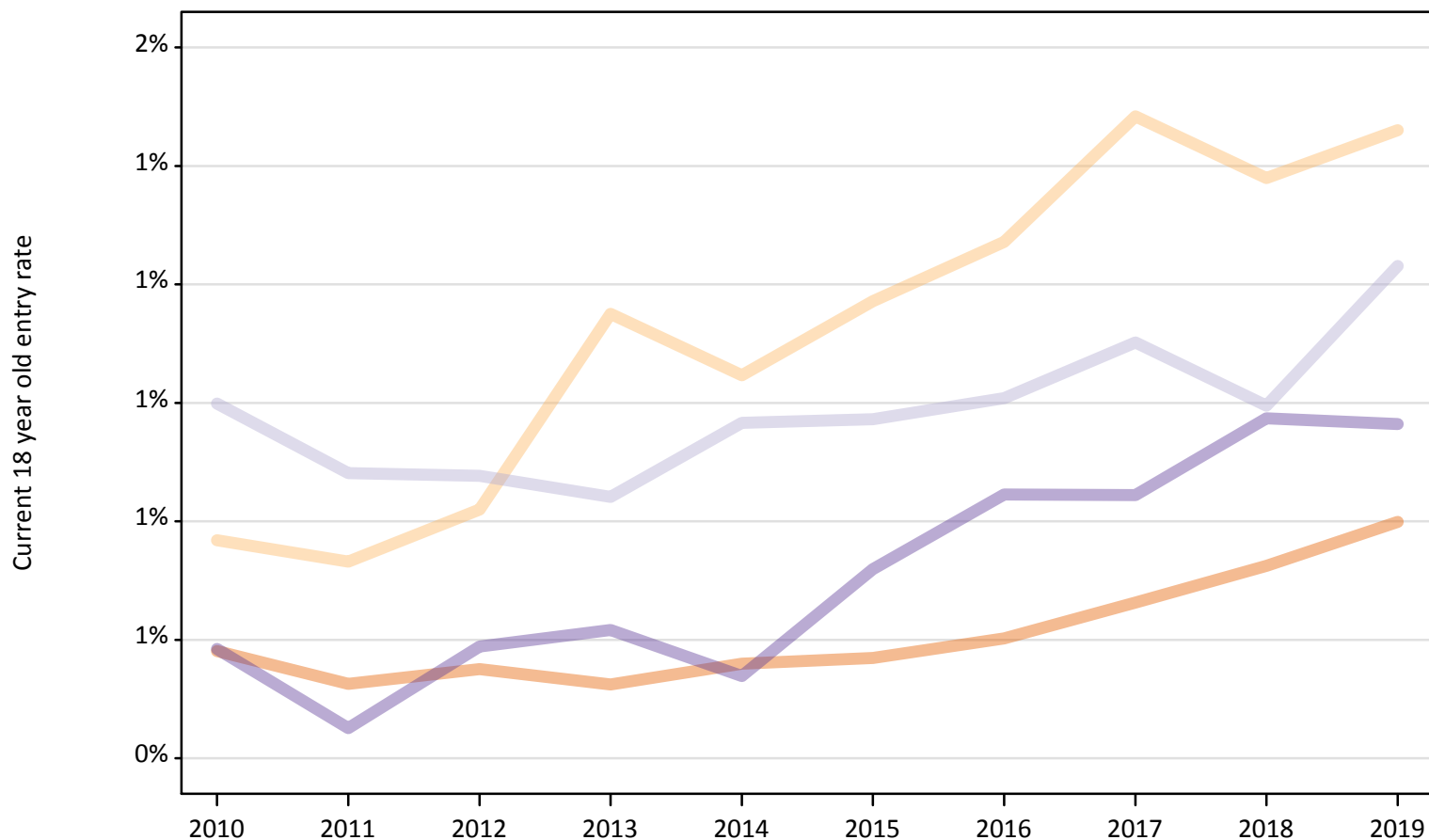
Selected age groups: difference between cycle and 2018 cycle

| Domicile of applicant | Age group    | 2010 | 2011 | 2012 | 2013 | 2014 | 2015 | 2016 | 2017 | 2018 | 2019 |
|-----------------------|--------------|------|------|------|------|------|------|------|------|------|------|
| Wales                 | 17 and under |      |      |      |      |      |      |      |      |      |      |
|                       | 18           | -30% | -48% | -32% | -30% | -40% | -19% | -8%  | -10% | 0%   | -3%  |
|                       | 19           | -41% | -23% | -38% | -24% | -30% | -13% | -1%  | 1%   | 0%   | 28%  |
|                       | 20 to 24     | -42% | -43% | -26% | -12% | -25% | -7%  | -3%  | -4%  | 0%   | -3%  |
|                       | 25 and over  | -44% | -43% | -44% | -31% | -25% | -13% | -12% | -12% | 0%   | 5%   |

Note: The percentage change is not recorded in the above table for groups with fewer than 10 placed applicants in that cycle or in the 2018 cycle.

### CB.15 Entry rates to nursing for 18 year olds by UK country of domicile: 7 days after A level results day

Placed 18 year old applicants as a proportion of the 18 year old population



### CB.16 Entry rates to nursing for 18 year olds by UK country of domicile: 7 days after A level results day

Placed 18 year old applicants as a proportion of the 18 year old population

| Domicile of applicant | Age group | 2010 | 2011 | 2012 | 2013 | 2014 | 2015 | 2016 | 2017 | 2018 | 2019 |
|-----------------------|-----------|------|------|------|------|------|------|------|------|------|------|
| England               | 18        | 0.6% | 0.5% | 0.6% | 0.5% | 0.6% | 0.6% | 0.6% | 0.7% | 0.7% | 0.8% |
| Northern Ireland      | 18        | 0.8% | 0.7% | 0.8% | 1.2% | 1.0% | 1.2% | 1.3% | 1.5% | 1.4% | 1.5% |
| Scotland              | 18        | 1.0% | 0.9% | 0.9% | 0.8% | 1.0% | 1.0% | 1.0% | 1.1% | 1.0% | 1.2% |
| Wales                 | 18        | 0.6% | 0.5% | 0.6% | 0.6% | 0.5% | 0.7% | 0.8% | 0.8% | 1.0% | 1.0% |