

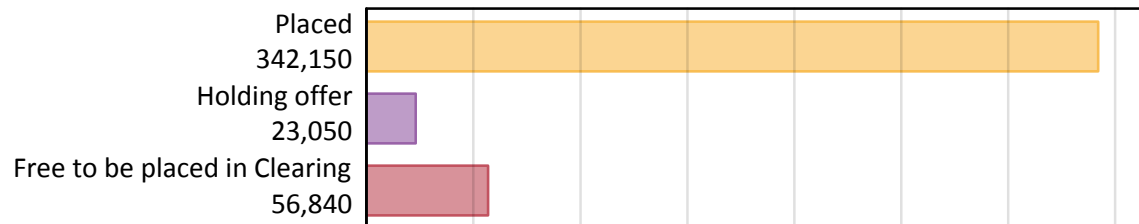
# Daily Clearing Analysis: Overview

Analysis at 00:05 on Friday 23 August 2019 (8 days after A level results day)

## A.1 Applicants by type and status from England, 2019 cycle

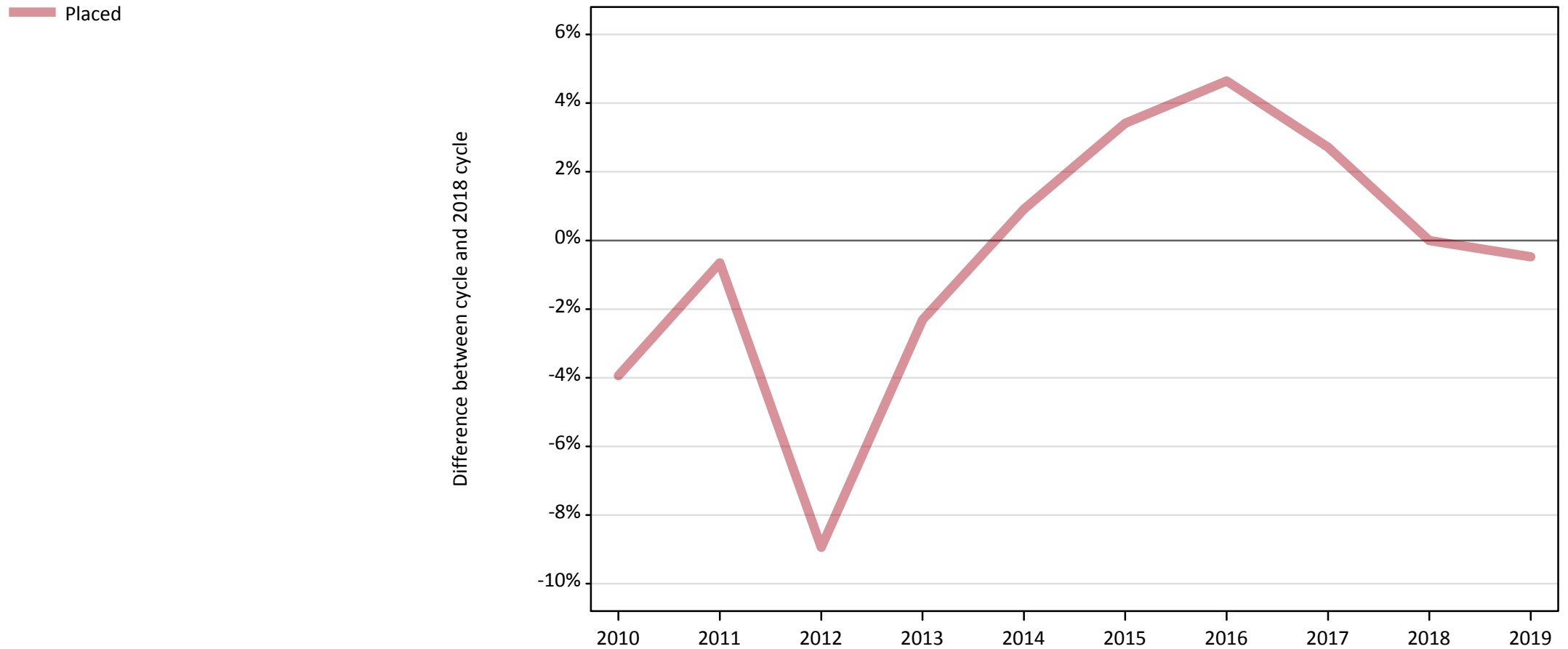
Applicant type	Status	2019
Main scheme	Placed (Clearing)	35,410
	Placed (Adjustment)	500
	Placed (Firm)	264,530
	Placed (Insurance)	24,780
	Placed (Other)	9,060
	Holding offer	23,050
	Free to be placed in Clearing	56,840
Direct to Clearing	Placed (Direct to Clearing)	7,880
	Other (Direct to Clearing)	6,600
All applicants	Placed	342,150

## A.2 Summary of applicants who are placed, holding offers or free to be placed in Clearing ( England )



### A.3 All placed applicants from England: 8 days after A level results day

All placed applicants: difference between cycle and 2018 cycle



Note: The percentage change is not plotted in the above chart for groups with fewer than 30 placed applicants in any one cycle.

#### A.4 All placed applicants from England: 8 days after A level results day

All placed applicants: applicants at 8 days after A level results day

Applicant type	Status	2010	2011	2012	2013	2014	2015	2016	2017	2018	2019
All applicants	Placed	330,250	341,540	313,060	335,850	346,940	355,540	359,780	353,140	343,800	342,150

#### A.5 All placed applicants from England: 8 days after A level results day

All placed applicants: difference between cycle and 2018 cycle

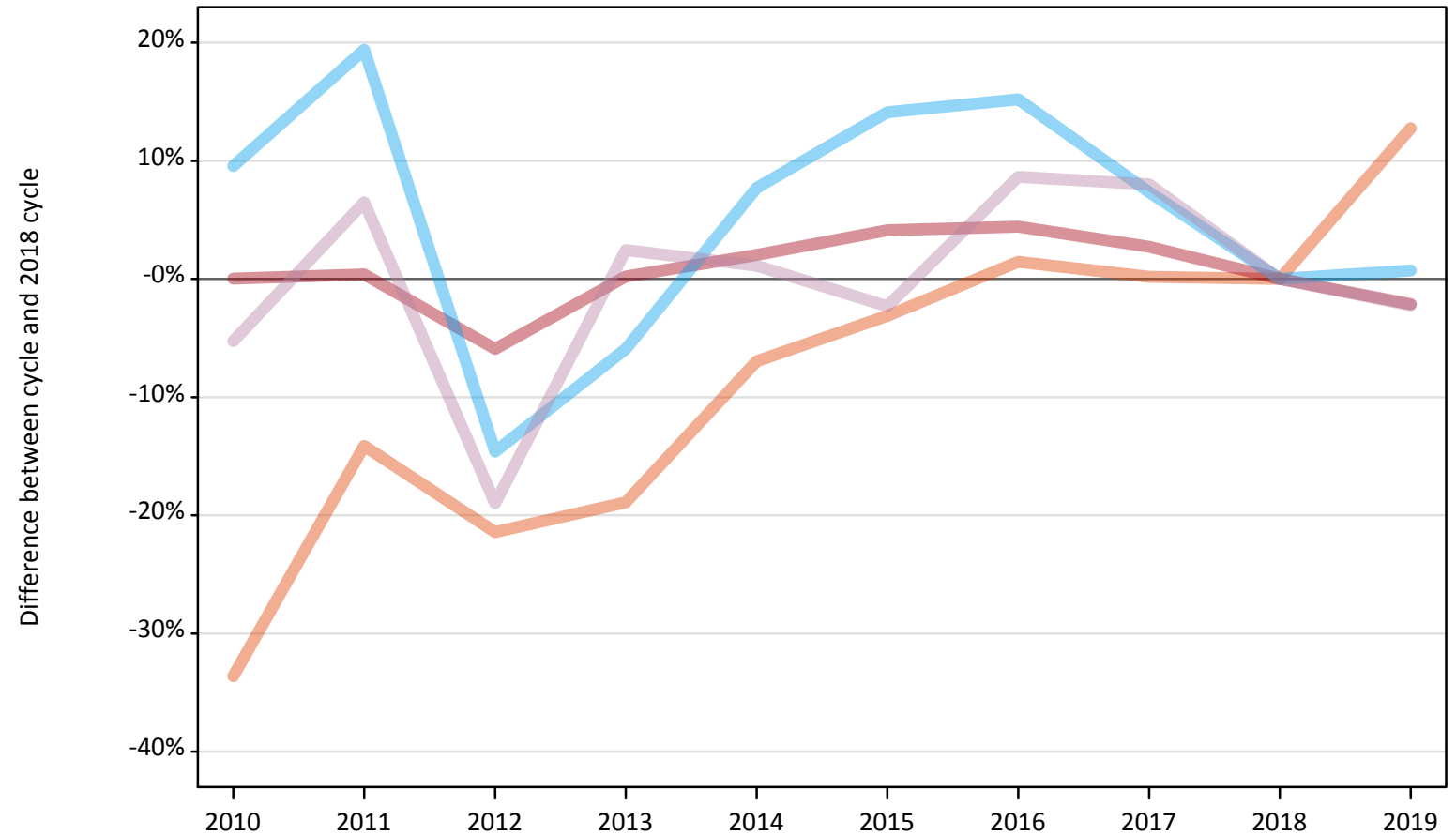
Applicant type	Status	2010	2011	2012	2013	2014	2015	2016	2017	2018	2019
All applicants	Placed	-4%	-1%	-9%	-2%	1%	3%	5%	3%	0%	-0%

Note: The percentage change is not recorded in the above table for groups with fewer than 10 placed applicants in that cycle or in the 2018 cycle.

## A.6 Placed main scheme applicants from England: 8 days after A level results day

All Main scheme placed routes (excluding Adjustment): difference between cycle and 2018 cycle

- Placed (Clearing)
- Placed (Firm)
- Placed (Insurance)
- Placed (Other)



Note: The percentage change is not plotted in the above chart for groups with fewer than 30 placed applicants in any one cycle.

### A.7 Placed main scheme applicants from England: 8 days after A level results day

All Main scheme placed routes (excluding Adjustment): applicants at 8 days after A level results day

Applicant type	Status	2010	2011	2012	2013	2014	2015	2016	2017	2018	2019
Main scheme	Placed (Clearing)	20,840	26,970	24,670	25,460	29,210	30,420	31,850	31,450	31,400	35,410
	Placed (Firm)	270,360	271,340	254,260	270,800	275,750	281,410	282,250	277,640	270,280	264,530
	Placed (Insurance)	26,950	29,370	21,010	23,140	26,500	28,070	28,340	26,400	24,600	24,780
	Placed (Other)	8,780	9,870	7,510	9,490	9,370	9,050	10,070	10,010	9,260	9,060

### A.8 Placed main scheme applicants from England: 8 days after A level results day

All Main scheme placed routes (excluding Adjustment): difference between cycle and 2018 cycle

Applicant type	Status	2010	2011	2012	2013	2014	2015	2016	2017	2018	2019
Main scheme	Placed (Clearing)	-34%	-14%	-21%	-19%	-7%	-3%	1%	0%	0%	13%
	Placed (Firm)	0%	0%	-6%	0%	2%	4%	4%	3%	0%	-2%
	Placed (Insurance)	10%	19%	-15%	-6%	8%	14%	15%	7%	0%	1%
	Placed (Other)	-5%	6%	-19%	2%	1%	-2%	9%	8%	0%	-2%

Note: The percentage change is not recorded in the above table for groups with fewer than 10 placed applicants in that cycle or in the 2018 cycle.

## A.9 Main scheme applicants placed through adjustment: 8 days after A level results day

Placed through adjustment: difference between cycle and 2018 cycle

Placed (Adjustment)



Note: The percentage change is not plotted in the above chart for groups with fewer than 30 placed applicants in any one cycle.

### A.10 Main scheme applicants placed through adjustment: 8 days after A level results day

Placed through adjustment: applicants at 8 days after A level results day

Applicant type	Status	2010	2011	2012	2013	2014	2015	2016	2017	2018	2019
Main scheme	Placed (Adjustment)	290	470	1,180	1,070	1,000	990	760	900	780	500

### A.11 Main scheme applicants placed through adjustment: 8 days after A level results day

Placed through adjustment: difference between cycle and 2018 cycle

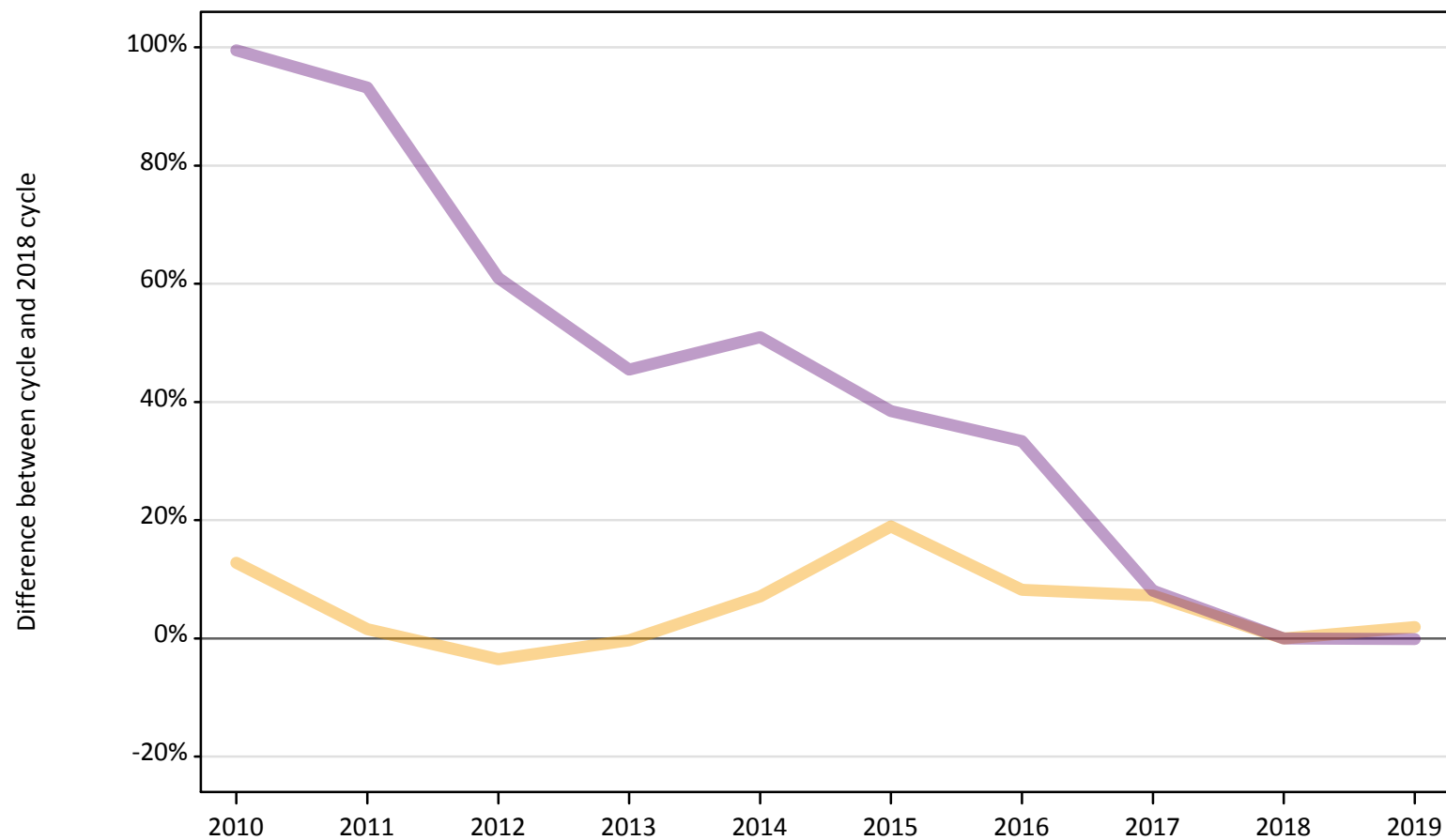
Applicant type	Status	2010	2011	2012	2013	2014	2015	2016	2017	2018	2019
Main scheme	Placed (Adjustment)	-63%	-39%	52%	38%	28%	27%	-2%	16%	0%	-36%

Note: The percentage change is not recorded in the above table for groups with fewer than 10 placed applicants in that cycle or in the 2018 cycle.

## A.12 Main scheme applicants not currently placed from England: 8 days after A level results day

Applicants in unplaced states: difference between cycle and 2018 cycle

— Holding offer  
— Free to be placed in Clearing



Note: The percentage change is not plotted in the above chart for groups with fewer than 30 unplaced applicants in any one cycle.



### A.13 Main scheme applicants not currently placed from England: 8 days after A level results day

Applicants in unplaced states: applicants at 8 days after A level results day

Applicant type	Status	2010	2011	2012	2013	2014	2015	2016	2017	2018	2019
Main scheme	Holding offer	25,530	22,970	21,830	22,550	24,230	26,910	24,480	24,270	22,630	23,050
	Free to be placed in Clearing	113,560	109,970	91,630	82,800	85,940	78,820	75,910	61,510	56,920	56,840

### A.14 Main scheme applicants not currently placed from England: 8 days after A level results day

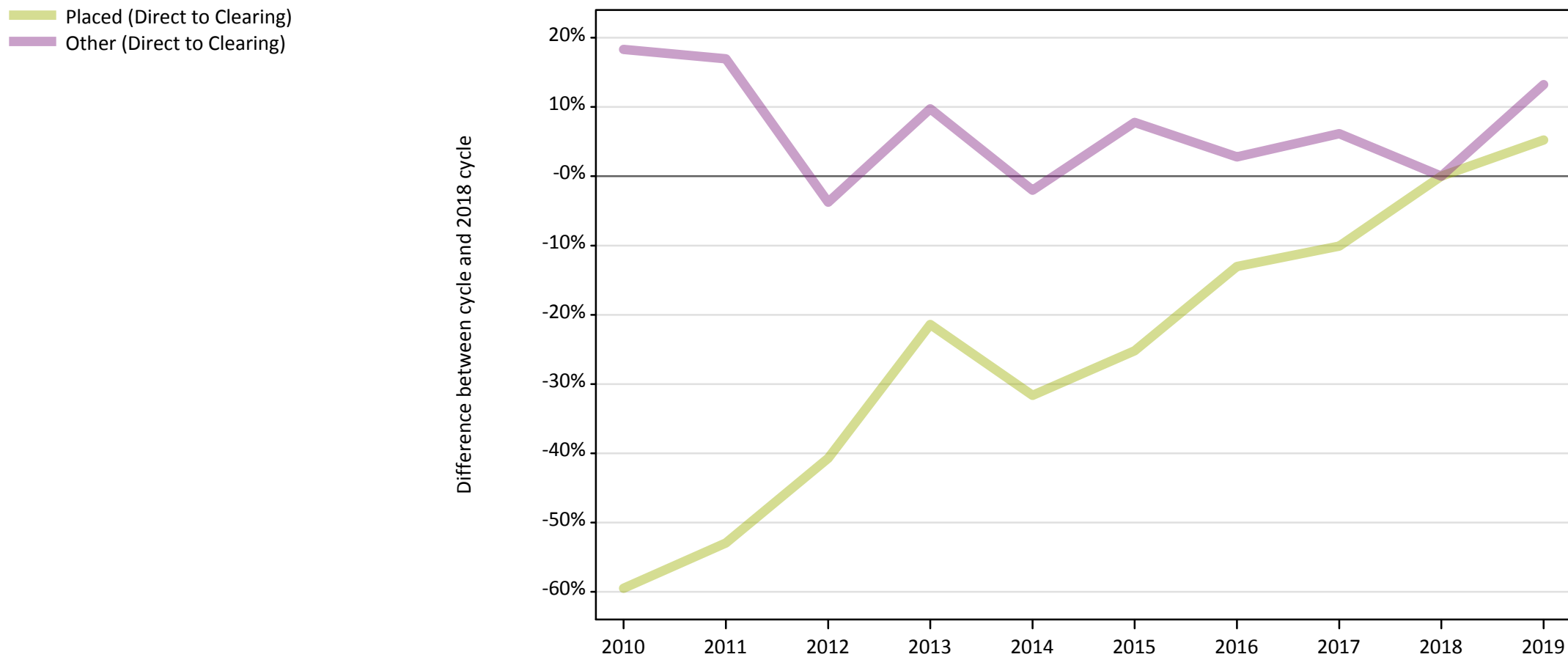
Applicants in unplaced states: difference between cycle and 2018 cycle

Applicant type	Status	2010	2011	2012	2013	2014	2015	2016	2017	2018	2019
Main scheme	Holding offer	13%	2%	-4%	-0%	7%	19%	8%	7%	0%	2%
	Free to be placed in Clearing	99%	93%	61%	45%	51%	38%	33%	8%	0%	-0%

Note: The percentage change is not recorded in the above table for groups with fewer than 10 unplaced applicants in that cycle or in the 2018 cycle.

### A.15 Direct to Clearing applicants from England: 8 days after A level results day

Direct to Clearing: difference between cycle and 2018 cycle



Note: The percentage change is not plotted in the above chart for groups with fewer than 30 placed applicants in any one cycle.

### A.16 Direct to Clearing applicants from England: 8 days after A level results day

Direct to Clearing 8 days after A level results day

Applicant type	Status	2010	2011	2012	2013	2014	2015	2016	2017	2018	2019
Direct to Clearing	Placed (Direct to Clearing)	3,030	3,520	4,440	5,890	5,120	5,600	6,510	6,730	7,490	7,880
	Other (Direct to Clearing)	6,890	6,810	5,610	6,390	5,710	6,280	5,990	6,180	5,830	6,600

### A.17 Direct to Clearing applicants from England: 8 days after A level results day

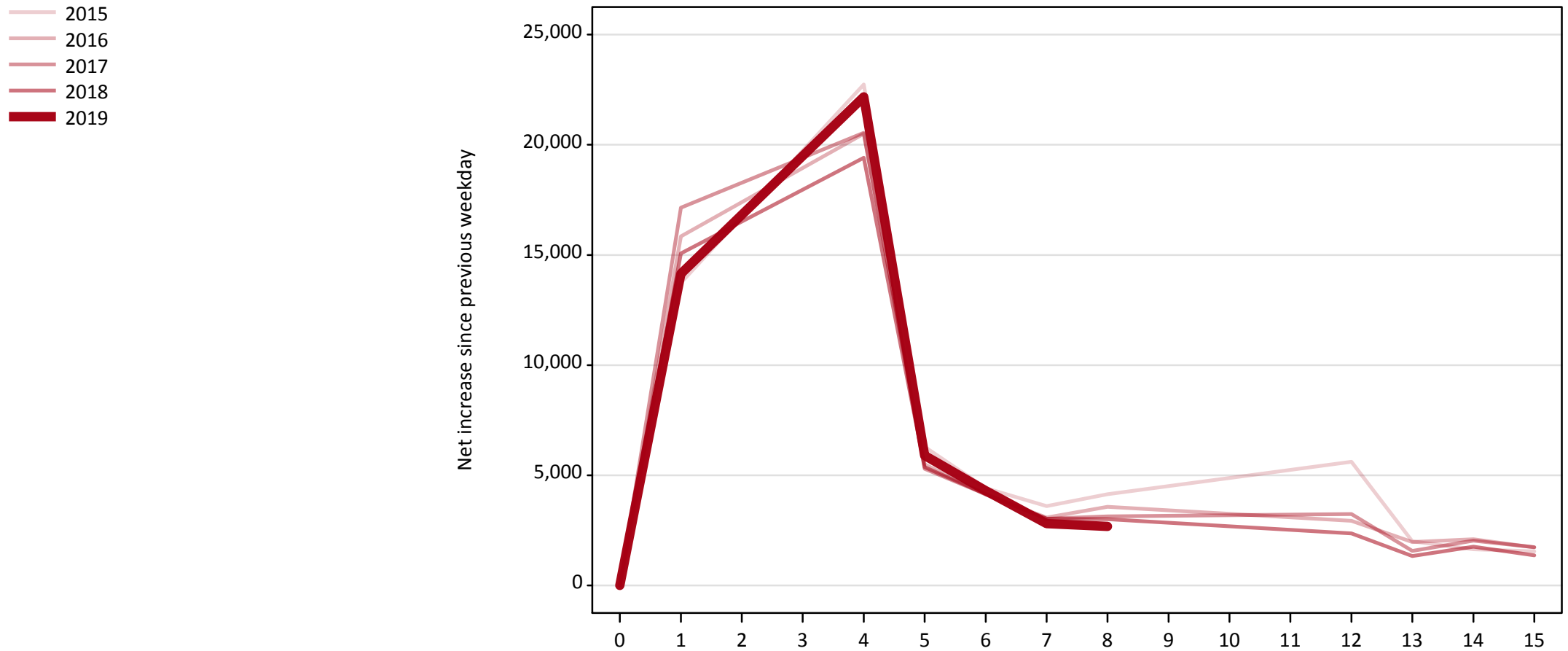
Direct to Clearing: difference between cycle and 2018 cycle

Applicant type	Status	2010	2011	2012	2013	2014	2015	2016	2017	2018	2019
Direct to Clearing	Placed (Direct to Clearing)	-60%	-53%	-41%	-21%	-32%	-25%	-13%	-10%	0%	5%
	Other (Direct to Clearing)	18%	17%	-4%	10%	-2%	8%	3%	6%	0%	13%

Note: The percentage change is not recorded in the above table for groups with fewer than 10 placed applicants in that cycle or in the 2018 cycle.

### A.18 All Placed: Daily net change (from England)

Net increase since previous weekday (2019 cycle up to 8 days after A level results day)

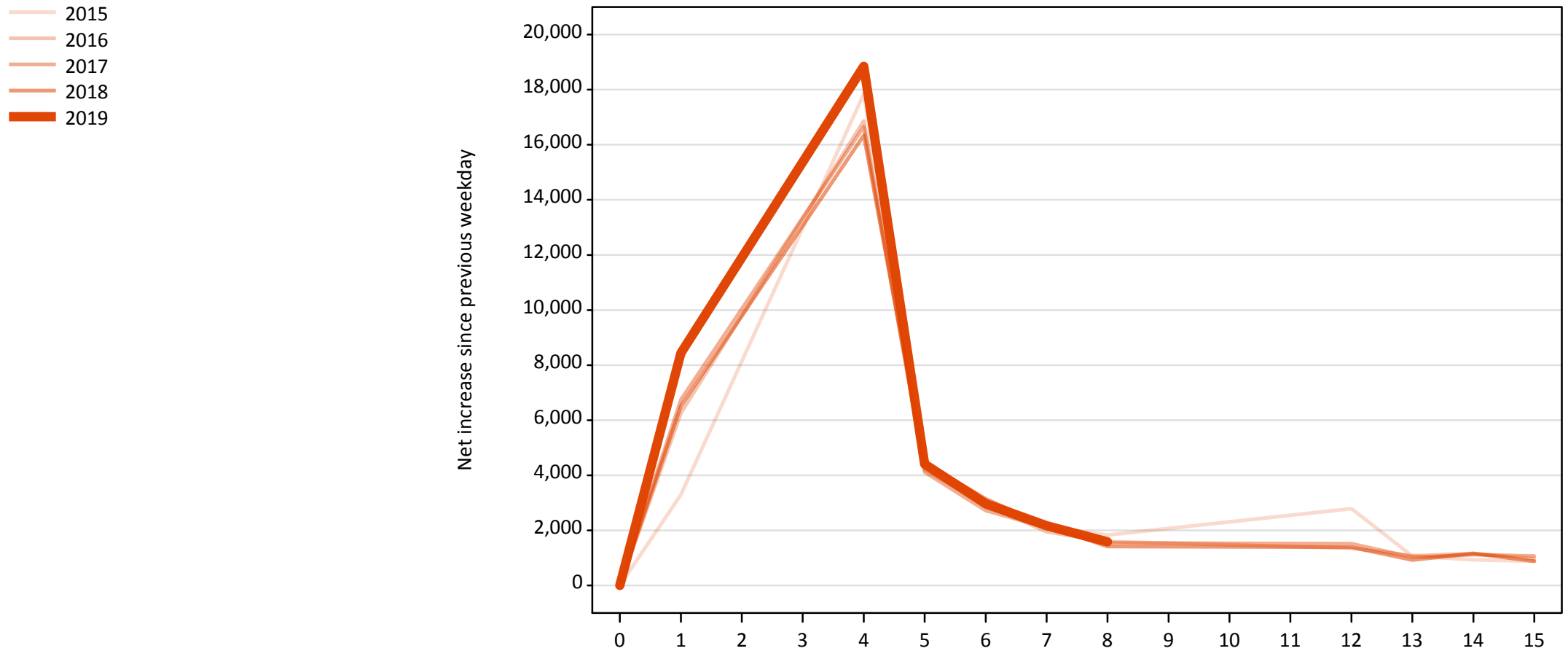


**A.19 All Placed: Daily net change (from England)**

Net increase since previous weekday (2019 cycle up to 8 days after A level results day)

Applicant status, days since A level results day	2015	2016	2017	2018	2019	
All Placed	0	0	0	0	0	
	1	13,730	15,840	17,150	15,070	14,150
	4	22,730	20,500	20,540	19,410	22,170
	5	6,300	5,500	5,300	5,370	5,900
	6	4,410	4,120	4,140	4,150	4,300
	7	3,600	3,080	3,030	3,030	2,800
	8	4,140	3,570	3,130	3,010	2,680
	12	5,610	2,940	3,240	2,360	
	13	2,000	1,970	1,560	1,340	
	14	1,640	2,100	2,030	1,760	
	15	1,540	1,730	1,740	1,360	

**A.20 Placed through Clearing only: Daily net change (from England)**  
Net increase since previous weekday (2019 cycle up to 8 days after A level results day)



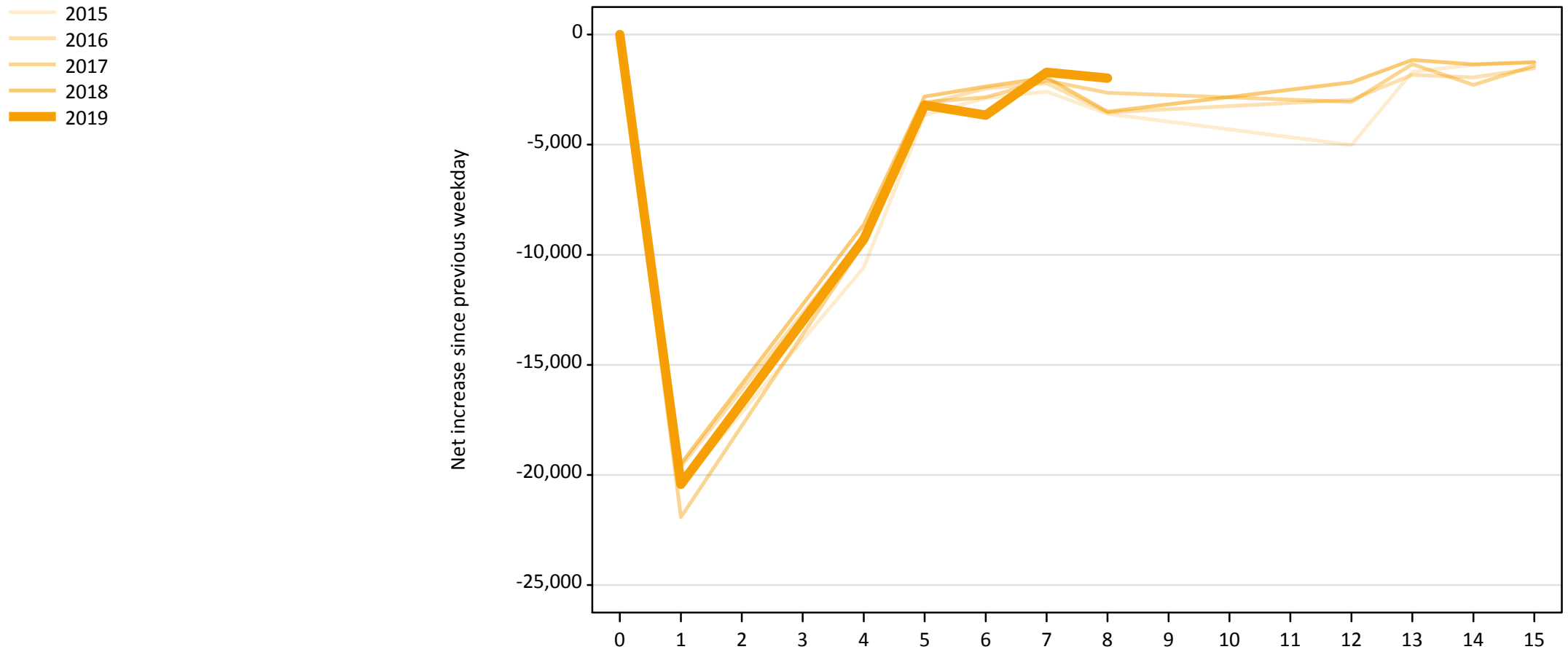
### A.21 Placed through Clearing only: Daily net change (from England)

Net increase since previous weekday (2019 cycle up to 8 days after A level results day)

Applicant status, days since A level results day		2015	2016	2017	2018	2019
Placed through Clearing only	0	0	0	0	0	0
	1	3,300	6,260	6,740	6,510	8,440
	4	17,850	16,870	16,660	16,340	18,850
	5	4,470	4,190	4,120	4,470	4,410
	6	2,830	2,940	2,720	3,150	2,970
	7	2,140	1,950	2,100	2,160	2,170
	8	1,830	1,590	1,540	1,410	1,580
	12	2,790	1,360	1,510	1,390	
	13	1,060	1,080	1,020	920	
	14	930	1,160	1,120	1,160	
	15	880	970	1,060	880	

## A.22 Holding Offer: Daily net change (from England)

Net increase since previous weekday (2019 cycle up to 8 days after A level results day)



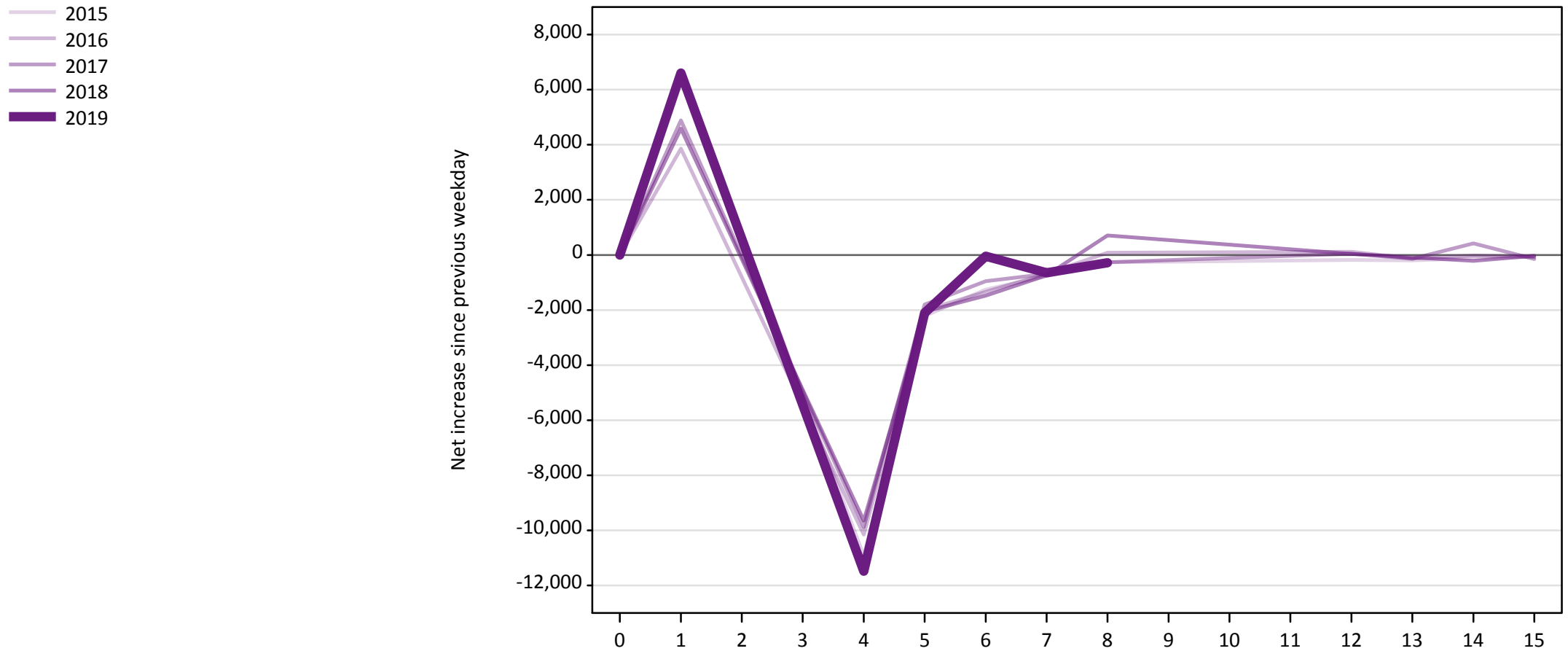


### A.23 Holding Offer: Daily net change (from England)

Net increase since previous weekday (2019 cycle up to 8 days after A level results day)

Applicant status, days since A level results day	2015	2016	2017	2018	2019	
Holding Offer	0	0	0	0	0	
	1	-20,460	-19,620	-21,920	-19,500	-20,430
	4	-10,580	-9,160	-9,470	-8,630	-9,300
	5	-3,660	-3,160	-3,060	-2,820	-3,210
	6	-2,870	-2,450	-2,840	-2,360	-3,660
	7	-2,590	-2,210	-2,080	-1,960	-1,720
	8	-3,590	-3,540	-2,650	-3,510	-1,980
	12	-5,010	-2,970	-3,060	-2,170	
	13	-1,690	-1,830	-1,340	-1,160	
	14	-1,370	-1,950	-2,290	-1,360	
	15	-1,280	-1,530	-1,420	-1,240	

**A.24 Free to be placed in Clearing: Daily net change (from England)**  
Net increase since previous weekday (2019 cycle up to 8 days after A level results day)



**A.25 Free to be placed in Clearing: Daily net change (from England)**

Net increase since previous weekday (2019 cycle up to 8 days after A level results day)

Applicant status, days since A level results day		2015	2016	2017	2018	2019
Free to be placed in Clearing	0	0	0	0	0	0
	1	6,690	3,860	4,890	4,590	6,600
	4	-10,920	-10,160	-9,880	-9,640	-11,480
	5	-2,220	-2,000	-1,800	-2,050	-2,110
	6	-1,260	-1,340	-950	-1,480	-40
	7	-770	-680	-690	-740	-640
	8	-270	80	-270	710	-290
	12	-190	110	50	40	
	13	-200	-130	-140	-90	
	14	-120	-20	420	-220	
	15	-70	-70	-150	-30	