

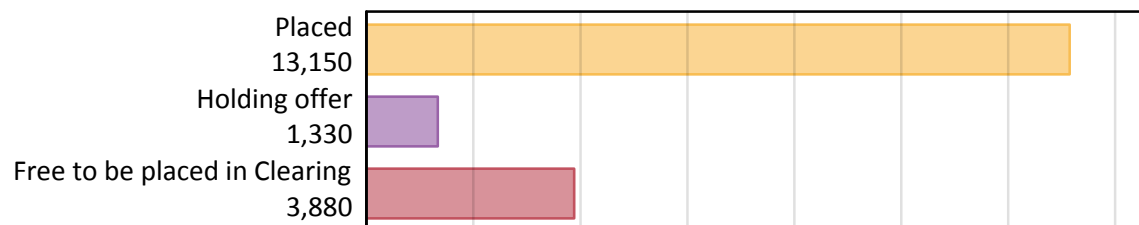
Daily Clearing Analysis: Overview

Analysis at 00:05 on Friday 23 August 2019 (8 days after A level results day)

A.1 Applicants by type and status from Northern Ireland, 2019 cycle

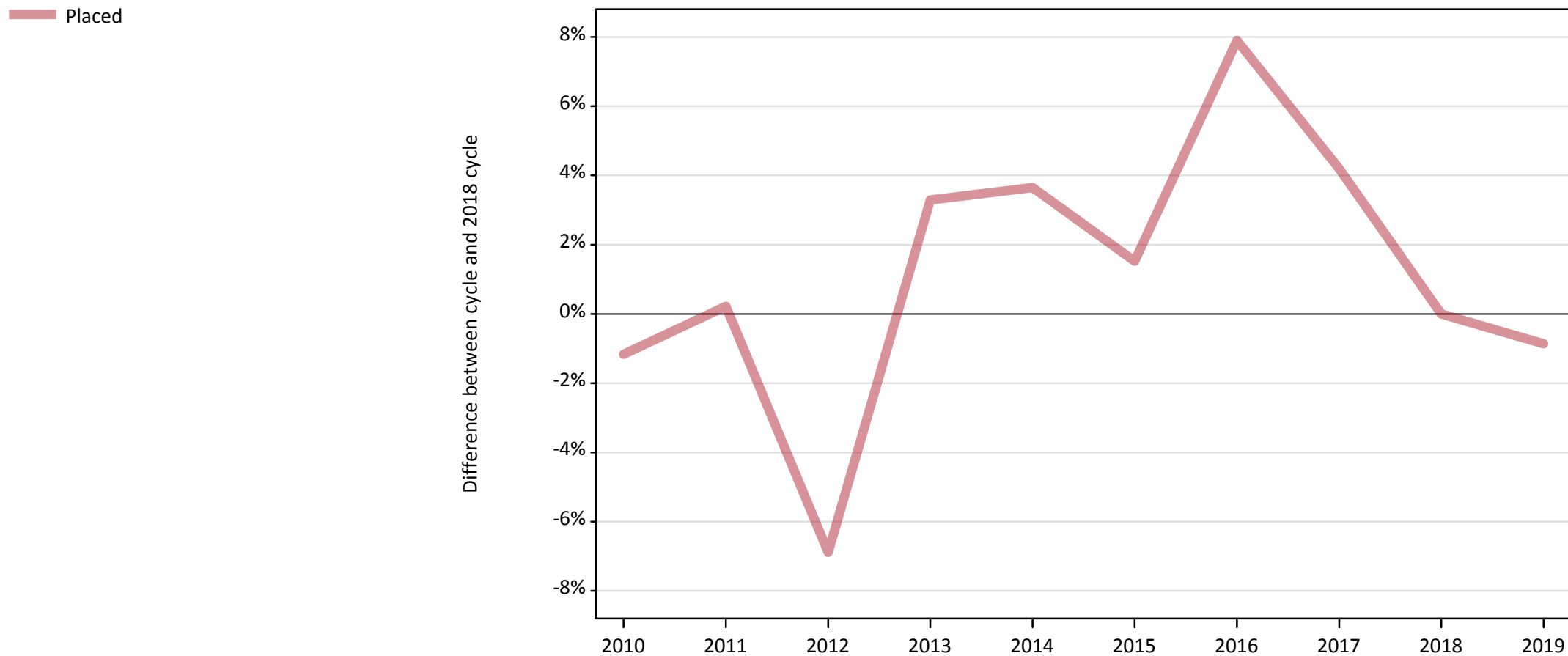
Applicant type	Status	2019
Main scheme	Placed (Clearing)	710
	Placed (Adjustment)	20
	Placed (Firm)	11,240
	Placed (Insurance)	970
	Placed (Other)	140
	Holding offer	1,330
	Free to be placed in Clearing	3,880
Direct to Clearing	Placed (Direct to Clearing)	80
	Other (Direct to Clearing)	90
All applicants	Placed	13,150

A.2 Summary of applicants who are placed, holding offers or free to be placed in Clearing (Northern Ireland)



A.3 All placed applicants from Northern Ireland: 8 days after A level results day

All placed applicants: difference between cycle and 2018 cycle



Note: The percentage change is not plotted in the above chart for groups with fewer than 30 placed applicants in any one cycle.

A.4 All placed applicants from Northern Ireland: 8 days after A level results day

All placed applicants: applicants at 8 days after A level results day

Applicant type	Status	2010	2011	2012	2013	2014	2015	2016	2017	2018	2019
All applicants	Placed	13,110	13,300	12,350	13,700	13,750	13,470	14,320	13,820	13,270	13,150

A.5 All placed applicants from Northern Ireland: 8 days after A level results day

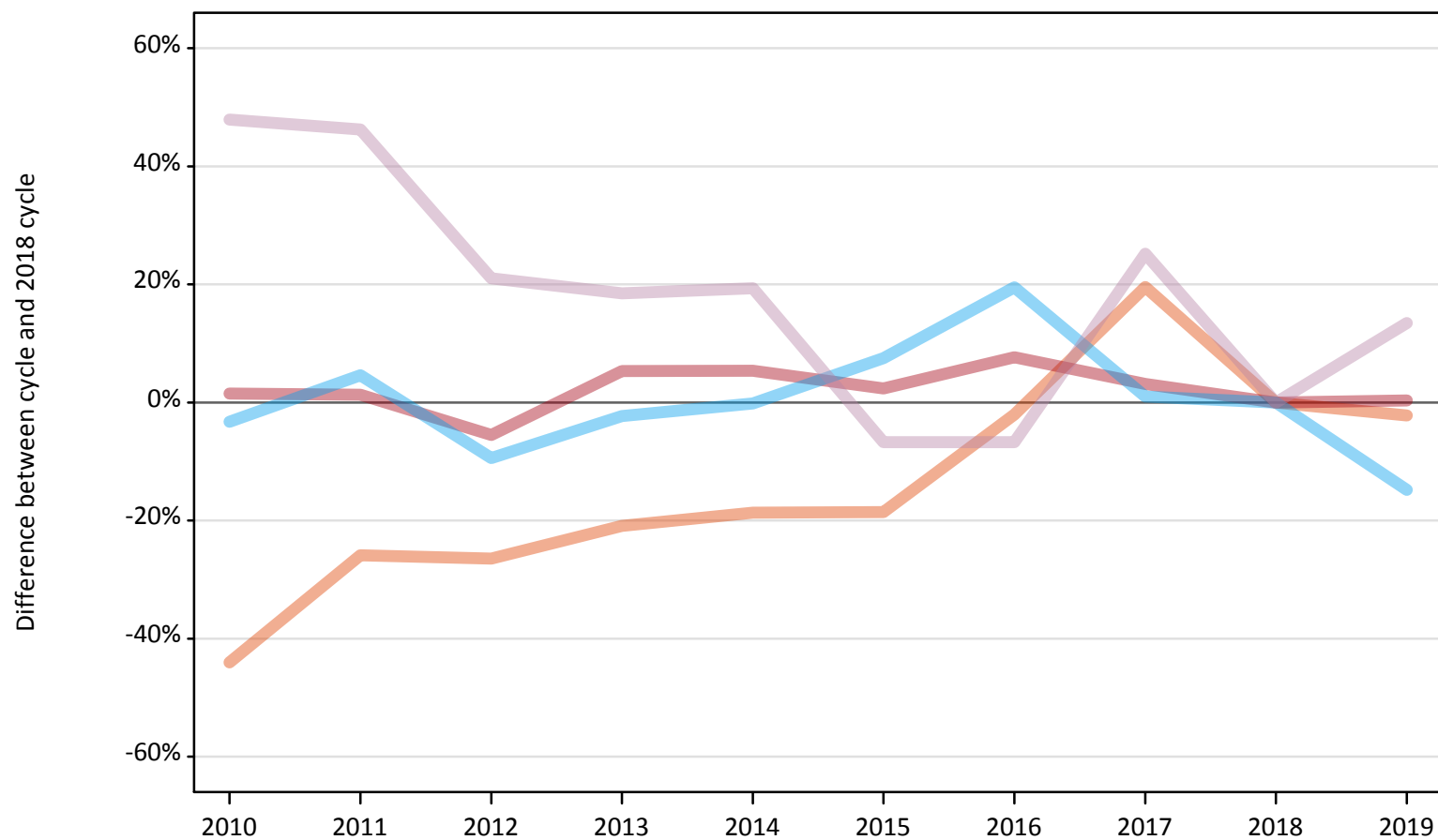
All placed applicants: difference between cycle and 2018 cycle

Applicant type	Status	2010	2011	2012	2013	2014	2015	2016	2017	2018	2019
All applicants	Placed	-1%	0%	-7%	3%	4%	2%	8%	4%	0%	-1%

Note: The percentage change is not recorded in the above table for groups with fewer than 10 placed applicants in that cycle or in the 2018 cycle.

A.6 Placed main scheme applicants from Northern Ireland: 8 days after A level results day
All Main scheme placed routes (excluding Adjustment): difference between cycle and 2018 cycle

- Placed (Clearing)
- Placed (Firm)
- Placed (Insurance)
- Placed (Other)



Note: The percentage change is not plotted in the above chart for groups with fewer than 30 placed applicants in any one cycle.

A.7 Placed main scheme applicants from Northern Ireland: 8 days after A level results day

All Main scheme placed routes (excluding Adjustment): applicants at 8 days after A level results day

Applicant type	Status	2010	2011	2012	2013	2014	2015	2016	2017	2018	2019
Main scheme	Placed (Clearing)	400	540	530	570	590	590	710	860	720	710
	Placed (Firm)	11,370	11,350	10,580	11,800	11,800	11,470	12,060	11,550	11,200	11,240
	Placed (Insurance)	1,100	1,190	1,030	1,110	1,130	1,220	1,350	1,140	1,130	970
	Placed (Other)	180	170	140	140	140	110	110	150	120	140

A.8 Placed main scheme applicants from Northern Ireland: 8 days after A level results day

All Main scheme placed routes (excluding Adjustment): difference between cycle and 2018 cycle

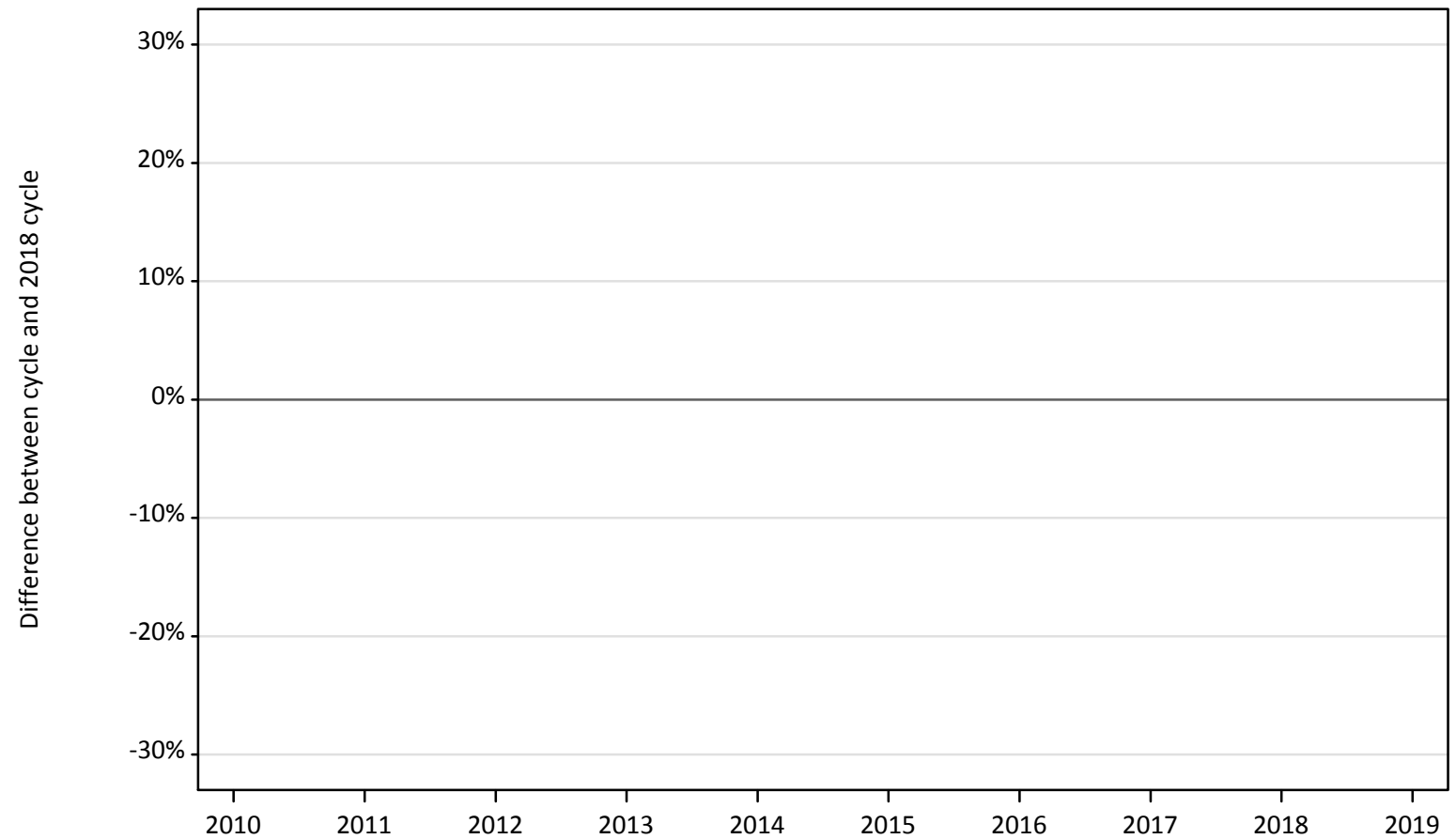
Applicant type	Status	2010	2011	2012	2013	2014	2015	2016	2017	2018	2019
Main scheme	Placed (Clearing)	-44%	-26%	-26%	-21%	-19%	-19%	-2%	20%	0%	-2%
	Placed (Firm)	1%	1%	-6%	5%	5%	2%	8%	3%	0%	0%
	Placed (Insurance)	-3%	5%	-9%	-2%	-0%	8%	20%	1%	0%	-15%
	Placed (Other)	48%	46%	21%	18%	19%	-7%	-7%	25%	0%	13%

Note: The percentage change is not recorded in the above table for groups with fewer than 10 placed applicants in that cycle or in the 2018 cycle.

A.9 Main scheme applicants placed through adjustment: 8 days after A level results day

Placed through adjustment: difference between cycle and 2018 cycle

Placed (Adjustment)



Note: The percentage change is not plotted in the above chart for groups with fewer than 30 placed applicants in any one cycle.

A.10 Main scheme applicants placed through adjustment: 8 days after A level results day

Placed through adjustment: applicants at 8 days after A level results day

Applicant type	Status	2010	2011	2012	2013	2014	2015	2016	2017	2018	2019
Main scheme	Placed (Adjustment)	30	20	30	30	30	40	30	30	20	20

A.11 Main scheme applicants placed through adjustment: 8 days after A level results day

Placed through adjustment: difference between cycle and 2018 cycle

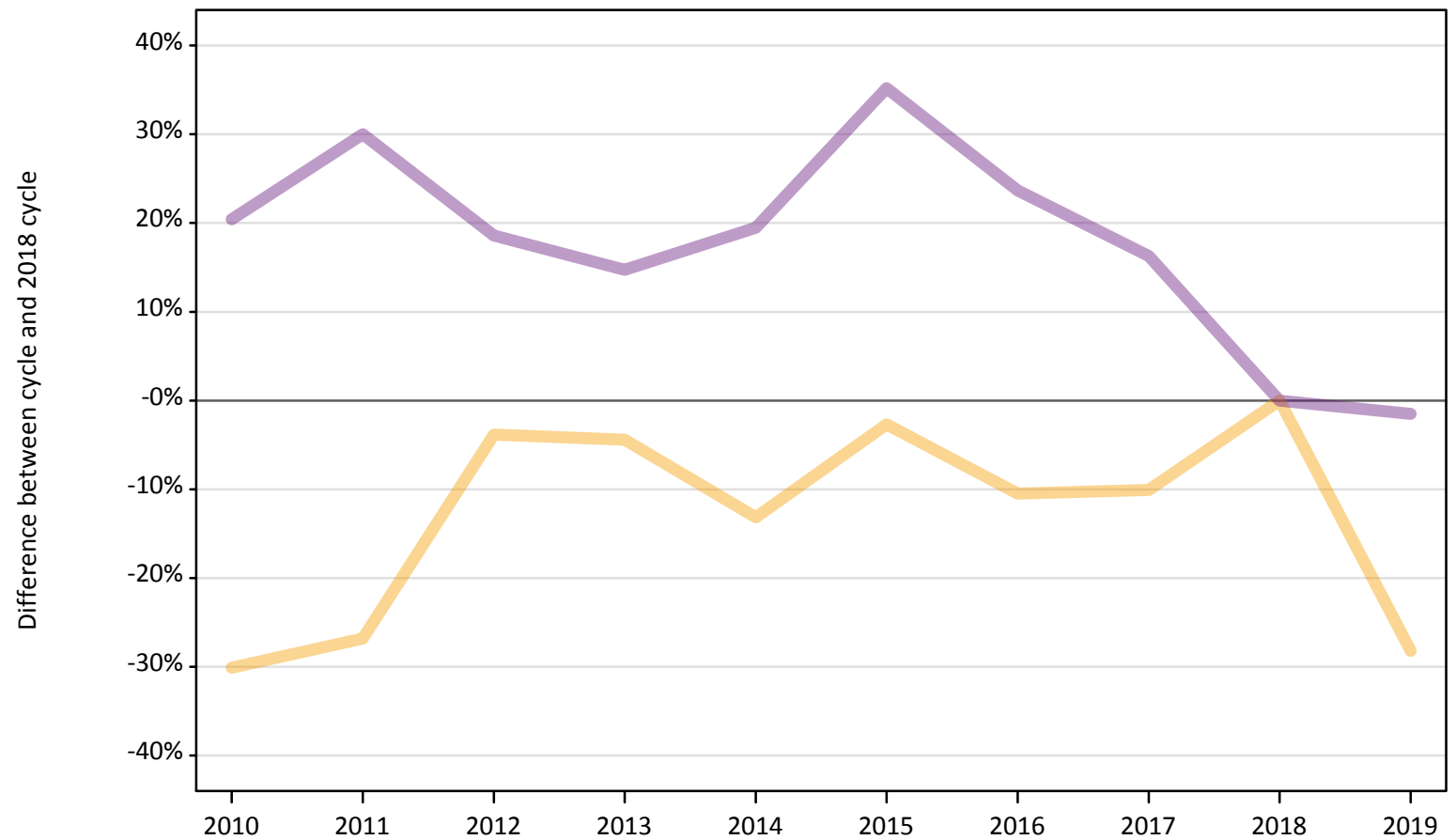
Applicant type	Status	2010	2011	2012	2013	2014	2015	2016	2017	2018	2019
Main scheme	Placed (Adjustment)	25%	-5%	25%	65%	50%	75%	25%	70%	0%	0%

Note: The percentage change is not recorded in the above table for groups with fewer than 10 placed applicants in that cycle or in the 2018 cycle.

A.12 Main scheme applicants not currently placed from Northern Ireland: 8 days after A level results day

Applicants in unplaced states: difference between cycle and 2018 cycle

— Holding offer
— Free to be placed in Clearing



Note: The percentage change is not plotted in the above chart for groups with fewer than 30 unplaced applicants in any one cycle.

A.13 Main scheme applicants not currently placed from Northern Ireland: 8 days after A level results day

Applicants in unplaced states: applicants at 8 days after A level results day

Applicant type	Status	2010	2011	2012	2013	2014	2015	2016	2017	2018	2019
Main scheme	Holding offer	1,300	1,360	1,780	1,770	1,610	1,800	1,660	1,670	1,850	1,330
	Free to be placed in Clearing	4,750	5,120	4,670	4,520	4,710	5,330	4,870	4,580	3,940	3,880

A.14 Main scheme applicants not currently placed from Northern Ireland: 8 days after A level results day

Applicants in unplaced states: difference between cycle and 2018 cycle

Applicant type	Status	2010	2011	2012	2013	2014	2015	2016	2017	2018	2019
Main scheme	Holding offer	-30%	-27%	-4%	-4%	-13%	-3%	-10%	-10%	0%	-28%
	Free to be placed in Clearing	20%	30%	19%	15%	19%	35%	24%	16%	0%	-1%

Note: The percentage change is not recorded in the above table for groups with fewer than 10 unplaced applicants in that cycle or in the 2018 cycle.

A.15 Direct to Clearing applicants from Northern Ireland: 8 days after A level results day

Direct to Clearing: difference between cycle and 2018 cycle

- Placed (Direct to Clearing)
- Other (Direct to Clearing)



Note: The percentage change is not plotted in the above chart for groups with fewer than 30 placed applicants in any one cycle.

A.16 Direct to Clearing applicants from Northern Ireland: 8 days after A level results day

Direct to Clearing 8 days after A level results day

Applicant type	Status	2010	2011	2012	2013	2014	2015	2016	2017	2018	2019
Direct to Clearing	Placed (Direct to Clearing)	40	40	50	60	60	50	60	80	70	80
	Other (Direct to Clearing)	140	80	80	80	90	60	60	70	70	90

A.17 Direct to Clearing applicants from Northern Ireland: 8 days after A level results day

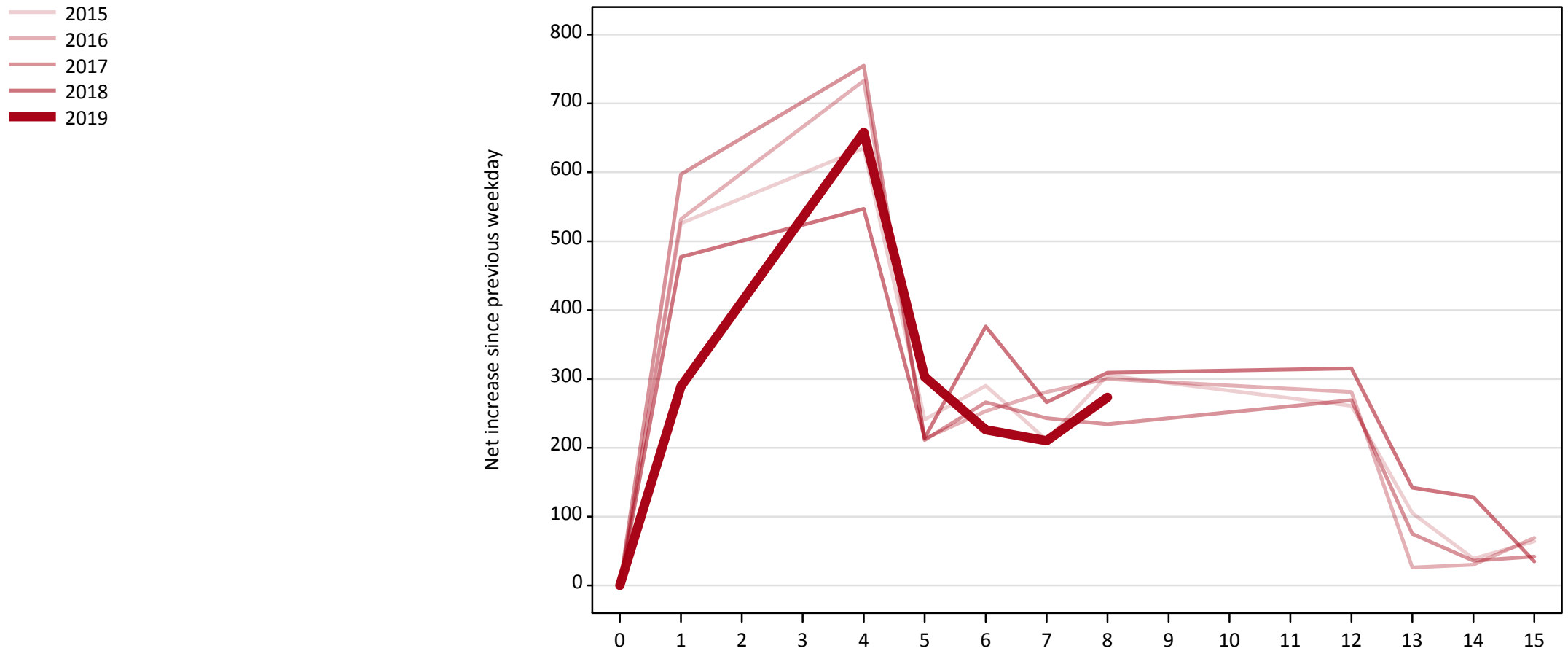
Direct to Clearing: difference between cycle and 2018 cycle

Applicant type	Status	2010	2011	2012	2013	2014	2015	2016	2017	2018	2019
Direct to Clearing	Placed (Direct to Clearing)	-42%	-48%	-37%	-20%	-17%	-28%	-20%	11%	0%	18%
	Other (Direct to Clearing)	96%	14%	11%	14%	22%	-16%	-23%	-5%	0%	19%

Note: The percentage change is not recorded in the above table for groups with fewer than 10 placed applicants in that cycle or in the 2018 cycle.

A.18 All Placed: Daily net change (from Northern Ireland)

Net increase since previous weekday (2019 cycle up to 8 days after A level results day)

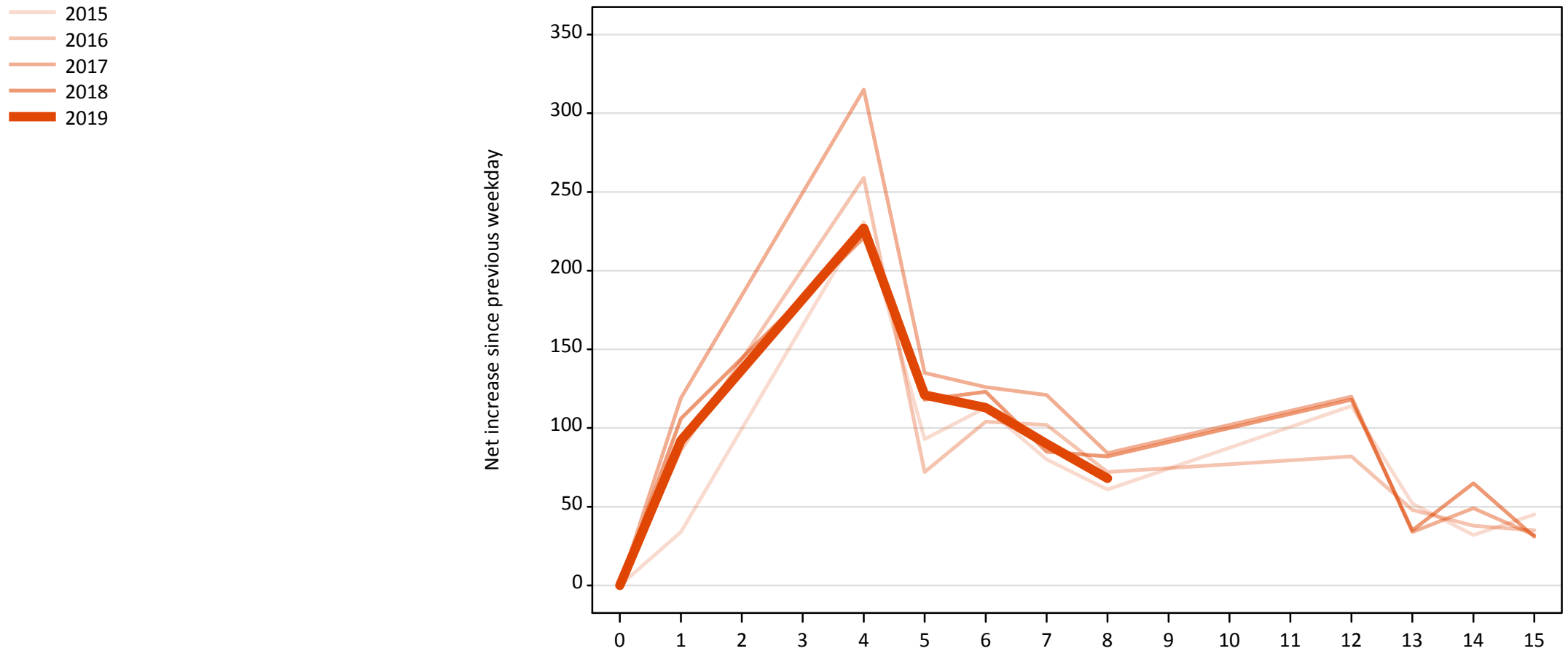


A.19 All Placed: Daily net change (from Northern Ireland)

Net increase since previous weekday (2019 cycle up to 8 days after A level results day)

Applicant status, days since A level results day		2015	2016	2017	2018	2019
All Placed	0	0	0	0	0	0
	1	530	530	600	480	290
	4	640	730	760	550	660
	5	240	210	210	210	300
	6	290	250	270	380	230
	7	210	280	240	270	210
	8	310	300	230	310	270
	12	260	280	270	320	
	13	110	30	80	140	
	14	40	30	40	130	
	15	60	70	40	40	

A.20 Placed through Clearing only: Daily net change (from Northern Ireland)
Net increase since previous weekday (2019 cycle up to 8 days after A level results day)



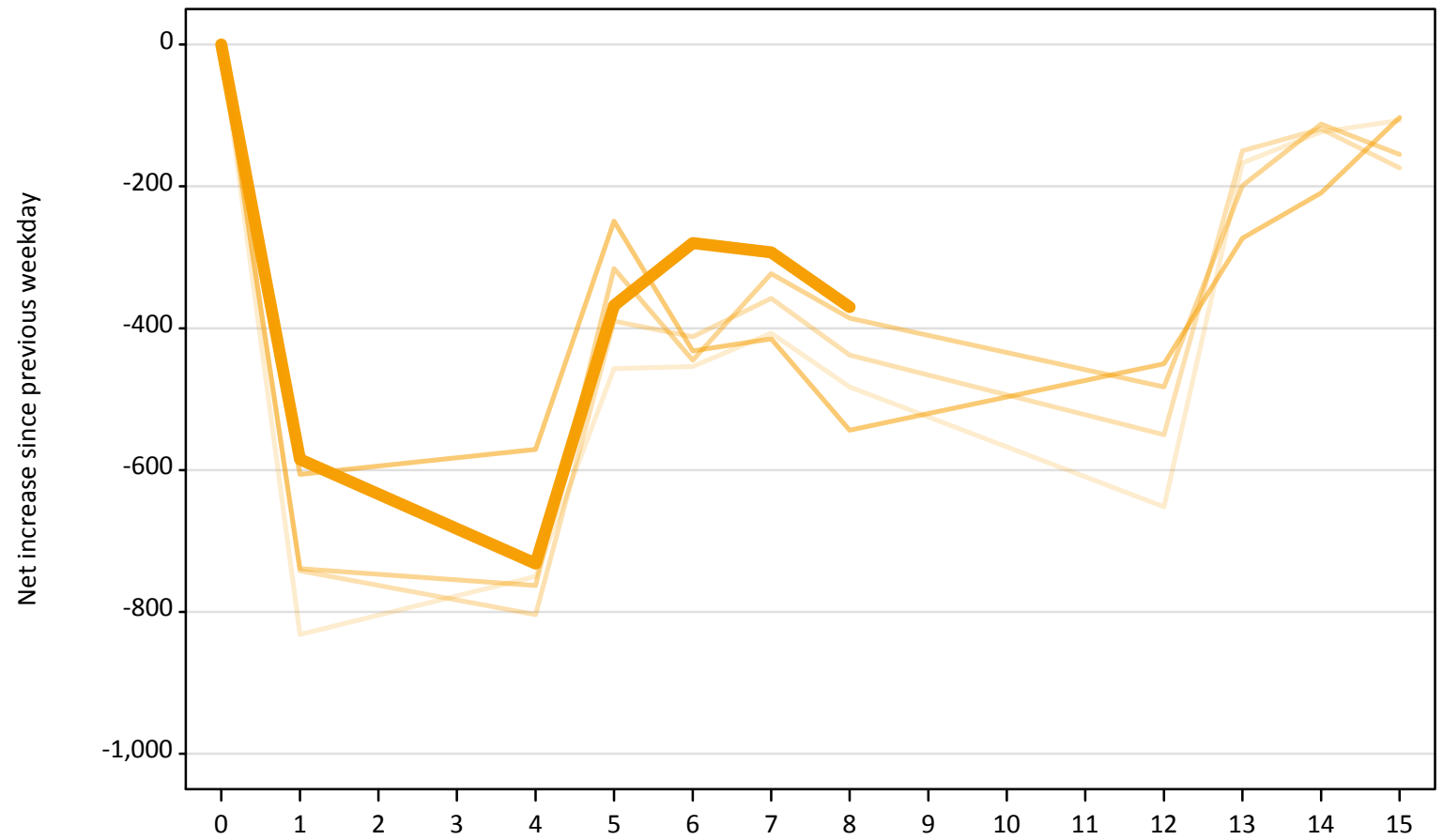
A.21 Placed through Clearing only: Daily net change (from Northern Ireland)

Net increase since previous weekday (2019 cycle up to 8 days after A level results day)

Applicant status, days since A level results day		2015	2016	2017	2018	2019
Placed through Clearing only	0	0	0	0	0	0
	1	30	90	120	110	90
	4	230	260	320	220	230
	5	90	70	140	120	120
	6	110	100	130	120	110
	7	80	100	120	90	90
	8	60	70	80	80	70
	12	110	80	120	120	
	13	50	50	30	40	
	14	30	40	50	70	
	15	50	40	30	30	

A.22 Holding Offer: Daily net change (from Northern Ireland)
Net increase since previous weekday (2019 cycle up to 8 days after A level results day)

- 2015
- 2016
- 2017
- 2018
- 2019**



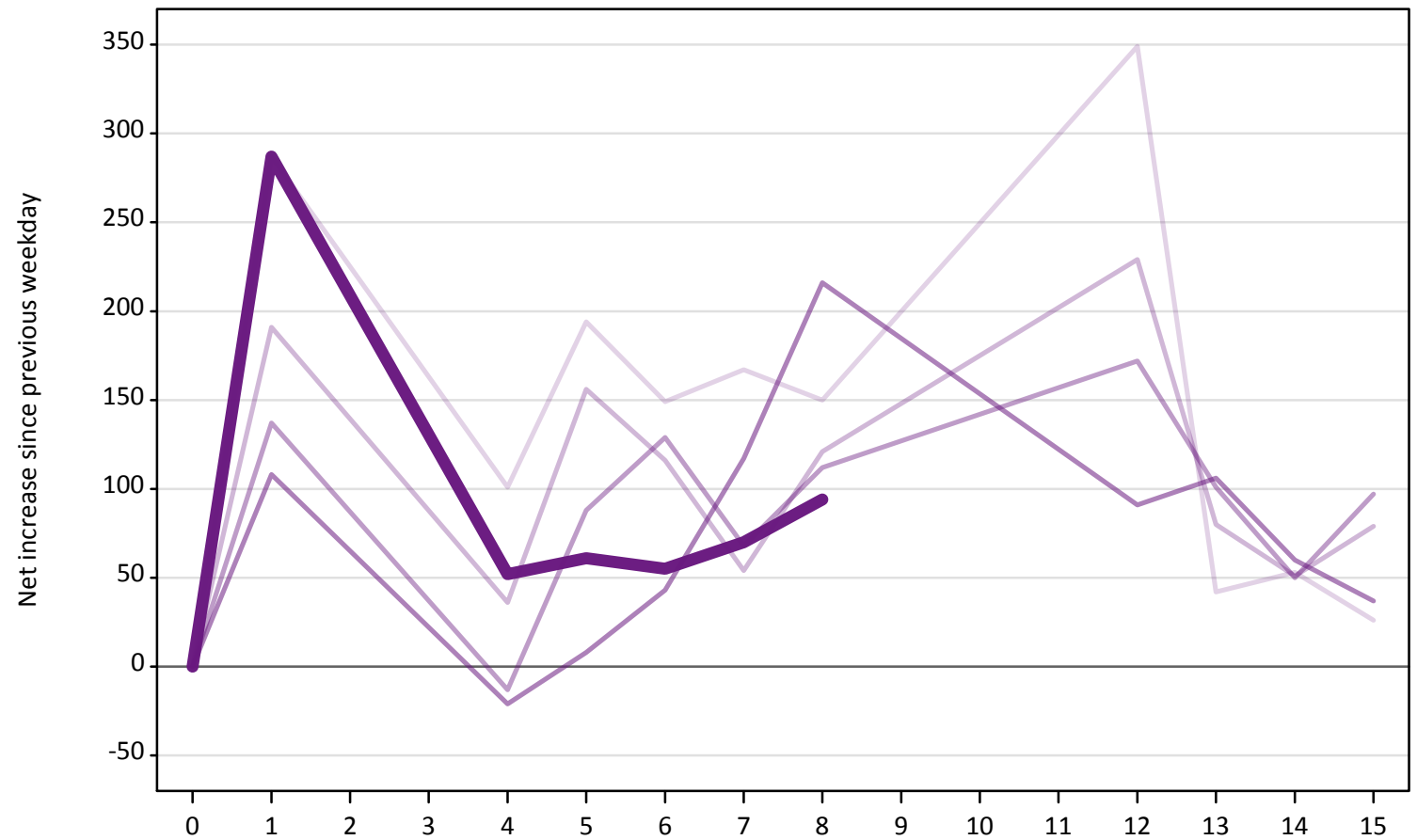
A.23 Holding Offer: Daily net change (from Northern Ireland)

Net increase since previous weekday (2019 cycle up to 8 days after A level results day)

Applicant status, days since A level results day	2015	2016	2017	2018	2019	
Holding Offer	0	0	0	0	0	
	1	-830	-740	-740	-610	-590
	4	-750	-800	-760	-570	-730
	5	-460	-390	-320	-250	-370
	6	-450	-410	-450	-430	-280
	7	-410	-360	-320	-420	-290
	8	-480	-440	-390	-540	-370
	12	-650	-550	-480	-450	
	13	-170	-150	-200	-270	
	14	-120	-120	-110	-210	
	15	-110	-170	-160	-100	

A.24 Free to be placed in Clearing: Daily net change (from Northern Ireland)
Net increase since previous weekday (2019 cycle up to 8 days after A level results day)

- 2015
- 2016
- 2017
- 2018
- 2019



A.25 Free to be placed in Clearing: Daily net change (from Northern Ireland)
 Net increase since previous weekday (2019 cycle up to 8 days after A level results day)

Applicant status, days since A level results day		2015	2016	2017	2018	2019
Free to be placed in Clearing	0	0	0	0	0	0
	1	290	190	140	110	290
	4	100	40	-10	-20	50
	5	190	160	90	10	60
	6	150	120	130	40	60
	7	170	50	70	120	70
	8	150	120	110	220	90
	12	350	230	170	90	
	13	40	80	100	110	
	14	50	50	50	60	
	15	30	80	100	40	