

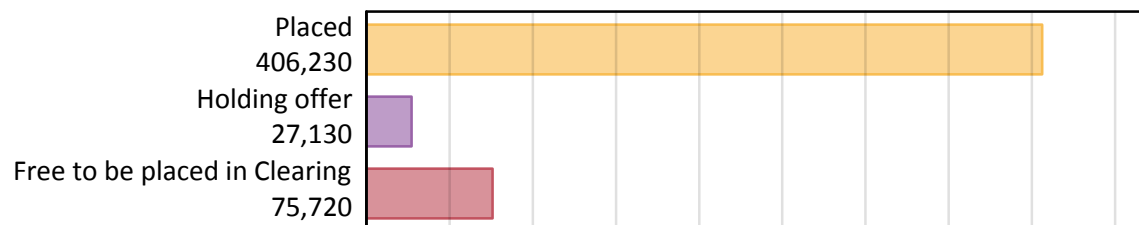
# Daily Clearing Analysis: Overview

Analysis at 00:05 on Friday 23 August 2019 (8 days after A level results day)

## A.1 Applicants by type and status from the UK, 2019 cycle

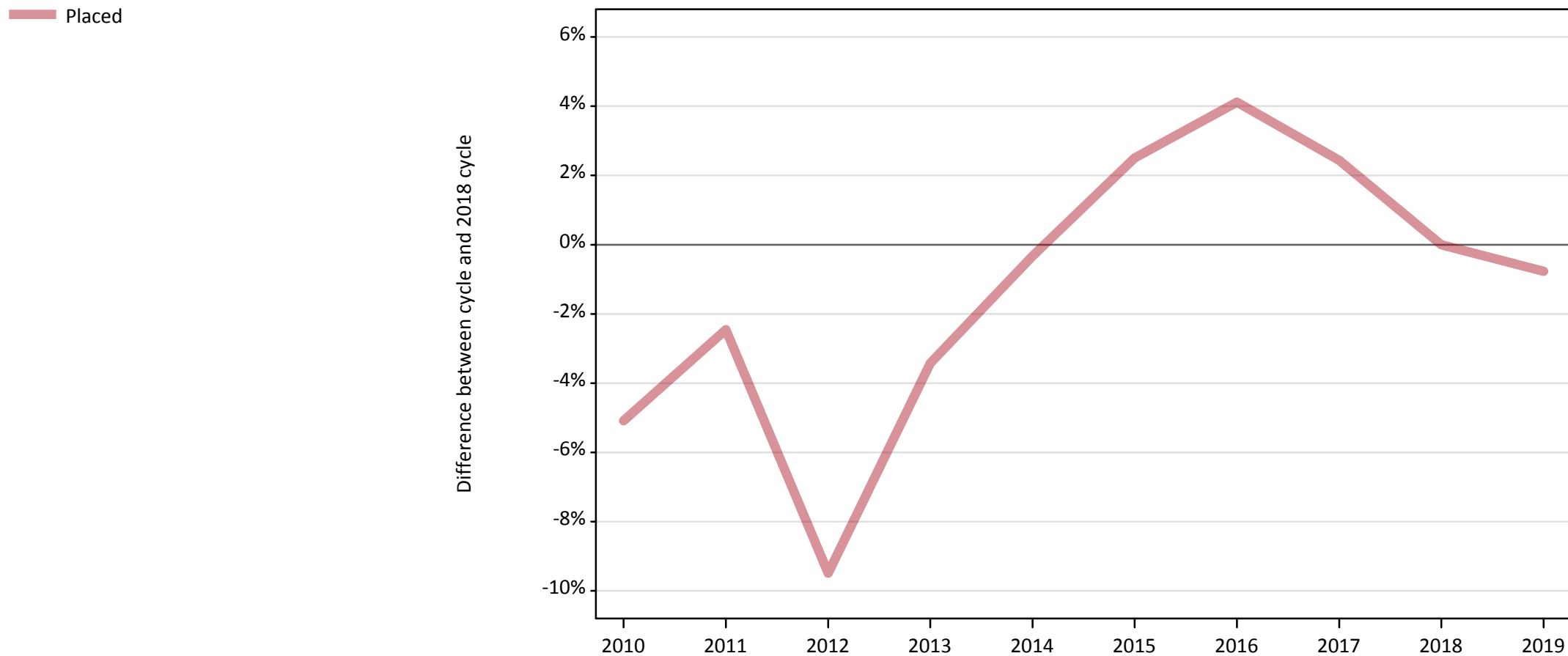
Applicant type	Status	2019
Main scheme	Placed (Clearing)	38,330
	Placed (Adjustment)	530
	Placed (Firm)	320,590
	Placed (Insurance)	27,800
	Placed (Other)	10,200
	Holding offer	27,130
	Free to be placed in Clearing	75,720
Direct to Clearing	Placed (Direct to Clearing)	8,770
	Other (Direct to Clearing)	7,410
All applicants	Placed	406,230

## A.2 Summary of applicants who are placed, holding offers or free to be placed in Clearing ( the UK )



### A.3 All placed applicants from the UK: 8 days after A level results day

All placed applicants: difference between cycle and 2018 cycle



Note: The percentage change is not plotted in the above chart for groups with fewer than 30 placed applicants in any one cycle.

#### A.4 All placed applicants from the UK: 8 days after A level results day

All placed applicants: applicants at 8 days after A level results day

Applicant type	Status	2010	2011	2012	2013	2014	2015	2016	2017	2018	2019
All applicants	Placed	388,560	399,320	370,520	395,340	408,040	419,620	426,220	419,350	409,370	406,230

#### A.5 All placed applicants from the UK: 8 days after A level results day

All placed applicants: difference between cycle and 2018 cycle

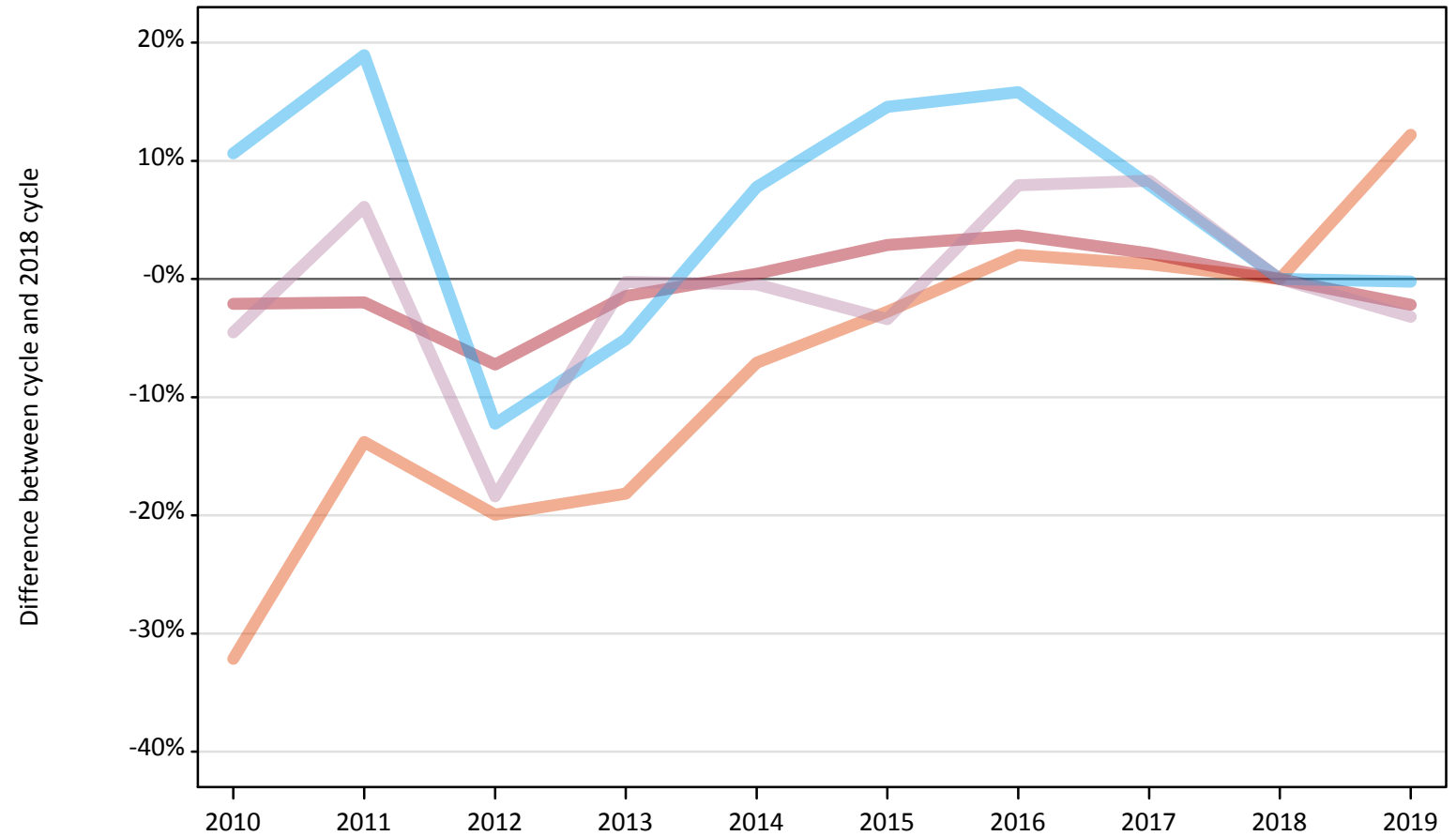
Applicant type	Status	2010	2011	2012	2013	2014	2015	2016	2017	2018	2019
All applicants	Placed	-5%	-2%	-9%	-3%	-0%	3%	4%	2%	0%	-1%

Note: The percentage change is not recorded in the above table for groups with fewer than 10 placed applicants in that cycle or in the 2018 cycle.

## A.6 Placed main scheme applicants from the UK: 8 days after A level results day

All Main scheme placed routes (excluding Adjustment): difference between cycle and 2018 cycle

- Placed (Clearing)
- Placed (Firm)
- Placed (Insurance)
- Placed (Other)



Note: The percentage change is not plotted in the above chart for groups with fewer than 30 placed applicants in any one cycle.

### A.7 Placed main scheme applicants from the UK: 8 days after A level results day

All Main scheme placed routes (excluding Adjustment): applicants at 8 days after A level results day

Applicant type	Status	2010	2011	2012	2013	2014	2015	2016	2017	2018	2019
Main scheme	Placed (Clearing)	23,180	29,450	27,350	27,960	31,740	33,220	34,860	34,590	34,160	38,330
	Placed (Firm)	320,820	321,230	303,990	322,960	329,170	337,150	339,780	334,830	327,720	320,590
	Placed (Insurance)	30,820	33,140	24,450	26,440	30,030	31,920	32,260	30,070	27,860	27,800
	Placed (Other)	10,060	11,180	8,600	10,510	10,490	10,180	11,370	11,410	10,540	10,200

### A.8 Placed main scheme applicants from the UK: 8 days after A level results day

All Main scheme placed routes (excluding Adjustment): difference between cycle and 2018 cycle

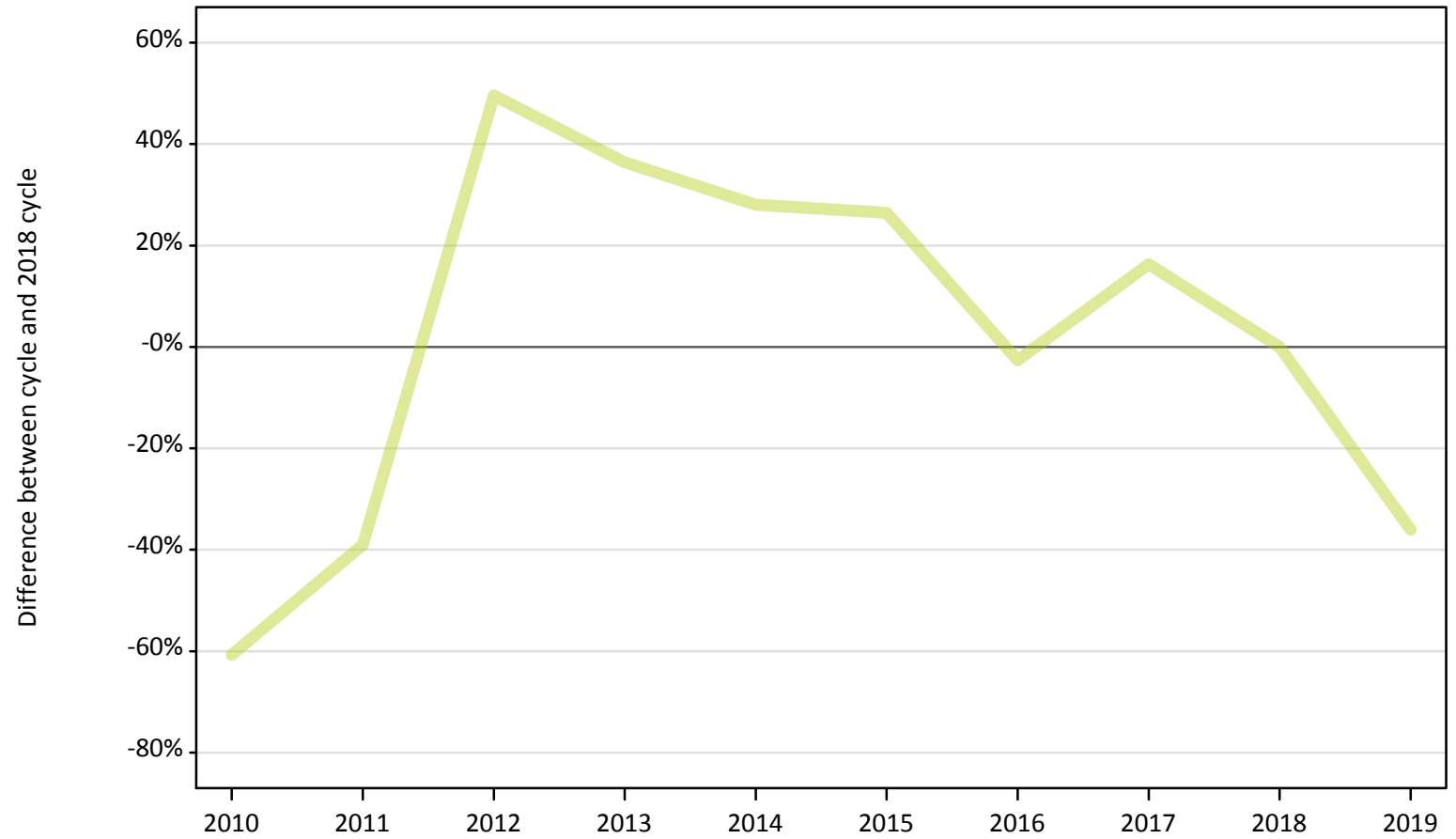
Applicant type	Status	2010	2011	2012	2013	2014	2015	2016	2017	2018	2019
Main scheme	Placed (Clearing)	-32%	-14%	-20%	-18%	-7%	-3%	2%	1%	0%	12%
	Placed (Firm)	-2%	-2%	-7%	-1%	0%	3%	4%	2%	0%	-2%
	Placed (Insurance)	11%	19%	-12%	-5%	8%	15%	16%	8%	0%	-0%
	Placed (Other)	-5%	6%	-18%	-0%	-0%	-3%	8%	8%	0%	-3%

Note: The percentage change is not recorded in the above table for groups with fewer than 10 placed applicants in that cycle or in the 2018 cycle.

### A.9 Main scheme applicants placed through adjustment: 8 days after A level results day

Placed through adjustment: difference between cycle and 2018 cycle

Placed (Adjustment)



Note: The percentage change is not plotted in the above chart for groups with fewer than 30 placed applicants in any one cycle.

### A.10 Main scheme applicants placed through adjustment: 8 days after A level results day

Placed through adjustment: applicants at 8 days after A level results day

Applicant type	Status	2010	2011	2012	2013	2014	2015	2016	2017	2018	2019
Main scheme	Placed (Adjustment)	330	510	1,250	1,140	1,070	1,060	810	970	840	530

### A.11 Main scheme applicants placed through adjustment: 8 days after A level results day

Placed through adjustment: difference between cycle and 2018 cycle

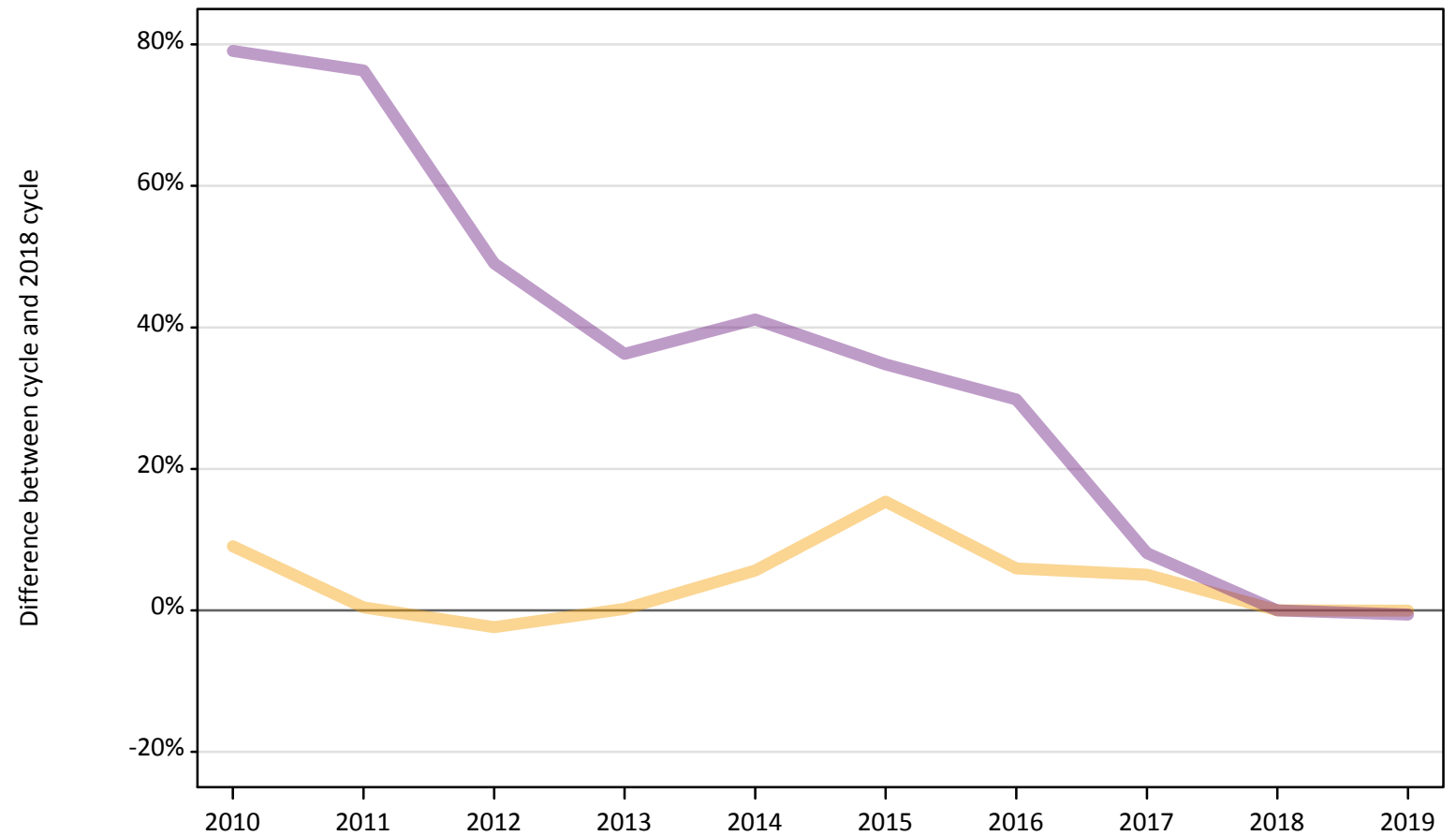
Applicant type	Status	2010	2011	2012	2013	2014	2015	2016	2017	2018	2019
Main scheme	Placed (Adjustment)	-61%	-39%	50%	36%	28%	26%	-3%	16%	0%	-36%

Note: The percentage change is not recorded in the above table for groups with fewer than 10 placed applicants in that cycle or in the 2018 cycle.

## A.12 Main scheme applicants not currently placed from the UK: 8 days after A level results day

Applicants in unplaced states: difference between cycle and 2018 cycle

— Holding offer  
— Free to be placed in Clearing



Note: The percentage change is not plotted in the above chart for groups with fewer than 30 unplaced applicants in any one cycle.



### A.13 Main scheme applicants not currently placed from the UK: 8 days after A level results day

Applicants in unplaced states: applicants at 8 days after A level results day

Applicant type	Status	2010	2011	2012	2013	2014	2015	2016	2017	2018	2019
Main scheme	Holding offer	29,610	27,260	26,500	27,200	28,670	31,310	28,750	28,510	27,140	27,130
	Free to be placed in Clearing	136,450	134,350	113,560	103,830	107,520	102,700	98,910	82,340	76,200	75,720

### A.14 Main scheme applicants not currently placed from the UK: 8 days after A level results day

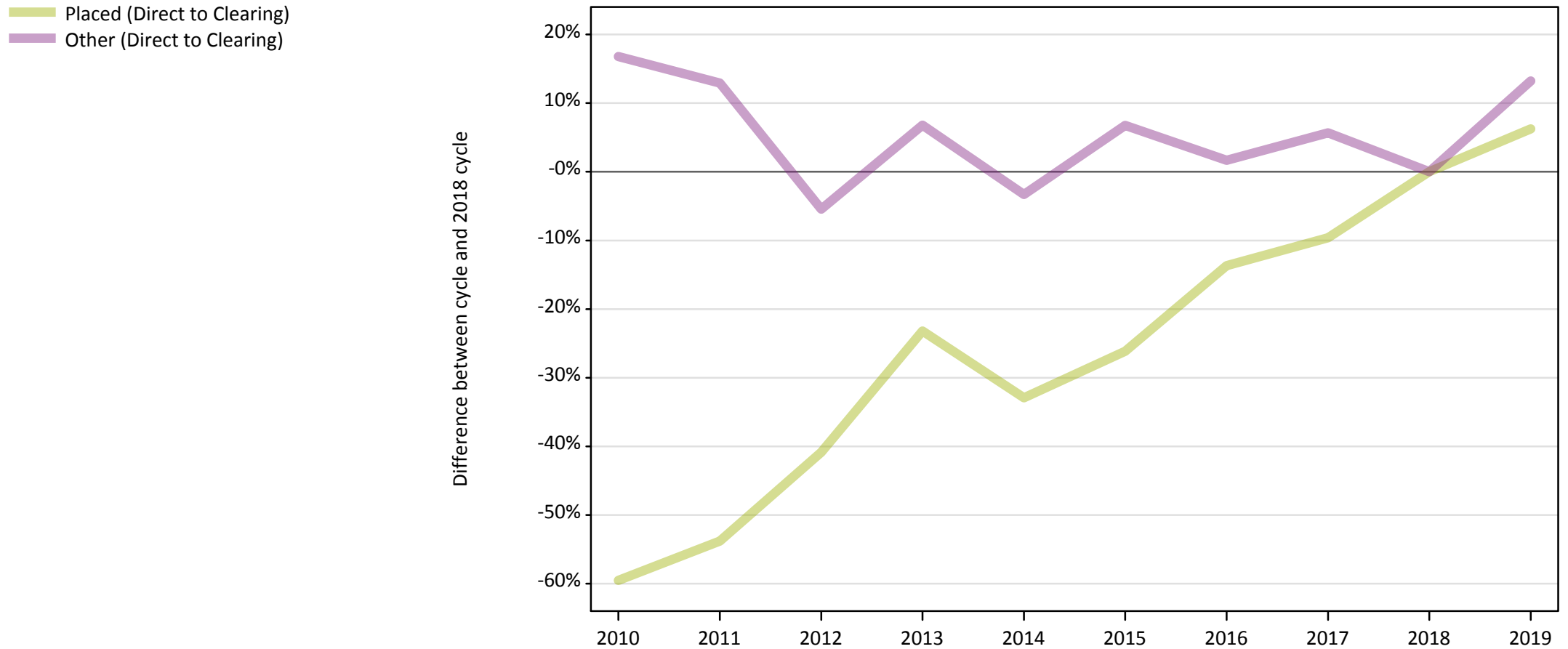
Applicants in unplaced states: difference between cycle and 2018 cycle

Applicant type	Status	2010	2011	2012	2013	2014	2015	2016	2017	2018	2019
Main scheme	Holding offer	9%	0%	-2%	0%	6%	15%	6%	5%	0%	-0%
	Free to be placed in Clearing	79%	76%	49%	36%	41%	35%	30%	8%	0%	-1%

Note: The percentage change is not recorded in the above table for groups with fewer than 10 unplaced applicants in that cycle or in the 2018 cycle.

### A.15 Direct to Clearing applicants from the UK: 8 days after A level results day

Direct to Clearing: difference between cycle and 2018 cycle



Note: The percentage change is not plotted in the above chart for groups with fewer than 30 placed applicants in any one cycle.

### A.16 Direct to Clearing applicants from the UK: 8 days after A level results day

Direct to Clearing 8 days after A level results day

Applicant type	Status	2010	2011	2012	2013	2014	2015	2016	2017	2018	2019
Direct to Clearing	Placed (Direct to Clearing)	3,340	3,810	4,880	6,340	5,540	6,100	7,130	7,460	8,260	8,770
	Other (Direct to Clearing)	7,640	7,380	6,180	6,980	6,320	6,980	6,650	6,910	6,540	7,410

### A.17 Direct to Clearing applicants from the UK: 8 days after A level results day

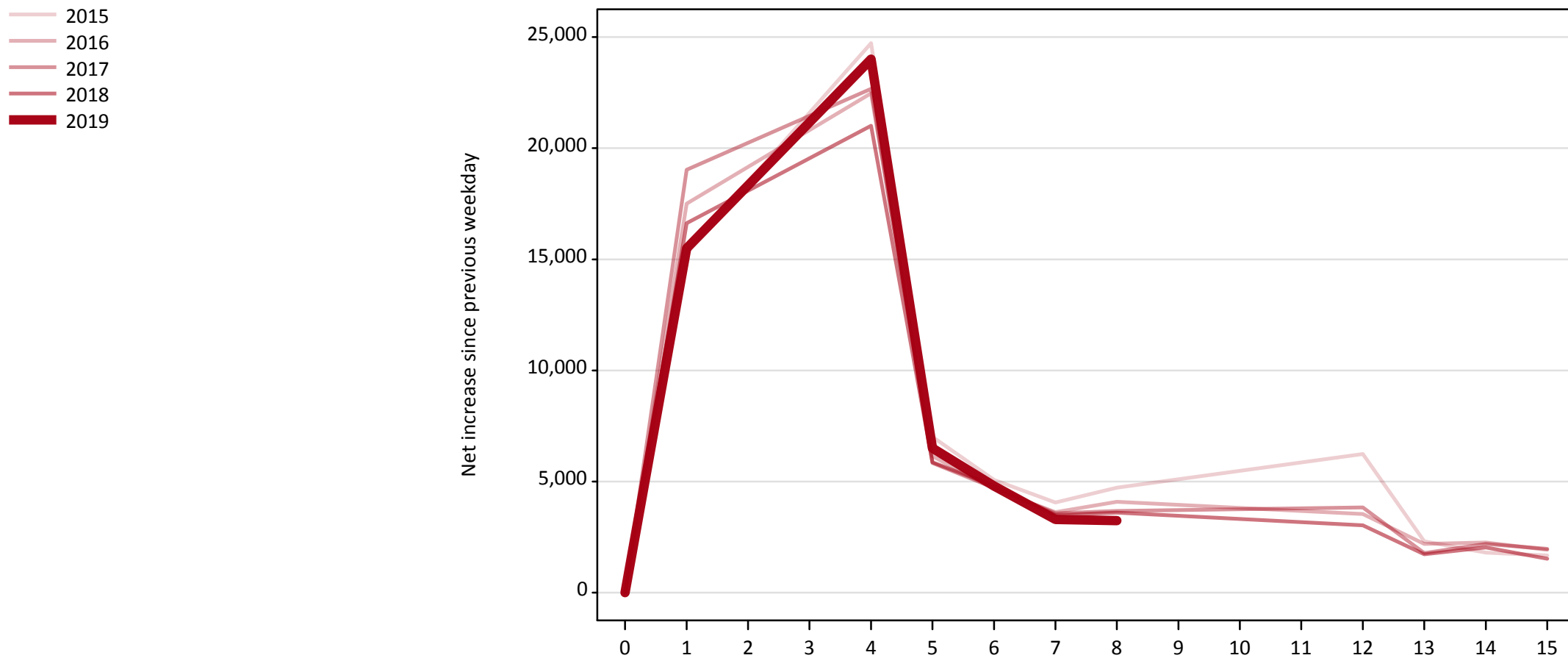
Direct to Clearing: difference between cycle and 2018 cycle

Applicant type	Status	2010	2011	2012	2013	2014	2015	2016	2017	2018	2019
Direct to Clearing	Placed (Direct to Clearing)	-60%	-54%	-41%	-23%	-33%	-26%	-14%	-10%	0%	6%
	Other (Direct to Clearing)	17%	13%	-5%	7%	-3%	7%	2%	6%	0%	13%

Note: The percentage change is not recorded in the above table for groups with fewer than 10 placed applicants in that cycle or in the 2018 cycle.

### A.18 All Placed: Daily net change (from the UK)

Net increase since previous weekday (2019 cycle up to 8 days after A level results day)

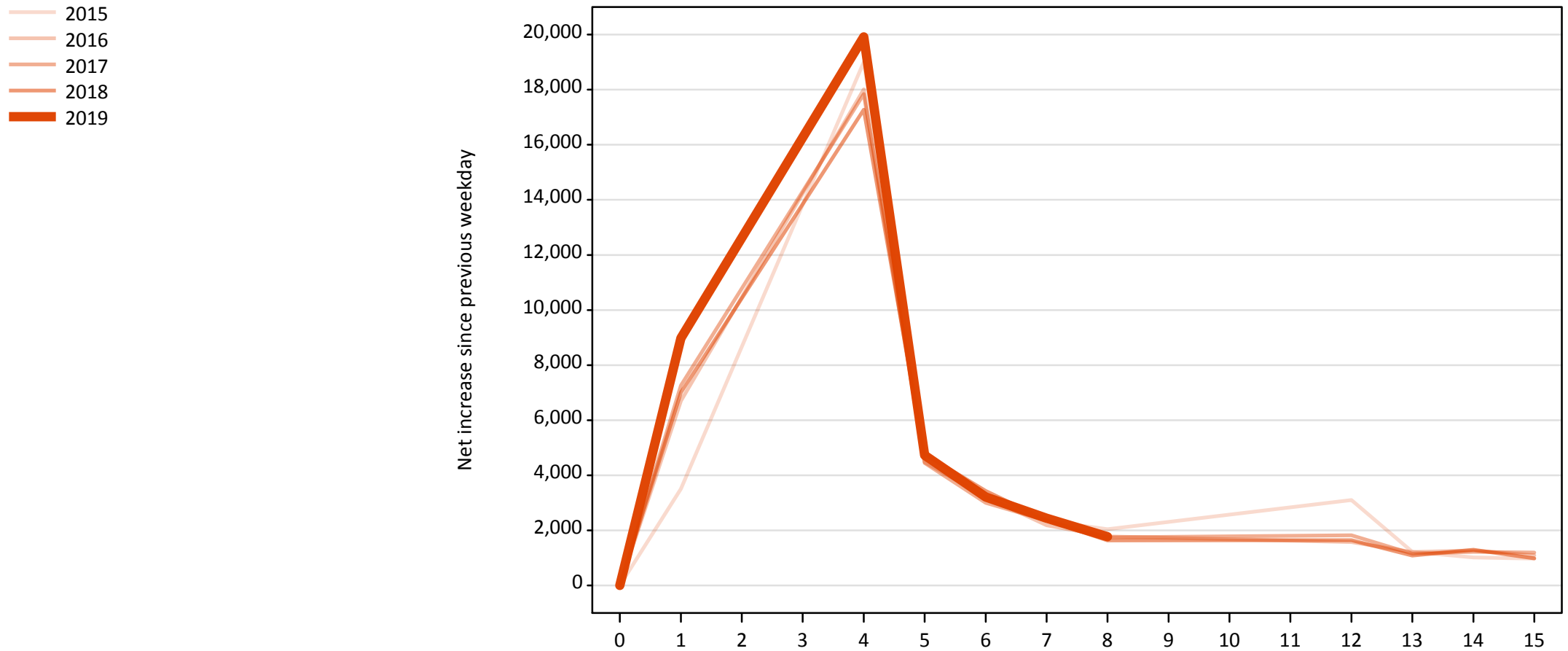


**A.19 All Placed: Daily net change (from the UK)**

Net increase since previous weekday (2019 cycle up to 8 days after A level results day)

Applicant status, days since A level results day	2015	2016	2017	2018	2019	
All Placed	0	0	0	0	0	
	1	15,350	17,510	19,030	16,620	15,490
	4	24,730	22,470	22,670	21,010	24,010
	5	7,020	6,140	5,840	5,870	6,510
	6	5,070	4,660	4,710	4,810	4,800
	7	4,060	3,630	3,570	3,500	3,300
	8	4,720	4,090	3,670	3,600	3,240
	12	6,240	3,530	3,840	3,020	
	13	2,310	2,200	1,780	1,720	
	14	1,810	2,260	2,200	2,030	
	15	1,680	1,920	1,970	1,530	

**A.20 Placed through Clearing only: Daily net change (from the UK)**  
Net increase since previous weekday (2019 cycle up to 8 days after A level results day)

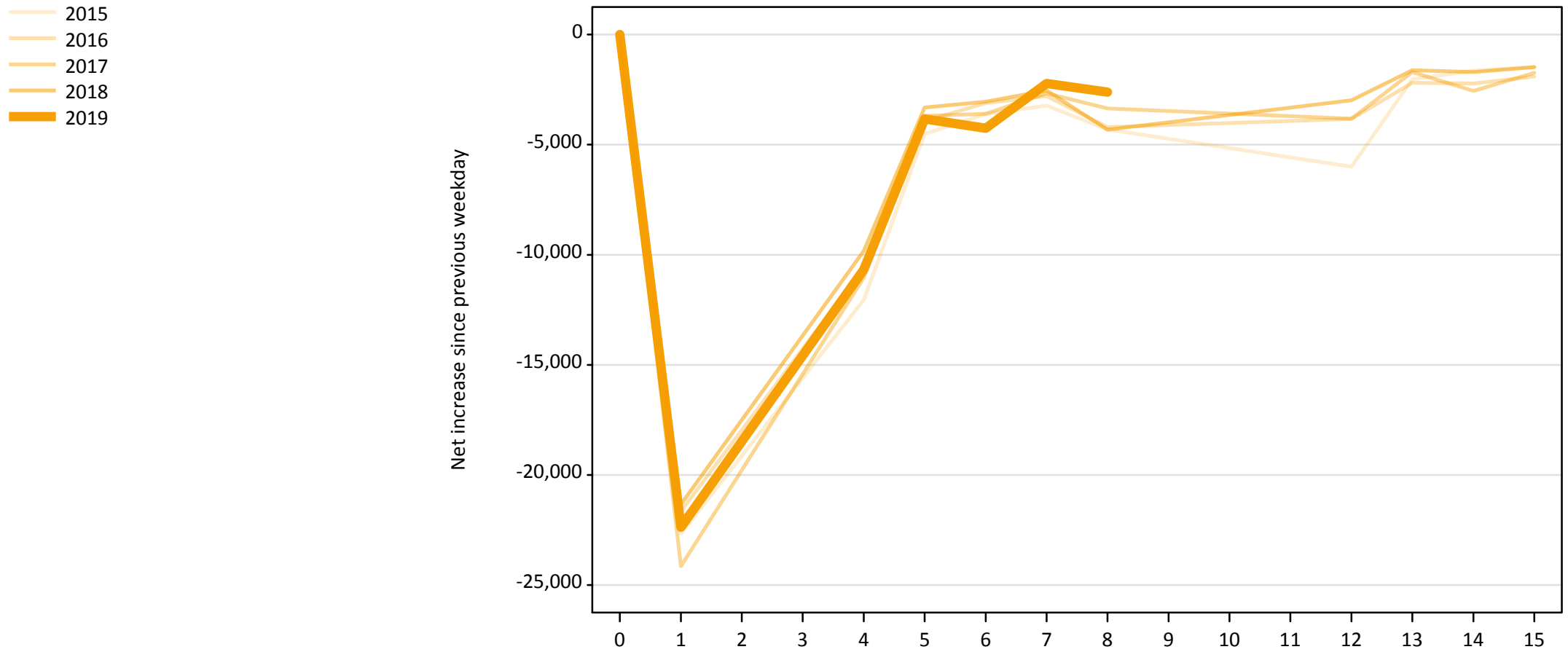


**A.21 Placed through Clearing only: Daily net change (from the UK)**

Net increase since previous weekday (2019 cycle up to 8 days after A level results day)

Applicant status, days since A level results day		2015	2016	2017	2018	2019
Placed through Clearing only	0	0	0	0	0	0
	1	3,510	6,700	7,260	7,010	8,980
	4	19,000	18,010	17,840	17,270	19,910
	5	4,820	4,470	4,450	4,770	4,730
	6	3,170	3,220	3,000	3,430	3,210
	7	2,350	2,180	2,360	2,370	2,440
	8	2,040	1,780	1,740	1,640	1,770
	12	3,100	1,570	1,820	1,640	
	13	1,220	1,210	1,150	1,080	
	14	1,020	1,270	1,220	1,300	
	15	980	1,090	1,200	980	

**A.22 Holding Offer: Daily net change (from the UK)**  
Net increase since previous weekday (2019 cycle up to 8 days after A level results day)



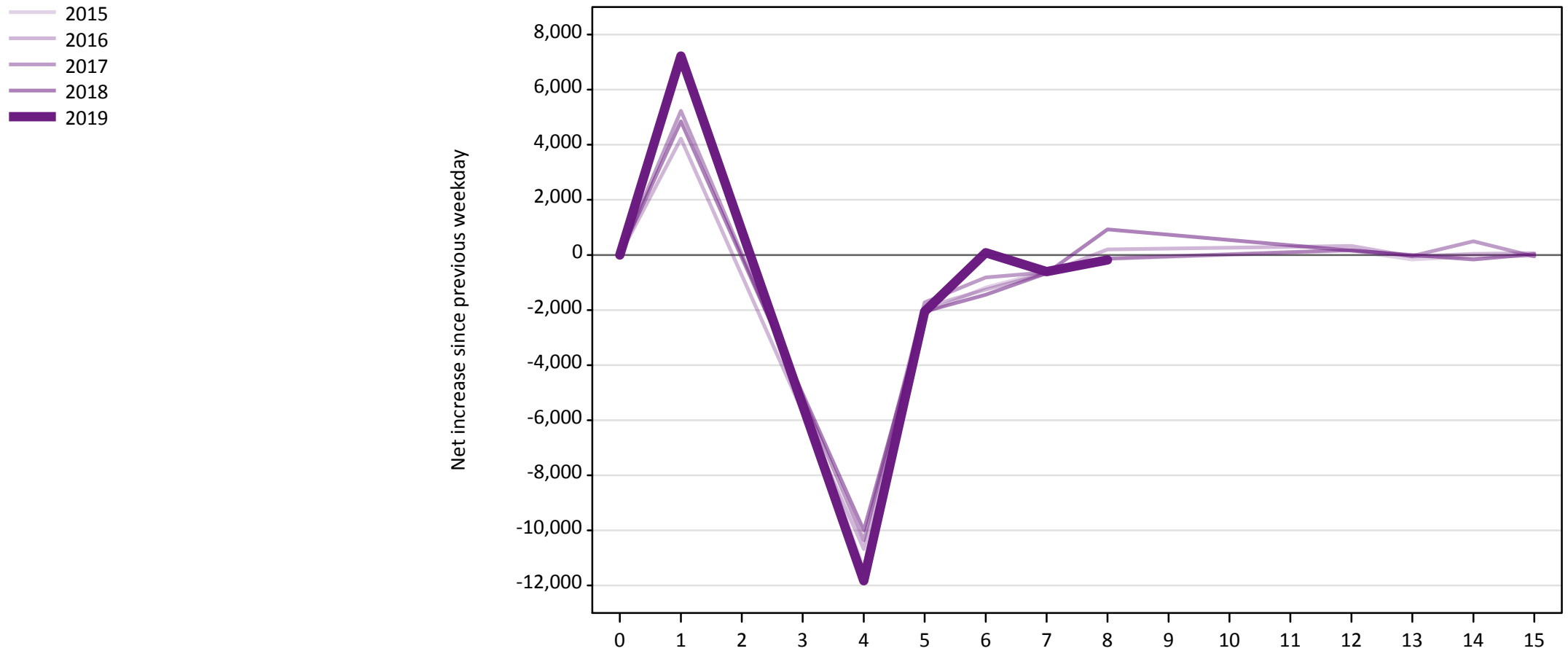


### A.23 Holding Offer: Daily net change (from the UK)

Net increase since previous weekday (2019 cycle up to 8 days after A level results day)

Applicant status, days since A level results day		2015	2016	2017	2018	2019
Holding Offer	0	0	0	0	0	0
	1	-22,670	-21,650	-24,140	-21,330	-22,370
	4	-12,050	-10,570	-11,040	-9,830	-10,670
	5	-4,510	-3,920	-3,690	-3,320	-3,840
	6	-3,610	-3,110	-3,600	-3,040	-4,250
	7	-3,230	-2,790	-2,670	-2,540	-2,220
	8	-4,310	-4,200	-3,360	-4,320	-2,620
	12	-6,000	-3,830	-3,830	-2,980	
	13	-2,030	-2,190	-1,700	-1,620	
	14	-1,640	-2,220	-2,560	-1,700	
	15	-1,470	-1,900	-1,740	-1,480	

**A.24 Free to be placed in Clearing: Daily net change (from the UK)**  
Net increase since previous weekday (2019 cycle up to 8 days after A level results day)



**A.25 Free to be placed in Clearing: Daily net change (from the UK)**

Net increase since previous weekday (2019 cycle up to 8 days after A level results day)

Applicant status, days since A level results day		2015	2016	2017	2018	2019
Free to be placed in Clearing	0	0	0	0	0	0
	1	7,260	4,220	5,230	4,850	7,220
	4	-11,400	-10,680	-10,370	-10,000	-11,830
	5	-2,100	-1,900	-1,730	-2,050	-2,060
	6	-1,180	-1,260	-820	-1,450	80
	7	-610	-660	-630	-660	-610
	8	-150	200	-130	920	-180
	12	150	320	190	160	
	13	-170	-50	-40	0	
	14	-50	40	500	-160	
	15	-40	60	-50	30	