

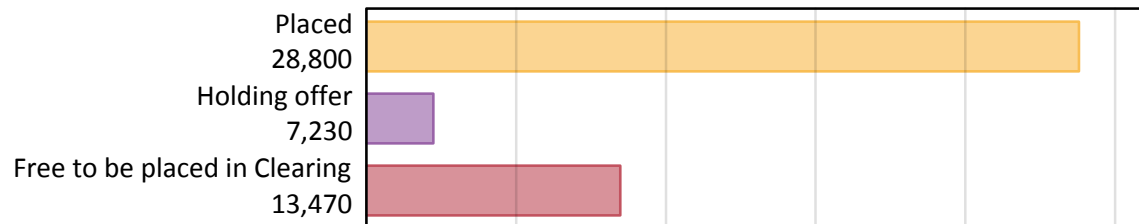
# Daily Clearing Analysis: Overview

Analysis at 00:05 on Friday 23 August 2019 (8 days after A level results day)

## A.1 Applicants by type and status from the EU - excluding UK, 2019 cycle

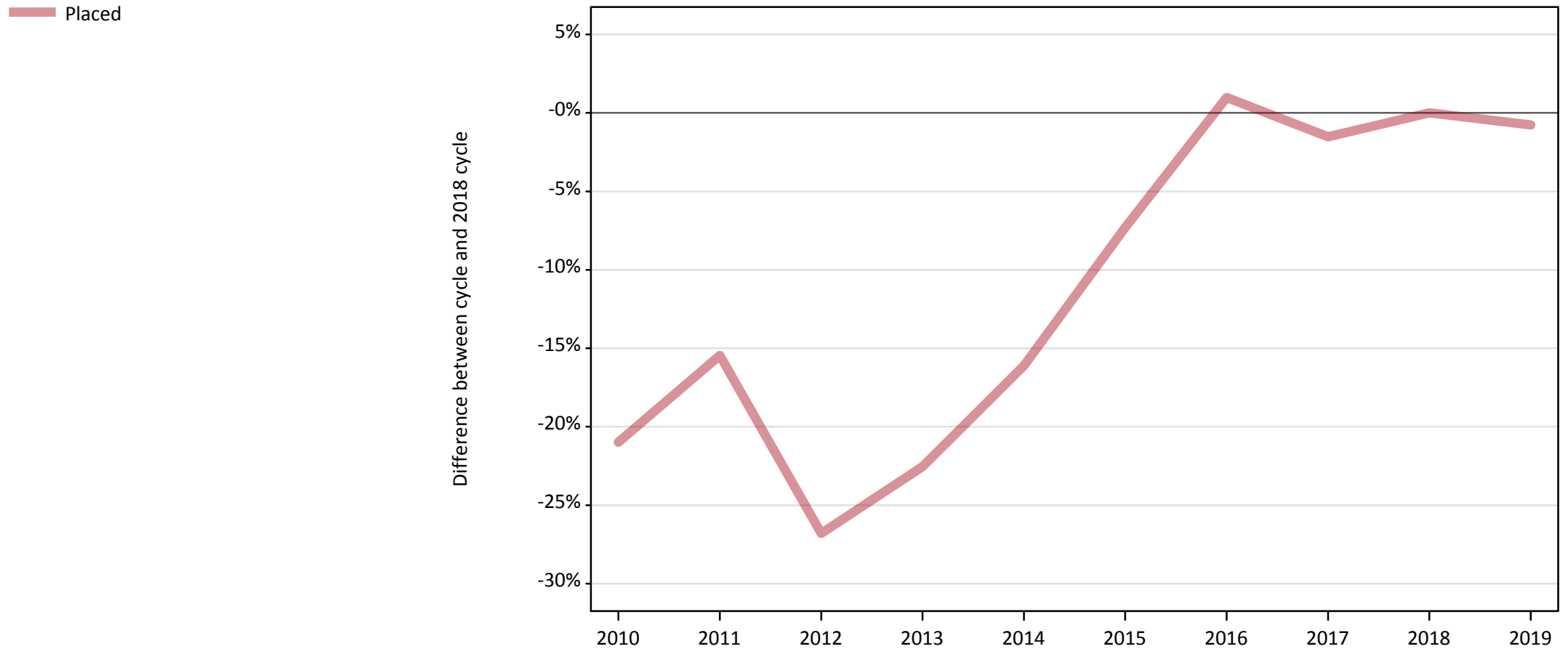
Applicant type	Status	2019
Main scheme	Placed (Clearing)	1,380
	Placed (Adjustment)	20
	Placed (Firm)	23,690
	Placed (Insurance)	2,100
	Placed (Other)	1,230
	Holding offer	7,230
	Free to be placed in Clearing	13,470
Direct to Clearing	Placed (Direct to Clearing)	380
	Other (Direct to Clearing)	380
All applicants	Placed	28,800

## A.2 Summary of applicants who are placed, holding offers or free to be placed in Clearing ( the EU - excluding UK )



### A.3 All placed applicants from the EU - excluding UK: 8 days after A level results day

All placed applicants: difference between cycle and 2018 cycle



Note: The percentage change is not plotted in the above chart for groups with fewer than 30 placed applicants in any one cycle.

#### A.4 All placed applicants from the EU - excluding UK: 8 days after A level results day

All placed applicants: applicants at 8 days after A level results day

Applicant type	Status	2010	2011	2012	2013	2014	2015	2016	2017	2018	2019
All applicants	Placed	22,930	24,530	21,240	22,480	24,340	26,900	29,310	28,580	29,020	28,800

#### A.5 All placed applicants from the EU - excluding UK: 8 days after A level results day

All placed applicants: difference between cycle and 2018 cycle

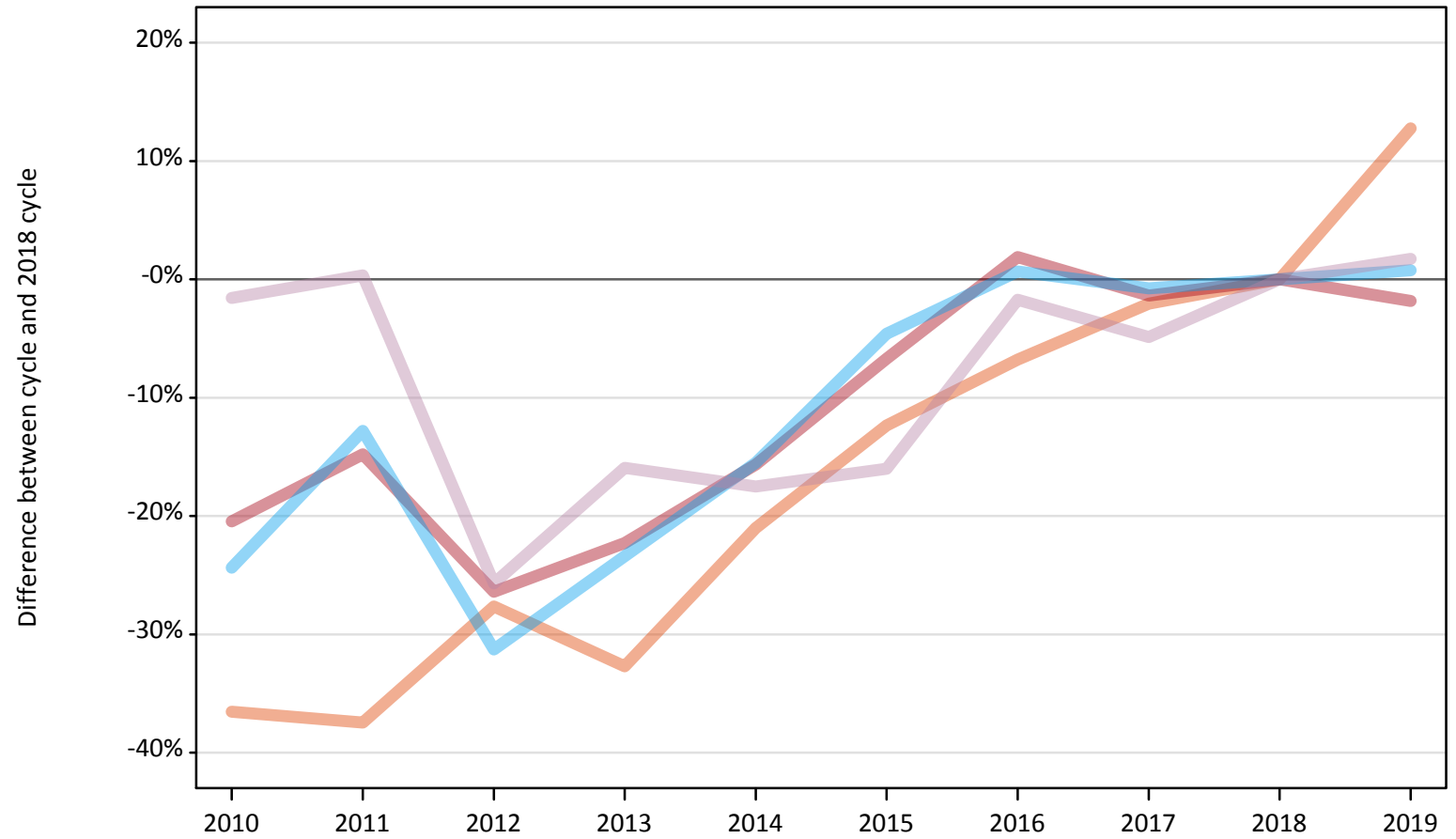
Applicant type	Status	2010	2011	2012	2013	2014	2015	2016	2017	2018	2019
All applicants	Placed	-21%	-15%	-27%	-23%	-16%	-7%	1%	-2%	0%	-1%

Note: The percentage change is not recorded in the above table for groups with fewer than 10 placed applicants in that cycle or in the 2018 cycle.

## A.6 Placed main scheme applicants from the EU - excluding UK: 8 days after A level results day

All Main scheme placed routes (excluding Adjustment): difference between cycle and 2018 cycle

- Placed (Clearing)
- Placed (Firm)
- Placed (Insurance)
- Placed (Other)



Note: The percentage change is not plotted in the above chart for groups with fewer than 30 placed applicants in any one cycle.

### A.7 Placed main scheme applicants from the EU - excluding UK: 8 days after A level results day

All Main scheme placed routes (excluding Adjustment): applicants at 8 days after A level results day

Applicant type	Status	2010	2011	2012	2013	2014	2015	2016	2017	2018	2019
Main scheme	Placed (Clearing)	780	770	890	820	970	1,070	1,140	1,200	1,220	1,380
	Placed (Firm)	19,190	20,560	17,760	18,750	20,350	22,510	24,580	23,800	24,130	23,690
	Placed (Insurance)	1,580	1,820	1,430	1,600	1,760	1,990	2,100	2,070	2,090	2,100
	Placed (Other)	1,190	1,220	900	1,020	1,000	1,020	1,190	1,150	1,210	1,230

### A.8 Placed main scheme applicants from the EU - excluding UK: 8 days after A level results day

All Main scheme placed routes (excluding Adjustment): difference between cycle and 2018 cycle

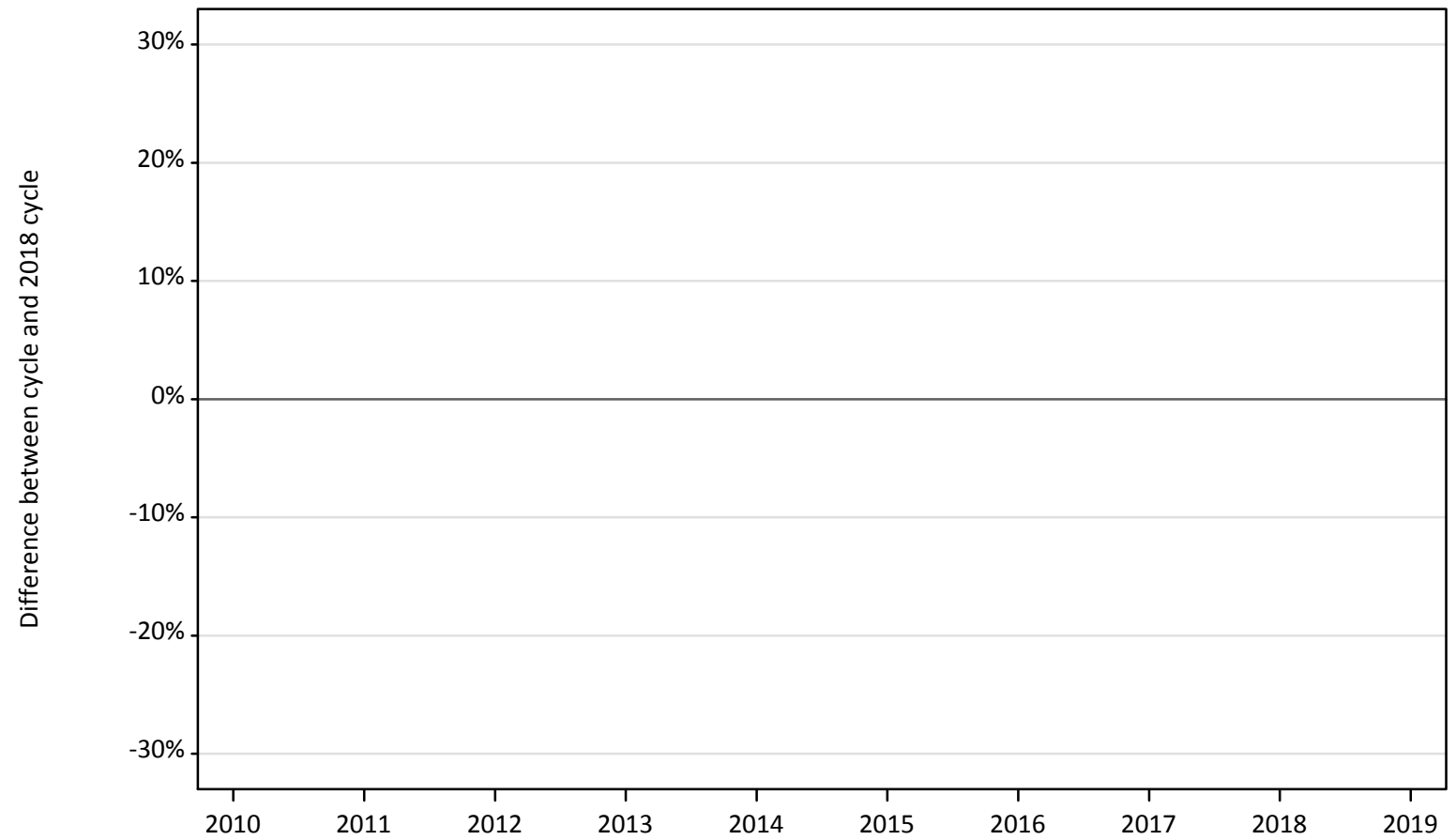
Applicant type	Status	2010	2011	2012	2013	2014	2015	2016	2017	2018	2019
Main scheme	Placed (Clearing)	-37%	-37%	-28%	-33%	-21%	-12%	-7%	-2%	0%	13%
	Placed (Firm)	-20%	-15%	-26%	-22%	-16%	-7%	2%	-1%	0%	-2%
	Placed (Insurance)	-24%	-13%	-31%	-23%	-15%	-5%	1%	-1%	0%	1%
	Placed (Other)	-2%	0%	-26%	-16%	-18%	-16%	-2%	-5%	0%	2%

Note: The percentage change is not recorded in the above table for groups with fewer than 10 placed applicants in that cycle or in the 2018 cycle.

## A.9 Main scheme applicants placed through adjustment: 8 days after A level results day

Placed through adjustment: difference between cycle and 2018 cycle

Placed (Adjustment)



Note: The percentage change is not plotted in the above chart for groups with fewer than 30 placed applicants in any one cycle.

### A.10 Main scheme applicants placed through adjustment: 8 days after A level results day

Placed through adjustment: applicants at 8 days after A level results day

Applicant type	Status	2010	2011	2012	2013	2014	2015	2016	2017	2018	2019
Main scheme	Placed (Adjustment)	10	10	40	40	40	40	40	40	30	20

### A.11 Main scheme applicants placed through adjustment: 8 days after A level results day

Placed through adjustment: difference between cycle and 2018 cycle

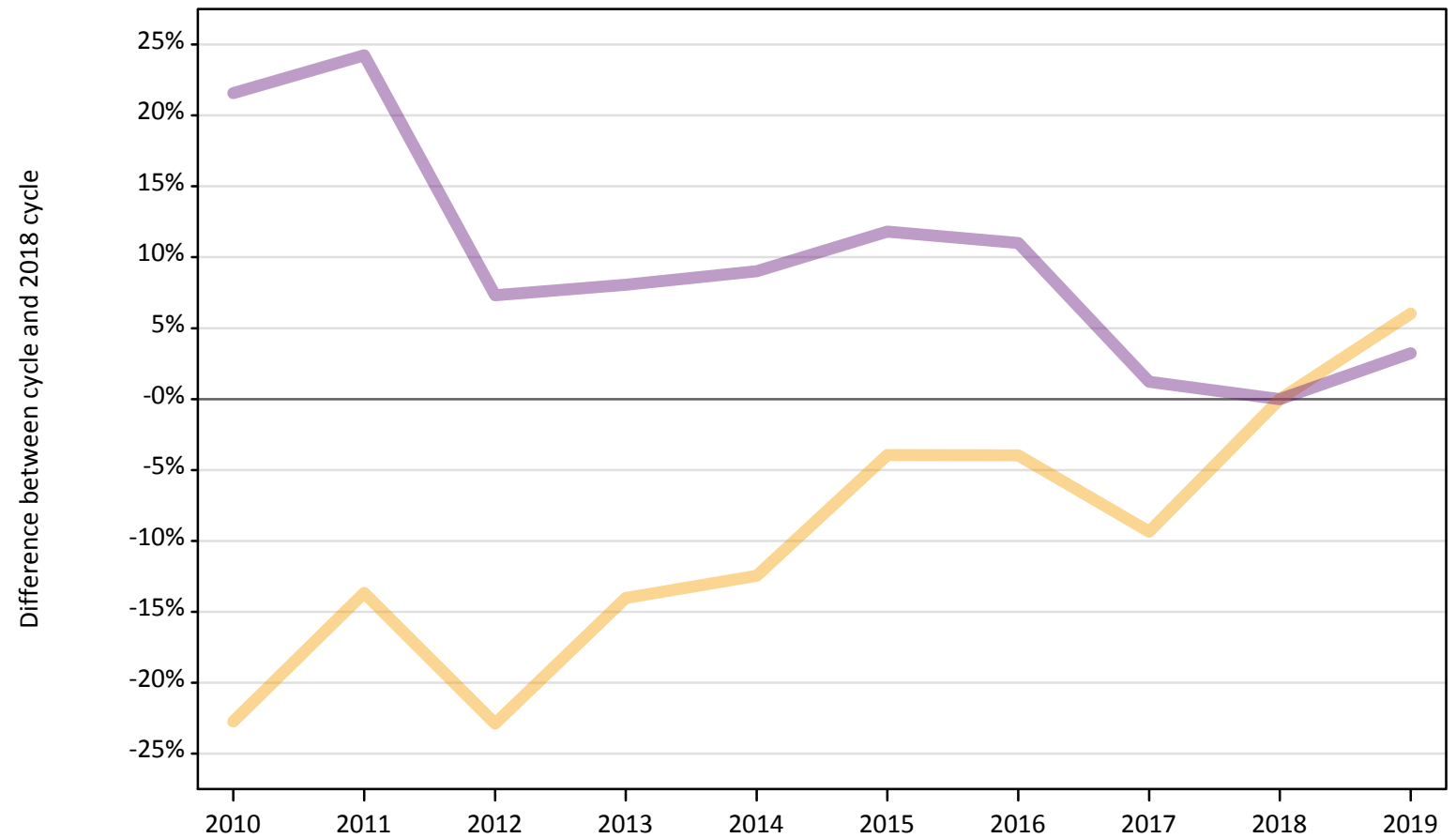
Applicant type	Status	2010	2011	2012	2013	2014	2015	2016	2017	2018	2019
Main scheme	Placed (Adjustment)	-52%	-56%	33%	37%	33%	44%	41%	56%	0%	-26%

Note: The percentage change is not recorded in the above table for groups with fewer than 10 placed applicants in that cycle or in the 2018 cycle.

### A.12 Main scheme applicants not currently placed from the EU - excluding UK: 8 days after A level results day

Applicants in unplaced states: difference between cycle and 2018 cycle

— Holding offer  
— Free to be placed in Clearing



Note: The percentage change is not plotted in the above chart for groups with fewer than 30 unplaced applicants in any one cycle.



**A.13 Main scheme applicants not currently placed from the EU - excluding UK: 8 days after A level results day**

Applicants in unplaced states: applicants at 8 days after A level results day

Applicant type	Status	2010	2011	2012	2013	2014	2015	2016	2017	2018	2019
Main scheme	Holding offer	5,270	5,890	5,260	5,860	5,970	6,550	6,550	6,180	6,820	7,230
	Free to be placed in Clearing	15,860	16,210	14,000	14,100	14,220	14,590	14,480	13,210	13,050	13,470

**A.14 Main scheme applicants not currently placed from the EU - excluding UK: 8 days after A level results day**

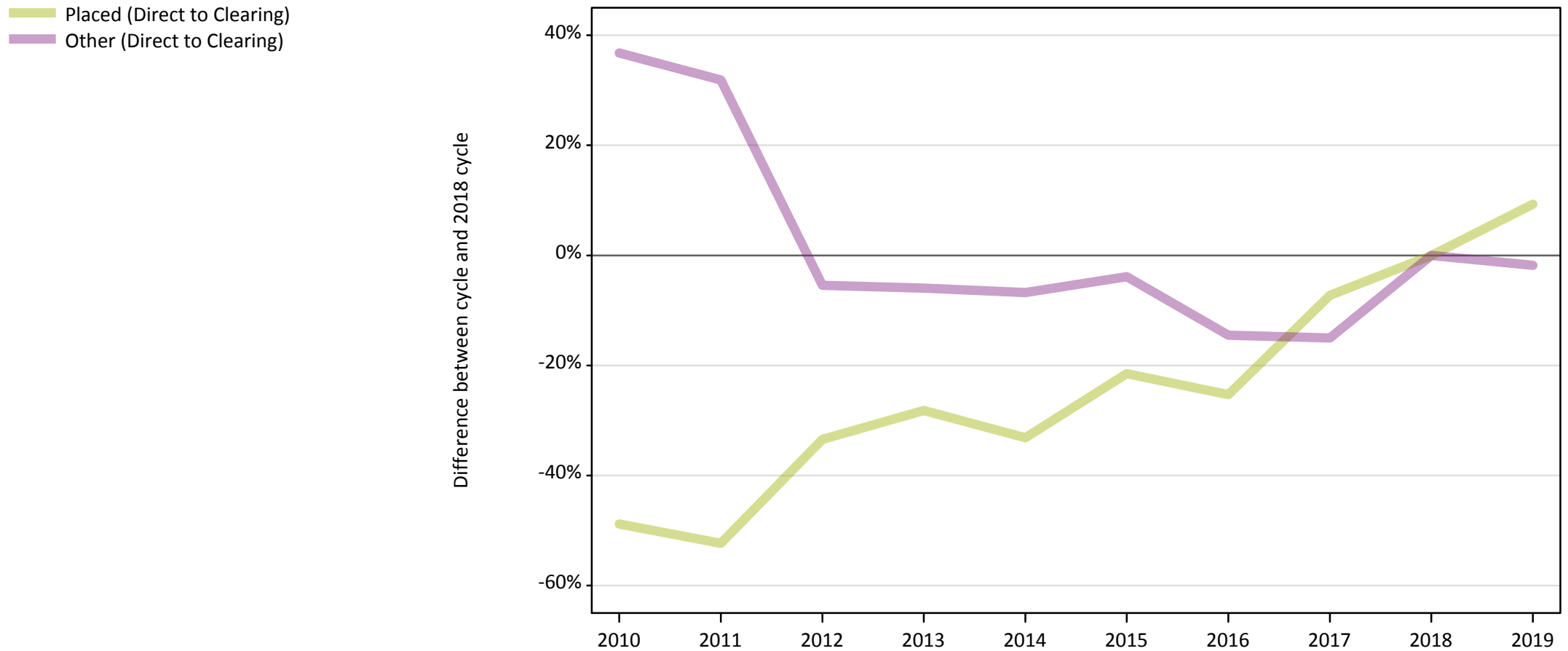
Applicants in unplaced states: difference between cycle and 2018 cycle

Applicant type	Status	2010	2011	2012	2013	2014	2015	2016	2017	2018	2019
Main scheme	Holding offer	-23%	-14%	-23%	-14%	-12%	-4%	-4%	-9%	0%	6%
	Free to be placed in Clearing	22%	24%	7%	8%	9%	12%	11%	1%	0%	3%

Note: The percentage change is not recorded in the above table for groups with fewer than 10 unplaced applicants in that cycle or in the 2018 cycle.

### A.15 Direct to Clearing applicants from the EU - excluding UK: 8 days after A level results day

Direct to Clearing: difference between cycle and 2018 cycle



Note: The percentage change is not plotted in the above chart for groups with fewer than 30 placed applicants in any one cycle.

### A.16 Direct to Clearing applicants from the EU - excluding UK: 8 days after A level results day

Direct to Clearing 8 days after A level results day

Applicant type	Status	2010	2011	2012	2013	2014	2015	2016	2017	2018	2019
Direct to Clearing	Placed (Direct to Clearing)	180	160	230	250	230	270	260	320	340	380
	Other (Direct to Clearing)	530	510	370	360	360	370	330	330	390	380

### A.17 Direct to Clearing applicants from the EU - excluding UK: 8 days after A level results day

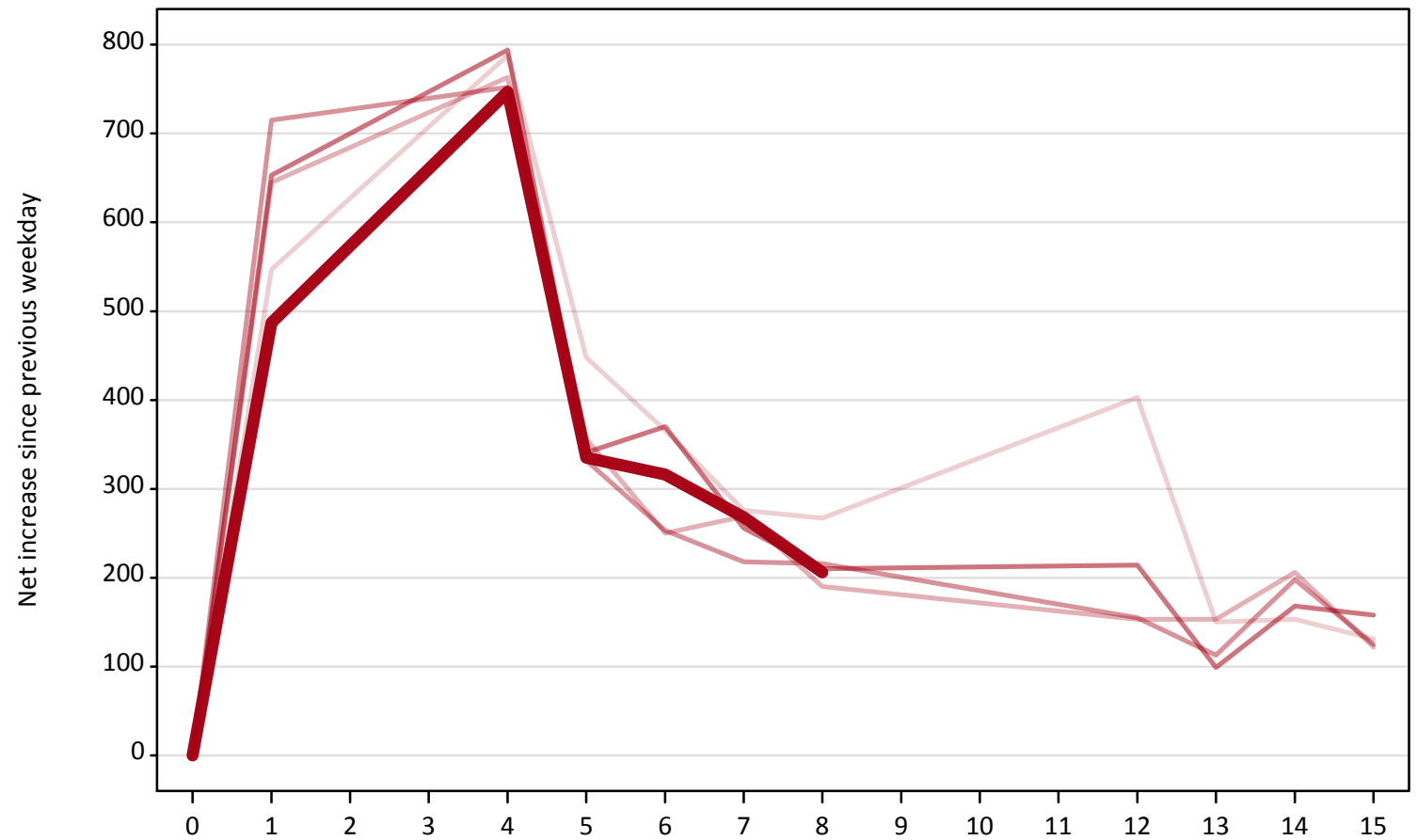
Direct to Clearing: difference between cycle and 2018 cycle

Applicant type	Status	2010	2011	2012	2013	2014	2015	2016	2017	2018	2019
Direct to Clearing	Placed (Direct to Clearing)	-49%	-52%	-33%	-28%	-33%	-22%	-25%	-7%	0%	9%
	Other (Direct to Clearing)	37%	32%	-5%	-6%	-7%	-4%	-15%	-15%	0%	-2%

Note: The percentage change is not recorded in the above table for groups with fewer than 10 placed applicants in that cycle or in the 2018 cycle.

**A.18 All Placed: Daily net change (from the EU - excluding UK)**  
Net increase since previous weekday (2019 cycle up to 8 days after A level results day)

- 2015
- 2016
- 2017
- 2018
- 2019**

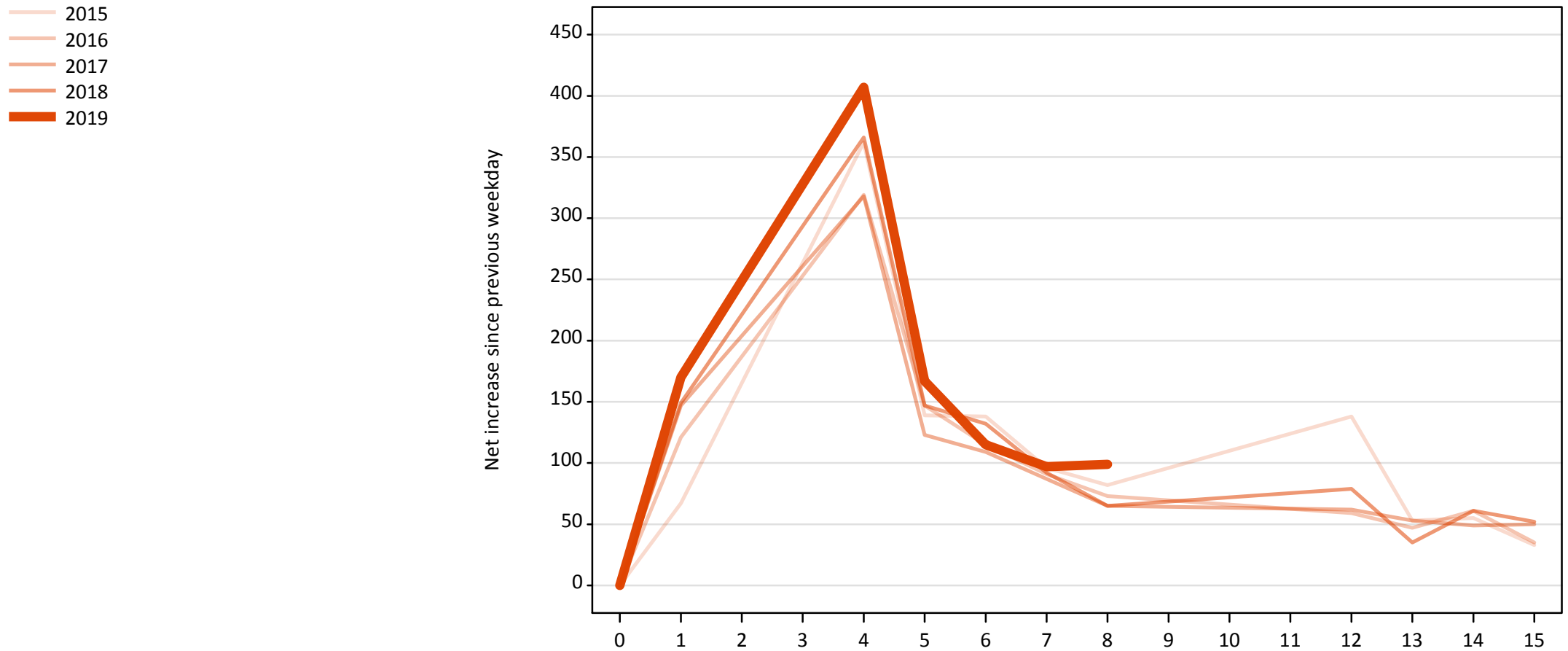


**A.19 All Placed: Daily net change (from the EU - excluding UK)**

Net increase since previous weekday (2019 cycle up to 8 days after A level results day)

Applicant status, days since A level results day		2015	2016	2017	2018	2019
All Placed	0	0	0	0	0	0
	1	550	650	720	650	490
	4	790	760	750	790	750
	5	450	360	330	340	340
	6	370	250	250	370	320
	7	280	270	220	260	270
	8	270	190	220	210	210
	12	400	150	160	210	
	13	150	150	110	100	
	14	150	210	200	170	
	15	130	120	130	160	

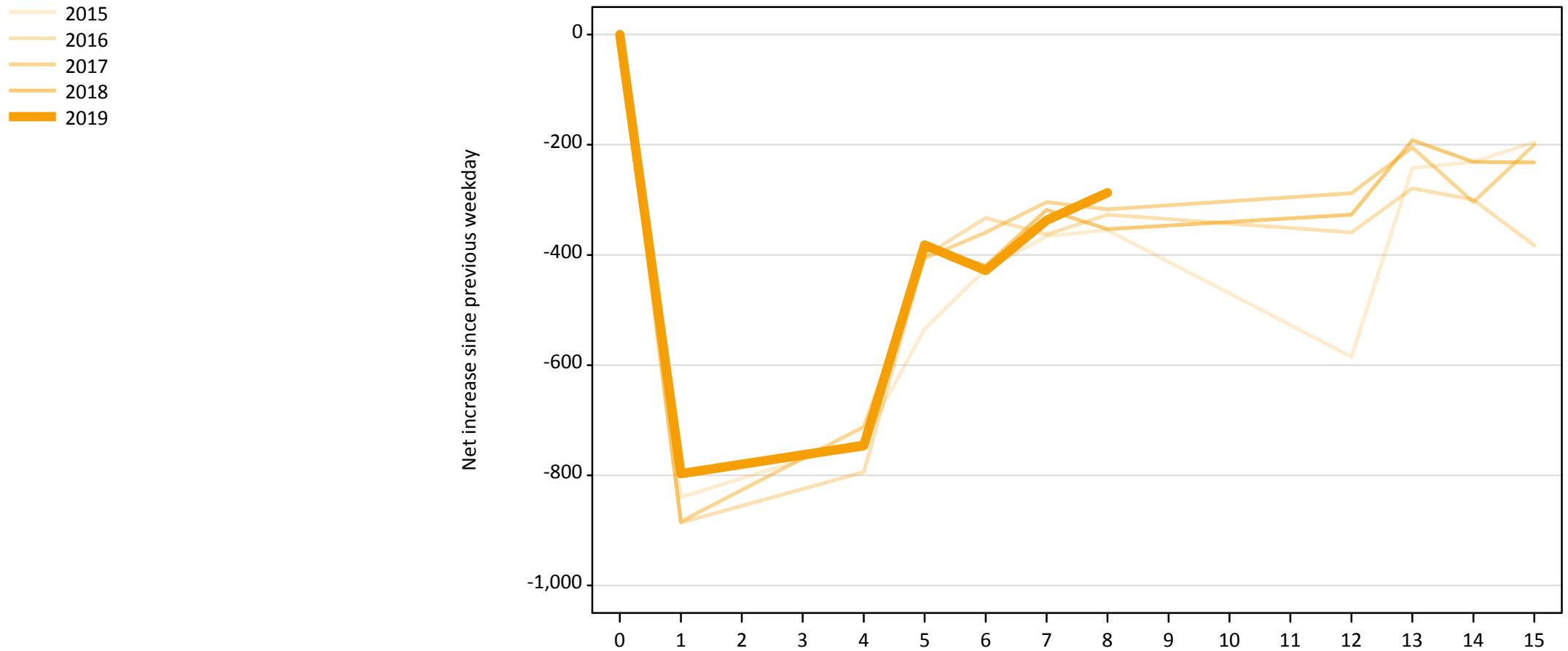
**A.20 Placed through Clearing only: Daily net change (from the EU - excluding UK)**  
Net increase since previous weekday (2019 cycle up to 8 days after A level results day)



**A.21 Placed through Clearing only: Daily net change (from the EU - excluding UK)**  
 Net increase since previous weekday (2019 cycle up to 8 days after A level results day)

Applicant status, days since A level results day		2015	2016	2017	2018	2019
Placed through Clearing only	0	0	0	0	0	0
	1	70	120	150	150	170
	4	360	320	320	370	410
	5	140	150	120	150	170
	6	140	120	110	130	120
	7	100	90	90	90	100
	8	80	70	70	70	100
	12	140	60	60	80	
	13	50	50	50	40	
	14	60	60	50	60	
	15	30	40	50	50	

**A.22 Holding Offer: Daily net change (from the EU - excluding UK)**  
Net increase since previous weekday (2019 cycle up to 8 days after A level results day)





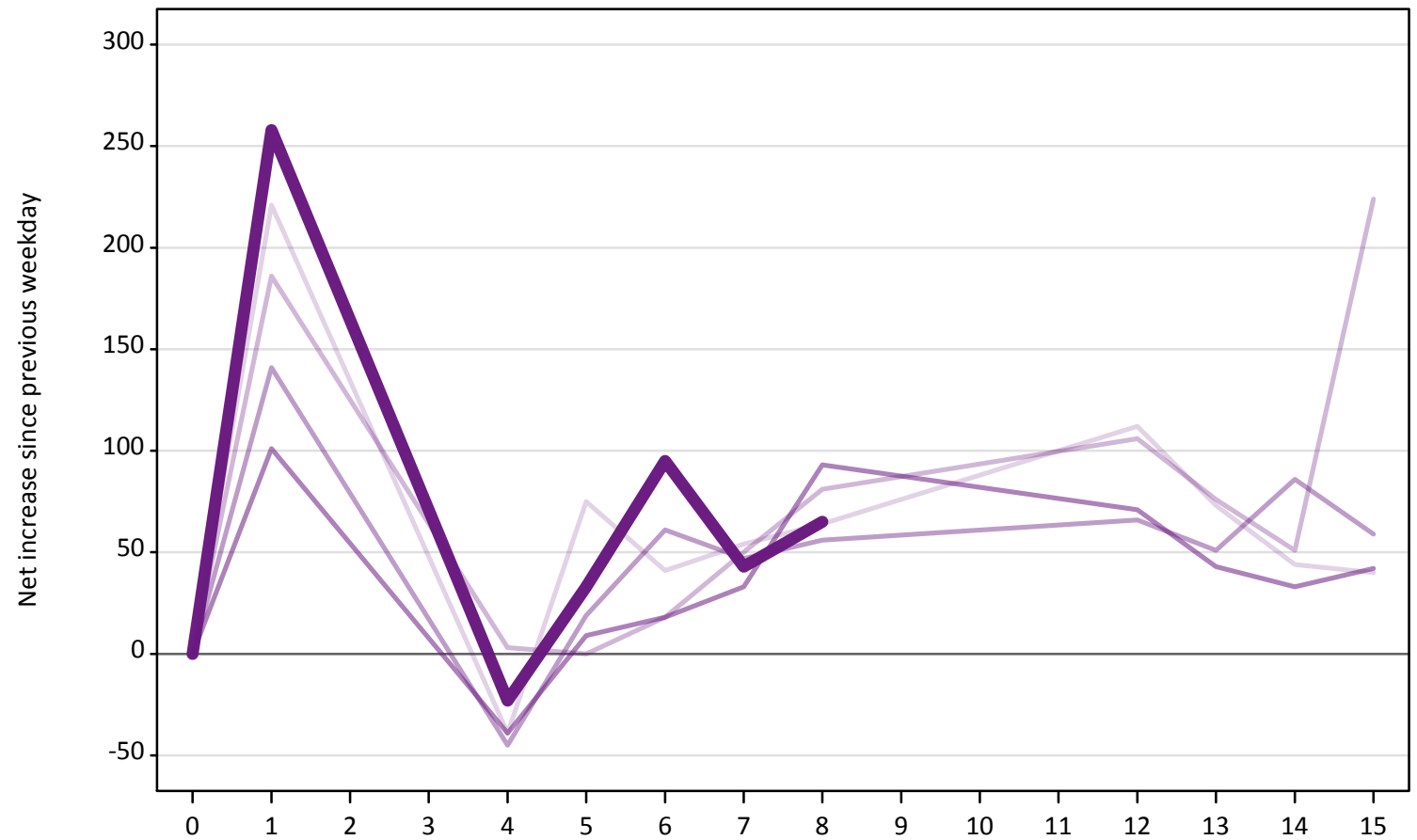
### A.23 Holding Offer: Daily net change (from the EU - excluding UK)

Net increase since previous weekday (2019 cycle up to 8 days after A level results day)

Applicant status, days since A level results day	2015	2016	2017	2018	2019	
Holding Offer	0	0	0	0	0	
	1	-840	-890	-880	-800	-800
	4	-740	-790	-710	-750	-750
	5	-530	-400	-410	-380	-380
	6	-430	-330	-360	-420	-430
	7	-370	-360	-300	-320	-340
	8	-360	-330	-320	-350	-290
	12	-590	-360	-290	-330	
	13	-240	-280	-210	-190	
	14	-230	-300	-300	-230	
	15	-200	-380	-200	-230	

**A.24 Free to be placed in Clearing: Daily net change (from the EU - excluding UK)**  
Net increase since previous weekday (2019 cycle up to 8 days after A level results day)

- 2015
- 2016
- 2017
- 2018
- 2019



**A.25 Free to be placed in Clearing: Daily net change (from the EU - excluding UK)**  
 Net increase since previous weekday (2019 cycle up to 8 days after A level results day)

Applicant status, days since A level results day		2015	2016	2017	2018	2019
Free to be placed in Clearing	0	0	0	0	0	0
	1	220	190	140	100	260
	4	-40	0	-50	-40	-20
	5	80	0	20	10	30
	6	40	20	60	20	100
	7	50	50	50	30	40
	8	60	80	60	90	70
	12	110	110	70	70	
	13	70	80	50	40	
	14	40	50	90	30	
	15	40	220	60	40	