

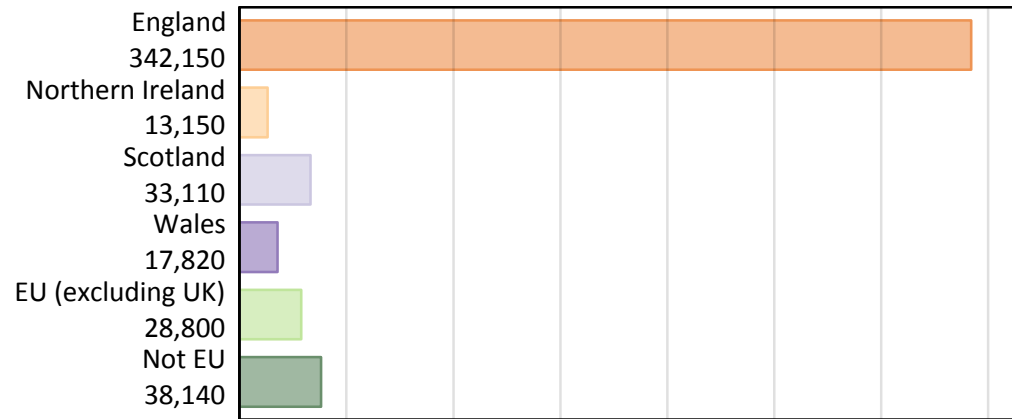
Daily Clearing Analysis: Country

Analysis at 00:05 on Friday 23 August 2019 (8 days after A level results day)

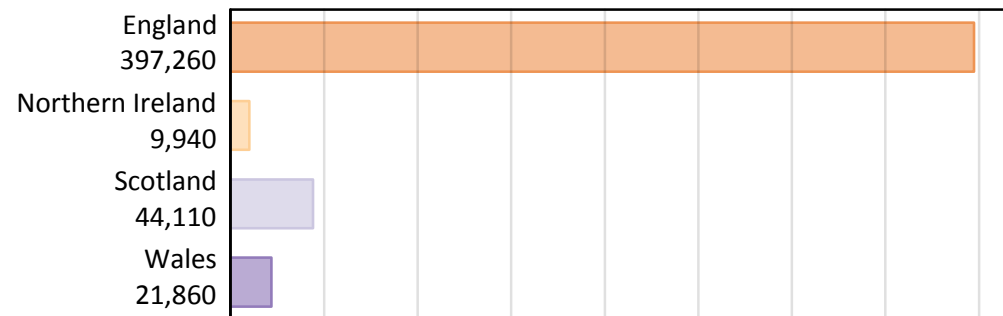
B.1 Placed applicants by country of provider and domicile, 2019 cycle

Domicile of applicant	Country of provider				
	England	Northern Ireland	Scotland	Wales	UK
England	327,860	290	4,340	9,660	342,150
Northern Ireland	3,190	8,970	880	130	13,150
Scotland	1,480	20	31,580	40	33,110
Wales	7,690	10	130	9,980	17,820
EU (excluding UK)	23,600	420	3,850	930	28,800
Not EU	33,440	240	3,330	1,130	38,140
All	397,260	9,940	44,110	21,860	473,160

B.2 Placed applicants by domicile group



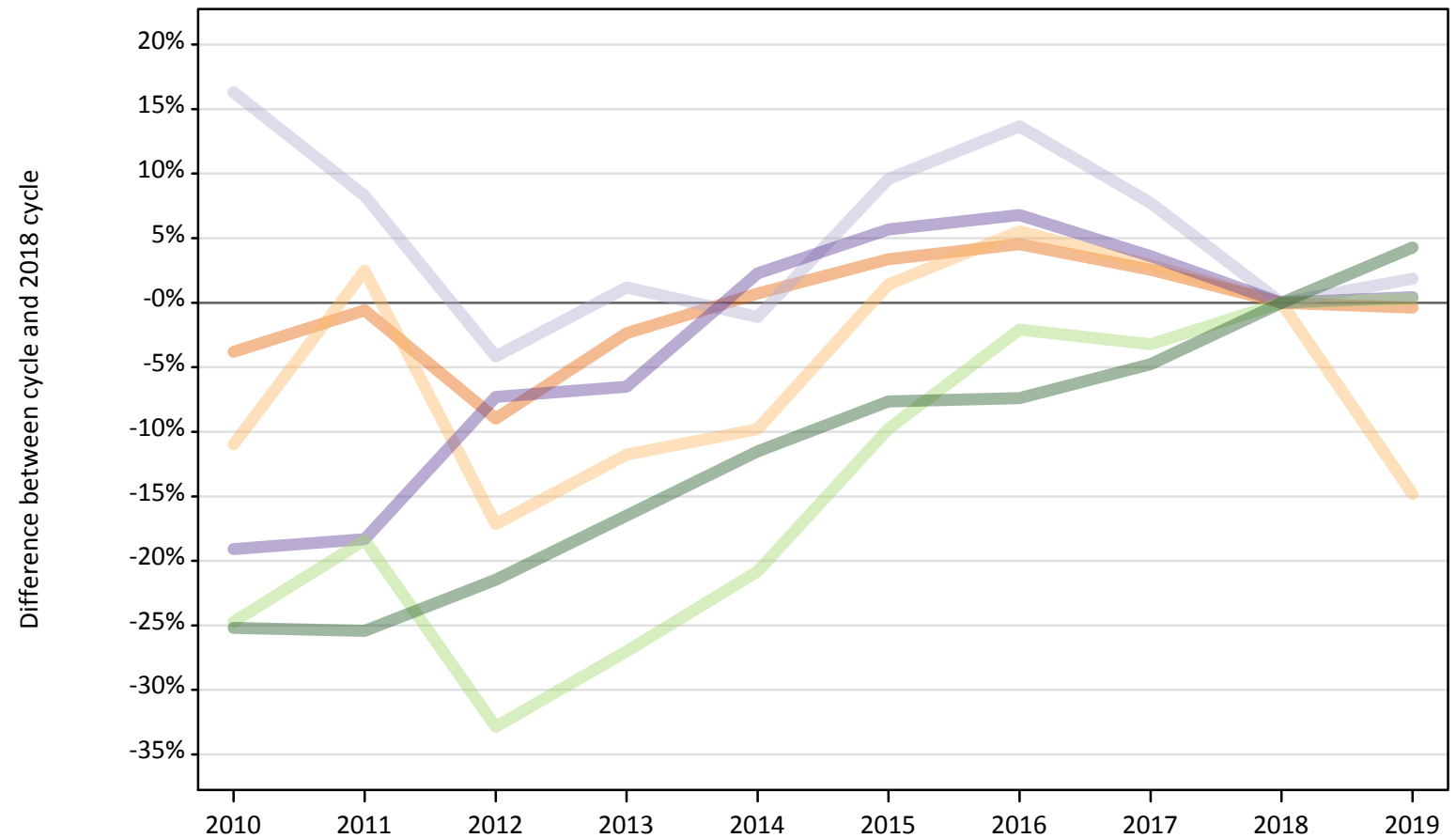
B.3 Placed applicants by country of provider



B.4 Placed applicants at 8 days after A level results day: providers in England

Selected applicant domiciles: difference between cycle and 2018 cycle (at 8 days after A level results day)

- England
- Northern Ireland
- Scotland
- Wales
- EU (excluding UK)
- Not EU



Note: The percentage change is not plotted in the above chart for groups with fewer than 30 placed applicants in any one cycle.

B.5 Placed applicants at 8 days after A level results day: providers in England

Placed applicants by domicile (at 8 days after A level results day)

Domicile of applicant	2010	2011	2012	2013	2014	2015	2016	2017	2018	2019
England	316,610	327,180	299,550	321,340	331,450	340,170	344,040	337,490	329,110	327,860
Northern Ireland	3,330	3,830	3,100	3,300	3,370	3,790	3,950	3,850	3,740	3,190
Scotland	1,680	1,570	1,390	1,470	1,430	1,590	1,650	1,560	1,450	1,480
Wales	6,200	6,260	7,100	7,160	7,840	8,090	8,180	7,940	7,660	7,690
EU (excluding UK)	17,720	19,210	15,800	17,180	18,640	21,240	23,050	22,780	23,540	23,600
Not EU	23,990	23,920	25,190	26,790	28,380	29,620	29,700	30,540	32,070	33,440

B.6 Placed applicants at 8 days after A level results day: providers in England

Selected applicant domiciles: difference between cycle and 2018 cycle (at 8 days after A level results day)

Domicile of applicant	2010	2011	2012	2013	2014	2015	2016	2017	2018	2019
England	-4%	-1%	-9%	-2%	1%	3%	5%	3%	0%	-0%
Northern Ireland	-11%	2%	-17%	-12%	-10%	1%	6%	3%	0%	-15%
Scotland	16%	8%	-4%	1%	-1%	10%	14%	8%	0%	2%
Wales	-19%	-18%	-7%	-7%	2%	6%	7%	4%	0%	0%
EU (excluding UK)	-25%	-18%	-33%	-27%	-21%	-10%	-2%	-3%	0%	0%
Not EU	-25%	-25%	-21%	-16%	-12%	-8%	-7%	-5%	0%	4%

Note: The percentage change is not recorded in the above table for groups with fewer than 10 placed applicants in that cycle or in the 2018 cycle.

B.7 Placed applicants at 8 days after A level results day: providers in Northern Ireland
Selected applicant domiciles: difference between cycle and 2018 cycle (at 8 days after A level results day)

- England
- Northern Ireland
- Scotland
- Wales
- EU (excluding UK)
- Not EU



Note: The percentage change is not plotted in the above chart for groups with fewer than 30 placed applicants in any one cycle.

B.8 Placed applicants at 8 days after A level results day: providers in Northern Ireland

Placed applicants by domicile (at 8 days after A level results day)

Domicile of applicant	2010	2011	2012	2013	2014	2015	2016	2017	2018	2019
England	210	240	250	250	360	560	310	320	310	290
Northern Ireland	8,540	8,190	8,230	9,220	9,230	8,440	9,030	8,700	8,410	8,970
Scotland	20	20	30	10	20	20	20	30	30	20
Wales	10	10	0	0	10	10	10	10	10	10
EU (excluding UK)	620	470	440	450	500	410	360	360	380	420
Not EU	70	120	170	180	180	160	220	210	270	240

B.9 Placed applicants at 8 days after A level results day: providers in Northern Ireland

Selected applicant domiciles: difference between cycle and 2018 cycle (at 8 days after A level results day)

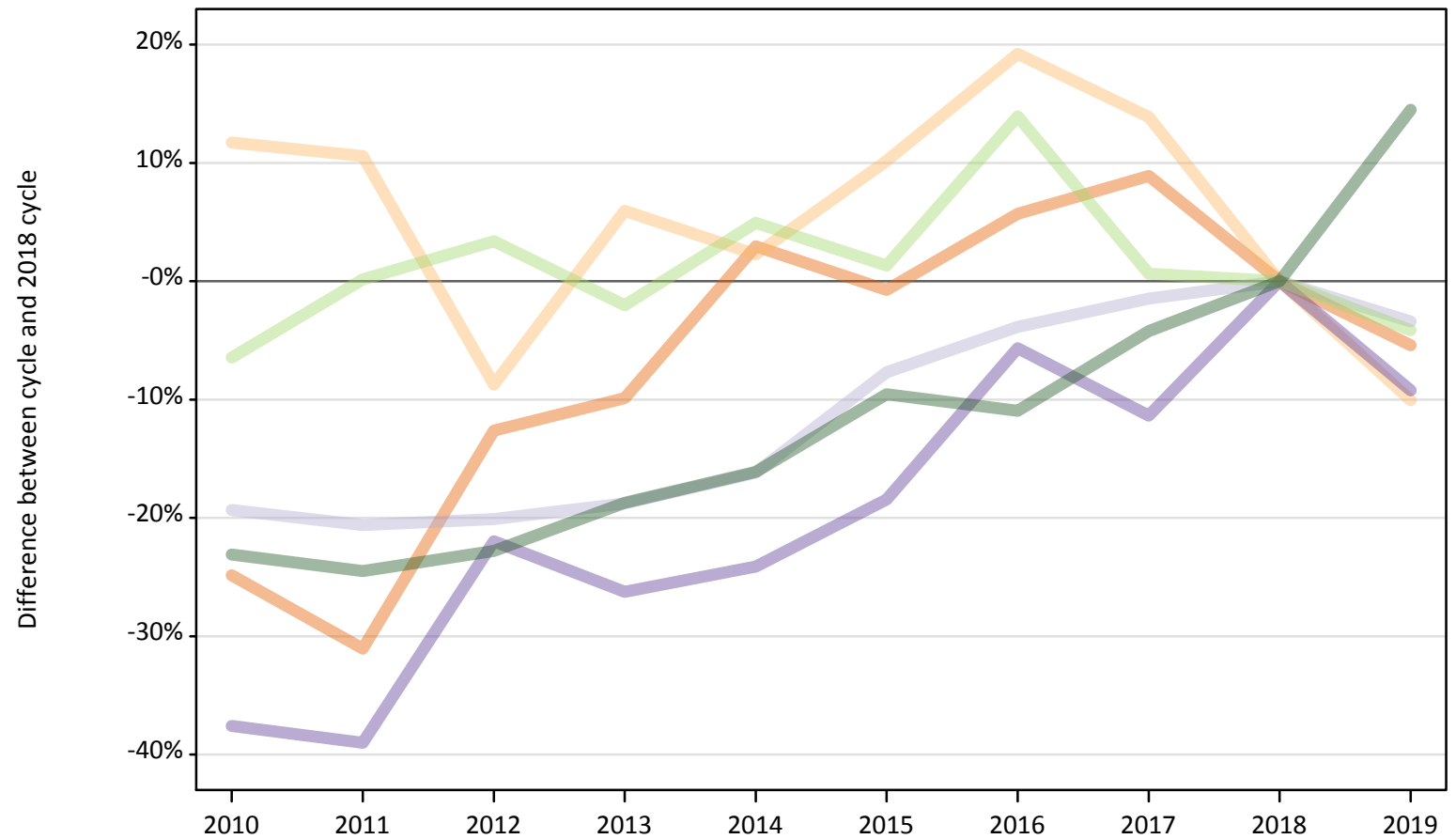
Domicile of applicant	2010	2011	2012	2013	2014	2015	2016	2017	2018	2019
England	-32%	-24%	-20%	-21%	16%	80%	-2%	2%	0%	-7%
Northern Ireland	2%	-3%	-2%	10%	10%	0%	7%	3%	0%	7%
Scotland	-8%	-31%	0%	-54%	-35%	-23%	-31%	19%	0%	-27%
Wales						10%	10%	40%	0%	20%
EU (excluding UK)	62%	22%	14%	18%	32%	7%	-5%	-6%	0%	8%
Not EU	-76%	-57%	-37%	-34%	-33%	-39%	-16%	-21%	0%	-12%

Note: The percentage change is not recorded in the above table for groups with fewer than 10 placed applicants in that cycle or in the 2018 cycle.

B.10 Placed applicants at 8 days after A level results day: providers in Scotland

Selected applicant domiciles: difference between cycle and 2018 cycle (at 8 days after A level results day)

- England
- Northern Ireland
- Scotland
- Wales
- EU (excluding UK)
- Not EU



Note: The percentage change is not plotted in the above chart for groups with fewer than 30 placed applicants in any one cycle.

B.11 Placed applicants at 8 days after A level results day: providers in Scotland

Placed applicants by domicile (at 8 days after A level results day)

Domicile of applicant	2010	2011	2012	2013	2014	2015	2016	2017	2018	2019
England	3,450	3,170	4,010	4,140	4,730	4,560	4,850	5,000	4,590	4,340
Northern Ireland	1,090	1,080	890	1,030	1,000	1,070	1,160	1,110	970	880
Scotland	26,370	25,960	26,120	26,550	27,400	30,170	31,430	32,210	32,690	31,580
Wales	90	90	110	100	110	120	130	130	140	130
EU (excluding UK)	3,760	4,020	4,150	3,930	4,210	4,070	4,570	4,040	4,010	3,850
Not EU	2,240	2,200	2,250	2,370	2,440	2,630	2,590	2,790	2,910	3,330

B.12 Placed applicants at 8 days after A level results day: providers in Scotland

Selected applicant domiciles: difference between cycle and 2018 cycle (at 8 days after A level results day)

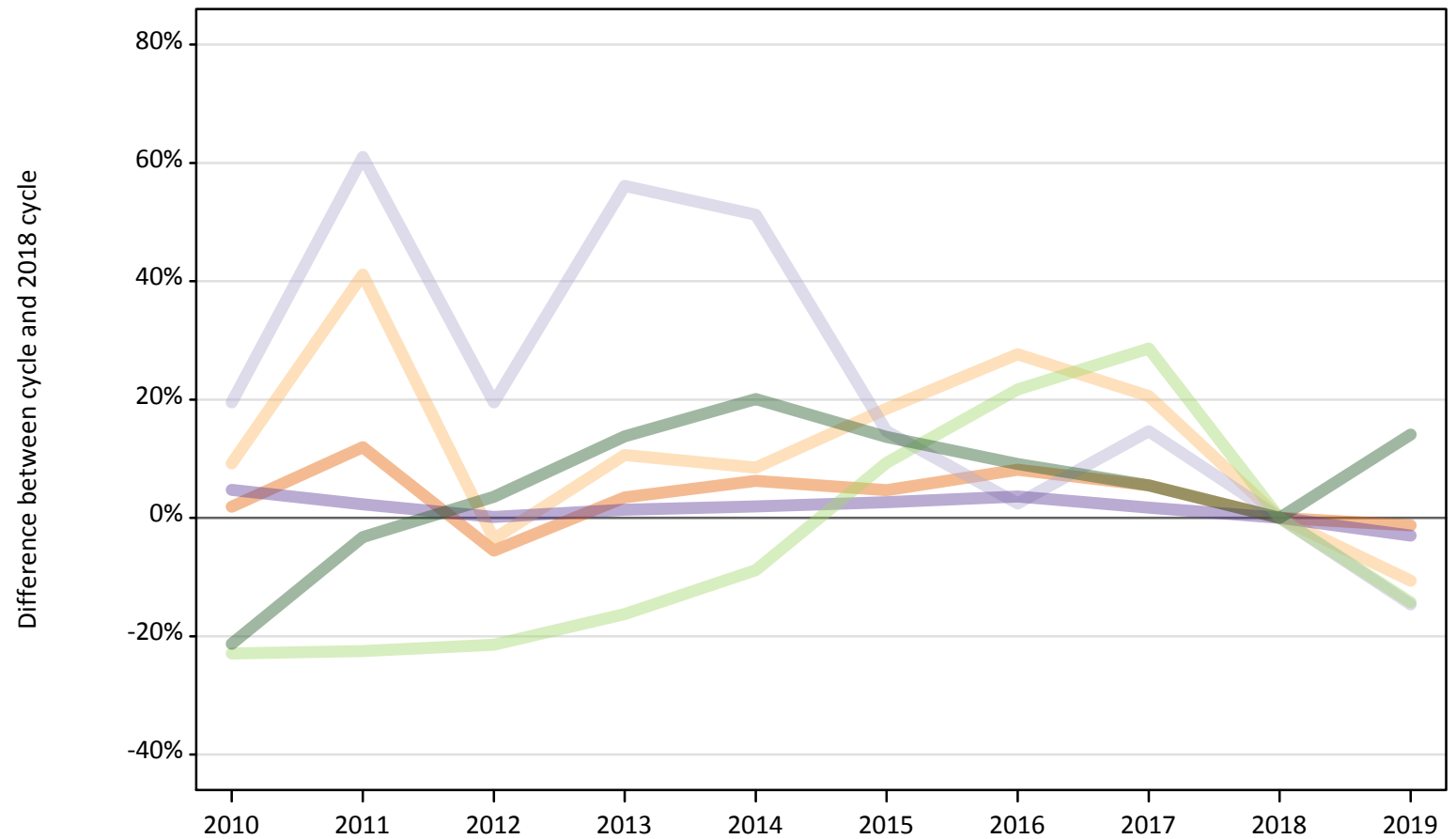
Domicile of applicant	2010	2011	2012	2013	2014	2015	2016	2017	2018	2019
England	-25%	-31%	-13%	-10%	3%	-1%	6%	9%	0%	-5%
Northern Ireland	12%	11%	-9%	6%	2%	10%	19%	14%	0%	-10%
Scotland	-19%	-21%	-20%	-19%	-16%	-8%	-4%	-1%	0%	-3%
Wales	-38%	-39%	-22%	-26%	-24%	-18%	-6%	-11%	0%	-9%
EU (excluding UK)	-6%	0%	3%	-2%	5%	1%	14%	1%	0%	-4%
Not EU	-23%	-24%	-23%	-19%	-16%	-10%	-11%	-4%	0%	14%

Note: The percentage change is not recorded in the above table for groups with fewer than 10 placed applicants in that cycle or in the 2018 cycle.

B.13 Placed applicants at 8 days after A level results day: providers in Wales

Selected applicant domiciles: difference between cycle and 2018 cycle (at 8 days after A level results day)

- England
- Northern Ireland
- Scotland
- Wales
- EU (excluding UK)
- Not EU



Note: The percentage change is not plotted in the above chart for groups with fewer than 30 placed applicants in any one cycle.

B.14 Placed applicants at 8 days after A level results day: providers in Wales

Placed applicants by domicile (at 8 days after A level results day)

Domicile of applicant	2010	2011	2012	2013	2014	2015	2016	2017	2018	2019
England	9,970	10,960	9,250	10,130	10,400	10,250	10,580	10,330	9,790	9,660
Northern Ireland	150	200	140	160	150	170	180	170	140	130
Scotland	50	70	50	60	60	50	40	50	40	40
Wales	10,780	10,520	10,310	10,430	10,490	10,560	10,660	10,470	10,290	9,980
EU (excluding UK)	840	840	850	910	990	1,190	1,320	1,400	1,090	930
Not EU	780	960	1,020	1,120	1,190	1,120	1,080	1,040	990	1,130

B.15 Placed applicants at 8 days after A level results day: providers in Wales

Selected applicant domiciles: difference between cycle and 2018 cycle (at 8 days after A level results day)

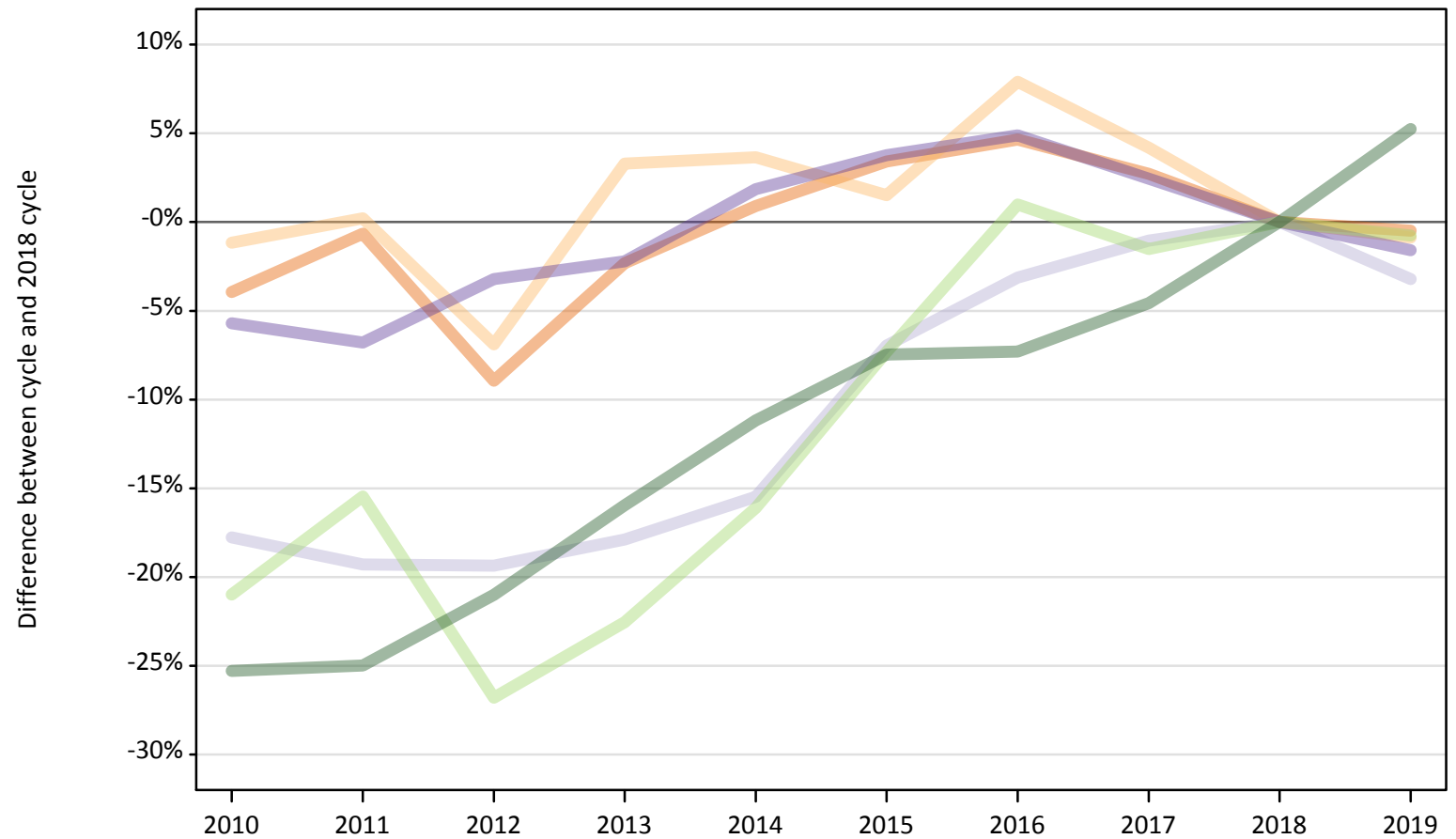
Domicile of applicant	2010	2011	2012	2013	2014	2015	2016	2017	2018	2019
England	2%	12%	-6%	3%	6%	5%	8%	6%	0%	-1%
Northern Ireland	9%	41%	-4%	11%	9%	18%	28%	21%	0%	-11%
Scotland	20%	61%	20%	56%	51%	15%	2%	15%	0%	-15%
Wales	5%	2%	0%	1%	2%	3%	4%	2%	0%	-3%
EU (excluding UK)	-23%	-23%	-21%	-16%	-9%	9%	22%	29%	0%	-14%
Not EU	-21%	-3%	4%	14%	20%	14%	9%	5%	0%	14%

Note: The percentage change is not recorded in the above table for groups with fewer than 10 placed applicants in that cycle or in the 2018 cycle.

B.16 Placed applicants at 8 days after A level results day: providers in the UK

Selected applicant domiciles: difference between cycle and 2018 cycle (at 8 days after A level results day)

- England
- Northern Ireland
- Scotland
- Wales
- EU (excluding UK)
- Not EU



Note: The percentage change is not plotted in the above chart for groups with fewer than 30 placed applicants in any one cycle.

B.17 Placed applicants at 8 days after A level results day: providers in the UK

Placed applicants by domicile (at 8 days after A level results day)

Domicile of applicant	2010	2011	2012	2013	2014	2015	2016	2017	2018	2019
England	330,250	341,540	313,060	335,850	346,940	355,540	359,780	353,140	343,800	342,150
Northern Ireland	13,110	13,300	12,350	13,700	13,750	13,470	14,320	13,820	13,270	13,150
Scotland	28,130	27,610	27,580	28,090	28,910	31,830	33,140	33,850	34,200	33,110
Wales	17,070	16,870	17,520	17,700	18,440	18,780	18,990	18,540	18,100	17,820
EU (excluding UK)	22,930	24,530	21,240	22,480	24,340	26,900	29,310	28,580	29,020	28,800
Not EU	27,070	27,190	28,630	30,450	32,190	33,530	33,590	34,580	36,240	38,140

B.18 Placed applicants at 8 days after A level results day: providers in the UK

Selected applicant domiciles: difference between cycle and 2018 cycle (at 8 days after A level results day)

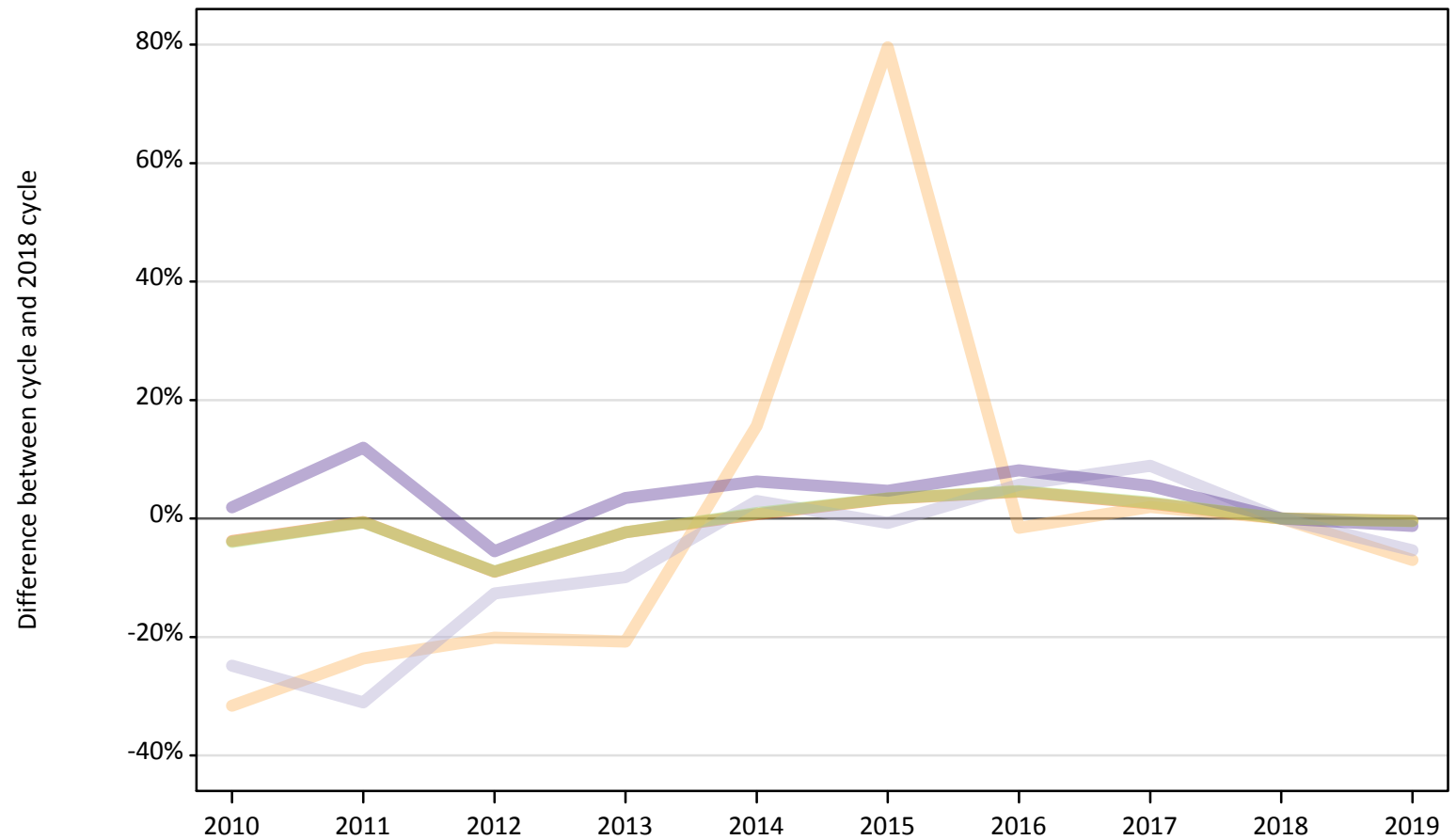
Domicile of applicant	2010	2011	2012	2013	2014	2015	2016	2017	2018	2019
England	-4%	-1%	-9%	-2%	1%	3%	5%	3%	0%	-0%
Northern Ireland	-1%	0%	-7%	3%	4%	2%	8%	4%	0%	-1%
Scotland	-18%	-19%	-19%	-18%	-15%	-7%	-3%	-1%	0%	-3%
Wales	-6%	-7%	-3%	-2%	2%	4%	5%	2%	0%	-2%
EU (excluding UK)	-21%	-15%	-27%	-23%	-16%	-7%	1%	-2%	0%	-1%
Not EU	-25%	-25%	-21%	-16%	-11%	-7%	-7%	-5%	0%	5%

Note: The percentage change is not recorded in the above table for groups with fewer than 10 placed applicants in that cycle or in the 2018 cycle.

B.19 Placed applicants at 8 days after A level results day: domiciled in England

Selected provider countries: difference between cycle and 2018 cycle (at 8 days after A level results day)

- England
- Northern Ireland
- Scotland
- Wales
- UK



Note: The percentage change is not plotted in the above chart for groups with fewer than 30 placed applicants in any one cycle.

B.20 Placed applicants at 8 days after A level results day: domiciled in England

Placed applicants by provider country (at 8 days after A level results day)

Country of provider	2010	2011	2012	2013	2014	2015	2016	2017	2018	2019
England	316,610	327,180	299,550	321,340	331,450	340,170	344,040	337,490	329,110	327,860
Northern Ireland	210	240	250	250	360	560	310	320	310	290
Scotland	3,450	3,170	4,010	4,140	4,730	4,560	4,850	5,000	4,590	4,340
Wales	9,970	10,960	9,250	10,130	10,400	10,250	10,580	10,330	9,790	9,660
UK	330,250	341,540	313,060	335,850	346,940	355,540	359,780	353,140	343,800	342,150

B.21 Placed applicants at 8 days after A level results day: domiciled in England

Selected provider countries: difference between cycle and 2018 cycle (at 8 days after A level results day)

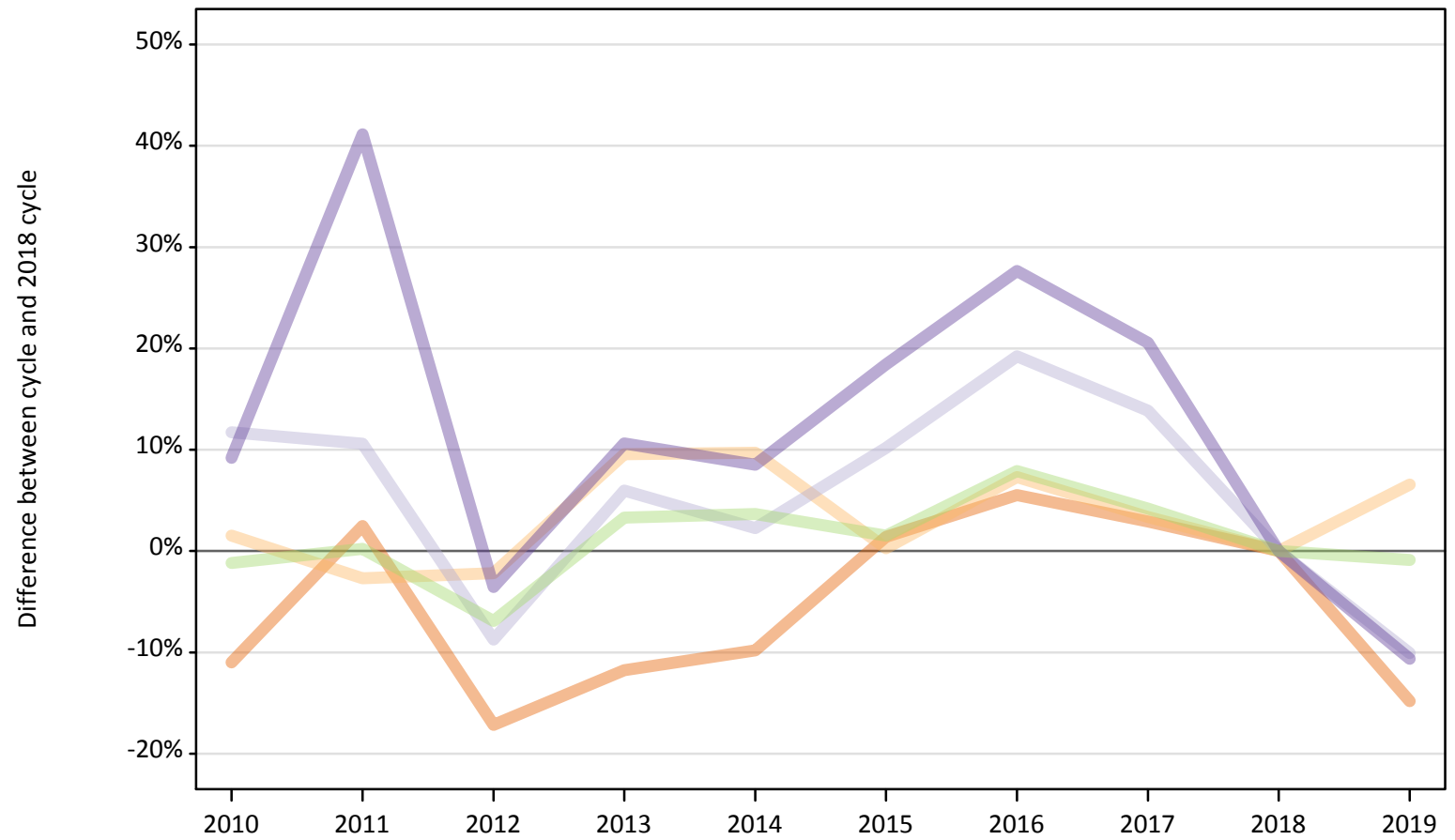
Country of provider	2010	2011	2012	2013	2014	2015	2016	2017	2018	2019
England	-4%	-1%	-9%	-2%	1%	3%	5%	3%	0%	-0%
Northern Ireland	-32%	-24%	-20%	-21%	16%	80%	-2%	2%	0%	-7%
Scotland	-25%	-31%	-13%	-10%	3%	-1%	6%	9%	0%	-5%
Wales	2%	12%	-6%	3%	6%	5%	8%	6%	0%	-1%
UK	-4%	-1%	-9%	-2%	1%	3%	5%	3%	0%	-0%

Note: The percentage change is not recorded in the above table for groups with fewer than 10 placed applicants in that cycle or in the 2018 cycle.

B.22 Placed applicants at 8 days after A level results day: domiciled in Northern Ireland

Selected provider countries: difference between cycle and 2018 cycle (at 8 days after A level results day)

- England
- Northern Ireland
- Scotland
- Wales
- UK



Note: The percentage change is not plotted in the above chart for groups with fewer than 30 placed applicants in any one cycle.

B.23 Placed applicants at 8 days after A level results day: domiciled in Northern Ireland

Placed applicants by provider country (at 8 days after A level results day)

Country of provider	2010	2011	2012	2013	2014	2015	2016	2017	2018	2019
England	3,330	3,830	3,100	3,300	3,370	3,790	3,950	3,850	3,740	3,190
Northern Ireland	8,540	8,190	8,230	9,220	9,230	8,440	9,030	8,700	8,410	8,970
Scotland	1,090	1,080	890	1,030	1,000	1,070	1,160	1,110	970	880
Wales	150	200	140	160	150	170	180	170	140	130
UK	13,110	13,300	12,350	13,700	13,750	13,470	14,320	13,820	13,270	13,150

B.24 Placed applicants at 8 days after A level results day: domiciled in Northern Ireland

Selected provider countries: difference between cycle and 2018 cycle (at 8 days after A level results day)

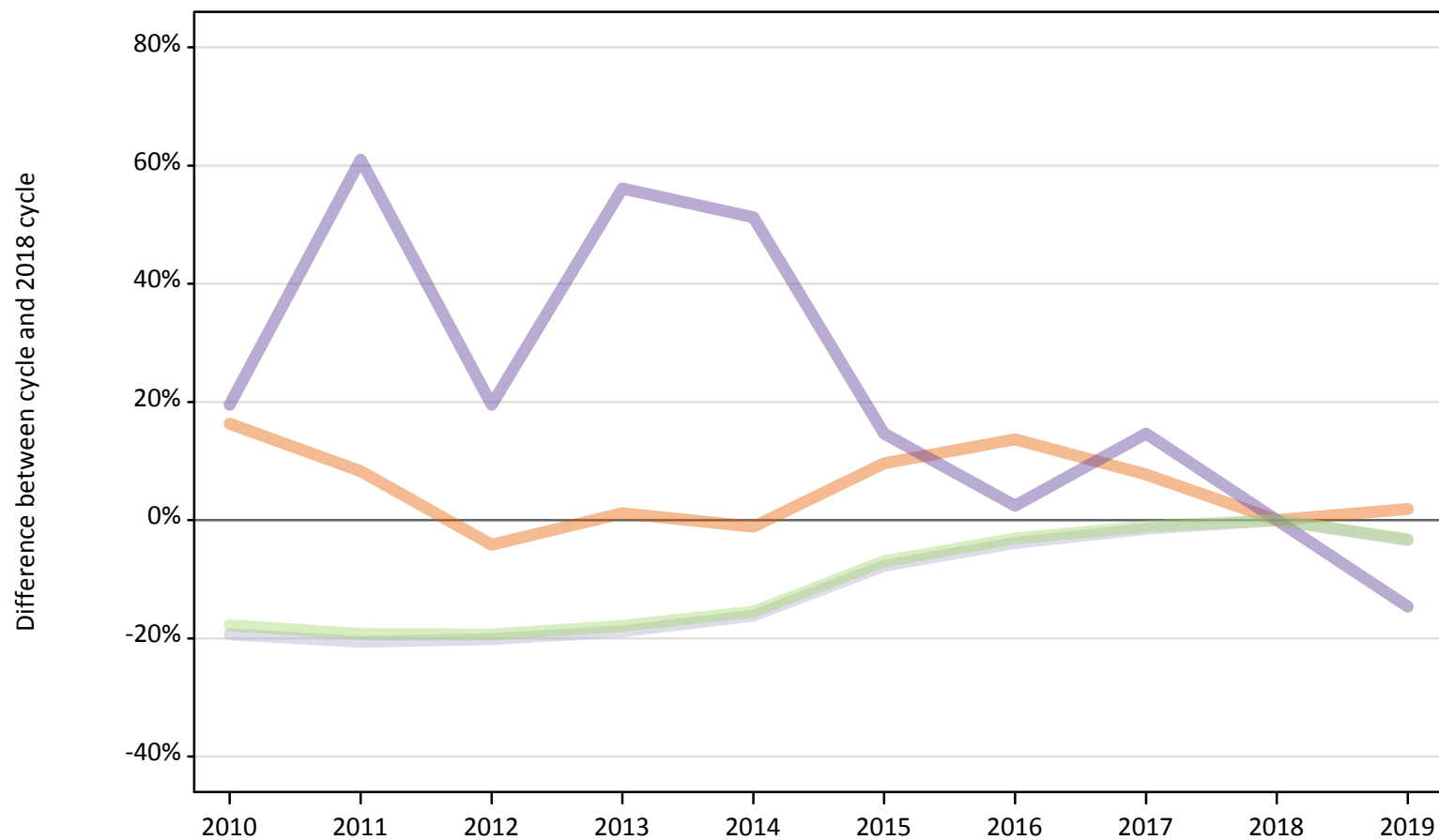
Country of provider	2010	2011	2012	2013	2014	2015	2016	2017	2018	2019
England	-11%	2%	-17%	-12%	-10%	1%	6%	3%	0%	-15%
Northern Ireland	2%	-3%	-2%	10%	10%	0%	7%	3%	0%	7%
Scotland	12%	11%	-9%	6%	2%	10%	19%	14%	0%	-10%
Wales	9%	41%	-4%	11%	9%	18%	28%	21%	0%	-11%
UK	-1%	0%	-7%	3%	4%	2%	8%	4%	0%	-1%

Note: The percentage change is not recorded in the above table for groups with fewer than 10 placed applicants in that cycle or in the 2018 cycle.

B.25 Placed applicants at 8 days after A level results day: domiciled in Scotland

Selected provider countries: difference between cycle and 2018 cycle (at 8 days after A level results day)

- England
- Northern Ireland
- Scotland
- Wales
- UK



Note: The percentage change is not plotted in the above chart for groups with fewer than 30 placed applicants in any one cycle.

B.26 Placed applicants at 8 days after A level results day: domiciled in Scotland

Placed applicants by provider country (at 8 days after A level results day)

Country of provider	2010	2011	2012	2013	2014	2015	2016	2017	2018	2019
England	1,680	1,570	1,390	1,470	1,430	1,590	1,650	1,560	1,450	1,480
Northern Ireland	20	20	30	10	20	20	20	30	30	20
Scotland	26,370	25,960	26,120	26,550	27,400	30,170	31,430	32,210	32,690	31,580
Wales	50	70	50	60	60	50	40	50	40	40
UK	28,130	27,610	27,580	28,090	28,910	31,830	33,140	33,850	34,200	33,110

B.27 Placed applicants at 8 days after A level results day: domiciled in Scotland

Selected provider countries: difference between cycle and 2018 cycle (at 8 days after A level results day)

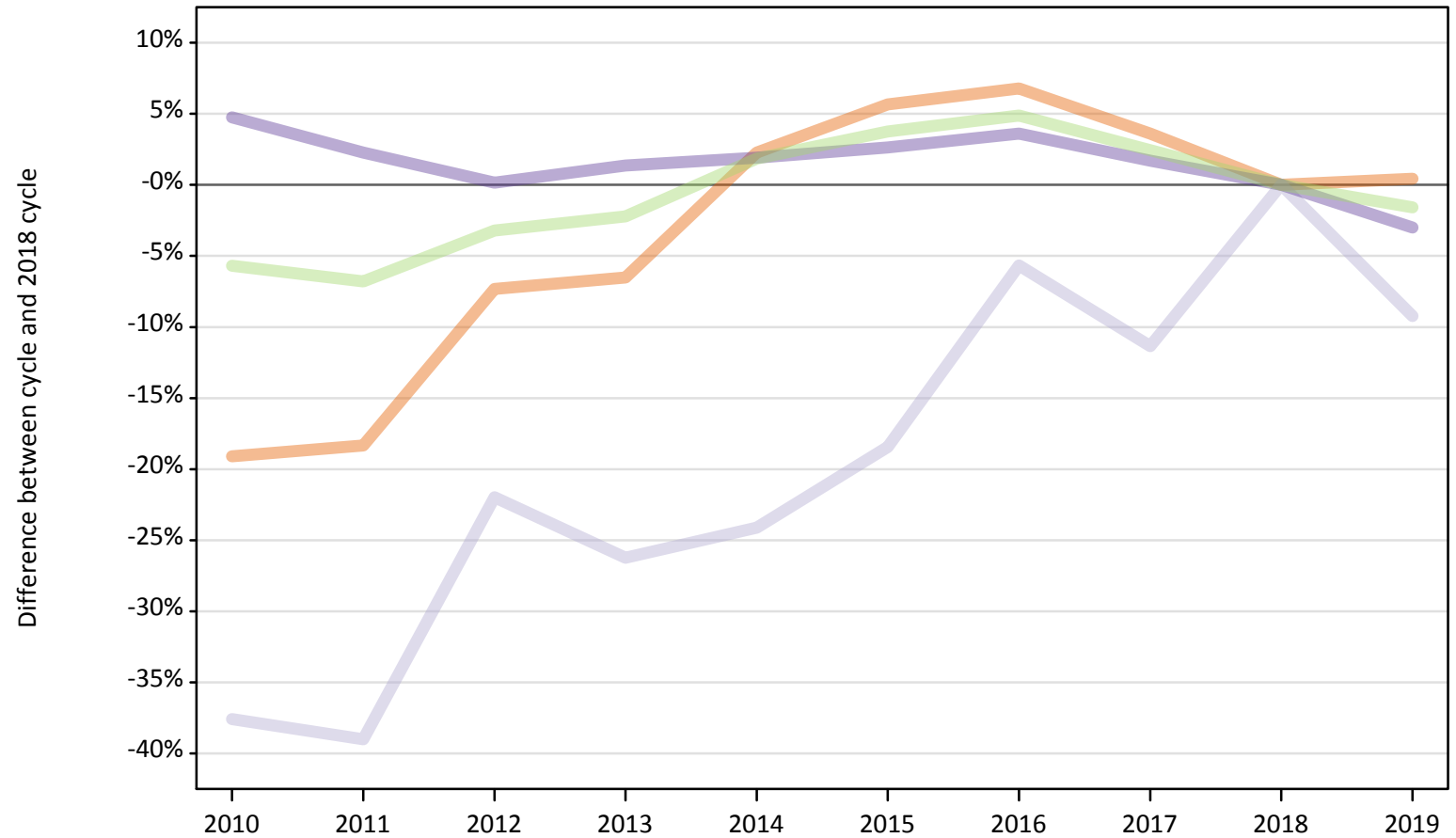
Country of provider	2010	2011	2012	2013	2014	2015	2016	2017	2018	2019
England	16%	8%	-4%	1%	-1%	10%	14%	8%	0%	2%
Northern Ireland	-8%	-31%	0%	-54%	-35%	-23%	-31%	19%	0%	-27%
Scotland	-19%	-21%	-20%	-19%	-16%	-8%	-4%	-1%	0%	-3%
Wales	20%	61%	20%	56%	51%	15%	2%	15%	0%	-15%
UK	-18%	-19%	-19%	-18%	-15%	-7%	-3%	-1%	0%	-3%

Note: The percentage change is not recorded in the above table for groups with fewer than 10 placed applicants in that cycle or in the 2018 cycle.

B.28 Placed applicants at 8 days after A level results day: domiciled in Wales

Selected provider countries: difference between cycle and 2018 cycle (at 8 days after A level results day)

- England
- Northern Ireland
- Scotland
- Wales
- UK



Note: The percentage change is not plotted in the above chart for groups with fewer than 30 placed applicants in any one cycle.

B.29 Placed applicants at 8 days after A level results day: domiciled in Wales

Placed applicants by provider country (at 8 days after A level results day)

Country of provider	2010	2011	2012	2013	2014	2015	2016	2017	2018	2019
England	6,200	6,260	7,100	7,160	7,840	8,090	8,180	7,940	7,660	7,690
Northern Ireland	10	10	0	0	10	10	10	10	10	10
Scotland	90	90	110	100	110	120	130	130	140	130
Wales	10,780	10,520	10,310	10,430	10,490	10,560	10,660	10,470	10,290	9,980
UK	17,070	16,870	17,520	17,700	18,440	18,780	18,990	18,540	18,100	17,820

B.30 Placed applicants at 8 days after A level results day: domiciled in Wales

Selected provider countries: difference between cycle and 2018 cycle (at 8 days after A level results day)

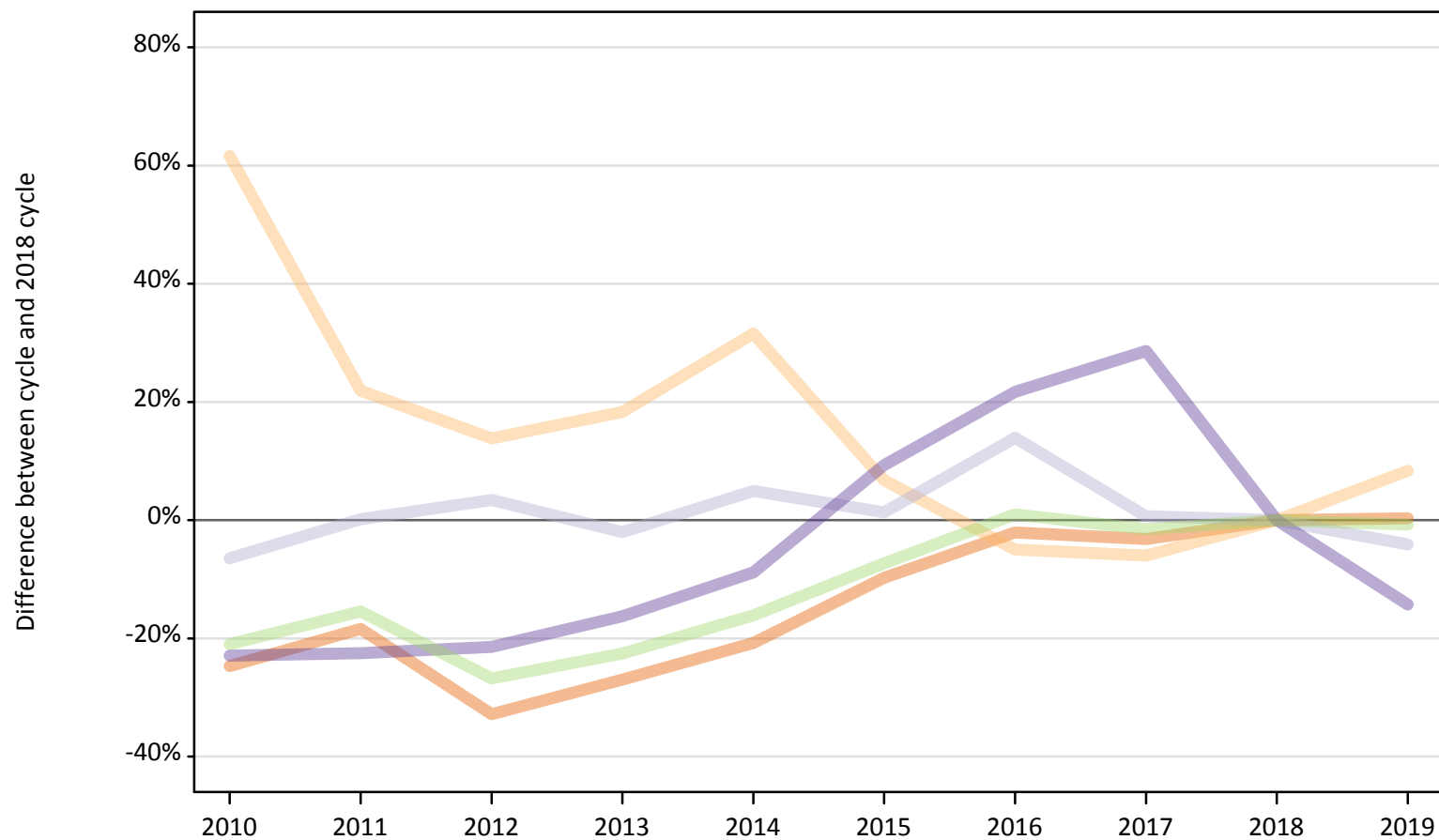
Country of provider	2010	2011	2012	2013	2014	2015	2016	2017	2018	2019
England	-19%	-18%	-7%	-7%	2%	6%	7%	4%	0%	0%
Northern Ireland						10%	10%	40%	0%	20%
Scotland	-38%	-39%	-22%	-26%	-24%	-18%	-6%	-11%	0%	-9%
Wales	5%	2%	0%	1%	2%	3%	4%	2%	0%	-3%
UK	-6%	-7%	-3%	-2%	2%	4%	5%	2%	0%	-2%

Note: The percentage change is not recorded in the above table for groups with fewer than 10 placed applicants in that cycle or in the 2018 cycle.

B.31 Placed applicants at 8 days after A level results day: domiciled in EU (excluding UK)

Selected provider countries: difference between cycle and 2018 cycle (at 8 days after A level results day)

- England
- Northern Ireland
- Scotland
- Wales
- UK



Note: The percentage change is not plotted in the above chart for groups with fewer than 30 placed applicants in any one cycle.

B.32 Placed applicants at 8 days after A level results day: domiciled in EU (excluding UK)

Placed applicants by provider country (at 8 days after A level results day)

Country of provider	2010	2011	2012	2013	2014	2015	2016	2017	2018	2019
England	17,720	19,210	15,800	17,180	18,640	21,240	23,050	22,780	23,540	23,600
Northern Ireland	620	470	440	450	500	410	360	360	380	420
Scotland	3,760	4,020	4,150	3,930	4,210	4,070	4,570	4,040	4,010	3,850
Wales	840	840	850	910	990	1,190	1,320	1,400	1,090	930
UK	22,930	24,530	21,240	22,480	24,340	26,900	29,310	28,580	29,020	28,800

B.33 Placed applicants at 8 days after A level results day: domiciled in EU (excluding UK)

Selected provider countries: difference between cycle and 2018 cycle (at 8 days after A level results day)

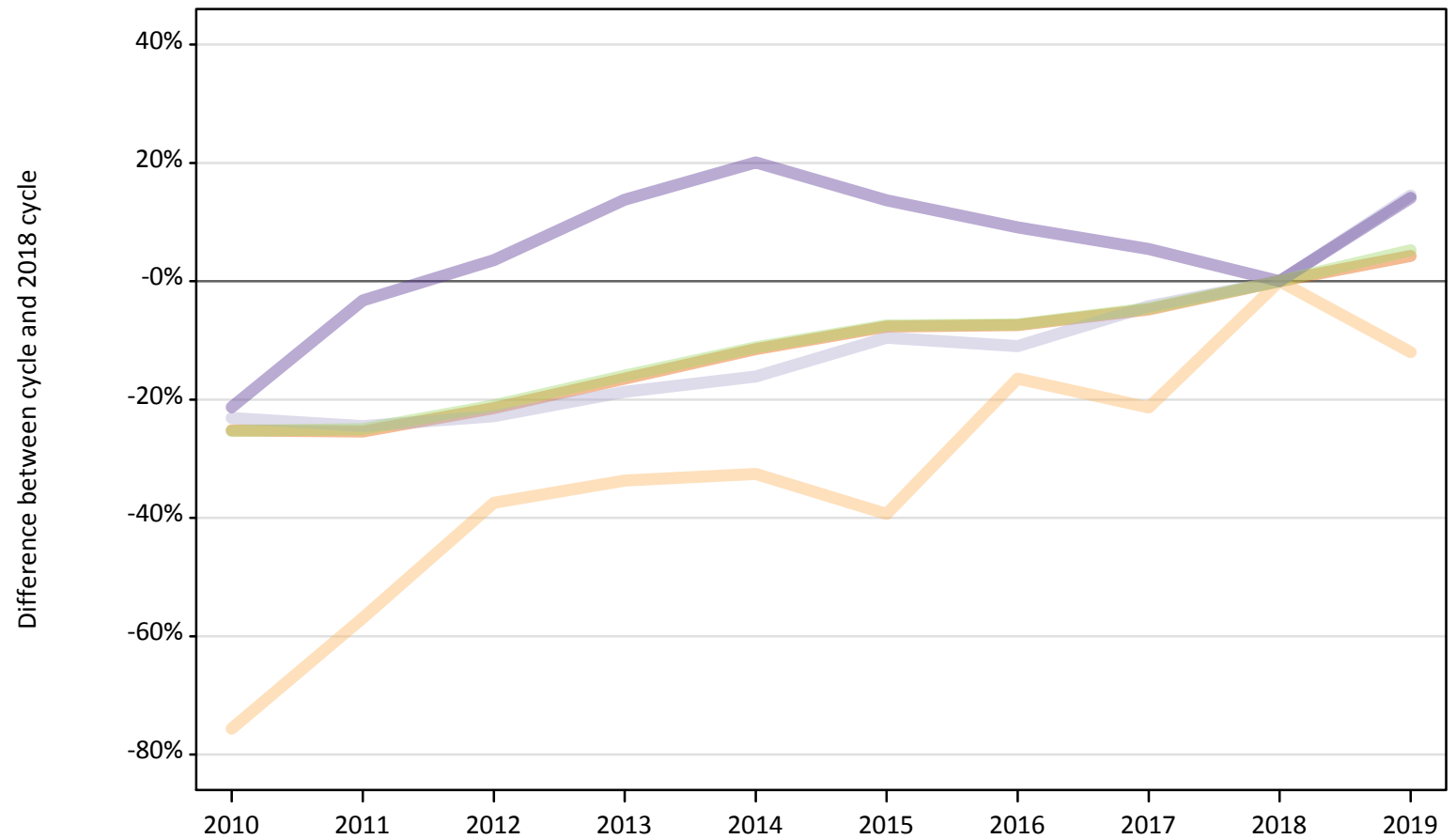
Country of provider	2010	2011	2012	2013	2014	2015	2016	2017	2018	2019
England	-25%	-18%	-33%	-27%	-21%	-10%	-2%	-3%	0%	0%
Northern Ireland	62%	22%	14%	18%	32%	7%	-5%	-6%	0%	8%
Scotland	-6%	0%	3%	-2%	5%	1%	14%	1%	0%	-4%
Wales	-23%	-23%	-21%	-16%	-9%	9%	22%	29%	0%	-14%
UK	-21%	-15%	-27%	-23%	-16%	-7%	1%	-2%	0%	-1%

Note: The percentage change is not recorded in the above table for groups with fewer than 10 placed applicants in that cycle or in the 2018 cycle.

B.34 Placed applicants at 8 days after A level results day: domiciled in Not EU

Selected provider countries: difference between cycle and 2018 cycle (at 8 days after A level results day)

- England
- Northern Ireland
- Scotland
- Wales
- UK



Note: The percentage change is not plotted in the above chart for groups with fewer than 30 placed applicants in any one cycle.

B.35 Placed applicants at 8 days after A level results day: domiciled in Not EU

Placed applicants by provider country (at 8 days after A level results day)

Country of provider	2010	2011	2012	2013	2014	2015	2016	2017	2018	2019
England	23,990	23,920	25,190	26,790	28,380	29,620	29,700	30,540	32,070	33,440
Northern Ireland	70	120	170	180	180	160	220	210	270	240
Scotland	2,240	2,200	2,250	2,370	2,440	2,630	2,590	2,790	2,910	3,330
Wales	780	960	1,020	1,120	1,190	1,120	1,080	1,040	990	1,130
UK	27,070	27,190	28,630	30,450	32,190	33,530	33,590	34,580	36,240	38,140

B.36 Placed applicants at 8 days after A level results day: domiciled in Not EU

Selected provider countries: difference between cycle and 2018 cycle (at 8 days after A level results day)

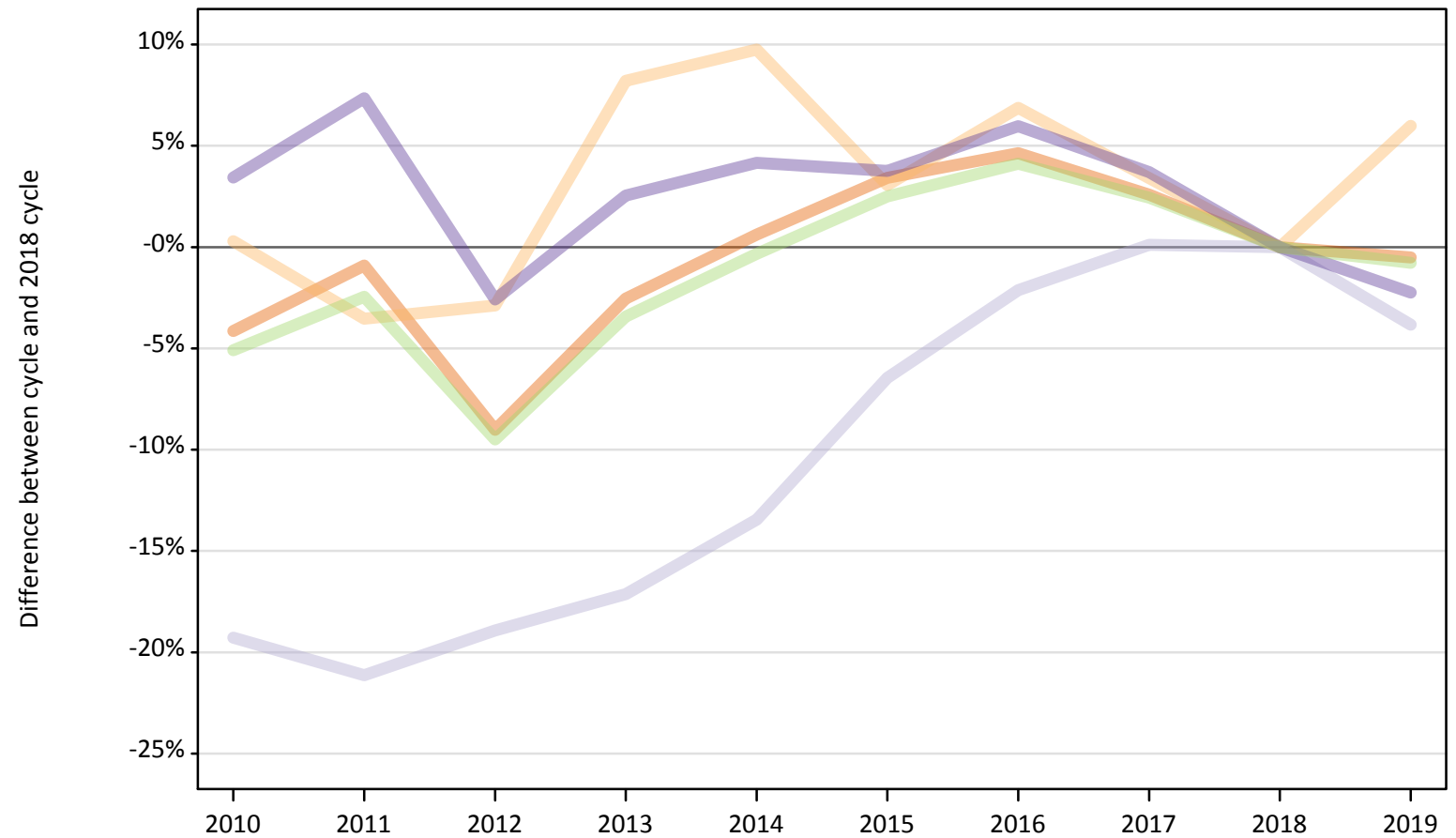
Country of provider	2010	2011	2012	2013	2014	2015	2016	2017	2018	2019
England	-25%	-25%	-21%	-16%	-12%	-8%	-7%	-5%	0%	4%
Northern Ireland	-76%	-57%	-37%	-34%	-33%	-39%	-16%	-21%	0%	-12%
Scotland	-23%	-24%	-23%	-19%	-16%	-10%	-11%	-4%	0%	14%
Wales	-21%	-3%	4%	14%	20%	14%	9%	5%	0%	14%
UK	-25%	-25%	-21%	-16%	-11%	-7%	-7%	-5%	0%	5%

Note: The percentage change is not recorded in the above table for groups with fewer than 10 placed applicants in that cycle or in the 2018 cycle.

B.37 Placed applicants at 8 days after A level results day: domiciled in UK

Selected provider countries: difference between cycle and 2018 cycle (at 8 days after A level results day)

- England
- Northern Ireland
- Scotland
- Wales
- UK



Note: The percentage change is not plotted in the above chart for groups with fewer than 30 placed applicants in any one cycle.

B.38 Placed applicants at 8 days after A level results day: domiciled in UK

Placed applicants by provider country (at 8 days after A level results day)

Country of provider	2010	2011	2012	2013	2014	2015	2016	2017	2018	2019
England	327,820	338,840	311,140	333,270	344,090	353,650	357,810	350,840	341,960	340,210
Northern Ireland	8,790	8,450	8,510	9,480	9,620	9,030	9,370	9,060	8,760	9,290
Scotland	30,990	30,280	31,130	31,820	33,230	35,920	37,580	38,440	38,390	36,920
Wales	20,950	21,750	19,740	20,780	21,100	21,020	21,470	21,010	20,260	19,810
UK	388,560	399,320	370,520	395,340	408,040	419,620	426,220	419,350	409,370	406,230

B.39 Placed applicants at 8 days after A level results day: domiciled in UK

Selected provider countries: difference between cycle and 2018 cycle (at 8 days after A level results day)

Country of provider	2010	2011	2012	2013	2014	2015	2016	2017	2018	2019
England	-4%	-1%	-9%	-3%	1%	3%	5%	3%	0%	-1%
Northern Ireland	0%	-4%	-3%	8%	10%	3%	7%	3%	0%	6%
Scotland	-19%	-21%	-19%	-17%	-13%	-6%	-2%	0%	0%	-4%
Wales	3%	7%	-3%	3%	4%	4%	6%	4%	0%	-2%
UK	-5%	-2%	-9%	-3%	-0%	3%	4%	2%	0%	-1%

Note: The percentage change is not recorded in the above table for groups with fewer than 10 placed applicants in that cycle or in the 2018 cycle.