

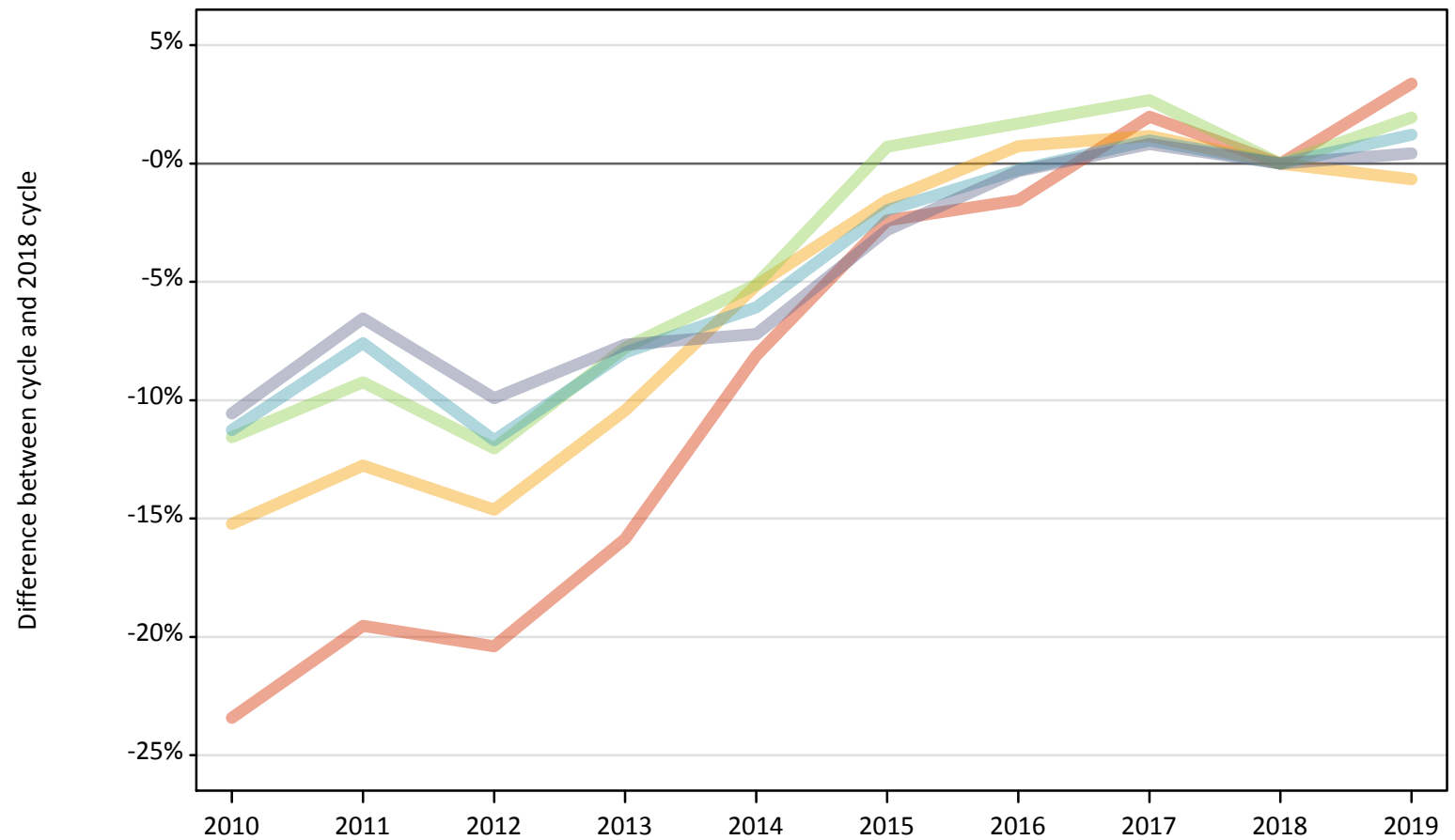
Daily Clearing Analysis: POLAR4

Analysis at 00:05 on Friday 23 August 2019 (8 days after A level results day)

P.1 Placed 18 year old applicants from England by POLAR4 quintile: 8 days after A level results day

Placed 18 year old applicants: change relative to 2018 cycle totals

- Quintile 1
- Quintile 2
- Quintile 3
- Quintile 4
- Quintile 5



Note: The percentage change is not plotted in the above chart for groups with fewer than 30 placed applicants in any one cycle.

P.2 Placed 18 year old applicants from England by POLAR4 quintile: 8 days after A level results day

Applicant Status	POLAR4	2010	2011	2012	2013	2014	2015	2016	2017	2018	2019
Placed	Quintile 1	16,690	17,530	17,350	18,330	20,020	21,270	21,450	22,220	21,790	22,530
	Quintile 2	25,740	26,490	25,920	27,190	28,800	29,890	30,590	30,720	30,360	30,160
	Quintile 3	32,760	33,620	32,580	34,160	35,150	37,300	37,660	38,030	37,040	37,760
	Quintile 4	40,960	42,660	40,760	42,470	43,350	45,250	46,030	46,610	46,160	46,720
	Quintile 5	58,950	61,610	59,380	60,870	61,170	64,060	65,710	66,460	65,920	66,200

P.3 Placed 18 year old applicants from England by POLAR4 quintile: 8 days after A level results day

Placed 18 year old applicants: change relative to 2018 cycle totals

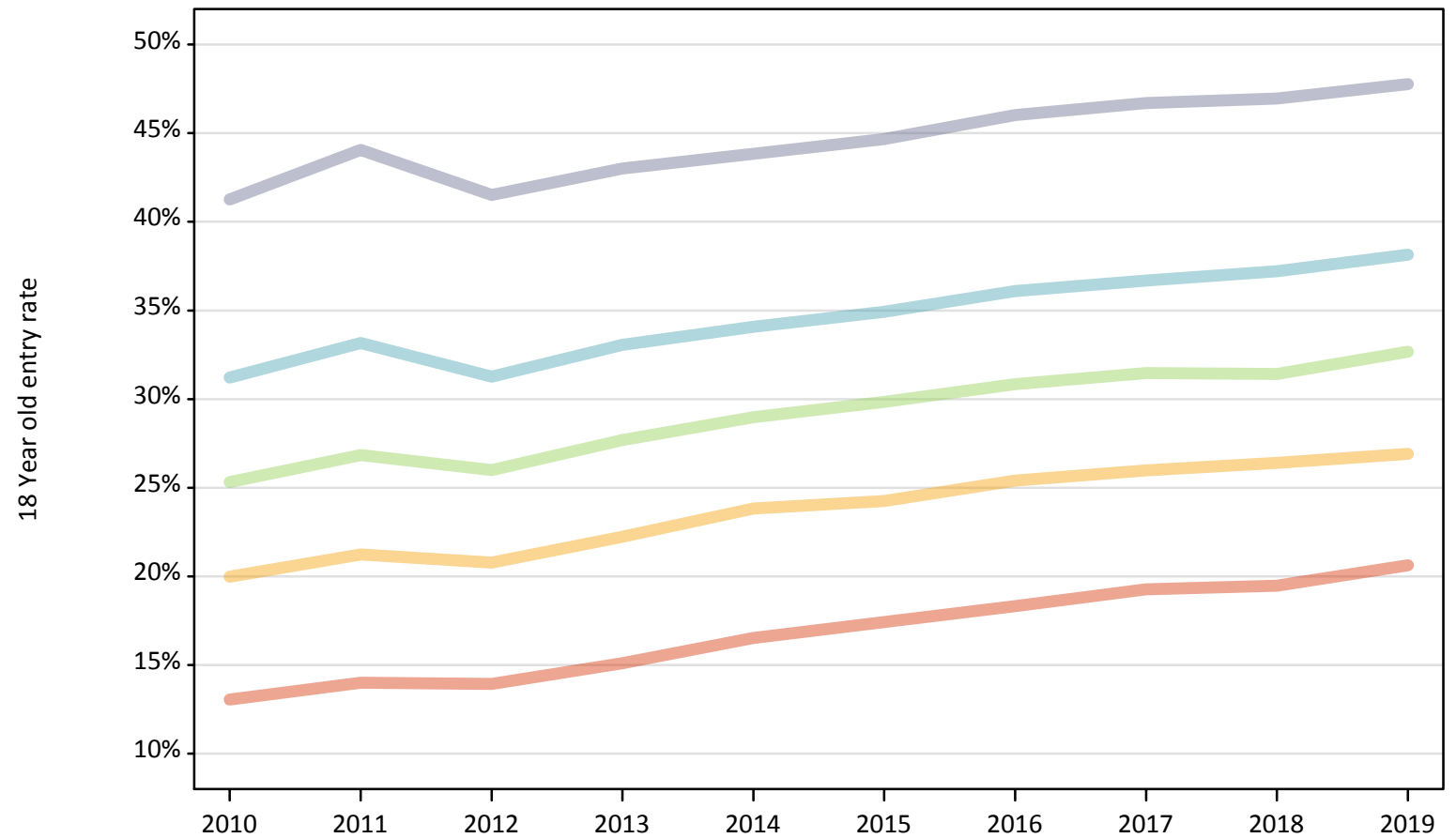
Applicant Status	POLAR4	2010	2011	2012	2013	2014	2015	2016	2017	2018	2019
Placed	Quintile 1	-23%	-20%	-20%	-16%	-8%	-2%	-2%	2%	0%	3%
	Quintile 2	-15%	-13%	-15%	-10%	-5%	-2%	1%	1%	0%	-1%
	Quintile 3	-12%	-9%	-12%	-8%	-5%	1%	2%	3%	0%	2%
	Quintile 4	-11%	-8%	-12%	-8%	-6%	-2%	-0%	1%	0%	1%
	Quintile 5	-11%	-7%	-10%	-8%	-7%	-3%	-0%	1%	0%	0%

Note: The percentage change is not recorded in the above table for groups with fewer than 10 placed applicants in that cycle or in the 2018 cycle.

P.4 Placed 18 year old applicants from England by POLAR4 quintile: 8 days after A level results day

Placed 18 year old applicants: entry rate

- Quintile 1
- Quintile 2
- Quintile 3
- Quintile 4
- Quintile 5



P.5 Placed 18 year old applicants from England by POLAR4 quintile: 8 days after A level results day

Placed 18 year old applicants: entry rate

Applicant Status	POLAR4	2010	2011	2012	2013	2014	2015	2016	2017	2018	2019
Placed	Quintile 1	13.0%	14.0%	13.9%	15.1%	16.5%	17.4%	18.3%	19.3%	19.5%	20.6%
	Quintile 2	20.0%	21.2%	20.8%	22.2%	23.8%	24.3%	25.4%	26.0%	26.4%	26.9%
	Quintile 3	25.3%	26.8%	26.0%	27.7%	29.0%	29.8%	30.8%	31.5%	31.4%	32.7%
	Quintile 4	31.2%	33.2%	31.3%	33.1%	34.1%	34.9%	36.1%	36.7%	37.2%	38.1%
	Quintile 5	41.3%	44.1%	41.5%	43.0%	43.8%	44.7%	46.0%	46.7%	47.0%	47.8%

P.6 Placed 18 year old applicants from England by POLAR4 quintile: 8 days after A level results day

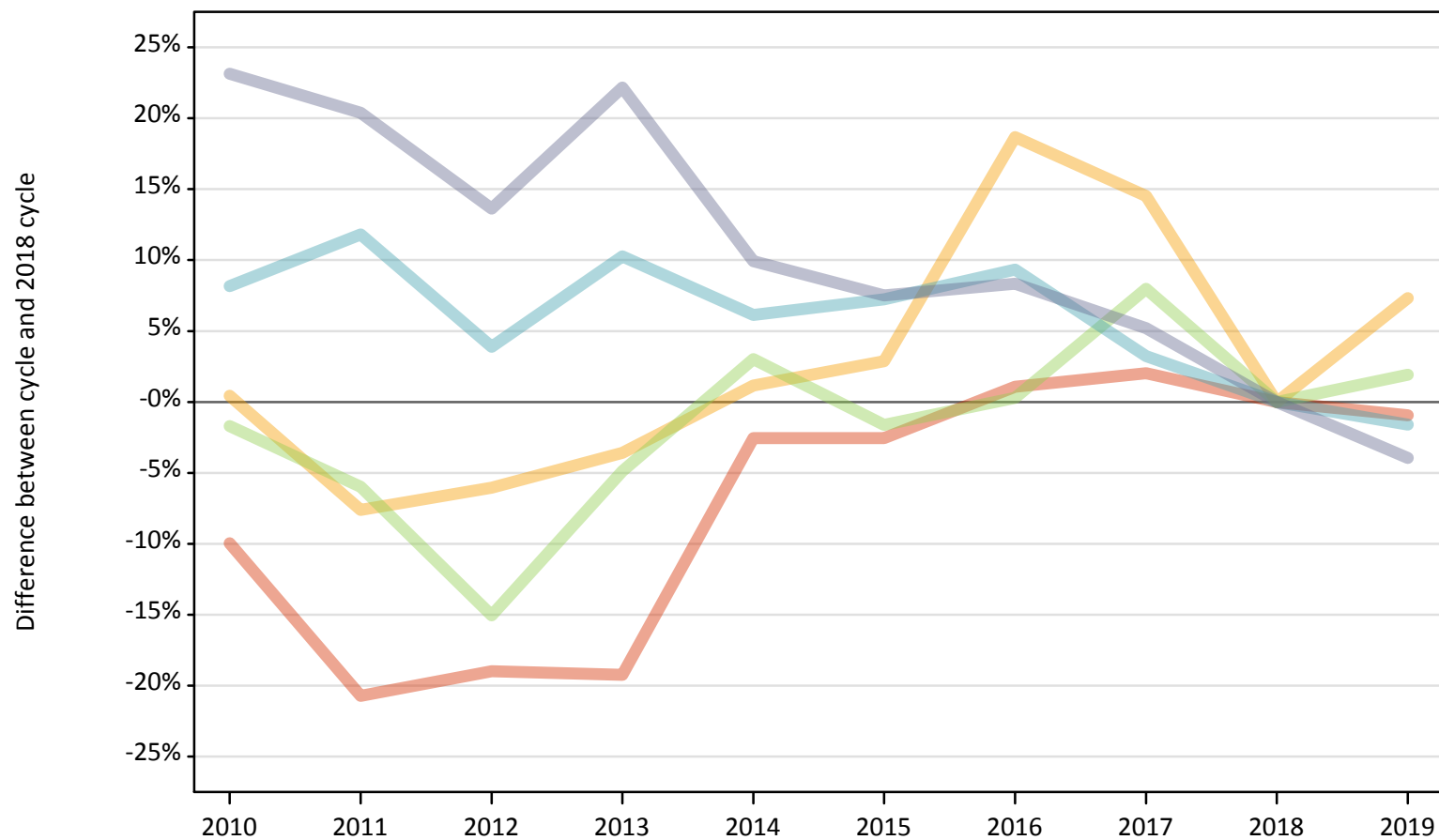
Placed 18 year old applicants: entry rate (indexed to 100 = Quintile 1)

Applicant Status	POLAR4	2010	2011	2012	2013	2014	2015	2016	2017	2018	2019
Placed	Quintile 1	100	100	100	100	100	100	100	100	100	100
	Quintile 2	153	152	149	147	144	139	139	135	136	130
	Quintile 3	194	192	187	183	175	171	168	163	161	158
	Quintile 4	239	237	224	219	206	201	197	190	191	185
	Quintile 5	316	315	298	285	265	257	251	242	241	232

P.7 Placed 18 year old applicants from Northern Ireland by POLAR4 quintile: 8 days after A level results day

Placed 18 year old applicants: change relative to 2018 cycle totals

- Quintile 1
- Quintile 2
- Quintile 3
- Quintile 4
- Quintile 5



Note: The percentage change is not plotted in the above chart for groups with fewer than 30 placed applicants in any one cycle.

P.8 Placed 18 year old applicants from Northern Ireland by POLAR4 quintile: 8 days after A level results day

Applicant Status	POLAR4	2010	2011	2012	2013	2014	2015	2016	2017	2018	2019
Placed	Quintile 1	670	590	600	600	720	720	750	760	740	740
	Quintile 2	700	640	650	670	700	720	830	800	700	750
	Quintile 3	1,330	1,270	1,150	1,290	1,400	1,330	1,360	1,460	1,360	1,380
	Quintile 4	2,170	2,240	2,080	2,210	2,130	2,150	2,190	2,070	2,010	1,970
	Quintile 5	3,780	3,700	3,490	3,750	3,380	3,300	3,330	3,230	3,070	2,950

P.9 Placed 18 year old applicants from Northern Ireland by POLAR4 quintile: 8 days after A level results day

Placed 18 year old applicants: change relative to 2018 cycle totals

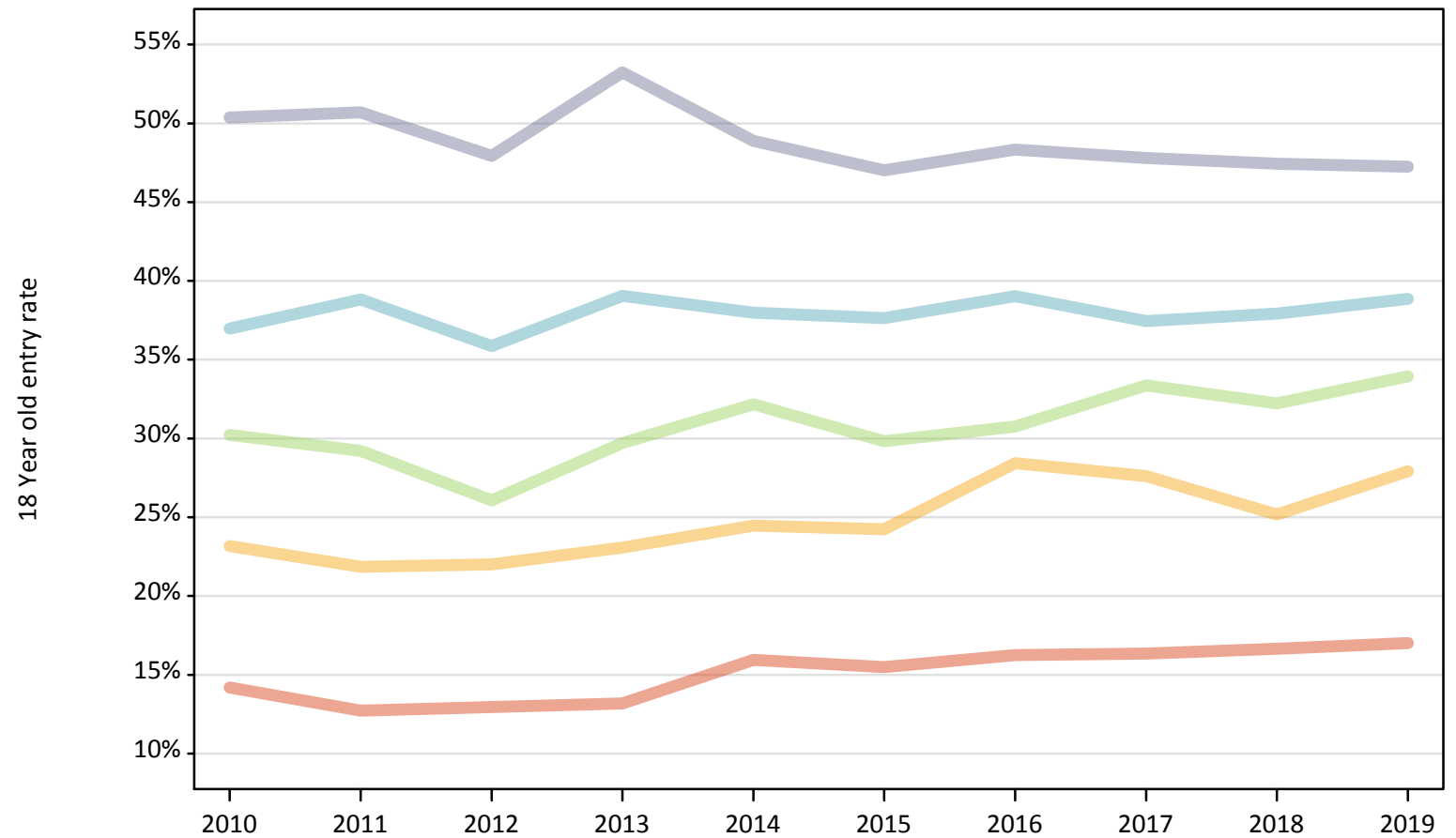
Applicant Status	POLAR4	2010	2011	2012	2013	2014	2015	2016	2017	2018	2019
Placed	Quintile 1	-10%	-21%	-19%	-19%	-3%	-3%	1%	2%	0%	-1%
	Quintile 2	0%	-8%	-6%	-4%	1%	3%	19%	15%	0%	7%
	Quintile 3	-2%	-6%	-15%	-5%	3%	-2%	0%	8%	0%	2%
	Quintile 4	8%	12%	4%	10%	6%	7%	9%	3%	0%	-2%
	Quintile 5	23%	20%	14%	22%	10%	8%	8%	5%	0%	-4%

Note: The percentage change is not recorded in the above table for groups with fewer than 10 placed applicants in that cycle or in the 2018 cycle.

P.10 Placed 18 year old applicants from Northern Ireland by POLAR4 quintile: 8 days after A level results day

Placed 18 year old applicants: entry rate

- Quintile 1
- Quintile 2
- Quintile 3
- Quintile 4
- Quintile 5



P.11 Placed 18 year old applicants from Northern Ireland by POLAR4 quintile: 8 days after A level results day

Placed 18 year old applicants: entry rate

Applicant Status	POLAR4	2010	2011	2012	2013	2014	2015	2016	2017	2018	2019
Placed	Quintile 1	14.2%	12.7%	12.9%	13.2%	15.9%	15.5%	16.2%	16.4%	16.7%	17.0%
	Quintile 2	23.2%	21.8%	22.0%	23.1%	24.5%	24.2%	28.4%	27.6%	25.2%	27.9%
	Quintile 3	30.2%	29.2%	26.1%	29.7%	32.2%	29.8%	30.7%	33.4%	32.2%	33.9%
	Quintile 4	37.0%	38.8%	35.9%	39.0%	38.0%	37.6%	39.0%	37.5%	37.9%	38.9%
	Quintile 5	50.4%	50.7%	47.9%	53.2%	48.9%	47.0%	48.3%	47.8%	47.4%	47.3%

P.12 Placed 18 year old applicants from Northern Ireland by POLAR4 quintile: 8 days after A level results day

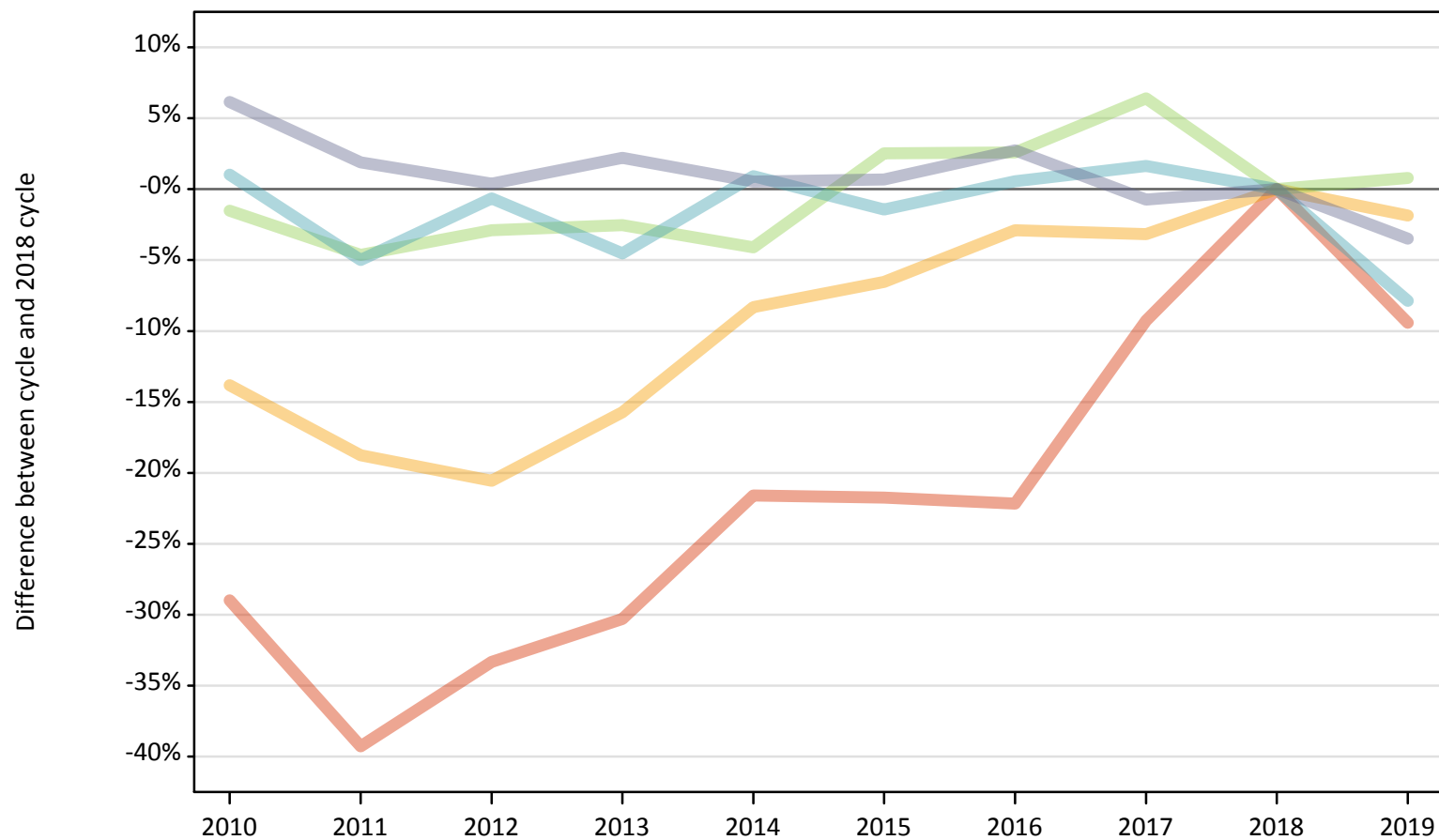
Placed 18 year old applicants: entry rate (indexed to 100 = Quintile 1)

Applicant Status	POLAR4	2010	2011	2012	2013	2014	2015	2016	2017	2018	2019
Placed	Quintile 1	100	100	100	100	100	100	100	100	100	100
	Quintile 2	163	172	170	175	153	156	175	169	151	164
	Quintile 3	213	230	202	225	202	193	189	204	193	199
	Quintile 4	260	305	277	296	238	243	240	229	228	228
	Quintile 5	355	398	371	404	307	303	298	292	285	278

P.13 Placed 18 year old applicants from Scotland by POLAR4 quintile: 8 days after A level results day

Placed 18 year old applicants: change relative to 2018 cycle totals

- Quintile 1
- Quintile 2
- Quintile 3
- Quintile 4
- Quintile 5



Note: The percentage change is not plotted in the above chart for groups with fewer than 30 placed applicants in any one cycle.

P.14 Placed 18 year old applicants from Scotland by POLAR4 quintile: 8 days after A level results day

Applicant Status	POLAR4	2010	2011	2012	2013	2014	2015	2016	2017	2018	2019
Placed	Quintile 1	490	420	460	480	540	540	540	630	690	630
	Quintile 2	1,250	1,180	1,160	1,230	1,330	1,360	1,410	1,410	1,460	1,430
	Quintile 3	2,210	2,140	2,180	2,190	2,150	2,300	2,300	2,390	2,250	2,260
	Quintile 4	3,390	3,190	3,330	3,200	3,380	3,310	3,370	3,410	3,350	3,090
	Quintile 5	7,230	6,940	6,840	6,960	6,850	6,860	7,000	6,760	6,810	6,570

P.15 Placed 18 year old applicants from Scotland by POLAR4 quintile: 8 days after A level results day

Placed 18 year old applicants: change relative to 2018 cycle totals

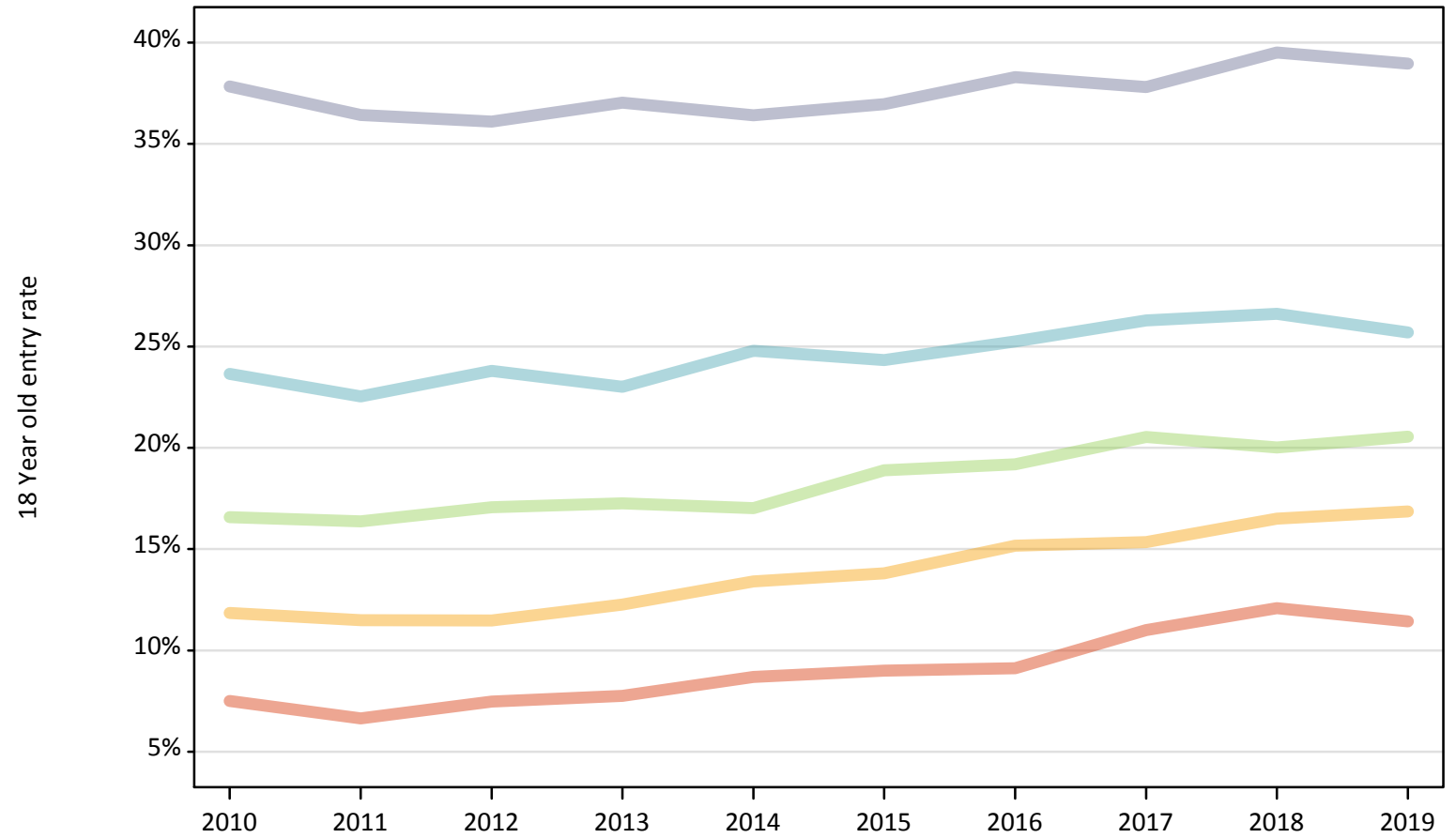
Applicant Status	POLAR4	2010	2011	2012	2013	2014	2015	2016	2017	2018	2019
Placed	Quintile 1	-29%	-39%	-33%	-30%	-22%	-22%	-22%	-9%	0%	-9%
	Quintile 2	-14%	-19%	-21%	-16%	-8%	-7%	-3%	-3%	0%	-2%
	Quintile 3	-2%	-5%	-3%	-3%	-4%	3%	3%	6%	0%	1%
	Quintile 4	1%	-5%	-1%	-5%	1%	-1%	1%	2%	0%	-8%
	Quintile 5	6%	2%	0%	2%	1%	1%	3%	-1%	0%	-3%

Note: The percentage change is not recorded in the above table for groups with fewer than 10 placed applicants in that cycle or in the 2018 cycle.

P.16 Placed 18 year old applicants from Scotland by POLAR4 quintile: 8 days after A level results day

Placed 18 year old applicants: entry rate

- Quintile 1
- Quintile 2
- Quintile 3
- Quintile 4
- Quintile 5



P.17 Placed 18 year old applicants from Scotland by POLAR4 quintile: 8 days after A level results day

Placed 18 year old applicants: entry rate

Applicant Status	POLAR4	2010	2011	2012	2013	2014	2015	2016	2017	2018	2019
Placed	Quintile 1	7.5%	6.6%	7.5%	7.8%	8.7%	9.0%	9.1%	11.0%	12.1%	11.4%
	Quintile 2	11.9%	11.5%	11.5%	12.3%	13.4%	13.8%	15.2%	15.4%	16.5%	16.9%
	Quintile 3	16.6%	16.4%	17.1%	17.3%	17.0%	18.9%	19.2%	20.5%	20.0%	20.5%
	Quintile 4	23.7%	22.5%	23.8%	23.0%	24.8%	24.3%	25.2%	26.3%	26.6%	25.7%
	Quintile 5	37.8%	36.4%	36.1%	37.0%	36.4%	37.0%	38.3%	37.8%	39.5%	39.0%

P.18 Placed 18 year old applicants from Scotland by POLAR4 quintile: 8 days after A level results day

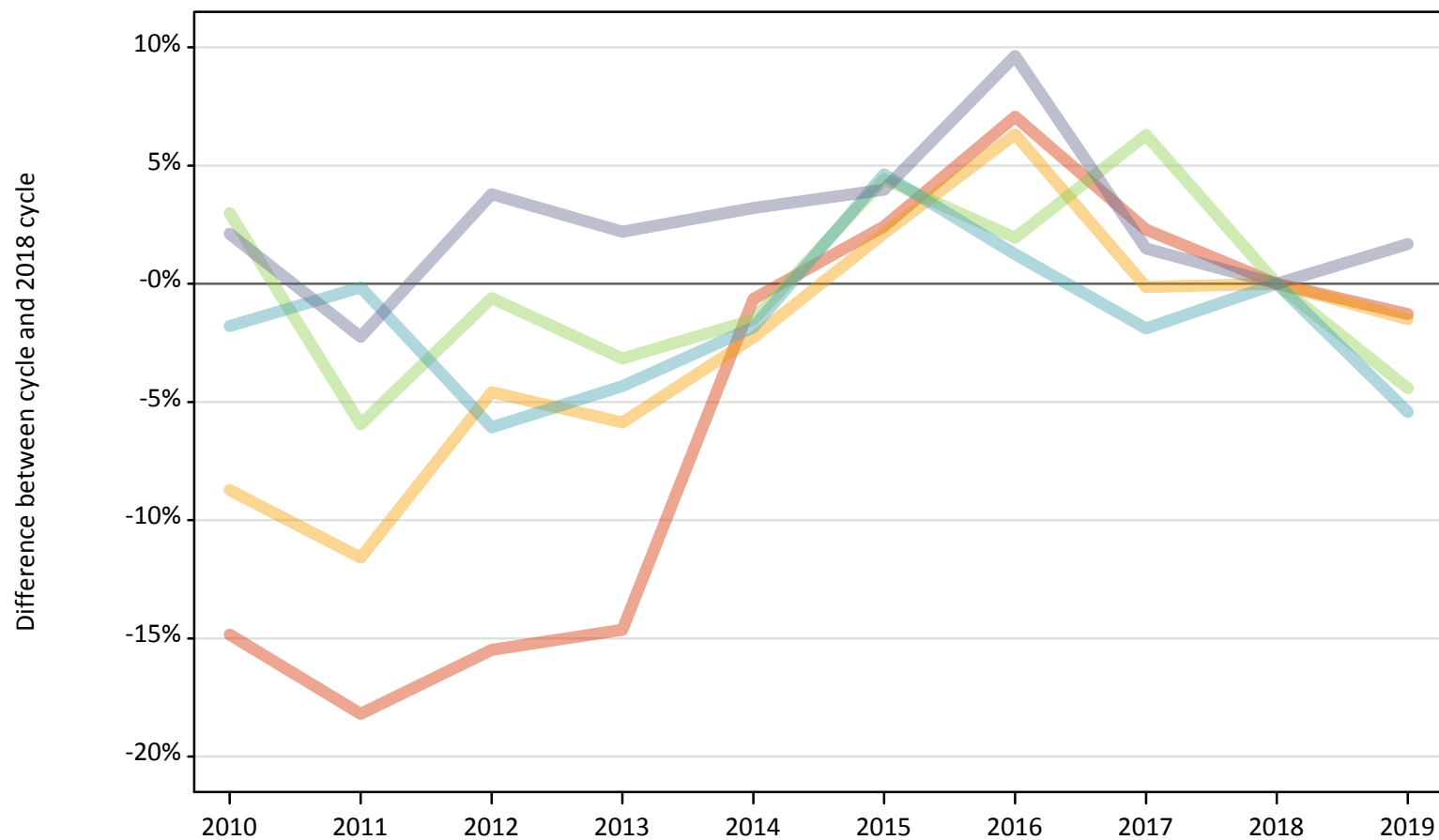
Placed 18 year old applicants: entry rate (indexed to 100 = Quintile 1)

Applicant Status	POLAR4	2010	2011	2012	2013	2014	2015	2016	2017	2018	2019
Placed	Quintile 1	100	100	100	100	100	100	100	100	100	100
	Quintile 2	158	173	154	158	154	153	166	139	137	147
	Quintile 3	221	246	229	223	196	210	210	187	166	180
	Quintile 4	316	339	319	297	285	270	277	239	220	225
	Quintile 5	505	548	483	478	419	411	420	343	327	341

P.19 Placed 18 year old applicants from Wales by POLAR4 quintile: 8 days after A level results day

Placed 18 year old applicants: change relative to 2018 cycle totals

- Quintile 1
- Quintile 2
- Quintile 3
- Quintile 4
- Quintile 5



Note: The percentage change is not plotted in the above chart for groups with fewer than 30 placed applicants in any one cycle.

P.20 Placed 18 year old applicants from Wales by POLAR4 quintile: 8 days after A level results day

Applicant Status	POLAR4	2010	2011	2012	2013	2014	2015	2016	2017	2018	2019
Placed	Quintile 1	1,190	1,150	1,180	1,200	1,390	1,440	1,500	1,430	1,400	1,380
	Quintile 2	2,010	1,950	2,100	2,070	2,150	2,250	2,340	2,200	2,200	2,170
	Quintile 3	2,370	2,170	2,290	2,230	2,270	2,410	2,350	2,450	2,310	2,200
	Quintile 4	1,970	2,010	1,890	1,920	1,970	2,100	2,040	1,970	2,010	1,900
	Quintile 5	2,130	2,040	2,170	2,130	2,150	2,170	2,290	2,120	2,090	2,120

P.21 Placed 18 year old applicants from Wales by POLAR4 quintile: 8 days after A level results day

Placed 18 year old applicants: change relative to 2018 cycle totals

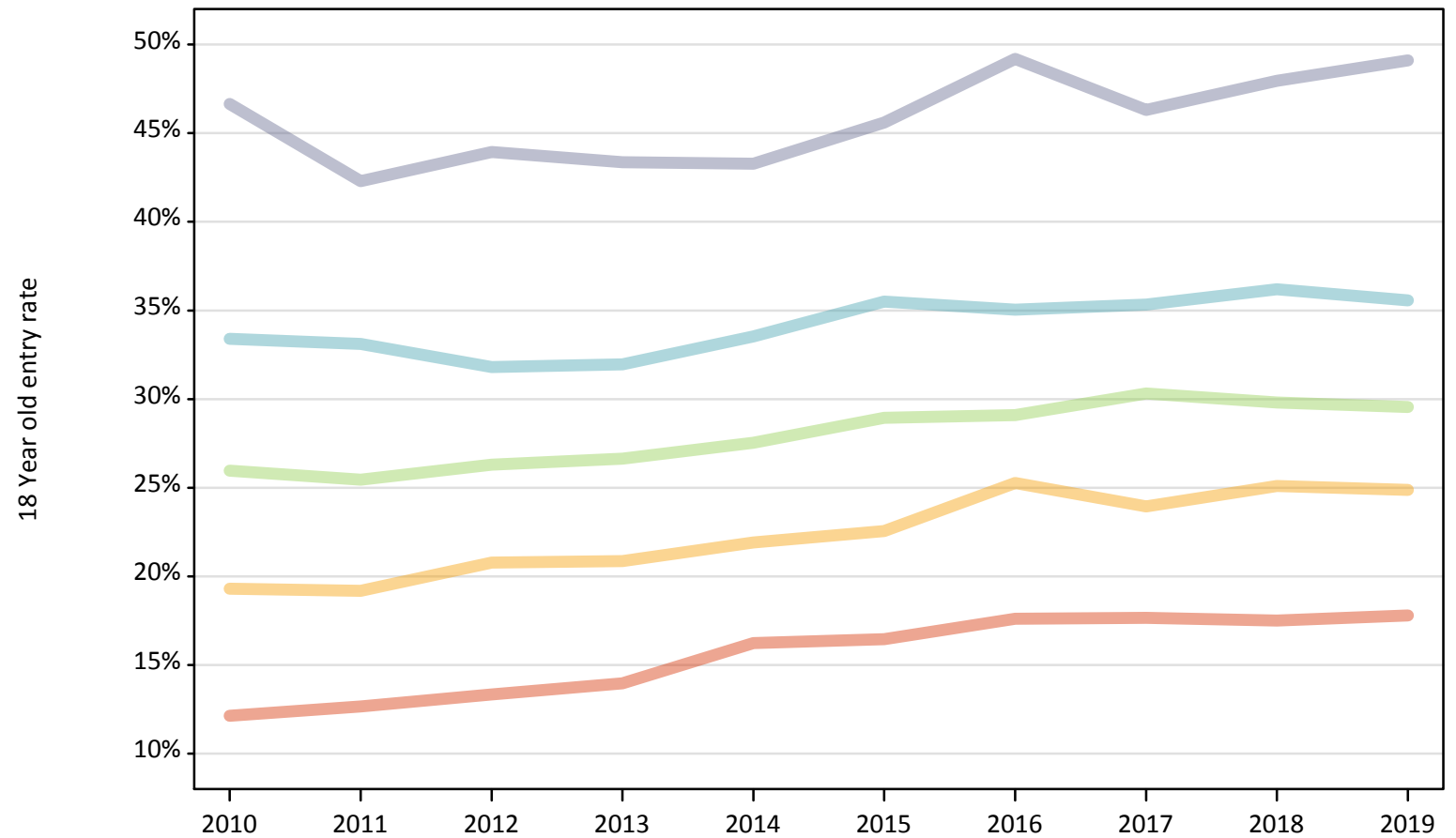
Applicant Status	POLAR4	2010	2011	2012	2013	2014	2015	2016	2017	2018	2019
Placed	Quintile 1	-15%	-18%	-15%	-15%	-1%	2%	7%	2%	0%	-1%
	Quintile 2	-9%	-12%	-5%	-6%	-2%	2%	6%	-0%	0%	-2%
	Quintile 3	3%	-6%	-1%	-3%	-2%	4%	2%	6%	0%	-4%
	Quintile 4	-2%	-0%	-6%	-4%	-2%	5%	1%	-2%	0%	-5%
	Quintile 5	2%	-2%	4%	2%	3%	4%	10%	1%	0%	2%

Note: The percentage change is not recorded in the above table for groups with fewer than 10 placed applicants in that cycle or in the 2018 cycle.

P.22 Placed 18 year old applicants from Wales by POLAR4 quintile: 8 days after A level results day

Placed 18 year old applicants: entry rate

- Quintile 1
- Quintile 2
- Quintile 3
- Quintile 4
- Quintile 5



P.23 Placed 18 year old applicants from Wales by POLAR4 quintile: 8 days after A level results day

Placed 18 year old applicants: entry rate

Applicant Status	POLAR4	2010	2011	2012	2013	2014	2015	2016	2017	2018	2019
Placed	Quintile 1	12.1%	12.7%	13.3%	14.0%	16.2%	16.5%	17.6%	17.7%	17.5%	17.8%
	Quintile 2	19.3%	19.2%	20.8%	20.9%	21.9%	22.6%	25.3%	23.9%	25.1%	24.9%
	Quintile 3	26.0%	25.5%	26.3%	26.6%	27.5%	28.9%	29.1%	30.3%	29.8%	29.5%
	Quintile 4	33.4%	33.1%	31.8%	32.0%	33.5%	35.5%	35.0%	35.3%	36.2%	35.6%
	Quintile 5	46.6%	42.3%	43.9%	43.4%	43.3%	45.6%	49.2%	46.3%	48.0%	49.1%

P.24 Placed 18 year old applicants from Wales by POLAR4 quintile: 8 days after A level results day

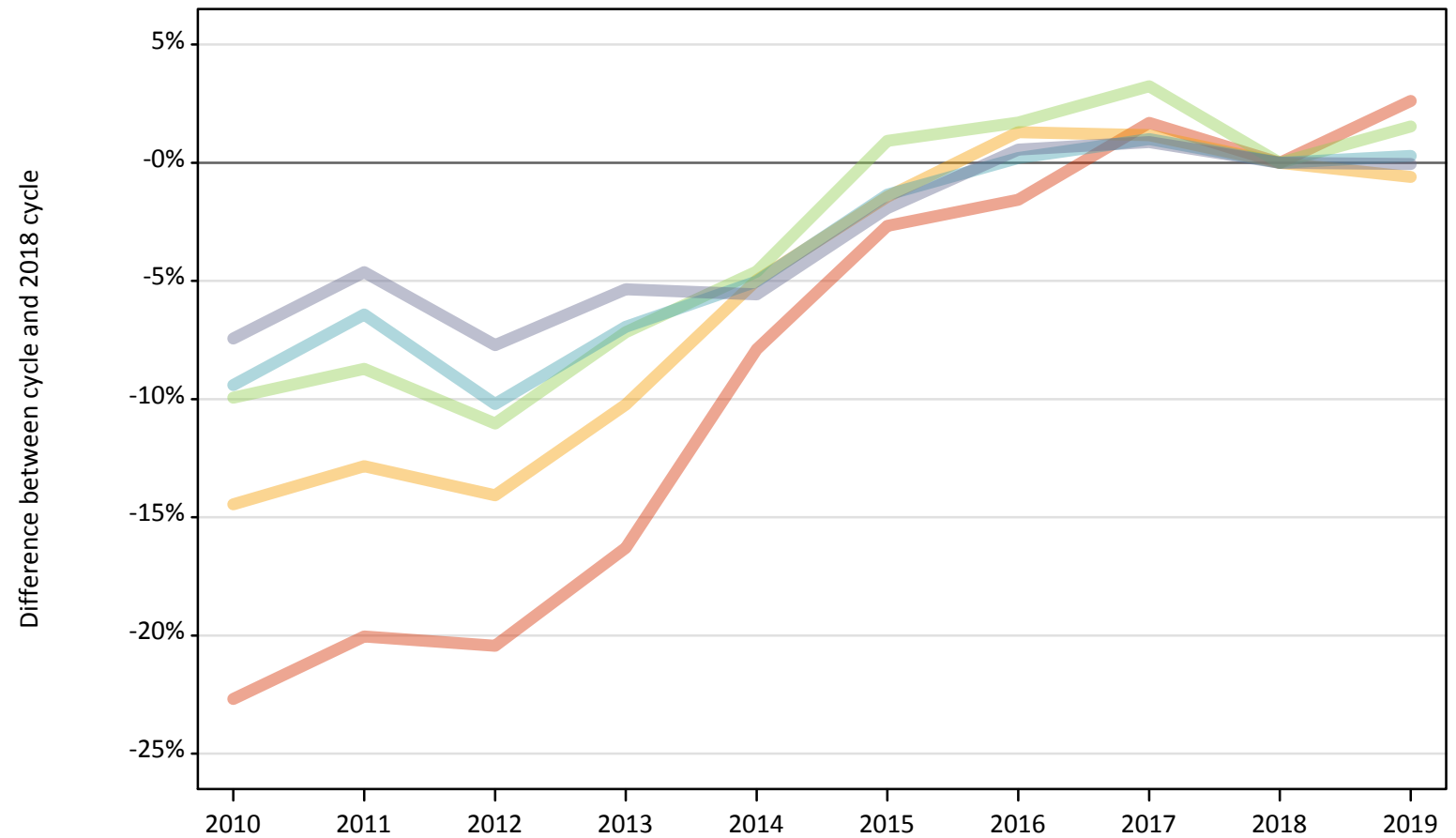
Placed 18 year old applicants: entry rate (indexed to 100 = Quintile 1)

Applicant Status	POLAR4	2010	2011	2012	2013	2014	2015	2016	2017	2018	2019
Placed	Quintile 1	100	100	100	100	100	100	100	100	100	100
	Quintile 2	159	152	156	149	135	137	144	136	143	140
	Quintile 3	214	201	197	191	170	176	165	172	170	166
	Quintile 4	275	262	238	229	207	216	199	200	207	200
	Quintile 5	384	334	329	311	267	277	279	262	274	276

P.25 Placed 18 year old applicants from the UK by POLAR4 quintile: 8 days after A level results day

Placed 18 year old applicants: change relative to 2018 cycle totals

- Quintile 1
- Quintile 2
- Quintile 3
- Quintile 4
- Quintile 5



Note: The percentage change is not plotted in the above chart for groups with fewer than 30 placed applicants in any one cycle.

P.26 Placed 18 year old applicants from the UK by POLAR4 quintile: 8 days after A level results day

Applicant Status	POLAR4	2010	2011	2012	2013	2014	2015	2016	2017	2018	2019
Placed	Quintile 1	19,040	19,690	19,590	20,610	22,680	23,970	24,240	25,040	24,620	25,270
	Quintile 2	29,700	30,260	29,830	31,160	32,990	34,210	35,160	35,120	34,710	34,510
	Quintile 3	38,670	39,200	38,210	39,870	40,970	43,340	43,680	44,330	42,950	43,610
	Quintile 4	48,490	50,090	48,060	49,810	50,840	52,810	53,630	54,060	53,530	53,680
	Quintile 5	72,100	74,280	71,880	73,720	73,550	76,390	78,320	78,570	77,890	77,850

P.27 Placed 18 year old applicants from the UK by POLAR4 quintile: 8 days after A level results day

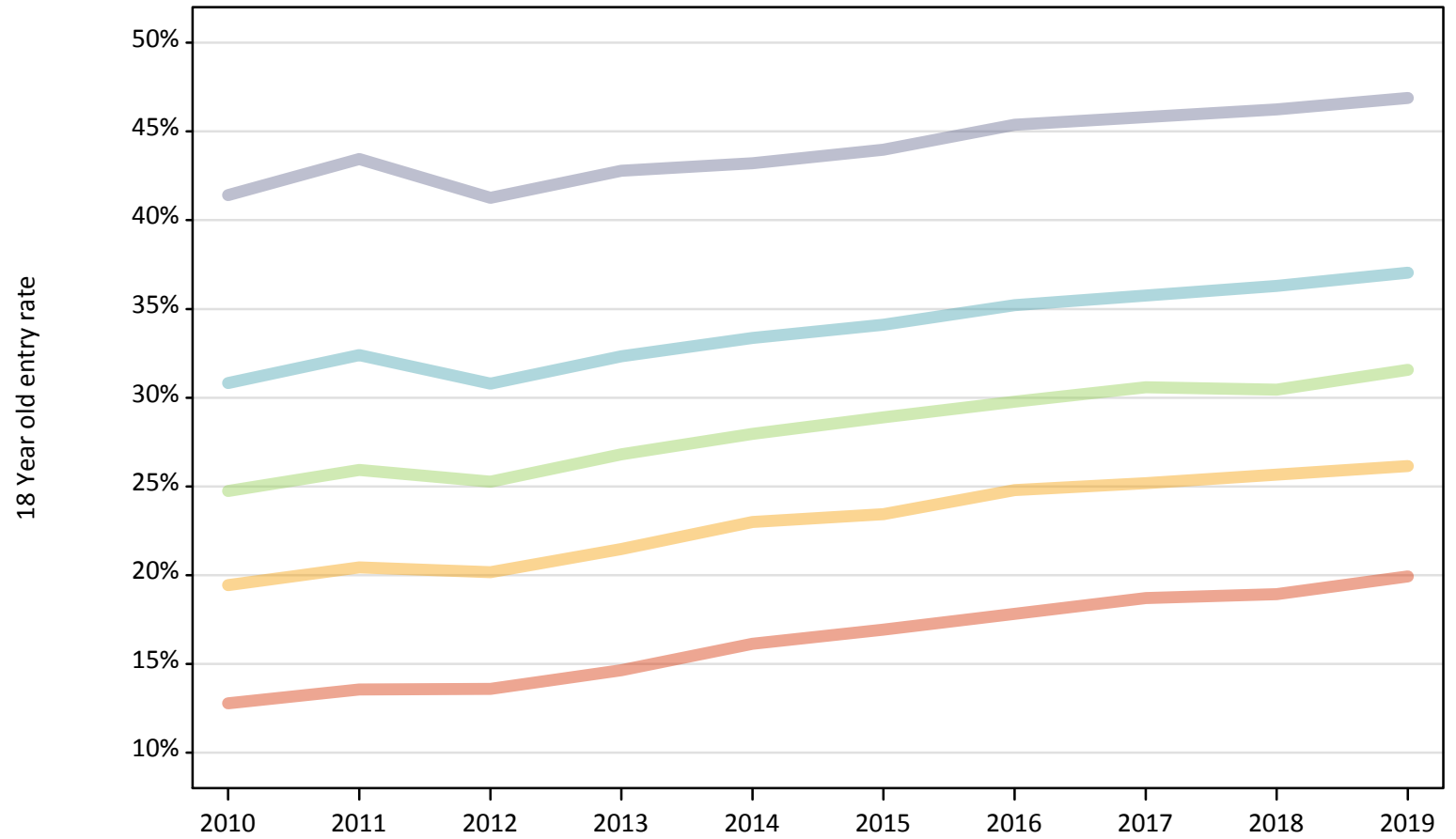
Placed 18 year old applicants: change relative to 2018 cycle totals

Applicant Status	POLAR4	2010	2011	2012	2013	2014	2015	2016	2017	2018	2019
Placed	Quintile 1	-23%	-20%	-20%	-16%	-8%	-3%	-2%	2%	0%	3%
	Quintile 2	-14%	-13%	-14%	-10%	-5%	-1%	1%	1%	0%	-1%
	Quintile 3	-10%	-9%	-11%	-7%	-5%	1%	2%	3%	0%	2%
	Quintile 4	-9%	-6%	-10%	-7%	-5%	-1%	0%	1%	0%	0%
	Quintile 5	-7%	-5%	-8%	-5%	-6%	-2%	1%	1%	0%	-0%

Note: The percentage change is not recorded in the above table for groups with fewer than 10 placed applicants in that cycle or in the 2018 cycle.

P.28 Placed 18 year old applicants from the UK by POLAR4 quintile: 8 days after A level results day
Placed 18 year old applicants: entry rate

- Quintile 1
- Quintile 2
- Quintile 3
- Quintile 4
- Quintile 5



P.29 Placed 18 year old applicants from the UK by POLAR4 quintile: 8 days after A level results day

Placed 18 year old applicants: entry rate

Applicant Status	POLAR4	2010	2011	2012	2013	2014	2015	2016	2017	2018	2019
Placed	Quintile 1	12.8%	13.6%	13.6%	14.6%	16.1%	16.9%	17.8%	18.7%	18.9%	19.9%
	Quintile 2	19.4%	20.4%	20.2%	21.5%	23.0%	23.4%	24.8%	25.2%	25.7%	26.1%
	Quintile 3	24.7%	25.9%	25.3%	26.8%	28.0%	28.9%	29.8%	30.6%	30.4%	31.6%
	Quintile 4	30.8%	32.4%	30.8%	32.3%	33.4%	34.1%	35.2%	35.8%	36.3%	37.0%
	Quintile 5	41.4%	43.4%	41.3%	42.8%	43.2%	44.0%	45.4%	45.8%	46.2%	46.9%

P.30 Placed 18 year old applicants from the UK by POLAR4 quintile: 8 days after A level results day

Placed 18 year old applicants: entry rate (indexed to 100 = Quintile 1)

Applicant Status	POLAR4	2010	2011	2012	2013	2014	2015	2016	2017	2018	2019
Placed	Quintile 1	100	100	100	100	100	100	100	100	100	100
	Quintile 2	152	151	148	147	142	138	139	135	135	131
	Quintile 3	194	191	186	183	173	171	167	163	161	158
	Quintile 4	241	239	227	221	207	202	198	191	192	186
	Quintile 5	324	320	304	292	268	260	255	245	244	235