

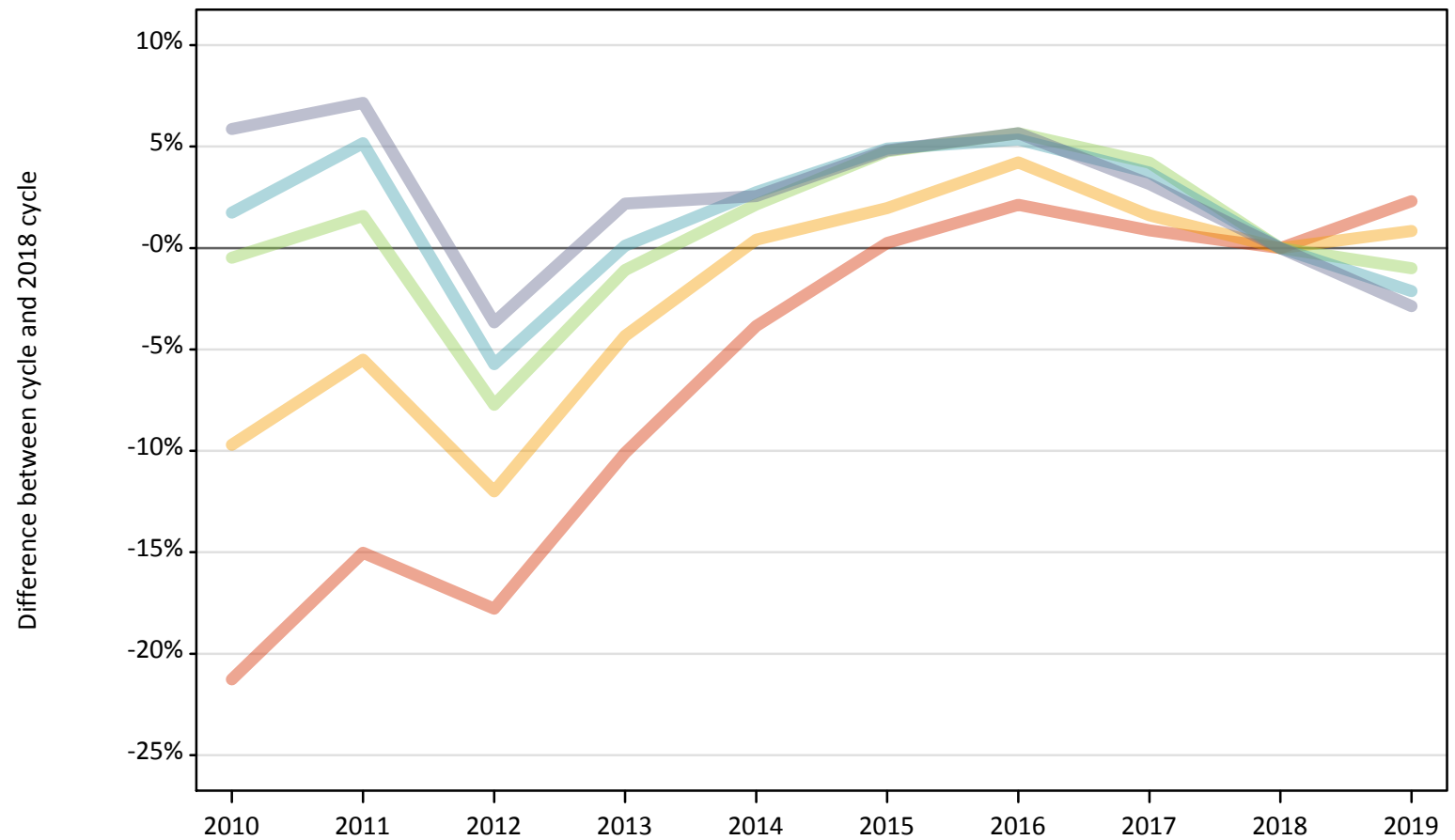
Daily Clearing Analysis: IMD2015

Analysis at 00:05 on Friday 23 August 2019 (8 days after A level results day)

J.1 Placed applicants from England by IMD2015 quintile: 8 days after A level results day

Placed applicants: change relative to 2018 cycle totals

- Quintile 1
- Quintile 2
- Quintile 3
- Quintile 4
- Quintile 5



Note: The percentage change is not plotted in the above chart for groups with fewer than 30 placed applicants in any one cycle.

J.2 Placed applicants from England by IMD2015 quintile: 8 days after A level results day

Applicant Status IMD2015		2010	2011	2012	2013	2014	2015	2016	2017	2018	2019
Placed	Quintile 1	50,070	54,040	52,280	57,170	61,150	63,750	64,950	64,140	63,590	65,060
	Quintile 2	56,250	58,870	54,820	59,600	62,550	63,530	64,930	63,300	62,300	62,820
	Quintile 3	63,680	65,000	59,040	63,290	65,360	67,040	67,610	66,680	63,990	63,350
	Quintile 4	71,530	73,940	66,270	70,390	72,240	73,750	74,060	72,920	70,300	68,810
	Quintile 5	87,730	88,810	79,840	84,690	85,000	86,870	87,560	85,490	82,870	80,500

J.3 Placed applicants from England by IMD2015 quintile: 8 days after A level results day

Placed applicants: change relative to 2018 cycle totals

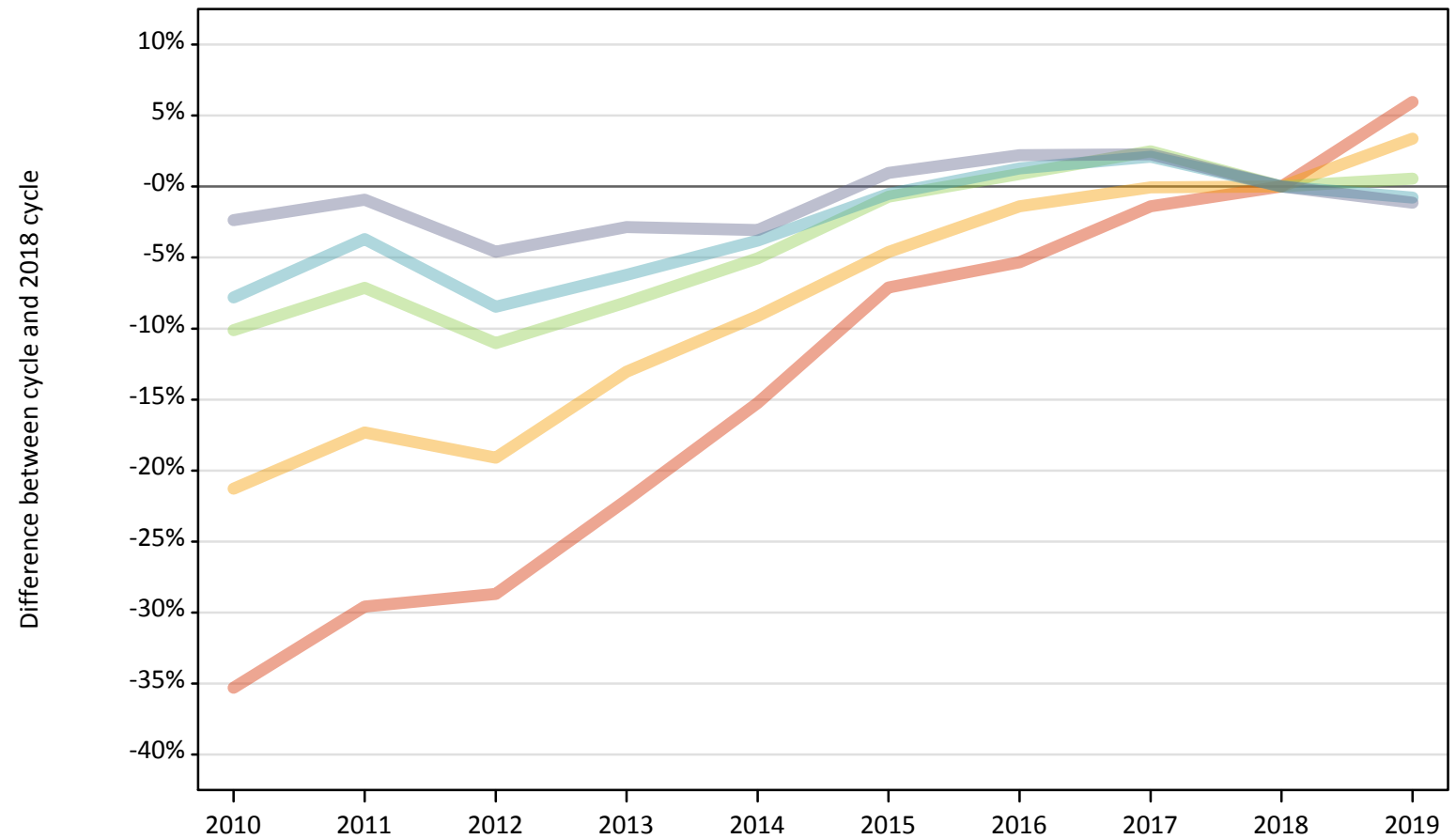
Applicant Status IMD2015		2010	2011	2012	2013	2014	2015	2016	2017	2018	2019
Placed	Quintile 1	-21%	-15%	-18%	-10%	-4%	0%	2%	1%	0%	2%
	Quintile 2	-10%	-5%	-12%	-4%	0%	2%	4%	2%	0%	1%
	Quintile 3	-0%	2%	-8%	-1%	2%	5%	6%	4%	0%	-1%
	Quintile 4	2%	5%	-6%	0%	3%	5%	5%	4%	0%	-2%
	Quintile 5	6%	7%	-4%	2%	3%	5%	6%	3%	0%	-3%

Note: The percentage change is not recorded in the above table for groups with fewer than 10 placed applicants in that cycle or in the 2018 cycle.

J.4 Placed 18 year old applicants from England by IMD2015 quintile: 8 days after A level results day

Placed 18 year old applicants: change relative to 2018 cycle totals

- Quintile 1
- Quintile 2
- Quintile 3
- Quintile 4
- Quintile 5



Note: The percentage change is not plotted in the above chart for groups with fewer than 30 placed applicants in any one cycle.

J.5 Placed 18 year old applicants from England by IMD2015 quintile: 8 days after A level results day

Applicant Status IMD2015		2010	2011	2012	2013	2014	2015	2016	2017	2018	2019
Placed	Quintile 1	19,880	21,640	21,910	23,940	26,040	28,540	29,090	30,300	30,720	32,550
	Quintile 2	25,840	27,140	26,560	28,550	29,840	31,310	32,370	32,810	32,830	33,930
	Quintile 3	33,490	34,600	33,140	34,220	35,370	36,990	37,580	38,180	37,250	37,460
	Quintile 4	40,810	42,630	40,520	41,520	42,580	44,040	44,830	45,200	44,270	43,920
	Quintile 5	55,110	55,920	53,860	54,830	54,720	56,980	57,690	57,720	56,440	55,790

J.6 Placed 18 year old applicants from England by IMD2015 quintile: 8 days after A level results day

Placed 18 year old applicants: change relative to 2018 cycle totals

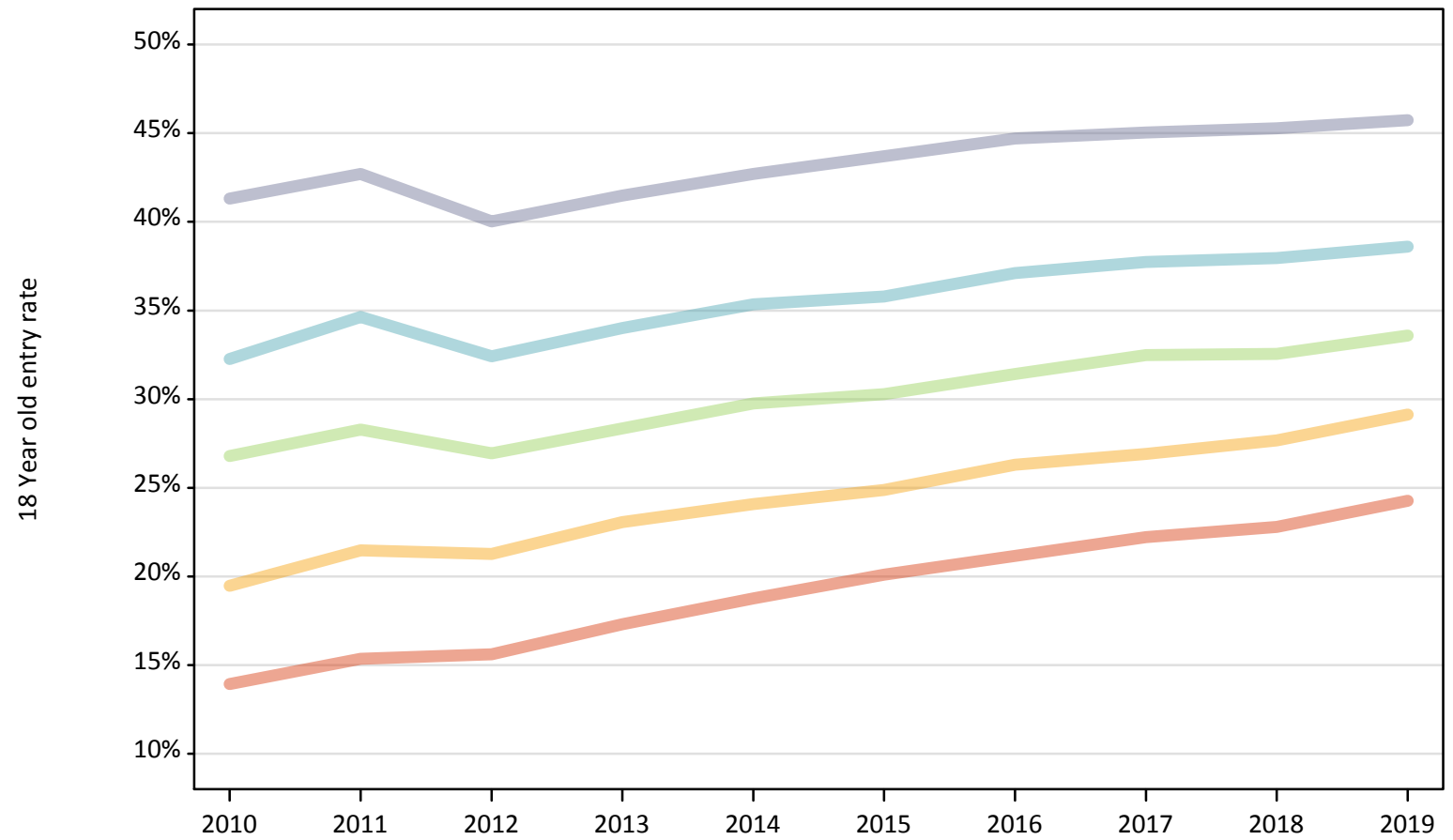
Applicant Status IMD2015		2010	2011	2012	2013	2014	2015	2016	2017	2018	2019
Placed	Quintile 1	-35%	-30%	-29%	-22%	-15%	-7%	-5%	-1%	0%	6%
	Quintile 2	-21%	-17%	-19%	-13%	-9%	-5%	-1%	-0%	0%	3%
	Quintile 3	-10%	-7%	-11%	-8%	-5%	-1%	1%	2%	0%	1%
	Quintile 4	-8%	-4%	-8%	-6%	-4%	-1%	1%	2%	0%	-1%
	Quintile 5	-2%	-1%	-5%	-3%	-3%	1%	2%	2%	0%	-1%

Note: The percentage change is not recorded in the above table for groups with fewer than 10 placed applicants in that cycle or in the 2018 cycle.

J.7 Placed 18 year old applicants from England by IMD2015 quintile: 8 days after A level results day

Placed 18 year old applicants: entry rate

- Quintile 1
- Quintile 2
- Quintile 3
- Quintile 4
- Quintile 5



J.8 Placed 18 year old applicants from England by IMD2015 quintile: 8 days after A level results day

Placed 18 year old applicants: entry rate

Applicant Status	IMD2015	2010	2011	2012	2013	2014	2015	2016	2017	2018	2019
Placed	Quintile 1	13.9%	15.4%	15.6%	17.3%	18.8%	20.1%	21.2%	22.2%	22.8%	24.3%
	Quintile 2	19.5%	21.5%	21.3%	23.1%	24.1%	24.9%	26.3%	26.9%	27.7%	29.1%
	Quintile 3	26.8%	28.3%	26.9%	28.3%	29.8%	30.3%	31.4%	32.5%	32.6%	33.6%
	Quintile 4	32.3%	34.6%	32.4%	34.0%	35.3%	35.8%	37.1%	37.7%	38.0%	38.6%
	Quintile 5	41.3%	42.7%	40.0%	41.5%	42.7%	43.7%	44.7%	45.0%	45.3%	45.7%

J.9 Placed 18 year old applicants from England by IMD2015 quintile: 8 days after A level results day

Placed 18 year old applicants: entry rate (indexed to 100 = Quintile 1)

Applicant Status	IMD2015	2010	2011	2012	2013	2014	2015	2016	2017	2018	2019
Placed	Quintile 1	100	100	100	100	100	100	100	100	100	100
	Quintile 2	140	140	136	133	128	124	124	121	121	120
	Quintile 3	192	184	173	164	159	151	148	146	143	138
	Quintile 4	232	225	208	197	188	178	175	170	167	159
	Quintile 5	297	278	256	240	228	217	211	203	199	188