

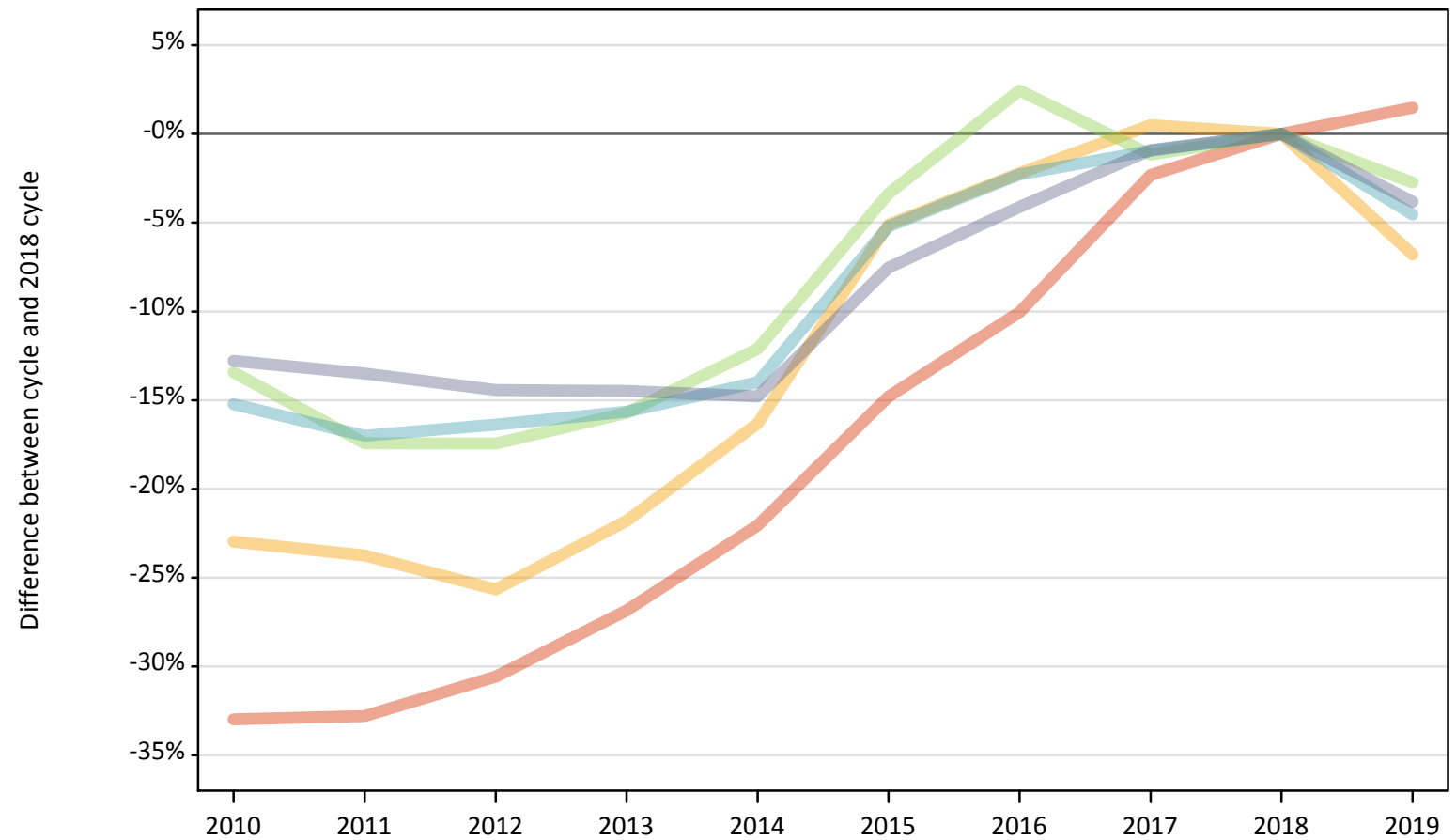
# Daily Clearing Analysis: SIMD2012 2016

Analysis at 00:05 on Friday 23 August 2019 (8 days after A level results day)

J.1 Placed applicants from Scotland by SIMD2012/2016 quintile: 8 days after A level results day

Placed applicants: change relative to 2018 cycle totals

- Quintile 1
- Quintile 2
- Quintile 3
- Quintile 4
- Quintile 5



Note: The percentage change is not plotted in the above chart for groups with fewer than 30 placed applicants in any one cycle.

### J.2 Placed applicants from Scotland by SIMD2012/2016 quintile: 8 days after A level results day

Applicant Status	SIMD2012/2016	2010	2011	2012	2013	2014	2015	2016	2017	2018	2019
Placed	Quintile 1	3,360	3,370	3,480	3,670	3,910	4,280	4,510	4,900	5,020	5,090
	Quintile 2	4,100	4,060	3,960	4,160	4,450	5,050	5,200	5,350	5,320	4,960
	Quintile 3	5,390	5,140	5,140	5,250	5,470	6,020	6,380	6,150	6,230	6,060
	Quintile 4	6,520	6,390	6,430	6,490	6,620	7,290	7,520	7,620	7,690	7,350
	Quintile 5	8,570	8,500	8,410	8,410	8,380	9,090	9,430	9,740	9,830	9,460

### J.3 Placed applicants from Scotland by SIMD2012/2016 quintile: 8 days after A level results day

Placed applicants: change relative to 2018 cycle totals

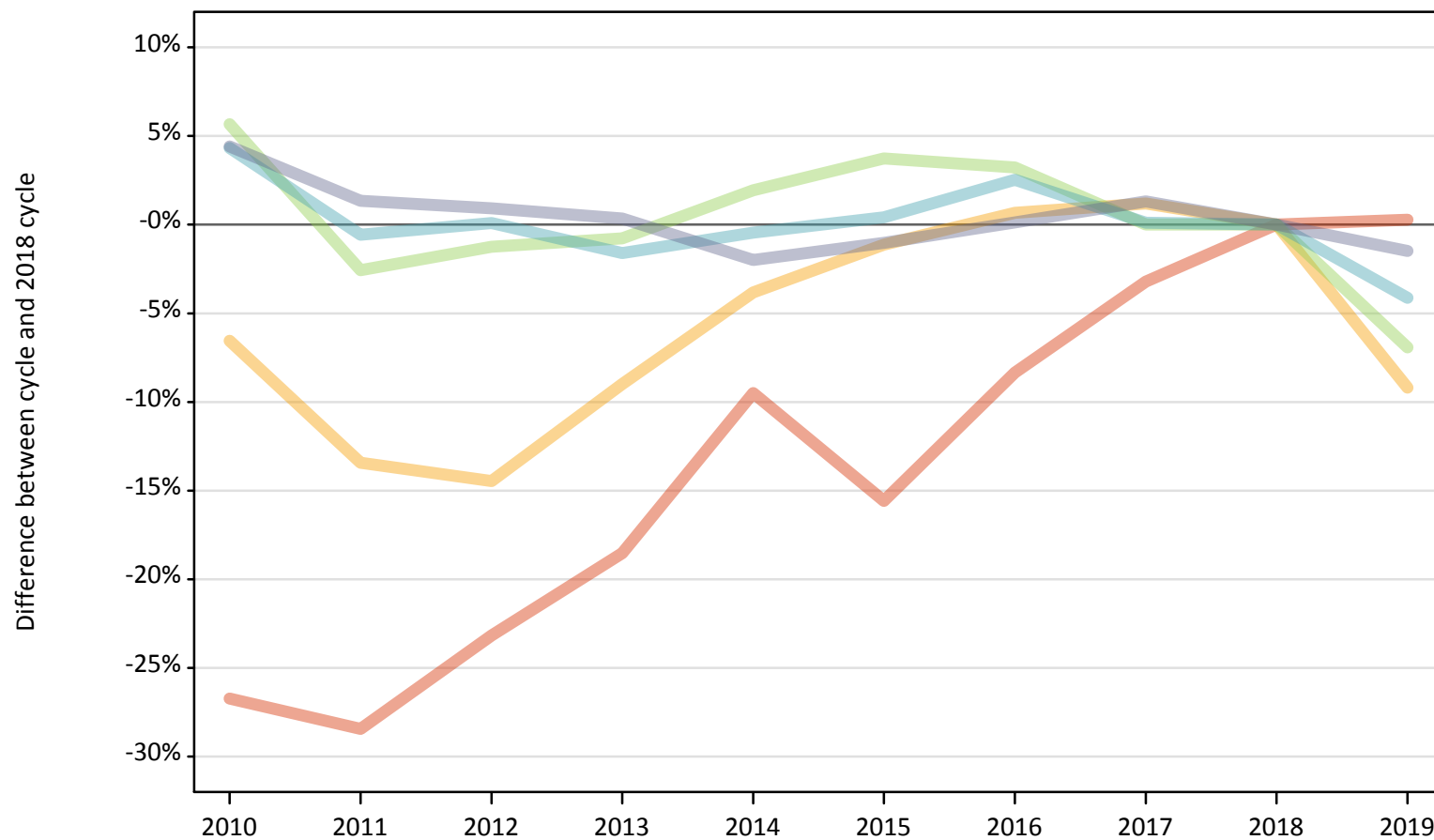
Applicant Status	SIMD2012/2016	2010	2011	2012	2013	2014	2015	2016	2017	2018	2019
Placed	Quintile 1	-33%	-33%	-31%	-27%	-22%	-15%	-10%	-2%	0%	1%
	Quintile 2	-23%	-24%	-26%	-22%	-16%	-5%	-2%	0%	0%	-7%
	Quintile 3	-13%	-17%	-17%	-16%	-12%	-3%	2%	-1%	0%	-3%
	Quintile 4	-15%	-17%	-16%	-16%	-14%	-5%	-2%	-1%	0%	-5%
	Quintile 5	-13%	-13%	-14%	-14%	-15%	-8%	-4%	-1%	0%	-4%

Note: The percentage change is not recorded in the above table for groups with fewer than 10 placed applicants in that cycle or in the 2018 cycle.

### J.4 Placed 18 year old applicants from Scotland by SIMD2012/2016 quintile: 8 days after A level results day

Placed 18 year old applicants: change relative to 2018 cycle totals

- Quintile 1
- Quintile 2
- Quintile 3
- Quintile 4
- Quintile 5



Note: The percentage change is not plotted in the above chart for groups with fewer than 30 placed applicants in any one cycle.

### J.5 Placed 18 year old applicants from Scotland by SIMD2012/2016 quintile: 8 days after A level results day

Applicant Status	SIMD2012/2016	2010	2011	2012	2013	2014	2015	2016	2017	2018	2019
Placed	Quintile 1	1,070	1,050	1,120	1,190	1,320	1,240	1,340	1,420	1,460	1,470
	Quintile 2	1,810	1,680	1,660	1,760	1,860	1,920	1,950	1,960	1,940	1,760
	Quintile 3	2,720	2,510	2,540	2,550	2,620	2,670	2,660	2,570	2,570	2,400
	Quintile 4	3,710	3,540	3,560	3,500	3,540	3,570	3,650	3,560	3,560	3,410
	Quintile 5	5,250	5,090	5,070	5,040	4,930	4,970	5,030	5,090	5,030	4,950

### J.6 Placed 18 year old applicants from Scotland by SIMD2012/2016 quintile: 8 days after A level results day

Placed 18 year old applicants: change relative to 2018 cycle totals

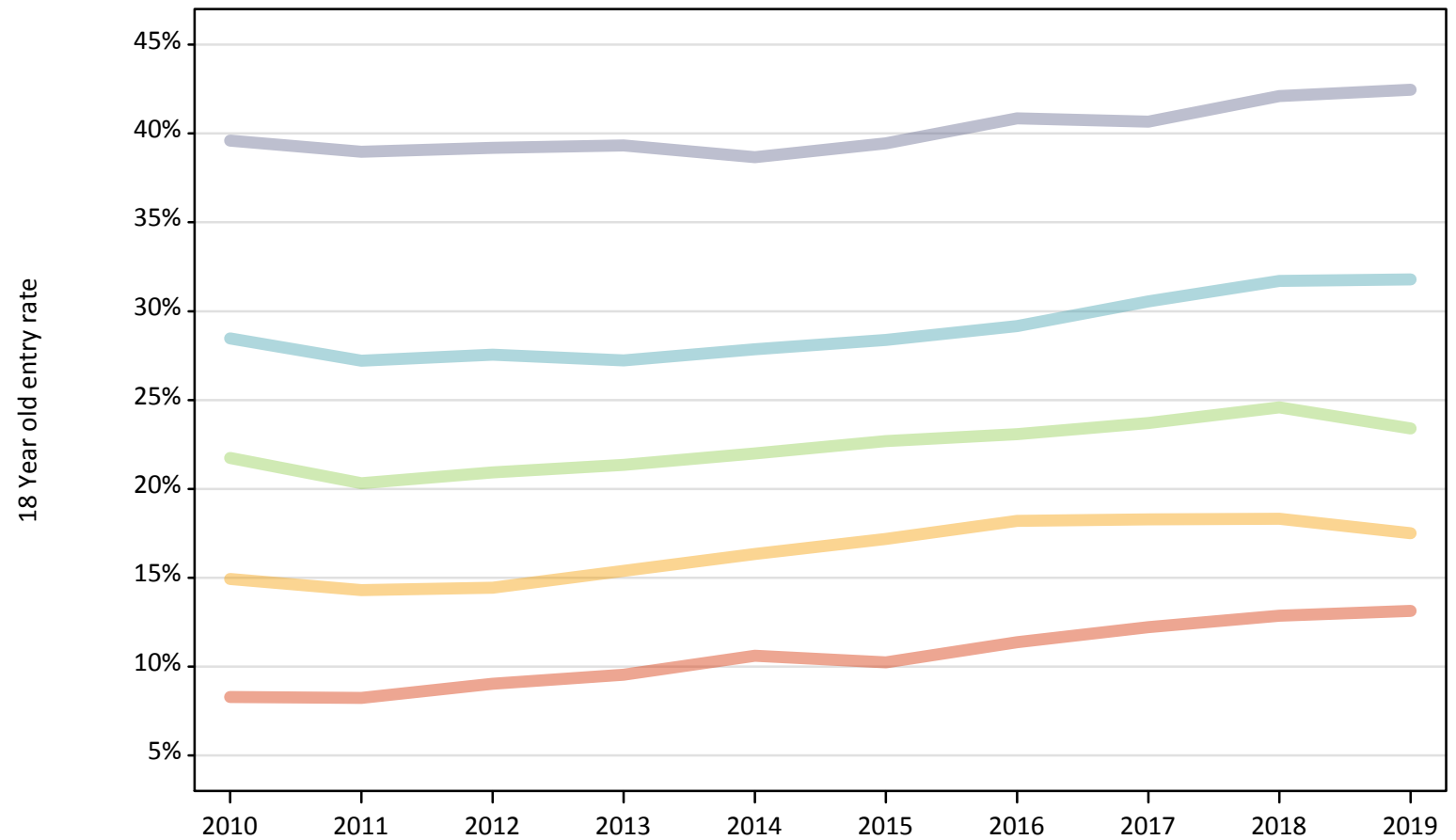
Applicant Status	SIMD2012/2016	2010	2011	2012	2013	2014	2015	2016	2017	2018	2019
Placed	Quintile 1	-27%	-28%	-23%	-19%	-10%	-16%	-8%	-3%	0%	0%
	Quintile 2	-7%	-13%	-14%	-9%	-4%	-1%	1%	1%	0%	-9%
	Quintile 3	6%	-3%	-1%	-1%	2%	4%	3%	0%	0%	-7%
	Quintile 4	4%	-1%	0%	-2%	-0%	0%	3%	0%	0%	-4%
	Quintile 5	4%	1%	1%	0%	-2%	-1%	0%	1%	0%	-1%

Note: The percentage change is not recorded in the above table for groups with fewer than 10 placed applicants in that cycle or in the 2018 cycle.

### J.7 Placed 18 year old applicants from Scotland by SIMD2012/2016 quintile: 8 days after A level results day

Placed 18 year old applicants: entry rate

- Quintile 1
- Quintile 2
- Quintile 3
- Quintile 4
- Quintile 5



### J.8 Placed 18 year old applicants from Scotland by SIMD2012/2016 quintile: 8 days after A level results day

Placed 18 year old applicants: entry rate

Applicant Status	SIMD2012/2016	2010	2011	2012	2013	2014	2015	2016	2017	2018	2019
Placed	Quintile 1	8.3%	8.2%	9.0%	9.5%	10.6%	10.2%	11.4%	12.2%	12.9%	13.1%
	Quintile 2	14.9%	14.3%	14.4%	15.4%	16.3%	17.2%	18.2%	18.3%	18.3%	17.5%
	Quintile 3	21.7%	20.3%	20.9%	21.4%	22.0%	22.7%	23.1%	23.7%	24.6%	23.4%
	Quintile 4	28.5%	27.2%	27.5%	27.2%	27.9%	28.4%	29.2%	30.6%	31.7%	31.8%
	Quintile 5	39.6%	39.0%	39.2%	39.3%	38.7%	39.4%	40.8%	40.7%	42.1%	42.5%

### J.9 Placed 18 year old applicants from Scotland by SIMD2012/2016 quintile: 8 days after A level results day

Placed 18 year old applicants: entry rate (indexed to 100 = Quintile 1)

Applicant Status	SIMD2012/2016	2010	2011	2012	2013	2014	2015	2016	2017	2018	2019
Placed	Quintile 1	100	100	100	100	100	100	100	100	100	100
	Quintile 2	180	174	160	161	154	168	160	150	142	133
	Quintile 3	263	247	232	224	207	222	203	194	191	178
	Quintile 4	344	330	305	285	263	277	256	250	247	242
	Quintile 5	478	473	434	412	365	385	359	333	327	323