

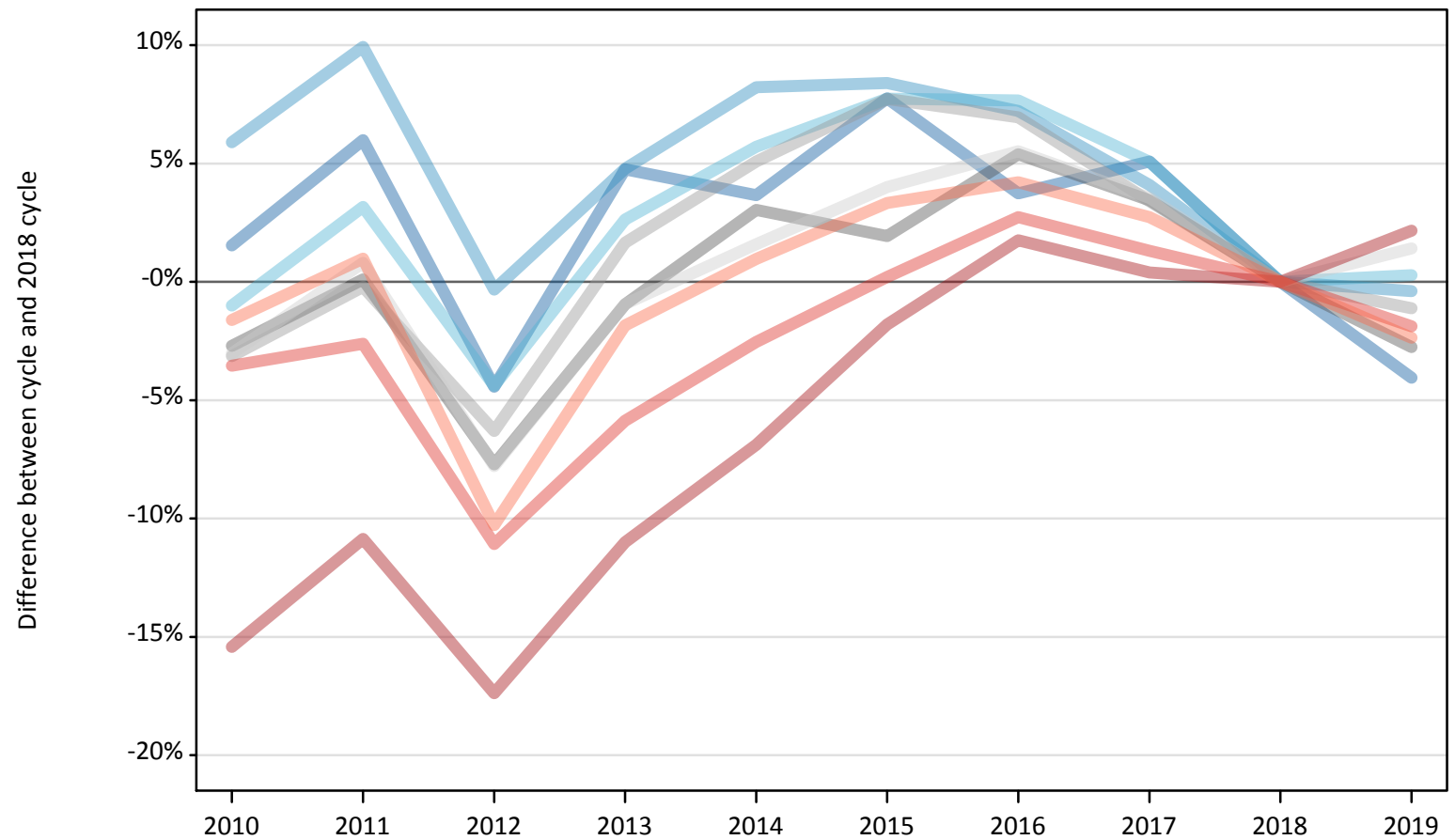
# Daily Clearing Analysis: Region

Analysis at 00:05 on Friday 23 August 2019 (8 days after A level results day)

## R.1 Placed applicants by region of domicile: 8 days after A level results day

Placed applicants: change relative to 2018 cycle totals

- North East
- North West
- Yorkshire and The Humber
- East Midlands
- West Midlands
- East of England
- London
- South East
- South West



Note: The percentage change is not plotted in the above chart for groups with fewer than 30 placed applicants in any one cycle.

## R.2 Placed applicants by region of domicile: 8 days after A level results day

Applicant Status	Domicile	2010	2011	2012	2013	2014	2015	2016	2017	2018	2019
Placed	North East	14,660	15,300	13,800	15,130	14,970	15,560	14,980	15,180	14,440	13,850
	North West	46,100	47,850	43,390	45,610	47,110	47,180	46,670	45,310	43,530	43,360
	Yorkshire and The Humber	30,170	31,440	29,140	31,280	32,210	32,830	32,810	32,020	30,480	30,560
	East Midlands	25,830	26,580	24,510	26,300	27,360	27,060	27,980	27,470	26,550	25,820
	West Midlands	34,260	35,300	33,140	35,950	37,170	38,100	37,830	36,580	35,370	34,970
	East of England	34,390	35,750	32,700	35,130	36,030	36,880	37,420	36,720	35,460	35,960
	London	58,040	61,180	56,700	61,080	63,900	67,390	69,830	68,900	68,630	70,110
	South East	55,510	56,040	51,170	54,170	56,080	57,660	59,110	58,300	57,540	56,460
	South West	31,290	32,110	28,530	31,220	32,110	32,860	33,140	32,670	31,800	31,050
	(England total)	330,250	341,540	313,060	335,850	346,940	355,540	359,780	353,140	343,800	342,150
	Scotland	28,130	27,610	27,580	28,090	28,910	31,830	33,140	33,850	34,200	33,110
	Northern Ireland	13,110	13,300	12,350	13,700	13,750	13,470	14,320	13,820	13,270	13,150
	Wales	17,070	16,870	17,520	17,700	18,440	18,780	18,990	18,540	18,100	17,820
	UK	388,560	399,320	370,520	395,340	408,040	419,620	426,220	419,350	409,370	406,230

### R.3 Placed applicants by region of domicile: 8 days after A level results day

Placed applicants: change relative to 2018 cycle totals

Applicant Status	Domicile	2010	2011	2012	2013	2014	2015	2016	2017	2018	2019
Placed	North East	2%	6%	-4%	5%	4%	8%	4%	5%	0%	-4%
	North West	6%	10%	-0%	5%	8%	8%	7%	4%	0%	-0%
	Yorkshire and The Humber	-1%	3%	-4%	3%	6%	8%	8%	5%	0%	0%
	East Midlands	-3%	0%	-8%	-1%	3%	2%	5%	3%	0%	-3%
	West Midlands	-3%	-0%	-6%	2%	5%	8%	7%	3%	0%	-1%
	East of England	-3%	1%	-8%	-1%	2%	4%	6%	4%	0%	1%
	London	-15%	-11%	-17%	-11%	-7%	-2%	2%	0%	0%	2%
	South East	-4%	-3%	-11%	-6%	-3%	0%	3%	1%	0%	-2%
	South West	-2%	1%	-10%	-2%	1%	3%	4%	3%	0%	-2%
	(England total)	-4%	-1%	-9%	-2%	1%	3%	5%	3%	0%	-0%
	Scotland	-18%	-19%	-19%	-18%	-15%	-7%	-3%	-1%	0%	-3%
	Northern Ireland	-1%	0%	-7%	3%	4%	2%	8%	4%	0%	-1%
	Wales	-6%	-7%	-3%	-2%	2%	4%	5%	2%	0%	-2%
	UK	-5%	-2%	-9%	-3%	-0%	3%	4%	2%	0%	-1%

Note: The percentage change is not recorded in the above table for groups with fewer than 10 placed applicants in that cycle or in the 2018 cycle.

#### R.4 Placed applicants by region of domicile: 8 days after A level results day

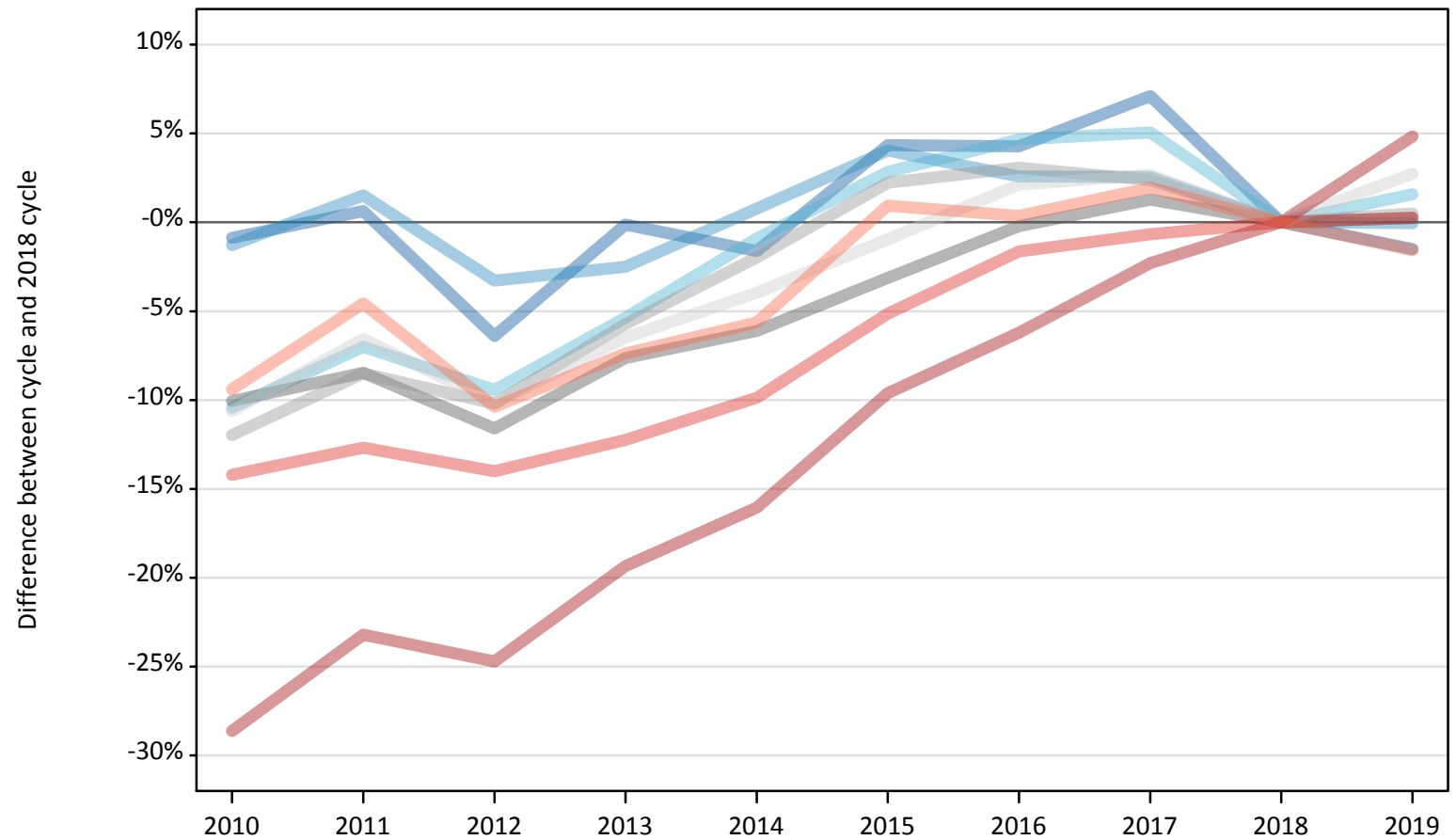
Placed applicants: absolute change relative to 2018 cycle totals

Applicant Status	Domicile	2010	2011	2012	2013	2014	2015	2016	2017	2018	2019
Placed	North East	220	860	-640	690	530	1,120	540	740	0	-590
	North West	2,570	4,320	-140	2,080	3,580	3,660	3,140	1,780	0	-170
	Yorkshire and The Humber	-310	970	-1,340	800	1,740	2,360	2,340	1,550	0	90
	East Midlands	-720	30	-2,050	-250	810	510	1,430	920	0	-730
	West Midlands	-1,110	-70	-2,230	580	1,800	2,730	2,460	1,210	0	-400
	East of England	-1,070	290	-2,760	-330	560	1,420	1,960	1,260	0	500
	London	-10,590	-7,450	-11,930	-7,550	-4,730	-1,240	1,210	270	0	1,480
	South East	-2,040	-1,510	-6,370	-3,380	-1,460	120	1,570	750	0	-1,080
	South West	-510	310	-3,270	-590	310	1,060	1,340	870	0	-750
	(England total)	-13,550	-2,260	-30,740	-7,950	3,140	11,740	15,980	9,340	0	-1,650
	Scotland	-6,080	-6,600	-6,620	-6,120	-5,300	-2,380	-1,070	-360	0	-1,100
	Northern Ireland	-160	30	-910	440	480	200	1,050	560	0	-120
	Wales	-1,030	-1,230	-580	-400	340	680	890	440	0	-290
	UK	-20,820	-10,060	-38,860	-14,030	-1,340	10,240	16,850	9,970	0	-3,150

## R.5 Placed 18 year old applicants by region of domicile: 8 days after A level results day

Placed 18 year old applicants: change relative to 2018 cycle totals

- North East
- North West
- Yorkshire and The Humber
- East Midlands
- West Midlands
- East of England
- London
- South East
- South West



Note: The percentage change is not plotted in the above chart for groups with fewer than 30 placed applicants in any one cycle.

## R.6 Placed 18 year old applicants by region of domicile: 8 days after A level results day

Applicant Status	Domicile	2010	2011	2012	2013	2014	2015	2016	2017	2018	2019
Placed	North East	7,940	8,060	7,500	8,000	7,880	8,360	8,360	8,580	8,010	7,890
	North West	25,530	26,250	25,010	25,210	26,050	26,900	26,520	26,520	25,860	25,850
	Yorkshire and The Humber	16,230	16,850	16,420	17,150	17,960	18,640	18,970	19,040	18,120	18,410
	East Midlands	14,380	14,630	14,130	14,760	15,000	15,480	15,950	16,190	15,980	16,020
	West Midlands	18,080	18,790	18,440	19,360	20,130	21,000	21,170	21,030	20,540	20,640
	East of England	19,860	20,770	19,960	20,780	21,350	22,010	22,700	22,810	22,220	22,830
	London	27,470	29,560	28,970	31,040	32,310	34,780	36,100	37,600	38,490	40,340
	South East	30,430	30,970	30,500	31,120	31,970	33,640	34,880	35,230	35,460	35,560
	South West	15,540	16,360	15,370	15,880	16,180	17,310	17,210	17,480	17,150	16,880
	(England total)	175,450	182,240	176,290	183,310	188,830	198,120	201,850	204,470	201,830	204,410
	Scotland	14,600	13,910	14,000	14,080	14,290	14,400	14,650	14,620	14,600	14,050
	Northern Ireland	8,670	8,470	7,990	8,540	8,340	8,240	8,470	8,340	7,890	7,810
	Wales	9,700	9,320	9,650	9,570	9,950	10,380	10,520	10,190	10,030	9,820
	UK	208,420	213,930	207,930	215,510	221,410	231,140	235,480	237,620	234,350	236,090

## R.7 Placed 18 year old applicants by region of domicile: 8 days after A level results day

Placed 18 year old applicants: change relative to 2018 cycle totals

Applicant Status	Domicile	2010	2011	2012	2013	2014	2015	2016	2017	2018	2019
Placed	North East	-1%	1%	-6%	-0%	-2%	4%	4%	7%	0%	-1%
	North West	-1%	2%	-3%	-3%	1%	4%	3%	3%	0%	-0%
	Yorkshire and The Humber	-10%	-7%	-9%	-5%	-1%	3%	5%	5%	0%	2%
	East Midlands	-10%	-8%	-12%	-8%	-6%	-3%	-0%	1%	0%	0%
	West Midlands	-12%	-8%	-10%	-6%	-2%	2%	3%	2%	0%	0%
	East of England	-11%	-7%	-10%	-6%	-4%	-1%	2%	3%	0%	3%
	London	-29%	-23%	-25%	-19%	-16%	-10%	-6%	-2%	0%	5%
	South East	-14%	-13%	-14%	-12%	-10%	-5%	-2%	-1%	0%	0%
	South West	-9%	-5%	-10%	-7%	-6%	1%	0%	2%	0%	-2%
	(England total)	-13%	-10%	-13%	-9%	-6%	-2%	0%	1%	0%	1%
	Scotland	0%	-5%	-4%	-4%	-2%	-1%	0%	0%	0%	-4%
	Northern Ireland	10%	7%	1%	8%	6%	4%	7%	6%	0%	-1%
	Wales	-3%	-7%	-4%	-5%	-1%	3%	5%	2%	0%	-2%
	UK	-11%	-9%	-11%	-8%	-6%	-1%	0%	1%	0%	1%

Note: The percentage change is not recorded in the above table for groups with fewer than 10 placed applicants in that cycle or in the 2018 cycle.

## R.8 Placed 18 year old applicants by region of domicile: 8 days after A level results day

Placed 18 year old applicants: absolute change relative to 2018 cycle totals

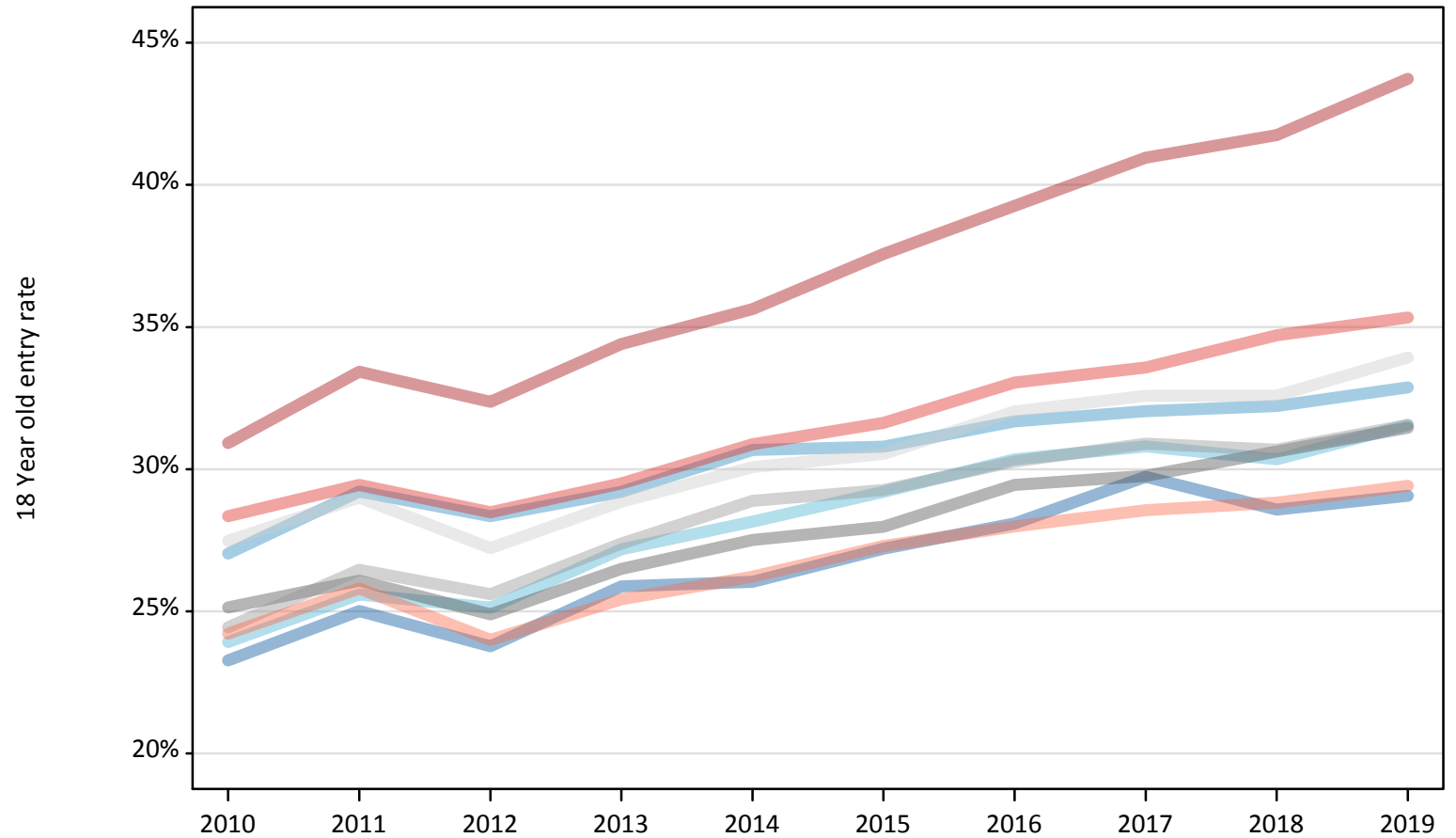
Applicant Status	Domicile	2010	2011	2012	2013	2014	2015	2016	2017	2018	2019
Placed	North East	-70	50	-510	-10	-130	350	340	570	0	-120
	North West	-330	390	-850	-650	200	1,050	670	660	0	-10
	Yorkshire and The Humber	-1,890	-1,270	-1,710	-970	-160	510	850	920	0	290
	East Midlands	-1,610	-1,350	-1,850	-1,220	-980	-500	-30	210	0	40
	West Midlands	-2,460	-1,750	-2,100	-1,180	-410	460	630	490	0	100
	East of England	-2,360	-1,460	-2,260	-1,440	-880	-210	470	590	0	610
	London	-11,020	-8,930	-9,510	-7,440	-6,180	-3,700	-2,390	-890	0	1,860
	South East	-5,040	-4,500	-4,970	-4,340	-3,500	-1,820	-580	-240	0	90
	South West	-1,610	-780	-1,780	-1,270	-970	160	60	330	0	-270
	(England total)	-26,380	-19,600	-25,540	-18,520	-13,000	-3,710	20	2,640	0	2,580
	Scotland	10	-690	-600	-520	-310	-200	50	30	0	-550
	Northern Ireland	780	570	100	650	450	350	580	450	0	-80
	Wales	-340	-710	-390	-460	-80	350	490	160	0	-210
	UK	-25,930	-20,430	-26,430	-18,850	-12,940	-3,220	1,130	3,270	0	1,740



## R.9 Placed 18 year old applicants by region of domicile: 8 days after A level results day

Placed 18 year old applicants: entry rate

- North East
- North West
- Yorkshire and The Humber
- East Midlands
- West Midlands
- East of England
- London
- South East
- South West



## R.10 Placed 18 year old applicants by region of domicile: 8 days after A level results day

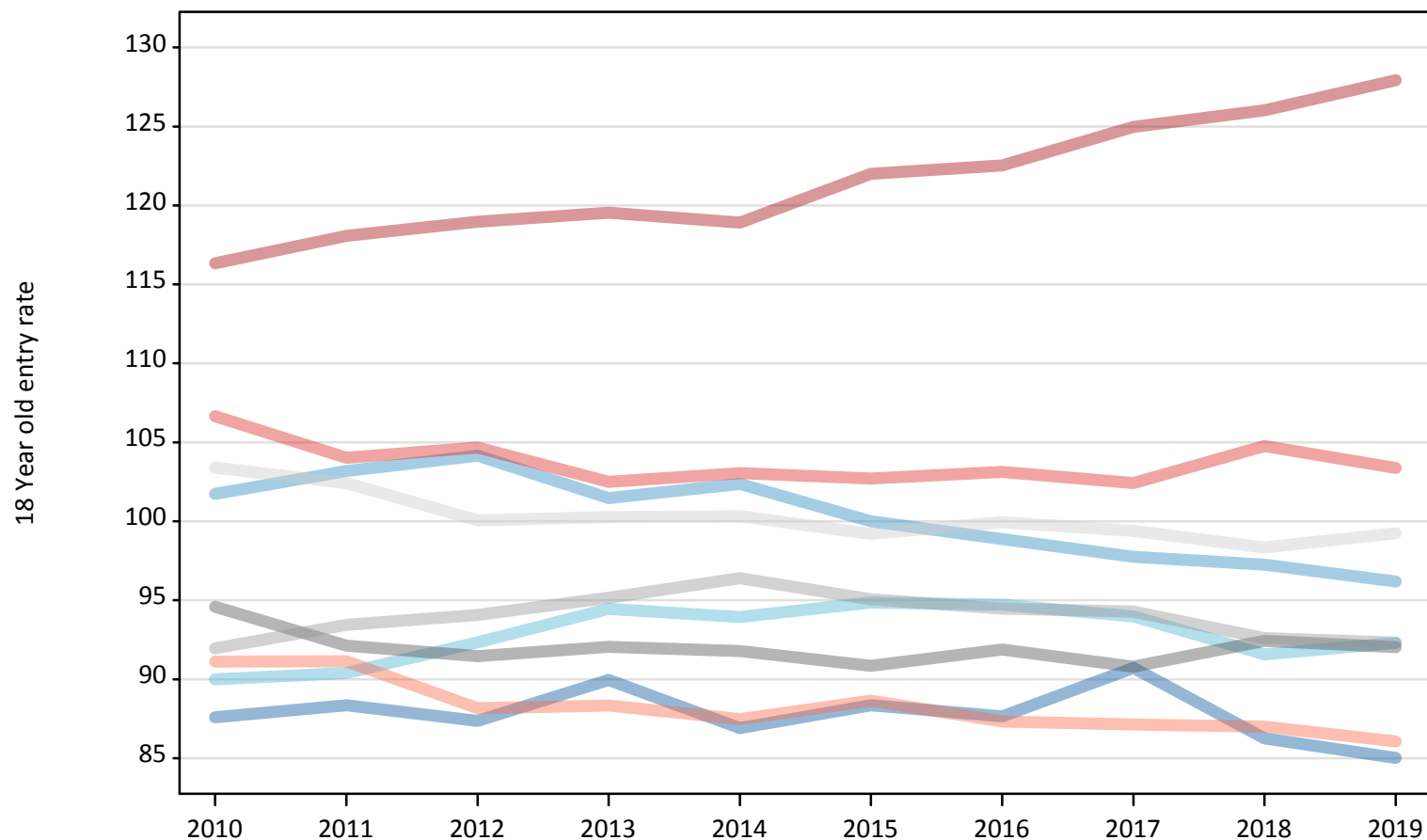
Placed 18 year old applicants: entry rate

Applicant Status	Domicile	2010	2011	2012	2013	2014	2015	2016	2017	2018	2019
Placed	North East	23.3%	25.0%	23.8%	25.9%	26.0%	27.2%	28.1%	29.7%	28.6%	29.1%
	North West	27.0%	29.2%	28.3%	29.2%	30.7%	30.8%	31.7%	32.0%	32.2%	32.9%
	Yorkshire and The Humber	23.9%	25.6%	25.1%	27.2%	28.2%	29.2%	30.3%	30.8%	30.3%	31.6%
	East Midlands	25.1%	26.1%	24.9%	26.5%	27.5%	28.0%	29.4%	29.8%	30.6%	31.5%
	West Midlands	24.4%	26.5%	25.6%	27.4%	28.9%	29.3%	30.3%	30.9%	30.7%	31.6%
	East of England	27.5%	29.0%	27.2%	28.8%	30.1%	30.5%	32.0%	32.6%	32.6%	33.9%
	London	30.9%	33.4%	32.4%	34.4%	35.6%	37.6%	39.3%	41.0%	41.8%	43.7%
	South East	28.3%	29.4%	28.5%	29.5%	30.9%	31.6%	33.0%	33.6%	34.7%	35.3%
	South West	24.2%	25.8%	24.0%	25.4%	26.2%	27.3%	28.0%	28.6%	28.8%	29.4%
	(England total)	26.6%	28.3%	27.2%	28.8%	30.0%	30.8%	32.0%	32.8%	33.1%	34.2%
	Scotland	22.9%	22.1%	22.6%	22.9%	23.3%	23.9%	24.9%	25.5%	26.3%	26.1%
	Northern Ireland	34.0%	33.9%	31.8%	34.8%	34.4%	33.2%	34.6%	34.5%	34.0%	34.9%
	Wales	24.3%	24.2%	25.0%	25.3%	26.5%	27.6%	29.0%	28.7%	29.2%	29.2%
	UK	26.4%	27.8%	26.9%	28.3%	29.4%	30.2%	31.4%	32.1%	32.4%	33.4%

### R.11 Placed 18 year old applicants by region of domicile: 8 days after A level results day

Placed 18 year old applicants: entry rates (indexed to 100 = England)

- North East
- North West
- Yorkshire and The Humber
- East Midlands
- West Midlands
- East of England
- London
- South East
- South West



**R.12 Placed 18 year old applicants by region of domicile: 8 days after A level results day**

Placed 18 year old applicants: entry rate (indexed to 100 = England)

Applicant Status	Domicile	2010	2011	2012	2013	2014	2015	2016	2017	2018	2019
Placed	North East	88	88	87	90	87	88	88	91	86	85
	North West	102	103	104	101	102	100	99	98	97	96
	Yorkshire and The Humber	90	90	92	94	94	95	95	94	92	92
	East Midlands	95	92	91	92	92	91	92	91	92	92
	West Midlands	92	93	94	95	96	95	94	94	93	92
	East of England	103	102	100	100	100	99	100	99	98	99
	London	116	118	119	120	119	122	123	125	126	128
	South East	107	104	105	103	103	103	103	102	105	103
	South West	91	91	88	88	87	89	87	87	87	86
	(England total)	100	100	100	100	100	100	100	100	100	100