

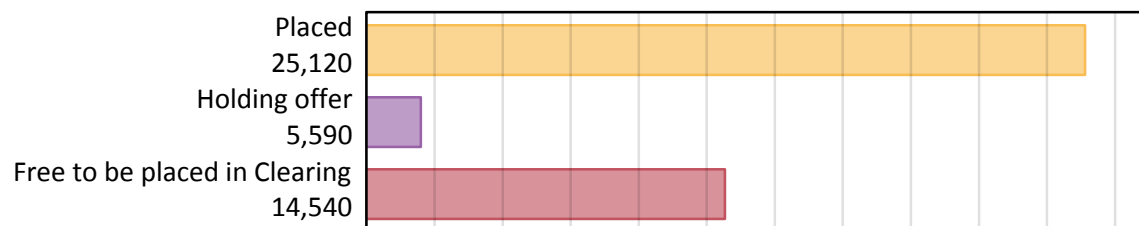
Daily Clearing Analysis: Overview

B7 Nursing analysis at 00:05 on Friday 23 August 2019 (8 days after A level results day)

AB.1 Placed applicants to nursing from all domiciles, 2019 cycle

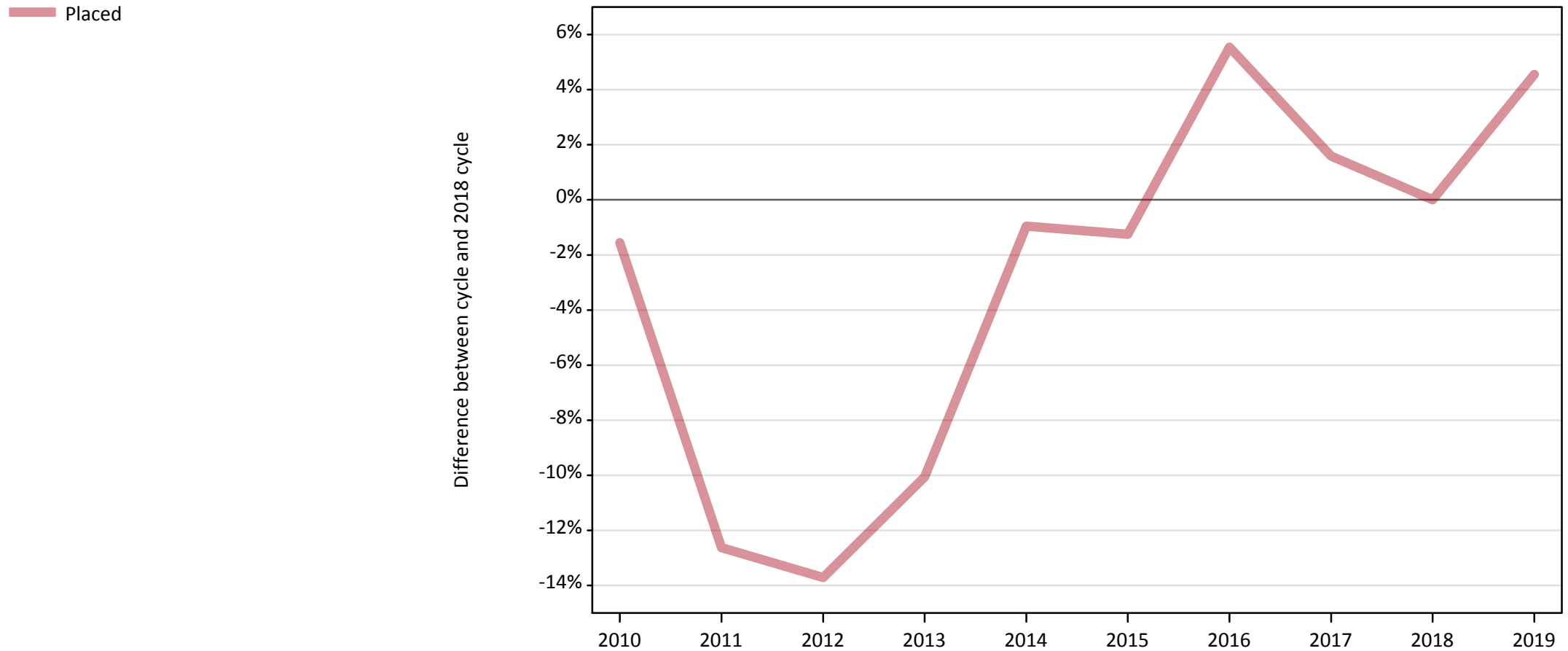
Applicant type	Status	2019
Main scheme	Placed (Clearing)	1,220
	Placed (Adjustment)	10
	Placed (Firm)	21,850
	Placed (Insurance)	520
	Placed (Other)	1,150
	Holding offer	5,590
	Free to be placed in Clearing	14,540
Direct to Clearing	Placed (Direct to Clearing)	370
	Other (Direct to Clearing)	500
All applicants	Placed	25,120

AB.2 Summary of nursing applicants who are placed, holding offers or free to be placed in Clearing (all domiciles)



AB.3 Placed applicants to nursing from all domiciles: 8 days after A level results day

Placed applicants to nursing: difference between cycle and 2018 cycle



Note: The percentage change is not plotted in the above chart for groups with fewer than 30 placed applicants in any one cycle.

AB.4 Placed applicants to nursing from all domiciles: 8 days after A level results day

Placed applicants to nursing: applicants at 8 days after A level results day

Applicant type	Status	2010	2011	2012	2013	2014	2015	2016	2017	2018	2019
All applicants	Placed	23,650	20,990	20,730	21,610	23,800	23,730	25,360	24,410	24,030	25,120

AB.5 Placed applicants to nursing from all domiciles: 8 days after A level results day

Placed applicants to nursing: difference between cycle and 2018 cycle

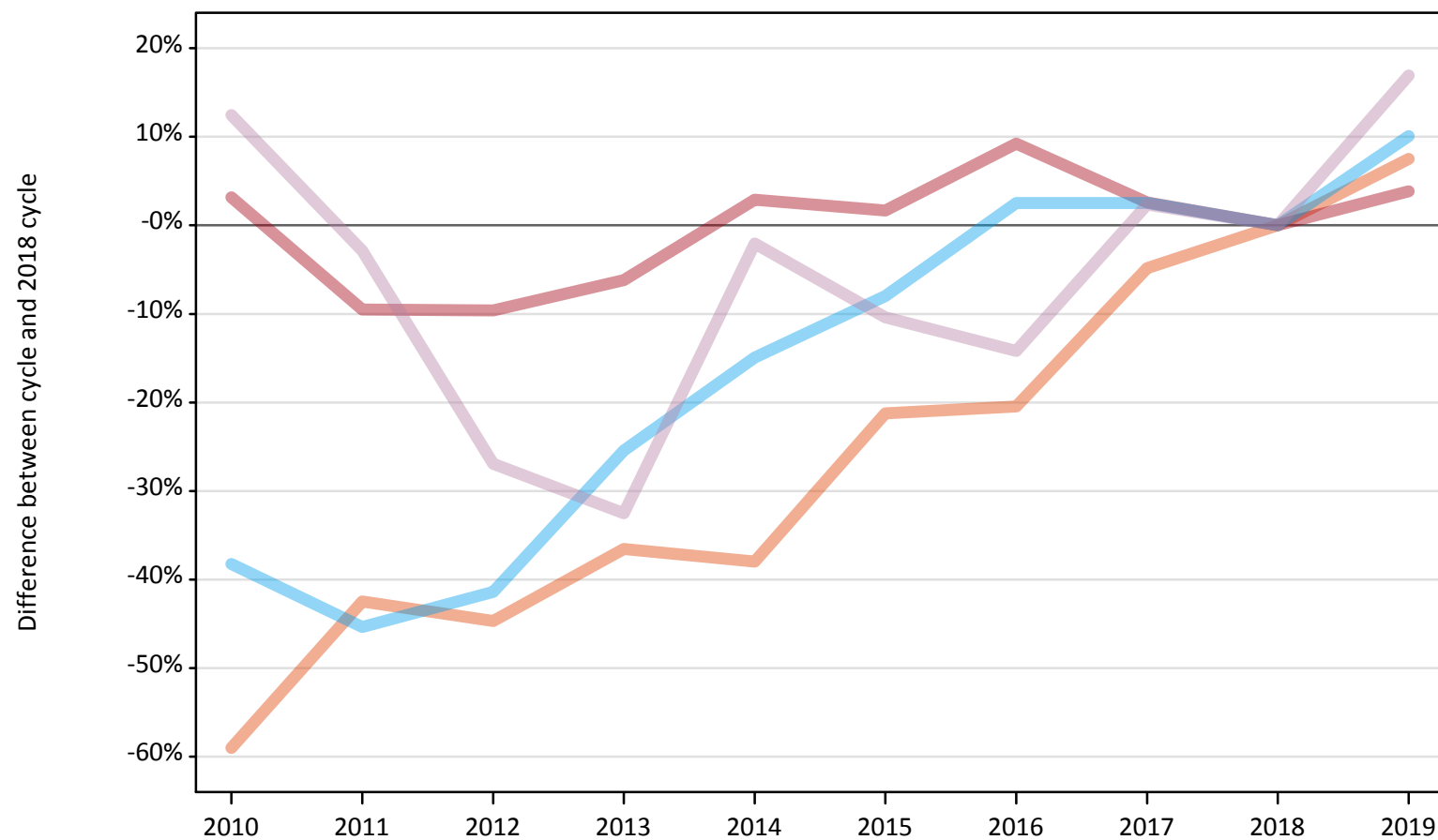
Applicant type	Status	2010	2011	2012	2013	2014	2015	2016	2017	2018	2019
All applicants	Placed	-2%	-13%	-14%	-10%	-1%	-1%	6%	2%	0%	5%

Note: The percentage change is not recorded in the above table for groups with fewer than 10 placed applicants in that cycle or in the 2018 cycle.

AB.6 Placed main scheme applicants to nursing from all domiciles: 8 days after A level results day

All Main scheme placed routes (excluding Adjustment): difference between cycle and 2018 cycle

- Placed (Clearing)
- Placed (Firm)
- Placed (Insurance)
- Placed (Other)



Note: The percentage change is not plotted in the above chart for groups with fewer than 30 placed applicants in any one cycle.

AB.7 Placed main scheme applicants to nursing from all domiciles: 8 days after A level results day

All Main scheme placed routes (excluding Adjustment): applicants at 8 days after A level results day

Applicant type	Status	2010	2011	2012	2013	2014	2015	2016	2017	2018	2019
Main scheme	Placed (Clearing)	470	650	630	720	700	890	900	1,080	1,140	1,220
	Placed (Firm)	21,710	19,040	19,020	19,740	21,650	21,390	22,980	21,590	21,040	21,850
	Placed (Insurance)	290	260	280	360	410	440	490	490	480	520
	Placed (Other)	1,100	950	720	660	960	880	840	1,000	980	1,150

AB.8 Placed main scheme applicants to nursing from all domiciles: 8 days after A level results day

All Main scheme placed routes (excluding Adjustment): difference between cycle and 2018 cycle

Applicant type	Status	2010	2011	2012	2013	2014	2015	2016	2017	2018	2019
Main scheme	Placed (Clearing)	-59%	-42%	-45%	-37%	-38%	-21%	-20%	-5%	0%	7%
	Placed (Firm)	3%	-9%	-10%	-6%	3%	2%	9%	3%	0%	4%
	Placed (Insurance)	-38%	-45%	-41%	-25%	-15%	-8%	3%	3%	0%	10%
	Placed (Other)	12%	-3%	-27%	-33%	-2%	-10%	-14%	2%	0%	17%

Note: The percentage change is not recorded in the above table for groups with fewer than 10 placed applicants in that cycle or in the 2018 cycle.

AB.9 Main scheme applicants placed to nursing through adjustment: 8 days after A level results day

Placed through adjustment: difference between cycle and 2018 cycle

[This chart is not part of this report]

AB.10 Main scheme applicants placed to nursing through adjustment: 8 days after A level results day

Placed through adjustment: applicants at 8 days after A level results day

Applicant type	Status	2010	2011	2012	2013	2014	2015	2016	2017	2018	2019
Main scheme	Placed (Adjustment)	0	0	0	10	10	10	0	20	10	10

AB.11 Main scheme applicants placed to nursing through adjustment: 8 days after A level results day

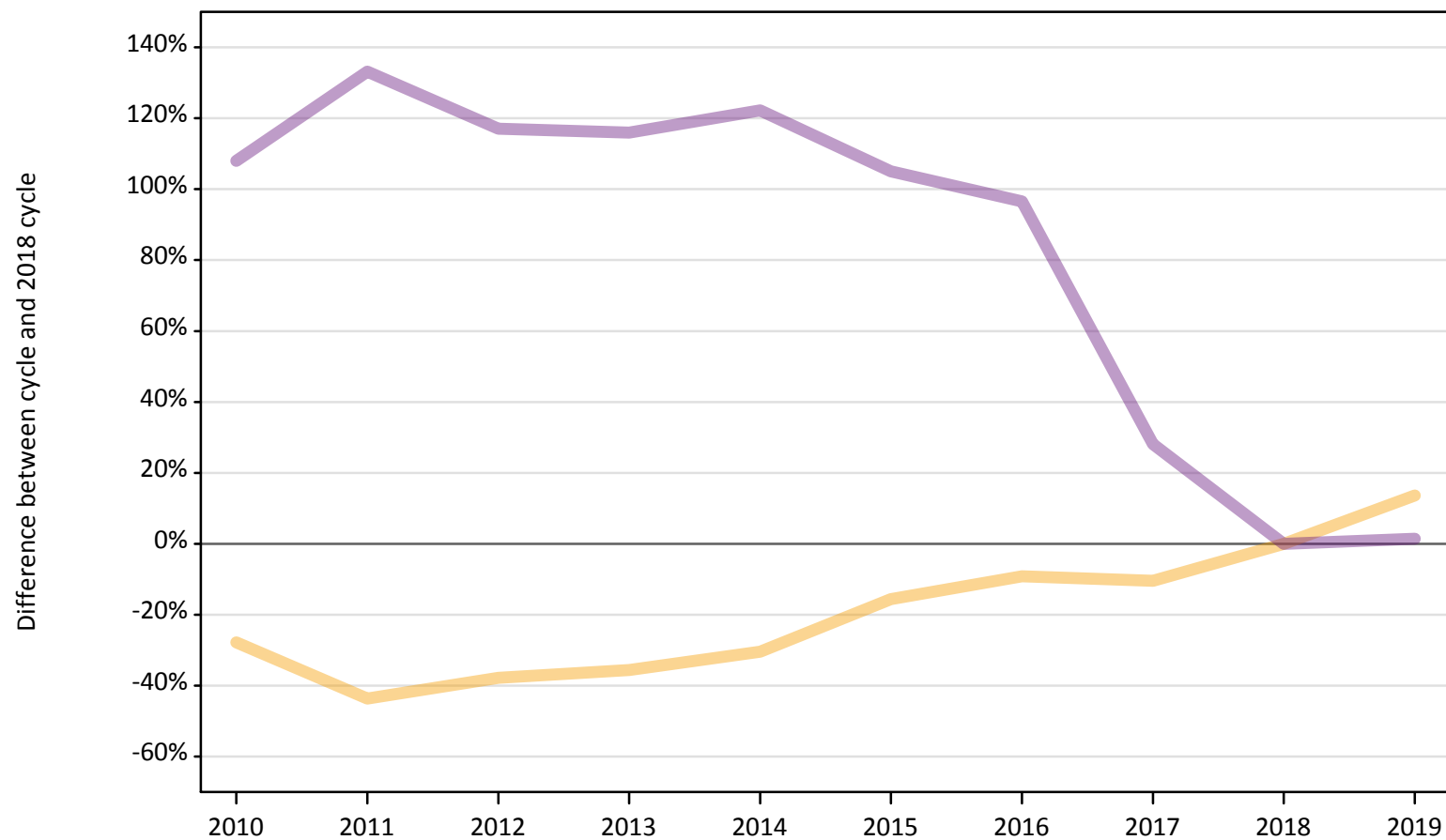
Placed through adjustment: difference between cycle and 2018 cycle

[This table is not part of this report]

AB.12 Main scheme applicants to nursing not currently placed from all domiciles: 8 days after A level results day

Applicants in unplaced states: difference between cycle and 2018 cycle

— Holding offer
— Free to be placed in Clearing



Note: The percentage change is not plotted in the above chart for groups with fewer than 30 unplaced applicants in any one cycle.

AB.13 Main scheme applicants to nursing not currently placed from all domiciles: 8 days after A level results day

Applicants in unplaced states: applicants at 8 days after A level results day

Applicant type	Status	2010	2011	2012	2013	2014	2015	2016	2017	2018	2019
Main scheme	Holding offer	3,550	2,770	3,060	3,170	3,430	4,160	4,470	4,410	4,930	5,590
	Free to be placed in Clearing	29,810	33,420	31,110	30,960	31,850	29,380	28,170	18,360	14,330	14,540

AB.14 Main scheme applicants to nursing not currently placed from all domiciles: 8 days after A level results day

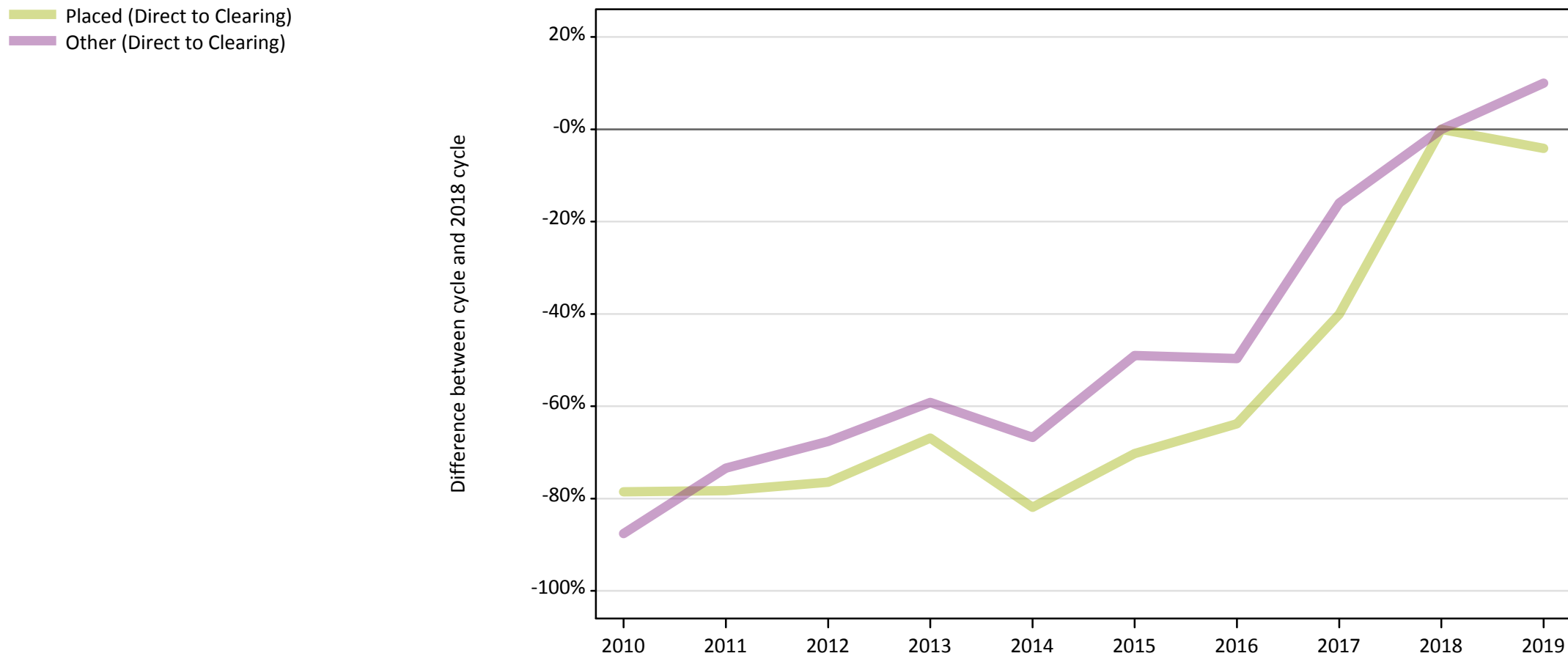
Applicants in unplaced states: difference between cycle and 2018 cycle

Applicant type	Status	2010	2011	2012	2013	2014	2015	2016	2017	2018	2019
Main scheme	Holding offer	-28%	-44%	-38%	-36%	-30%	-16%	-9%	-10%	0%	14%
	Free to be placed in Clearing	108%	133%	117%	116%	122%	105%	97%	28%	0%	1%

Note: The percentage change is not recorded in the above table for groups with fewer than 10 unplaced applicants in that cycle or in the 2018 cycle.

AB.15 Direct to Clearing applicants from all domiciles: 8 days after A level results day

Direct to Clearing: difference between cycle and 2018 cycle



Note: The percentage change is not plotted in the above chart for groups with fewer than 30 placed applicants in any one cycle.

AB.16 Direct to Clearing applicants from all domiciles: 8 days after A level results day

Direct to Clearing 8 days after A level results day

Applicant type	Status	2010	2011	2012	2013	2014	2015	2016	2017	2018	2019
Direct to Clearing	Placed (Direct to Clearing)	80	80	90	130	70	120	140	230	390	370
	Other (Direct to Clearing)	60	120	150	180	150	230	230	380	450	500

AB.17 Direct to Clearing applicants from all domiciles: 8 days after A level results day

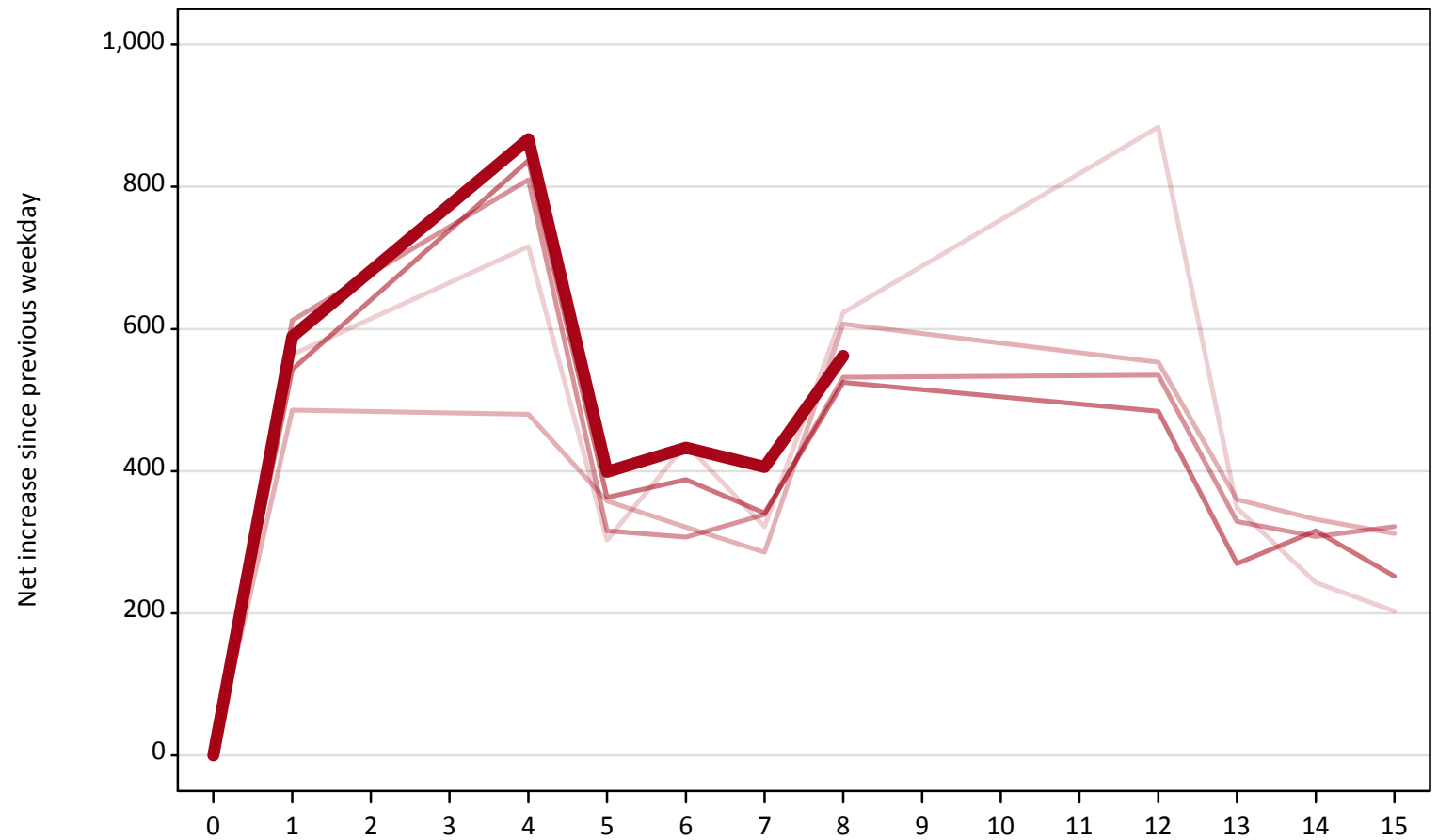
Direct to Clearing: difference between cycle and 2018 cycle

Applicant type	Status	2010	2011	2012	2013	2014	2015	2016	2017	2018	2019
Direct to Clearing	Placed (Direct to Clearing)	-79%	-78%	-76%	-67%	-82%	-70%	-64%	-40%	0%	-4%
	Other (Direct to Clearing)	-88%	-73%	-68%	-59%	-67%	-49%	-50%	-16%	0%	10%

Note: The percentage change is not recorded in the above table for groups with fewer than 10 placed applicants in that cycle or in the 2018 cycle.

AB.18 All Placed: Daily net change (from all domiciles)
Net increase since previous weekday (2019 cycle up to 8 days after A level results day)

- 2015
- 2016
- 2017
- 2018
- 2019**

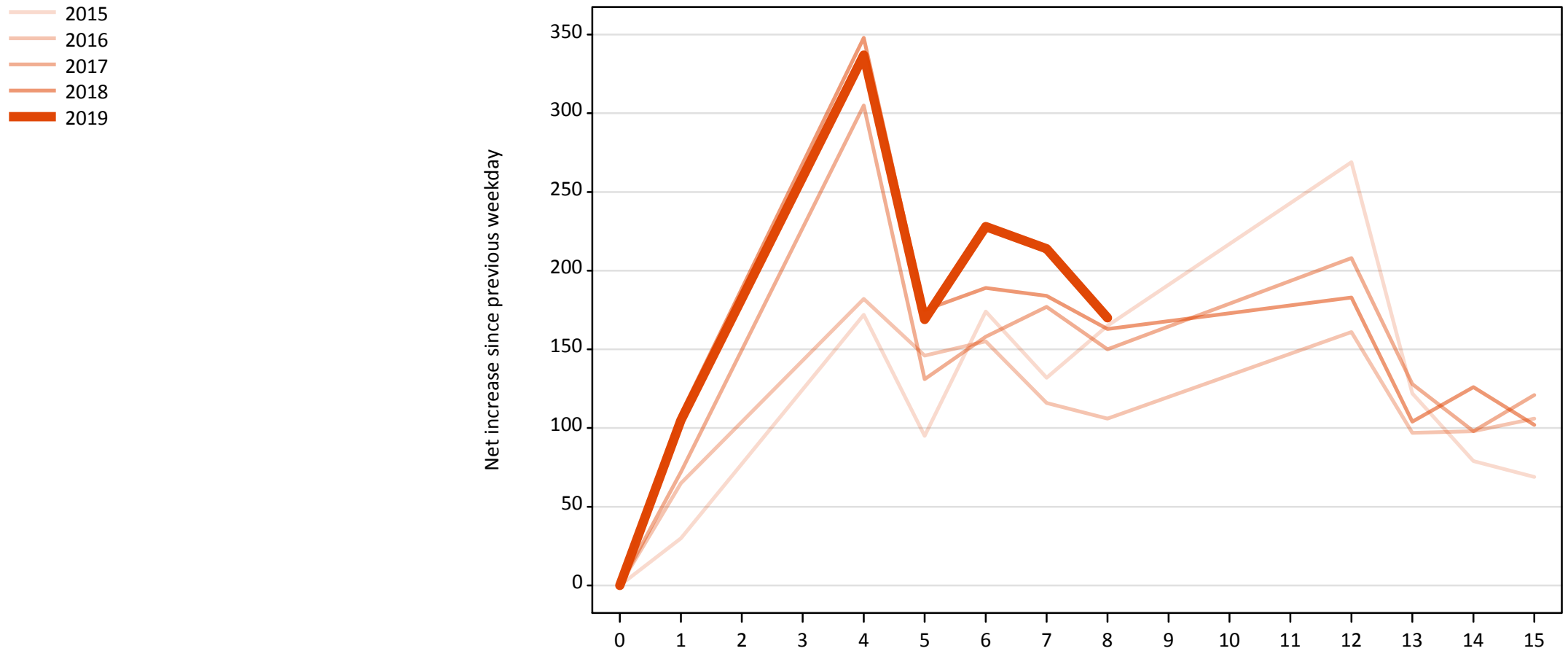


AB.19 All Placed: Daily net change (from all domiciles)

Net increase since previous weekday (2019 cycle up to 8 days after A level results day)

Applicant status, days since A level results day		2015	2016	2017	2018	2019
All Placed	0	0	0	0	0	0
	1	560	490	610	540	590
	4	720	480	810	840	870
	5	300	360	320	360	400
	6	440	320	310	390	430
	7	320	290	340	340	410
	8	620	610	530	530	560
	12	880	550	540	480	
	13	350	360	330	270	
	14	240	330	310	320	
	15	200	310	320	250	

AB.20 Placed through Clearing only: Daily net change (from all domiciles)
Net increase since previous weekday (2019 cycle up to 8 days after A level results day)

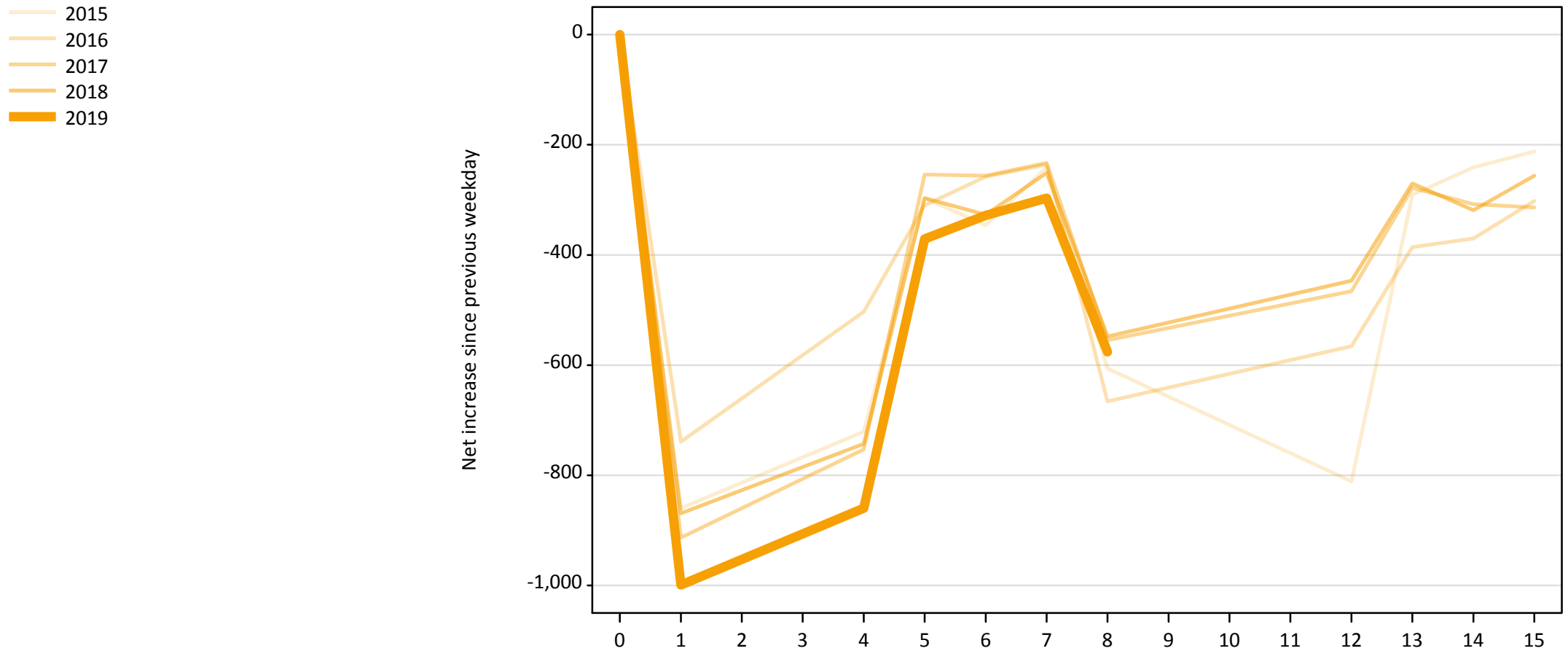


AB.21 Placed through Clearing only: Daily net change (from all domiciles)
 Net increase since previous weekday (2019 cycle up to 8 days after A level results day)

Applicant status, days since A level results day		2015	2016	2017	2018	2019
Placed through Clearing only	0	0	0	0	0	0
	1	30	70	70	110	110
	4	170	180	310	350	340
	5	100	150	130	180	170
	6	170	160	160	190	230
	7	130	120	180	180	210
	8	170	110	150	160	170
	12	270	160	210	180	
	13	120	100	130	100	
	14	80	100	100	130	
	15	70	110	120	100	

AB.22 Holding Offer: Daily net change (from all domiciles)

Net increase since previous weekday (2019 cycle up to 8 days after A level results day)



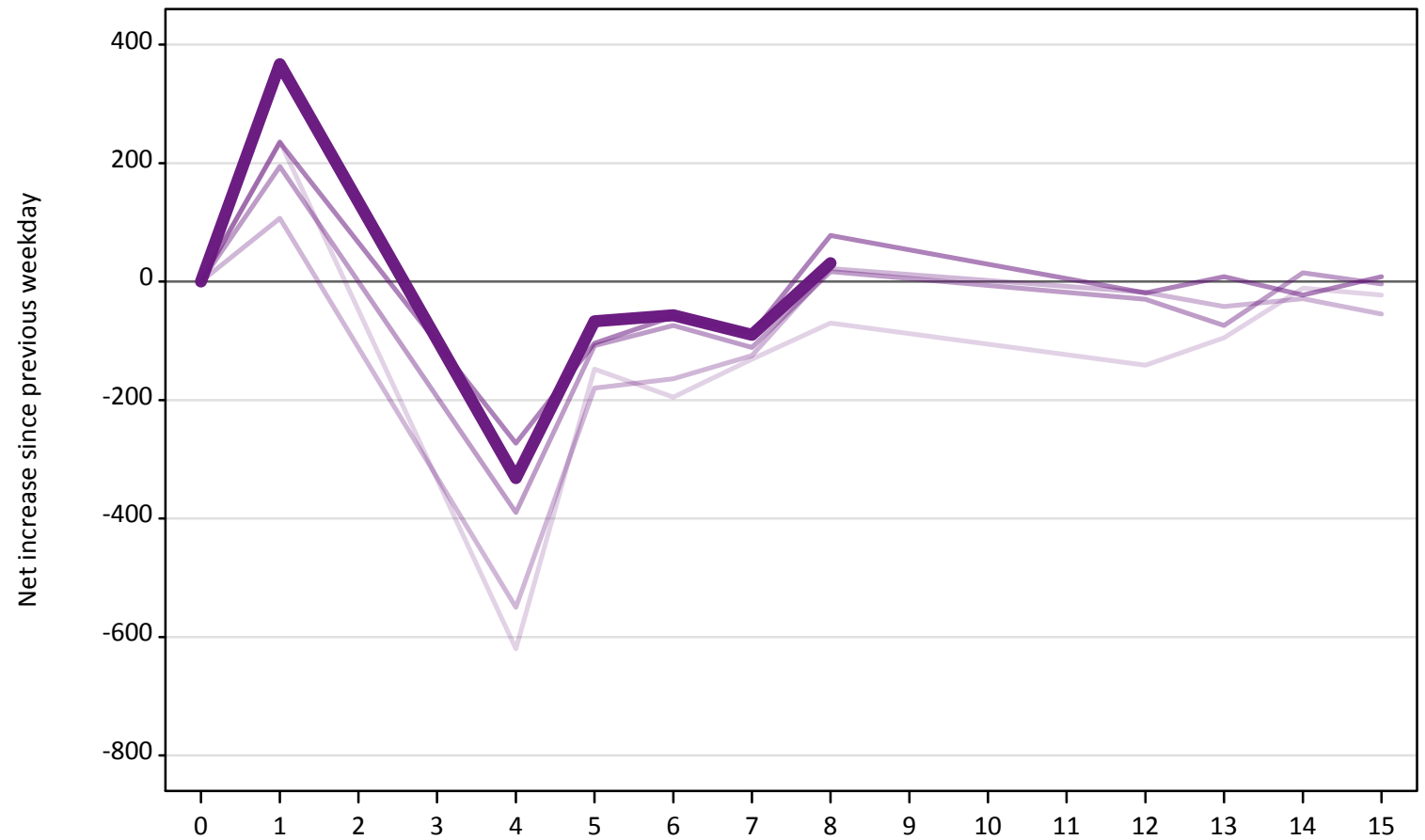
AB.23 Holding Offer: Daily net change (from all domiciles)

Net increase since previous weekday (2019 cycle up to 8 days after A level results day)

Applicant status, days since A level results day	2015	2016	2017	2018	2019	
Holding Offer	0	0	0	0	0	
	1	-860	-740	-910	-870	-1,000
	4	-720	-500	-750	-740	-860
	5	-300	-310	-250	-300	-370
	6	-350	-260	-260	-330	-330
	7	-240	-240	-230	-250	-300
	8	-610	-670	-560	-550	-580
	12	-810	-570	-470	-450	
	13	-290	-390	-280	-270	
	14	-240	-370	-310	-320	
	15	-210	-300	-310	-260	

AB.24 Free to be placed in Clearing: Daily net change (from all domiciles)
Net increase since previous weekday (2019 cycle up to 8 days after A level results day)

- 2015
- 2016
- 2017
- 2018
- 2019



AB.25 Free to be placed in Clearing: Daily net change (from all domiciles)
 Net increase since previous weekday (2019 cycle up to 8 days after A level results day)

Applicant status, days since A level results day		2015	2016	2017	2018	2019
Free to be placed in Clearing	0	0	0	0	0	0
	1	240	110	190	240	370
	4	-620	-550	-390	-270	-330
	5	-150	-180	-110	-100	-70
	6	-200	-160	-70	-60	-60
	7	-130	-130	-110	-90	-90
	8	-70	20	20	80	30
	12	-140	-20	-30	-20	
	13	-100	-40	-70	10	
	14	-10	-30	20	-20	
	15	-20	-60	0	10	