

Daily Clearing Analysis: Country

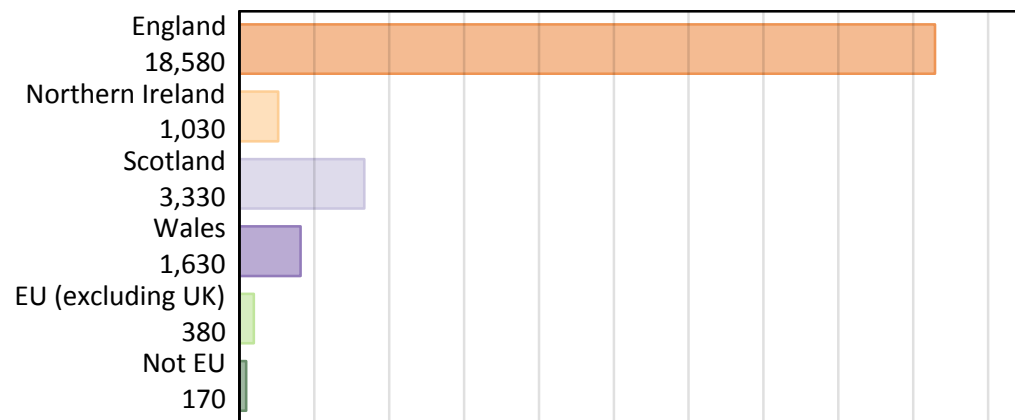
B7 Nursing analysis at 00:05 on Friday 23 August 2019 (8 days after A level results day)

BB.1 Placed applicants to nursing by country of provider and domicile, 2019 cycle

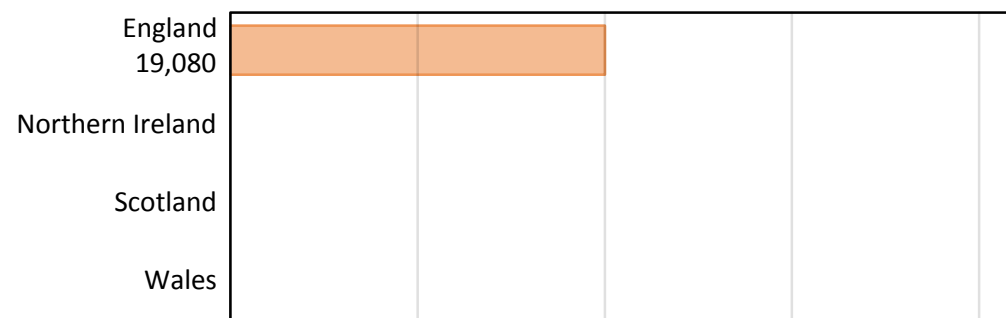
Domicile of applicant	Country of provider				
	England	Northern Ireland	Scotland	Wales	UK
England	18,320				18,580
Northern Ireland	160				1,030
Scotland	20				3,330
Wales	310				1,630
EU (excluding UK)	130				380
Not EU	150				170
All	19,080				25,120

Note that figures for providers in Northern Ireland, Scotland, and Wales are not reported here.

BB.2 Placed applicants to nursing by domicile group



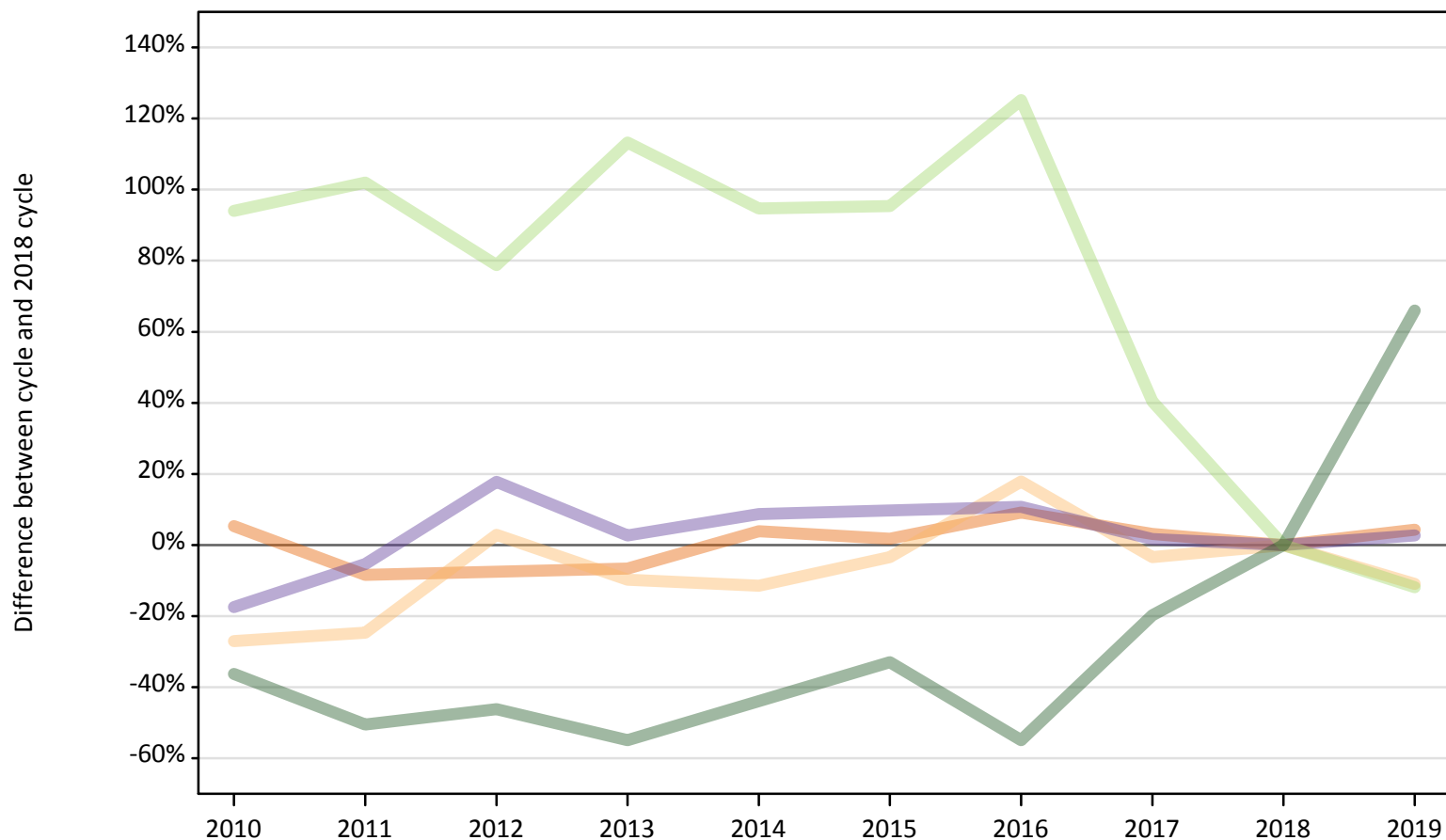
BB.3 Placed applicants to nursing by country of provider



Note that figures for providers in Northern Ireland, Scotland, and Wales are not reported here.

BB.4 Placed applicants to nursing at 8 days after A level results day: providers in England
 Selected applicant domiciles: difference between cycle and 2018 cycle (at 8 days after A level results day)

- England
- Northern Ireland
- Scotland
- Wales
- EU (excluding UK)
- Not EU



Note: The percentage change is not plotted in the above chart for groups with fewer than 30 placed applicants in any one cycle.

BB.5 Placed applicants to nursing at 8 days after A level results day: providers in England

Placed applicants to nursing by domicile (at 8 days after A level results day)

Domicile of applicant	2010	2011	2012	2013	2014	2015	2016	2017	2018	2019
England	18,510	16,090	16,240	16,400	18,240	17,880	19,160	18,110	17,570	18,320
Northern Ireland	130	130	180	160	150	170	210	170	170	160
Scotland	30	30	40	20	40	30	30	20	20	20
Wales	250	280	350	310	320	330	330	300	300	310
EU (excluding UK)	290	310	270	320	290	300	340	210	150	130
Not EU	60	50	50	40	50	60	40	70	90	150

BB.6 Placed applicants to nursing at 8 days after A level results day: providers in England

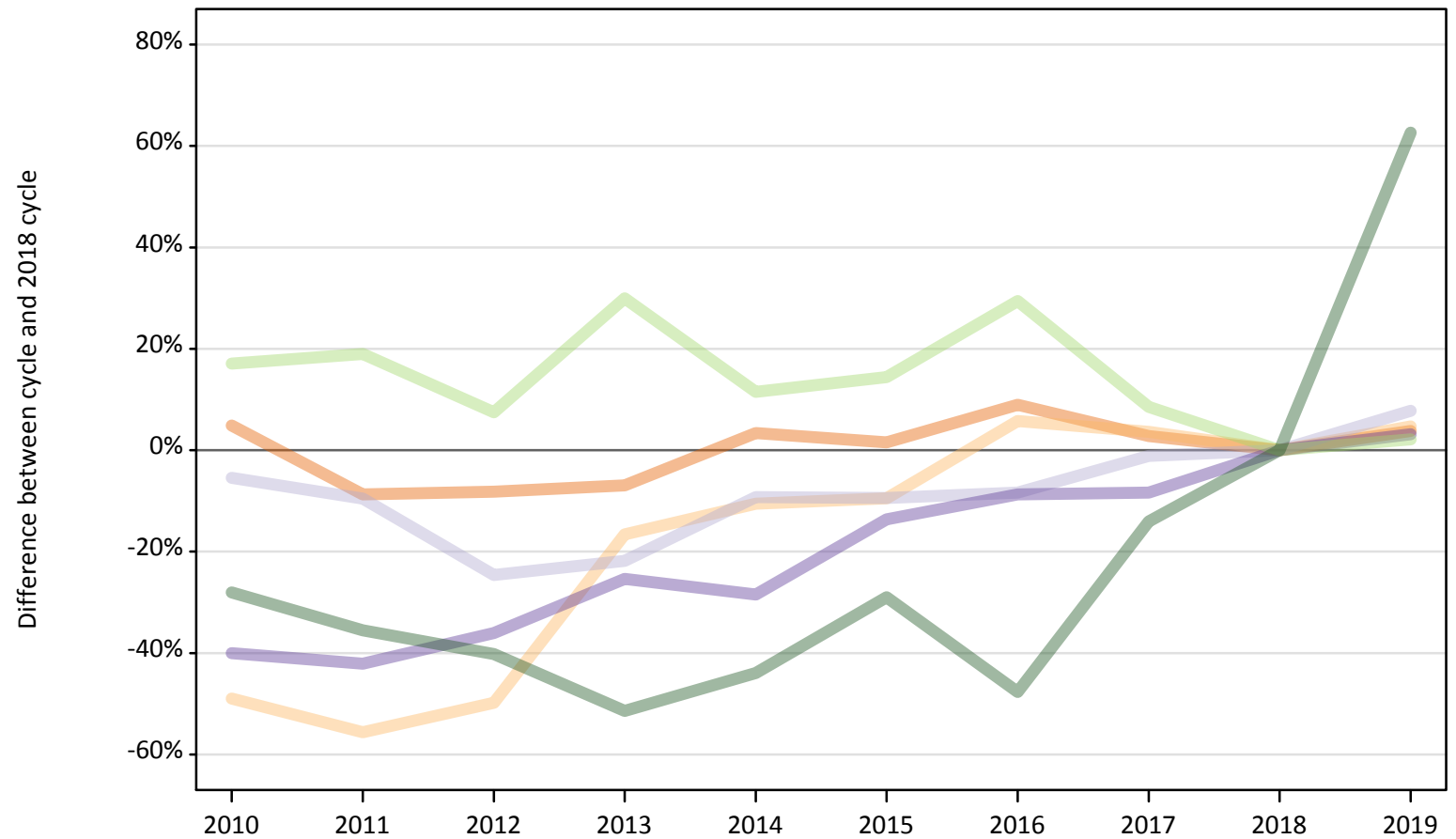
Selected applicant domiciles: difference between cycle and 2018 cycle (at 8 days after A level results day)

Domicile of applicant	2010	2011	2012	2013	2014	2015	2016	2017	2018	2019
England	5%	-8%	-8%	-7%	4%	2%	9%	3%	0%	4%
Northern Ireland	-27%	-25%	3%	-10%	-11%	-3%	18%	-3%	0%	-11%
Scotland	127%	93%	167%	40%	153%	100%	100%	40%	0%	27%
Wales	-17%	-5%	18%	3%	9%	10%	11%	2%	0%	3%
EU (excluding UK)	94%	102%	79%	113%	95%	95%	125%	40%	0%	-12%
Not EU	-36%	-51%	-46%	-55%	-44%	-33%	-55%	-20%	0%	66%

Note: The percentage change is not recorded in the above table for groups with fewer than 10 placed applicants in that cycle or in the 2018 cycle.

BB.7 Placed applicants to nursing at 8 days after A level results day: providers in the UK
 Selected applicant domiciles: difference between cycle and 2018 cycle (at 8 days after A level results day)

- England
- Northern Ireland
- Scotland
- Wales
- EU (excluding UK)
- Not EU



Note: The percentage change is not plotted in the above chart for groups with fewer than 30 placed applicants in any one cycle.

BB.8 Placed applicants to nursing at 8 days after A level results day: providers in the UK

Placed applicants to nursing by domicile (at 8 days after A level results day)

Domicile of applicant	2010	2011	2012	2013	2014	2015	2016	2017	2018	2019
England	18,770	16,330	16,440	16,660	18,510	18,170	19,510	18,390	17,900	18,580
Northern Ireland	500	440	490	820	880	890	1,040	1,020	980	1,030
Scotland	2,920	2,800	2,330	2,420	2,800	2,800	2,830	3,050	3,090	3,330
Wales	950	910	1,010	1,180	1,130	1,360	1,440	1,440	1,580	1,630
EU (excluding UK)	440	450	400	490	420	430	480	410	370	380
Not EU	80	70	60	50	60	80	60	90	110	170

BB.9 Placed applicants to nursing at 8 days after A level results day: providers in the UK

Selected applicant domiciles: difference between cycle and 2018 cycle (at 8 days after A level results day)

Domicile of applicant	2010	2011	2012	2013	2014	2015	2016	2017	2018	2019
England	5%	-9%	-8%	-7%	3%	2%	9%	3%	0%	4%
Northern Ireland	-49%	-56%	-50%	-17%	-11%	-9%	6%	4%	0%	5%
Scotland	-5%	-10%	-25%	-22%	-9%	-9%	-8%	-1%	0%	8%
Wales	-40%	-42%	-36%	-25%	-28%	-14%	-9%	-8%	0%	3%
EU (excluding UK)	17%	19%	7%	30%	11%	14%	29%	9%	0%	2%
Not EU	-28%	-36%	-40%	-51%	-44%	-29%	-48%	-14%	0%	63%

Note: The percentage change is not recorded in the above table for groups with fewer than 10 placed applicants in that cycle or in the 2018 cycle.