

## B7 Nursing analysis at 00:05 on Friday 23 August 2019 (8 days after A level results day)

### CB.1 Placed applicants to nursing by country of domicile and age group, 2019 cycle (8 days after A level results day)

Domicile of applicant	Age group				
	17 and under	18	19	20 to 24	25 and over
England	0	4,880	2,230	4,010	7,470
Northern Ireland	0	330	180	240	280
Scotland	20	670	340	750	1,540
Wales	0	330	230	390	680
UK	30	6,220	2,980	5,380	9,960

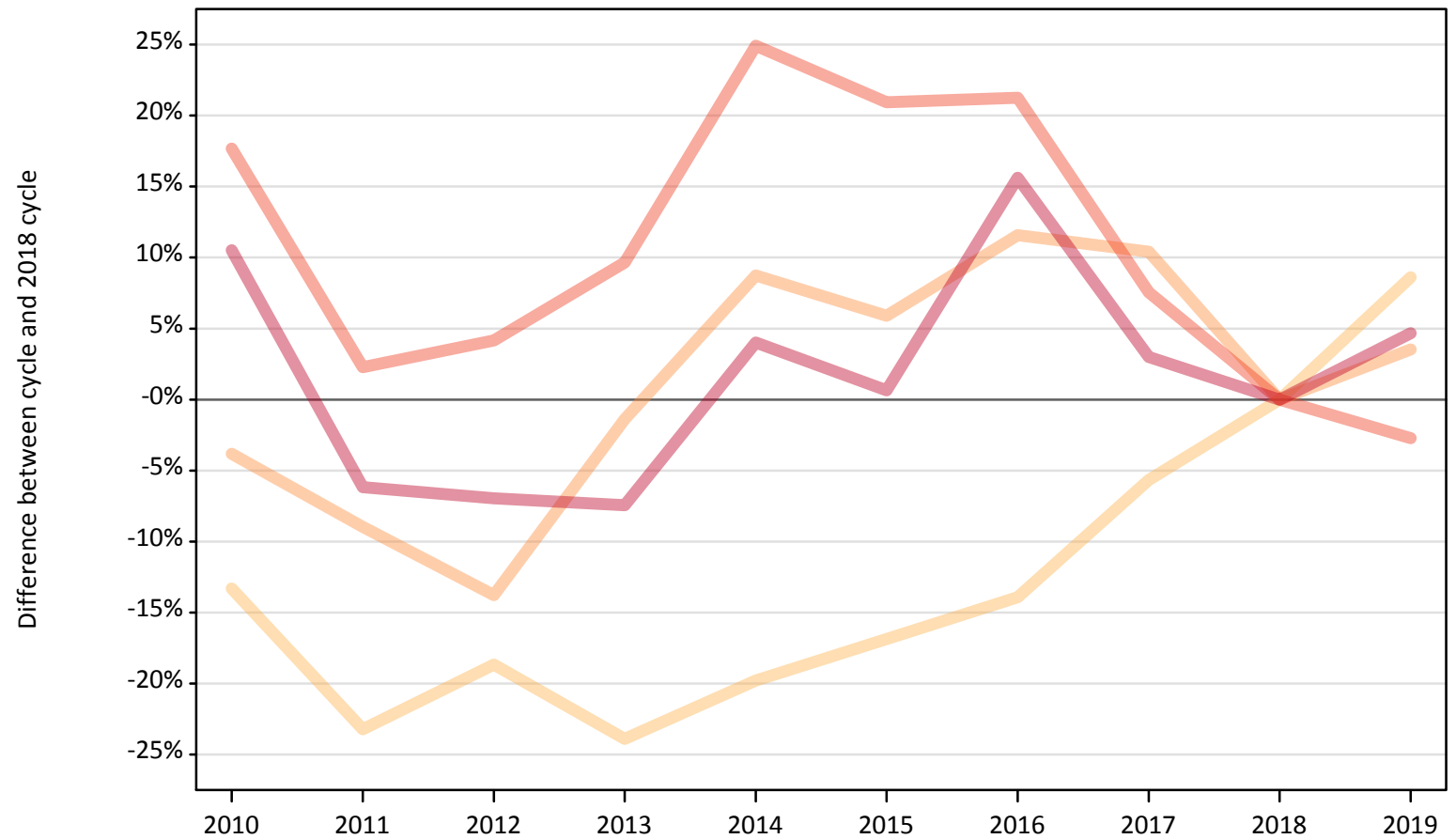
### CB.2 Proportion of 18 year old population placed to nursing by country of domicile, 2019 cycle (8 days after A level results day)

Domicile of applicant	Age group	2019
England	18	0.8%
Northern Ireland	18	1.5%
Scotland	18	1.2%
Wales	18	1.0%

### CB.3 Placed applicants to nursing from England by age group at 8 days after A level results day

Selected age groups: difference between cycle and 2018 cycle

- 17 and under
- 18
- 19
- 20 to 24
- 25 and over



Note: The percentage change is not plotted in the above chart for groups with fewer than 30 placed applicants in any one cycle.

### CB.4 Placed applicants to nursing from England by age group at 8 days after A level results day

All age groups

Domicile of applicant	Age group	2010	2011	2012	2013	2014	2015	2016	2017	2018	2019
England	17 and under	80	30	0	0	10	0	0	10	10	0
	18	3,890	3,450	3,650	3,420	3,600	3,730	3,870	4,240	4,490	4,880
	19	2,070	1,960	1,850	2,120	2,340	2,280	2,400	2,370	2,150	2,230
	20 to 24	4,850	4,210	4,290	4,510	5,140	4,980	4,990	4,430	4,120	4,010
	25 and over	7,880	6,690	6,640	6,600	7,420	7,180	8,250	7,350	7,130	7,470

### CB.5 Placed applicants to nursing from England by age group at 8 days after A level results day

Selected age groups: difference between cycle and 2018 cycle

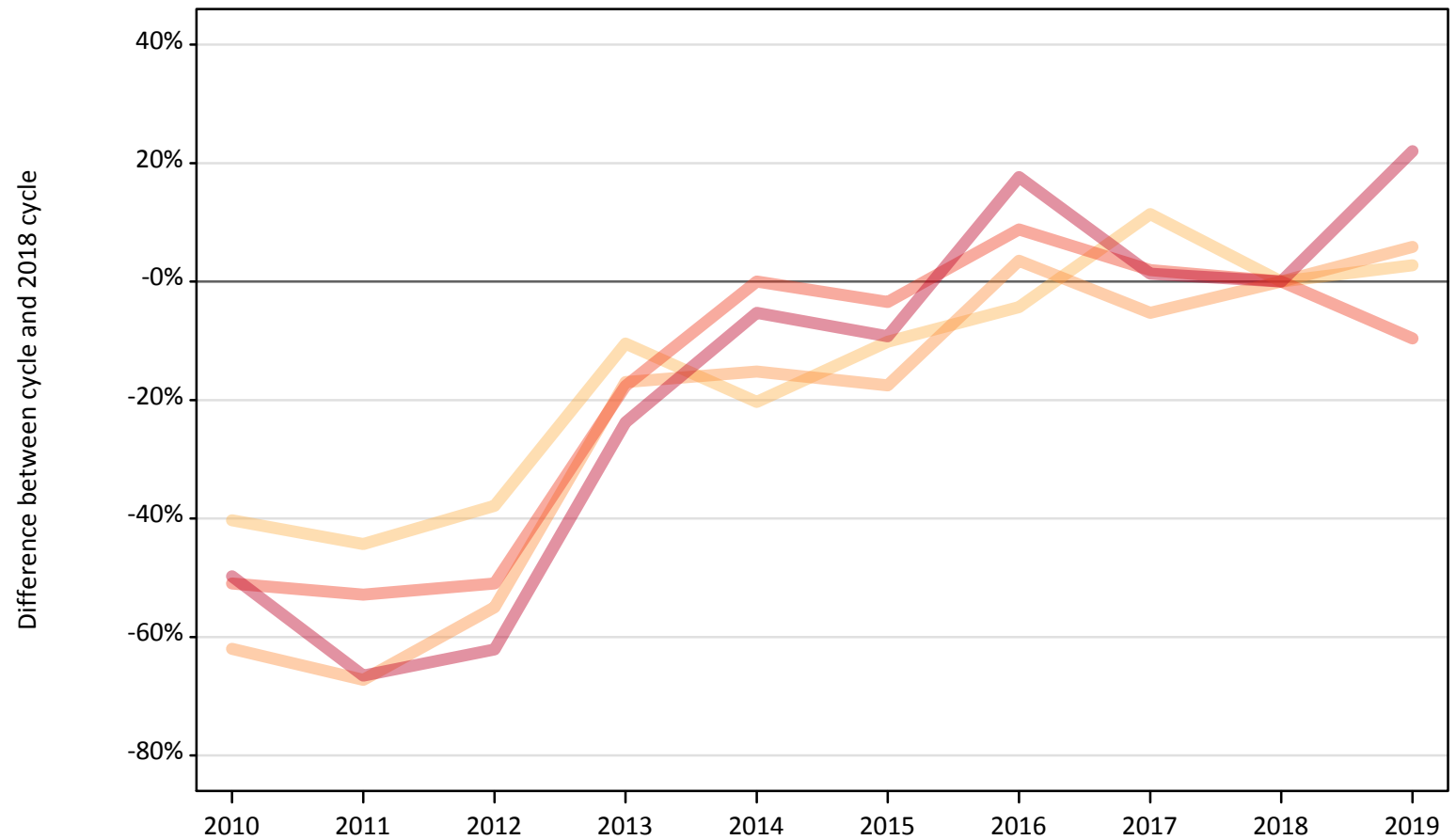
Domicile of applicant	Age group	2010	2011	2012	2013	2014	2015	2016	2017	2018	2019
England	17 and under										
	18	-13%	-23%	-19%	-24%	-20%	-17%	-14%	-6%	0%	9%
	19	-4%	-9%	-14%	-1%	9%	6%	12%	10%	0%	4%
	20 to 24	18%	2%	4%	10%	25%	21%	21%	8%	0%	-3%
	25 and over	11%	-6%	-7%	-7%	4%	1%	16%	3%	0%	5%

Note: The percentage change is not recorded in the above table for groups with fewer than 10 placed applicants in that cycle or in the 2018 cycle.

## CB.6 Placed applicants to nursing from Northern Ireland by age group at 8 days after A level results day

Selected age groups: difference between cycle and 2018 cycle

- 17 and under
- 18
- 19
- 20 to 24
- 25 and over



Note: The percentage change is not plotted in the above chart for groups with fewer than 30 placed applicants in any one cycle.

### CB.7 Placed applicants to nursing from Northern Ireland by age group at 8 days after A level results day

All age groups

Domicile of applicant	Age group	2010	2011	2012	2013	2014	2015	2016	2017	2018	2019
Northern Ireland	17 and under	0	0	0	0	0	0	0	0	0	0
	18	190	180	200	290	260	290	310	360	330	330
	19	70	60	80	140	150	140	180	160	170	180
	20 to 24	130	120	130	220	260	250	280	270	260	240
	25 and over	110	80	90	170	220	210	270	230	230	280

### CB.8 Placed applicants to nursing from Northern Ireland by age group at 8 days after A level results day

Selected age groups: difference between cycle and 2018 cycle

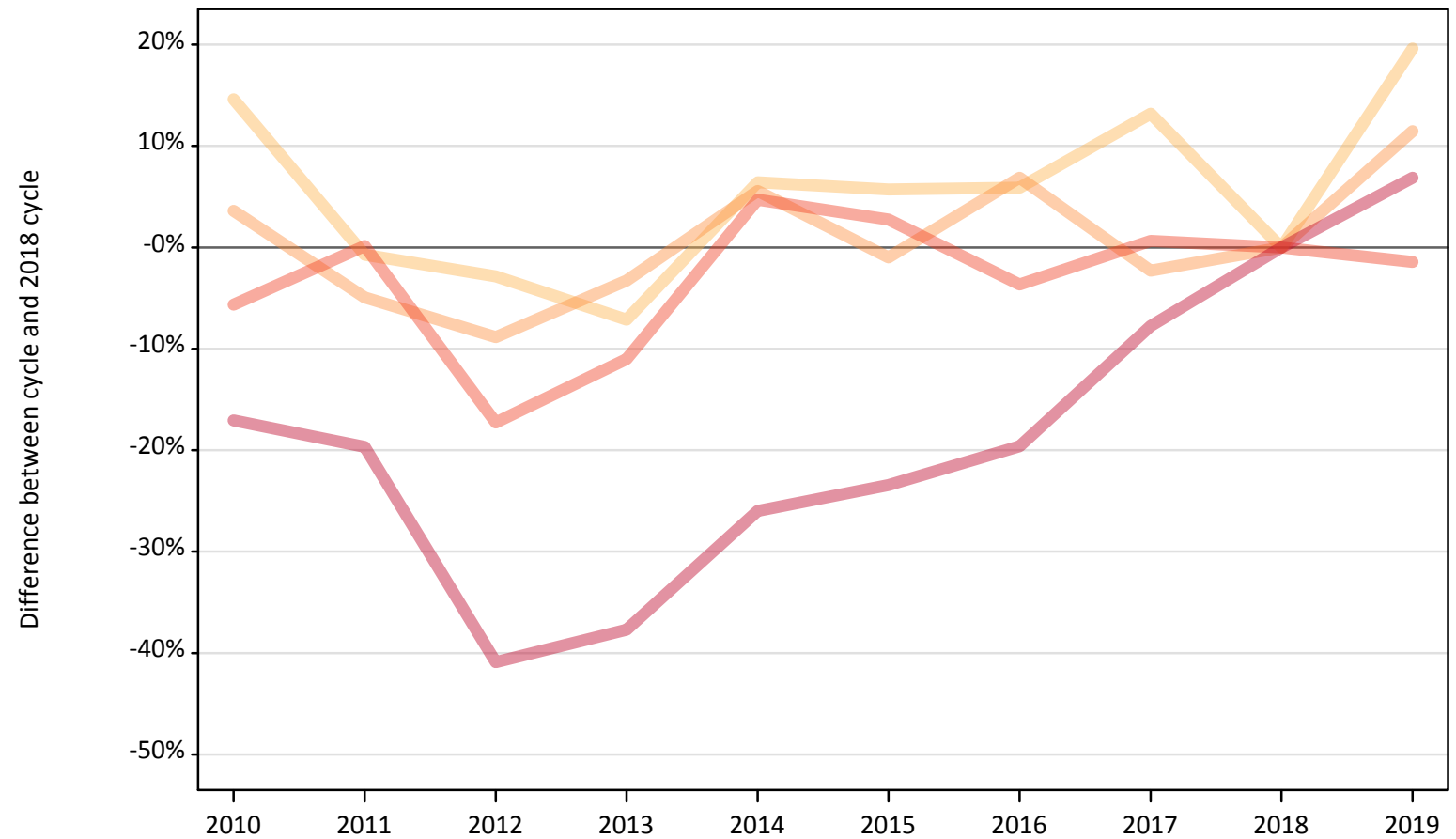
Domicile of applicant	Age group	2010	2011	2012	2013	2014	2015	2016	2017	2018	2019
Northern Ireland	17 and under										
	18	-40%	-44%	-38%	-10%	-20%	-10%	-4%	11%	0%	3%
	19	-62%	-67%	-55%	-17%	-15%	-18%	4%	-5%	0%	6%
	20 to 24	-51%	-53%	-51%	-18%	0%	-3%	9%	2%	0%	-10%
	25 and over	-50%	-67%	-62%	-24%	-5%	-9%	18%	1%	0%	22%

Note: The percentage change is not recorded in the above table for groups with fewer than 10 placed applicants in that cycle or in the 2018 cycle.

## CB.9 Placed applicants to nursing from Scotland by age group at 8 days after A level results day

Selected age groups: difference between cycle and 2018 cycle

- 17 and under
- 18
- 19
- 20 to 24
- 25 and over



Note: The percentage change is not plotted in the above chart for groups with fewer than 30 placed applicants in any one cycle.

### CB.10 Placed applicants to nursing from Scotland by age group at 8 days after A level results day

All age groups

Domicile of applicant	Age group	2010	2011	2012	2013	2014	2015	2016	2017	2018	2019
Scotland	17 and under	40	20	20	20	20	10	20	20	20	20
	18	640	560	550	520	600	590	590	640	560	670
	19	320	290	280	300	320	300	330	300	310	340
	20 to 24	720	770	630	680	800	790	740	770	760	750
	25 and over	1,200	1,160	850	900	1,070	1,110	1,160	1,330	1,440	1,540

### CB.11 Placed applicants to nursing from Scotland by age group at 8 days after A level results day

Selected age groups: difference between cycle and 2018 cycle

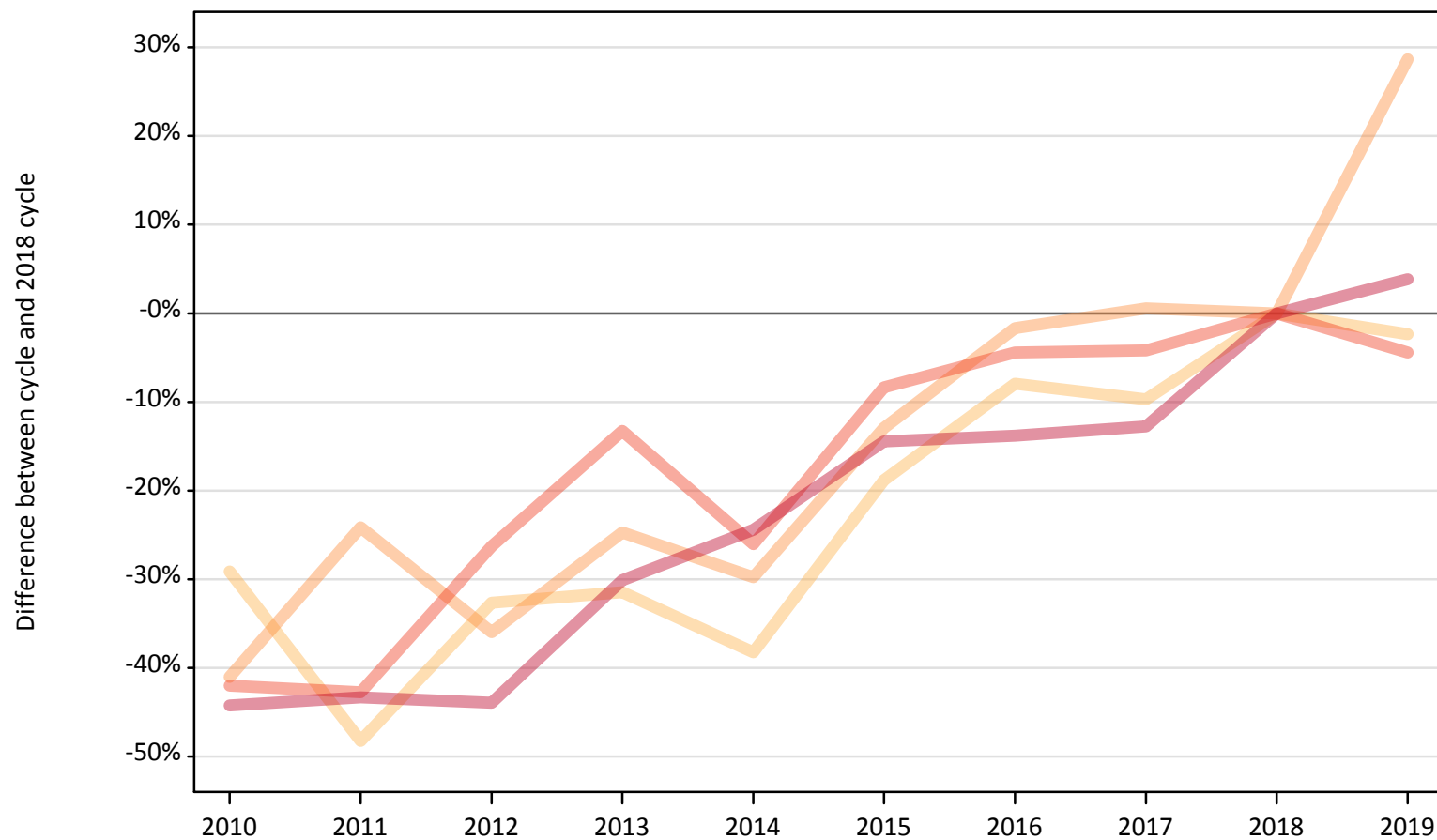
Domicile of applicant	Age group	2010	2011	2012	2013	2014	2015	2016	2017	2018	2019
Scotland	17 and under	175%	50%	38%	31%	6%	-19%	0%	31%	0%	44%
	18	15%	-1%	-3%	-7%	6%	6%	6%	13%	0%	20%
	19	4%	-5%	-9%	-3%	6%	-1%	7%	-2%	0%	11%
	20 to 24	-6%	0%	-17%	-11%	5%	3%	-4%	1%	0%	-1%
	25 and over	-17%	-20%	-41%	-38%	-26%	-23%	-20%	-8%	0%	7%

Note: The percentage change is not recorded in the above table for groups with fewer than 10 placed applicants in that cycle or in the 2018 cycle.

## CB.12 Placed applicants to nursing from Wales by age group at 8 days after A level results day

Selected age groups: difference between cycle and 2018 cycle

- 17 and under
- 18
- 19
- 20 to 24
- 25 and over



Note: The percentage change is not plotted in the above chart for groups with fewer than 30 placed applicants in any one cycle.



### CB.13 Placed applicants to nursing from Wales by age group at 8 days after A level results day

All age groups

Domicile of applicant	Age group	2010	2011	2012	2013	2014	2015	2016	2017	2018	2019
Wales	17 and under	0	0	0	0	0	0	0	0	0	0
	18	240	180	230	230	210	280	310	310	340	330
	19	110	140	110	130	130	160	180	180	180	230
	20 to 24	240	230	300	350	300	370	390	390	410	390
	25 and over	360	370	370	460	490	560	560	570	650	680

### CB.14 Placed applicants to nursing from Wales by age group at 8 days after A level results day

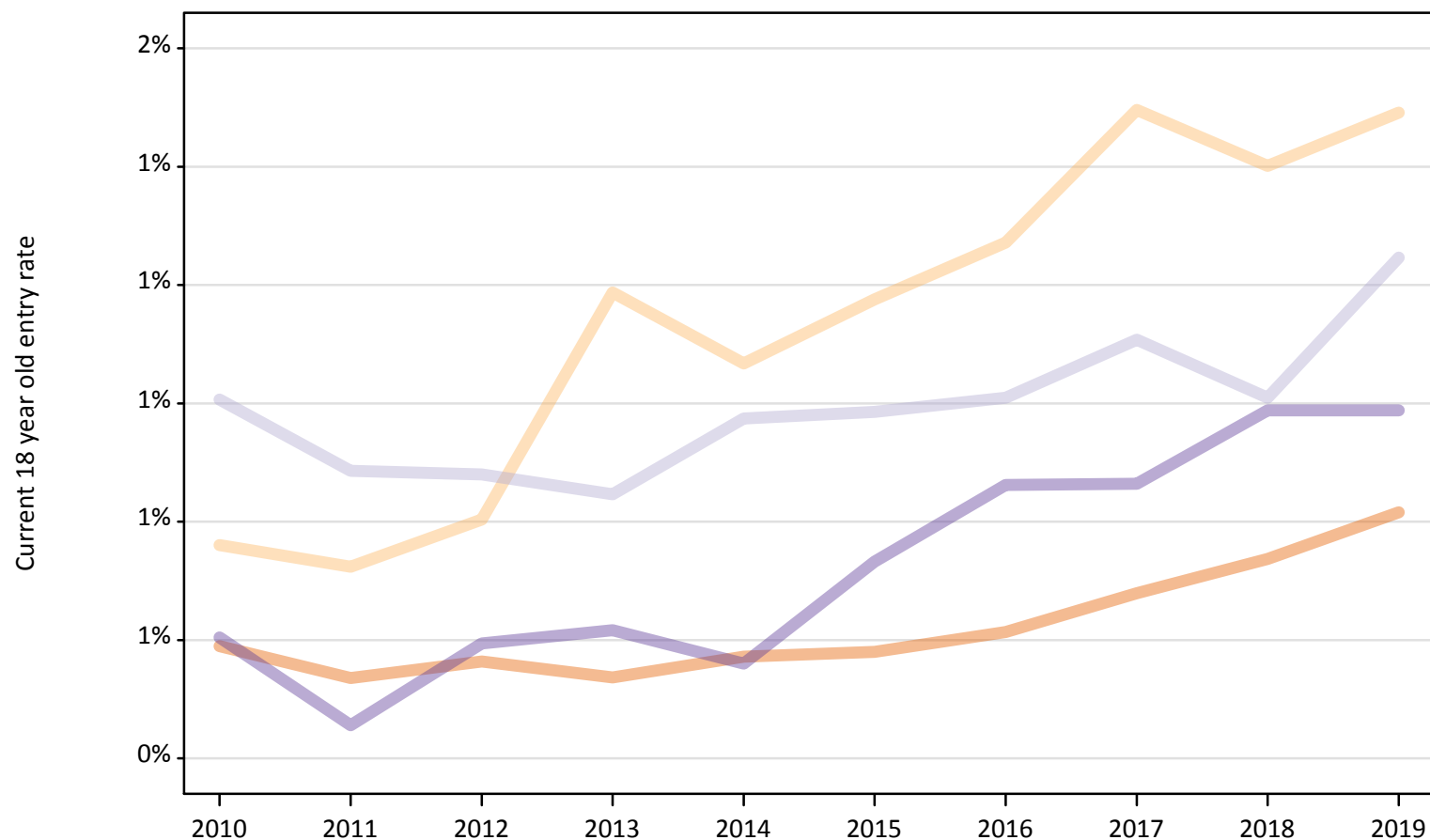
Selected age groups: difference between cycle and 2018 cycle

Domicile of applicant	Age group	2010	2011	2012	2013	2014	2015	2016	2017	2018	2019
Wales	17 and under										
	18	-29%	-48%	-33%	-31%	-38%	-19%	-8%	-10%	0%	-2%
	19	-41%	-24%	-36%	-25%	-30%	-13%	-2%	1%	0%	29%
	20 to 24	-42%	-43%	-26%	-13%	-26%	-8%	-4%	-4%	0%	-4%
	25 and over	-44%	-43%	-44%	-30%	-24%	-14%	-14%	-13%	0%	4%

Note: The percentage change is not recorded in the above table for groups with fewer than 10 placed applicants in that cycle or in the 2018 cycle.

### CB.15 Entry rates to nursing for 18 year olds by UK country of domicile: 8 days after A level results day

Placed 18 year old applicants as a proportion of the 18 year old population



### CB.16 Entry rates to nursing for 18 year olds by UK country of domicile: 8 days after A level results day

Placed 18 year old applicants as a proportion of the 18 year old population

Domicile of applicant	Age group	2010	2011	2012	2013	2014	2015	2016	2017	2018	2019
England	18	0.6%	0.5%	0.6%	0.5%	0.6%	0.6%	0.6%	0.7%	0.7%	0.8%
Northern Ireland	18	0.8%	0.7%	0.8%	1.2%	1.1%	1.2%	1.3%	1.5%	1.4%	1.5%
Scotland	18	1.0%	0.9%	0.9%	0.8%	1.0%	1.0%	1.0%	1.1%	1.0%	1.2%
Wales	18	0.6%	0.5%	0.6%	0.6%	0.6%	0.7%	0.9%	0.9%	1.0%	1.0%