

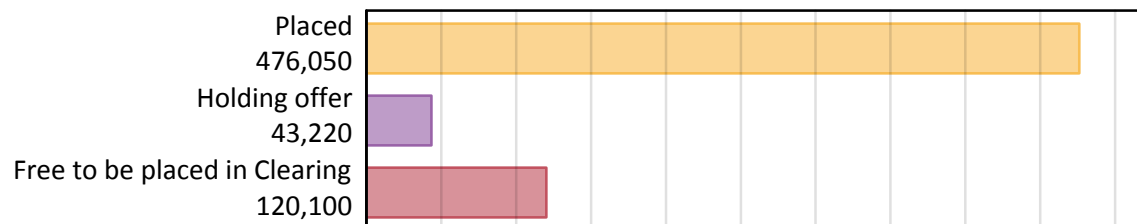
Daily Clearing Analysis: Overview

Analysis at 00:05 on Tuesday 27 August 2019 (12 days after A level results day)

A.1 Applicants by type and status from all domiciles, 2019 cycle

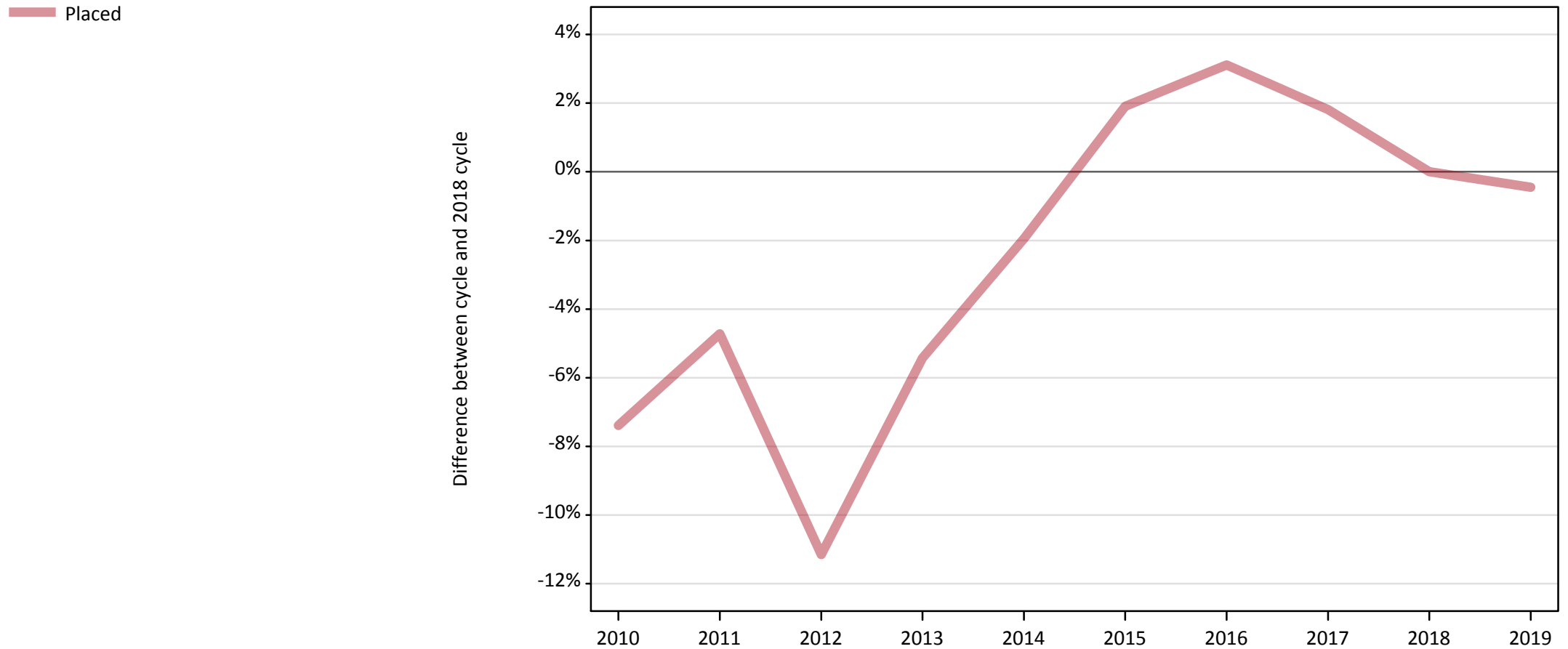
Applicant type	Status	2019
Main scheme	Placed (Clearing)	44,030
	Placed (Adjustment)	600
	Placed (Firm)	374,030
	Placed (Insurance)	33,460
	Placed (Other)	13,570
	Holding offer	43,220
	Free to be placed in Clearing	120,100
Direct to Clearing	Placed (Direct to Clearing)	10,350
	Other (Direct to Clearing)	8,770
All applicants	Placed	476,050

A.2 Summary of applicants who are placed, holding offers or free to be placed in Clearing (all domiciles)



A.3 All placed applicants from all domiciles: 12 days after A level results day

All placed applicants: difference between cycle and 2018 cycle



Note: The percentage change is not plotted in the above chart for groups with fewer than 30 placed applicants in any one cycle.

A.4 All placed applicants from all domiciles: 12 days after A level results day

All placed applicants: applicants at 12 days after A level results day

Applicant type	Status	2010	2011	2012	2013	2014	2015	2016	2017	2018	2019
All applicants	Placed	442,860	455,630	424,880	452,250	468,910	487,330	493,100	486,890	478,220	476,050

A.5 All placed applicants from all domiciles: 12 days after A level results day

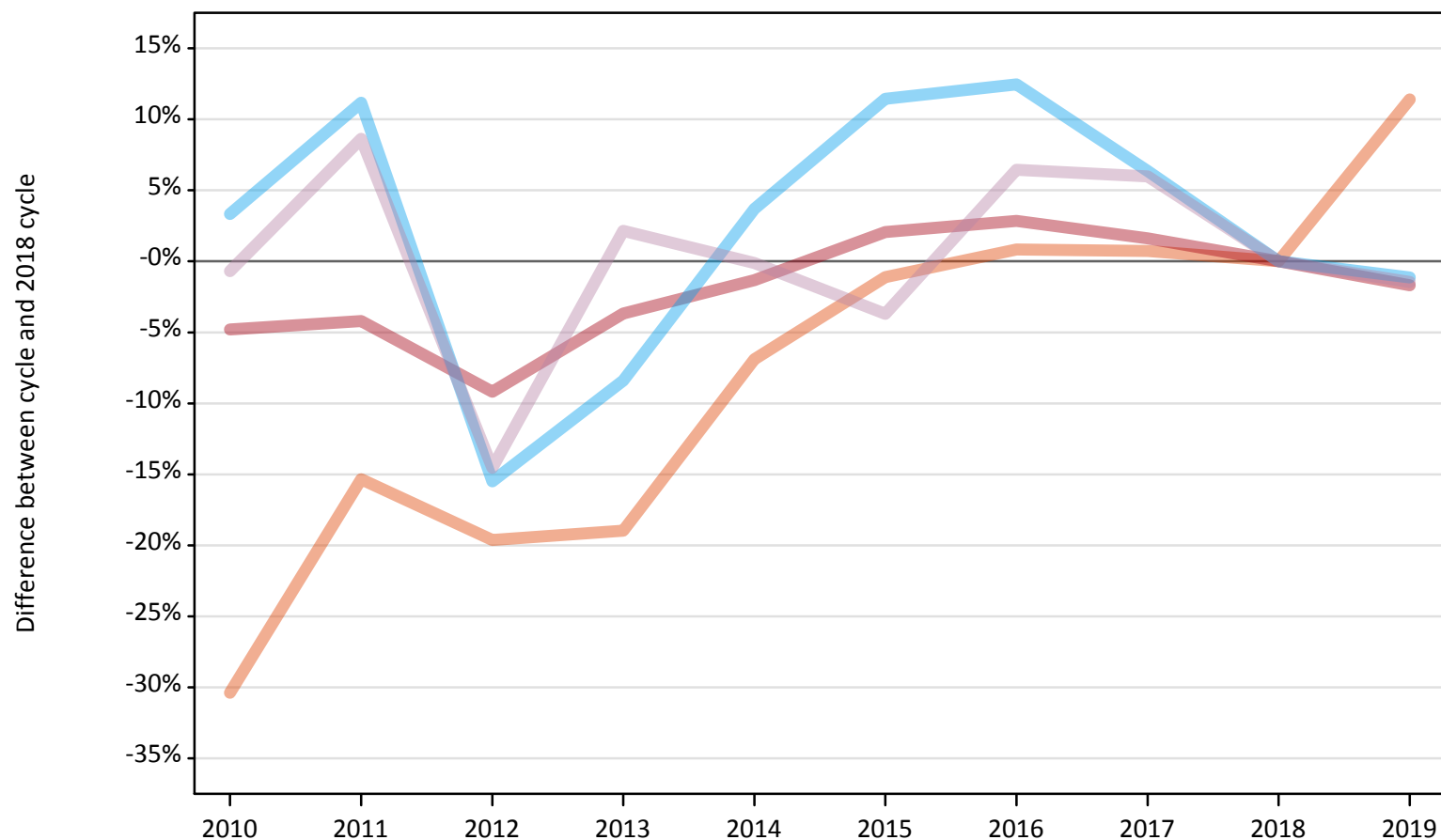
All placed applicants: difference between cycle and 2018 cycle

Applicant type	Status	2010	2011	2012	2013	2014	2015	2016	2017	2018	2019
All applicants	Placed	-7%	-5%	-11%	-5%	-2%	2%	3%	2%	0%	-0%

Note: The percentage change is not recorded in the above table for groups with fewer than 10 placed applicants in that cycle or in the 2018 cycle.

A.6 Placed main scheme applicants from all domiciles: 12 days after A level results day
All Main scheme placed routes (excluding Adjustment): difference between cycle and 2018 cycle

- Placed (Clearing)
- Placed (Firm)
- Placed (Insurance)
- Placed (Other)



Note: The percentage change is not plotted in the above chart for groups with fewer than 30 placed applicants in any one cycle.

A.7 Placed main scheme applicants from all domiciles: 12 days after A level results day

All Main scheme placed routes (excluding Adjustment): applicants at 12 days after A level results day

Applicant type	Status	2010	2011	2012	2013	2014	2015	2016	2017	2018	2019
Main scheme	Placed (Clearing)	27,510	33,450	31,760	32,030	36,790	39,080	39,850	39,810	39,520	44,030
	Placed (Firm)	362,170	364,450	345,510	366,480	375,410	388,350	391,340	386,610	380,470	374,030
	Placed (Insurance)	34,970	37,620	28,600	31,000	35,090	37,710	38,060	35,990	33,840	33,460
	Placed (Other)	13,680	14,960	11,770	14,070	13,760	13,260	14,660	14,600	13,770	13,570

A.8 Placed main scheme applicants from all domiciles: 12 days after A level results day

All Main scheme placed routes (excluding Adjustment): difference between cycle and 2018 cycle

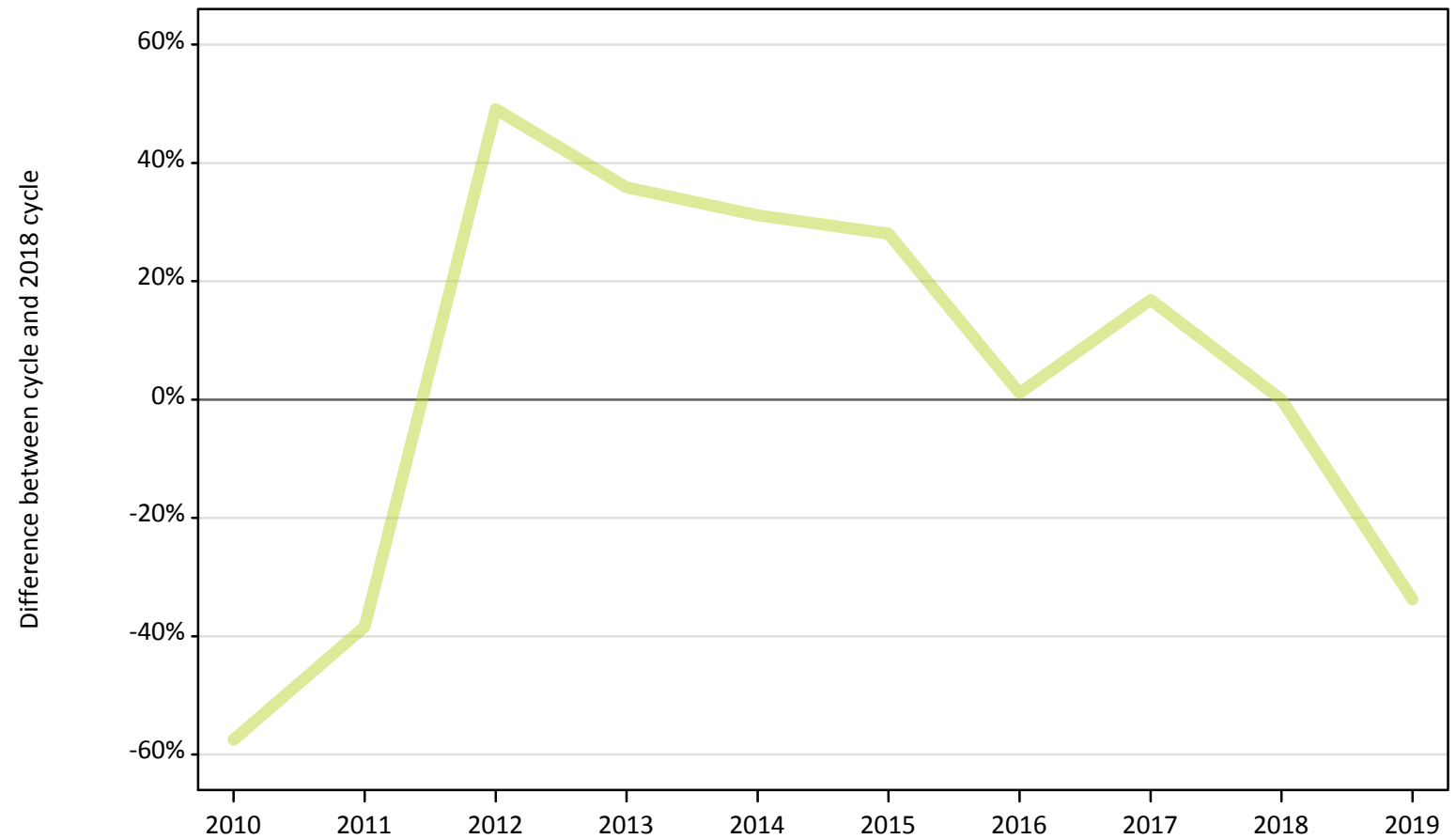
Applicant type	Status	2010	2011	2012	2013	2014	2015	2016	2017	2018	2019
Main scheme	Placed (Clearing)	-30%	-15%	-20%	-19%	-7%	-1%	1%	1%	0%	11%
	Placed (Firm)	-5%	-4%	-9%	-4%	-1%	2%	3%	2%	0%	-2%
	Placed (Insurance)	3%	11%	-15%	-8%	4%	11%	12%	6%	0%	-1%
	Placed (Other)	-1%	9%	-15%	2%	-0%	-4%	6%	6%	0%	-1%

Note: The percentage change is not recorded in the above table for groups with fewer than 10 placed applicants in that cycle or in the 2018 cycle.

A.9 Main scheme applicants placed through adjustment: 12 days after A level results day

Placed through adjustment: difference between cycle and 2018 cycle

Placed (Adjustment)



Note: The percentage change is not plotted in the above chart for groups with fewer than 30 placed applicants in any one cycle.

A.10 Main scheme applicants placed through adjustment: 12 days after A level results day

Placed through adjustment: applicants at 12 days after A level results day

Applicant type	Status	2010	2011	2012	2013	2014	2015	2016	2017	2018	2019
Main scheme	Placed (Adjustment)	390	560	1,360	1,240	1,190	1,160	920	1,060	910	600

A.11 Main scheme applicants placed through adjustment: 12 days after A level results day

Placed through adjustment: difference between cycle and 2018 cycle

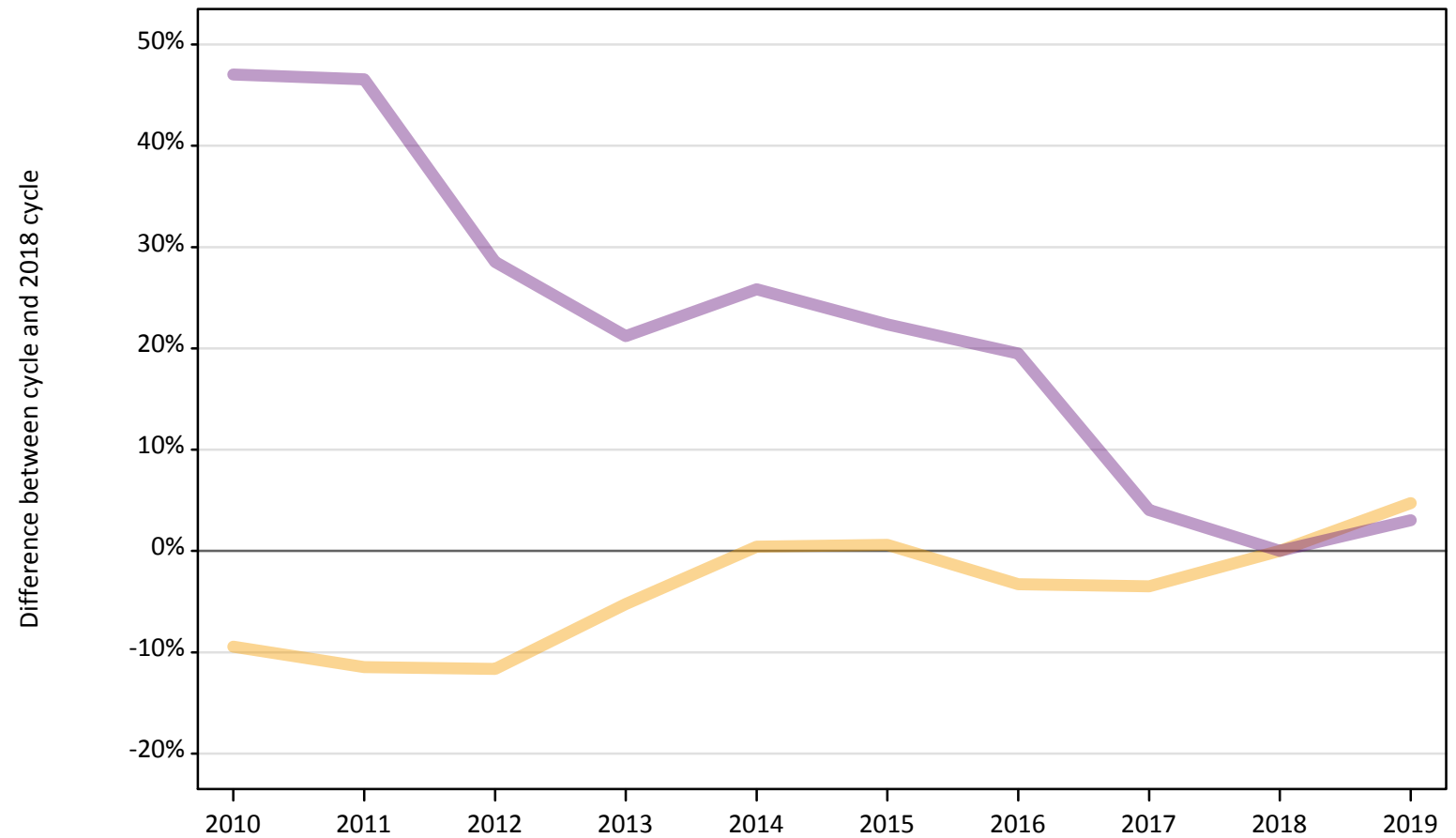
Applicant type	Status	2010	2011	2012	2013	2014	2015	2016	2017	2018	2019
Main scheme	Placed (Adjustment)	-58%	-38%	49%	36%	31%	28%	1%	17%	0%	-34%

Note: The percentage change is not recorded in the above table for groups with fewer than 10 placed applicants in that cycle or in the 2018 cycle.

A.12 Main scheme applicants not currently placed from all domiciles: 12 days after A level results day

Applicants in unplaced states: difference between cycle and 2018 cycle

— Holding offer
— Free to be placed in Clearing



Note: The percentage change is not plotted in the above chart for groups with fewer than 30 unplaced applicants in any one cycle.

A.13 Main scheme applicants not currently placed from all domiciles: 12 days after A level results day

Applicants in unplaced states: applicants at 12 days after A level results day

Applicant type	Status	2010	2011	2012	2013	2014	2015	2016	2017	2018	2019
Main scheme	Holding offer	37,370	36,540	36,460	39,110	41,440	41,510	39,910	39,830	41,270	43,220
	Free to be placed in Clearing	171,420	170,850	149,850	141,310	146,680	142,660	139,280	121,290	116,570	120,100

A.14 Main scheme applicants not currently placed from all domiciles: 12 days after A level results day

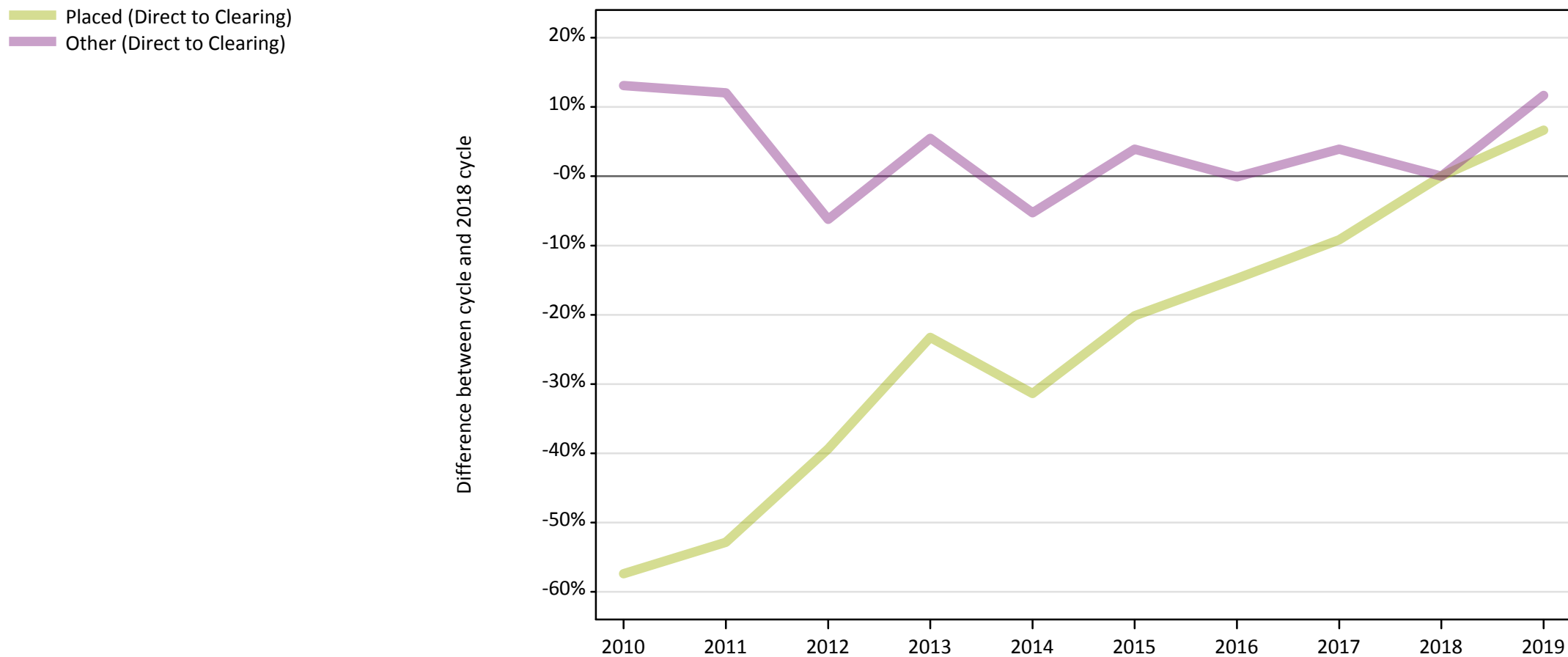
Applicants in unplaced states: difference between cycle and 2018 cycle

Applicant type	Status	2010	2011	2012	2013	2014	2015	2016	2017	2018	2019
Main scheme	Holding offer	-9%	-11%	-12%	-5%	0%	1%	-3%	-3%	0%	5%
	Free to be placed in Clearing	47%	47%	29%	21%	26%	22%	19%	4%	0%	3%

Note: The percentage change is not recorded in the above table for groups with fewer than 10 unplaced applicants in that cycle or in the 2018 cycle.

A.15 Direct to Clearing applicants from all domiciles: 12 days after A level results day

Direct to Clearing: difference between cycle and 2018 cycle



Note: The percentage change is not plotted in the above chart for groups with fewer than 30 placed applicants in any one cycle.

A.16 Direct to Clearing applicants from all domiciles: 12 days after A level results day

Direct to Clearing 12 days after A level results day

Applicant type	Status	2010	2011	2012	2013	2014	2015	2016	2017	2018	2019
Direct to Clearing	Placed (Direct to Clearing)	4,140	4,580	5,890	7,450	6,660	7,750	8,270	8,820	9,710	10,350
	Other (Direct to Clearing)	8,880	8,800	7,370	8,290	7,440	8,160	7,850	8,160	7,860	8,770

A.17 Direct to Clearing applicants from all domiciles: 12 days after A level results day

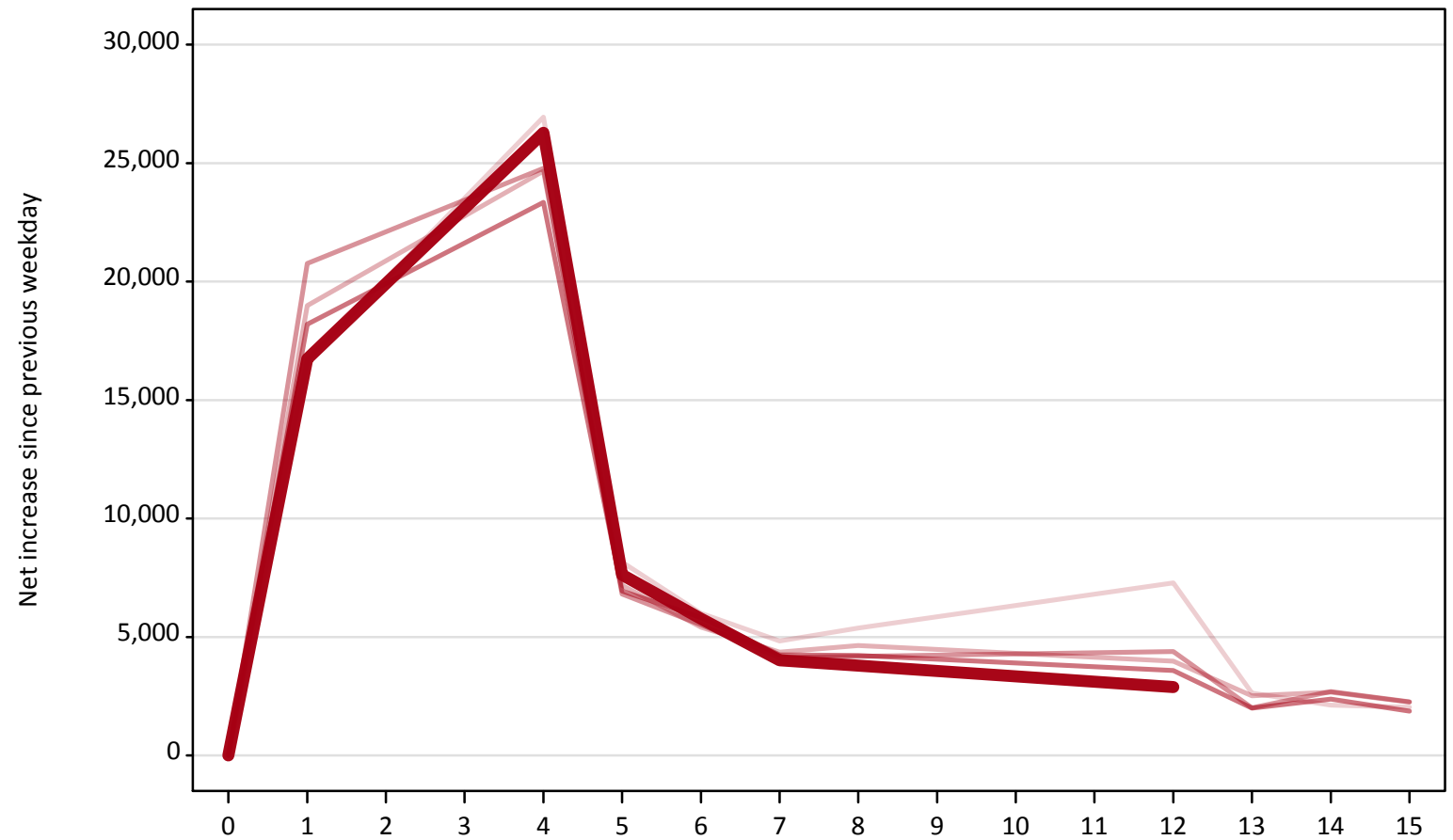
Direct to Clearing: difference between cycle and 2018 cycle

Applicant type	Status	2010	2011	2012	2013	2014	2015	2016	2017	2018	2019
Direct to Clearing	Placed (Direct to Clearing)	-57%	-53%	-39%	-23%	-31%	-20%	-15%	-9%	0%	7%
	Other (Direct to Clearing)	13%	12%	-6%	5%	-5%	4%	-0%	4%	0%	12%

Note: The percentage change is not recorded in the above table for groups with fewer than 10 placed applicants in that cycle or in the 2018 cycle.

A.18 All Placed: Daily net change (from all domiciles)
Net increase since previous weekday (2019 cycle up to 12 days after A level results day)

- 2015
- 2016
- 2017
- 2018
- 2019**

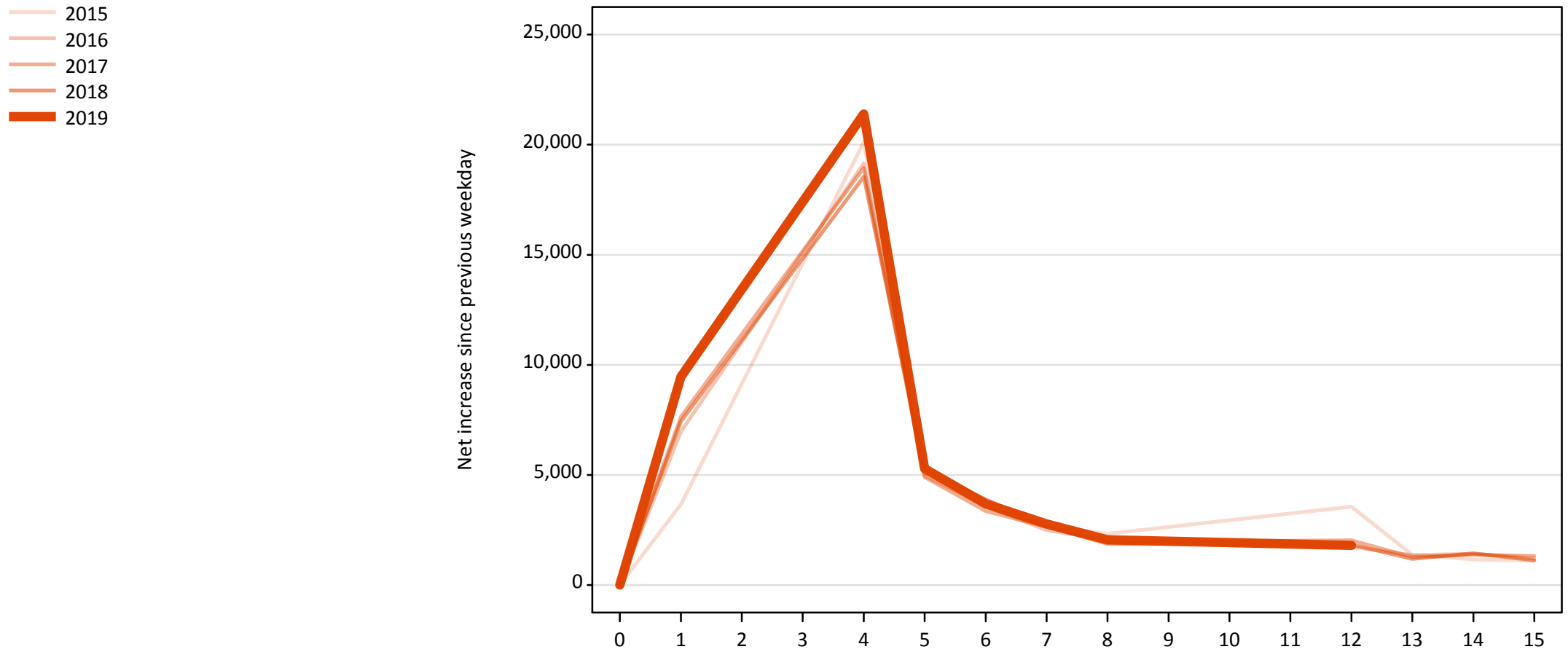


A.19 All Placed: Daily net change (from all domiciles)

Net increase since previous weekday (2019 cycle up to 12 days after A level results day)

Applicant status, days since A level results day		2015	2016	2017	2018	2019
All Placed	0	0	0	0	0	0
	1	16,680	18,990	20,770	18,200	16,740
	4	26,940	24,670	24,790	23,340	26,280
	5	8,160	7,170	6,810	6,940	7,620
	6	6,000	5,410	5,510	5,820	5,770
	7	4,830	4,350	4,140	4,240	4,010
	8	5,370	4,640	4,190	4,220	3,790
	12	7,280	3,980	4,380	3,590	2,880
	13	2,630	2,510	2,010	2,000	
	14	2,120	2,660	2,700	2,370	
	15	2,030	2,250	2,260	1,870	

A.20 Placed through Clearing only: Daily net change (from all domiciles)
Net increase since previous weekday (2019 cycle up to 12 days after A level results day)

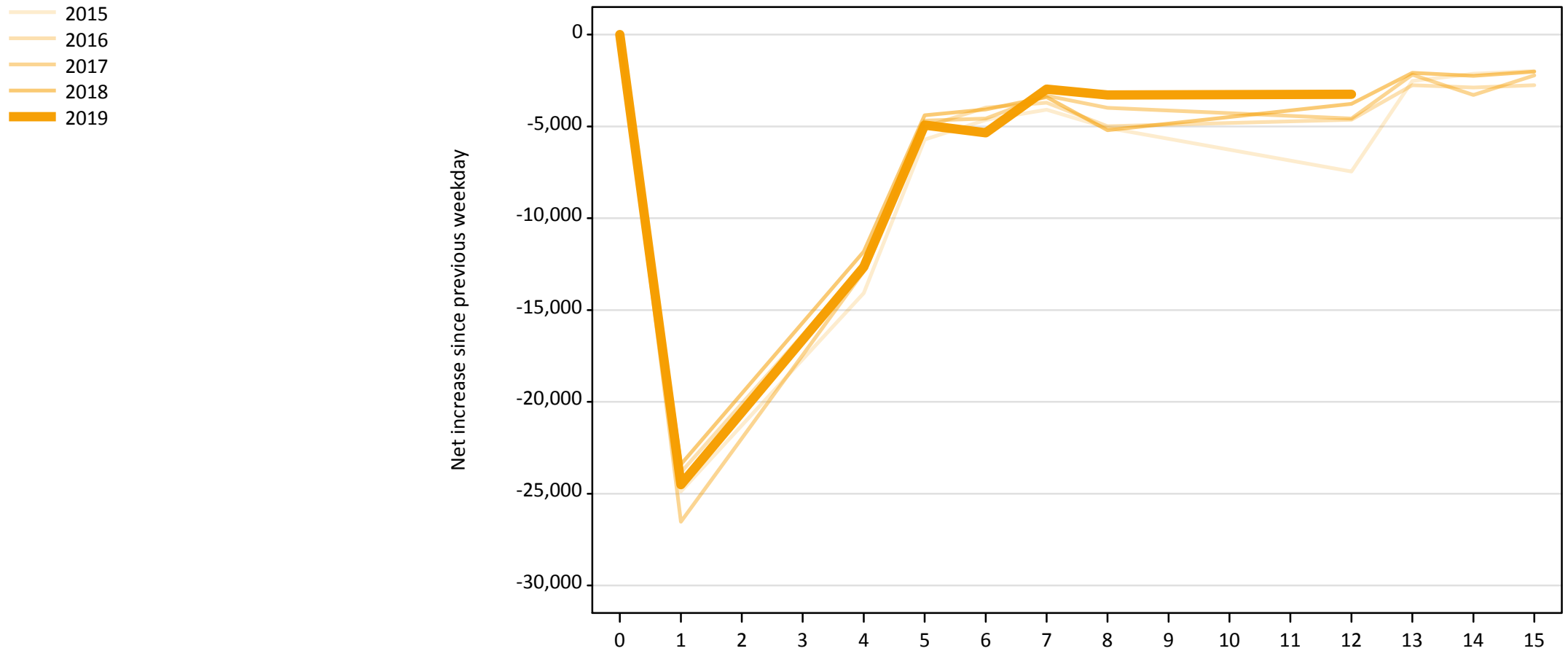


A.21 Placed through Clearing only: Daily net change (from all domiciles)

Net increase since previous weekday (2019 cycle up to 12 days after A level results day)

Applicant status, days since A level results day		2015	2016	2017	2018	2019
Placed through Clearing only	0	0	0	0	0	0
	1	3,660	6,970	7,640	7,440	9,460
	4	20,110	19,140	18,940	18,550	21,390
	5	5,290	4,960	4,910	5,250	5,280
	6	3,560	3,590	3,360	3,890	3,680
	7	2,680	2,480	2,640	2,660	2,770
	8	2,330	2,050	1,950	1,880	2,050
	12	3,550	1,740	2,030	1,840	1,800
	13	1,370	1,350	1,270	1,190	
	14	1,160	1,420	1,370	1,440	
	15	1,100	1,210	1,320	1,130	

A.22 Holding Offer: Daily net change (from all domiciles)
Net increase since previous weekday (2019 cycle up to 12 days after A level results day)



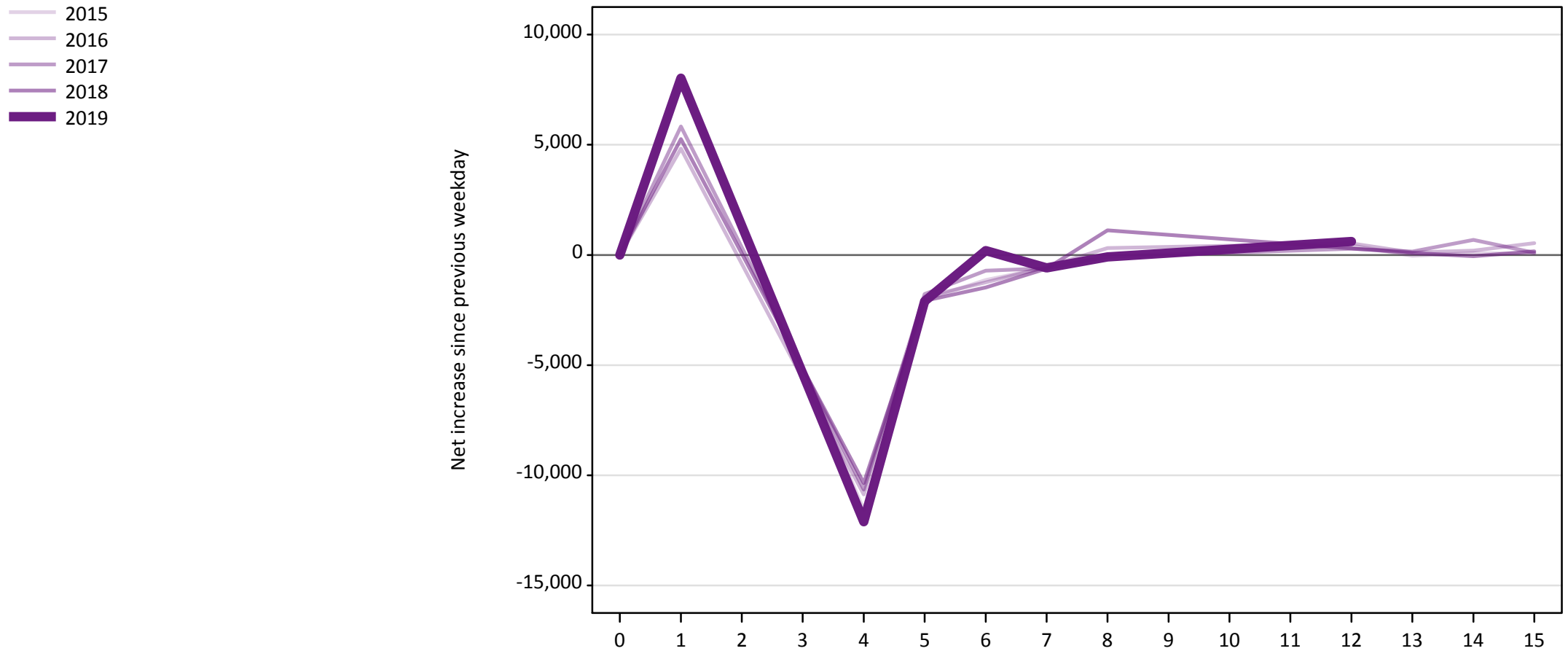
A.23 Holding Offer: Daily net change (from all domiciles)

Net increase since previous weekday (2019 cycle up to 12 days after A level results day)

Applicant status, days since A level results day		2015	2016	2017	2018	2019
Holding Offer	0	0	0	0	0	0
	1	-24,880	-23,840	-26,530	-23,410	-24,510
	4	-14,080	-12,600	-12,900	-11,810	-12,650
	5	-5,720	-5,030	-4,680	-4,390	-4,930
	6	-4,650	-3,970	-4,580	-4,080	-5,340
	7	-4,090	-3,700	-3,330	-3,400	-2,970
	8	-5,080	-4,990	-3,990	-5,210	-3,290
	12	-7,460	-4,640	-4,580	-3,770	-3,260
	13	-2,520	-2,760	-2,180	-2,080	
	14	-2,130	-2,880	-3,280	-2,250	
	15	-1,980	-2,760	-2,230	-2,020	

A.24 Free to be placed in Clearing: Daily net change (from all domiciles)

Net increase since previous weekday (2019 cycle up to 12 days after A level results day)



A.25 Free to be placed in Clearing: Daily net change (from all domiciles)

Net increase since previous weekday (2019 cycle up to 12 days after A level results day)

Applicant status, days since A level results day		2015	2016	2017	2018	2019
Free to be placed in Clearing	0	0	0	0	0	0
	1	8,010	4,820	5,830	5,260	8,020
	4	-11,570	-10,870	-10,650	-10,350	-12,110
	5	-2,040	-1,900	-1,780	-2,080	-2,110
	6	-1,130	-1,250	-710	-1,480	200
	7	-570	-540	-610	-620	-590
	8	-80	310	-80	1,120	-90
	12	430	530	280	290	610
	13	-40	120	150	90	
	14	80	200	680	-60	
	15	60	530	100	160	