

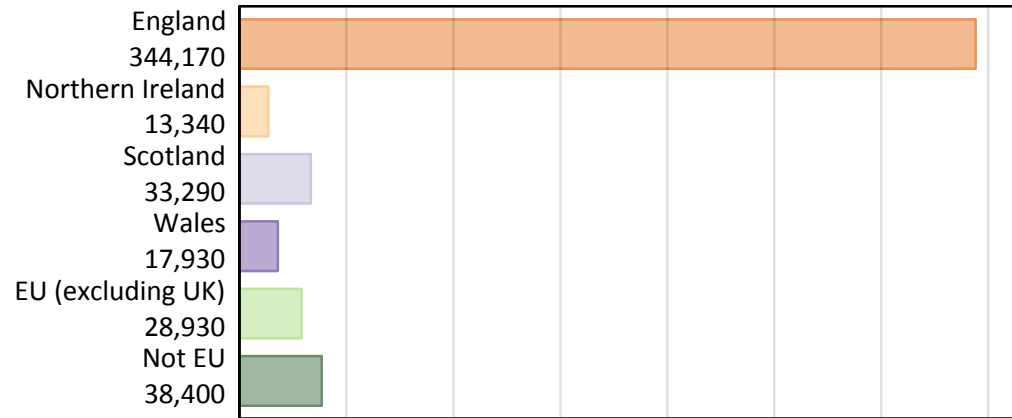
Daily Clearing Analysis: Country

Analysis at 00:05 on Tuesday 27 August 2019 (12 days after A level results day)

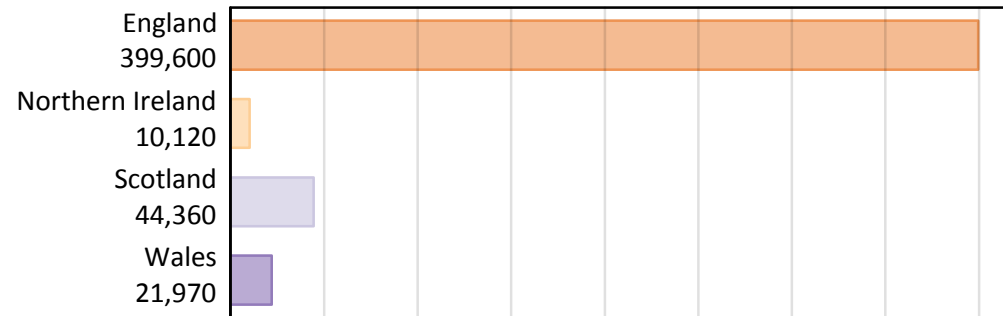
B.1 Placed applicants by country of provider and domicile, 2019 cycle

Domicile of applicant	Country of provider				
	England	Northern Ireland	Scotland	Wales	UK
England	329,830	300	4,350	9,690	344,170
Northern Ireland	3,180	9,160	870	130	13,340
Scotland	1,480	20	31,760	40	33,290
Wales	7,730	10	130	10,050	17,930
EU (excluding UK)	23,730	400	3,870	930	28,930
Not EU	33,650	240	3,390	1,130	38,400
All	399,600	10,120	44,360	21,970	476,050

B.2 Placed applicants by domicile group



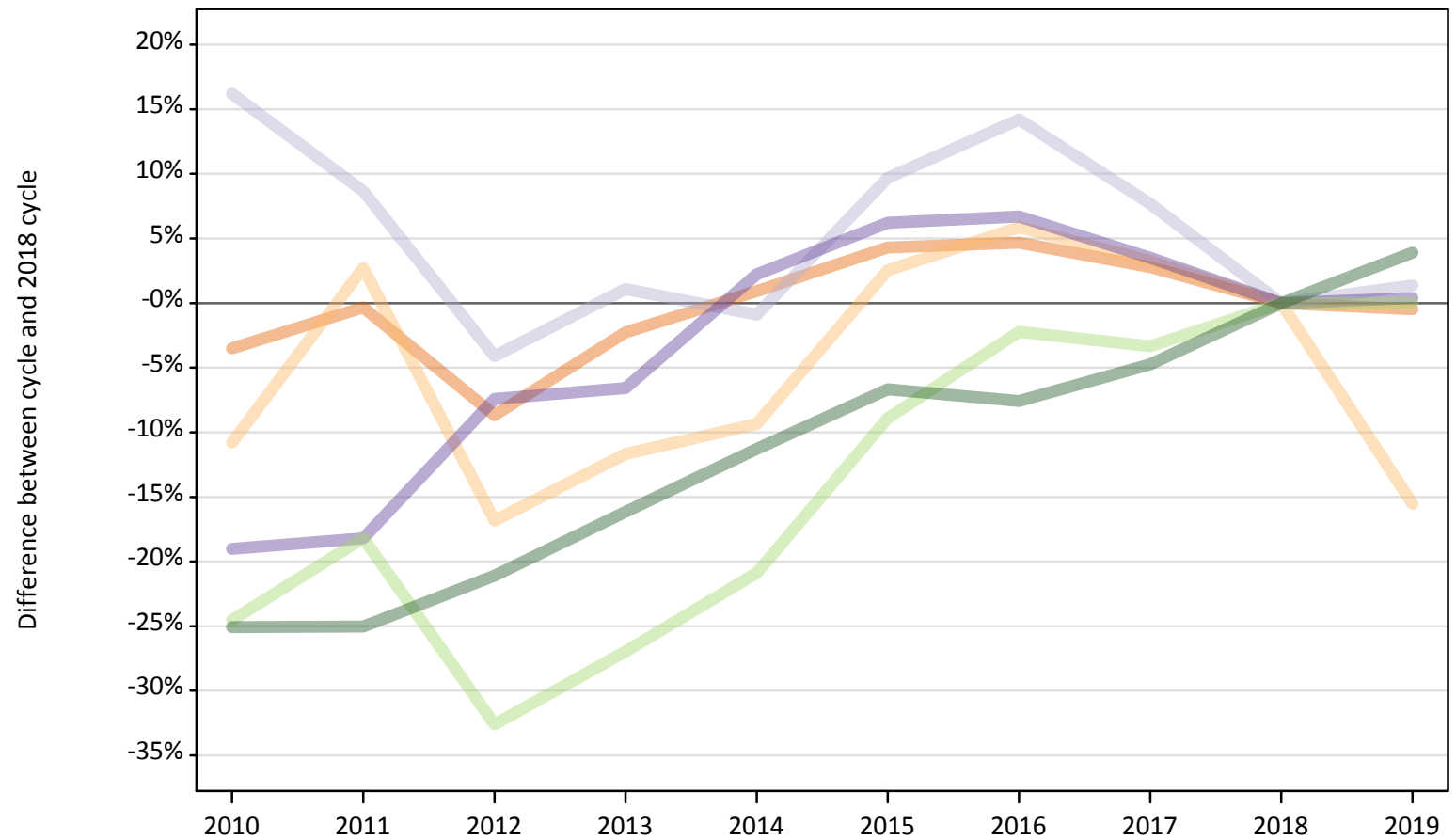
B.3 Placed applicants by country of provider



B.4 Placed applicants at 12 days after A level results day: providers in England

Selected applicant domiciles: difference between cycle and 2018 cycle (at 12 days after A level results day)

- England
- Northern Ireland
- Scotland
- Wales
- EU (excluding UK)
- Not EU



Note: The percentage change is not plotted in the above chart for groups with fewer than 30 placed applicants in any one cycle.

B.5 Placed applicants at 12 days after A level results day: providers in England

Placed applicants by domicile (at 12 days after A level results day)

Domicile of applicant	2010	2011	2012	2013	2014	2015	2016	2017	2018	2019
England	319,820	330,360	302,680	323,920	334,490	345,690	346,910	340,640	331,430	329,830
Northern Ireland	3,360	3,860	3,130	3,320	3,410	3,860	3,980	3,880	3,760	3,180
Scotland	1,690	1,580	1,400	1,470	1,440	1,600	1,660	1,570	1,460	1,480
Wales	6,240	6,300	7,130	7,200	7,880	8,180	8,220	7,980	7,700	7,730
EU (excluding UK)	17,900	19,410	15,990	17,330	18,770	21,620	23,200	22,930	23,730	23,730
Not EU	24,260	24,280	25,550	27,150	28,720	30,220	29,920	30,850	32,380	33,650

B.6 Placed applicants at 12 days after A level results day: providers in England

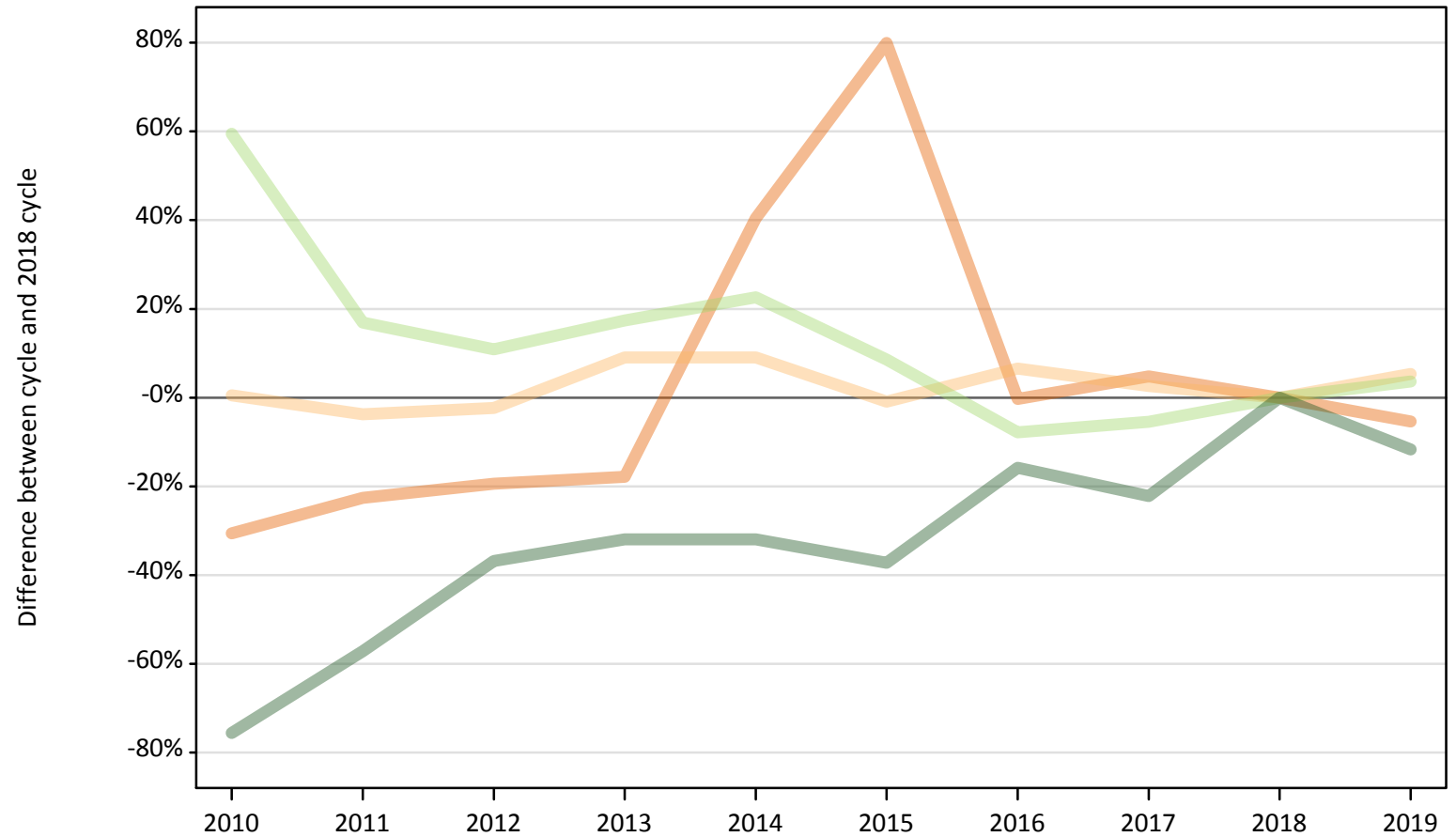
Selected applicant domiciles: difference between cycle and 2018 cycle (at 12 days after A level results day)

Domicile of applicant	2010	2011	2012	2013	2014	2015	2016	2017	2018	2019
England	-4%	-0%	-9%	-2%	1%	4%	5%	3%	0%	-0%
Northern Ireland	-11%	3%	-17%	-12%	-9%	3%	6%	3%	0%	-16%
Scotland	16%	9%	-4%	1%	-1%	10%	14%	8%	0%	1%
Wales	-19%	-18%	-7%	-7%	2%	6%	7%	4%	0%	0%
EU (excluding UK)	-25%	-18%	-33%	-27%	-21%	-9%	-2%	-3%	0%	0%
Not EU	-25%	-25%	-21%	-16%	-11%	-7%	-8%	-5%	0%	4%

Note: The percentage change is not recorded in the above table for groups with fewer than 10 placed applicants in that cycle or in the 2018 cycle.

B.7 Placed applicants at 12 days after A level results day: providers in Northern Ireland
Selected applicant domiciles: difference between cycle and 2018 cycle (at 12 days after A level results day)

- England
- Northern Ireland
- Scotland
- Wales
- EU (excluding UK)
- Not EU



Note: The percentage change is not plotted in the above chart for groups with fewer than 30 placed applicants in any one cycle.

B.8 Placed applicants at 12 days after A level results day: providers in Northern Ireland

Placed applicants by domicile (at 12 days after A level results day)

Domicile of applicant	2010	2011	2012	2013	2014	2015	2016	2017	2018	2019
England	220	240	250	260	440	570	310	330	310	300
Northern Ireland	8,740	8,370	8,500	9,480	9,480	8,620	9,260	8,920	8,700	9,160
Scotland	20	20	30	10	20	20	20	30	30	20
Wales	10	10	0	10	10	10	10	10	10	10
EU (excluding UK)	610	450	430	450	470	420	360	360	390	400
Not EU	70	110	170	180	180	170	220	210	270	240

B.9 Placed applicants at 12 days after A level results day: providers in Northern Ireland

Selected applicant domiciles: difference between cycle and 2018 cycle (at 12 days after A level results day)

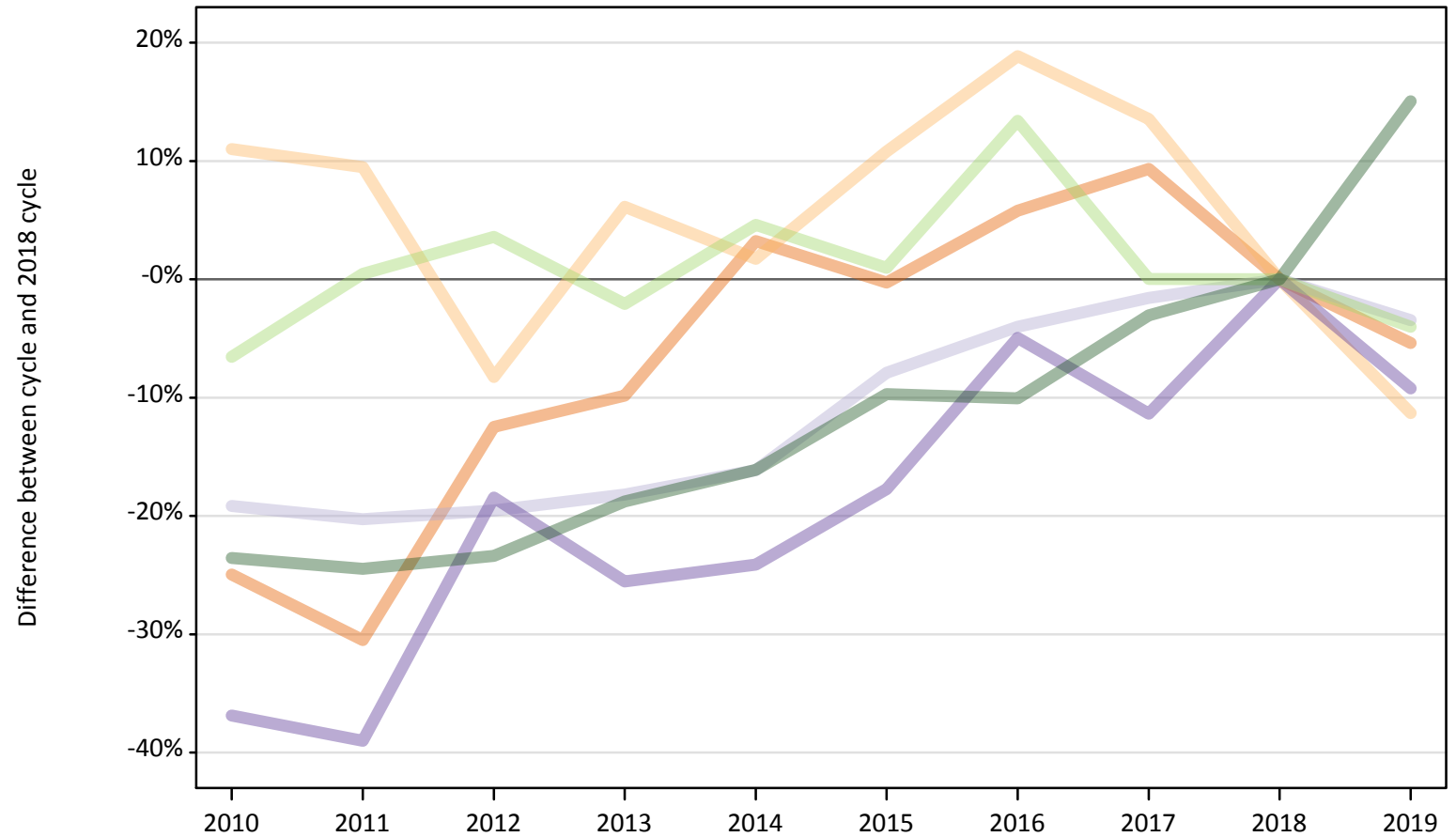
Domicile of applicant	2010	2011	2012	2013	2014	2015	2016	2017	2018	2019
England	-31%	-23%	-19%	-18%	40%	80%	-0%	5%	0%	-5%
Northern Ireland	1%	-4%	-2%	9%	9%	-1%	7%	3%	0%	5%
Scotland	-12%	-31%	0%	-50%	-35%	-23%	-31%	19%	0%	-27%
Wales						30%	10%	40%	0%	20%
EU (excluding UK)	59%	17%	11%	17%	23%	9%	-8%	-5%	0%	4%
Not EU	-76%	-57%	-37%	-32%	-32%	-37%	-16%	-22%	0%	-12%

Note: The percentage change is not recorded in the above table for groups with fewer than 10 placed applicants in that cycle or in the 2018 cycle.

B.10 Placed applicants at 12 days after A level results day: providers in Scotland

Selected applicant domiciles: difference between cycle and 2018 cycle (at 12 days after A level results day)

- England
- Northern Ireland
- Scotland
- Wales
- EU (excluding UK)
- Not EU



Note: The percentage change is not plotted in the above chart for groups with fewer than 30 placed applicants in any one cycle.

B.11 Placed applicants at 12 days after A level results day: providers in Scotland

Placed applicants by domicile (at 12 days after A level results day)

Domicile of applicant	2010	2011	2012	2013	2014	2015	2016	2017	2018	2019
England	3,450	3,190	4,020	4,140	4,740	4,580	4,860	5,020	4,600	4,350
Northern Ireland	1,090	1,070	900	1,040	1,000	1,090	1,170	1,110	980	870
Scotland	26,590	26,220	26,460	26,910	27,580	30,300	31,580	32,380	32,890	31,760
Wales	90	90	120	110	110	120	130	130	140	130
EU (excluding UK)	3,770	4,050	4,180	3,950	4,220	4,070	4,570	4,030	4,030	3,870
Not EU	2,250	2,220	2,260	2,390	2,470	2,660	2,650	2,850	2,940	3,390

B.12 Placed applicants at 12 days after A level results day: providers in Scotland

Selected applicant domiciles: difference between cycle and 2018 cycle (at 12 days after A level results day)

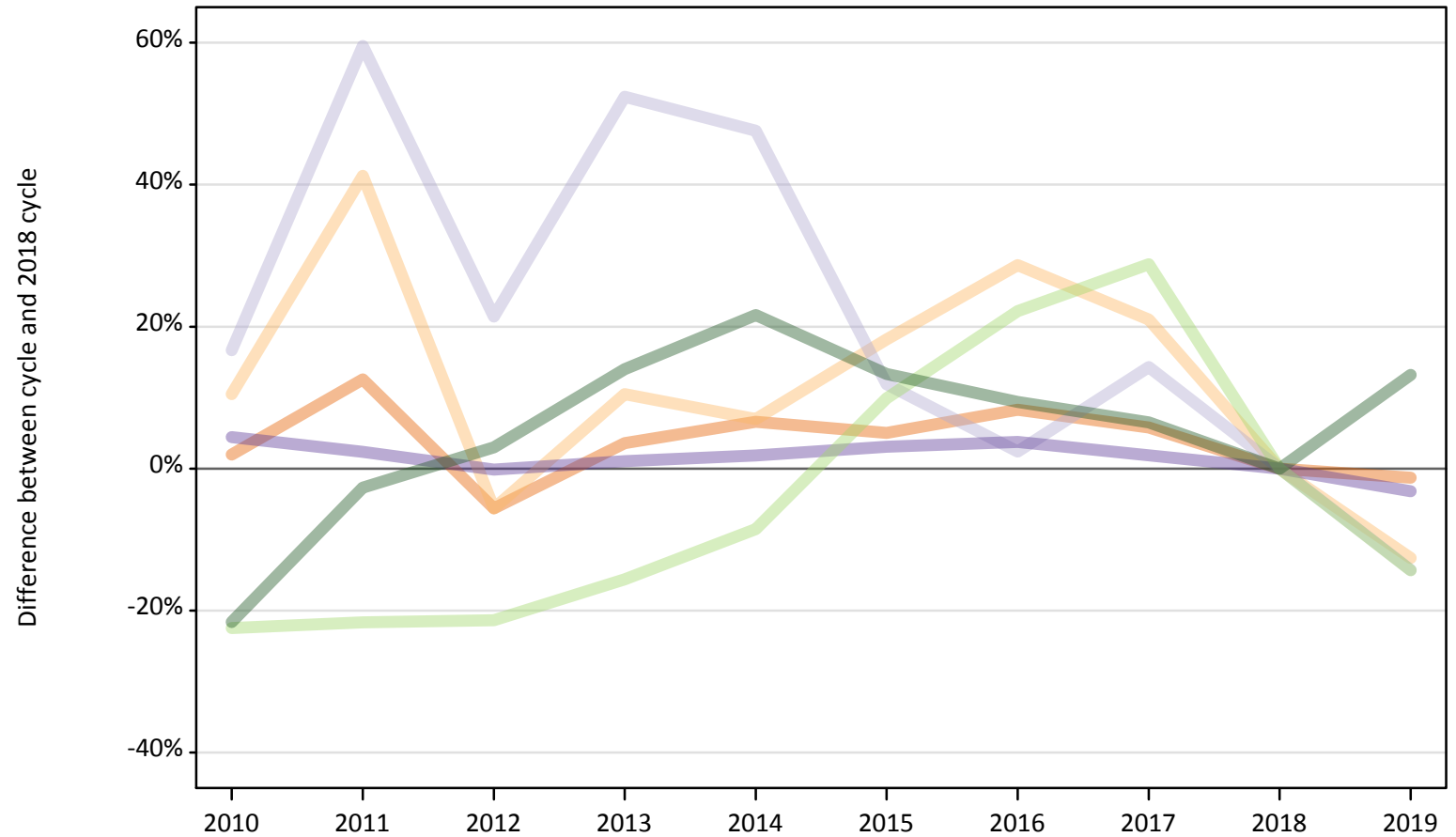
Domicile of applicant	2010	2011	2012	2013	2014	2015	2016	2017	2018	2019
England	-25%	-30%	-12%	-10%	3%	-0%	6%	9%	0%	-5%
Northern Ireland	11%	9%	-8%	6%	2%	11%	19%	14%	0%	-11%
Scotland	-19%	-20%	-20%	-18%	-16%	-8%	-4%	-2%	0%	-3%
Wales	-37%	-39%	-18%	-26%	-24%	-18%	-5%	-11%	0%	-9%
EU (excluding UK)	-7%	0%	4%	-2%	5%	1%	13%	0%	0%	-4%
Not EU	-24%	-24%	-23%	-19%	-16%	-10%	-10%	-3%	0%	15%

Note: The percentage change is not recorded in the above table for groups with fewer than 10 placed applicants in that cycle or in the 2018 cycle.

B.13 Placed applicants at 12 days after A level results day: providers in Wales

Selected applicant domiciles: difference between cycle and 2018 cycle (at 12 days after A level results day)

- England
- Northern Ireland
- Scotland
- Wales
- EU (excluding UK)
- Not EU



Note: The percentage change is not plotted in the above chart for groups with fewer than 30 placed applicants in any one cycle.

B.14 Placed applicants at 12 days after A level results day: providers in Wales

Placed applicants by domicile (at 12 days after A level results day)

Domicile of applicant	2010	2011	2012	2013	2014	2015	2016	2017	2018	2019
England	10,010	11,050	9,270	10,170	10,470	10,310	10,630	10,390	9,820	9,690
Northern Ireland	160	200	140	160	150	170	180	170	140	130
Scotland	50	70	50	60	60	50	40	50	40	40
Wales	10,850	10,630	10,370	10,490	10,580	10,700	10,770	10,580	10,380	10,050
EU (excluding UK)	850	850	860	920	1,000	1,200	1,330	1,400	1,090	930
Not EU	780	970	1,030	1,140	1,220	1,130	1,090	1,060	1,000	1,130

B.15 Placed applicants at 12 days after A level results day: providers in Wales

Selected applicant domiciles: difference between cycle and 2018 cycle (at 12 days after A level results day)

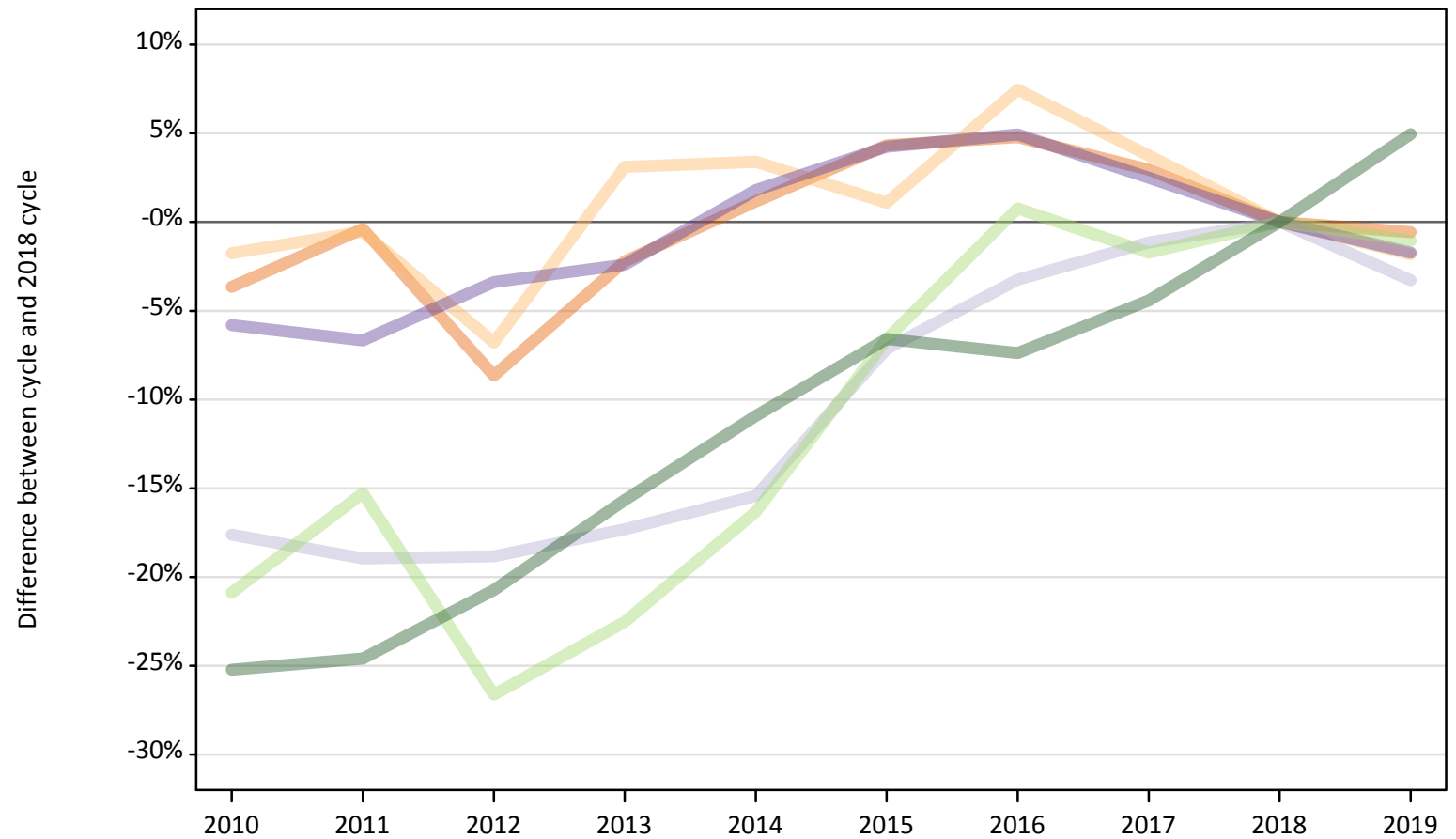
Domicile of applicant	2010	2011	2012	2013	2014	2015	2016	2017	2018	2019
England	2%	13%	-6%	4%	7%	5%	8%	6%	0%	-1%
Northern Ireland	10%	41%	-6%	10%	7%	18%	29%	21%	0%	-13%
Scotland	17%	60%	21%	52%	48%	12%	2%	14%	0%	-14%
Wales	4%	2%	-0%	1%	2%	3%	4%	2%	0%	-3%
EU (excluding UK)	-22%	-22%	-21%	-16%	-9%	10%	22%	29%	0%	-14%
Not EU	-22%	-3%	3%	14%	22%	13%	9%	7%	0%	13%

Note: The percentage change is not recorded in the above table for groups with fewer than 10 placed applicants in that cycle or in the 2018 cycle.

B.16 Placed applicants at 12 days after A level results day: providers in the UK

Selected applicant domiciles: difference between cycle and 2018 cycle (at 12 days after A level results day)

- England
- Northern Ireland
- Scotland
- Wales
- EU (excluding UK)
- Not EU



Note: The percentage change is not plotted in the above chart for groups with fewer than 30 placed applicants in any one cycle.

B.17 Placed applicants at 12 days after A level results day: providers in the UK

Placed applicants by domicile (at 12 days after A level results day)

Domicile of applicant	2010	2011	2012	2013	2014	2015	2016	2017	2018	2019
England	333,490	344,850	316,220	338,490	350,140	361,150	362,720	356,380	346,160	344,170
Northern Ireland	13,340	13,510	12,660	14,000	14,040	13,730	14,600	14,090	13,580	13,340
Scotland	28,360	27,890	27,940	28,460	29,110	31,960	33,300	34,020	34,420	33,290
Wales	17,180	17,020	17,620	17,800	18,570	19,010	19,140	18,690	18,240	17,930
EU (excluding UK)	23,130	24,770	21,450	22,650	24,460	27,300	29,460	28,730	29,230	28,930
Not EU	27,360	27,590	29,000	30,860	32,590	34,180	33,890	34,970	36,590	38,400

B.18 Placed applicants at 12 days after A level results day: providers in the UK

Selected applicant domiciles: difference between cycle and 2018 cycle (at 12 days after A level results day)

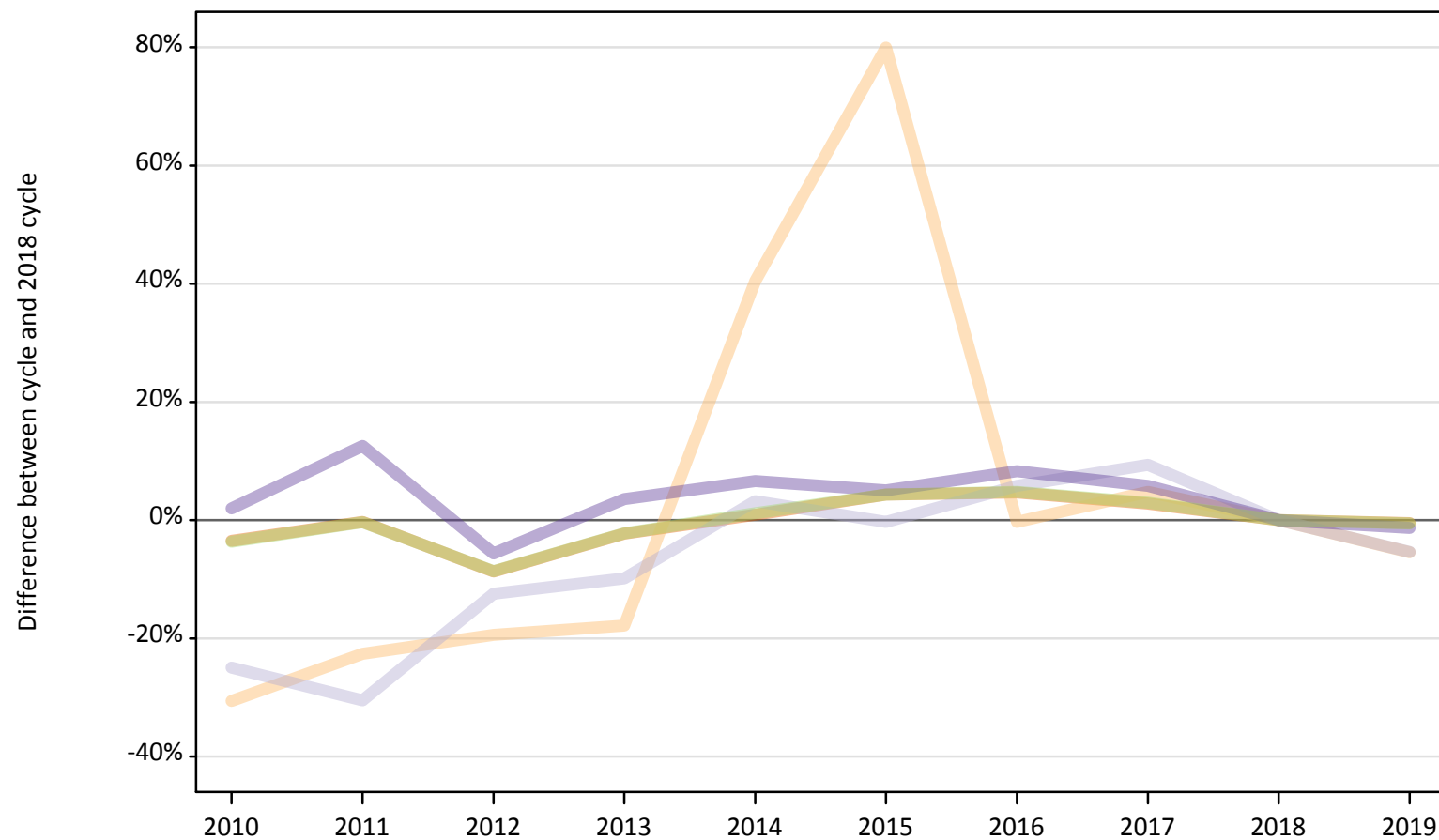
Domicile of applicant	2010	2011	2012	2013	2014	2015	2016	2017	2018	2019
England	-4%	-0%	-9%	-2%	1%	4%	5%	3%	0%	-1%
Northern Ireland	-2%	-1%	-7%	3%	3%	1%	7%	4%	0%	-2%
Scotland	-18%	-19%	-19%	-17%	-15%	-7%	-3%	-1%	0%	-3%
Wales	-6%	-7%	-3%	-2%	2%	4%	5%	3%	0%	-2%
EU (excluding UK)	-21%	-15%	-27%	-23%	-16%	-7%	1%	-2%	0%	-1%
Not EU	-25%	-25%	-21%	-16%	-11%	-7%	-7%	-4%	0%	5%

Note: The percentage change is not recorded in the above table for groups with fewer than 10 placed applicants in that cycle or in the 2018 cycle.

B.19 Placed applicants at 12 days after A level results day: domiciled in England

Selected provider countries: difference between cycle and 2018 cycle (at 12 days after A level results day)

- England
- Northern Ireland
- Scotland
- Wales
- UK



Note: The percentage change is not plotted in the above chart for groups with fewer than 30 placed applicants in any one cycle.

B.20 Placed applicants at 12 days after A level results day: domiciled in England

Placed applicants by provider country (at 12 days after A level results day)

Country of provider	2010	2011	2012	2013	2014	2015	2016	2017	2018	2019
England	319,820	330,360	302,680	323,920	334,490	345,690	346,910	340,640	331,430	329,830
Northern Ireland	220	240	250	260	440	570	310	330	310	300
Scotland	3,450	3,190	4,020	4,140	4,740	4,580	4,860	5,020	4,600	4,350
Wales	10,010	11,050	9,270	10,170	10,470	10,310	10,630	10,390	9,820	9,690
UK	333,490	344,850	316,220	338,490	350,140	361,150	362,720	356,380	346,160	344,170

B.21 Placed applicants at 12 days after A level results day: domiciled in England

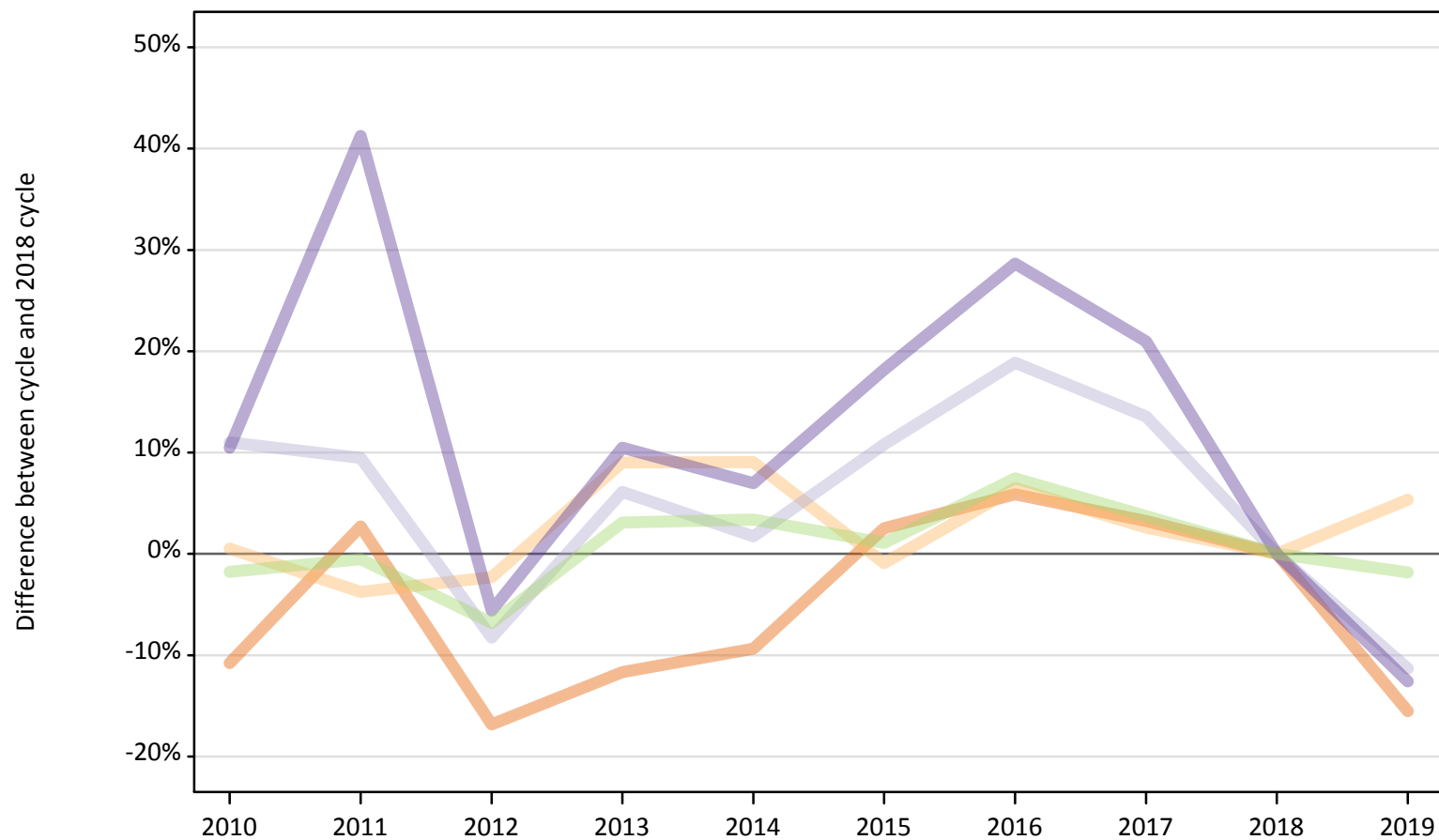
Selected provider countries: difference between cycle and 2018 cycle (at 12 days after A level results day)

Country of provider	2010	2011	2012	2013	2014	2015	2016	2017	2018	2019
England	-4%	-0%	-9%	-2%	1%	4%	5%	3%	0%	-0%
Northern Ireland	-31%	-23%	-19%	-18%	40%	80%	-0%	5%	0%	-5%
Scotland	-25%	-30%	-12%	-10%	3%	-0%	6%	9%	0%	-5%
Wales	2%	13%	-6%	4%	7%	5%	8%	6%	0%	-1%
UK	-4%	-0%	-9%	-2%	1%	4%	5%	3%	0%	-1%

Note: The percentage change is not recorded in the above table for groups with fewer than 10 placed applicants in that cycle or in the 2018 cycle.

B.22 Placed applicants at 12 days after A level results day: domiciled in Northern Ireland
Selected provider countries: difference between cycle and 2018 cycle (at 12 days after A level results day)

- England
- Northern Ireland
- Scotland
- Wales
- UK



Note: The percentage change is not plotted in the above chart for groups with fewer than 30 placed applicants in any one cycle.

B.23 Placed applicants at 12 days after A level results day: domiciled in Northern Ireland

Placed applicants by provider country (at 12 days after A level results day)

Country of provider	2010	2011	2012	2013	2014	2015	2016	2017	2018	2019
England	3,360	3,860	3,130	3,320	3,410	3,860	3,980	3,880	3,760	3,180
Northern Ireland	8,740	8,370	8,500	9,480	9,480	8,620	9,260	8,920	8,700	9,160
Scotland	1,090	1,070	900	1,040	1,000	1,090	1,170	1,110	980	870
Wales	160	200	140	160	150	170	180	170	140	130
UK	13,340	13,510	12,660	14,000	14,040	13,730	14,600	14,090	13,580	13,340

B.24 Placed applicants at 12 days after A level results day: domiciled in Northern Ireland

Selected provider countries: difference between cycle and 2018 cycle (at 12 days after A level results day)

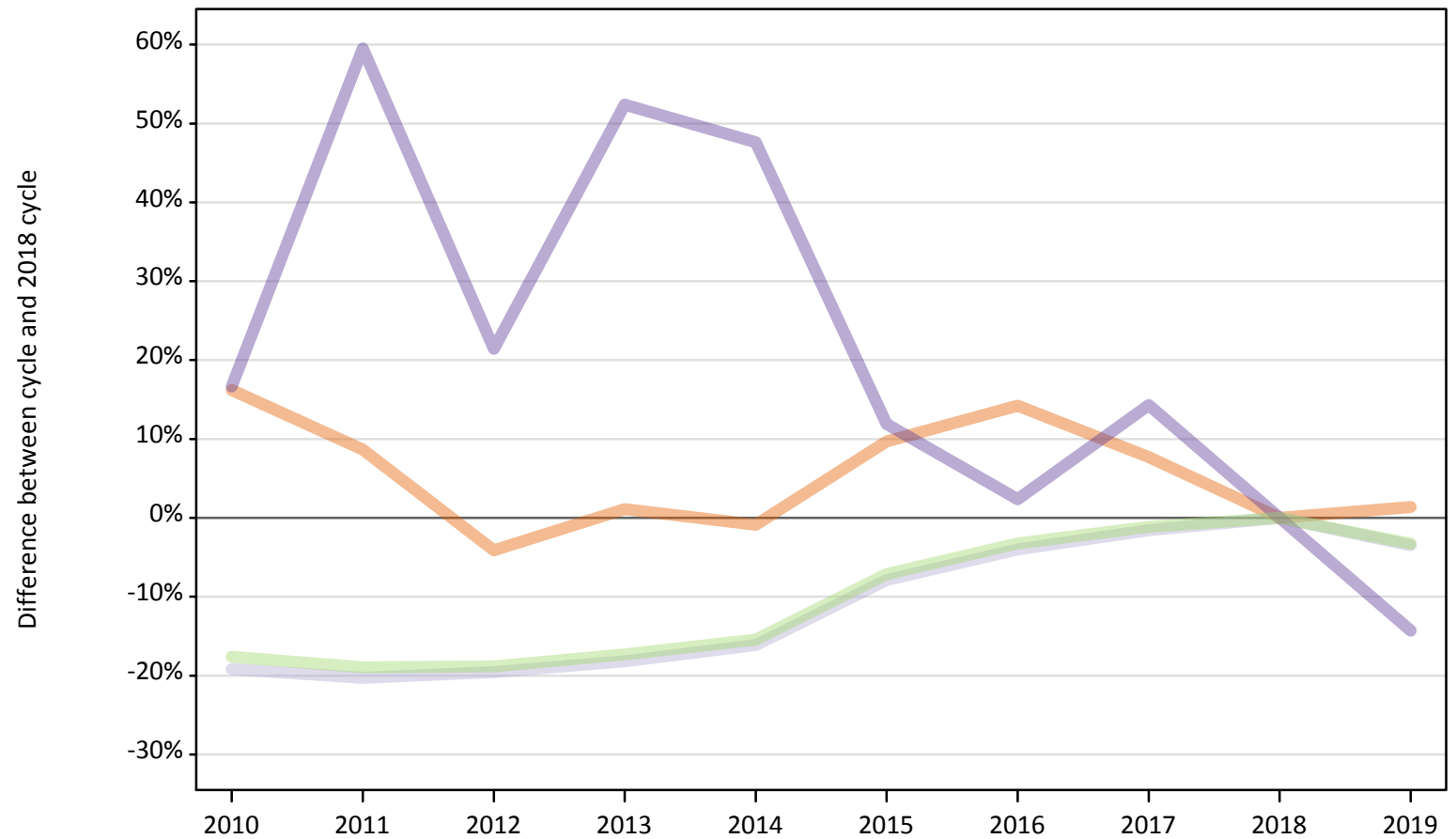
Country of provider	2010	2011	2012	2013	2014	2015	2016	2017	2018	2019
England	-11%	3%	-17%	-12%	-9%	3%	6%	3%	0%	-16%
Northern Ireland	1%	-4%	-2%	9%	9%	-1%	7%	3%	0%	5%
Scotland	11%	9%	-8%	6%	2%	11%	19%	14%	0%	-11%
Wales	10%	41%	-6%	10%	7%	18%	29%	21%	0%	-13%
UK	-2%	-1%	-7%	3%	3%	1%	7%	4%	0%	-2%

Note: The percentage change is not recorded in the above table for groups with fewer than 10 placed applicants in that cycle or in the 2018 cycle.

B.25 Placed applicants at 12 days after A level results day: domiciled in Scotland

Selected provider countries: difference between cycle and 2018 cycle (at 12 days after A level results day)

- England
- Northern Ireland
- Scotland
- Wales
- UK



Note: The percentage change is not plotted in the above chart for groups with fewer than 30 placed applicants in any one cycle.

B.26 Placed applicants at 12 days after A level results day: domiciled in Scotland

Placed applicants by provider country (at 12 days after A level results day)

Country of provider	2010	2011	2012	2013	2014	2015	2016	2017	2018	2019
England	1,690	1,580	1,400	1,470	1,440	1,600	1,660	1,570	1,460	1,480
Northern Ireland	20	20	30	10	20	20	20	30	30	20
Scotland	26,590	26,220	26,460	26,910	27,580	30,300	31,580	32,380	32,890	31,760
Wales	50	70	50	60	60	50	40	50	40	40
UK	28,360	27,890	27,940	28,460	29,110	31,960	33,300	34,020	34,420	33,290

B.27 Placed applicants at 12 days after A level results day: domiciled in Scotland

Selected provider countries: difference between cycle and 2018 cycle (at 12 days after A level results day)

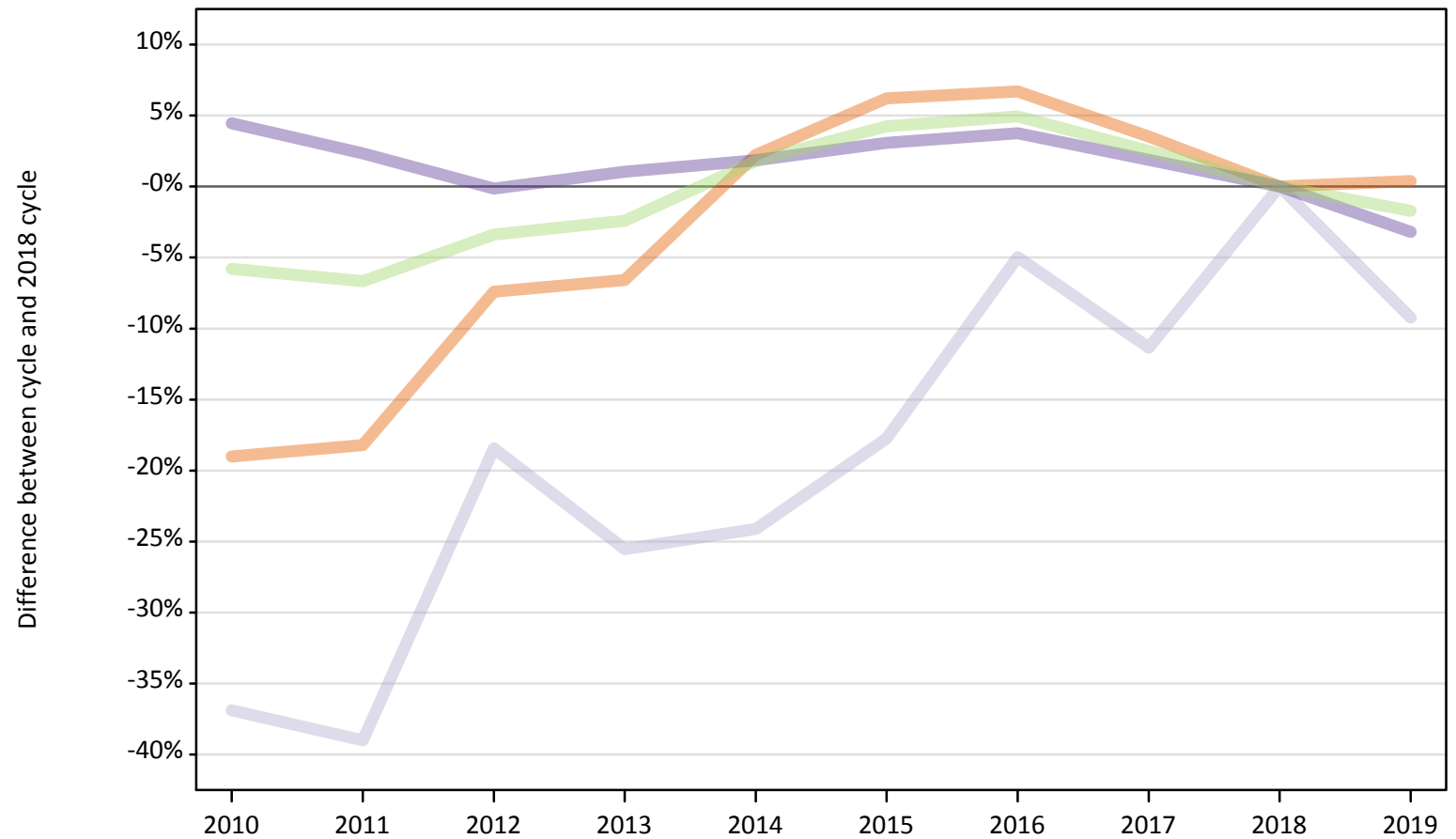
Country of provider	2010	2011	2012	2013	2014	2015	2016	2017	2018	2019
England	16%	9%	-4%	1%	-1%	10%	14%	8%	0%	1%
Northern Ireland	-12%	-31%	0%	-50%	-35%	-23%	-31%	19%	0%	-27%
Scotland	-19%	-20%	-20%	-18%	-16%	-8%	-4%	-2%	0%	-3%
Wales	17%	60%	21%	52%	48%	12%	2%	14%	0%	-14%
UK	-18%	-19%	-19%	-17%	-15%	-7%	-3%	-1%	0%	-3%

Note: The percentage change is not recorded in the above table for groups with fewer than 10 placed applicants in that cycle or in the 2018 cycle.

B.28 Placed applicants at 12 days after A level results day: domiciled in Wales

Selected provider countries: difference between cycle and 2018 cycle (at 12 days after A level results day)

- England
- Northern Ireland
- Scotland
- Wales
- UK



Note: The percentage change is not plotted in the above chart for groups with fewer than 30 placed applicants in any one cycle.

B.29 Placed applicants at 12 days after A level results day: domiciled in Wales

Placed applicants by provider country (at 12 days after A level results day)

Country of provider	2010	2011	2012	2013	2014	2015	2016	2017	2018	2019
England	6,240	6,300	7,130	7,200	7,880	8,180	8,220	7,980	7,700	7,730
Northern Ireland	10	10	0	10	10	10	10	10	10	10
Scotland	90	90	120	110	110	120	130	130	140	130
Wales	10,850	10,630	10,370	10,490	10,580	10,700	10,770	10,580	10,380	10,050
UK	17,180	17,020	17,620	17,800	18,570	19,010	19,140	18,690	18,240	17,930

B.30 Placed applicants at 12 days after A level results day: domiciled in Wales

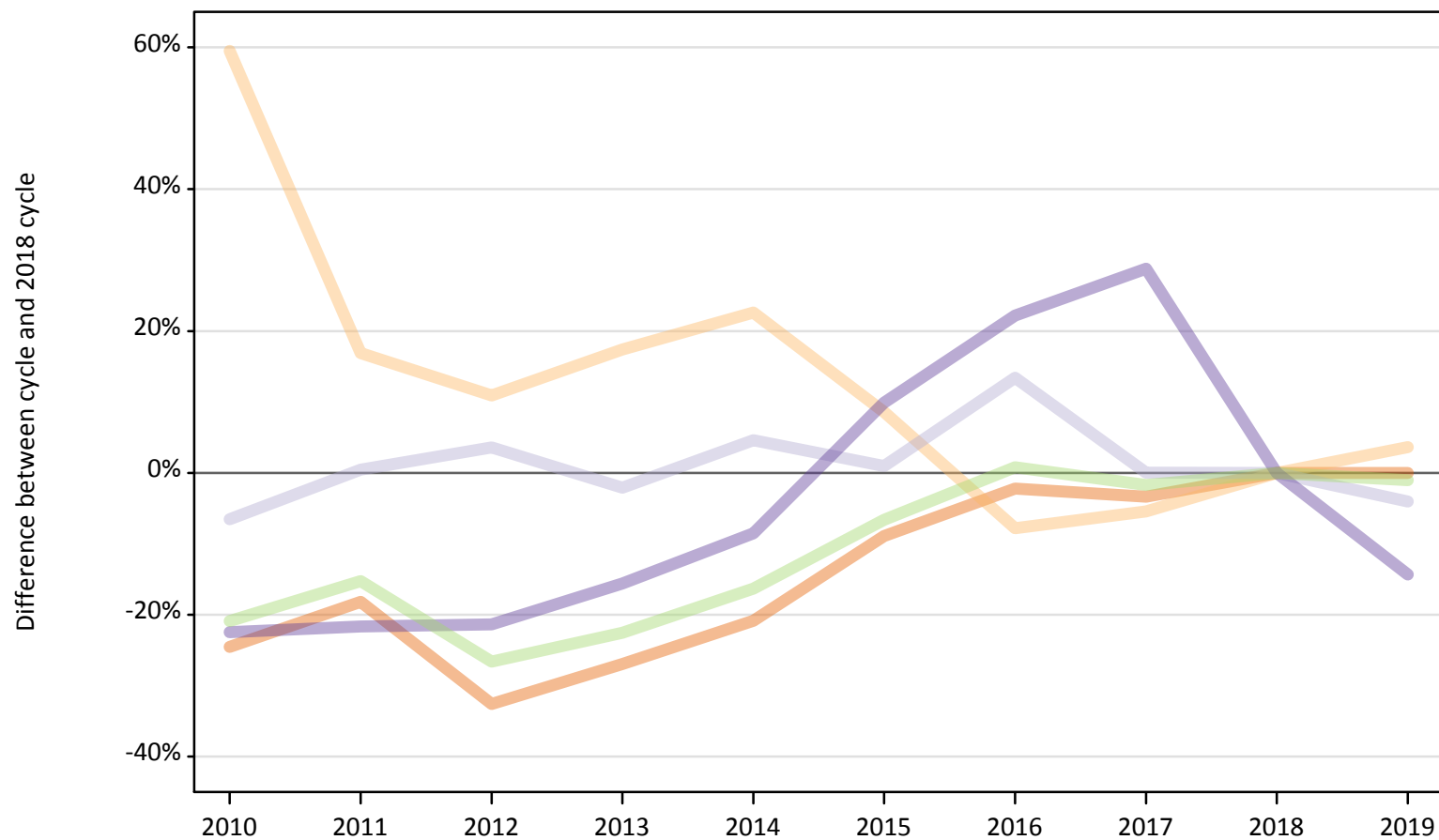
Selected provider countries: difference between cycle and 2018 cycle (at 12 days after A level results day)

Country of provider	2010	2011	2012	2013	2014	2015	2016	2017	2018	2019
England	-19%	-18%	-7%	-7%	2%	6%	7%	4%	0%	0%
Northern Ireland						30%	10%	40%	0%	20%
Scotland	-37%	-39%	-18%	-26%	-24%	-18%	-5%	-11%	0%	-9%
Wales	4%	2%	-0%	1%	2%	3%	4%	2%	0%	-3%
UK	-6%	-7%	-3%	-2%	2%	4%	5%	3%	0%	-2%

Note: The percentage change is not recorded in the above table for groups with fewer than 10 placed applicants in that cycle or in the 2018 cycle.

B.31 Placed applicants at 12 days after A level results day: domiciled in EU (excluding UK)
Selected provider countries: difference between cycle and 2018 cycle (at 12 days after A level results day)

- England
- Northern Ireland
- Scotland
- Wales
- UK



Note: The percentage change is not plotted in the above chart for groups with fewer than 30 placed applicants in any one cycle.

B.32 Placed applicants at 12 days after A level results day: domiciled in EU (excluding UK)

Placed applicants by provider country (at 12 days after A level results day)

Country of provider	2010	2011	2012	2013	2014	2015	2016	2017	2018	2019
England	17,900	19,410	15,990	17,330	18,770	21,620	23,200	22,930	23,730	23,730
Northern Ireland	610	450	430	450	470	420	360	360	390	400
Scotland	3,770	4,050	4,180	3,950	4,220	4,070	4,570	4,030	4,030	3,870
Wales	850	850	860	920	1,000	1,200	1,330	1,400	1,090	930
UK	23,130	24,770	21,450	22,650	24,460	27,300	29,460	28,730	29,230	28,930

B.33 Placed applicants at 12 days after A level results day: domiciled in EU (excluding UK)

Selected provider countries: difference between cycle and 2018 cycle (at 12 days after A level results day)

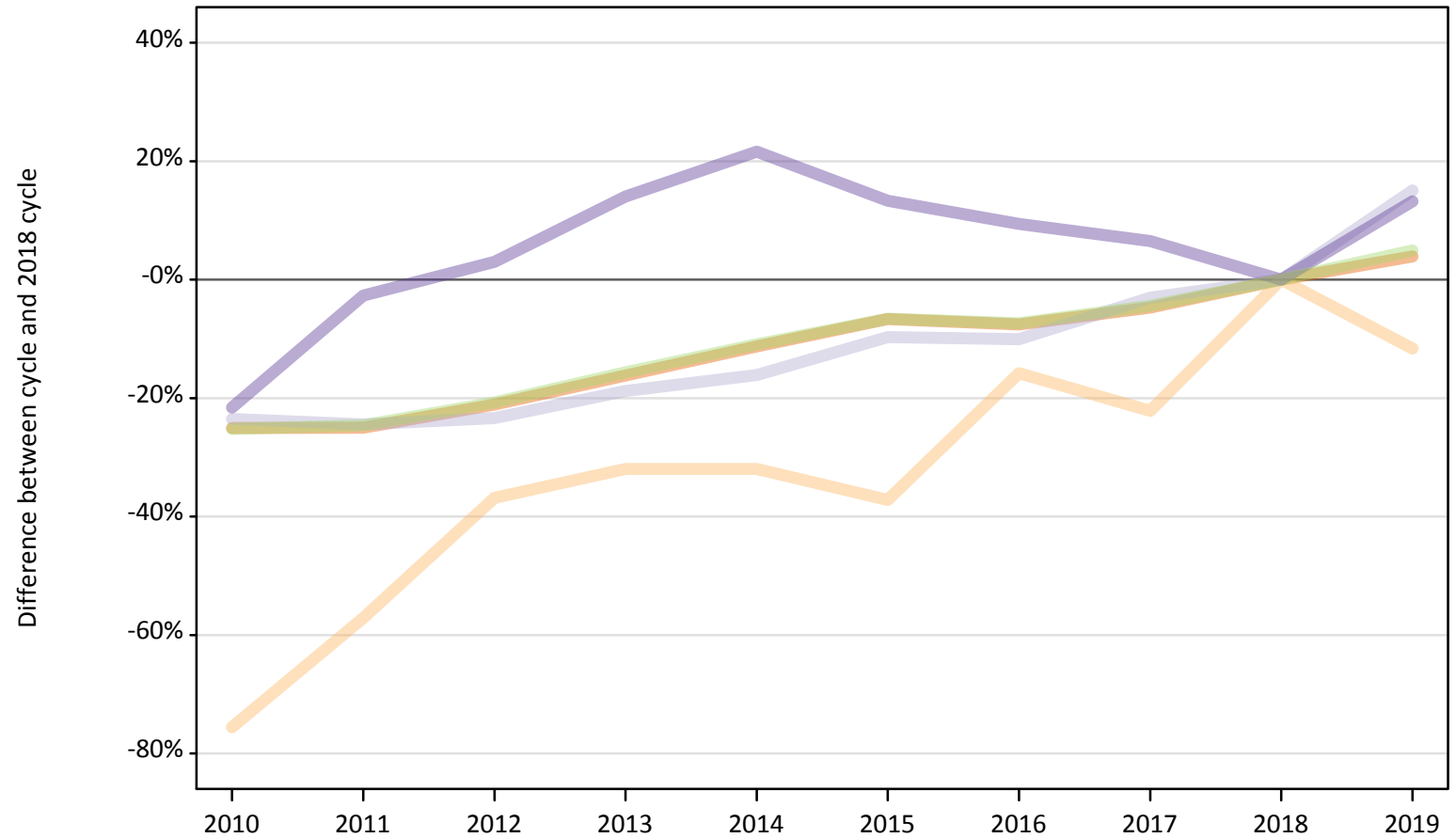
Country of provider	2010	2011	2012	2013	2014	2015	2016	2017	2018	2019
England	-25%	-18%	-33%	-27%	-21%	-9%	-2%	-3%	0%	0%
Northern Ireland	59%	17%	11%	17%	23%	9%	-8%	-5%	0%	4%
Scotland	-7%	0%	4%	-2%	5%	1%	13%	0%	0%	-4%
Wales	-22%	-22%	-21%	-16%	-9%	10%	22%	29%	0%	-14%
UK	-21%	-15%	-27%	-23%	-16%	-7%	1%	-2%	0%	-1%

Note: The percentage change is not recorded in the above table for groups with fewer than 10 placed applicants in that cycle or in the 2018 cycle.

B.34 Placed applicants at 12 days after A level results day: domiciled in Not EU

Selected provider countries: difference between cycle and 2018 cycle (at 12 days after A level results day)

- England
- Northern Ireland
- Scotland
- Wales
- UK



Note: The percentage change is not plotted in the above chart for groups with fewer than 30 placed applicants in any one cycle.

B.35 Placed applicants at 12 days after A level results day: domiciled in Not EU

Placed applicants by provider country (at 12 days after A level results day)

Country of provider	2010	2011	2012	2013	2014	2015	2016	2017	2018	2019
England	24,260	24,280	25,550	27,150	28,720	30,220	29,920	30,850	32,380	33,650
Northern Ireland	70	110	170	180	180	170	220	210	270	240
Scotland	2,250	2,220	2,260	2,390	2,470	2,660	2,650	2,850	2,940	3,390
Wales	780	970	1,030	1,140	1,220	1,130	1,090	1,060	1,000	1,130
UK	27,360	27,590	29,000	30,860	32,590	34,180	33,890	34,970	36,590	38,400

B.36 Placed applicants at 12 days after A level results day: domiciled in Not EU

Selected provider countries: difference between cycle and 2018 cycle (at 12 days after A level results day)

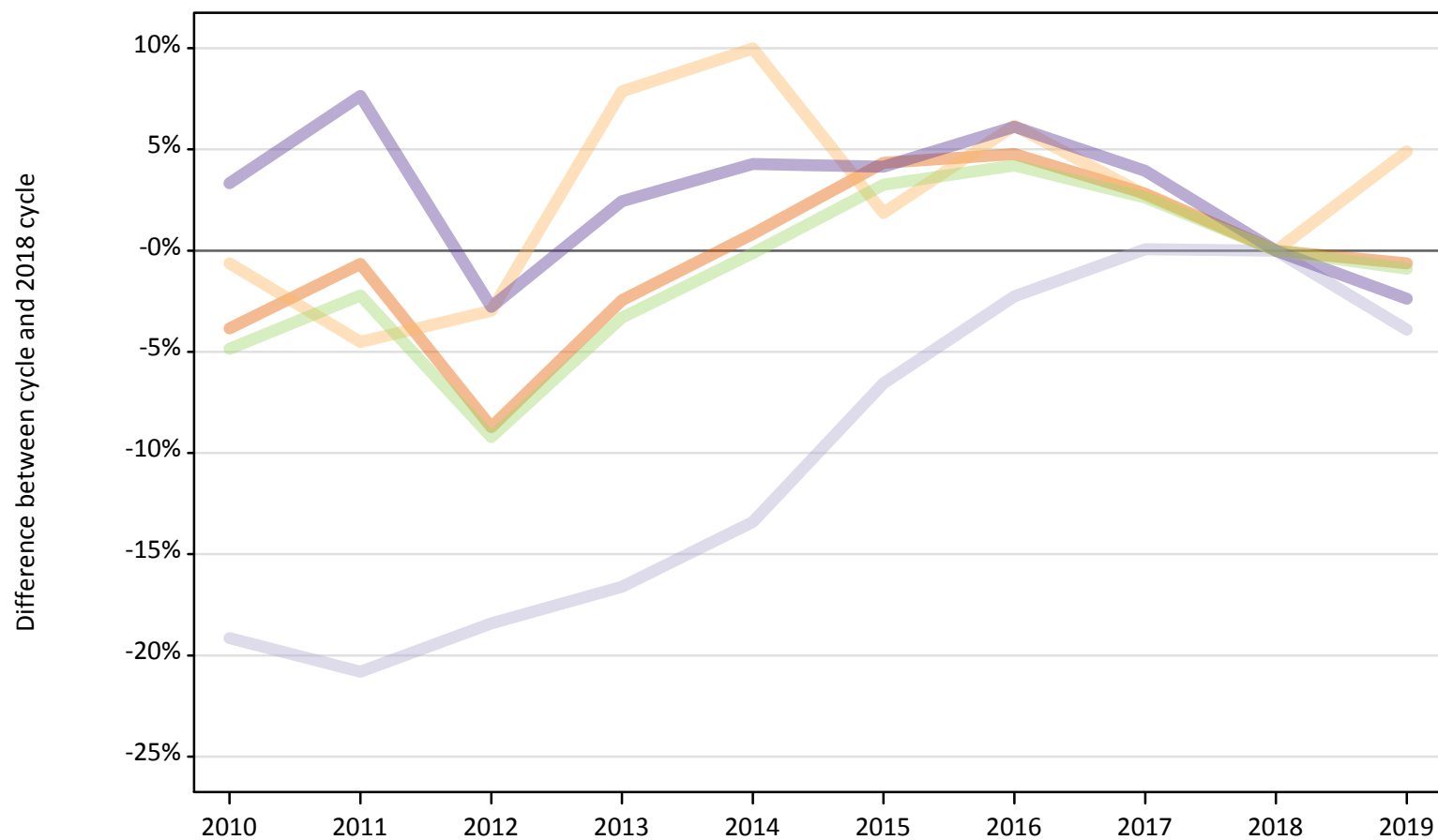
Country of provider	2010	2011	2012	2013	2014	2015	2016	2017	2018	2019
England	-25%	-25%	-21%	-16%	-11%	-7%	-8%	-5%	0%	4%
Northern Ireland	-76%	-57%	-37%	-32%	-32%	-37%	-16%	-22%	0%	-12%
Scotland	-24%	-24%	-23%	-19%	-16%	-10%	-10%	-3%	0%	15%
Wales	-22%	-3%	3%	14%	22%	13%	9%	7%	0%	13%
UK	-25%	-25%	-21%	-16%	-11%	-7%	-7%	-4%	0%	5%

Note: The percentage change is not recorded in the above table for groups with fewer than 10 placed applicants in that cycle or in the 2018 cycle.

B.37 Placed applicants at 12 days after A level results day: domiciled in UK

Selected provider countries: difference between cycle and 2018 cycle (at 12 days after A level results day)

- England
- Northern Ireland
- Scotland
- Wales
- UK



Note: The percentage change is not plotted in the above chart for groups with fewer than 30 placed applicants in any one cycle.

B.38 Placed applicants at 12 days after A level results day: domiciled in UK

Placed applicants by provider country (at 12 days after A level results day)

Country of provider	2010	2011	2012	2013	2014	2015	2016	2017	2018	2019
England	331,110	342,110	314,340	335,910	347,220	359,330	360,780	354,060	344,360	342,220
Northern Ireland	8,990	8,640	8,780	9,760	9,950	9,220	9,610	9,300	9,050	9,490
Scotland	31,220	30,580	31,500	32,200	33,430	36,080	37,740	38,640	38,610	37,100
Wales	21,060	21,940	19,820	20,880	21,260	21,230	21,630	21,190	20,390	19,900
UK	392,370	403,270	374,430	398,750	411,860	425,850	429,750	423,190	412,400	408,720

B.39 Placed applicants at 12 days after A level results day: domiciled in UK

Selected provider countries: difference between cycle and 2018 cycle (at 12 days after A level results day)

Country of provider	2010	2011	2012	2013	2014	2015	2016	2017	2018	2019
England	-4%	-1%	-9%	-2%	1%	4%	5%	3%	0%	-1%
Northern Ireland	-1%	-5%	-3%	8%	10%	2%	6%	3%	0%	5%
Scotland	-19%	-21%	-18%	-17%	-13%	-7%	-2%	0%	0%	-4%
Wales	3%	8%	-3%	2%	4%	4%	6%	4%	0%	-2%
UK	-5%	-2%	-9%	-3%	-0%	3%	4%	3%	0%	-1%

Note: The percentage change is not recorded in the above table for groups with fewer than 10 placed applicants in that cycle or in the 2018 cycle.