

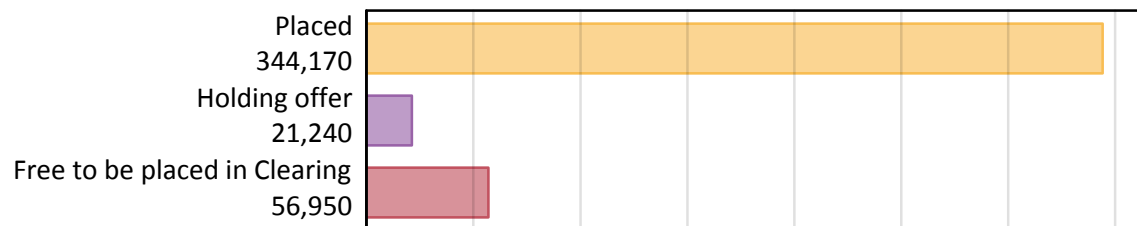
Daily Clearing Analysis: Overview

Analysis at 00:05 on Tuesday 27 August 2019 (12 days after A level results day)

A.1 Applicants by type and status from England, 2019 cycle

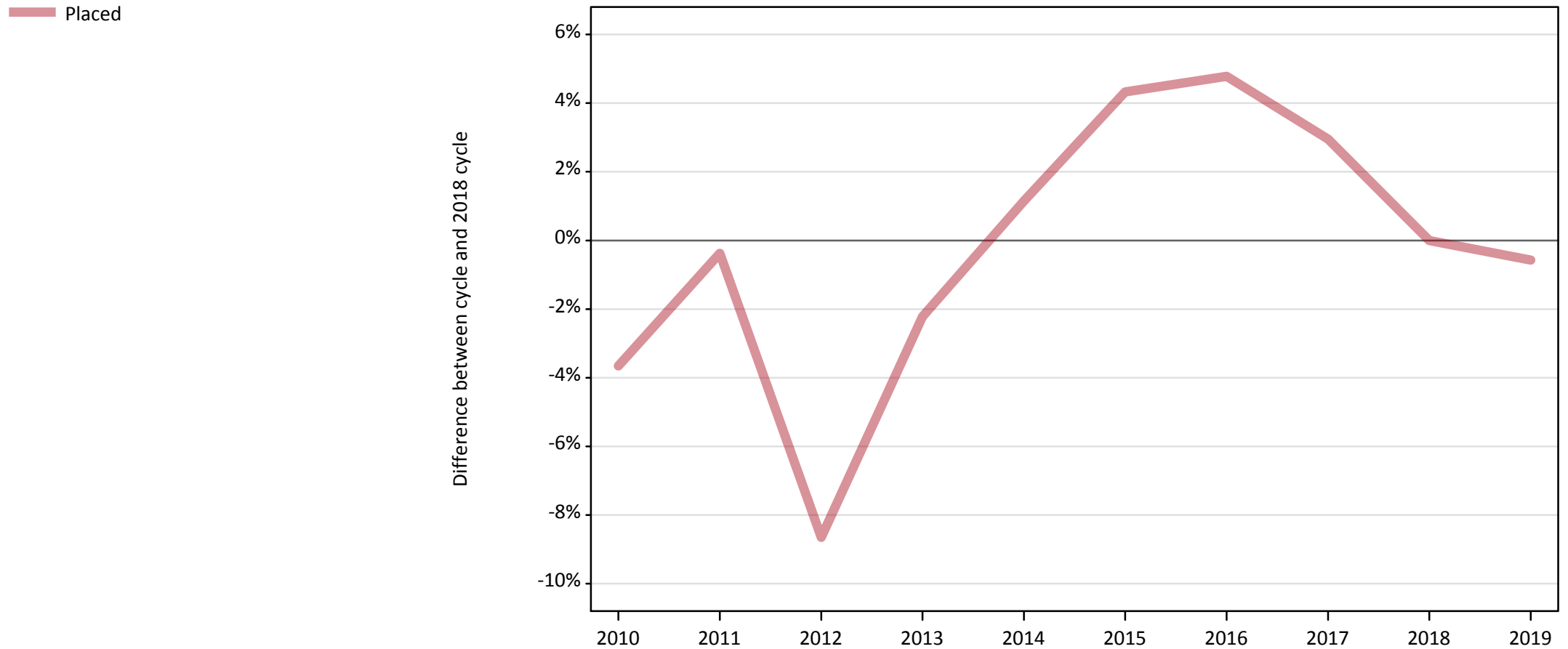
Applicant type	Status	2019
Main scheme	Placed (Clearing)	36,240
	Placed (Adjustment)	500
	Placed (Firm)	265,140
	Placed (Insurance)	24,760
	Placed (Other)	9,140
	Holding offer	21,240
	Free to be placed in Clearing	56,950
Direct to Clearing	Placed (Direct to Clearing)	8,400
	Other (Direct to Clearing)	6,670
All applicants	Placed	344,170

A.2 Summary of applicants who are placed, holding offers or free to be placed in Clearing (England)



A.3 All placed applicants from England: 12 days after A level results day

All placed applicants: difference between cycle and 2018 cycle



Note: The percentage change is not plotted in the above chart for groups with fewer than 30 placed applicants in any one cycle.

A.4 All placed applicants from England: 12 days after A level results day

All placed applicants: applicants at 12 days after A level results day

Applicant type	Status	2010	2011	2012	2013	2014	2015	2016	2017	2018	2019
All applicants	Placed	333,490	344,850	316,220	338,490	350,140	361,150	362,720	356,380	346,160	344,170

A.5 All placed applicants from England: 12 days after A level results day

All placed applicants: difference between cycle and 2018 cycle

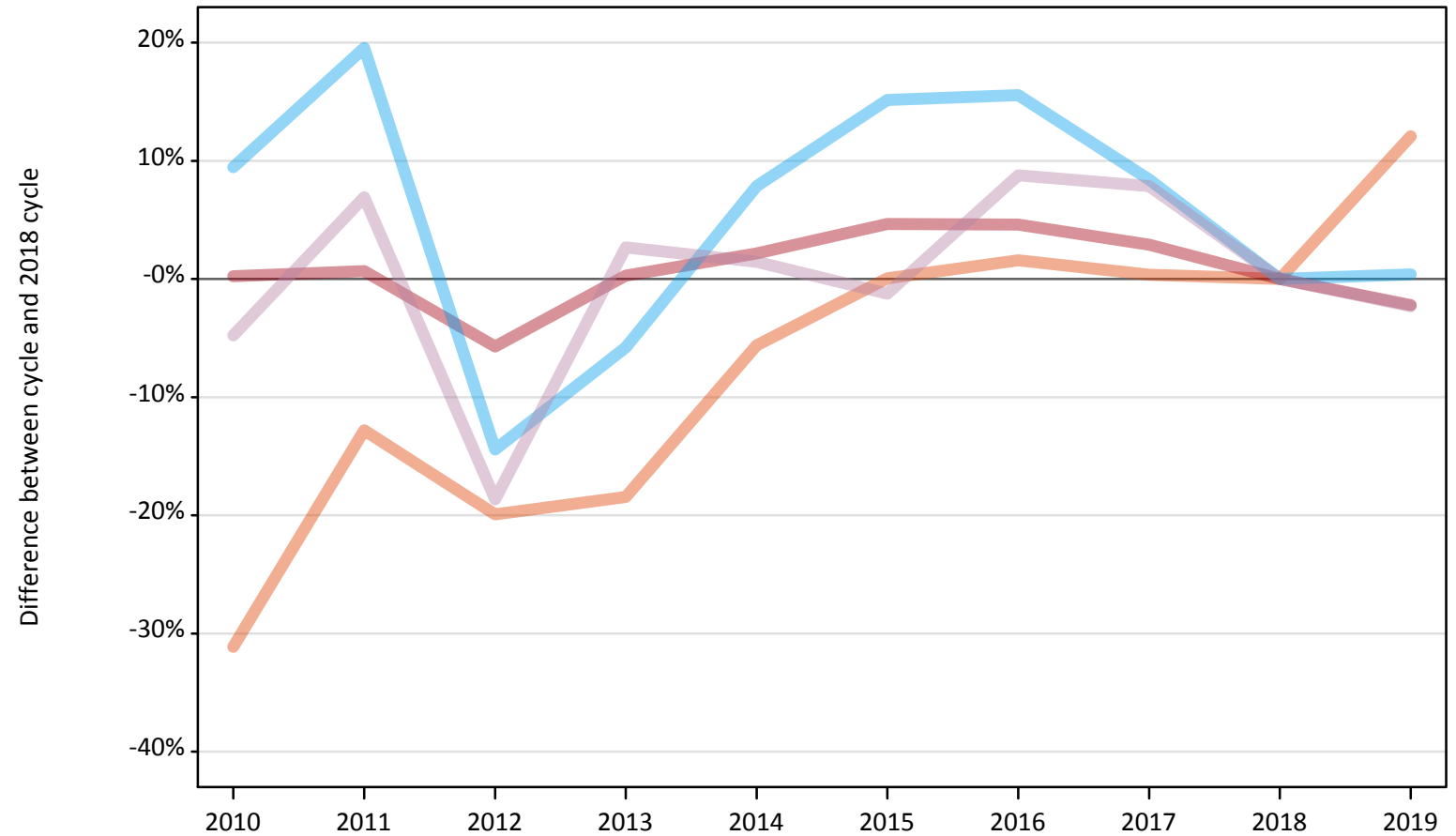
Applicant type	Status	2010	2011	2012	2013	2014	2015	2016	2017	2018	2019
All applicants	Placed	-4%	-0%	-9%	-2%	1%	4%	5%	3%	0%	-1%

Note: The percentage change is not recorded in the above table for groups with fewer than 10 placed applicants in that cycle or in the 2018 cycle.

A.6 Placed main scheme applicants from England: 12 days after A level results day

All Main scheme placed routes (excluding Adjustment): difference between cycle and 2018 cycle

- Placed (Clearing)
- Placed (Firm)
- Placed (Insurance)
- Placed (Other)



Note: The percentage change is not plotted in the above chart for groups with fewer than 30 placed applicants in any one cycle.

A.7 Placed main scheme applicants from England: 12 days after A level results day

All Main scheme placed routes (excluding Adjustment): applicants at 12 days after A level results day

Applicant type	Status	2010	2011	2012	2013	2014	2015	2016	2017	2018	2019
Main scheme	Placed (Clearing)	22,270	28,190	25,890	26,370	30,510	32,350	32,840	32,450	32,330	36,240
	Placed (Firm)	271,710	272,890	255,620	271,890	276,960	283,720	283,560	278,950	271,090	265,140
	Placed (Insurance)	27,000	29,480	21,100	23,230	26,600	28,400	28,500	26,730	24,660	24,760
	Placed (Other)	8,910	10,000	7,610	9,600	9,490	9,240	10,170	10,090	9,350	9,140

A.8 Placed main scheme applicants from England: 12 days after A level results day

All Main scheme placed routes (excluding Adjustment): difference between cycle and 2018 cycle

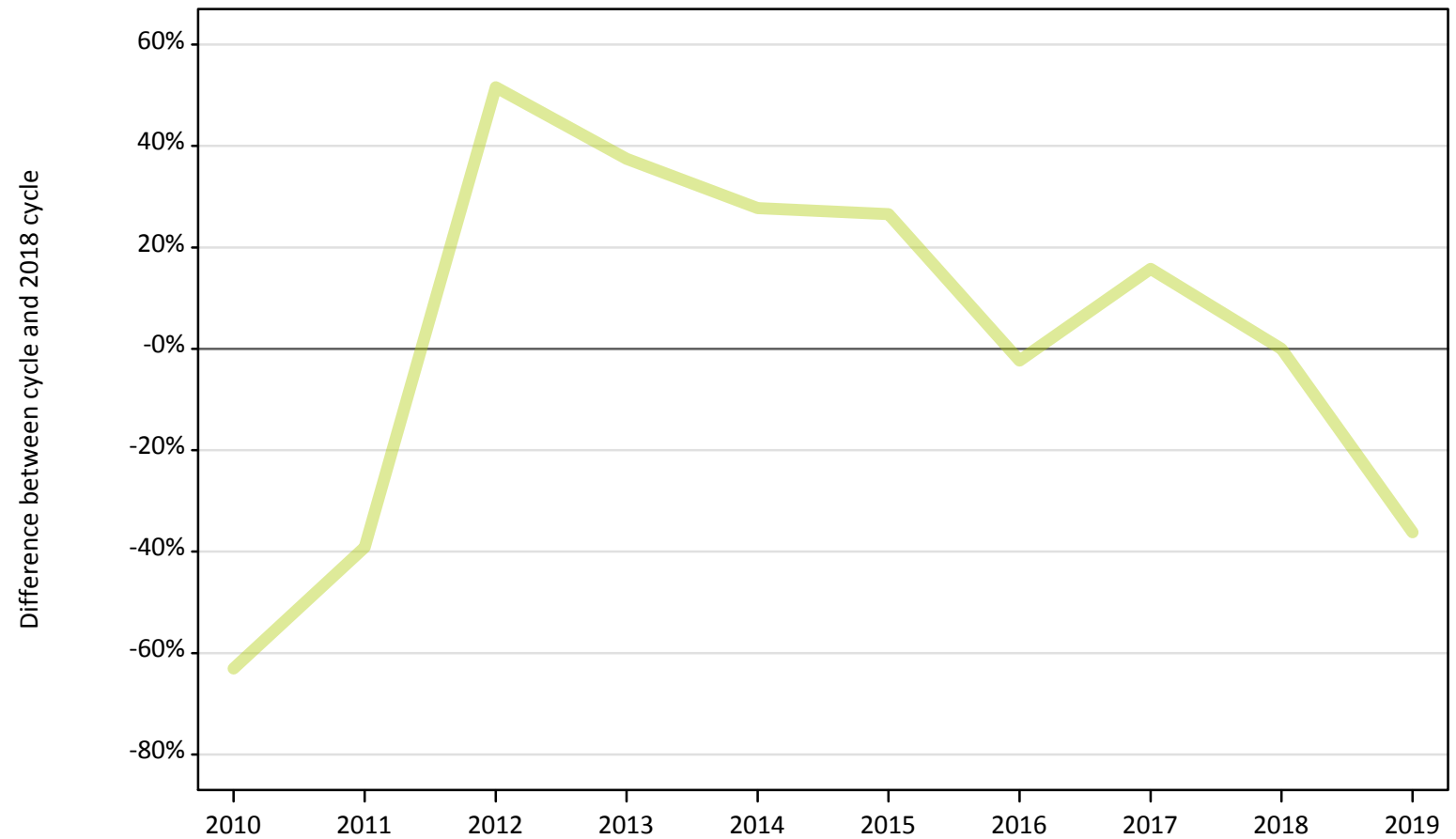
Applicant type	Status	2010	2011	2012	2013	2014	2015	2016	2017	2018	2019
Main scheme	Placed (Clearing)	-31%	-13%	-20%	-18%	-6%	0%	2%	0%	0%	12%
	Placed (Firm)	0%	1%	-6%	0%	2%	5%	5%	3%	0%	-2%
	Placed (Insurance)	9%	20%	-14%	-6%	8%	15%	16%	8%	0%	0%
	Placed (Other)	-5%	7%	-19%	3%	1%	-1%	9%	8%	0%	-2%

Note: The percentage change is not recorded in the above table for groups with fewer than 10 placed applicants in that cycle or in the 2018 cycle.

A.9 Main scheme applicants placed through adjustment: 12 days after A level results day

Placed through adjustment: difference between cycle and 2018 cycle

Placed (Adjustment)



Note: The percentage change is not plotted in the above chart for groups with fewer than 30 placed applicants in any one cycle.

A.10 Main scheme applicants placed through adjustment: 12 days after A level results day

Placed through adjustment: applicants at 12 days after A level results day

Applicant type	Status	2010	2011	2012	2013	2014	2015	2016	2017	2018	2019
Main scheme	Placed (Adjustment)	290	470	1,180	1,070	1,000	990	760	900	780	500

A.11 Main scheme applicants placed through adjustment: 12 days after A level results day

Placed through adjustment: difference between cycle and 2018 cycle

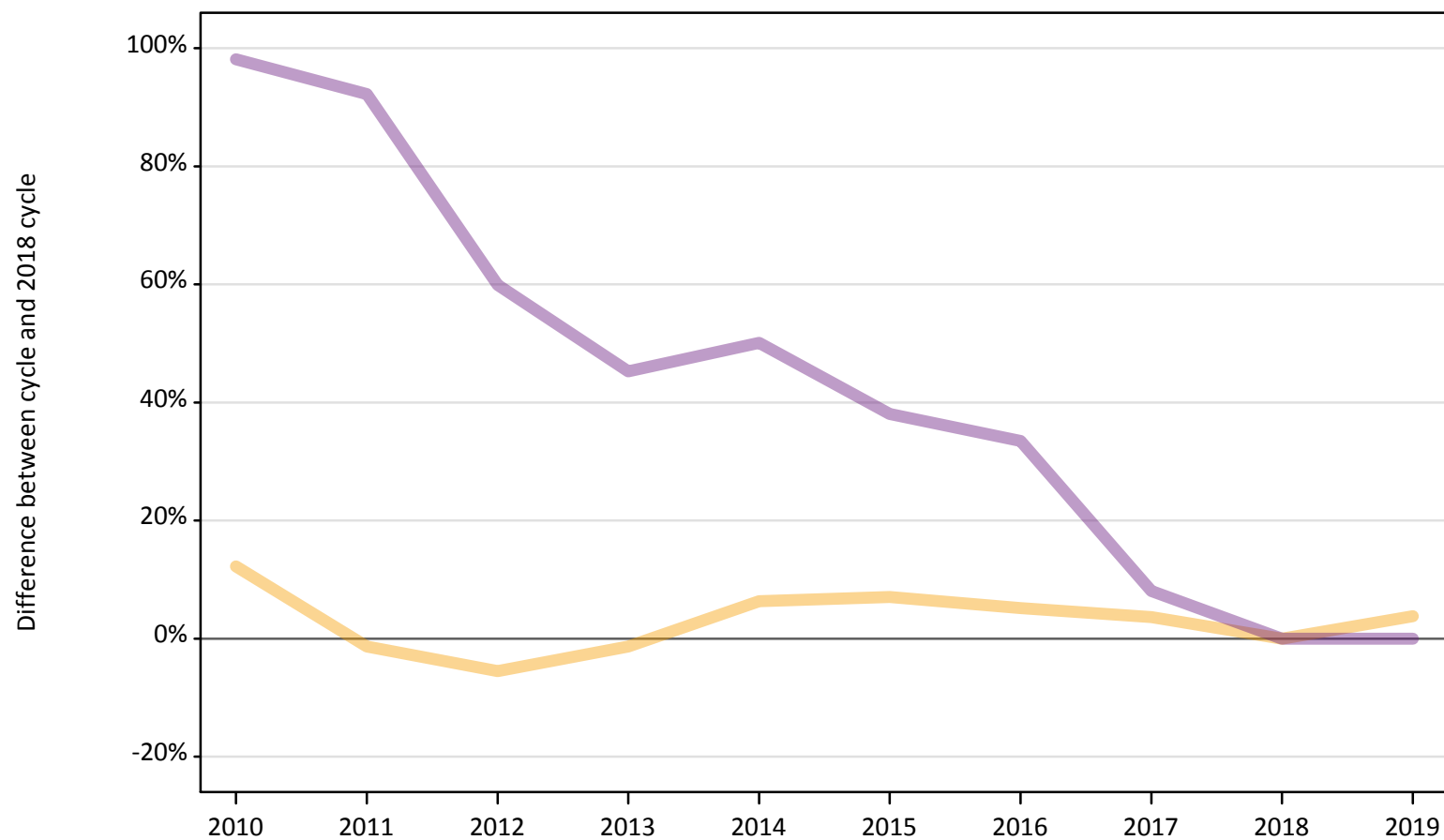
Applicant type	Status	2010	2011	2012	2013	2014	2015	2016	2017	2018	2019
Main scheme	Placed (Adjustment)	-63%	-39%	52%	37%	28%	27%	-2%	16%	0%	-36%

Note: The percentage change is not recorded in the above table for groups with fewer than 10 placed applicants in that cycle or in the 2018 cycle.

A.12 Main scheme applicants not currently placed from England: 12 days after A level results day

Applicants in unplaced states: difference between cycle and 2018 cycle

— Holding offer
— Free to be placed in Clearing



Note: The percentage change is not plotted in the above chart for groups with fewer than 30 unplaced applicants in any one cycle.

A.13 Main scheme applicants not currently placed from England: 12 days after A level results day

Applicants in unplaced states: applicants at 12 days after A level results day

Applicant type	Status	2010	2011	2012	2013	2014	2015	2016	2017	2018	2019
Main scheme	Holding offer	22,960	20,180	19,330	20,190	21,750	21,900	21,520	21,210	20,460	21,240
	Free to be placed in Clearing	112,850	109,490	91,070	82,730	85,490	78,640	76,020	61,550	56,960	56,950

A.14 Main scheme applicants not currently placed from England: 12 days after A level results day

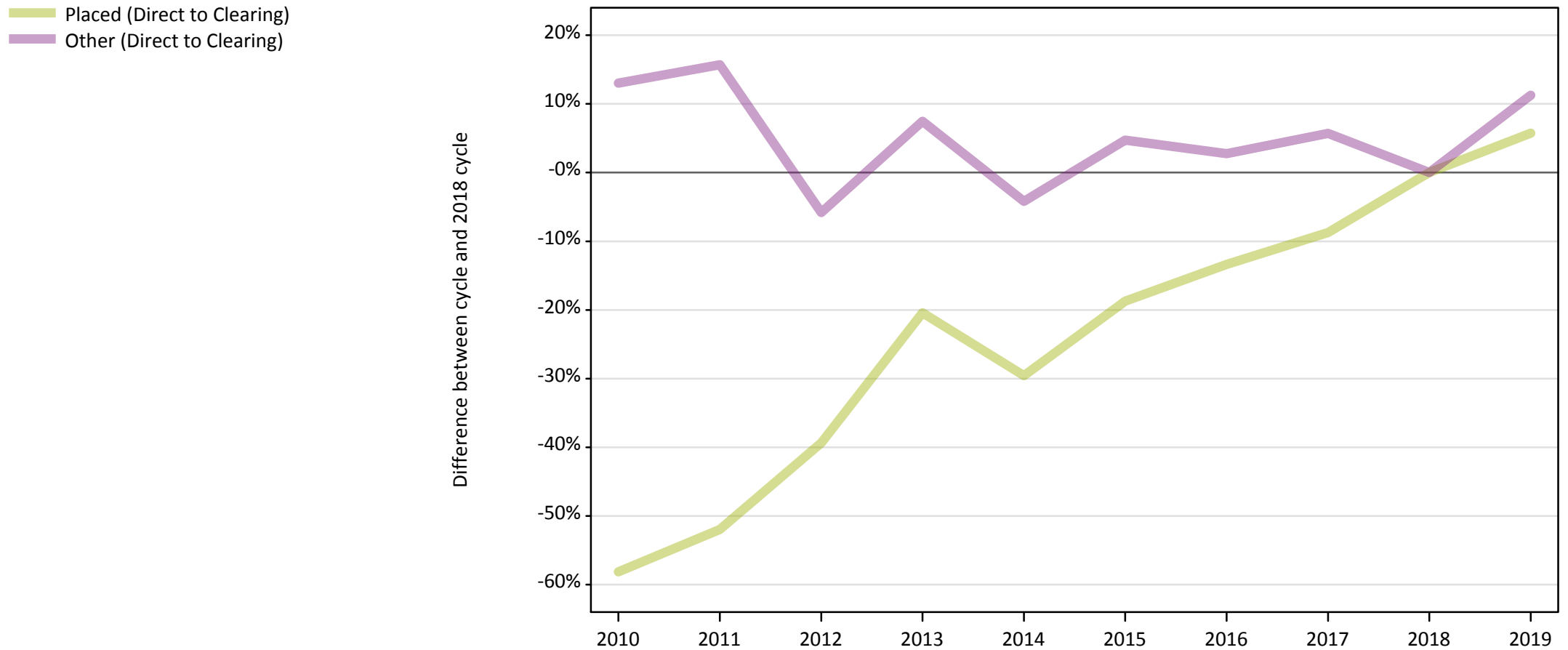
Applicants in unplaced states: difference between cycle and 2018 cycle

Applicant type	Status	2010	2011	2012	2013	2014	2015	2016	2017	2018	2019
Main scheme	Holding offer	12%	-1%	-6%	-1%	6%	7%	5%	4%	0%	4%
	Free to be placed in Clearing	98%	92%	60%	45%	50%	38%	33%	8%	0%	-0%

Note: The percentage change is not recorded in the above table for groups with fewer than 10 unplaced applicants in that cycle or in the 2018 cycle.

A.15 Direct to Clearing applicants from England: 12 days after A level results day

Direct to Clearing: difference between cycle and 2018 cycle



Note: The percentage change is not plotted in the above chart for groups with fewer than 30 placed applicants in any one cycle.

A.16 Direct to Clearing applicants from England: 12 days after A level results day

Direct to Clearing 12 days after A level results day

Applicant type	Status	2010	2011	2012	2013	2014	2015	2016	2017	2018	2019
Direct to Clearing	Placed (Direct to Clearing)	3,320	3,810	4,820	6,320	5,590	6,460	6,880	7,250	7,940	8,400
	Other (Direct to Clearing)	6,770	6,940	5,650	6,440	5,740	6,280	6,160	6,340	5,990	6,670

A.17 Direct to Clearing applicants from England: 12 days after A level results day

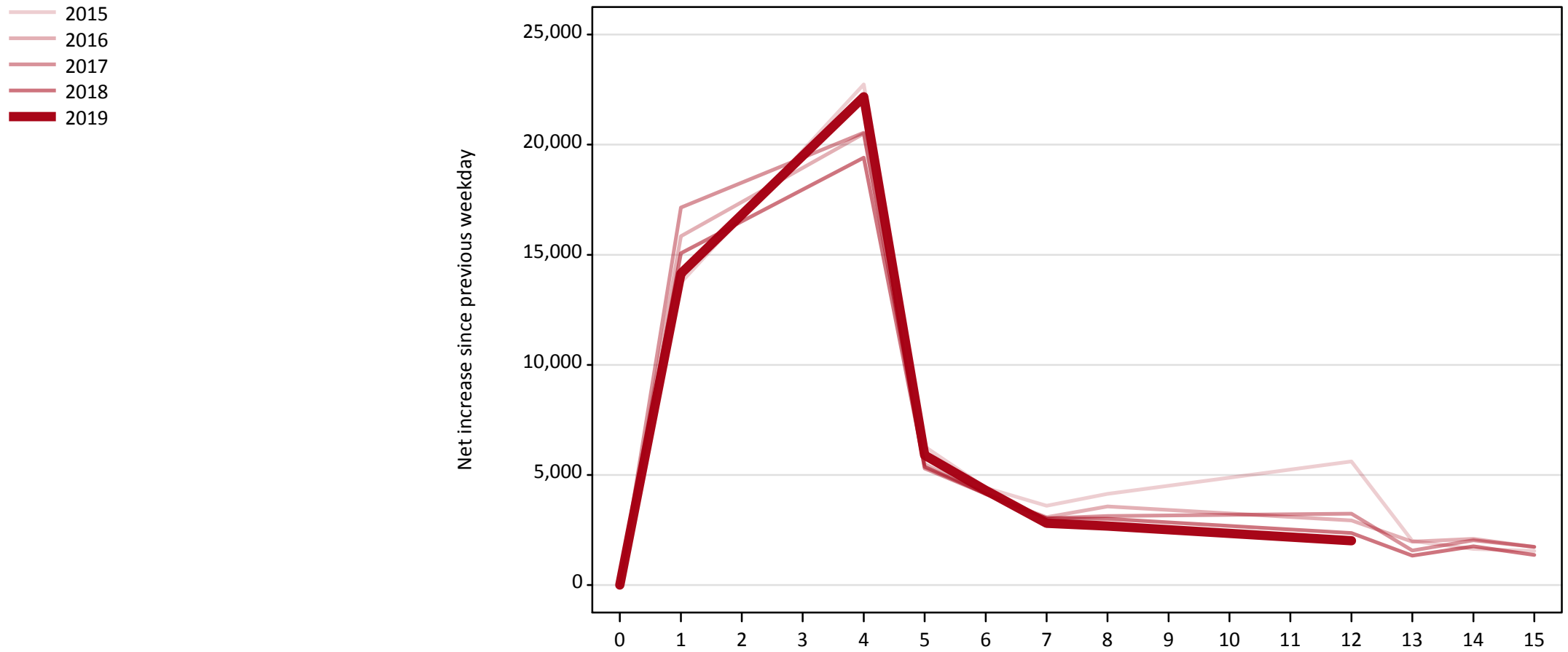
Direct to Clearing: difference between cycle and 2018 cycle

Applicant type	Status	2010	2011	2012	2013	2014	2015	2016	2017	2018	2019
Direct to Clearing	Placed (Direct to Clearing)	-58%	-52%	-39%	-20%	-30%	-19%	-13%	-9%	0%	6%
	Other (Direct to Clearing)	13%	16%	-6%	7%	-4%	5%	3%	6%	0%	11%

Note: The percentage change is not recorded in the above table for groups with fewer than 10 placed applicants in that cycle or in the 2018 cycle.

A.18 All Placed: Daily net change (from England)

Net increase since previous weekday (2019 cycle up to 12 days after A level results day)

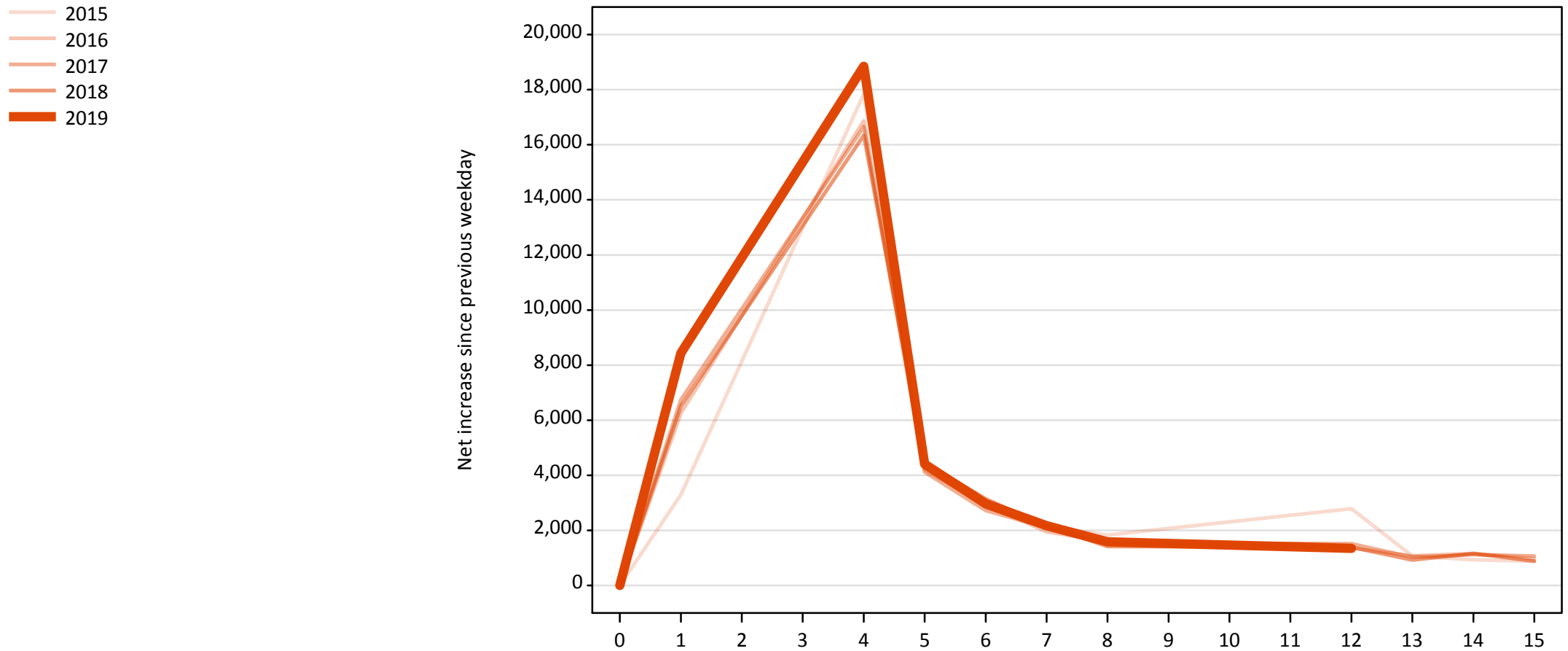


A.19 All Placed: Daily net change (from England)

Net increase since previous weekday (2019 cycle up to 12 days after A level results day)

Applicant status, days since A level results day		2015	2016	2017	2018	2019
All Placed	0	0	0	0	0	0
	1	13,730	15,840	17,150	15,070	14,150
	4	22,730	20,500	20,540	19,410	22,170
	5	6,300	5,500	5,300	5,370	5,900
	6	4,410	4,120	4,140	4,150	4,300
	7	3,600	3,080	3,030	3,030	2,800
	8	4,140	3,570	3,130	3,010	2,680
	12	5,610	2,940	3,240	2,360	2,020
	13	2,000	1,970	1,560	1,340	
	14	1,640	2,100	2,030	1,760	
	15	1,540	1,730	1,740	1,360	

A.20 Placed through Clearing only: Daily net change (from England)
Net increase since previous weekday (2019 cycle up to 12 days after A level results day)



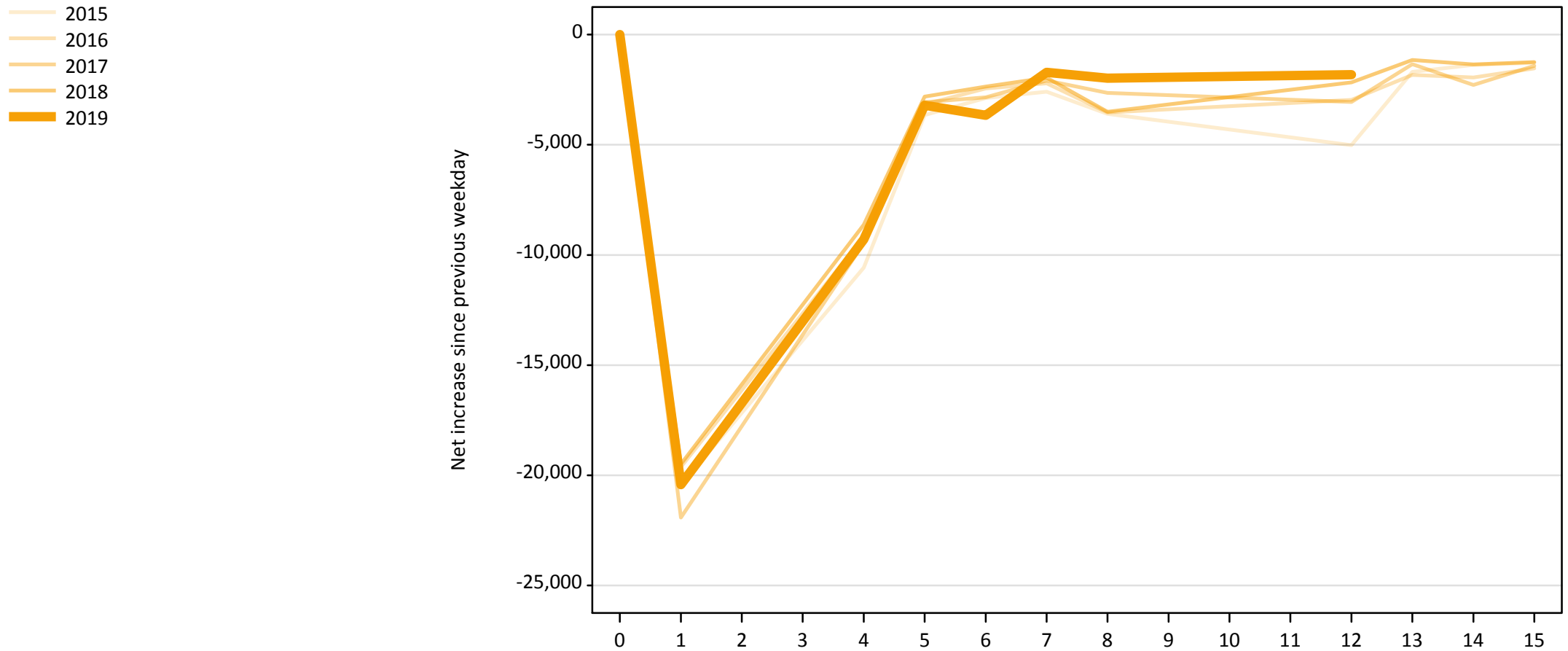
A.21 Placed through Clearing only: Daily net change (from England)

Net increase since previous weekday (2019 cycle up to 12 days after A level results day)

Applicant status, days since A level results day		2015	2016	2017	2018	2019
Placed through Clearing only	0	0	0	0	0	0
	1	3,300	6,260	6,740	6,510	8,440
	4	17,850	16,870	16,660	16,340	18,850
	5	4,470	4,190	4,120	4,470	4,410
	6	2,830	2,940	2,720	3,150	2,970
	7	2,140	1,950	2,100	2,160	2,170
	8	1,830	1,590	1,540	1,410	1,580
	12	2,790	1,360	1,510	1,390	1,350
	13	1,060	1,080	1,020	920	
	14	930	1,160	1,120	1,160	
	15	880	970	1,060	880	

A.22 Holding Offer: Daily net change (from England)

Net increase since previous weekday (2019 cycle up to 12 days after A level results day)

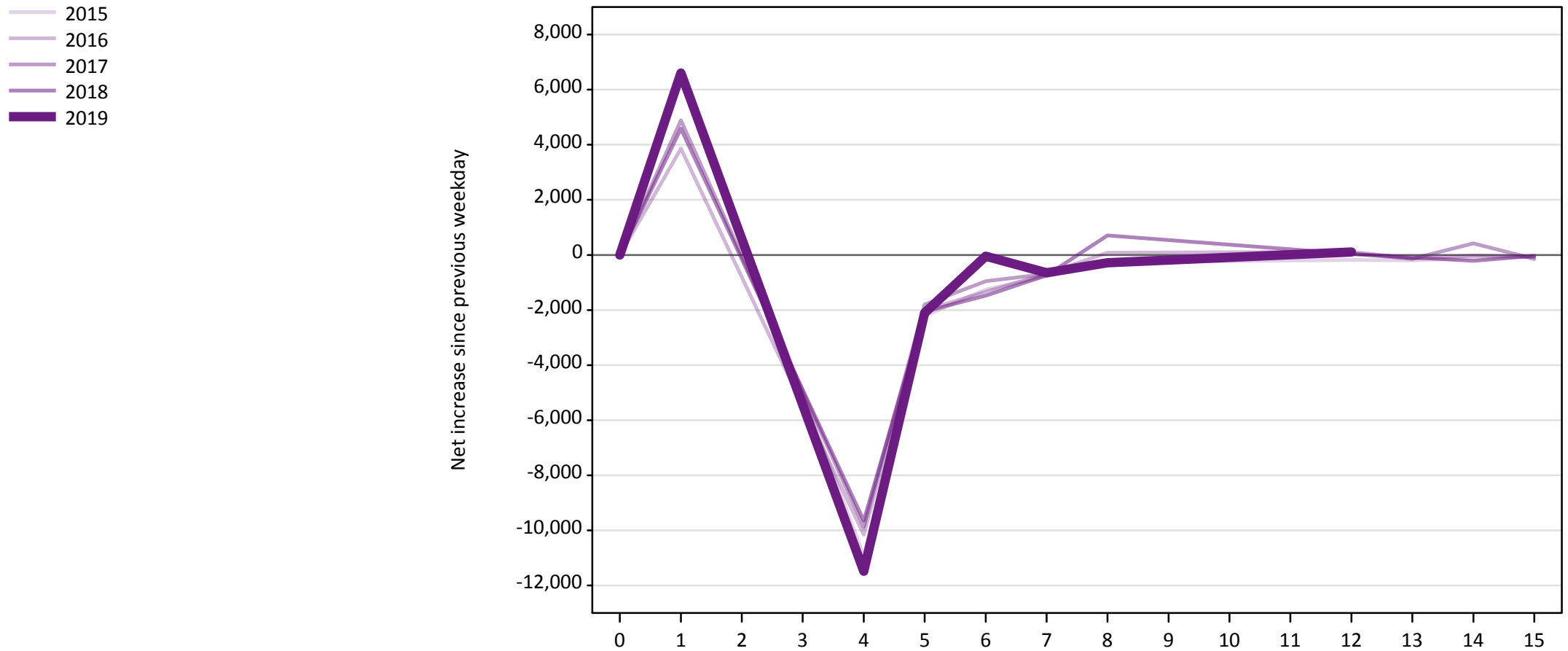


A.23 Holding Offer: Daily net change (from England)

Net increase since previous weekday (2019 cycle up to 12 days after A level results day)

Applicant status, days since A level results day		2015	2016	2017	2018	2019
Holding Offer	0	0	0	0	0	0
	1	-20,460	-19,620	-21,920	-19,500	-20,430
	4	-10,580	-9,160	-9,470	-8,630	-9,300
	5	-3,660	-3,160	-3,060	-2,820	-3,210
	6	-2,870	-2,450	-2,840	-2,360	-3,660
	7	-2,590	-2,210	-2,080	-1,960	-1,720
	8	-3,590	-3,540	-2,650	-3,510	-1,980
	12	-5,010	-2,970	-3,060	-2,170	-1,820
	13	-1,690	-1,830	-1,340	-1,160	
	14	-1,370	-1,950	-2,290	-1,360	
	15	-1,280	-1,530	-1,420	-1,240	

A.24 Free to be placed in Clearing: Daily net change (from England)
Net increase since previous weekday (2019 cycle up to 12 days after A level results day)



A.25 Free to be placed in Clearing: Daily net change (from England)

Net increase since previous weekday (2019 cycle up to 12 days after A level results day)

Applicant status, days since A level results day		2015	2016	2017	2018	2019
Free to be placed in Clearing	0	0	0	0	0	0
	1	6,690	3,860	4,890	4,590	6,600
	4	-10,920	-10,160	-9,880	-9,640	-11,480
	5	-2,220	-2,000	-1,800	-2,050	-2,110
	6	-1,260	-1,340	-950	-1,480	-40
	7	-770	-680	-690	-740	-640
	8	-270	80	-270	710	-290
	12	-190	110	50	40	110
	13	-200	-130	-140	-90	
	14	-120	-20	420	-220	
	15	-70	-70	-150	-30	