

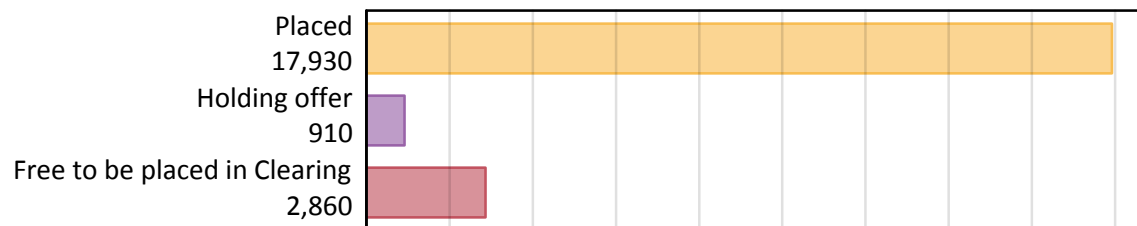
Daily Clearing Analysis: Overview

Analysis at 00:05 on Tuesday 27 August 2019 (12 days after A level results day)

A.1 Applicants by type and status from Wales, 2019 cycle

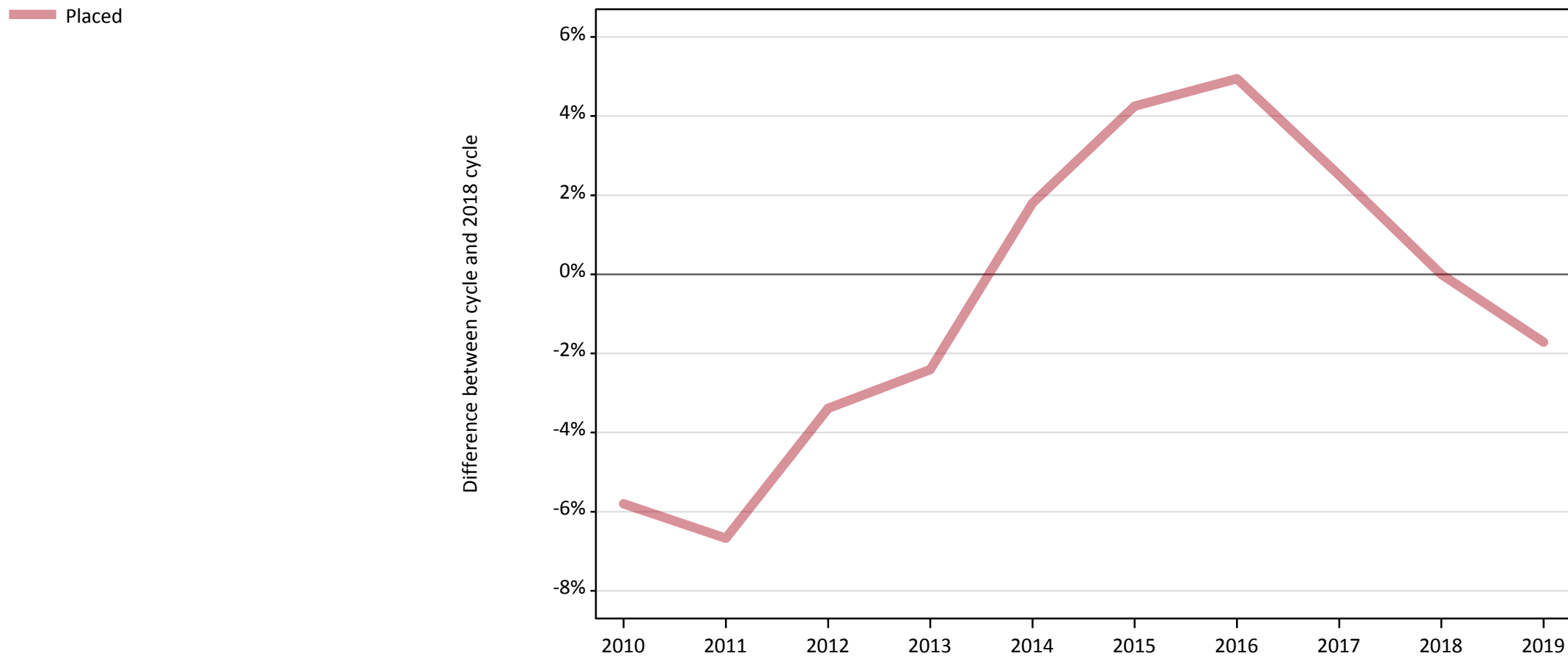
Applicant type	Status	2019
Main scheme	Placed (Clearing)	1,180
	Placed (Adjustment)	10
	Placed (Firm)	15,000
	Placed (Insurance)	810
	Placed (Other)	440
	Holding offer	910
	Free to be placed in Clearing	2,860
Direct to Clearing	Placed (Direct to Clearing)	490
	Other (Direct to Clearing)	290
All applicants	Placed	17,930

A.2 Summary of applicants who are placed, holding offers or free to be placed in Clearing (Wales)



A.3 All placed applicants from Wales: 12 days after A level results day

All placed applicants: difference between cycle and 2018 cycle



Note: The percentage change is not plotted in the above chart for groups with fewer than 30 placed applicants in any one cycle.

A.4 All placed applicants from Wales: 12 days after A level results day

All placed applicants: applicants at 12 days after A level results day

Applicant type	Status	2010	2011	2012	2013	2014	2015	2016	2017	2018	2019
All applicants	Placed	17,180	17,020	17,620	17,800	18,570	19,010	19,140	18,690	18,240	17,930

A.5 All placed applicants from Wales: 12 days after A level results day

All placed applicants: difference between cycle and 2018 cycle

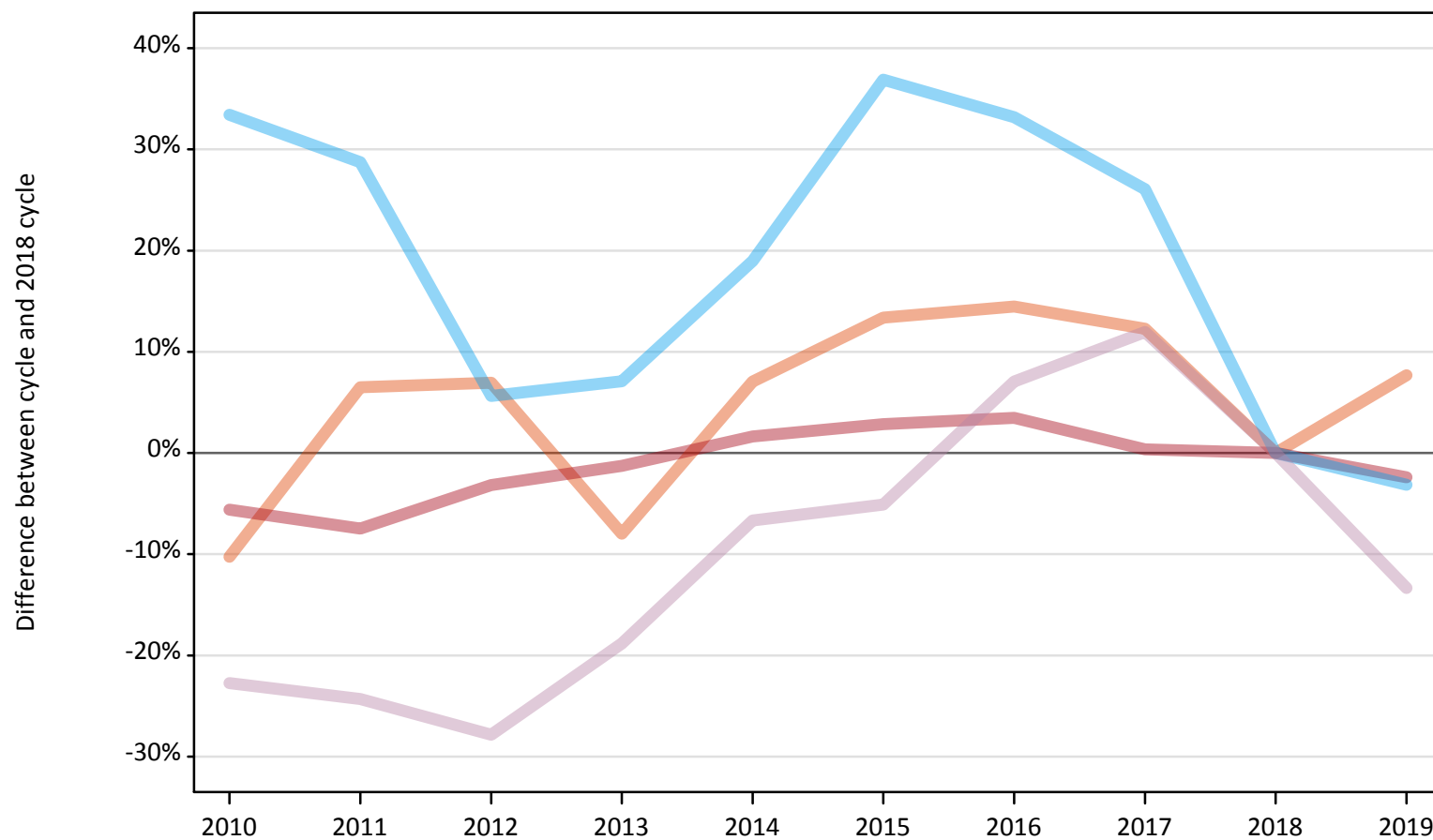
Applicant type	Status	2010	2011	2012	2013	2014	2015	2016	2017	2018	2019
All applicants	Placed	-6%	-7%	-3%	-2%	2%	4%	5%	3%	0%	-2%

Note: The percentage change is not recorded in the above table for groups with fewer than 10 placed applicants in that cycle or in the 2018 cycle.

A.6 Placed main scheme applicants from Wales: 12 days after A level results day

All Main scheme placed routes (excluding Adjustment): difference between cycle and 2018 cycle

- Placed (Clearing)
- Placed (Firm)
- Placed (Insurance)
- Placed (Other)



Note: The percentage change is not plotted in the above chart for groups with fewer than 30 placed applicants in any one cycle.

A.7 Placed main scheme applicants from Wales: 12 days after A level results day

All Main scheme placed routes (excluding Adjustment): applicants at 12 days after A level results day

Applicant type	Status	2010	2011	2012	2013	2014	2015	2016	2017	2018	2019
Main scheme	Placed (Clearing)	980	1,160	1,170	1,010	1,170	1,240	1,250	1,230	1,090	1,180
	Placed (Firm)	14,500	14,220	14,880	15,170	15,620	15,800	15,900	15,420	15,370	15,000
	Placed (Insurance)	1,110	1,070	880	890	990	1,140	1,110	1,050	830	810
	Placed (Other)	390	390	370	410	480	480	550	570	510	440

A.8 Placed main scheme applicants from Wales: 12 days after A level results day

All Main scheme placed routes (excluding Adjustment): difference between cycle and 2018 cycle

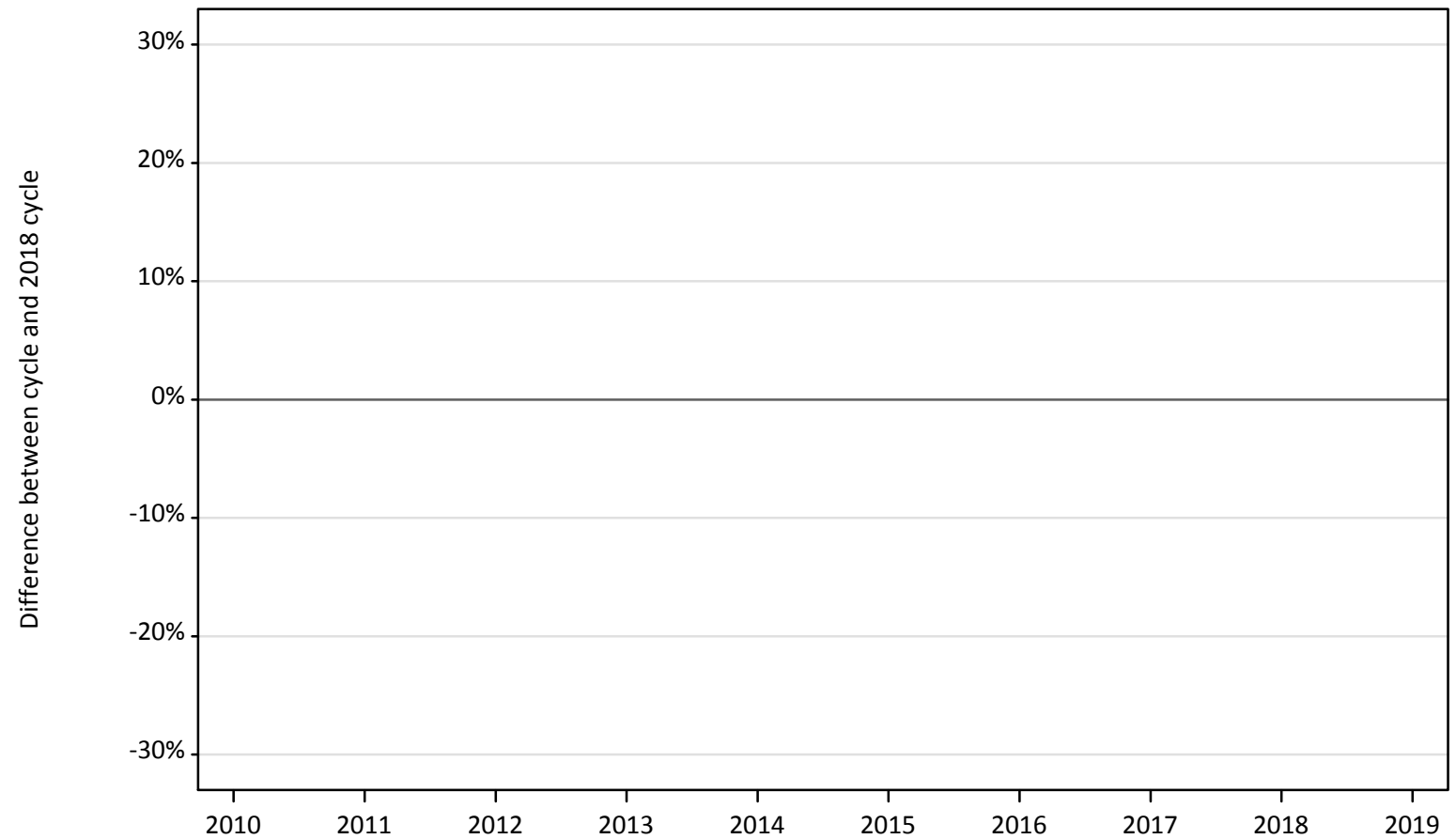
Applicant type	Status	2010	2011	2012	2013	2014	2015	2016	2017	2018	2019
Main scheme	Placed (Clearing)	-10%	7%	7%	-8%	7%	13%	14%	12%	0%	8%
	Placed (Firm)	-6%	-7%	-3%	-1%	2%	3%	3%	0%	0%	-2%
	Placed (Insurance)	33%	29%	6%	7%	19%	37%	33%	26%	0%	-3%
	Placed (Other)	-23%	-24%	-28%	-19%	-7%	-5%	7%	12%	0%	-13%

Note: The percentage change is not recorded in the above table for groups with fewer than 10 placed applicants in that cycle or in the 2018 cycle.

A.9 Main scheme applicants placed through adjustment: 12 days after A level results day

Placed through adjustment: difference between cycle and 2018 cycle

Placed (Adjustment)



Note: The percentage change is not plotted in the above chart for groups with fewer than 30 placed applicants in any one cycle.

A.10 Main scheme applicants placed through adjustment: 12 days after A level results day

Placed through adjustment: applicants at 12 days after A level results day

Applicant type	Status	2010	2011	2012	2013	2014	2015	2016	2017	2018	2019
Main scheme	Placed (Adjustment)	10	10	30	30	30	30	20	30	30	10

A.11 Main scheme applicants placed through adjustment: 12 days after A level results day

Placed through adjustment: difference between cycle and 2018 cycle

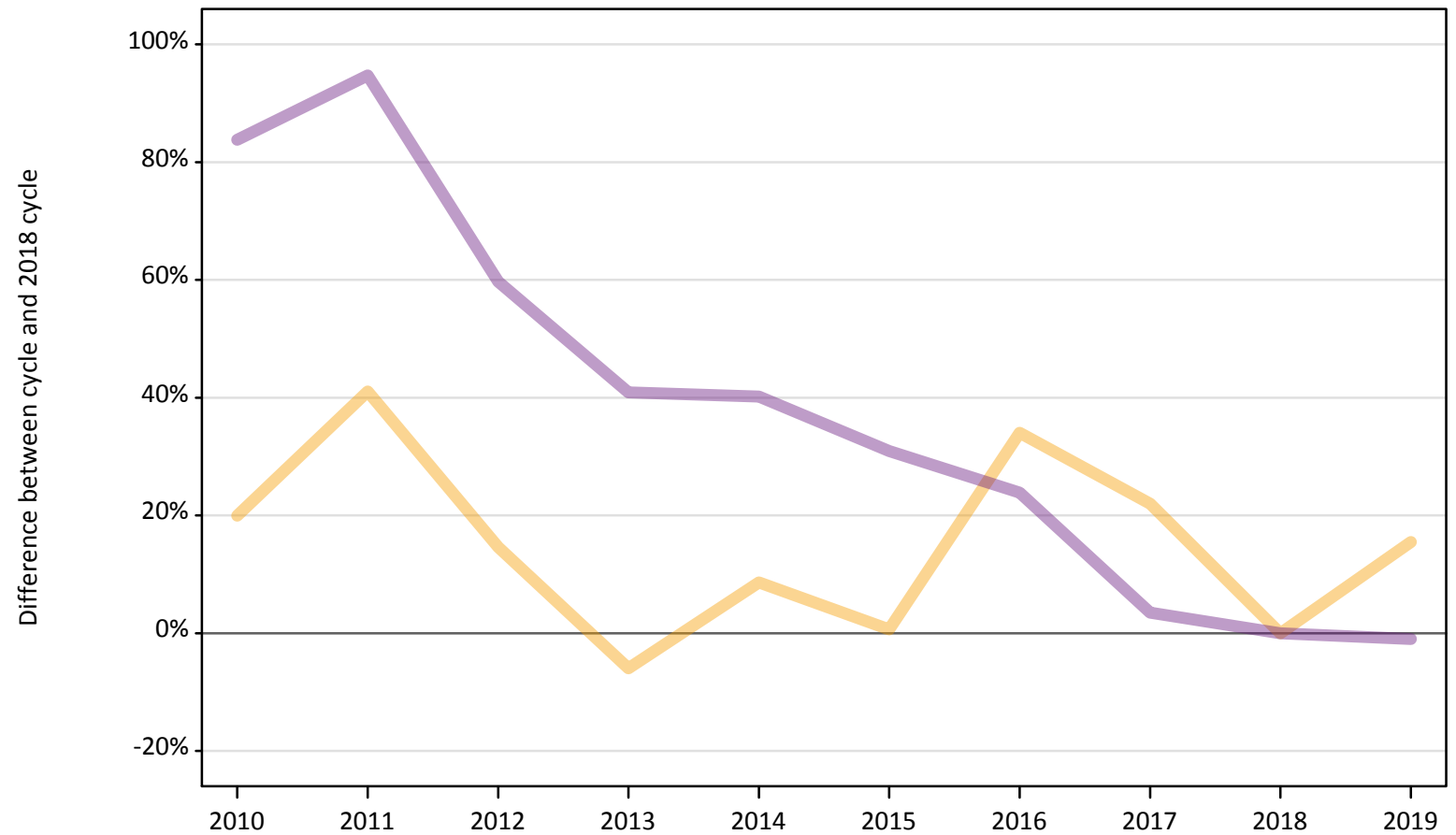
Applicant type	Status	2010	2011	2012	2013	2014	2015	2016	2017	2018	2019
Main scheme	Placed (Adjustment)	-61%	-70%	-12%	-21%	-3%	-15%	-42%	0%	0%	-61%

Note: The percentage change is not recorded in the above table for groups with fewer than 10 placed applicants in that cycle or in the 2018 cycle.

A.12 Main scheme applicants not currently placed from Wales: 12 days after A level results day

Applicants in unplaced states: difference between cycle and 2018 cycle

— Holding offer
— Free to be placed in Clearing



Note: The percentage change is not plotted in the above chart for groups with fewer than 30 unplaced applicants in any one cycle.

A.13 Main scheme applicants not currently placed from Wales: 12 days after A level results day

Applicants in unplaced states: applicants at 12 days after A level results day

Applicant type	Status	2010	2011	2012	2013	2014	2015	2016	2017	2018	2019
Main scheme	Holding offer	940	1,110	900	740	860	790	1,060	960	790	910
	Free to be placed in Clearing	5,320	5,630	4,620	4,080	4,050	3,790	3,580	2,990	2,890	2,860

A.14 Main scheme applicants not currently placed from Wales: 12 days after A level results day

Applicants in unplaced states: difference between cycle and 2018 cycle

Applicant type	Status	2010	2011	2012	2013	2014	2015	2016	2017	2018	2019
Main scheme	Holding offer	20%	41%	15%	-6%	9%	1%	34%	22%	0%	16%
	Free to be placed in Clearing	84%	95%	60%	41%	40%	31%	24%	3%	0%	-1%

Note: The percentage change is not recorded in the above table for groups with fewer than 10 unplaced applicants in that cycle or in the 2018 cycle.

A.15 Direct to Clearing applicants from Wales: 12 days after A level results day

Direct to Clearing: difference between cycle and 2018 cycle



Note: The percentage change is not plotted in the above chart for groups with fewer than 30 placed applicants in any one cycle.

A.16 Direct to Clearing applicants from Wales: 12 days after A level results day

Direct to Clearing 12 days after A level results day

Applicant type	Status	2010	2011	2012	2013	2014	2015	2016	2017	2018	2019
Direct to Clearing	Placed (Direct to Clearing)	180	170	300	300	280	320	320	400	410	490
	Other (Direct to Clearing)	230	230	230	240	270	280	250	320	300	290

A.17 Direct to Clearing applicants from Wales: 12 days after A level results day

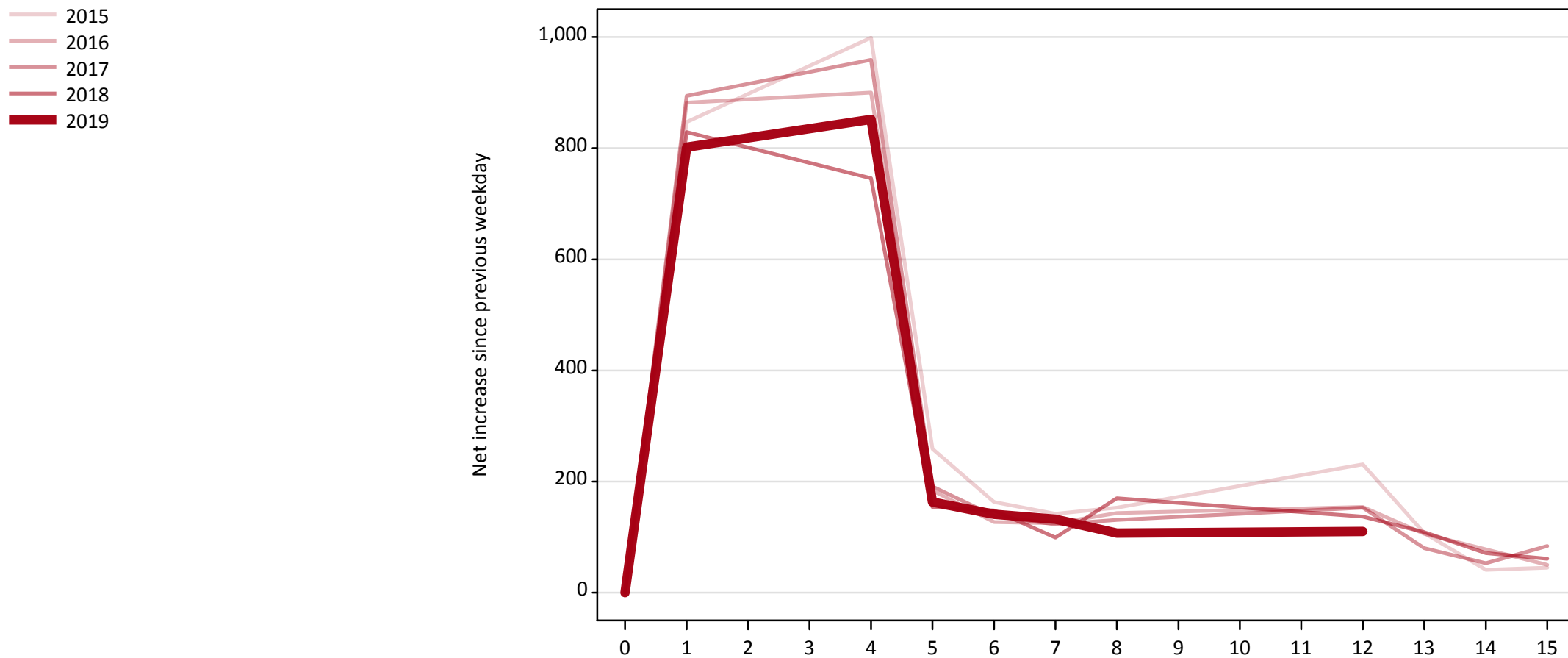
Direct to Clearing: difference between cycle and 2018 cycle

Applicant type	Status	2010	2011	2012	2013	2014	2015	2016	2017	2018	2019
Direct to Clearing	Placed (Direct to Clearing)	-56%	-58%	-26%	-27%	-31%	-21%	-21%	-3%	0%	20%
	Other (Direct to Clearing)	-24%	-25%	-23%	-21%	-11%	-7%	-16%	7%	0%	-3%

Note: The percentage change is not recorded in the above table for groups with fewer than 10 placed applicants in that cycle or in the 2018 cycle.

A.18 All Placed: Daily net change (from Wales)

Net increase since previous weekday (2019 cycle up to 12 days after A level results day)

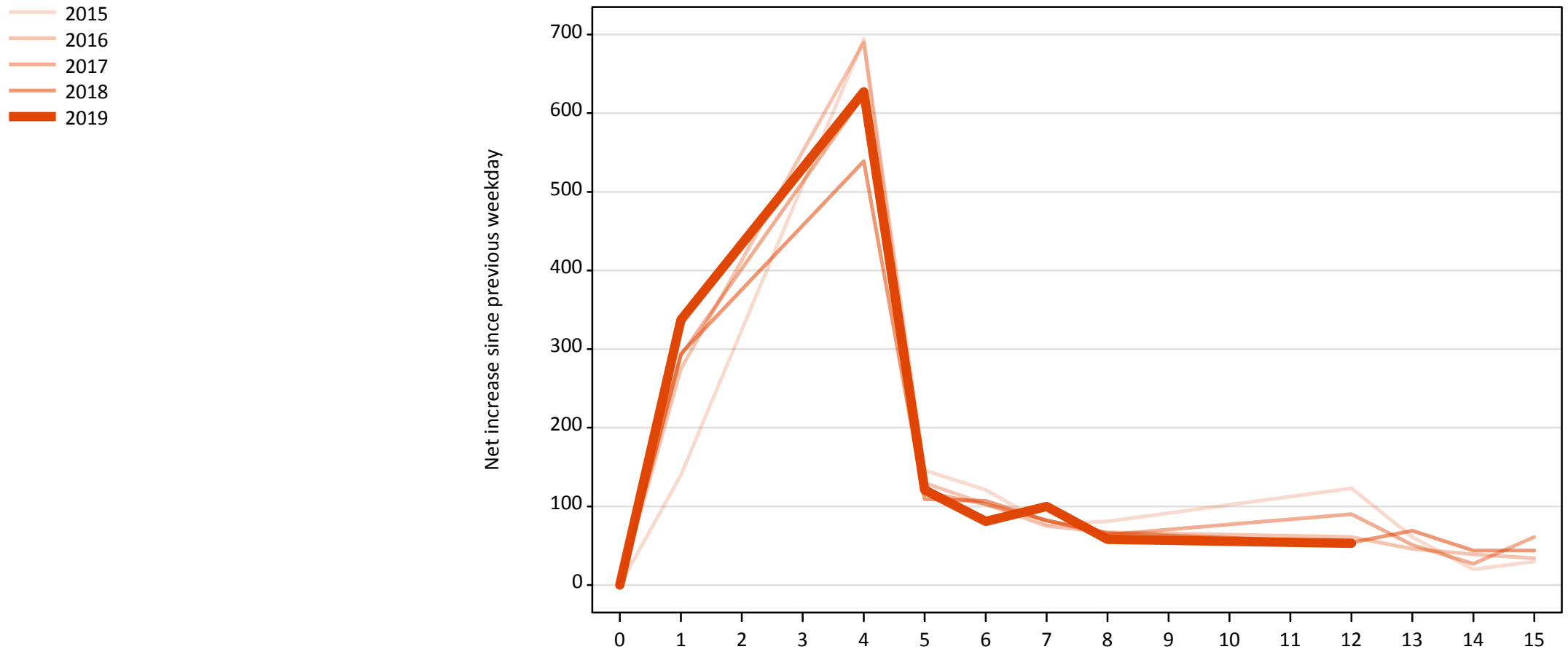


A.19 All Placed: Daily net change (from Wales)

Net increase since previous weekday (2019 cycle up to 12 days after A level results day)

Applicant status, days since A level results day		2015	2016	2017	2018	2019
All Placed	0	0	0	0	0	0
	1	850	880	890	830	800
	4	1,000	900	960	750	850
	5	260	180	190	150	160
	6	160	130	140	150	140
	7	140	130	120	100	130
	8	150	140	130	170	110
	12	230	150	150	140	110
	13	110	110	80	110	
	14	40	80	50	70	
	15	50	50	80	60	

A.20 Placed through Clearing only: Daily net change (from Wales)
Net increase since previous weekday (2019 cycle up to 12 days after A level results day)



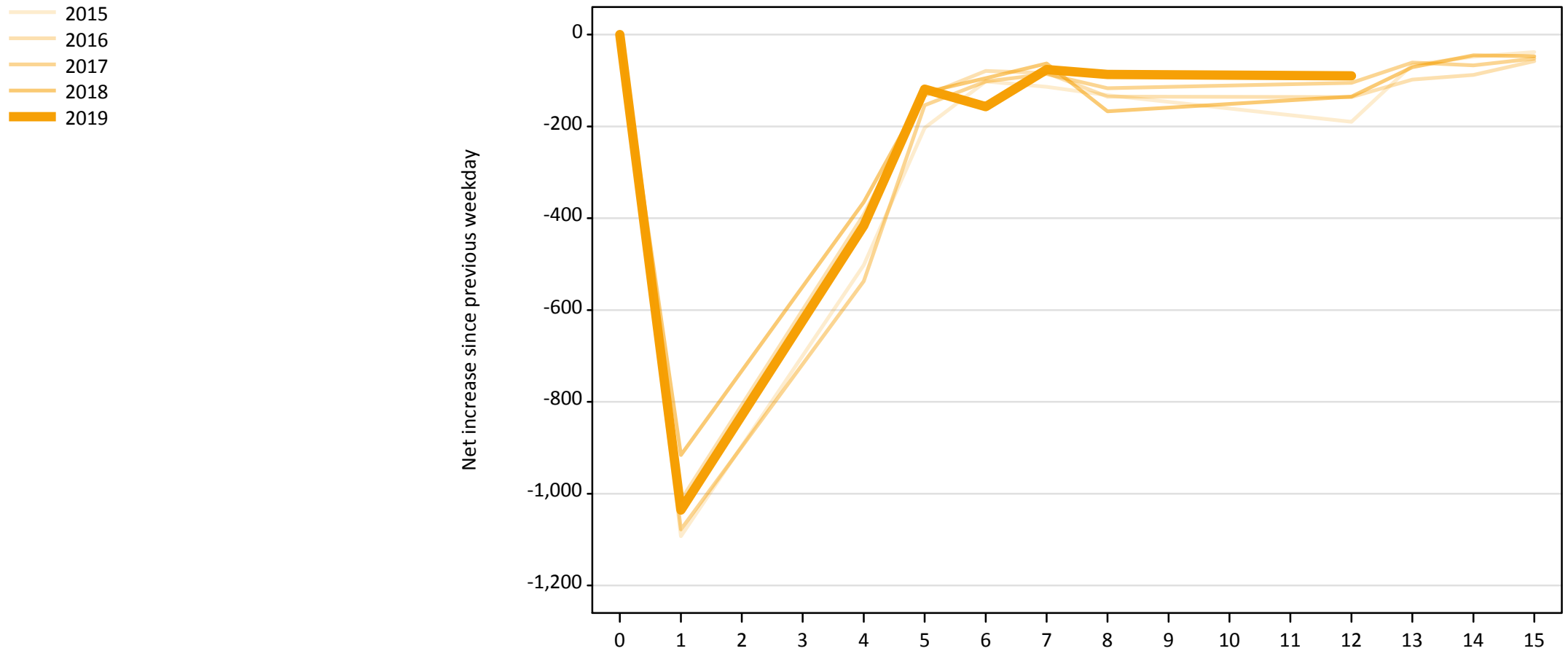
A.21 Placed through Clearing only: Daily net change (from Wales)

Net increase since previous weekday (2019 cycle up to 12 days after A level results day)

Applicant status, days since A level results day		2015	2016	2017	2018	2019
Placed through Clearing only	0	0	0	0	0	0
	1	140	280	290	290	340
	4	690	690	620	540	630
	5	150	130	120	110	120
	6	120	100	100	110	80
	7	80	80	80	80	100
	8	80	70	60	70	60
	12	120	60	90	50	50
	13	60	50	50	70	
	14	20	40	30	40	
	15	30	30	60	40	

A.22 Holding Offer: Daily net change (from Wales)

Net increase since previous weekday (2019 cycle up to 12 days after A level results day)



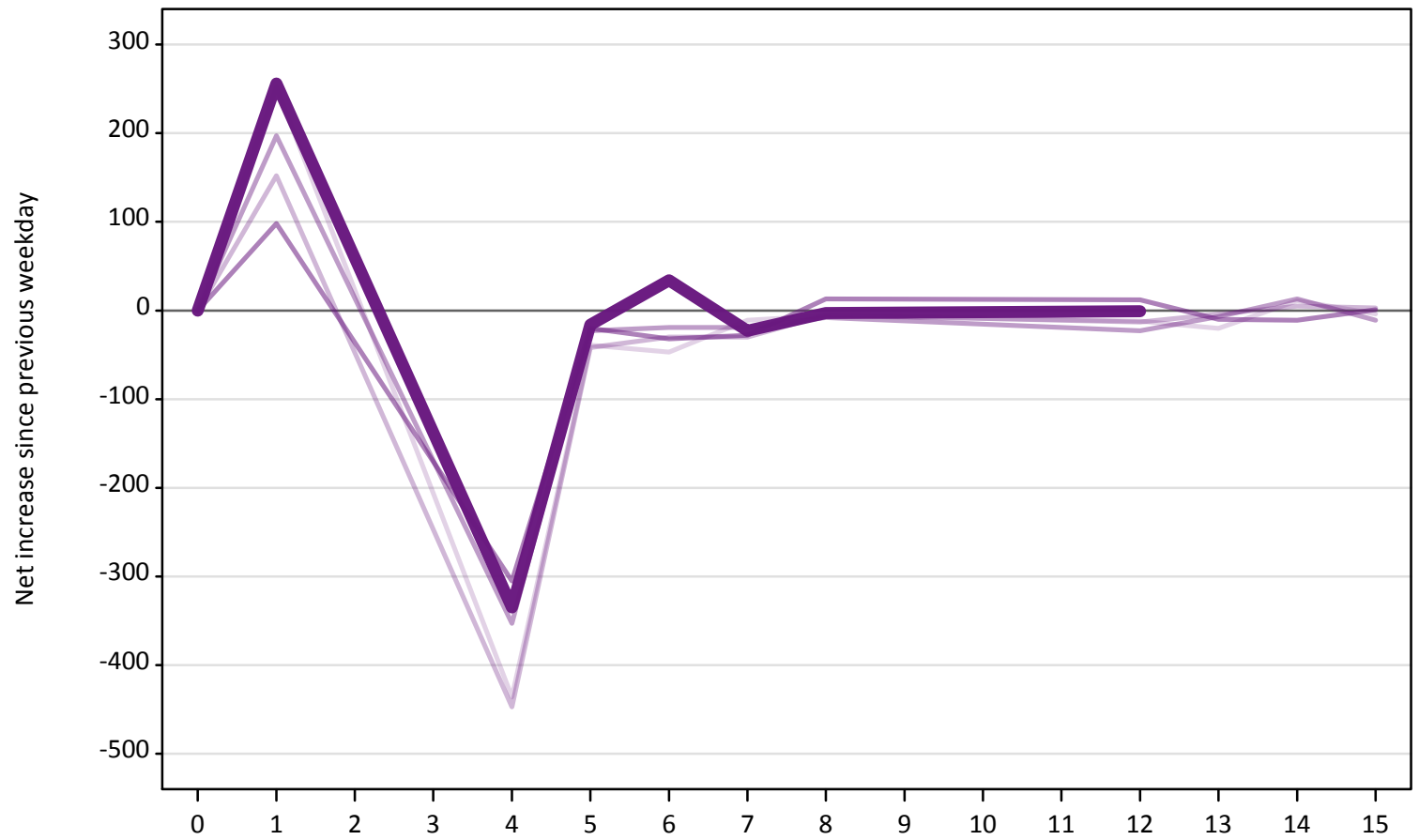
A.23 Holding Offer: Daily net change (from Wales)

Net increase since previous weekday (2019 cycle up to 12 days after A level results day)

Applicant status, days since A level results day		2015	2016	2017	2018	2019
Holding Offer	0	0	0	0	0	0
	1	-1,090	-1,010	-1,080	-920	-1,040
	4	-500	-390	-540	-370	-420
	5	-200	-130	-150	-130	-120
	6	-100	-80	-100	-100	-160
	7	-110	-80	-90	-60	-80
	8	-130	-140	-120	-170	-90
	12	-190	-140	-110	-140	-90
	13	-70	-100	-60	-70	
	14	-50	-90	-70	-50	
	15	-40	-60	-50	-50	

A.24 Free to be placed in Clearing: Daily net change (from Wales)
Net increase since previous weekday (2019 cycle up to 12 days after A level results day)

- 2015
- 2016
- 2017
- 2018
- 2019



A.25 Free to be placed in Clearing: Daily net change (from Wales)

Net increase since previous weekday (2019 cycle up to 12 days after A level results day)

Applicant status, days since A level results day		2015	2016	2017	2018	2019
Free to be placed in Clearing	0	0	0	0	0	0
	1	250	150	200	100	260
	4	-440	-450	-350	-310	-340
	5	-40	-40	-20	-20	-20
	6	-50	-30	-20	-30	30
	7	-10	-30	-20	-30	-20
	8	-10	-10	-10	10	0
	12	-10	-10	-20	10	0
	13	-20	0	-10	-10	
	14	10	10	10	-10	
	15	0	0	-10	0	