

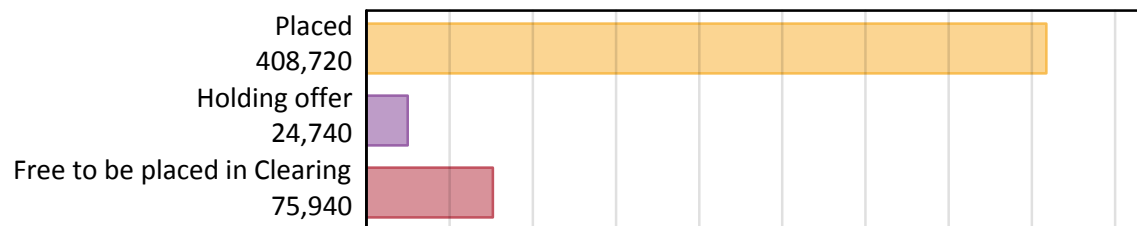
Daily Clearing Analysis: Overview

Analysis at 00:05 on Tuesday 27 August 2019 (12 days after A level results day)

A.1 Applicants by type and status from the UK, 2019 cycle

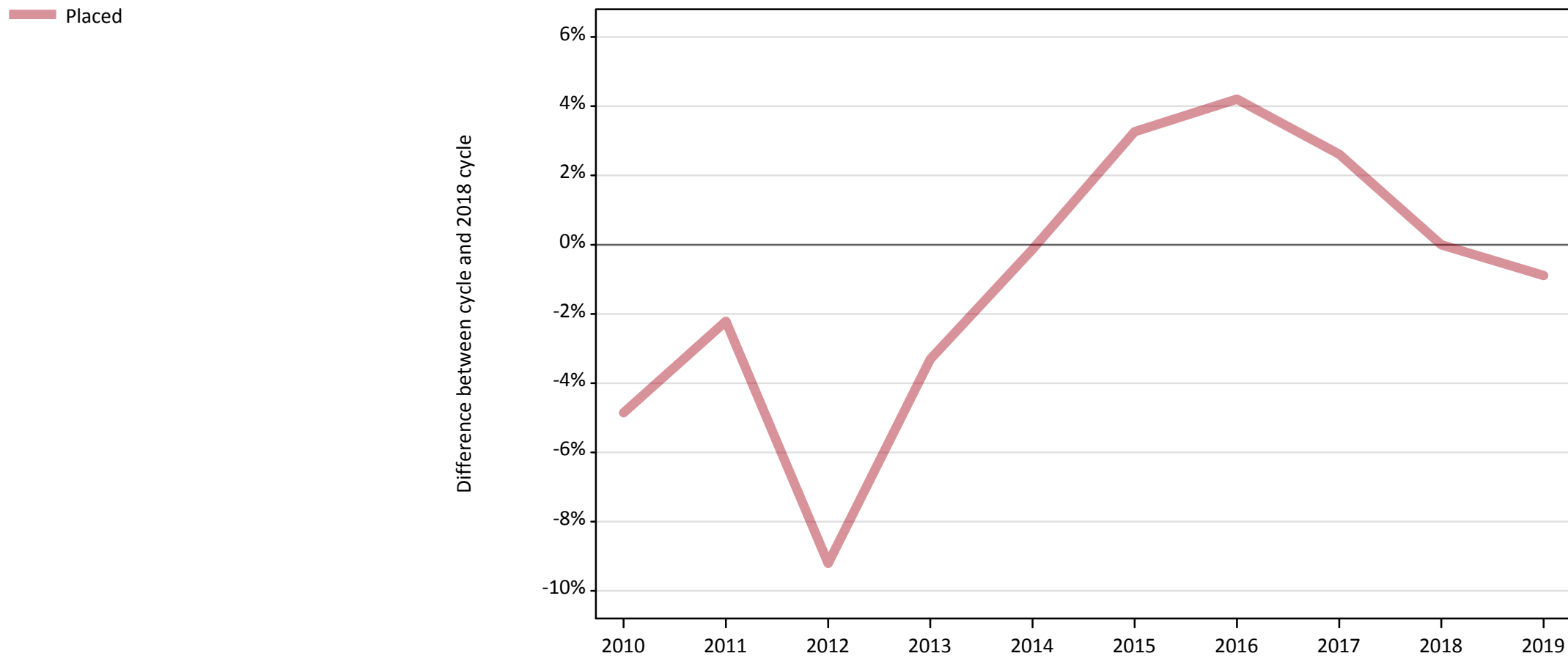
Applicant type	Status	2019
Main scheme	Placed (Clearing)	39,350
	Placed (Adjustment)	530
	Placed (Firm)	321,400
	Placed (Insurance)	27,790
	Placed (Other)	10,290
	Holding offer	24,740
	Free to be placed in Clearing	75,940
Direct to Clearing	Placed (Direct to Clearing)	9,360
	Other (Direct to Clearing)	7,470
All applicants	Placed	408,720

A.2 Summary of applicants who are placed, holding offers or free to be placed in Clearing (the UK)



A.3 All placed applicants from the UK: 12 days after A level results day

All placed applicants: difference between cycle and 2018 cycle



Note: The percentage change is not plotted in the above chart for groups with fewer than 30 placed applicants in any one cycle.

A.4 All placed applicants from the UK: 12 days after A level results day

All placed applicants: applicants at 12 days after A level results day

Applicant type	Status	2010	2011	2012	2013	2014	2015	2016	2017	2018	2019
All applicants	Placed	392,370	403,270	374,430	398,750	411,860	425,850	429,750	423,190	412,400	408,720

A.5 All placed applicants from the UK: 12 days after A level results day

All placed applicants: difference between cycle and 2018 cycle

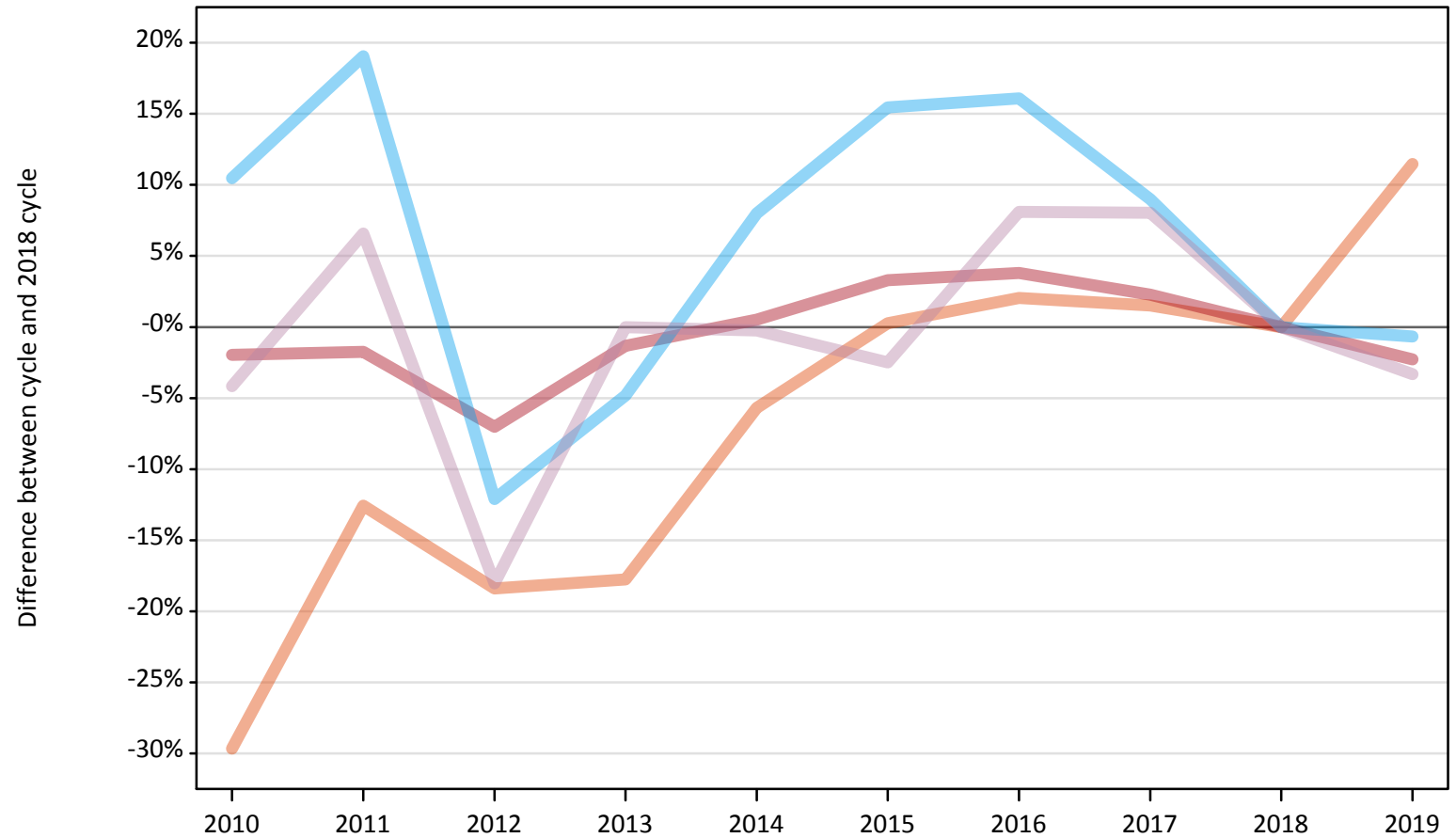
Applicant type	Status	2010	2011	2012	2013	2014	2015	2016	2017	2018	2019
All applicants	Placed	-5%	-2%	-9%	-3%	-0%	3%	4%	3%	0%	-1%

Note: The percentage change is not recorded in the above table for groups with fewer than 10 placed applicants in that cycle or in the 2018 cycle.

A.6 Placed main scheme applicants from the UK: 12 days after A level results day

All Main scheme placed routes (excluding Adjustment): difference between cycle and 2018 cycle

- Placed (Clearing)
- Placed (Firm)
- Placed (Insurance)
- Placed (Other)



Note: The percentage change is not plotted in the above chart for groups with fewer than 30 placed applicants in any one cycle.

A.7 Placed main scheme applicants from the UK: 12 days after A level results day

All Main scheme placed routes (excluding Adjustment): applicants at 12 days after A level results day

Applicant type	Status	2010	2011	2012	2013	2014	2015	2016	2017	2018	2019
Main scheme	Placed (Clearing)	24,830	30,860	28,800	29,030	33,290	35,390	36,020	35,830	35,300	39,350
	Placed (Firm)	322,450	323,110	305,760	324,500	330,610	339,700	341,390	336,340	328,880	321,400
	Placed (Insurance)	30,910	33,300	24,590	26,620	30,210	32,300	32,480	30,490	27,970	27,790
	Placed (Other)	10,200	11,350	8,730	10,640	10,620	10,380	11,510	11,500	10,650	10,290

A.8 Placed main scheme applicants from the UK: 12 days after A level results day

All Main scheme placed routes (excluding Adjustment): difference between cycle and 2018 cycle

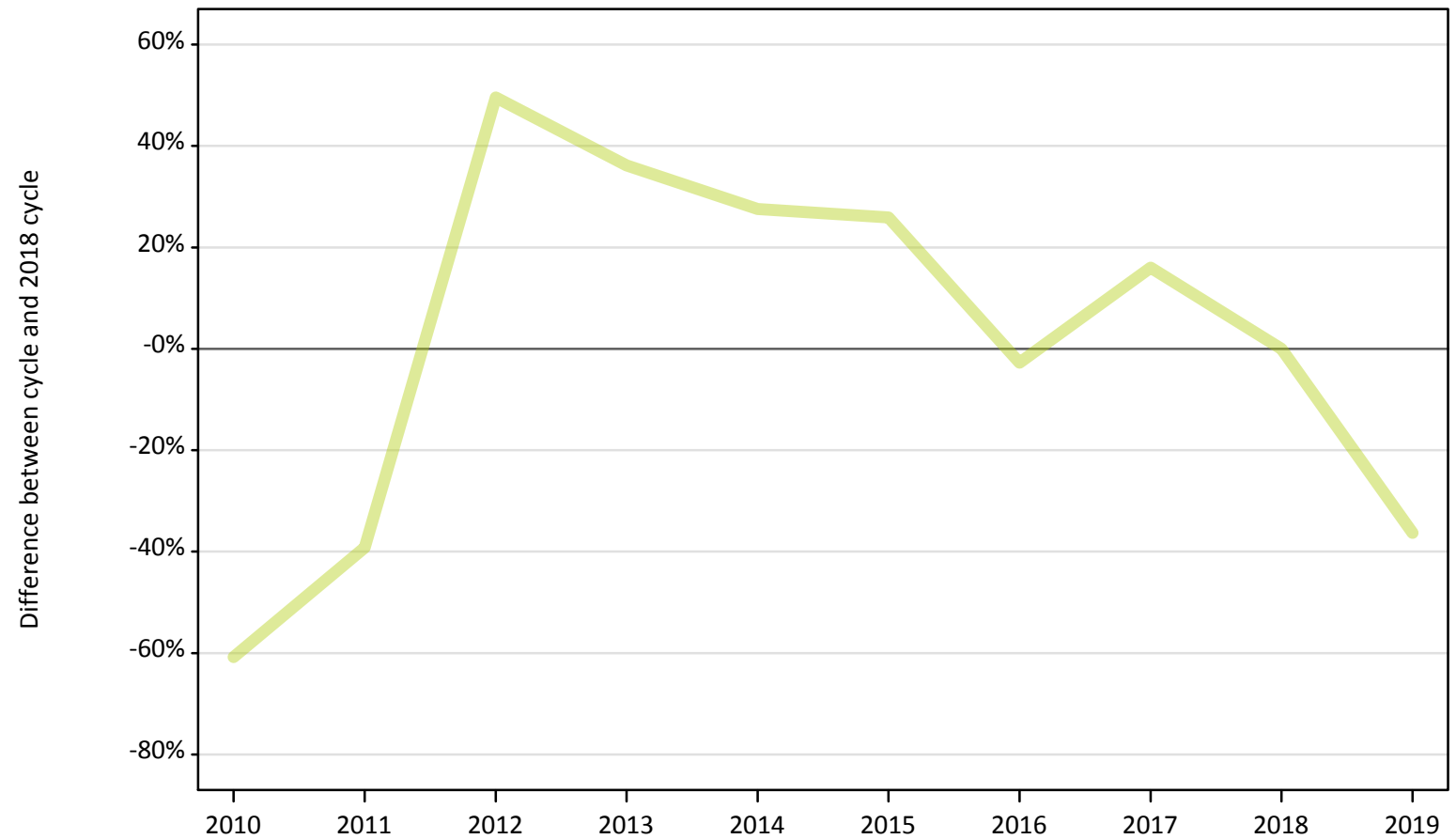
Applicant type	Status	2010	2011	2012	2013	2014	2015	2016	2017	2018	2019
Main scheme	Placed (Clearing)	-30%	-13%	-18%	-18%	-6%	0%	2%	2%	0%	11%
	Placed (Firm)	-2%	-2%	-7%	-1%	1%	3%	4%	2%	0%	-2%
	Placed (Insurance)	10%	19%	-12%	-5%	8%	15%	16%	9%	0%	-1%
	Placed (Other)	-4%	7%	-18%	-0%	-0%	-2%	8%	8%	0%	-3%

Note: The percentage change is not recorded in the above table for groups with fewer than 10 placed applicants in that cycle or in the 2018 cycle.

A.9 Main scheme applicants placed through adjustment: 12 days after A level results day

Placed through adjustment: difference between cycle and 2018 cycle

Placed (Adjustment)



Note: The percentage change is not plotted in the above chart for groups with fewer than 30 placed applicants in any one cycle.

A.10 Main scheme applicants placed through adjustment: 12 days after A level results day

Placed through adjustment: applicants at 12 days after A level results day

Applicant type	Status	2010	2011	2012	2013	2014	2015	2016	2017	2018	2019
Main scheme	Placed (Adjustment)	330	510	1,250	1,140	1,070	1,050	810	970	840	530

A.11 Main scheme applicants placed through adjustment: 12 days after A level results day

Placed through adjustment: difference between cycle and 2018 cycle

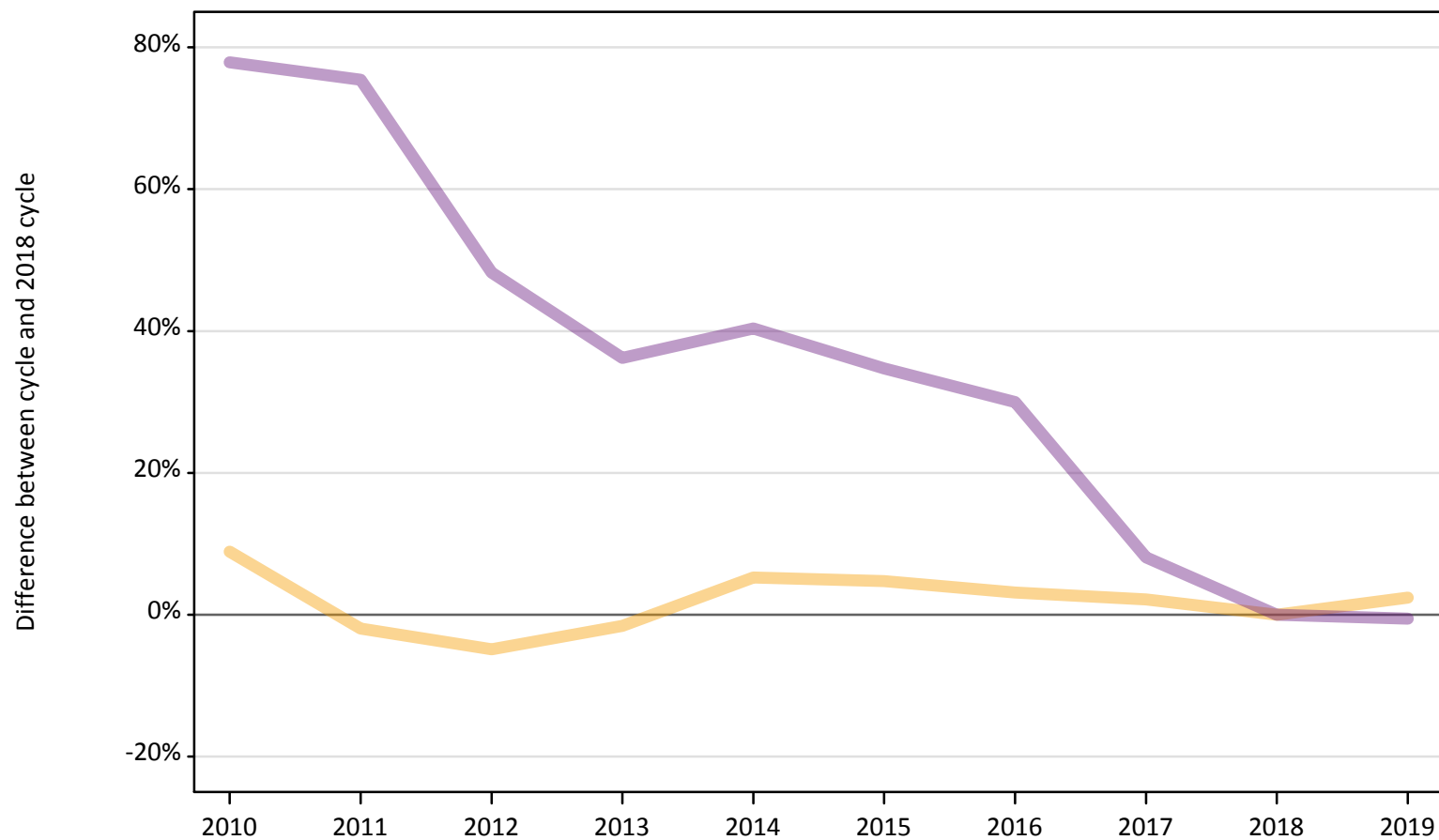
Applicant type	Status	2010	2011	2012	2013	2014	2015	2016	2017	2018	2019
Main scheme	Placed (Adjustment)	-61%	-39%	50%	36%	28%	26%	-3%	16%	0%	-36%

Note: The percentage change is not recorded in the above table for groups with fewer than 10 placed applicants in that cycle or in the 2018 cycle.

A.12 Main scheme applicants not currently placed from the UK: 12 days after A level results day

Applicants in unplaced states: difference between cycle and 2018 cycle

— Holding offer
— Free to be placed in Clearing



Note: The percentage change is not plotted in the above chart for groups with fewer than 30 unplaced applicants in any one cycle.

A.13 Main scheme applicants not currently placed from the UK: 12 days after A level results day

Applicants in unplaced states: applicants at 12 days after A level results day

Applicant type	Status	2010	2011	2012	2013	2014	2015	2016	2017	2018	2019
Main scheme	Holding offer	26,320	23,700	22,980	23,780	25,430	25,310	24,920	24,690	24,160	24,740
	Free to be placed in Clearing	135,830	133,940	113,180	104,000	107,160	102,860	99,240	82,530	76,350	75,940

A.14 Main scheme applicants not currently placed from the UK: 12 days after A level results day

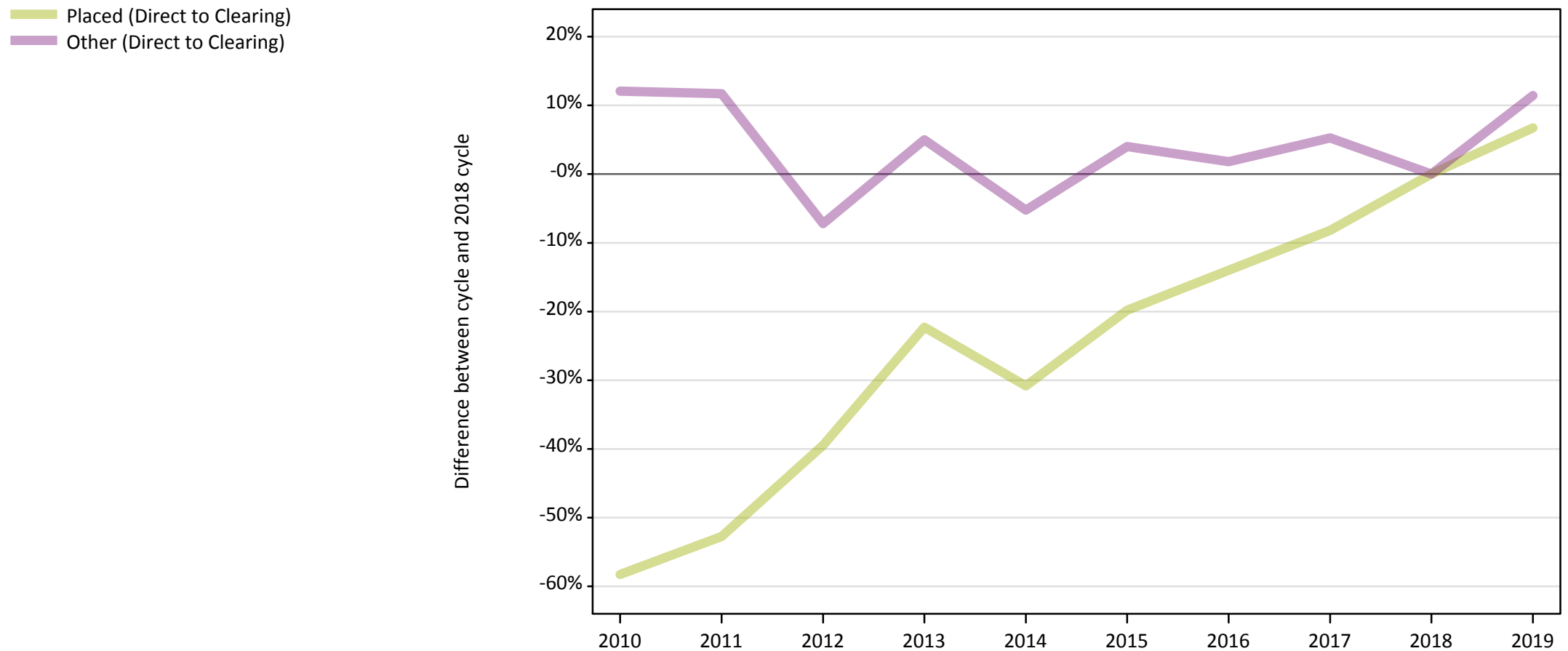
Applicants in unplaced states: difference between cycle and 2018 cycle

Applicant type	Status	2010	2011	2012	2013	2014	2015	2016	2017	2018	2019
Main scheme	Holding offer	9%	-2%	-5%	-2%	5%	5%	3%	2%	0%	2%
	Free to be placed in Clearing	78%	75%	48%	36%	40%	35%	30%	8%	0%	-1%

Note: The percentage change is not recorded in the above table for groups with fewer than 10 unplaced applicants in that cycle or in the 2018 cycle.

A.15 Direct to Clearing applicants from the UK: 12 days after A level results day

Direct to Clearing: difference between cycle and 2018 cycle



Note: The percentage change is not plotted in the above chart for groups with fewer than 30 placed applicants in any one cycle.

A.16 Direct to Clearing applicants from the UK: 12 days after A level results day

Direct to Clearing 12 days after A level results day

Applicant type	Status	2010	2011	2012	2013	2014	2015	2016	2017	2018	2019
Direct to Clearing	Placed (Direct to Clearing)	3,660	4,140	5,310	6,810	6,060	7,030	7,540	8,050	8,770	9,360
	Other (Direct to Clearing)	7,520	7,490	6,220	7,040	6,360	6,980	6,830	7,060	6,710	7,470

A.17 Direct to Clearing applicants from the UK: 12 days after A level results day

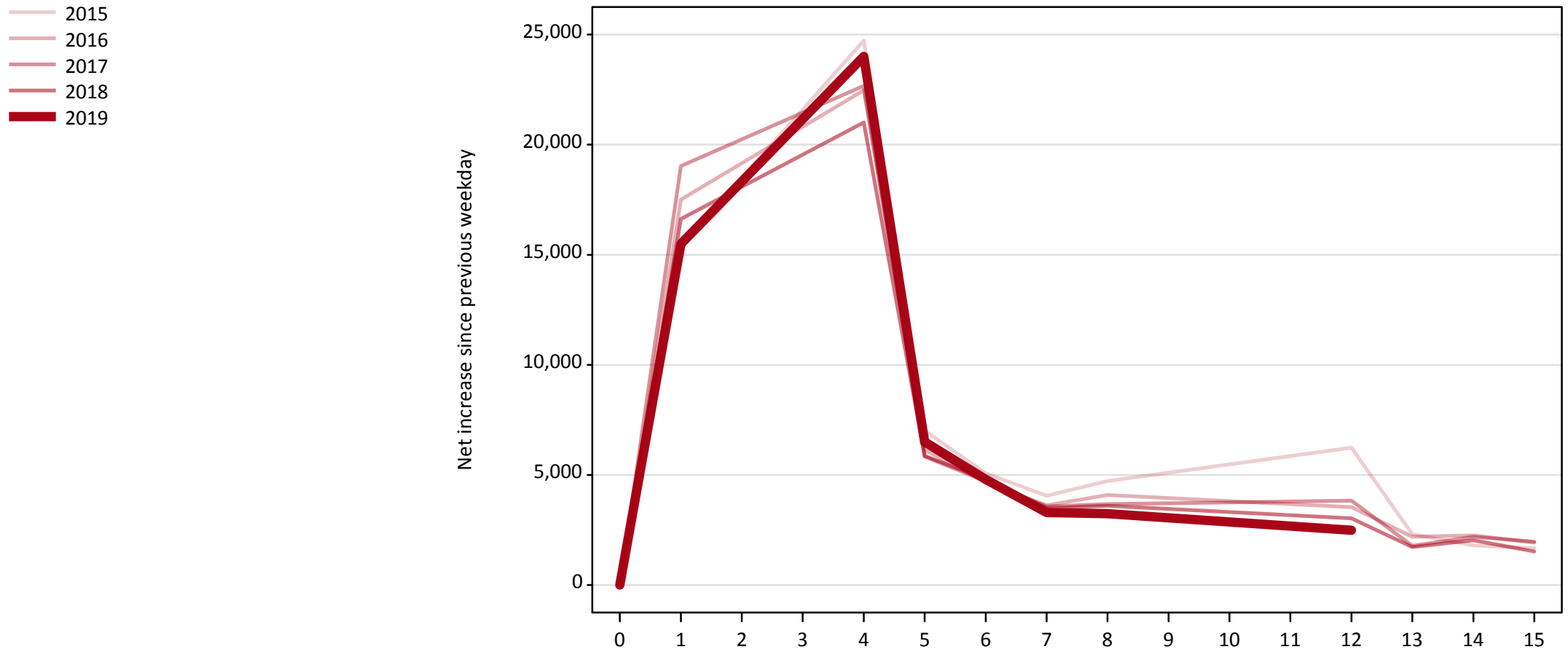
Direct to Clearing: difference between cycle and 2018 cycle

Applicant type	Status	2010	2011	2012	2013	2014	2015	2016	2017	2018	2019
Direct to Clearing	Placed (Direct to Clearing)	-58%	-53%	-39%	-22%	-31%	-20%	-14%	-8%	0%	7%
	Other (Direct to Clearing)	12%	12%	-7%	5%	-5%	4%	2%	5%	0%	11%

Note: The percentage change is not recorded in the above table for groups with fewer than 10 placed applicants in that cycle or in the 2018 cycle.

A.18 All Placed: Daily net change (from the UK)

Net increase since previous weekday (2019 cycle up to 12 days after A level results day)

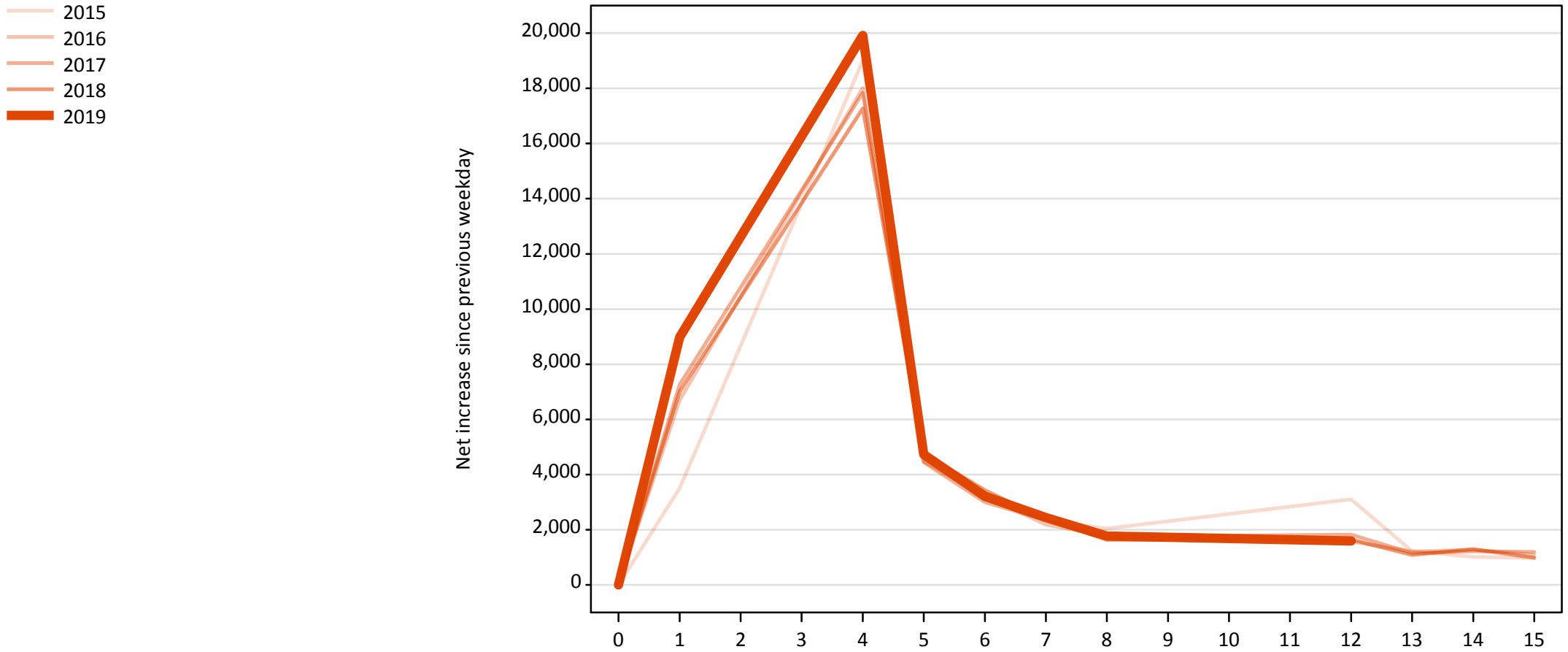


A.19 All Placed: Daily net change (from the UK)

Net increase since previous weekday (2019 cycle up to 12 days after A level results day)

Applicant status, days since A level results day		2015	2016	2017	2018	2019
All Placed	0	0	0	0	0	0
	1	15,350	17,510	19,030	16,620	15,490
	4	24,730	22,470	22,670	21,010	24,010
	5	7,020	6,140	5,840	5,870	6,510
	6	5,070	4,660	4,710	4,810	4,800
	7	4,060	3,630	3,570	3,500	3,300
	8	4,720	4,090	3,670	3,600	3,240
	12	6,240	3,530	3,840	3,020	2,490
	13	2,310	2,200	1,780	1,720	
	14	1,810	2,260	2,200	2,030	
	15	1,680	1,920	1,970	1,530	

A.20 Placed through Clearing only: Daily net change (from the UK)
Net increase since previous weekday (2019 cycle up to 12 days after A level results day)

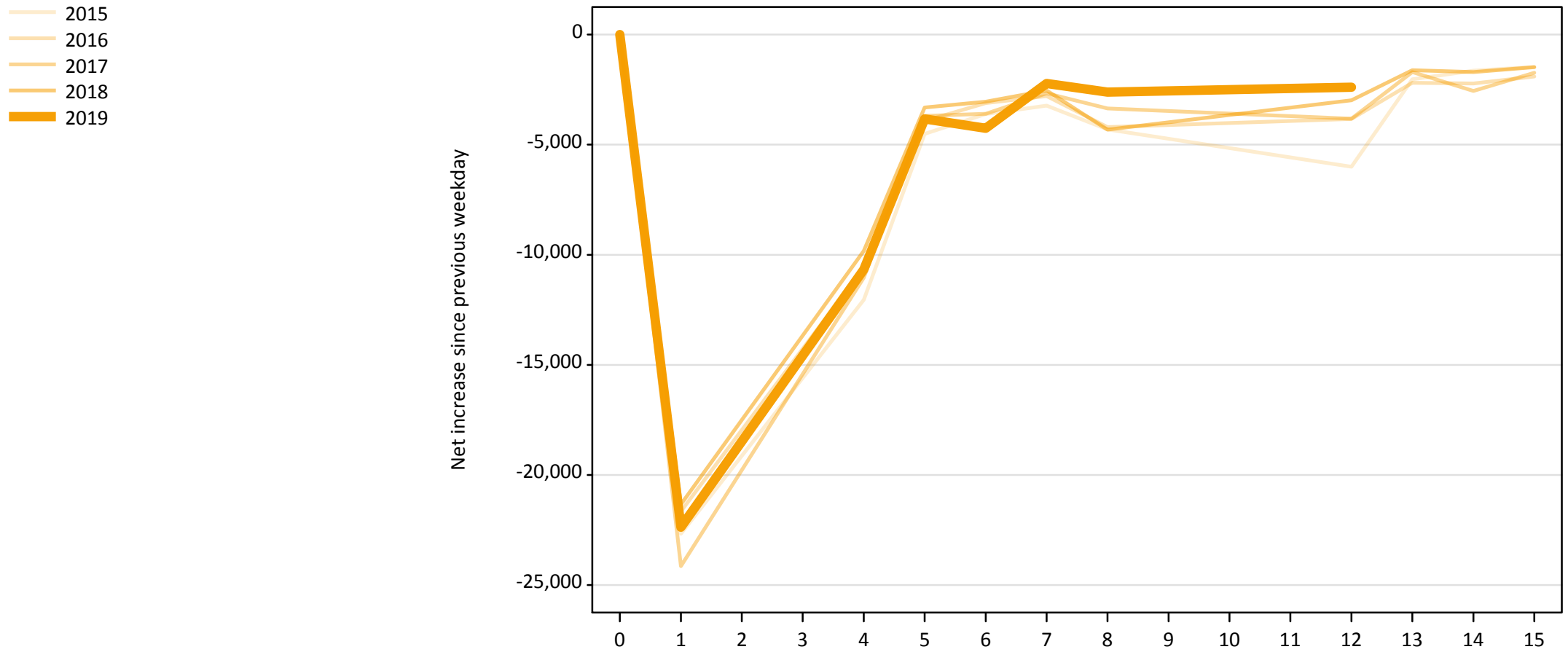


A.21 Placed through Clearing only: Daily net change (from the UK)

Net increase since previous weekday (2019 cycle up to 12 days after A level results day)

Applicant status, days since A level results day		2015	2016	2017	2018	2019
Placed through Clearing only	0	0	0	0	0	0
	1	3,510	6,700	7,260	7,010	8,980
	4	19,000	18,010	17,840	17,270	19,910
	5	4,820	4,470	4,450	4,770	4,730
	6	3,170	3,220	3,000	3,430	3,210
	7	2,350	2,180	2,360	2,370	2,440
	8	2,040	1,780	1,740	1,640	1,770
	12	3,100	1,570	1,820	1,640	1,600
	13	1,220	1,210	1,150	1,080	
	14	1,020	1,270	1,220	1,300	
	15	980	1,090	1,200	980	

A.22 Holding Offer: Daily net change (from the UK)
Net increase since previous weekday (2019 cycle up to 12 days after A level results day)

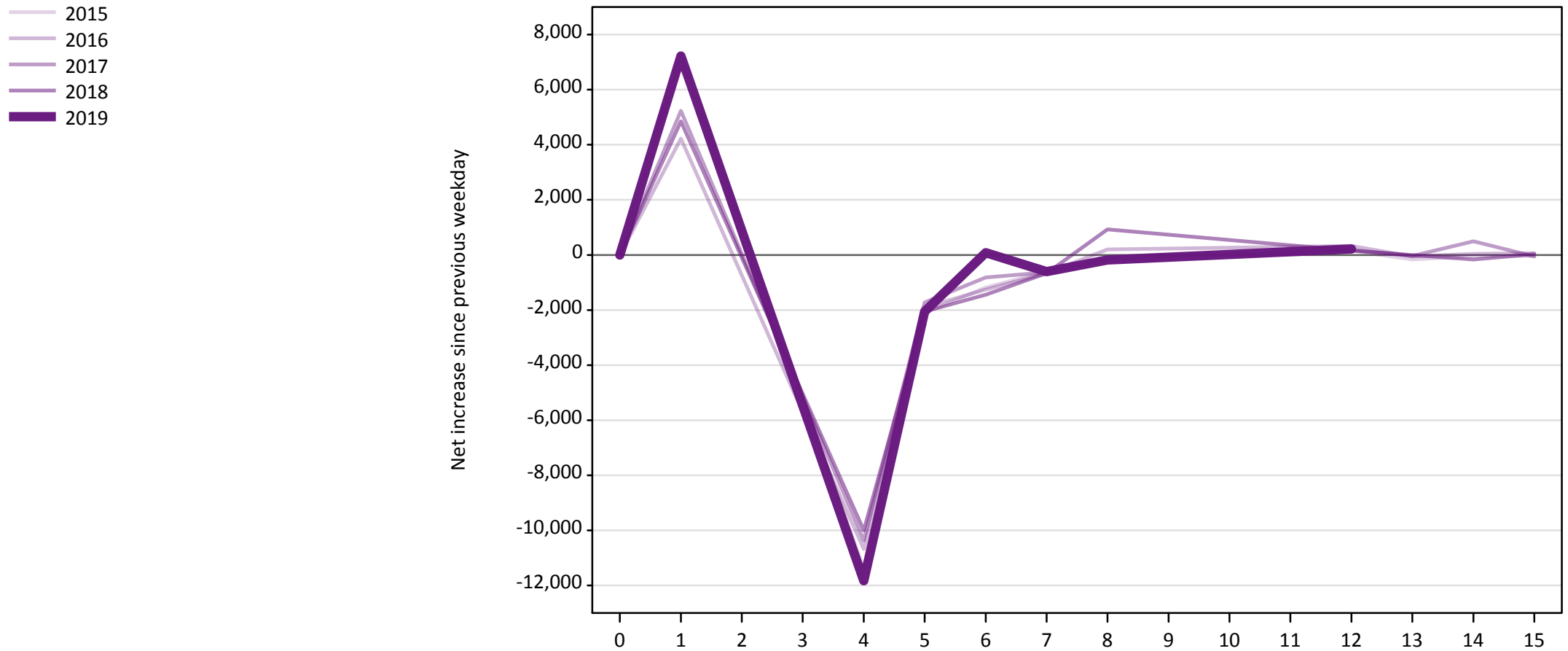


A.23 Holding Offer: Daily net change (from the UK)

Net increase since previous weekday (2019 cycle up to 12 days after A level results day)

Applicant status, days since A level results day		2015	2016	2017	2018	2019
Holding Offer	0	0	0	0	0	0
	1	-22,670	-21,650	-24,140	-21,330	-22,370
	4	-12,050	-10,570	-11,040	-9,830	-10,670
	5	-4,510	-3,920	-3,690	-3,320	-3,840
	6	-3,610	-3,110	-3,600	-3,040	-4,250
	7	-3,230	-2,790	-2,670	-2,540	-2,220
	8	-4,310	-4,200	-3,360	-4,320	-2,620
	12	-6,000	-3,830	-3,830	-2,980	-2,390
	13	-2,030	-2,190	-1,700	-1,620	
	14	-1,640	-2,220	-2,560	-1,700	
	15	-1,470	-1,900	-1,740	-1,480	

A.24 Free to be placed in Clearing: Daily net change (from the UK)
Net increase since previous weekday (2019 cycle up to 12 days after A level results day)



A.25 Free to be placed in Clearing: Daily net change (from the UK)

Net increase since previous weekday (2019 cycle up to 12 days after A level results day)

Applicant status, days since A level results day		2015	2016	2017	2018	2019
Free to be placed in Clearing	0	0	0	0	0	0
	1	7,260	4,220	5,230	4,850	7,220
	4	-11,400	-10,680	-10,370	-10,000	-11,830
	5	-2,100	-1,900	-1,730	-2,050	-2,060
	6	-1,180	-1,260	-820	-1,450	80
	7	-610	-660	-630	-660	-610
	8	-150	200	-130	920	-180
	12	150	320	190	160	220
	13	-170	-50	-40	0	
	14	-50	40	500	-160	
	15	-40	60	-50	30	