

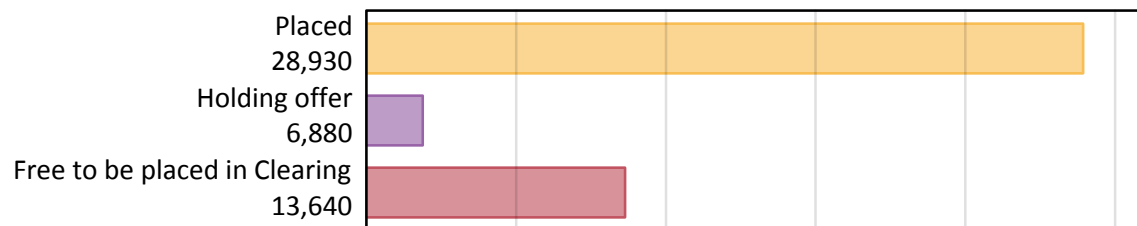
Daily Clearing Analysis: Overview

Analysis at 00:05 on Tuesday 27 August 2019 (12 days after A level results day)

A.1 Applicants by type and status from the EU - excluding UK, 2019 cycle

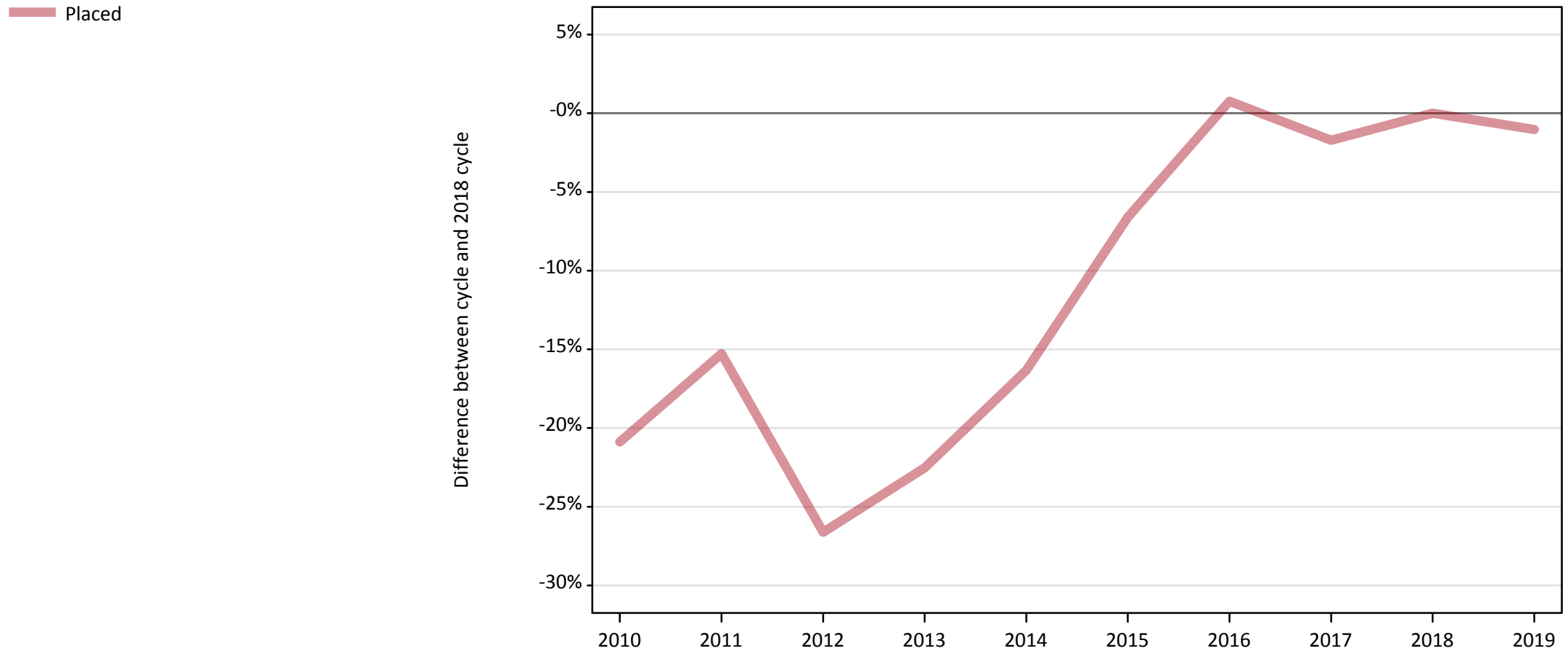
Applicant type	Status	2019
Main scheme	Placed (Clearing)	1,420
	Placed (Adjustment)	20
	Placed (Firm)	23,740
	Placed (Insurance)	2,100
	Placed (Other)	1,250
	Holding offer	6,880
	Free to be placed in Clearing	13,640
Direct to Clearing	Placed (Direct to Clearing)	400
	Other (Direct to Clearing)	400
All applicants	Placed	28,930

A.2 Summary of applicants who are placed, holding offers or free to be placed in Clearing (the EU - excluding UK)



A.3 All placed applicants from the EU - excluding UK: 12 days after A level results day

All placed applicants: difference between cycle and 2018 cycle



Note: The percentage change is not plotted in the above chart for groups with fewer than 30 placed applicants in any one cycle.

A.4 All placed applicants from the EU - excluding UK: 12 days after A level results day

All placed applicants: applicants at 12 days after A level results day

Applicant type	Status	2010	2011	2012	2013	2014	2015	2016	2017	2018	2019
All applicants	Placed	23,130	24,770	21,450	22,650	24,460	27,300	29,460	28,730	29,230	28,930

A.5 All placed applicants from the EU - excluding UK: 12 days after A level results day

All placed applicants: difference between cycle and 2018 cycle

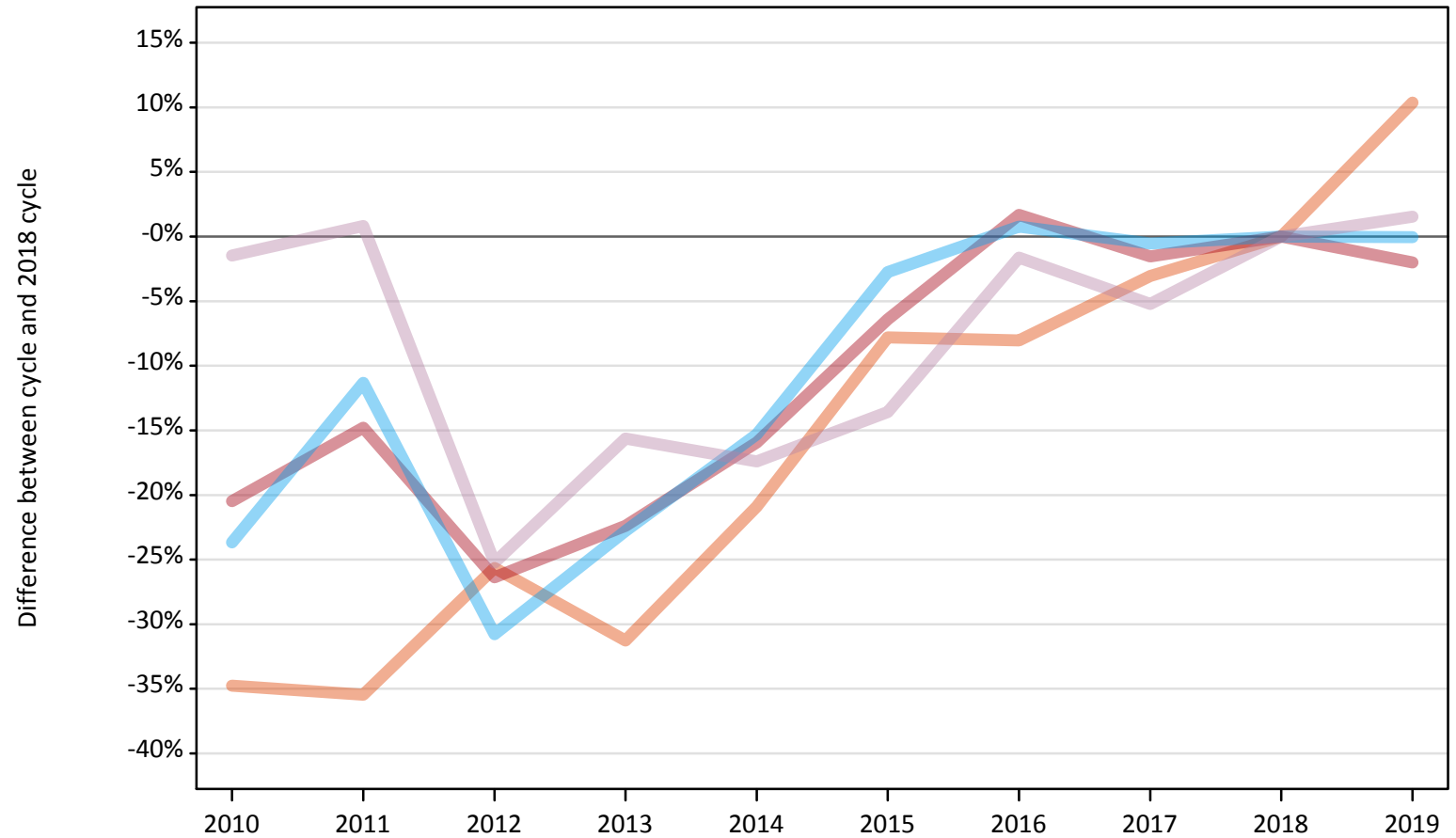
Applicant type	Status	2010	2011	2012	2013	2014	2015	2016	2017	2018	2019
All applicants	Placed	-21%	-15%	-27%	-23%	-16%	-7%	1%	-2%	0%	-1%

Note: The percentage change is not recorded in the above table for groups with fewer than 10 placed applicants in that cycle or in the 2018 cycle.

A.6 Placed main scheme applicants from the EU - excluding UK: 12 days after A level results day

All Main scheme placed routes (excluding Adjustment): difference between cycle and 2018 cycle

- Placed (Clearing)
- Placed (Firm)
- Placed (Insurance)
- Placed (Other)



Note: The percentage change is not plotted in the above chart for groups with fewer than 30 placed applicants in any one cycle.

A.7 Placed main scheme applicants from the EU - excluding UK: 12 days after A level results day

All Main scheme placed routes (excluding Adjustment): applicants at 12 days after A level results day

Applicant type	Status	2010	2011	2012	2013	2014	2015	2016	2017	2018	2019
Main scheme	Placed (Clearing)	840	830	950	880	1,020	1,180	1,180	1,240	1,280	1,420
	Placed (Firm)	19,270	20,640	17,840	18,810	20,370	22,680	24,640	23,850	24,230	23,740
	Placed (Insurance)	1,610	1,870	1,460	1,620	1,780	2,050	2,120	2,090	2,100	2,100
	Placed (Other)	1,210	1,240	920	1,040	1,020	1,060	1,210	1,170	1,230	1,250

A.8 Placed main scheme applicants from the EU - excluding UK: 12 days after A level results day

All Main scheme placed routes (excluding Adjustment): difference between cycle and 2018 cycle

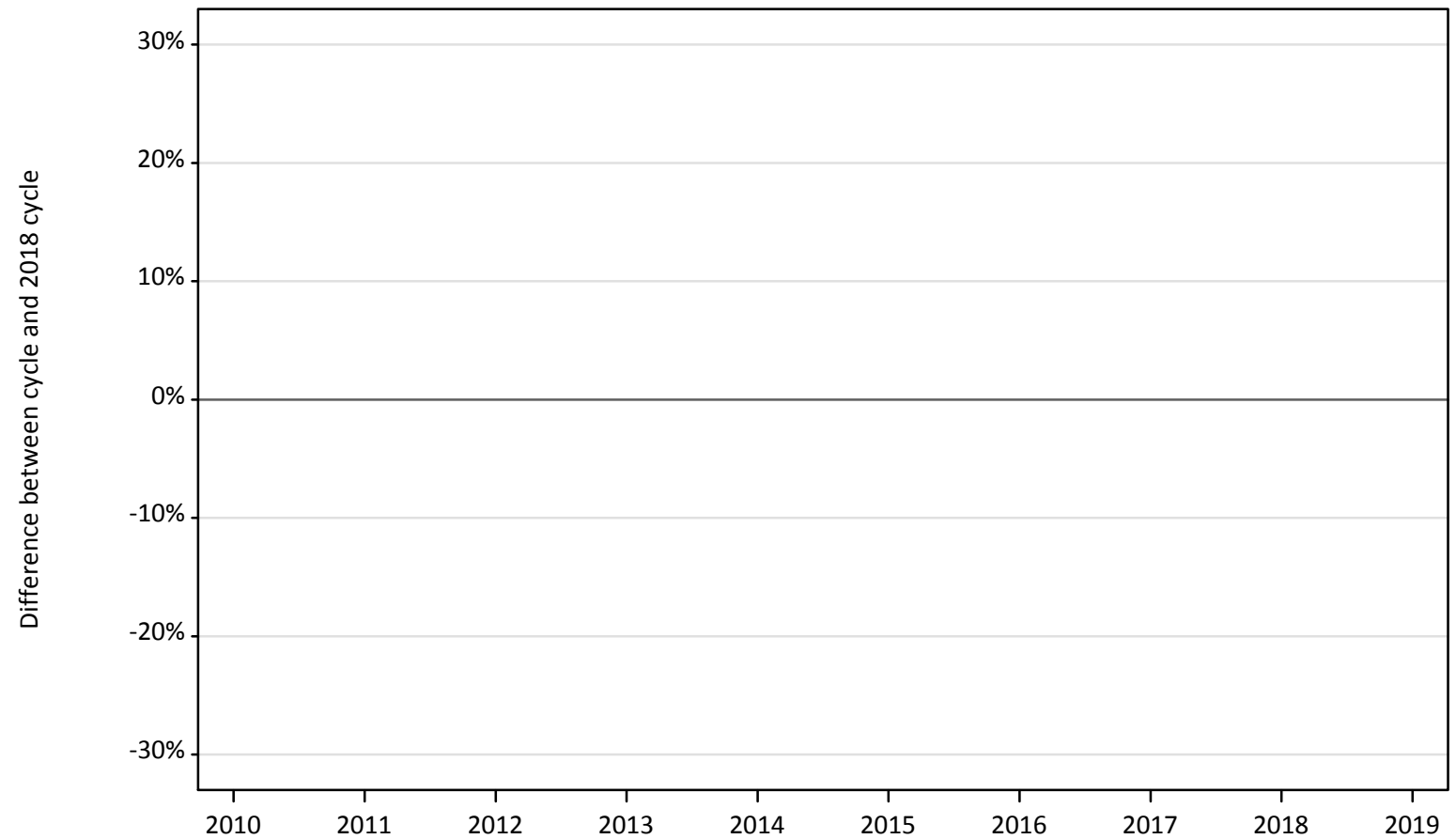
Applicant type	Status	2010	2011	2012	2013	2014	2015	2016	2017	2018	2019
Main scheme	Placed (Clearing)	-35%	-35%	-26%	-31%	-21%	-8%	-8%	-3%	0%	10%
	Placed (Firm)	-20%	-15%	-26%	-22%	-16%	-6%	2%	-2%	0%	-2%
	Placed (Insurance)	-24%	-11%	-31%	-23%	-15%	-3%	1%	-1%	0%	-0%
	Placed (Other)	-1%	1%	-25%	-16%	-17%	-14%	-2%	-5%	0%	2%

Note: The percentage change is not recorded in the above table for groups with fewer than 10 placed applicants in that cycle or in the 2018 cycle.

A.9 Main scheme applicants placed through adjustment: 12 days after A level results day

Placed through adjustment: difference between cycle and 2018 cycle

Placed (Adjustment)



Note: The percentage change is not plotted in the above chart for groups with fewer than 30 placed applicants in any one cycle.

A.10 Main scheme applicants placed through adjustment: 12 days after A level results day

Placed through adjustment: applicants at 12 days after A level results day

Applicant type	Status	2010	2011	2012	2013	2014	2015	2016	2017	2018	2019
Main scheme	Placed (Adjustment)	10	10	40	40	40	40	40	40	30	20

A.11 Main scheme applicants placed through adjustment: 12 days after A level results day

Placed through adjustment: difference between cycle and 2018 cycle

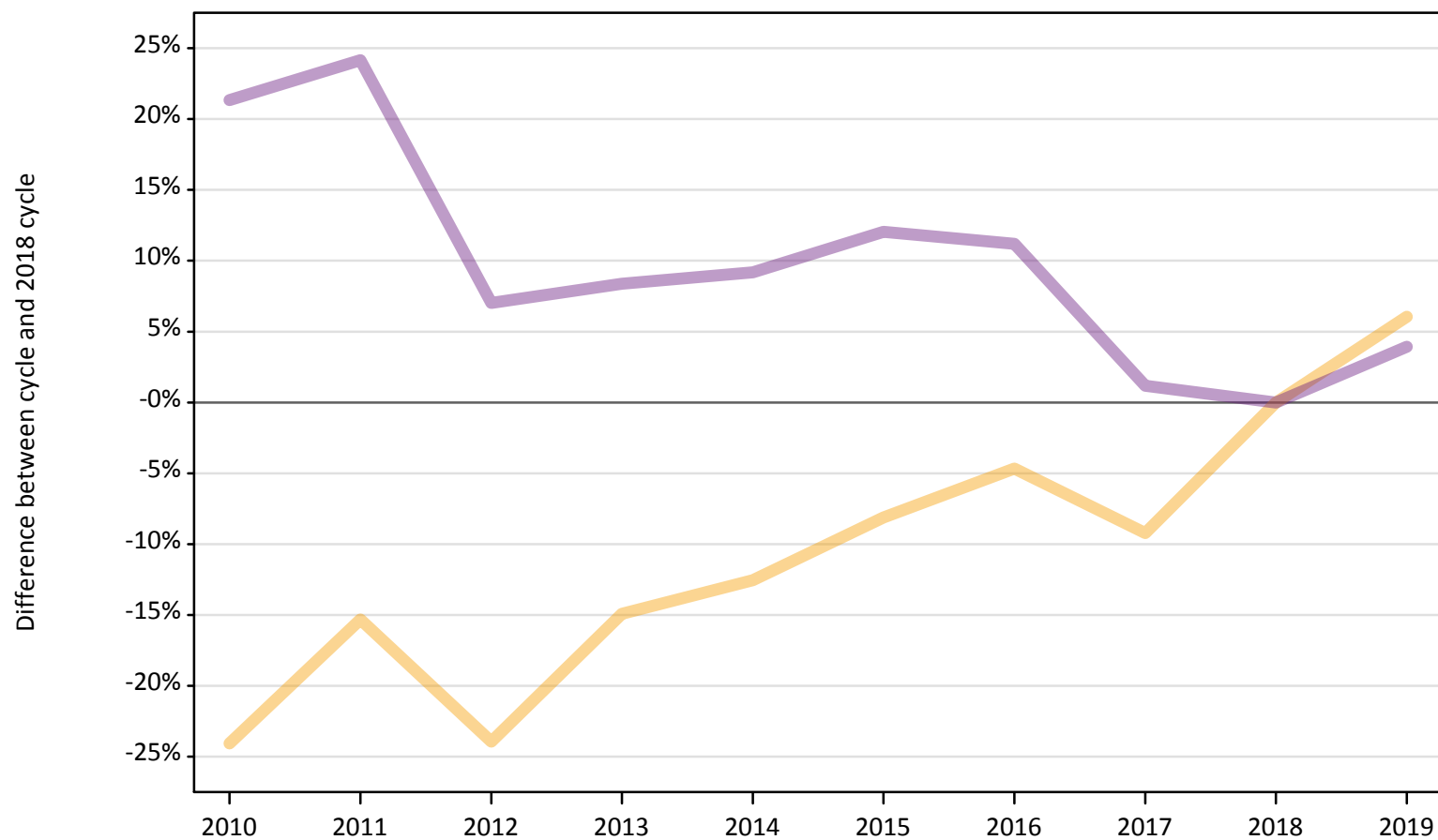
Applicant type	Status	2010	2011	2012	2013	2014	2015	2016	2017	2018	2019
Main scheme	Placed (Adjustment)	-52%	-59%	33%	37%	33%	44%	41%	56%	0%	-26%

Note: The percentage change is not recorded in the above table for groups with fewer than 10 placed applicants in that cycle or in the 2018 cycle.

A.12 Main scheme applicants not currently placed from the EU - excluding UK: 12 days after A level results day

Applicants in unplaced states: difference between cycle and 2018 cycle

— Holding offer
— Free to be placed in Clearing



Note: The percentage change is not plotted in the above chart for groups with fewer than 30 unplaced applicants in any one cycle.

A.13 Main scheme applicants not currently placed from the EU - excluding UK: 12 days after A level results day

Applicants in unplaced states: applicants at 12 days after A level results day

Applicant type	Status	2010	2011	2012	2013	2014	2015	2016	2017	2018	2019
Main scheme	Holding offer	4,930	5,500	4,940	5,520	5,680	5,960	6,190	5,890	6,490	6,880
	Free to be placed in Clearing	15,920	16,290	14,040	14,220	14,320	14,700	14,590	13,270	13,120	13,640

A.14 Main scheme applicants not currently placed from the EU - excluding UK: 12 days after A level results day

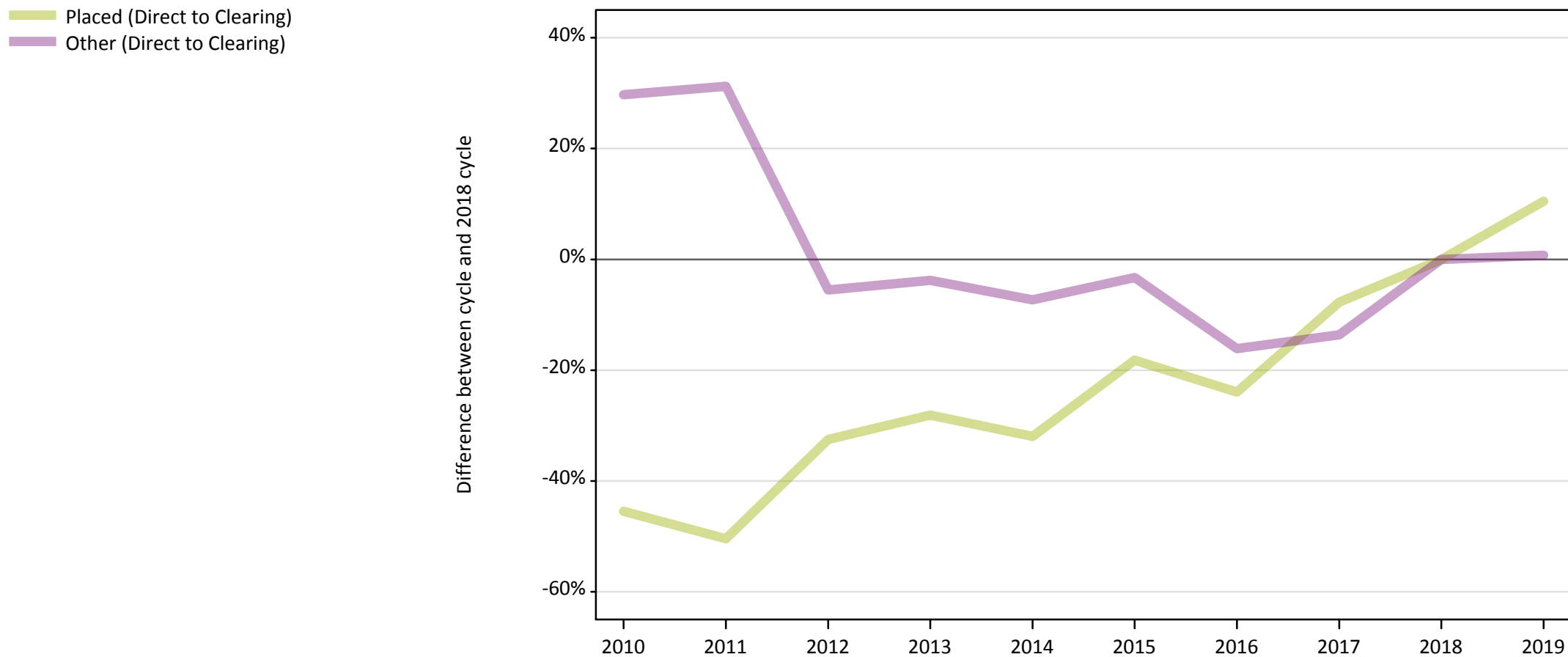
Applicants in unplaced states: difference between cycle and 2018 cycle

Applicant type	Status	2010	2011	2012	2013	2014	2015	2016	2017	2018	2019
Main scheme	Holding offer	-24%	-15%	-24%	-15%	-13%	-8%	-5%	-9%	0%	6%
	Free to be placed in Clearing	21%	24%	7%	8%	9%	12%	11%	1%	0%	4%

Note: The percentage change is not recorded in the above table for groups with fewer than 10 unplaced applicants in that cycle or in the 2018 cycle.

A.15 Direct to Clearing applicants from the EU - excluding UK: 12 days after A level results day

Direct to Clearing: difference between cycle and 2018 cycle



Note: The percentage change is not plotted in the above chart for groups with fewer than 30 placed applicants in any one cycle.

A.16 Direct to Clearing applicants from the EU - excluding UK: 12 days after A level results day

Direct to Clearing 12 days after A level results day

Applicant type	Status	2010	2011	2012	2013	2014	2015	2016	2017	2018	2019
Direct to Clearing	Placed (Direct to Clearing)	200	180	250	260	250	300	280	340	360	400
	Other (Direct to Clearing)	520	520	380	380	370	380	330	340	400	400

A.17 Direct to Clearing applicants from the EU - excluding UK: 12 days after A level results day

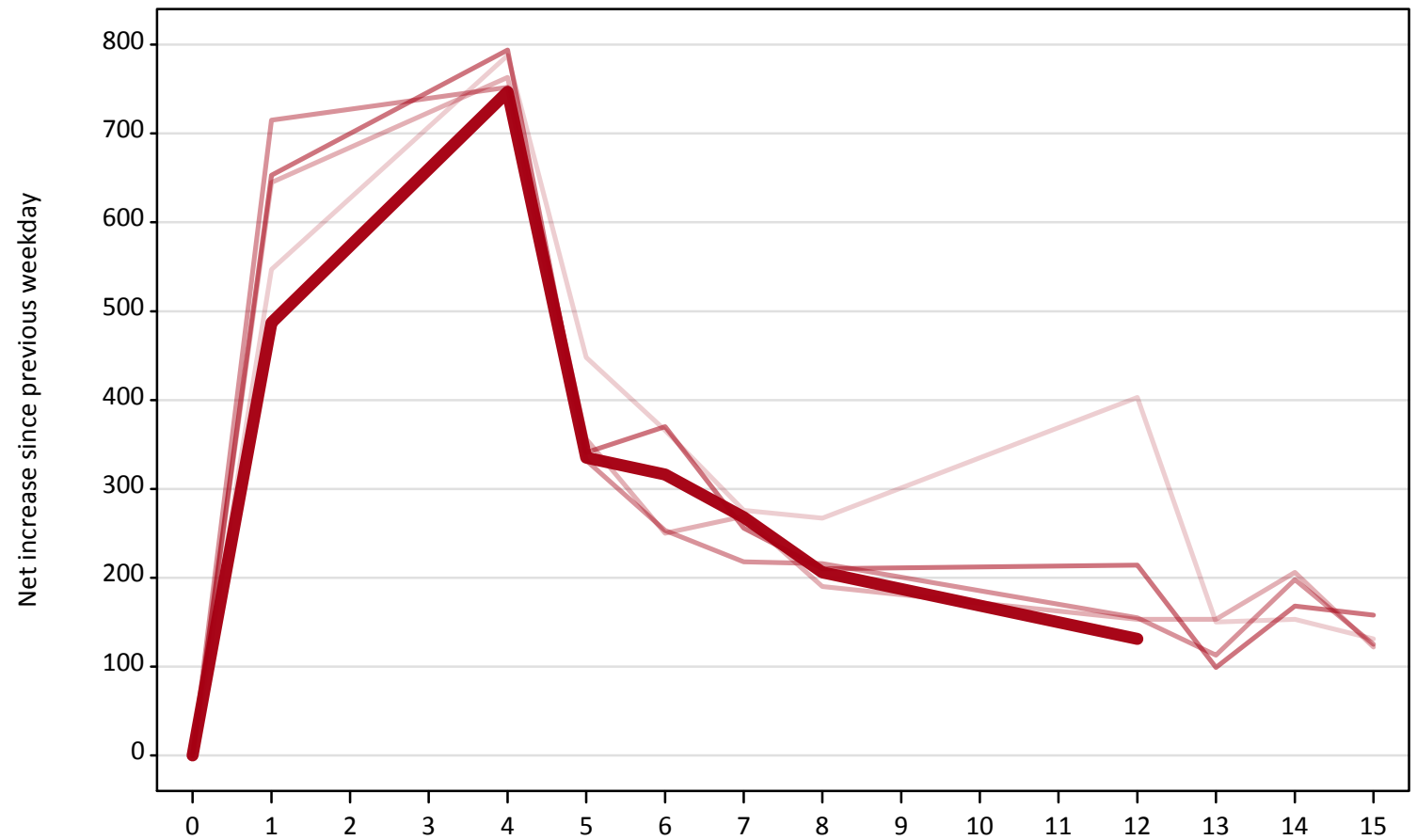
Direct to Clearing: difference between cycle and 2018 cycle

Applicant type	Status	2010	2011	2012	2013	2014	2015	2016	2017	2018	2019
Direct to Clearing	Placed (Direct to Clearing)	-45%	-50%	-33%	-28%	-32%	-18%	-24%	-8%	0%	10%
	Other (Direct to Clearing)	30%	31%	-6%	-4%	-7%	-3%	-16%	-14%	0%	1%

Note: The percentage change is not recorded in the above table for groups with fewer than 10 placed applicants in that cycle or in the 2018 cycle.

A.18 All Placed: Daily net change (from the EU - excluding UK)
Net increase since previous weekday (2019 cycle up to 12 days after A level results day)

- 2015
- 2016
- 2017
- 2018
- 2019**

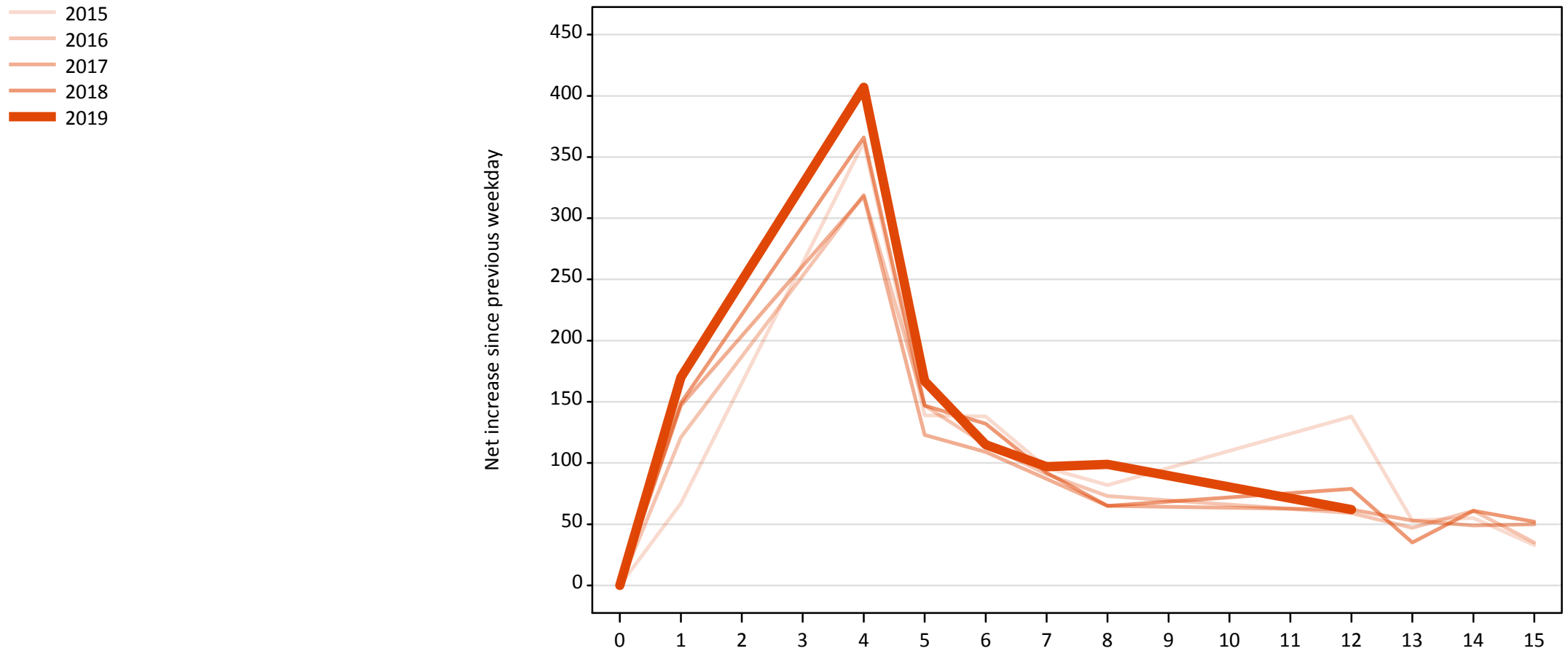


A.19 All Placed: Daily net change (from the EU - excluding UK)

Net increase since previous weekday (2019 cycle up to 12 days after A level results day)

Applicant status, days since A level results day		2015	2016	2017	2018	2019
All Placed	0	0	0	0	0	0
	1	550	650	720	650	490
	4	790	760	750	790	750
	5	450	360	330	340	340
	6	370	250	250	370	320
	7	280	270	220	260	270
	8	270	190	220	210	210
	12	400	150	160	210	130
	13	150	150	110	100	
	14	150	210	200	170	
	15	130	120	130	160	

A.20 Placed through Clearing only: Daily net change (from the EU - excluding UK)
Net increase since previous weekday (2019 cycle up to 12 days after A level results day)

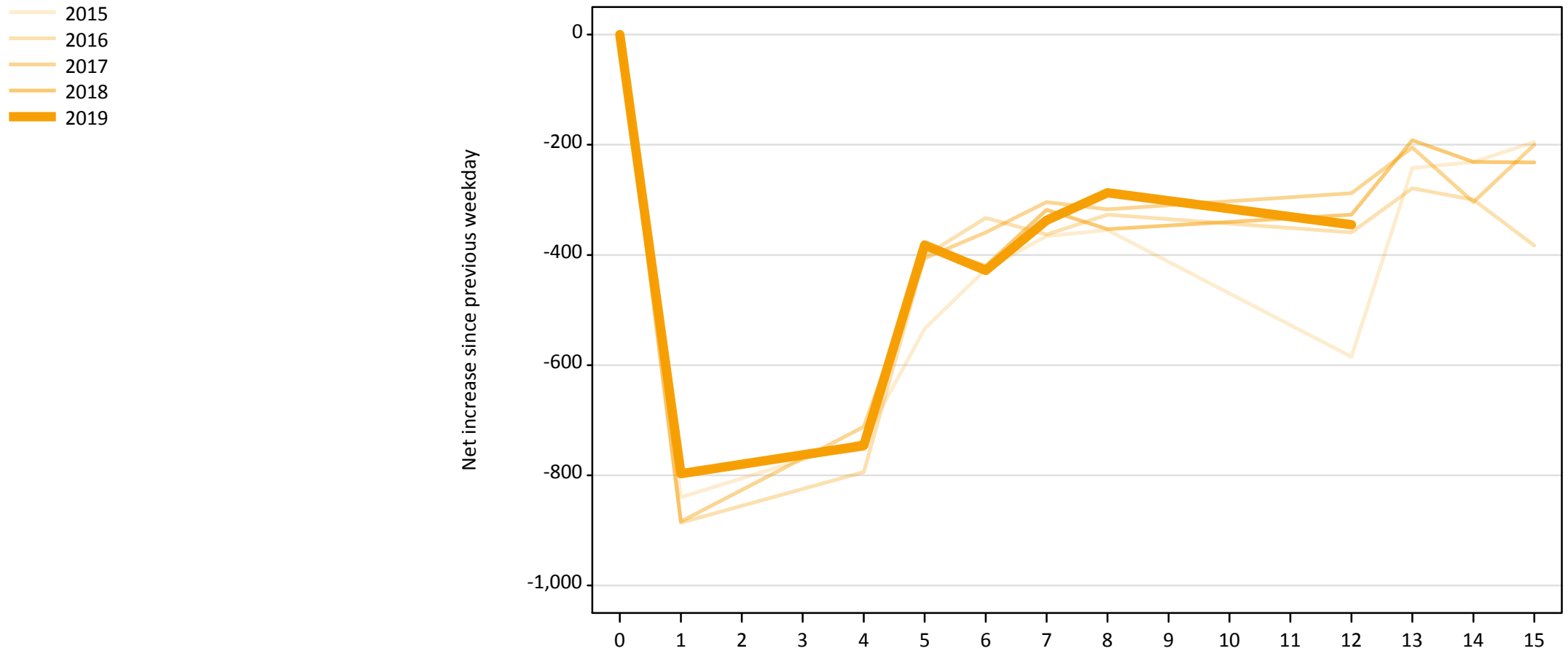


A.21 Placed through Clearing only: Daily net change (from the EU - excluding UK)

Net increase since previous weekday (2019 cycle up to 12 days after A level results day)

Applicant status, days since A level results day		2015	2016	2017	2018	2019
Placed through Clearing only	0	0	0	0	0	0
	1	70	120	150	150	170
	4	360	320	320	370	410
	5	140	150	120	150	170
	6	140	120	110	130	120
	7	100	90	90	90	100
	8	80	70	70	70	100
	12	140	60	60	80	60
	13	50	50	50	40	
	14	60	60	50	60	
	15	30	40	50	50	

A.22 Holding Offer: Daily net change (from the EU - excluding UK)
Net increase since previous weekday (2019 cycle up to 12 days after A level results day)



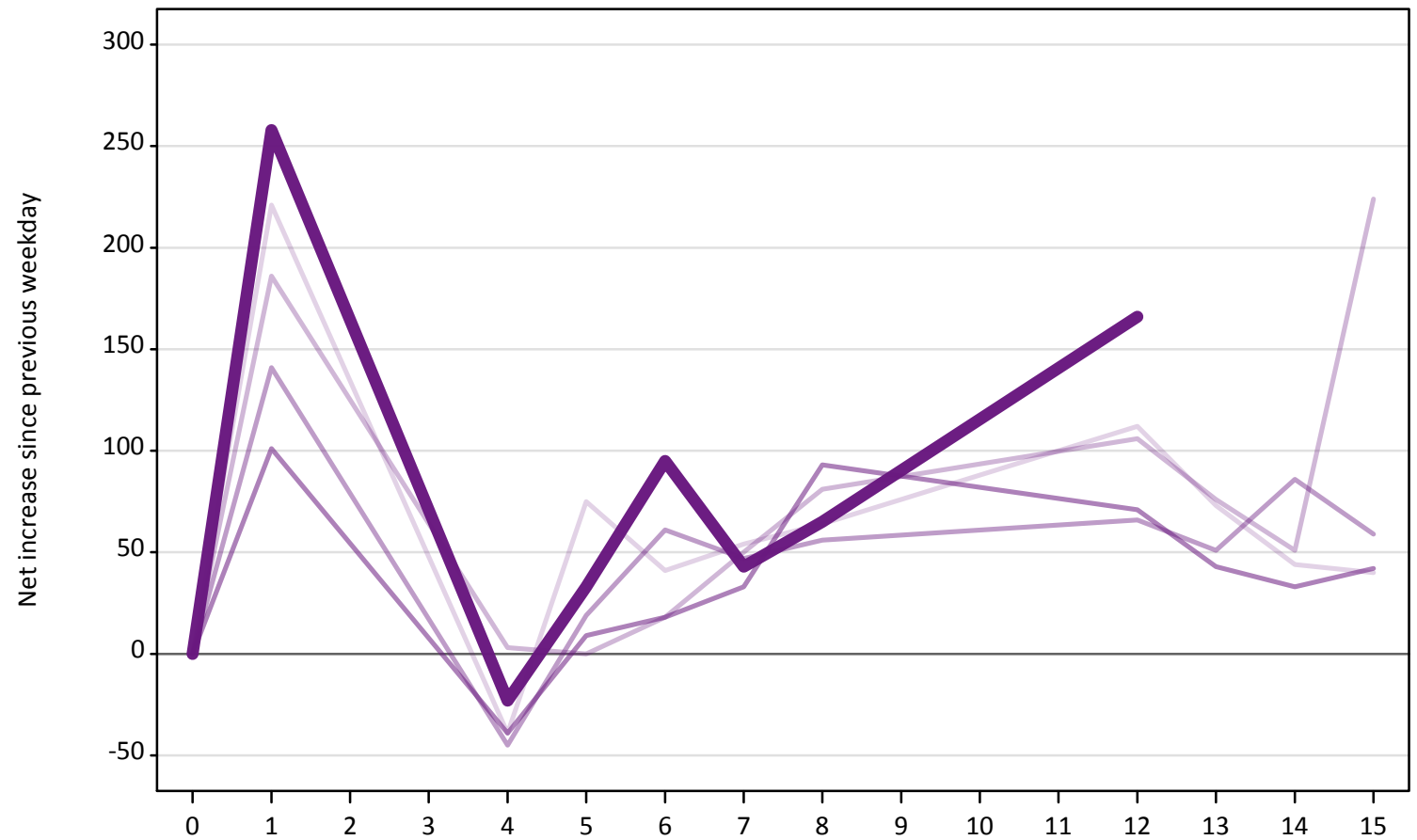
A.23 Holding Offer: Daily net change (from the EU - excluding UK)

Net increase since previous weekday (2019 cycle up to 12 days after A level results day)

Applicant status, days since A level results day	2015	2016	2017	2018	2019	
Holding Offer	0	0	0	0	0	
	1	-840	-890	-880	-800	-800
	4	-740	-790	-710	-750	-750
	5	-530	-400	-410	-380	-380
	6	-430	-330	-360	-420	-430
	7	-370	-360	-300	-320	-340
	8	-360	-330	-320	-350	-290
	12	-590	-360	-290	-330	-350
	13	-240	-280	-210	-190	
	14	-230	-300	-300	-230	
	15	-200	-380	-200	-230	

A.24 Free to be placed in Clearing: Daily net change (from the EU - excluding UK)
Net increase since previous weekday (2019 cycle up to 12 days after A level results day)

- 2015
- 2016
- 2017
- 2018
- 2019



A.25 Free to be placed in Clearing: Daily net change (from the EU - excluding UK)

Net increase since previous weekday (2019 cycle up to 12 days after A level results day)

Applicant status, days since A level results day		2015	2016	2017	2018	2019
Free to be placed in Clearing	0	0	0	0	0	0
	1	220	190	140	100	260
	4	-40	0	-50	-40	-20
	5	80	0	20	10	30
	6	40	20	60	20	100
	7	50	50	50	30	40
	8	60	80	60	90	70
	12	110	110	70	70	170
	13	70	80	50	40	
	14	40	50	90	30	
	15	40	220	60	40	