

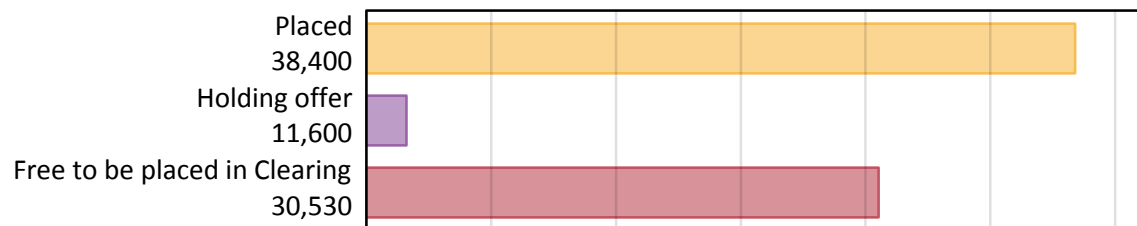
Daily Clearing Analysis: Overview

Analysis at 00:05 on Tuesday 27 August 2019 (12 days after A level results day)

A.1 Applicants by type and status from outside the EU, 2019 cycle

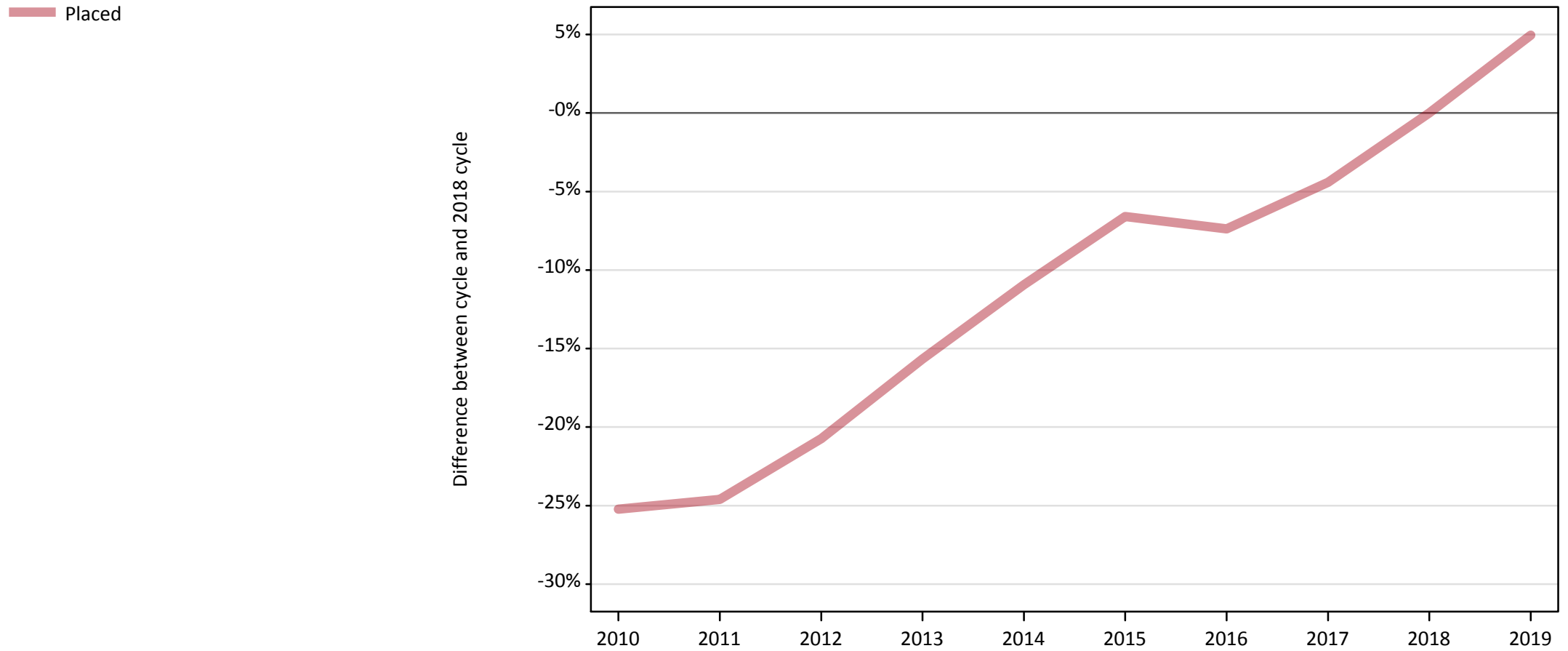
Applicant type	Status	2019
Main scheme	Placed (Clearing)	3,270
	Placed (Adjustment)	50
	Placed (Firm)	28,880
	Placed (Insurance)	3,570
	Placed (Other)	2,030
	Holding offer	11,600
	Free to be placed in Clearing	30,530
Direct to Clearing	Placed (Direct to Clearing)	600
	Other (Direct to Clearing)	900
All applicants	Placed	38,400

A.2 Summary of applicants who are placed, holding offers or free to be placed in Clearing (outside the EU)



A.3 All placed applicants from outside the EU: 12 days after A level results day

All placed applicants: difference between cycle and 2018 cycle



Note: The percentage change is not plotted in the above chart for groups with fewer than 30 placed applicants in any one cycle.

A.4 All placed applicants from outside the EU: 12 days after A level results day

All placed applicants: applicants at 12 days after A level results day

Applicant type	Status	2010	2011	2012	2013	2014	2015	2016	2017	2018	2019
All applicants	Placed	27,360	27,590	29,000	30,860	32,590	34,180	33,890	34,970	36,590	38,400

A.5 All placed applicants from outside the EU: 12 days after A level results day

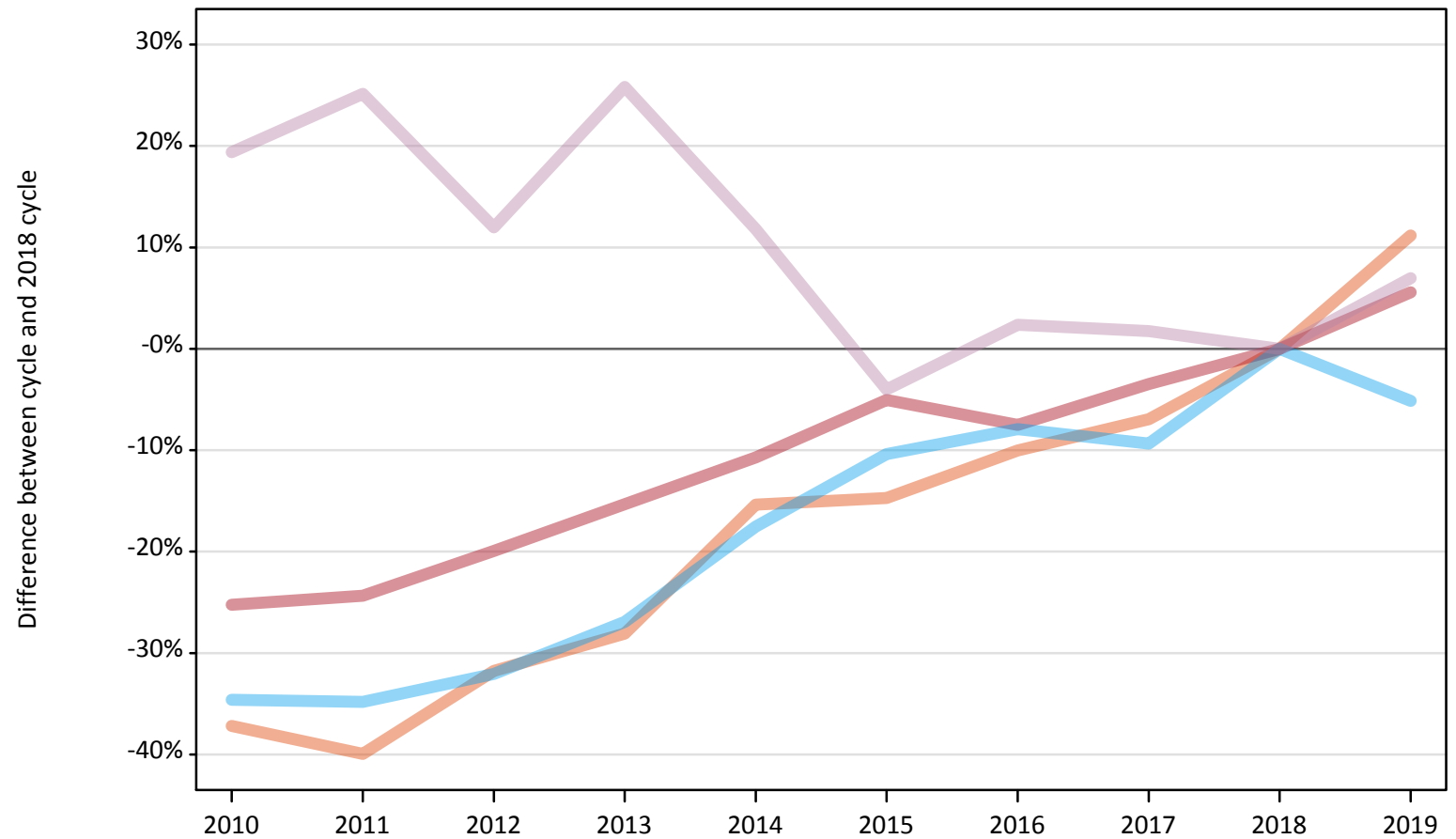
All placed applicants: difference between cycle and 2018 cycle

Applicant type	Status	2010	2011	2012	2013	2014	2015	2016	2017	2018	2019
All applicants	Placed	-25%	-25%	-21%	-16%	-11%	-7%	-7%	-4%	0%	5%

Note: The percentage change is not recorded in the above table for groups with fewer than 10 placed applicants in that cycle or in the 2018 cycle.

A.6 Placed main scheme applicants from outside the EU: 12 days after A level results day
All Main scheme placed routes (excluding Adjustment): difference between cycle and 2018 cycle

- Placed (Clearing)
- Placed (Firm)
- Placed (Insurance)
- Placed (Other)



Note: The percentage change is not plotted in the above chart for groups with fewer than 30 placed applicants in any one cycle.

A.7 Placed main scheme applicants from outside the EU: 12 days after A level results day

All Main scheme placed routes (excluding Adjustment): applicants at 12 days after A level results day

Applicant type	Status	2010	2011	2012	2013	2014	2015	2016	2017	2018	2019
Main scheme	Placed (Clearing)	1,850	1,770	2,010	2,110	2,490	2,510	2,650	2,740	2,940	3,270
	Placed (Firm)	20,460	20,700	21,910	23,170	24,440	25,980	25,310	26,410	27,360	28,880
	Placed (Insurance)	2,460	2,450	2,560	2,750	3,100	3,370	3,470	3,410	3,760	3,570
	Placed (Other)	2,270	2,370	2,120	2,390	2,120	1,820	1,940	1,930	1,900	2,030

A.8 Placed main scheme applicants from outside the EU: 12 days after A level results day

All Main scheme placed routes (excluding Adjustment): difference between cycle and 2018 cycle

Applicant type	Status	2010	2011	2012	2013	2014	2015	2016	2017	2018	2019
Main scheme	Placed (Clearing)	-37%	-40%	-32%	-28%	-15%	-15%	-10%	-7%	0%	11%
	Placed (Firm)	-25%	-24%	-20%	-15%	-11%	-5%	-7%	-3%	0%	6%
	Placed (Insurance)	-35%	-35%	-32%	-27%	-18%	-10%	-8%	-9%	0%	-5%
	Placed (Other)	19%	25%	12%	26%	12%	-4%	2%	2%	0%	7%

Note: The percentage change is not recorded in the above table for groups with fewer than 10 placed applicants in that cycle or in the 2018 cycle.

A.9 Main scheme applicants placed through adjustment: 12 days after A level results day

Placed through adjustment: difference between cycle and 2018 cycle

Placed (Adjustment)



Note: The percentage change is not plotted in the above chart for groups with fewer than 30 placed applicants in any one cycle.

A.10 Main scheme applicants placed through adjustment: 12 days after A level results day

Placed through adjustment: applicants at 12 days after A level results day

Applicant type	Status	2010	2011	2012	2013	2014	2015	2016	2017	2018	2019
Main scheme	Placed (Adjustment)	50	40	70	60	90	70	70	50	50	50

A.11 Main scheme applicants placed through adjustment: 12 days after A level results day

Placed through adjustment: difference between cycle and 2018 cycle

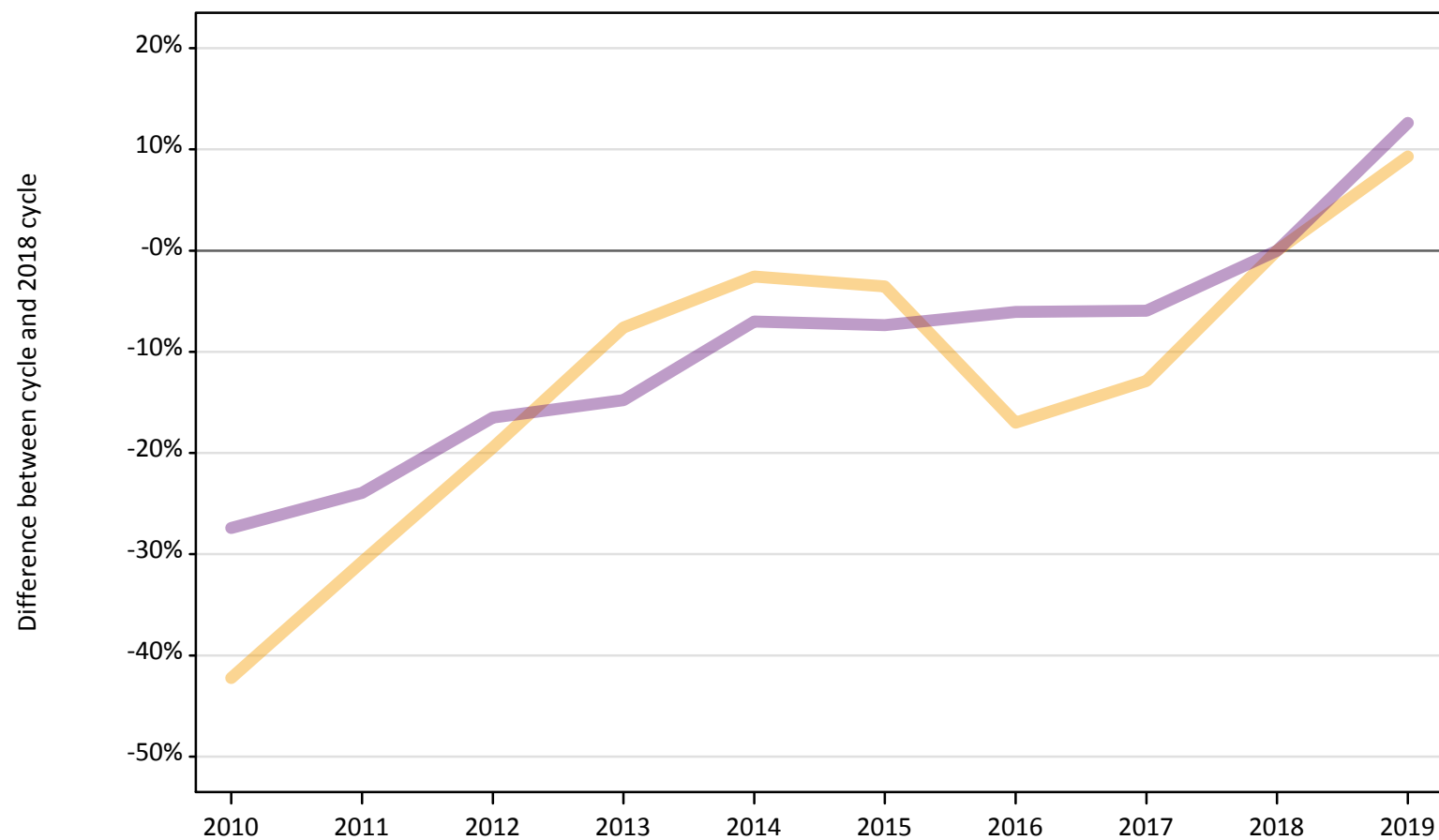
Applicant type	Status	2010	2011	2012	2013	2014	2015	2016	2017	2018	2019
Main scheme	Placed (Adjustment)	0%	-11%	49%	29%	96%	58%	49%	9%	0%	9%

Note: The percentage change is not recorded in the above table for groups with fewer than 10 placed applicants in that cycle or in the 2018 cycle.

A.12 Main scheme applicants not currently placed from outside the EU: 12 days after A level results day

Applicants in unplaced states: difference between cycle and 2018 cycle

— Holding offer
— Free to be placed in Clearing



Note: The percentage change is not plotted in the above chart for groups with fewer than 30 unplaced applicants in any one cycle.

A.13 Main scheme applicants not currently placed from outside the EU: 12 days after A level results day

Applicants in unplaced states: applicants at 12 days after A level results day

Applicant type	Status	2010	2011	2012	2013	2014	2015	2016	2017	2018	2019
Main scheme	Holding offer	6,130	7,350	8,550	9,810	10,340	10,240	8,810	9,250	10,610	11,600
	Free to be placed in Clearing	19,670	20,620	22,630	23,100	25,200	25,110	25,460	25,490	27,100	30,530

A.14 Main scheme applicants not currently placed from outside the EU: 12 days after A level results day

Applicants in unplaced states: difference between cycle and 2018 cycle

Applicant type	Status	2010	2011	2012	2013	2014	2015	2016	2017	2018	2019
Main scheme	Holding offer	-42%	-31%	-19%	-8%	-3%	-4%	-17%	-13%	0%	9%
	Free to be placed in Clearing	-27%	-24%	-17%	-15%	-7%	-7%	-6%	-6%	0%	13%

Note: The percentage change is not recorded in the above table for groups with fewer than 10 unplaced applicants in that cycle or in the 2018 cycle.

A.15 Direct to Clearing applicants from outside the EU: 12 days after A level results day

Direct to Clearing: difference between cycle and 2018 cycle



Note: The percentage change is not plotted in the above chart for groups with fewer than 30 placed applicants in any one cycle.

A.16 Direct to Clearing applicants from outside the EU: 12 days after A level results day

Direct to Clearing 12 days after A level results day

Applicant type	Status	2010	2011	2012	2013	2014	2015	2016	2017	2018	2019
Direct to Clearing	Placed (Direct to Clearing)	280	260	340	380	350	430	460	440	580	600
	Other (Direct to Clearing)	850	790	770	860	720	800	690	760	750	900

A.17 Direct to Clearing applicants from outside the EU: 12 days after A level results day

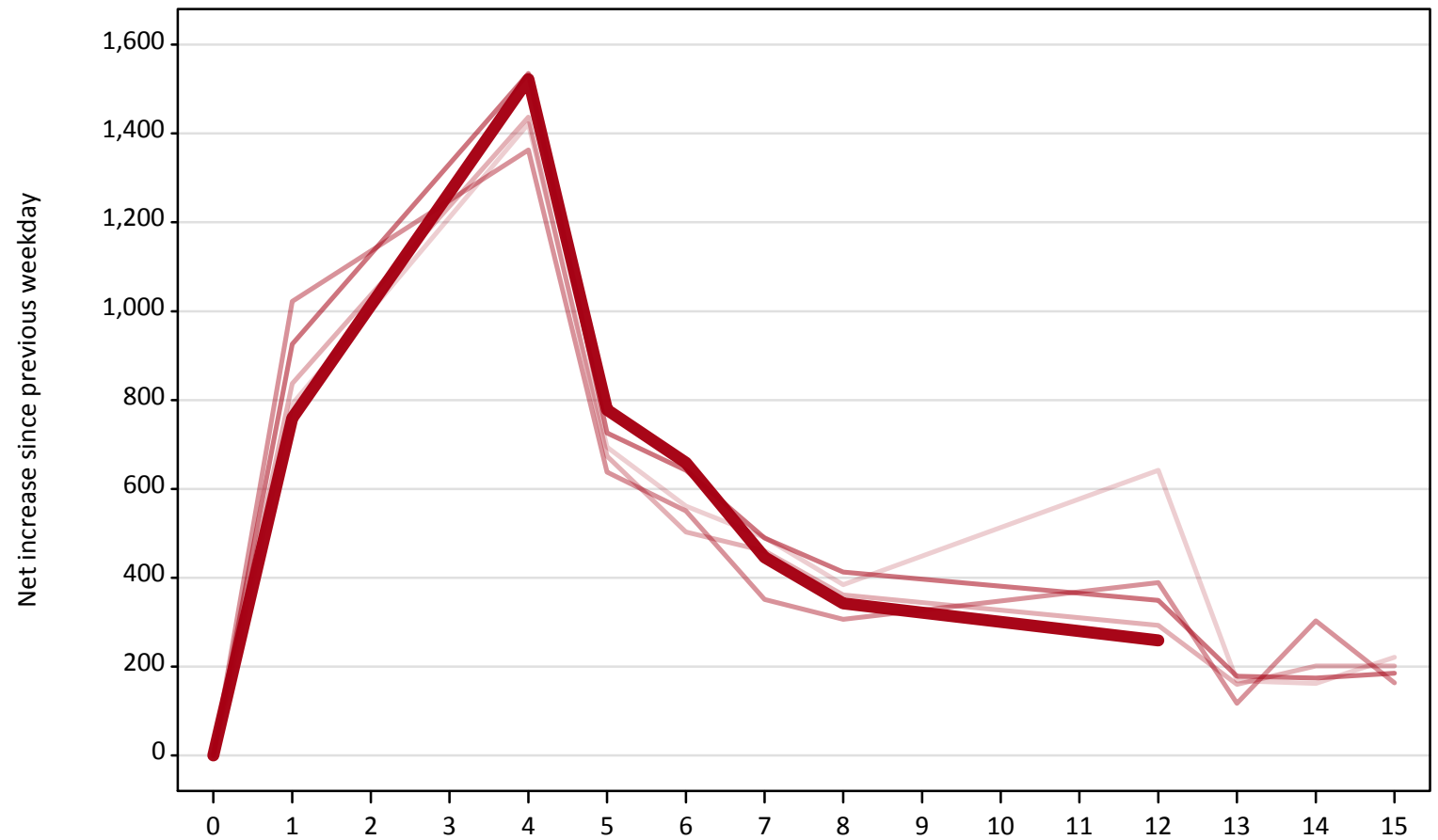
Direct to Clearing: difference between cycle and 2018 cycle

Applicant type	Status	2010	2011	2012	2013	2014	2015	2016	2017	2018	2019
Direct to Clearing	Placed (Direct to Clearing)	-51%	-56%	-42%	-35%	-39%	-27%	-21%	-25%	0%	3%
	Other (Direct to Clearing)	13%	5%	2%	15%	-5%	7%	-9%	1%	0%	19%

Note: The percentage change is not recorded in the above table for groups with fewer than 10 placed applicants in that cycle or in the 2018 cycle.

A.18 All Placed: Daily net change (from outside the EU)
Net increase since previous weekday (2019 cycle up to 12 days after A level results day)

- 2015
- 2016
- 2017
- 2018
- 2019**

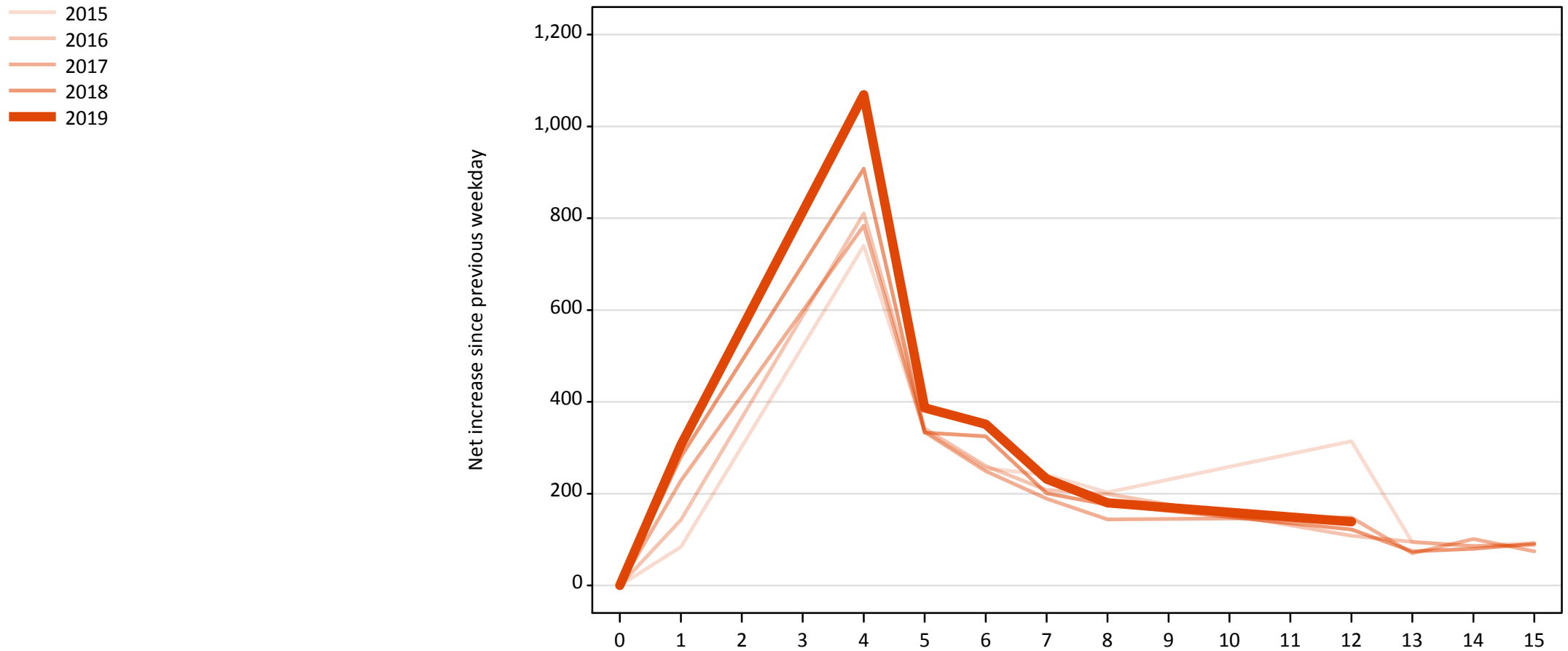


A.19 All Placed: Daily net change (from outside the EU)

Net increase since previous weekday (2019 cycle up to 12 days after A level results day)

Applicant status, days since A level results day		2015	2016	2017	2018	2019
All Placed	0	0	0	0	0	0
	1	790	840	1,020	930	760
	4	1,420	1,440	1,360	1,540	1,520
	5	690	670	640	730	780
	6	560	500	550	640	660
	7	490	460	350	490	450
	8	380	360	310	410	340
	12	640	290	390	350	260
	13	170	160	120	180	
	14	160	200	300	170	
	15	220	200	160	190	

A.20 Placed through Clearing only: Daily net change (from outside the EU)
Net increase since previous weekday (2019 cycle up to 12 days after A level results day)



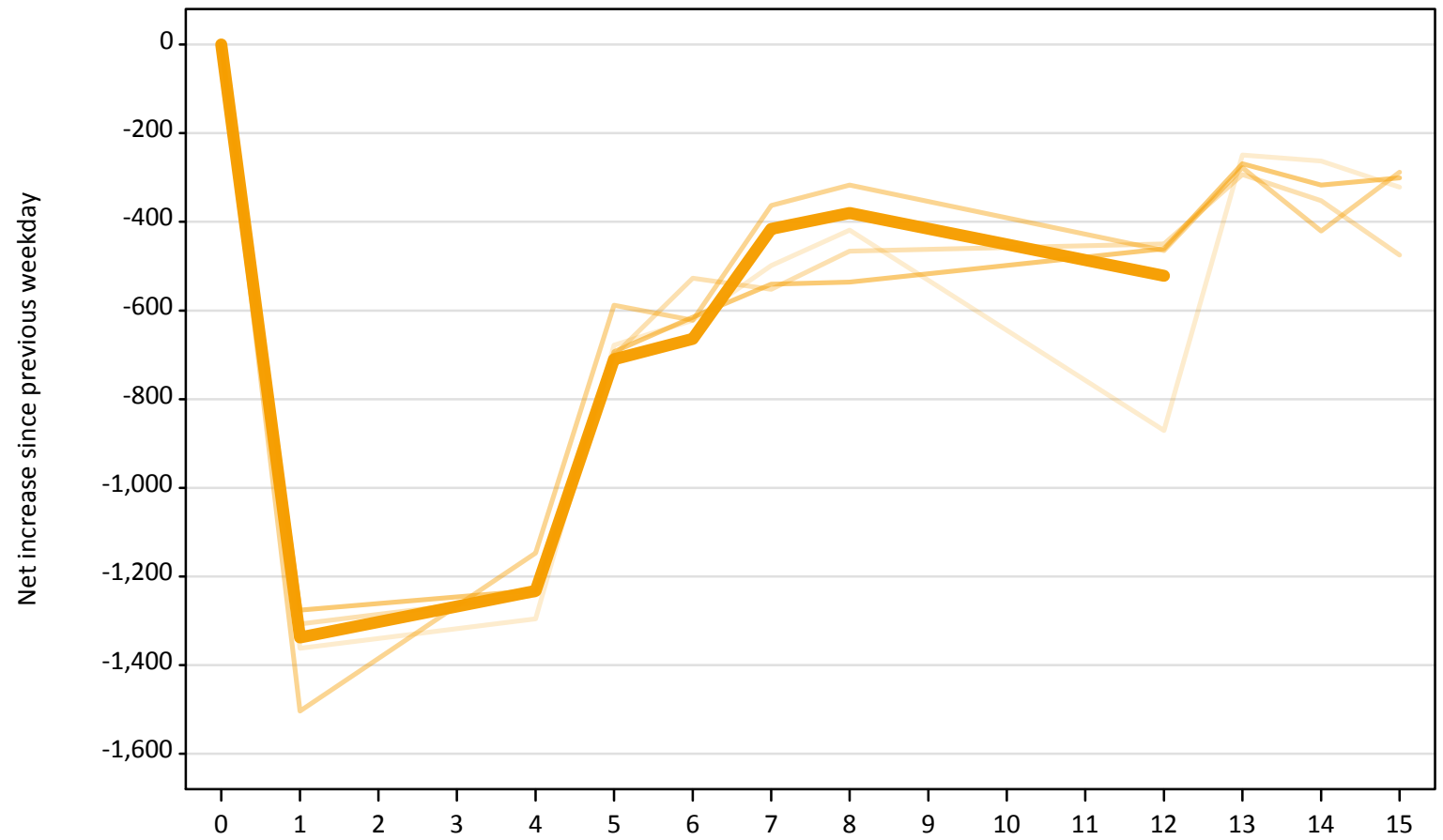
A.21 Placed through Clearing only: Daily net change (from outside the EU)

Net increase since previous weekday (2019 cycle up to 12 days after A level results day)

Applicant status, days since A level results day		2015	2016	2017	2018	2019
Placed through Clearing only	0	0	0	0	0	0
	1	80	140	230	280	310
	4	740	810	780	910	1,070
	5	340	340	330	330	390
	6	260	260	250	330	350
	7	240	210	190	200	230
	8	200	200	140	180	180
	12	310	110	150	120	140
	13	90	100	70	70	
	14	90	90	100	80	
	15	90	90	70	90	

A.22 Holding Offer: Daily net change (from outside the EU)
Net increase since previous weekday (2019 cycle up to 12 days after A level results day)

- 2015
- 2016
- 2017
- 2018
- 2019**



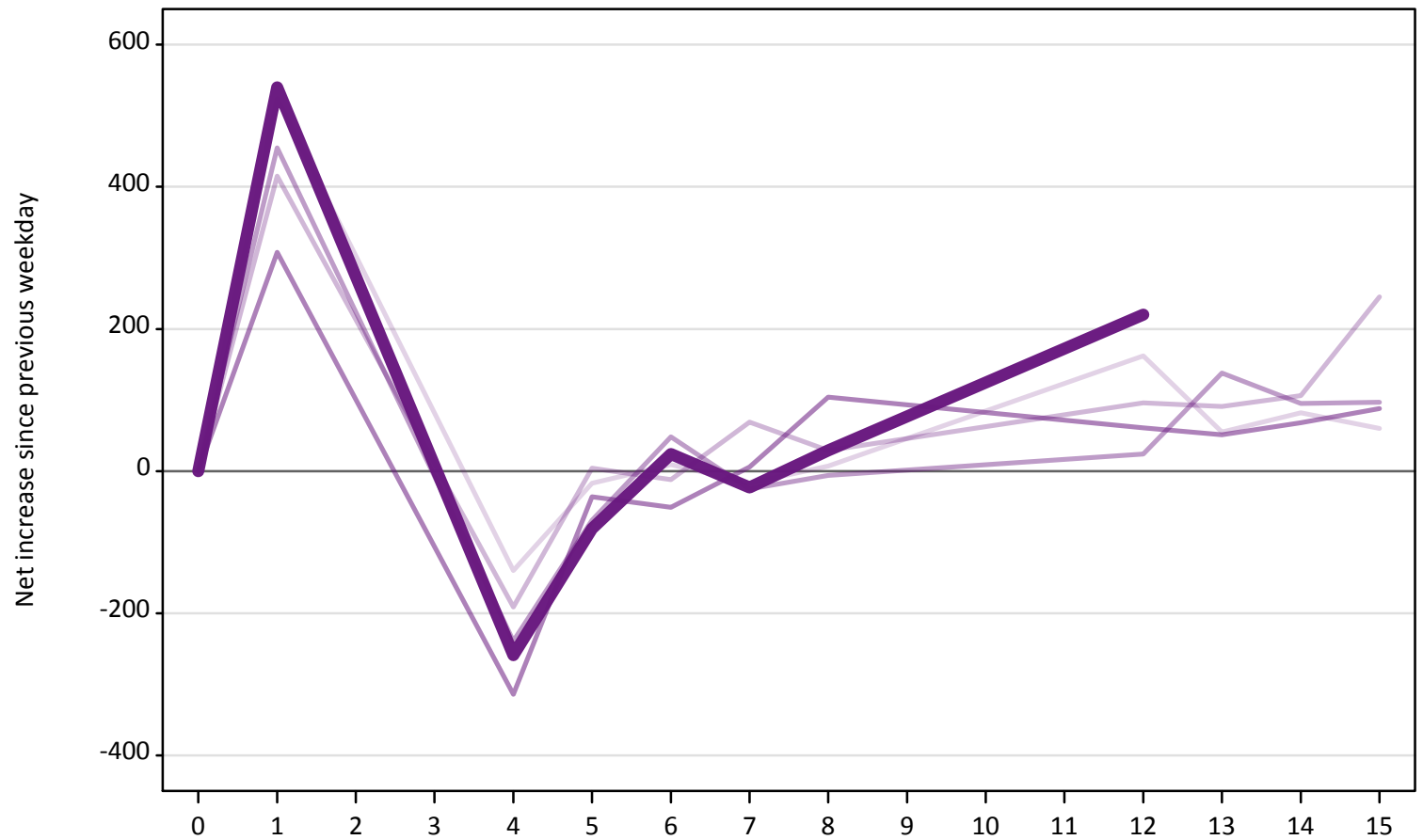
A.23 Holding Offer: Daily net change (from outside the EU)

Net increase since previous weekday (2019 cycle up to 12 days after A level results day)

Applicant status, days since A level results day		2015	2016	2017	2018	2019
Holding Offer	0	0	0	0	0	0
	1	-1,360	-1,310	-1,500	-1,280	-1,340
	4	-1,300	-1,240	-1,150	-1,230	-1,230
	5	-680	-700	-590	-690	-710
	6	-620	-530	-620	-620	-660
	7	-500	-550	-360	-540	-420
	8	-420	-470	-320	-540	-380
	12	-870	-450	-470	-460	-520
	13	-250	-290	-280	-270	
	14	-260	-350	-420	-320	
	15	-320	-480	-290	-300	

A.24 Free to be placed in Clearing: Daily net change (from outside the EU)
Net increase since previous weekday (2019 cycle up to 12 days after A level results day)

- 2015
- 2016
- 2017
- 2018
- 2019



A.25 Free to be placed in Clearing: Daily net change (from outside the EU)

Net increase since previous weekday (2019 cycle up to 12 days after A level results day)

Applicant status, days since A level results day	2015	2016	2017	2018	2019	
Free to be placed in Clearing	0	0	0	0	0	
	1	520	420	460	310	540
	4	-140	-190	-240	-310	-260
	5	-20	0	-70	-40	-80
	6	10	-10	50	-50	20
	7	-20	70	-30	10	-20
	8	10	30	-10	100	30
	12	160	100	20	60	220
	13	60	90	140	50	
	14	80	110	100	70	
	15	60	250	100	90	