

## Analysis at 00:05 on Tuesday 27 August 2019 (12 days after A level results day)

### C.1 Placed applicants by country of domicile and age group, 2019 cycle (12 days after A level results day)

Domicile of applicant	Age group				
	17 and under	18	19	20 to 24	25 and over
England	570	204,850	64,580	45,610	28,560
Northern Ireland	30	7,880	2,340	2,280	810
Scotland	510	14,040	4,370	7,790	6,590
Wales	20	9,860	3,290	2,720	2,040
UK	1,130	236,630	74,570	58,400	37,990

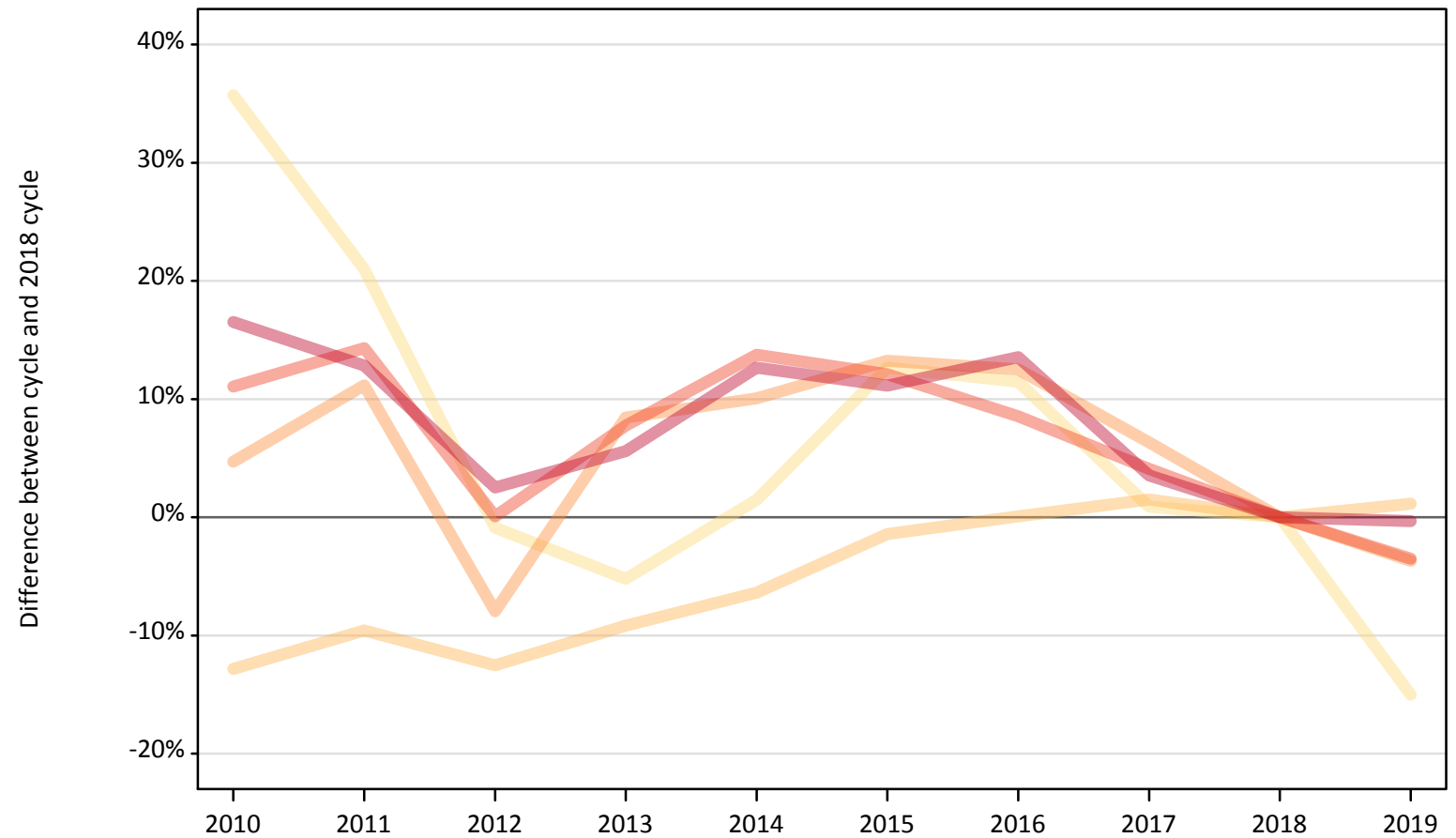
### C.2 Proportion of 18 year old population placed by country of domicile, 2019 cycle (12 days after A level results day)

Domicile of applicant	Age group	2019
England	18	34.3%
Northern Ireland	18	35.2%
Scotland	18	26.1%
Wales	18	29.3%

### C.3 Placed applicants from England by age group at 12 days after A level results day

Selected age groups: difference between cycle and 2018 cycle

- 17 and under
- 18
- 19
- 20 to 24
- 25 and over



Note: The percentage change is not plotted in the above chart for groups with fewer than 30 placed applicants in any one cycle.

#### C.4 Placed applicants from England by age group at 12 days after A level results day

All age groups

Domicile of applicant	Age group	2010	2011	2012	2013	2014	2015	2016	2017	2018	2019
England	17 and under	910	810	670	640	680	760	750	680	670	570
	18	176,510	183,150	177,150	183,950	189,630	199,640	202,700	205,550	202,530	204,850
	19	70,200	74,540	61,720	72,710	73,800	75,930	75,440	71,290	67,050	64,580
	20 to 24	52,490	54,030	47,310	50,930	53,760	52,990	51,300	49,200	47,260	45,610
	25 and over	33,380	32,330	29,370	30,260	32,280	31,840	32,530	29,670	28,650	28,560

#### C.5 Placed applicants from England by age group at 12 days after A level results day

Selected age groups: difference between cycle and 2018 cycle

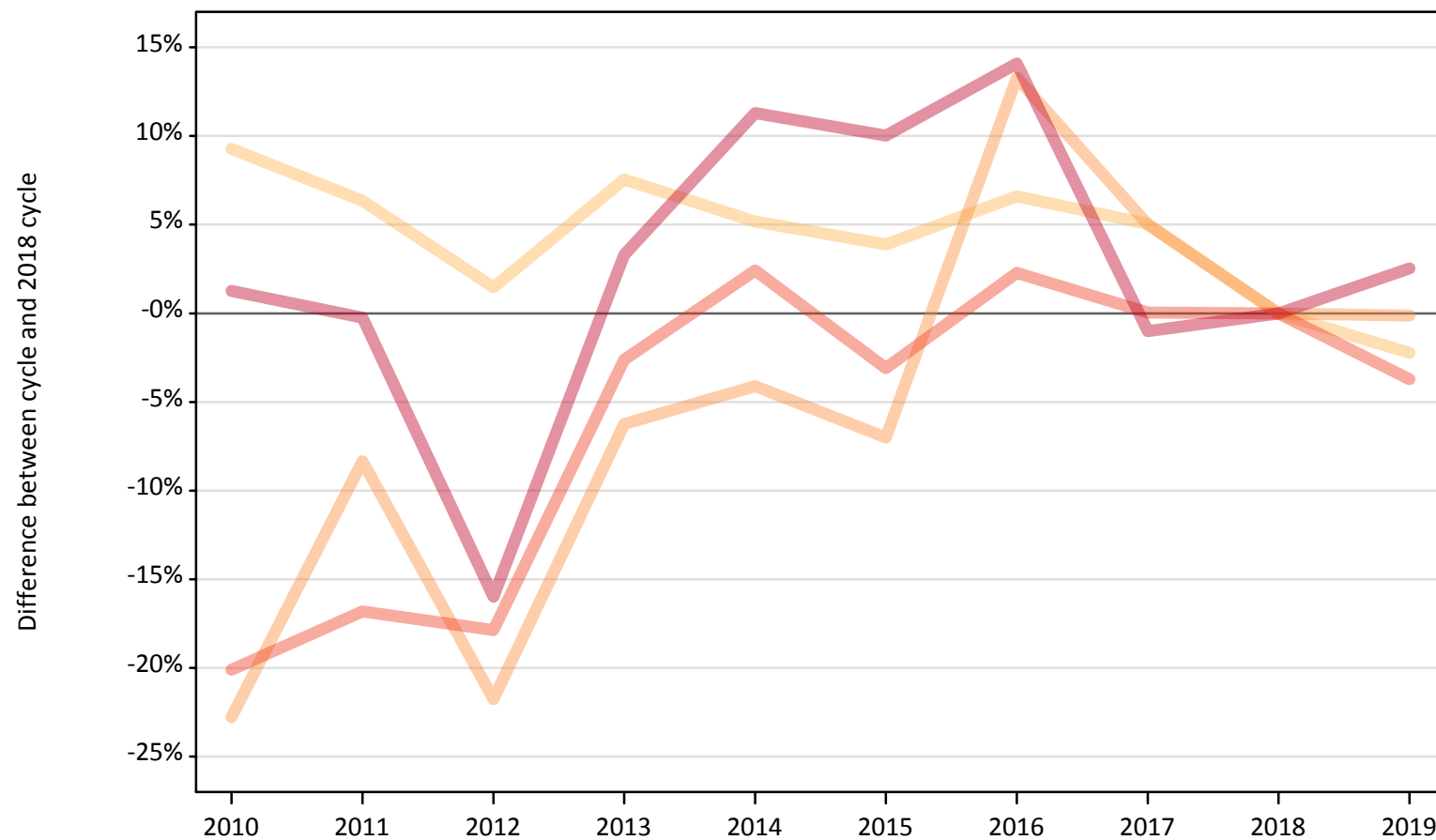
Domicile of applicant	Age group	2010	2011	2012	2013	2014	2015	2016	2017	2018	2019
England	17 and under	36%	21%	-1%	-5%	1%	13%	11%	1%	0%	-15%
	18	-13%	-10%	-13%	-9%	-6%	-1%	0%	1%	0%	1%
	19	5%	11%	-8%	8%	10%	13%	13%	6%	0%	-4%
	20 to 24	11%	14%	0%	8%	14%	12%	9%	4%	0%	-3%
	25 and over	17%	13%	3%	6%	13%	11%	14%	4%	0%	-0%

Note: The percentage change is not recorded in the above table for groups with fewer than 10 placed applicants in that cycle or in the 2018 cycle.

## C.6 Placed applicants from Northern Ireland by age group at 12 days after A level results day

Selected age groups: difference between cycle and 2018 cycle

- 17 and under
- 18
- 19
- 20 to 24
- 25 and over



Note: The percentage change is not plotted in the above chart for groups with fewer than 30 placed applicants in any one cycle.

### C.7 Placed applicants from Northern Ireland by age group at 12 days after A level results day

All age groups

Domicile of applicant	Age group	2010	2011	2012	2013	2014	2015	2016	2017	2018	2019
Northern Ireland	17 and under	40	40	40	20	20	20	30	20	30	30
	18	8,810	8,570	8,180	8,670	8,480	8,380	8,600	8,470	8,060	7,880
	19	1,810	2,140	1,830	2,190	2,240	2,180	2,650	2,460	2,340	2,340
	20 to 24	1,890	1,970	1,940	2,310	2,420	2,290	2,420	2,370	2,370	2,280
	25 and over	800	790	660	810	880	870	900	780	790	810

### C.8 Placed applicants from Northern Ireland by age group at 12 days after A level results day

Selected age groups: difference between cycle and 2018 cycle

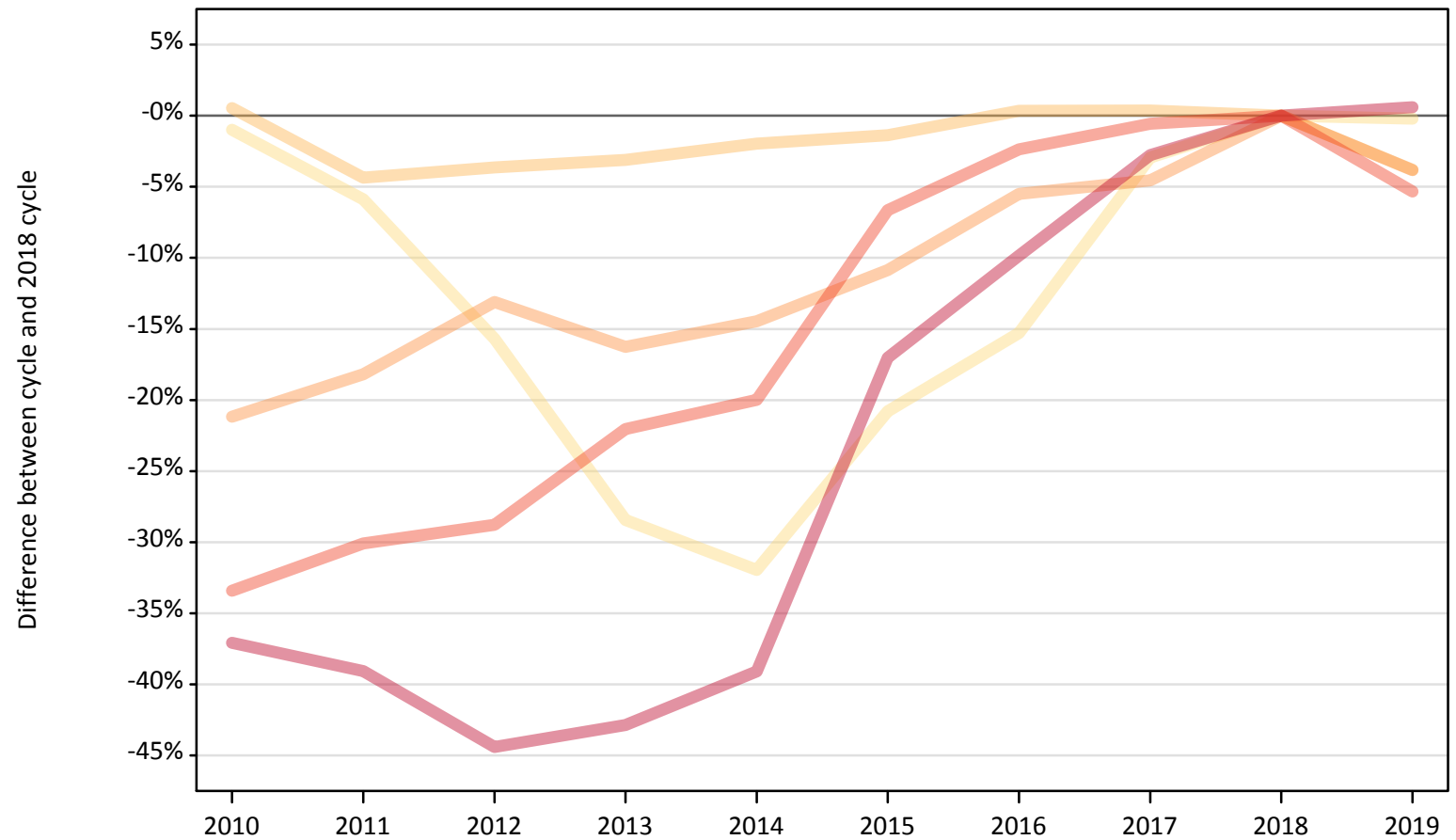
Domicile of applicant	Age group	2010	2011	2012	2013	2014	2015	2016	2017	2018	2019
Northern Ireland	17 and under	52%	48%	68%	-16%	-20%	-28%	24%	-28%	0%	12%
	18	9%	6%	1%	8%	5%	4%	7%	5%	0%	-2%
	19	-23%	-8%	-22%	-6%	-4%	-7%	13%	5%	0%	-0%
	20 to 24	-20%	-17%	-18%	-3%	2%	-3%	2%	0%	0%	-4%
	25 and over	1%	-0%	-16%	3%	11%	10%	14%	-1%	0%	3%

Note: The percentage change is not recorded in the above table for groups with fewer than 10 placed applicants in that cycle or in the 2018 cycle.

### C.9 Placed applicants from Scotland by age group at 12 days after A level results day

Selected age groups: difference between cycle and 2018 cycle

- 17 and under
- 18
- 19
- 20 to 24
- 25 and over



Note: The percentage change is not plotted in the above chart for groups with fewer than 30 placed applicants in any one cycle.

### C.10 Placed applicants from Scotland by age group at 12 days after A level results day

All age groups

Domicile of applicant	Age group	2010	2011	2012	2013	2014	2015	2016	2017	2018	2019
Scotland	17 and under	510	480	430	370	350	400	430	500	510	510
	18	14,670	13,960	14,060	14,140	14,310	14,400	14,640	14,650	14,590	14,040
	19	3,580	3,710	3,950	3,800	3,880	4,050	4,290	4,330	4,540	4,370
	20 to 24	5,480	5,750	5,860	6,410	6,580	7,680	8,030	8,180	8,230	7,790
	25 and over	4,120	3,990	3,640	3,740	3,990	5,430	5,900	6,370	6,550	6,590

### C.11 Placed applicants from Scotland by age group at 12 days after A level results day

Selected age groups: difference between cycle and 2018 cycle

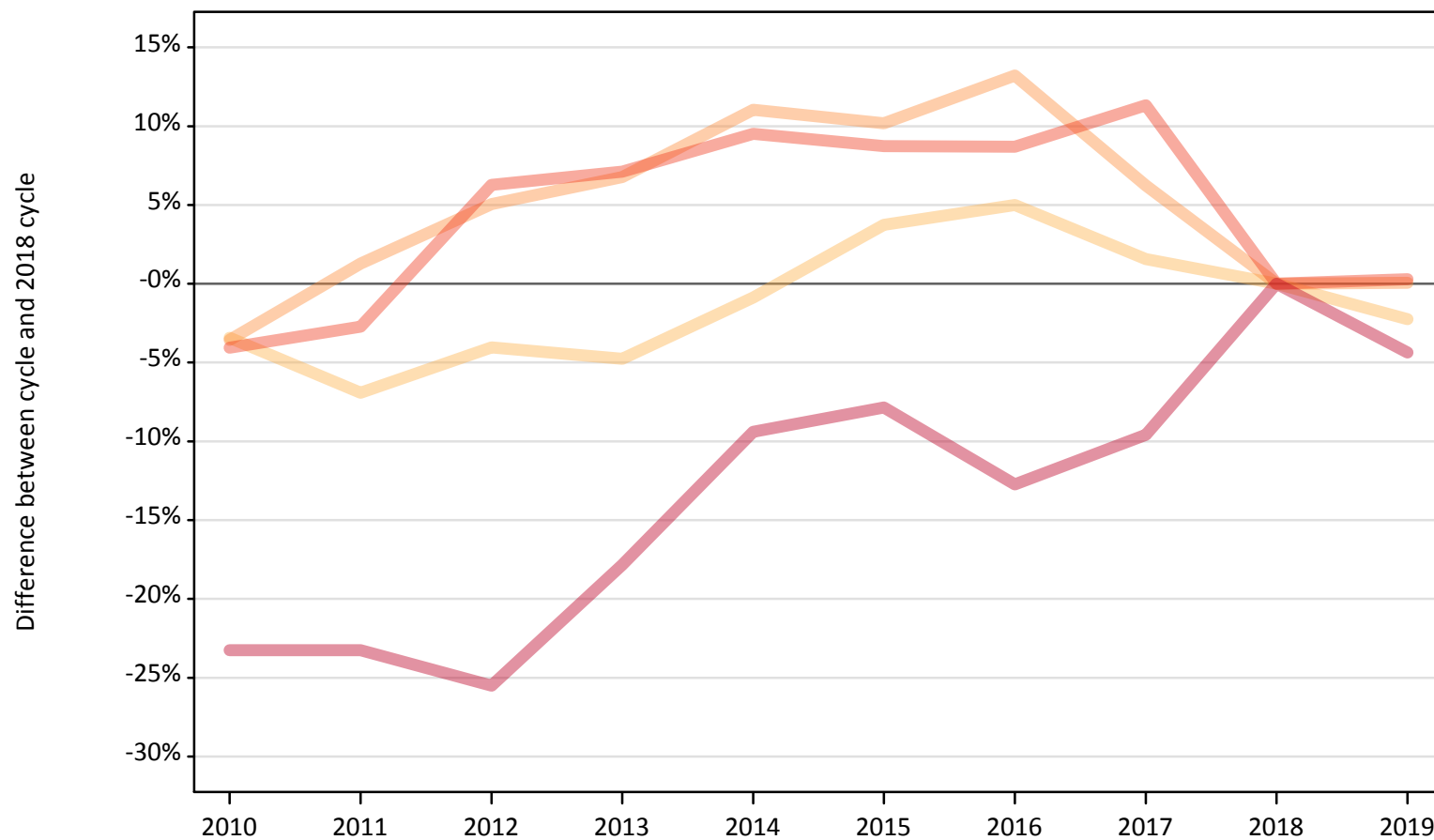
Domicile of applicant	Age group	2010	2011	2012	2013	2014	2015	2016	2017	2018	2019
Scotland	17 and under	-1%	-6%	-16%	-28%	-32%	-21%	-15%	-3%	0%	-0%
	18	1%	-4%	-4%	-3%	-2%	-1%	0%	0%	0%	-4%
	19	-21%	-18%	-13%	-16%	-14%	-11%	-6%	-5%	0%	-4%
	20 to 24	-33%	-30%	-29%	-22%	-20%	-7%	-2%	-1%	0%	-5%
	25 and over	-37%	-39%	-44%	-43%	-39%	-17%	-10%	-3%	0%	1%

Note: The percentage change is not recorded in the above table for groups with fewer than 10 placed applicants in that cycle or in the 2018 cycle.

### C.12 Placed applicants from Wales by age group at 12 days after A level results day

Selected age groups: difference between cycle and 2018 cycle

- 17 and under
- 18
- 19
- 20 to 24
- 25 and over



Note: The percentage change is not plotted in the above chart for groups with fewer than 30 placed applicants in any one cycle.



### C.13 Placed applicants from Wales by age group at 12 days after A level results day

All age groups

Domicile of applicant	Age group	2010	2011	2012	2013	2014	2015	2016	2017	2018	2019
Wales	17 and under	40	30	20	30	20	20	20	20	30	20
	18	9,740	9,380	9,670	9,600	9,990	10,460	10,580	10,240	10,080	9,860
	19	3,170	3,330	3,460	3,510	3,650	3,630	3,730	3,500	3,290	3,290
	20 to 24	2,600	2,640	2,880	2,910	2,970	2,950	2,950	3,020	2,710	2,720
	25 and over	1,630	1,630	1,590	1,750	1,930	1,960	1,860	1,930	2,130	2,040

### C.14 Placed applicants from Wales by age group at 12 days after A level results day

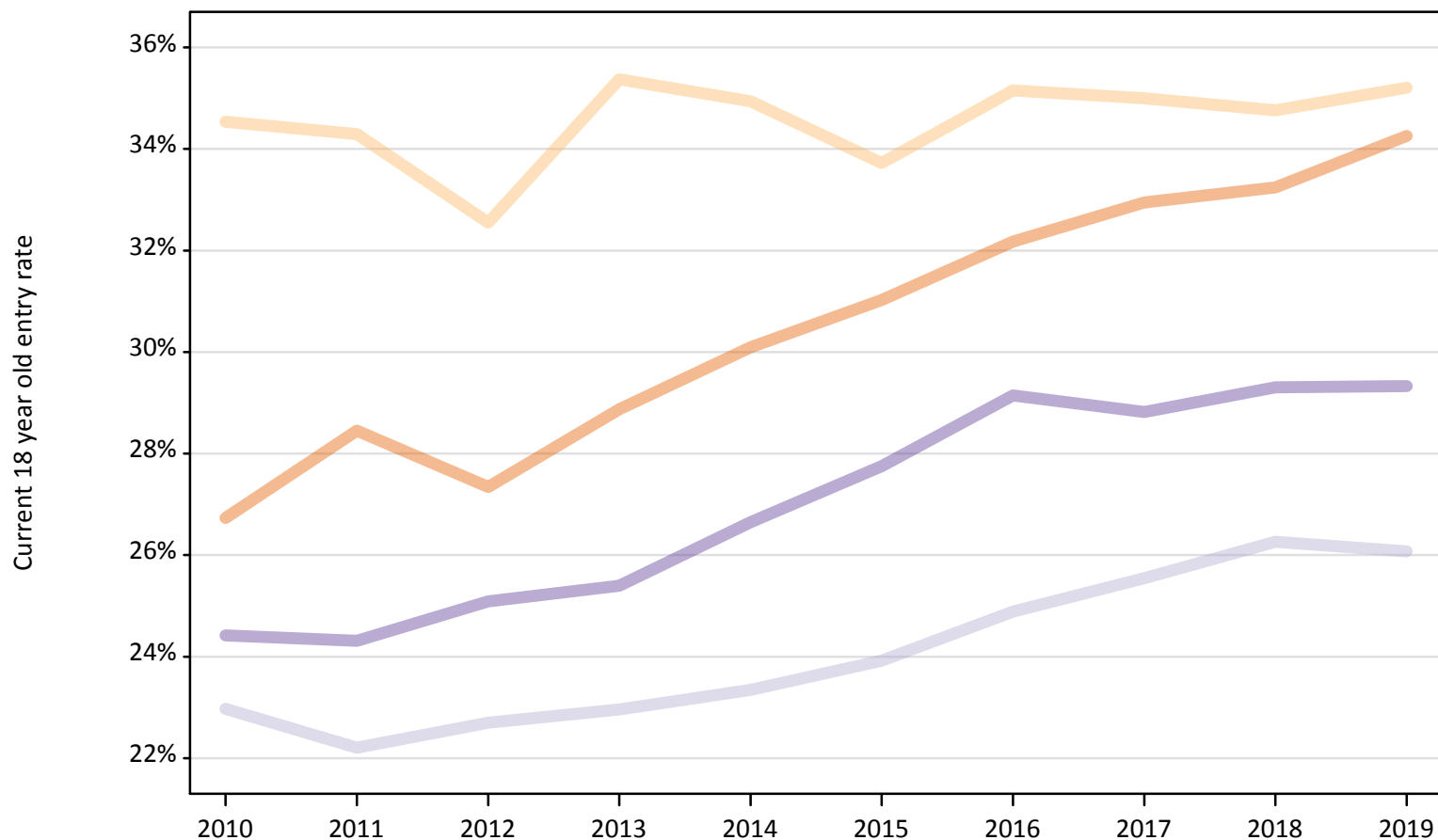
Selected age groups: difference between cycle and 2018 cycle

Domicile of applicant	Age group	2010	2011	2012	2013	2014	2015	2016	2017	2018	2019
Wales	17 and under	40%	28%	-16%	20%	-12%	-28%	-4%	-36%	0%	-16%
	18	-3%	-7%	-4%	-5%	-1%	4%	5%	2%	0%	-2%
	19	-4%	1%	5%	7%	11%	10%	13%	6%	0%	0%
	20 to 24	-4%	-3%	6%	7%	10%	9%	9%	11%	0%	0%
	25 and over	-23%	-23%	-26%	-18%	-9%	-8%	-13%	-10%	0%	-4%

Note: The percentage change is not recorded in the above table for groups with fewer than 10 placed applicants in that cycle or in the 2018 cycle.

### C.15 Entry rates for 18 year olds by UK country of domicile: 12 days after A level results day

Placed 18 year old applicants as a proportion of the 18 year old population



### C.16 Entry rates for 18 year olds by UK country of domicile: 12 days after A level results day

Placed 18 year old applicants as a proportion of the 18 year old population

Domicile of applicant	Age group	2010	2011	2012	2013	2014	2015	2016	2017	2018	2019
England	18	26.7%	28.5%	27.3%	28.9%	30.1%	31.0%	32.2%	32.9%	33.2%	34.3%
Northern Ireland	18	34.5%	34.3%	32.5%	35.4%	34.9%	33.7%	35.2%	35.0%	34.8%	35.2%
Scotland	18	23.0%	22.2%	22.7%	23.0%	23.3%	23.9%	24.9%	25.5%	26.3%	26.1%
Wales	18	24.4%	24.3%	25.1%	25.4%	26.6%	27.8%	29.1%	28.8%	29.3%	29.3%