

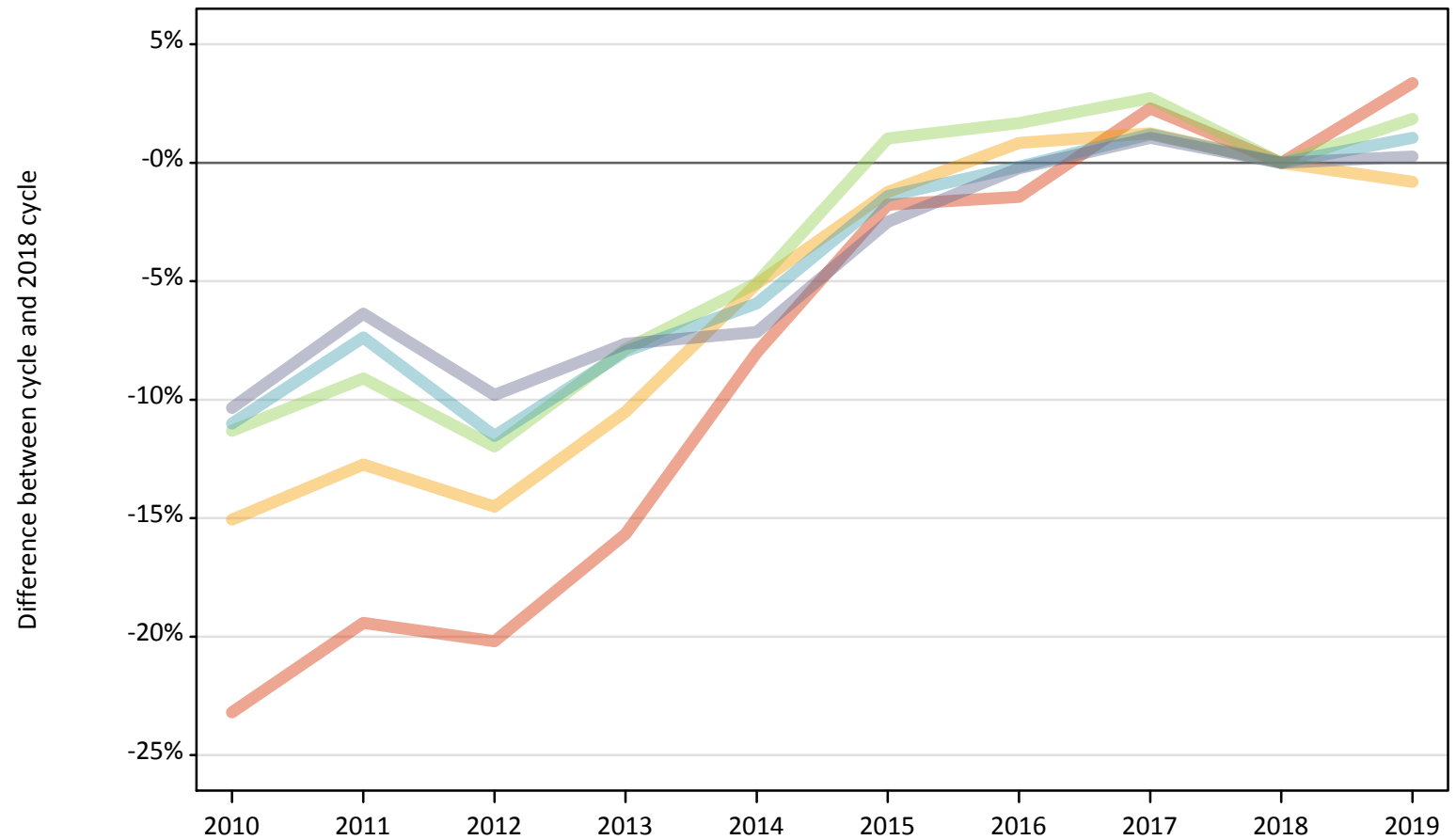
# Daily Clearing Analysis: POLAR4

Analysis at 00:05 on Tuesday 27 August 2019 (12 days after A level results day)

P.1 Placed 18 year old applicants from England by POLAR4 quintile: 12 days after A level results day

Placed 18 year old applicants: change relative to 2018 cycle totals

- Quintile 1
- Quintile 2
- Quintile 3
- Quintile 4
- Quintile 5



Note: The percentage change is not plotted in the above chart for groups with fewer than 30 placed applicants in any one cycle.

### P.2 Placed 18 year old applicants from England by POLAR4 quintile: 12 days after A level results day

Applicant Status	POLAR4	2010	2011	2012	2013	2014	2015	2016	2017	2018	2019
Placed	Quintile 1	16,810	17,640	17,470	18,460	20,140	21,500	21,580	22,390	21,890	22,620
	Quintile 2	25,910	26,620	26,080	27,300	28,950	30,130	30,760	30,890	30,510	30,260
	Quintile 3	33,000	33,820	32,750	34,280	35,310	37,590	37,830	38,220	37,200	37,890
	Quintile 4	41,210	42,890	40,970	42,620	43,560	45,660	46,230	46,870	46,310	46,800
	Quintile 5	59,220	61,840	59,580	61,000	61,330	64,400	65,900	66,750	66,050	66,230

### P.3 Placed 18 year old applicants from England by POLAR4 quintile: 12 days after A level results day

Placed 18 year old applicants: change relative to 2018 cycle totals

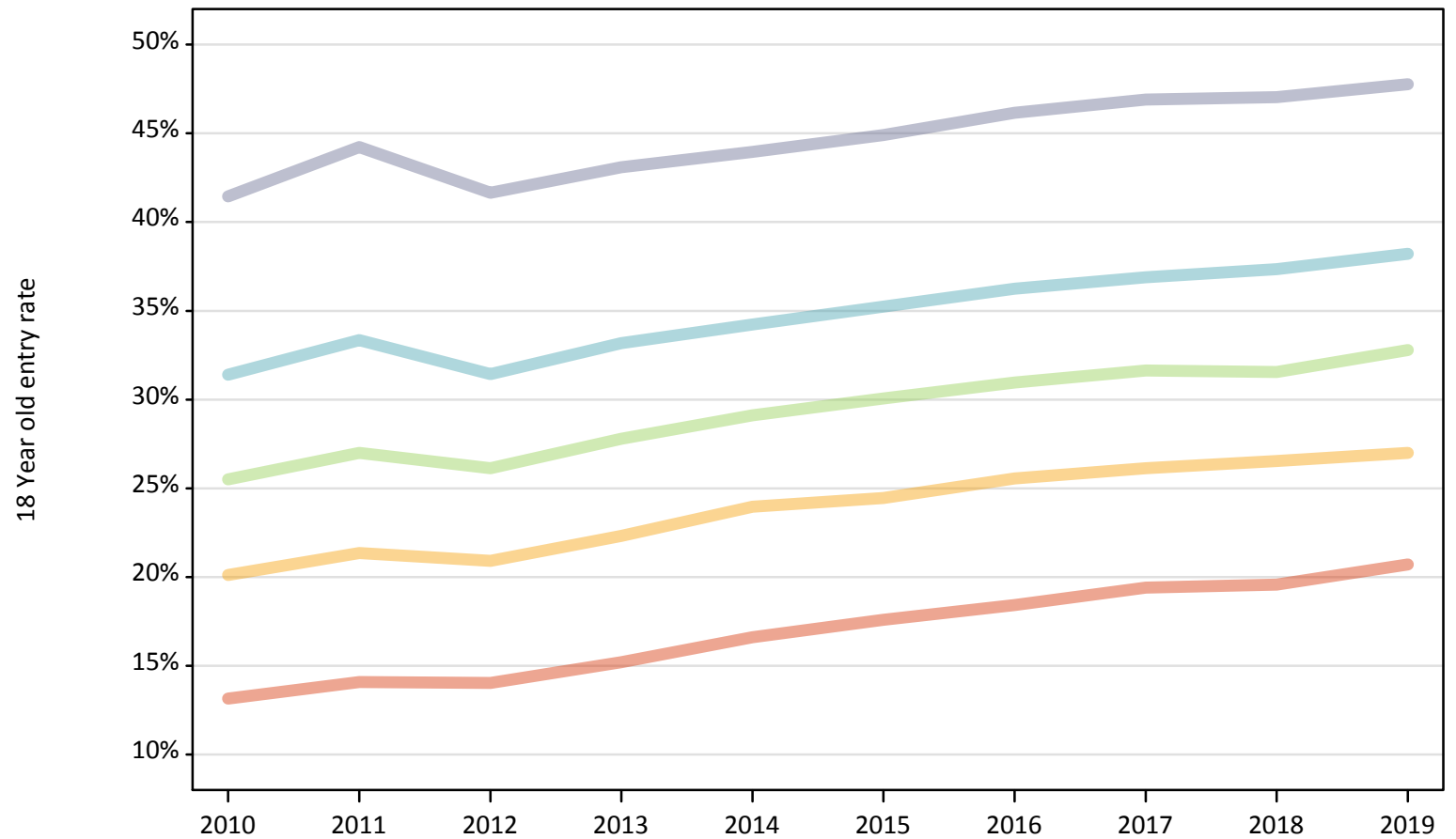
Applicant Status	POLAR4	2010	2011	2012	2013	2014	2015	2016	2017	2018	2019
Placed	Quintile 1	-23%	-19%	-20%	-16%	-8%	-2%	-1%	2%	0%	3%
	Quintile 2	-15%	-13%	-15%	-11%	-5%	-1%	1%	1%	0%	-1%
	Quintile 3	-11%	-9%	-12%	-8%	-5%	1%	2%	3%	0%	2%
	Quintile 4	-11%	-7%	-12%	-8%	-6%	-1%	-0%	1%	0%	1%
	Quintile 5	-10%	-6%	-10%	-8%	-7%	-2%	-0%	1%	0%	0%

Note: The percentage change is not recorded in the above table for groups with fewer than 10 placed applicants in that cycle or in the 2018 cycle.

**P.4 Placed 18 year old applicants from England by POLAR4 quintile: 12 days after A level results day**

Placed 18 year old applicants: entry rate

- Quintile 1
- Quintile 2
- Quintile 3
- Quintile 4
- Quintile 5



**P.5 Placed 18 year old applicants from England by POLAR4 quintile: 12 days after A level results day**

Placed 18 year old applicants: entry rate

Applicant Status	POLAR4	2010	2011	2012	2013	2014	2015	2016	2017	2018	2019
Placed	Quintile 1	13.1%	14.1%	14.0%	15.2%	16.6%	17.6%	18.4%	19.4%	19.6%	20.7%
	Quintile 2	20.1%	21.3%	20.9%	22.3%	24.0%	24.4%	25.6%	26.1%	26.5%	27.0%
	Quintile 3	25.5%	27.0%	26.1%	27.8%	29.1%	30.1%	31.0%	31.6%	31.6%	32.8%
	Quintile 4	31.4%	33.3%	31.4%	33.2%	34.2%	35.2%	36.2%	36.9%	37.3%	38.2%
	Quintile 5	41.4%	44.2%	41.7%	43.1%	44.0%	44.9%	46.2%	46.9%	47.0%	47.8%

**P.6 Placed 18 year old applicants from England by POLAR4 quintile: 12 days after A level results day**

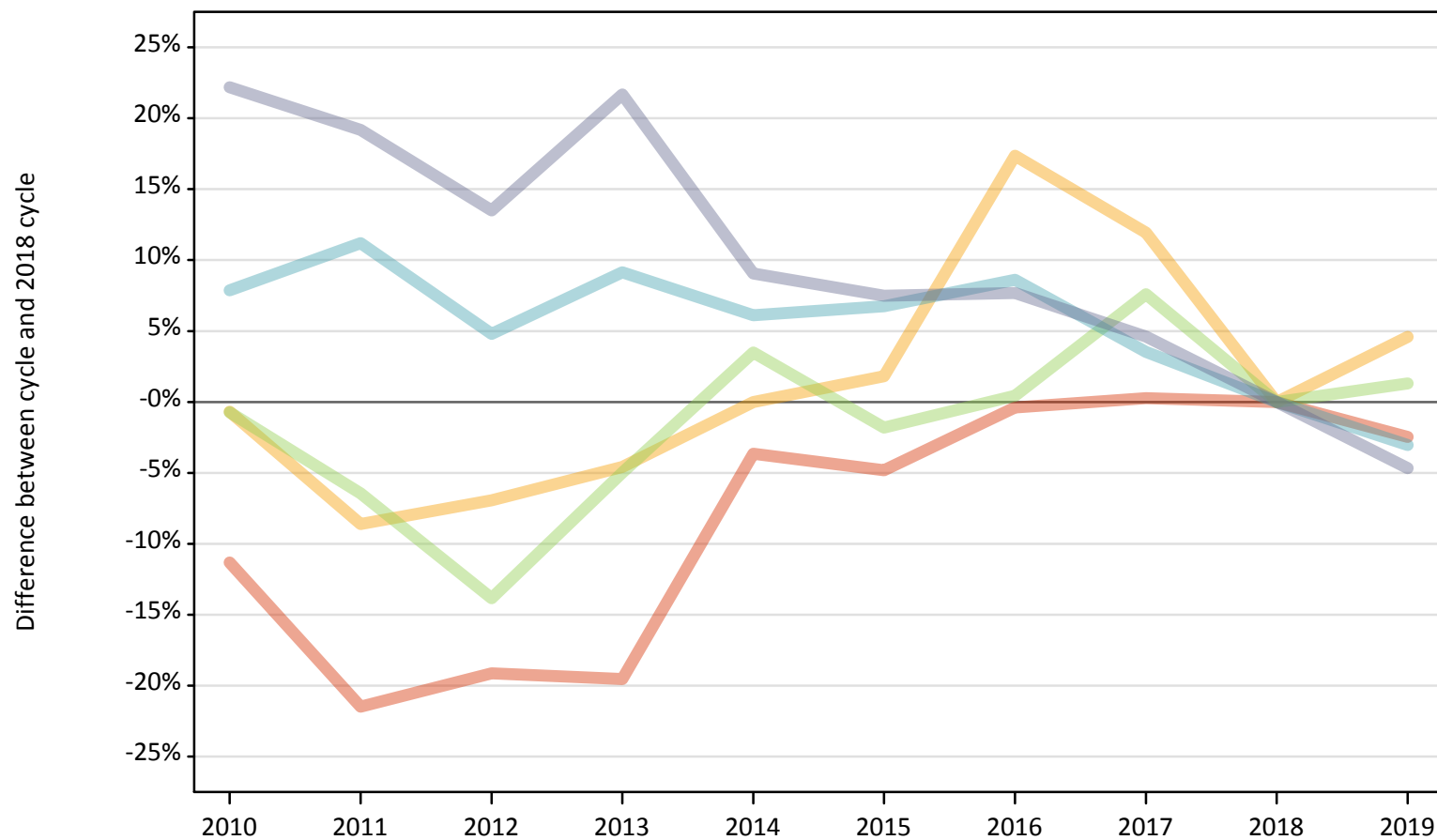
Placed 18 year old applicants: entry rate (indexed to 100 = Quintile 1)

Applicant Status	POLAR4	2010	2011	2012	2013	2014	2015	2016	2017	2018	2019
Placed	Quintile 1	100	100	100	100	100	100	100	100	100	100
	Quintile 2	153	152	149	147	144	139	139	135	136	130
	Quintile 3	194	192	186	183	175	171	168	163	161	158
	Quintile 4	239	237	224	218	206	200	197	190	191	185
	Quintile 5	315	314	297	284	265	255	250	242	240	231

## P.7 Placed 18 year old applicants from Northern Ireland by POLAR4 quintile: 12 days after A level results day

Placed 18 year old applicants: change relative to 2018 cycle totals

- Quintile 1
- Quintile 2
- Quintile 3
- Quintile 4
- Quintile 5



Note: The percentage change is not plotted in the above chart for groups with fewer than 30 placed applicants in any one cycle.

**P.8 Placed 18 year old applicants from Northern Ireland by POLAR4 quintile: 12 days after A level results day**

Applicant Status	POLAR4	2010	2011	2012	2013	2014	2015	2016	2017	2018	2019
Placed	Quintile 1	680	600	620	620	740	730	770	770	770	750
	Quintile 2	720	660	670	690	720	730	850	810	720	750
	Quintile 3	1,370	1,290	1,190	1,310	1,430	1,360	1,390	1,490	1,380	1,400
	Quintile 4	2,210	2,270	2,140	2,230	2,170	2,180	2,220	2,120	2,050	1,980
	Quintile 5	3,820	3,730	3,550	3,810	3,410	3,360	3,370	3,270	3,130	2,980

**P.9 Placed 18 year old applicants from Northern Ireland by POLAR4 quintile: 12 days after A level results day**

Placed 18 year old applicants: change relative to 2018 cycle totals

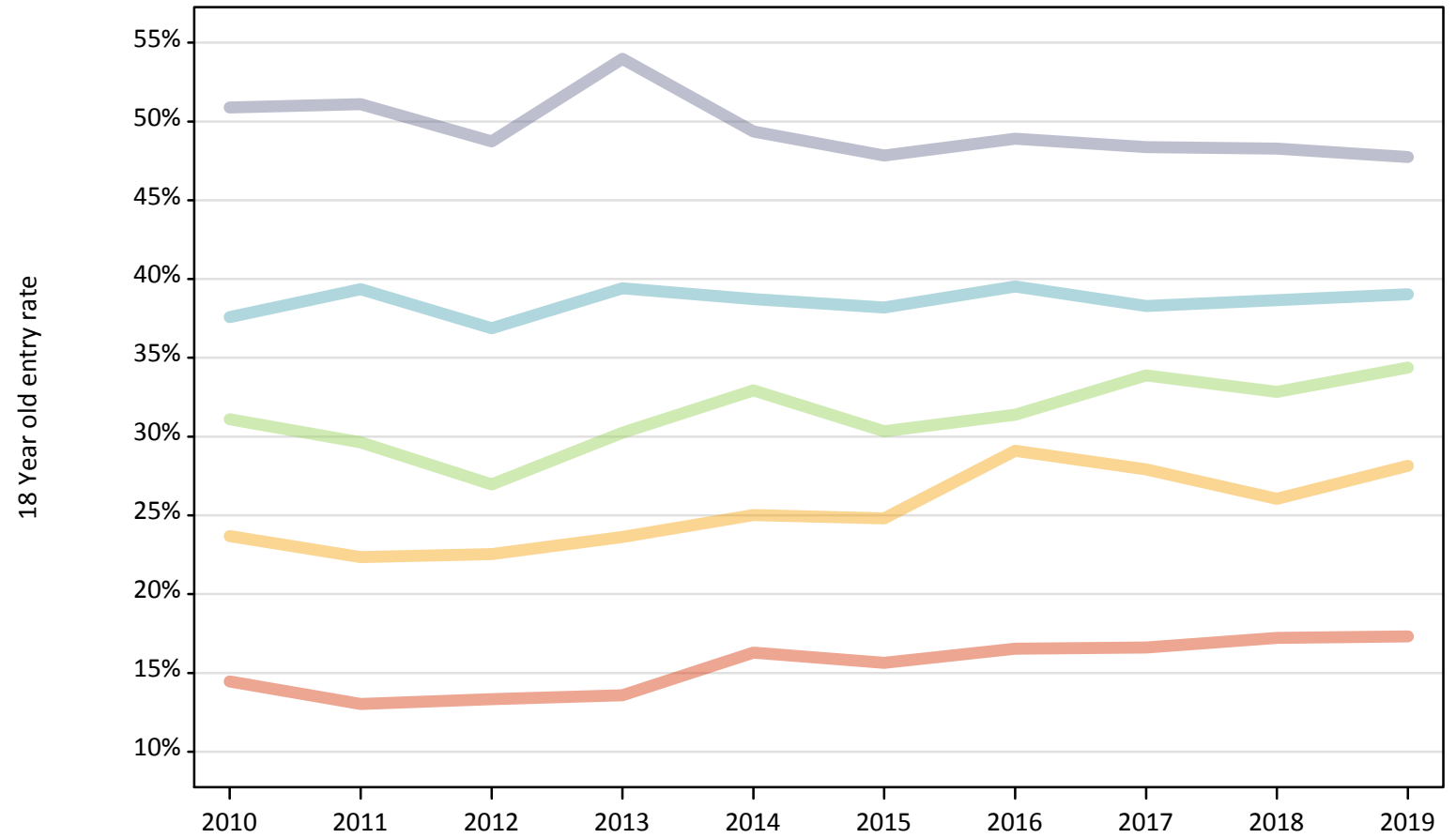
Applicant Status	POLAR4	2010	2011	2012	2013	2014	2015	2016	2017	2018	2019
Placed	Quintile 1	-11%	-21%	-19%	-20%	-4%	-5%	-0%	0%	0%	-2%
	Quintile 2	-1%	-9%	-7%	-5%	0%	2%	17%	12%	0%	5%
	Quintile 3	-1%	-6%	-14%	-5%	3%	-2%	0%	8%	0%	1%
	Quintile 4	8%	11%	5%	9%	6%	7%	9%	4%	0%	-3%
	Quintile 5	22%	19%	13%	22%	9%	7%	8%	5%	0%	-5%

Note: The percentage change is not recorded in the above table for groups with fewer than 10 placed applicants in that cycle or in the 2018 cycle.

**P.10 Placed 18 year old applicants from Northern Ireland by POLAR4 quintile: 12 days after A level results day**

Placed 18 year old applicants: entry rate

- Quintile 1
- Quintile 2
- Quintile 3
- Quintile 4
- Quintile 5



**P.11 Placed 18 year old applicants from Northern Ireland by POLAR4 quintile: 12 days after A level results day**

Placed 18 year old applicants: entry rate

Applicant Status	POLAR4	2010	2011	2012	2013	2014	2015	2016	2017	2018	2019
Placed	Quintile 1	14.5%	13.0%	13.3%	13.6%	16.3%	15.6%	16.5%	16.6%	17.2%	17.3%
	Quintile 2	23.7%	22.4%	22.5%	23.6%	25.0%	24.8%	29.1%	27.9%	26.0%	28.1%
	Quintile 3	31.1%	29.6%	27.0%	30.2%	32.9%	30.3%	31.4%	33.9%	32.8%	34.4%
	Quintile 4	37.6%	39.4%	36.9%	39.4%	38.7%	38.2%	39.5%	38.3%	38.7%	39.0%
	Quintile 5	50.9%	51.1%	48.7%	54.0%	49.4%	47.8%	48.9%	48.4%	48.3%	47.7%

**P.12 Placed 18 year old applicants from Northern Ireland by POLAR4 quintile: 12 days after A level results day**

Placed 18 year old applicants: entry rate (indexed to 100 = Quintile 1)

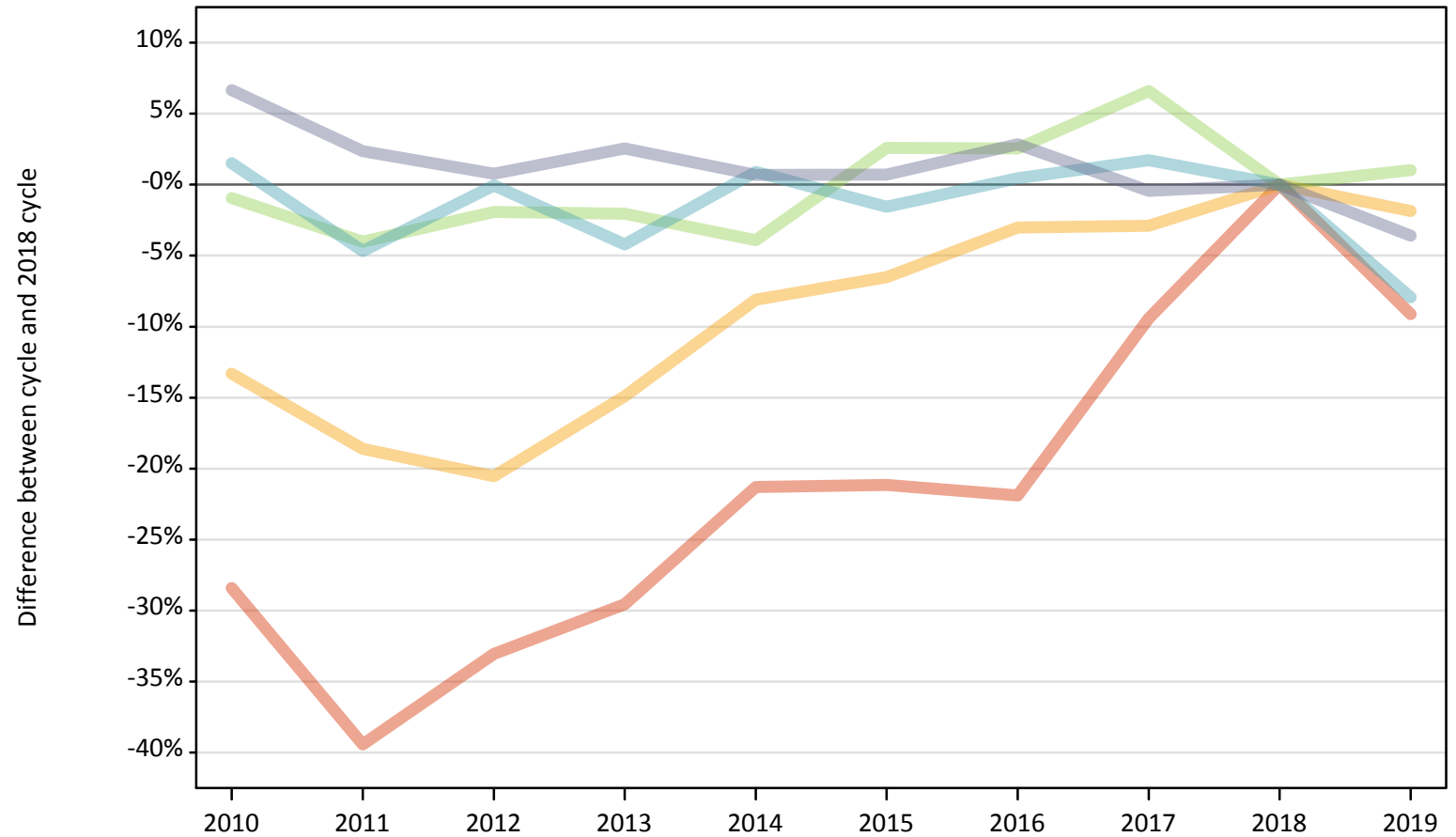
Applicant Status	POLAR4	2010	2011	2012	2013	2014	2015	2016	2017	2018	2019
Placed	Quintile 1	100	100	100	100	100	100	100	100	100	100
	Quintile 2	164	172	169	174	154	159	176	168	151	163
	Quintile 3	215	227	202	223	202	194	190	204	191	199
	Quintile 4	260	302	276	290	238	244	239	230	225	225
	Quintile 5	352	392	365	398	303	306	296	291	280	276



**P.13 Placed 18 year old applicants from Scotland by POLAR4 quintile: 12 days after A level results day**

Placed 18 year old applicants: change relative to 2018 cycle totals

- Quintile 1
- Quintile 2
- Quintile 3
- Quintile 4
- Quintile 5



Note: The percentage change is not plotted in the above chart for groups with fewer than 30 placed applicants in any one cycle.

**P.14 Placed 18 year old applicants from Scotland by POLAR4 quintile: 12 days after A level results day**

Applicant Status	POLAR4	2010	2011	2012	2013	2014	2015	2016	2017	2018	2019
Placed	Quintile 1	490	420	460	490	540	540	540	630	690	630
	Quintile 2	1,260	1,190	1,160	1,240	1,340	1,360	1,410	1,410	1,460	1,430
	Quintile 3	2,220	2,160	2,200	2,200	2,160	2,300	2,300	2,390	2,250	2,270
	Quintile 4	3,410	3,200	3,350	3,210	3,390	3,300	3,370	3,410	3,360	3,090
	Quintile 5	7,260	6,960	6,860	6,980	6,850	6,850	7,000	6,770	6,800	6,560

**P.15 Placed 18 year old applicants from Scotland by POLAR4 quintile: 12 days after A level results day**

Placed 18 year old applicants: change relative to 2018 cycle totals

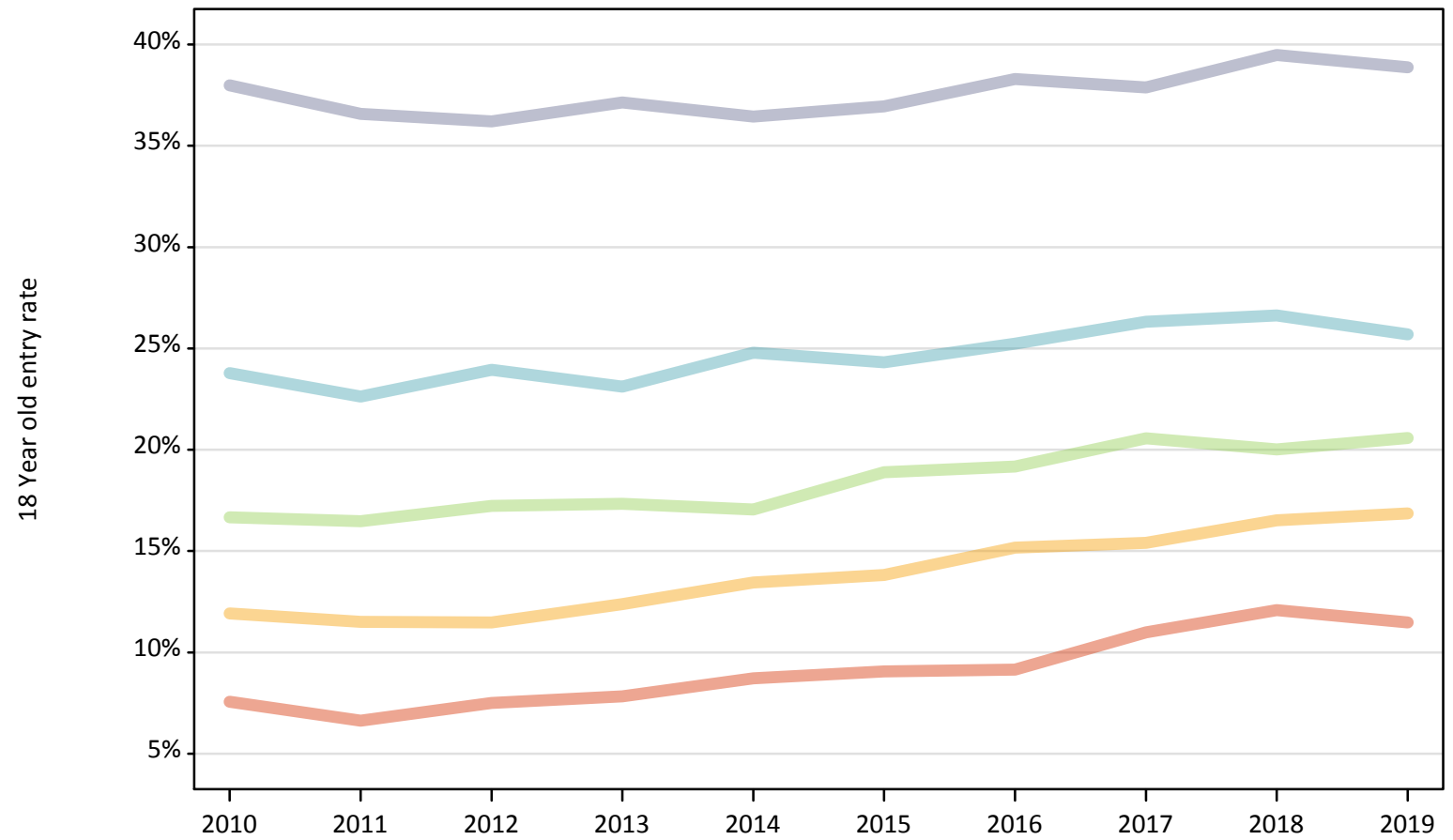
Applicant Status	POLAR4	2010	2011	2012	2013	2014	2015	2016	2017	2018	2019
Placed	Quintile 1	-28%	-39%	-33%	-30%	-21%	-21%	-22%	-9%	0%	-9%
	Quintile 2	-13%	-19%	-21%	-15%	-8%	-7%	-3%	-3%	0%	-2%
	Quintile 3	-1%	-4%	-2%	-2%	-4%	3%	3%	7%	0%	1%
	Quintile 4	2%	-5%	-0%	-4%	1%	-2%	0%	2%	0%	-8%
	Quintile 5	7%	2%	1%	3%	1%	1%	3%	-0%	0%	-4%

Note: The percentage change is not recorded in the above table for groups with fewer than 10 placed applicants in that cycle or in the 2018 cycle.

**P.16 Placed 18 year old applicants from Scotland by POLAR4 quintile: 12 days after A level results day**

Placed 18 year old applicants: entry rate

- Quintile 1
- Quintile 2
- Quintile 3
- Quintile 4
- Quintile 5



**P.17 Placed 18 year old applicants from Scotland by POLAR4 quintile: 12 days after A level results day**

Placed 18 year old applicants: entry rate

Applicant Status	POLAR4	2010	2011	2012	2013	2014	2015	2016	2017	2018	2019
Placed	Quintile 1	7.6%	6.6%	7.5%	7.8%	8.7%	9.1%	9.1%	11.0%	12.1%	11.5%
	Quintile 2	11.9%	11.5%	11.5%	12.4%	13.5%	13.8%	15.2%	15.4%	16.5%	16.9%
	Quintile 3	16.7%	16.5%	17.2%	17.3%	17.1%	18.9%	19.2%	20.6%	20.0%	20.6%
	Quintile 4	23.8%	22.6%	24.0%	23.1%	24.8%	24.3%	25.2%	26.3%	26.6%	25.7%
	Quintile 5	38.0%	36.6%	36.2%	37.1%	36.4%	36.9%	38.3%	37.9%	39.5%	38.9%

**P.18 Placed 18 year old applicants from Scotland by POLAR4 quintile: 12 days after A level results day**

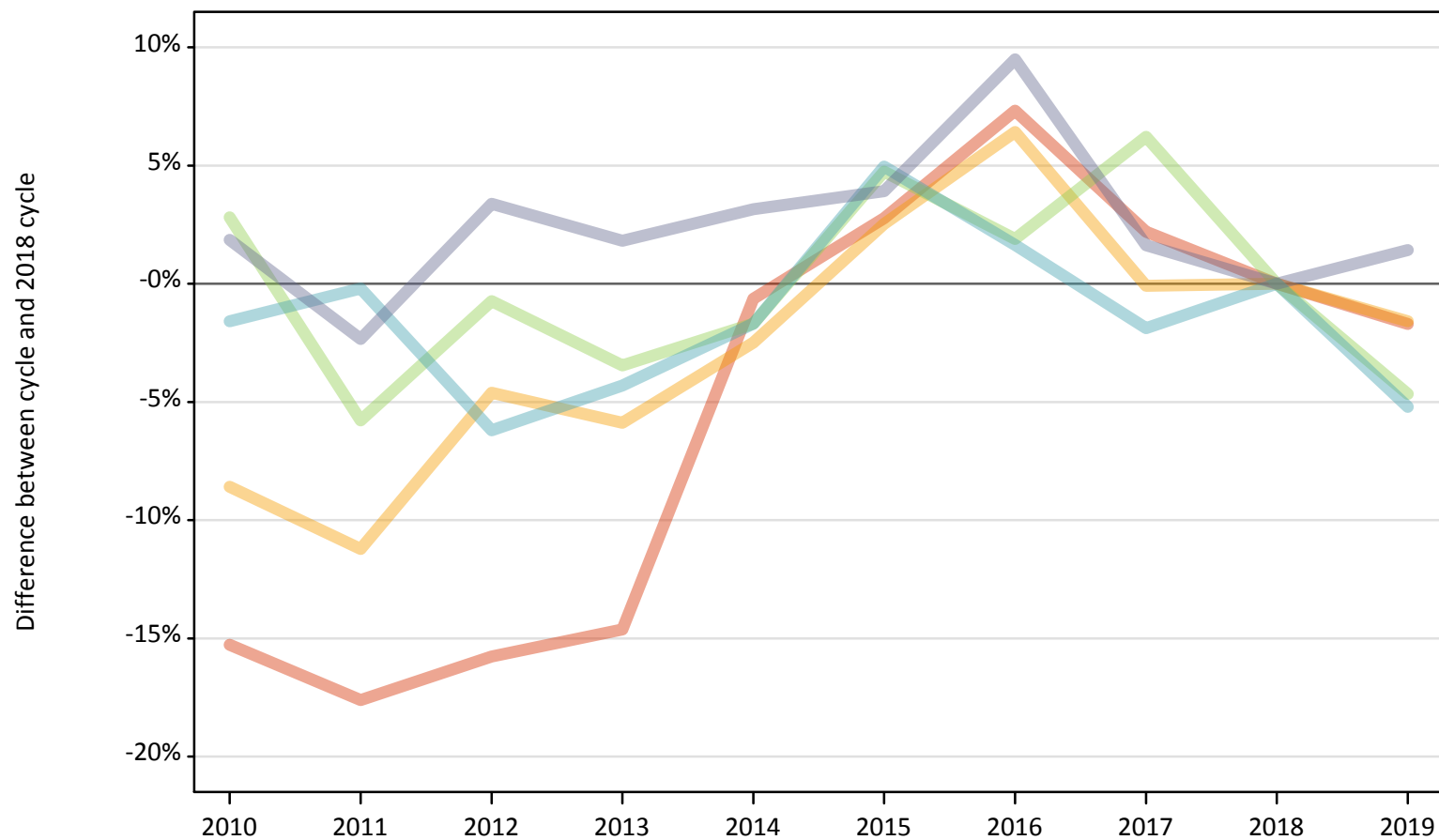
Placed 18 year old applicants: entry rate (indexed to 100 = Quintile 1)

Applicant Status	POLAR4	2010	2011	2012	2013	2014	2015	2016	2017	2018	2019
Placed	Quintile 1	100	100	100	100	100	100	100	100	100	100
	Quintile 2	158	174	153	158	154	152	166	140	137	147
	Quintile 3	221	248	230	221	196	208	209	187	166	179
	Quintile 4	315	341	319	295	284	268	276	240	220	224
	Quintile 5	502	552	483	474	418	408	419	345	327	339

### P.19 Placed 18 year old applicants from Wales by POLAR4 quintile: 12 days after A level results day

Placed 18 year old applicants: change relative to 2018 cycle totals

- Quintile 1
- Quintile 2
- Quintile 3
- Quintile 4
- Quintile 5



Note: The percentage change is not plotted in the above chart for groups with fewer than 30 placed applicants in any one cycle.

**P.20 Placed 18 year old applicants from Wales by POLAR4 quintile: 12 days after A level results day**

Applicant Status	POLAR4	2010	2011	2012	2013	2014	2015	2016	2017	2018	2019
Placed	Quintile 1	1,190	1,160	1,190	1,200	1,400	1,450	1,510	1,440	1,410	1,380
	Quintile 2	2,020	1,960	2,110	2,080	2,160	2,270	2,350	2,210	2,210	2,180
	Quintile 3	2,380	2,180	2,300	2,240	2,280	2,430	2,360	2,460	2,320	2,210
	Quintile 4	1,990	2,010	1,890	1,930	1,980	2,120	2,050	1,980	2,020	1,910
	Quintile 5	2,140	2,050	2,170	2,130	2,160	2,180	2,300	2,130	2,100	2,130

**P.21 Placed 18 year old applicants from Wales by POLAR4 quintile: 12 days after A level results day**

Placed 18 year old applicants: change relative to 2018 cycle totals

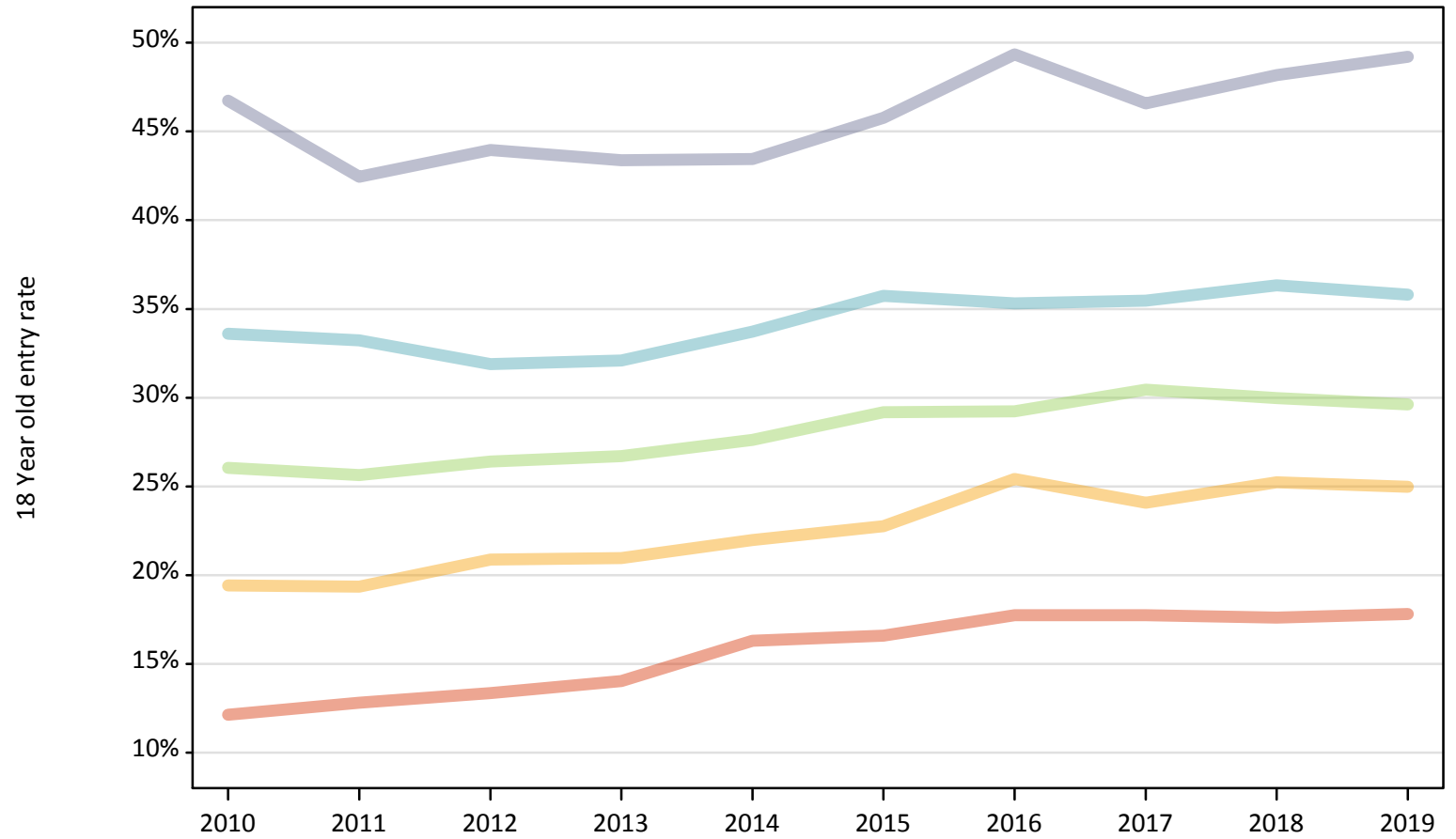
Applicant Status	POLAR4	2010	2011	2012	2013	2014	2015	2016	2017	2018	2019
Placed	Quintile 1	-15%	-18%	-16%	-15%	-1%	3%	7%	2%	0%	-2%
	Quintile 2	-9%	-11%	-5%	-6%	-2%	3%	6%	-0%	0%	-2%
	Quintile 3	3%	-6%	-1%	-3%	-2%	5%	2%	6%	0%	-5%
	Quintile 4	-2%	-0%	-6%	-4%	-2%	5%	2%	-2%	0%	-5%
	Quintile 5	2%	-2%	3%	2%	3%	4%	9%	2%	0%	1%

Note: The percentage change is not recorded in the above table for groups with fewer than 10 placed applicants in that cycle or in the 2018 cycle.

**P.22 Placed 18 year old applicants from Wales by POLAR4 quintile: 12 days after A level results day**

Placed 18 year old applicants: entry rate

- Quintile 1
- Quintile 2
- Quintile 3
- Quintile 4
- Quintile 5



**P.23 Placed 18 year old applicants from Wales by POLAR4 quintile: 12 days after A level results day**

Placed 18 year old applicants: entry rate

Applicant Status	POLAR4	2010	2011	2012	2013	2014	2015	2016	2017	2018	2019
Placed	Quintile 1	12.1%	12.8%	13.4%	14.0%	16.3%	16.6%	17.7%	17.7%	17.6%	17.8%
	Quintile 2	19.4%	19.4%	20.9%	21.0%	22.0%	22.8%	25.4%	24.1%	25.2%	25.0%
	Quintile 3	26.1%	25.6%	26.4%	26.7%	27.6%	29.2%	29.2%	30.5%	30.0%	29.6%
	Quintile 4	33.6%	33.2%	31.9%	32.1%	33.7%	35.7%	35.3%	35.5%	36.3%	35.8%
	Quintile 5	46.7%	42.4%	44.0%	43.4%	43.4%	45.8%	49.3%	46.6%	48.2%	49.2%

**P.24 Placed 18 year old applicants from Wales by POLAR4 quintile: 12 days after A level results day**

Placed 18 year old applicants: entry rate (indexed to 100 = Quintile 1)

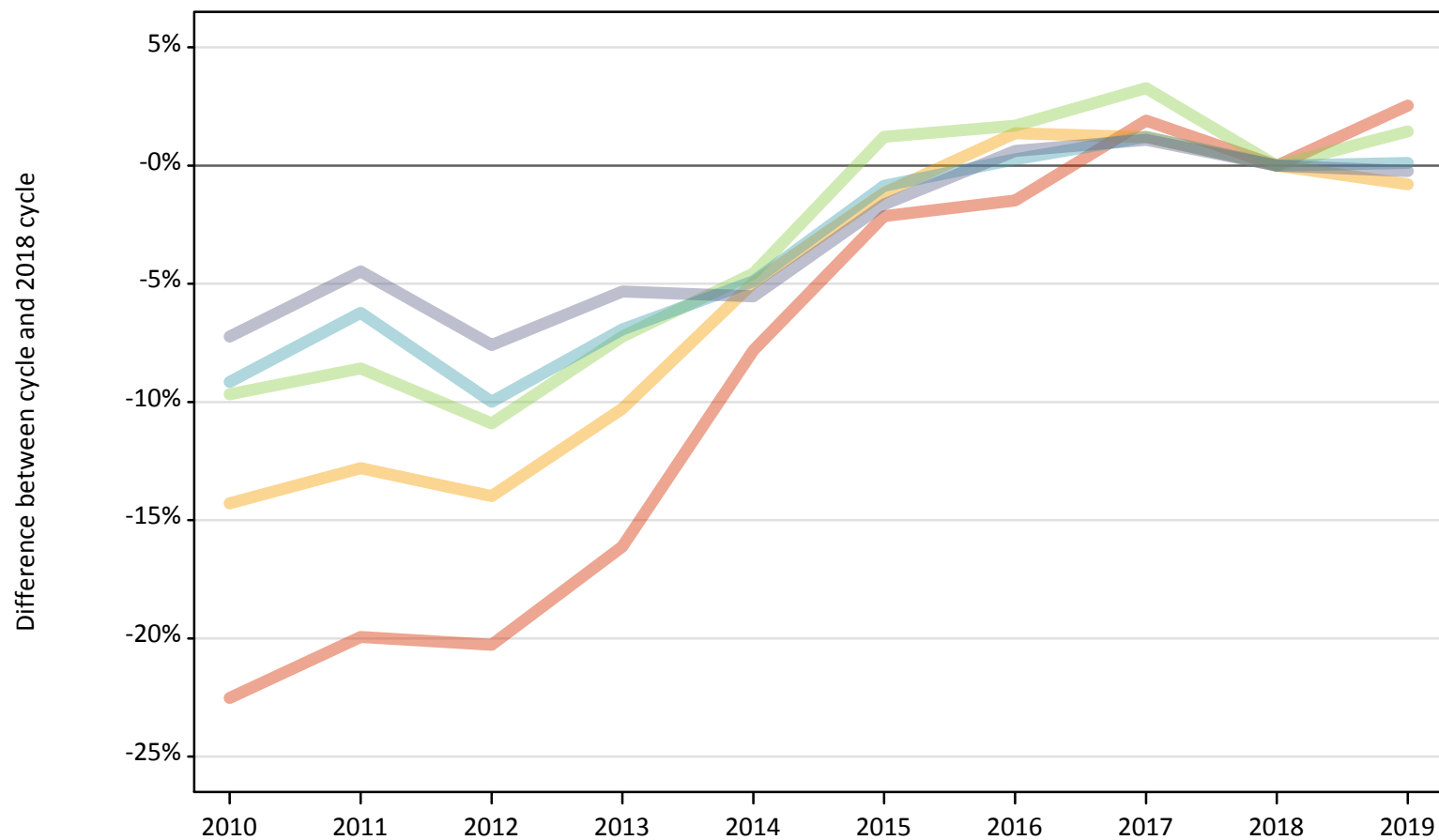
Applicant Status	POLAR4	2010	2011	2012	2013	2014	2015	2016	2017	2018	2019
Placed	Quintile 1	100	100	100	100	100	100	100	100	100	100
	Quintile 2	160	151	156	149	135	137	143	136	143	140
	Quintile 3	215	200	198	190	169	176	165	172	170	166
	Quintile 4	277	259	239	229	207	215	199	200	206	201
	Quintile 5	385	331	329	309	266	276	278	263	274	276



## P.25 Placed 18 year old applicants from the UK by POLAR4 quintile: 12 days after A level results day

Placed 18 year old applicants: change relative to 2018 cycle totals

- Quintile 1
- Quintile 2
- Quintile 3
- Quintile 4
- Quintile 5



Note: The percentage change is not plotted in the above chart for groups with fewer than 30 placed applicants in any one cycle.

**P.26 Placed 18 year old applicants from the UK by POLAR4 quintile: 12 days after A level results day**

Applicant Status	POLAR4	2010	2011	2012	2013	2014	2015	2016	2017	2018	2019
Placed	Quintile 1	19,180	19,820	19,740	20,770	22,820	24,220	24,390	25,230	24,760	25,380
	Quintile 2	29,910	30,430	30,010	31,310	33,160	34,490	35,370	35,320	34,890	34,620
	Quintile 3	38,970	39,450	38,440	40,030	41,180	43,670	43,880	44,560	43,150	43,770
	Quintile 4	48,810	50,380	48,360	50,000	51,100	53,260	53,870	54,380	53,730	53,780
	Quintile 5	72,430	74,580	72,150	73,920	73,750	76,790	78,560	78,920	78,080	77,890

**P.27 Placed 18 year old applicants from the UK by POLAR4 quintile: 12 days after A level results day**

Placed 18 year old applicants: change relative to 2018 cycle totals

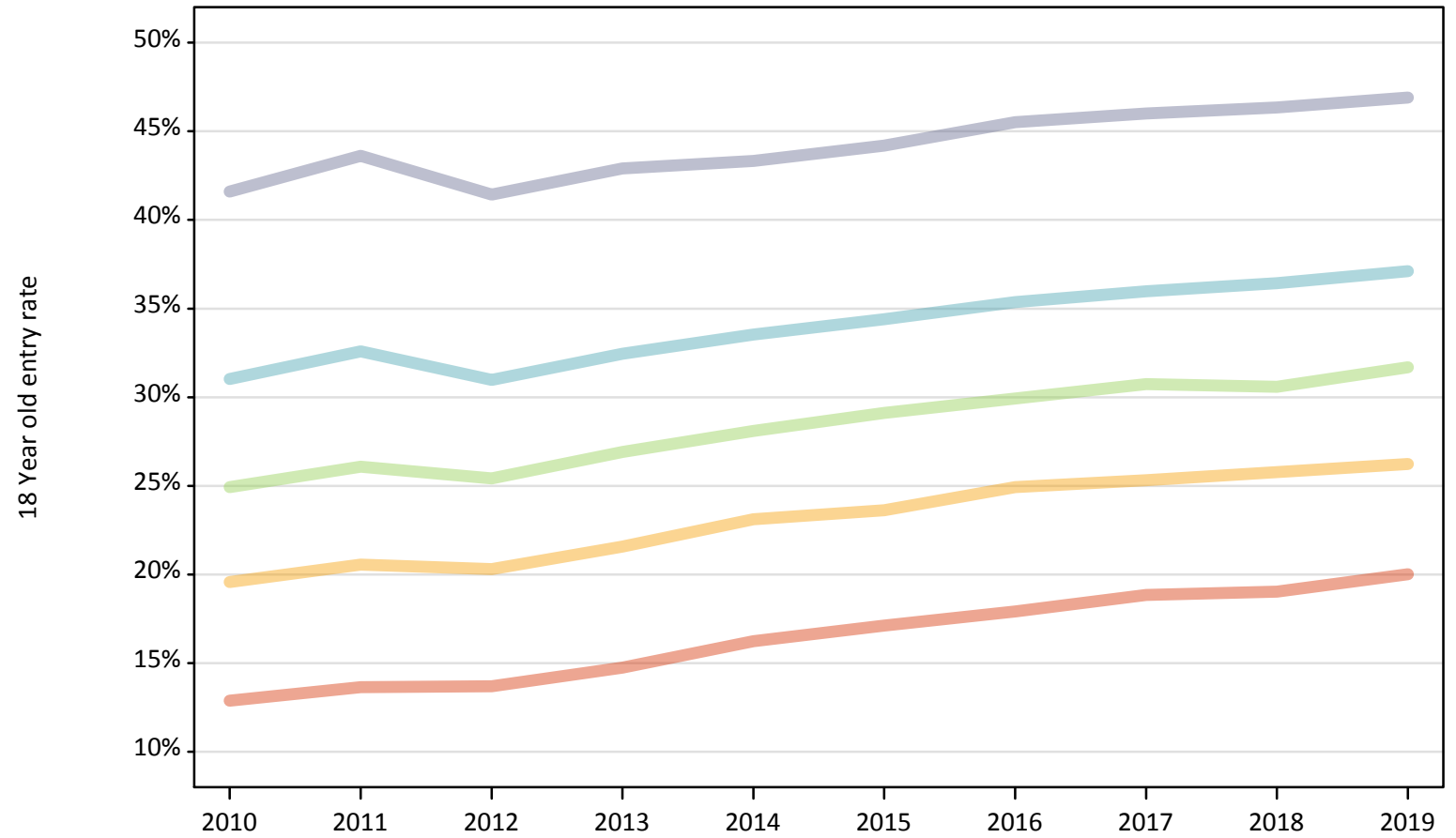
Applicant Status	POLAR4	2010	2011	2012	2013	2014	2015	2016	2017	2018	2019
Placed	Quintile 1	-23%	-20%	-20%	-16%	-8%	-2%	-1%	2%	0%	3%
	Quintile 2	-14%	-13%	-14%	-10%	-5%	-1%	1%	1%	0%	-1%
	Quintile 3	-10%	-9%	-11%	-7%	-5%	1%	2%	3%	0%	1%
	Quintile 4	-9%	-6%	-10%	-7%	-5%	-1%	0%	1%	0%	0%
	Quintile 5	-7%	-4%	-8%	-5%	-6%	-2%	1%	1%	0%	-0%

Note: The percentage change is not recorded in the above table for groups with fewer than 10 placed applicants in that cycle or in the 2018 cycle.

## P.28 Placed 18 year old applicants from the UK by POLAR4 quintile: 12 days after A level results day

Placed 18 year old applicants: entry rate

- Quintile 1
- Quintile 2
- Quintile 3
- Quintile 4
- Quintile 5



**P.29 Placed 18 year old applicants from the UK by POLAR4 quintile: 12 days after A level results day**

Placed 18 year old applicants: entry rate

Applicant Status	POLAR4	2010	2011	2012	2013	2014	2015	2016	2017	2018	2019
Placed	Quintile 1	12.9%	13.7%	13.7%	14.8%	16.2%	17.1%	17.9%	18.9%	19.0%	20.0%
	Quintile 2	19.6%	20.5%	20.3%	21.6%	23.1%	23.6%	24.9%	25.3%	25.8%	26.2%
	Quintile 3	24.9%	26.1%	25.4%	26.9%	28.1%	29.1%	29.9%	30.7%	30.6%	31.7%
	Quintile 4	31.0%	32.6%	31.0%	32.5%	33.5%	34.4%	35.4%	36.0%	36.4%	37.1%
	Quintile 5	41.6%	43.6%	41.4%	42.9%	43.3%	44.2%	45.5%	46.0%	46.3%	46.9%

**P.30 Placed 18 year old applicants from the UK by POLAR4 quintile: 12 days after A level results day**

Placed 18 year old applicants: entry rate (indexed to 100 = Quintile 1)

Applicant Status	POLAR4	2010	2011	2012	2013	2014	2015	2016	2017	2018	2019
Placed	Quintile 1	100	100	100	100	100	100	100	100	100	100
	Quintile 2	152	151	148	146	142	138	139	134	135	131
	Quintile 3	194	191	186	182	173	170	167	163	161	158
	Quintile 4	241	239	226	220	207	201	197	191	191	185
	Quintile 5	323	319	303	291	267	258	254	244	243	234