

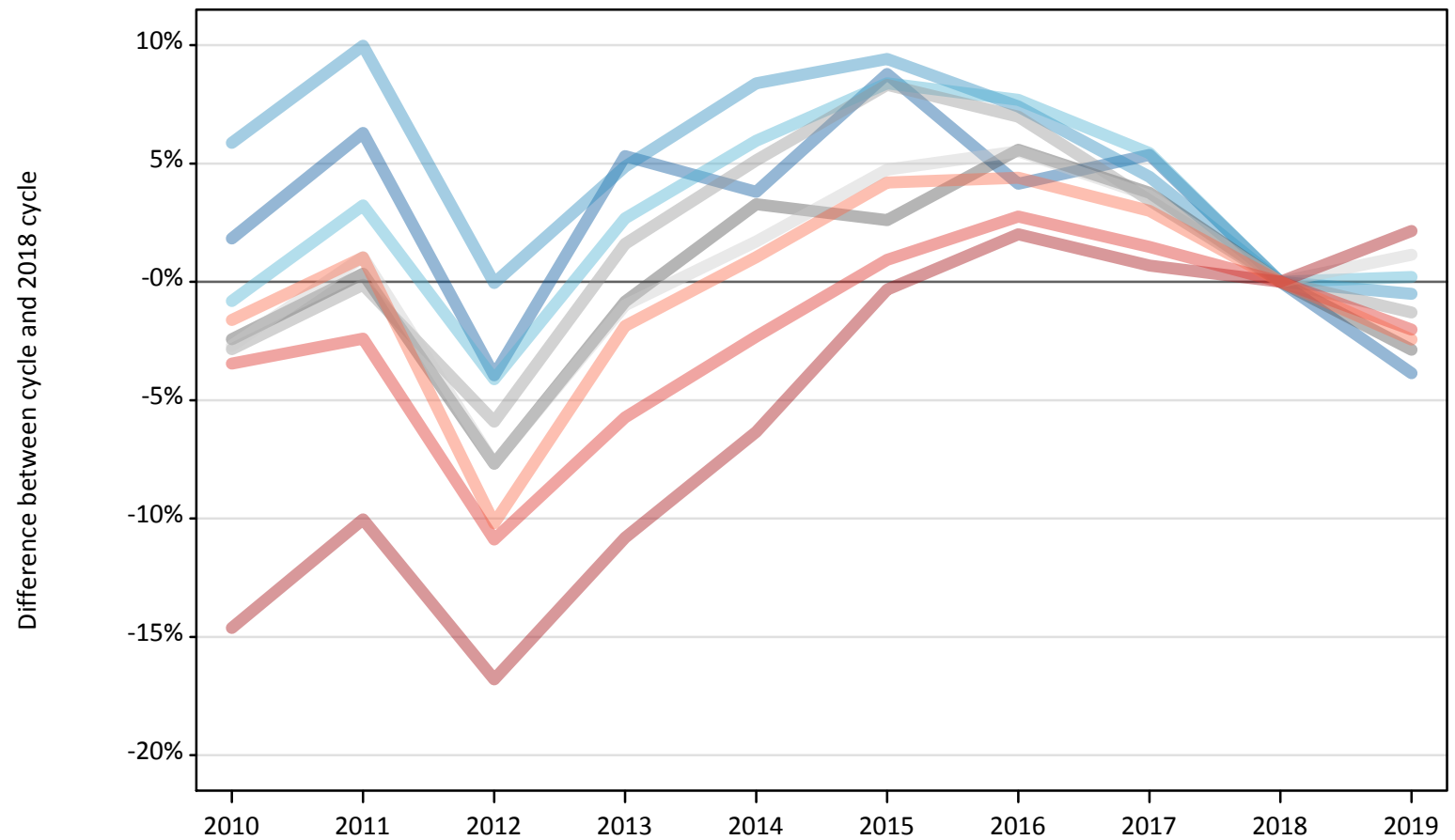
# Daily Clearing Analysis: Region

Analysis at 00:05 on Tuesday 27 August 2019 (12 days after A level results day)

## R.1 Placed applicants by region of domicile: 12 days after A level results day

Placed applicants: change relative to 2018 cycle totals

- North East
- North West
- Yorkshire and The Humber
- East Midlands
- West Midlands
- East of England
- London
- South East
- South West



Note: The percentage change is not plotted in the above chart for groups with fewer than 30 placed applicants in any one cycle.

## R.2 Placed applicants by region of domicile: 12 days after A level results day

Applicant Status	Domicile	2010	2011	2012	2013	2014	2015	2016	2017	2018	2019
Placed	North East	14,760	15,410	13,930	15,270	15,050	15,770	15,100	15,280	14,500	13,940
	North West	46,440	48,230	43,840	45,990	47,540	47,990	47,110	45,810	43,860	43,640
	Yorkshire and The Humber	30,450	31,690	29,430	31,520	32,530	33,270	33,060	32,370	30,700	30,760
	East Midlands	26,050	26,790	24,650	26,480	27,580	27,400	28,190	27,710	26,700	25,930
	West Midlands	34,670	35,630	33,570	36,250	37,510	38,650	38,170	36,910	35,680	35,220
	East of England	34,730	36,060	32,950	35,340	36,290	37,380	37,660	36,990	35,690	36,100
	London	59,090	62,270	57,590	61,730	64,830	68,990	70,610	69,690	69,220	70,710
	South East	55,830	56,450	51,540	54,520	56,500	58,370	59,430	58,690	57,840	56,670
	South West	31,470	32,320	28,730	31,390	32,320	33,330	33,400	32,950	31,990	31,210
	(England total)	333,490	344,850	316,220	338,490	350,140	361,150	362,720	356,380	346,160	344,170
	Scotland	28,360	27,890	27,940	28,460	29,110	31,960	33,300	34,020	34,420	33,290
	Northern Ireland	13,340	13,510	12,660	14,000	14,040	13,730	14,600	14,090	13,580	13,340
	Wales	17,180	17,020	17,620	17,800	18,570	19,010	19,140	18,690	18,240	17,930
	UK	392,370	403,270	374,430	398,750	411,860	425,850	429,750	423,190	412,400	408,720

### R.3 Placed applicants by region of domicile: 12 days after A level results day

Placed applicants: change relative to 2018 cycle totals

Applicant Status	Domicile	2010	2011	2012	2013	2014	2015	2016	2017	2018	2019
Placed	North East	2%	6%	-4%	5%	4%	9%	4%	5%	0%	-4%
	North West	6%	10%	-0%	5%	8%	9%	7%	4%	0%	-1%
	Yorkshire and The Humber	-1%	3%	-4%	3%	6%	8%	8%	5%	0%	0%
	East Midlands	-2%	0%	-8%	-1%	3%	3%	6%	4%	0%	-3%
	West Midlands	-3%	-0%	-6%	2%	5%	8%	7%	3%	0%	-1%
	East of England	-3%	1%	-8%	-1%	2%	5%	6%	4%	0%	1%
	London	-15%	-10%	-17%	-11%	-6%	-0%	2%	1%	0%	2%
	South East	-3%	-2%	-11%	-6%	-2%	1%	3%	1%	0%	-2%
	South West	-2%	1%	-10%	-2%	1%	4%	4%	3%	0%	-2%
	(England total)	-4%	-0%	-9%	-2%	1%	4%	5%	3%	0%	-1%
	Scotland	-18%	-19%	-19%	-17%	-15%	-7%	-3%	-1%	0%	-3%
	Northern Ireland	-2%	-1%	-7%	3%	3%	1%	7%	4%	0%	-2%
	Wales	-6%	-7%	-3%	-2%	2%	4%	5%	3%	0%	-2%
	UK	-5%	-2%	-9%	-3%	-0%	3%	4%	3%	0%	-1%

Note: The percentage change is not recorded in the above table for groups with fewer than 10 placed applicants in that cycle or in the 2018 cycle.

#### R.4 Placed applicants by region of domicile: 12 days after A level results day

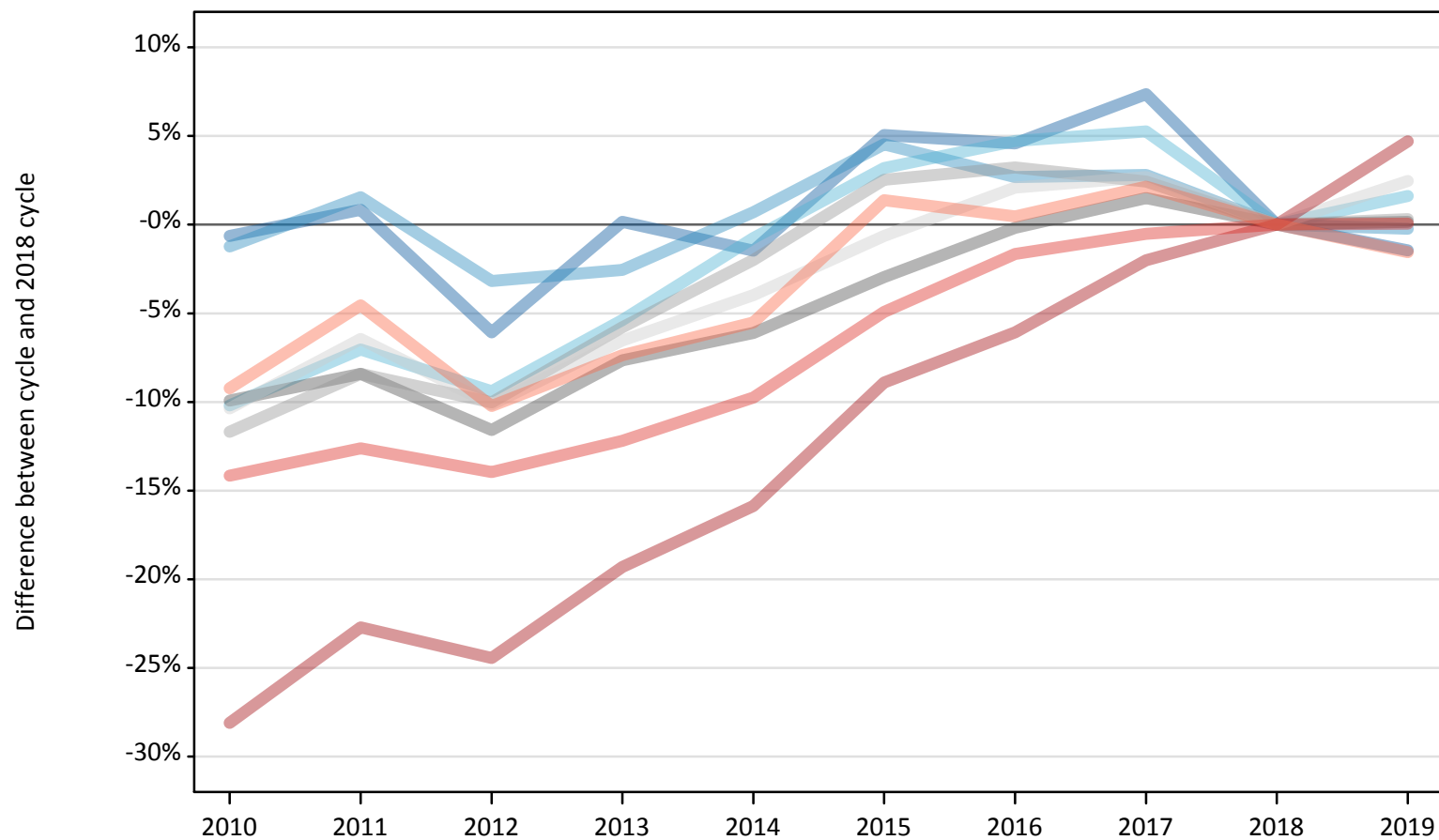
Placed applicants: absolute change relative to 2018 cycle totals

Applicant Status	Domicile	2010	2011	2012	2013	2014	2015	2016	2017	2018	2019
Placed	North East	270	910	-570	770	550	1,270	600	780	0	-560
	North West	2,580	4,380	-20	2,140	3,680	4,130	3,250	1,950	0	-220
	Yorkshire and The Humber	-250	990	-1,260	820	1,830	2,580	2,360	1,670	0	60
	East Midlands	-650	90	-2,050	-230	880	700	1,490	1,010	0	-770
	West Midlands	-1,010	-40	-2,110	570	1,830	2,970	2,490	1,230	0	-460
	East of England	-960	370	-2,740	-350	610	1,690	1,970	1,300	0	410
	London	-10,130	-6,950	-11,620	-7,490	-4,390	-220	1,390	470	0	1,490
	South East	-2,000	-1,390	-6,300	-3,310	-1,330	530	1,600	850	0	-1,160
	South West	-510	330	-3,260	-600	340	1,340	1,410	960	0	-780
	(England total)	-12,670	-1,310	-29,940	-7,670	3,990	14,990	16,560	10,220	0	-1,990
	Scotland	-6,060	-6,530	-6,480	-5,960	-5,310	-2,460	-1,120	-390	0	-1,130
	Northern Ireland	-240	-70	-920	420	460	150	1,010	510	0	-250
	Wales	-1,060	-1,220	-620	-440	330	780	900	460	0	-310
	UK	-20,020	-9,120	-37,970	-13,650	-540	13,450	17,360	10,790	0	-3,680

## R.5 Placed 18 year old applicants by region of domicile: 12 days after A level results day

Placed 18 year old applicants: change relative to 2018 cycle totals

- North East
- North West
- Yorkshire and The Humber
- East Midlands
- West Midlands
- East of England
- London
- South East
- South West



Note: The percentage change is not plotted in the above chart for groups with fewer than 30 placed applicants in any one cycle.

## R.6 Placed 18 year old applicants by region of domicile: 12 days after A level results day

Applicant Status	Domicile	2010	2011	2012	2013	2014	2015	2016	2017	2018	2019
Placed	North East	7,980	8,100	7,550	8,050	7,920	8,440	8,400	8,630	8,030	7,920
	North West	25,650	26,370	25,140	25,310	26,150	27,150	26,670	26,700	25,970	25,910
	Yorkshire and The Humber	16,330	16,910	16,480	17,210	18,050	18,770	19,040	19,140	18,190	18,480
	East Midlands	14,440	14,680	14,170	14,800	15,050	15,550	16,000	16,270	16,030	16,050
	West Midlands	18,230	18,900	18,570	19,440	20,220	21,160	21,300	21,140	20,640	20,700
	East of England	19,990	20,870	20,040	20,850	21,420	22,160	22,770	22,900	22,310	22,860
	London	27,780	29,860	29,200	31,180	32,510	35,200	36,300	37,860	38,640	40,460
	South East	30,520	31,060	30,590	31,210	32,080	33,800	34,960	35,360	35,550	35,570
	South West	15,590	16,400	15,420	15,910	16,230	17,420	17,260	17,550	17,180	16,910
	(England total)	176,510	183,150	177,150	183,950	189,630	199,640	202,700	205,550	202,530	204,850
	Scotland	14,670	13,960	14,060	14,140	14,310	14,400	14,640	14,650	14,590	14,040
	Northern Ireland	8,810	8,570	8,180	8,670	8,480	8,380	8,600	8,470	8,060	7,880
	Wales	9,740	9,380	9,670	9,600	9,990	10,460	10,580	10,240	10,080	9,860
	UK	209,730	215,060	209,070	216,370	222,410	232,870	236,520	238,900	235,260	236,630

## R.7 Placed 18 year old applicants by region of domicile: 12 days after A level results day

Placed 18 year old applicants: change relative to 2018 cycle totals

Applicant Status	Domicile	2010	2011	2012	2013	2014	2015	2016	2017	2018	2019
Placed	North East	-1%	1%	-6%	0%	-1%	5%	5%	7%	0%	-1%
	North West	-1%	2%	-3%	-3%	1%	5%	3%	3%	0%	-0%
	Yorkshire and The Humber	-10%	-7%	-9%	-5%	-1%	3%	5%	5%	0%	2%
	East Midlands	-10%	-8%	-12%	-8%	-6%	-3%	-0%	1%	0%	0%
	West Midlands	-12%	-8%	-10%	-6%	-2%	3%	3%	2%	0%	0%
	East of England	-10%	-6%	-10%	-7%	-4%	-1%	2%	3%	0%	2%
	London	-28%	-23%	-24%	-19%	-16%	-9%	-6%	-2%	0%	5%
	South East	-14%	-13%	-14%	-12%	-10%	-5%	-2%	-1%	0%	0%
	South West	-9%	-5%	-10%	-7%	-6%	1%	0%	2%	0%	-2%
	(England total)	-13%	-10%	-13%	-9%	-6%	-1%	0%	1%	0%	1%
	Scotland	1%	-4%	-4%	-3%	-2%	-1%	0%	0%	0%	-4%
	Northern Ireland	9%	6%	1%	8%	5%	4%	7%	5%	0%	-2%
	Wales	-3%	-7%	-4%	-5%	-1%	4%	5%	2%	0%	-2%
	UK	-11%	-9%	-11%	-8%	-5%	-1%	1%	2%	0%	1%

Note: The percentage change is not recorded in the above table for groups with fewer than 10 placed applicants in that cycle or in the 2018 cycle.

## R.8 Placed 18 year old applicants by region of domicile: 12 days after A level results day

Placed 18 year old applicants: absolute change relative to 2018 cycle totals

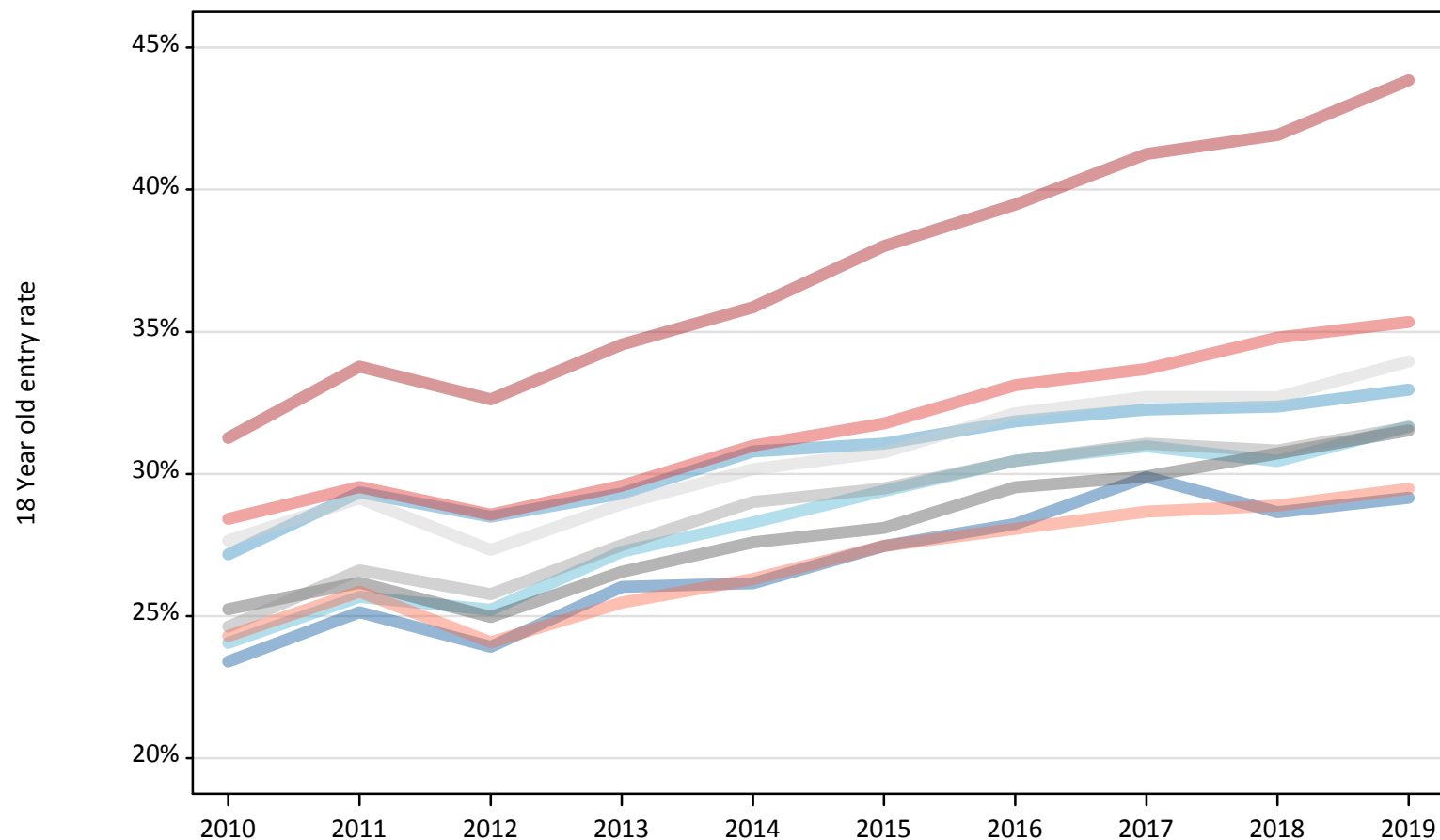
Applicant Status	Domicile	2010	2011	2012	2013	2014	2015	2016	2017	2018	2019
Placed	North East	-50	70	-490	10	-120	410	370	590	0	-120
	North West	-320	400	-830	-660	180	1,180	700	730	0	-60
	Yorkshire and The Humber	-1,860	-1,280	-1,710	-980	-140	580	860	960	0	290
	East Midlands	-1,590	-1,350	-1,860	-1,230	-980	-480	-30	240	0	30
	West Midlands	-2,410	-1,740	-2,070	-1,200	-410	520	670	500	0	70
	East of England	-2,310	-1,440	-2,260	-1,460	-890	-140	470	600	0	550
	London	-10,860	-8,780	-9,450	-7,460	-6,130	-3,440	-2,350	-780	0	1,820
	South East	-5,030	-4,480	-4,960	-4,340	-3,470	-1,750	-590	-190	0	20
	South West	-1,590	-780	-1,760	-1,270	-950	240	80	370	0	-270
	(England total)	-26,020	-19,380	-25,380	-18,570	-12,900	-2,890	170	3,020	0	2,330
	Scotland	80	-640	-530	-450	-290	-200	50	60	0	-550
	Northern Ireland	750	510	120	610	420	310	530	410	0	-180
	Wales	-350	-700	-410	-480	-90	380	500	160	0	-230
	UK	-25,530	-20,200	-26,200	-18,900	-12,860	-2,400	1,260	3,640	0	1,370



## R.9 Placed 18 year old applicants by region of domicile: 12 days after A level results day

Placed 18 year old applicants: entry rate

- North East
- North West
- Yorkshire and The Humber
- East Midlands
- West Midlands
- East of England
- London
- South East
- South West



## R.10 Placed 18 year old applicants by region of domicile: 12 days after A level results day

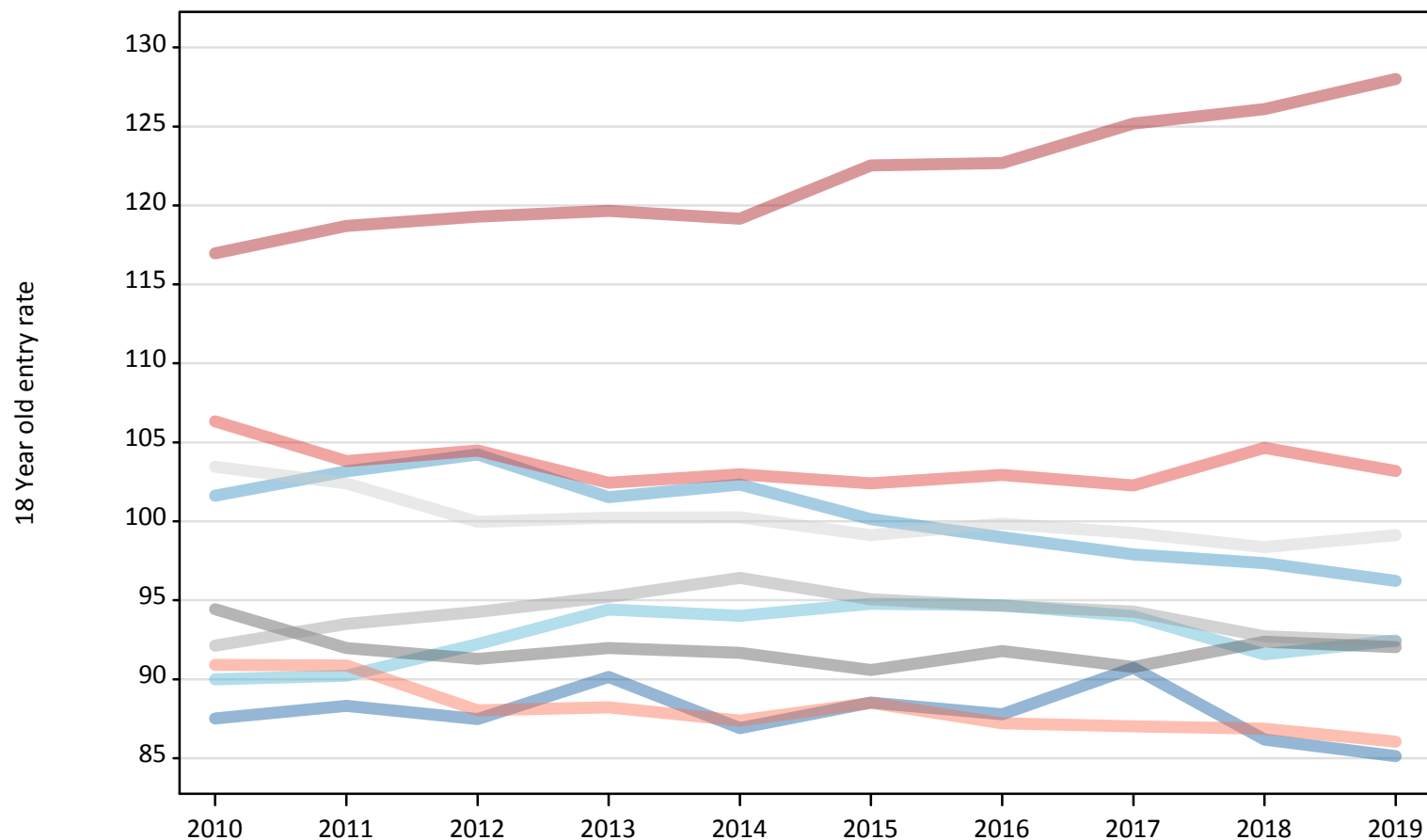
### Placed 18 year old applicants: entry rate

Applicant Status	Domicile	2010	2011	2012	2013	2014	2015	2016	2017	2018	2019
Placed	North East	23.4%	25.1%	23.9%	26.0%	26.2%	27.5%	28.2%	29.9%	28.7%	29.2%
	North West	27.2%	29.4%	28.5%	29.3%	30.8%	31.1%	31.9%	32.3%	32.4%	33.0%
	Yorkshire and The Humber	24.1%	25.7%	25.2%	27.3%	28.3%	29.4%	30.5%	31.0%	30.4%	31.7%
	East Midlands	25.2%	26.2%	25.0%	26.6%	27.6%	28.1%	29.5%	29.9%	30.7%	31.5%
	West Midlands	24.6%	26.6%	25.8%	27.5%	29.0%	29.5%	30.5%	31.1%	30.8%	31.6%
	East of England	27.7%	29.1%	27.3%	28.9%	30.2%	30.8%	32.1%	32.7%	32.7%	34.0%
	London	31.3%	33.8%	32.6%	34.5%	35.9%	38.0%	39.5%	41.2%	41.9%	43.9%
	South East	28.4%	29.5%	28.6%	29.6%	31.0%	31.8%	33.1%	33.7%	34.8%	35.3%
	South West	24.3%	25.9%	24.1%	25.5%	26.3%	27.5%	28.1%	28.7%	28.9%	29.5%
	(England total)	26.7%	28.5%	27.3%	28.9%	30.1%	31.0%	32.2%	32.9%	33.2%	34.3%
	Scotland	23.0%	22.2%	22.7%	23.0%	23.3%	23.9%	24.9%	25.5%	26.3%	26.1%
	Northern Ireland	34.5%	34.3%	32.5%	35.4%	34.9%	33.7%	35.2%	35.0%	34.8%	35.2%
	Wales	24.4%	24.3%	25.1%	25.4%	26.6%	27.8%	29.1%	28.8%	29.3%	29.3%
	UK	26.6%	27.9%	27.0%	28.4%	29.5%	30.4%	31.6%	32.2%	32.6%	33.4%

### R.11 Placed 18 year old applicants by region of domicile: 12 days after A level results day

Placed 18 year old applicants: entry rates (indexed to 100 = England)

- North East
- North West
- Yorkshire and The Humber
- East Midlands
- West Midlands
- East of England
- London
- South East
- South West



## R.12 Placed 18 year old applicants by region of domicile: 12 days after A level results day

Placed 18 year old applicants: entry rate (indexed to 100 = England)

Applicant Status	Domicile	2010	2011	2012	2013	2014	2015	2016	2017	2018	2019
Placed	North East	88	88	87	90	87	89	88	91	86	85
	North West	102	103	104	102	102	100	99	98	97	96
	Yorkshire and The Humber	90	90	92	94	94	95	95	94	92	92
	East Midlands	94	92	91	92	92	91	92	91	92	92
	West Midlands	92	94	94	95	96	95	95	94	93	92
	East of England	103	102	100	100	100	99	100	99	98	99
	London	117	119	119	120	119	123	123	125	126	128
	South East	106	104	104	102	103	102	103	102	105	103
	South West	91	91	88	88	87	89	87	87	87	86
	(England total)	100	100	100	100	100	100	100	100	100	100