

B7 Nursing analysis at 00:05 on Tuesday 27 August 2019 (12 days after A level results day)

CB.1 Placed applicants to nursing by country of domicile and age group, 2019 cycle (12 days after A level results day)

Domicile of applicant	Age group				
	17 and under	18	19	20 to 24	25 and over
England	0	4,940	2,270	4,080	7,640
Northern Ireland	0	330	180	250	280
Scotland	20	680	350	760	1,580
Wales	0	340	230	400	690
UK	30	6,290	3,030	5,480	10,180

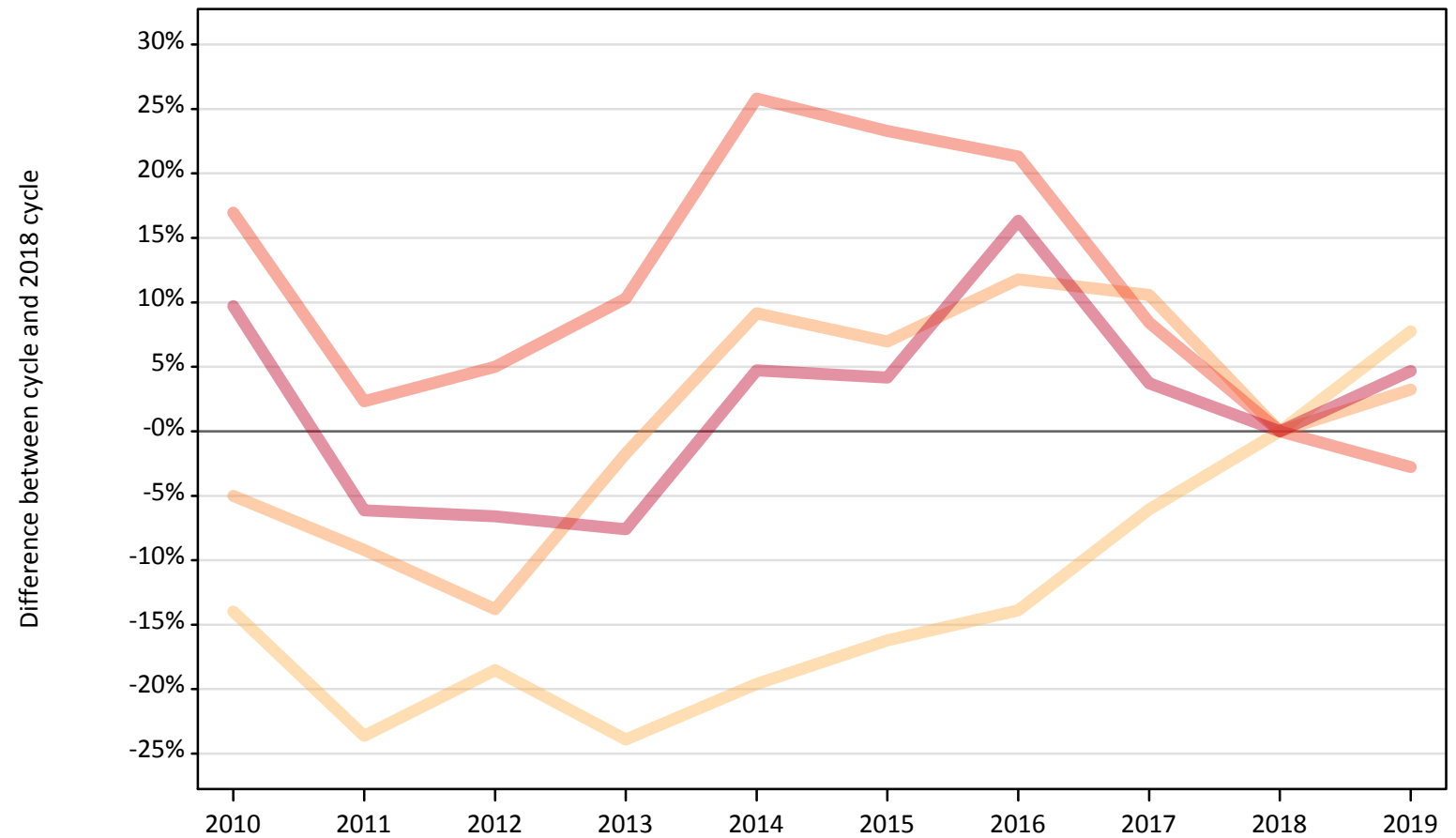
CB.2 Proportion of 18 year old population placed to nursing by country of domicile, 2019 cycle (12 days after A level results day)

Domicile of applicant	Age group	2019
England	18	0.8%
Northern Ireland	18	1.5%
Scotland	18	1.3%
Wales	18	1.0%

CB.3 Placed applicants to nursing from England by age group at 12 days after A level results day

Selected age groups: difference between cycle and 2018 cycle

- 17 and under
- 18
- 19
- 20 to 24
- 25 and over



Note: The percentage change is not plotted in the above chart for groups with fewer than 30 placed applicants in any one cycle.

CB.4 Placed applicants to nursing from England by age group at 12 days after A level results day

All age groups

Domicile of applicant	Age group	2010	2011	2012	2013	2014	2015	2016	2017	2018	2019
England	17 and under	80	30	0	0	10	0	0	10	10	0
	18	3,940	3,500	3,730	3,490	3,690	3,840	3,950	4,310	4,580	4,940
	19	2,090	1,990	1,890	2,160	2,400	2,350	2,460	2,430	2,200	2,270
	20 to 24	4,900	4,290	4,400	4,630	5,280	5,170	5,090	4,550	4,190	4,080
	25 and over	8,010	6,850	6,820	6,740	7,640	7,600	8,490	7,570	7,300	7,640

CB.5 Placed applicants to nursing from England by age group at 12 days after A level results day

Selected age groups: difference between cycle and 2018 cycle

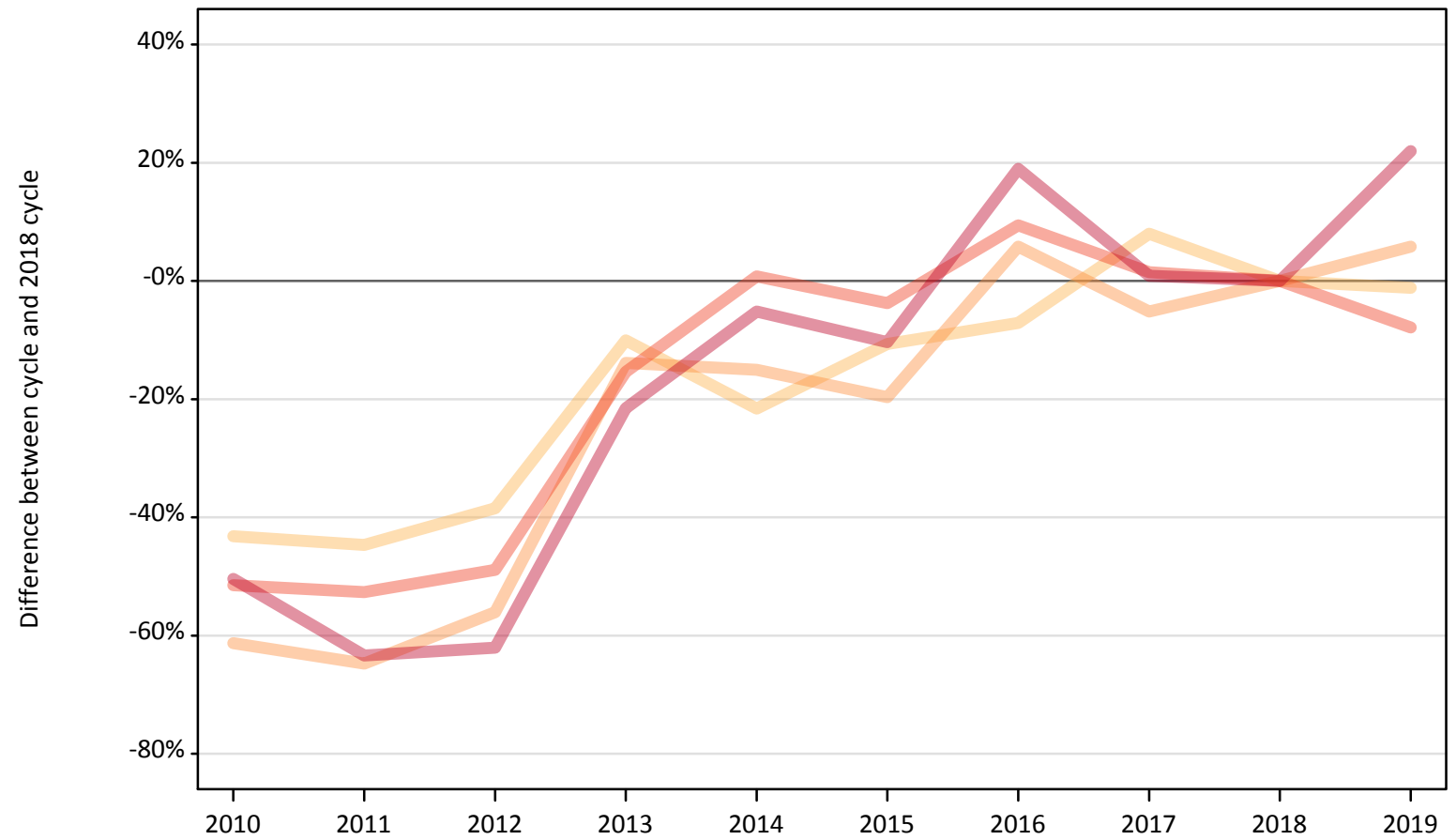
Domicile of applicant	Age group	2010	2011	2012	2013	2014	2015	2016	2017	2018	2019
England	17 and under										
	18	-14%	-24%	-19%	-24%	-20%	-16%	-14%	-6%	0%	8%
	19	-5%	-9%	-14%	-2%	9%	7%	12%	11%	0%	3%
	20 to 24	17%	2%	5%	10%	26%	23%	21%	8%	0%	-3%
	25 and over	10%	-6%	-7%	-8%	5%	4%	16%	4%	0%	5%

Note: The percentage change is not recorded in the above table for groups with fewer than 10 placed applicants in that cycle or in the 2018 cycle.

CB.6 Placed applicants to nursing from Northern Ireland by age group at 12 days after A level results day

Selected age groups: difference between cycle and 2018 cycle

- 17 and under
- 18
- 19
- 20 to 24
- 25 and over



Note: The percentage change is not plotted in the above chart for groups with fewer than 30 placed applicants in any one cycle.

CB.7 Placed applicants to nursing from Northern Ireland by age group at 12 days after A level results day

All age groups

Domicile of applicant	Age group	2010	2011	2012	2013	2014	2015	2016	2017	2018	2019
Northern Ireland	17 and under	0	0	0	0	0	0	0	0	0	0
	18	190	190	210	300	270	300	310	370	340	330
	19	70	60	80	150	150	140	180	160	170	180
	20 to 24	130	130	140	230	270	260	290	270	270	250
	25 and over	120	90	90	180	220	210	280	230	230	280

CB.8 Placed applicants to nursing from Northern Ireland by age group at 12 days after A level results day

Selected age groups: difference between cycle and 2018 cycle

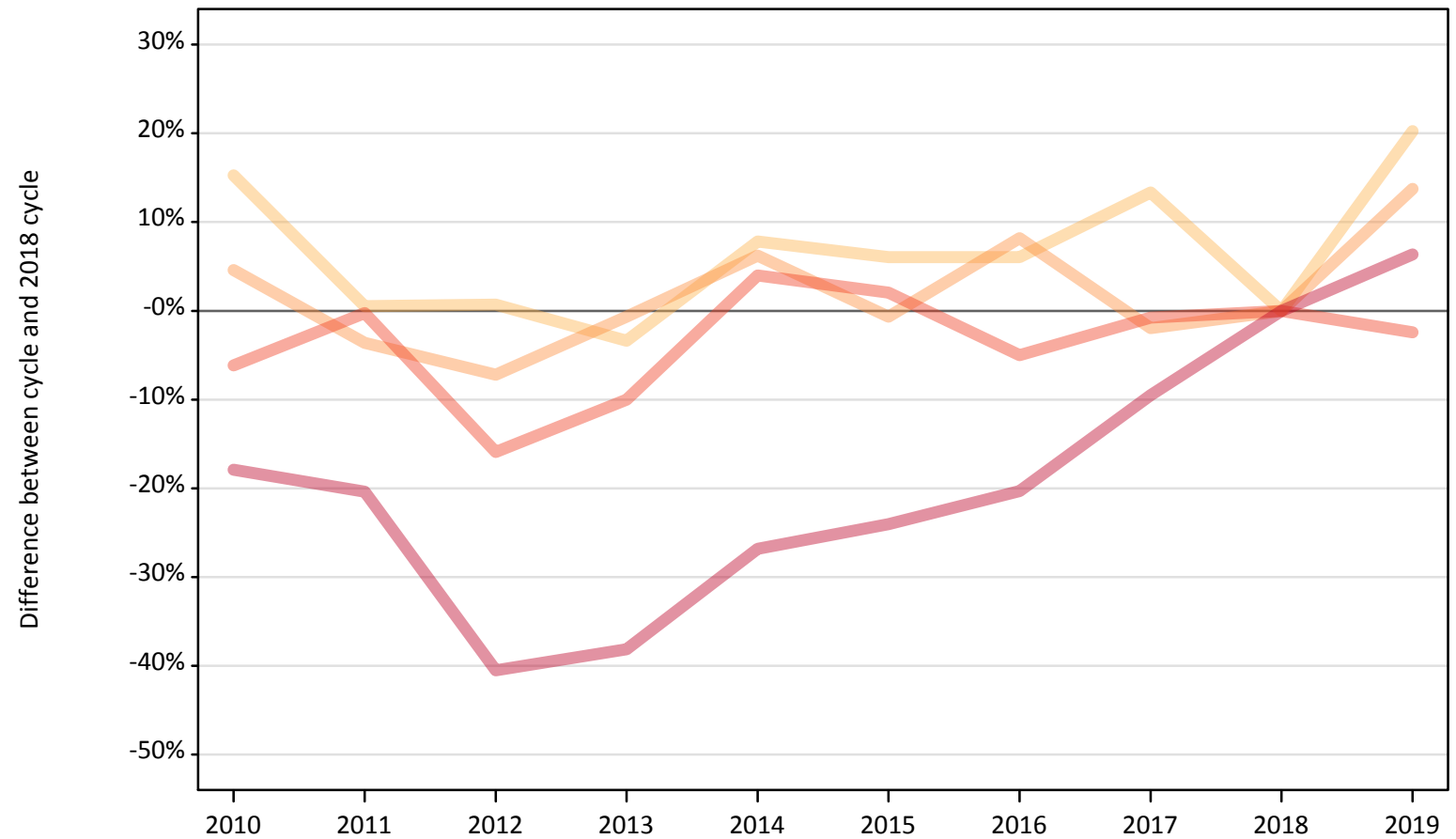
Domicile of applicant	Age group	2010	2011	2012	2013	2014	2015	2016	2017	2018	2019
Northern Ireland	17 and under										
	18	-43%	-45%	-38%	-10%	-22%	-11%	-7%	8%	0%	-1%
	19	-61%	-65%	-56%	-14%	-15%	-20%	6%	-5%	0%	6%
	20 to 24	-52%	-53%	-49%	-15%	1%	-4%	9%	2%	0%	-8%
	25 and over	-50%	-63%	-62%	-22%	-5%	-10%	19%	1%	0%	22%

Note: The percentage change is not recorded in the above table for groups with fewer than 10 placed applicants in that cycle or in the 2018 cycle.

CB.9 Placed applicants to nursing from Scotland by age group at 12 days after A level results day

Selected age groups: difference between cycle and 2018 cycle

- 17 and under
- 18
- 19
- 20 to 24
- 25 and over



Note: The percentage change is not plotted in the above chart for groups with fewer than 30 placed applicants in any one cycle.

CB.10 Placed applicants to nursing from Scotland by age group at 12 days after A level results day

All age groups

Domicile of applicant	Age group	2010	2011	2012	2013	2014	2015	2016	2017	2018	2019
Scotland	17 and under	40	30	30	20	20	10	20	20	20	20
	18	650	570	570	540	610	600	600	640	560	680
	19	320	300	280	300	330	300	330	300	310	350
	20 to 24	730	780	660	700	810	800	740	770	780	760
	25 and over	1,220	1,180	880	920	1,080	1,130	1,180	1,340	1,480	1,580

CB.11 Placed applicants to nursing from Scotland by age group at 12 days after A level results day

Selected age groups: difference between cycle and 2018 cycle

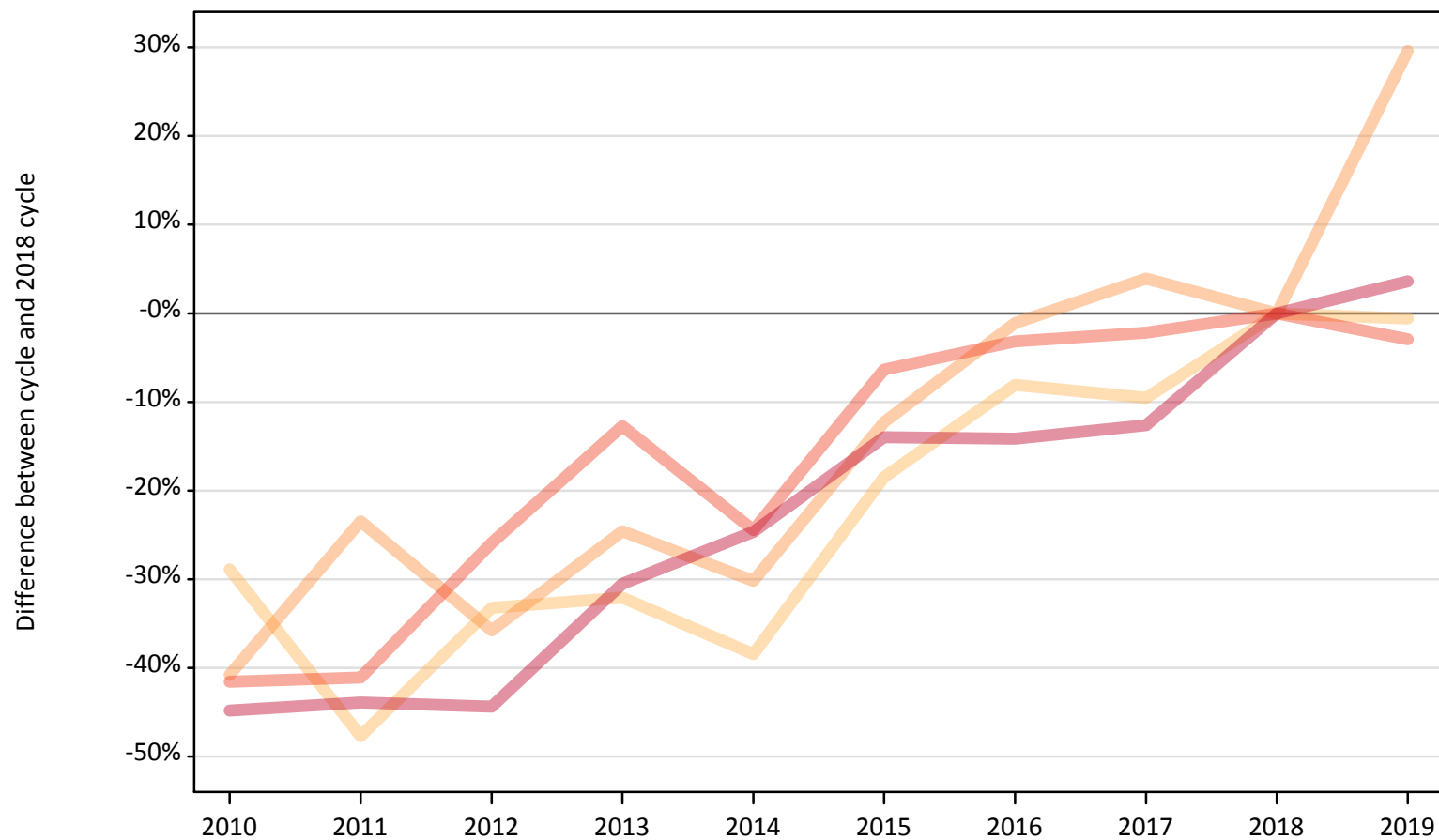
Domicile of applicant	Age group	2010	2011	2012	2013	2014	2015	2016	2017	2018	2019
Scotland	17 and under	169%	56%	56%	38%	6%	-19%	0%	38%	0%	44%
	18	15%	1%	1%	-3%	8%	6%	6%	13%	0%	20%
	19	5%	-4%	-7%	-1%	6%	-1%	8%	-2%	0%	14%
	20 to 24	-6%	-0%	-16%	-10%	4%	2%	-5%	-1%	0%	-2%
	25 and over	-18%	-20%	-41%	-38%	-27%	-24%	-20%	-10%	0%	6%

Note: The percentage change is not recorded in the above table for groups with fewer than 10 placed applicants in that cycle or in the 2018 cycle.

CB.12 Placed applicants to nursing from Wales by age group at 12 days after A level results day

Selected age groups: difference between cycle and 2018 cycle

- 17 and under
- 18
- 19
- 20 to 24
- 25 and over



Note: The percentage change is not plotted in the above chart for groups with fewer than 30 placed applicants in any one cycle.

CB.13 Placed applicants to nursing from Wales by age group at 12 days after A level results day

All age groups

Domicile of applicant	Age group	2010	2011	2012	2013	2014	2015	2016	2017	2018	2019
Wales	17 and under	0	0	0	0	0	0	0	0	0	0
	18	250	180	230	240	210	280	320	310	350	340
	19	110	140	120	140	130	160	180	190	180	230
	20 to 24	240	240	300	360	310	380	400	400	410	400
	25 and over	370	370	370	460	500	570	570	580	670	690

CB.14 Placed applicants to nursing from Wales by age group at 12 days after A level results day

Selected age groups: difference between cycle and 2018 cycle

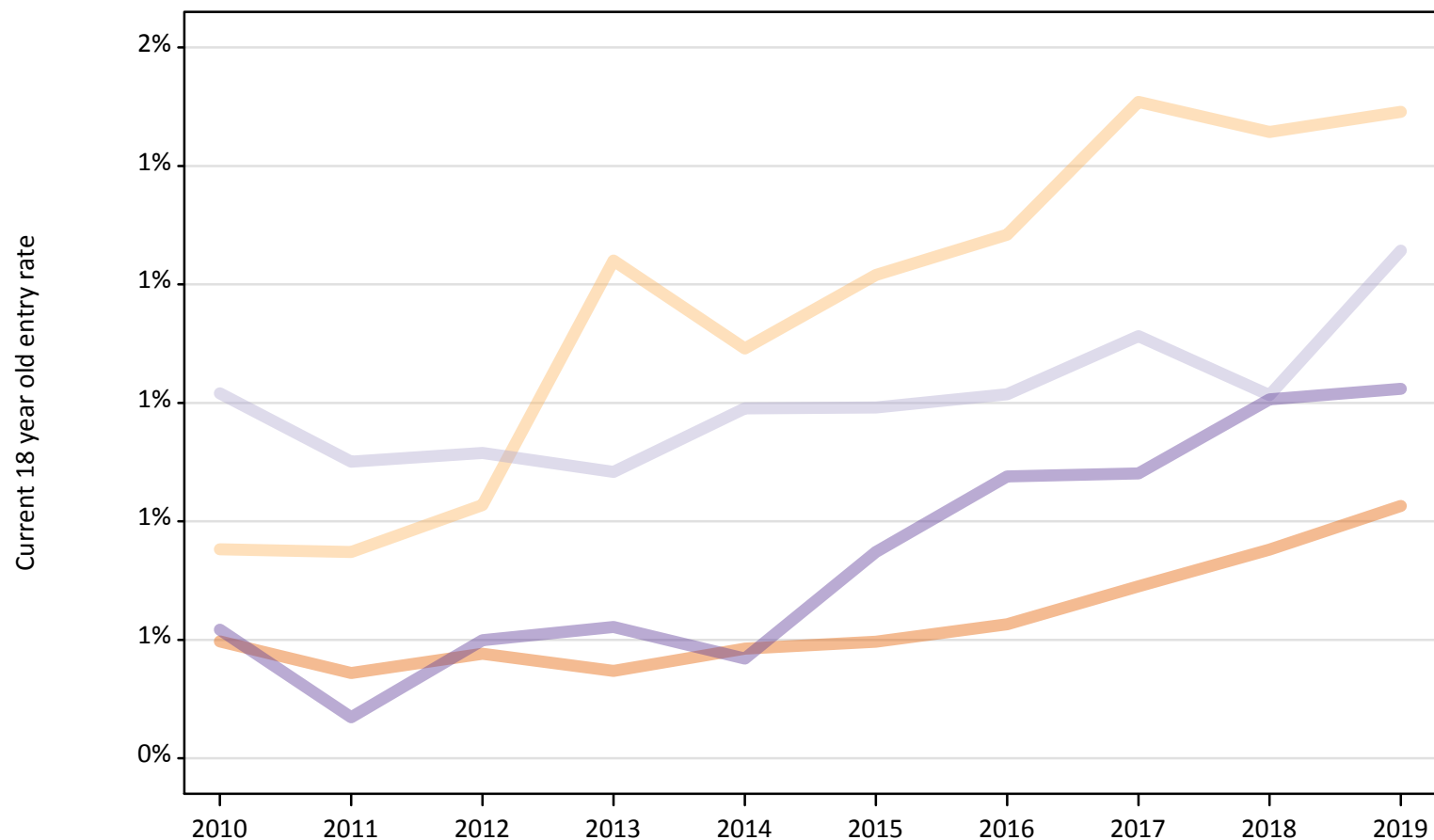
Domicile of applicant	Age group	2010	2011	2012	2013	2014	2015	2016	2017	2018	2019
Wales	17 and under										
	18	-29%	-48%	-33%	-32%	-38%	-18%	-8%	-10%	0%	-1%
	19	-41%	-23%	-36%	-25%	-30%	-12%	-1%	4%	0%	30%
	20 to 24	-42%	-41%	-26%	-13%	-24%	-6%	-3%	-2%	0%	-3%
	25 and over	-45%	-44%	-44%	-31%	-25%	-14%	-14%	-13%	0%	4%

Note: The percentage change is not recorded in the above table for groups with fewer than 10 placed applicants in that cycle or in the 2018 cycle.

CB.15 Entry rates to nursing for 18 year olds by UK country of domicile: 12 days after A level results day

Placed 18 year old applicants as a proportion of the 18 year old population

- England
- Northern Ireland
- Scotland
- Wales



CB.16 Entry rates to nursing for 18 year olds by UK country of domicile: 12 days after A level results day

Placed 18 year old applicants as a proportion of the 18 year old population

Domicile of applicant	Age group	2010	2011	2012	2013	2014	2015	2016	2017	2018	2019
England	18	0.6%	0.5%	0.6%	0.5%	0.6%	0.6%	0.6%	0.7%	0.8%	0.8%
Northern Ireland	18	0.8%	0.7%	0.8%	1.2%	1.1%	1.2%	1.3%	1.5%	1.5%	1.5%
Scotland	18	1.0%	0.9%	0.9%	0.9%	1.0%	1.0%	1.0%	1.1%	1.0%	1.3%
Wales	18	0.6%	0.5%	0.6%	0.6%	0.6%	0.7%	0.9%	0.9%	1.0%	1.0%