

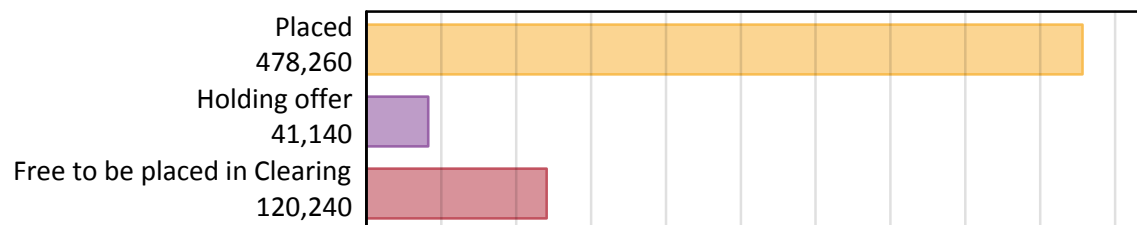
# Daily Clearing Analysis: Overview

Analysis at 00:05 on Wednesday 28 August 2019 (13 days after A level results day)

## A.1 Applicants by type and status from all domiciles, 2019 cycle

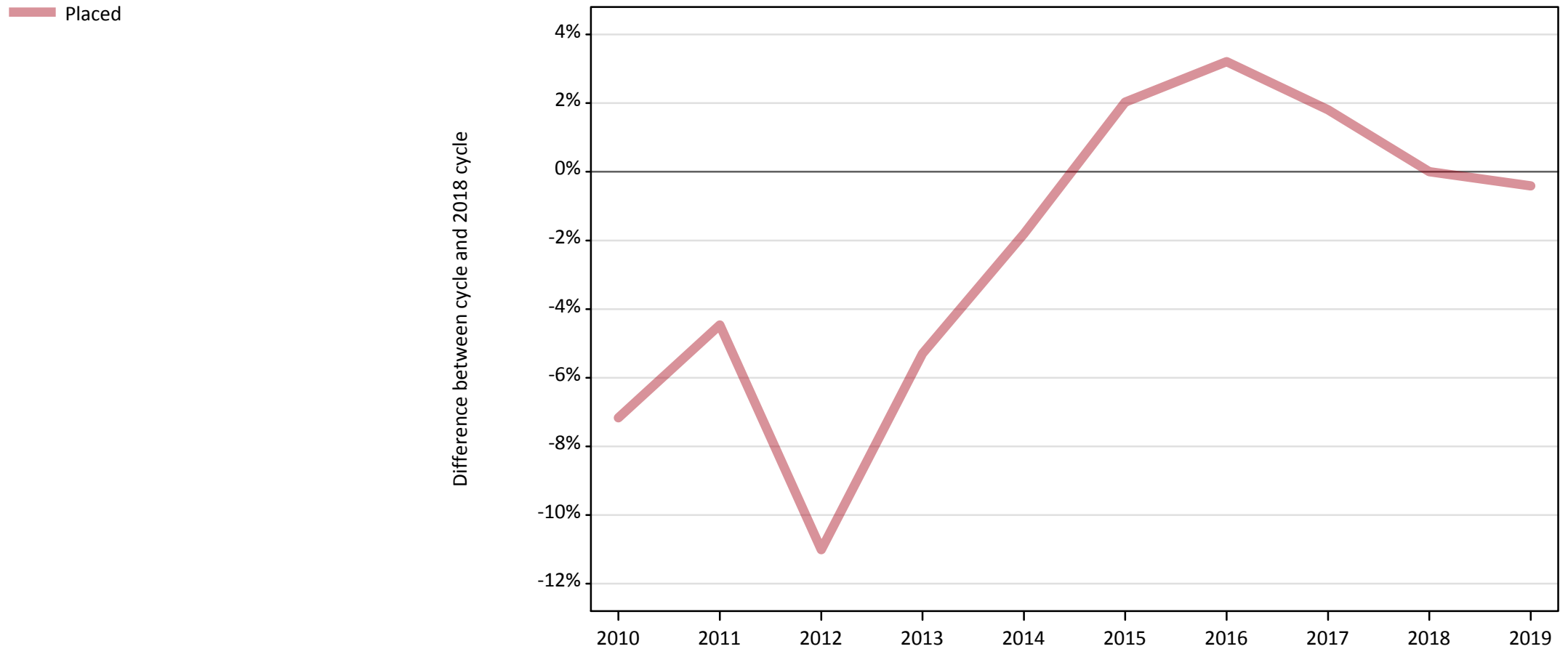
Applicant type	Status	2019
Main scheme	Placed (Clearing)	44,800
	Placed (Adjustment)	600
	Placed (Firm)	374,800
	Placed (Insurance)	33,470
	Placed (Other)	13,710
	Holding offer	41,140
	Free to be placed in Clearing	120,240
Direct to Clearing	Placed (Direct to Clearing)	10,870
	Other (Direct to Clearing)	8,730
All applicants	Placed	478,260

## A.2 Summary of applicants who are placed, holding offers or free to be placed in Clearing ( all domiciles )



### A.3 All placed applicants from all domiciles: 13 days after A level results day

All placed applicants: difference between cycle and 2018 cycle



Note: The percentage change is not plotted in the above chart for groups with fewer than 30 placed applicants in any one cycle.

#### A.4 All placed applicants from all domiciles: 13 days after A level results day

All placed applicants: applicants at 13 days after A level results day

Applicant type	Status	2010	2011	2012	2013	2014	2015	2016	2017	2018	2019
All applicants	Placed	445,800	458,780	427,330	454,790	471,530	489,960	495,610	488,900	480,220	478,260

#### A.5 All placed applicants from all domiciles: 13 days after A level results day

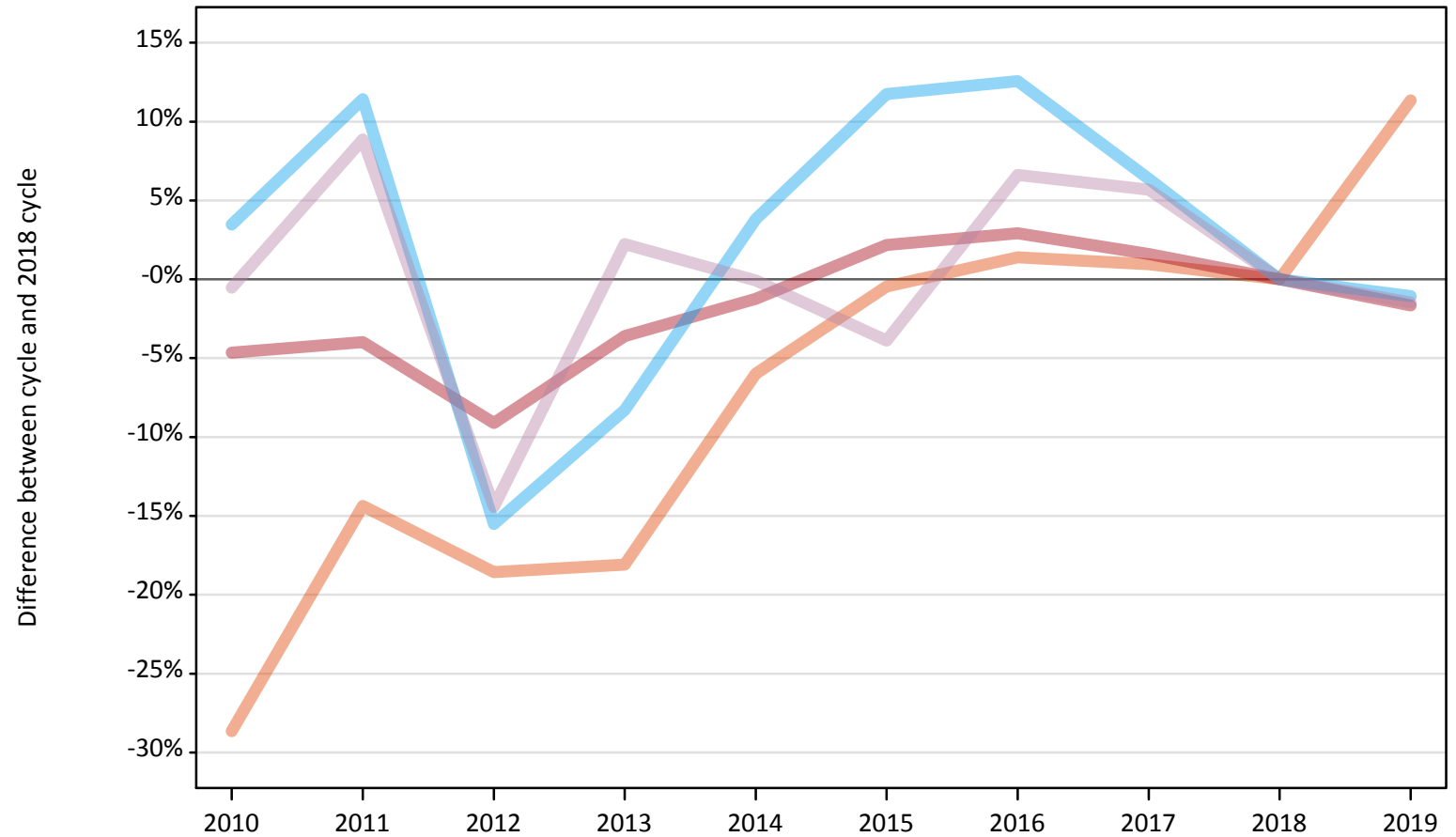
All placed applicants: difference between cycle and 2018 cycle

Applicant type	Status	2010	2011	2012	2013	2014	2015	2016	2017	2018	2019
All applicants	Placed	-7%	-4%	-11%	-5%	-2%	2%	3%	2%	0%	-0%

Note: The percentage change is not recorded in the above table for groups with fewer than 10 placed applicants in that cycle or in the 2018 cycle.

**A.6 Placed main scheme applicants from all domiciles: 13 days after A level results day**  
All Main scheme placed routes (excluding Adjustment): difference between cycle and 2018 cycle

- Placed (Clearing)
- Placed (Firm)
- Placed (Insurance)
- Placed (Other)



Note: The percentage change is not plotted in the above chart for groups with fewer than 30 placed applicants in any one cycle.

### A.7 Placed main scheme applicants from all domiciles: 13 days after A level results day

All Main scheme placed routes (excluding Adjustment): applicants at 13 days after A level results day

Applicant type	Status	2010	2011	2012	2013	2014	2015	2016	2017	2018	2019
Main scheme	Placed (Clearing)	28,710	34,460	32,770	32,960	37,830	40,060	40,800	40,620	40,240	44,800
	Placed (Firm)	363,460	366,000	346,420	367,420	376,410	389,410	392,300	387,250	381,150	374,800
	Placed (Insurance)	35,010	37,690	28,580	31,030	35,120	37,800	38,080	35,980	33,830	33,470
	Placed (Other)	13,840	15,150	11,910	14,230	13,910	13,380	14,840	14,710	13,920	13,710

### A.8 Placed main scheme applicants from all domiciles: 13 days after A level results day

All Main scheme placed routes (excluding Adjustment): difference between cycle and 2018 cycle

Applicant type	Status	2010	2011	2012	2013	2014	2015	2016	2017	2018	2019
Main scheme	Placed (Clearing)	-29%	-14%	-19%	-18%	-6%	-0%	1%	1%	0%	11%
	Placed (Firm)	-5%	-4%	-9%	-4%	-1%	2%	3%	2%	0%	-2%
	Placed (Insurance)	3%	11%	-16%	-8%	4%	12%	13%	6%	0%	-1%
	Placed (Other)	-1%	9%	-14%	2%	-0%	-4%	7%	6%	0%	-1%

Note: The percentage change is not recorded in the above table for groups with fewer than 10 placed applicants in that cycle or in the 2018 cycle.

### A.9 Main scheme applicants placed through adjustment: 13 days after A level results day

Placed through adjustment: difference between cycle and 2018 cycle

Placed (Adjustment)



Note: The percentage change is not plotted in the above chart for groups with fewer than 30 placed applicants in any one cycle.

### A.10 Main scheme applicants placed through adjustment: 13 days after A level results day

Placed through adjustment: applicants at 13 days after A level results day

Applicant type	Status	2010	2011	2012	2013	2014	2015	2016	2017	2018	2019
Main scheme	Placed (Adjustment)	380	560	1,360	1,240	1,190	1,160	920	1,060	910	600

### A.11 Main scheme applicants placed through adjustment: 13 days after A level results day

Placed through adjustment: difference between cycle and 2018 cycle

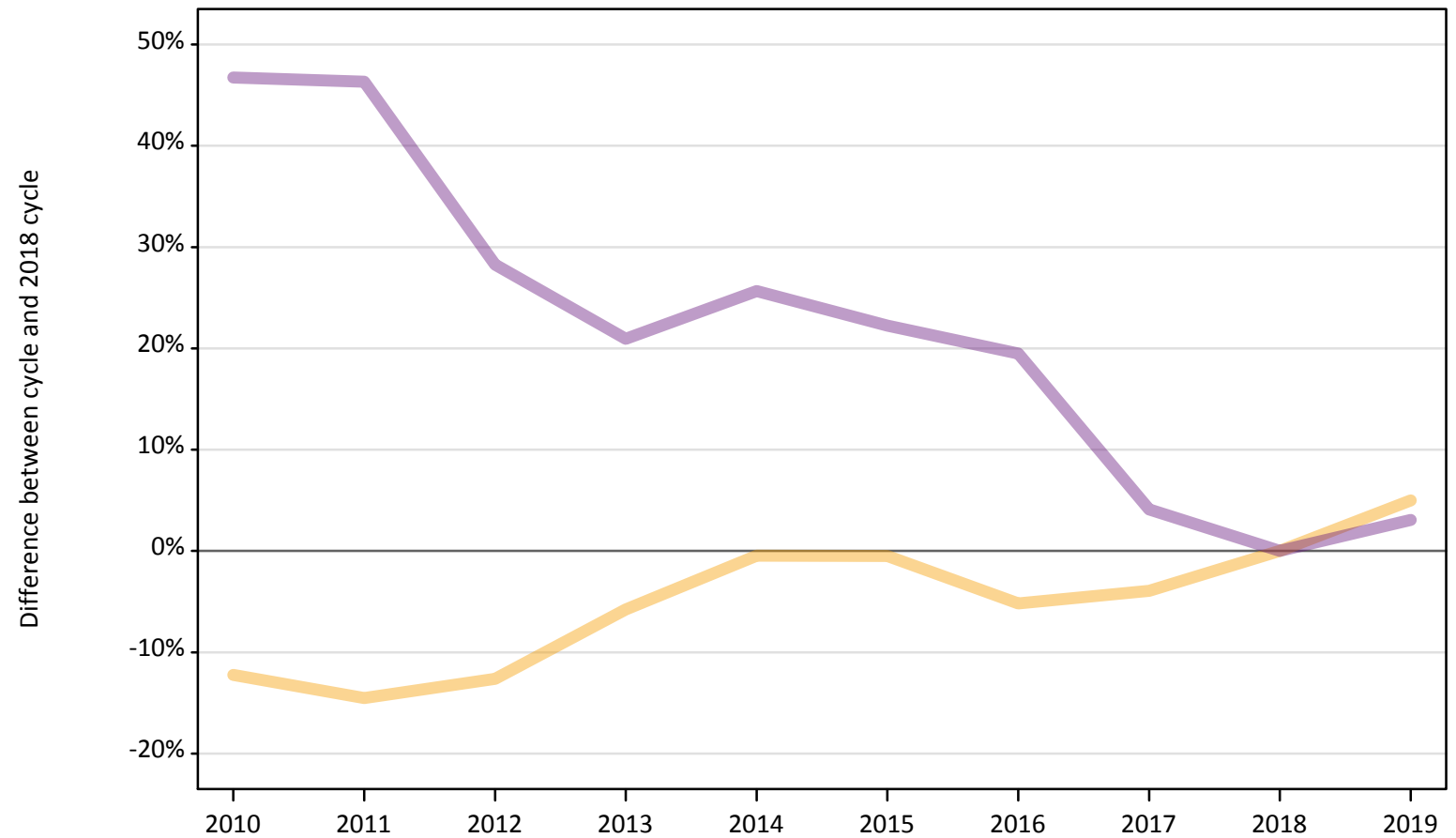
Applicant type	Status	2010	2011	2012	2013	2014	2015	2016	2017	2018	2019
Main scheme	Placed (Adjustment)	-58%	-38%	50%	36%	32%	28%	2%	17%	0%	-34%

Note: The percentage change is not recorded in the above table for groups with fewer than 10 placed applicants in that cycle or in the 2018 cycle.

## A.12 Main scheme applicants not currently placed from all domiciles: 13 days after A level results day

Applicants in unplaced states: difference between cycle and 2018 cycle

— Holding offer  
— Free to be placed in Clearing



Note: The percentage change is not plotted in the above chart for groups with fewer than 30 unplaced applicants in any one cycle.



### A.13 Main scheme applicants not currently placed from all domiciles: 13 days after A level results day

Applicants in unplaced states: applicants at 13 days after A level results day

Applicant type	Status	2010	2011	2012	2013	2014	2015	2016	2017	2018	2019
Main scheme	Holding offer	34,390	33,490	34,240	36,920	39,000	38,990	37,160	37,650	39,180	41,140
	Free to be placed in Clearing	171,220	170,710	149,660	141,110	146,590	142,620	139,400	121,440	116,670	120,240

### A.14 Main scheme applicants not currently placed from all domiciles: 13 days after A level results day

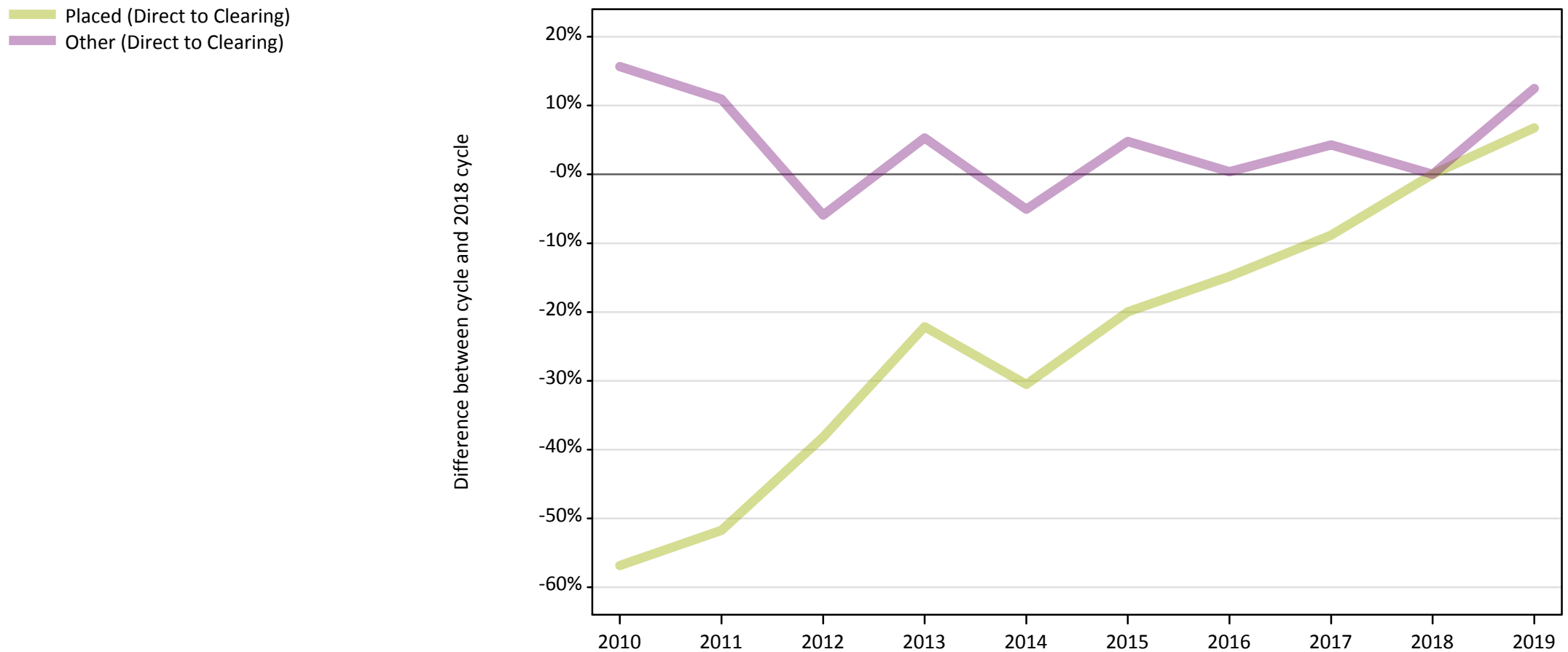
Applicants in unplaced states: difference between cycle and 2018 cycle

Applicant type	Status	2010	2011	2012	2013	2014	2015	2016	2017	2018	2019
Main scheme	Holding offer	-12%	-15%	-13%	-6%	-0%	-0%	-5%	-4%	0%	5%
	Free to be placed in Clearing	47%	46%	28%	21%	26%	22%	19%	4%	0%	3%

Note: The percentage change is not recorded in the above table for groups with fewer than 10 unplaced applicants in that cycle or in the 2018 cycle.

### A.15 Direct to Clearing applicants from all domiciles: 13 days after A level results day

Direct to Clearing: difference between cycle and 2018 cycle



Note: The percentage change is not plotted in the above chart for groups with fewer than 30 placed applicants in any one cycle.

**A.16 Direct to Clearing applicants from all domiciles: 13 days after A level results day**

Direct to Clearing 13 days after A level results day

Applicant type	Status	2010	2011	2012	2013	2014	2015	2016	2017	2018	2019
Direct to Clearing	Placed (Direct to Clearing)	4,390	4,910	6,290	7,920	7,070	8,150	8,670	9,280	10,180	10,870
	Other (Direct to Clearing)	8,980	8,610	7,300	8,180	7,370	8,140	7,790	8,100	7,760	8,730

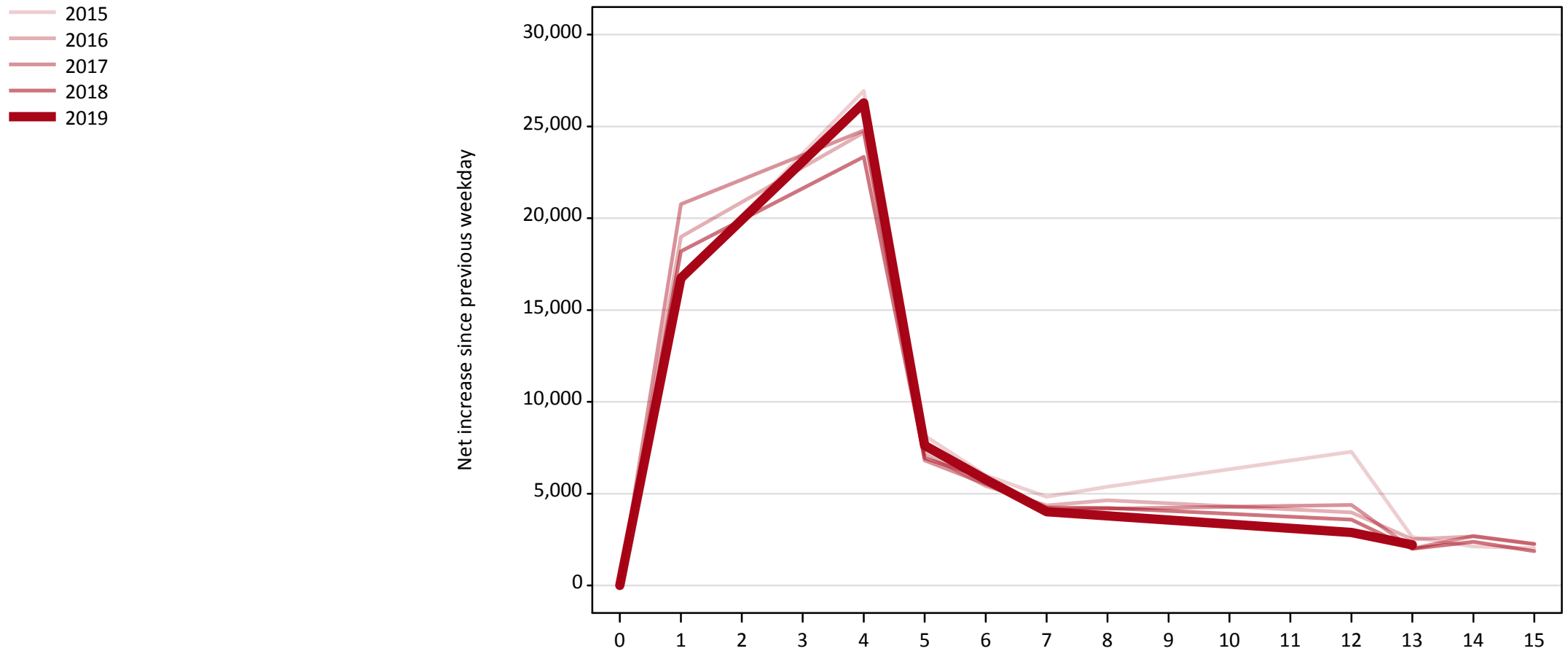
**A.17 Direct to Clearing applicants from all domiciles: 13 days after A level results day**

Direct to Clearing: difference between cycle and 2018 cycle

Applicant type	Status	2010	2011	2012	2013	2014	2015	2016	2017	2018	2019
Direct to Clearing	Placed (Direct to Clearing)	-57%	-52%	-38%	-22%	-31%	-20%	-15%	-9%	0%	7%
	Other (Direct to Clearing)	16%	11%	-6%	5%	-5%	5%	0%	4%	0%	12%

Note: The percentage change is not recorded in the above table for groups with fewer than 10 placed applicants in that cycle or in the 2018 cycle.

**A.18 All Placed: Daily net change (from all domiciles)**  
Net increase since previous weekday (2019 cycle up to 13 days after A level results day)

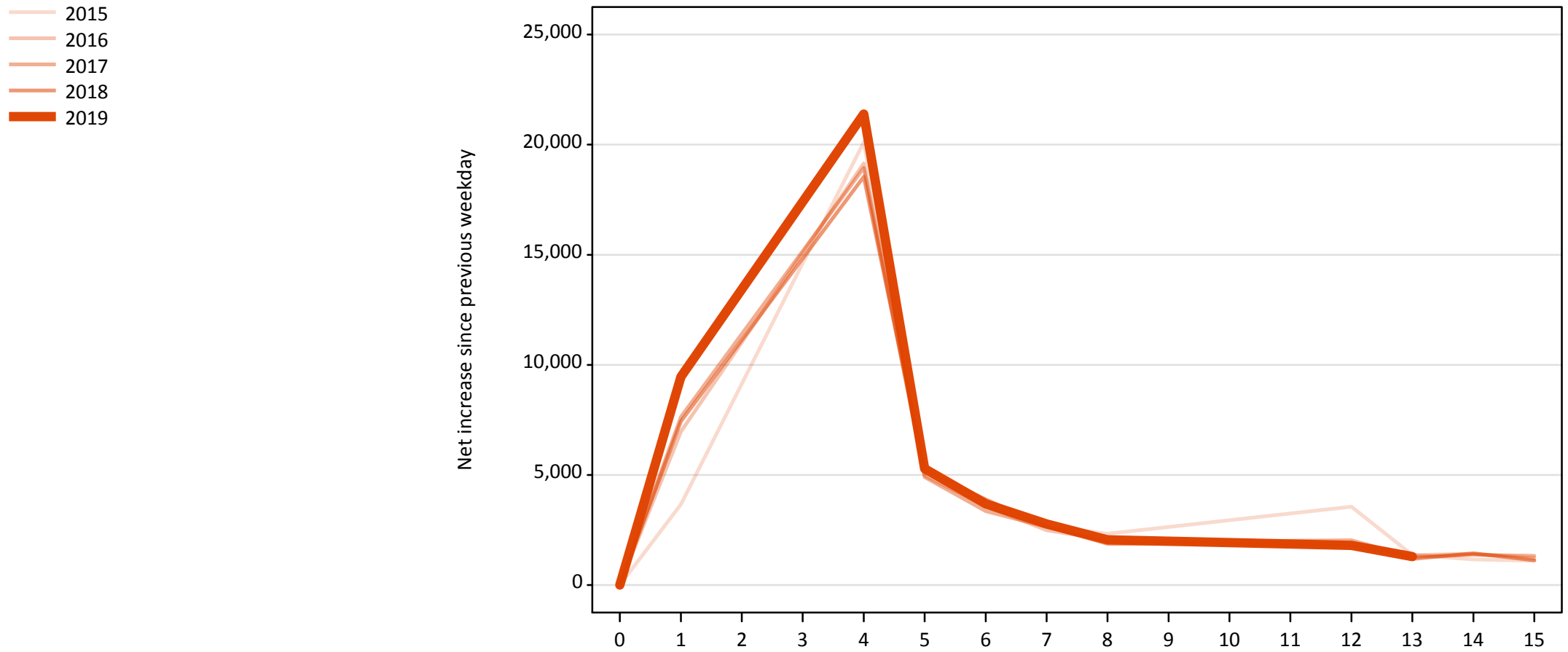


**A.19 All Placed: Daily net change (from all domiciles)**

Net increase since previous weekday (2019 cycle up to 13 days after A level results day)

Applicant status, days since A level results day		2015	2016	2017	2018	2019
All Placed	0	0	0	0	0	0
	1	16,680	18,990	20,770	18,200	16,740
	4	26,940	24,670	24,790	23,340	26,280
	5	8,160	7,170	6,810	6,940	7,620
	6	6,000	5,410	5,510	5,820	5,770
	7	4,830	4,350	4,140	4,240	4,010
	8	5,370	4,640	4,190	4,220	3,790
	12	7,280	3,980	4,380	3,590	2,880
	13	2,630	2,510	2,010	2,000	2,210
	14	2,120	2,660	2,700	2,370	
	15	2,030	2,250	2,260	1,870	

**A.20 Placed through Clearing only: Daily net change (from all domiciles)**  
Net increase since previous weekday (2019 cycle up to 13 days after A level results day)



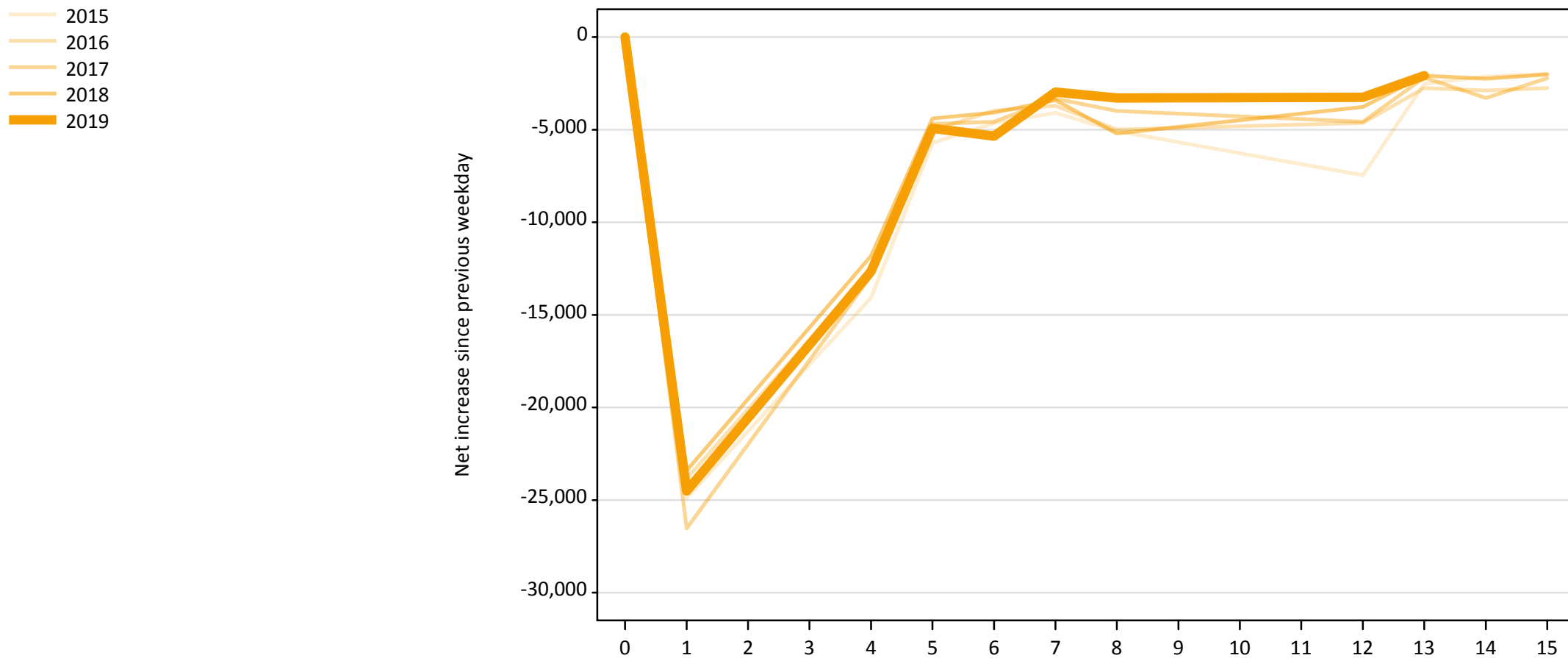
**A.21 Placed through Clearing only: Daily net change (from all domiciles)**

Net increase since previous weekday (2019 cycle up to 13 days after A level results day)

Applicant status, days since A level results day		2015	2016	2017	2018	2019
Placed through Clearing only	0	0	0	0	0	0
	1	3,660	6,970	7,640	7,440	9,460
	4	20,110	19,140	18,940	18,550	21,390
	5	5,290	4,960	4,910	5,250	5,280
	6	3,560	3,590	3,360	3,890	3,680
	7	2,680	2,480	2,640	2,660	2,770
	8	2,330	2,050	1,950	1,880	2,050
	12	3,550	1,740	2,030	1,840	1,800
	13	1,370	1,350	1,270	1,190	1,290
	14	1,160	1,420	1,370	1,440	
	15	1,100	1,210	1,320	1,130	

### A.22 Holding Offer: Daily net change (from all domiciles)

Net increase since previous weekday (2019 cycle up to 13 days after A level results day)





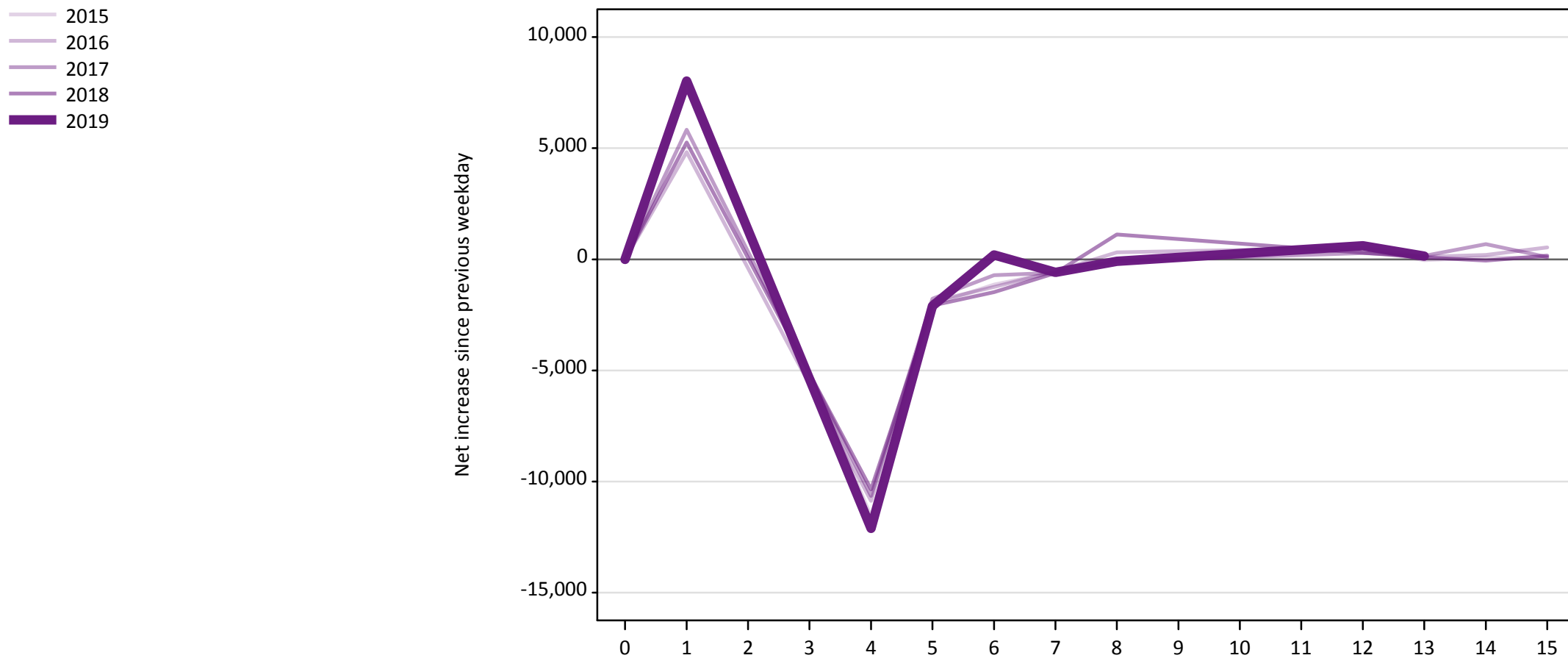
**A.23 Holding Offer: Daily net change (from all domiciles)**

Net increase since previous weekday (2019 cycle up to 13 days after A level results day)

Applicant status, days since A level results day		2015	2016	2017	2018	2019
Holding Offer	0	0	0	0	0	0
	1	-24,880	-23,840	-26,530	-23,410	-24,510
	4	-14,080	-12,600	-12,900	-11,810	-12,650
	5	-5,720	-5,030	-4,680	-4,390	-4,930
	6	-4,650	-3,970	-4,580	-4,080	-5,340
	7	-4,090	-3,700	-3,330	-3,400	-2,970
	8	-5,080	-4,990	-3,990	-5,210	-3,290
	12	-7,460	-4,640	-4,580	-3,770	-3,260
	13	-2,520	-2,760	-2,180	-2,080	-2,080
	14	-2,130	-2,880	-3,280	-2,250	
	15	-1,980	-2,760	-2,230	-2,020	

### A.24 Free to be placed in Clearing: Daily net change (from all domiciles)

Net increase since previous weekday (2019 cycle up to 13 days after A level results day)



**A.25 Free to be placed in Clearing: Daily net change (from all domiciles)**

Net increase since previous weekday (2019 cycle up to 13 days after A level results day)

Applicant status, days since A level results day		2015	2016	2017	2018	2019
Free to be placed in Clearing	0	0	0	0	0	0
	1	8,010	4,820	5,830	5,260	8,020
	4	-11,570	-10,870	-10,650	-10,350	-12,110
	5	-2,040	-1,900	-1,780	-2,080	-2,110
	6	-1,130	-1,250	-710	-1,480	200
	7	-570	-540	-610	-620	-590
	8	-80	310	-80	1,120	-90
	12	430	530	280	290	610
	13	-40	120	150	90	140
	14	80	200	680	-60	
	15	60	530	100	160	