

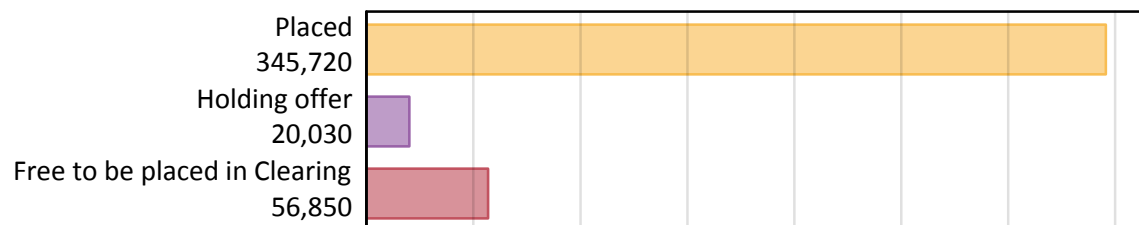
# Daily Clearing Analysis: Overview

Analysis at 00:05 on Wednesday 28 August 2019 (13 days after A level results day)

## A.1 Applicants by type and status from England, 2019 cycle

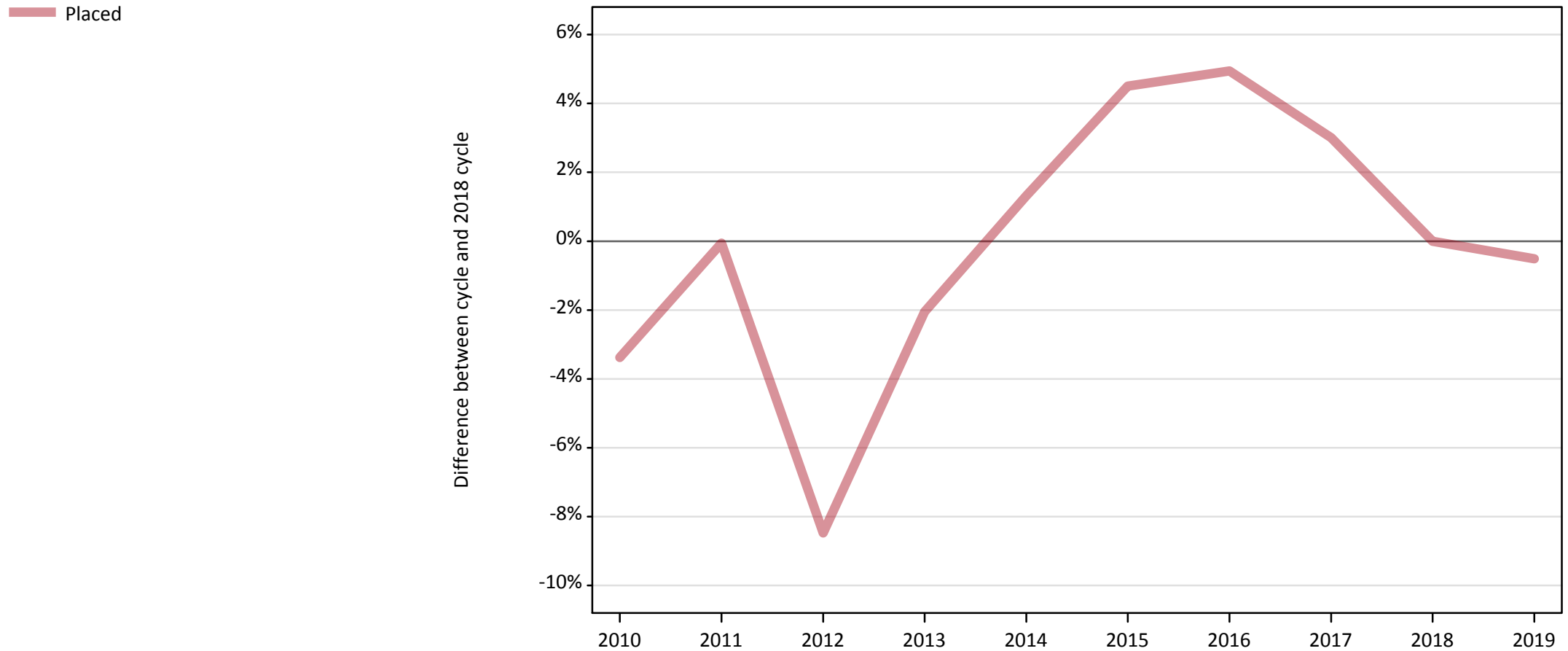
Applicant type	Status	2019
Main scheme	Placed (Clearing)	36,830
	Placed (Adjustment)	500
	Placed (Firm)	265,650
	Placed (Insurance)	24,720
	Placed (Other)	9,210
	Holding offer	20,030
	Free to be placed in Clearing	56,850
Direct to Clearing	Placed (Direct to Clearing)	8,810
	Other (Direct to Clearing)	6,640
All applicants	Placed	345,720

## A.2 Summary of applicants who are placed, holding offers or free to be placed in Clearing ( England )



### A.3 All placed applicants from England: 13 days after A level results day

All placed applicants: difference between cycle and 2018 cycle



Note: The percentage change is not plotted in the above chart for groups with fewer than 30 placed applicants in any one cycle.

#### A.4 All placed applicants from England: 13 days after A level results day

All placed applicants: applicants at 13 days after A level results day

Applicant type	Status	2010	2011	2012	2013	2014	2015	2016	2017	2018	2019
All applicants	Placed	335,760	347,290	318,030	340,360	352,080	363,150	364,680	357,940	347,500	345,720

#### A.5 All placed applicants from England: 13 days after A level results day

All placed applicants: difference between cycle and 2018 cycle

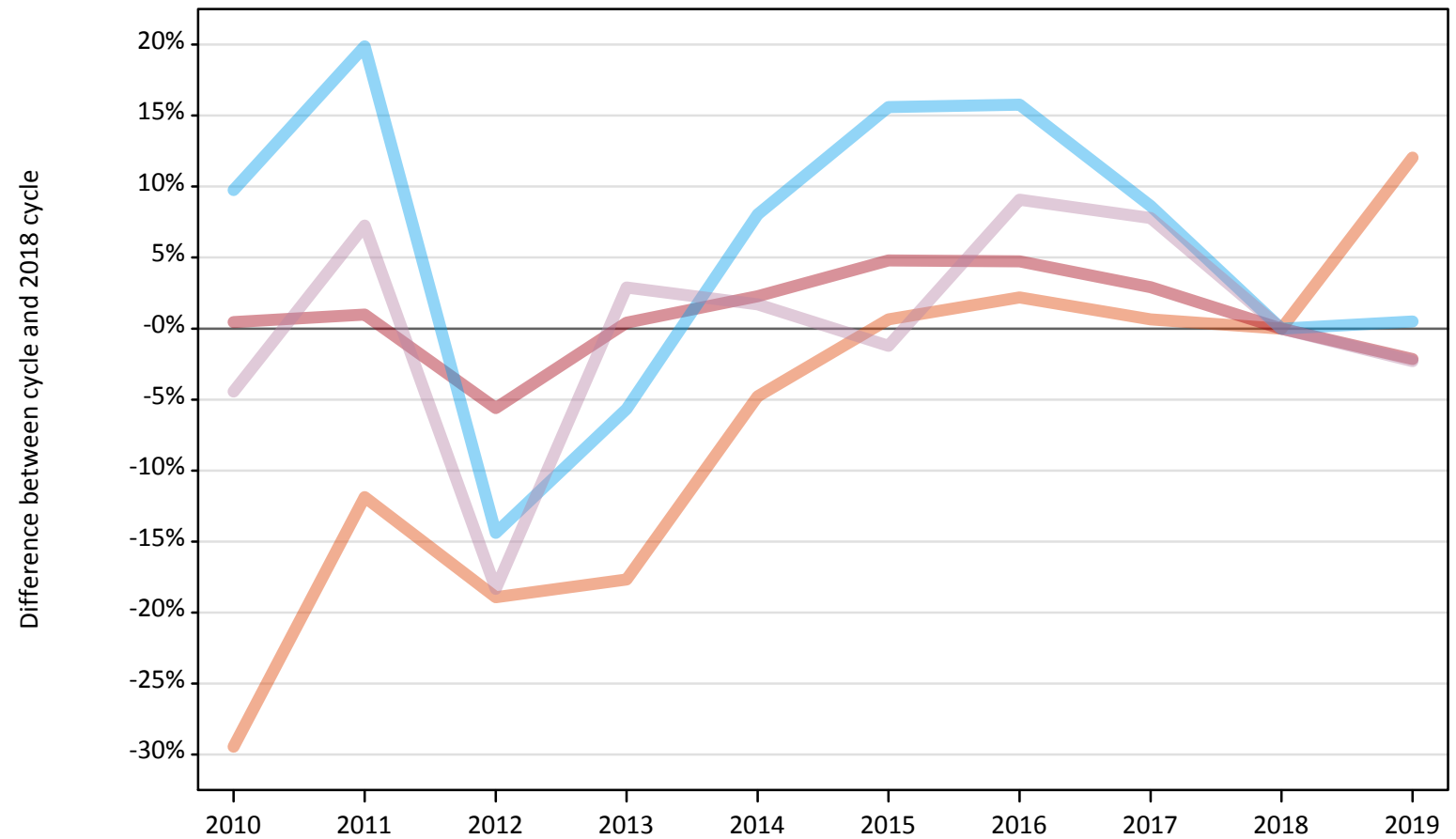
Applicant type	Status	2010	2011	2012	2013	2014	2015	2016	2017	2018	2019
All applicants	Placed	-3%	-0%	-8%	-2%	1%	5%	5%	3%	0%	-1%

Note: The percentage change is not recorded in the above table for groups with fewer than 10 placed applicants in that cycle or in the 2018 cycle.

## A.6 Placed main scheme applicants from England: 13 days after A level results day

All Main scheme placed routes (excluding Adjustment): difference between cycle and 2018 cycle

- Placed (Clearing)
- Placed (Firm)
- Placed (Insurance)
- Placed (Other)



Note: The percentage change is not plotted in the above chart for groups with fewer than 30 placed applicants in any one cycle.

### A.7 Placed main scheme applicants from England: 13 days after A level results day

All Main scheme placed routes (excluding Adjustment): applicants at 13 days after A level results day

Applicant type	Status	2010	2011	2012	2013	2014	2015	2016	2017	2018	2019
Main scheme	Placed (Clearing)	23,190	28,970	26,650	27,060	31,300	33,090	33,590	33,090	32,870	36,830
	Placed (Firm)	272,750	274,160	256,290	272,610	277,670	284,540	284,360	279,430	271,490	265,650
	Placed (Insurance)	27,000	29,490	21,060	23,200	26,580	28,440	28,480	26,720	24,600	24,720
	Placed (Other)	9,010	10,120	7,700	9,700	9,590	9,320	10,290	10,170	9,430	9,210

### A.8 Placed main scheme applicants from England: 13 days after A level results day

All Main scheme placed routes (excluding Adjustment): difference between cycle and 2018 cycle

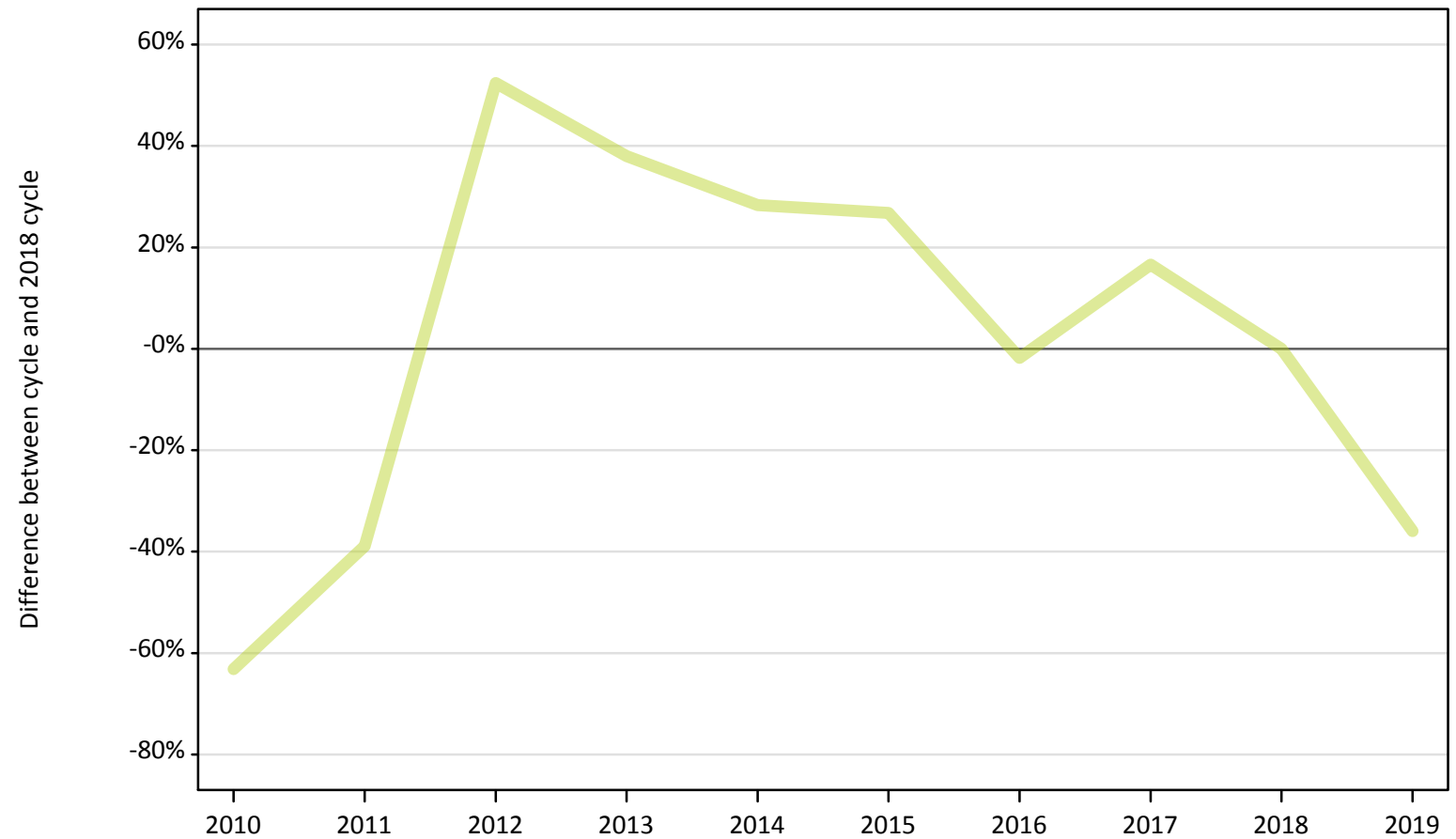
Applicant type	Status	2010	2011	2012	2013	2014	2015	2016	2017	2018	2019
Main scheme	Placed (Clearing)	-29%	-12%	-19%	-18%	-5%	1%	2%	1%	0%	12%
	Placed (Firm)	0%	1%	-6%	0%	2%	5%	5%	3%	0%	-2%
	Placed (Insurance)	10%	20%	-14%	-6%	8%	16%	16%	9%	0%	0%
	Placed (Other)	-4%	7%	-18%	3%	2%	-1%	9%	8%	0%	-2%

Note: The percentage change is not recorded in the above table for groups with fewer than 10 placed applicants in that cycle or in the 2018 cycle.

## A.9 Main scheme applicants placed through adjustment: 13 days after A level results day

Placed through adjustment: difference between cycle and 2018 cycle

Placed (Adjustment)



Note: The percentage change is not plotted in the above chart for groups with fewer than 30 placed applicants in any one cycle.

### A.10 Main scheme applicants placed through adjustment: 13 days after A level results day

Placed through adjustment: applicants at 13 days after A level results day

Applicant type	Status	2010	2011	2012	2013	2014	2015	2016	2017	2018	2019
Main scheme	Placed (Adjustment)	290	470	1,180	1,070	1,000	980	760	910	780	500

### A.11 Main scheme applicants placed through adjustment: 13 days after A level results day

Placed through adjustment: difference between cycle and 2018 cycle

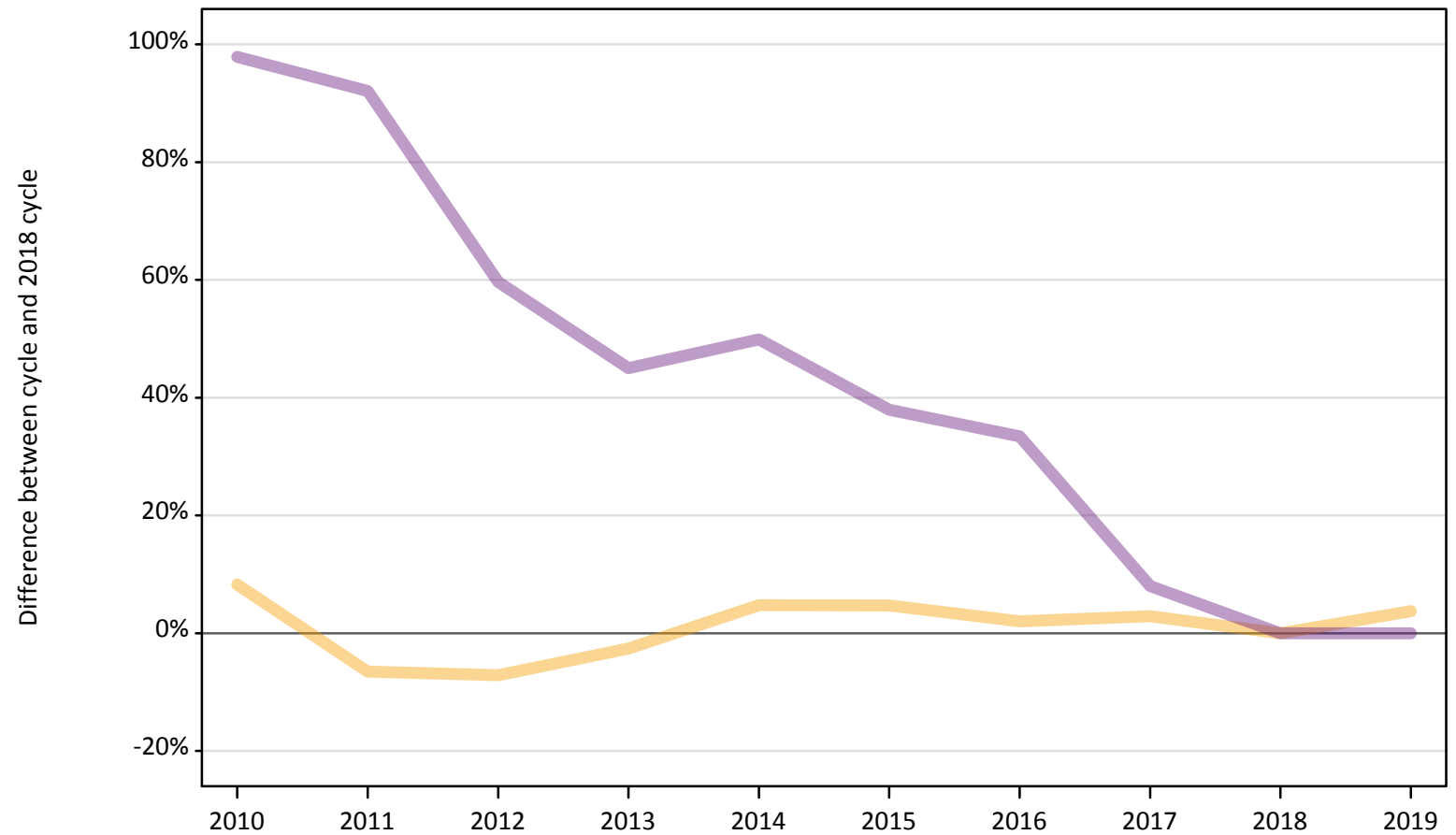
Applicant type	Status	2010	2011	2012	2013	2014	2015	2016	2017	2018	2019
Main scheme	Placed (Adjustment)	-63%	-39%	52%	38%	28%	27%	-2%	17%	0%	-36%

Note: The percentage change is not recorded in the above table for groups with fewer than 10 placed applicants in that cycle or in the 2018 cycle.

## A.12 Main scheme applicants not currently placed from England: 13 days after A level results day

Applicants in unplaced states: difference between cycle and 2018 cycle

— Holding offer  
— Free to be placed in Clearing



Note: The percentage change is not plotted in the above chart for groups with fewer than 30 unplaced applicants in any one cycle.



### A.13 Main scheme applicants not currently placed from England: 13 days after A level results day

Applicants in unplaced states: applicants at 13 days after A level results day

Applicant type	Status	2010	2011	2012	2013	2014	2015	2016	2017	2018	2019
Main scheme	Holding offer	20,900	18,040	17,920	18,800	20,230	20,210	19,690	19,860	19,310	20,030
	Free to be placed in Clearing	112,540	109,240	90,800	82,470	85,230	78,440	75,890	61,410	56,870	56,850

### A.14 Main scheme applicants not currently placed from England: 13 days after A level results day

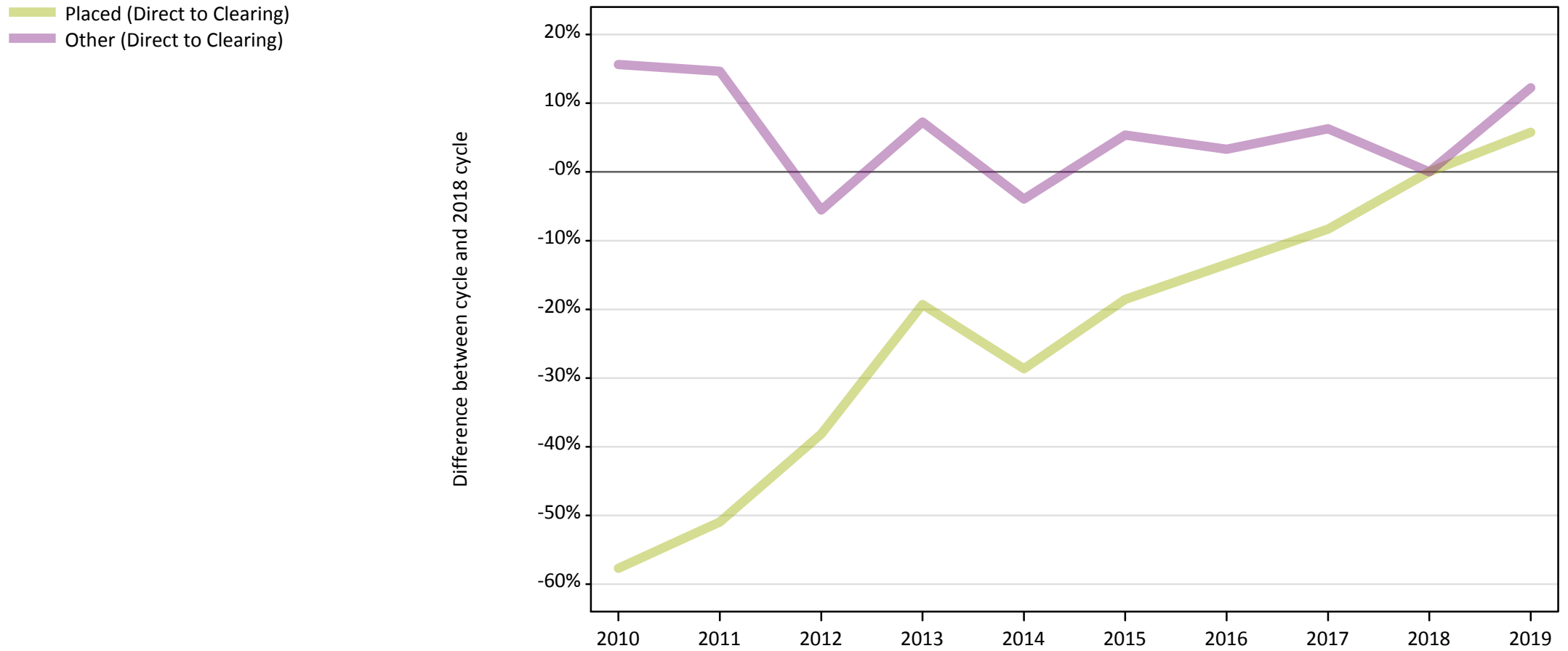
Applicants in unplaced states: difference between cycle and 2018 cycle

Applicant type	Status	2010	2011	2012	2013	2014	2015	2016	2017	2018	2019
Main scheme	Holding offer	8%	-7%	-7%	-3%	5%	5%	2%	3%	0%	4%
	Free to be placed in Clearing	98%	92%	60%	45%	50%	38%	33%	8%	0%	-0%

Note: The percentage change is not recorded in the above table for groups with fewer than 10 unplaced applicants in that cycle or in the 2018 cycle.

### A.15 Direct to Clearing applicants from England: 13 days after A level results day

Direct to Clearing: difference between cycle and 2018 cycle



Note: The percentage change is not plotted in the above chart for groups with fewer than 30 placed applicants in any one cycle.

### A.16 Direct to Clearing applicants from England: 13 days after A level results day

Direct to Clearing 13 days after A level results day

Applicant type	Status	2010	2011	2012	2013	2014	2015	2016	2017	2018	2019
Direct to Clearing	Placed (Direct to Clearing)	3,520	4,080	5,150	6,720	5,940	6,780	7,210	7,630	8,330	8,810
	Other (Direct to Clearing)	6,840	6,780	5,590	6,350	5,680	6,230	6,110	6,290	5,920	6,640

### A.17 Direct to Clearing applicants from England: 13 days after A level results day

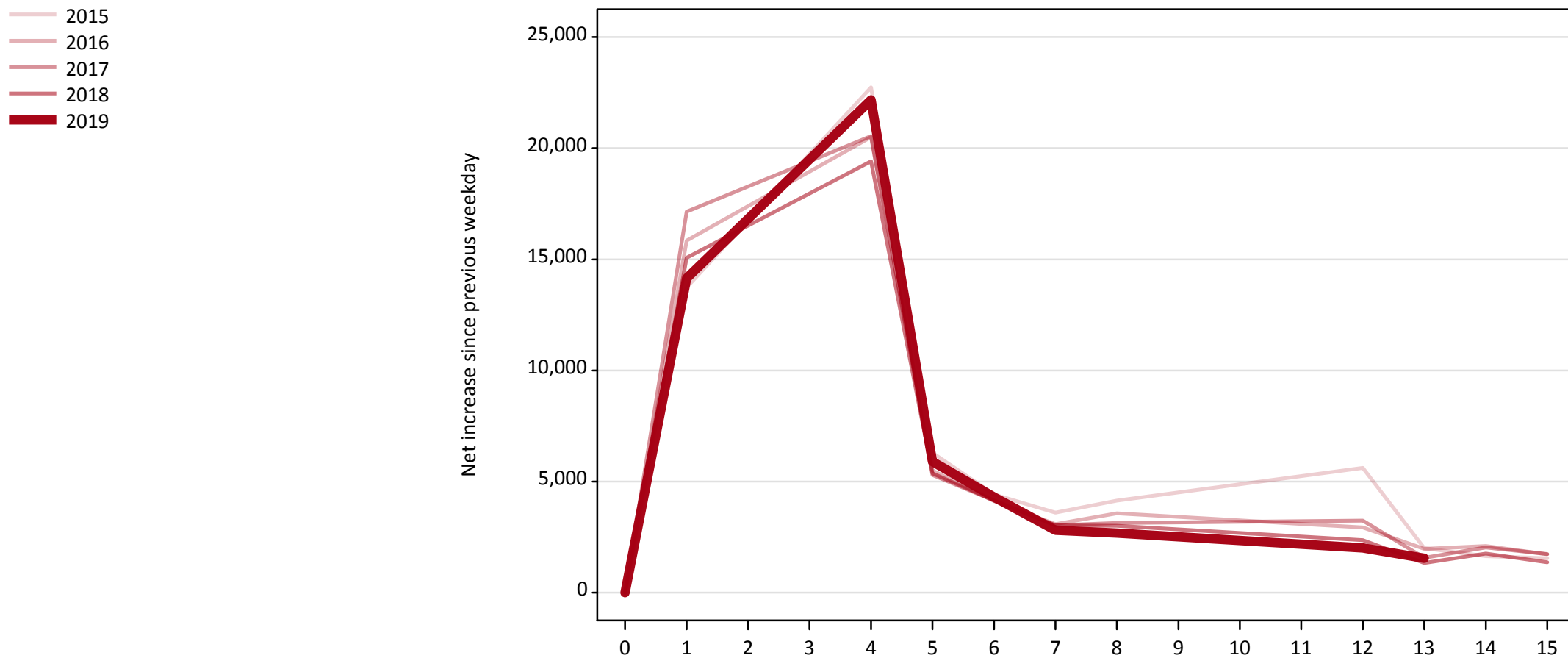
Direct to Clearing: difference between cycle and 2018 cycle

Applicant type	Status	2010	2011	2012	2013	2014	2015	2016	2017	2018	2019
Direct to Clearing	Placed (Direct to Clearing)	-58%	-51%	-38%	-19%	-29%	-19%	-13%	-8%	0%	6%
	Other (Direct to Clearing)	16%	15%	-6%	7%	-4%	5%	3%	6%	0%	12%

Note: The percentage change is not recorded in the above table for groups with fewer than 10 placed applicants in that cycle or in the 2018 cycle.

### A.18 All Placed: Daily net change (from England)

Net increase since previous weekday (2019 cycle up to 13 days after A level results day)

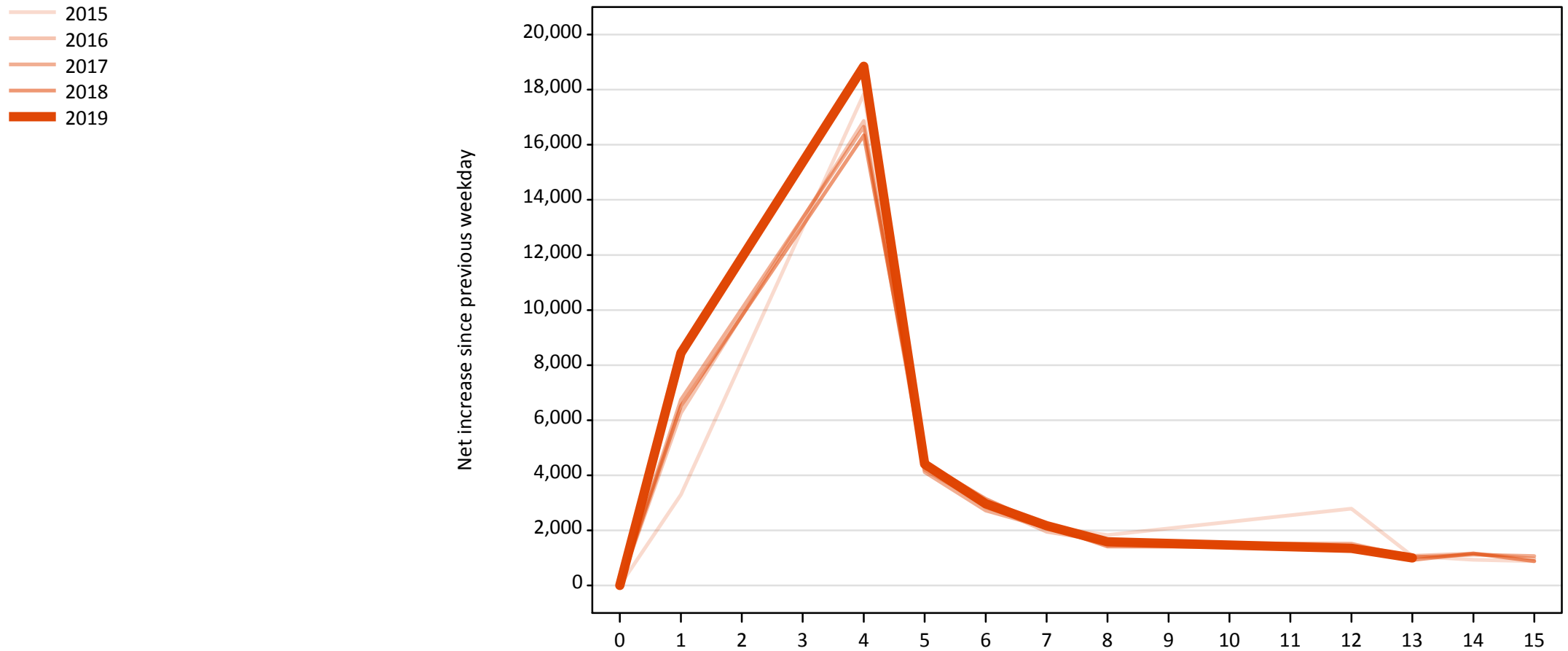


**A.19 All Placed: Daily net change (from England)**

Net increase since previous weekday (2019 cycle up to 13 days after A level results day)

Applicant status, days since A level results day		2015	2016	2017	2018	2019
All Placed	0	0	0	0	0	0
	1	13,730	15,840	17,150	15,070	14,150
	4	22,730	20,500	20,540	19,410	22,170
	5	6,300	5,500	5,300	5,370	5,900
	6	4,410	4,120	4,140	4,150	4,300
	7	3,600	3,080	3,030	3,030	2,800
	8	4,140	3,570	3,130	3,010	2,680
	12	5,610	2,940	3,240	2,360	2,020
	13	2,000	1,970	1,560	1,340	1,550
	14	1,640	2,100	2,030	1,760	
	15	1,540	1,730	1,740	1,360	

**A.20 Placed through Clearing only: Daily net change (from England)**  
Net increase since previous weekday (2019 cycle up to 13 days after A level results day)



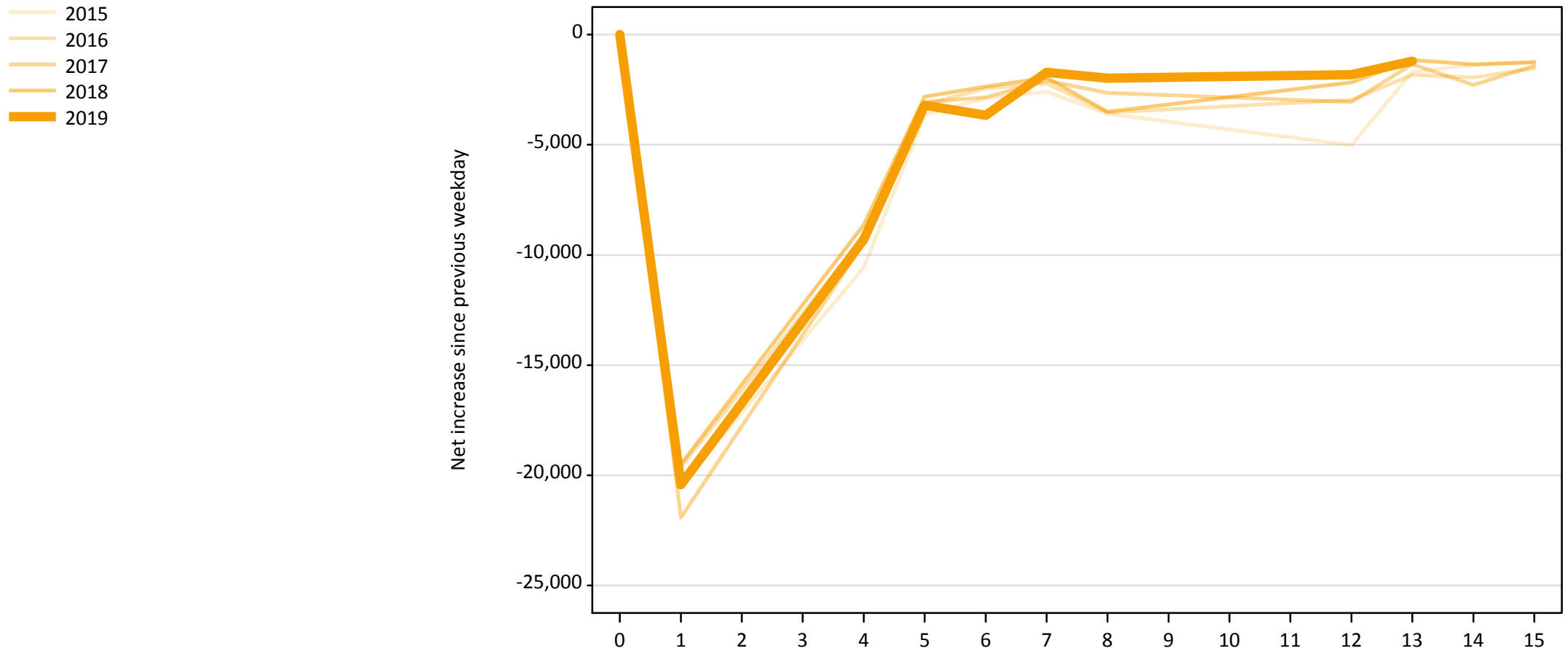
### A.21 Placed through Clearing only: Daily net change (from England)

Net increase since previous weekday (2019 cycle up to 13 days after A level results day)

Applicant status, days since A level results day		2015	2016	2017	2018	2019
Placed through Clearing only	0	0	0	0	0	0
	1	3,300	6,260	6,740	6,510	8,440
	4	17,850	16,870	16,660	16,340	18,850
	5	4,470	4,190	4,120	4,470	4,410
	6	2,830	2,940	2,720	3,150	2,970
	7	2,140	1,950	2,100	2,160	2,170
	8	1,830	1,590	1,540	1,410	1,580
	12	2,790	1,360	1,510	1,390	1,350
	13	1,060	1,080	1,020	920	1,000
	14	930	1,160	1,120	1,160	
	15	880	970	1,060	880	

### A.22 Holding Offer: Daily net change (from England)

Net increase since previous weekday (2019 cycle up to 13 days after A level results day)



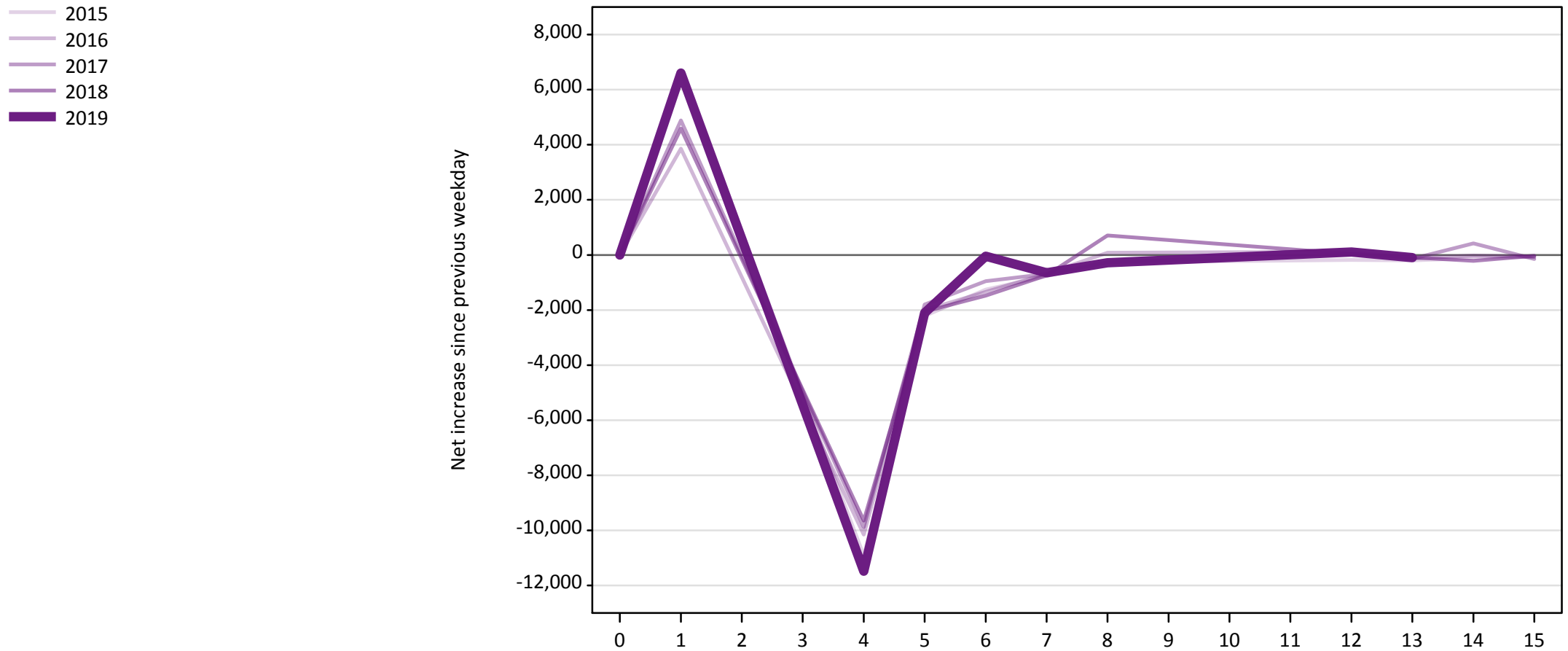


### A.23 Holding Offer: Daily net change (from England)

Net increase since previous weekday (2019 cycle up to 13 days after A level results day)

Applicant status, days since A level results day		2015	2016	2017	2018	2019
Holding Offer	0	0	0	0	0	0
	1	-20,460	-19,620	-21,920	-19,500	-20,430
	4	-10,580	-9,160	-9,470	-8,630	-9,300
	5	-3,660	-3,160	-3,060	-2,820	-3,210
	6	-2,870	-2,450	-2,840	-2,360	-3,660
	7	-2,590	-2,210	-2,080	-1,960	-1,720
	8	-3,590	-3,540	-2,650	-3,510	-1,980
	12	-5,010	-2,970	-3,060	-2,170	-1,820
	13	-1,690	-1,830	-1,340	-1,160	-1,210
	14	-1,370	-1,950	-2,290	-1,360	
	15	-1,280	-1,530	-1,420	-1,240	

**A.24 Free to be placed in Clearing: Daily net change (from England)**  
Net increase since previous weekday (2019 cycle up to 13 days after A level results day)



**A.25 Free to be placed in Clearing: Daily net change (from England)**

Net increase since previous weekday (2019 cycle up to 13 days after A level results day)

Applicant status, days since A level results day		2015	2016	2017	2018	2019
Free to be placed in Clearing	0	0	0	0	0	0
	1	6,690	3,860	4,890	4,590	6,600
	4	-10,920	-10,160	-9,880	-9,640	-11,480
	5	-2,220	-2,000	-1,800	-2,050	-2,110
	6	-1,260	-1,340	-950	-1,480	-40
	7	-770	-680	-690	-740	-640
	8	-270	80	-270	710	-290
	12	-190	110	50	40	110
	13	-200	-130	-140	-90	-100
	14	-120	-20	420	-220	
	15	-70	-70	-150	-30	