

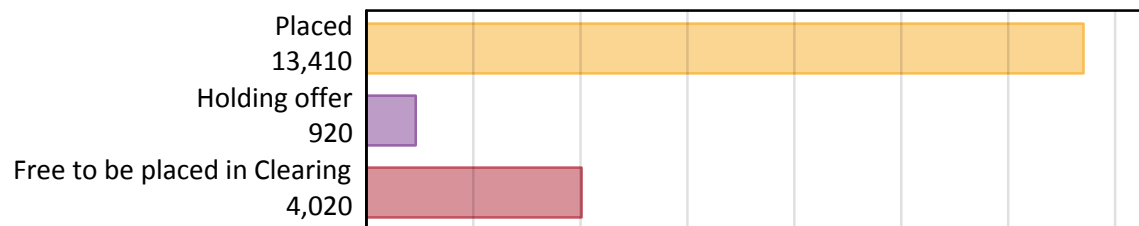
Daily Clearing Analysis: Overview

Analysis at 00:05 on Wednesday 28 August 2019 (13 days after A level results day)

A.1 Applicants by type and status from Northern Ireland, 2019 cycle

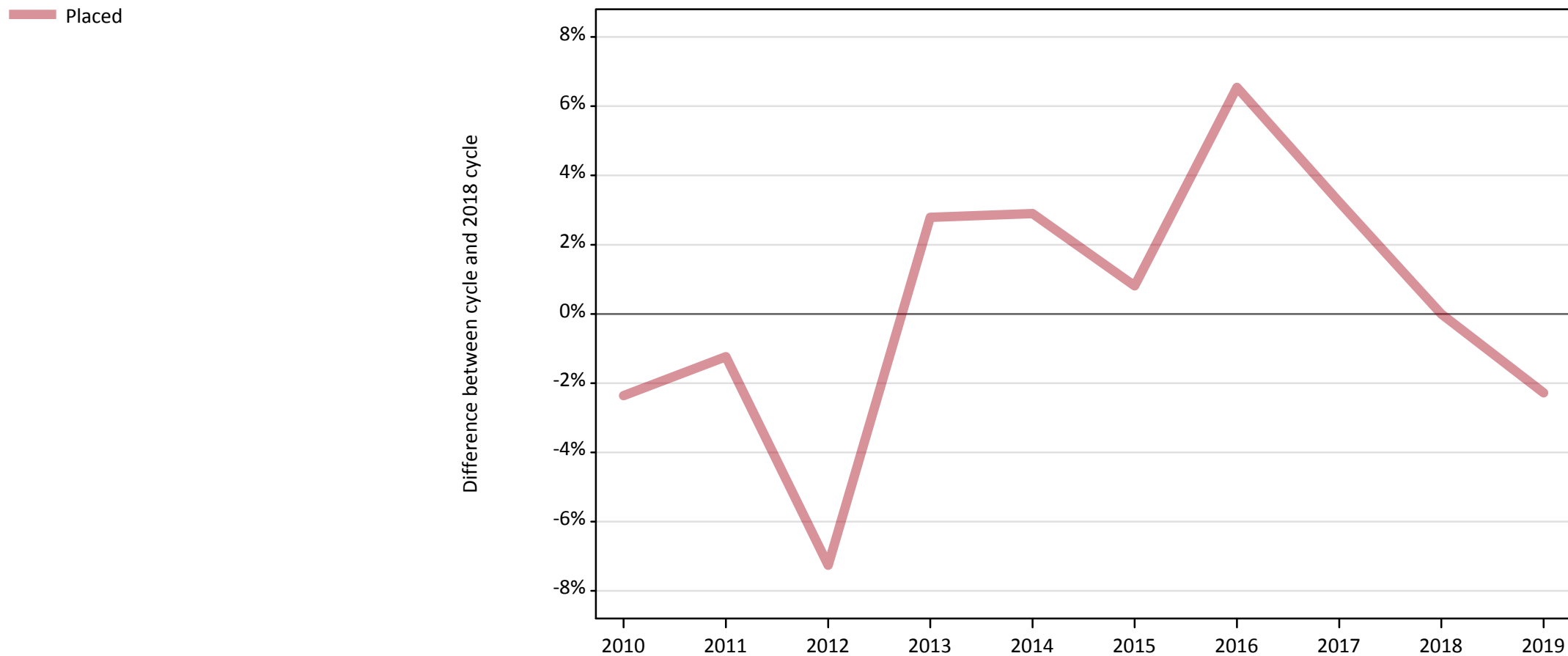
Applicant type	Status	2019
Main scheme	Placed (Clearing)	830
	Placed (Adjustment)	20
	Placed (Firm)	11,350
	Placed (Insurance)	980
	Placed (Other)	140
	Holding offer	920
	Free to be placed in Clearing	4,020
Direct to Clearing	Placed (Direct to Clearing)	100
	Other (Direct to Clearing)	90
All applicants	Placed	13,410

A.2 Summary of applicants who are placed, holding offers or free to be placed in Clearing (Northern Ireland)



A.3 All placed applicants from Northern Ireland: 13 days after A level results day

All placed applicants: difference between cycle and 2018 cycle



Note: The percentage change is not plotted in the above chart for groups with fewer than 30 placed applicants in any one cycle.

A.4 All placed applicants from Northern Ireland: 13 days after A level results day

All placed applicants: applicants at 13 days after A level results day

Applicant type	Status	2010	2011	2012	2013	2014	2015	2016	2017	2018	2019
All applicants	Placed	13,400	13,550	12,730	14,110	14,120	13,840	14,620	14,170	13,720	13,410

A.5 All placed applicants from Northern Ireland: 13 days after A level results day

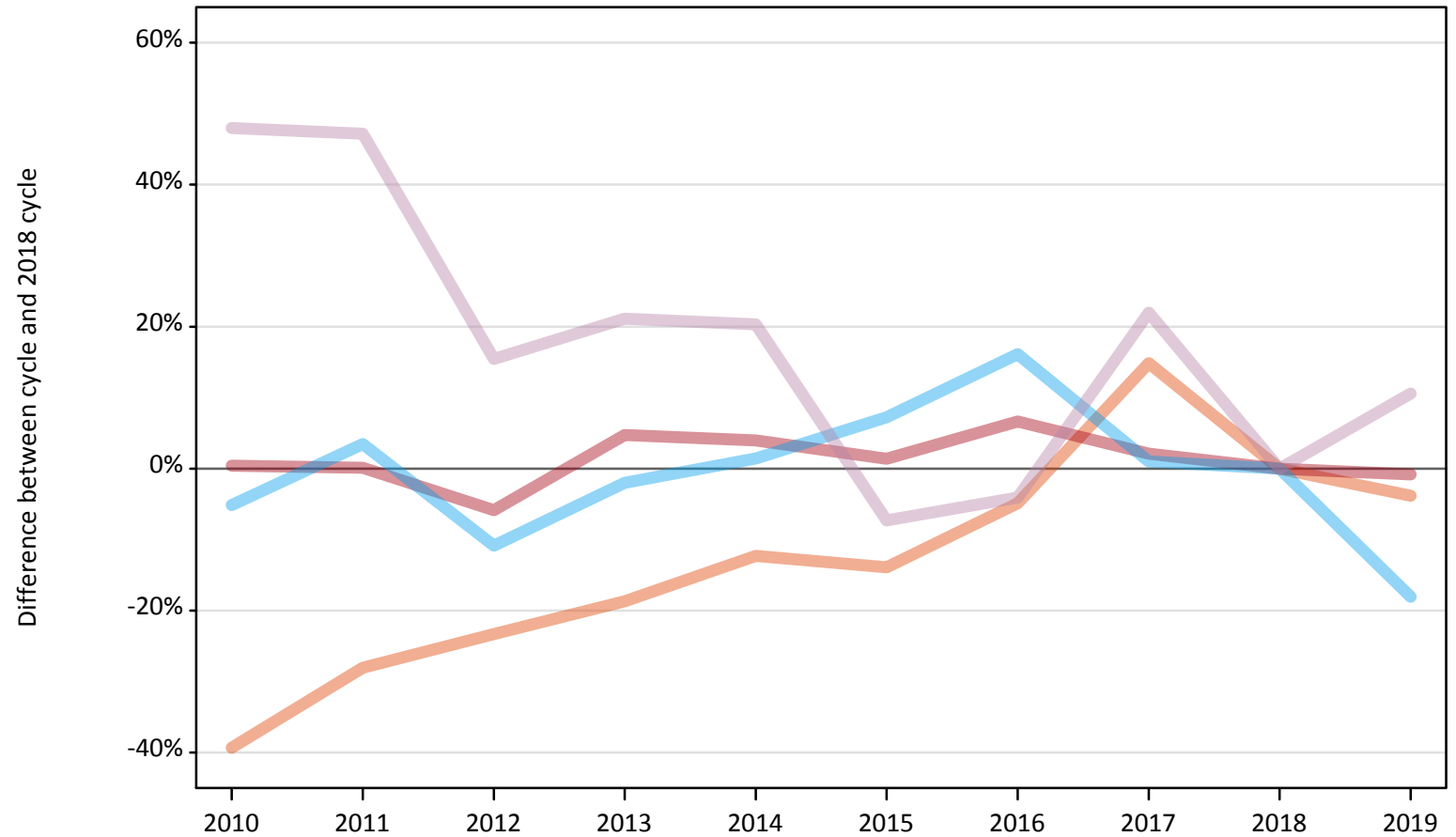
All placed applicants: difference between cycle and 2018 cycle

Applicant type	Status	2010	2011	2012	2013	2014	2015	2016	2017	2018	2019
All applicants	Placed	-2%	-1%	-7%	3%	3%	1%	7%	3%	0%	-2%

Note: The percentage change is not recorded in the above table for groups with fewer than 10 placed applicants in that cycle or in the 2018 cycle.

A.6 Placed main scheme applicants from Northern Ireland: 13 days after A level results day
All Main scheme placed routes (excluding Adjustment): difference between cycle and 2018 cycle

- Placed (Clearing)
- Placed (Firm)
- Placed (Insurance)
- Placed (Other)



Note: The percentage change is not plotted in the above chart for groups with fewer than 30 placed applicants in any one cycle.

A.7 Placed main scheme applicants from Northern Ireland: 13 days after A level results day

All Main scheme placed routes (excluding Adjustment): applicants at 13 days after A level results day

Applicant type	Status	2010	2011	2012	2013	2014	2015	2016	2017	2018	2019
Main scheme	Placed (Clearing)	520	620	660	700	760	740	820	990	860	830
	Placed (Firm)	11,490	11,460	10,780	11,990	11,900	11,610	12,200	11,690	11,450	11,350
	Placed (Insurance)	1,130	1,230	1,060	1,170	1,210	1,280	1,380	1,200	1,190	980
	Placed (Other)	180	180	140	150	150	110	120	150	120	140

A.8 Placed main scheme applicants from Northern Ireland: 13 days after A level results day

All Main scheme placed routes (excluding Adjustment): difference between cycle and 2018 cycle

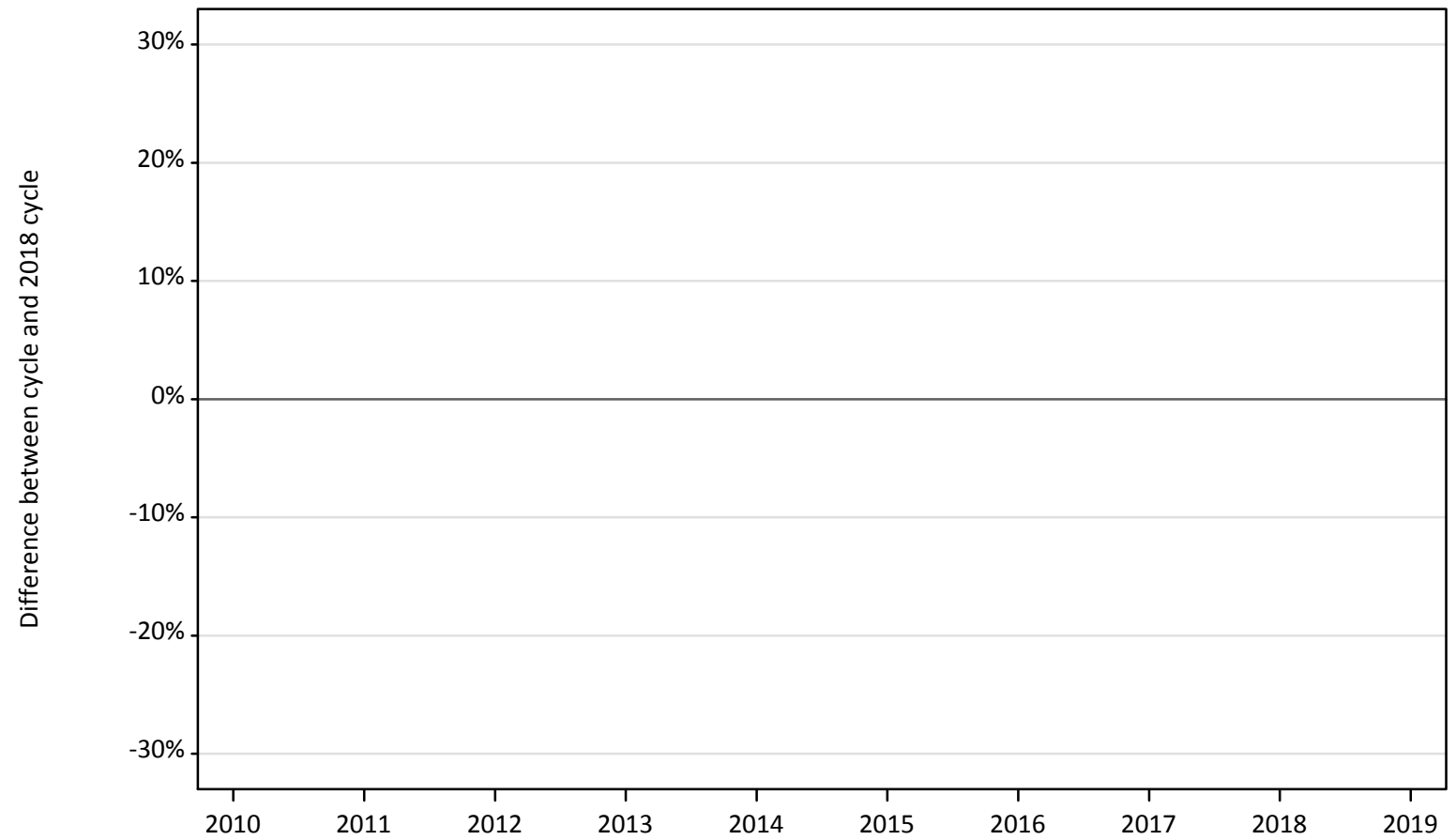
Applicant type	Status	2010	2011	2012	2013	2014	2015	2016	2017	2018	2019
Main scheme	Placed (Clearing)	-39%	-28%	-23%	-19%	-12%	-14%	-5%	15%	0%	-4%
	Placed (Firm)	0%	0%	-6%	5%	4%	1%	7%	2%	0%	-1%
	Placed (Insurance)	-5%	3%	-11%	-2%	1%	7%	16%	1%	0%	-18%
	Placed (Other)	48%	47%	15%	21%	20%	-7%	-4%	22%	0%	11%

Note: The percentage change is not recorded in the above table for groups with fewer than 10 placed applicants in that cycle or in the 2018 cycle.

A.9 Main scheme applicants placed through adjustment: 13 days after A level results day

Placed through adjustment: difference between cycle and 2018 cycle

Placed (Adjustment)



Note: The percentage change is not plotted in the above chart for groups with fewer than 30 placed applicants in any one cycle.

A.10 Main scheme applicants placed through adjustment: 13 days after A level results day

Placed through adjustment: applicants at 13 days after A level results day

Applicant type	Status	2010	2011	2012	2013	2014	2015	2016	2017	2018	2019
Main scheme	Placed (Adjustment)	30	20	30	30	30	40	30	30	20	20

A.11 Main scheme applicants placed through adjustment: 13 days after A level results day

Placed through adjustment: difference between cycle and 2018 cycle

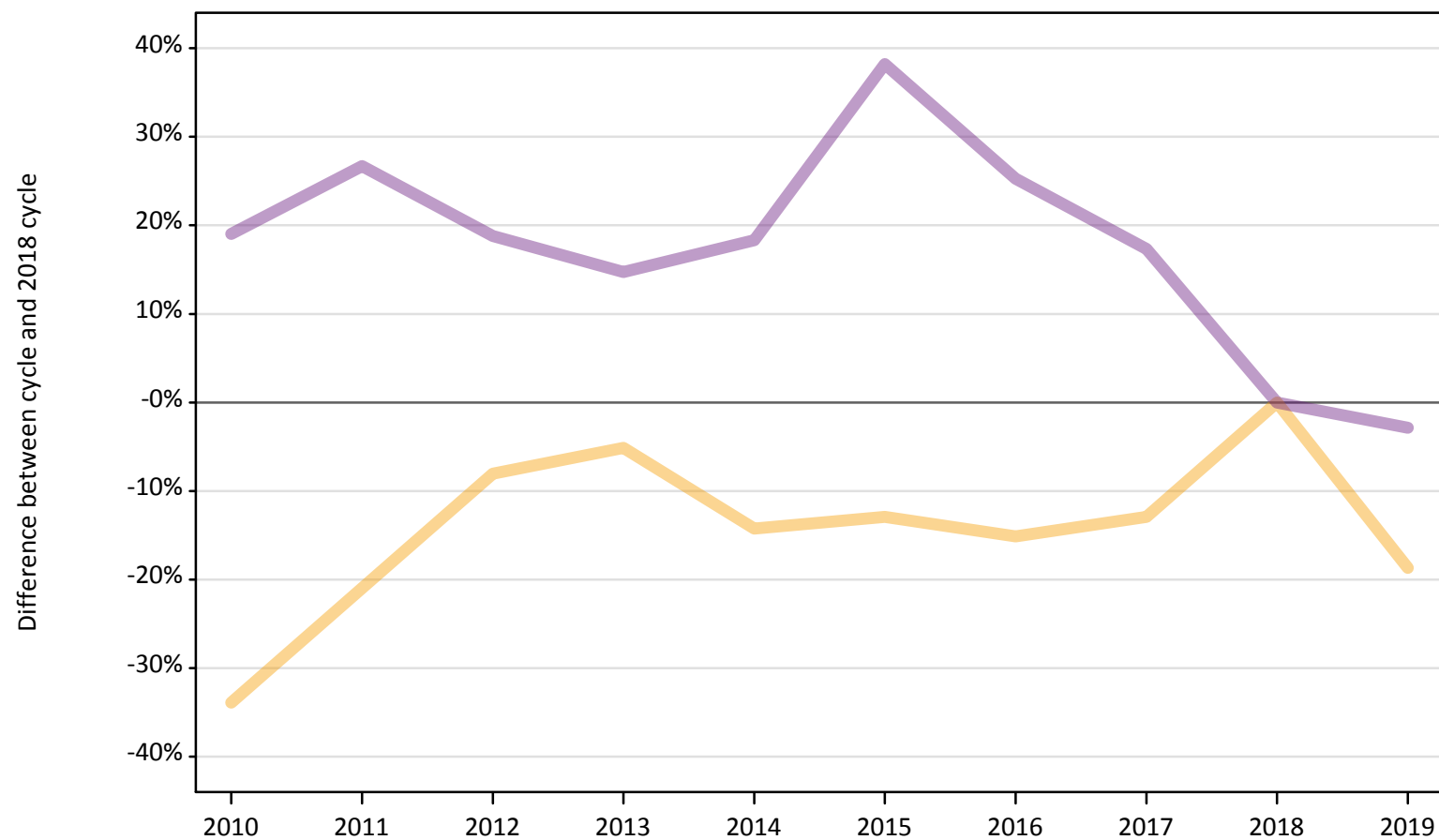
Applicant type	Status	2010	2011	2012	2013	2014	2015	2016	2017	2018	2019
Main scheme	Placed (Adjustment)	25%	-5%	30%	60%	50%	75%	25%	70%	0%	0%

Note: The percentage change is not recorded in the above table for groups with fewer than 10 placed applicants in that cycle or in the 2018 cycle.

A.12 Main scheme applicants not currently placed from Northern Ireland: 13 days after A level results day

Applicants in unplaced states: difference between cycle and 2018 cycle

— Holding offer
— Free to be placed in Clearing



Note: The percentage change is not plotted in the above chart for groups with fewer than 30 unplaced applicants in any one cycle.

A.13 Main scheme applicants not currently placed from Northern Ireland: 13 days after A level results day

Applicants in unplaced states: applicants at 13 days after A level results day

Applicant type	Status	2010	2011	2012	2013	2014	2015	2016	2017	2018	2019
Main scheme	Holding offer	750	890	1,040	1,070	970	980	960	980	1,130	920
	Free to be placed in Clearing	4,930	5,240	4,920	4,750	4,900	5,720	5,180	4,860	4,140	4,020

A.14 Main scheme applicants not currently placed from Northern Ireland: 13 days after A level results day

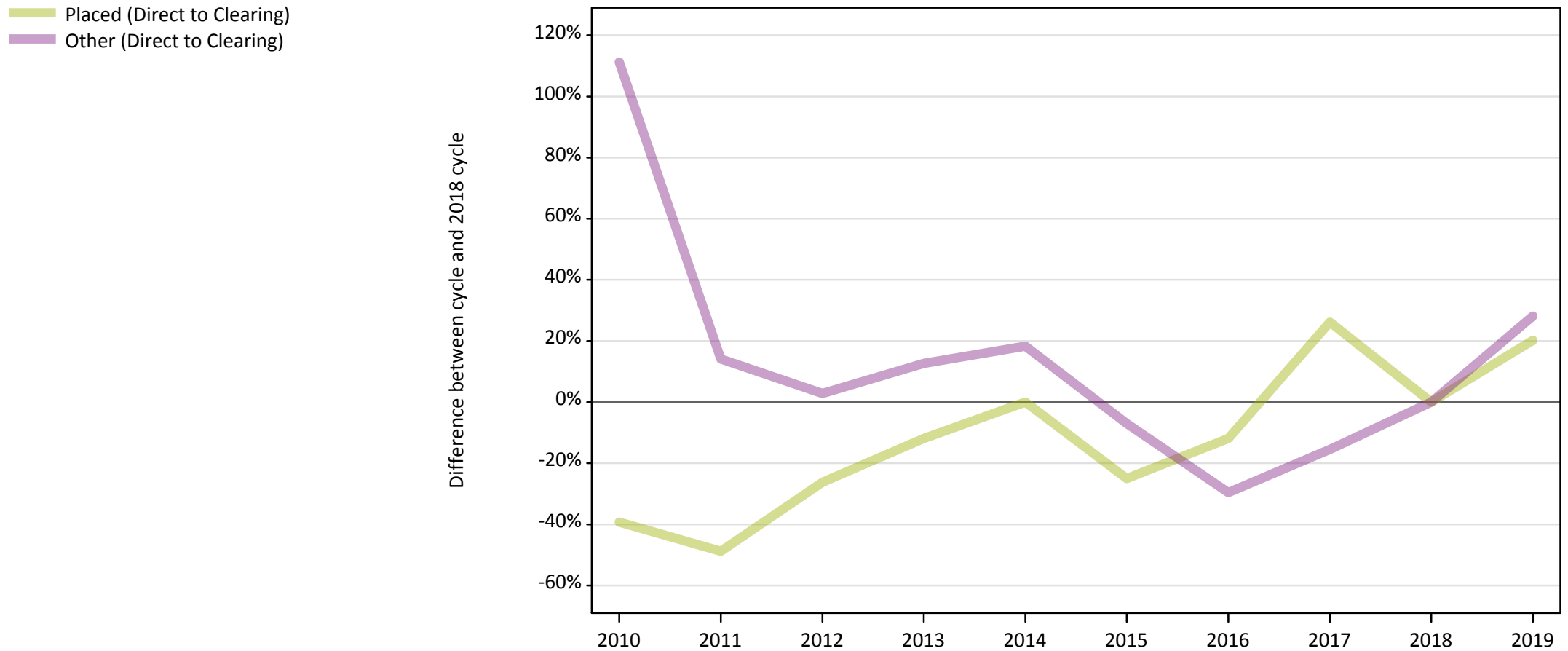
Applicants in unplaced states: difference between cycle and 2018 cycle

Applicant type	Status	2010	2011	2012	2013	2014	2015	2016	2017	2018	2019
Main scheme	Holding offer	-34%	-21%	-8%	-5%	-14%	-13%	-15%	-13%	0%	-19%
	Free to be placed in Clearing	19%	27%	19%	15%	18%	38%	25%	17%	0%	-3%

Note: The percentage change is not recorded in the above table for groups with fewer than 10 unplaced applicants in that cycle or in the 2018 cycle.

A.15 Direct to Clearing applicants from Northern Ireland: 13 days after A level results day

Direct to Clearing: difference between cycle and 2018 cycle



Note: The percentage change is not plotted in the above chart for groups with fewer than 30 placed applicants in any one cycle.

A.16 Direct to Clearing applicants from Northern Ireland: 13 days after A level results day

Direct to Clearing 13 days after A level results day

Applicant type	Status	2010	2011	2012	2013	2014	2015	2016	2017	2018	2019
Direct to Clearing	Placed (Direct to Clearing)	50	40	60	70	80	60	70	110	80	100
	Other (Direct to Clearing)	150	80	70	80	80	70	50	60	70	90

A.17 Direct to Clearing applicants from Northern Ireland: 13 days after A level results day

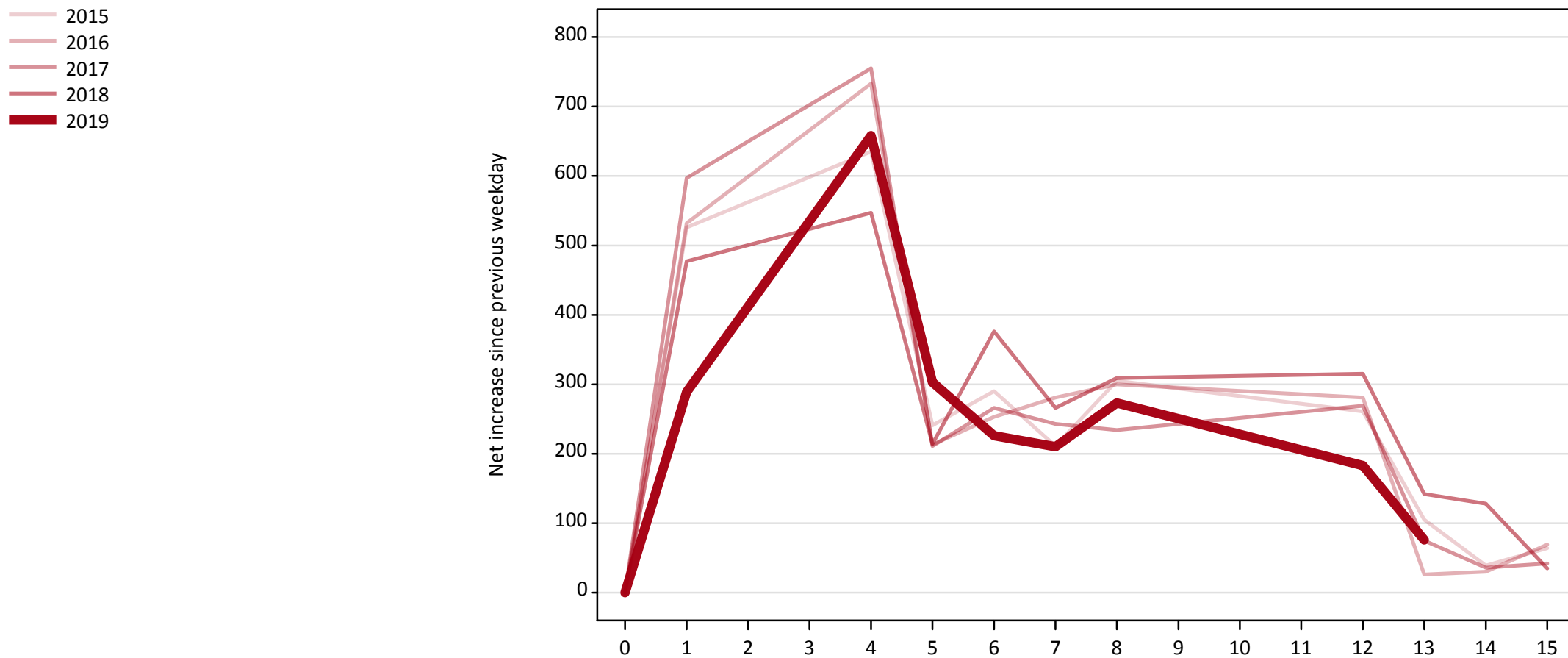
Direct to Clearing: difference between cycle and 2018 cycle

Applicant type	Status	2010	2011	2012	2013	2014	2015	2016	2017	2018	2019
Direct to Clearing	Placed (Direct to Clearing)	-39%	-49%	-26%	-12%	0%	-25%	-12%	26%	0%	20%
	Other (Direct to Clearing)	111%	14%	3%	13%	18%	-7%	-30%	-15%	0%	28%

Note: The percentage change is not recorded in the above table for groups with fewer than 10 placed applicants in that cycle or in the 2018 cycle.

A.18 All Placed: Daily net change (from Northern Ireland)

Net increase since previous weekday (2019 cycle up to 13 days after A level results day)



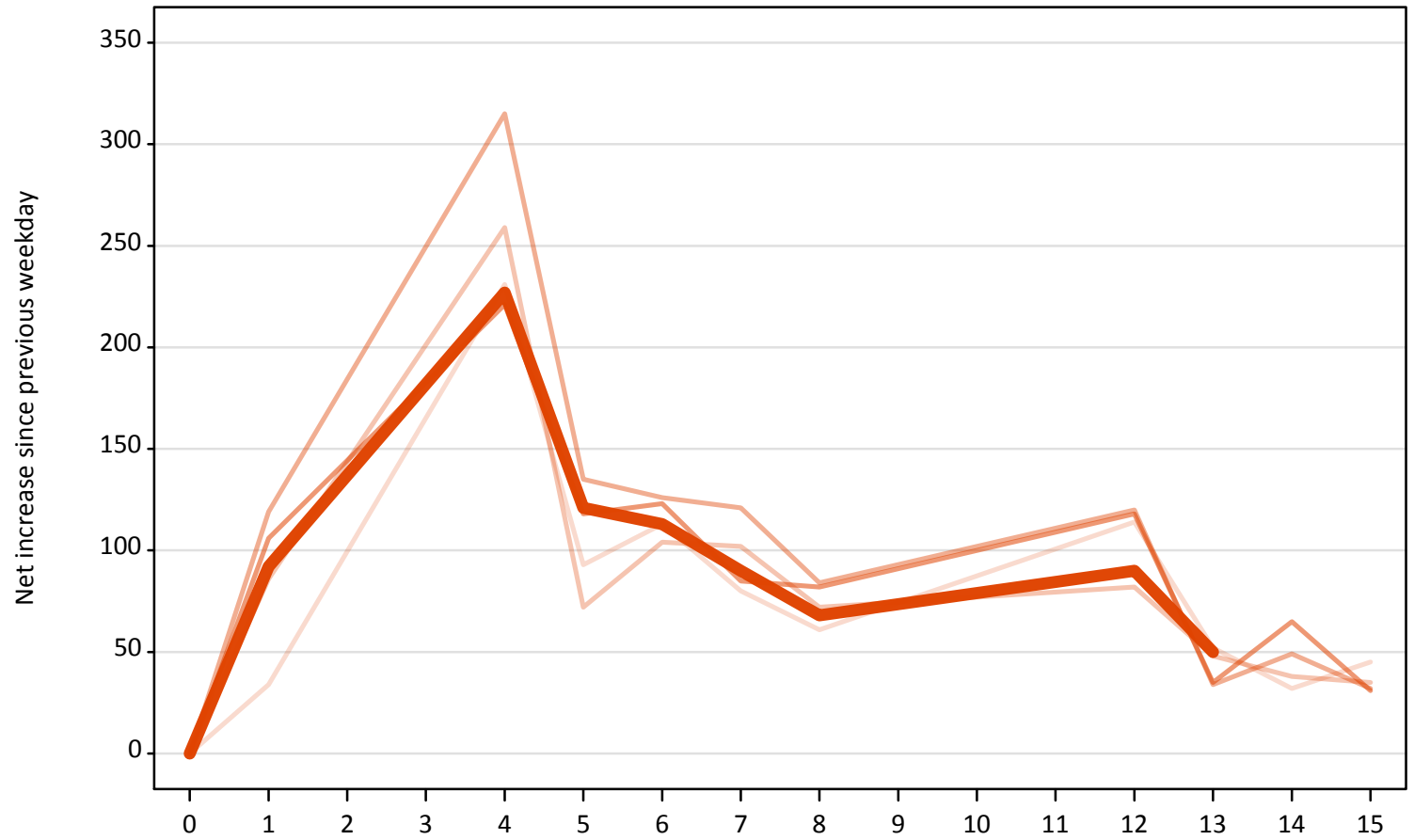
A.19 All Placed: Daily net change (from Northern Ireland)

Net increase since previous weekday (2019 cycle up to 13 days after A level results day)

Applicant status, days since A level results day		2015	2016	2017	2018	2019
All Placed	0	0	0	0	0	0
	1	530	530	600	480	290
	4	640	730	760	550	660
	5	240	210	210	210	300
	6	290	250	270	380	230
	7	210	280	240	270	210
	8	310	300	230	310	270
	12	260	280	270	320	180
	13	110	30	80	140	80
	14	40	30	40	130	
	15	60	70	40	40	

A.20 Placed through Clearing only: Daily net change (from Northern Ireland)
Net increase since previous weekday (2019 cycle up to 13 days after A level results day)

- 2015
- 2016
- 2017
- 2018
- 2019**



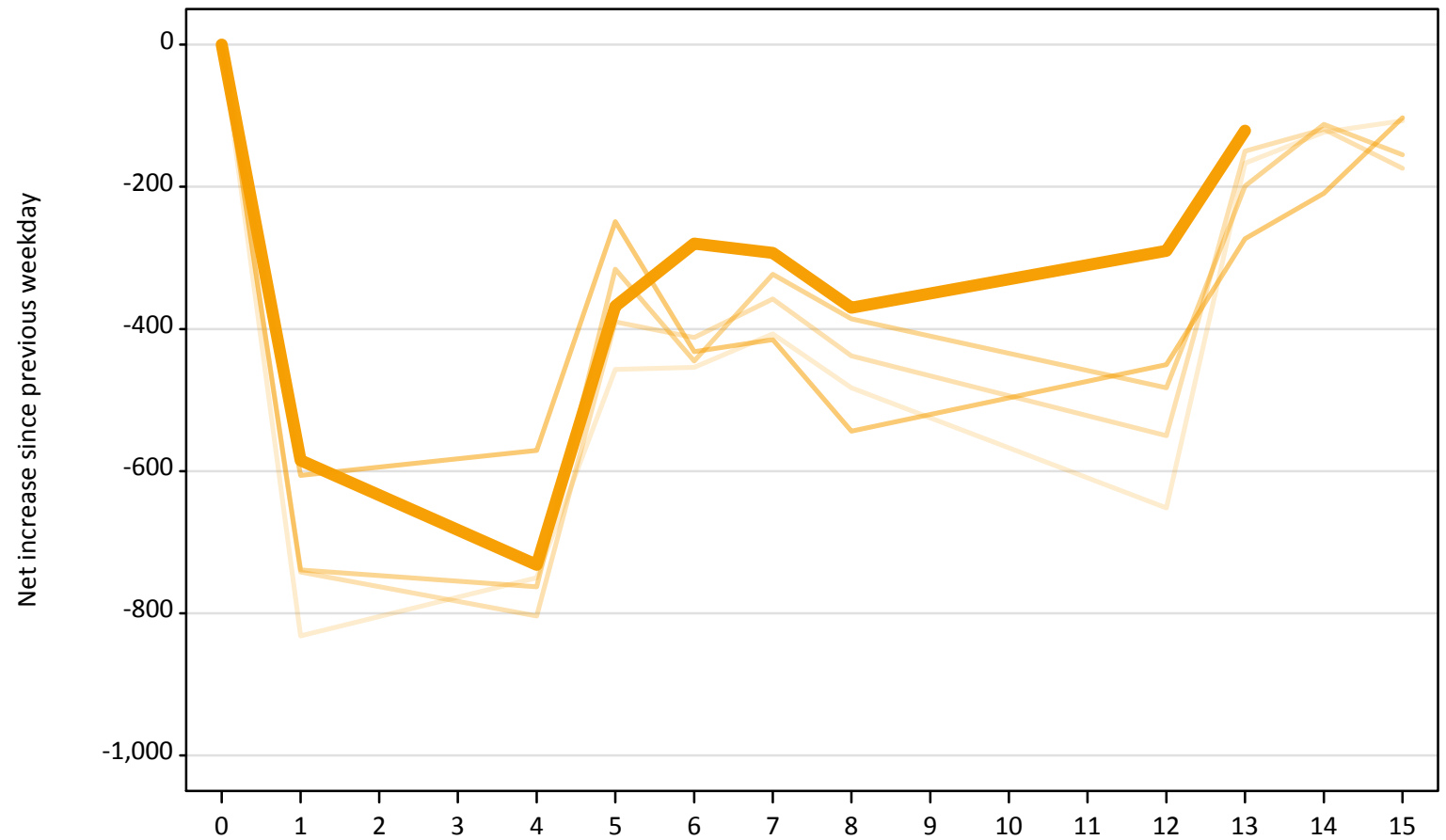
A.21 Placed through Clearing only: Daily net change (from Northern Ireland)

Net increase since previous weekday (2019 cycle up to 13 days after A level results day)

Applicant status, days since A level results day		2015	2016	2017	2018	2019
Placed through Clearing only	0	0	0	0	0	0
	1	30	90	120	110	90
	4	230	260	320	220	230
	5	90	70	140	120	120
	6	110	100	130	120	110
	7	80	100	120	90	90
	8	60	70	80	80	70
	12	110	80	120	120	90
	13	50	50	30	40	50
	14	30	40	50	70	
	15	50	40	30	30	

A.22 Holding Offer: Daily net change (from Northern Ireland)
Net increase since previous weekday (2019 cycle up to 13 days after A level results day)

- 2015
- 2016
- 2017
- 2018
- 2019**



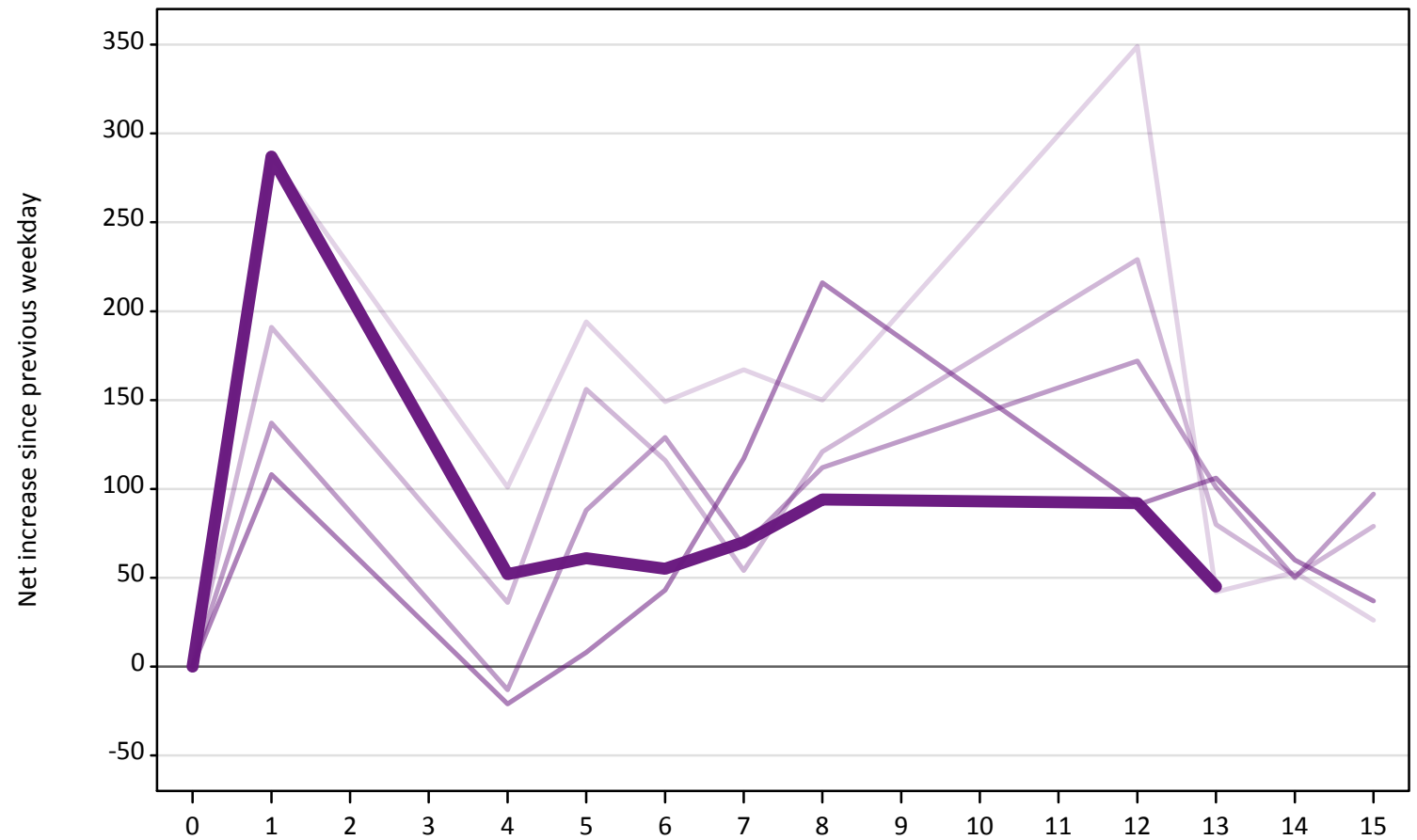
A.23 Holding Offer: Daily net change (from Northern Ireland)

Net increase since previous weekday (2019 cycle up to 13 days after A level results day)

Applicant status, days since A level results day	2015	2016	2017	2018	2019	
Holding Offer	0	0	0	0	0	
	1	-830	-740	-740	-610	-590
	4	-750	-800	-760	-570	-730
	5	-460	-390	-320	-250	-370
	6	-450	-410	-450	-430	-280
	7	-410	-360	-320	-420	-290
	8	-480	-440	-390	-540	-370
	12	-650	-550	-480	-450	-290
	13	-170	-150	-200	-270	-120
	14	-120	-120	-110	-210	
	15	-110	-170	-160	-100	

A.24 Free to be placed in Clearing: Daily net change (from Northern Ireland)
Net increase since previous weekday (2019 cycle up to 13 days after A level results day)

- 2015
- 2016
- 2017
- 2018
- 2019



A.25 Free to be placed in Clearing: Daily net change (from Northern Ireland)

Net increase since previous weekday (2019 cycle up to 13 days after A level results day)

Applicant status, days since A level results day		2015	2016	2017	2018	2019
Free to be placed in Clearing	0	0	0	0	0	0
	1	290	190	140	110	290
	4	100	40	-10	-20	50
	5	190	160	90	10	60
	6	150	120	130	40	60
	7	170	50	70	120	70
	8	150	120	110	220	90
	12	350	230	170	90	90
	13	40	80	100	110	50
	14	50	50	50	60	
	15	30	80	100	40	