

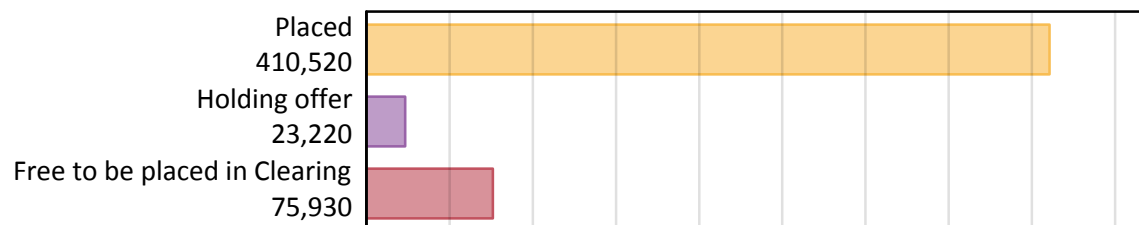
Daily Clearing Analysis: Overview

Analysis at 00:05 on Wednesday 28 August 2019 (13 days after A level results day)

A.1 Applicants by type and status from the UK, 2019 cycle

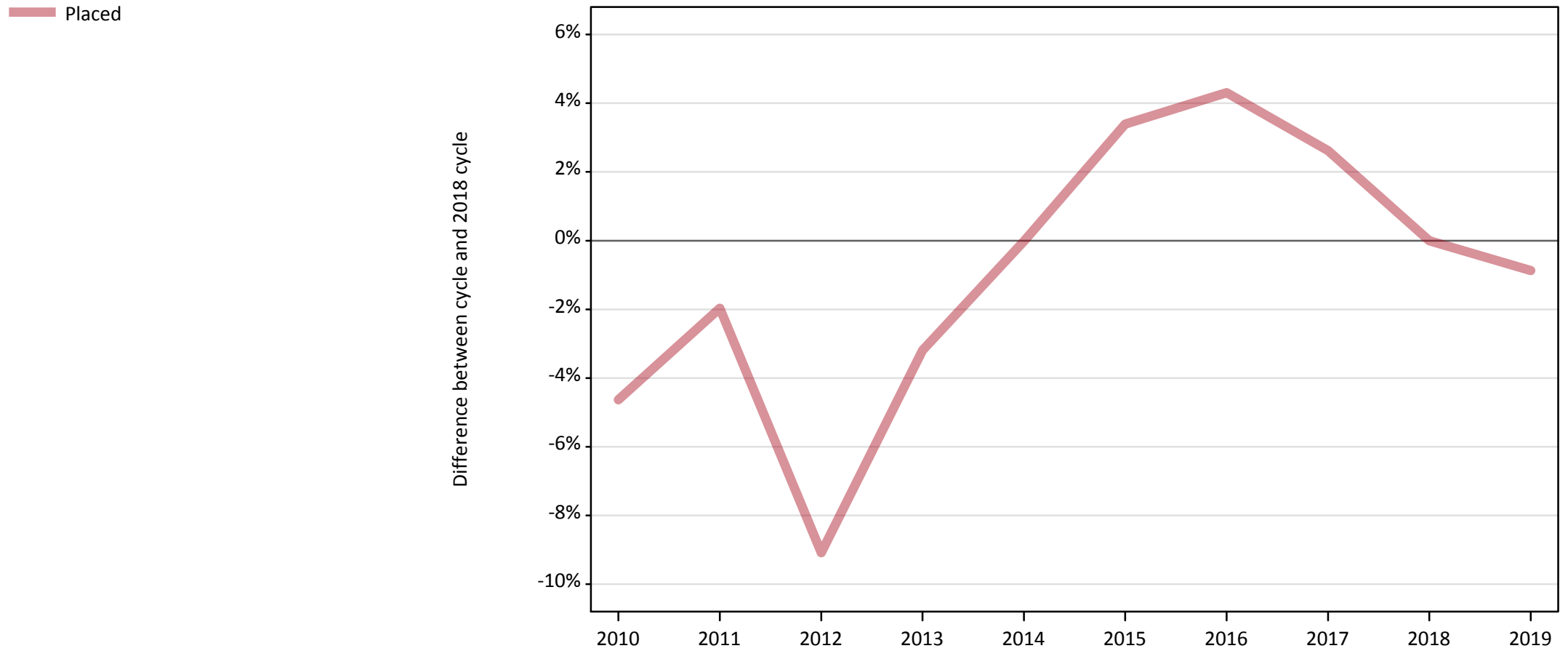
Applicant type	Status	2019
Main scheme	Placed (Clearing)	40,030
	Placed (Adjustment)	530
	Placed (Firm)	322,020
	Placed (Insurance)	27,750
	Placed (Other)	10,380
	Holding offer	23,220
	Free to be placed in Clearing	75,930
Direct to Clearing	Placed (Direct to Clearing)	9,820
	Other (Direct to Clearing)	7,440
All applicants	Placed	410,520

A.2 Summary of applicants who are placed, holding offers or free to be placed in Clearing (the UK)



A.3 All placed applicants from the UK: 13 days after A level results day

All placed applicants: difference between cycle and 2018 cycle



Note: The percentage change is not plotted in the above chart for groups with fewer than 30 placed applicants in any one cycle.

A.4 All placed applicants from the UK: 13 days after A level results day

All placed applicants: applicants at 13 days after A level results day

Applicant type	Status	2010	2011	2012	2013	2014	2015	2016	2017	2018	2019
All applicants	Placed	394,930	405,970	376,510	400,900	414,050	428,160	431,950	424,970	414,120	410,520

A.5 All placed applicants from the UK: 13 days after A level results day

All placed applicants: difference between cycle and 2018 cycle

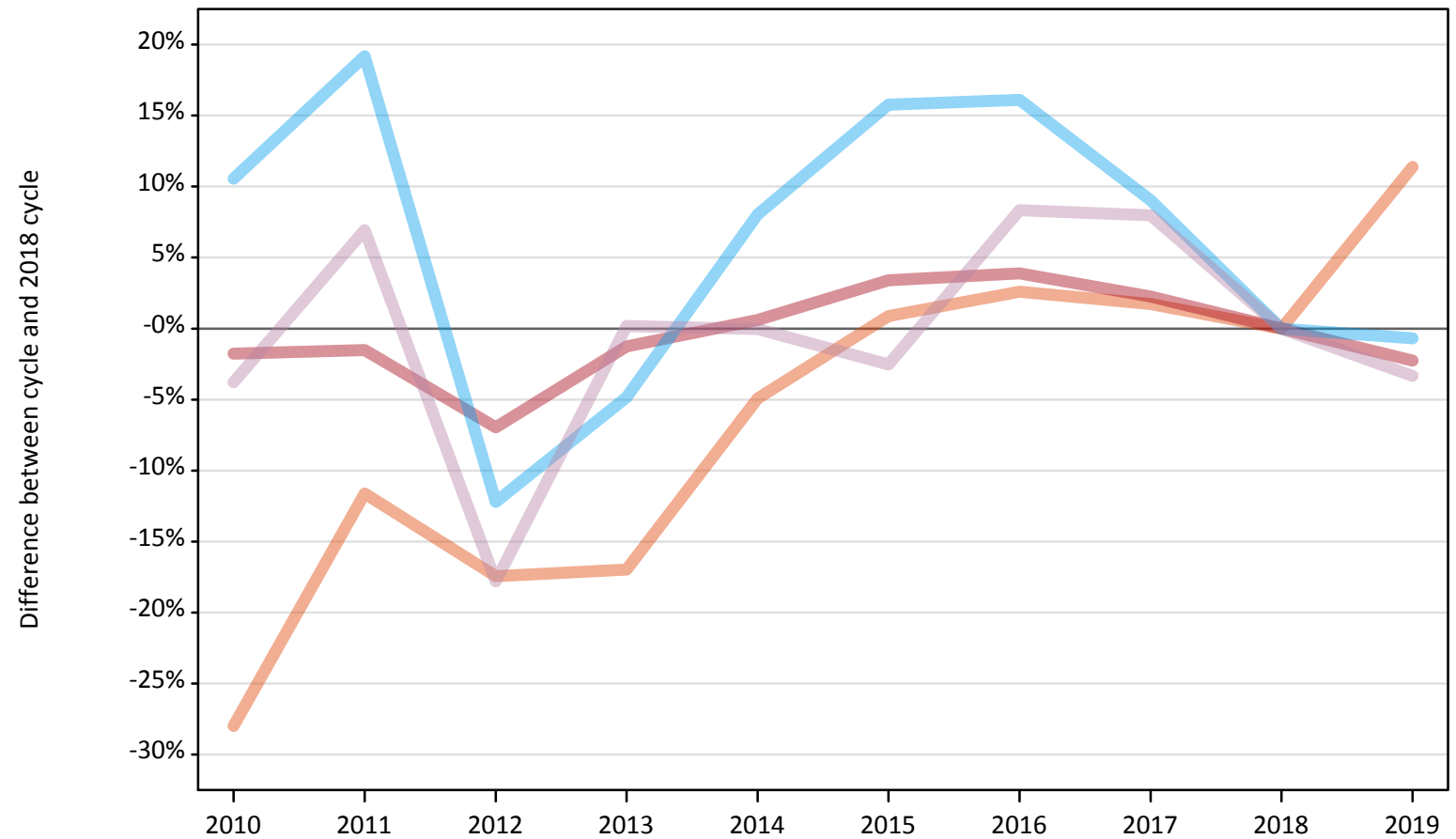
Applicant type	Status	2010	2011	2012	2013	2014	2015	2016	2017	2018	2019
All applicants	Placed	-5%	-2%	-9%	-3%	-0%	3%	4%	3%	0%	-1%

Note: The percentage change is not recorded in the above table for groups with fewer than 10 placed applicants in that cycle or in the 2018 cycle.

A.6 Placed main scheme applicants from the UK: 13 days after A level results day

All Main scheme placed routes (excluding Adjustment): difference between cycle and 2018 cycle

- Placed (Clearing)
- Placed (Firm)
- Placed (Insurance)
- Placed (Other)



Note: The percentage change is not plotted in the above chart for groups with fewer than 30 placed applicants in any one cycle.

A.7 Placed main scheme applicants from the UK: 13 days after A level results day

All Main scheme placed routes (excluding Adjustment): applicants at 13 days after A level results day

Applicant type	Status	2010	2011	2012	2013	2014	2015	2016	2017	2018	2019
Main scheme	Placed (Clearing)	25,880	31,760	29,670	29,840	34,170	36,260	36,870	36,550	35,940	40,030
	Placed (Firm)	323,620	324,490	306,550	325,320	331,450	340,650	342,290	336,910	329,460	322,020
	Placed (Insurance)	30,890	33,310	24,530	26,590	30,190	32,350	32,450	30,470	27,950	27,750
	Placed (Other)	10,330	11,480	8,830	10,750	10,730	10,460	11,630	11,590	10,740	10,380

A.8 Placed main scheme applicants from the UK: 13 days after A level results day

All Main scheme placed routes (excluding Adjustment): difference between cycle and 2018 cycle

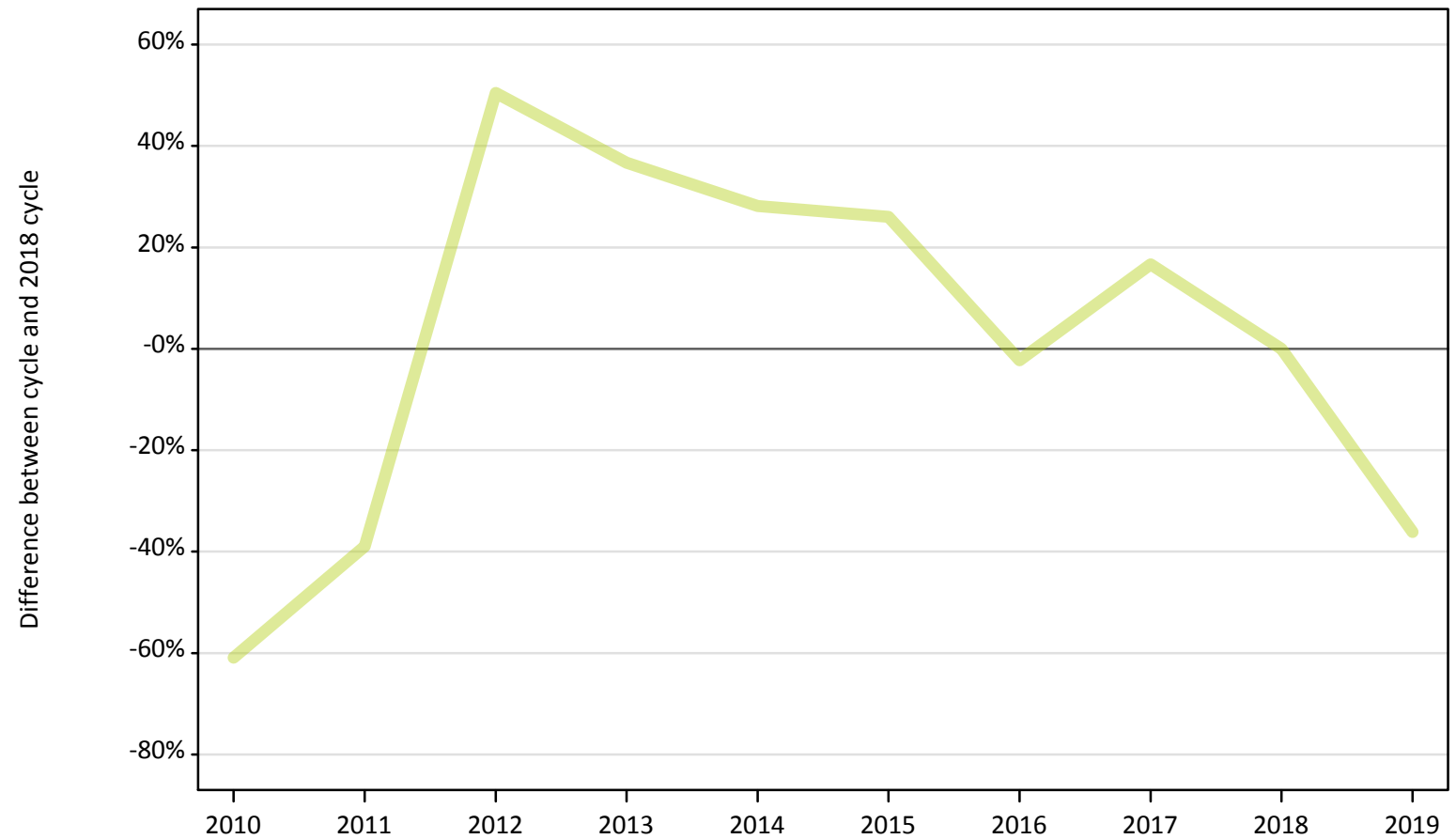
Applicant type	Status	2010	2011	2012	2013	2014	2015	2016	2017	2018	2019
Main scheme	Placed (Clearing)	-28%	-12%	-17%	-17%	-5%	1%	3%	2%	0%	11%
	Placed (Firm)	-2%	-2%	-7%	-1%	1%	3%	4%	2%	0%	-2%
	Placed (Insurance)	11%	19%	-12%	-5%	8%	16%	16%	9%	0%	-1%
	Placed (Other)	-4%	7%	-18%	0%	-0%	-3%	8%	8%	0%	-3%

Note: The percentage change is not recorded in the above table for groups with fewer than 10 placed applicants in that cycle or in the 2018 cycle.

A.9 Main scheme applicants placed through adjustment: 13 days after A level results day

Placed through adjustment: difference between cycle and 2018 cycle

Placed (Adjustment)



Note: The percentage change is not plotted in the above chart for groups with fewer than 30 placed applicants in any one cycle.

A.10 Main scheme applicants placed through adjustment: 13 days after A level results day

Placed through adjustment: applicants at 13 days after A level results day

Applicant type	Status	2010	2011	2012	2013	2014	2015	2016	2017	2018	2019
Main scheme	Placed (Adjustment)	330	510	1,260	1,140	1,070	1,050	820	970	830	530

A.11 Main scheme applicants placed through adjustment: 13 days after A level results day

Placed through adjustment: difference between cycle and 2018 cycle

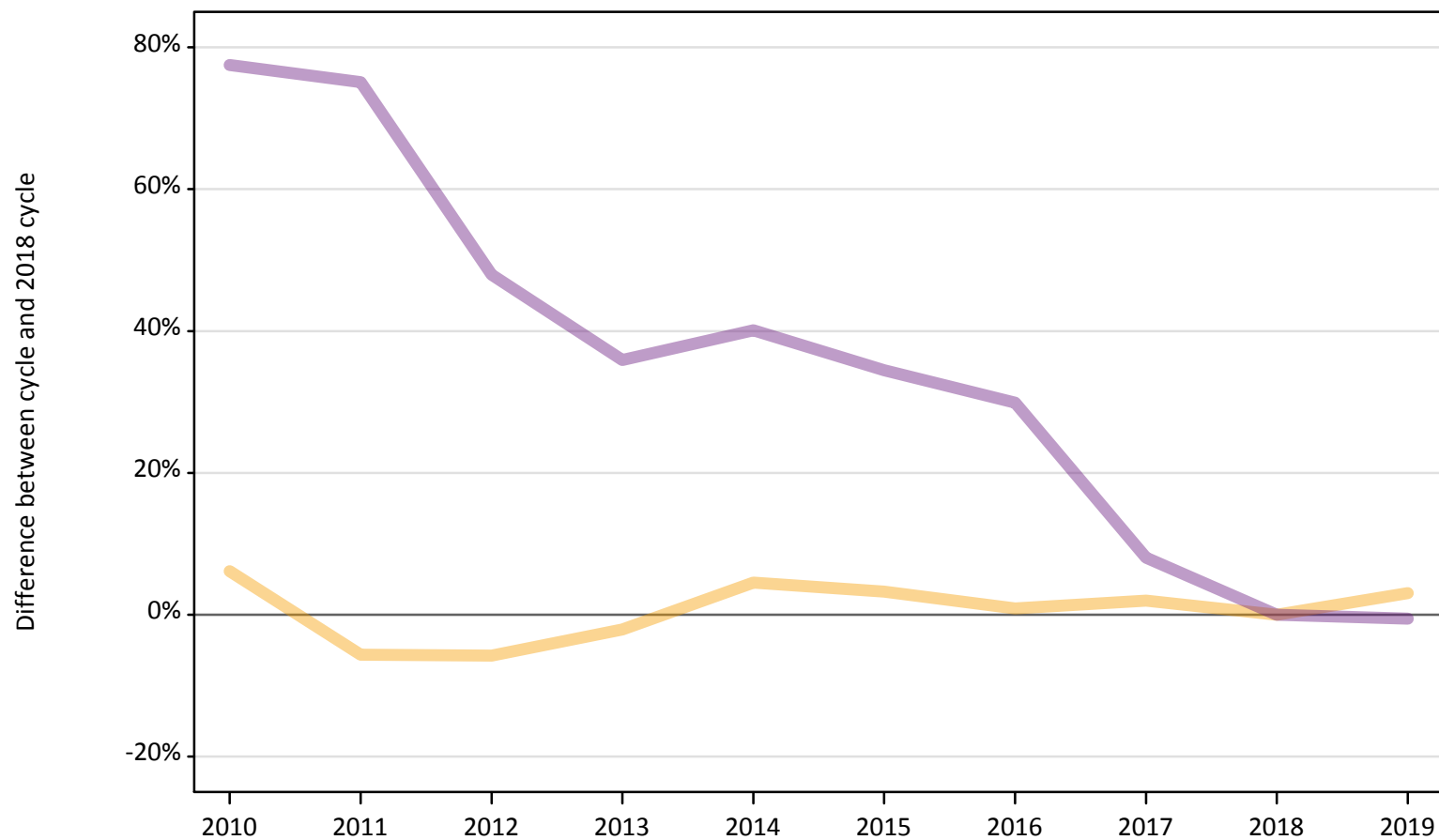
Applicant type	Status	2010	2011	2012	2013	2014	2015	2016	2017	2018	2019
Main scheme	Placed (Adjustment)	-61%	-39%	50%	37%	28%	26%	-2%	17%	0%	-36%

Note: The percentage change is not recorded in the above table for groups with fewer than 10 placed applicants in that cycle or in the 2018 cycle.

A.12 Main scheme applicants not currently placed from the UK: 13 days after A level results day

Applicants in unplaced states: difference between cycle and 2018 cycle

— Holding offer
— Free to be placed in Clearing



Note: The percentage change is not plotted in the above chart for groups with fewer than 30 unplaced applicants in any one cycle.

A.13 Main scheme applicants not currently placed from the UK: 13 days after A level results day

Applicants in unplaced states: applicants at 13 days after A level results day

Applicant type	Status	2010	2011	2012	2013	2014	2015	2016	2017	2018	2019
Main scheme	Holding offer	23,930	21,270	21,240	22,070	23,560	23,280	22,740	22,990	22,540	23,220
	Free to be placed in Clearing	135,530	133,690	112,940	103,760	106,970	102,690	99,190	82,490	76,350	75,930

A.14 Main scheme applicants not currently placed from the UK: 13 days after A level results day

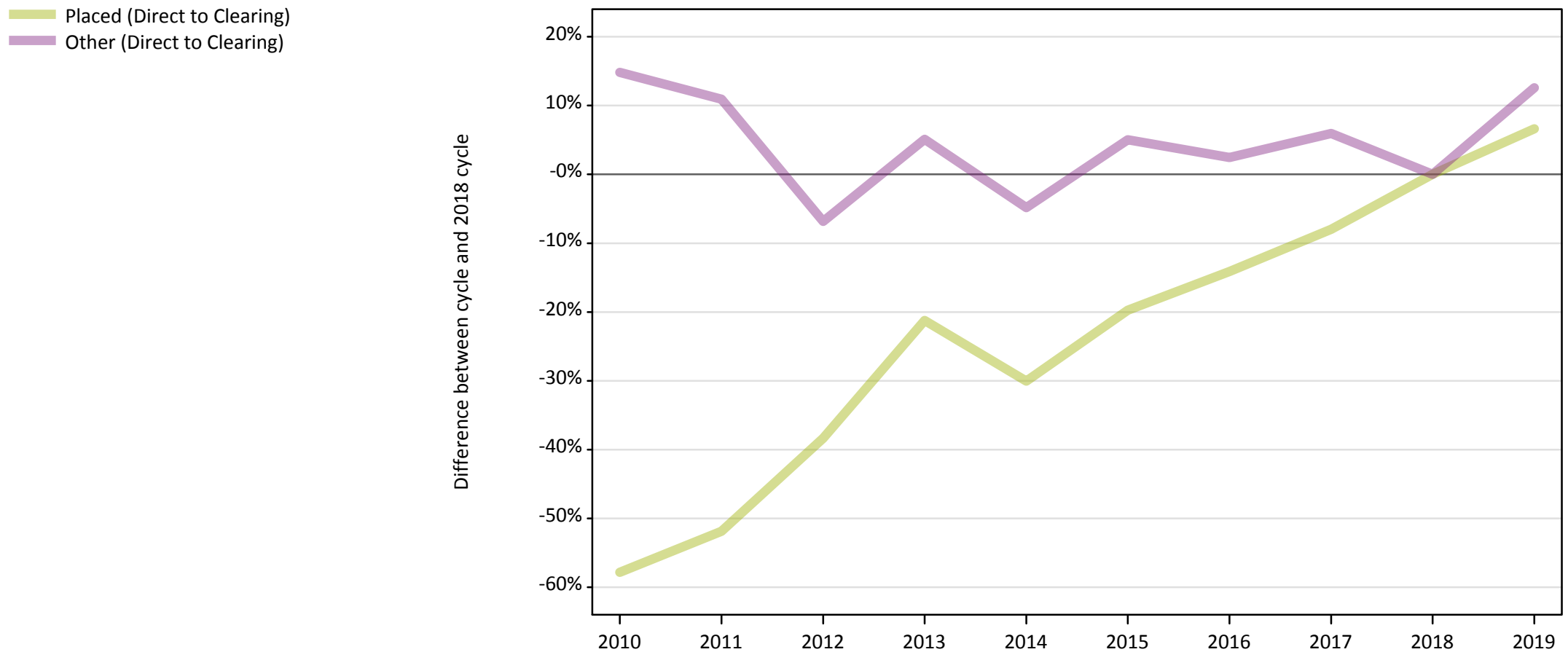
Applicants in unplaced states: difference between cycle and 2018 cycle

Applicant type	Status	2010	2011	2012	2013	2014	2015	2016	2017	2018	2019
Main scheme	Holding offer	6%	-6%	-6%	-2%	5%	3%	1%	2%	0%	3%
	Free to be placed in Clearing	77%	75%	48%	36%	40%	34%	30%	8%	0%	-1%

Note: The percentage change is not recorded in the above table for groups with fewer than 10 unplaced applicants in that cycle or in the 2018 cycle.

A.15 Direct to Clearing applicants from the UK: 13 days after A level results day

Direct to Clearing: difference between cycle and 2018 cycle



Note: The percentage change is not plotted in the above chart for groups with fewer than 30 placed applicants in any one cycle.

A.16 Direct to Clearing applicants from the UK: 13 days after A level results day

Direct to Clearing 13 days after A level results day

Applicant type	Status	2010	2011	2012	2013	2014	2015	2016	2017	2018	2019
Direct to Clearing	Placed (Direct to Clearing)	3,880	4,430	5,680	7,250	6,440	7,390	7,910	8,470	9,210	9,820
	Other (Direct to Clearing)	7,590	7,330	6,150	6,940	6,290	6,940	6,770	7,000	6,610	7,440

A.17 Direct to Clearing applicants from the UK: 13 days after A level results day

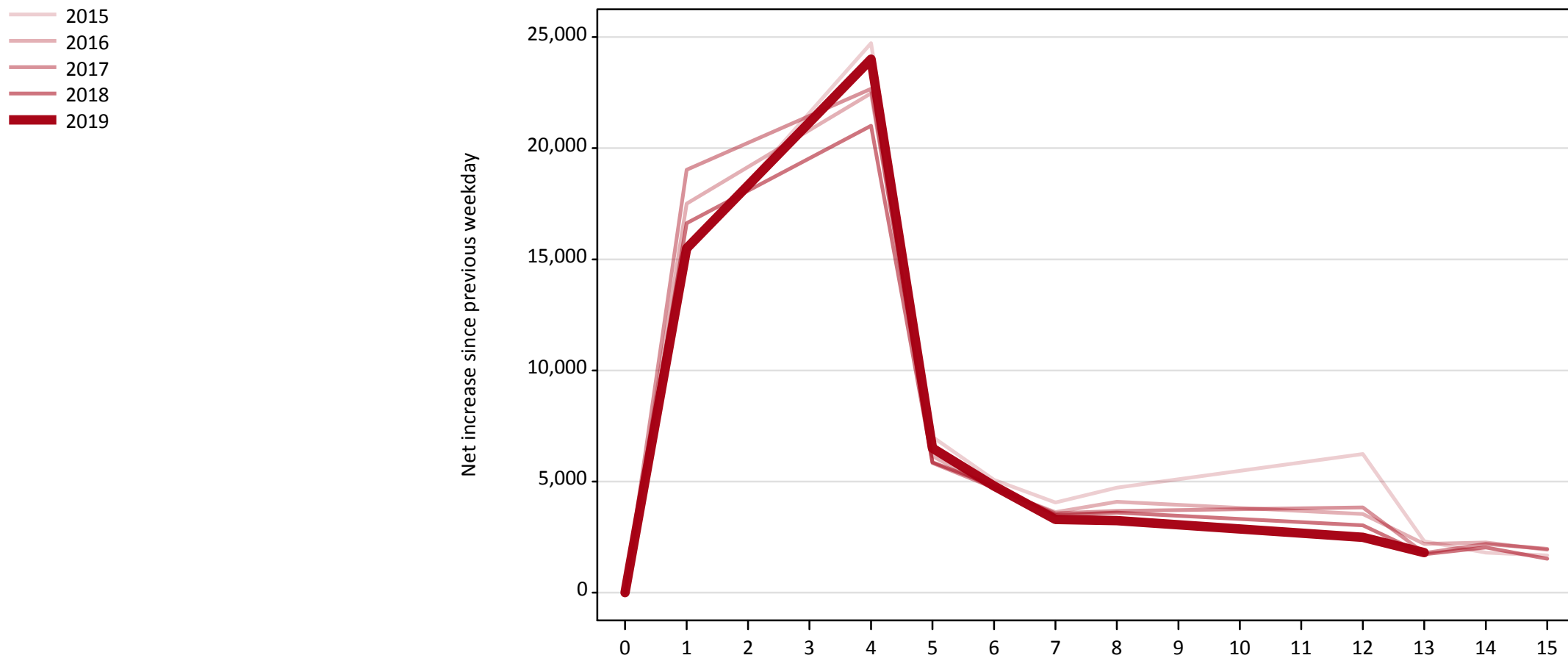
Direct to Clearing: difference between cycle and 2018 cycle

Applicant type	Status	2010	2011	2012	2013	2014	2015	2016	2017	2018	2019
Direct to Clearing	Placed (Direct to Clearing)	-58%	-52%	-38%	-21%	-30%	-20%	-14%	-8%	0%	7%
	Other (Direct to Clearing)	15%	11%	-7%	5%	-5%	5%	2%	6%	0%	13%

Note: The percentage change is not recorded in the above table for groups with fewer than 10 placed applicants in that cycle or in the 2018 cycle.

A.18 All Placed: Daily net change (from the UK)

Net increase since previous weekday (2019 cycle up to 13 days after A level results day)

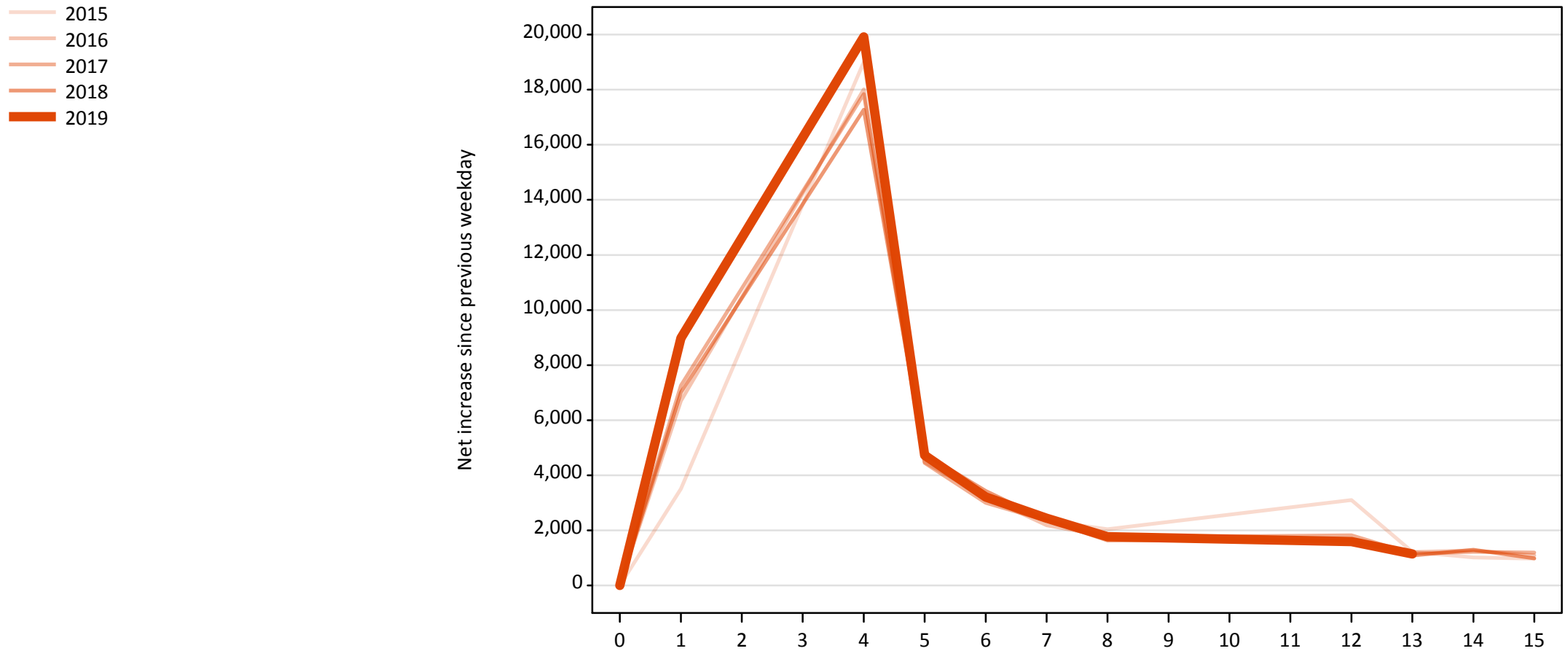


A.19 All Placed: Daily net change (from the UK)

Net increase since previous weekday (2019 cycle up to 13 days after A level results day)

Applicant status, days since A level results day		2015	2016	2017	2018	2019
All Placed	0	0	0	0	0	0
	1	15,350	17,510	19,030	16,620	15,490
	4	24,730	22,470	22,670	21,010	24,010
	5	7,020	6,140	5,840	5,870	6,510
	6	5,070	4,660	4,710	4,810	4,800
	7	4,060	3,630	3,570	3,500	3,300
	8	4,720	4,090	3,670	3,600	3,240
	12	6,240	3,530	3,840	3,020	2,490
	13	2,310	2,200	1,780	1,720	1,800
	14	1,810	2,260	2,200	2,030	
	15	1,680	1,920	1,970	1,530	

A.20 Placed through Clearing only: Daily net change (from the UK)
Net increase since previous weekday (2019 cycle up to 13 days after A level results day)

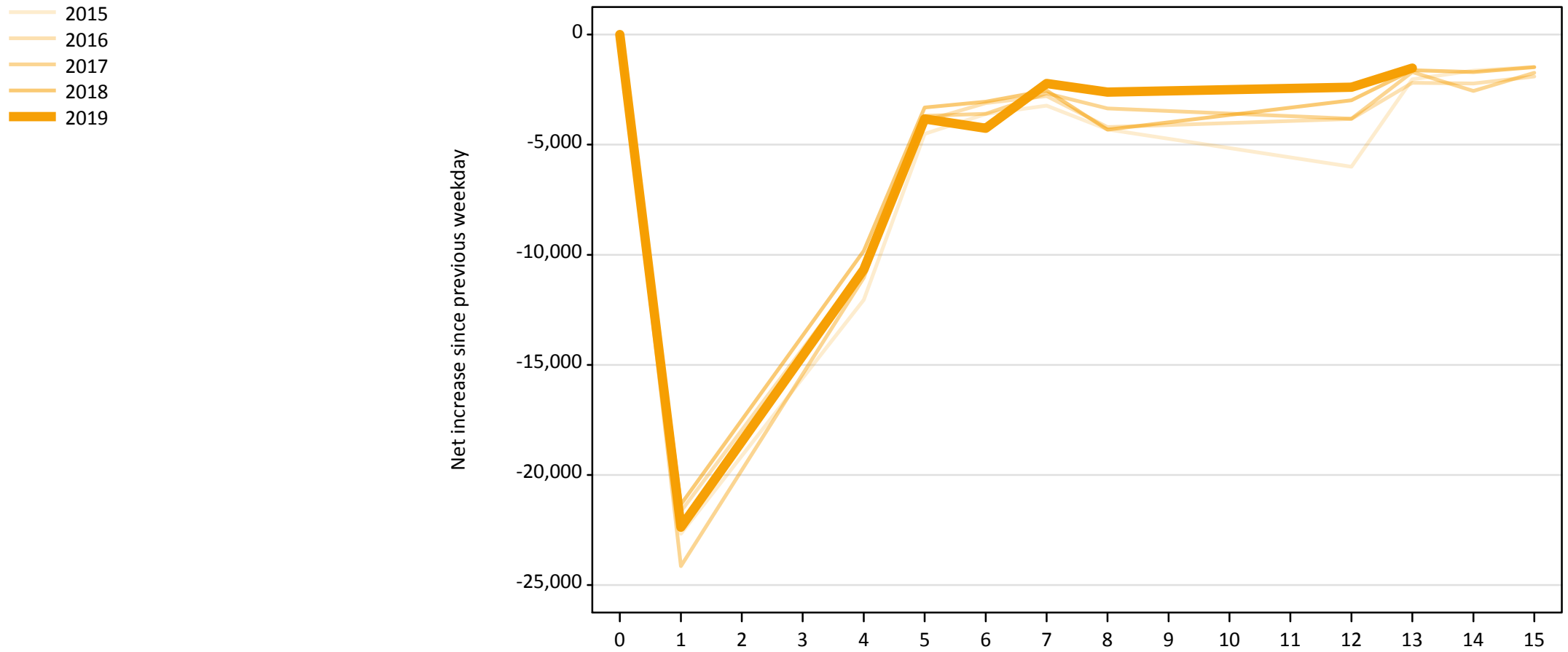


A.21 Placed through Clearing only: Daily net change (from the UK)

Net increase since previous weekday (2019 cycle up to 13 days after A level results day)

Applicant status, days since A level results day		2015	2016	2017	2018	2019
Placed through Clearing only	0	0	0	0	0	0
	1	3,510	6,700	7,260	7,010	8,980
	4	19,000	18,010	17,840	17,270	19,910
	5	4,820	4,470	4,450	4,770	4,730
	6	3,170	3,220	3,000	3,430	3,210
	7	2,350	2,180	2,360	2,370	2,440
	8	2,040	1,780	1,740	1,640	1,770
	12	3,100	1,570	1,820	1,640	1,600
	13	1,220	1,210	1,150	1,080	1,140
	14	1,020	1,270	1,220	1,300	
	15	980	1,090	1,200	980	

A.22 Holding Offer: Daily net change (from the UK)
Net increase since previous weekday (2019 cycle up to 13 days after A level results day)

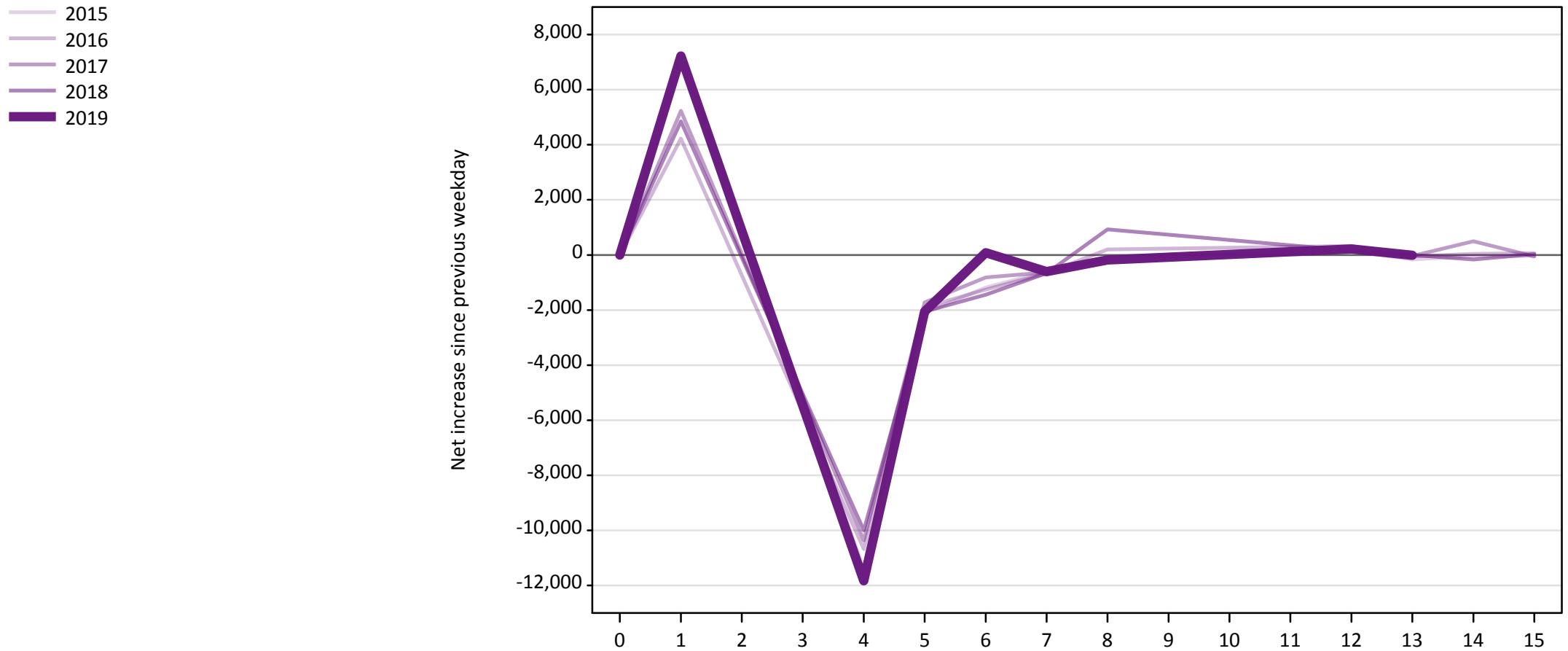


A.23 Holding Offer: Daily net change (from the UK)

Net increase since previous weekday (2019 cycle up to 13 days after A level results day)

Applicant status, days since A level results day		2015	2016	2017	2018	2019
Holding Offer	0	0	0	0	0	0
	1	-22,670	-21,650	-24,140	-21,330	-22,370
	4	-12,050	-10,570	-11,040	-9,830	-10,670
	5	-4,510	-3,920	-3,690	-3,320	-3,840
	6	-3,610	-3,110	-3,600	-3,040	-4,250
	7	-3,230	-2,790	-2,670	-2,540	-2,220
	8	-4,310	-4,200	-3,360	-4,320	-2,620
	12	-6,000	-3,830	-3,830	-2,980	-2,390
	13	-2,030	-2,190	-1,700	-1,620	-1,520
	14	-1,640	-2,220	-2,560	-1,700	
	15	-1,470	-1,900	-1,740	-1,480	

A.24 Free to be placed in Clearing: Daily net change (from the UK)
Net increase since previous weekday (2019 cycle up to 13 days after A level results day)



A.25 Free to be placed in Clearing: Daily net change (from the UK)

Net increase since previous weekday (2019 cycle up to 13 days after A level results day)

Applicant status, days since A level results day		2015	2016	2017	2018	2019
Free to be placed in Clearing	0	0	0	0	0	0
	1	7,260	4,220	5,230	4,850	7,220
	4	-11,400	-10,680	-10,370	-10,000	-11,830
	5	-2,100	-1,900	-1,730	-2,050	-2,060
	6	-1,180	-1,260	-820	-1,450	80
	7	-610	-660	-630	-660	-610
	8	-150	200	-130	920	-180
	12	150	320	190	160	220
	13	-170	-50	-40	0	-10
	14	-50	40	500	-160	
	15	-40	60	-50	30	