

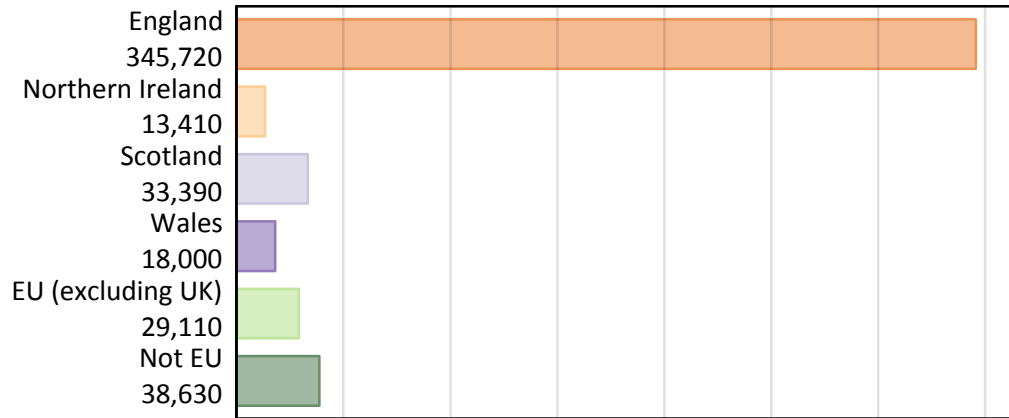
# Daily Clearing Analysis: Country

Analysis at 00:05 on Wednesday 28 August 2019 (13 days after A level results day)

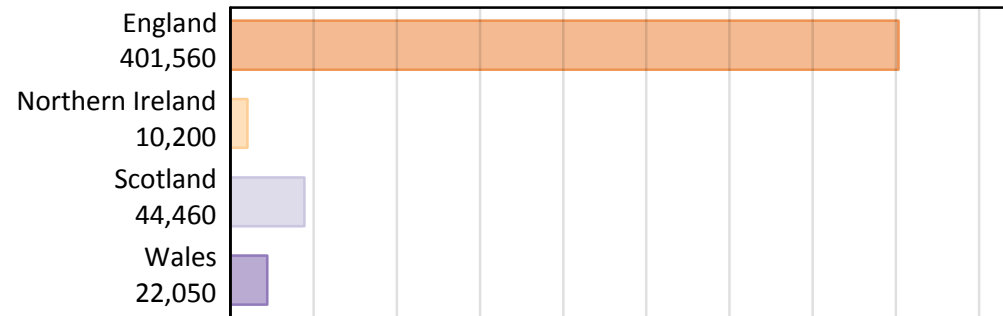
## B.1 Placed applicants by country of provider and domicile, 2019 cycle

Domicile of applicant	Country of provider				
	England	Northern Ireland	Scotland	Wales	UK
England	331,370	300	4,340	9,700	345,720
Northern Ireland	3,190	9,230	870	130	13,410
Scotland	1,490	20	31,850	40	33,390
Wales	7,760	10	130	10,100	18,000
EU (excluding UK)	23,880	410	3,880	940	29,110
Not EU	33,870	230	3,390	1,140	38,630
All	401,560	10,200	44,460	22,050	478,260

### B.2 Placed applicants by domicile group



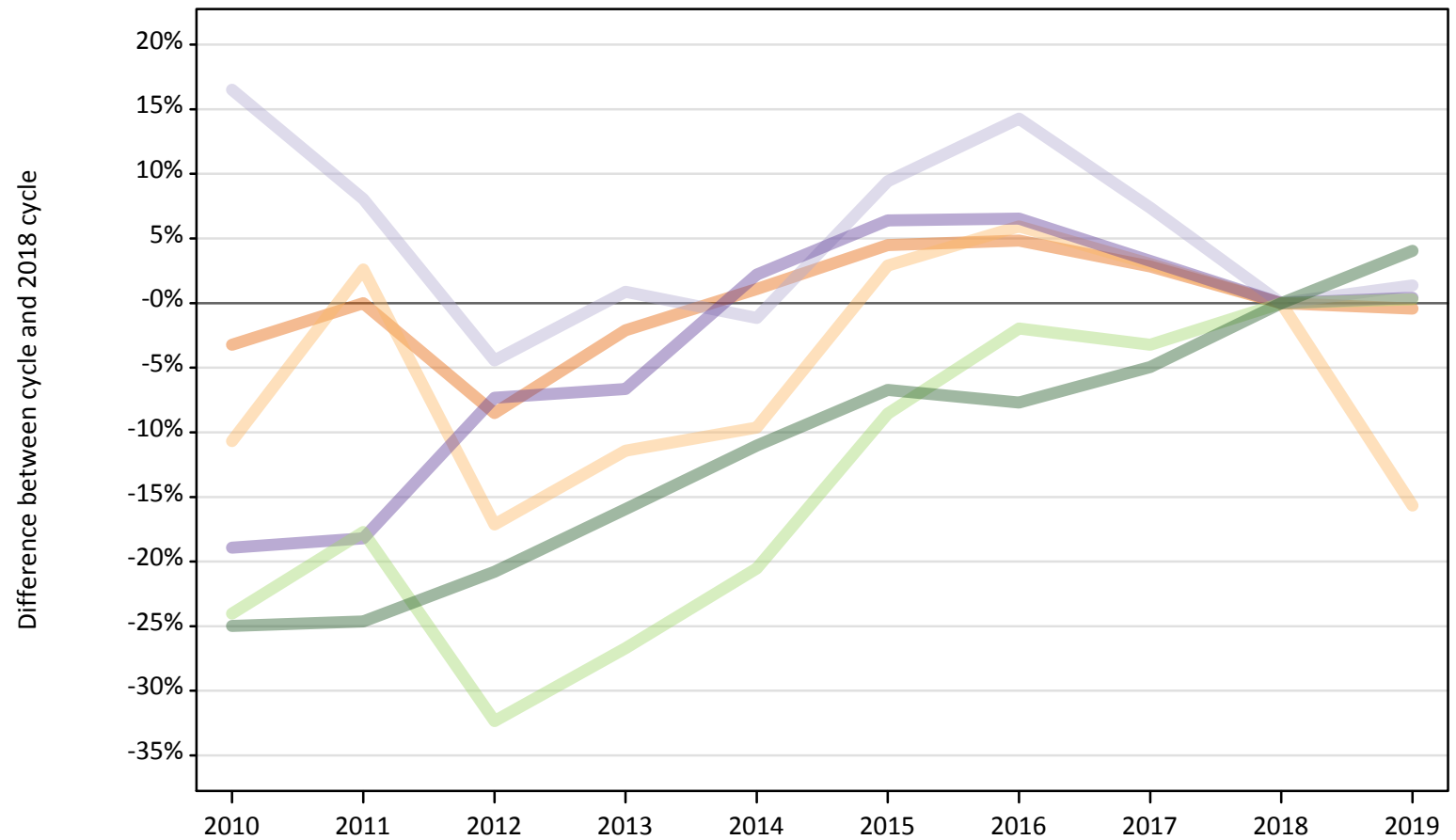
### B.3 Placed applicants by country of provider



### B.4 Placed applicants at 13 days after A level results day: providers in England

Selected applicant domiciles: difference between cycle and 2018 cycle (at 13 days after A level results day)

- England
- Northern Ireland
- Scotland
- Wales
- EU (excluding UK)
- Not EU



Note: The percentage change is not plotted in the above chart for groups with fewer than 30 placed applicants in any one cycle.

### B.5 Placed applicants at 13 days after A level results day: providers in England

Placed applicants by domicile (at 13 days after A level results day)

Domicile of applicant	2010	2011	2012	2013	2014	2015	2016	2017	2018	2019
England	322,030	332,740	304,460	325,750	336,400	347,660	348,850	342,180	332,760	331,370
Northern Ireland	3,380	3,880	3,130	3,350	3,420	3,890	4,010	3,900	3,780	3,190
Scotland	1,710	1,580	1,400	1,480	1,450	1,600	1,670	1,570	1,470	1,490
Wales	6,270	6,320	7,170	7,220	7,900	8,230	8,240	7,980	7,730	7,760
EU (excluding UK)	18,090	19,590	16,110	17,450	18,920	21,770	23,340	23,040	23,810	23,880
Not EU	24,430	24,530	25,790	27,370	28,970	30,370	30,050	30,950	32,560	33,870

### B.6 Placed applicants at 13 days after A level results day: providers in England

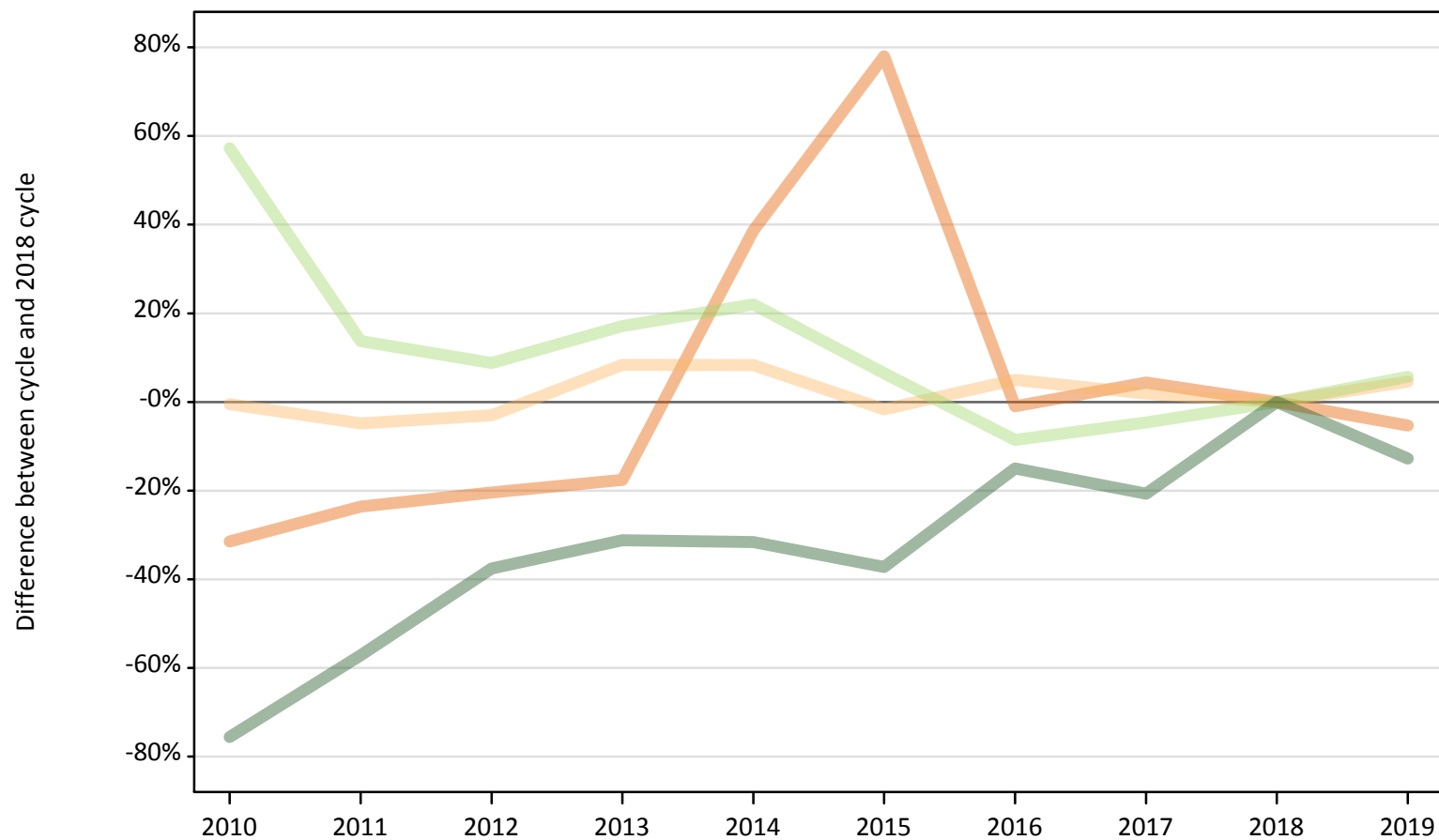
Selected applicant domiciles: difference between cycle and 2018 cycle (at 13 days after A level results day)

Domicile of applicant	2010	2011	2012	2013	2014	2015	2016	2017	2018	2019
England	-3%	-0%	-9%	-2%	1%	4%	5%	3%	0%	-0%
Northern Ireland	-11%	3%	-17%	-11%	-10%	3%	6%	3%	0%	-16%
Scotland	17%	8%	-4%	1%	-1%	9%	14%	7%	0%	1%
Wales	-19%	-18%	-7%	-7%	2%	6%	7%	3%	0%	0%
EU (excluding UK)	-24%	-18%	-32%	-27%	-21%	-9%	-2%	-3%	0%	0%
Not EU	-25%	-25%	-21%	-16%	-11%	-7%	-8%	-5%	0%	4%

Note: The percentage change is not recorded in the above table for groups with fewer than 10 placed applicants in that cycle or in the 2018 cycle.

**B.7 Placed applicants at 13 days after A level results day: providers in Northern Ireland**  
Selected applicant domiciles: difference between cycle and 2018 cycle (at 13 days after A level results day)

- England
- Northern Ireland
- Scotland
- Wales
- EU (excluding UK)
- Not EU



Note: The percentage change is not plotted in the above chart for groups with fewer than 30 placed applicants in any one cycle.

### B.8 Placed applicants at 13 days after A level results day: providers in Northern Ireland

Placed applicants by domicile (at 13 days after A level results day)

Domicile of applicant	2010	2011	2012	2013	2014	2015	2016	2017	2018	2019
England	220	240	250	260	440	570	320	330	320	300
Northern Ireland	8,780	8,390	8,550	9,560	9,550	8,680	9,260	8,990	8,820	9,230
Scotland	20	20	30	10	20	20	20	30	30	20
Wales	10	10	0	10	10	10	10	10	10	10
EU (excluding UK)	610	440	420	450	470	410	350	370	390	410
Not EU	70	110	170	180	180	170	230	210	270	230

### B.9 Placed applicants at 13 days after A level results day: providers in Northern Ireland

Selected applicant domiciles: difference between cycle and 2018 cycle (at 13 days after A level results day)

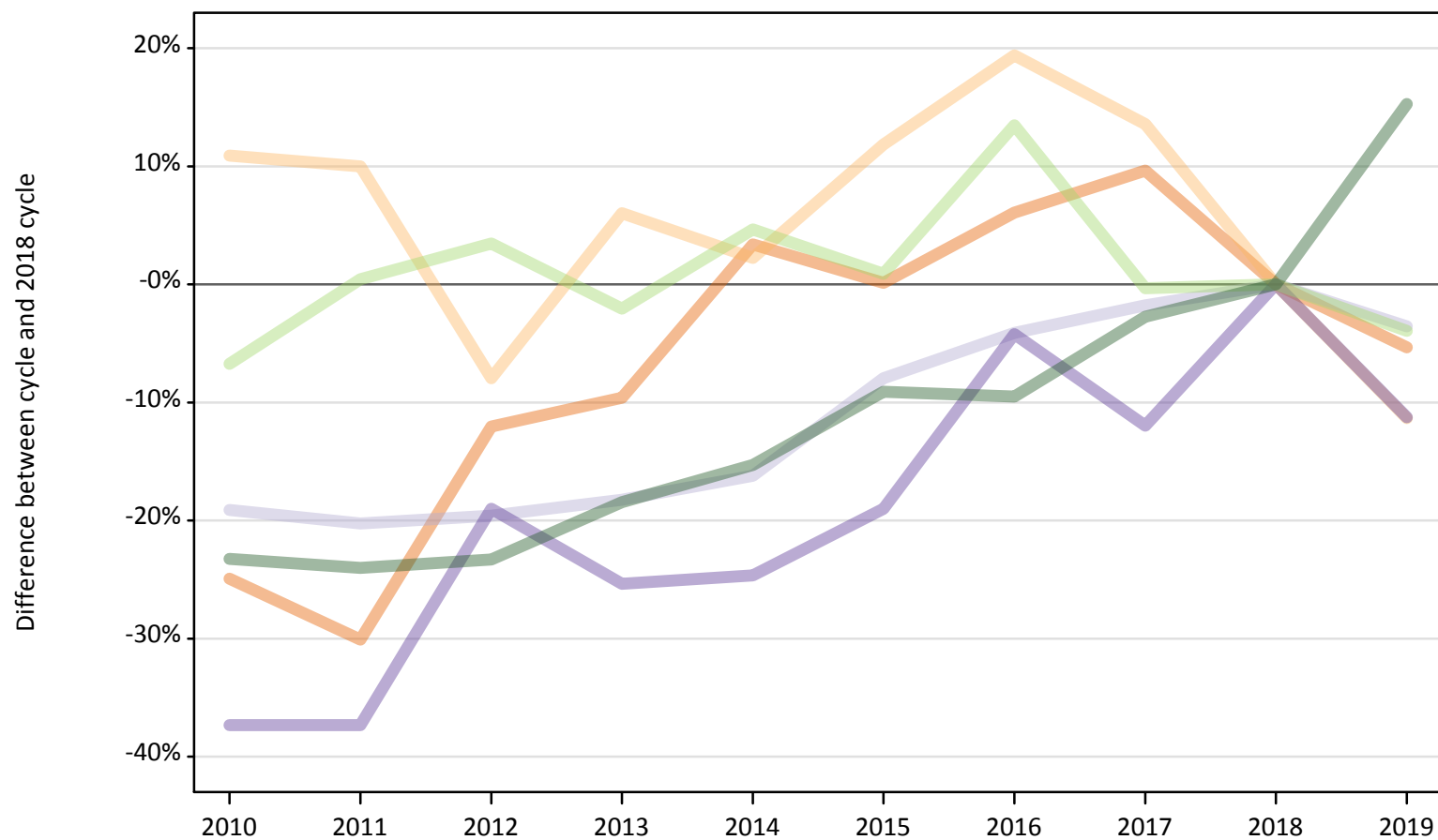
Domicile of applicant	2010	2011	2012	2013	2014	2015	2016	2017	2018	2019
England	-31%	-24%	-20%	-18%	39%	78%	-1%	4%	0%	-5%
Northern Ireland	-0%	-5%	-3%	8%	8%	-2%	5%	2%	0%	5%
Scotland	-12%	-27%	0%	-50%	-35%	-23%	-31%	19%	0%	-27%
Wales						30%	10%	40%	0%	20%
EU (excluding UK)	57%	14%	9%	17%	22%	6%	-9%	-5%	0%	6%
Not EU	-76%	-57%	-38%	-31%	-32%	-37%	-15%	-21%	0%	-13%

Note: The percentage change is not recorded in the above table for groups with fewer than 10 placed applicants in that cycle or in the 2018 cycle.

### B.10 Placed applicants at 13 days after A level results day: providers in Scotland

Selected applicant domiciles: difference between cycle and 2018 cycle (at 13 days after A level results day)

- England
- Northern Ireland
- Scotland
- Wales
- EU (excluding UK)
- Not EU



Note: The percentage change is not plotted in the above chart for groups with fewer than 30 placed applicants in any one cycle.

**B.11 Placed applicants at 13 days after A level results day: providers in Scotland**

Placed applicants by domicile (at 13 days after A level results day)

Domicile of applicant	2010	2011	2012	2013	2014	2015	2016	2017	2018	2019
England	3,440	3,210	4,030	4,150	4,740	4,590	4,870	5,030	4,590	4,340
Northern Ireland	1,090	1,080	900	1,040	1,000	1,100	1,170	1,110	980	870
Scotland	26,710	26,340	26,550	26,990	27,670	30,390	31,660	32,440	33,020	31,850
Wales	90	90	120	110	110	120	140	130	140	130
EU (excluding UK)	3,770	4,060	4,180	3,960	4,230	4,080	4,590	4,030	4,040	3,880
Not EU	2,260	2,240	2,260	2,400	2,490	2,680	2,660	2,860	2,940	3,390

**B.12 Placed applicants at 13 days after A level results day: providers in Scotland**

Selected applicant domiciles: difference between cycle and 2018 cycle (at 13 days after A level results day)

Domicile of applicant	2010	2011	2012	2013	2014	2015	2016	2017	2018	2019
England	-25%	-30%	-12%	-10%	3%	0%	6%	10%	0%	-5%
Northern Ireland	11%	10%	-8%	6%	2%	12%	19%	14%	0%	-11%
Scotland	-19%	-20%	-20%	-18%	-16%	-8%	-4%	-2%	0%	-4%
Wales	-37%	-37%	-19%	-25%	-25%	-19%	-4%	-12%	0%	-11%
EU (excluding UK)	-7%	0%	3%	-2%	5%	1%	13%	-0%	0%	-4%
Not EU	-23%	-24%	-23%	-18%	-15%	-9%	-10%	-3%	0%	15%

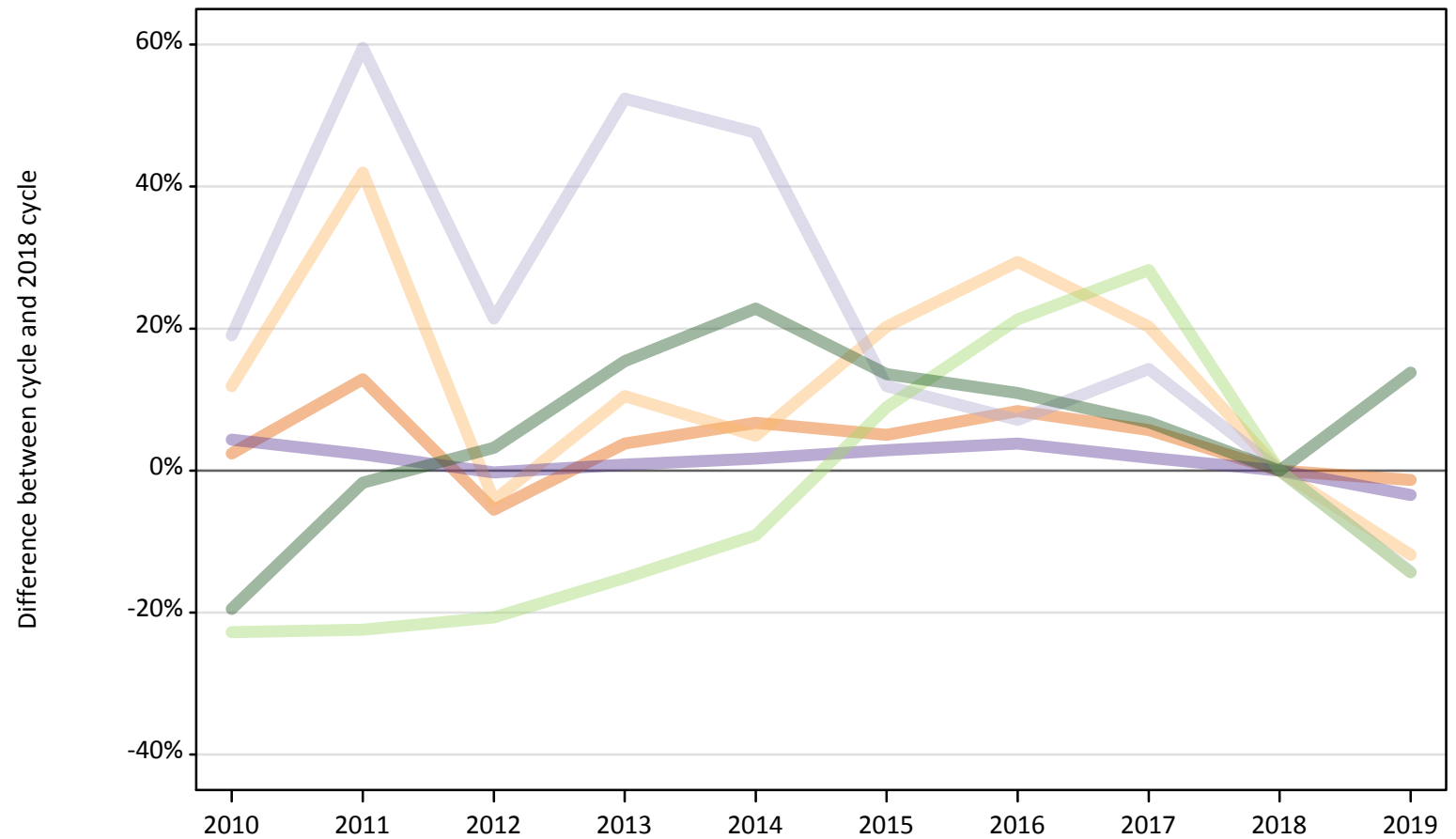
Note: The percentage change is not recorded in the above table for groups with fewer than 10 placed applicants in that cycle or in the 2018 cycle.



### B.13 Placed applicants at 13 days after A level results day: providers in Wales

Selected applicant domiciles: difference between cycle and 2018 cycle (at 13 days after A level results day)

- England
- Northern Ireland
- Scotland
- Wales
- EU (excluding UK)
- Not EU



Note: The percentage change is not plotted in the above chart for groups with fewer than 30 placed applicants in any one cycle.

**B.14 Placed applicants at 13 days after A level results day: providers in Wales**

Placed applicants by domicile (at 13 days after A level results day)

Domicile of applicant	2010	2011	2012	2013	2014	2015	2016	2017	2018	2019
England	10,070	11,100	9,290	10,210	10,490	10,330	10,660	10,390	9,830	9,700
Northern Ireland	160	200	140	160	150	170	190	170	140	130
Scotland	50	70	50	60	60	50	50	50	40	40
Wales	10,920	10,700	10,430	10,550	10,640	10,770	10,860	10,650	10,460	10,100
EU (excluding UK)	850	850	870	930	1,000	1,200	1,330	1,410	1,100	940
Not EU	810	980	1,030	1,150	1,230	1,140	1,110	1,070	1,000	1,140

**B.15 Placed applicants at 13 days after A level results day: providers in Wales**

Selected applicant domiciles: difference between cycle and 2018 cycle (at 13 days after A level results day)

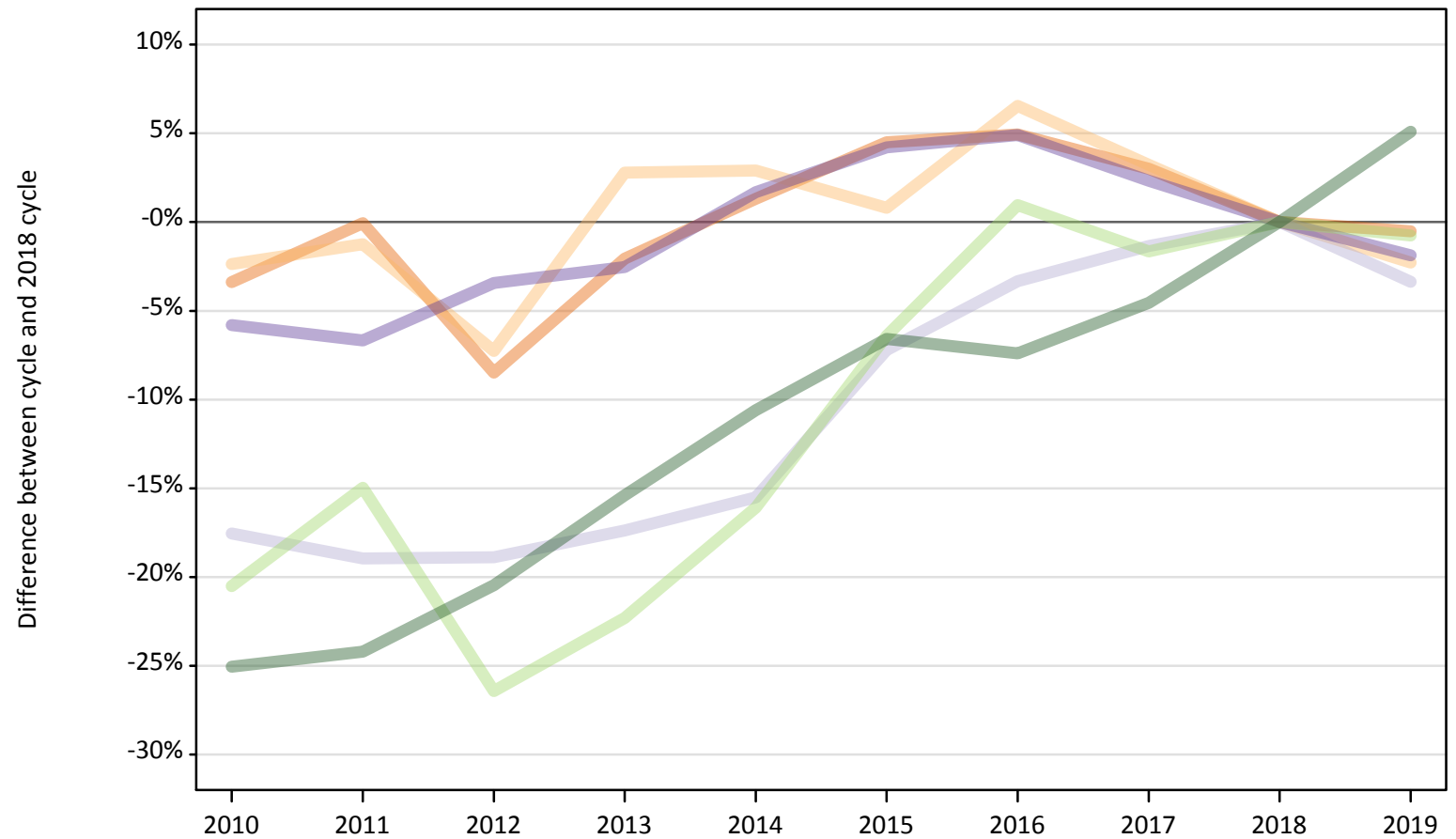
Domicile of applicant	2010	2011	2012	2013	2014	2015	2016	2017	2018	2019
England	2%	13%	-6%	4%	7%	5%	8%	6%	0%	-1%
Northern Ireland	12%	42%	-4%	10%	5%	20%	29%	20%	0%	-12%
Scotland	19%	60%	21%	52%	48%	12%	7%	14%	0%	-14%
Wales	4%	2%	-0%	1%	2%	3%	4%	2%	0%	-3%
EU (excluding UK)	-23%	-22%	-21%	-15%	-9%	9%	21%	28%	0%	-14%
Not EU	-20%	-2%	3%	15%	23%	14%	11%	7%	0%	14%

Note: The percentage change is not recorded in the above table for groups with fewer than 10 placed applicants in that cycle or in the 2018 cycle.

### B.16 Placed applicants at 13 days after A level results day: providers in the UK

Selected applicant domiciles: difference between cycle and 2018 cycle (at 13 days after A level results day)

- England
- Northern Ireland
- Scotland
- Wales
- EU (excluding UK)
- Not EU



Note: The percentage change is not plotted in the above chart for groups with fewer than 30 placed applicants in any one cycle.

**B.17 Placed applicants at 13 days after A level results day: providers in the UK**

Placed applicants by domicile (at 13 days after A level results day)

Domicile of applicant	2010	2011	2012	2013	2014	2015	2016	2017	2018	2019
England	335,760	347,290	318,030	340,360	352,080	363,150	364,680	357,940	347,500	345,720
Northern Ireland	13,400	13,550	12,730	14,110	14,120	13,840	14,620	14,170	13,720	13,410
Scotland	28,490	28,000	28,030	28,550	29,190	32,060	33,400	34,090	34,550	33,390
Wales	17,280	17,120	17,720	17,880	18,660	19,120	19,250	18,770	18,350	18,000
EU (excluding UK)	23,310	24,940	21,580	22,790	24,610	27,450	29,610	28,850	29,330	29,110
Not EU	27,550	27,870	29,240	31,100	32,870	34,340	34,050	35,090	36,760	38,630

**B.18 Placed applicants at 13 days after A level results day: providers in the UK**

Selected applicant domiciles: difference between cycle and 2018 cycle (at 13 days after A level results day)

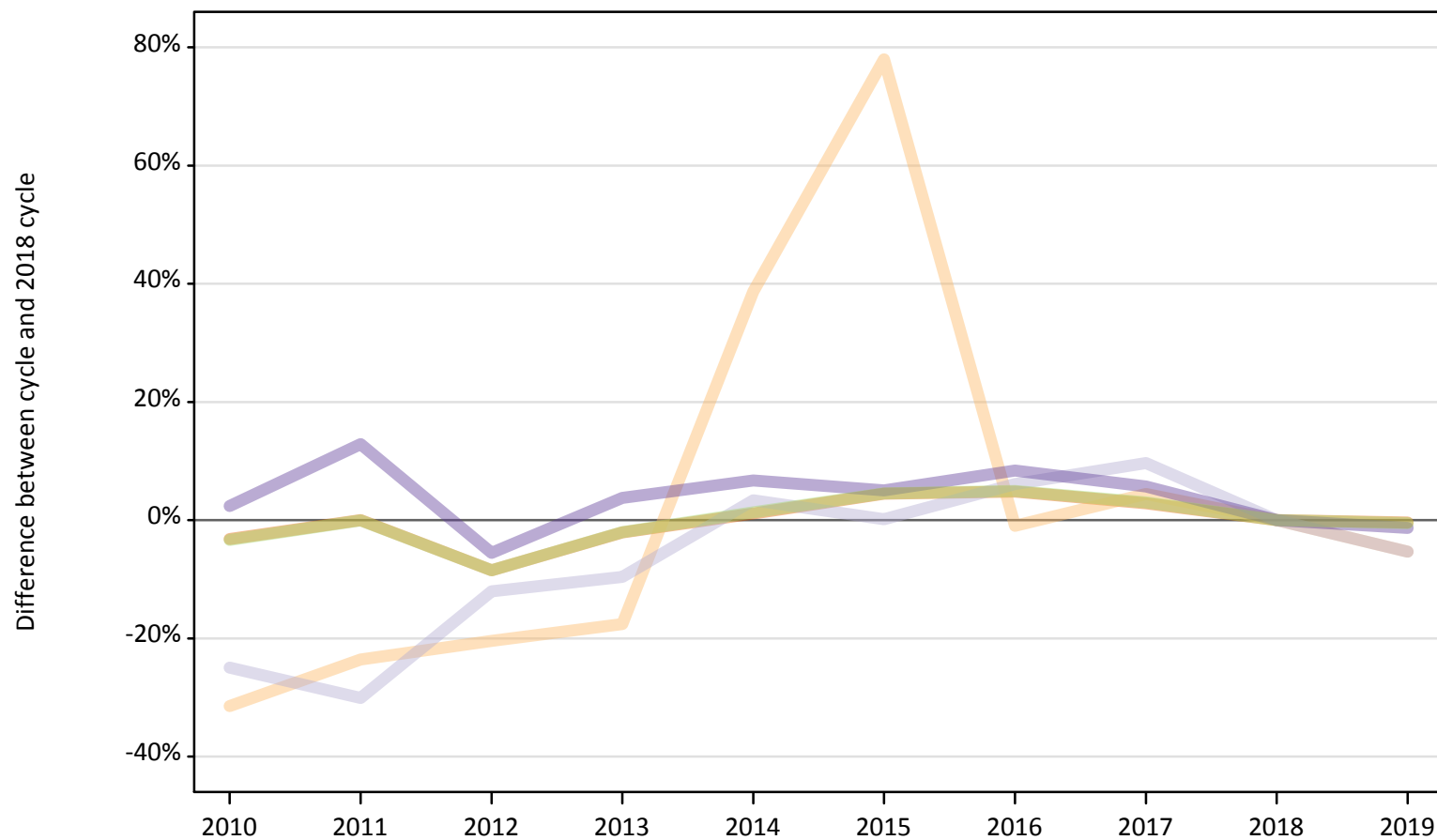
Domicile of applicant	2010	2011	2012	2013	2014	2015	2016	2017	2018	2019
England	-3%	-0%	-8%	-2%	1%	5%	5%	3%	0%	-1%
Northern Ireland	-2%	-1%	-7%	3%	3%	1%	7%	3%	0%	-2%
Scotland	-18%	-19%	-19%	-17%	-16%	-7%	-3%	-1%	0%	-3%
Wales	-6%	-7%	-3%	-3%	2%	4%	5%	2%	0%	-2%
EU (excluding UK)	-21%	-15%	-26%	-22%	-16%	-6%	1%	-2%	0%	-1%
Not EU	-25%	-24%	-20%	-15%	-11%	-7%	-7%	-5%	0%	5%

Note: The percentage change is not recorded in the above table for groups with fewer than 10 placed applicants in that cycle or in the 2018 cycle.

### B.19 Placed applicants at 13 days after A level results day: domiciled in England

Selected provider countries: difference between cycle and 2018 cycle (at 13 days after A level results day)

- England
- Northern Ireland
- Scotland
- Wales
- UK



Note: The percentage change is not plotted in the above chart for groups with fewer than 30 placed applicants in any one cycle.

## B.20 Placed applicants at 13 days after A level results day: domiciled in England

Placed applicants by provider country (at 13 days after A level results day)

Country of provider	2010	2011	2012	2013	2014	2015	2016	2017	2018	2019
England	322,030	332,740	304,460	325,750	336,400	347,660	348,850	342,180	332,760	331,370
Northern Ireland	220	240	250	260	440	570	320	330	320	300
Scotland	3,440	3,210	4,030	4,150	4,740	4,590	4,870	5,030	4,590	4,340
Wales	10,070	11,100	9,290	10,210	10,490	10,330	10,660	10,390	9,830	9,700
UK	335,760	347,290	318,030	340,360	352,080	363,150	364,680	357,940	347,500	345,720

## B.21 Placed applicants at 13 days after A level results day: domiciled in England

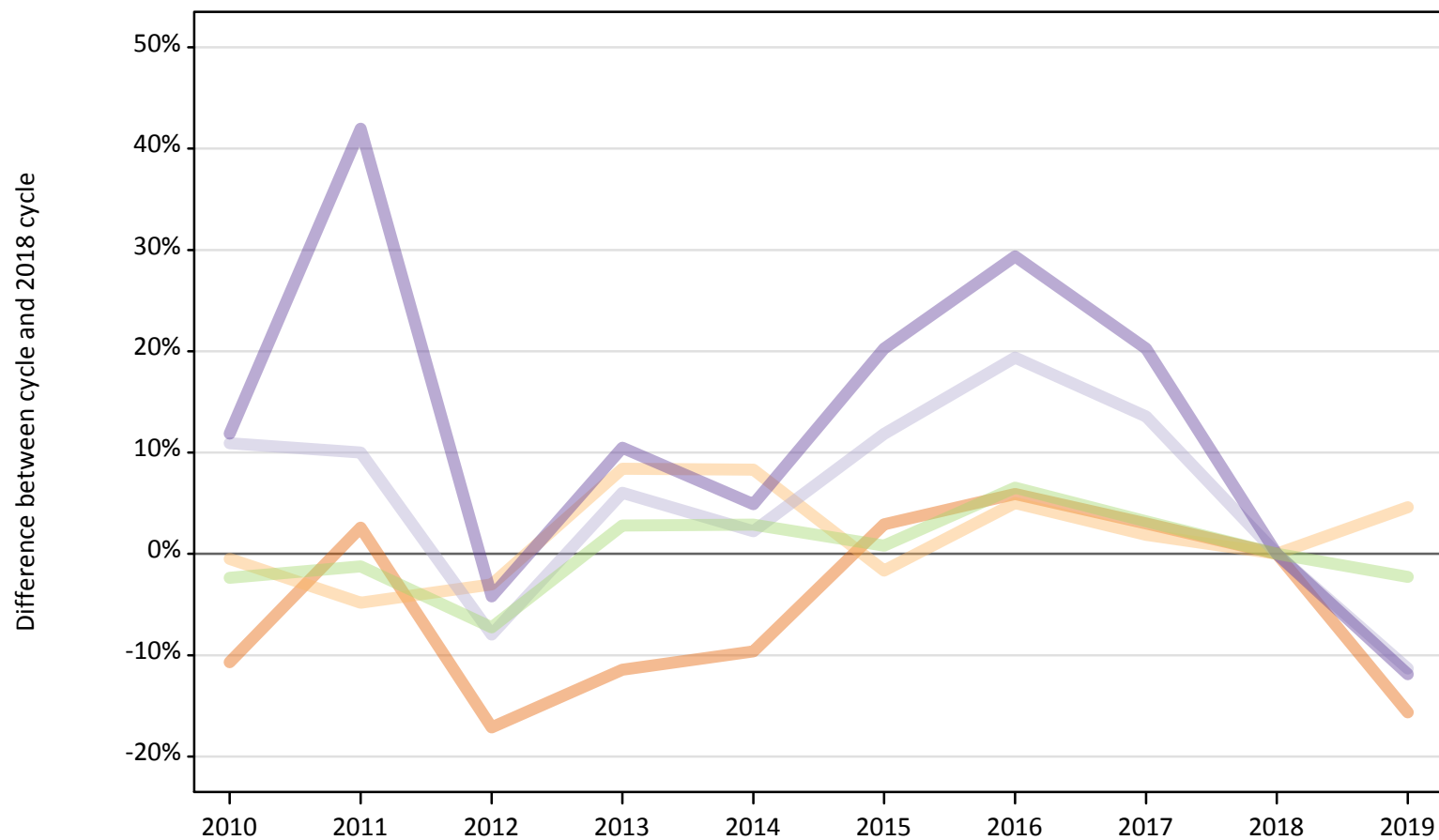
Selected provider countries: difference between cycle and 2018 cycle (at 13 days after A level results day)

Country of provider	2010	2011	2012	2013	2014	2015	2016	2017	2018	2019
England	-3%	-0%	-9%	-2%	1%	4%	5%	3%	0%	-0%
Northern Ireland	-31%	-24%	-20%	-18%	39%	78%	-1%	4%	0%	-5%
Scotland	-25%	-30%	-12%	-10%	3%	0%	6%	10%	0%	-5%
Wales	2%	13%	-6%	4%	7%	5%	8%	6%	0%	-1%
UK	-3%	-0%	-8%	-2%	1%	5%	5%	3%	0%	-1%

Note: The percentage change is not recorded in the above table for groups with fewer than 10 placed applicants in that cycle or in the 2018 cycle.

**B.22 Placed applicants at 13 days after A level results day: domiciled in Northern Ireland**  
Selected provider countries: difference between cycle and 2018 cycle (at 13 days after A level results day)

- England
- Northern Ireland
- Scotland
- Wales
- UK



Note: The percentage change is not plotted in the above chart for groups with fewer than 30 placed applicants in any one cycle.

### B.23 Placed applicants at 13 days after A level results day: domiciled in Northern Ireland

Placed applicants by provider country (at 13 days after A level results day)

Country of provider	2010	2011	2012	2013	2014	2015	2016	2017	2018	2019
England	3,380	3,880	3,130	3,350	3,420	3,890	4,010	3,900	3,780	3,190
Northern Ireland	8,780	8,390	8,550	9,560	9,550	8,680	9,260	8,990	8,820	9,230
Scotland	1,090	1,080	900	1,040	1,000	1,100	1,170	1,110	980	870
Wales	160	200	140	160	150	170	190	170	140	130
UK	13,400	13,550	12,730	14,110	14,120	13,840	14,620	14,170	13,720	13,410

### B.24 Placed applicants at 13 days after A level results day: domiciled in Northern Ireland

Selected provider countries: difference between cycle and 2018 cycle (at 13 days after A level results day)

Country of provider	2010	2011	2012	2013	2014	2015	2016	2017	2018	2019
England	-11%	3%	-17%	-11%	-10%	3%	6%	3%	0%	-16%
Northern Ireland	-0%	-5%	-3%	8%	8%	-2%	5%	2%	0%	5%
Scotland	11%	10%	-8%	6%	2%	12%	19%	14%	0%	-11%
Wales	12%	42%	-4%	10%	5%	20%	29%	20%	0%	-12%
UK	-2%	-1%	-7%	3%	3%	1%	7%	3%	0%	-2%

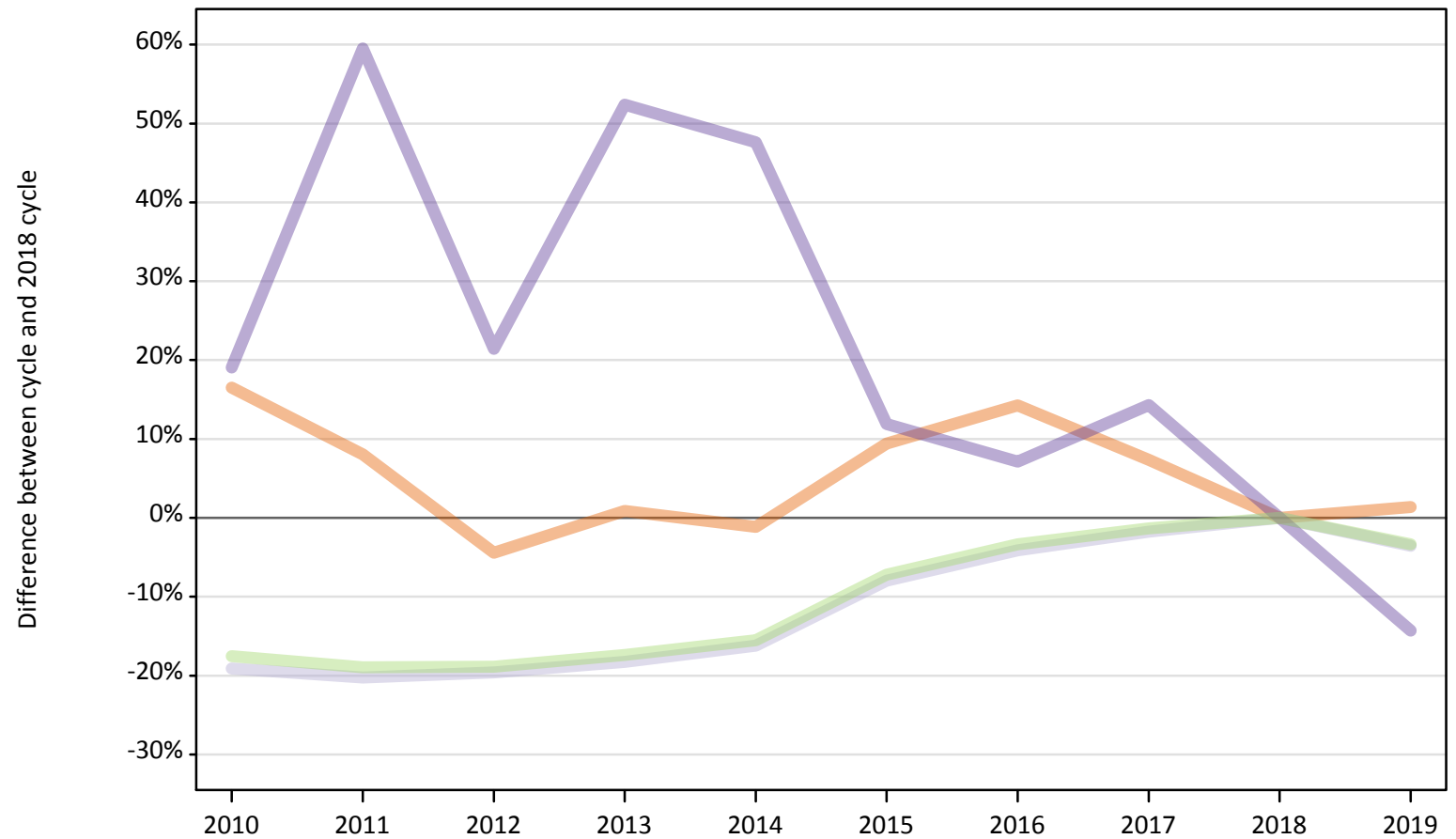
Note: The percentage change is not recorded in the above table for groups with fewer than 10 placed applicants in that cycle or in the 2018 cycle.



### B.25 Placed applicants at 13 days after A level results day: domiciled in Scotland

Selected provider countries: difference between cycle and 2018 cycle (at 13 days after A level results day)

- England
- Northern Ireland
- Scotland
- Wales
- UK



Note: The percentage change is not plotted in the above chart for groups with fewer than 30 placed applicants in any one cycle.

**B.26 Placed applicants at 13 days after A level results day: domiciled in Scotland**

Placed applicants by provider country (at 13 days after A level results day)

Country of provider	2010	2011	2012	2013	2014	2015	2016	2017	2018	2019
England	1,710	1,580	1,400	1,480	1,450	1,600	1,670	1,570	1,470	1,490
Northern Ireland	20	20	30	10	20	20	20	30	30	20
Scotland	26,710	26,340	26,550	26,990	27,670	30,390	31,660	32,440	33,020	31,850
Wales	50	70	50	60	60	50	50	50	40	40
UK	28,490	28,000	28,030	28,550	29,190	32,060	33,400	34,090	34,550	33,390

**B.27 Placed applicants at 13 days after A level results day: domiciled in Scotland**

Selected provider countries: difference between cycle and 2018 cycle (at 13 days after A level results day)

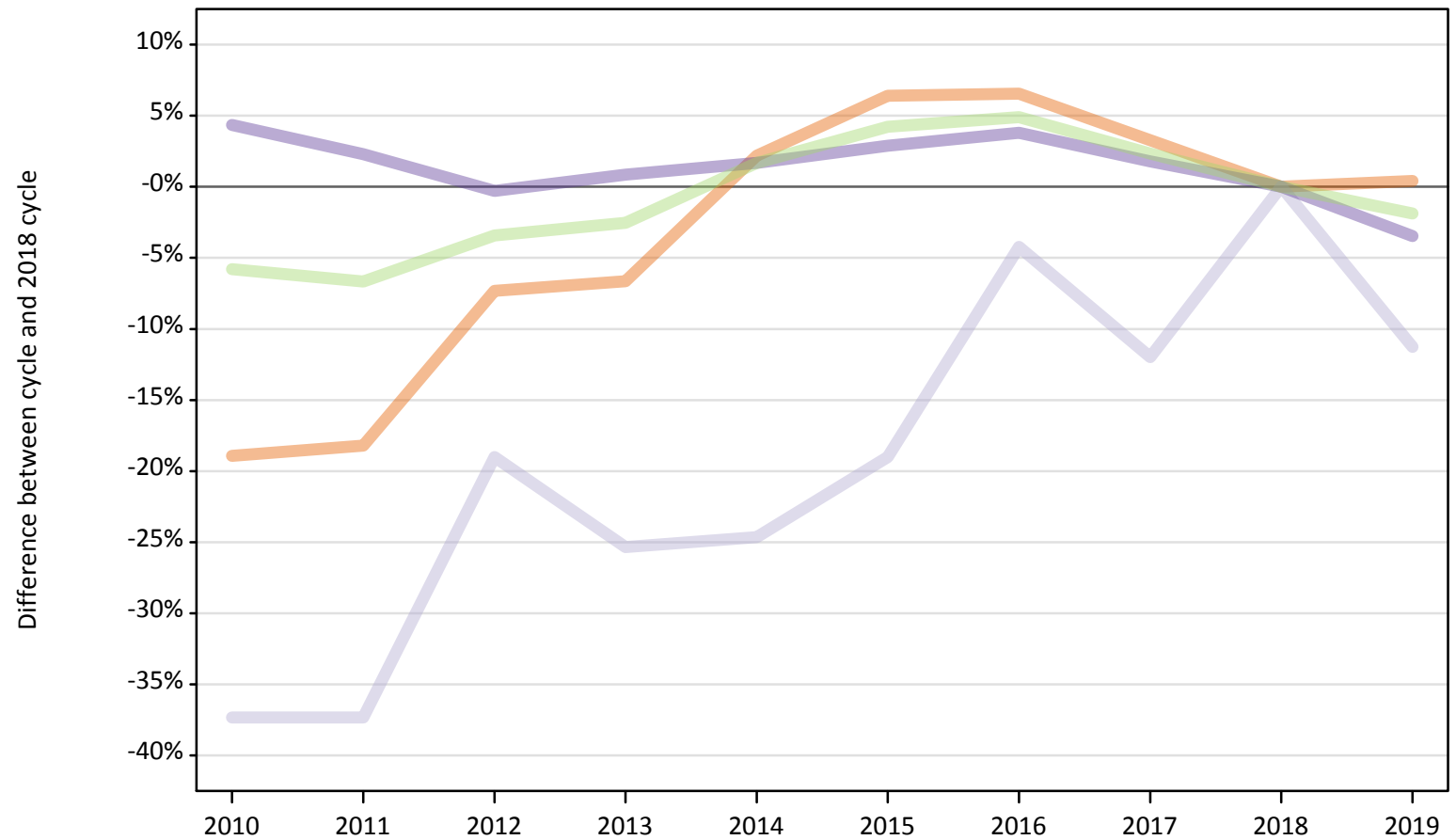
Country of provider	2010	2011	2012	2013	2014	2015	2016	2017	2018	2019
England	17%	8%	-4%	1%	-1%	9%	14%	7%	0%	1%
Northern Ireland	-12%	-27%	0%	-50%	-35%	-23%	-31%	19%	0%	-27%
Scotland	-19%	-20%	-20%	-18%	-16%	-8%	-4%	-2%	0%	-4%
Wales	19%	60%	21%	52%	48%	12%	7%	14%	0%	-14%
UK	-18%	-19%	-19%	-17%	-16%	-7%	-3%	-1%	0%	-3%

Note: The percentage change is not recorded in the above table for groups with fewer than 10 placed applicants in that cycle or in the 2018 cycle.

### B.28 Placed applicants at 13 days after A level results day: domiciled in Wales

Selected provider countries: difference between cycle and 2018 cycle (at 13 days after A level results day)

- England
- Northern Ireland
- Scotland
- Wales
- UK



Note: The percentage change is not plotted in the above chart for groups with fewer than 30 placed applicants in any one cycle.

**B.29 Placed applicants at 13 days after A level results day: domiciled in Wales**

Placed applicants by provider country (at 13 days after A level results day)

Country of provider	2010	2011	2012	2013	2014	2015	2016	2017	2018	2019
England	6,270	6,320	7,170	7,220	7,900	8,230	8,240	7,980	7,730	7,760
Northern Ireland	10	10	0	10	10	10	10	10	10	10
Scotland	90	90	120	110	110	120	140	130	140	130
Wales	10,920	10,700	10,430	10,550	10,640	10,770	10,860	10,650	10,460	10,100
UK	17,280	17,120	17,720	17,880	18,660	19,120	19,250	18,770	18,350	18,000

**B.30 Placed applicants at 13 days after A level results day: domiciled in Wales**

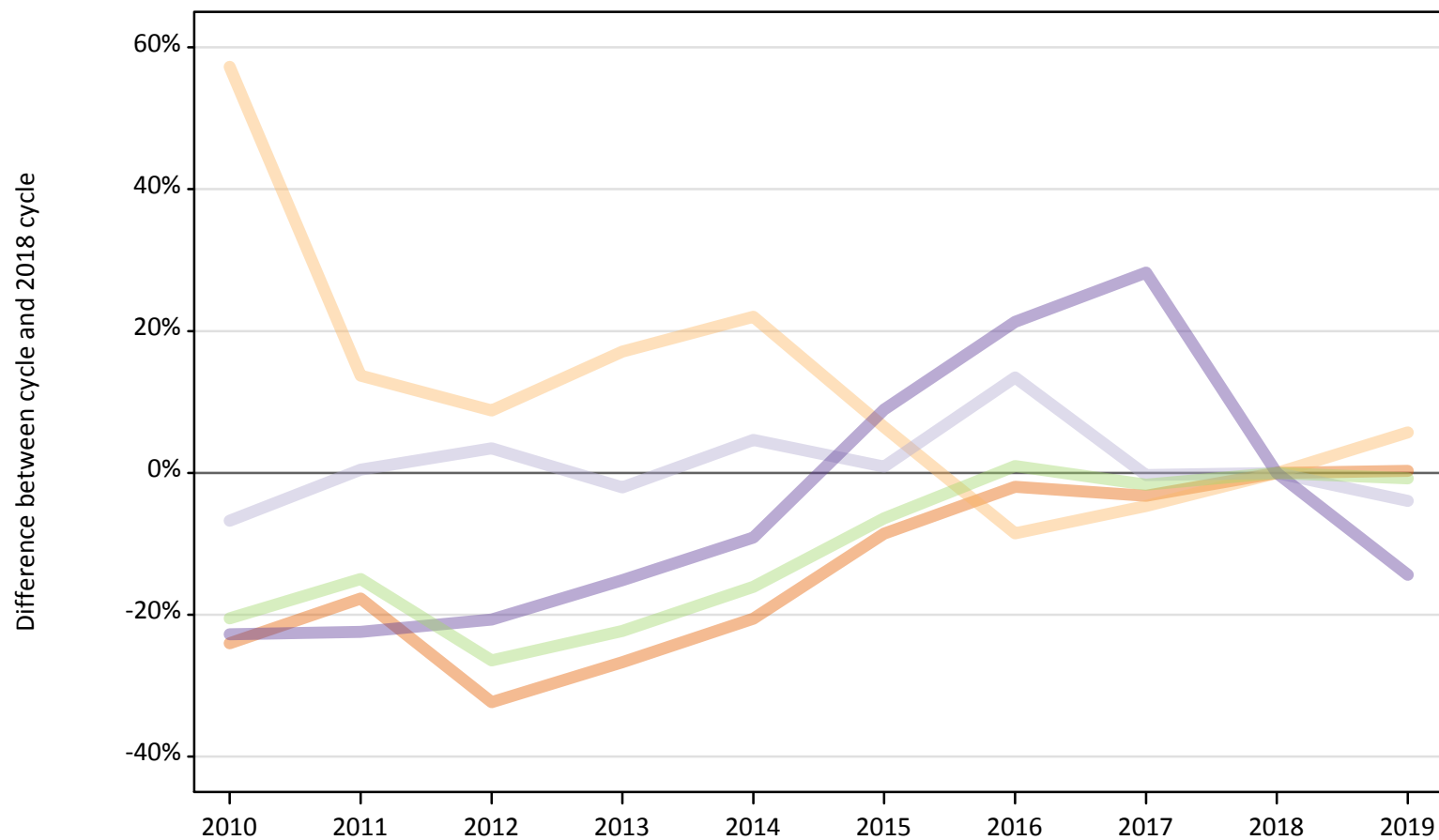
Selected provider countries: difference between cycle and 2018 cycle (at 13 days after A level results day)

Country of provider	2010	2011	2012	2013	2014	2015	2016	2017	2018	2019
England	-19%	-18%	-7%	-7%	2%	6%	7%	3%	0%	0%
Northern Ireland						30%	10%	40%	0%	20%
Scotland	-37%	-37%	-19%	-25%	-25%	-19%	-4%	-12%	0%	-11%
Wales	4%	2%	-0%	1%	2%	3%	4%	2%	0%	-3%
UK	-6%	-7%	-3%	-3%	2%	4%	5%	2%	0%	-2%

Note: The percentage change is not recorded in the above table for groups with fewer than 10 placed applicants in that cycle or in the 2018 cycle.

**B.31 Placed applicants at 13 days after A level results day: domiciled in EU (excluding UK)**  
Selected provider countries: difference between cycle and 2018 cycle (at 13 days after A level results day)

- England
- Northern Ireland
- Scotland
- Wales
- UK



Note: The percentage change is not plotted in the above chart for groups with fewer than 30 placed applicants in any one cycle.

### B.32 Placed applicants at 13 days after A level results day: domiciled in EU (excluding UK)

Placed applicants by provider country (at 13 days after A level results day)

Country of provider	2010	2011	2012	2013	2014	2015	2016	2017	2018	2019
England	18,090	19,590	16,110	17,450	18,920	21,770	23,340	23,040	23,810	23,880
Northern Ireland	610	440	420	450	470	410	350	370	390	410
Scotland	3,770	4,060	4,180	3,960	4,230	4,080	4,590	4,030	4,040	3,880
Wales	850	850	870	930	1,000	1,200	1,330	1,410	1,100	940
UK	23,310	24,940	21,580	22,790	24,610	27,450	29,610	28,850	29,330	29,110

### B.33 Placed applicants at 13 days after A level results day: domiciled in EU (excluding UK)

Selected provider countries: difference between cycle and 2018 cycle (at 13 days after A level results day)

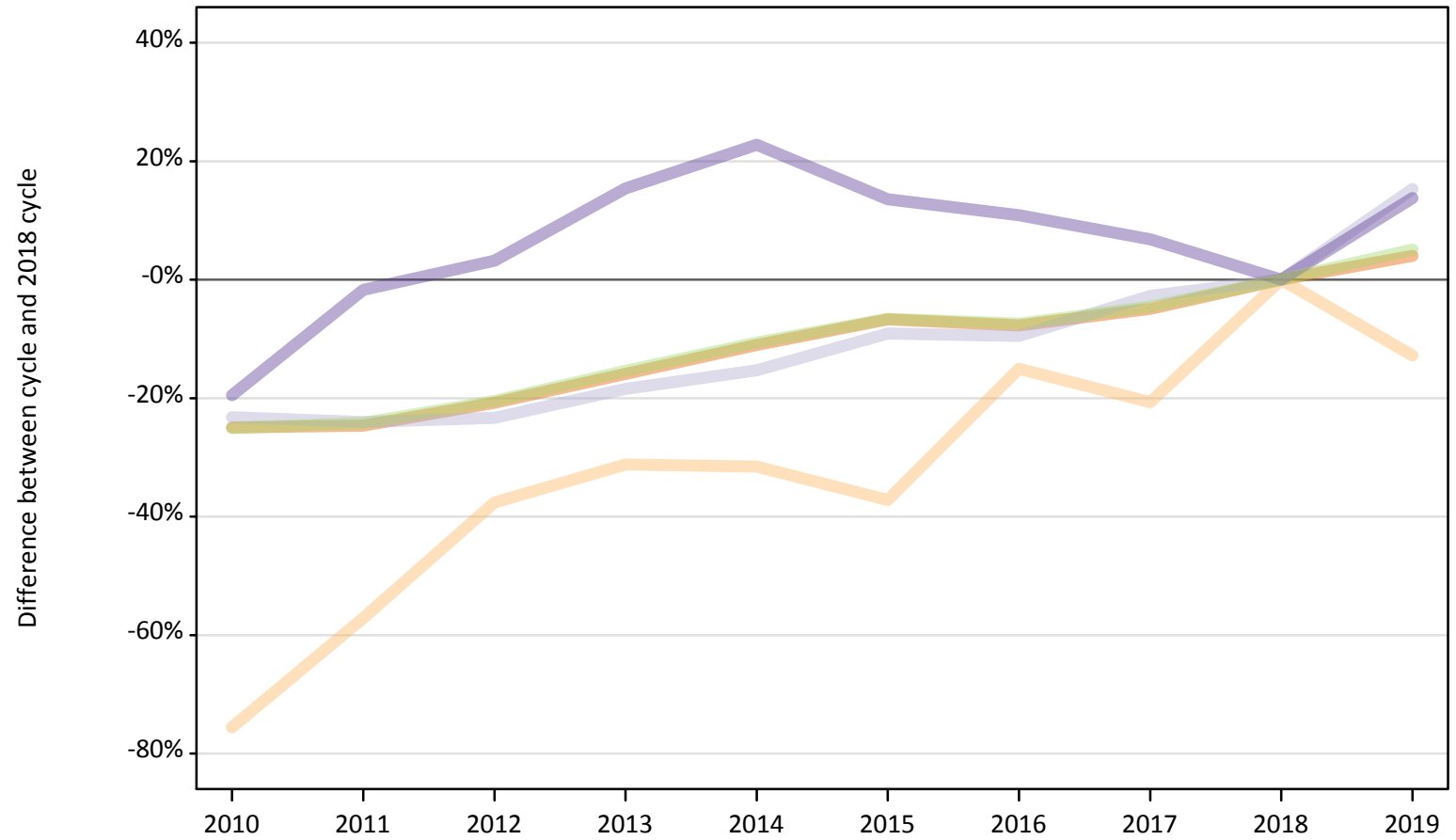
Country of provider	2010	2011	2012	2013	2014	2015	2016	2017	2018	2019
England	-24%	-18%	-32%	-27%	-21%	-9%	-2%	-3%	0%	0%
Northern Ireland	57%	14%	9%	17%	22%	6%	-9%	-5%	0%	6%
Scotland	-7%	0%	3%	-2%	5%	1%	13%	-0%	0%	-4%
Wales	-23%	-22%	-21%	-15%	-9%	9%	21%	28%	0%	-14%
UK	-21%	-15%	-26%	-22%	-16%	-6%	1%	-2%	0%	-1%

Note: The percentage change is not recorded in the above table for groups with fewer than 10 placed applicants in that cycle or in the 2018 cycle.

### B.34 Placed applicants at 13 days after A level results day: domiciled in Not EU

Selected provider countries: difference between cycle and 2018 cycle (at 13 days after A level results day)

- England
- Northern Ireland
- Scotland
- Wales
- UK



Note: The percentage change is not plotted in the above chart for groups with fewer than 30 placed applicants in any one cycle.

### B.35 Placed applicants at 13 days after A level results day: domiciled in Not EU

Placed applicants by provider country (at 13 days after A level results day)

Country of provider	2010	2011	2012	2013	2014	2015	2016	2017	2018	2019
England	24,430	24,530	25,790	27,370	28,970	30,370	30,050	30,950	32,560	33,870
Northern Ireland	70	110	170	180	180	170	230	210	270	230
Scotland	2,260	2,240	2,260	2,400	2,490	2,680	2,660	2,860	2,940	3,390
Wales	810	980	1,030	1,150	1,230	1,140	1,110	1,070	1,000	1,140
UK	27,550	27,870	29,240	31,100	32,870	34,340	34,050	35,090	36,760	38,630

### B.36 Placed applicants at 13 days after A level results day: domiciled in Not EU

Selected provider countries: difference between cycle and 2018 cycle (at 13 days after A level results day)

Country of provider	2010	2011	2012	2013	2014	2015	2016	2017	2018	2019
England	-25%	-25%	-21%	-16%	-11%	-7%	-8%	-5%	0%	4%
Northern Ireland	-76%	-57%	-38%	-31%	-32%	-37%	-15%	-21%	0%	-13%
Scotland	-23%	-24%	-23%	-18%	-15%	-9%	-10%	-3%	0%	15%
Wales	-20%	-2%	3%	15%	23%	14%	11%	7%	0%	14%
UK	-25%	-24%	-20%	-15%	-11%	-7%	-7%	-5%	0%	5%

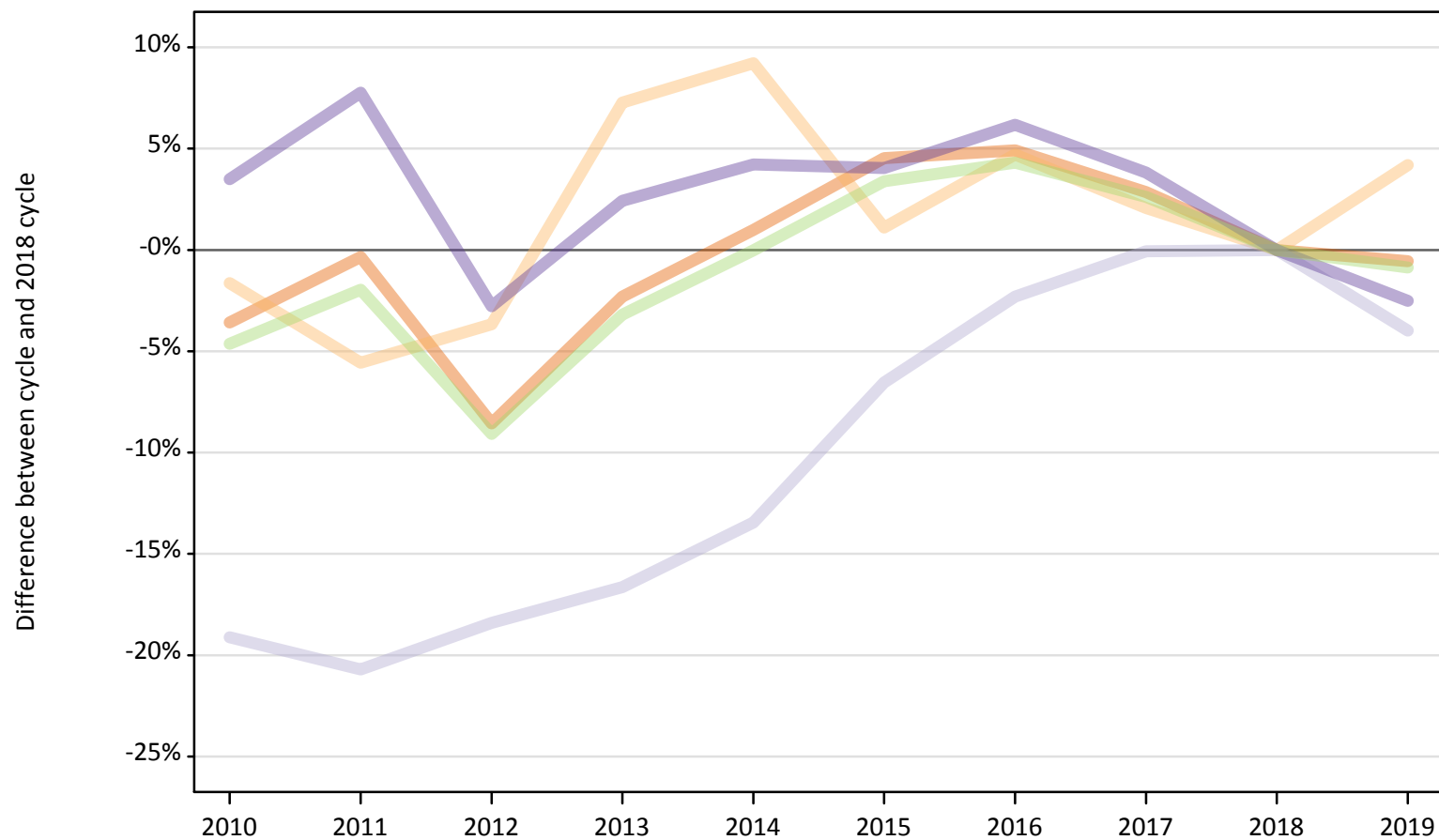
Note: The percentage change is not recorded in the above table for groups with fewer than 10 placed applicants in that cycle or in the 2018 cycle.



### B.37 Placed applicants at 13 days after A level results day: domiciled in UK

Selected provider countries: difference between cycle and 2018 cycle (at 13 days after A level results day)

- England
- Northern Ireland
- Scotland
- Wales
- UK



Note: The percentage change is not plotted in the above chart for groups with fewer than 30 placed applicants in any one cycle.

**B.38 Placed applicants at 13 days after A level results day: domiciled in UK**

Placed applicants by provider country (at 13 days after A level results day)

Country of provider	2010	2011	2012	2013	2014	2015	2016	2017	2018	2019
England	333,390	344,530	316,160	337,800	349,170	361,380	362,760	355,640	345,740	343,810
Northern Ireland	9,020	8,660	8,840	9,840	10,020	9,270	9,610	9,360	9,170	9,560
Scotland	31,330	30,710	31,600	32,280	33,520	36,190	37,830	38,700	38,730	37,190
Wales	21,200	22,070	19,910	20,980	21,350	21,310	21,750	21,260	20,480	19,970
UK	394,930	405,970	376,510	400,900	414,050	428,160	431,950	424,970	414,120	410,520

**B.39 Placed applicants at 13 days after A level results day: domiciled in UK**

Selected provider countries: difference between cycle and 2018 cycle (at 13 days after A level results day)

Country of provider	2010	2011	2012	2013	2014	2015	2016	2017	2018	2019
England	-4%	-0%	-9%	-2%	1%	5%	5%	3%	0%	-1%
Northern Ireland	-2%	-6%	-4%	7%	9%	1%	5%	2%	0%	4%
Scotland	-19%	-21%	-18%	-17%	-13%	-7%	-2%	-0%	0%	-4%
Wales	3%	8%	-3%	2%	4%	4%	6%	4%	0%	-3%
UK	-5%	-2%	-9%	-3%	-0%	3%	4%	3%	0%	-1%

Note: The percentage change is not recorded in the above table for groups with fewer than 10 placed applicants in that cycle or in the 2018 cycle.