

# Daily Clearing Analysis: Age

**Analysis at 00:05 on Wednesday 28 August 2019 (13 days after A level results day)**

**C.1 Placed applicants by country of domicile and age group, 2019 cycle (13 days after A level results day)**

Domicile of applicant	Age group				
	17 and under	18	19	20 to 24	25 and over
England	580	205,150	64,970	46,060	28,960
Northern Ireland	30	7,930	2,350	2,290	810
Scotland	510	14,050	4,380	7,840	6,610
Wales	20	9,870	3,310	2,750	2,060
UK	1,130	236,990	75,010	58,940	38,450

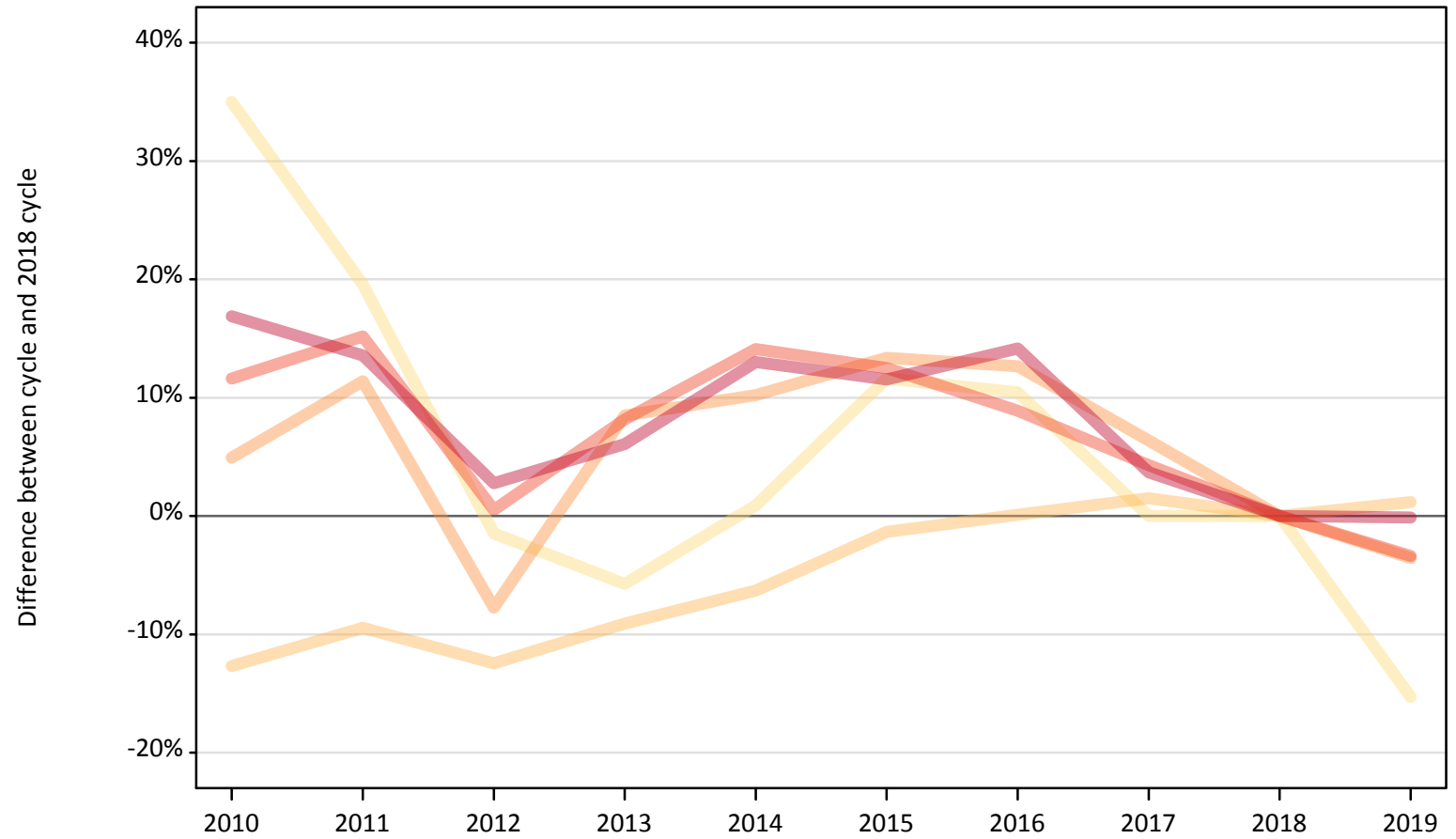
**C.2 Proportion of 18 year old population placed by country of domicile, 2019 cycle (13 days after A level results day)**

Domicile of applicant	Age group	2019
England	18	34.3%
Northern Ireland	18	35.4%
Scotland	18	26.1%
Wales	18	29.4%

### C.3 Placed applicants from England by age group at 13 days after A level results day

Selected age groups: difference between cycle and 2018 cycle

- 17 and under
- 18
- 19
- 20 to 24
- 25 and over



Note: The percentage change is not plotted in the above chart for groups with fewer than 30 placed applicants in any one cycle.

#### C.4 Placed applicants from England by age group at 13 days after A level results day

All age groups

Domicile of applicant	Age group	2010	2011	2012	2013	2014	2015	2016	2017	2018	2019
England	17 and under	920	810	670	640	690	760	750	680	680	580
	18	177,050	183,600	177,510	184,310	189,980	200,030	203,020	205,810	202,780	205,150
	19	70,700	75,040	62,140	73,090	74,240	76,380	75,900	71,660	67,370	64,970
	20 to 24	53,220	54,910	47,920	51,560	54,400	53,640	51,920	49,720	47,670	46,060
	25 and over	33,890	32,930	29,800	30,760	32,770	32,340	33,100	30,070	29,000	28,960

#### C.5 Placed applicants from England by age group at 13 days after A level results day

Selected age groups: difference between cycle and 2018 cycle

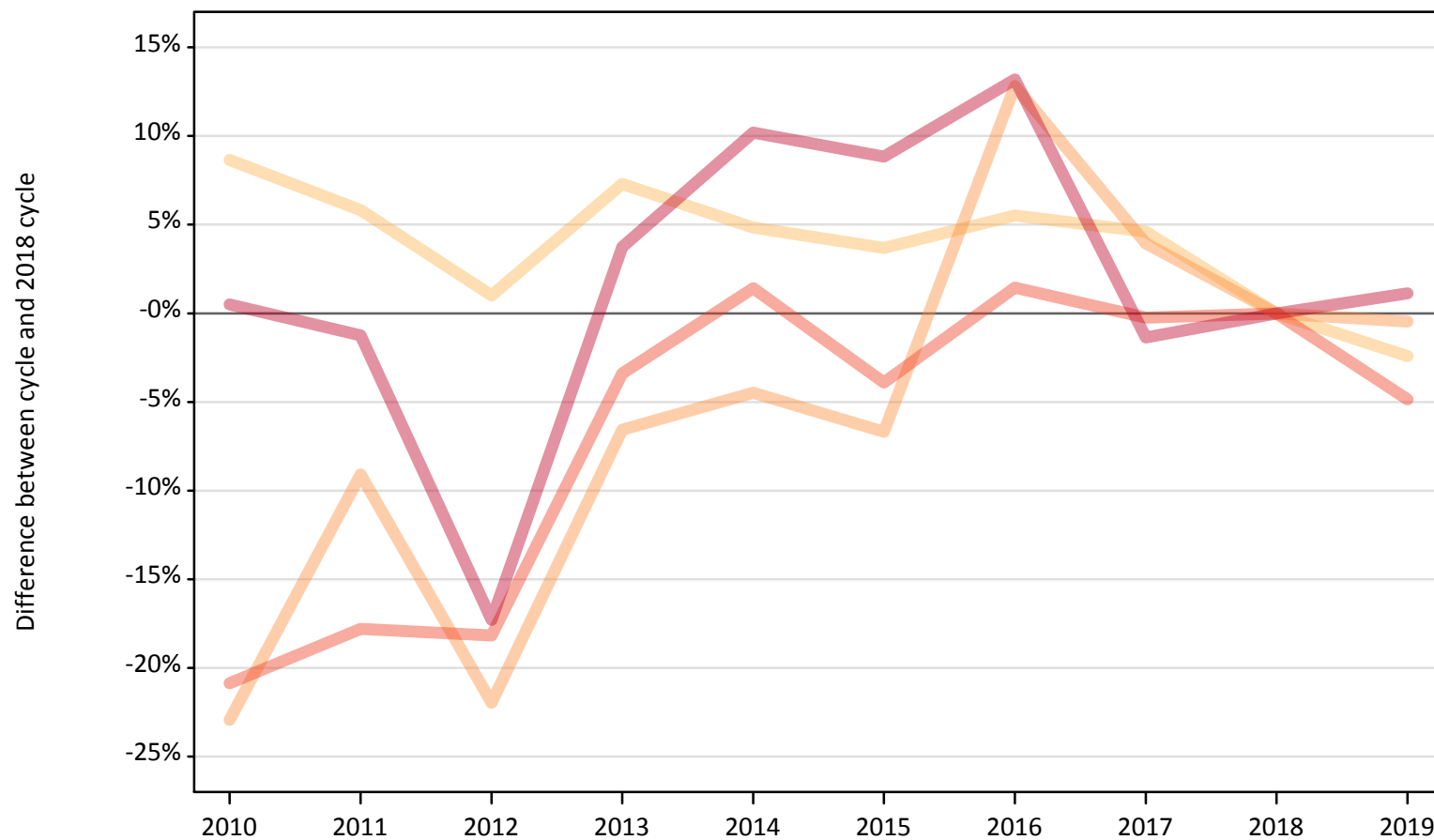
Domicile of applicant	Age group	2010	2011	2012	2013	2014	2015	2016	2017	2018	2019
England	17 and under	35%	20%	-1%	-6%	1%	12%	10%	0%	0%	-15%
	18	-13%	-9%	-12%	-9%	-6%	-1%	0%	1%	0%	1%
	19	5%	11%	-8%	9%	10%	13%	13%	6%	0%	-4%
	20 to 24	12%	15%	1%	8%	14%	13%	9%	4%	0%	-3%
	25 and over	17%	14%	3%	6%	13%	12%	14%	4%	0%	-0%

Note: The percentage change is not recorded in the above table for groups with fewer than 10 placed applicants in that cycle or in the 2018 cycle.

## C.6 Placed applicants from Northern Ireland by age group at 13 days after A level results day

Selected age groups: difference between cycle and 2018 cycle

- 17 and under
- 18
- 19
- 20 to 24
- 25 and over



Note: The percentage change is not plotted in the above chart for groups with fewer than 30 placed applicants in any one cycle.

### C.7 Placed applicants from Northern Ireland by age group at 13 days after A level results day

All age groups

Domicile of applicant	Age group	2010	2011	2012	2013	2014	2015	2016	2017	2018	2019
Northern Ireland	17 and under	40	40	40	20	20	20	30	20	30	30
	18	8,820	8,590	8,200	8,710	8,510	8,420	8,570	8,500	8,120	7,930
	19	1,820	2,150	1,840	2,210	2,260	2,210	2,670	2,460	2,360	2,350
	20 to 24	1,910	1,980	1,970	2,330	2,450	2,320	2,450	2,410	2,410	2,290
	25 and over	810	790	670	830	890	880	910	790	800	810

### C.8 Placed applicants from Northern Ireland by age group at 13 days after A level results day

Selected age groups: difference between cycle and 2018 cycle

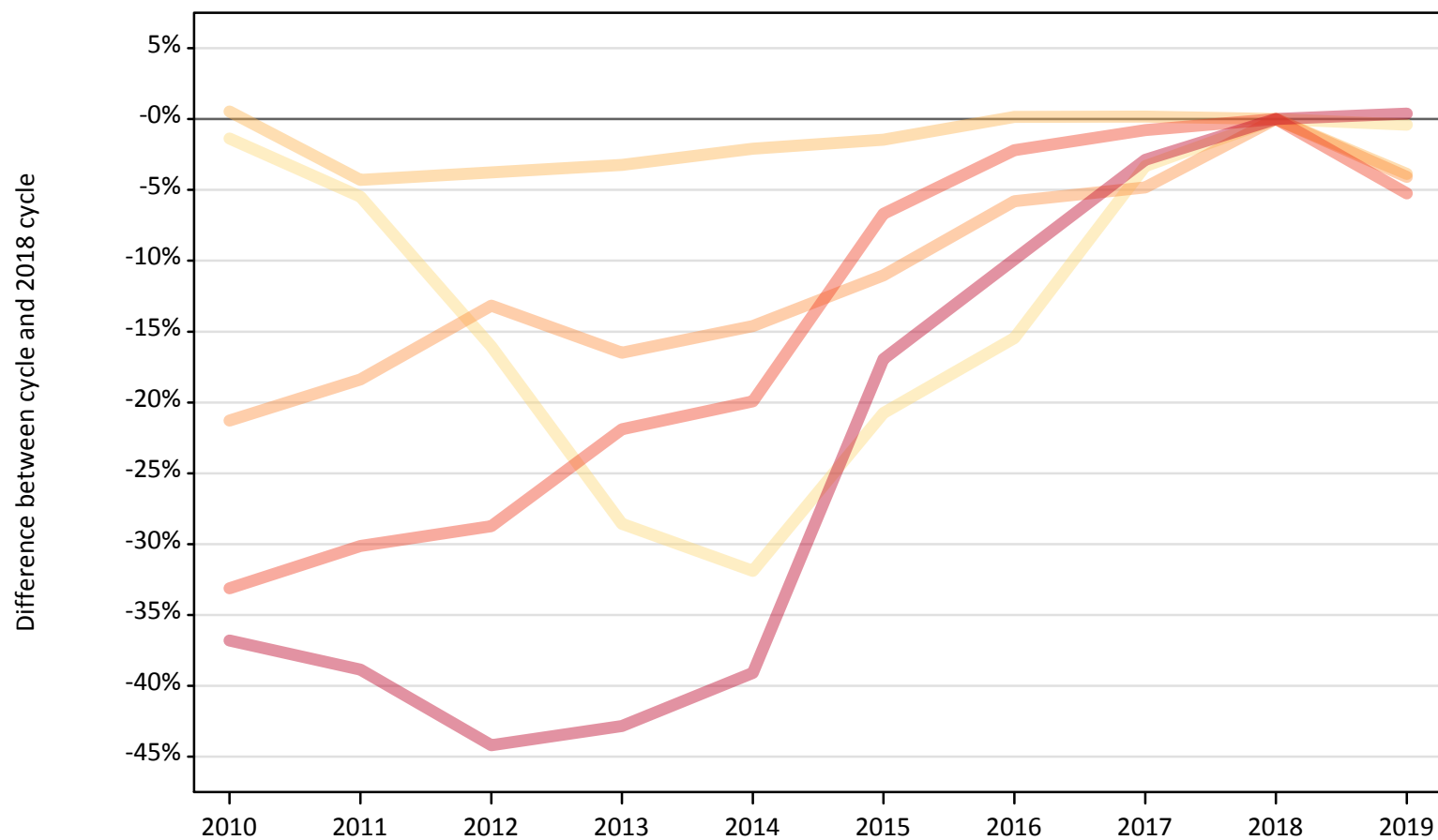
Domicile of applicant	Age group	2010	2011	2012	2013	2014	2015	2016	2017	2018	2019
Northern Ireland	17 and under	56%	48%	68%	-12%	-20%	-28%	24%	-28%	0%	8%
	18	9%	6%	1%	7%	5%	4%	6%	5%	0%	-2%
	19	-23%	-9%	-22%	-7%	-4%	-7%	13%	4%	0%	-0%
	20 to 24	-21%	-18%	-18%	-3%	1%	-4%	1%	-0%	0%	-5%
	25 and over	0%	-1%	-17%	4%	10%	9%	13%	-1%	0%	1%

Note: The percentage change is not recorded in the above table for groups with fewer than 10 placed applicants in that cycle or in the 2018 cycle.

### C.9 Placed applicants from Scotland by age group at 13 days after A level results day

Selected age groups: difference between cycle and 2018 cycle

- 17 and under
- 18
- 19
- 20 to 24
- 25 and over



Note: The percentage change is not plotted in the above chart for groups with fewer than 30 placed applicants in any one cycle.

### C.10 Placed applicants from Scotland by age group at 13 days after A level results day

All age groups

Domicile of applicant	Age group	2010	2011	2012	2013	2014	2015	2016	2017	2018	2019
Scotland	17 and under	500	480	430	370	350	410	430	490	510	510
	18	14,690	13,990	14,060	14,140	14,310	14,400	14,640	14,640	14,610	14,050
	19	3,590	3,720	3,960	3,810	3,900	4,060	4,300	4,340	4,560	4,380
	20 to 24	5,540	5,780	5,900	6,470	6,630	7,720	8,100	8,210	8,280	7,840
	25 and over	4,160	4,030	3,680	3,770	4,010	5,470	5,940	6,400	6,590	6,610

### C.11 Placed applicants from Scotland by age group at 13 days after A level results day

Selected age groups: difference between cycle and 2018 cycle

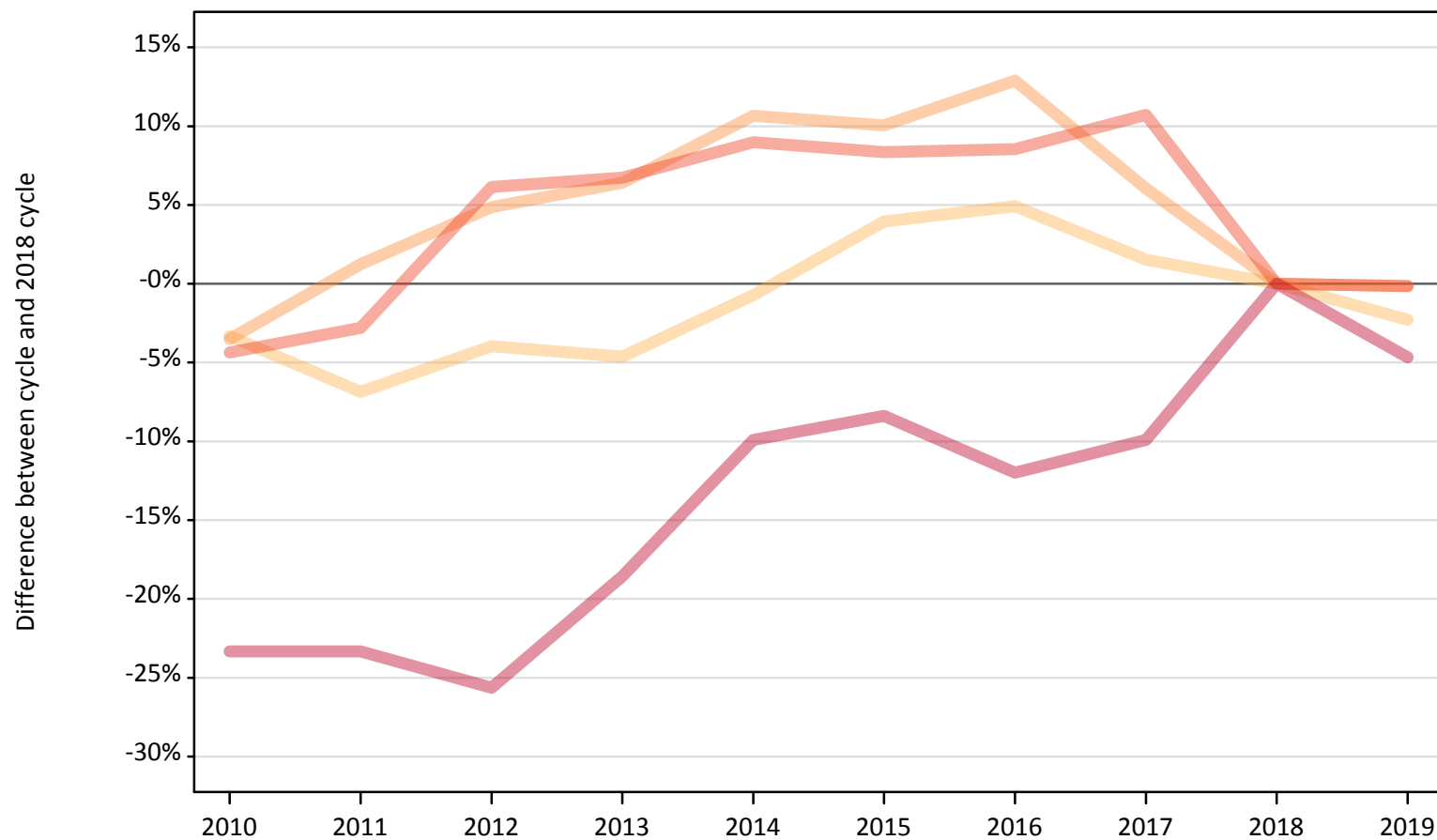
Domicile of applicant	Age group	2010	2011	2012	2013	2014	2015	2016	2017	2018	2019
Scotland	17 and under	-1%	-5%	-16%	-29%	-32%	-21%	-15%	-3%	0%	-0%
	18	1%	-4%	-4%	-3%	-2%	-1%	0%	0%	0%	-4%
	19	-21%	-18%	-13%	-16%	-15%	-11%	-6%	-5%	0%	-4%
	20 to 24	-33%	-30%	-29%	-22%	-20%	-7%	-2%	-1%	0%	-5%
	25 and over	-37%	-39%	-44%	-43%	-39%	-17%	-10%	-3%	0%	0%

Note: The percentage change is not recorded in the above table for groups with fewer than 10 placed applicants in that cycle or in the 2018 cycle.

### C.12 Placed applicants from Wales by age group at 13 days after A level results day

Selected age groups: difference between cycle and 2018 cycle

- 17 and under
- 18
- 19
- 20 to 24
- 25 and over



Note: The percentage change is not plotted in the above chart for groups with fewer than 30 placed applicants in any one cycle.



### C.13 Placed applicants from Wales by age group at 13 days after A level results day

All age groups

Domicile of applicant	Age group	2010	2011	2012	2013	2014	2015	2016	2017	2018	2019
Wales	17 and under	30	30	20	30	20	20	20	20	30	20
	18	9,760	9,410	9,700	9,630	10,030	10,500	10,600	10,250	10,100	9,870
	19	3,200	3,350	3,470	3,520	3,670	3,650	3,740	3,510	3,310	3,310
	20 to 24	2,630	2,670	2,920	2,940	3,000	2,980	2,990	3,050	2,750	2,750
	25 and over	1,660	1,660	1,610	1,760	1,950	1,980	1,900	1,950	2,160	2,060

### C.14 Placed applicants from Wales by age group at 13 days after A level results day

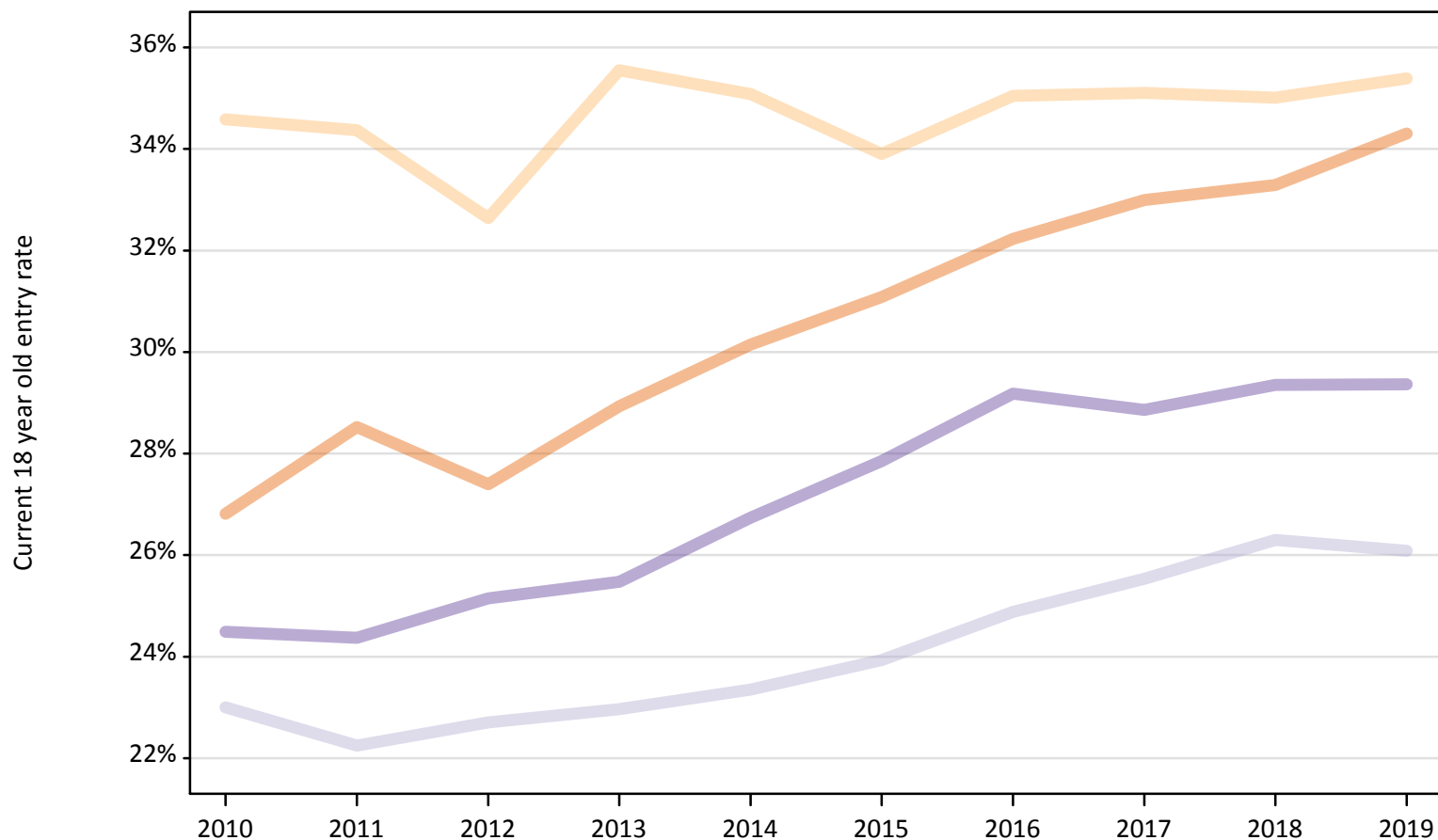
Selected age groups: difference between cycle and 2018 cycle

Domicile of applicant	Age group	2010	2011	2012	2013	2014	2015	2016	2017	2018	2019
Wales	17 and under	36%	32%	-16%	20%	-12%	-28%	-4%	-36%	0%	-12%
	18	-3%	-7%	-4%	-5%	-1%	4%	5%	2%	0%	-2%
	19	-4%	1%	5%	6%	11%	10%	13%	6%	0%	-0%
	20 to 24	-4%	-3%	6%	7%	9%	8%	9%	11%	0%	-0%
	25 and over	-23%	-23%	-26%	-19%	-10%	-8%	-12%	-10%	0%	-5%

Note: The percentage change is not recorded in the above table for groups with fewer than 10 placed applicants in that cycle or in the 2018 cycle.

### C.15 Entry rates for 18 year olds by UK country of domicile: 13 days after A level results day

Placed 18 year old applicants as a proportion of the 18 year old population



### C.16 Entry rates for 18 year olds by UK country of domicile: 13 days after A level results day

Placed 18 year old applicants as a proportion of the 18 year old population

Domicile of applicant	Age group	2010	2011	2012	2013	2014	2015	2016	2017	2018	2019
England	18	26.8%	28.5%	27.4%	28.9%	30.1%	31.1%	32.2%	33.0%	33.3%	34.3%
Northern Ireland	18	34.6%	34.4%	32.6%	35.6%	35.1%	33.9%	35.0%	35.1%	35.0%	35.4%
Scotland	18	23.0%	22.3%	22.7%	23.0%	23.3%	23.9%	24.9%	25.5%	26.3%	26.1%
Wales	18	24.5%	24.4%	25.2%	25.5%	26.7%	27.9%	29.2%	28.9%	29.4%	29.4%