

Analysis at 00:05 on Wednesday 28 August 2019 (13 days after A level results day)

S.1 Placed applicants from all domiciles by sex: 13 days after A level results day

Placed applicants: change relative to 2018 cycle totals

Men
Women



Note: The percentage change is not plotted in the above chart for groups with fewer than 30 placed applicants in any one cycle.

S.2 Placed applicants from all domiciles by sex: 13 days after A level results day

Applicant Status	Sex	2010	2011	2012	2013	2014	2015	2016	2017	2018	2019
Placed	Men	199,820	206,490	189,960	202,990	208,160	213,500	215,310	211,550	205,880	204,220
	Women	245,980	252,280	237,370	251,800	263,370	276,450	280,300	277,350	274,340	274,040
	All	445,800	458,780	427,330	454,790	471,530	489,960	495,610	488,900	480,220	478,260

S.3 Placed applicants from all domiciles by sex: 13 days after A level results day

Placed applicants: change relative to 2018 cycle totals

Applicant Status	Sex	2010	2011	2012	2013	2014	2015	2016	2017	2018	2019
Placed	Men	-3%	0%	-8%	-1%	1%	4%	5%	3%	0%	-1%
	Women	-10%	-8%	-13%	-8%	-4%	1%	2%	1%	0%	-0%
	All	-7%	-4%	-11%	-5%	-2%	2%	3%	2%	0%	-0%

Note: The percentage change is not recorded in the above table for groups with fewer than 10 placed applicants in that cycle or in the 2018 cycle.

S.4 Placed applicants from all domiciles by sex: 13 days after A level results day

Placed applicants: absolute change relative to 2018 cycle totals

Applicant Status	Sex	2010	2011	2012	2013	2014	2015	2016	2017	2018	2019
Placed	Men	-6,060	620	-15,920	-2,890	2,290	7,630	9,430	5,670	0	-1,660
	Women	-28,360	-22,050	-36,970	-22,540	-10,970	2,120	5,960	3,010	0	-300
	All	-34,420	-21,440	-52,880	-25,430	-8,680	9,740	15,390	8,690	0	-1,960

S.5 Placed applicants from the UK by sex: 13 days after A level results day

Placed applicants: change relative to 2018 cycle totals

Men
Women



Note: The percentage change is not plotted in the above chart for groups with fewer than 30 placed applicants in any one cycle.

S.6 Placed applicants from the UK by sex: 13 days after A level results day

Applicant Status	Sex	2010	2011	2012	2013	2014	2015	2016	2017	2018	2019
Placed	Men	175,400	181,740	166,350	178,110	182,230	186,150	187,070	183,060	176,990	174,480
	Women	219,530	224,240	210,160	222,790	231,820	242,010	244,880	241,910	237,130	236,040
	All	394,930	405,970	376,510	400,900	414,050	428,160	431,950	424,970	414,120	410,520

S.7 Placed applicants from the UK by sex: 13 days after A level results day

Placed applicants: change relative to 2018 cycle totals

Applicant Status	Sex	2010	2011	2012	2013	2014	2015	2016	2017	2018	2019
Placed	Men	-1%	3%	-6%	1%	3%	5%	6%	3%	0%	-1%
	Women	-7%	-5%	-11%	-6%	-2%	2%	3%	2%	0%	-0%
	All	-5%	-2%	-9%	-3%	-0%	3%	4%	3%	0%	-1%

Note: The percentage change is not recorded in the above table for groups with fewer than 10 placed applicants in that cycle or in the 2018 cycle.

S.8 Placed applicants from the UK by sex: 13 days after A level results day

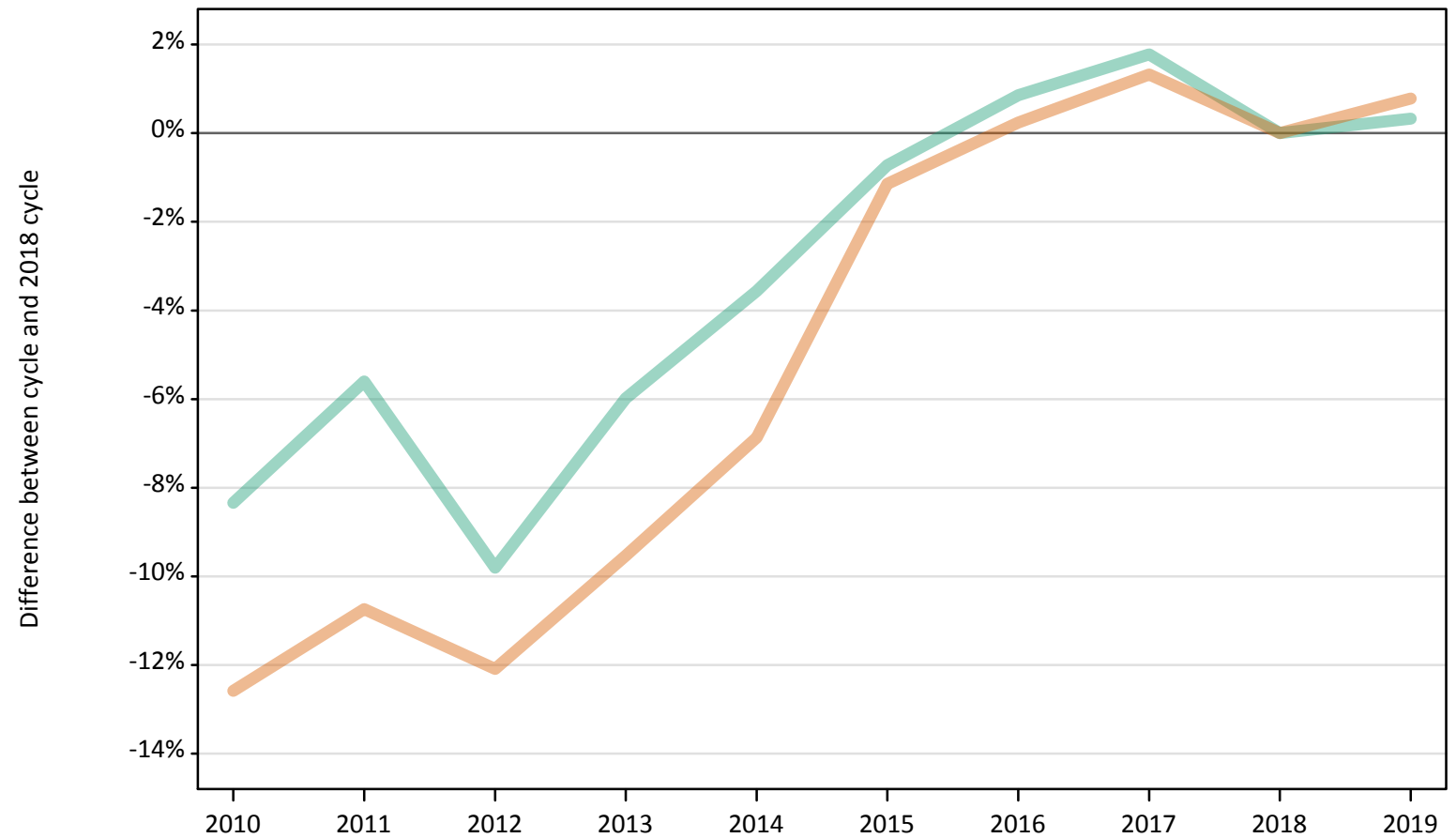
Placed applicants: absolute change relative to 2018 cycle totals

Applicant Status	Sex	2010	2011	2012	2013	2014	2015	2016	2017	2018	2019
Placed	Men	-1,590	4,740	-10,640	1,120	5,240	9,160	10,080	6,070	0	-2,510
	Women	-17,600	-12,890	-26,970	-14,340	-5,310	4,880	7,750	4,780	0	-1,090
	All	-19,190	-8,150	-37,610	-13,220	-70	14,040	17,830	10,850	0	-3,600

S.9 Placed 18 year old applicants from the UK by sex: 13 days after A level results day

Placed 18 year old applicants: change relative to 2018 cycle totals

Men
Women



Note: The percentage change is not plotted in the above chart for groups with fewer than 30 placed applicants in any one cycle.

S.10 Placed 18 year old applicants from the UK by sex: 13 days after A level results day

Applicant Status	Sex	2010	2011	2012	2013	2014	2015	2016	2017	2018	2019
Placed	Men	94,100	96,910	92,590	96,520	99,000	101,910	103,540	104,480	102,660	102,990
	Women	116,230	118,680	116,880	120,280	123,820	131,440	133,280	134,720	132,960	133,990
	All	210,330	215,590	209,470	216,800	222,830	233,350	236,820	239,200	235,620	236,990

S.11 Placed 18 year old applicants from the UK by sex: 13 days after A level results day

Placed 18 year old applicants: change relative to 2018 cycle totals

Applicant Status	Sex	2010	2011	2012	2013	2014	2015	2016	2017	2018	2019
Placed	Men	-8%	-6%	-10%	-6%	-4%	-1%	1%	2%	0%	0%
	Women	-13%	-11%	-12%	-10%	-7%	-1%	0%	1%	0%	1%
	All	-11%	-9%	-11%	-8%	-5%	-1%	1%	2%	0%	1%

Note: The percentage change is not recorded in the above table for groups with fewer than 10 placed applicants in that cycle or in the 2018 cycle.

S.12 Placed 18 year old applicants from the UK by sex: 13 days after A level results day

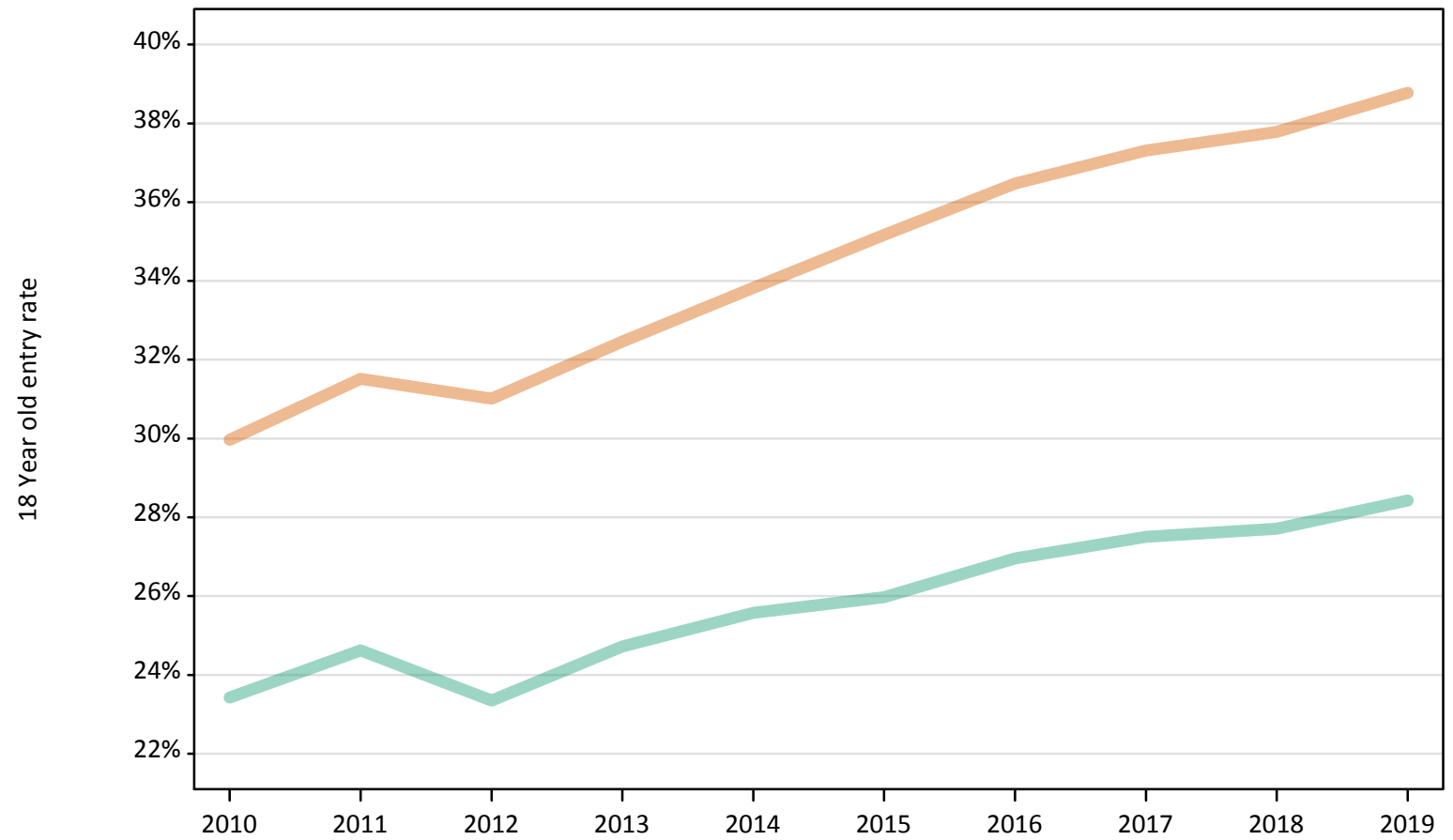
Placed 18 year old applicants: absolute change relative to 2018 cycle totals

Applicant Status	Sex	2010	2011	2012	2013	2014	2015	2016	2017	2018	2019
Placed	Men	-8,560	-5,750	-10,070	-6,140	-3,650	-740	880	1,830	0	340
	Women	-16,730	-14,280	-16,080	-12,680	-9,140	-1,520	320	1,760	0	1,040
	All	-25,290	-20,030	-26,140	-18,820	-12,790	-2,270	1,200	3,590	0	1,370

S.13 Placed 18 year old applicants from the UK by sex: 13 days after A level results day

Placed 18 year old applicants: entry rate

Men
Women



S.14 Placed 18 year old applicants from the UK by sex: 13 days after A level results day

Placed 18 year old applicants: entry rate

Applicant Status	Sex	2010	2011	2012	2013	2014	2015	2016	2017	2018	2019
Placed	Men	23.4%	24.6%	23.3%	24.7%	25.6%	26.0%	27.0%	27.5%	27.7%	28.4%
	Women	30.0%	31.5%	31.0%	32.5%	33.8%	35.2%	36.5%	37.3%	37.8%	38.8%
	All	26.6%	28.0%	27.1%	28.5%	29.6%	30.5%	31.6%	32.3%	32.6%	33.5%

S.15 Placed 18 year old applicants from the UK by sex: 13 days after A level results day

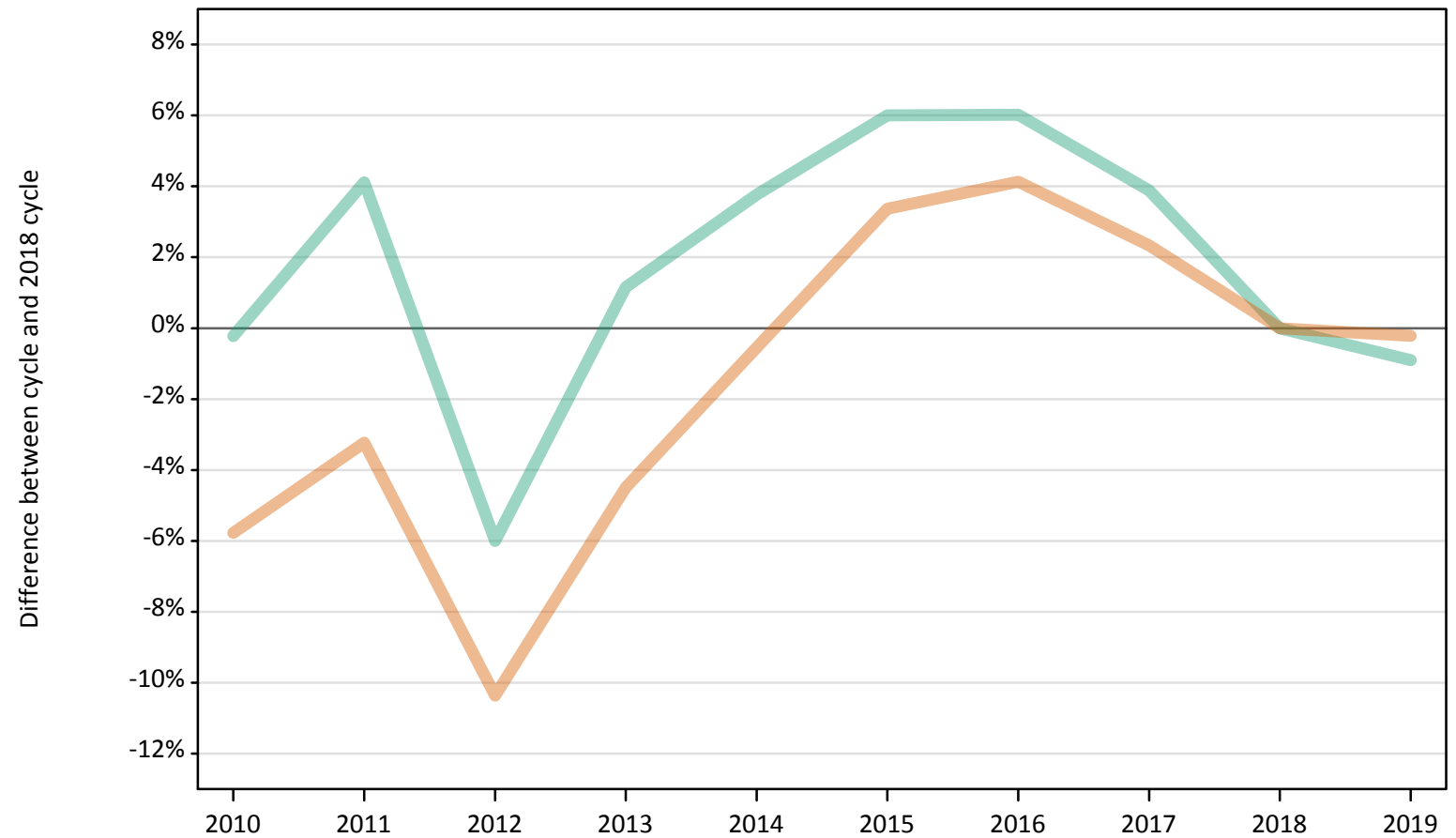
Placed 18 year old applicants: entry rate (indexed to 100 = Men)

Applicant Status	Sex	2010	2011	2012	2013	2014	2015	2016	2017	2018	2019
Placed	Men	100	100	100	100	100	100	100	100	100	100
	Women	128	128	133	131	132	135	135	136	136	136

S.16 Placed applicants from England by sex: 13 days after A level results day

Placed applicants: change relative to 2018 cycle totals

Men
Women



Note: The percentage change is not plotted in the above chart for groups with fewer than 30 placed applicants in any one cycle.

S.17 Placed applicants from England by sex: 13 days after A level results day

Applicant Status	Sex	2010	2011	2012	2013	2014	2015	2016	2017	2018	2019
Placed	Men	149,750	156,270	141,080	151,830	155,750	159,100	159,120	155,920	150,090	148,740
	Women	186,010	191,030	176,950	188,540	196,330	204,050	205,560	202,020	197,400	196,970
	All	335,760	347,290	318,030	340,360	352,080	363,150	364,680	357,940	347,500	345,720

S.18 Placed applicants from England by sex: 13 days after A level results day

Placed applicants: change relative to 2018 cycle totals

Applicant Status	Sex	2010	2011	2012	2013	2014	2015	2016	2017	2018	2019
Placed	Men	-0%	4%	-6%	1%	4%	6%	6%	4%	0%	-1%
	Women	-6%	-3%	-10%	-4%	-1%	3%	4%	2%	0%	-0%
	All	-3%	-0%	-8%	-2%	1%	5%	5%	3%	0%	-1%

Note: The percentage change is not recorded in the above table for groups with fewer than 10 placed applicants in that cycle or in the 2018 cycle.

S.19 Placed applicants from England by sex: 13 days after A level results day

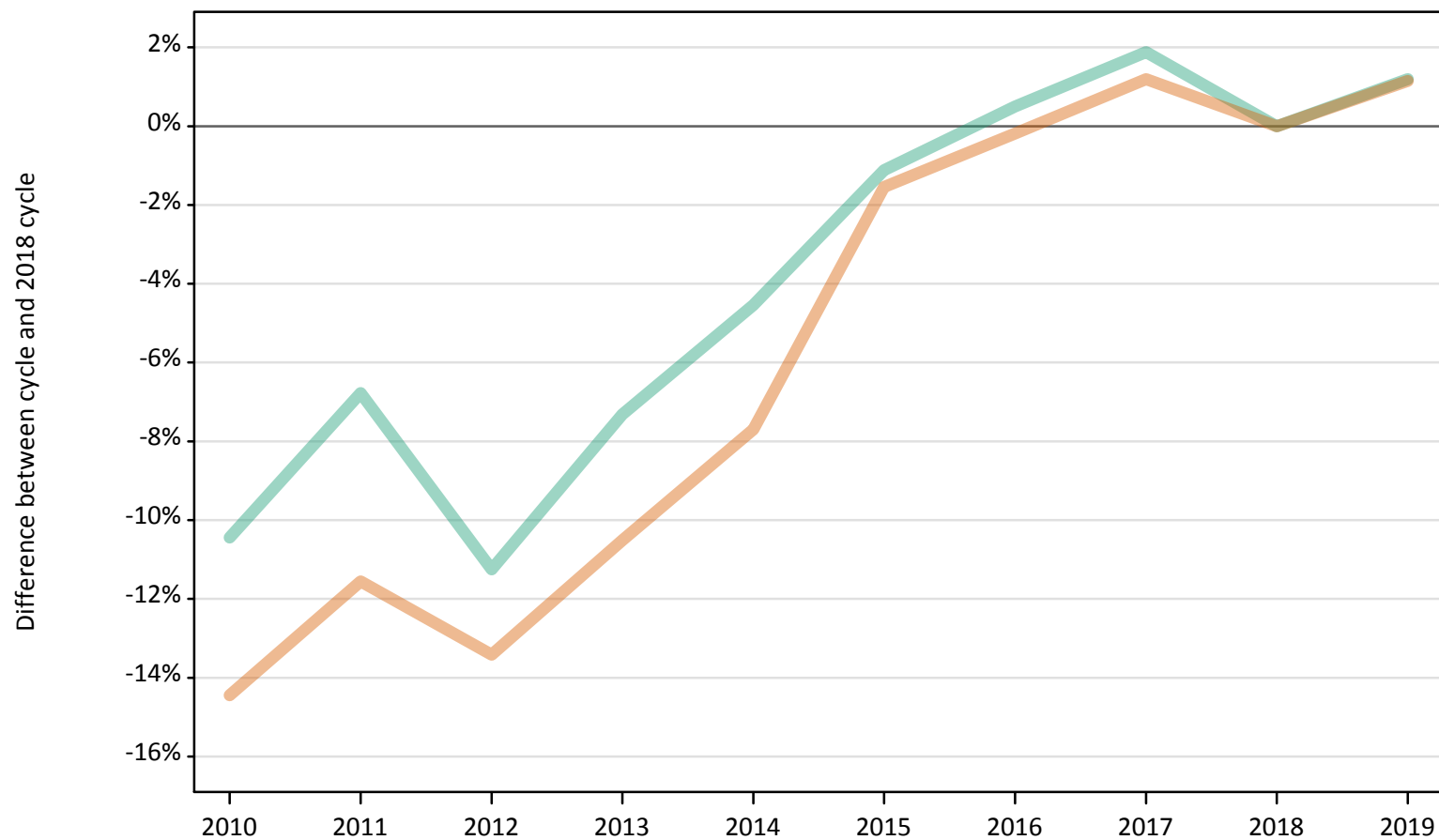
Placed applicants: absolute change relative to 2018 cycle totals

Applicant Status	Sex	2010	2011	2012	2013	2014	2015	2016	2017	2018	2019
Placed	Men	-340	6,180	-9,010	1,740	5,660	9,000	9,030	5,830	0	-1,350
	Women	-11,400	-6,380	-20,450	-8,870	-1,070	6,650	8,160	4,610	0	-430
	All	-11,730	-200	-29,460	-7,130	4,580	15,650	17,190	10,440	0	-1,780

S.20 Placed 18 year old applicants from England by sex: 13 days after A level results day

Placed 18 year old applicants: change relative to 2018 cycle totals

Men
Women



Note: The percentage change is not plotted in the above chart for groups with fewer than 30 placed applicants in any one cycle.

S.21 Placed 18 year old applicants from England by sex: 13 days after A level results day

Applicant Status	Sex	2010	2011	2012	2013	2014	2015	2016	2017	2018	2019
Placed	Men	79,660	82,920	78,940	82,440	84,910	87,960	89,390	90,620	88,950	90,010
	Women	97,390	100,680	98,570	101,870	105,070	112,080	113,620	115,190	113,830	115,140
	All	177,050	183,600	177,510	184,310	189,980	200,030	203,020	205,810	202,780	205,150

S.22 Placed 18 year old applicants from England by sex: 13 days after A level results day

Placed 18 year old applicants: change relative to 2018 cycle totals

Applicant Status	Sex	2010	2011	2012	2013	2014	2015	2016	2017	2018	2019
Placed	Men	-10%	-7%	-11%	-7%	-5%	-1%	0%	2%	0%	1%
	Women	-14%	-12%	-13%	-11%	-8%	-2%	-0%	1%	0%	1%
	All	-13%	-9%	-12%	-9%	-6%	-1%	0%	1%	0%	1%

Note: The percentage change is not recorded in the above table for groups with fewer than 10 placed applicants in that cycle or in the 2018 cycle.

S.23 Placed 18 year old applicants from England by sex: 13 days after A level results day

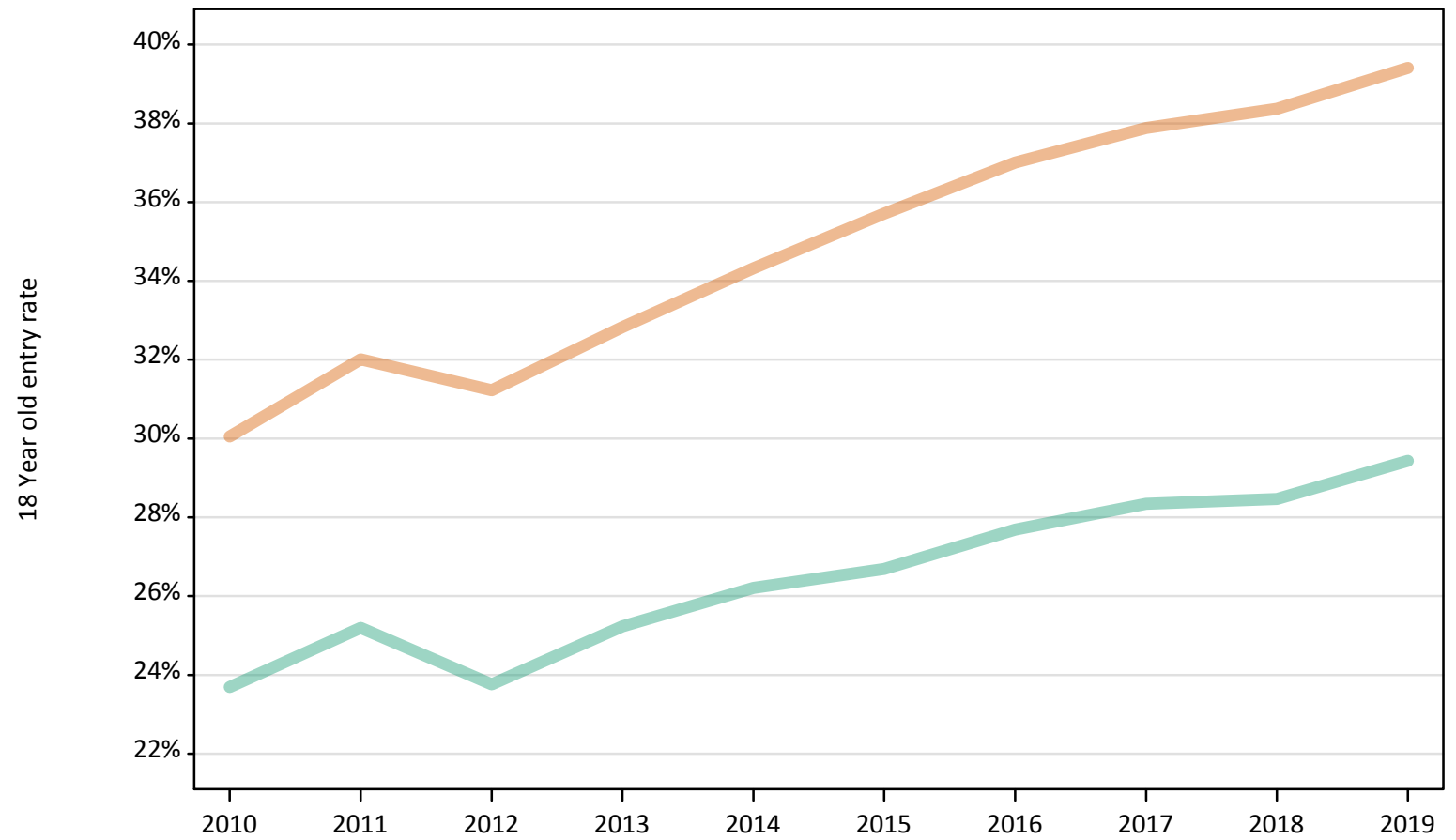
Placed 18 year old applicants: absolute change relative to 2018 cycle totals

Applicant Status	Sex	2010	2011	2012	2013	2014	2015	2016	2017	2018	2019
Placed	Men	-9,290	-6,030	-10,010	-6,510	-4,040	-990	440	1,670	0	1,060
	Women	-16,450	-13,150	-15,270	-11,970	-8,760	-1,760	-210	1,360	0	1,300
	All	-25,740	-19,180	-25,270	-18,470	-12,800	-2,750	230	3,030	0	2,370

S.24 Placed 18 year old applicants from England by sex: 13 days after A level results day

Placed 18 year old applicants: entry rate

Men
Women



S.25 Placed 18 year old applicants from England by sex: 13 days after A level results day

Placed 18 year old applicants: entry rate

Applicant Status	Sex	2010	2011	2012	2013	2014	2015	2016	2017	2018	2019
Placed	Men	23.7%	25.2%	23.8%	25.2%	26.2%	26.7%	27.7%	28.3%	28.5%	29.4%
	Women	30.1%	32.0%	31.2%	32.8%	34.3%	35.7%	37.0%	37.9%	38.4%	39.4%
	All	26.8%	28.5%	27.4%	28.9%	30.1%	31.1%	32.2%	33.0%	33.3%	34.3%

S.26 Placed 18 year old applicants from England by sex: 13 days after A level results day

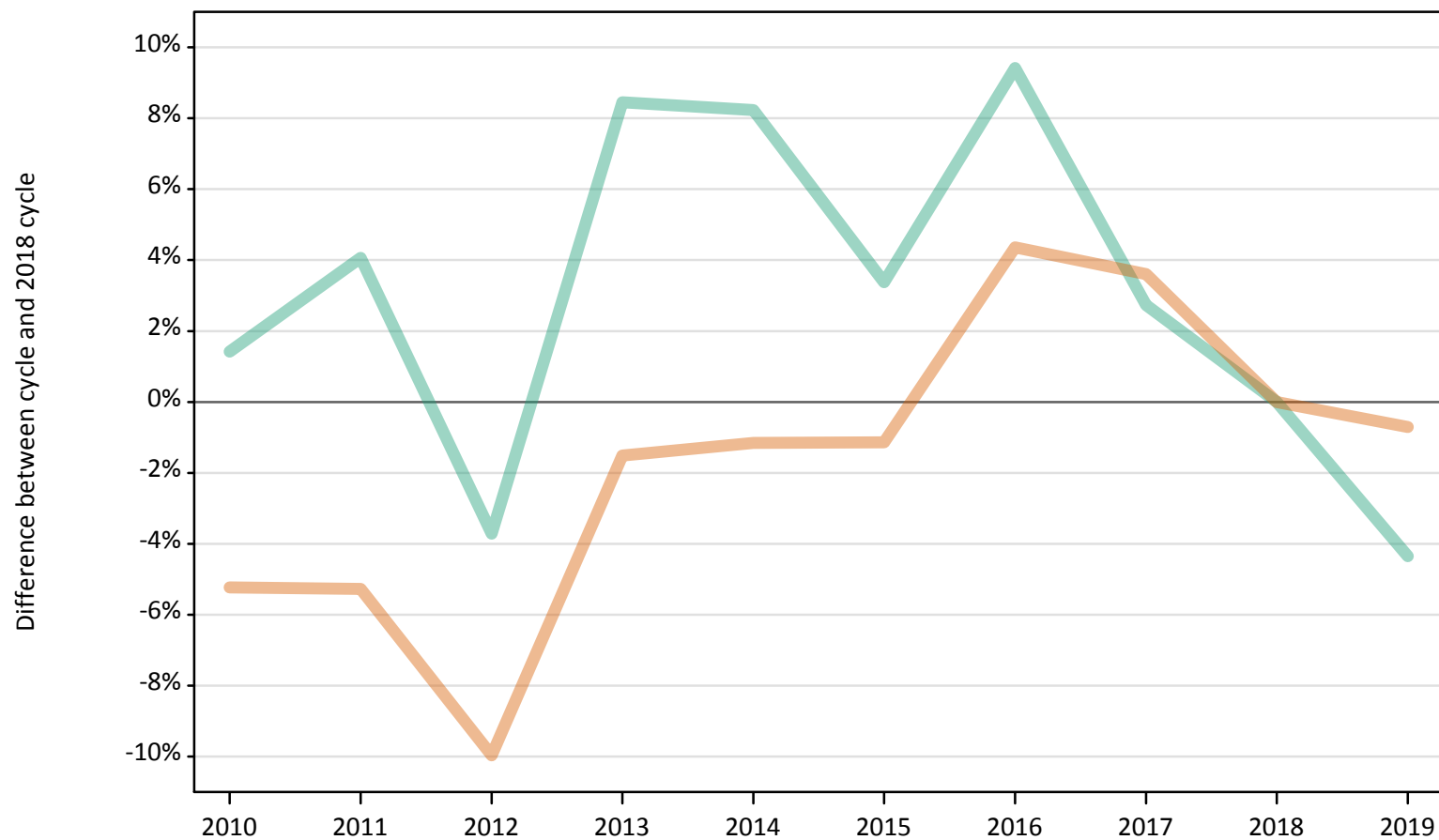
Placed 18 year old applicants: entry rate (indexed to 100 = Men)

Applicant Status	Sex	2010	2011	2012	2013	2014	2015	2016	2017	2018	2019
Placed	Men	100	100	100	100	100	100	100	100	100	100
	Women	127	127	131	130	131	134	134	134	135	134

S.27 Placed applicants from Northern Ireland by sex: 13 days after A level results day

Placed applicants: change relative to 2018 cycle totals

Men
Women



Note: The percentage change is not plotted in the above chart for groups with fewer than 30 placed applicants in any one cycle.

S.28 Placed applicants from Northern Ireland by sex: 13 days after A level results day

Applicant Status	Sex	2010	2011	2012	2013	2014	2015	2016	2017	2018	2019
Placed	Men	6,010	6,170	5,710	6,430	6,420	6,130	6,490	6,090	5,930	5,670
	Women	7,390	7,390	7,020	7,680	7,710	7,710	8,140	8,080	7,800	7,740
	All	13,400	13,550	12,730	14,110	14,120	13,840	14,620	14,170	13,720	13,410

S.29 Placed applicants from Northern Ireland by sex: 13 days after A level results day

Placed applicants: change relative to 2018 cycle totals

Applicant Status	Sex	2010	2011	2012	2013	2014	2015	2016	2017	2018	2019
Placed	Men	1%	4%	-4%	8%	8%	3%	9%	3%	0%	-4%
	Women	-5%	-5%	-10%	-2%	-1%	-1%	4%	4%	0%	-1%
	All	-2%	-1%	-7%	3%	3%	1%	7%	3%	0%	-2%

Note: The percentage change is not recorded in the above table for groups with fewer than 10 placed applicants in that cycle or in the 2018 cycle.

S.30 Placed applicants from Northern Ireland by sex: 13 days after A level results day

Placed applicants: absolute change relative to 2018 cycle totals

Applicant Status	Sex	2010	2011	2012	2013	2014	2015	2016	2017	2018	2019
Placed	Men	80	240	-220	500	490	200	560	160	0	-260
	Women	-410	-410	-780	-120	-90	-90	340	280	0	-60
	All	-320	-170	-1,000	380	400	110	900	440	0	-310

S.31 Placed 18 year old applicants from Northern Ireland by sex: 13 days after A level results day

Placed 18 year old applicants: change relative to 2018 cycle totals

Men
Women



Note: The percentage change is not plotted in the above chart for groups with fewer than 30 placed applicants in any one cycle.

S.32 Placed 18 year old applicants from Northern Ireland by sex: 13 days after A level results day

Applicant Status	Sex	2010	2011	2012	2013	2014	2015	2016	2017	2018	2019
Placed	Men	3,840	3,800	3,560	3,890	3,740	3,600	3,680	3,590	3,500	3,360
	Women	4,980	4,800	4,650	4,830	4,770	4,820	4,890	4,900	4,620	4,570
	All	8,820	8,590	8,200	8,710	8,510	8,420	8,570	8,500	8,120	7,930

S.33 Placed 18 year old applicants from Northern Ireland by sex: 13 days after A level results day

Placed 18 year old applicants: change relative to 2018 cycle totals

Applicant Status	Sex	2010	2011	2012	2013	2014	2015	2016	2017	2018	2019
Placed	Men	10%	8%	2%	11%	7%	3%	5%	3%	0%	-4%
	Women	8%	4%	1%	5%	3%	4%	6%	6%	0%	-1%
	All	9%	6%	1%	7%	5%	4%	6%	5%	0%	-2%

Note: The percentage change is not recorded in the above table for groups with fewer than 10 placed applicants in that cycle or in the 2018 cycle.

S.34 Placed 18 year old applicants from Northern Ireland by sex: 13 days after A level results day

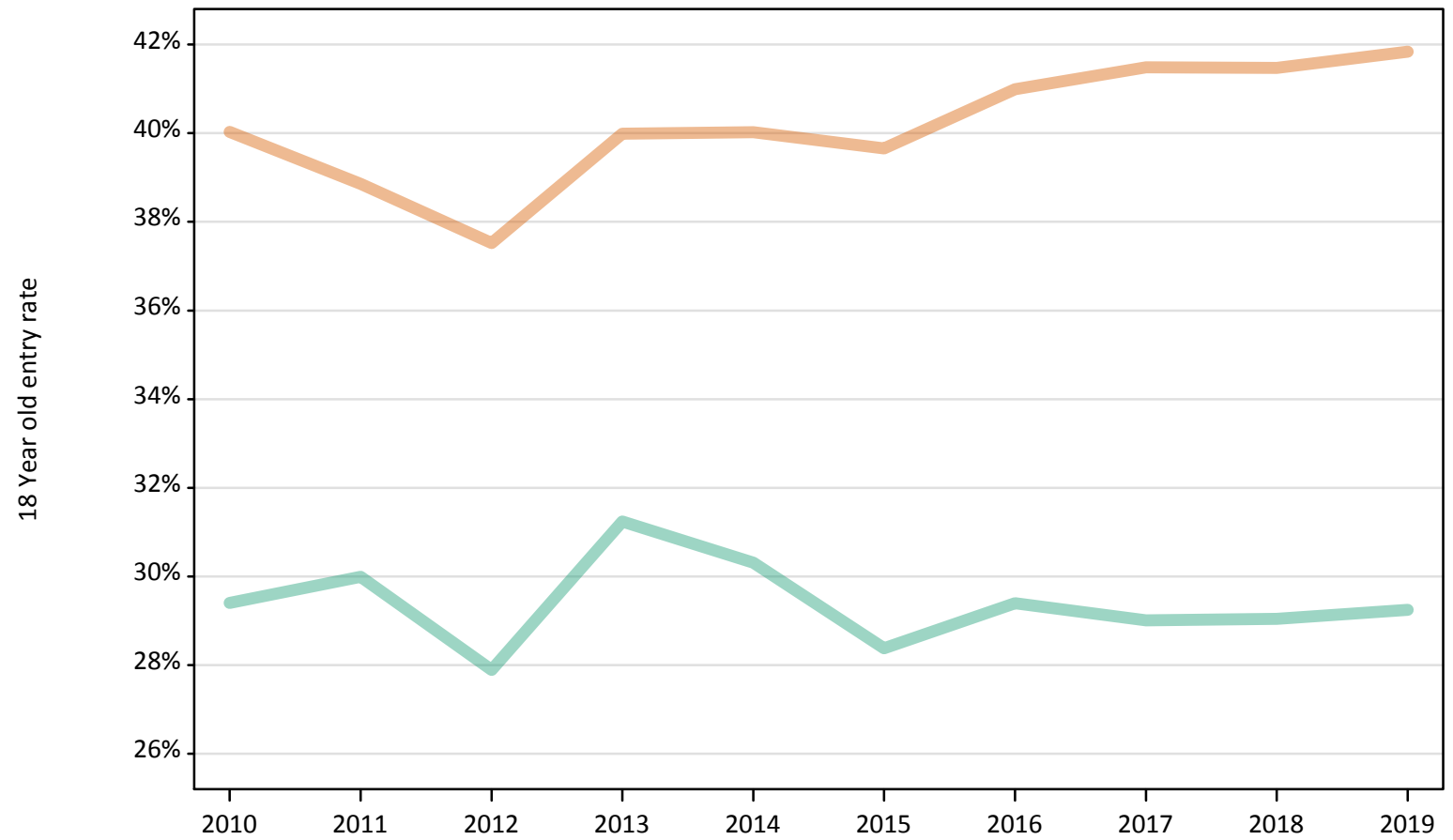
Placed 18 year old applicants: absolute change relative to 2018 cycle totals

Applicant Status	Sex	2010	2011	2012	2013	2014	2015	2016	2017	2018	2019
Placed	Men	340	290	50	380	240	100	180	90	0	-150
	Women	360	180	30	210	160	200	270	290	0	-50
	All	700	470	80	590	390	300	450	370	0	-200

S.35 Placed 18 year old applicants from Northern Ireland by sex: 13 days after A level results day

Placed 18 year old applicants: entry rate

Men
Women



S.36 Placed 18 year old applicants from Northern Ireland by sex: 13 days after A level results day

Placed 18 year old applicants: entry rate

Applicant Status	Sex	2010	2011	2012	2013	2014	2015	2016	2017	2018	2019
Placed	Men	29.4%	30.0%	27.9%	31.2%	30.3%	28.4%	29.4%	29.0%	29.0%	29.2%
	Women	40.0%	38.9%	37.5%	40.0%	40.0%	39.7%	41.0%	41.5%	41.5%	41.8%
	All	34.6%	34.4%	32.6%	35.6%	35.1%	33.9%	35.0%	35.1%	35.0%	35.4%

S.37 Placed 18 year old applicants from Northern Ireland by sex: 13 days after A level results day

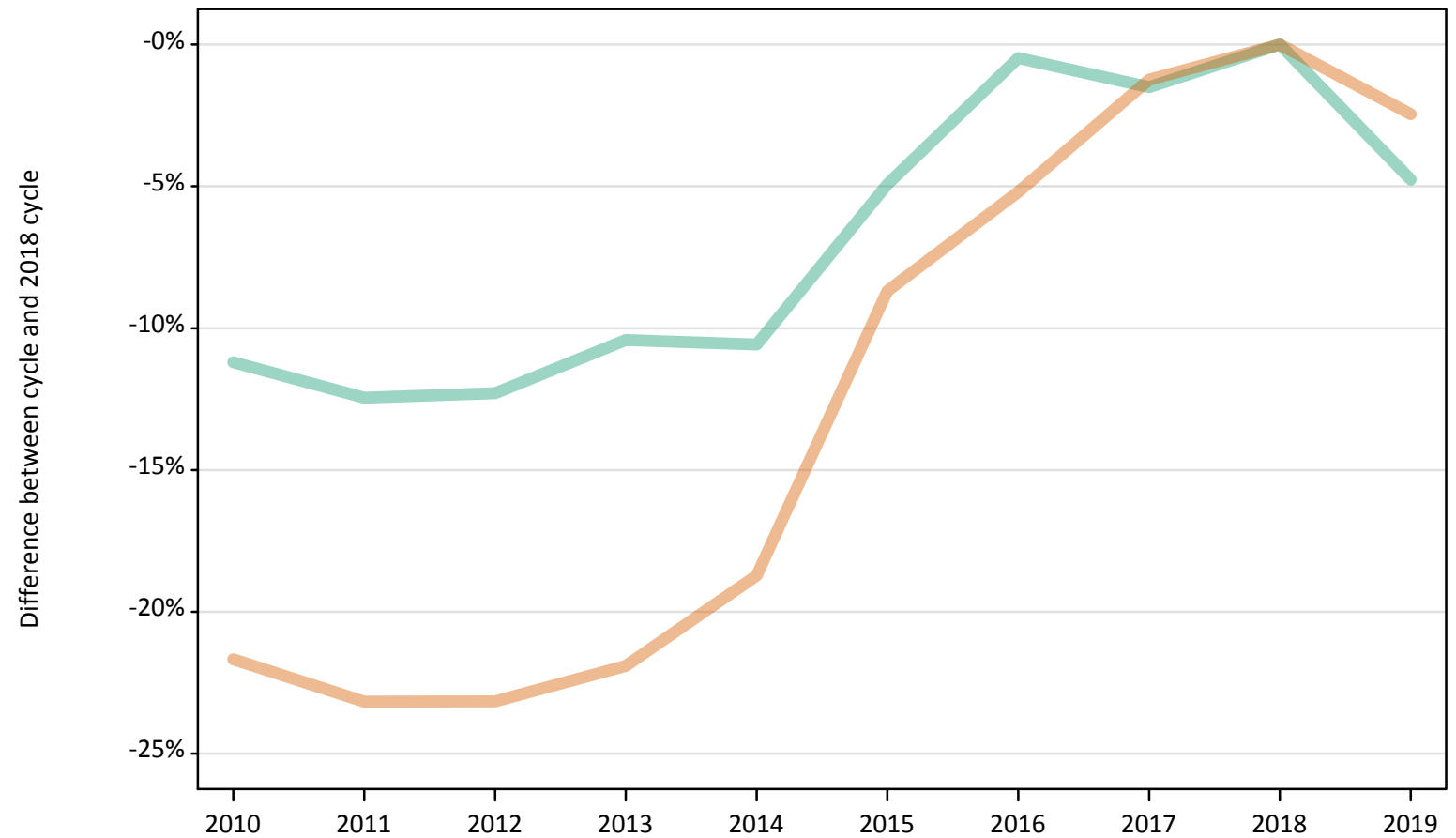
Placed 18 year old applicants: entry rate (indexed to 100 = Men)

Applicant Status	Sex	2010	2011	2012	2013	2014	2015	2016	2017	2018	2019
Placed	Men	100	100	100	100	100	100	100	100	100	100
	Women	136	130	135	128	132	140	139	143	143	143

S.38 Placed applicants from Scotland by sex: 13 days after A level results day

Placed applicants: change relative to 2018 cycle totals

Men
Women



Note: The percentage change is not plotted in the above chart for groups with fewer than 30 placed applicants in any one cycle.

S.39 Placed applicants from Scotland by sex: 13 days after A level results day

Applicant Status	Sex	2010	2011	2012	2013	2014	2015	2016	2017	2018	2019
Placed	Men	12,080	11,910	11,930	12,180	12,160	12,930	13,540	13,400	13,600	12,950
	Women	16,410	16,100	16,100	16,360	17,030	19,130	19,860	20,690	20,950	20,440
	All	28,490	28,000	28,030	28,550	29,190	32,060	33,400	34,090	34,550	33,390

S.40 Placed applicants from Scotland by sex: 13 days after A level results day

Placed applicants: change relative to 2018 cycle totals

Applicant Status	Sex	2010	2011	2012	2013	2014	2015	2016	2017	2018	2019
Placed	Men	-11%	-12%	-12%	-10%	-11%	-5%	-0%	-1%	0%	-5%
	Women	-22%	-23%	-23%	-22%	-19%	-9%	-5%	-1%	0%	-2%
	All	-18%	-19%	-19%	-17%	-16%	-7%	-3%	-1%	0%	-3%

Note: The percentage change is not recorded in the above table for groups with fewer than 10 placed applicants in that cycle or in the 2018 cycle.

S.41 Placed applicants from Scotland by sex: 13 days after A level results day

Placed applicants: absolute change relative to 2018 cycle totals

Applicant Status	Sex	2010	2011	2012	2013	2014	2015	2016	2017	2018	2019
Placed	Men	-1,520	-1,690	-1,670	-1,420	-1,440	-670	-70	-200	0	-650
	Women	-4,540	-4,860	-4,850	-4,590	-3,920	-1,820	-1,090	-260	0	-520
	All	-6,070	-6,550	-6,520	-6,010	-5,360	-2,490	-1,150	-460	0	-1,160

S.42 Placed 18 year old applicants from Scotland by sex: 13 days after A level results day

Placed 18 year old applicants: change relative to 2018 cycle totals

Men
Women



Note: The percentage change is not plotted in the above chart for groups with fewer than 30 placed applicants in any one cycle.

S.43 Placed 18 year old applicants from Scotland by sex: 13 days after A level results day

Applicant Status	Sex	2010	2011	2012	2013	2014	2015	2016	2017	2018	2019
Placed	Men	6,350	6,090	6,000	6,050	6,010	5,960	6,030	5,970	5,950	5,520
	Women	8,340	7,890	8,070	8,100	8,300	8,440	8,610	8,670	8,670	8,530
	All	14,690	13,990	14,060	14,140	14,310	14,400	14,640	14,640	14,610	14,050

S.44 Placed 18 year old applicants from Scotland by sex: 13 days after A level results day

Placed 18 year old applicants: change relative to 2018 cycle totals

Applicant Status	Sex	2010	2011	2012	2013	2014	2015	2016	2017	2018	2019
Placed	Men	7%	2%	1%	2%	1%	0%	1%	0%	0%	-7%
	Women	-4%	-9%	-7%	-7%	-4%	-3%	-1%	0%	0%	-2%
	All	1%	-4%	-4%	-3%	-2%	-1%	0%	0%	0%	-4%

Note: The percentage change is not recorded in the above table for groups with fewer than 10 placed applicants in that cycle or in the 2018 cycle.

S.45 Placed 18 year old applicants from Scotland by sex: 13 days after A level results day

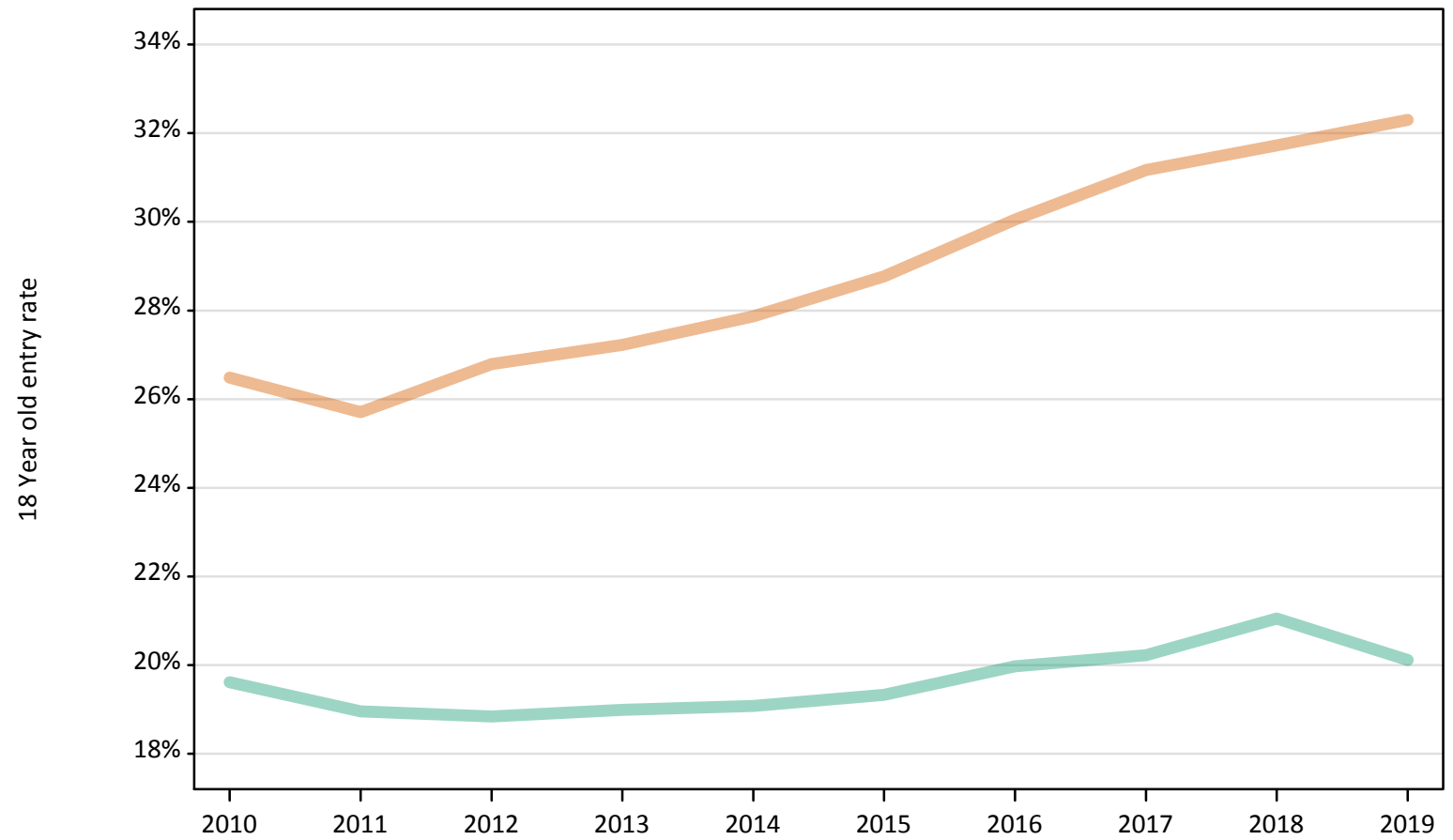
Placed 18 year old applicants: absolute change relative to 2018 cycle totals

Applicant Status	Sex	2010	2011	2012	2013	2014	2015	2016	2017	2018	2019
Placed	Men	410	150	50	100	70	10	90	30	0	-420
	Women	-330	-780	-600	-570	-370	-230	-60	0	0	-140
	All	80	-630	-550	-470	-310	-210	20	30	0	-570

S.46 Placed 18 year old applicants from Scotland by sex: 13 days after A level results day

Placed 18 year old applicants: entry rate

Men
Women



S.47 Placed 18 year old applicants from Scotland by sex: 13 days after A level results day

Placed 18 year old applicants: entry rate

Applicant Status	Sex	2010	2011	2012	2013	2014	2015	2016	2017	2018	2019
Placed	Men	19.6%	19.0%	18.8%	19.0%	19.1%	19.3%	20.0%	20.2%	21.0%	20.1%
	Women	26.5%	25.7%	26.8%	27.2%	27.9%	28.8%	30.1%	31.2%	31.7%	32.3%
	All	23.0%	22.3%	22.7%	23.0%	23.3%	23.9%	24.9%	25.5%	26.3%	26.1%

S.48 Placed 18 year old applicants from Scotland by sex: 13 days after A level results day

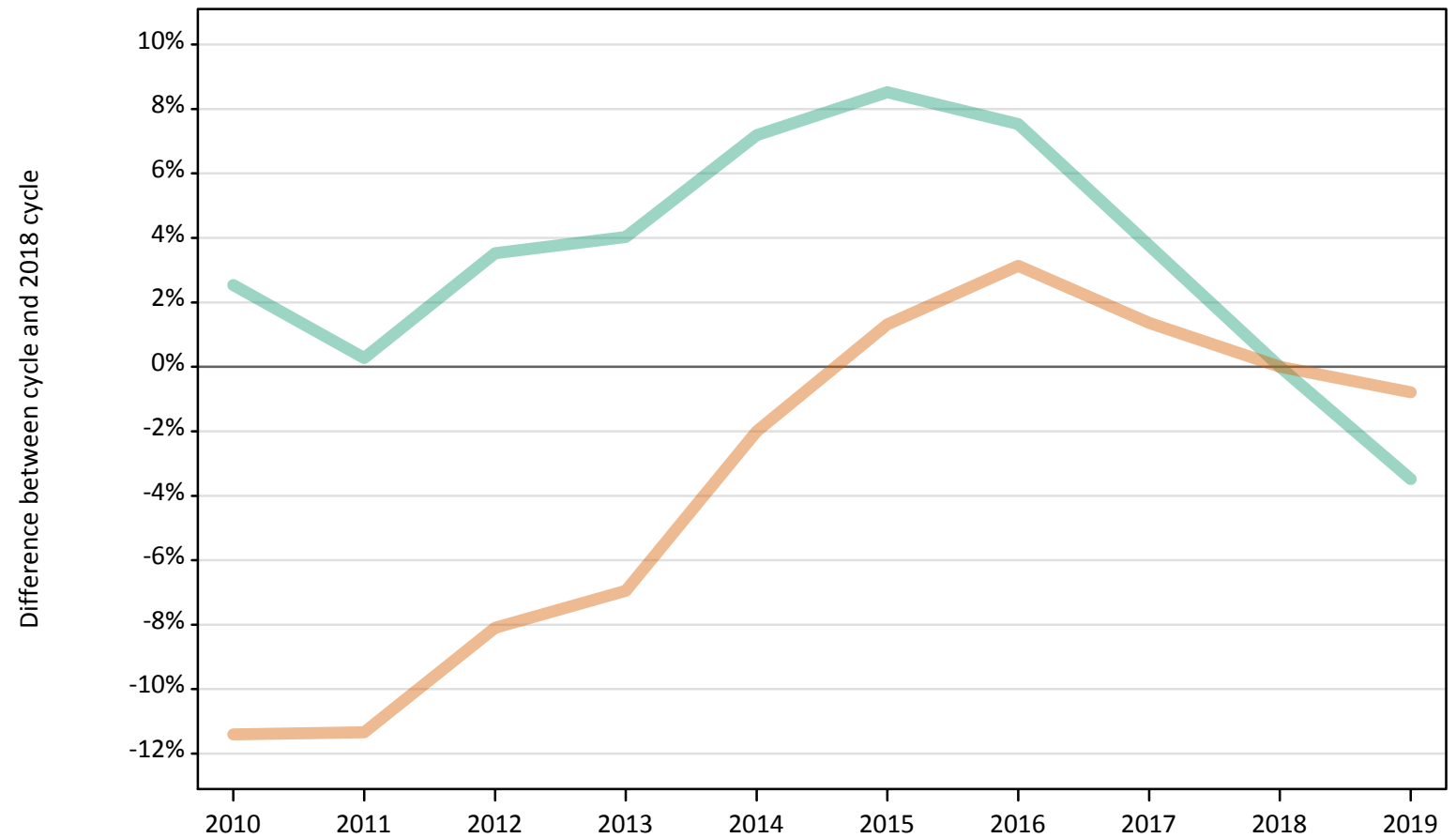
Placed 18 year old applicants: entry rate (indexed to 100 = Men)

Applicant Status	Sex	2010	2011	2012	2013	2014	2015	2016	2017	2018	2019
Placed	Men	100	100	100	100	100	100	100	100	100	100
	Women	135	136	142	143	146	149	150	154	151	161

S.49 Placed applicants from Wales by sex: 13 days after A level results day

Placed applicants: change relative to 2018 cycle totals

Men
Women



Note: The percentage change is not plotted in the above chart for groups with fewer than 30 placed applicants in any one cycle.

S.50 Placed applicants from Wales by sex: 13 days after A level results day

Applicant Status	Sex	2010	2011	2012	2013	2014	2015	2016	2017	2018	2019
Placed	Men	7,560	7,390	7,630	7,670	7,900	8,000	7,930	7,650	7,370	7,120
	Women	9,720	9,730	10,090	10,210	10,760	11,120	11,320	11,130	10,980	10,890
	All	17,280	17,120	17,720	17,880	18,660	19,120	19,250	18,770	18,350	18,000

S.51 Placed applicants from Wales by sex: 13 days after A level results day

Placed applicants: change relative to 2018 cycle totals

Applicant Status	Sex	2010	2011	2012	2013	2014	2015	2016	2017	2018	2019
Placed	Men	3%	0%	4%	4%	7%	9%	8%	4%	0%	-3%
	Women	-11%	-11%	-8%	-7%	-2%	1%	3%	1%	0%	-1%
	All	-6%	-7%	-3%	-3%	2%	4%	5%	2%	0%	-2%

Note: The percentage change is not recorded in the above table for groups with fewer than 10 placed applicants in that cycle or in the 2018 cycle.

S.52 Placed applicants from Wales by sex: 13 days after A level results day

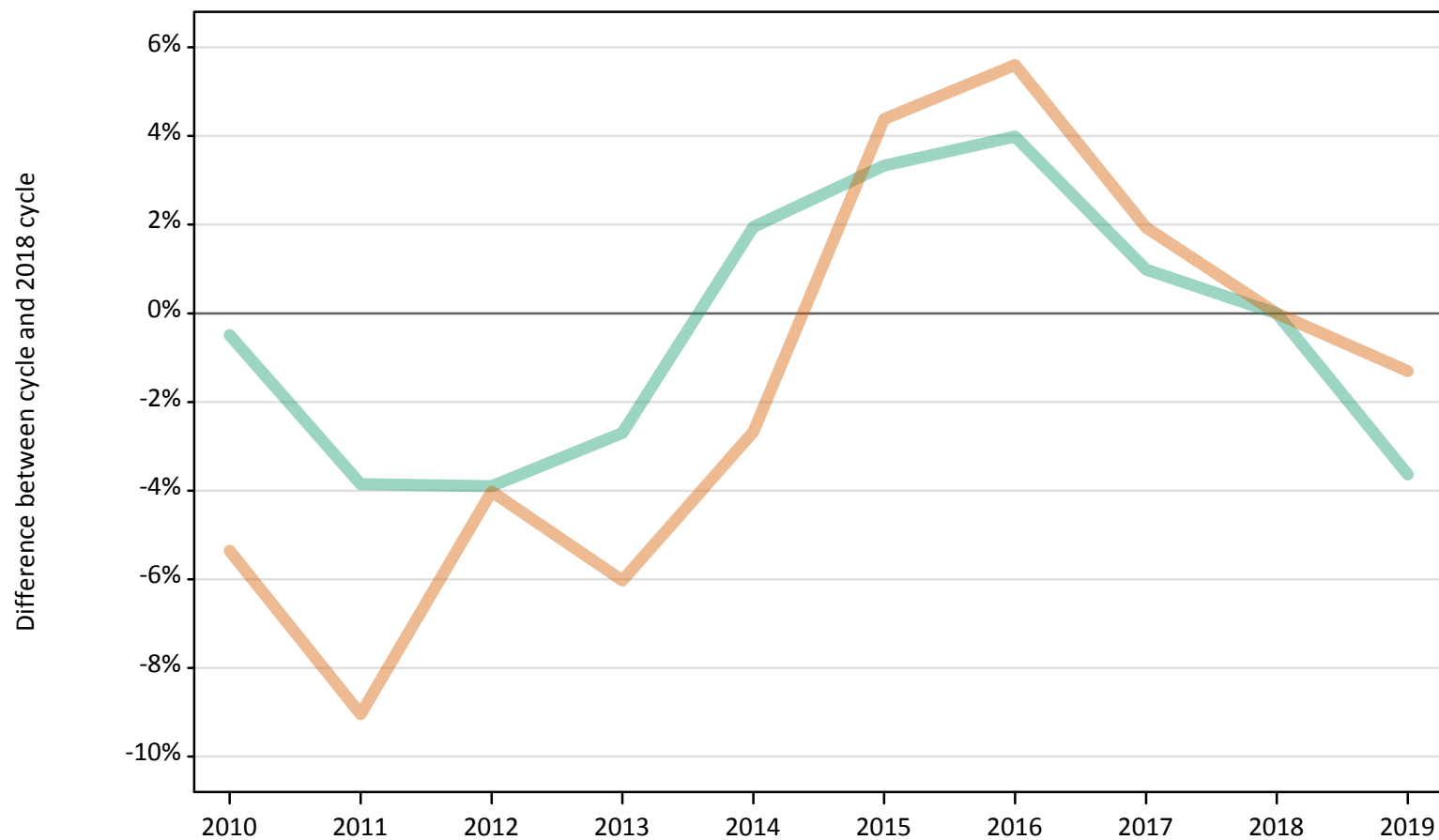
Placed applicants: absolute change relative to 2018 cycle totals

Applicant Status	Sex	2010	2011	2012	2013	2014	2015	2016	2017	2018	2019
Placed	Men	190	20	260	300	530	630	560	280	0	-260
	Women	-1,250	-1,240	-890	-760	-220	150	340	150	0	-90
	All	-1,070	-1,220	-630	-470	310	770	900	430	0	-340

S.53 Placed 18 year old applicants from Wales by sex: 13 days after A level results day

Placed 18 year old applicants: change relative to 2018 cycle totals

Men
Women



Note: The percentage change is not plotted in the above chart for groups with fewer than 30 placed applicants in any one cycle.

S.54 Placed 18 year old applicants from Wales by sex: 13 days after A level results day

Applicant Status	Sex	2010	2011	2012	2013	2014	2015	2016	2017	2018	2019
Placed	Men	4,240	4,100	4,090	4,140	4,340	4,400	4,430	4,300	4,260	4,100
	Women	5,530	5,310	5,600	5,490	5,680	6,100	6,170	5,950	5,840	5,760
	All	9,760	9,410	9,700	9,630	10,030	10,500	10,600	10,250	10,100	9,870

S.55 Placed 18 year old applicants from Wales by sex: 13 days after A level results day

Placed 18 year old applicants: change relative to 2018 cycle totals

Applicant Status	Sex	2010	2011	2012	2013	2014	2015	2016	2017	2018	2019
Placed	Men	-0%	-4%	-4%	-3%	2%	3%	4%	1%	0%	-4%
	Women	-5%	-9%	-4%	-6%	-3%	4%	6%	2%	0%	-1%
	All	-3%	-7%	-4%	-5%	-1%	4%	5%	2%	0%	-2%

Note: The percentage change is not recorded in the above table for groups with fewer than 10 placed applicants in that cycle or in the 2018 cycle.

S.56 Placed 18 year old applicants from Wales by sex: 13 days after A level results day

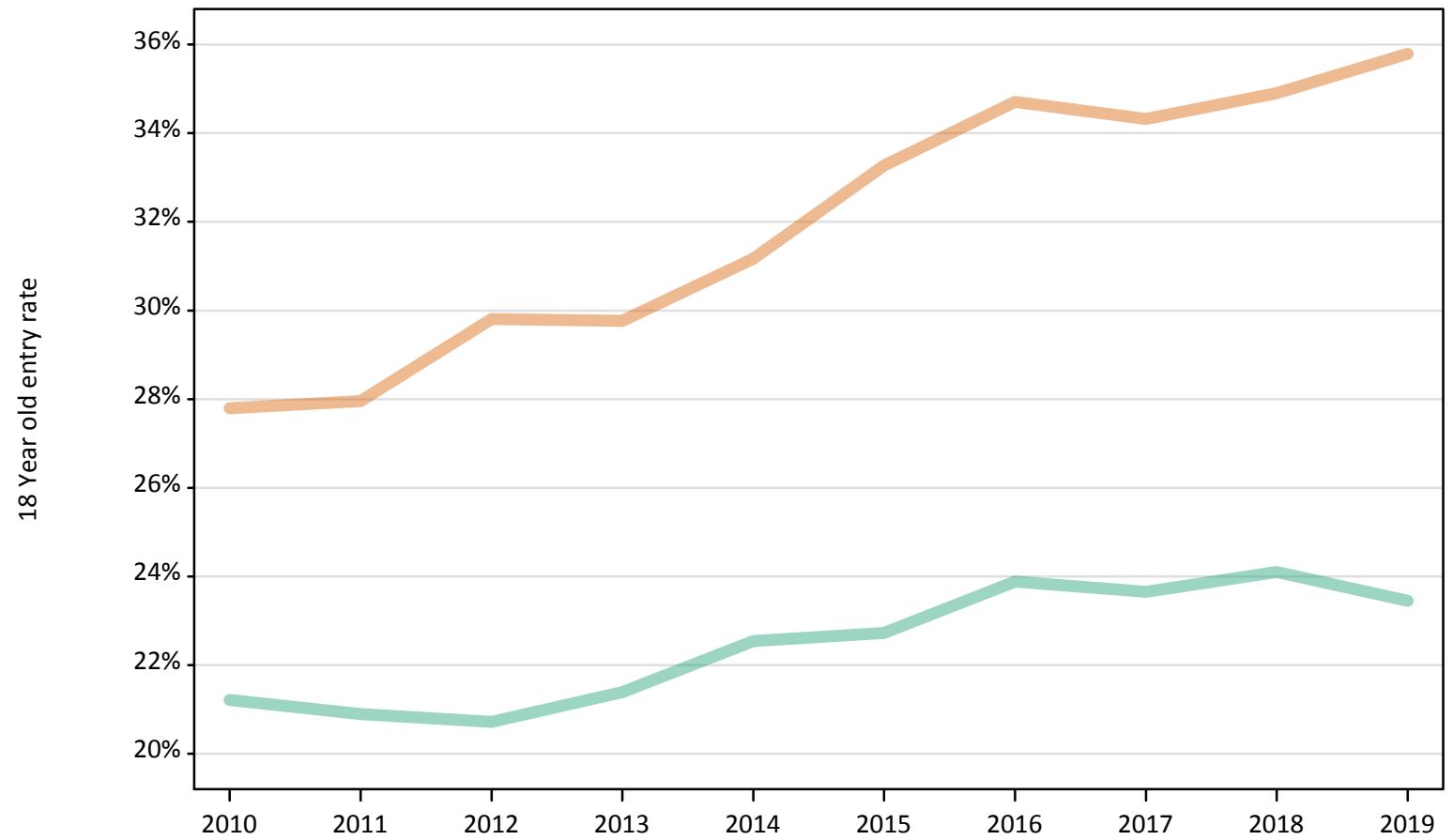
Placed 18 year old applicants: absolute change relative to 2018 cycle totals

Applicant Status	Sex	2010	2011	2012	2013	2014	2015	2016	2017	2018	2019
Placed	Men	-20	-160	-170	-120	80	140	170	40	0	-160
	Women	-310	-530	-240	-350	-160	260	330	110	0	-80
	All	-330	-690	-400	-470	-70	400	500	160	0	-230

S.57 Placed 18 year old applicants from Wales by sex: 13 days after A level results day

Placed 18 year old applicants: entry rate

Men
Women



S.58 Placed 18 year old applicants from Wales by sex: 13 days after A level results day

Placed 18 year old applicants: entry rate

Applicant Status	Sex	2010	2011	2012	2013	2014	2015	2016	2017	2018	2019
Placed	Men	21.2%	20.9%	20.7%	21.4%	22.5%	22.7%	23.9%	23.7%	24.1%	23.5%
	Women	27.8%	28.0%	29.8%	29.8%	31.2%	33.3%	34.7%	34.3%	34.9%	35.8%
	All	24.5%	24.4%	25.2%	25.5%	26.7%	27.9%	29.2%	28.9%	29.4%	29.4%

S.59 Placed 18 year old applicants from Wales by sex: 13 days after A level results day

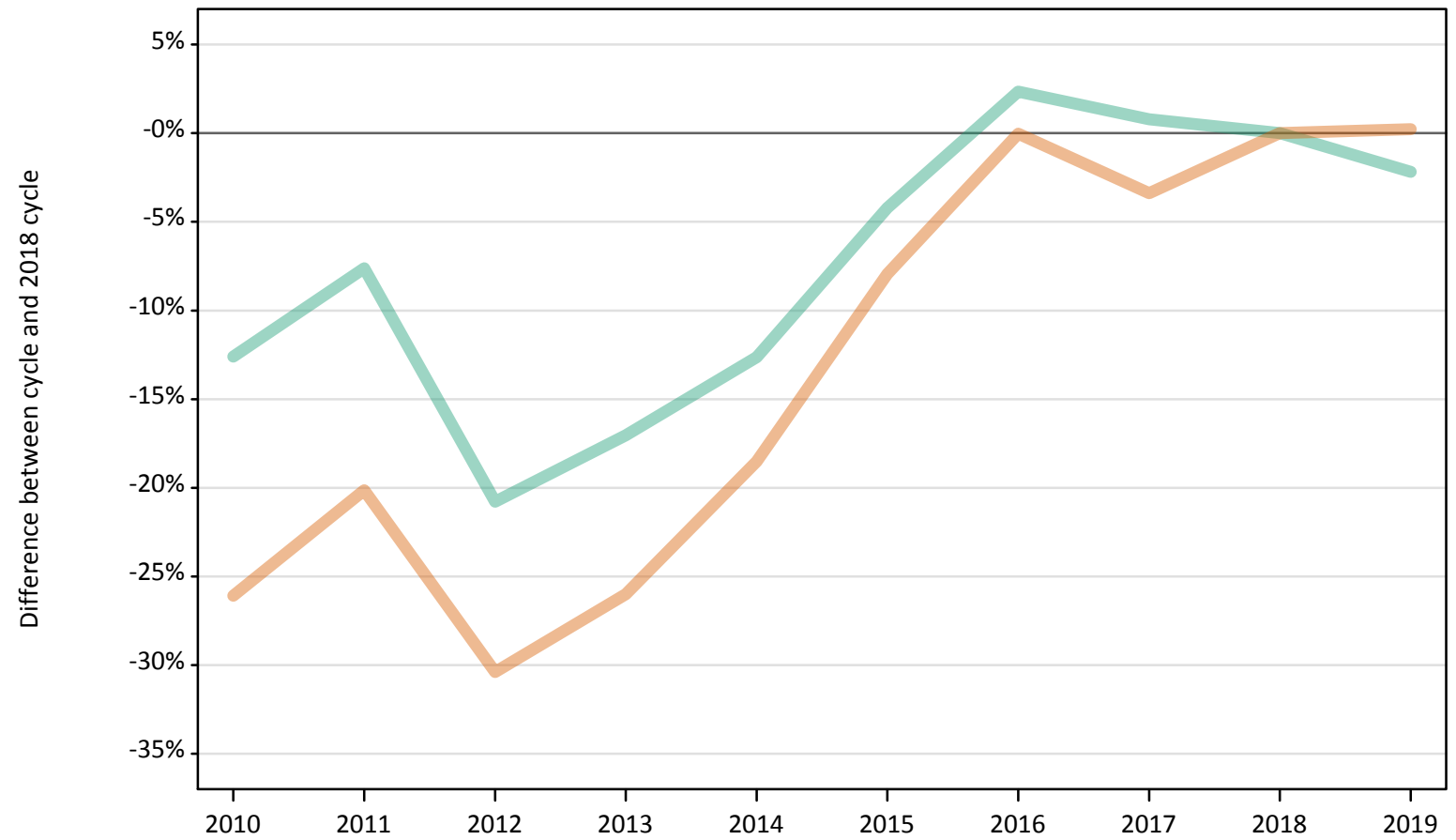
Placed 18 year old applicants: entry rate (indexed to 100 = Men)

Applicant Status	Sex	2010	2011	2012	2013	2014	2015	2016	2017	2018	2019
Placed	Men	100	100	100	100	100	100	100	100	100	100
	Women	131	134	144	139	138	146	145	145	145	153

S.60 Placed applicants from the EU (excluding the UK) by sex: 13 days after A level results day

Placed applicants: change relative to 2018 cycle totals

Men
Women



Note: The percentage change is not plotted in the above chart for groups with fewer than 30 placed applicants in any one cycle.

S.61 Placed applicants from the EU (excluding the UK) by sex: 13 days after A level results day

Applicant Status	Sex	2010	2011	2012	2013	2014	2015	2016	2017	2018	2019
Placed	Men	10,580	11,180	9,590	10,040	10,580	11,590	12,390	12,200	12,110	11,840
	Women	12,730	13,760	11,990	12,750	14,040	15,860	17,220	16,650	17,230	17,270
	All	23,310	24,940	21,580	22,790	24,610	27,450	29,610	28,850	29,330	29,110

S.62 Placed applicants from the EU (excluding the UK) by sex: 13 days after A level results day

Placed applicants: change relative to 2018 cycle totals

Applicant Status	Sex	2010	2011	2012	2013	2014	2015	2016	2017	2018	2019
Placed	Men	-13%	-8%	-21%	-17%	-13%	-4%	2%	1%	0%	-2%
	Women	-26%	-20%	-30%	-26%	-19%	-8%	-0%	-3%	0%	0%
	All	-21%	-15%	-26%	-22%	-16%	-6%	1%	-2%	0%	-1%

Note: The percentage change is not recorded in the above table for groups with fewer than 10 placed applicants in that cycle or in the 2018 cycle.

S.63 Placed applicants from the EU (excluding the UK) by sex: 13 days after A level results day

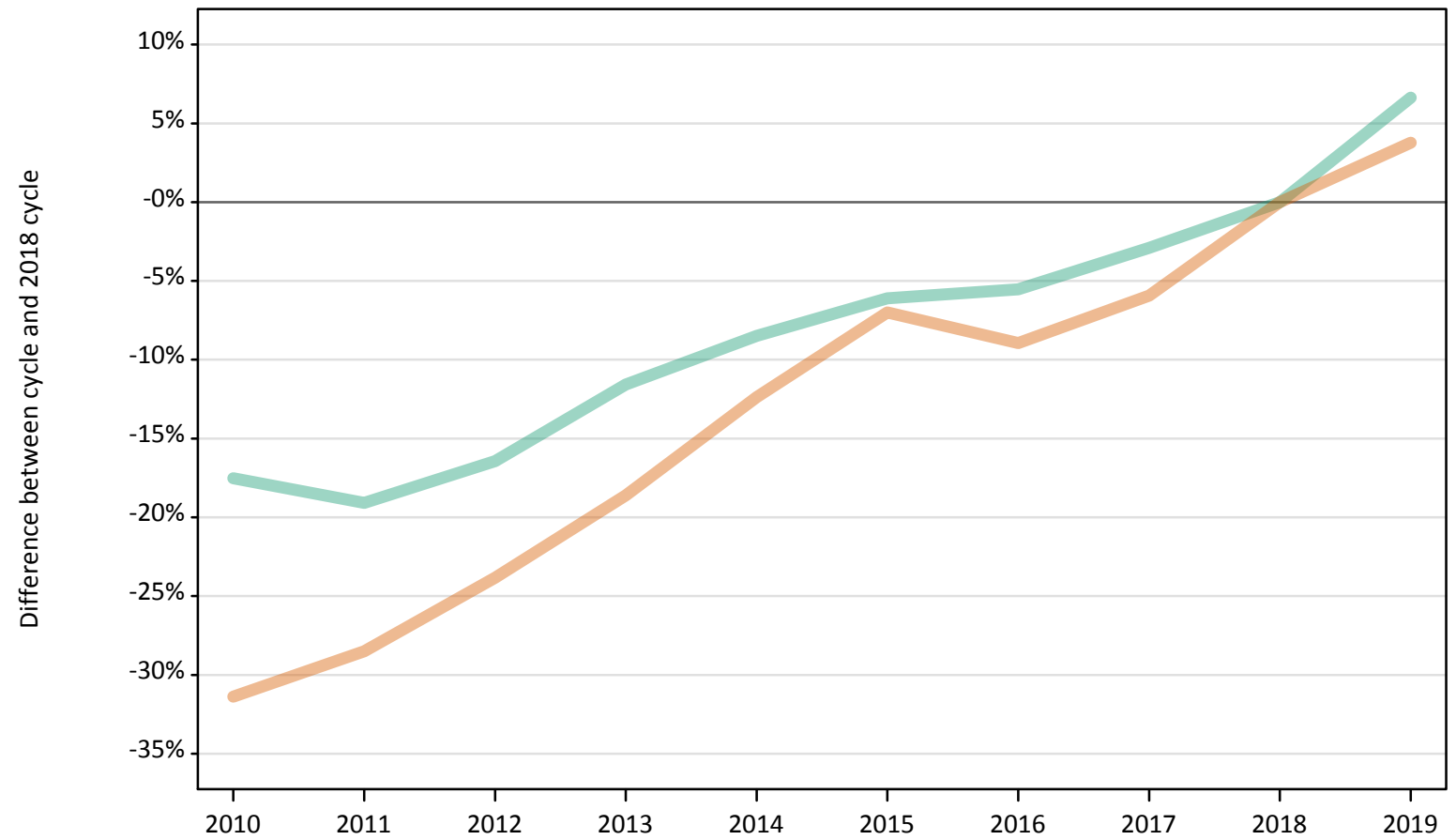
Placed applicants: absolute change relative to 2018 cycle totals

Applicant Status	Sex	2010	2011	2012	2013	2014	2015	2016	2017	2018	2019
Placed	Men	-1,530	-920	-2,520	-2,060	-1,530	-510	280	100	0	-260
	Women	-4,490	-3,470	-5,240	-4,480	-3,190	-1,370	-10	-580	0	40
	All	-6,020	-4,390	-7,750	-6,540	-4,720	-1,880	280	-490	0	-220

S.64 Placed applicants from overseas (not EU) by sex: 13 days after A level results day

Placed applicants: change relative to 2018 cycle totals

Men
Women



Note: The percentage change is not plotted in the above chart for groups with fewer than 30 placed applicants in any one cycle.

S.65 Placed applicants from overseas (not EU) by sex: 13 days after A level results day

Applicant Status	Sex	2010	2011	2012	2013	2014	2015	2016	2017	2018	2019
Placed	Men	13,840	13,580	14,020	14,840	15,360	15,760	15,850	16,290	16,780	17,890
	Women	13,710	14,290	15,220	16,270	17,510	18,590	18,200	18,800	19,980	20,740
	All	27,550	27,870	29,240	31,100	32,870	34,340	34,050	35,090	36,760	38,630

S.66 Placed applicants from overseas (not EU) by sex: 13 days after A level results day

Placed applicants: change relative to 2018 cycle totals

Applicant Status	Sex	2010	2011	2012	2013	2014	2015	2016	2017	2018	2019
Placed	Men	-18%	-19%	-16%	-12%	-8%	-6%	-6%	-3%	0%	7%
	Women	-31%	-28%	-24%	-19%	-12%	-7%	-9%	-6%	0%	4%
	All	-25%	-24%	-20%	-15%	-11%	-7%	-7%	-5%	0%	5%

Note: The percentage change is not recorded in the above table for groups with fewer than 10 placed applicants in that cycle or in the 2018 cycle.

S.67 Placed applicants from overseas (not EU) by sex: 13 days after A level results day

Placed applicants: absolute change relative to 2018 cycle totals

Applicant Status	Sex	2010	2011	2012	2013	2014	2015	2016	2017	2018	2019
Placed	Men	-2,940	-3,200	-2,760	-1,940	-1,420	-1,020	-930	-490	0	1,110
	Women	-6,270	-5,700	-4,760	-3,720	-2,470	-1,400	-1,790	-1,190	0	760
	All	-9,210	-8,900	-7,520	-5,660	-3,900	-2,420	-2,720	-1,680	0	1,870