

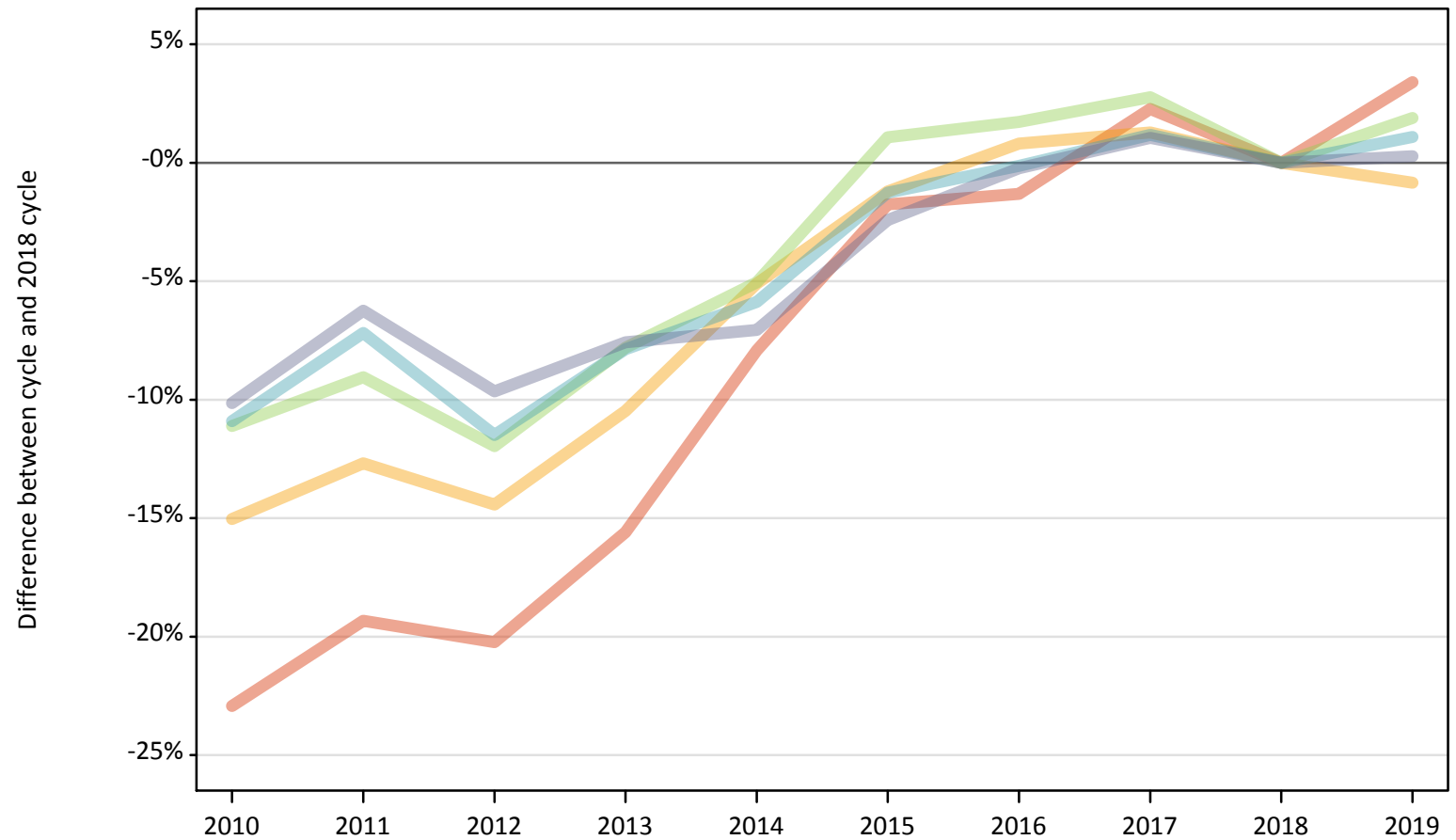
Daily Clearing Analysis: POLAR4

Analysis at 00:05 on Wednesday 28 August 2019 (13 days after A level results day)

P.1 Placed 18 year old applicants from England by POLAR4 quintile: 13 days after A level results day

Placed 18 year old applicants: change relative to 2018 cycle totals

- Quintile 1
- Quintile 2
- Quintile 3
- Quintile 4
- Quintile 5



Note: The percentage change is not plotted in the above chart for groups with fewer than 30 placed applicants in any one cycle.

P.2 Placed 18 year old applicants from England by POLAR4 quintile: 13 days after A level results day

Applicant Status	POLAR4	2010	2011	2012	2013	2014	2015	2016	2017	2018	2019
Placed	Quintile 1	16,910	17,700	17,500	18,520	20,200	21,560	21,660	22,440	21,940	22,690
	Quintile 2	25,980	26,700	26,170	27,370	29,020	30,210	30,830	30,970	30,580	30,320
	Quintile 3	33,130	33,890	32,810	34,350	35,380	37,670	37,910	38,300	37,270	37,970
	Quintile 4	41,310	43,030	41,040	42,710	43,640	45,780	46,300	46,910	46,370	46,870
	Quintile 5	59,360	61,940	59,690	61,060	61,400	64,460	65,910	66,760	66,060	66,240

P.3 Placed 18 year old applicants from England by POLAR4 quintile: 13 days after A level results day

Placed 18 year old applicants: change relative to 2018 cycle totals

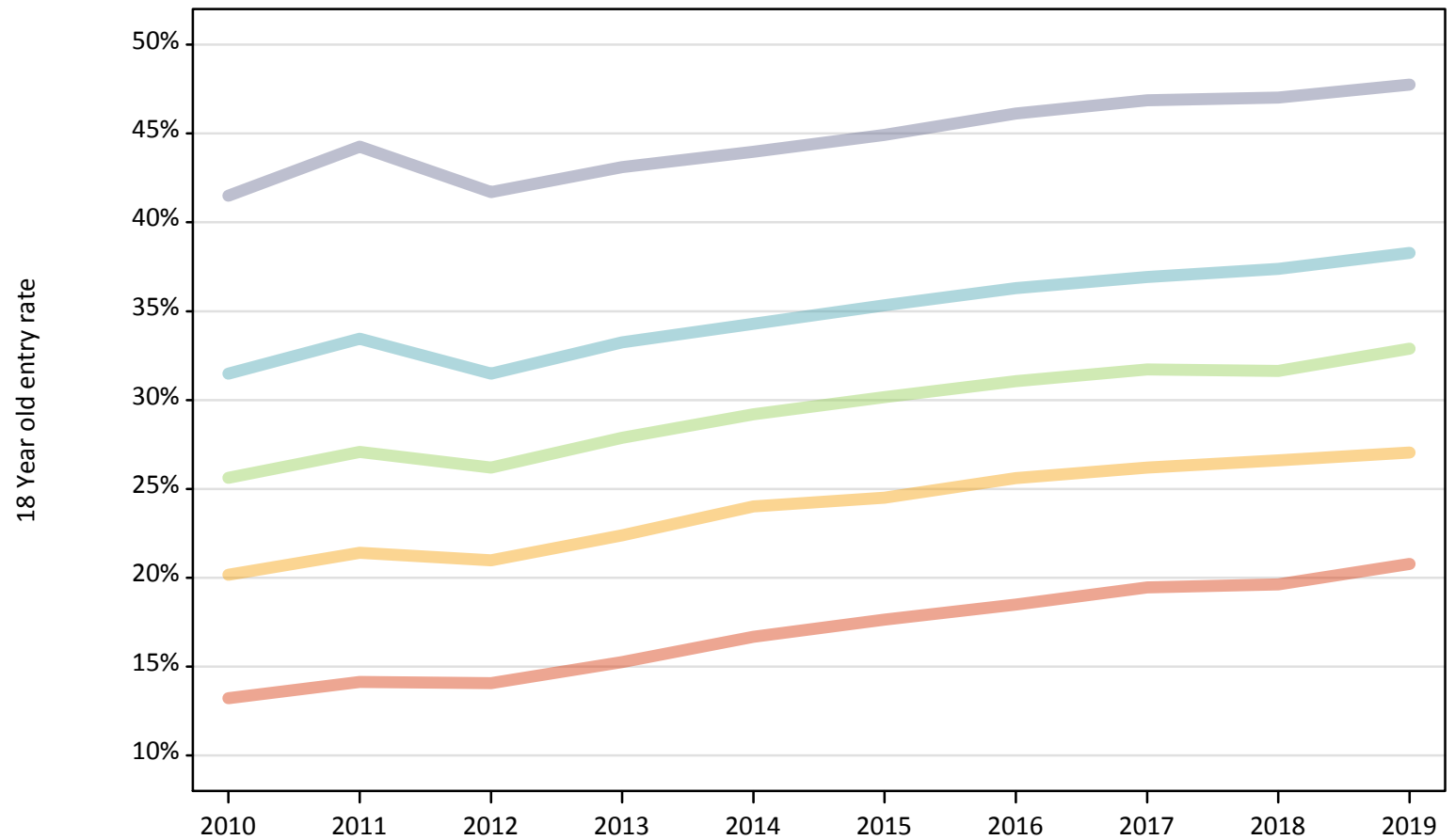
Applicant Status	POLAR4	2010	2011	2012	2013	2014	2015	2016	2017	2018	2019
Placed	Quintile 1	-23%	-19%	-20%	-16%	-8%	-2%	-1%	2%	0%	3%
	Quintile 2	-15%	-13%	-14%	-10%	-5%	-1%	1%	1%	0%	-1%
	Quintile 3	-11%	-9%	-12%	-8%	-5%	1%	2%	3%	0%	2%
	Quintile 4	-11%	-7%	-11%	-8%	-6%	-1%	-0%	1%	0%	1%
	Quintile 5	-10%	-6%	-10%	-8%	-7%	-2%	-0%	1%	0%	0%

Note: The percentage change is not recorded in the above table for groups with fewer than 10 placed applicants in that cycle or in the 2018 cycle.

P.4 Placed 18 year old applicants from England by POLAR4 quintile: 13 days after A level results day

Placed 18 year old applicants: entry rate

- Quintile 1
- Quintile 2
- Quintile 3
- Quintile 4
- Quintile 5



P.5 Placed 18 year old applicants from England by POLAR4 quintile: 13 days after A level results day

Placed 18 year old applicants: entry rate

Applicant Status	POLAR4	2010	2011	2012	2013	2014	2015	2016	2017	2018	2019
Placed	Quintile 1	13.2%	14.1%	14.1%	15.3%	16.7%	17.6%	18.5%	19.5%	19.6%	20.8%
	Quintile 2	20.2%	21.4%	21.0%	22.4%	24.0%	24.5%	25.6%	26.2%	26.6%	27.0%
	Quintile 3	25.6%	27.1%	26.2%	27.9%	29.2%	30.2%	31.1%	31.7%	31.6%	32.9%
	Quintile 4	31.5%	33.5%	31.5%	33.2%	34.3%	35.3%	36.3%	36.9%	37.4%	38.3%
	Quintile 5	41.5%	44.3%	41.7%	43.1%	44.0%	44.9%	46.1%	46.9%	47.0%	47.7%

P.6 Placed 18 year old applicants from England by POLAR4 quintile: 13 days after A level results day

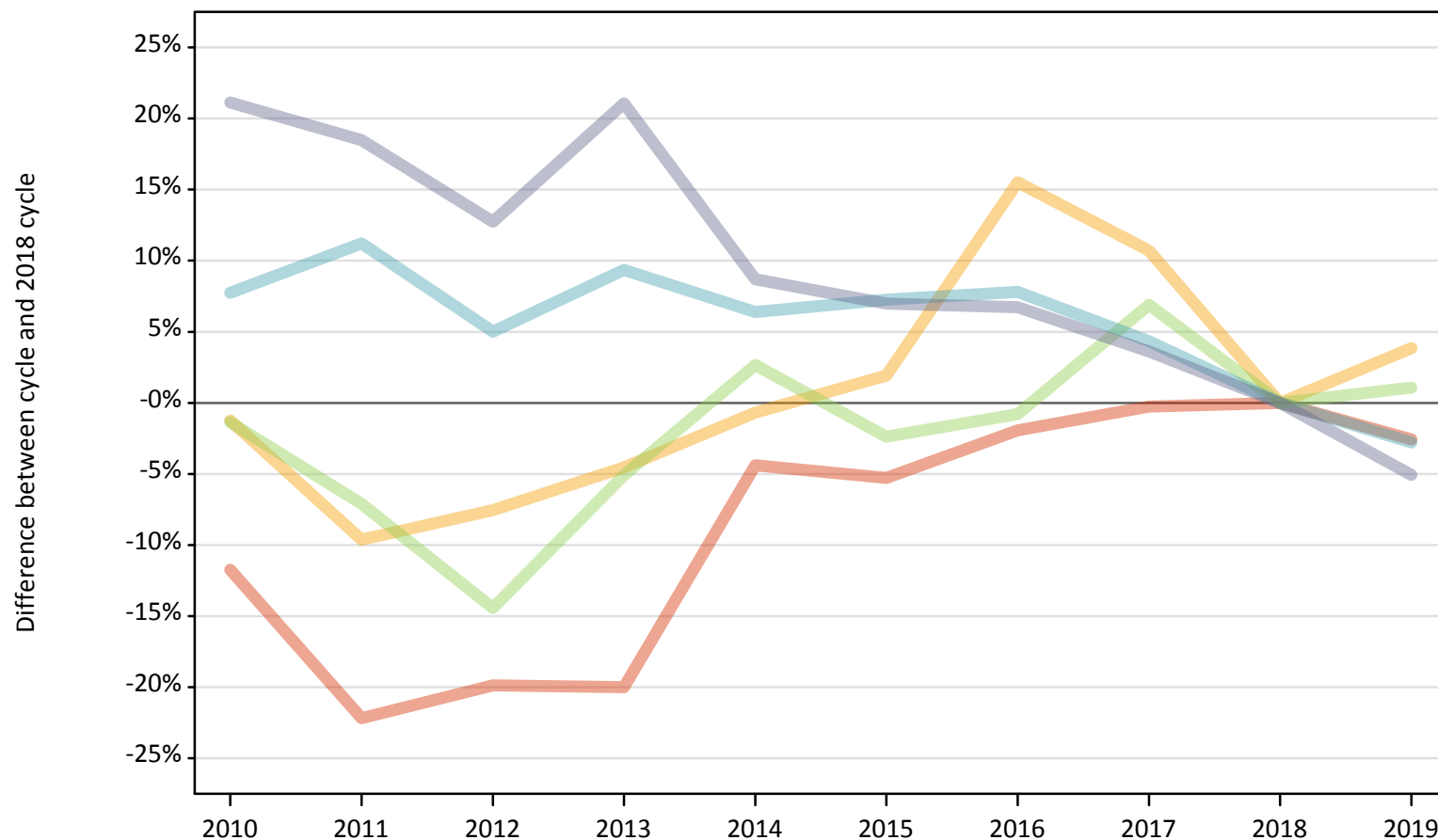
Placed 18 year old applicants: entry rate (indexed to 100 = Quintile 1)

Applicant Status	POLAR4	2010	2011	2012	2013	2014	2015	2016	2017	2018	2019
Placed	Quintile 1	100	100	100	100	100	100	100	100	100	100
	Quintile 2	152	151	149	147	144	139	138	135	136	130
	Quintile 3	194	192	186	183	175	171	168	163	161	158
	Quintile 4	238	237	224	218	206	200	196	190	191	184
	Quintile 5	314	313	297	283	264	255	249	241	240	230

P.7 Placed 18 year old applicants from Northern Ireland by POLAR4 quintile: 13 days after A level results day

Placed 18 year old applicants: change relative to 2018 cycle totals

- Quintile 1
- Quintile 2
- Quintile 3
- Quintile 4
- Quintile 5



Note: The percentage change is not plotted in the above chart for groups with fewer than 30 placed applicants in any one cycle.

P.8 Placed 18 year old applicants from Northern Ireland by POLAR4 quintile: 13 days after A level results day

Applicant Status	POLAR4	2010	2011	2012	2013	2014	2015	2016	2017	2018	2019
Placed	Quintile 1	680	600	620	620	740	730	760	770	780	760
	Quintile 2	720	660	670	700	720	740	840	810	730	760
	Quintile 3	1,370	1,290	1,190	1,320	1,430	1,360	1,380	1,490	1,390	1,410
	Quintile 4	2,210	2,280	2,160	2,240	2,180	2,200	2,210	2,140	2,050	2,000
	Quintile 5	3,820	3,740	3,560	3,820	3,430	3,370	3,370	3,270	3,150	2,990

P.9 Placed 18 year old applicants from Northern Ireland by POLAR4 quintile: 13 days after A level results day

Placed 18 year old applicants: change relative to 2018 cycle totals

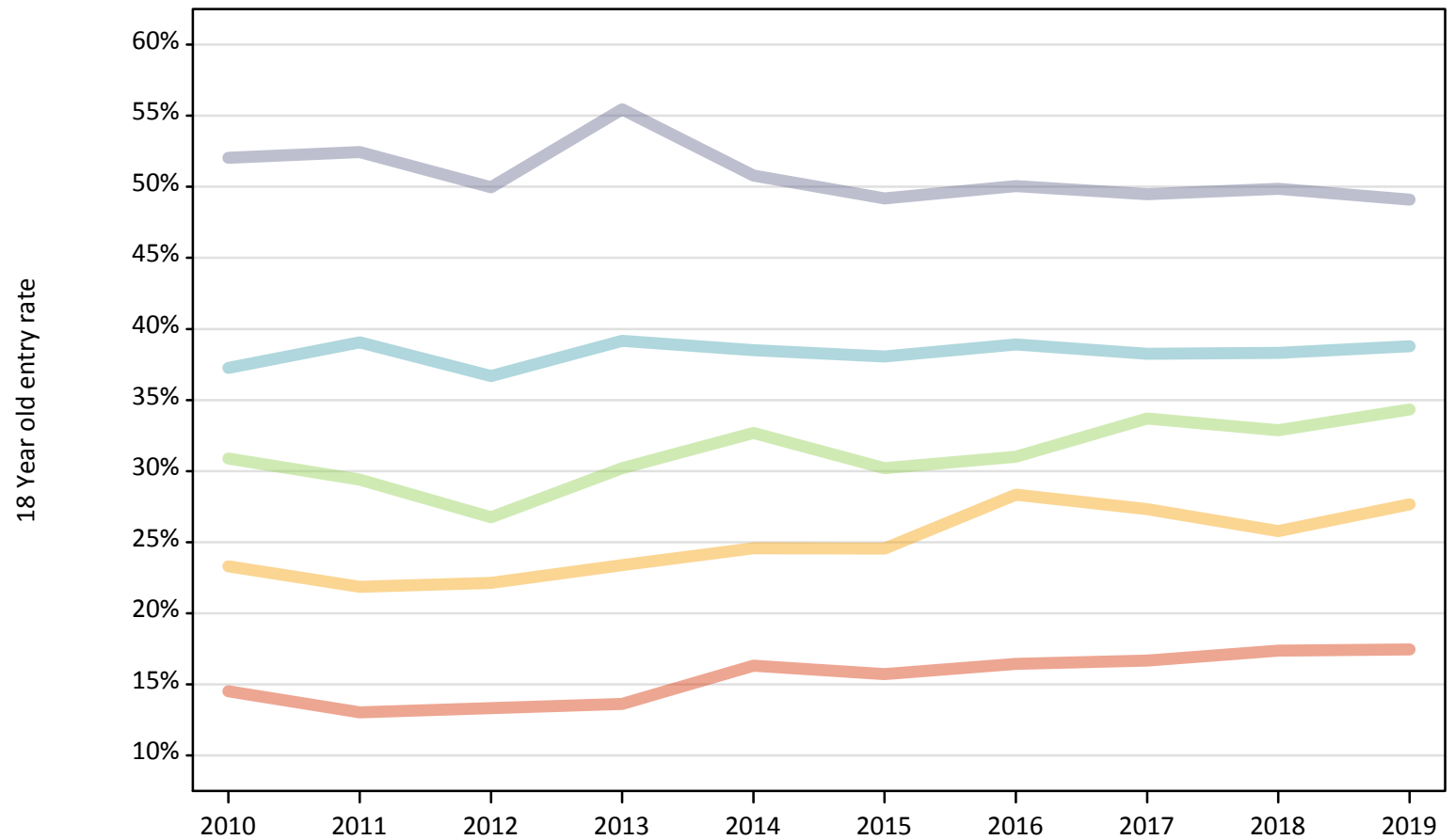
Applicant Status	POLAR4	2010	2011	2012	2013	2014	2015	2016	2017	2018	2019
Placed	Quintile 1	-12%	-22%	-20%	-20%	-4%	-5%	-2%	-0%	0%	-3%
	Quintile 2	-1%	-10%	-8%	-5%	-1%	2%	16%	11%	0%	4%
	Quintile 3	-1%	-7%	-14%	-5%	3%	-2%	-1%	7%	0%	1%
	Quintile 4	8%	11%	5%	9%	6%	7%	8%	4%	0%	-3%
	Quintile 5	21%	18%	13%	21%	9%	7%	7%	4%	0%	-5%

Note: The percentage change is not recorded in the above table for groups with fewer than 10 placed applicants in that cycle or in the 2018 cycle.

P.10 Placed 18 year old applicants from Northern Ireland by POLAR4 quintile: 13 days after A level results day

Placed 18 year old applicants: entry rate

- Quintile 1
- Quintile 2
- Quintile 3
- Quintile 4
- Quintile 5



P.11 Placed 18 year old applicants from Northern Ireland by POLAR4 quintile: 13 days after A level results day

Placed 18 year old applicants: entry rate

Applicant Status	POLAR4	2010	2011	2012	2013	2014	2015	2016	2017	2018	2019
Placed	Quintile 1	14.5%	13.0%	13.3%	13.6%	16.3%	15.7%	16.4%	16.7%	17.4%	17.5%
	Quintile 2	23.3%	21.9%	22.1%	23.4%	24.6%	24.5%	28.3%	27.3%	25.8%	27.7%
	Quintile 3	30.9%	29.4%	26.8%	30.2%	32.7%	30.2%	31.0%	33.7%	32.9%	34.3%
	Quintile 4	37.3%	39.1%	36.7%	39.2%	38.5%	38.1%	38.9%	38.3%	38.3%	38.8%
	Quintile 5	52.0%	52.4%	50.0%	55.5%	50.8%	49.2%	50.0%	49.5%	49.9%	49.1%

P.12 Placed 18 year old applicants from Northern Ireland by POLAR4 quintile: 13 days after A level results day

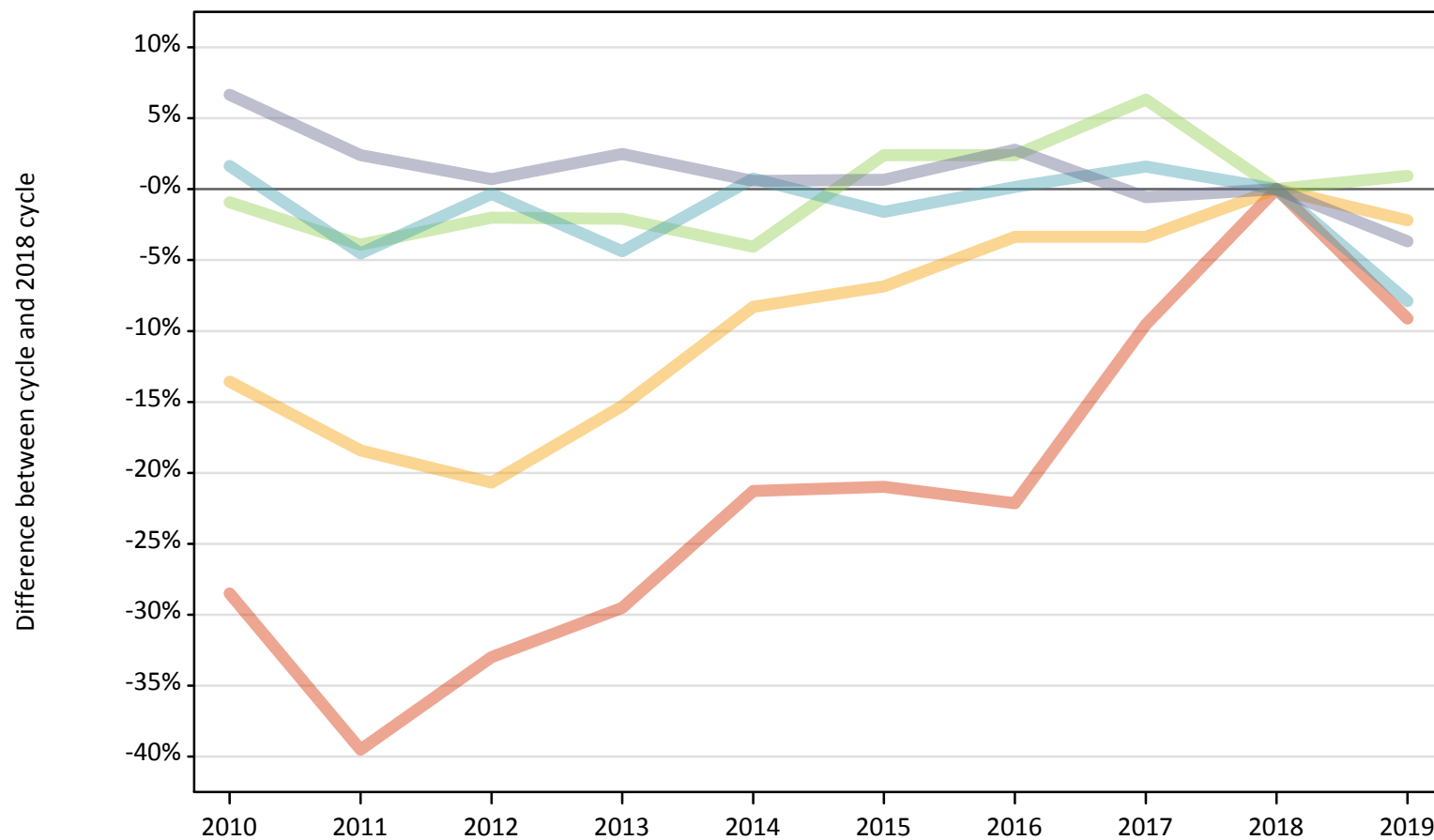
Placed 18 year old applicants: entry rate (indexed to 100 = Quintile 1)

Applicant Status	POLAR4	2010	2011	2012	2013	2014	2015	2016	2017	2018	2019
Placed	Quintile 1	100	100	100	100	100	100	100	100	100	100
	Quintile 2	160	168	166	172	151	156	172	164	148	158
	Quintile 3	213	226	201	222	200	192	189	202	189	197
	Quintile 4	257	300	275	288	236	242	237	229	221	222
	Quintile 5	358	403	374	407	311	313	304	297	287	281

P.13 Placed 18 year old applicants from Scotland by POLAR4 quintile: 13 days after A level results day

Placed 18 year old applicants: change relative to 2018 cycle totals

- Quintile 1
- Quintile 2
- Quintile 3
- Quintile 4
- Quintile 5



Note: The percentage change is not plotted in the above chart for groups with fewer than 30 placed applicants in any one cycle.

P.14 Placed 18 year old applicants from Scotland by POLAR4 quintile: 13 days after A level results day

Applicant Status	POLAR4	2010	2011	2012	2013	2014	2015	2016	2017	2018	2019
Placed	Quintile 1	490	420	460	490	540	550	540	630	690	630
	Quintile 2	1,260	1,190	1,160	1,240	1,340	1,360	1,410	1,410	1,460	1,430
	Quintile 3	2,230	2,160	2,200	2,200	2,160	2,300	2,300	2,390	2,250	2,270
	Quintile 4	3,420	3,210	3,350	3,210	3,390	3,310	3,370	3,420	3,360	3,100
	Quintile 5	7,260	6,970	6,860	6,980	6,850	6,850	7,000	6,770	6,810	6,560

P.15 Placed 18 year old applicants from Scotland by POLAR4 quintile: 13 days after A level results day

Placed 18 year old applicants: change relative to 2018 cycle totals

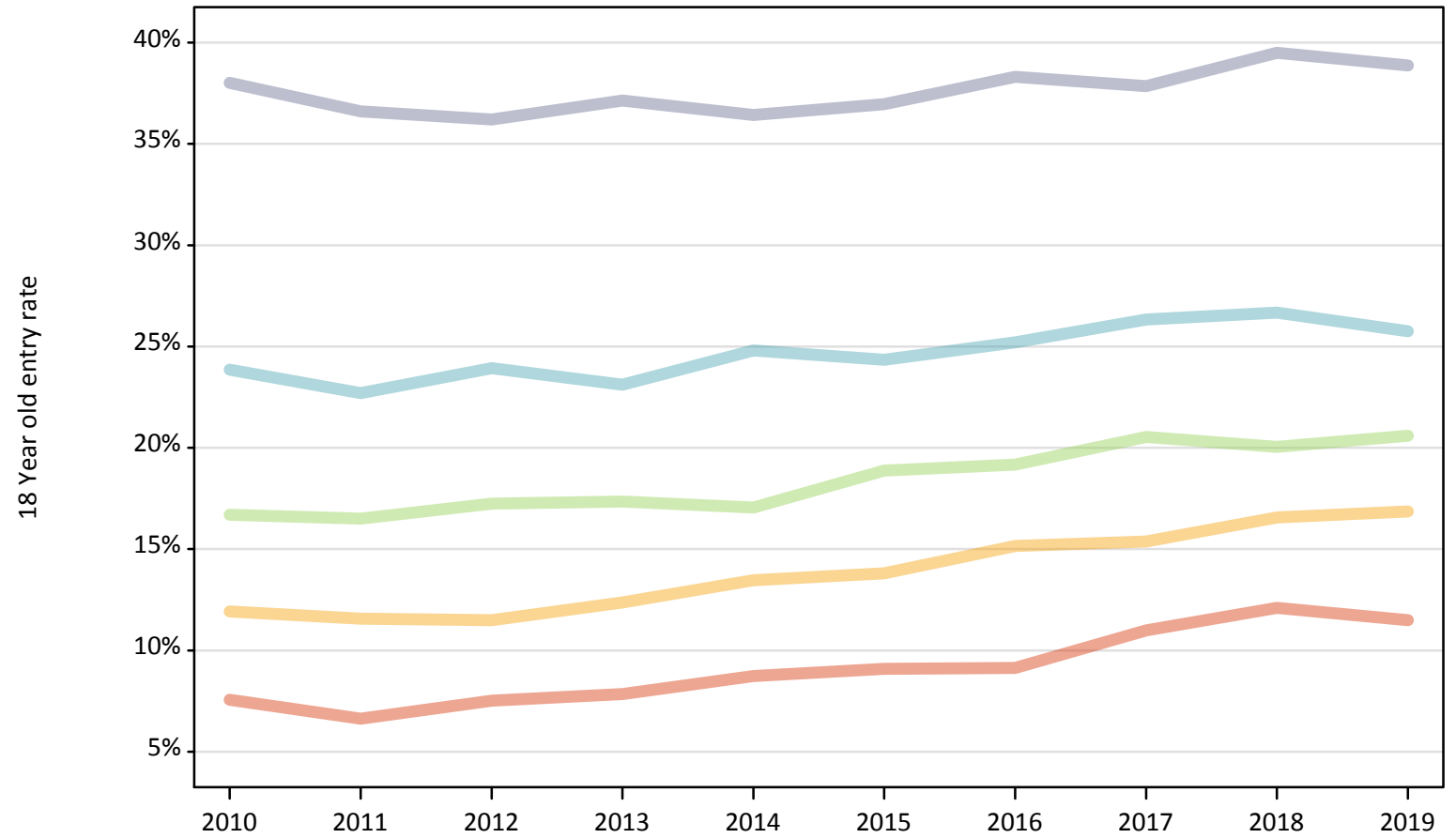
Applicant Status	POLAR4	2010	2011	2012	2013	2014	2015	2016	2017	2018	2019
Placed	Quintile 1	-29%	-40%	-33%	-30%	-21%	-21%	-22%	-10%	0%	-9%
	Quintile 2	-14%	-18%	-21%	-15%	-8%	-7%	-3%	-3%	0%	-2%
	Quintile 3	-1%	-4%	-2%	-2%	-4%	2%	2%	6%	0%	1%
	Quintile 4	2%	-5%	-0%	-4%	1%	-2%	0%	2%	0%	-8%
	Quintile 5	7%	2%	1%	2%	1%	1%	3%	-1%	0%	-4%

Note: The percentage change is not recorded in the above table for groups with fewer than 10 placed applicants in that cycle or in the 2018 cycle.

P.16 Placed 18 year old applicants from Scotland by POLAR4 quintile: 13 days after A level results day

Placed 18 year old applicants: entry rate

- Quintile 1
- Quintile 2
- Quintile 3
- Quintile 4
- Quintile 5



P.17 Placed 18 year old applicants from Scotland by POLAR4 quintile: 13 days after A level results day

Placed 18 year old applicants: entry rate

Applicant Status	POLAR4	2010	2011	2012	2013	2014	2015	2016	2017	2018	2019
Placed	Quintile 1	7.6%	6.6%	7.5%	7.9%	8.7%	9.1%	9.1%	11.0%	12.1%	11.5%
	Quintile 2	11.9%	11.6%	11.5%	12.4%	13.5%	13.8%	15.2%	15.4%	16.6%	16.9%
	Quintile 3	16.7%	16.5%	17.2%	17.4%	17.1%	18.9%	19.2%	20.5%	20.0%	20.6%
	Quintile 4	23.9%	22.7%	23.9%	23.1%	24.8%	24.3%	25.2%	26.3%	26.7%	25.8%
	Quintile 5	38.0%	36.6%	36.2%	37.1%	36.4%	37.0%	38.3%	37.9%	39.5%	38.9%

P.18 Placed 18 year old applicants from Scotland by POLAR4 quintile: 13 days after A level results day

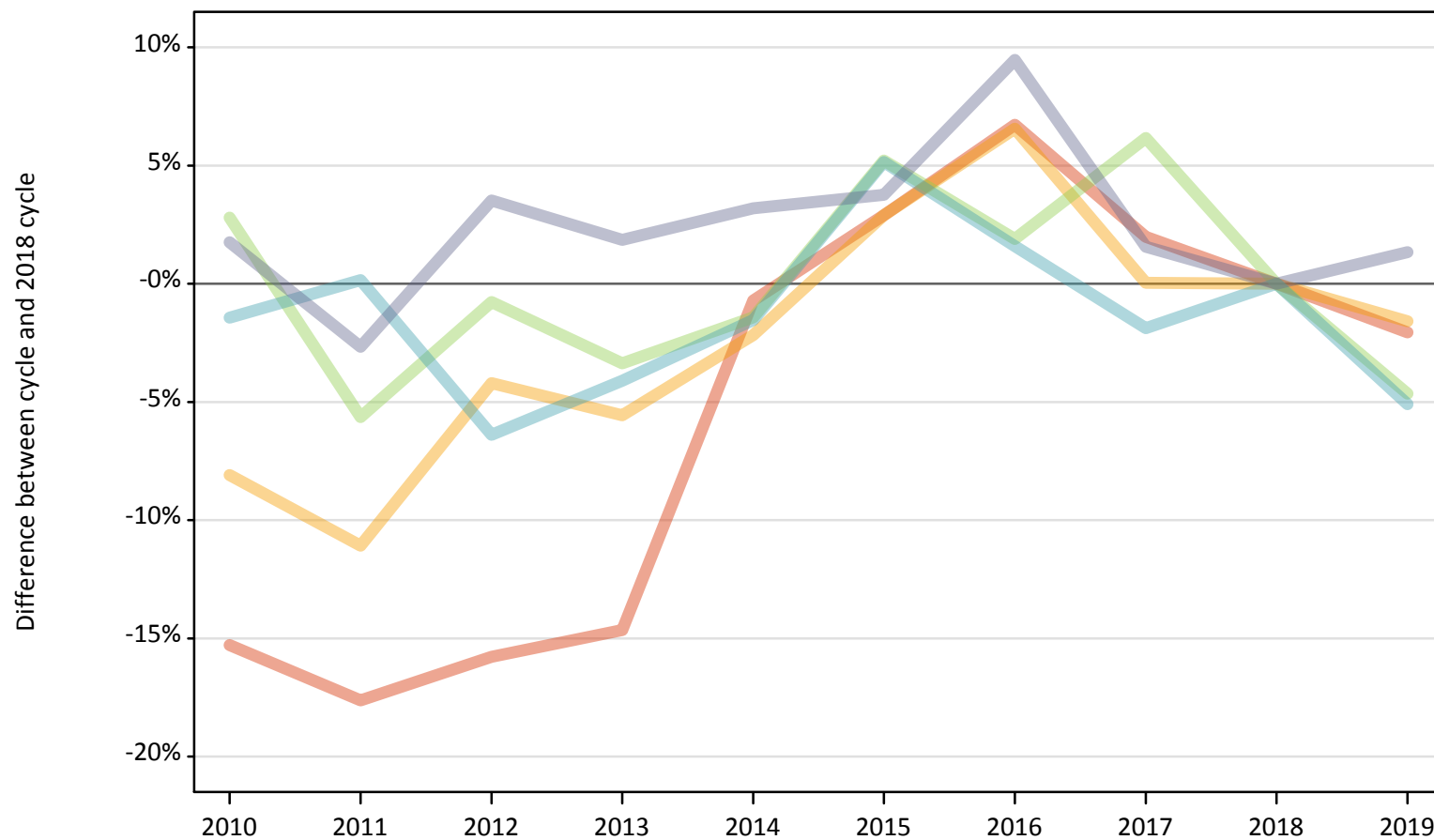
Placed 18 year old applicants: entry rate (indexed to 100 = Quintile 1)

Applicant Status	POLAR4	2010	2011	2012	2013	2014	2015	2016	2017	2018	2019
Placed	Quintile 1	100	100	100	100	100	100	100	100	100	100
	Quintile 2	158	175	153	157	154	152	166	140	137	147
	Quintile 3	221	249	229	221	195	208	210	187	166	179
	Quintile 4	316	342	318	294	284	268	276	240	221	224
	Quintile 5	503	552	482	473	417	406	419	345	327	338

P.19 Placed 18 year old applicants from Wales by POLAR4 quintile: 13 days after A level results day

Placed 18 year old applicants: change relative to 2018 cycle totals

- Quintile 1
- Quintile 2
- Quintile 3
- Quintile 4
- Quintile 5



Note: The percentage change is not plotted in the above chart for groups with fewer than 30 placed applicants in any one cycle.

P.20 Placed 18 year old applicants from Wales by POLAR4 quintile: 13 days after A level results day

Applicant Status	POLAR4	2010	2011	2012	2013	2014	2015	2016	2017	2018	2019
Placed	Quintile 1	1,200	1,160	1,190	1,210	1,400	1,450	1,510	1,440	1,410	1,380
	Quintile 2	2,030	1,970	2,120	2,090	2,160	2,280	2,360	2,210	2,210	2,180
	Quintile 3	2,390	2,190	2,300	2,240	2,290	2,440	2,370	2,460	2,320	2,210
	Quintile 4	1,990	2,020	1,890	1,940	1,990	2,120	2,050	1,980	2,020	1,920
	Quintile 5	2,140	2,050	2,180	2,140	2,170	2,180	2,300	2,130	2,100	2,130

P.21 Placed 18 year old applicants from Wales by POLAR4 quintile: 13 days after A level results day

Placed 18 year old applicants: change relative to 2018 cycle totals

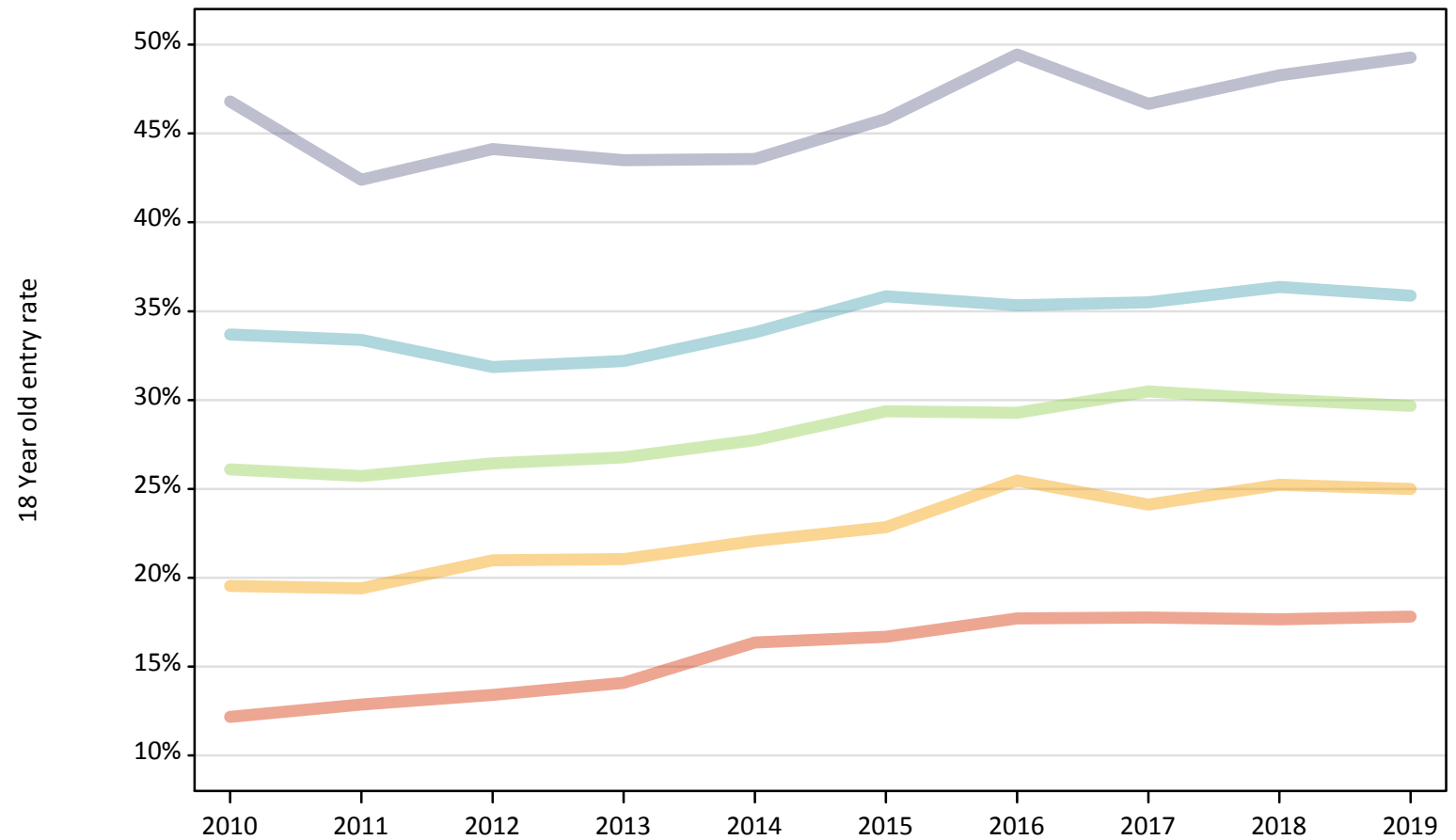
Applicant Status	POLAR4	2010	2011	2012	2013	2014	2015	2016	2017	2018	2019
Placed	Quintile 1	-15%	-18%	-16%	-15%	-1%	3%	7%	2%	0%	-2%
	Quintile 2	-8%	-11%	-4%	-6%	-2%	3%	7%	0%	0%	-2%
	Quintile 3	3%	-6%	-1%	-3%	-1%	5%	2%	6%	0%	-5%
	Quintile 4	-1%	0%	-6%	-4%	-2%	5%	2%	-2%	0%	-5%
	Quintile 5	2%	-3%	4%	2%	3%	4%	9%	2%	0%	1%

Note: The percentage change is not recorded in the above table for groups with fewer than 10 placed applicants in that cycle or in the 2018 cycle.

P.22 Placed 18 year old applicants from Wales by POLAR4 quintile: 13 days after A level results day

Placed 18 year old applicants: entry rate

- Quintile 1
- Quintile 2
- Quintile 3
- Quintile 4
- Quintile 5



P.23 Placed 18 year old applicants from Wales by POLAR4 quintile: 13 days after A level results day

Placed 18 year old applicants: entry rate

Applicant Status	POLAR4	2010	2011	2012	2013	2014	2015	2016	2017	2018	2019
Placed	Quintile 1	12.2%	12.9%	13.4%	14.1%	16.4%	16.7%	17.7%	17.8%	17.7%	17.8%
	Quintile 2	19.5%	19.4%	21.0%	21.0%	22.1%	22.8%	25.5%	24.1%	25.2%	25.0%
	Quintile 3	26.1%	25.7%	26.4%	26.8%	27.7%	29.4%	29.3%	30.5%	30.0%	29.7%
	Quintile 4	33.7%	33.4%	31.8%	32.2%	33.8%	35.8%	35.3%	35.5%	36.4%	35.9%
	Quintile 5	46.8%	42.4%	44.1%	43.5%	43.6%	45.8%	49.5%	46.7%	48.3%	49.3%

P.24 Placed 18 year old applicants from Wales by POLAR4 quintile: 13 days after A level results day

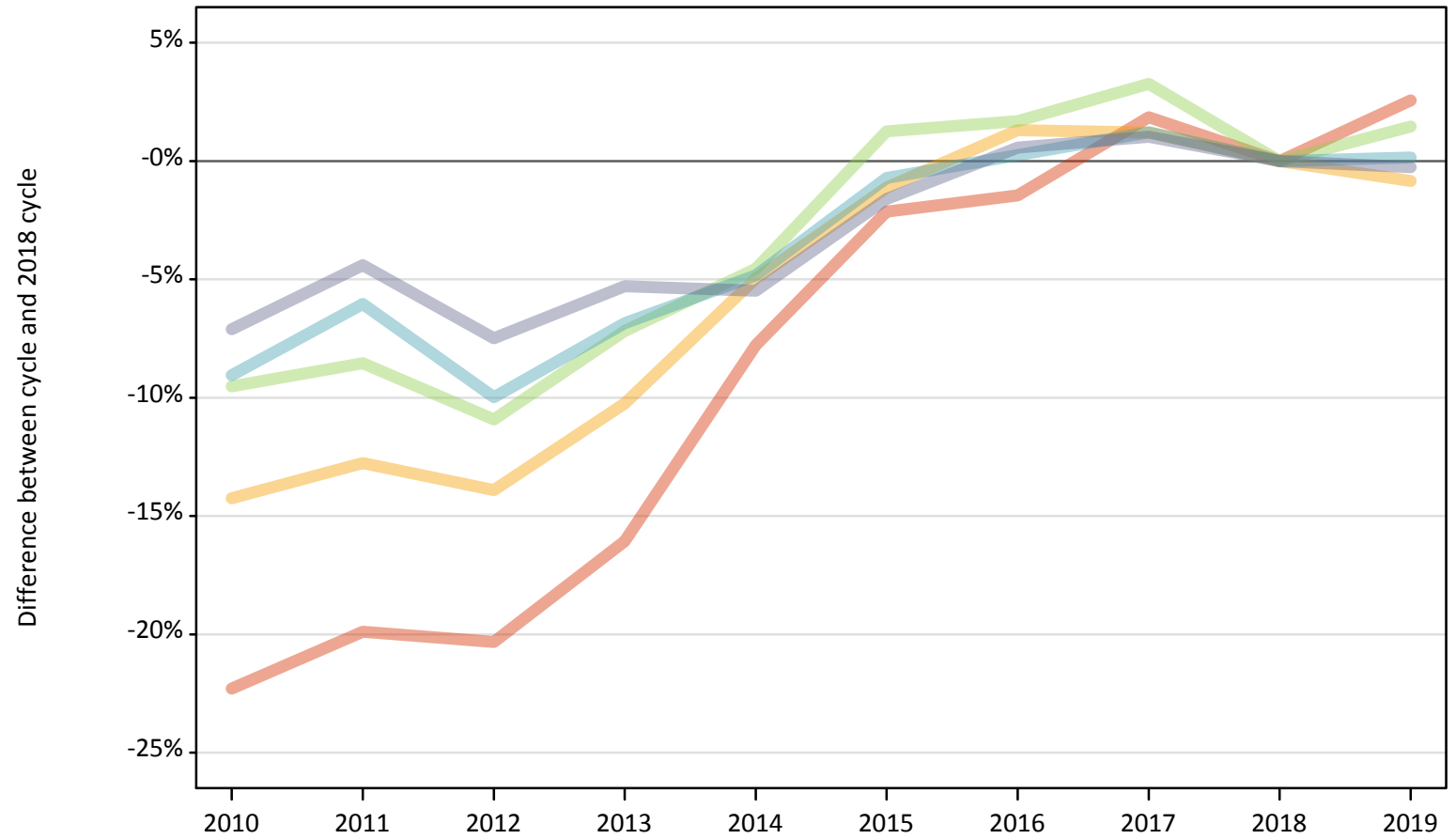
Placed 18 year old applicants: entry rate (indexed to 100 = Quintile 1)

Applicant Status	POLAR4	2010	2011	2012	2013	2014	2015	2016	2017	2018	2019
Placed	Quintile 1	100	100	100	100	100	100	100	100	100	100
	Quintile 2	160	151	157	149	135	137	144	136	143	140
	Quintile 3	214	200	197	190	170	176	165	172	170	167
	Quintile 4	277	260	238	229	207	215	200	200	206	201
	Quintile 5	384	330	329	309	266	275	279	263	273	277

P.25 Placed 18 year old applicants from the UK by POLAR4 quintile: 13 days after A level results day

Placed 18 year old applicants: change relative to 2018 cycle totals

- Quintile 1
- Quintile 2
- Quintile 3
- Quintile 4
- Quintile 5



Note: The percentage change is not plotted in the above chart for groups with fewer than 30 placed applicants in any one cycle.

P.26 Placed 18 year old applicants from the UK by POLAR4 quintile: 13 days after A level results day

Applicant Status	POLAR4	2010	2011	2012	2013	2014	2015	2016	2017	2018	2019
Placed	Quintile 1	19,290	19,890	19,780	20,840	22,890	24,290	24,460	25,280	24,820	25,460
	Quintile 2	29,990	30,510	30,120	31,400	33,240	34,590	35,440	35,400	34,980	34,680
	Quintile 3	39,110	39,530	38,510	40,120	41,260	43,770	43,960	44,640	43,230	43,860
	Quintile 4	48,930	50,550	48,430	50,110	51,200	53,410	53,930	54,450	53,800	53,880
	Quintile 5	72,580	74,690	72,280	73,990	73,840	76,870	78,570	78,930	78,120	77,920

P.27 Placed 18 year old applicants from the UK by POLAR4 quintile: 13 days after A level results day

Placed 18 year old applicants: change relative to 2018 cycle totals

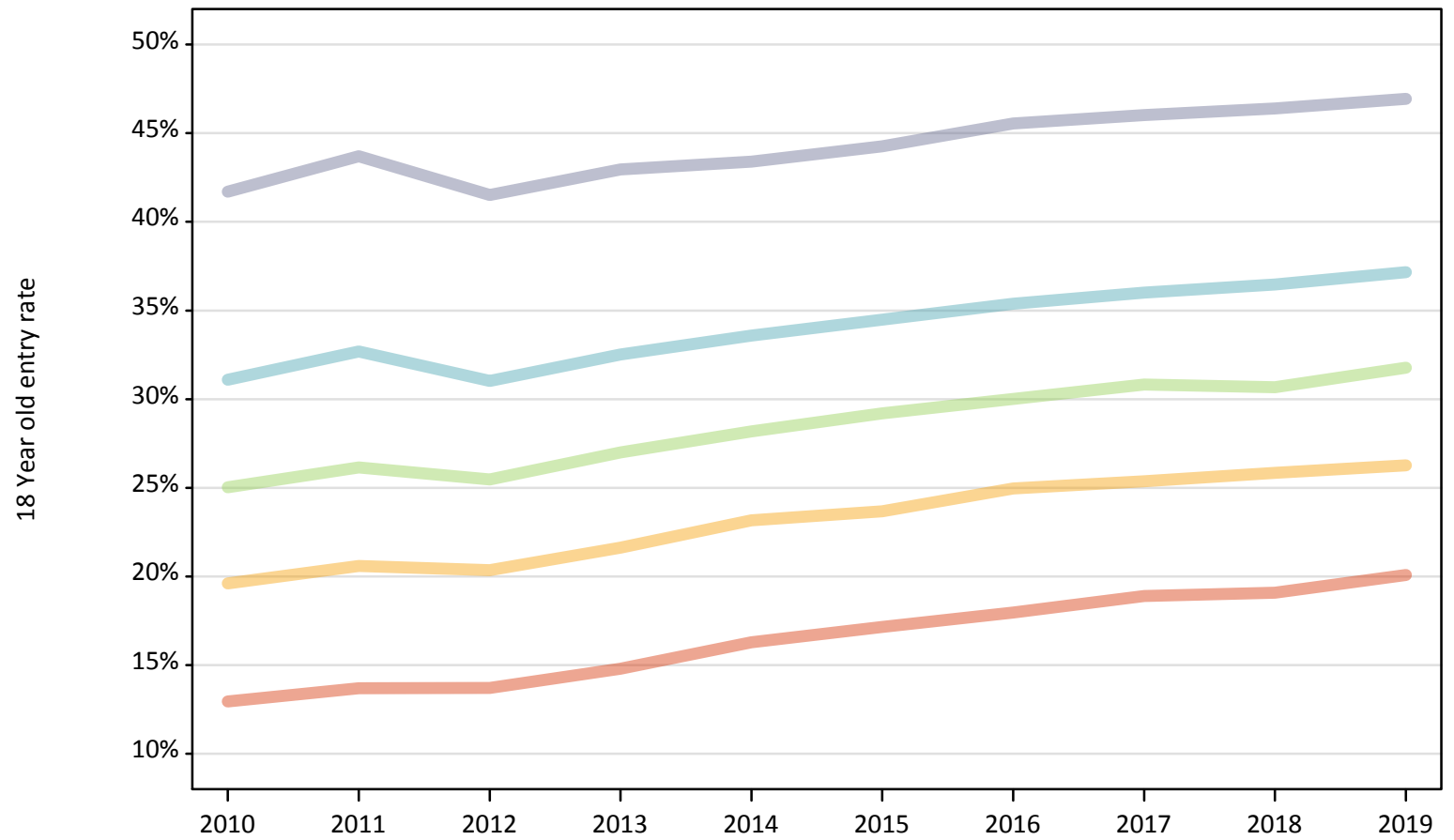
Applicant Status	POLAR4	2010	2011	2012	2013	2014	2015	2016	2017	2018	2019
Placed	Quintile 1	-22%	-20%	-20%	-16%	-8%	-2%	-1%	2%	0%	3%
	Quintile 2	-14%	-13%	-14%	-10%	-5%	-1%	1%	1%	0%	-1%
	Quintile 3	-10%	-9%	-11%	-7%	-5%	1%	2%	3%	0%	1%
	Quintile 4	-9%	-6%	-10%	-7%	-5%	-1%	0%	1%	0%	0%
	Quintile 5	-7%	-4%	-7%	-5%	-5%	-2%	1%	1%	0%	-0%

Note: The percentage change is not recorded in the above table for groups with fewer than 10 placed applicants in that cycle or in the 2018 cycle.

P.28 Placed 18 year old applicants from the UK by POLAR4 quintile: 13 days after A level results day

Placed 18 year old applicants: entry rate

- Quintile 1
- Quintile 2
- Quintile 3
- Quintile 4
- Quintile 5



P.29 Placed 18 year old applicants from the UK by POLAR4 quintile: 13 days after A level results day

Placed 18 year old applicants: entry rate

Applicant Status	POLAR4	2010	2011	2012	2013	2014	2015	2016	2017	2018	2019
Placed	Quintile 1	12.9%	13.7%	13.7%	14.8%	16.3%	17.2%	18.0%	18.9%	19.1%	20.1%
	Quintile 2	19.6%	20.6%	20.4%	21.6%	23.2%	23.7%	25.0%	25.4%	25.8%	26.3%
	Quintile 3	25.0%	26.2%	25.5%	27.0%	28.2%	29.2%	30.0%	30.8%	30.7%	31.8%
	Quintile 4	31.1%	32.7%	31.0%	32.5%	33.6%	34.5%	35.4%	36.0%	36.5%	37.2%
	Quintile 5	41.7%	43.7%	41.5%	43.0%	43.4%	44.3%	45.5%	46.0%	46.4%	46.9%

P.30 Placed 18 year old applicants from the UK by POLAR4 quintile: 13 days after A level results day

Placed 18 year old applicants: entry rate (indexed to 100 = Quintile 1)

Applicant Status	POLAR4	2010	2011	2012	2013	2014	2015	2016	2017	2018	2019
Placed	Quintile 1	100	100	100	100	100	100	100	100	100	100
	Quintile 2	152	150	148	146	142	138	139	134	135	131
	Quintile 3	193	191	186	182	173	170	167	163	161	158
	Quintile 4	240	239	226	220	206	201	197	191	191	185
	Quintile 5	322	319	303	290	266	258	253	244	243	234