

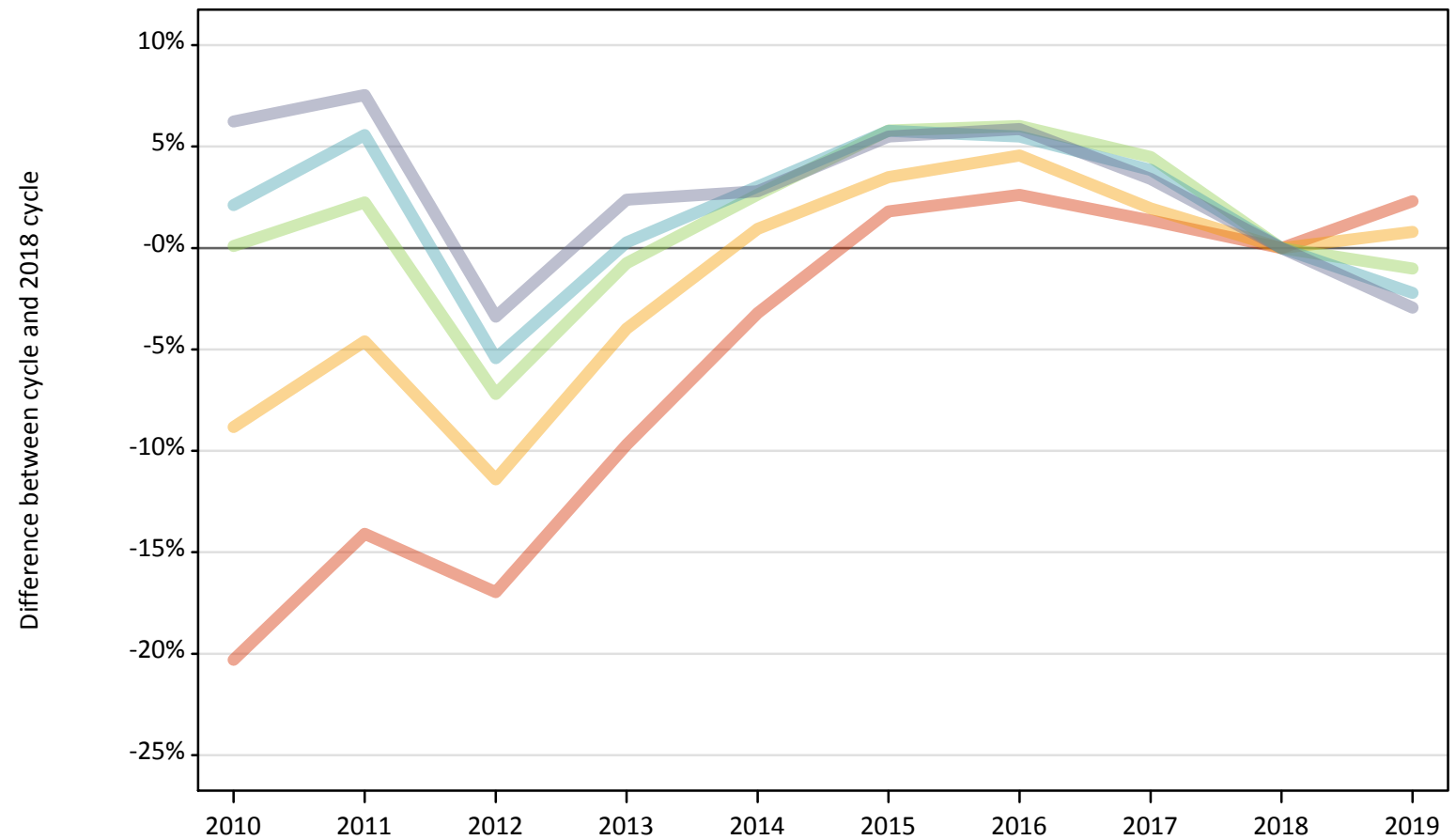
Daily Clearing Analysis: IMD2015

Analysis at 00:05 on Wednesday 28 August 2019 (13 days after A level results day)

J.1 Placed applicants from England by IMD2015 quintile: 13 days after A level results day

Placed applicants: change relative to 2018 cycle totals

- Quintile 1
- Quintile 2
- Quintile 3
- Quintile 4
- Quintile 5



Note: The percentage change is not plotted in the above chart for groups with fewer than 30 placed applicants in any one cycle.

J.2 Placed applicants from England by IMD2015 quintile: 13 days after A level results day

Applicant Status IMD2015		2010	2011	2012	2013	2014	2015	2016	2017	2018	2019
Placed	Quintile 1	51,650	55,690	53,820	58,530	62,740	65,990	66,520	65,700	64,820	66,310
	Quintile 2	57,630	60,300	56,000	60,700	63,800	65,420	66,090	64,440	63,210	63,710
	Quintile 3	64,660	66,050	59,950	64,110	66,290	68,340	68,480	67,490	64,590	63,940
	Quintile 4	72,350	74,790	67,000	71,050	72,990	74,940	74,740	73,580	70,850	69,280
	Quintile 5	88,450	89,540	80,440	85,240	85,590	87,830	88,140	86,100	83,260	80,820

J.3 Placed applicants from England by IMD2015 quintile: 13 days after A level results day

Placed applicants: change relative to 2018 cycle totals

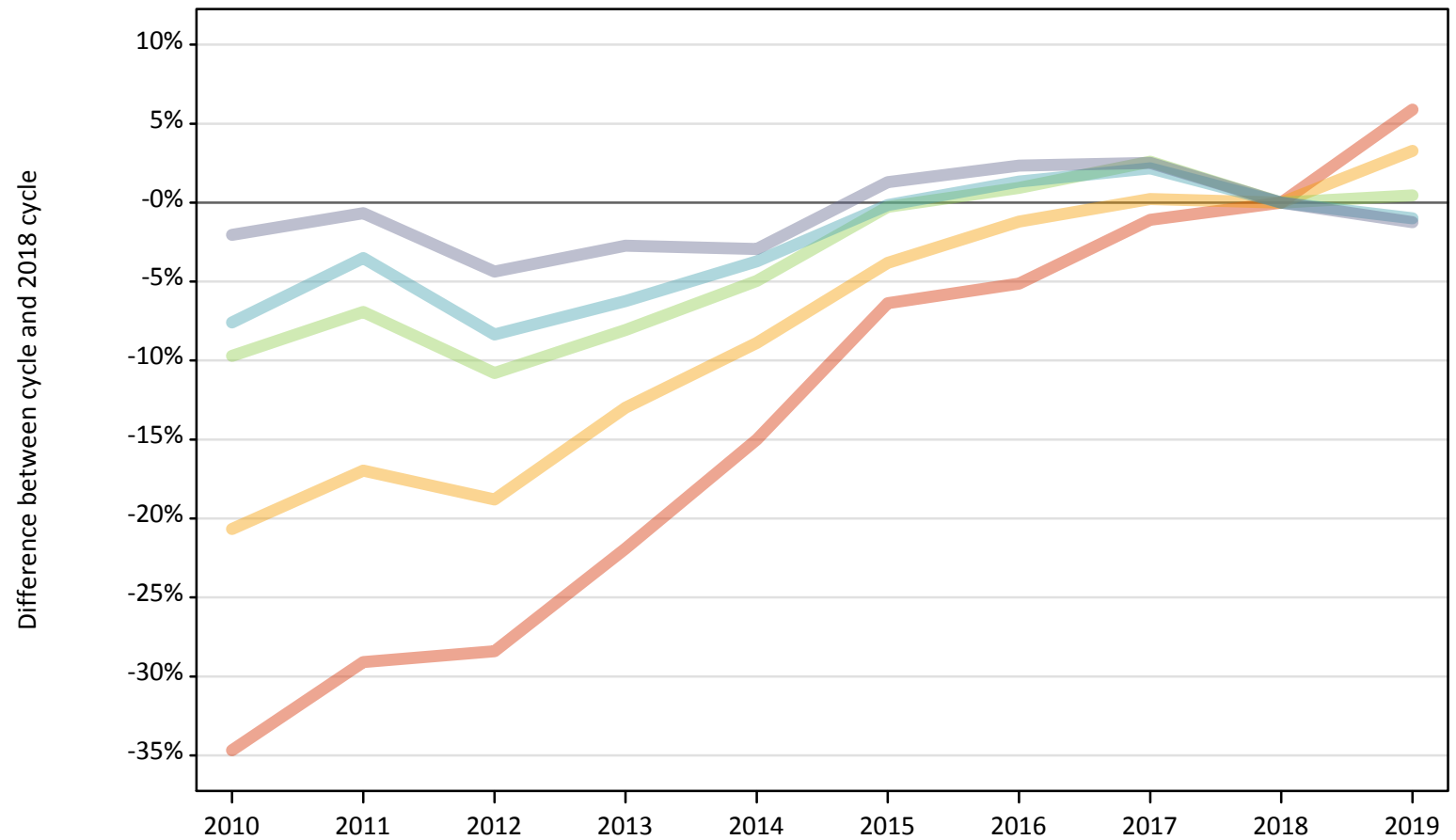
Applicant Status IMD2015		2010	2011	2012	2013	2014	2015	2016	2017	2018	2019
Placed	Quintile 1	-20%	-14%	-17%	-10%	-3%	2%	3%	1%	0%	2%
	Quintile 2	-9%	-5%	-11%	-4%	1%	4%	5%	2%	0%	1%
	Quintile 3	0%	2%	-7%	-1%	3%	6%	6%	4%	0%	-1%
	Quintile 4	2%	6%	-5%	0%	3%	6%	5%	4%	0%	-2%
	Quintile 5	6%	8%	-3%	2%	3%	5%	6%	3%	0%	-3%

Note: The percentage change is not recorded in the above table for groups with fewer than 10 placed applicants in that cycle or in the 2018 cycle.

J.4 Placed 18 year old applicants from England by IMD2015 quintile: 13 days after A level results day

Placed 18 year old applicants: change relative to 2018 cycle totals

- Quintile 1
- Quintile 2
- Quintile 3
- Quintile 4
- Quintile 5



Note: The percentage change is not plotted in the above chart for groups with fewer than 30 placed applicants in any one cycle.

J.5 Placed 18 year old applicants from England by IMD2015 quintile: 13 days after A level results day

Applicant Status IMD2015		2010	2011	2012	2013	2014	2015	2016	2017	2018	2019
Placed	Quintile 1	20,280	22,020	22,230	24,250	26,390	29,070	29,450	30,710	31,050	32,870
	Quintile 2	26,220	27,440	26,840	28,760	30,120	31,790	32,660	33,130	33,050	34,140
	Quintile 3	33,790	34,830	33,380	34,400	35,570	37,320	37,760	38,380	37,420	37,590
	Quintile 4	41,050	42,860	40,710	41,660	42,770	44,360	45,010	45,390	44,420	43,980
	Quintile 5	55,360	56,130	54,050	54,970	54,860	57,240	57,840	57,940	56,520	55,810

J.6 Placed 18 year old applicants from England by IMD2015 quintile: 13 days after A level results day

Placed 18 year old applicants: change relative to 2018 cycle totals

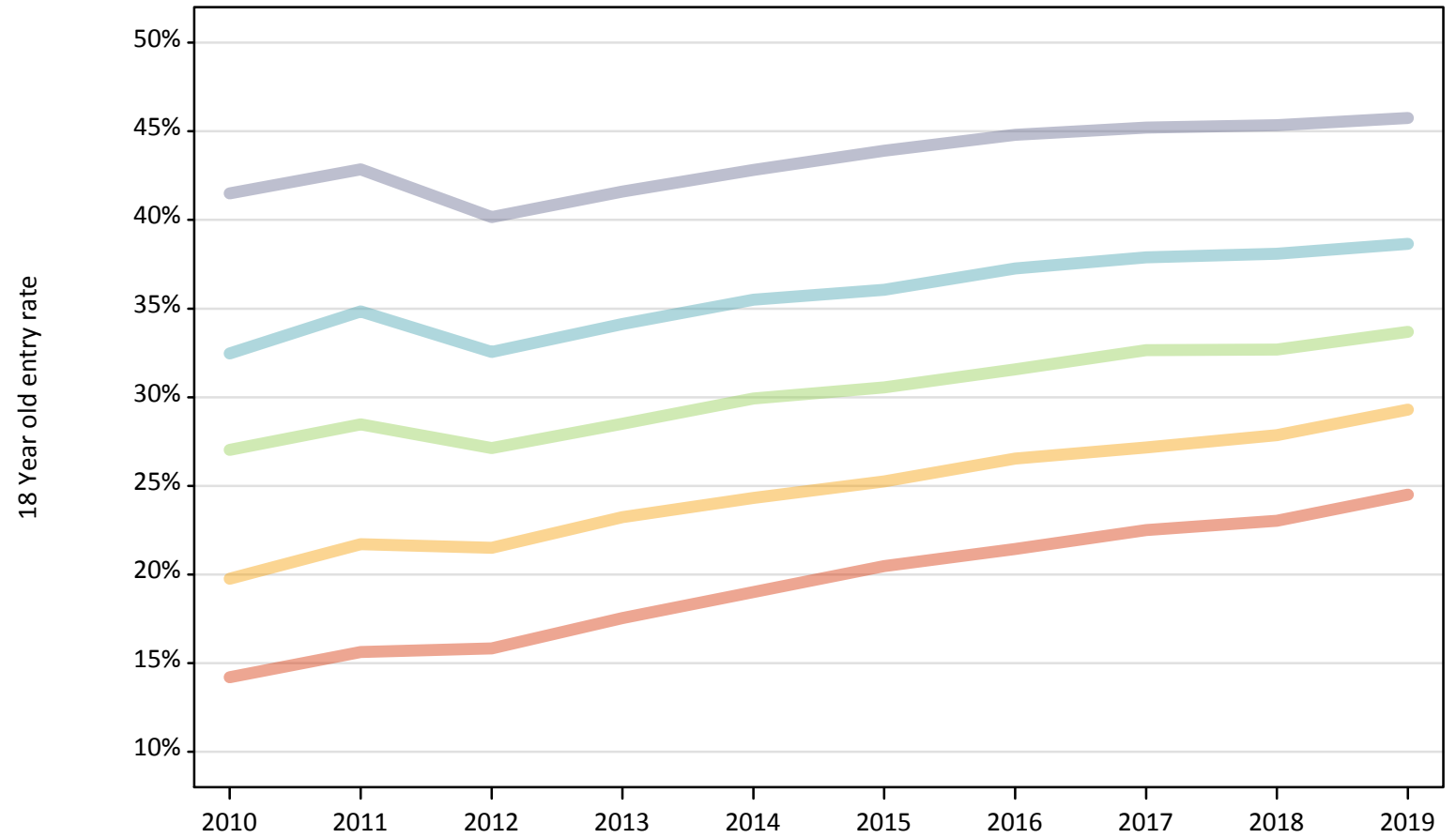
Applicant Status IMD2015		2010	2011	2012	2013	2014	2015	2016	2017	2018	2019
Placed	Quintile 1	-35%	-29%	-28%	-22%	-15%	-6%	-5%	-1%	0%	6%
	Quintile 2	-21%	-17%	-19%	-13%	-9%	-4%	-1%	0%	0%	3%
	Quintile 3	-10%	-7%	-11%	-8%	-5%	-0%	1%	3%	0%	0%
	Quintile 4	-8%	-4%	-8%	-6%	-4%	-0%	1%	2%	0%	-1%
	Quintile 5	-2%	-1%	-4%	-3%	-3%	1%	2%	3%	0%	-1%

Note: The percentage change is not recorded in the above table for groups with fewer than 10 placed applicants in that cycle or in the 2018 cycle.

J.7 Placed 18 year old applicants from England by IMD2015 quintile: 13 days after A level results day

Placed 18 year old applicants: entry rate

- Quintile 1
- Quintile 2
- Quintile 3
- Quintile 4
- Quintile 5



J.8 Placed 18 year old applicants from England by IMD2015 quintile: 13 days after A level results day

Placed 18 year old applicants: entry rate

Applicant Status	IMD2015	2010	2011	2012	2013	2014	2015	2016	2017	2018	2019
Placed	Quintile 1	14.2%	15.6%	15.8%	17.5%	19.0%	20.5%	21.4%	22.5%	23.0%	24.5%
	Quintile 2	19.8%	21.7%	21.5%	23.2%	24.3%	25.3%	26.5%	27.2%	27.9%	29.3%
	Quintile 3	27.0%	28.5%	27.1%	28.5%	29.9%	30.6%	31.6%	32.7%	32.7%	33.7%
	Quintile 4	32.5%	34.8%	32.6%	34.1%	35.5%	36.1%	37.3%	37.9%	38.1%	38.6%
	Quintile 5	41.5%	42.9%	40.2%	41.6%	42.8%	43.9%	44.8%	45.2%	45.3%	45.8%

J.9 Placed 18 year old applicants from England by IMD2015 quintile: 13 days after A level results day

Placed 18 year old applicants: entry rate (indexed to 100 = Quintile 1)

Applicant Status	IMD2015	2010	2011	2012	2013	2014	2015	2016	2017	2018	2019
Placed	Quintile 1	100	100	100	100	100	100	100	100	100	100
	Quintile 2	139	139	136	133	128	123	124	121	121	120
	Quintile 3	190	182	171	163	157	149	147	145	142	137
	Quintile 4	229	223	206	195	187	176	174	168	165	158
	Quintile 5	292	274	254	237	225	214	209	201	197	187