

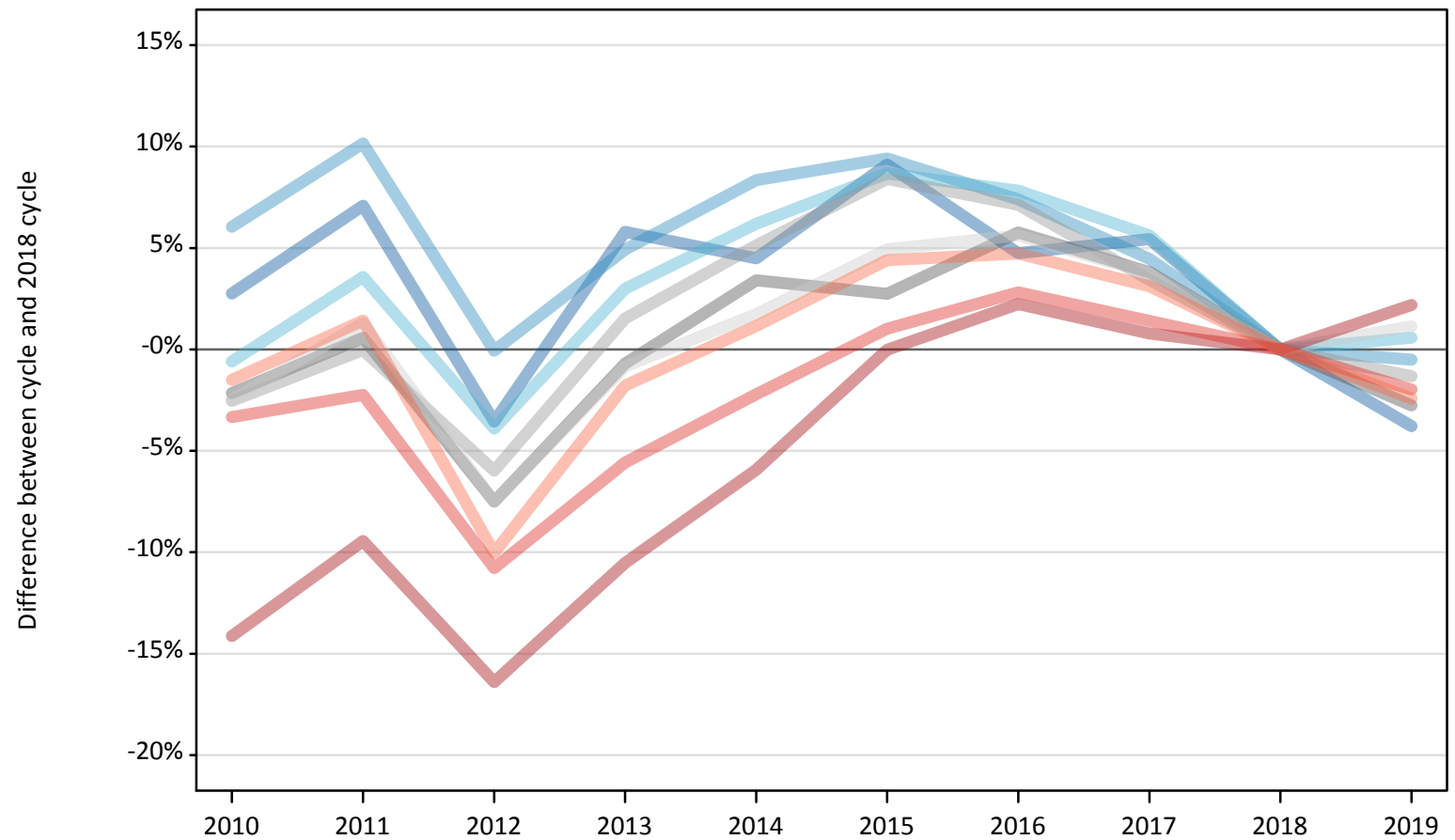
Daily Clearing Analysis: Region

Analysis at 00:05 on Wednesday 28 August 2019 (13 days after A level results day)

R.1 Placed applicants by region of domicile: 13 days after A level results day

Placed applicants: change relative to 2018 cycle totals

- North East
- North West
- Yorkshire and The Humber
- East Midlands
- West Midlands
- East of England
- London
- South East
- South West



Note: The percentage change is not plotted in the above chart for groups with fewer than 30 placed applicants in any one cycle.

R.2 Placed applicants by region of domicile: 13 days after A level results day

Applicant Status	Domicile	2010	2011	2012	2013	2014	2015	2016	2017	2018	2019
Placed	North East	14,910	15,540	14,000	15,350	15,170	15,840	15,200	15,300	14,510	13,970
	North West	46,780	48,580	44,080	46,280	47,790	48,260	47,370	46,070	44,110	43,880
	Yorkshire and The Humber	30,600	31,880	29,580	31,710	32,690	33,450	33,190	32,510	30,780	30,960
	East Midlands	26,190	26,930	24,760	26,580	27,680	27,500	28,310	27,790	26,770	26,030
	West Midlands	34,940	35,830	33,700	36,390	37,690	38,860	38,400	37,070	35,840	35,370
	East of England	34,900	36,250	33,100	35,480	36,410	37,550	37,800	37,120	35,780	36,190
	London	59,770	63,040	58,190	62,280	65,480	69,600	71,170	70,150	69,610	71,140
	South East	56,070	56,700	51,750	54,770	56,730	58,600	59,640	58,820	58,000	56,860
	South West	31,610	32,540	28,870	31,510	32,460	33,500	33,600	33,090	32,090	31,310
	(England total)	335,760	347,290	318,030	340,360	352,080	363,150	364,680	357,940	347,500	345,720
	Scotland	28,490	28,000	28,030	28,550	29,190	32,060	33,400	34,090	34,550	33,390
	Northern Ireland	13,400	13,550	12,730	14,110	14,120	13,840	14,620	14,170	13,720	13,410
	Wales	17,280	17,120	17,720	17,880	18,660	19,120	19,250	18,770	18,350	18,000
	UK	394,930	405,970	376,510	400,900	414,050	428,160	431,950	424,970	414,120	410,520

R.3 Placed applicants by region of domicile: 13 days after A level results day

Placed applicants: change relative to 2018 cycle totals

Applicant Status	Domicile	2010	2011	2012	2013	2014	2015	2016	2017	2018	2019
Placed	North East	3%	7%	-4%	6%	4%	9%	5%	5%	0%	-4%
	North West	6%	10%	-0%	5%	8%	9%	7%	4%	0%	-1%
	Yorkshire and The Humber	-1%	4%	-4%	3%	6%	9%	8%	6%	0%	1%
	East Midlands	-2%	1%	-8%	-1%	3%	3%	6%	4%	0%	-3%
	West Midlands	-3%	-0%	-6%	2%	5%	8%	7%	3%	0%	-1%
	East of England	-2%	1%	-7%	-1%	2%	5%	6%	4%	0%	1%
	London	-14%	-9%	-16%	-11%	-6%	-0%	2%	1%	0%	2%
	South East	-3%	-2%	-11%	-6%	-2%	1%	3%	1%	0%	-2%
	South West	-1%	1%	-10%	-2%	1%	4%	5%	3%	0%	-2%
	(England total)	-3%	-0%	-8%	-2%	1%	5%	5%	3%	0%	-1%
	Scotland	-18%	-19%	-19%	-17%	-16%	-7%	-3%	-1%	0%	-3%
	Northern Ireland	-2%	-1%	-7%	3%	3%	1%	7%	3%	0%	-2%
	Wales	-6%	-7%	-3%	-3%	2%	4%	5%	2%	0%	-2%
	UK	-5%	-2%	-9%	-3%	-0%	3%	4%	3%	0%	-1%

Note: The percentage change is not recorded in the above table for groups with fewer than 10 placed applicants in that cycle or in the 2018 cycle.

R.4 Placed applicants by region of domicile: 13 days after A level results day

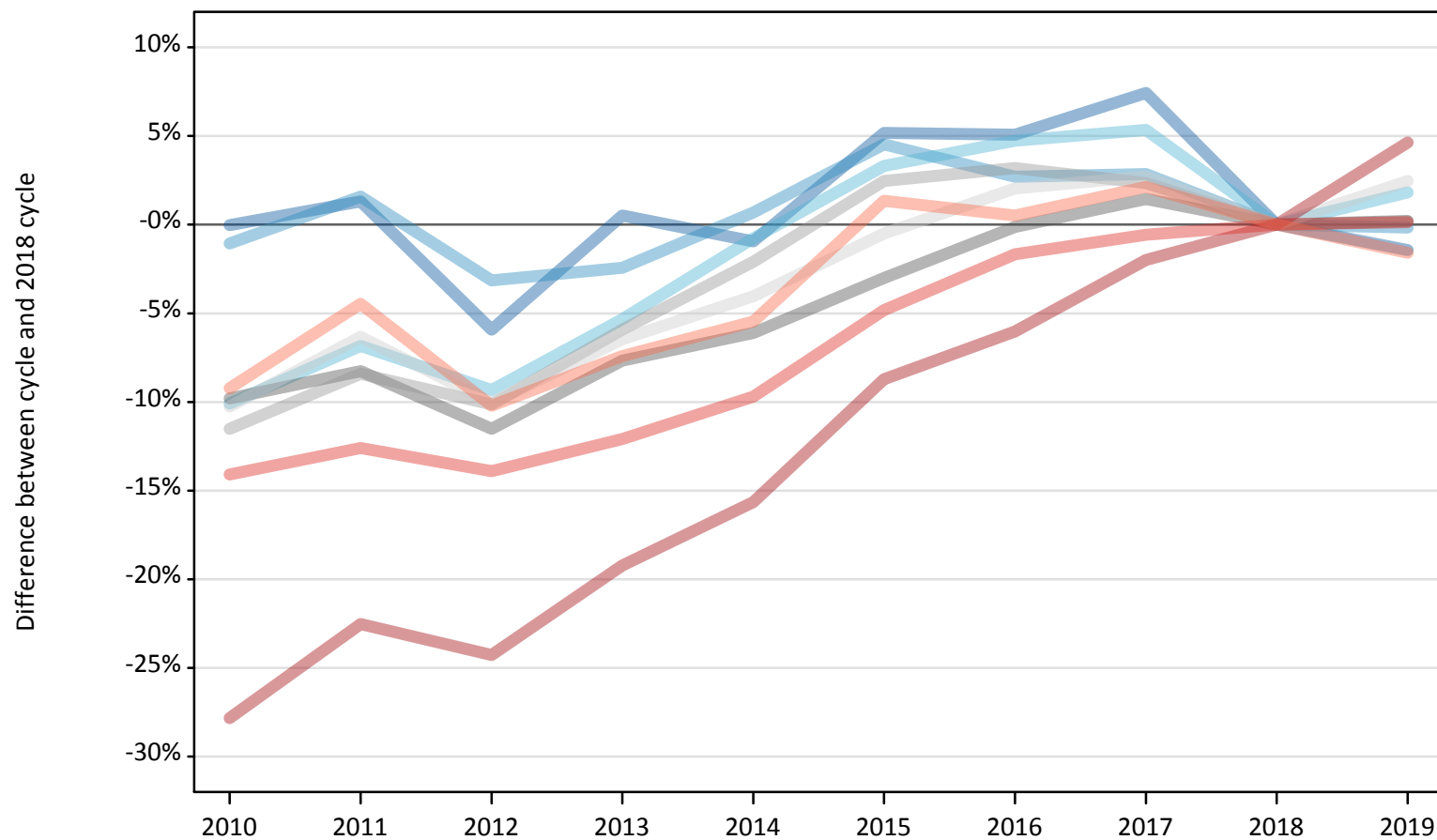
Placed applicants: absolute change relative to 2018 cycle totals

Applicant Status	Domicile	2010	2011	2012	2013	2014	2015	2016	2017	2018	2019
Placed	North East	400	1,030	-520	840	650	1,320	690	790	0	-550
	North West	2,670	4,480	-30	2,170	3,680	4,150	3,260	1,970	0	-230
	Yorkshire and The Humber	-180	1,100	-1,200	920	1,910	2,670	2,410	1,730	0	180
	East Midlands	-580	160	-2,010	-190	910	730	1,540	1,020	0	-740
	West Midlands	-910	-10	-2,140	550	1,840	3,010	2,560	1,230	0	-470
	East of England	-890	470	-2,680	-300	620	1,770	2,010	1,340	0	410
	London	-9,840	-6,570	-11,420	-7,330	-4,130	-10	1,560	550	0	1,530
	South East	-1,930	-1,300	-6,250	-3,230	-1,280	590	1,640	820	0	-1,140
	South West	-480	460	-3,210	-570	370	1,410	1,520	1,000	0	-780
	(England total)	-11,730	-200	-29,460	-7,130	4,580	15,650	17,190	10,440	0	-1,780
	Scotland	-6,070	-6,550	-6,520	-6,010	-5,360	-2,490	-1,150	-460	0	-1,160
	Northern Ireland	-320	-170	-1,000	380	400	110	900	440	0	-310
	Wales	-1,070	-1,220	-630	-470	310	770	900	430	0	-340
	UK	-19,190	-8,150	-37,610	-13,220	-70	14,040	17,830	10,850	0	-3,600

R.5 Placed 18 year old applicants by region of domicile: 13 days after A level results day

Placed 18 year old applicants: change relative to 2018 cycle totals

- North East
- North West
- Yorkshire and The Humber
- East Midlands
- West Midlands
- East of England
- London
- South East
- South West



Note: The percentage change is not plotted in the above chart for groups with fewer than 30 placed applicants in any one cycle.

R.6 Placed 18 year old applicants by region of domicile: 13 days after A level results day

Applicant Status	Domicile	2010	2011	2012	2013	2014	2015	2016	2017	2018	2019
Placed	North East	8,030	8,140	7,560	8,070	7,960	8,450	8,440	8,630	8,030	7,920
	North West	25,740	26,430	25,200	25,390	26,200	27,190	26,720	26,760	26,020	25,970
	Yorkshire and The Humber	16,370	16,960	16,510	17,240	18,060	18,810	19,070	19,180	18,200	18,540
	East Midlands	14,470	14,720	14,200	14,810	15,060	15,560	16,020	16,270	16,040	16,080
	West Midlands	18,310	18,950	18,590	19,460	20,250	21,200	21,350	21,170	20,690	20,720
	East of England	20,030	20,910	20,080	20,880	21,420	22,210	22,780	22,930	22,320	22,870
	London	27,940	29,990	29,320	31,270	32,650	35,340	36,380	37,940	38,710	40,510
	South East	30,560	31,080	30,620	31,270	32,120	33,850	34,970	35,360	35,570	35,620
	South West	15,610	16,430	15,440	15,930	16,260	17,430	17,290	17,570	17,200	16,930
	(England total)	177,050	183,600	177,510	184,310	189,980	200,030	203,020	205,810	202,780	205,150
	Scotland	14,690	13,990	14,060	14,140	14,310	14,400	14,640	14,640	14,610	14,050
	Northern Ireland	8,820	8,590	8,200	8,710	8,510	8,420	8,570	8,500	8,120	7,930
	Wales	9,760	9,410	9,700	9,630	10,030	10,500	10,600	10,250	10,100	9,870
	UK	210,330	215,590	209,470	216,800	222,830	233,350	236,820	239,200	235,620	236,990

R.7 Placed 18 year old applicants by region of domicile: 13 days after A level results day

Placed 18 year old applicants: change relative to 2018 cycle totals

Applicant Status	Domicile	2010	2011	2012	2013	2014	2015	2016	2017	2018	2019
Placed	North East	-0%	1%	-6%	1%	-1%	5%	5%	7%	0%	-1%
	North West	-1%	2%	-3%	-2%	1%	5%	3%	3%	0%	-0%
	Yorkshire and The Humber	-10%	-7%	-9%	-5%	-1%	3%	5%	5%	0%	2%
	East Midlands	-10%	-8%	-12%	-8%	-6%	-3%	-0%	1%	0%	0%
	West Midlands	-12%	-8%	-10%	-6%	-2%	2%	3%	2%	0%	0%
	East of England	-10%	-6%	-10%	-6%	-4%	-1%	2%	3%	0%	2%
	London	-28%	-23%	-24%	-19%	-16%	-9%	-6%	-2%	0%	5%
	South East	-14%	-13%	-14%	-12%	-10%	-5%	-2%	-1%	0%	0%
	South West	-9%	-4%	-10%	-7%	-5%	1%	1%	2%	0%	-2%
	(England total)	-13%	-9%	-12%	-9%	-6%	-1%	0%	1%	0%	1%
	Scotland	1%	-4%	-4%	-3%	-2%	-1%	0%	0%	0%	-4%
	Northern Ireland	9%	6%	1%	7%	5%	4%	6%	5%	0%	-2%
	Wales	-3%	-7%	-4%	-5%	-1%	4%	5%	2%	0%	-2%
	UK	-11%	-9%	-11%	-8%	-5%	-1%	1%	2%	0%	1%

Note: The percentage change is not recorded in the above table for groups with fewer than 10 placed applicants in that cycle or in the 2018 cycle.

R.8 Placed 18 year old applicants by region of domicile: 13 days after A level results day

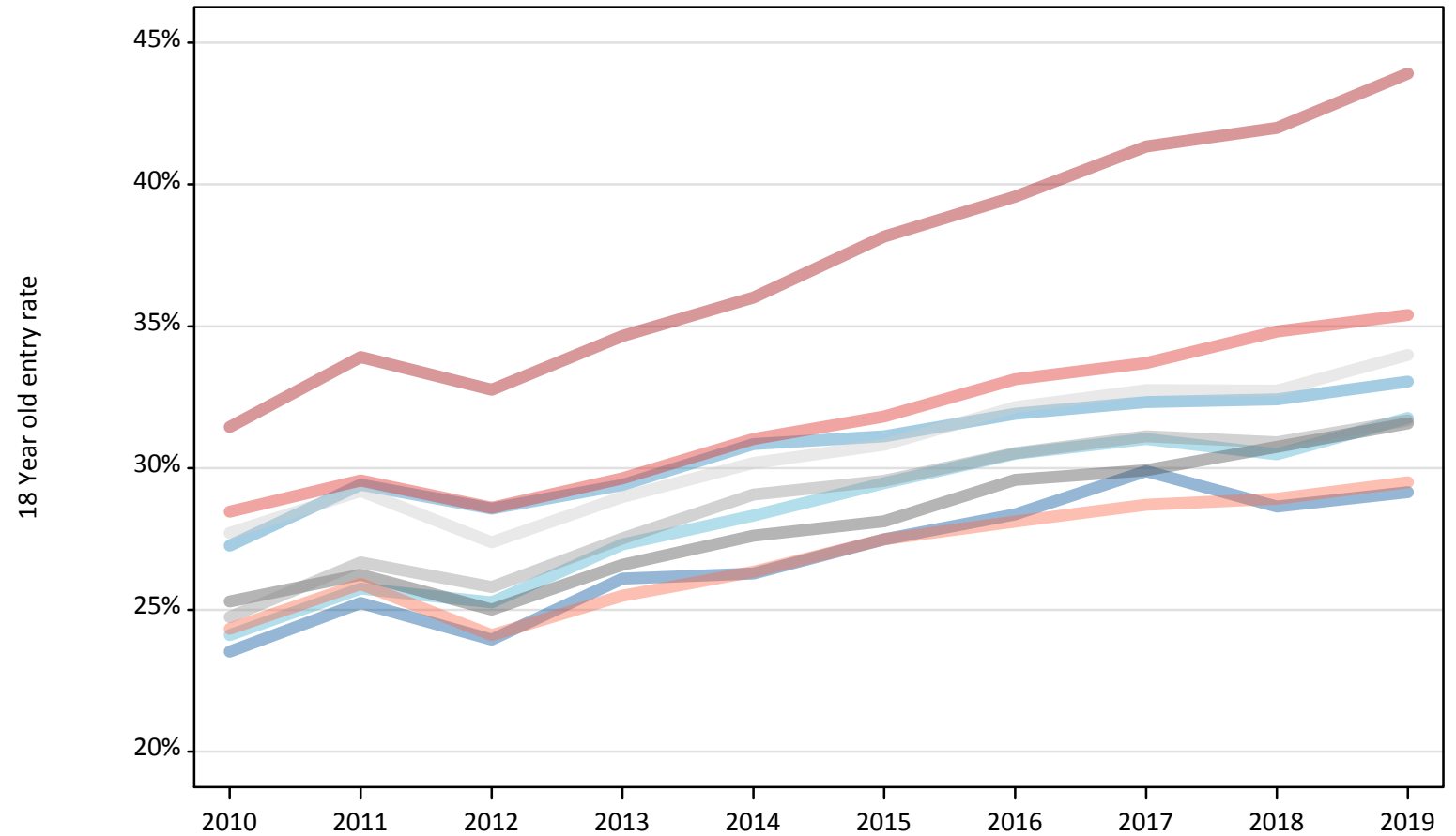
Placed 18 year old applicants: absolute change relative to 2018 cycle totals

Applicant Status	Domicile	2010	2011	2012	2013	2014	2015	2016	2017	2018	2019
Placed	North East	0	110	-480	40	-80	420	410	600	0	-120
	North West	-280	410	-820	-630	180	1,180	700	740	0	-40
	Yorkshire and The Humber	-1,840	-1,250	-1,700	-970	-140	600	860	970	0	330
	East Midlands	-1,570	-1,330	-1,850	-1,230	-980	-480	-20	230	0	30
	West Midlands	-2,380	-1,740	-2,100	-1,230	-430	510	660	490	0	40
	East of England	-2,290	-1,410	-2,250	-1,440	-900	-110	460	610	0	550
	London	-10,780	-8,720	-9,390	-7,440	-6,060	-3,370	-2,330	-770	0	1,800
	South East	-5,010	-4,480	-4,940	-4,300	-3,450	-1,720	-600	-200	0	50
	South West	-1,590	-770	-1,760	-1,270	-940	230	90	370	0	-270
	(England total)	-25,740	-19,180	-25,270	-18,470	-12,800	-2,750	230	3,030	0	2,370
	Scotland	80	-630	-550	-470	-310	-210	20	30	0	-570
	Northern Ireland	700	470	80	590	390	300	450	370	0	-200
	Wales	-330	-690	-400	-470	-70	400	500	160	0	-230
	UK	-25,290	-20,030	-26,140	-18,820	-12,790	-2,270	1,200	3,590	0	1,370

R.9 Placed 18 year old applicants by region of domicile: 13 days after A level results day

Placed 18 year old applicants: entry rate

- North East
- North West
- Yorkshire and The Humber
- East Midlands
- West Midlands
- East of England
- London
- South East
- South West



R.10 Placed 18 year old applicants by region of domicile: 13 days after A level results day

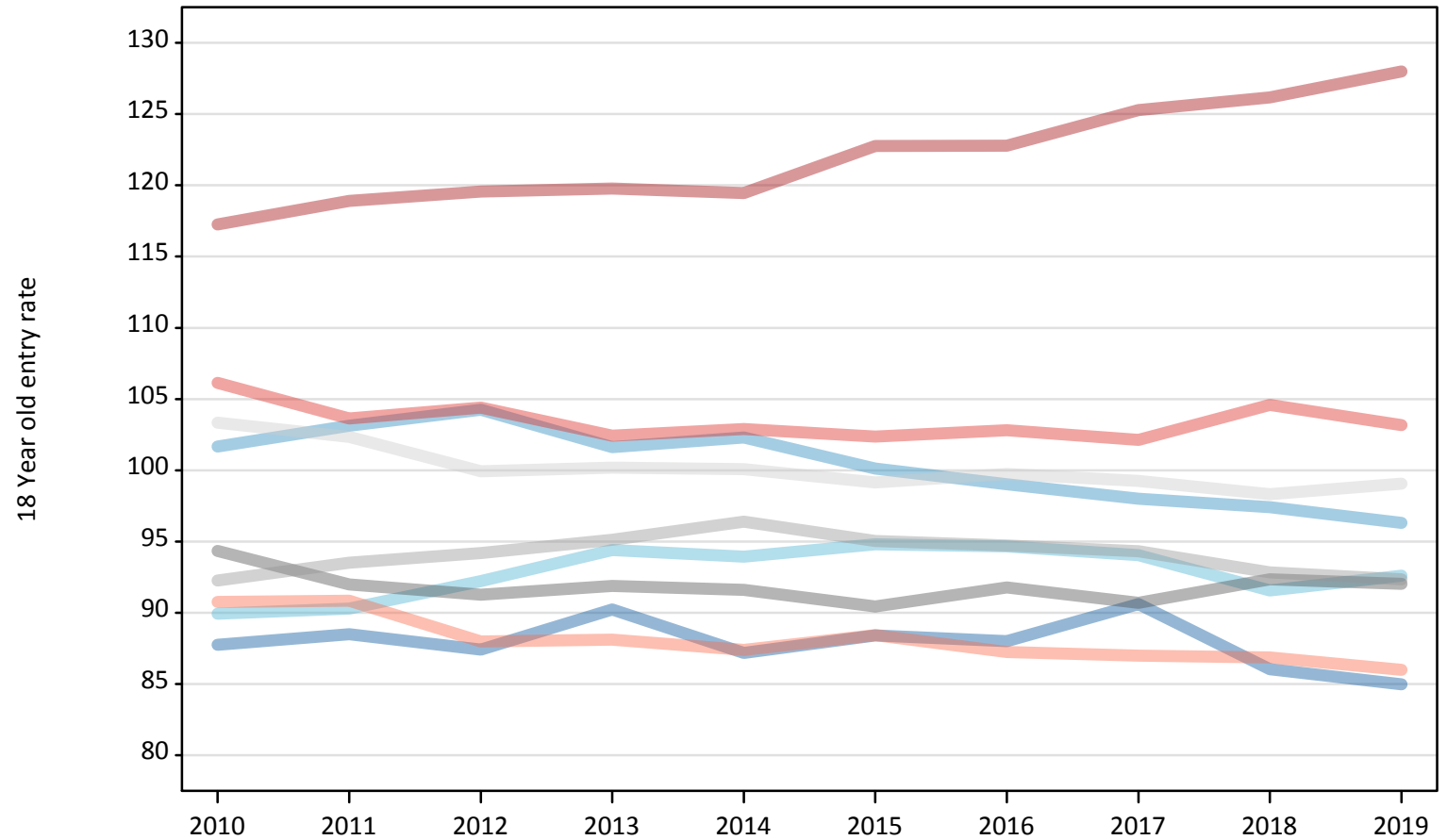
Placed 18 year old applicants: entry rate

Applicant Status	Domicile	2010	2011	2012	2013	2014	2015	2016	2017	2018	2019
Placed	North East	23.5%	25.2%	23.9%	26.1%	26.3%	27.5%	28.4%	29.9%	28.6%	29.1%
	North West	27.3%	29.4%	28.6%	29.4%	30.8%	31.1%	31.9%	32.3%	32.4%	33.0%
	Yorkshire and The Humber	24.1%	25.8%	25.3%	27.3%	28.3%	29.5%	30.5%	31.0%	30.5%	31.8%
	East Midlands	25.3%	26.2%	25.0%	26.6%	27.6%	28.1%	29.6%	29.9%	30.7%	31.6%
	West Midlands	24.7%	26.7%	25.8%	27.5%	29.1%	29.5%	30.5%	31.1%	30.9%	31.7%
	East of England	27.7%	29.2%	27.4%	29.0%	30.2%	30.8%	32.1%	32.7%	32.7%	34.0%
	London	31.4%	33.9%	32.8%	34.7%	36.0%	38.2%	39.6%	41.3%	42.0%	43.9%
	South East	28.5%	29.6%	28.6%	29.6%	31.0%	31.8%	33.1%	33.7%	34.8%	35.4%
	South West	24.3%	25.9%	24.1%	25.5%	26.3%	27.5%	28.1%	28.7%	28.9%	29.5%
	(England total)	26.8%	28.5%	27.4%	28.9%	30.1%	31.1%	32.2%	33.0%	33.3%	34.3%
	Scotland	23.0%	22.3%	22.7%	23.0%	23.3%	23.9%	24.9%	25.5%	26.3%	26.1%
	Northern Ireland	34.6%	34.4%	32.6%	35.6%	35.1%	33.9%	35.0%	35.1%	35.0%	35.4%
	Wales	24.5%	24.4%	25.2%	25.5%	26.7%	27.9%	29.2%	28.9%	29.4%	29.4%
	UK	26.6%	28.0%	27.1%	28.5%	29.6%	30.5%	31.6%	32.3%	32.6%	33.5%

R.11 Placed 18 year old applicants by region of domicile: 13 days after A level results day

Placed 18 year old applicants: entry rates (indexed to 100 = England)

- North East
- North West
- Yorkshire and The Humber
- East Midlands
- West Midlands
- East of England
- London
- South East
- South West



R.12 Placed 18 year old applicants by region of domicile: 13 days after A level results day

Placed 18 year old applicants: entry rate (indexed to 100 = England)

Applicant Status	Domicile	2010	2011	2012	2013	2014	2015	2016	2017	2018	2019
Placed	North East	88	88	87	90	87	88	88	91	86	85
	North West	102	103	104	102	102	100	99	98	97	96
	Yorkshire and The Humber	90	90	92	94	94	95	95	94	92	93
	East Midlands	94	92	91	92	92	90	92	91	92	92
	West Midlands	92	94	94	95	96	95	95	94	93	92
	East of England	103	102	100	100	100	99	100	99	98	99
	London	117	119	120	120	119	123	123	125	126	128
	South East	106	104	104	102	103	102	103	102	105	103
	South West	91	91	88	88	87	88	87	87	87	86
	(England total)	100	100	100	100	100	100	100	100	100	100