

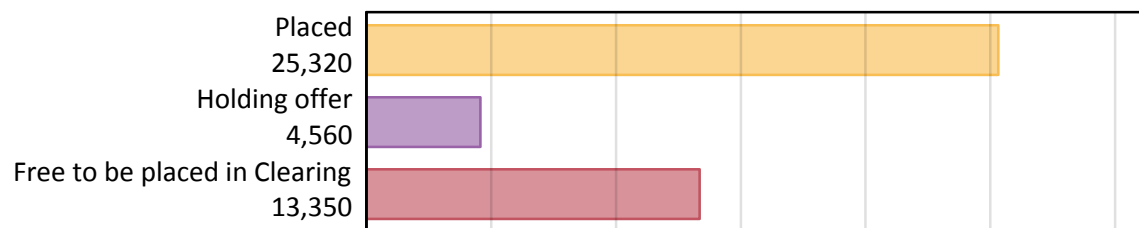
Daily Clearing Analysis: Overview

B7 Nursing analysis at 00:05 on Wednesday 28 August 2019 (13 days after A level results day)

AB.1 Placed applicants to nursing from the UK, 2019 cycle

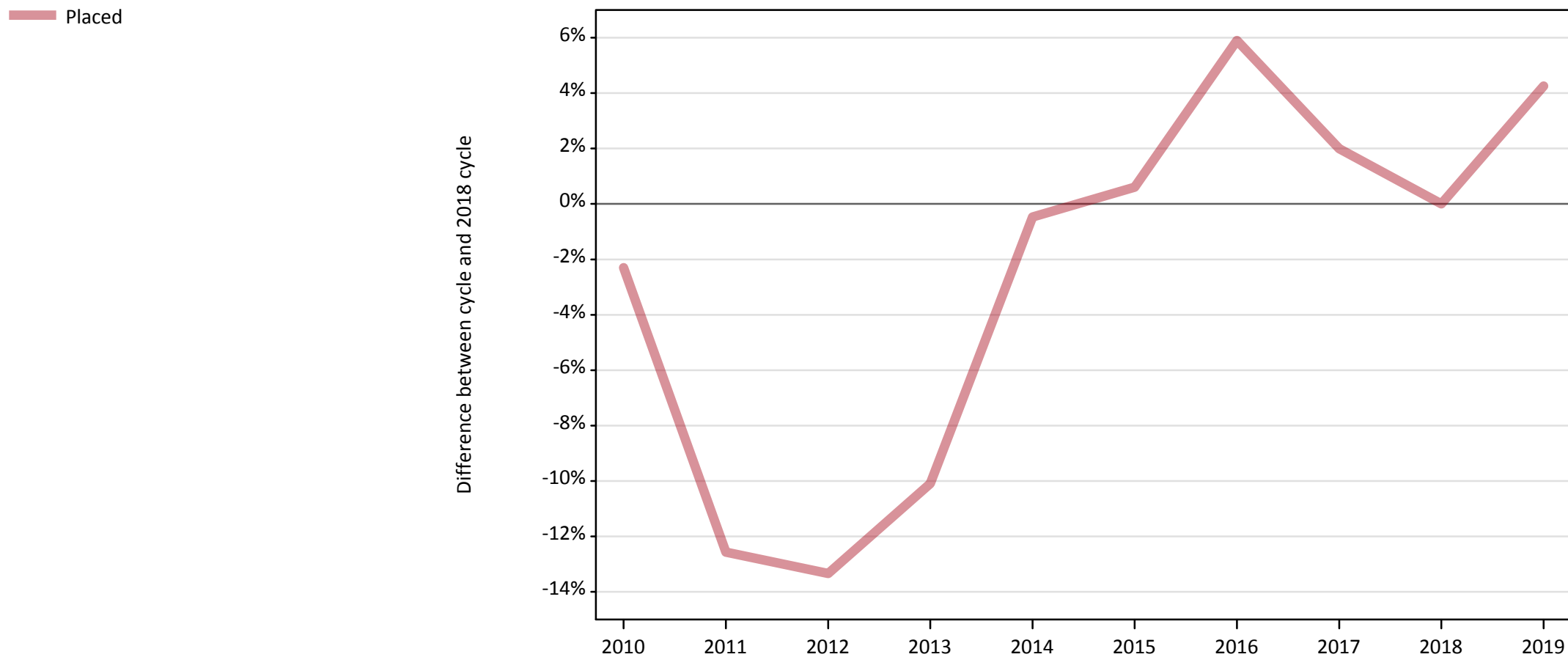
Applicant type	Status	2019
Main scheme	Placed (Clearing)	1,390
	Placed (Adjustment)	10
	Placed (Firm)	21,810
	Placed (Insurance)	530
	Placed (Other)	1,150
	Holding offer	4,560
	Free to be placed in Clearing	13,350
Direct to Clearing	Placed (Direct to Clearing)	440
	Other (Direct to Clearing)	460
All applicants	Placed	25,320

AB.2 Summary of nursing applicants who are placed, holding offers or free to be placed in Clearing (the UK)



AB.3 Placed applicants to nursing from the UK: 13 days after A level results day

Placed applicants to nursing: difference between cycle and 2018 cycle



Note: The percentage change is not plotted in the above chart for groups with fewer than 30 placed applicants in any one cycle.

AB.4 Placed applicants to nursing from the UK: 13 days after A level results day

Placed applicants to nursing: applicants at 13 days after A level results day

Applicant type	Status	2010	2011	2012	2013	2014	2015	2016	2017	2018	2019
All applicants	Placed	23,730	21,240	21,050	21,840	24,180	24,440	25,720	24,770	24,290	25,320

AB.5 Placed applicants to nursing from the UK: 13 days after A level results day

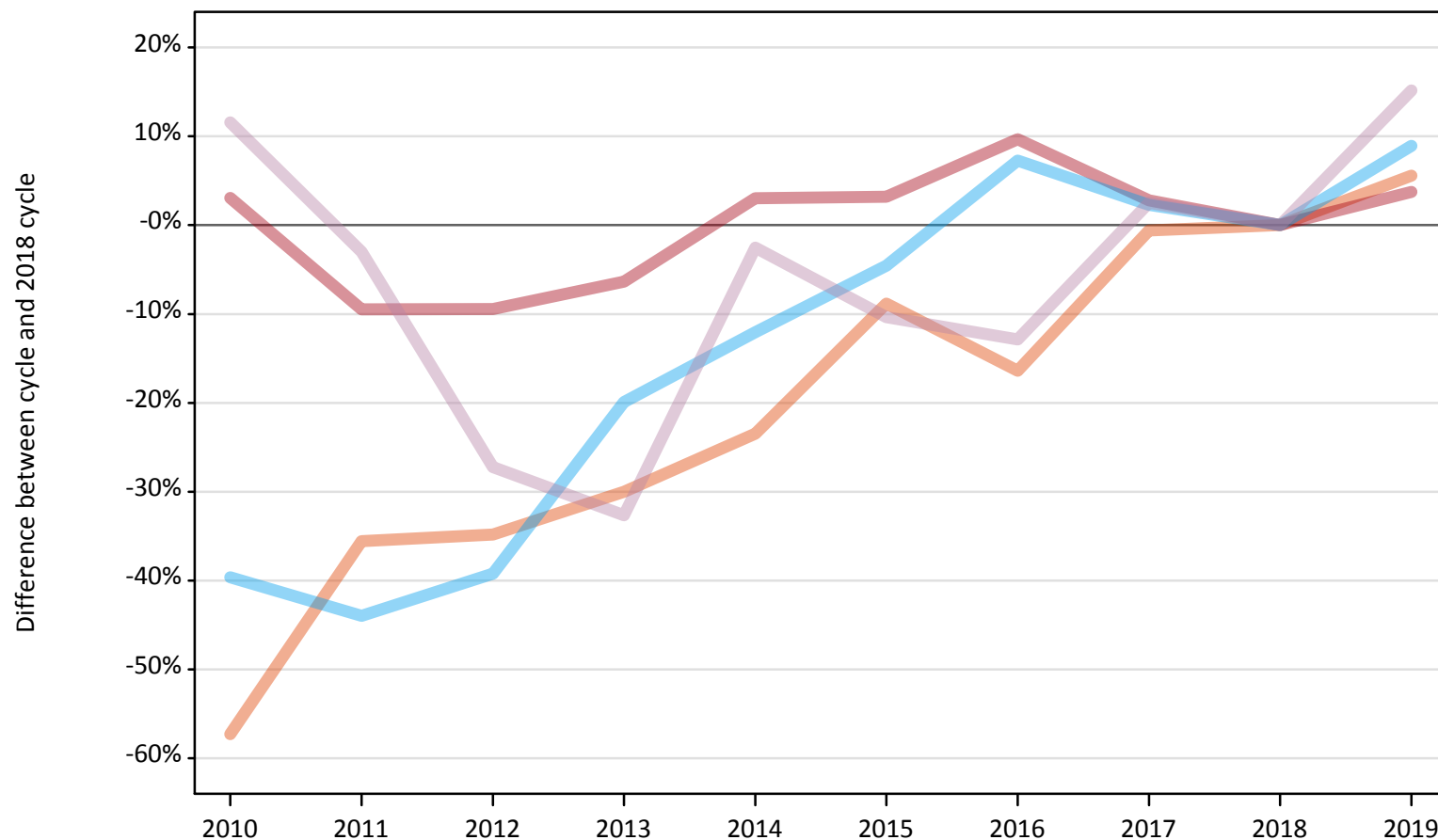
Placed applicants to nursing: difference between cycle and 2018 cycle

Applicant type	Status	2010	2011	2012	2013	2014	2015	2016	2017	2018	2019
All applicants	Placed	-2%	-13%	-13%	-10%	-0%	1%	6%	2%	0%	4%

Note: The percentage change is not recorded in the above table for groups with fewer than 10 placed applicants in that cycle or in the 2018 cycle.

AB.6 Placed main scheme applicants to nursing from the UK: 13 days after A level results day
All Main scheme placed routes (excluding Adjustment): difference between cycle and 2018 cycle

- Placed (Clearing)
- Placed (Firm)
- Placed (Insurance)
- Placed (Other)



Note: The percentage change is not plotted in the above chart for groups with fewer than 30 placed applicants in any one cycle.

AB.7 Placed main scheme applicants to nursing from the UK: 13 days after A level results day

All Main scheme placed routes (excluding Adjustment): applicants at 13 days after A level results day

Applicant type	Status	2010	2011	2012	2013	2014	2015	2016	2017	2018	2019
Main scheme	Placed (Clearing)	560	850	860	920	1,010	1,200	1,100	1,310	1,310	1,390
	Placed (Firm)	21,670	19,030	19,040	19,690	21,660	21,700	23,060	21,610	21,030	21,810
	Placed (Insurance)	290	270	290	390	420	460	520	490	480	530
	Placed (Other)	1,110	970	720	670	970	890	870	1,020	1,000	1,150

AB.8 Placed main scheme applicants to nursing from the UK: 13 days after A level results day

All Main scheme placed routes (excluding Adjustment): difference between cycle and 2018 cycle

Applicant type	Status	2010	2011	2012	2013	2014	2015	2016	2017	2018	2019
Main scheme	Placed (Clearing)	-57%	-36%	-35%	-30%	-23%	-9%	-16%	-1%	0%	6%
	Placed (Firm)	3%	-9%	-9%	-6%	3%	3%	10%	3%	0%	4%
	Placed (Insurance)	-40%	-44%	-39%	-20%	-12%	-5%	7%	2%	0%	9%
	Placed (Other)	12%	-3%	-27%	-33%	-3%	-10%	-13%	3%	0%	15%

Note: The percentage change is not recorded in the above table for groups with fewer than 10 placed applicants in that cycle or in the 2018 cycle.

AB.9 Main scheme applicants placed to nursing through adjustment: 13 days after A level results day

Placed through adjustment: difference between cycle and 2018 cycle

[This chart is not part of this report]

AB.10 Main scheme applicants placed to nursing through adjustment: 13 days after A level results day

Placed through adjustment: applicants at 13 days after A level results day

Applicant type	Status	2010	2011	2012	2013	2014	2015	2016	2017	2018	2019
Main scheme	Placed (Adjustment)	0	0	0	10	10	10	0	20	10	10

AB.11 Main scheme applicants placed to nursing through adjustment: 13 days after A level results day

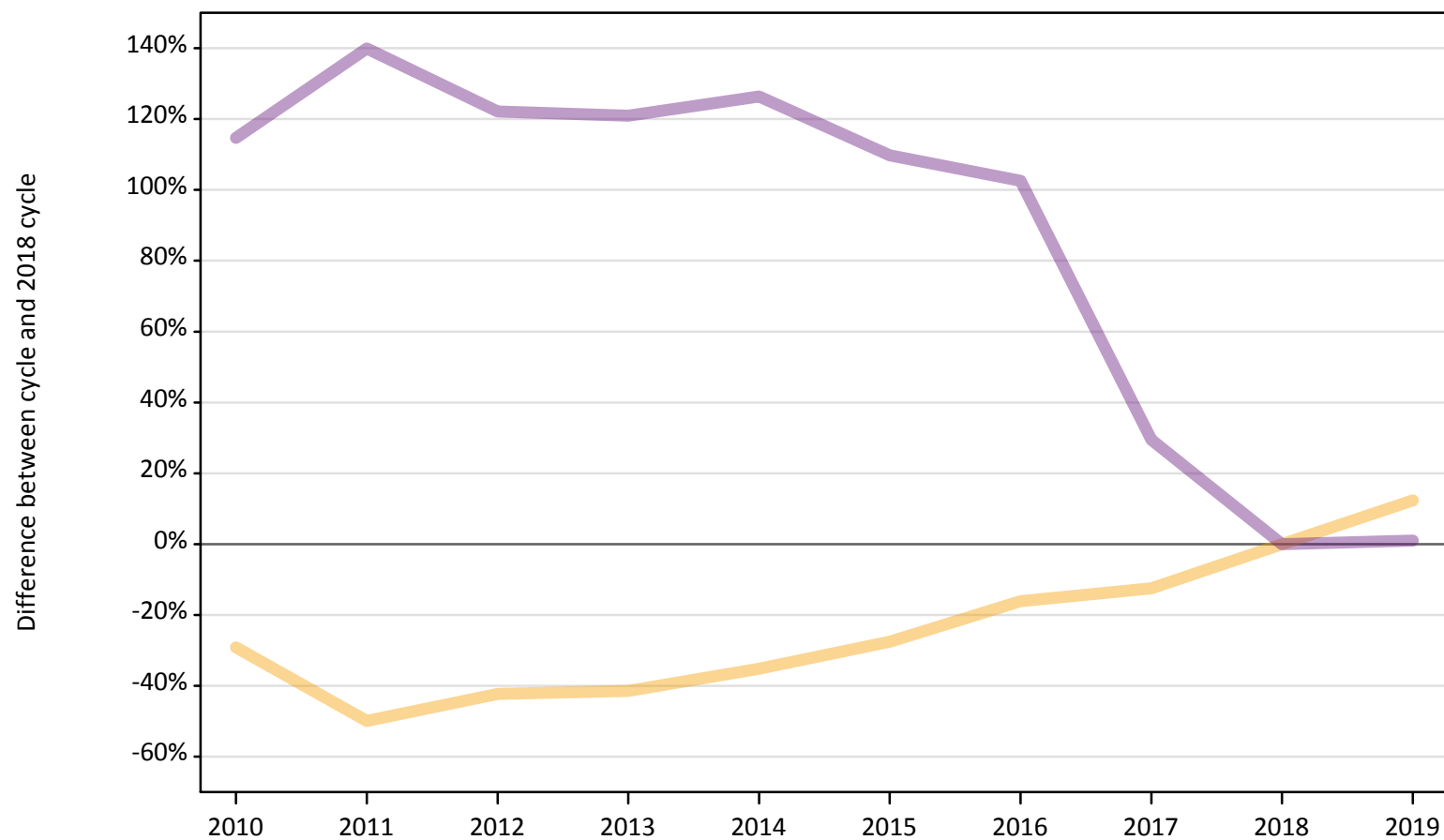
Placed through adjustment: difference between cycle and 2018 cycle

[This table is not part of this report]

AB.12 Main scheme applicants to nursing not currently placed from the UK: 13 days after A level results day

Applicants in unplaced states: difference between cycle and 2018 cycle

— Holding offer
— Free to be placed in Clearing



Note: The percentage change is not plotted in the above chart for groups with fewer than 30 unplaced applicants in any one cycle.

AB.13 Main scheme applicants to nursing not currently placed from the UK: 13 days after A level results day

Applicants in unplaced states: applicants at 13 days after A level results day

Applicant type	Status	2010	2011	2012	2013	2014	2015	2016	2017	2018	2019
Main scheme	Holding offer	2,880	2,030	2,340	2,380	2,630	2,940	3,410	3,550	4,060	4,560
	Free to be placed in Clearing	28,380	31,720	29,360	29,210	29,930	27,730	26,780	17,110	13,220	13,350

AB.14 Main scheme applicants to nursing not currently placed from the UK: 13 days after A level results day

Applicants in unplaced states: difference between cycle and 2018 cycle

Applicant type	Status	2010	2011	2012	2013	2014	2015	2016	2017	2018	2019
Main scheme	Holding offer	-29%	-50%	-42%	-41%	-35%	-28%	-16%	-13%	0%	12%
	Free to be placed in Clearing	115%	140%	122%	121%	126%	110%	103%	29%	0%	1%

Note: The percentage change is not recorded in the above table for groups with fewer than 10 unplaced applicants in that cycle or in the 2018 cycle.

AB.15 Direct to Clearing applicants from the UK: 13 days after A level results day

Direct to Clearing: difference between cycle and 2018 cycle



Note: The percentage change is not plotted in the above chart for groups with fewer than 30 placed applicants in any one cycle.

AB.16 Direct to Clearing applicants from the UK: 13 days after A level results day

Direct to Clearing 13 days after A level results day

Applicant type	Status	2010	2011	2012	2013	2014	2015	2016	2017	2018	2019
Direct to Clearing	Placed (Direct to Clearing)	100	120	130	170	110	180	180	330	470	440
	Other (Direct to Clearing)	50	110	150	170	130	220	240	340	420	460

AB.17 Direct to Clearing applicants from the UK: 13 days after A level results day

Direct to Clearing: difference between cycle and 2018 cycle

Applicant type	Status	2010	2011	2012	2013	2014	2015	2016	2017	2018	2019
Direct to Clearing	Placed (Direct to Clearing)	-79%	-74%	-71%	-63%	-77%	-61%	-62%	-30%	0%	-5%
	Other (Direct to Clearing)	-87%	-75%	-64%	-59%	-68%	-46%	-42%	-18%	0%	12%

Note: The percentage change is not recorded in the above table for groups with fewer than 10 placed applicants in that cycle or in the 2018 cycle.