

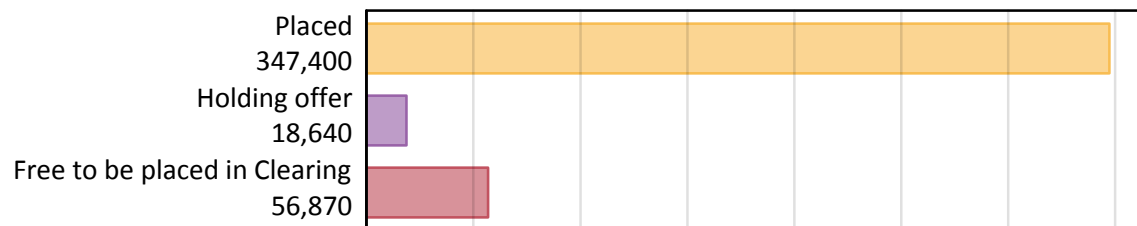
Daily Clearing Analysis: Overview

Analysis at 00:05 on Thursday 29 August 2019 (14 days after A level results day)

A.1 Applicants by type and status from England, 2019 cycle

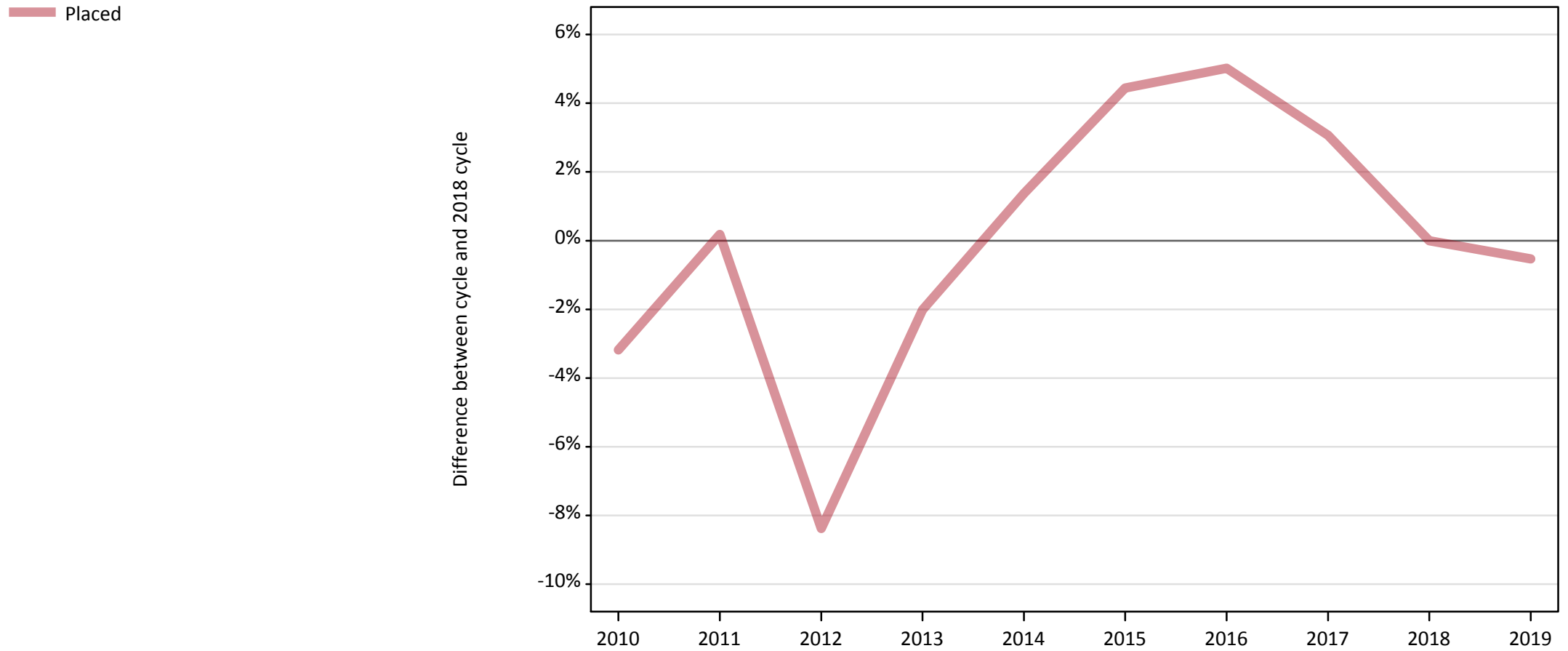
Applicant type	Status	2019
Main scheme	Placed (Clearing)	37,410
	Placed (Adjustment)	500
	Placed (Firm)	266,220
	Placed (Insurance)	24,710
	Placed (Other)	9,320
	Holding offer	18,640
	Free to be placed in Clearing	56,870
Direct to Clearing	Placed (Direct to Clearing)	9,260
	Other (Direct to Clearing)	6,520
All applicants	Placed	347,400

A.2 Summary of applicants who are placed, holding offers or free to be placed in Clearing (England)



A.3 All placed applicants from England: 14 days after A level results day

All placed applicants: difference between cycle and 2018 cycle



Note: The percentage change is not plotted in the above chart for groups with fewer than 30 placed applicants in any one cycle.

A.4 All placed applicants from England: 14 days after A level results day

All placed applicants: applicants at 14 days after A level results day

Applicant type	Status	2010	2011	2012	2013	2014	2015	2016	2017	2018	2019
All applicants	Placed	338,140	349,890	319,990	342,220	354,040	364,780	366,780	359,970	349,260	347,400

A.5 All placed applicants from England: 14 days after A level results day

All placed applicants: difference between cycle and 2018 cycle

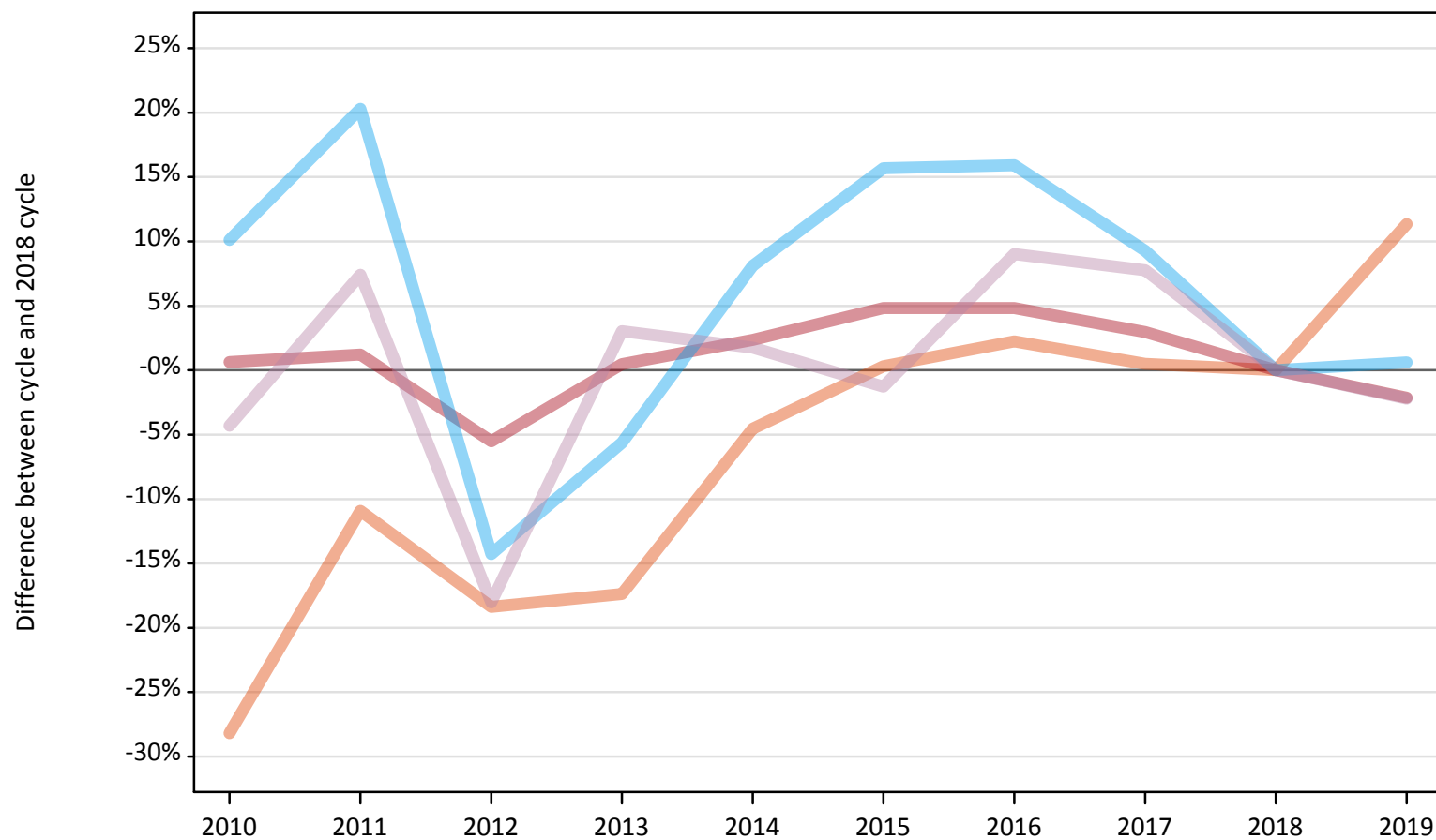
Applicant type	Status	2010	2011	2012	2013	2014	2015	2016	2017	2018	2019
All applicants	Placed	-3%	0%	-8%	-2%	1%	4%	5%	3%	0%	-1%

Note: The percentage change is not recorded in the above table for groups with fewer than 10 placed applicants in that cycle or in the 2018 cycle.

A.6 Placed main scheme applicants from England: 14 days after A level results day

All Main scheme placed routes (excluding Adjustment): difference between cycle and 2018 cycle

- Placed (Clearing)
- Placed (Firm)
- Placed (Insurance)
- Placed (Other)



Note: The percentage change is not plotted in the above chart for groups with fewer than 30 placed applicants in any one cycle.

A.7 Placed main scheme applicants from England: 14 days after A level results day

All Main scheme placed routes (excluding Adjustment): applicants at 14 days after A level results day

Applicant type	Status	2010	2011	2012	2013	2014	2015	2016	2017	2018	2019
Main scheme	Placed (Clearing)	24,120	29,930	27,420	27,760	32,070	33,700	34,350	33,760	33,600	37,410
	Placed (Firm)	273,760	275,350	257,050	273,330	278,430	285,190	285,200	280,130	272,040	266,220
	Placed (Insurance)	27,040	29,550	21,050	23,170	26,550	28,410	28,470	26,840	24,560	24,710
	Placed (Other)	9,120	10,230	7,810	9,820	9,690	9,410	10,390	10,270	9,530	9,320

A.8 Placed main scheme applicants from England: 14 days after A level results day

All Main scheme placed routes (excluding Adjustment): difference between cycle and 2018 cycle

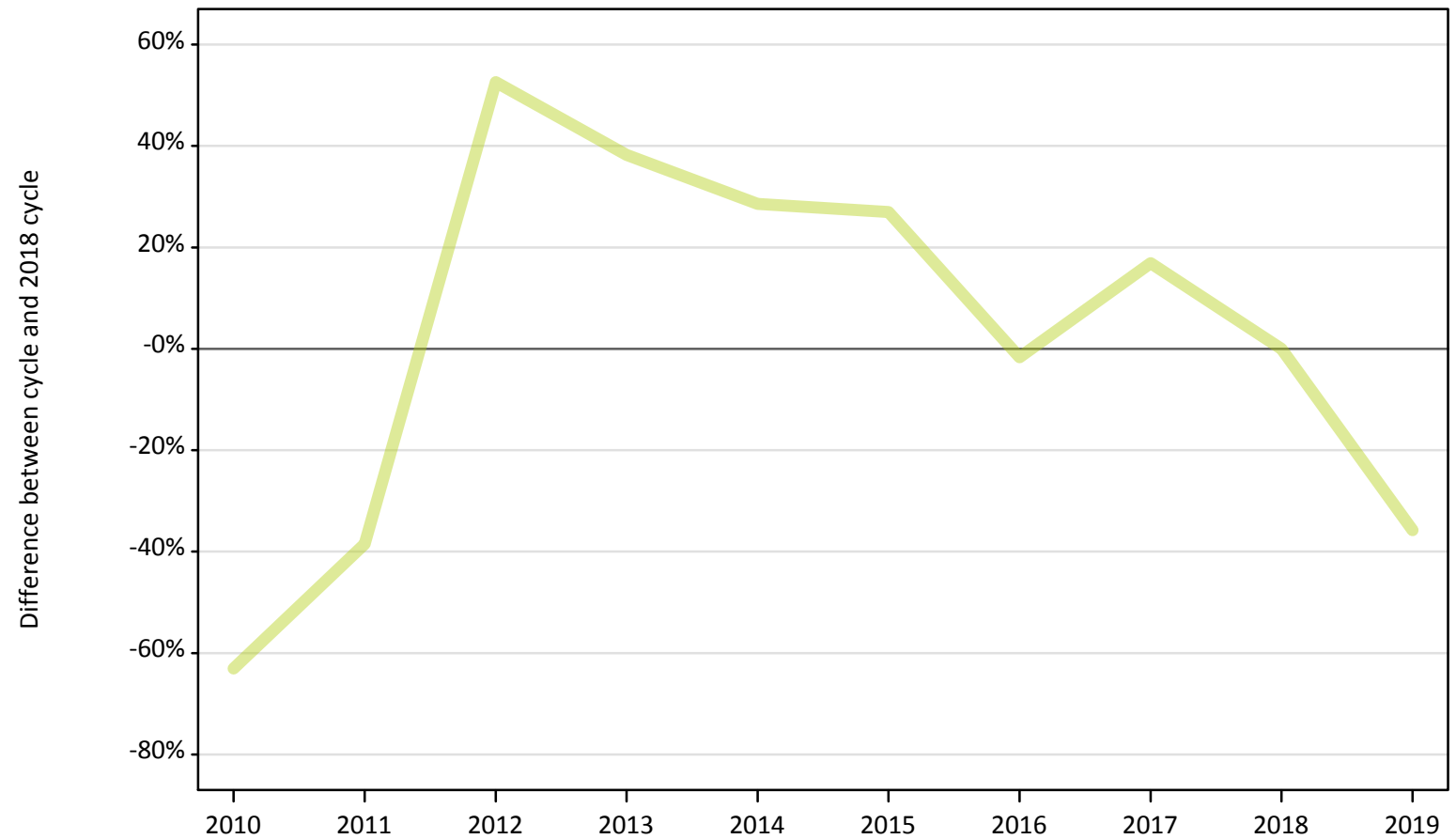
Applicant type	Status	2010	2011	2012	2013	2014	2015	2016	2017	2018	2019
Main scheme	Placed (Clearing)	-28%	-11%	-18%	-17%	-5%	0%	2%	1%	0%	11%
	Placed (Firm)	1%	1%	-6%	0%	2%	5%	5%	3%	0%	-2%
	Placed (Insurance)	10%	20%	-14%	-6%	8%	16%	16%	9%	0%	1%
	Placed (Other)	-4%	7%	-18%	3%	2%	-1%	9%	8%	0%	-2%

Note: The percentage change is not recorded in the above table for groups with fewer than 10 placed applicants in that cycle or in the 2018 cycle.

A.9 Main scheme applicants placed through adjustment: 14 days after A level results day

Placed through adjustment: difference between cycle and 2018 cycle

Placed (Adjustment)



Note: The percentage change is not plotted in the above chart for groups with fewer than 30 placed applicants in any one cycle.

A.10 Main scheme applicants placed through adjustment: 14 days after A level results day

Placed through adjustment: applicants at 14 days after A level results day

Applicant type	Status	2010	2011	2012	2013	2014	2015	2016	2017	2018	2019
Main scheme	Placed (Adjustment)	290	480	1,180	1,070	1,000	980	760	910	770	500

A.11 Main scheme applicants placed through adjustment: 14 days after A level results day

Placed through adjustment: difference between cycle and 2018 cycle

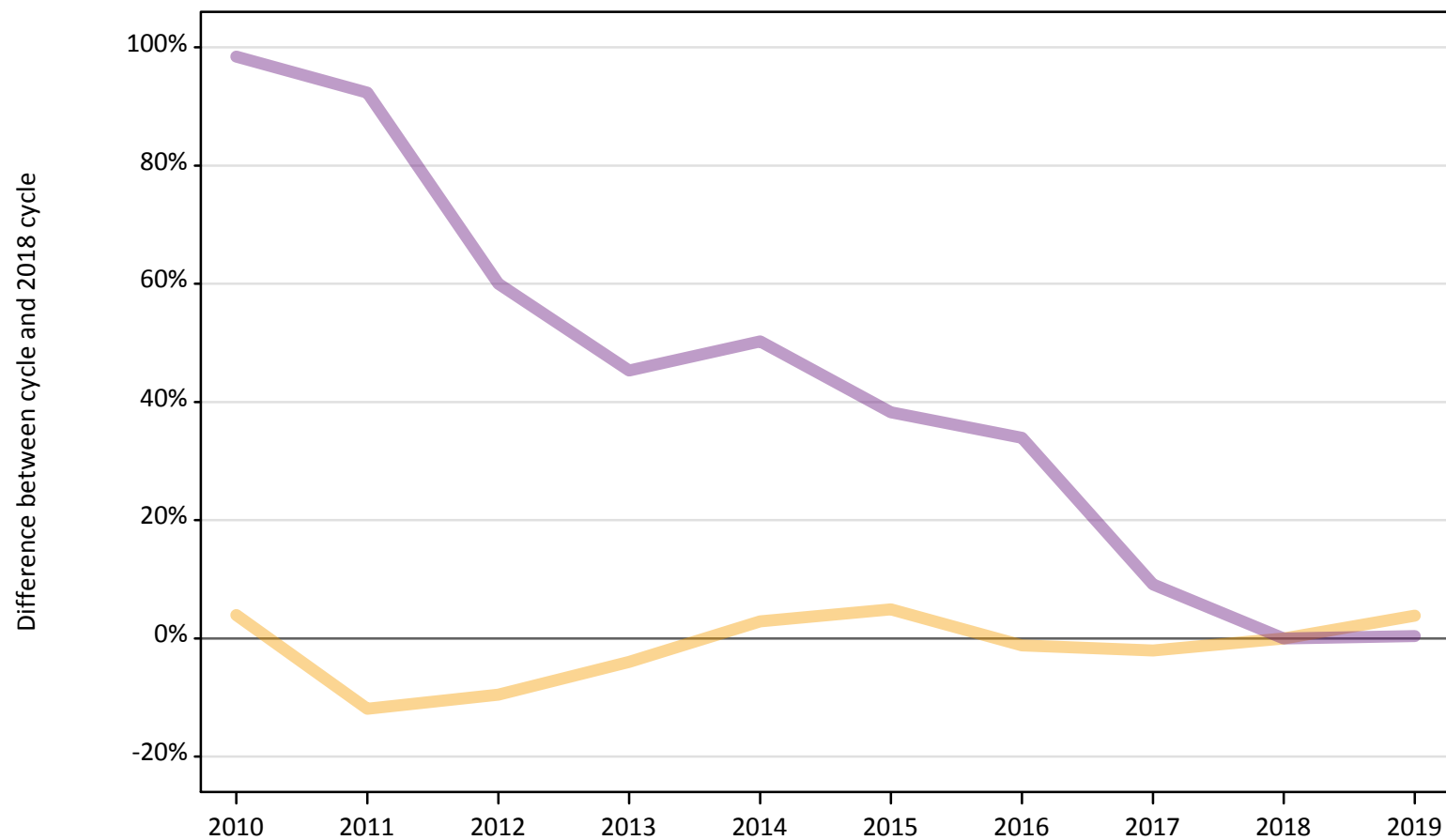
Applicant type	Status	2010	2011	2012	2013	2014	2015	2016	2017	2018	2019
Main scheme	Placed (Adjustment)	-63%	-39%	53%	38%	29%	27%	-2%	17%	0%	-36%

Note: The percentage change is not recorded in the above table for groups with fewer than 10 placed applicants in that cycle or in the 2018 cycle.

A.12 Main scheme applicants not currently placed from England: 14 days after A level results day

Applicants in unplaced states: difference between cycle and 2018 cycle

— Holding offer
— Free to be placed in Clearing



Note: The percentage change is not plotted in the above chart for groups with fewer than 30 unplaced applicants in any one cycle.

A.13 Main scheme applicants not currently placed from England: 14 days after A level results day

Applicants in unplaced states: applicants at 14 days after A level results day

Applicant type	Status	2010	2011	2012	2013	2014	2015	2016	2017	2018	2019
Main scheme	Holding offer	18,660	15,810	16,240	17,240	18,470	18,840	17,740	17,580	17,950	18,640
	Free to be placed in Clearing	112,420	108,960	90,650	82,330	85,120	78,320	75,860	61,830	56,650	56,870

A.14 Main scheme applicants not currently placed from England: 14 days after A level results day

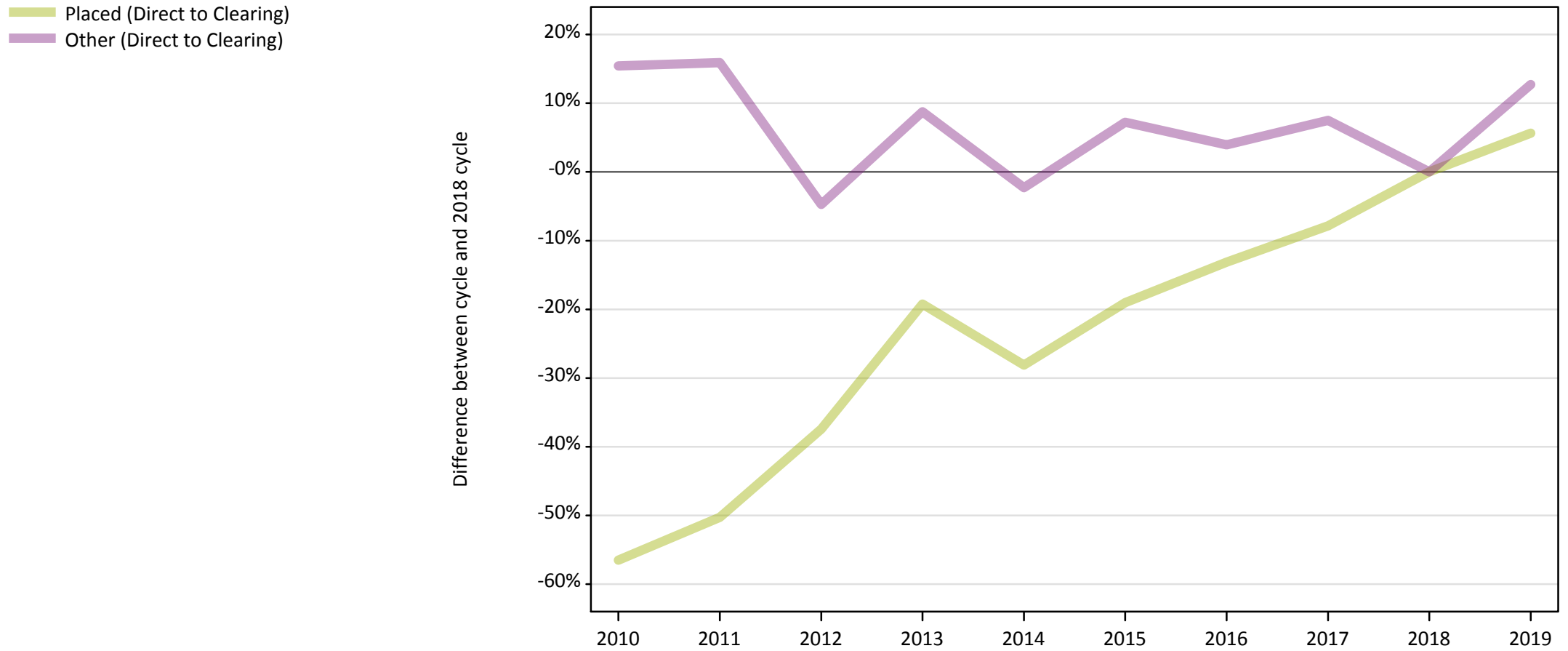
Applicants in unplaced states: difference between cycle and 2018 cycle

Applicant type	Status	2010	2011	2012	2013	2014	2015	2016	2017	2018	2019
Main scheme	Holding offer	4%	-12%	-10%	-4%	3%	5%	-1%	-2%	0%	4%
	Free to be placed in Clearing	98%	92%	60%	45%	50%	38%	34%	9%	0%	0%

Note: The percentage change is not recorded in the above table for groups with fewer than 10 unplaced applicants in that cycle or in the 2018 cycle.

A.15 Direct to Clearing applicants from England: 14 days after A level results day

Direct to Clearing: difference between cycle and 2018 cycle



Note: The percentage change is not plotted in the above chart for groups with fewer than 30 placed applicants in any one cycle.

A.16 Direct to Clearing applicants from England: 14 days after A level results day

Direct to Clearing 14 days after A level results day

Applicant type	Status	2010	2011	2012	2013	2014	2015	2016	2017	2018	2019
Direct to Clearing	Placed (Direct to Clearing)	3,810	4,360	5,480	7,080	6,300	7,100	7,610	8,070	8,760	9,260
	Other (Direct to Clearing)	6,680	6,710	5,510	6,290	5,650	6,200	6,010	6,220	5,780	6,520

A.17 Direct to Clearing applicants from England: 14 days after A level results day

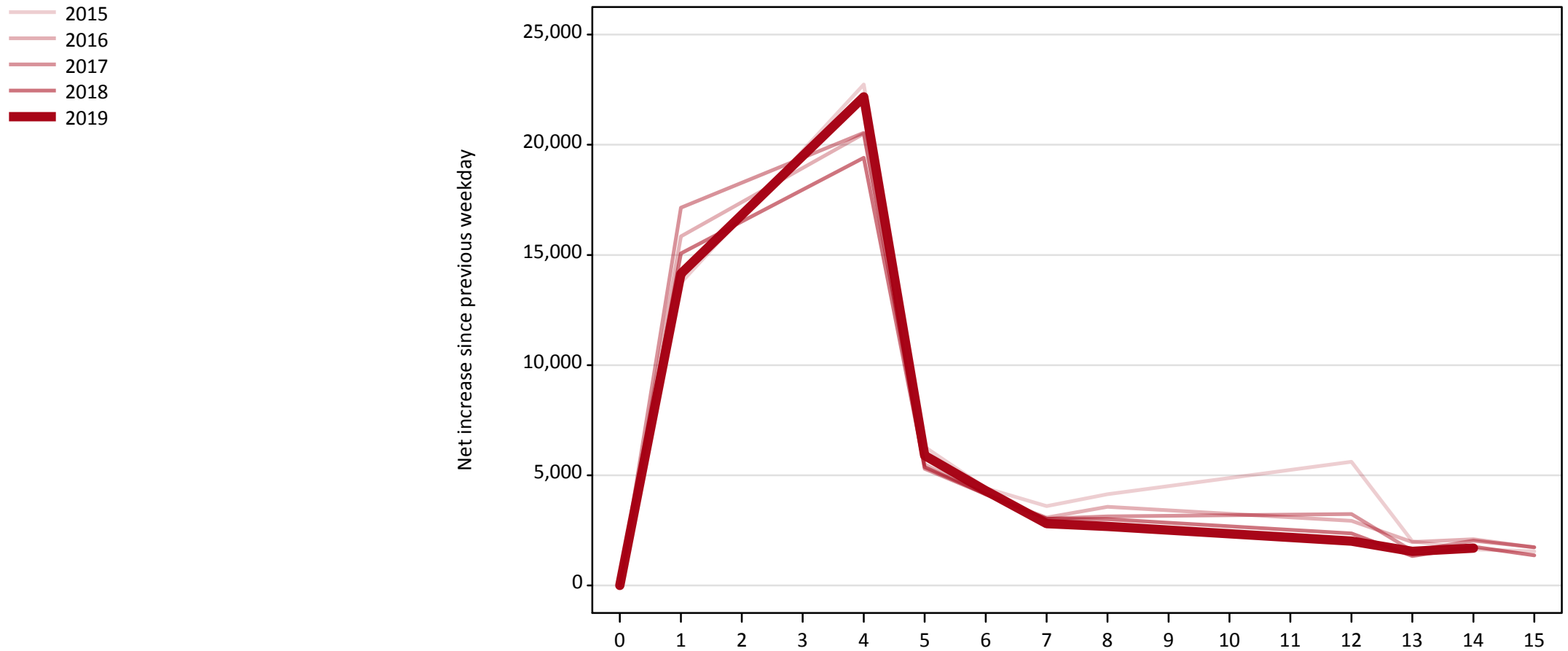
Direct to Clearing: difference between cycle and 2018 cycle

Applicant type	Status	2010	2011	2012	2013	2014	2015	2016	2017	2018	2019
Direct to Clearing	Placed (Direct to Clearing)	-57%	-50%	-37%	-19%	-28%	-19%	-13%	-8%	0%	6%
	Other (Direct to Clearing)	15%	16%	-5%	9%	-2%	7%	4%	8%	0%	13%

Note: The percentage change is not recorded in the above table for groups with fewer than 10 placed applicants in that cycle or in the 2018 cycle.

A.18 All Placed: Daily net change (from England)

Net increase since previous weekday (2019 cycle up to 14 days after A level results day)

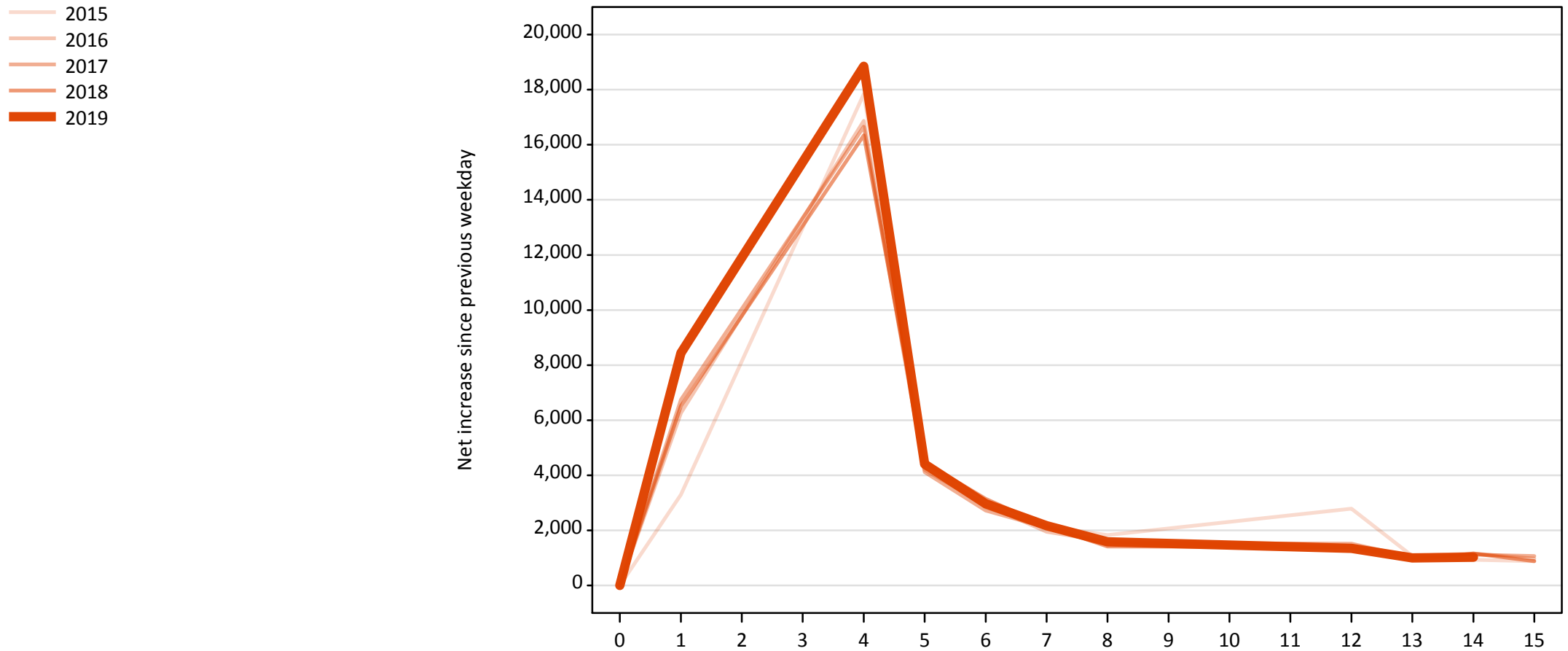


A.19 All Placed: Daily net change (from England)

Net increase since previous weekday (2019 cycle up to 14 days after A level results day)

Applicant status, days since A level results day		2015	2016	2017	2018	2019
All Placed	0	0	0	0	0	0
	1	13,730	15,840	17,150	15,070	14,150
	4	22,730	20,500	20,540	19,410	22,170
	5	6,300	5,500	5,300	5,370	5,900
	6	4,410	4,120	4,140	4,150	4,300
	7	3,600	3,080	3,030	3,030	2,800
	8	4,140	3,570	3,130	3,010	2,680
	12	5,610	2,940	3,240	2,360	2,020
	13	2,000	1,970	1,560	1,340	1,550
	14	1,640	2,100	2,030	1,760	1,690
	15	1,540	1,730	1,740	1,360	

A.20 Placed through Clearing only: Daily net change (from England)
Net increase since previous weekday (2019 cycle up to 14 days after A level results day)



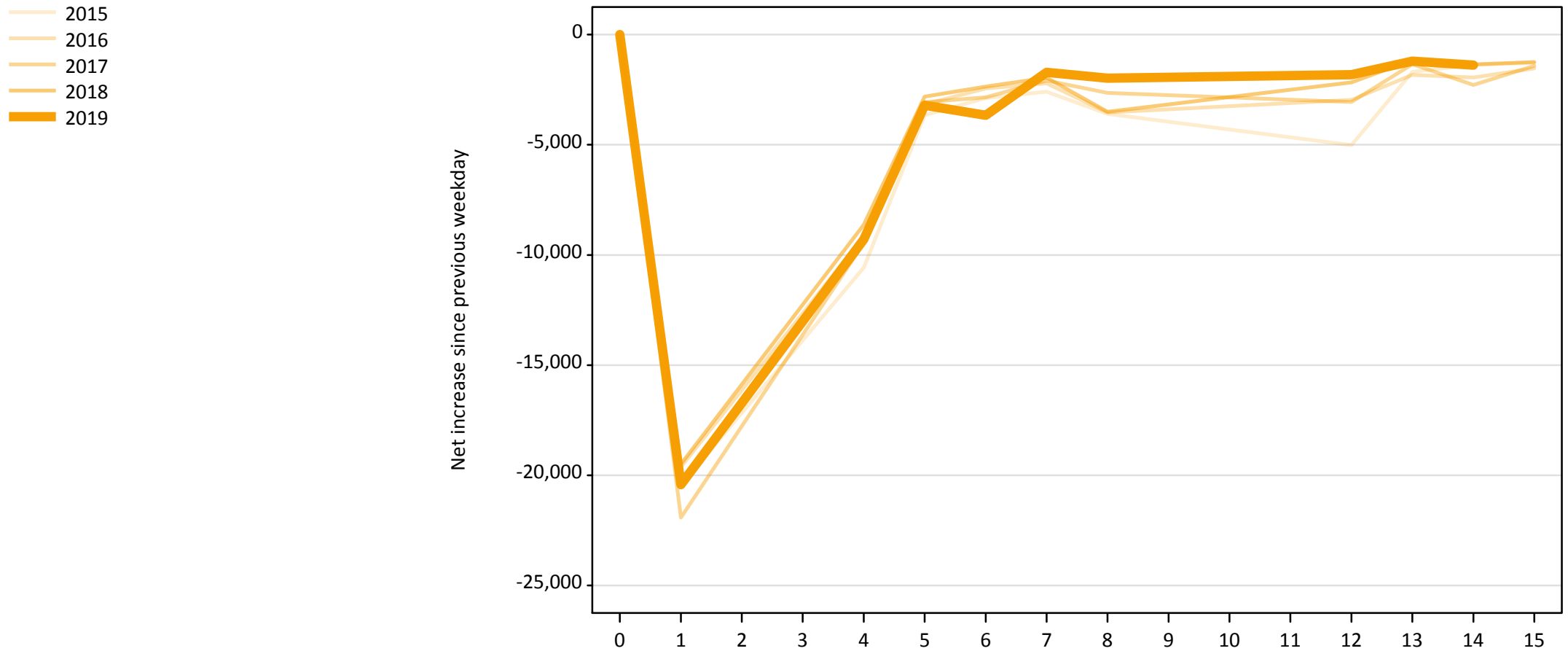
A.21 Placed through Clearing only: Daily net change (from England)

Net increase since previous weekday (2019 cycle up to 14 days after A level results day)

Applicant status, days since A level results day		2015	2016	2017	2018	2019
Placed through Clearing only	0	0	0	0	0	0
	1	3,300	6,260	6,740	6,510	8,440
	4	17,850	16,870	16,660	16,340	18,850
	5	4,470	4,190	4,120	4,470	4,410
	6	2,830	2,940	2,720	3,150	2,970
	7	2,140	1,950	2,100	2,160	2,170
	8	1,830	1,590	1,540	1,410	1,580
	12	2,790	1,360	1,510	1,390	1,350
	13	1,060	1,080	1,020	920	1,000
	14	930	1,160	1,120	1,160	1,030
	15	880	970	1,060	880	

A.22 Holding Offer: Daily net change (from England)

Net increase since previous weekday (2019 cycle up to 14 days after A level results day)



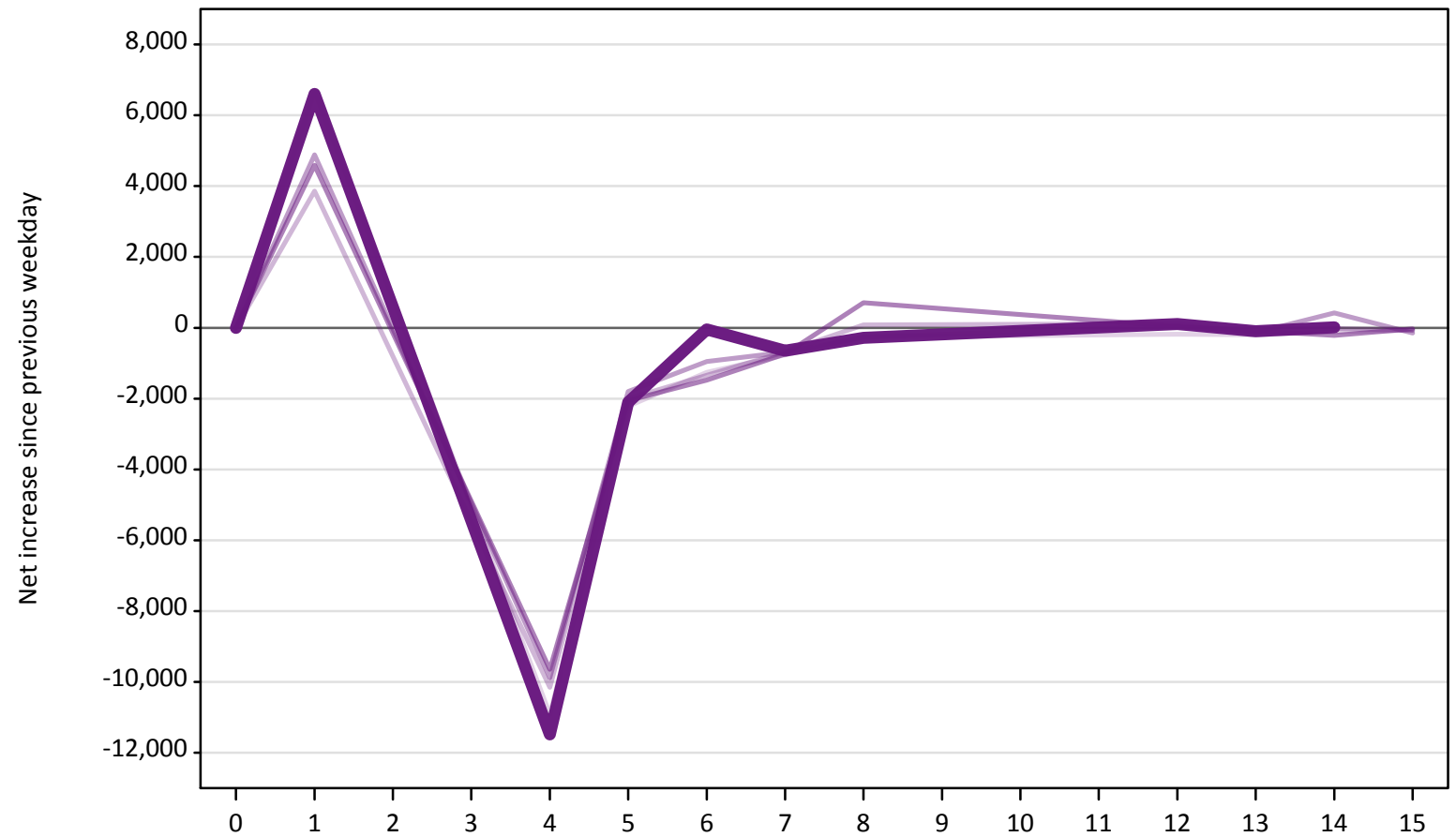
A.23 Holding Offer: Daily net change (from England)

Net increase since previous weekday (2019 cycle up to 14 days after A level results day)

Applicant status, days since A level results day		2015	2016	2017	2018	2019
Holding Offer	0	0	0	0	0	0
	1	-20,460	-19,620	-21,920	-19,500	-20,430
	4	-10,580	-9,160	-9,470	-8,630	-9,300
	5	-3,660	-3,160	-3,060	-2,820	-3,210
	6	-2,870	-2,450	-2,840	-2,360	-3,660
	7	-2,590	-2,210	-2,080	-1,960	-1,720
	8	-3,590	-3,540	-2,650	-3,510	-1,980
	12	-5,010	-2,970	-3,060	-2,170	-1,820
	13	-1,690	-1,830	-1,340	-1,160	-1,210
	14	-1,370	-1,950	-2,290	-1,360	-1,390
	15	-1,280	-1,530	-1,420	-1,240	

A.24 Free to be placed in Clearing: Daily net change (from England)
Net increase since previous weekday (2019 cycle up to 14 days after A level results day)

- 2015
- 2016
- 2017
- 2018
- 2019



A.25 Free to be placed in Clearing: Daily net change (from England)

Net increase since previous weekday (2019 cycle up to 14 days after A level results day)

Applicant status, days since A level results day		2015	2016	2017	2018	2019
Free to be placed in Clearing	0	0	0	0	0	0
	1	6,690	3,860	4,890	4,590	6,600
	4	-10,920	-10,160	-9,880	-9,640	-11,480
	5	-2,220	-2,000	-1,800	-2,050	-2,110
	6	-1,260	-1,340	-950	-1,480	-40
	7	-770	-680	-690	-740	-640
	8	-270	80	-270	710	-290
	12	-190	110	50	40	110
	13	-200	-130	-140	-90	-100
	14	-120	-20	420	-220	10
	15	-70	-70	-150	-30	