

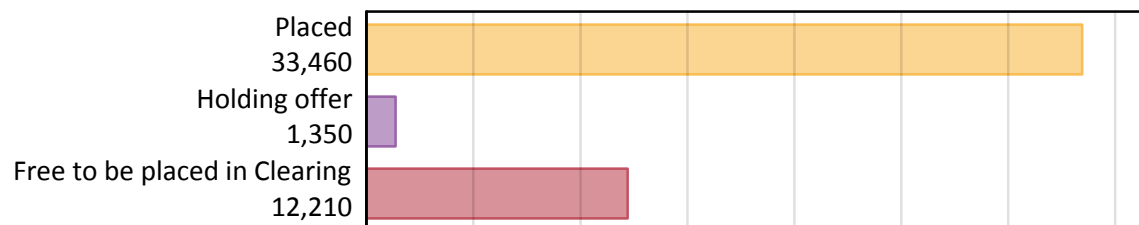
# Daily Clearing Analysis: Overview

Analysis at 00:05 on Thursday 29 August 2019 (14 days after A level results day)

## A.1 Applicants by type and status from Scotland, 2019 cycle

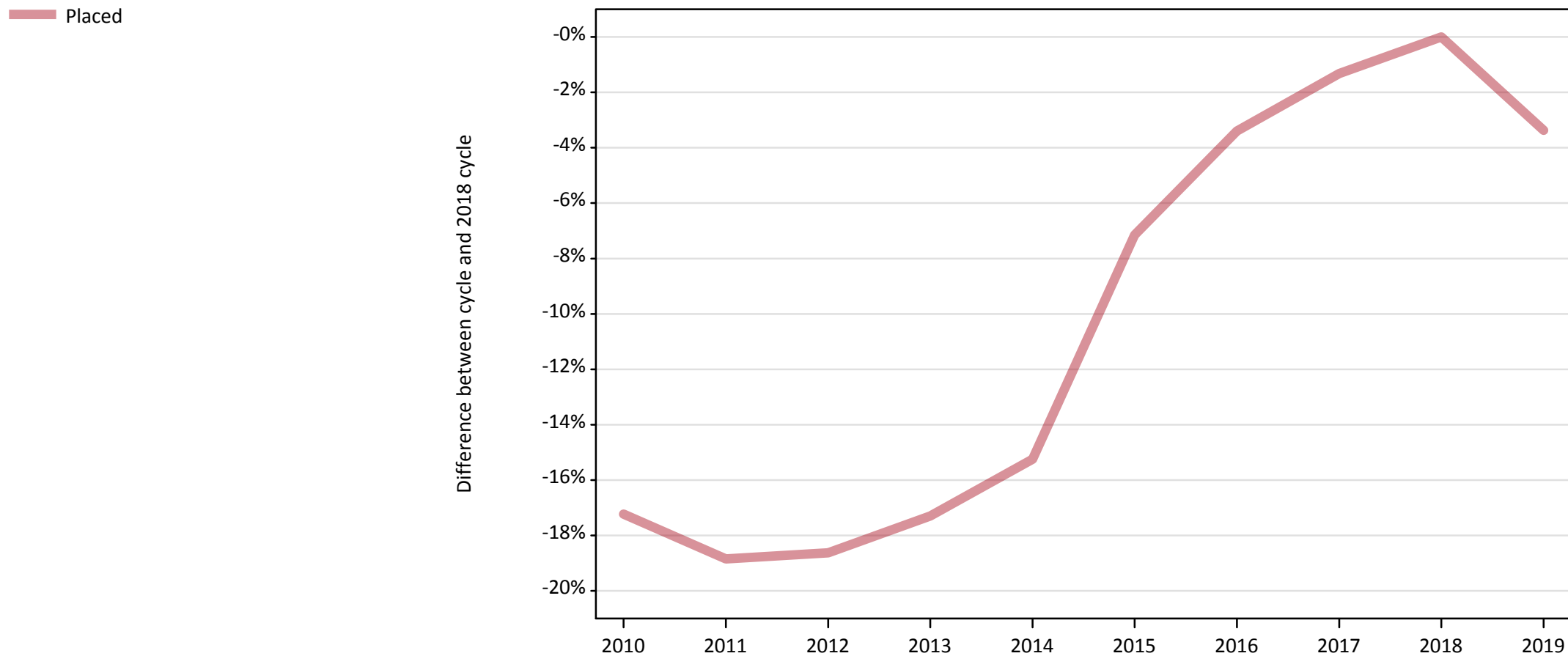
Applicant type	Status	2019
Main scheme	Placed (Clearing)	1,180
	Placed (Adjustment)	0
	Placed (Firm)	30,020
	Placed (Insurance)	1,250
	Placed (Other)	580
	Holding offer	1,350
	Free to be placed in Clearing	12,210
Direct to Clearing	Placed (Direct to Clearing)	410
	Other (Direct to Clearing)	420
All applicants	Placed	33,460

## A.2 Summary of applicants who are placed, holding offers or free to be placed in Clearing ( Scotland )



### A.3 All placed applicants from Scotland: 14 days after A level results day

All placed applicants: difference between cycle and 2018 cycle



Note: The percentage change is not plotted in the above chart for groups with fewer than 30 placed applicants in any one cycle.

#### A.4 All placed applicants from Scotland: 14 days after A level results day

All placed applicants: applicants at 14 days after A level results day

Applicant type	Status	2010	2011	2012	2013	2014	2015	2016	2017	2018	2019
All applicants	Placed	28,660	28,100	28,170	28,640	29,340	32,150	33,450	34,170	34,620	33,460

#### A.5 All placed applicants from Scotland: 14 days after A level results day

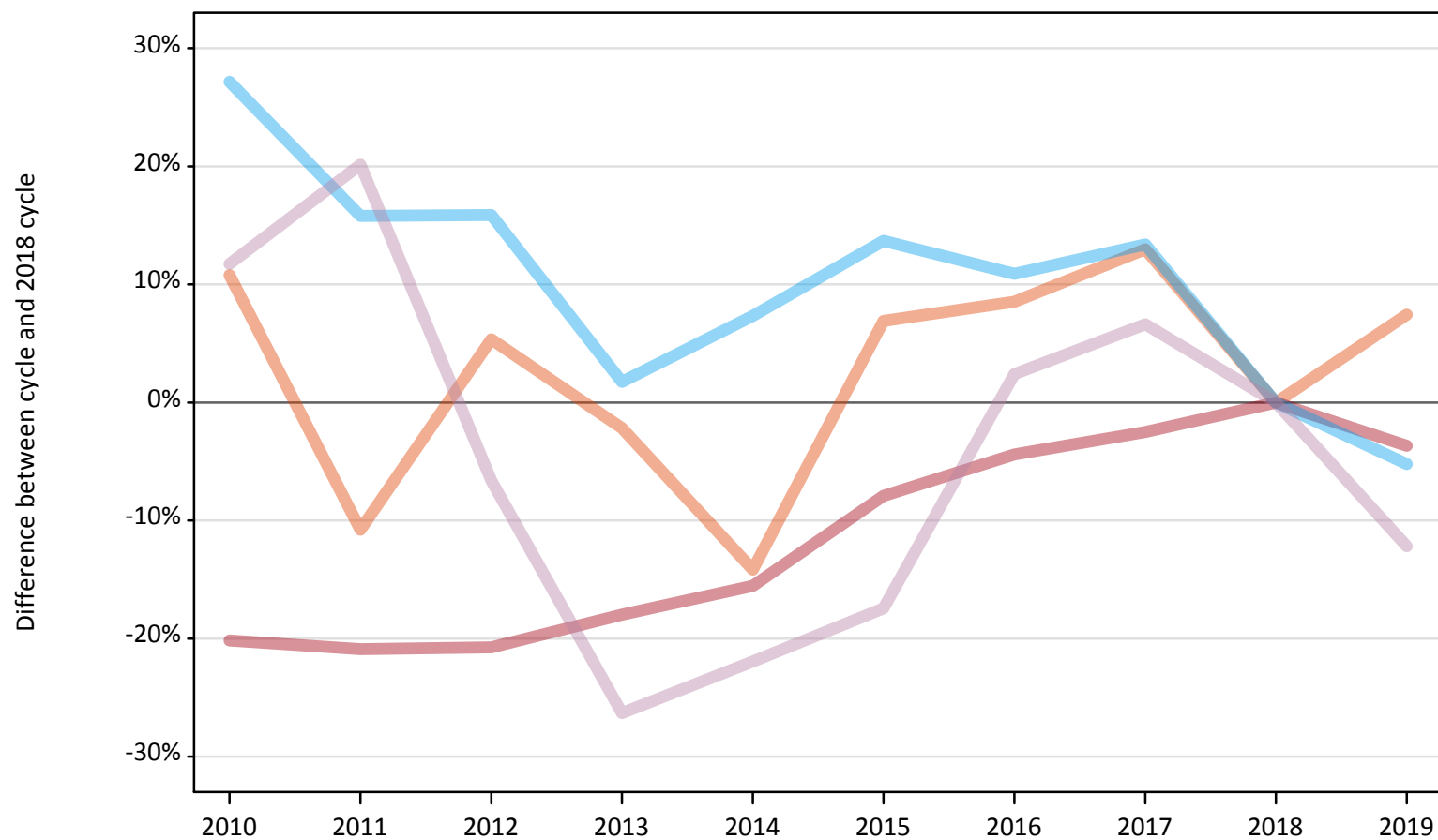
All placed applicants: difference between cycle and 2018 cycle

Applicant type	Status	2010	2011	2012	2013	2014	2015	2016	2017	2018	2019
All applicants	Placed	-17%	-19%	-19%	-17%	-15%	-7%	-3%	-1%	0%	-3%

Note: The percentage change is not recorded in the above table for groups with fewer than 10 placed applicants in that cycle or in the 2018 cycle.

**A.6 Placed main scheme applicants from Scotland: 14 days after A level results day**  
All Main scheme placed routes (excluding Adjustment): difference between cycle and 2018 cycle

- Placed (Clearing)
- Placed (Firm)
- Placed (Insurance)
- Placed (Other)



Note: The percentage change is not plotted in the above chart for groups with fewer than 30 placed applicants in any one cycle.

### A.7 Placed main scheme applicants from Scotland: 14 days after A level results day

All Main scheme placed routes (excluding Adjustment): applicants at 14 days after A level results day

Applicant type	Status	2010	2011	2012	2013	2014	2015	2016	2017	2018	2019
Main scheme	Placed (Clearing)	1,220	980	1,160	1,080	950	1,180	1,200	1,250	1,100	1,180
	Placed (Firm)	24,880	24,650	24,700	25,560	26,320	28,700	29,790	30,390	31,170	30,020
	Placed (Insurance)	1,680	1,530	1,530	1,350	1,420	1,500	1,470	1,500	1,320	1,250
	Placed (Other)	740	800	620	490	520	550	680	710	670	580

### A.8 Placed main scheme applicants from Scotland: 14 days after A level results day

All Main scheme placed routes (excluding Adjustment): difference between cycle and 2018 cycle

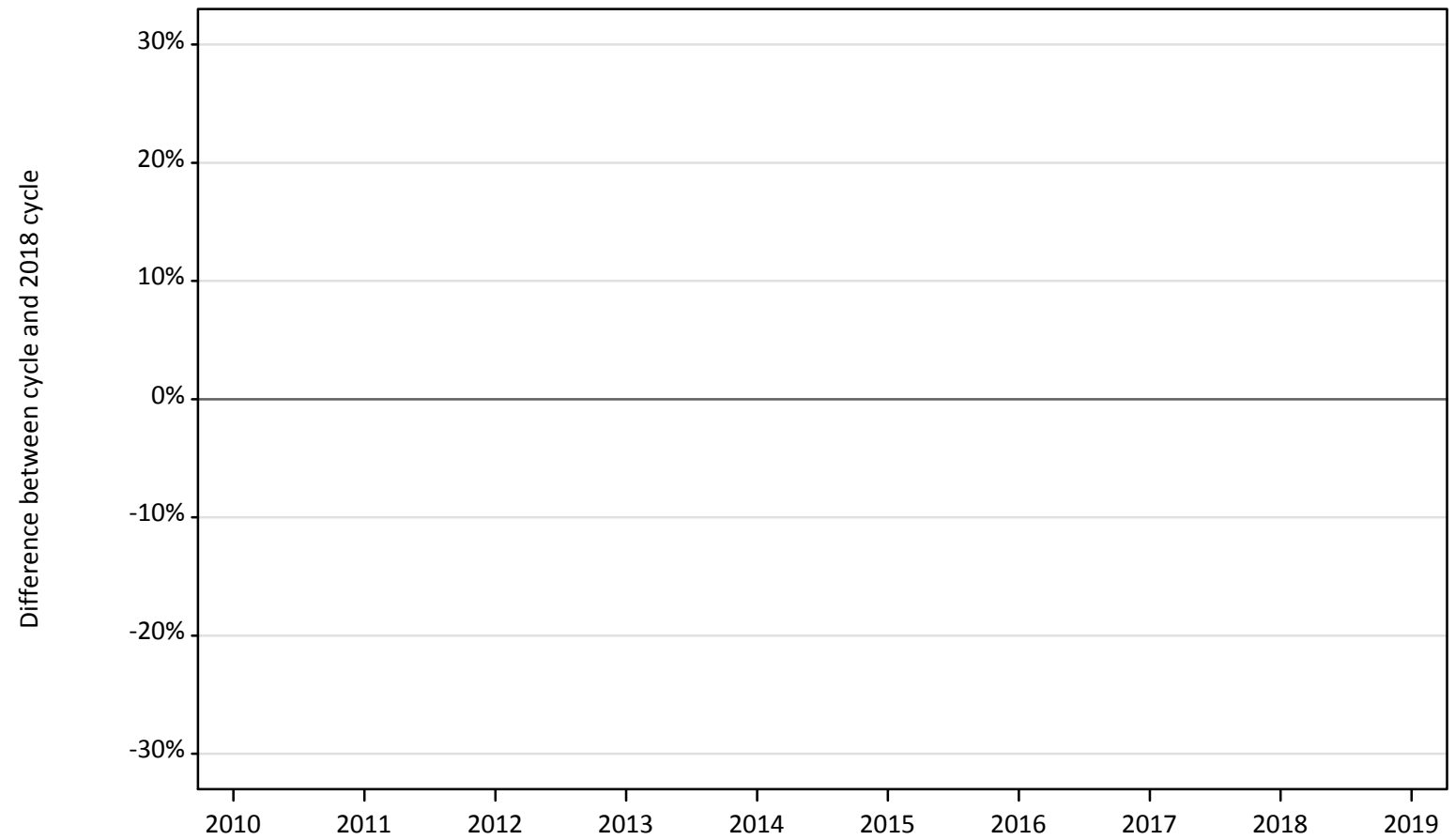
Applicant type	Status	2010	2011	2012	2013	2014	2015	2016	2017	2018	2019
Main scheme	Placed (Clearing)	11%	-11%	5%	-2%	-14%	7%	9%	13%	0%	7%
	Placed (Firm)	-20%	-21%	-21%	-18%	-16%	-8%	-4%	-3%	0%	-4%
	Placed (Insurance)	27%	16%	16%	2%	7%	14%	11%	13%	0%	-5%
	Placed (Other)	12%	20%	-7%	-26%	-22%	-17%	2%	7%	0%	-12%

Note: The percentage change is not recorded in the above table for groups with fewer than 10 placed applicants in that cycle or in the 2018 cycle.

## A.9 Main scheme applicants placed through adjustment: 14 days after A level results day

Placed through adjustment: difference between cycle and 2018 cycle

Placed (Adjustment)



Note: The percentage change is not plotted in the above chart for groups with fewer than 30 placed applicants in any one cycle.

### A.10 Main scheme applicants placed through adjustment: 14 days after A level results day

Placed through adjustment: applicants at 14 days after A level results day

Applicant type	Status	2010	2011	2012	2013	2014	2015	2016	2017	2018	2019
Main scheme	Placed (Adjustment)	0	10	20	10	10	10	10	0	10	0

### A.11 Main scheme applicants placed through adjustment: 14 days after A level results day

Placed through adjustment: difference between cycle and 2018 cycle

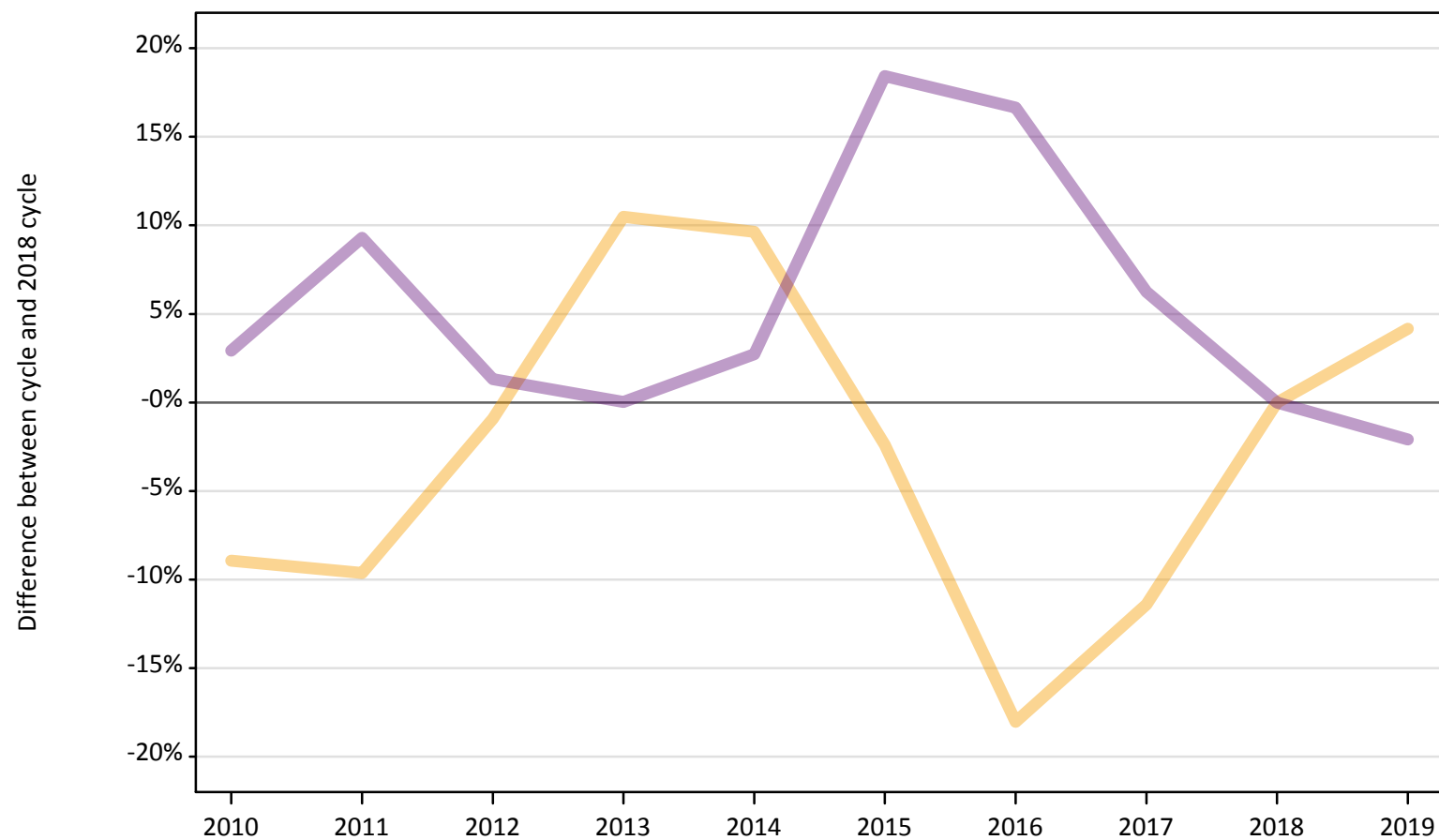
Applicant type	Status	2010	2011	2012	2013	2014	2015	2016	2017	2018	2019
Main scheme	Placed (Adjustment)										

Note: The percentage change is not recorded in the above table for groups with fewer than 10 placed applicants in that cycle or in the 2018 cycle.

## A.12 Main scheme applicants not currently placed from Scotland: 14 days after A level results day

Applicants in unplaced states: difference between cycle and 2018 cycle

— Holding offer  
— Free to be placed in Clearing



Note: The percentage change is not plotted in the above chart for groups with fewer than 30 unplaced applicants in any one cycle.



### A.13 Main scheme applicants not currently placed from Scotland: 14 days after A level results day

Applicants in unplaced states: applicants at 14 days after A level results day

Applicant type	Status	2010	2011	2012	2013	2014	2015	2016	2017	2018	2019
Main scheme	Holding offer	1,180	1,170	1,290	1,430	1,420	1,270	1,060	1,150	1,300	1,350
	Free to be placed in Clearing	12,830	13,630	12,630	12,470	12,810	14,770	14,550	13,250	12,470	12,210

### A.14 Main scheme applicants not currently placed from Scotland: 14 days after A level results day

Applicants in unplaced states: difference between cycle and 2018 cycle

Applicant type	Status	2010	2011	2012	2013	2014	2015	2016	2017	2018	2019
Main scheme	Holding offer	-9%	-10%	-1%	10%	10%	-2%	-18%	-11%	0%	4%
	Free to be placed in Clearing	3%	9%	1%	0%	3%	18%	17%	6%	0%	-2%

Note: The percentage change is not recorded in the above table for groups with fewer than 10 unplaced applicants in that cycle or in the 2018 cycle.

### A.15 Direct to Clearing applicants from Scotland: 14 days after A level results day

Direct to Clearing: difference between cycle and 2018 cycle



Note: The percentage change is not plotted in the above chart for groups with fewer than 30 placed applicants in any one cycle.

### A.16 Direct to Clearing applicants from Scotland: 14 days after A level results day

Direct to Clearing 14 days after A level results day

Applicant type	Status	2010	2011	2012	2013	2014	2015	2016	2017	2018	2019
Direct to Clearing	Placed (Direct to Clearing)	130	130	140	150	130	210	300	330	360	410
	Other (Direct to Clearing)	350	240	270	280	260	350	350	340	340	420

### A.17 Direct to Clearing applicants from Scotland: 14 days after A level results day

Direct to Clearing: difference between cycle and 2018 cycle

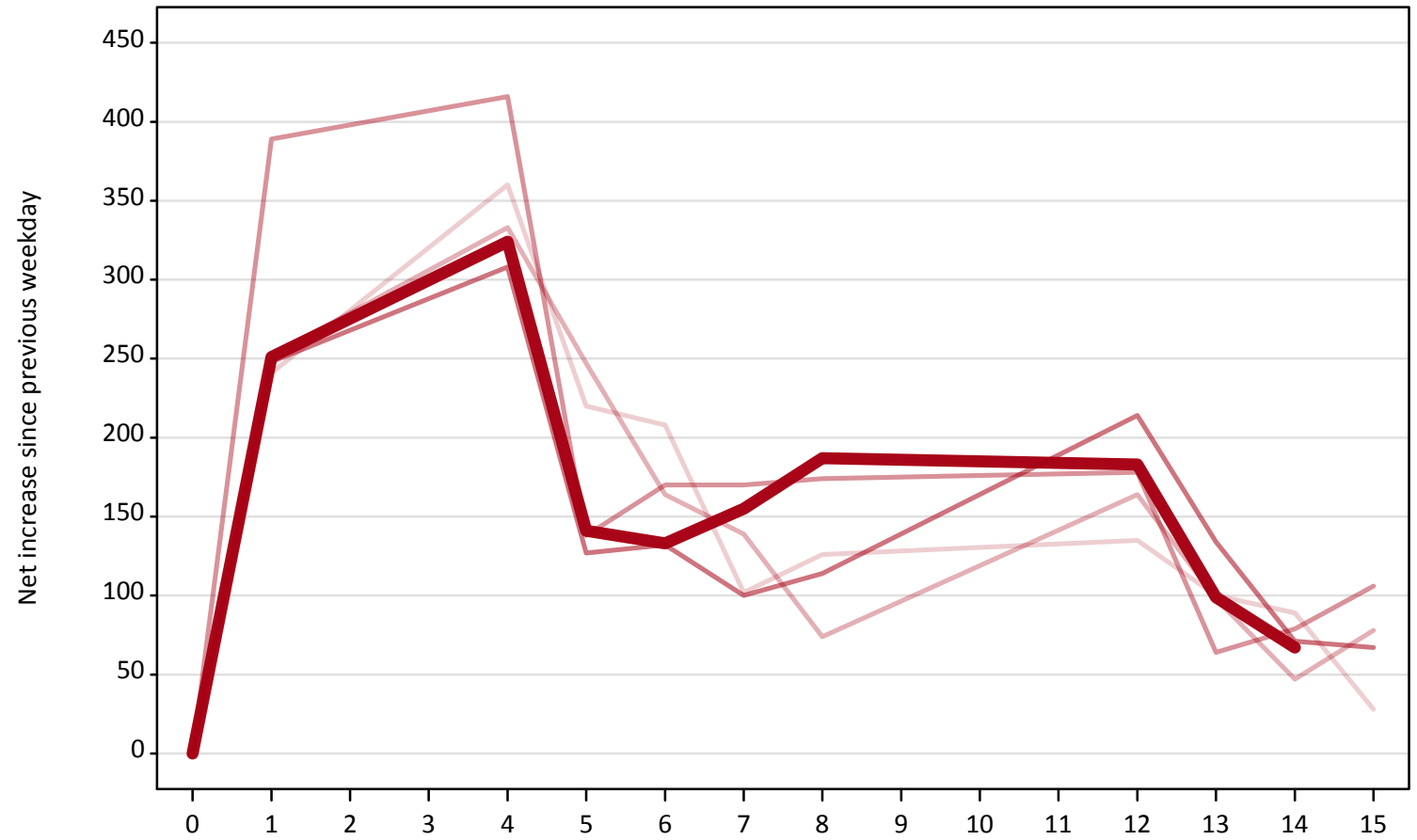
Applicant type	Status	2010	2011	2012	2013	2014	2015	2016	2017	2018	2019
Direct to Clearing	Placed (Direct to Clearing)	-65%	-65%	-61%	-59%	-64%	-41%	-17%	-10%	0%	13%
	Other (Direct to Clearing)	4%	-29%	-20%	-18%	-25%	4%	4%	-1%	0%	24%

Note: The percentage change is not recorded in the above table for groups with fewer than 10 placed applicants in that cycle or in the 2018 cycle.

### A.18 All Placed: Daily net change (from Scotland)

Net increase since previous weekday (2019 cycle up to 14 days after A level results day)

- 2015
- 2016
- 2017
- 2018
- 2019**

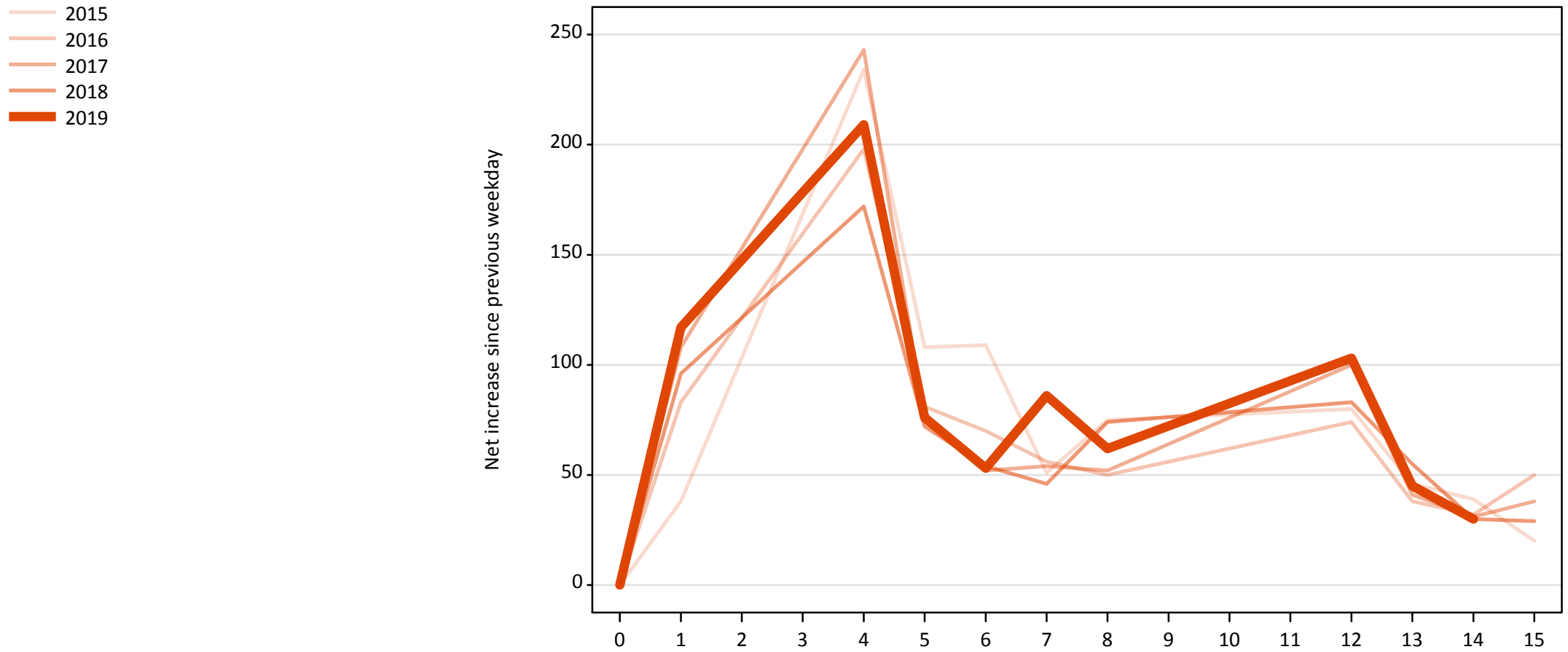


**A.19 All Placed: Daily net change (from Scotland)**

Net increase since previous weekday (2019 cycle up to 14 days after A level results day)

Applicant status, days since A level results day		2015	2016	2017	2018	2019
All Placed	0	0	0	0	0	0
	1	240	250	390	250	250
	4	360	330	420	310	320
	5	220	250	140	130	140
	6	210	160	170	130	130
	7	100	140	170	100	160
	8	130	70	170	110	190
	12	140	160	180	210	180
	13	100	100	60	130	100
	14	90	50	80	70	70
	15	30	80	110	70	

**A.20 Placed through Clearing only: Daily net change (from Scotland)**  
Net increase since previous weekday (2019 cycle up to 14 days after A level results day)



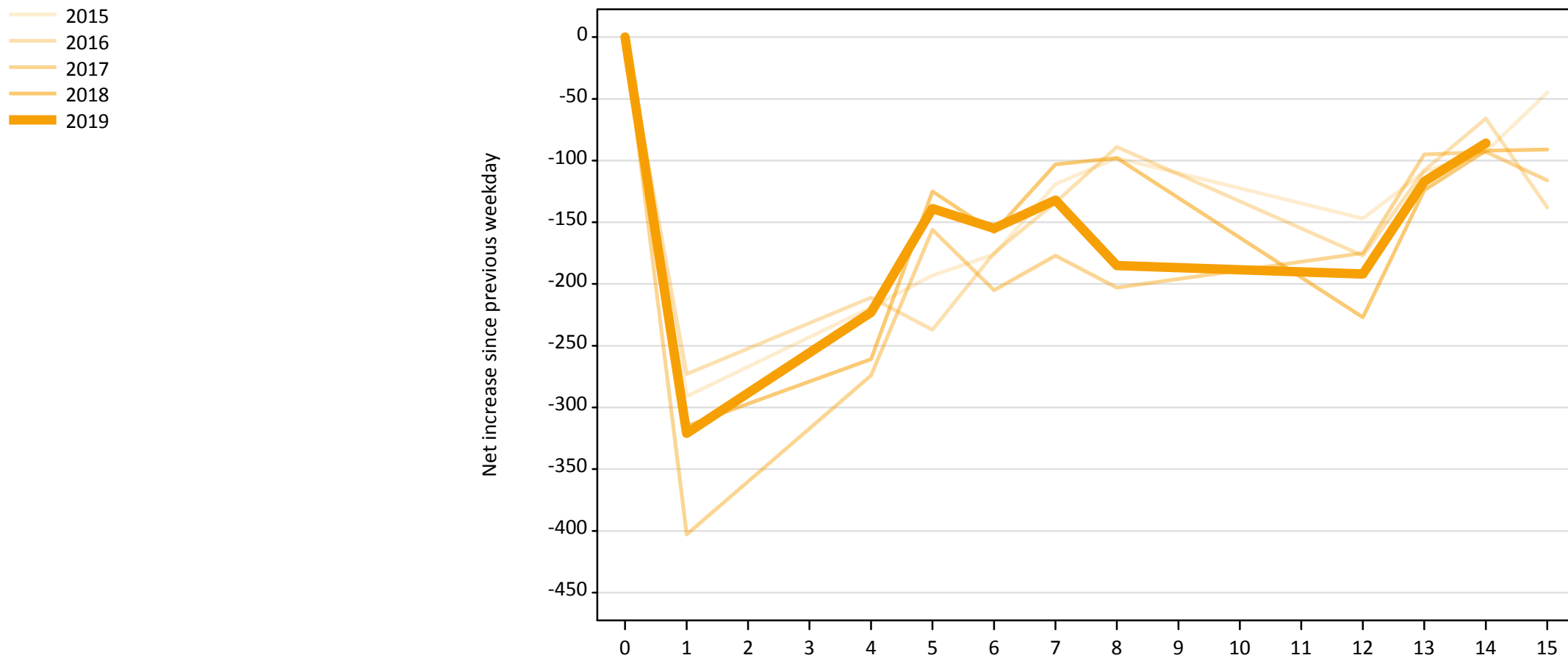
### A.21 Placed through Clearing only: Daily net change (from Scotland)

Net increase since previous weekday (2019 cycle up to 14 days after A level results day)

Applicant status, days since A level results day		2015	2016	2017	2018	2019
Placed through Clearing only	0	0	0	0	0	0
	1	40	80	110	100	120
	4	230	200	240	170	210
	5	110	80	80	70	80
	6	110	70	50	50	50
	7	50	60	50	50	90
	8	80	50	50	70	60
	12	80	70	100	80	100
	13	50	40	40	60	50
	14	40	30	30	30	30
	15	20	50	40	30	

### A.22 Holding Offer: Daily net change (from Scotland)

Net increase since previous weekday (2019 cycle up to 14 days after A level results day)





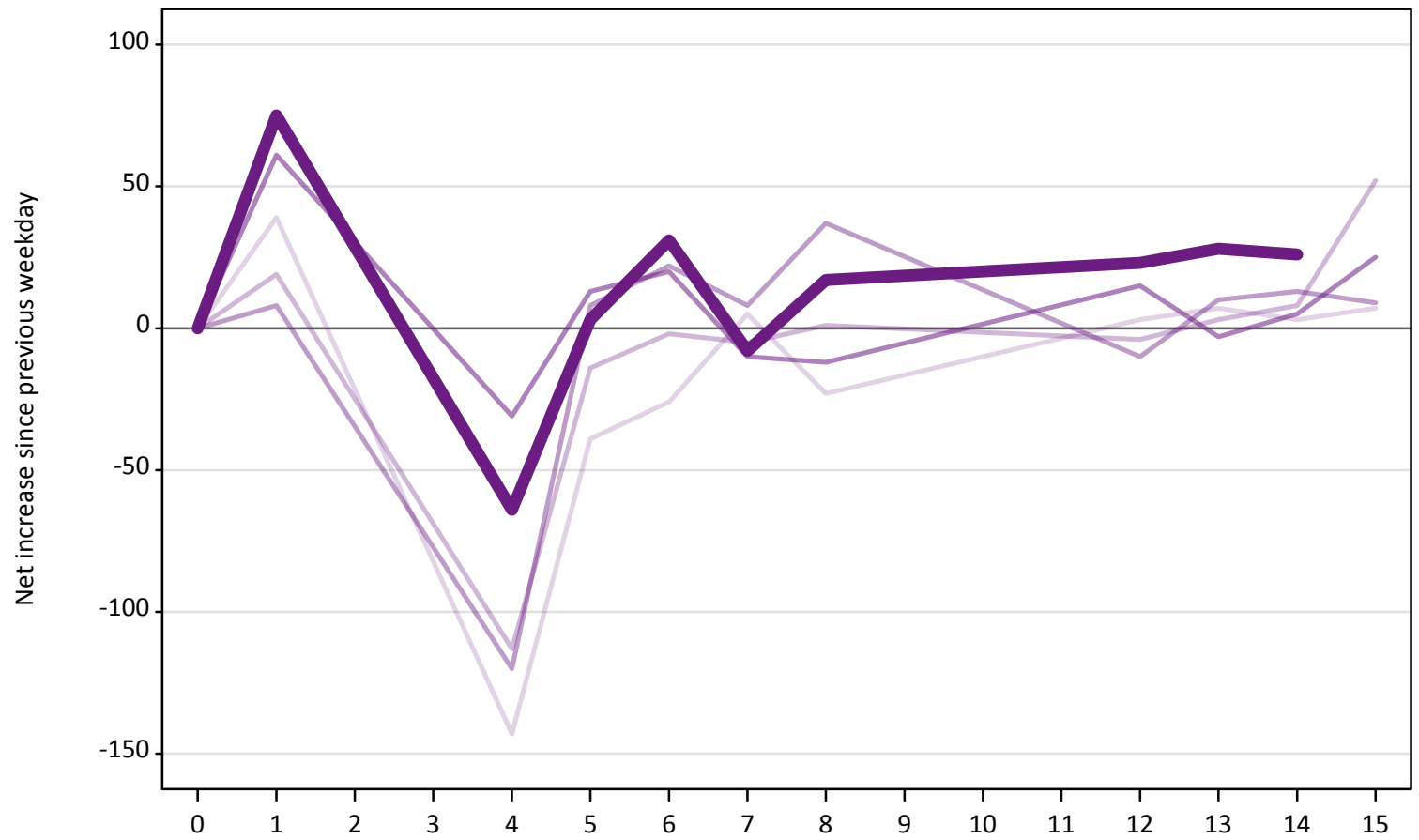
### A.23 Holding Offer: Daily net change (from Scotland)

Net increase since previous weekday (2019 cycle up to 14 days after A level results day)

Applicant status, days since A level results day		2015	2016	2017	2018	2019
Holding Offer	0	0	0	0	0	0
	1	-290	-270	-400	-320	-320
	4	-220	-210	-270	-260	-220
	5	-190	-240	-160	-130	-140
	6	-180	-180	-210	-160	-160
	7	-120	-130	-180	-100	-130
	8	-100	-90	-200	-100	-190
	12	-150	-180	-180	-230	-190
	13	-110	-110	-100	-120	-120
	14	-90	-70	-90	-90	-90
	15	-50	-140	-120	-90	

**A.24 Free to be placed in Clearing: Daily net change (from Scotland)**  
Net increase since previous weekday (2019 cycle up to 14 days after A level results day)

- 2015
- 2016
- 2017
- 2018
- 2019



### A.25 Free to be placed in Clearing: Daily net change (from Scotland)

Net increase since previous weekday (2019 cycle up to 14 days after A level results day)

Applicant status, days since A level results day		2015	2016	2017	2018	2019
Free to be placed in Clearing	0	0	0	0	0	0
	1	40	20	10	60	80
	4	-140	-110	-120	-30	-60
	5	-40	-10	10	10	0
	6	-30	0	20	20	30
	7	10	-10	10	-10	-10
	8	-20	0	40	-10	20
	12	0	0	-10	20	20
	13	10	0	10	0	30
	14	0	10	10	10	30
	15	10	50	10	30	