

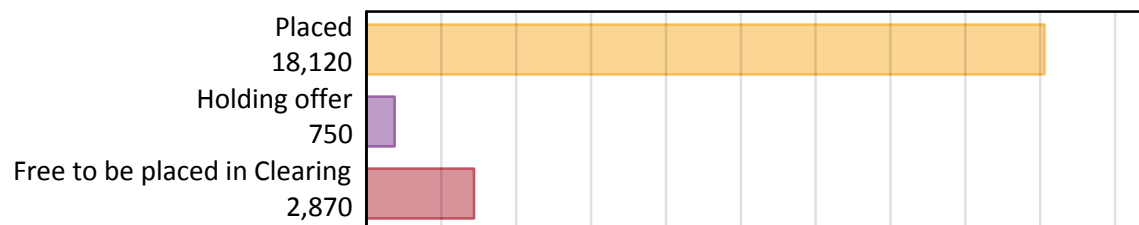
# Daily Clearing Analysis: Overview

Analysis at 00:05 on Thursday 29 August 2019 (14 days after A level results day)

## A.1 Applicants by type and status from Wales, 2019 cycle

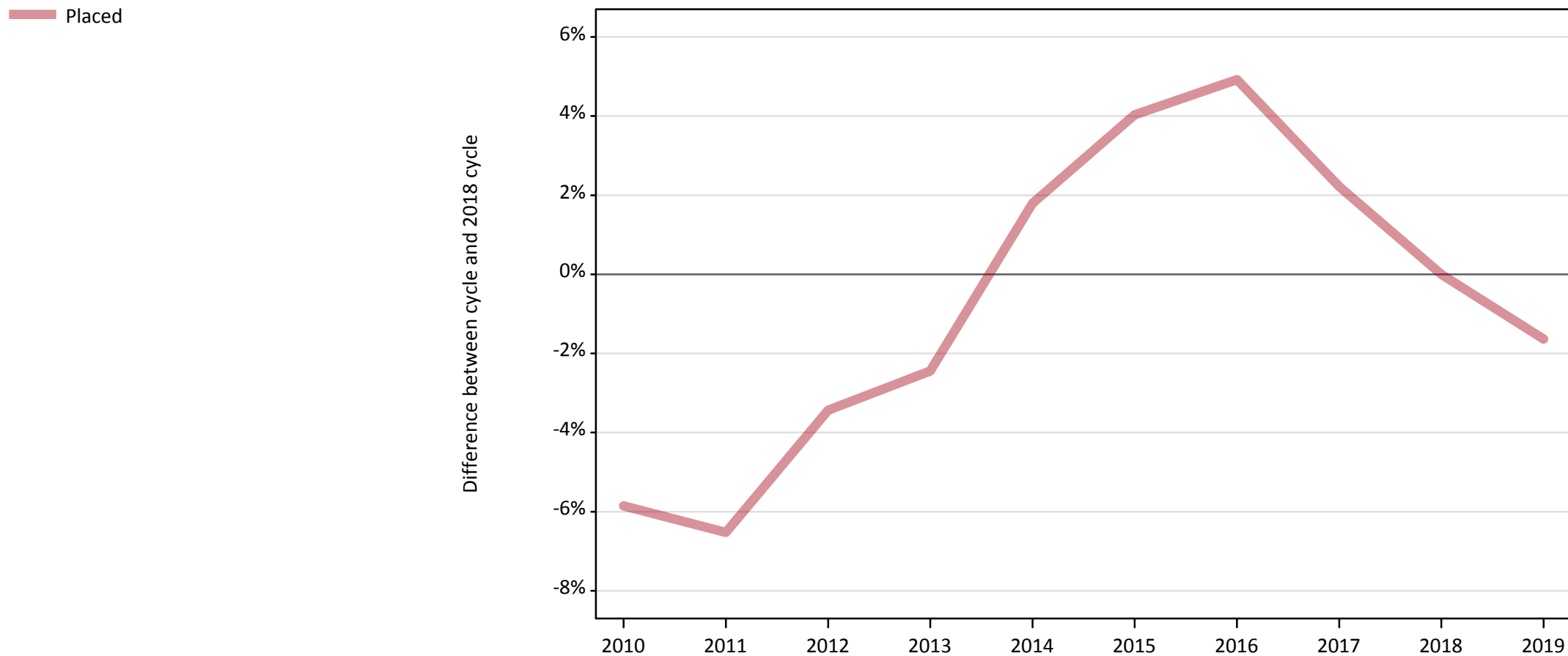
Applicant type	Status	2019
Main scheme	Placed (Clearing)	1,220
	Placed (Adjustment)	10
	Placed (Firm)	15,080
	Placed (Insurance)	800
	Placed (Other)	450
	Holding offer	750
	Free to be placed in Clearing	2,870
Direct to Clearing	Placed (Direct to Clearing)	550
	Other (Direct to Clearing)	270
All applicants	Placed	18,120

## A.2 Summary of applicants who are placed, holding offers or free to be placed in Clearing ( Wales )



### A.3 All placed applicants from Wales: 14 days after A level results day

All placed applicants: difference between cycle and 2018 cycle



Note: The percentage change is not plotted in the above chart for groups with fewer than 30 placed applicants in any one cycle.

#### A.4 All placed applicants from Wales: 14 days after A level results day

All placed applicants: applicants at 14 days after A level results day

Applicant type	Status	2010	2011	2012	2013	2014	2015	2016	2017	2018	2019
All applicants	Placed	17,340	17,220	17,790	17,970	18,750	19,160	19,320	18,830	18,420	18,120

#### A.5 All placed applicants from Wales: 14 days after A level results day

All placed applicants: difference between cycle and 2018 cycle

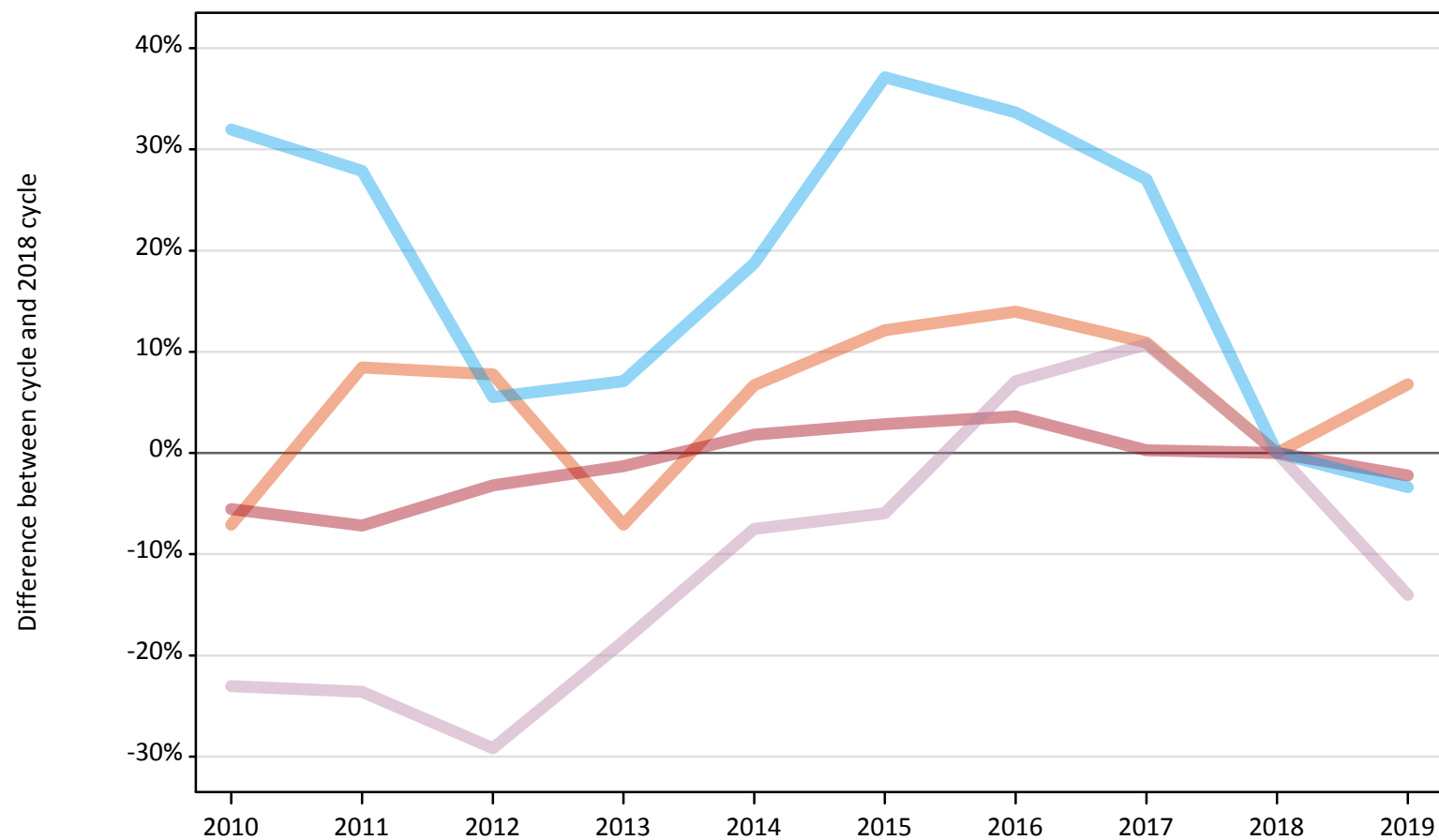
Applicant type	Status	2010	2011	2012	2013	2014	2015	2016	2017	2018	2019
All applicants	Placed	-6%	-7%	-3%	-2%	2%	4%	5%	2%	0%	-2%

Note: The percentage change is not recorded in the above table for groups with fewer than 10 placed applicants in that cycle or in the 2018 cycle.

## A.6 Placed main scheme applicants from Wales: 14 days after A level results day

All Main scheme placed routes (excluding Adjustment): difference between cycle and 2018 cycle

- Placed (Clearing)
- Placed (Firm)
- Placed (Insurance)
- Placed (Other)



Note: The percentage change is not plotted in the above chart for groups with fewer than 30 placed applicants in any one cycle.

### A.7 Placed main scheme applicants from Wales: 14 days after A level results day

All Main scheme placed routes (excluding Adjustment): applicants at 14 days after A level results day

Applicant type	Status	2010	2011	2012	2013	2014	2015	2016	2017	2018	2019
Main scheme	Placed (Clearing)	1,070	1,240	1,240	1,070	1,220	1,290	1,310	1,270	1,150	1,220
	Placed (Firm)	14,570	14,310	14,930	15,220	15,700	15,860	15,980	15,460	15,420	15,080
	Placed (Insurance)	1,100	1,060	880	890	990	1,140	1,110	1,060	830	800
	Placed (Other)	400	400	370	420	480	490	560	580	520	450

### A.8 Placed main scheme applicants from Wales: 14 days after A level results day

All Main scheme placed routes (excluding Adjustment): difference between cycle and 2018 cycle

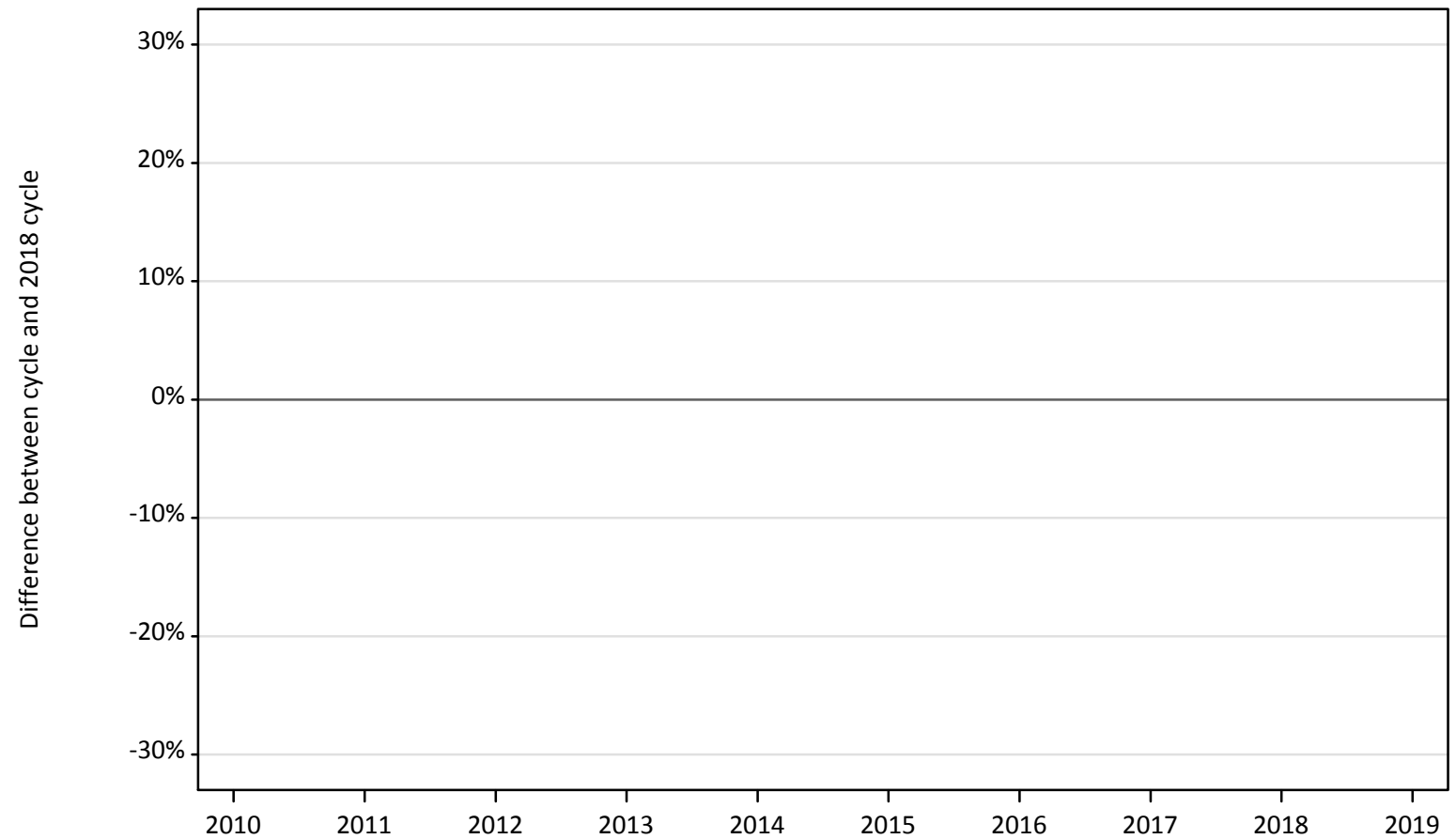
Applicant type	Status	2010	2011	2012	2013	2014	2015	2016	2017	2018	2019
Main scheme	Placed (Clearing)	-7%	8%	8%	-7%	7%	12%	14%	11%	0%	7%
	Placed (Firm)	-6%	-7%	-3%	-1%	2%	3%	4%	0%	0%	-2%
	Placed (Insurance)	32%	28%	6%	7%	19%	37%	34%	27%	0%	-3%
	Placed (Other)	-23%	-24%	-29%	-19%	-7%	-6%	7%	11%	0%	-14%

Note: The percentage change is not recorded in the above table for groups with fewer than 10 placed applicants in that cycle or in the 2018 cycle.

### A.9 Main scheme applicants placed through adjustment: 14 days after A level results day

Placed through adjustment: difference between cycle and 2018 cycle

Placed (Adjustment)



Note: The percentage change is not plotted in the above chart for groups with fewer than 30 placed applicants in any one cycle.

### A.10 Main scheme applicants placed through adjustment: 14 days after A level results day

Placed through adjustment: applicants at 14 days after A level results day

Applicant type	Status	2010	2011	2012	2013	2014	2015	2016	2017	2018	2019
Main scheme	Placed (Adjustment)	10	10	30	30	30	30	20	30	30	10

### A.11 Main scheme applicants placed through adjustment: 14 days after A level results day

Placed through adjustment: difference between cycle and 2018 cycle

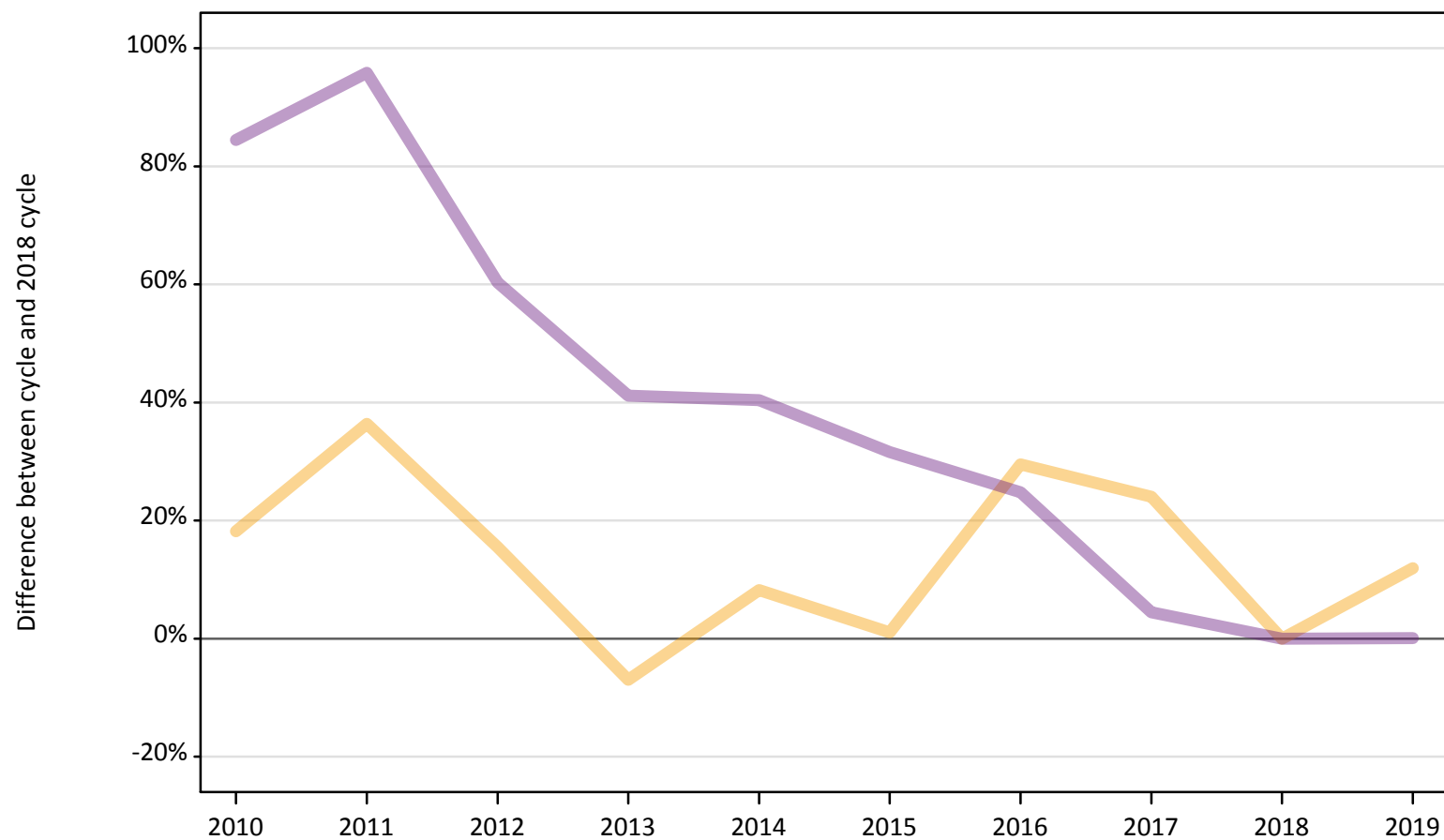
Applicant type	Status	2010	2011	2012	2013	2014	2015	2016	2017	2018	2019
Main scheme	Placed (Adjustment)	-61%	-70%	-12%	-21%	-3%	-18%	-42%	-3%	0%	-61%

Note: The percentage change is not recorded in the above table for groups with fewer than 10 placed applicants in that cycle or in the 2018 cycle.

## A.12 Main scheme applicants not currently placed from Wales: 14 days after A level results day

Applicants in unplaced states: difference between cycle and 2018 cycle

— Holding offer  
— Free to be placed in Clearing



Note: The percentage change is not plotted in the above chart for groups with fewer than 30 unplaced applicants in any one cycle.



**A.13 Main scheme applicants not currently placed from Wales: 14 days after A level results day**

Applicants in unplaced states: applicants at 14 days after A level results day

Applicant type	Status	2010	2011	2012	2013	2014	2015	2016	2017	2018	2019
Main scheme	Holding offer	790	920	780	620	730	680	870	830	670	750
	Free to be placed in Clearing	5,300	5,620	4,600	4,050	4,030	3,780	3,580	3,000	2,870	2,870

**A.14 Main scheme applicants not currently placed from Wales: 14 days after A level results day**

Applicants in unplaced states: difference between cycle and 2018 cycle

Applicant type	Status	2010	2011	2012	2013	2014	2015	2016	2017	2018	2019
Main scheme	Holding offer	18%	36%	15%	-7%	8%	1%	30%	24%	0%	12%
	Free to be placed in Clearing	84%	96%	60%	41%	40%	32%	25%	4%	0%	0%

Note: The percentage change is not recorded in the above table for groups with fewer than 10 unplaced applicants in that cycle or in the 2018 cycle.

### A.15 Direct to Clearing applicants from Wales: 14 days after A level results day

Direct to Clearing: difference between cycle and 2018 cycle



Note: The percentage change is not plotted in the above chart for groups with fewer than 30 placed applicants in any one cycle.

### A.16 Direct to Clearing applicants from Wales: 14 days after A level results day

Direct to Clearing 14 days after A level results day

Applicant type	Status	2010	2011	2012	2013	2014	2015	2016	2017	2018	2019
Direct to Clearing	Placed (Direct to Clearing)	200	190	350	340	320	360	350	430	470	550
	Other (Direct to Clearing)	230	230	210	230	250	280	250	320	280	270

### A.17 Direct to Clearing applicants from Wales: 14 days after A level results day

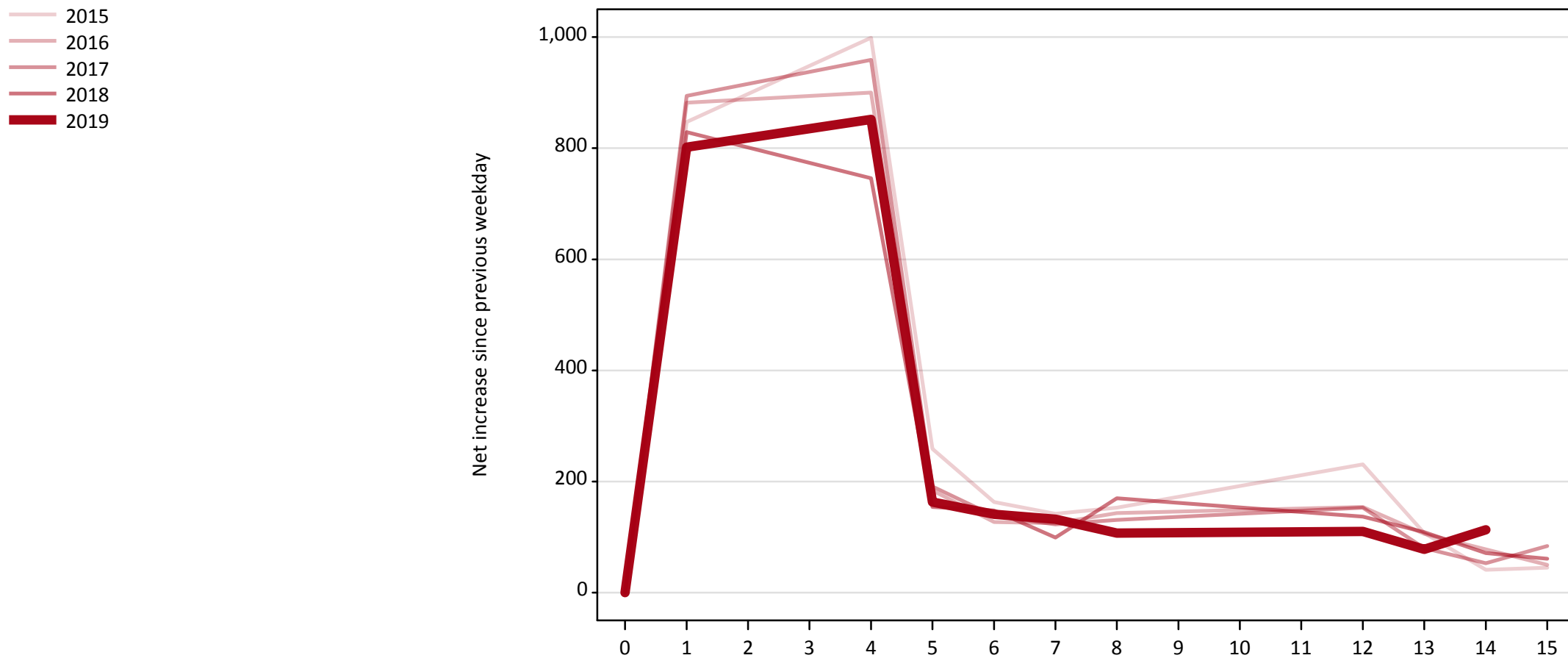
Direct to Clearing: difference between cycle and 2018 cycle

Applicant type	Status	2010	2011	2012	2013	2014	2015	2016	2017	2018	2019
Direct to Clearing	Placed (Direct to Clearing)	-58%	-60%	-25%	-26%	-31%	-24%	-25%	-8%	0%	17%
	Other (Direct to Clearing)	-18%	-19%	-26%	-18%	-10%	0%	-10%	15%	0%	-3%

Note: The percentage change is not recorded in the above table for groups with fewer than 10 placed applicants in that cycle or in the 2018 cycle.

### A.18 All Placed: Daily net change (from Wales)

Net increase since previous weekday (2019 cycle up to 14 days after A level results day)

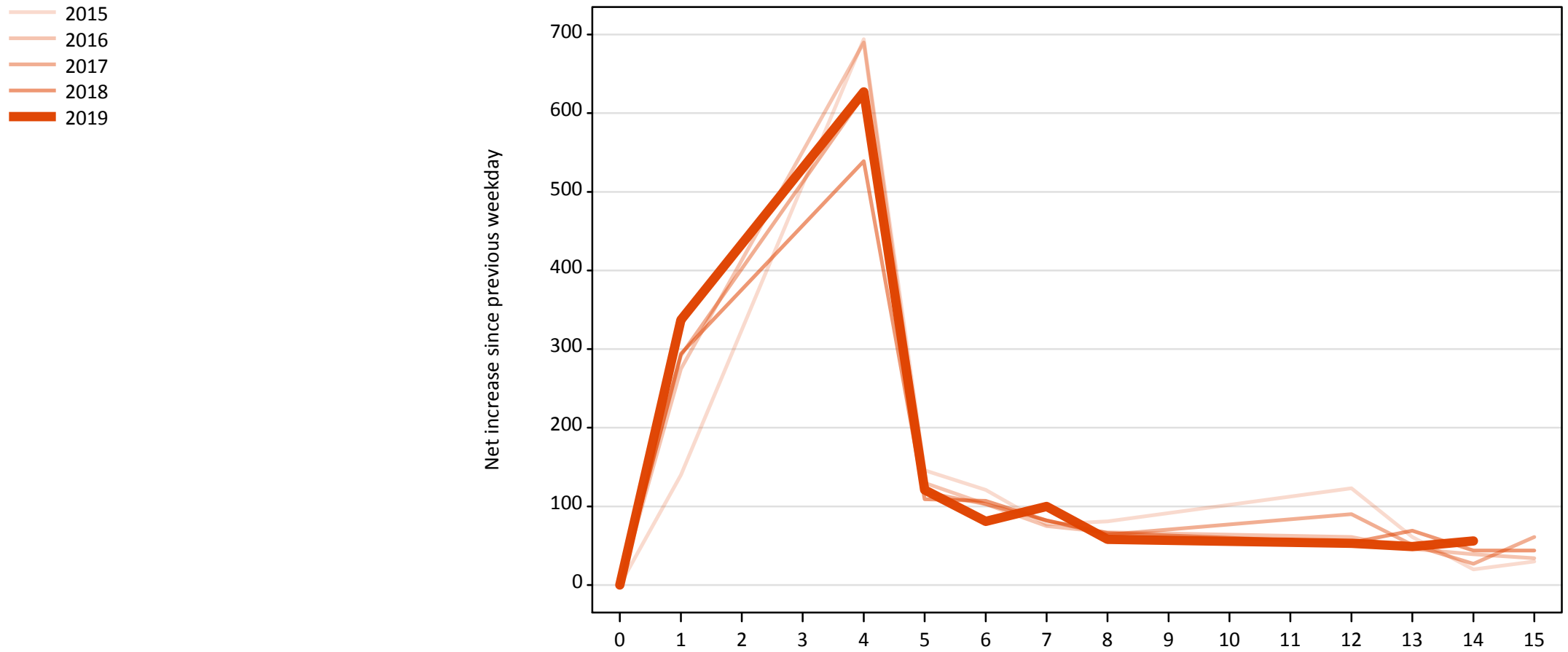


**A.19 All Placed: Daily net change (from Wales)**

Net increase since previous weekday (2019 cycle up to 14 days after A level results day)

Applicant status, days since A level results day		2015	2016	2017	2018	2019
All Placed	0	0	0	0	0	0
	1	850	880	890	830	800
	4	1,000	900	960	750	850
	5	260	180	190	150	160
	6	160	130	140	150	140
	7	140	130	120	100	130
	8	150	140	130	170	110
	12	230	150	150	140	110
	13	110	110	80	110	80
	14	40	80	50	70	110
	15	50	50	80	60	

**A.20 Placed through Clearing only: Daily net change (from Wales)**  
Net increase since previous weekday (2019 cycle up to 14 days after A level results day)



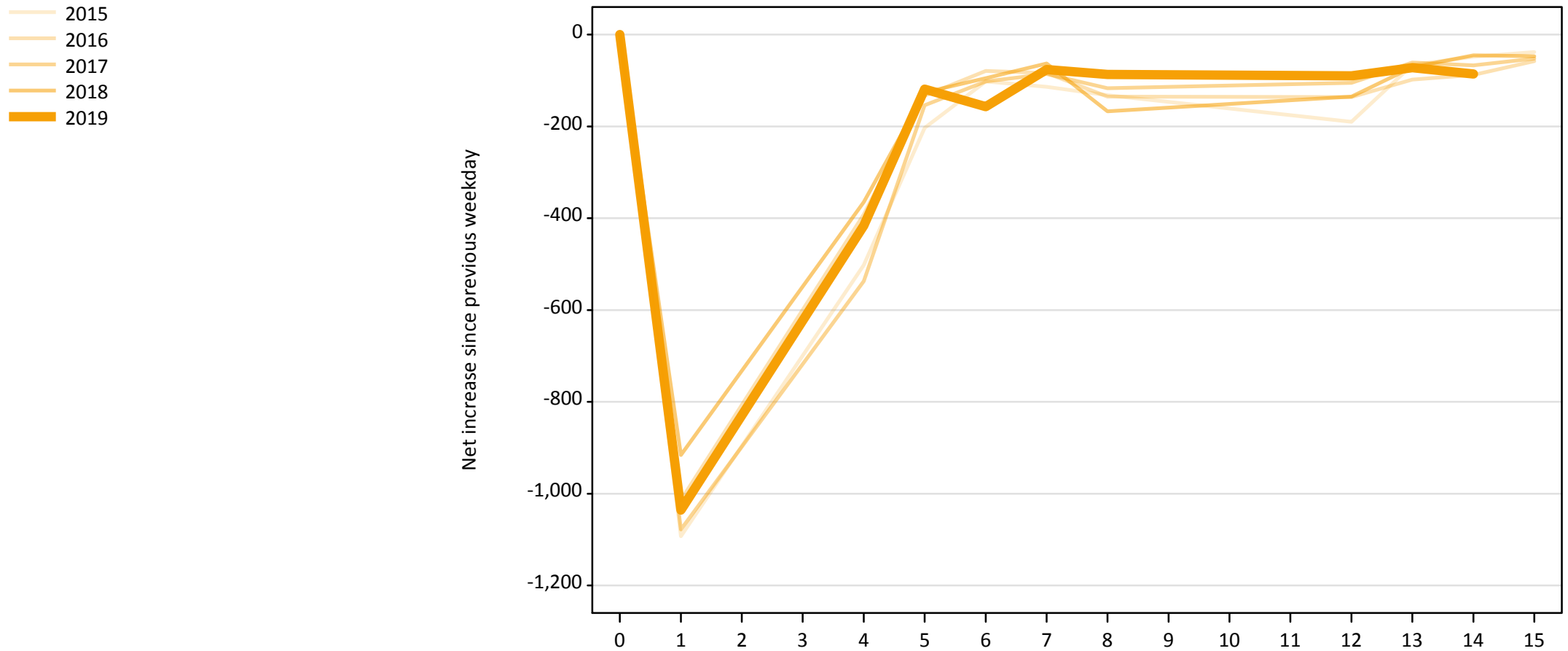
### A.21 Placed through Clearing only: Daily net change (from Wales)

Net increase since previous weekday (2019 cycle up to 14 days after A level results day)

Applicant status, days since A level results day		2015	2016	2017	2018	2019
Placed through Clearing only	0	0	0	0	0	0
	1	140	280	290	290	340
	4	690	690	620	540	630
	5	150	130	120	110	120
	6	120	100	100	110	80
	7	80	80	80	80	100
	8	80	70	60	70	60
	12	120	60	90	50	50
	13	60	50	50	70	50
	14	20	40	30	40	60
	15	30	30	60	40	

## A.22 Holding Offer: Daily net change (from Wales)

Net increase since previous weekday (2019 cycle up to 14 days after A level results day)





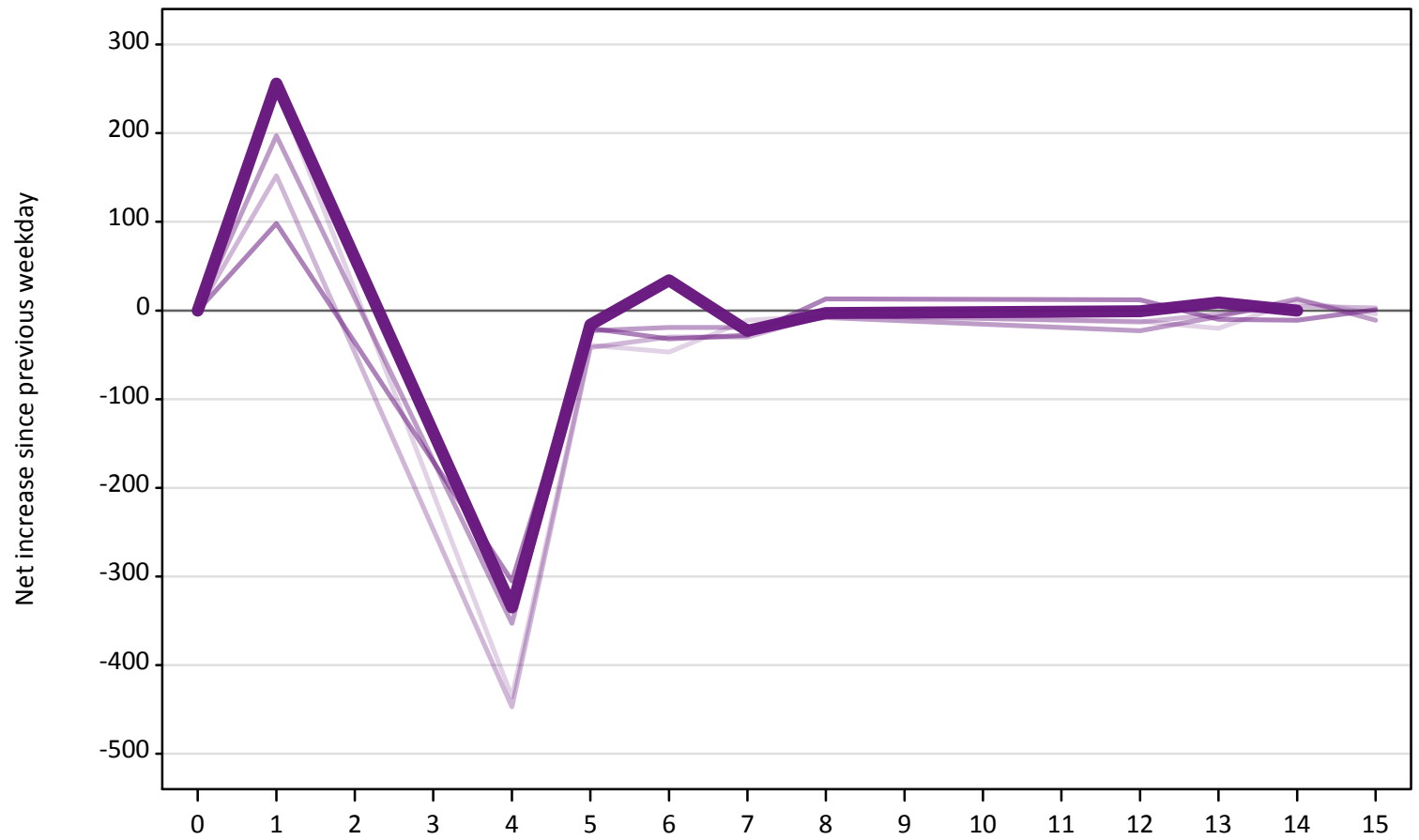
### A.23 Holding Offer: Daily net change (from Wales)

Net increase since previous weekday (2019 cycle up to 14 days after A level results day)

Applicant status, days since A level results day		2015	2016	2017	2018	2019
Holding Offer	0	0	0	0	0	0
	1	-1,090	-1,010	-1,080	-920	-1,040
	4	-500	-390	-540	-370	-420
	5	-200	-130	-150	-130	-120
	6	-100	-80	-100	-100	-160
	7	-110	-80	-90	-60	-80
	8	-130	-140	-120	-170	-90
	12	-190	-140	-110	-140	-90
	13	-70	-100	-60	-70	-70
	14	-50	-90	-70	-50	-90
	15	-40	-60	-50	-50	

**A.24 Free to be placed in Clearing: Daily net change (from Wales)**  
Net increase since previous weekday (2019 cycle up to 14 days after A level results day)

- 2015
- 2016
- 2017
- 2018
- 2019



**A.25 Free to be placed in Clearing: Daily net change (from Wales)**

Net increase since previous weekday (2019 cycle up to 14 days after A level results day)

Applicant status, days since A level results day		2015	2016	2017	2018	2019
Free to be placed in Clearing	0	0	0	0	0	0
	1	250	150	200	100	260
	4	-440	-450	-350	-310	-340
	5	-40	-40	-20	-20	-20
	6	-50	-30	-20	-30	30
	7	-10	-30	-20	-30	-20
	8	-10	-10	-10	10	0
	12	-10	-10	-20	10	0
	13	-20	0	-10	-10	10
	14	10	10	10	-10	0
	15	0	0	-10	0	