

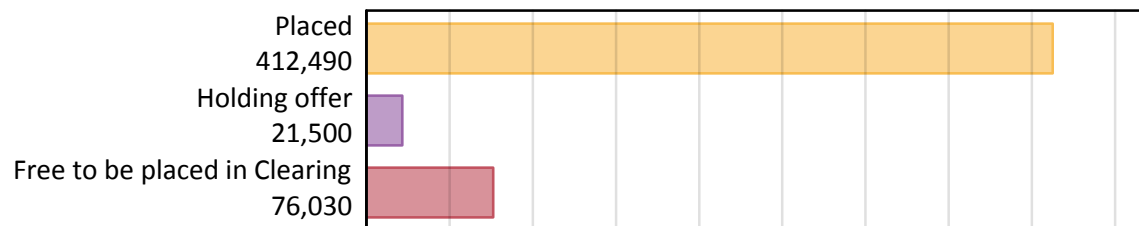
Daily Clearing Analysis: Overview

Analysis at 00:05 on Thursday 29 August 2019 (14 days after A level results day)

A.1 Applicants by type and status from the UK, 2019 cycle

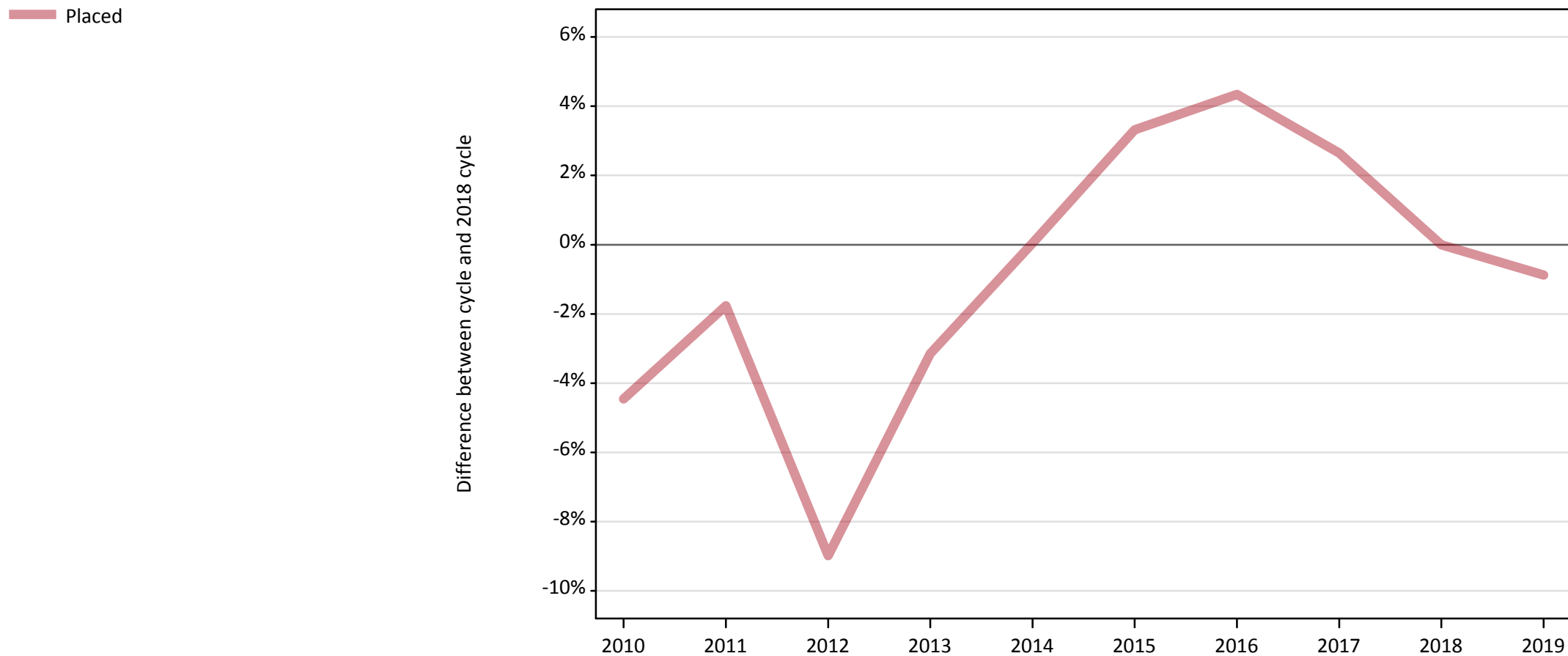
Applicant type	Status	2019
Main scheme	Placed (Clearing)	40,690
	Placed (Adjustment)	530
	Placed (Firm)	322,730
	Placed (Insurance)	27,740
	Placed (Other)	10,490
	Holding offer	21,500
	Free to be placed in Clearing	76,030
Direct to Clearing	Placed (Direct to Clearing)	10,320
	Other (Direct to Clearing)	7,300
All applicants	Placed	412,490

A.2 Summary of applicants who are placed, holding offers or free to be placed in Clearing (the UK)



A.3 All placed applicants from the UK: 14 days after A level results day

All placed applicants: difference between cycle and 2018 cycle



Note: The percentage change is not plotted in the above chart for groups with fewer than 30 placed applicants in any one cycle.

A.4 All placed applicants from the UK: 14 days after A level results day

All placed applicants: applicants at 14 days after A level results day

Applicant type	Status	2010	2011	2012	2013	2014	2015	2016	2017	2018	2019
All applicants	Placed	397,600	408,800	378,770	403,040	416,330	429,970	434,200	427,160	416,150	412,490

A.5 All placed applicants from the UK: 14 days after A level results day

All placed applicants: difference between cycle and 2018 cycle

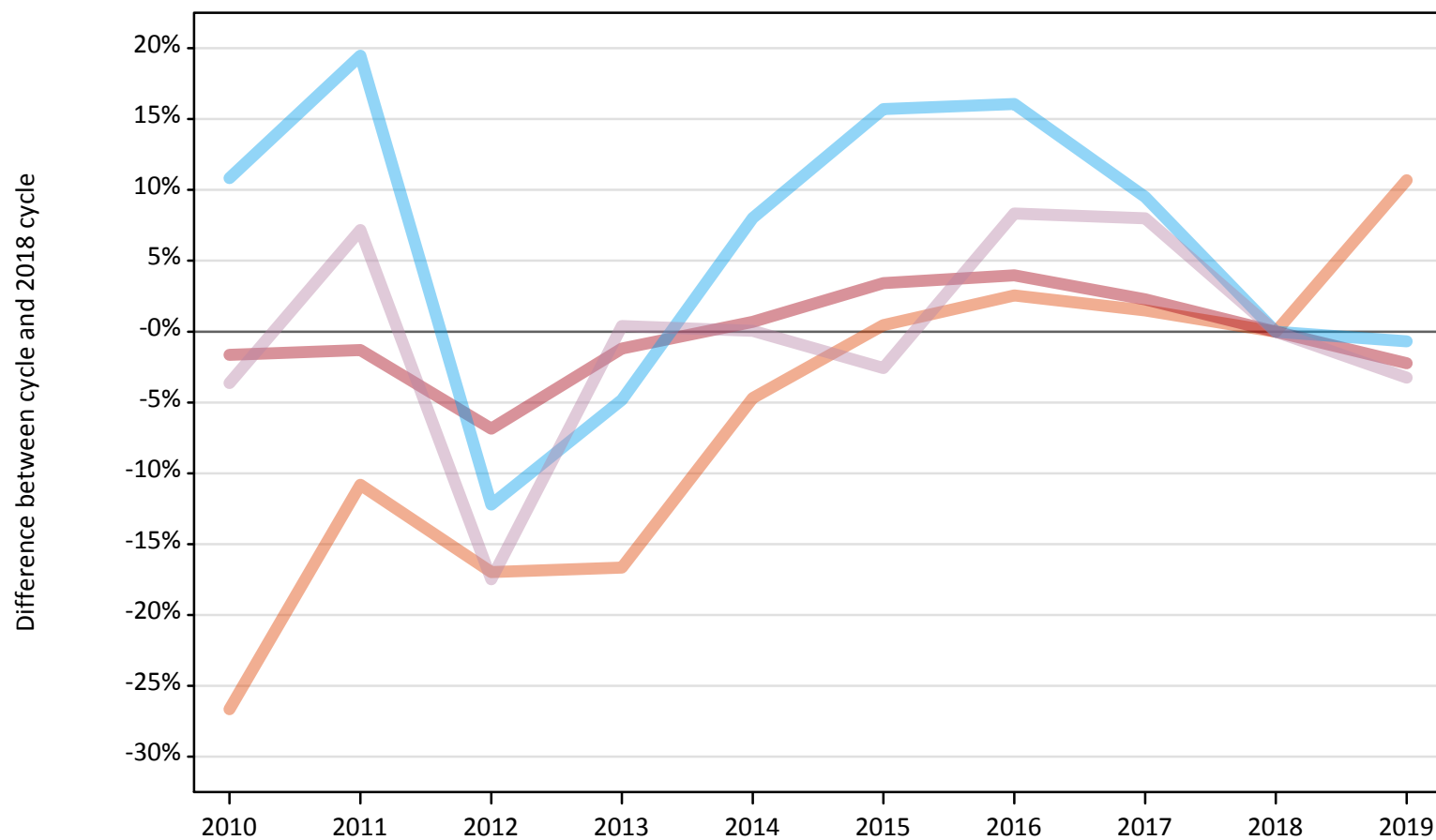
Applicant type	Status	2010	2011	2012	2013	2014	2015	2016	2017	2018	2019
All applicants	Placed	-4%	-2%	-9%	-3%	0%	3%	4%	3%	0%	-1%

Note: The percentage change is not recorded in the above table for groups with fewer than 10 placed applicants in that cycle or in the 2018 cycle.

A.6 Placed main scheme applicants from the UK: 14 days after A level results day

All Main scheme placed routes (excluding Adjustment): difference between cycle and 2018 cycle

- Placed (Clearing)
- Placed (Firm)
- Placed (Insurance)
- Placed (Other)



Note: The percentage change is not plotted in the above chart for groups with fewer than 30 placed applicants in any one cycle.

A.7 Placed main scheme applicants from the UK: 14 days after A level results day

All Main scheme placed routes (excluding Adjustment): applicants at 14 days after A level results day

Applicant type	Status	2010	2011	2012	2013	2014	2015	2016	2017	2018	2019
Main scheme	Placed (Clearing)	26,970	32,790	30,530	30,640	35,040	36,930	37,710	37,310	36,760	40,690
	Placed (Firm)	324,710	325,800	307,490	326,130	332,380	341,380	343,190	337,660	330,110	322,730
	Placed (Insurance)	30,950	33,370	24,520	26,590	30,170	32,320	32,420	30,580	27,930	27,740
	Placed (Other)	10,440	11,610	8,940	10,880	10,840	10,560	11,740	11,700	10,840	10,490

A.8 Placed main scheme applicants from the UK: 14 days after A level results day

All Main scheme placed routes (excluding Adjustment): difference between cycle and 2018 cycle

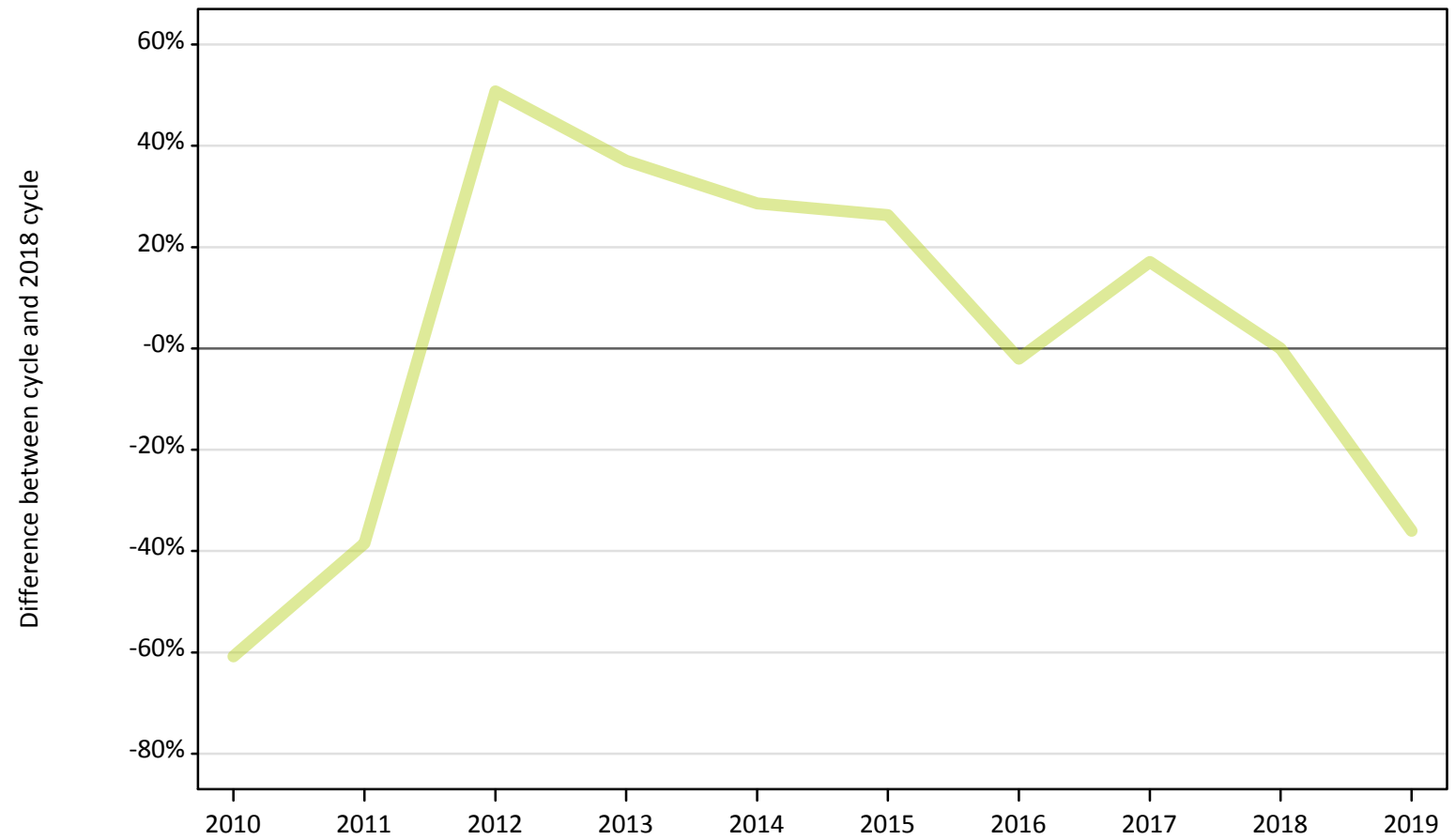
Applicant type	Status	2010	2011	2012	2013	2014	2015	2016	2017	2018	2019
Main scheme	Placed (Clearing)	-27%	-11%	-17%	-17%	-5%	0%	3%	1%	0%	11%
	Placed (Firm)	-2%	-1%	-7%	-1%	1%	3%	4%	2%	0%	-2%
	Placed (Insurance)	11%	19%	-12%	-5%	8%	16%	16%	9%	0%	-1%
	Placed (Other)	-4%	7%	-17%	0%	0%	-3%	8%	8%	0%	-3%

Note: The percentage change is not recorded in the above table for groups with fewer than 10 placed applicants in that cycle or in the 2018 cycle.

A.9 Main scheme applicants placed through adjustment: 14 days after A level results day

Placed through adjustment: difference between cycle and 2018 cycle

Placed (Adjustment)



Note: The percentage change is not plotted in the above chart for groups with fewer than 30 placed applicants in any one cycle.

A.10 Main scheme applicants placed through adjustment: 14 days after A level results day

Placed through adjustment: applicants at 14 days after A level results day

Applicant type	Status	2010	2011	2012	2013	2014	2015	2016	2017	2018	2019
Main scheme	Placed (Adjustment)	330	510	1,250	1,140	1,070	1,050	810	970	830	530

A.11 Main scheme applicants placed through adjustment: 14 days after A level results day

Placed through adjustment: difference between cycle and 2018 cycle

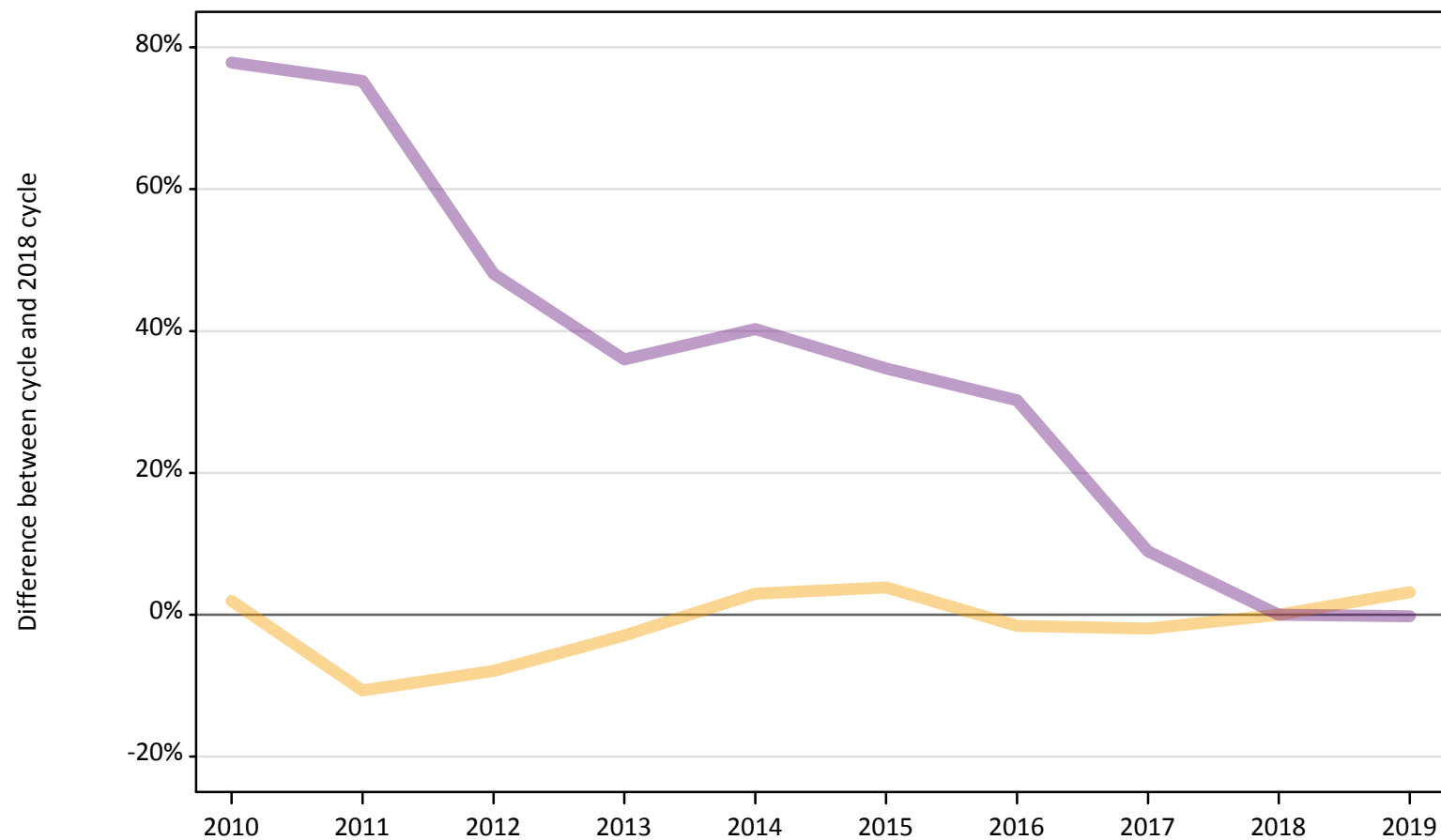
Applicant type	Status	2010	2011	2012	2013	2014	2015	2016	2017	2018	2019
Main scheme	Placed (Adjustment)	-61%	-39%	51%	37%	29%	26%	-2%	17%	0%	-36%

Note: The percentage change is not recorded in the above table for groups with fewer than 10 placed applicants in that cycle or in the 2018 cycle.

A.12 Main scheme applicants not currently placed from the UK: 14 days after A level results day

Applicants in unplaced states: difference between cycle and 2018 cycle

— Holding offer
— Free to be placed in Clearing



Note: The percentage change is not plotted in the above chart for groups with fewer than 30 unplaced applicants in any one cycle.

A.13 Main scheme applicants not currently placed from the UK: 14 days after A level results day

Applicants in unplaced states: applicants at 14 days after A level results day

Applicant type	Status	2010	2011	2012	2013	2014	2015	2016	2017	2018	2019
Main scheme	Holding offer	21,250	18,620	19,190	20,230	21,460	21,640	20,510	20,430	20,840	21,500
	Free to be placed in Clearing	135,510	133,540	112,820	103,630	106,890	102,640	99,230	82,990	76,190	76,030

A.14 Main scheme applicants not currently placed from the UK: 14 days after A level results day

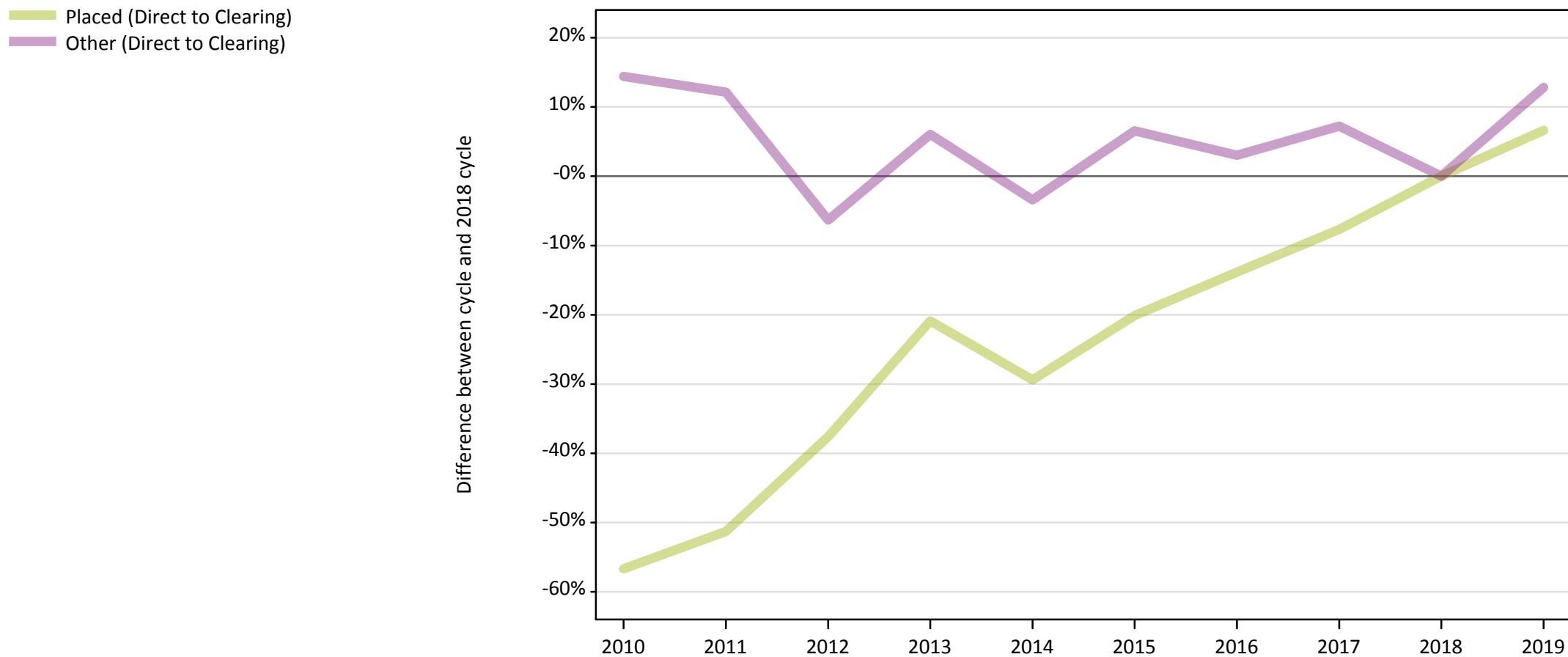
Applicants in unplaced states: difference between cycle and 2018 cycle

Applicant type	Status	2010	2011	2012	2013	2014	2015	2016	2017	2018	2019
Main scheme	Holding offer	2%	-11%	-8%	-3%	3%	4%	-2%	-2%	0%	3%
	Free to be placed in Clearing	78%	75%	48%	36%	40%	35%	30%	9%	0%	-0%

Note: The percentage change is not recorded in the above table for groups with fewer than 10 unplaced applicants in that cycle or in the 2018 cycle.

A.15 Direct to Clearing applicants from the UK: 14 days after A level results day

Direct to Clearing: difference between cycle and 2018 cycle



Note: The percentage change is not plotted in the above chart for groups with fewer than 30 placed applicants in any one cycle.

A.16 Direct to Clearing applicants from the UK: 14 days after A level results day

Direct to Clearing 14 days after A level results day

Applicant type	Status	2010	2011	2012	2013	2014	2015	2016	2017	2018	2019
Direct to Clearing	Placed (Direct to Clearing)	4,190	4,710	6,040	7,660	6,830	7,730	8,340	8,940	9,680	10,320
	Other (Direct to Clearing)	7,400	7,260	6,060	6,860	6,250	6,900	6,670	6,940	6,470	7,300

A.17 Direct to Clearing applicants from the UK: 14 days after A level results day

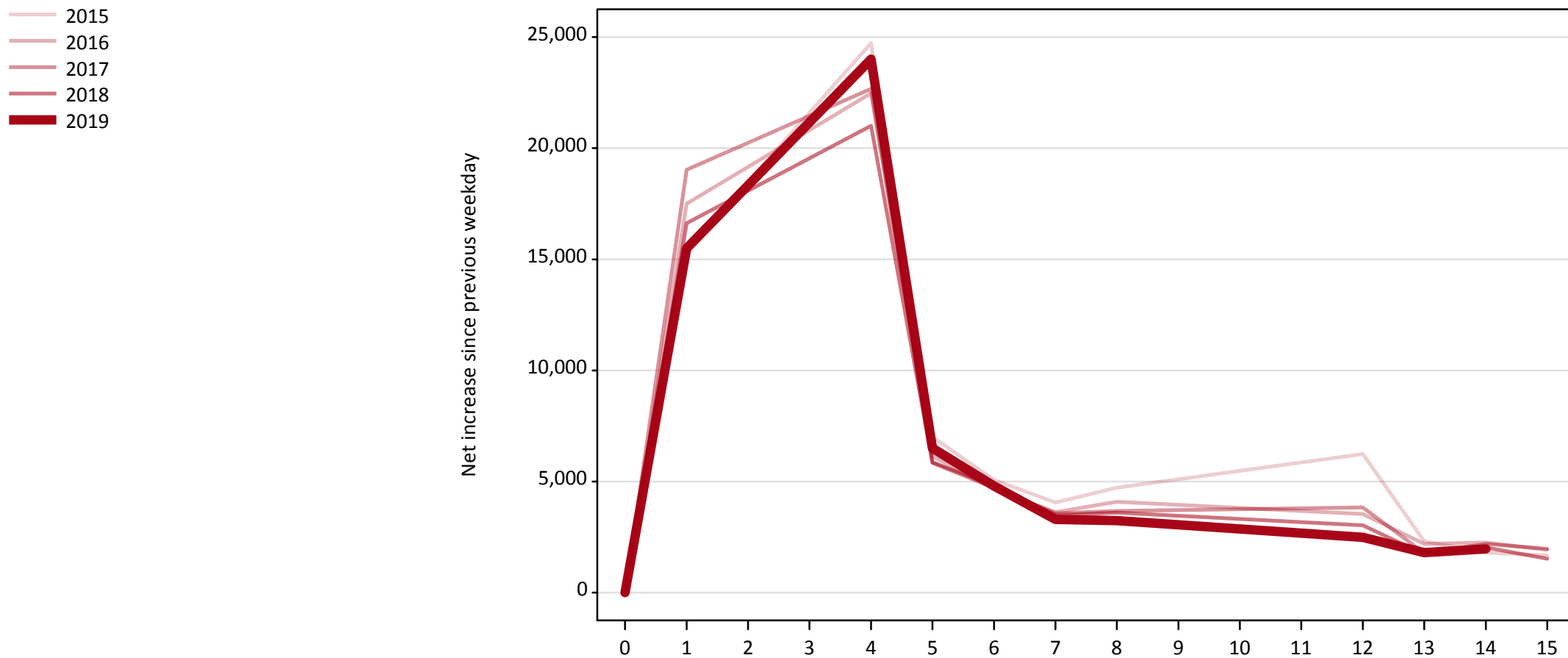
Direct to Clearing: difference between cycle and 2018 cycle

Applicant type	Status	2010	2011	2012	2013	2014	2015	2016	2017	2018	2019
Direct to Clearing	Placed (Direct to Clearing)	-57%	-51%	-38%	-21%	-29%	-20%	-14%	-8%	0%	7%
	Other (Direct to Clearing)	14%	12%	-6%	6%	-3%	7%	3%	7%	0%	13%

Note: The percentage change is not recorded in the above table for groups with fewer than 10 placed applicants in that cycle or in the 2018 cycle.

A.18 All Placed: Daily net change (from the UK)

Net increase since previous weekday (2019 cycle up to 14 days after A level results day)

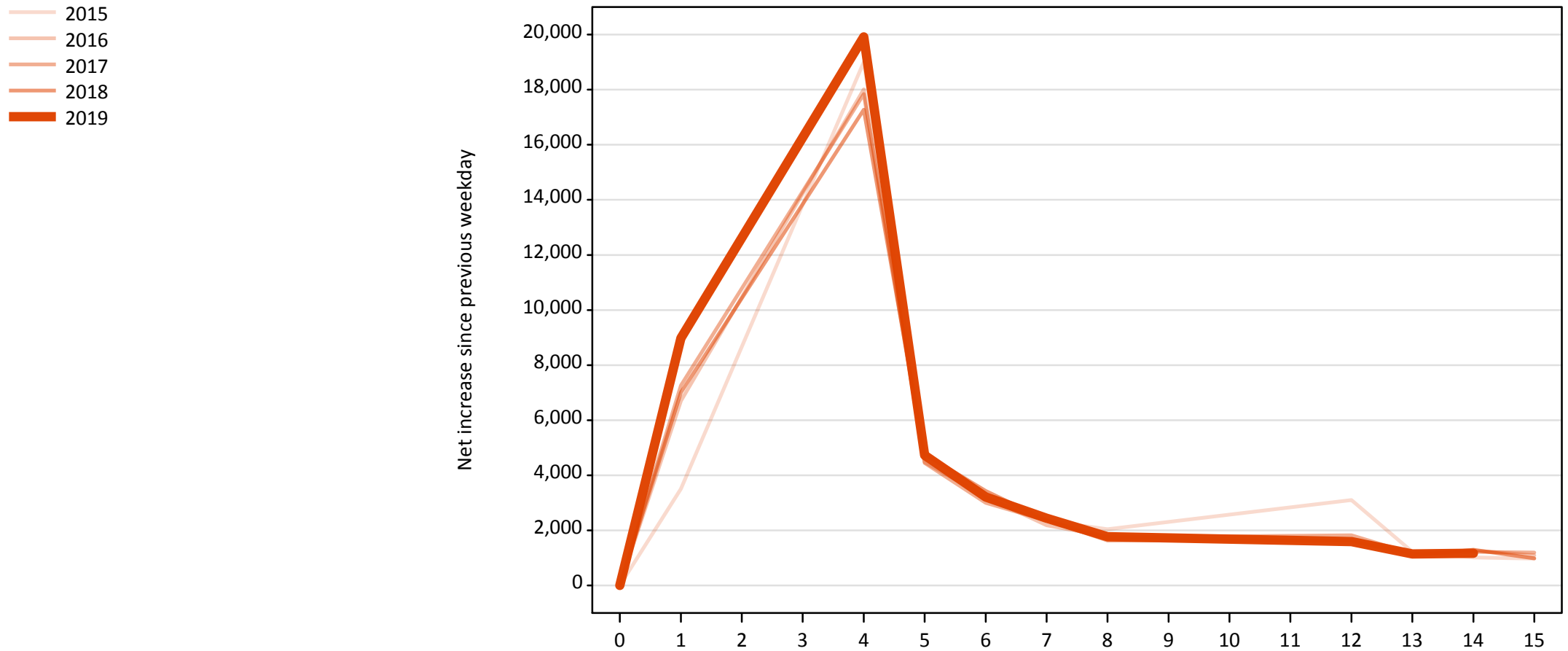


A.19 All Placed: Daily net change (from the UK)

Net increase since previous weekday (2019 cycle up to 14 days after A level results day)

Applicant status, days since A level results day		2015	2016	2017	2018	2019
All Placed	0	0	0	0	0	0
	1	15,350	17,510	19,030	16,620	15,490
	4	24,730	22,470	22,670	21,010	24,010
	5	7,020	6,140	5,840	5,870	6,510
	6	5,070	4,660	4,710	4,810	4,800
	7	4,060	3,630	3,570	3,500	3,300
	8	4,720	4,090	3,670	3,600	3,240
	12	6,240	3,530	3,840	3,020	2,490
	13	2,310	2,200	1,780	1,720	1,800
	14	1,810	2,260	2,200	2,030	1,970
	15	1,680	1,920	1,970	1,530	

A.20 Placed through Clearing only: Daily net change (from the UK)
Net increase since previous weekday (2019 cycle up to 14 days after A level results day)

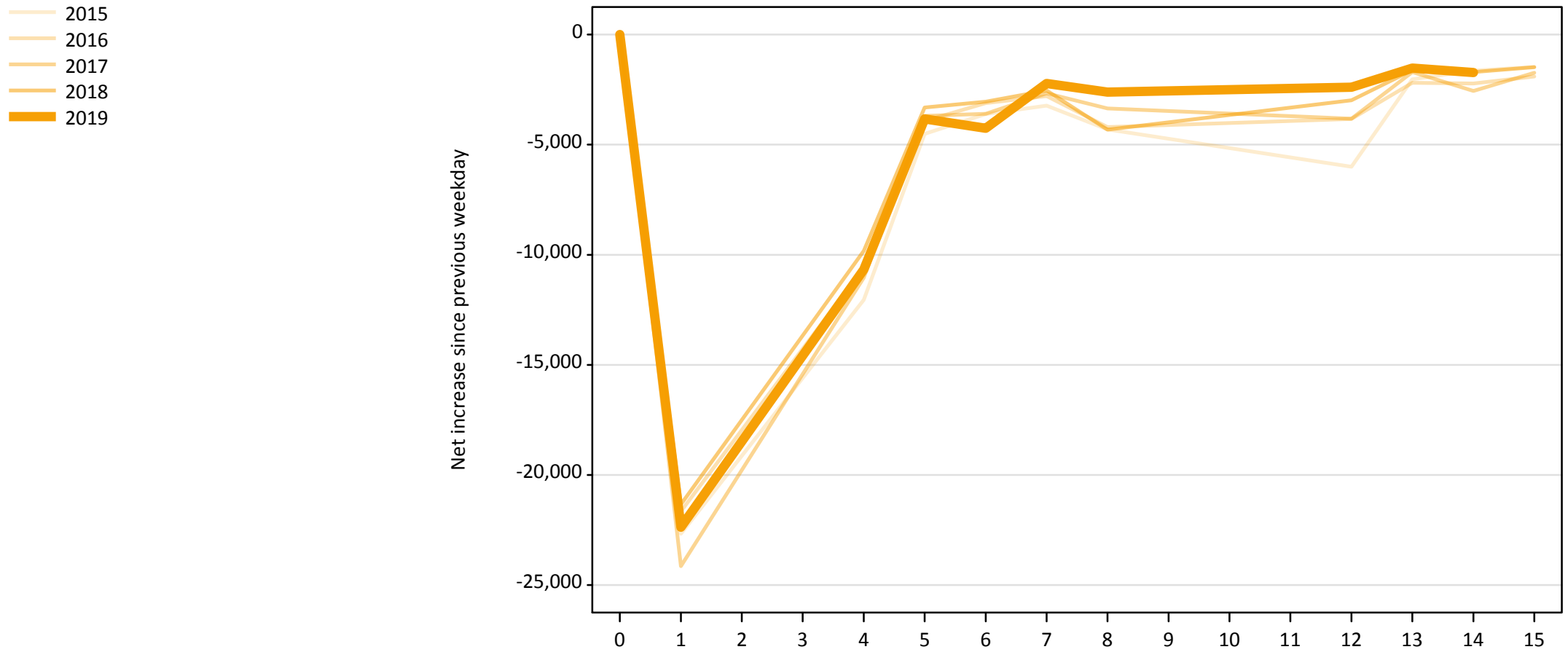


A.21 Placed through Clearing only: Daily net change (from the UK)

Net increase since previous weekday (2019 cycle up to 14 days after A level results day)

Applicant status, days since A level results day		2015	2016	2017	2018	2019
Placed through Clearing only	0	0	0	0	0	0
	1	3,510	6,700	7,260	7,010	8,980
	4	19,000	18,010	17,840	17,270	19,910
	5	4,820	4,470	4,450	4,770	4,730
	6	3,170	3,220	3,000	3,430	3,210
	7	2,350	2,180	2,360	2,370	2,440
	8	2,040	1,780	1,740	1,640	1,770
	12	3,100	1,570	1,820	1,640	1,600
	13	1,220	1,210	1,150	1,080	1,140
	14	1,020	1,270	1,220	1,300	1,170
	15	980	1,090	1,200	980	

A.22 Holding Offer: Daily net change (from the UK)
Net increase since previous weekday (2019 cycle up to 14 days after A level results day)

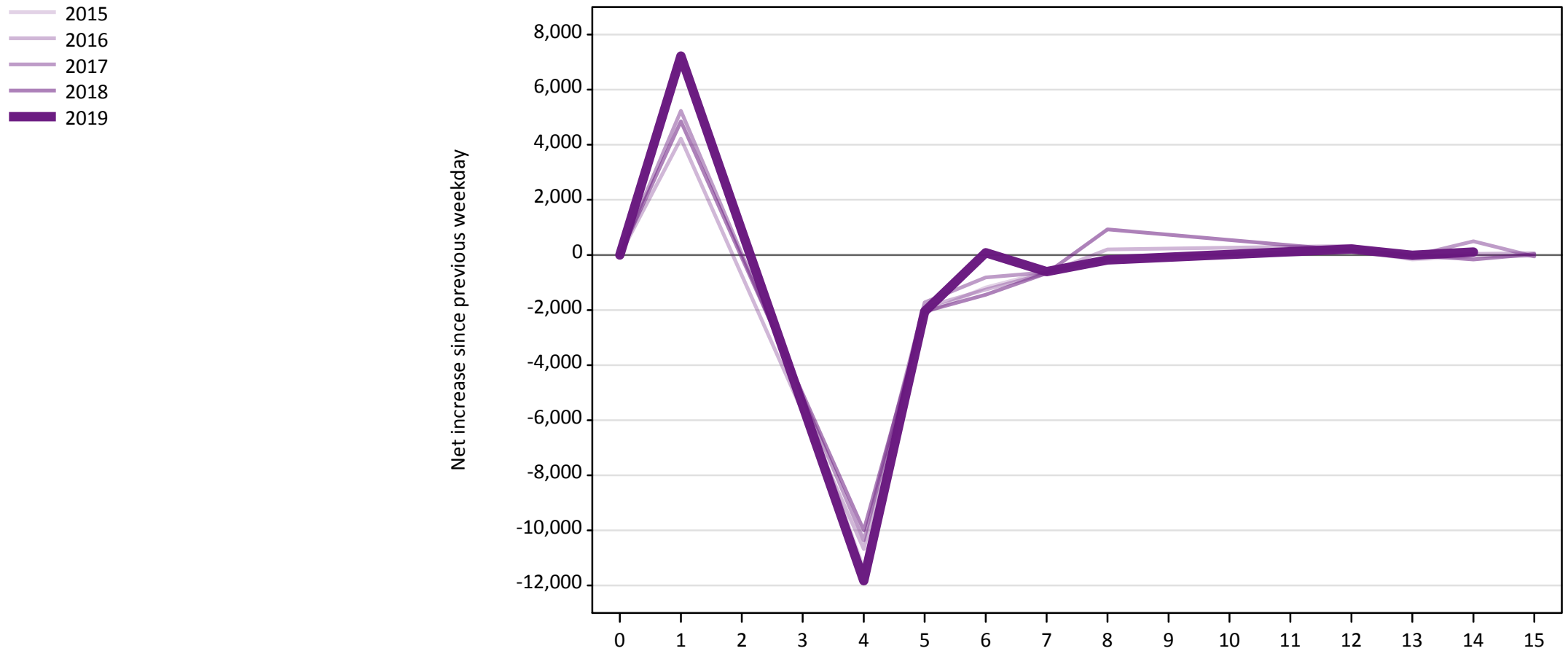


A.23 Holding Offer: Daily net change (from the UK)

Net increase since previous weekday (2019 cycle up to 14 days after A level results day)

Applicant status, days since A level results day	2015	2016	2017	2018	2019	
Holding Offer	0	0	0	0	0	
	1	-22,670	-21,650	-24,140	-21,330	-22,370
	4	-12,050	-10,570	-11,040	-9,830	-10,670
	5	-4,510	-3,920	-3,690	-3,320	-3,840
	6	-3,610	-3,110	-3,600	-3,040	-4,250
	7	-3,230	-2,790	-2,670	-2,540	-2,220
	8	-4,310	-4,200	-3,360	-4,320	-2,620
	12	-6,000	-3,830	-3,830	-2,980	-2,390
	13	-2,030	-2,190	-1,700	-1,620	-1,520
	14	-1,640	-2,220	-2,560	-1,700	-1,720
	15	-1,470	-1,900	-1,740	-1,480	

A.24 Free to be placed in Clearing: Daily net change (from the UK)
Net increase since previous weekday (2019 cycle up to 14 days after A level results day)



A.25 Free to be placed in Clearing: Daily net change (from the UK)

Net increase since previous weekday (2019 cycle up to 14 days after A level results day)

Applicant status, days since A level results day		2015	2016	2017	2018	2019
Free to be placed in Clearing	0	0	0	0	0	0
	1	7,260	4,220	5,230	4,850	7,220
	4	-11,400	-10,680	-10,370	-10,000	-11,830
	5	-2,100	-1,900	-1,730	-2,050	-2,060
	6	-1,180	-1,260	-820	-1,450	80
	7	-610	-660	-630	-660	-610
	8	-150	200	-130	920	-180
	12	150	320	190	160	220
	13	-170	-50	-40	0	-10
	14	-50	40	500	-160	100
	15	-40	60	-50	30	