

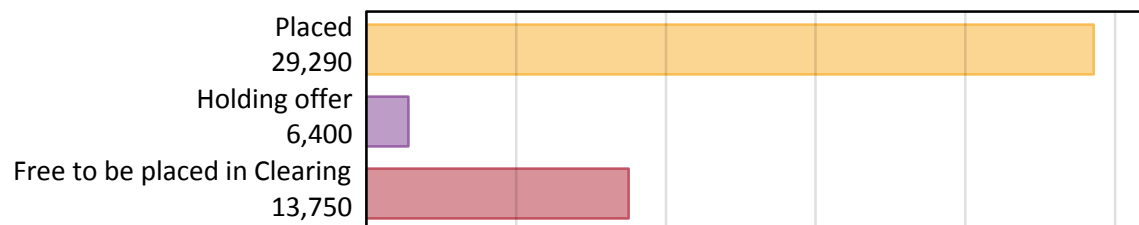
Daily Clearing Analysis: Overview

Analysis at 00:05 on Thursday 29 August 2019 (14 days after A level results day)

A.1 Applicants by type and status from the EU - excluding UK, 2019 cycle

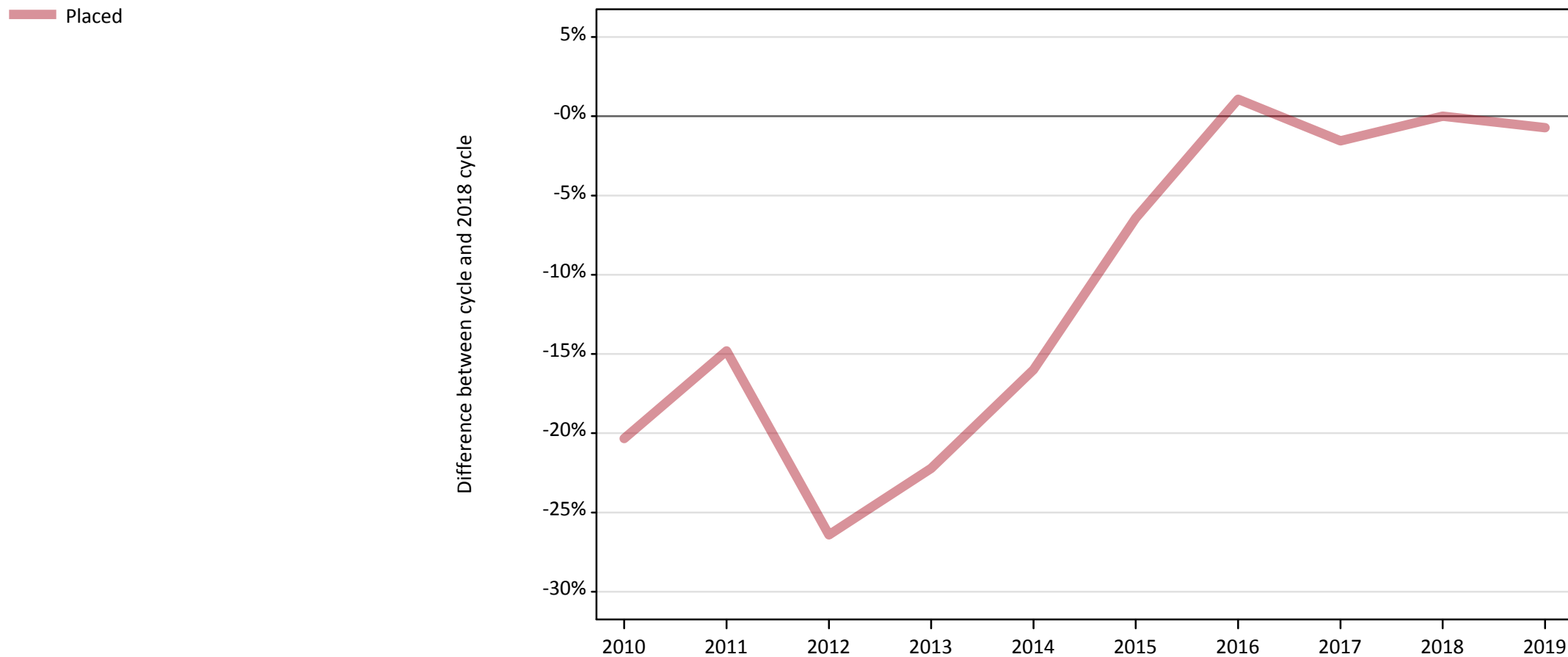
Applicant type	Status	2019
Main scheme	Placed (Clearing)	1,470
	Placed (Adjustment)	20
	Placed (Firm)	23,920
	Placed (Insurance)	2,150
	Placed (Other)	1,290
	Holding offer	6,400
	Free to be placed in Clearing	13,750
Direct to Clearing	Placed (Direct to Clearing)	450
	Other (Direct to Clearing)	380
All applicants	Placed	29,290

A.2 Summary of applicants who are placed, holding offers or free to be placed in Clearing (the EU - excluding UK)



A.3 All placed applicants from the EU - excluding UK: 14 days after A level results day

All placed applicants: difference between cycle and 2018 cycle



Note: The percentage change is not plotted in the above chart for groups with fewer than 30 placed applicants in any one cycle.

A.4 All placed applicants from the EU - excluding UK: 14 days after A level results day

All placed applicants: applicants at 14 days after A level results day

Applicant type	Status	2010	2011	2012	2013	2014	2015	2016	2017	2018	2019
All applicants	Placed	23,500	25,130	21,710	22,940	24,780	27,610	29,820	29,040	29,500	29,290

A.5 All placed applicants from the EU - excluding UK: 14 days after A level results day

All placed applicants: difference between cycle and 2018 cycle

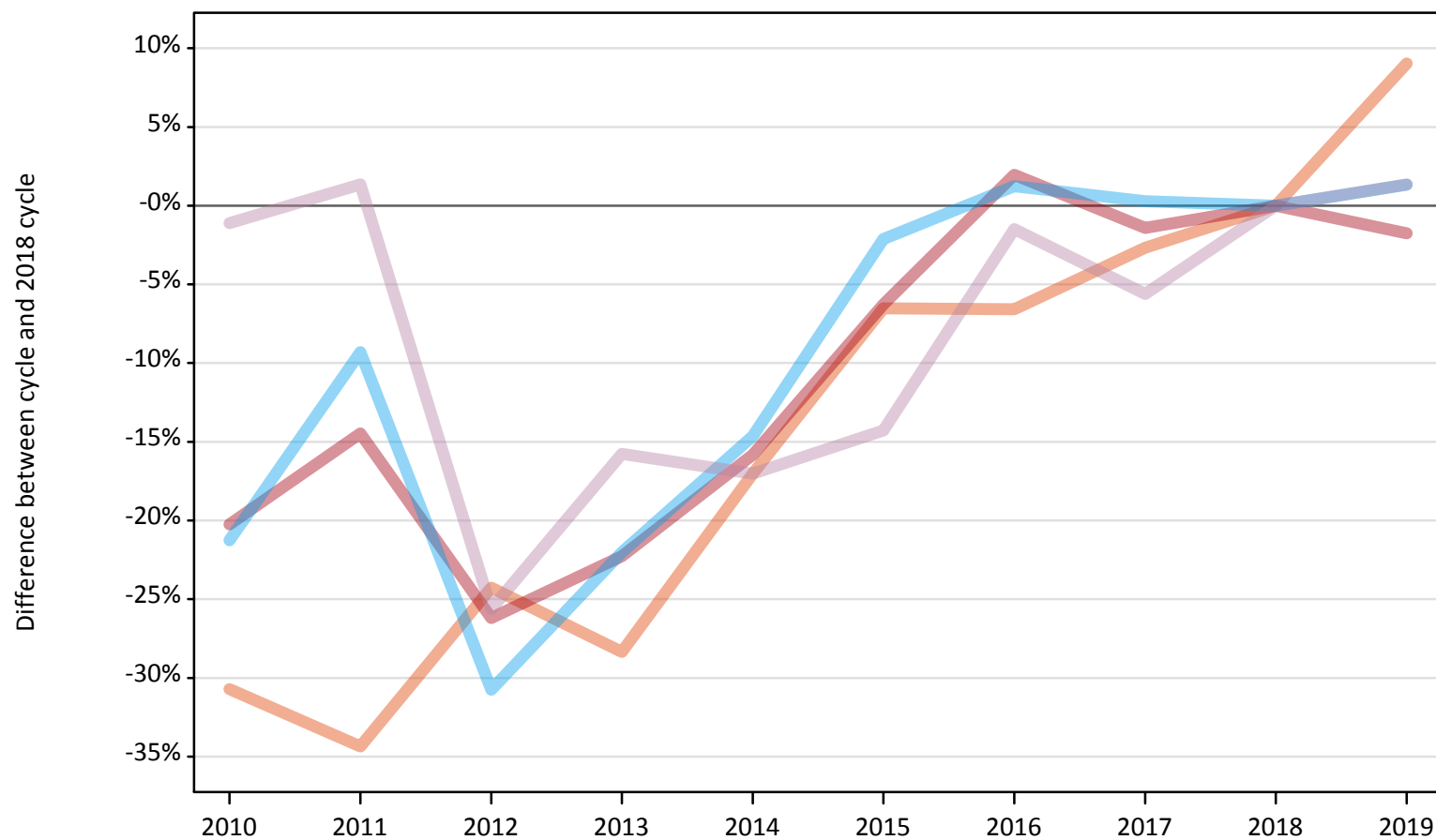
Applicant type	Status	2010	2011	2012	2013	2014	2015	2016	2017	2018	2019
All applicants	Placed	-20%	-15%	-26%	-22%	-16%	-6%	1%	-2%	0%	-1%

Note: The percentage change is not recorded in the above table for groups with fewer than 10 placed applicants in that cycle or in the 2018 cycle.

A.6 Placed main scheme applicants from the EU - excluding UK: 14 days after A level results day

All Main scheme placed routes (excluding Adjustment): difference between cycle and 2018 cycle

- Placed (Clearing)
- Placed (Firm)
- Placed (Insurance)
- Placed (Other)



Note: The percentage change is not plotted in the above chart for groups with fewer than 30 placed applicants in any one cycle.

A.7 Placed main scheme applicants from the EU - excluding UK: 14 days after A level results day

All Main scheme placed routes (excluding Adjustment): applicants at 14 days after A level results day

Applicant type	Status	2010	2011	2012	2013	2014	2015	2016	2017	2018	2019
Main scheme	Placed (Clearing)	940	890	1,020	970	1,120	1,260	1,260	1,320	1,350	1,470
	Placed (Firm)	19,420	20,820	17,970	18,930	20,490	22,820	24,820	24,000	24,350	23,920
	Placed (Insurance)	1,670	1,920	1,470	1,650	1,810	2,070	2,140	2,120	2,120	2,150
	Placed (Other)	1,250	1,290	940	1,070	1,050	1,090	1,250	1,200	1,270	1,290

A.8 Placed main scheme applicants from the EU - excluding UK: 14 days after A level results day

All Main scheme placed routes (excluding Adjustment): difference between cycle and 2018 cycle

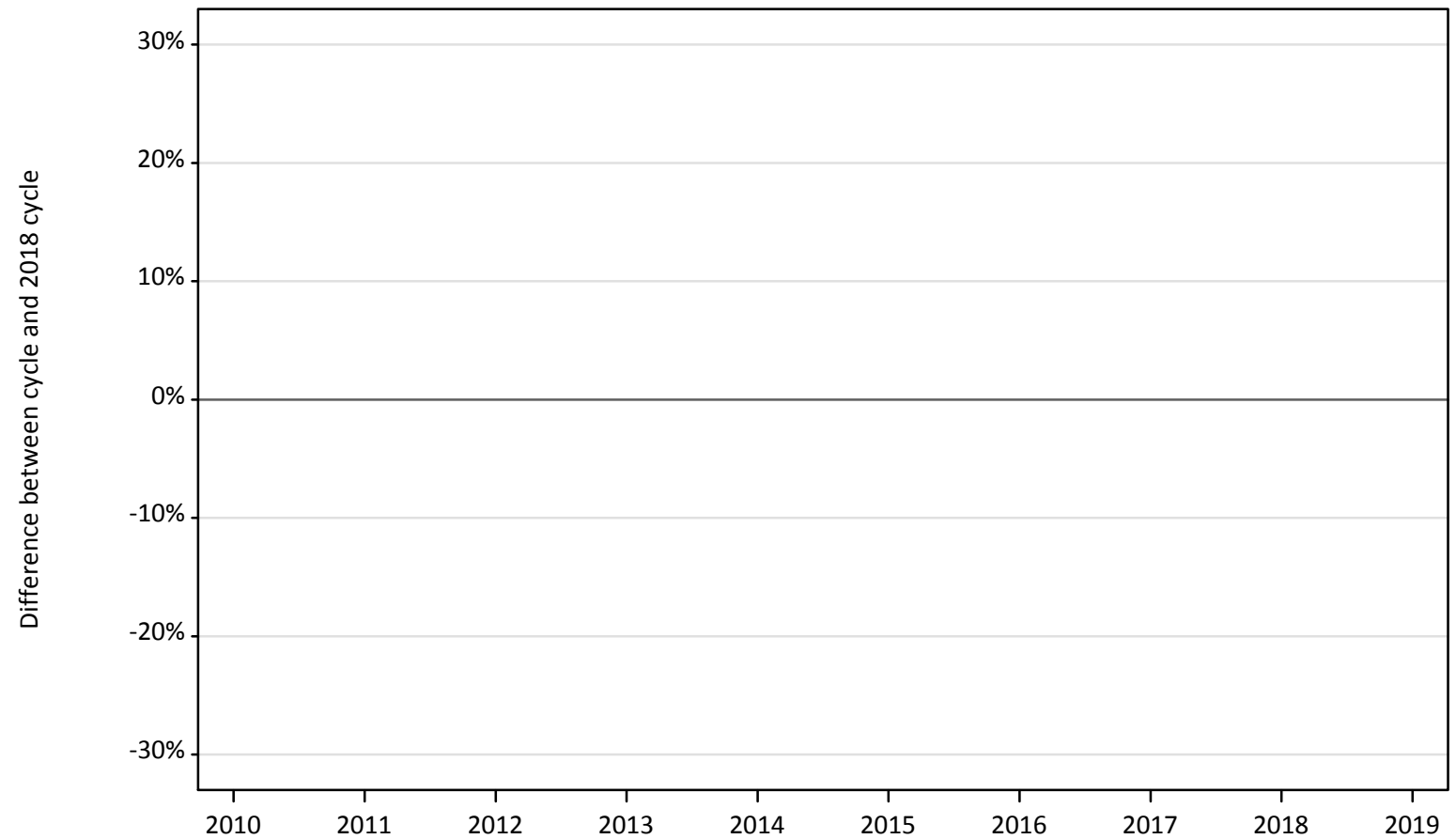
Applicant type	Status	2010	2011	2012	2013	2014	2015	2016	2017	2018	2019
Main scheme	Placed (Clearing)	-31%	-34%	-24%	-28%	-17%	-7%	-7%	-3%	0%	9%
	Placed (Firm)	-20%	-14%	-26%	-22%	-16%	-6%	2%	-1%	0%	-2%
	Placed (Insurance)	-21%	-9%	-31%	-22%	-15%	-2%	1%	0%	0%	1%
	Placed (Other)	-1%	1%	-26%	-16%	-17%	-14%	-1%	-6%	0%	1%

Note: The percentage change is not recorded in the above table for groups with fewer than 10 placed applicants in that cycle or in the 2018 cycle.

A.9 Main scheme applicants placed through adjustment: 14 days after A level results day

Placed through adjustment: difference between cycle and 2018 cycle

Placed (Adjustment)



Note: The percentage change is not plotted in the above chart for groups with fewer than 30 placed applicants in any one cycle.

A.10 Main scheme applicants placed through adjustment: 14 days after A level results day

Placed through adjustment: applicants at 14 days after A level results day

Applicant type	Status	2010	2011	2012	2013	2014	2015	2016	2017	2018	2019
Main scheme	Placed (Adjustment)	10	10	40	40	40	40	40	40	30	20

A.11 Main scheme applicants placed through adjustment: 14 days after A level results day

Placed through adjustment: difference between cycle and 2018 cycle

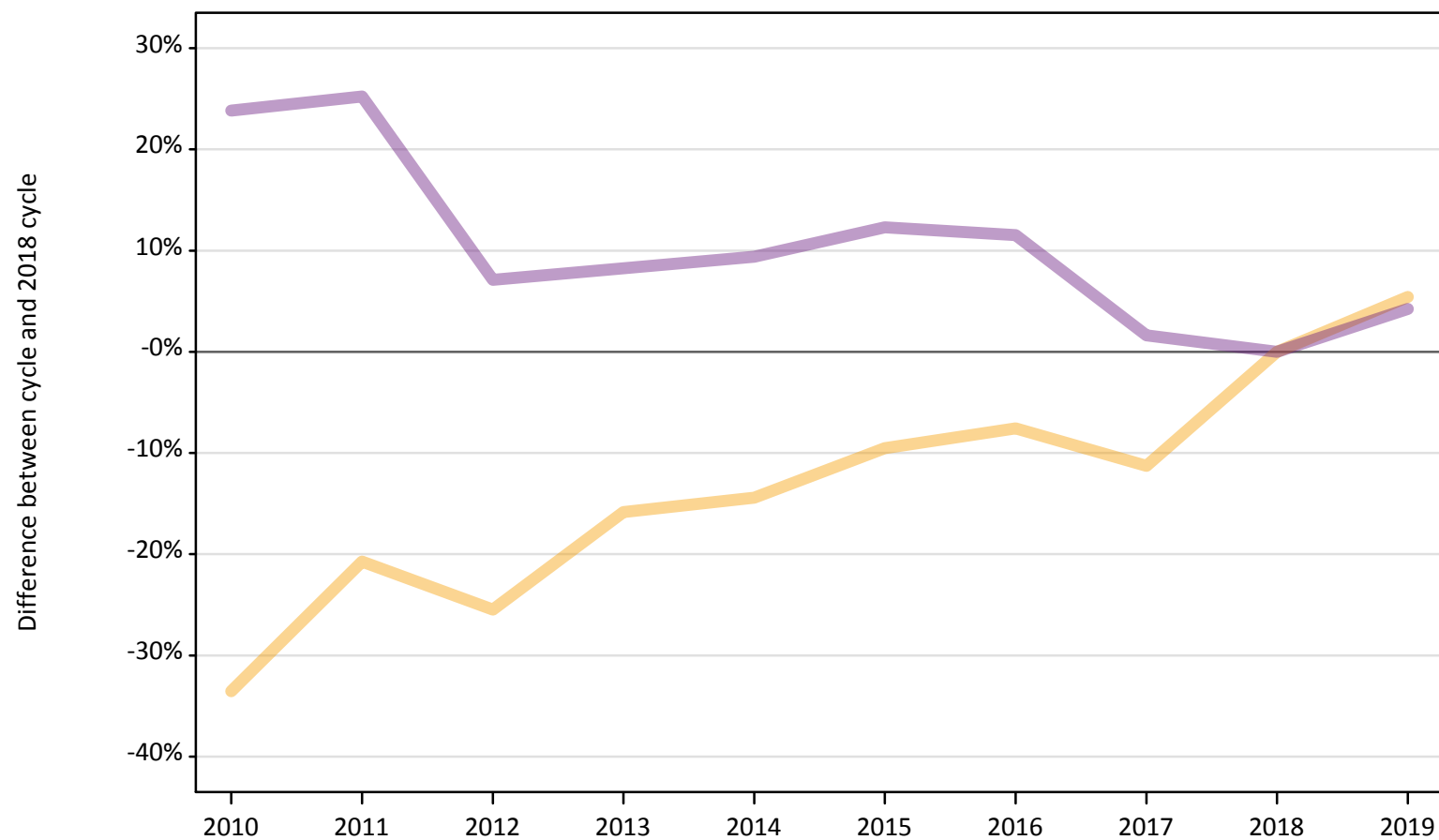
Applicant type	Status	2010	2011	2012	2013	2014	2015	2016	2017	2018	2019
Main scheme	Placed (Adjustment)	-52%	-59%	33%	37%	33%	44%	41%	56%	0%	-26%

Note: The percentage change is not recorded in the above table for groups with fewer than 10 placed applicants in that cycle or in the 2018 cycle.

A.12 Main scheme applicants not currently placed from the EU - excluding UK: 14 days after A level results day

Applicants in unplaced states: difference between cycle and 2018 cycle

— Holding offer
— Free to be placed in Clearing



Note: The percentage change is not plotted in the above chart for groups with fewer than 30 unplaced applicants in any one cycle.

A.13 Main scheme applicants not currently placed from the EU - excluding UK: 14 days after A level results day

Applicants in unplaced states: applicants at 14 days after A level results day

Applicant type	Status	2010	2011	2012	2013	2014	2015	2016	2017	2018	2019
Main scheme	Holding offer	4,030	4,810	4,520	5,110	5,190	5,490	5,610	5,380	6,070	6,400
	Free to be placed in Clearing	16,340	16,530	14,130	14,290	14,440	14,820	14,720	13,410	13,200	13,750

A.14 Main scheme applicants not currently placed from the EU - excluding UK: 14 days after A level results day

Applicants in unplaced states: difference between cycle and 2018 cycle

Applicant type	Status	2010	2011	2012	2013	2014	2015	2016	2017	2018	2019
Main scheme	Holding offer	-34%	-21%	-25%	-16%	-14%	-10%	-8%	-11%	0%	5%
	Free to be placed in Clearing	24%	25%	7%	8%	9%	12%	12%	2%	0%	4%

Note: The percentage change is not recorded in the above table for groups with fewer than 10 unplaced applicants in that cycle or in the 2018 cycle.

A.15 Direct to Clearing applicants from the EU - excluding UK: 14 days after A level results day

Direct to Clearing: difference between cycle and 2018 cycle



Note: The percentage change is not plotted in the above chart for groups with fewer than 30 placed applicants in any one cycle.

A.16 Direct to Clearing applicants from the EU - excluding UK: 14 days after A level results day

Direct to Clearing 14 days after A level results day

Applicant type	Status	2010	2011	2012	2013	2014	2015	2016	2017	2018	2019
Direct to Clearing	Placed (Direct to Clearing)	220	210	270	290	270	330	300	370	390	450
	Other (Direct to Clearing)	530	510	370	370	370	380	330	330	400	380

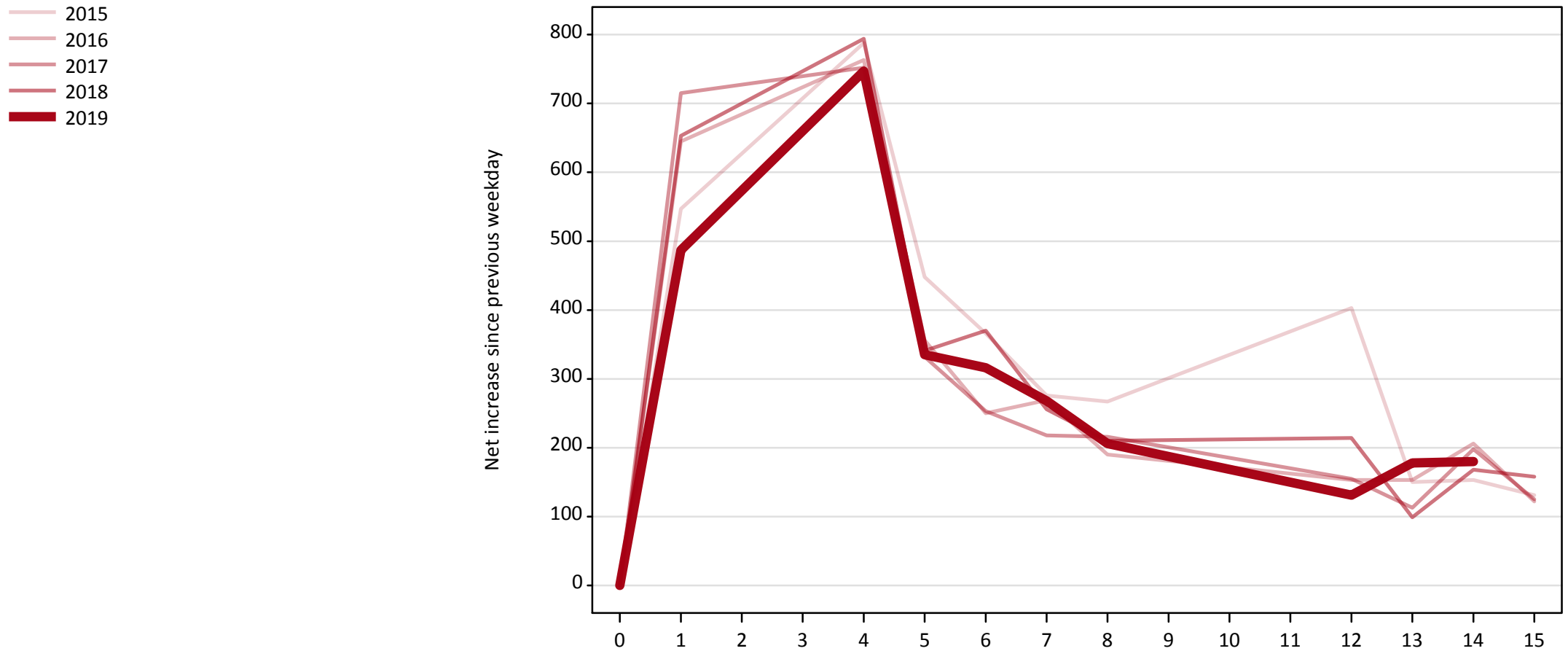
A.17 Direct to Clearing applicants from the EU - excluding UK: 14 days after A level results day

Direct to Clearing: difference between cycle and 2018 cycle

Applicant type	Status	2010	2011	2012	2013	2014	2015	2016	2017	2018	2019
Direct to Clearing	Placed (Direct to Clearing)	-45%	-47%	-31%	-25%	-30%	-17%	-23%	-6%	0%	14%
	Other (Direct to Clearing)	32%	27%	-7%	-9%	-9%	-5%	-18%	-17%	0%	-6%

Note: The percentage change is not recorded in the above table for groups with fewer than 10 placed applicants in that cycle or in the 2018 cycle.

A.18 All Placed: Daily net change (from the EU - excluding UK)
Net increase since previous weekday (2019 cycle up to 14 days after A level results day)

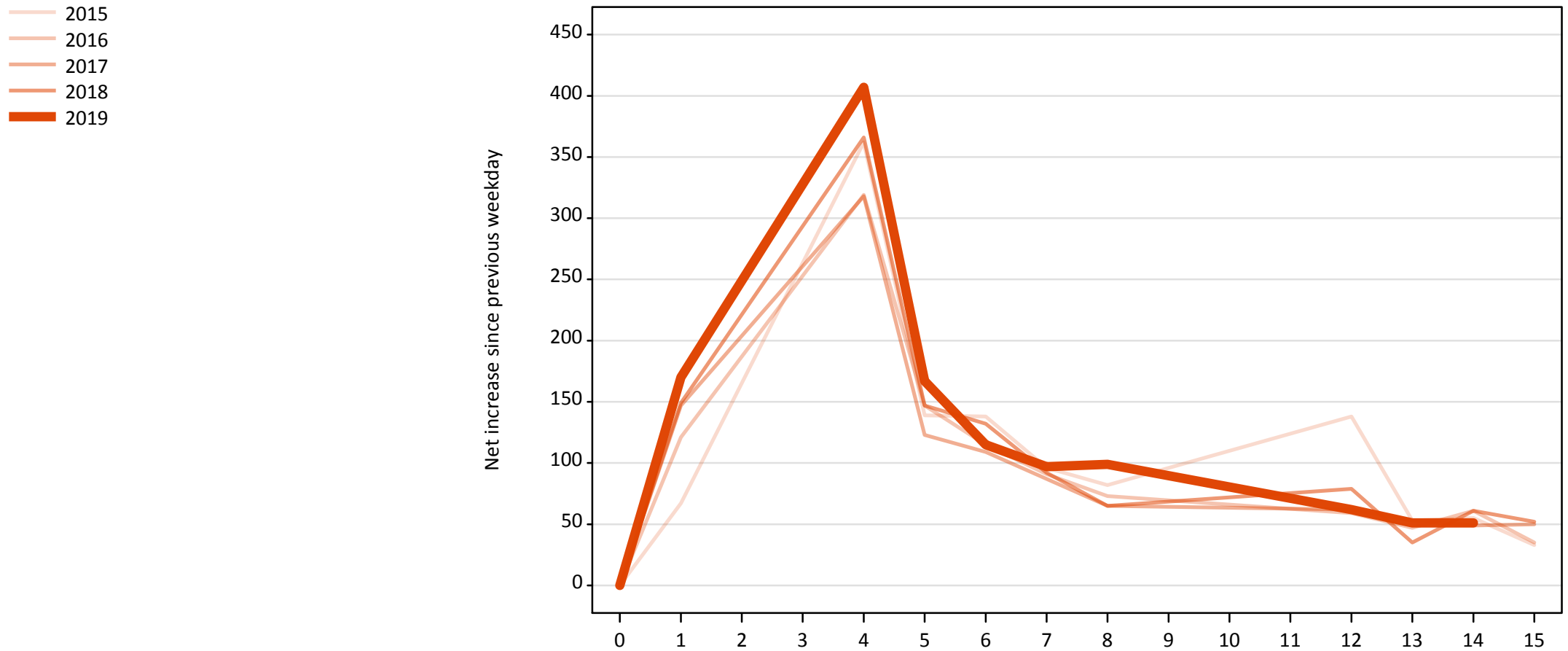


A.19 All Placed: Daily net change (from the EU - excluding UK)

Net increase since previous weekday (2019 cycle up to 14 days after A level results day)

Applicant status, days since A level results day		2015	2016	2017	2018	2019
All Placed	0	0	0	0	0	0
	1	550	650	720	650	490
	4	790	760	750	790	750
	5	450	360	330	340	340
	6	370	250	250	370	320
	7	280	270	220	260	270
	8	270	190	220	210	210
	12	400	150	160	210	130
	13	150	150	110	100	180
	14	150	210	200	170	180
	15	130	120	130	160	

A.20 Placed through Clearing only: Daily net change (from the EU - excluding UK)
Net increase since previous weekday (2019 cycle up to 14 days after A level results day)

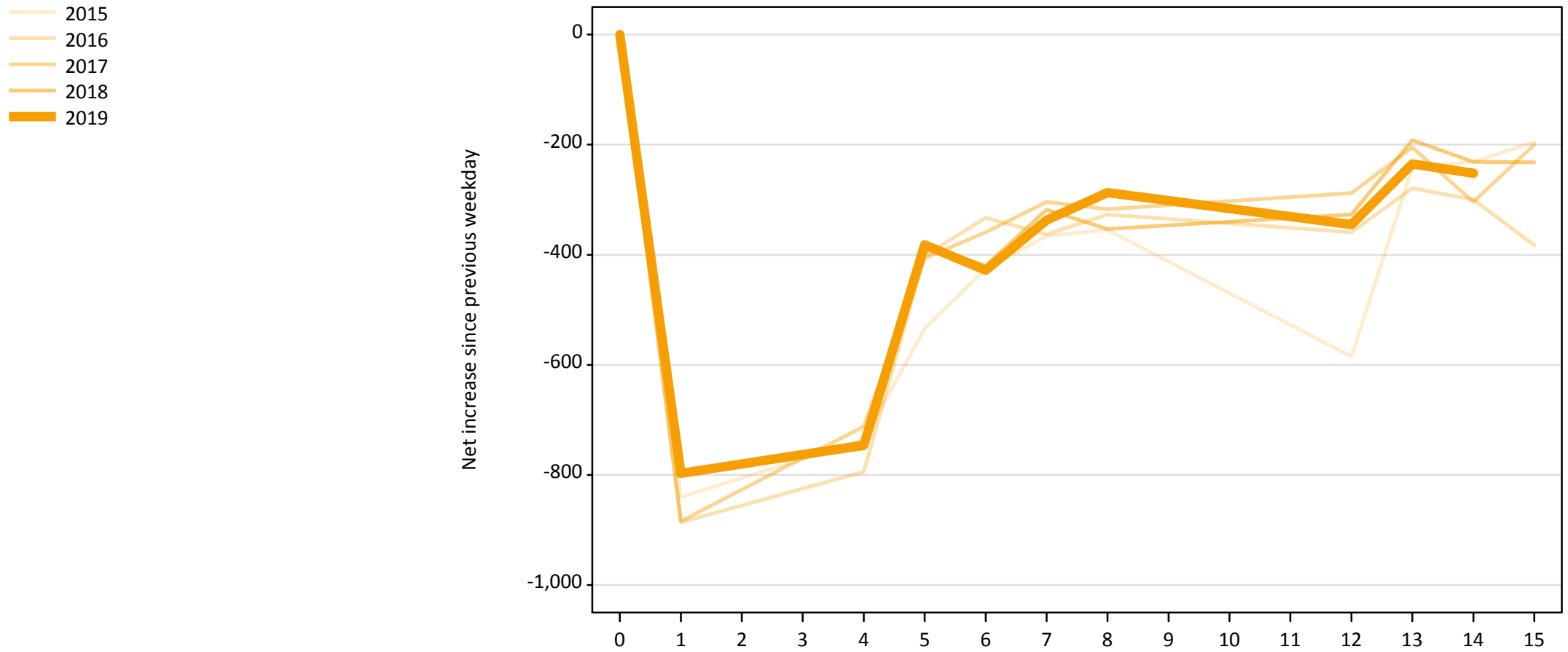


A.21 Placed through Clearing only: Daily net change (from the EU - excluding UK)

Net increase since previous weekday (2019 cycle up to 14 days after A level results day)

Applicant status, days since A level results day		2015	2016	2017	2018	2019
Placed through Clearing only	0	0	0	0	0	0
	1	70	120	150	150	170
	4	360	320	320	370	410
	5	140	150	120	150	170
	6	140	120	110	130	120
	7	100	90	90	90	100
	8	80	70	70	70	100
	12	140	60	60	80	60
	13	50	50	50	40	50
	14	60	60	50	60	50
	15	30	40	50	50	

A.22 Holding Offer: Daily net change (from the EU - excluding UK)
Net increase since previous weekday (2019 cycle up to 14 days after A level results day)



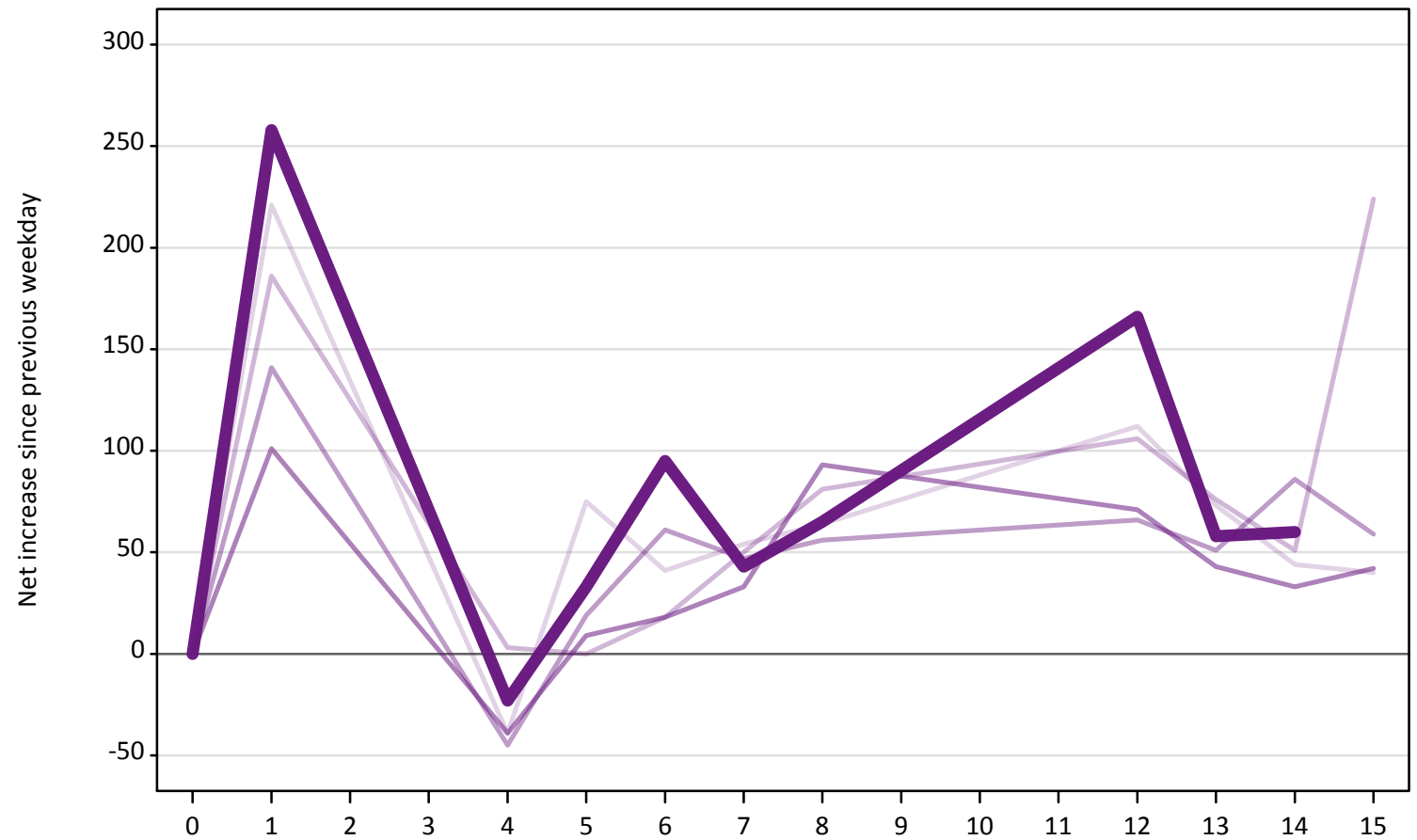
A.23 Holding Offer: Daily net change (from the EU - excluding UK)

Net increase since previous weekday (2019 cycle up to 14 days after A level results day)

Applicant status, days since A level results day	2015	2016	2017	2018	2019	
Holding Offer	0	0	0	0	0	
	1	-840	-890	-880	-800	-800
	4	-740	-790	-710	-750	-750
	5	-530	-400	-410	-380	-380
	6	-430	-330	-360	-420	-430
	7	-370	-360	-300	-320	-340
	8	-360	-330	-320	-350	-290
	12	-590	-360	-290	-330	-350
	13	-240	-280	-210	-190	-240
	14	-230	-300	-300	-230	-250
	15	-200	-380	-200	-230	

A.24 Free to be placed in Clearing: Daily net change (from the EU - excluding UK)
Net increase since previous weekday (2019 cycle up to 14 days after A level results day)

- 2015
- 2016
- 2017
- 2018
- 2019



A.25 Free to be placed in Clearing: Daily net change (from the EU - excluding UK)

Net increase since previous weekday (2019 cycle up to 14 days after A level results day)

Applicant status, days since A level results day		2015	2016	2017	2018	2019
Free to be placed in Clearing	0	0	0	0	0	0
	1	220	190	140	100	260
	4	-40	0	-50	-40	-20
	5	80	0	20	10	30
	6	40	20	60	20	100
	7	50	50	50	30	40
	8	60	80	60	90	70
	12	110	110	70	70	170
	13	70	80	50	40	60
	14	40	50	90	30	60
	15	40	220	60	40	