

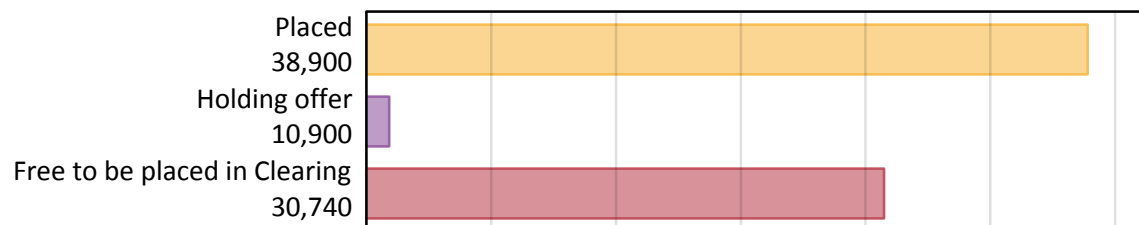
Daily Clearing Analysis: Overview

Analysis at 00:05 on Thursday 29 August 2019 (14 days after A level results day)

A.1 Applicants by type and status from outside the EU, 2019 cycle

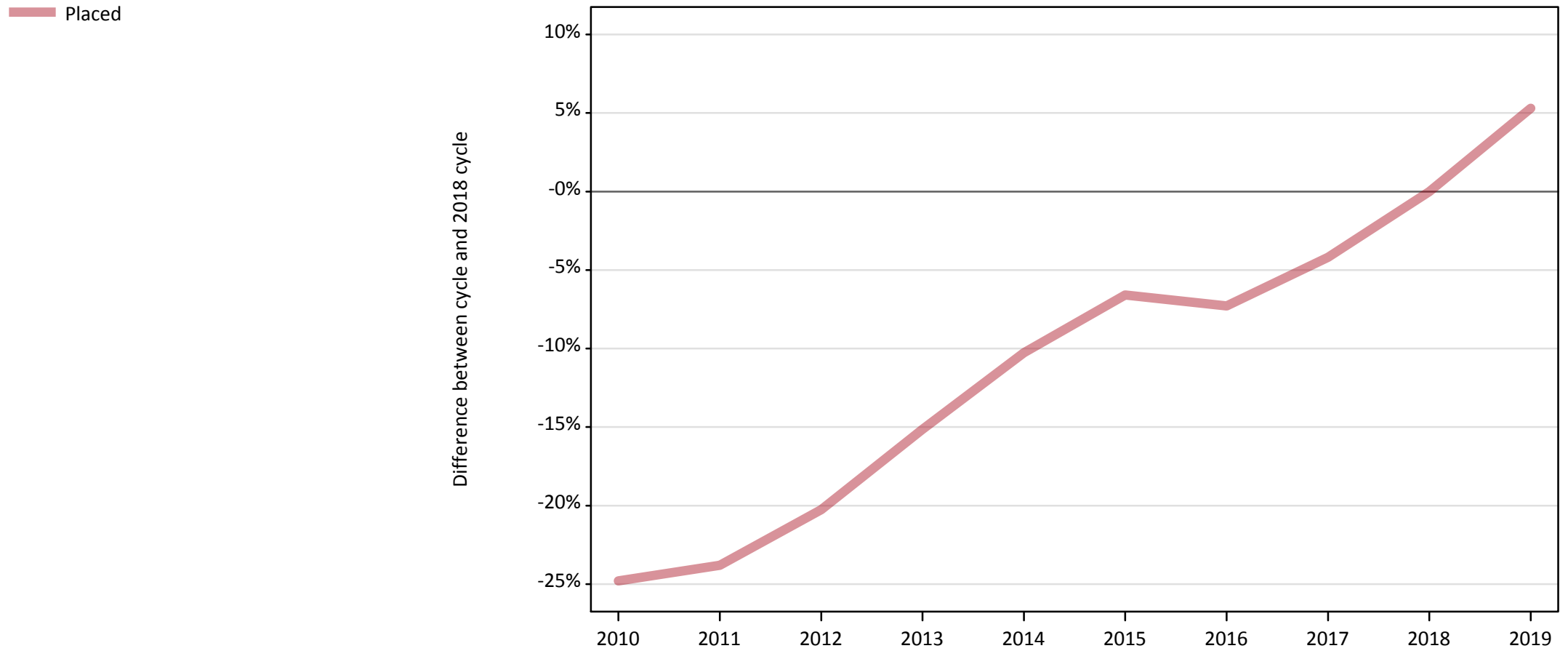
Applicant type	Status	2019
Main scheme	Placed (Clearing)	3,410
	Placed (Adjustment)	50
	Placed (Firm)	29,030
	Placed (Insurance)	3,660
	Placed (Other)	2,090
	Holding offer	10,900
	Free to be placed in Clearing	30,740
Direct to Clearing	Placed (Direct to Clearing)	660
	Other (Direct to Clearing)	890
All applicants	Placed	38,900

A.2 Summary of applicants who are placed, holding offers or free to be placed in Clearing (outside the EU)



A.3 All placed applicants from outside the EU: 14 days after A level results day

All placed applicants: difference between cycle and 2018 cycle



Note: The percentage change is not plotted in the above chart for groups with fewer than 30 placed applicants in any one cycle.

A.4 All placed applicants from outside the EU: 14 days after A level results day

All placed applicants: applicants at 14 days after A level results day

Applicant type	Status	2010	2011	2012	2013	2014	2015	2016	2017	2018	2019
All applicants	Placed	27,780	28,150	29,460	31,350	33,150	34,510	34,250	35,390	36,940	38,900

A.5 All placed applicants from outside the EU: 14 days after A level results day

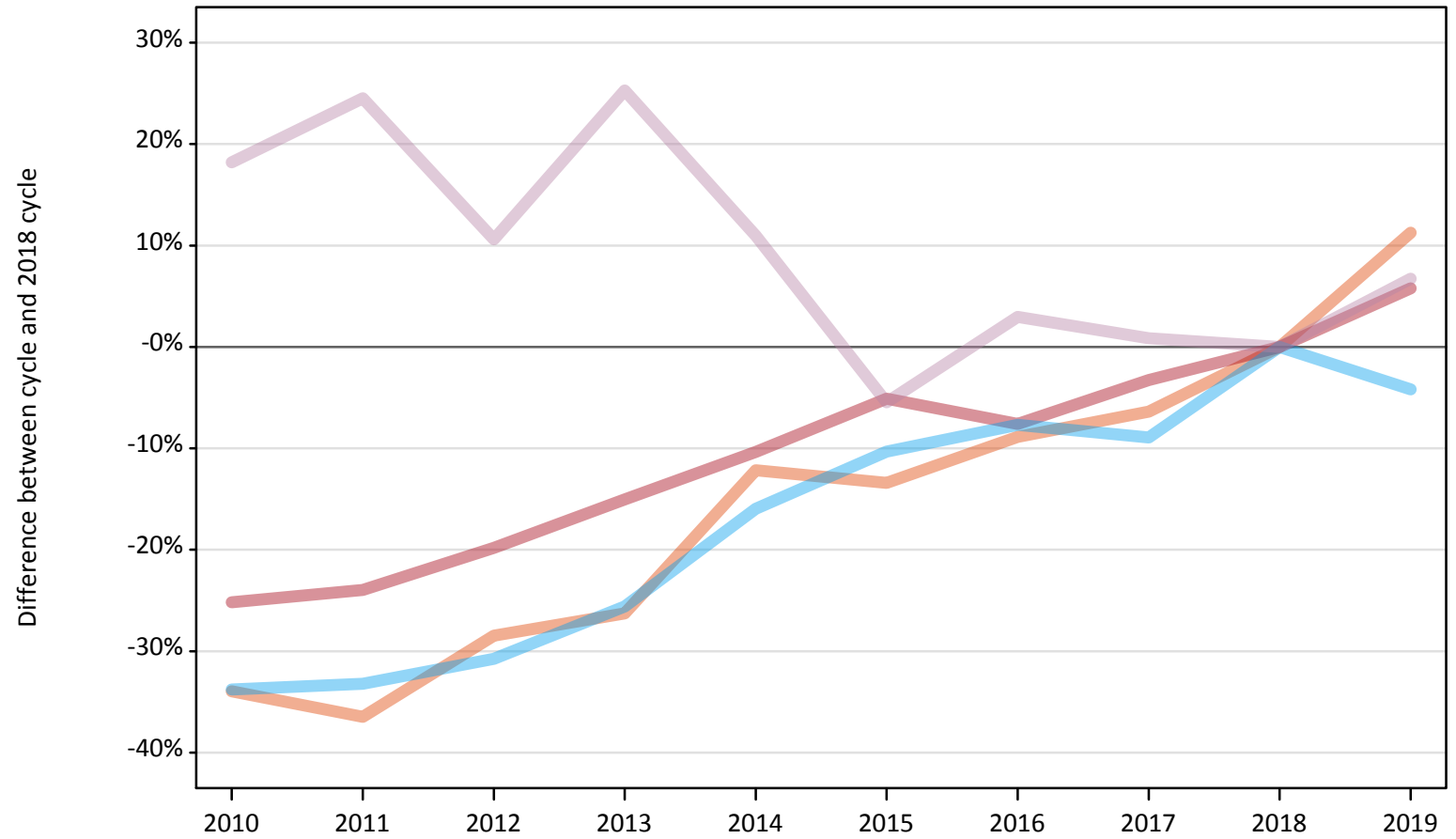
All placed applicants: difference between cycle and 2018 cycle

Applicant type	Status	2010	2011	2012	2013	2014	2015	2016	2017	2018	2019
All applicants	Placed	-25%	-24%	-20%	-15%	-10%	-7%	-7%	-4%	0%	5%

Note: The percentage change is not recorded in the above table for groups with fewer than 10 placed applicants in that cycle or in the 2018 cycle.

A.6 Placed main scheme applicants from outside the EU: 14 days after A level results day
All Main scheme placed routes (excluding Adjustment): difference between cycle and 2018 cycle

- Placed (Clearing)
- Placed (Firm)
- Placed (Insurance)
- Placed (Other)



Note: The percentage change is not plotted in the above chart for groups with fewer than 30 placed applicants in any one cycle.

A.7 Placed main scheme applicants from outside the EU: 14 days after A level results day

All Main scheme placed routes (excluding Adjustment): applicants at 14 days after A level results day

Applicant type	Status	2010	2011	2012	2013	2014	2015	2016	2017	2018	2019
Main scheme	Placed (Clearing)	2,020	1,950	2,190	2,260	2,690	2,650	2,790	2,870	3,060	3,410
	Placed (Firm)	20,540	20,870	22,010	23,310	24,600	26,050	25,360	26,550	27,440	29,030
	Placed (Insurance)	2,530	2,550	2,640	2,840	3,210	3,420	3,520	3,480	3,820	3,660
	Placed (Other)	2,320	2,440	2,170	2,460	2,180	1,860	2,020	1,980	1,960	2,090

A.8 Placed main scheme applicants from outside the EU: 14 days after A level results day

All Main scheme placed routes (excluding Adjustment): difference between cycle and 2018 cycle

Applicant type	Status	2010	2011	2012	2013	2014	2015	2016	2017	2018	2019
Main scheme	Placed (Clearing)	-34%	-36%	-28%	-26%	-12%	-13%	-9%	-6%	0%	11%
	Placed (Firm)	-25%	-24%	-20%	-15%	-10%	-5%	-8%	-3%	0%	6%
	Placed (Insurance)	-34%	-33%	-31%	-26%	-16%	-10%	-8%	-9%	0%	-4%
	Placed (Other)	18%	25%	11%	25%	11%	-5%	3%	1%	0%	7%

Note: The percentage change is not recorded in the above table for groups with fewer than 10 placed applicants in that cycle or in the 2018 cycle.

A.9 Main scheme applicants placed through adjustment: 14 days after A level results day

Placed through adjustment: difference between cycle and 2018 cycle

Placed (Adjustment)



Note: The percentage change is not plotted in the above chart for groups with fewer than 30 placed applicants in any one cycle.

A.10 Main scheme applicants placed through adjustment: 14 days after A level results day

Placed through adjustment: applicants at 14 days after A level results day

Applicant type	Status	2010	2011	2012	2013	2014	2015	2016	2017	2018	2019
Main scheme	Placed (Adjustment)	50	40	70	60	90	70	70	50	50	50

A.11 Main scheme applicants placed through adjustment: 14 days after A level results day

Placed through adjustment: difference between cycle and 2018 cycle

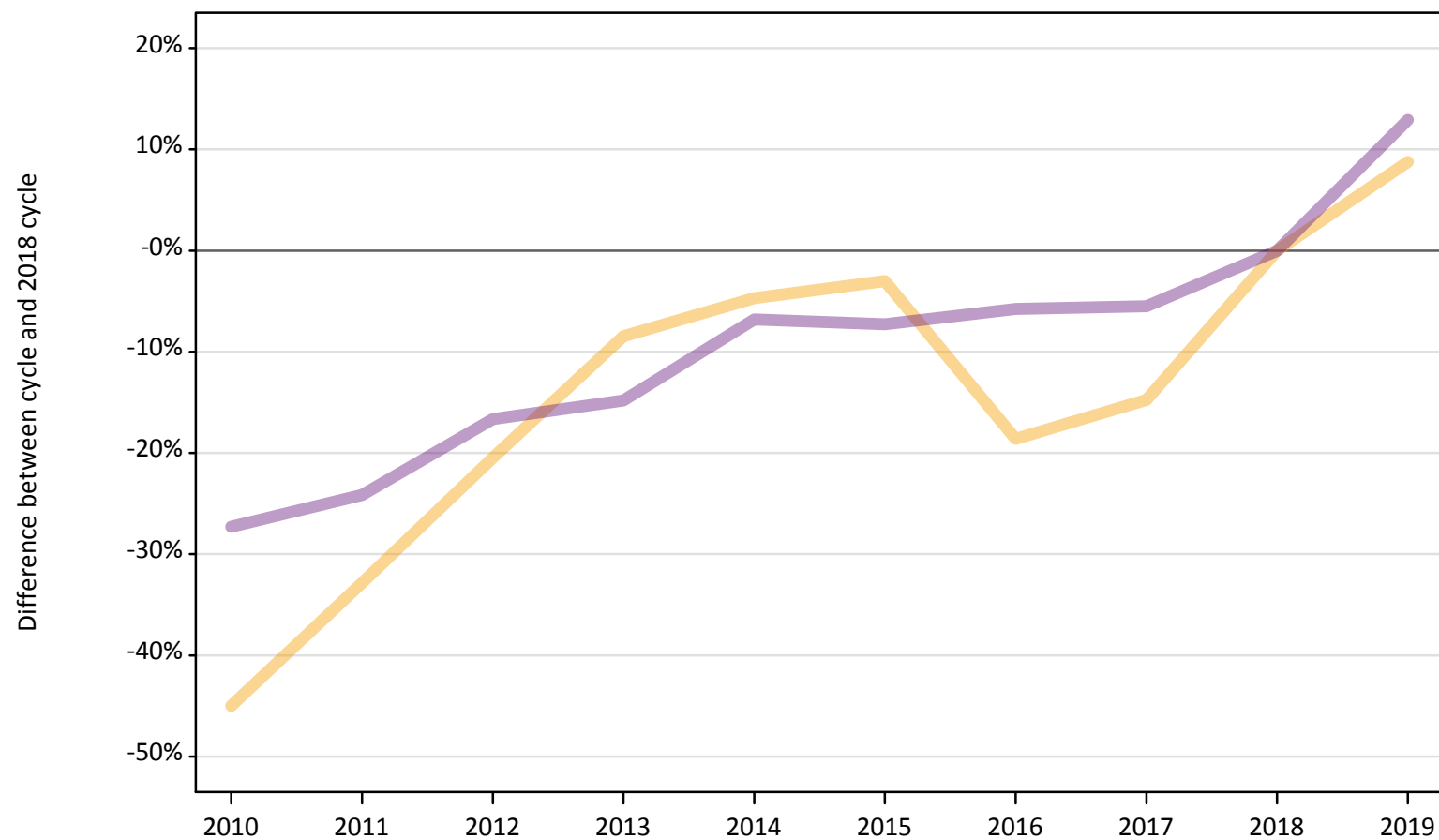
Applicant type	Status	2010	2011	2012	2013	2014	2015	2016	2017	2018	2019
Main scheme	Placed (Adjustment)	0%	-11%	51%	33%	91%	60%	49%	9%	0%	9%

Note: The percentage change is not recorded in the above table for groups with fewer than 10 placed applicants in that cycle or in the 2018 cycle.

A.12 Main scheme applicants not currently placed from outside the EU: 14 days after A level results day

Applicants in unplaced states: difference between cycle and 2018 cycle

— Holding offer
— Free to be placed in Clearing



Note: The percentage change is not plotted in the above chart for groups with fewer than 30 unplaced applicants in any one cycle.

A.13 Main scheme applicants not currently placed from outside the EU: 14 days after A level results day

Applicants in unplaced states: applicants at 14 days after A level results day

Applicant type	Status	2010	2011	2012	2013	2014	2015	2016	2017	2018	2019
Main scheme	Holding offer	5,520	6,730	7,970	9,180	9,550	9,730	8,160	8,550	10,030	10,900
	Free to be placed in Clearing	19,790	20,650	22,690	23,190	25,370	25,240	25,650	25,720	27,220	30,740

A.14 Main scheme applicants not currently placed from outside the EU: 14 days after A level results day

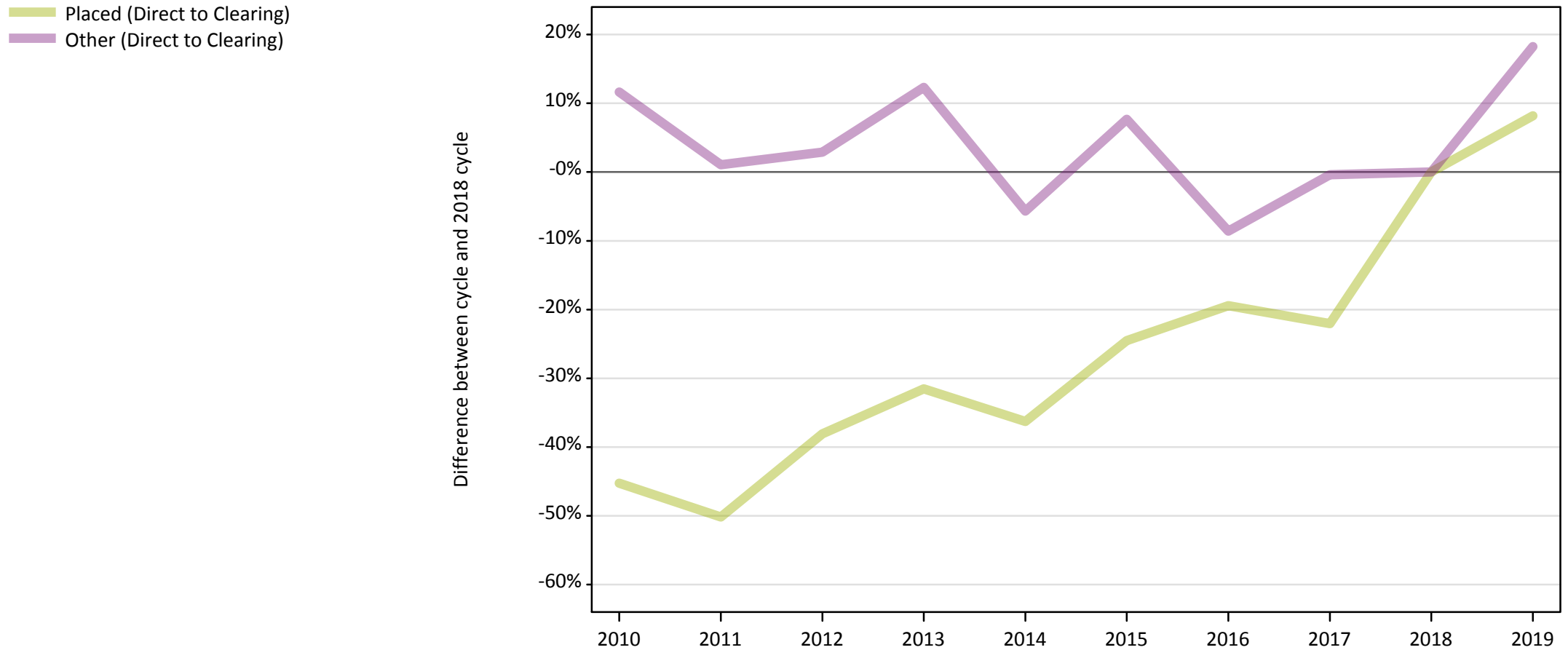
Applicants in unplaced states: difference between cycle and 2018 cycle

Applicant type	Status	2010	2011	2012	2013	2014	2015	2016	2017	2018	2019
Main scheme	Holding offer	-45%	-33%	-20%	-8%	-5%	-3%	-19%	-15%	0%	9%
	Free to be placed in Clearing	-27%	-24%	-17%	-15%	-7%	-7%	-6%	-5%	0%	13%

Note: The percentage change is not recorded in the above table for groups with fewer than 10 unplaced applicants in that cycle or in the 2018 cycle.

A.15 Direct to Clearing applicants from outside the EU: 14 days after A level results day

Direct to Clearing: difference between cycle and 2018 cycle



Note: The percentage change is not plotted in the above chart for groups with fewer than 30 placed applicants in any one cycle.

A.16 Direct to Clearing applicants from outside the EU: 14 days after A level results day

Direct to Clearing 14 days after A level results day

Applicant type	Status	2010	2011	2012	2013	2014	2015	2016	2017	2018	2019
Direct to Clearing	Placed (Direct to Clearing)	340	310	380	420	390	460	490	480	610	660
	Other (Direct to Clearing)	840	760	780	850	710	810	690	750	760	890

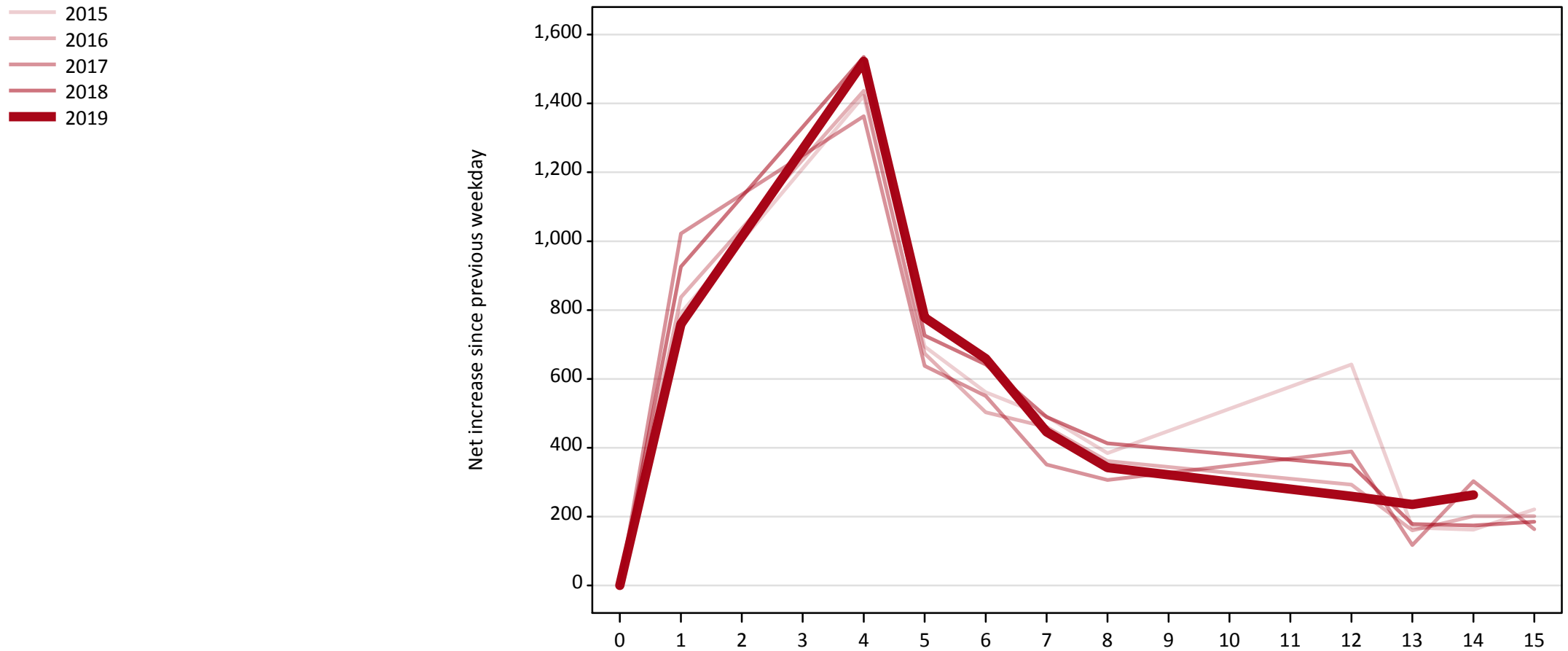
A.17 Direct to Clearing applicants from outside the EU: 14 days after A level results day

Direct to Clearing: difference between cycle and 2018 cycle

Applicant type	Status	2010	2011	2012	2013	2014	2015	2016	2017	2018	2019
Direct to Clearing	Placed (Direct to Clearing)	-45%	-50%	-38%	-32%	-36%	-25%	-19%	-22%	0%	8%
	Other (Direct to Clearing)	12%	1%	3%	12%	-6%	8%	-9%	-0%	0%	18%

Note: The percentage change is not recorded in the above table for groups with fewer than 10 placed applicants in that cycle or in the 2018 cycle.

A.18 All Placed: Daily net change (from outside the EU)
Net increase since previous weekday (2019 cycle up to 14 days after A level results day)

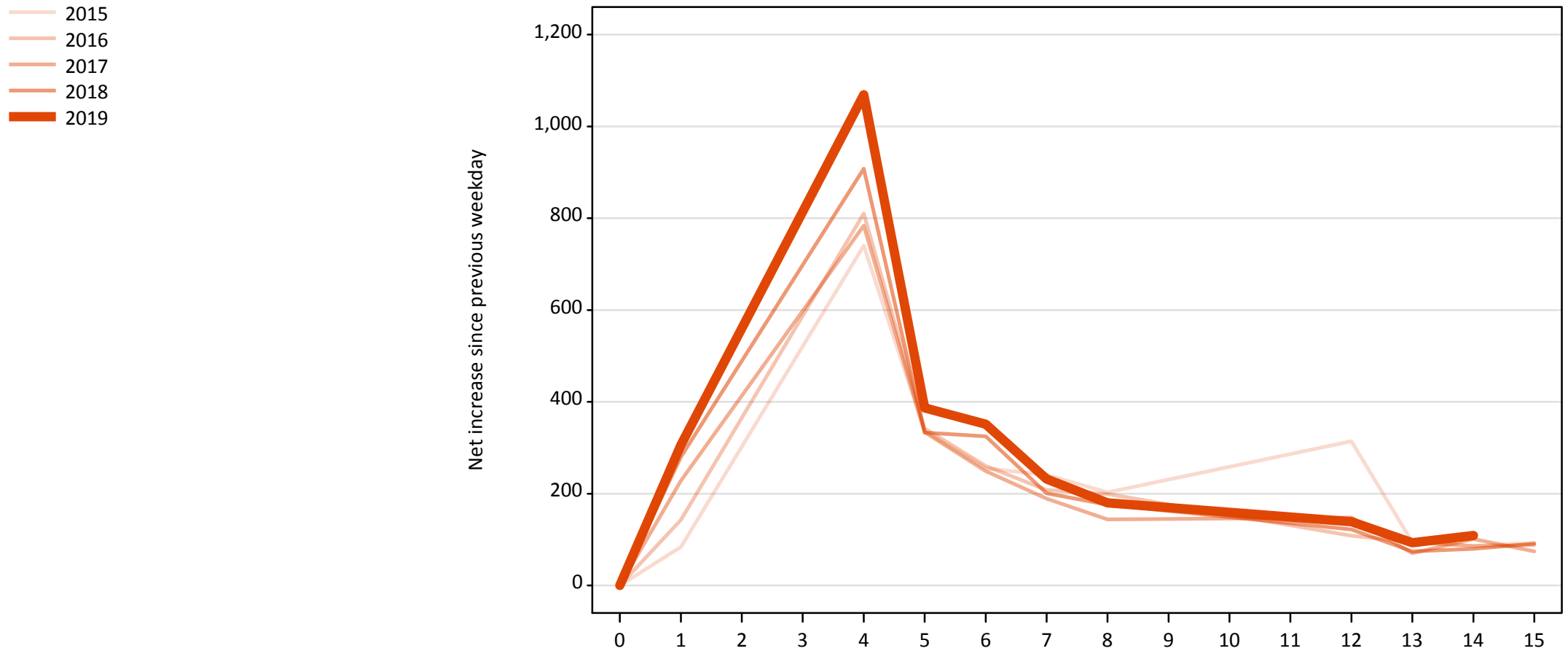


A.19 All Placed: Daily net change (from outside the EU)

Net increase since previous weekday (2019 cycle up to 14 days after A level results day)

Applicant status, days since A level results day		2015	2016	2017	2018	2019
All Placed	0	0	0	0	0	0
	1	790	840	1,020	930	760
	4	1,420	1,440	1,360	1,540	1,520
	5	690	670	640	730	780
	6	560	500	550	640	660
	7	490	460	350	490	450
	8	380	360	310	410	340
	12	640	290	390	350	260
	13	170	160	120	180	240
	14	160	200	300	170	260
	15	220	200	160	190	

A.20 Placed through Clearing only: Daily net change (from outside the EU)
Net increase since previous weekday (2019 cycle up to 14 days after A level results day)



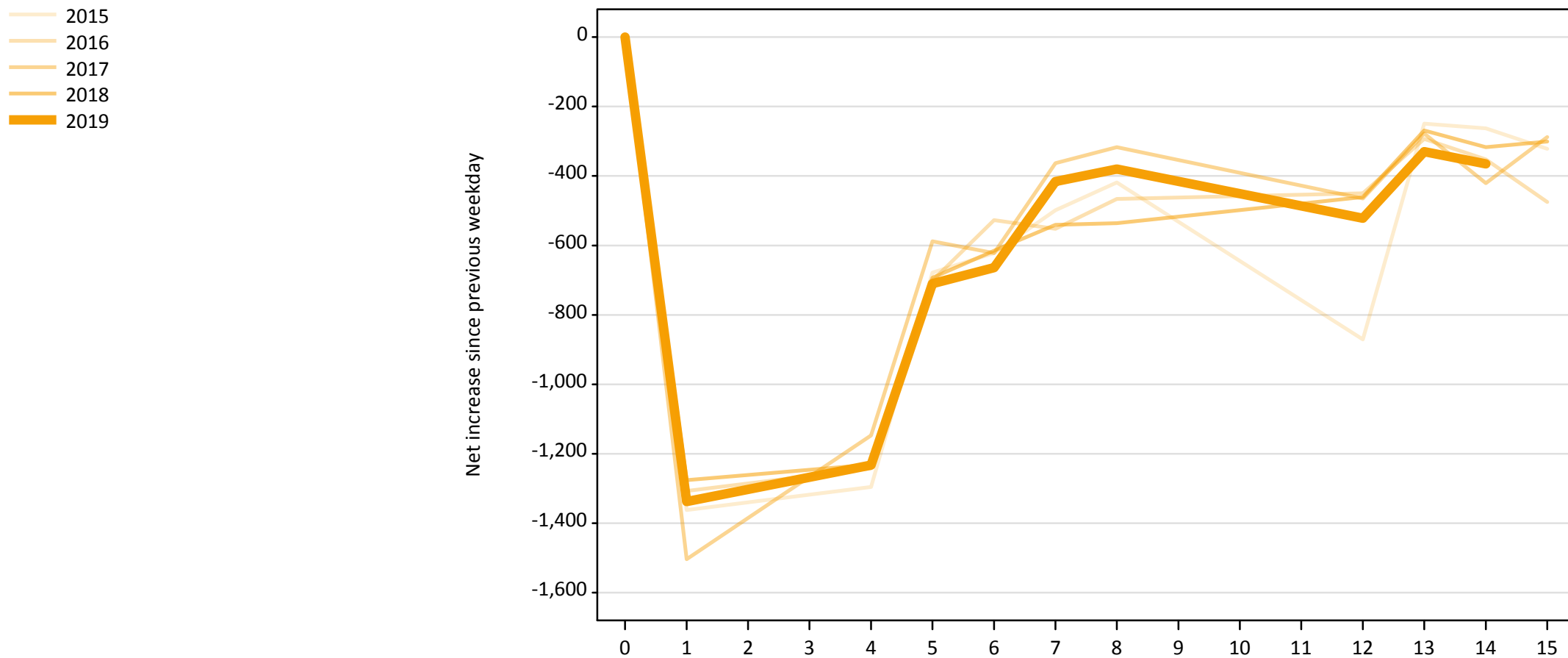
A.21 Placed through Clearing only: Daily net change (from outside the EU)

Net increase since previous weekday (2019 cycle up to 14 days after A level results day)

Applicant status, days since A level results day		2015	2016	2017	2018	2019
Placed through Clearing only	0	0	0	0	0	0
	1	80	140	230	280	310
	4	740	810	780	910	1,070
	5	340	340	330	330	390
	6	260	260	250	330	350
	7	240	210	190	200	230
	8	200	200	140	180	180
	12	310	110	150	120	140
	13	90	100	70	70	90
	14	90	90	100	80	110
	15	90	90	70	90	

A.22 Holding Offer: Daily net change (from outside the EU)

Net increase since previous weekday (2019 cycle up to 14 days after A level results day)



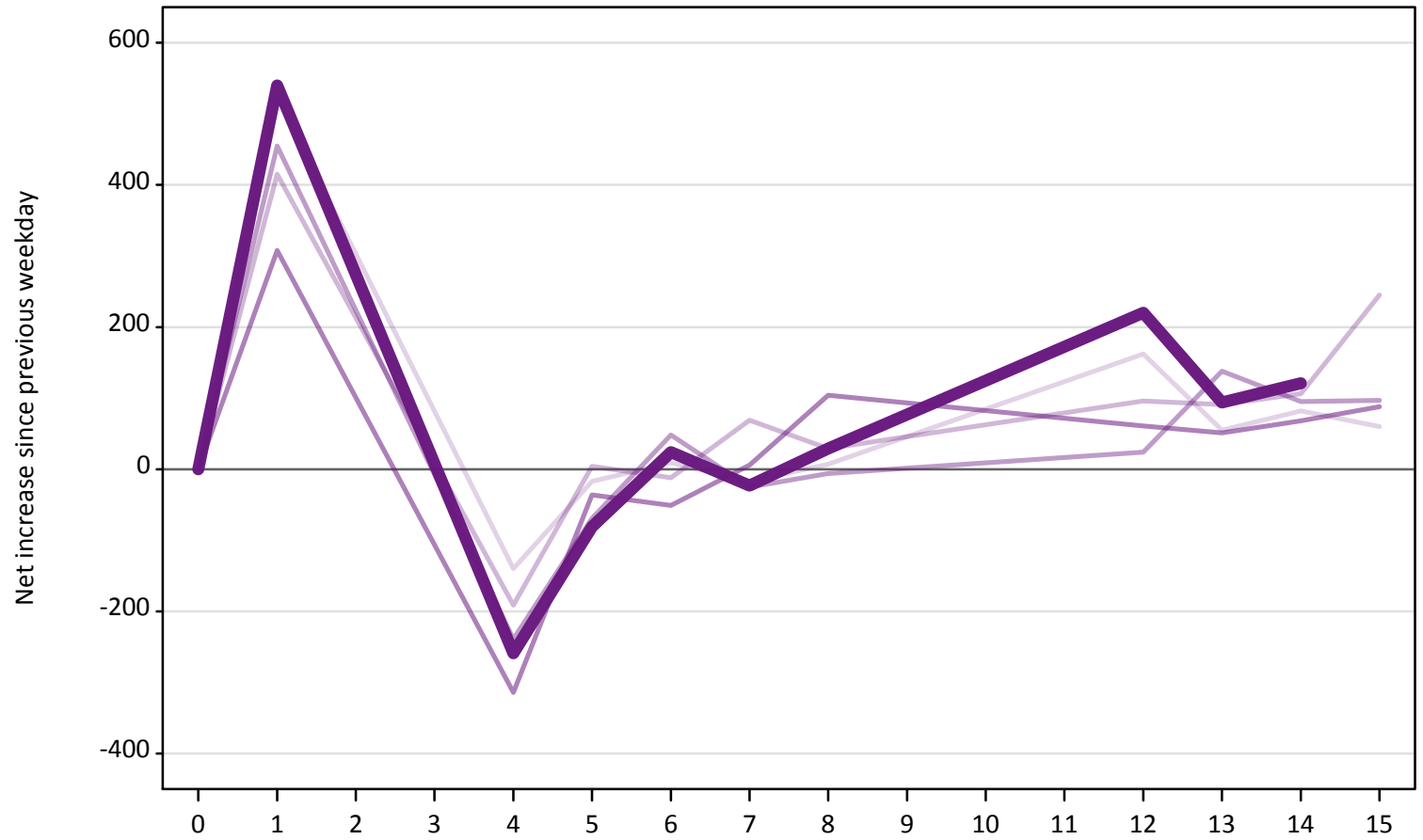
A.23 Holding Offer: Daily net change (from outside the EU)

Net increase since previous weekday (2019 cycle up to 14 days after A level results day)

Applicant status, days since A level results day		2015	2016	2017	2018	2019
Holding Offer	0	0	0	0	0	0
	1	-1,360	-1,310	-1,500	-1,280	-1,340
	4	-1,300	-1,240	-1,150	-1,230	-1,230
	5	-680	-700	-590	-690	-710
	6	-620	-530	-620	-620	-660
	7	-500	-550	-360	-540	-420
	8	-420	-470	-320	-540	-380
	12	-870	-450	-470	-460	-520
	13	-250	-290	-280	-270	-330
	14	-260	-350	-420	-320	-370
	15	-320	-480	-290	-300	

A.24 Free to be placed in Clearing: Daily net change (from outside the EU)
Net increase since previous weekday (2019 cycle up to 14 days after A level results day)

- 2015
- 2016
- 2017
- 2018
- 2019



A.25 Free to be placed in Clearing: Daily net change (from outside the EU)

Net increase since previous weekday (2019 cycle up to 14 days after A level results day)

Applicant status, days since A level results day		2015	2016	2017	2018	2019
Free to be placed in Clearing	0	0	0	0	0	0
	1	520	420	460	310	540
	4	-140	-190	-240	-310	-260
	5	-20	0	-70	-40	-80
	6	10	-10	50	-50	20
	7	-20	70	-30	10	-20
	8	10	30	-10	100	30
	12	160	100	20	60	220
	13	60	90	140	50	90
	14	80	110	100	70	120
	15	60	250	100	90	